

# STONEGATE SUBDIVISION FILING NO.2

(A REPLAT OF MESA VALLEY ESTATES)

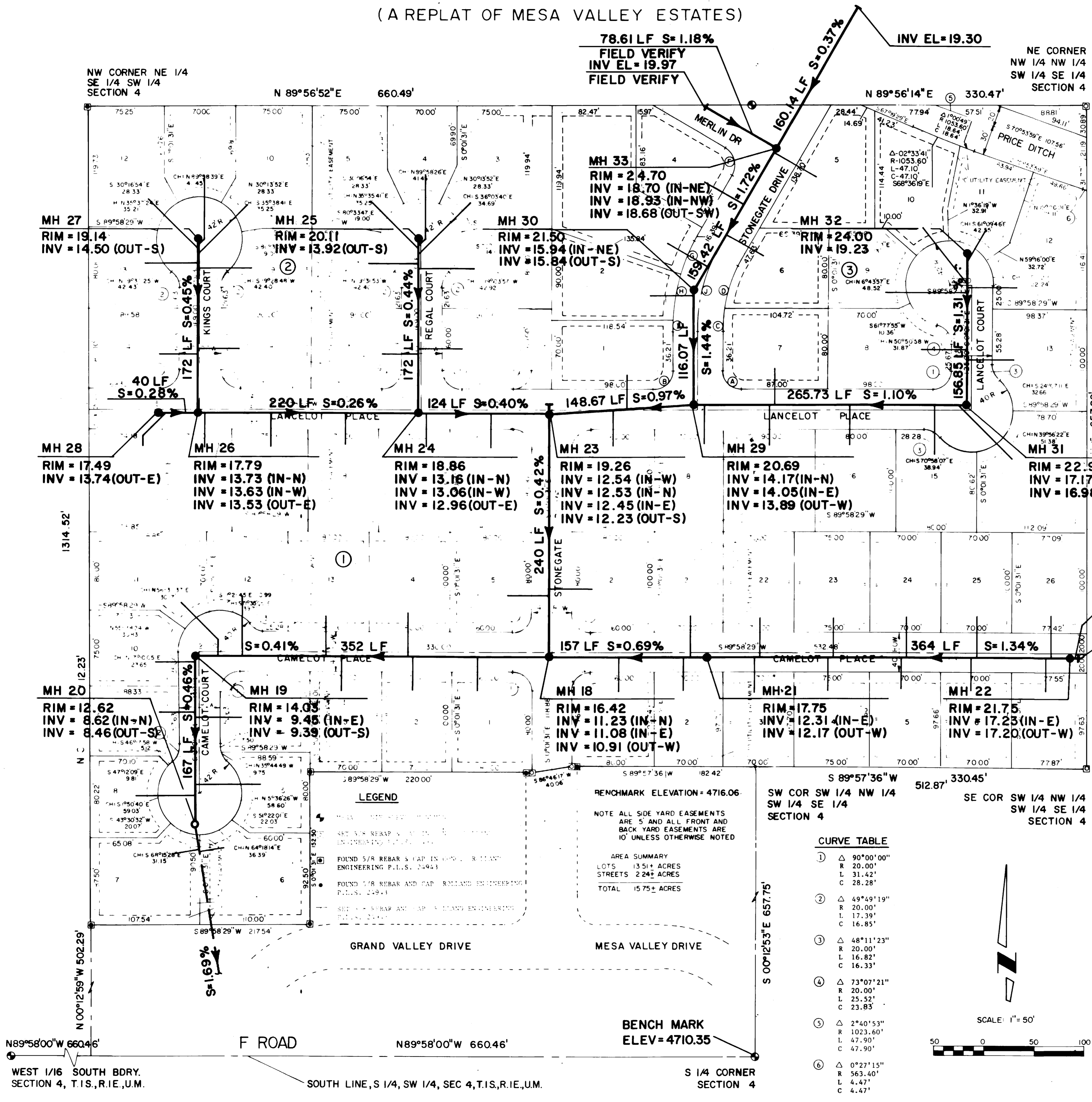
Structure Set Back Requirements

Front - 20 feet

Rear - 10 feet

Side - 1) Principal Structures - shall be a minimum of 5 feet from property line or allowing a minimum of 15 feet between principal structures on any adjacent Lot, whichever is greater (except where 10 foot easements are shown on said recorded plat)

2) Accessory Structures - front half of Lot same as Principal Structures, rear half of Lot 5 feet from property line (except where 10 foot easements are shown on said recorded plat).



## CURVE TABLE

CURVE	DELTA	RADIUS	TANGENT	LENGTH	CHORD	BEARING
(A)	90°00'00"	20.00'	20.00'	31.42'	28.28'	N45°01'31"W
(B)	90°00'00"	20.00'	20.00'	31.42'	28.28'	S44°58'29"W
(C)	10°58'09"	125.00'	12.00'	23.93'	23.89'	N05°27'34"E
(D)	19°03'22"	125.00'	20.98'	41.57'	41.38'	N20°28'19"E
(E)	90°00'00"	20.00'	20.00'	31.42'	28.28'	S75°00'00"W
(F)	90°00'00"	20.00'	20.00'	31.42'	28.28'	S15°00'00"E
(G)	09°12'36"	175.00'	14.10'	28.13'	28.10'	S25°23'42"W
(H)	16°17'49"	175.00'	25.06'	49.78'	49.61'	S12°38'29"W
(I)	04°31'06"	175.00'	6.90'	13.80'	13.80'	S02°14'02"W
(J)	30°01'31"	150.00'	40.23'	78.61'	77.71'	N14°59'15"E



**AS BUILT DRAWINGS**

	DESIGNED	MDY	CHECKED	TDR	JOB NO.	SHEET	1
	DRAWN	CFO	DATE	5/93		OF	1

**ROLLAND ENGINEERING**  
405 Ridges Blvd.  
Grand Junction, Colorado 81503  
(303) 243-8300