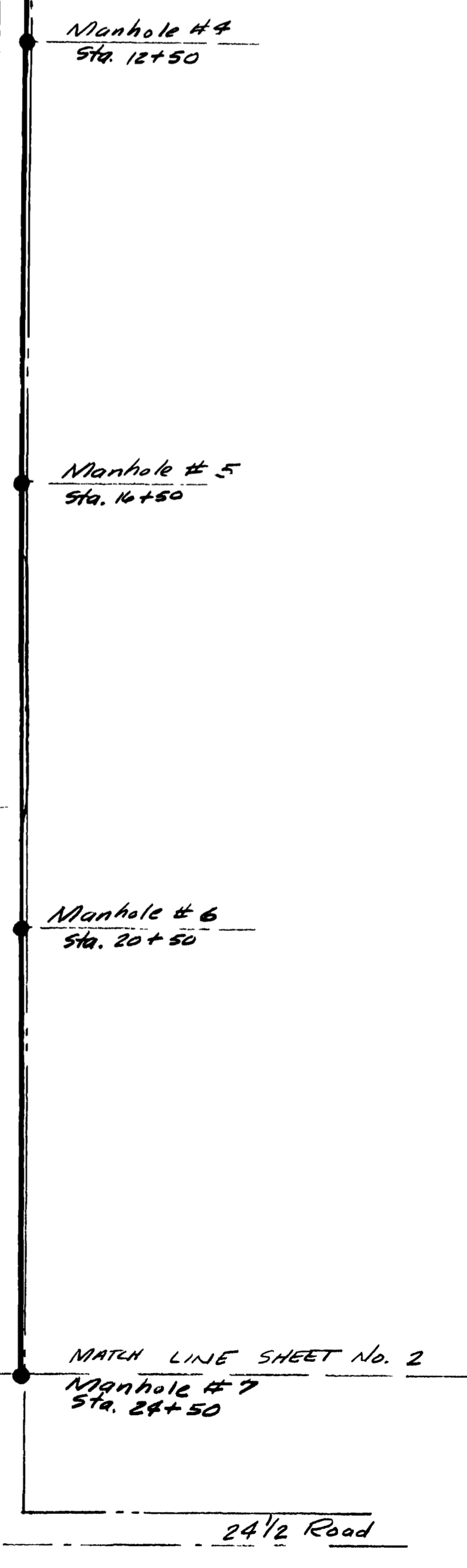
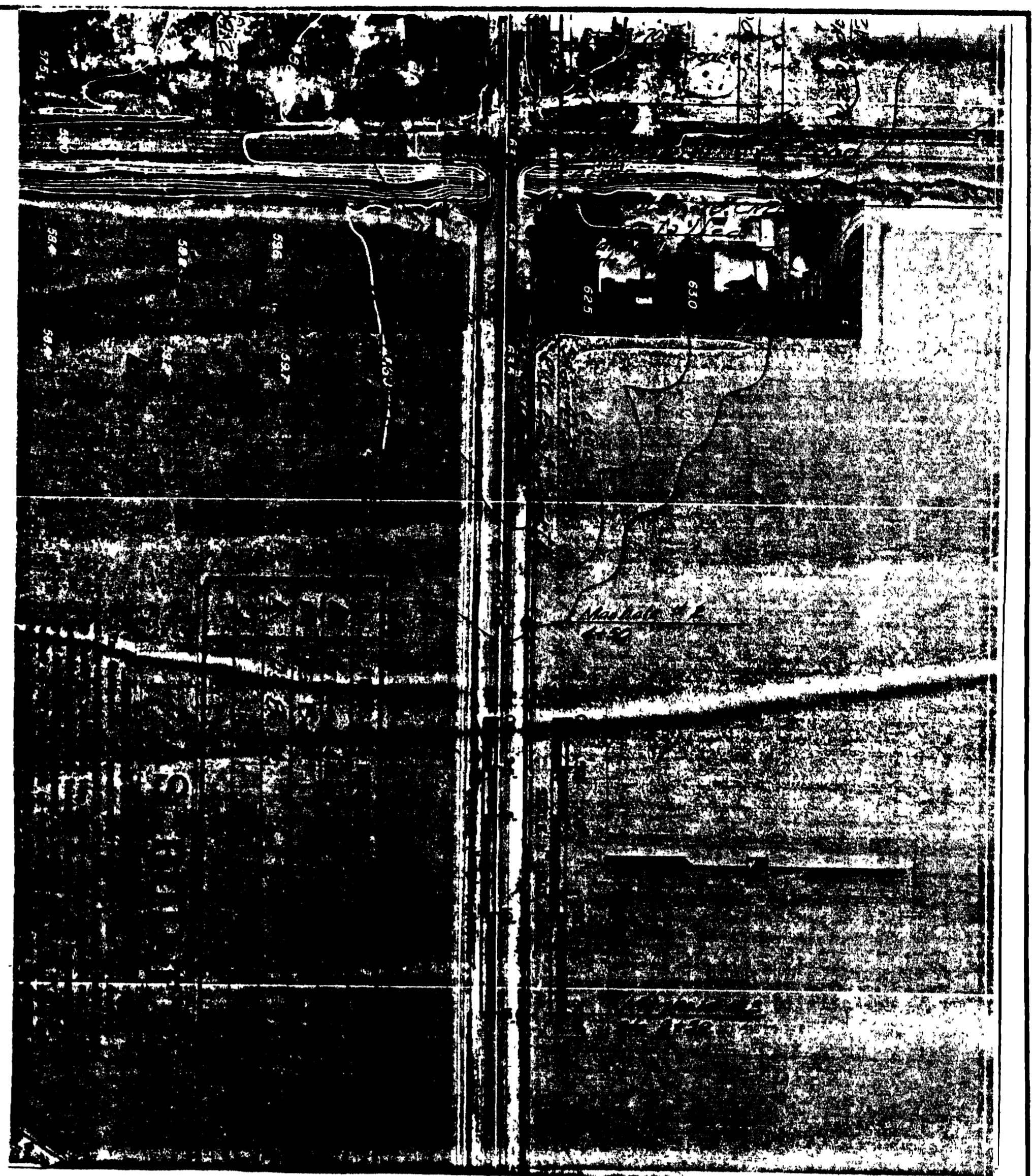
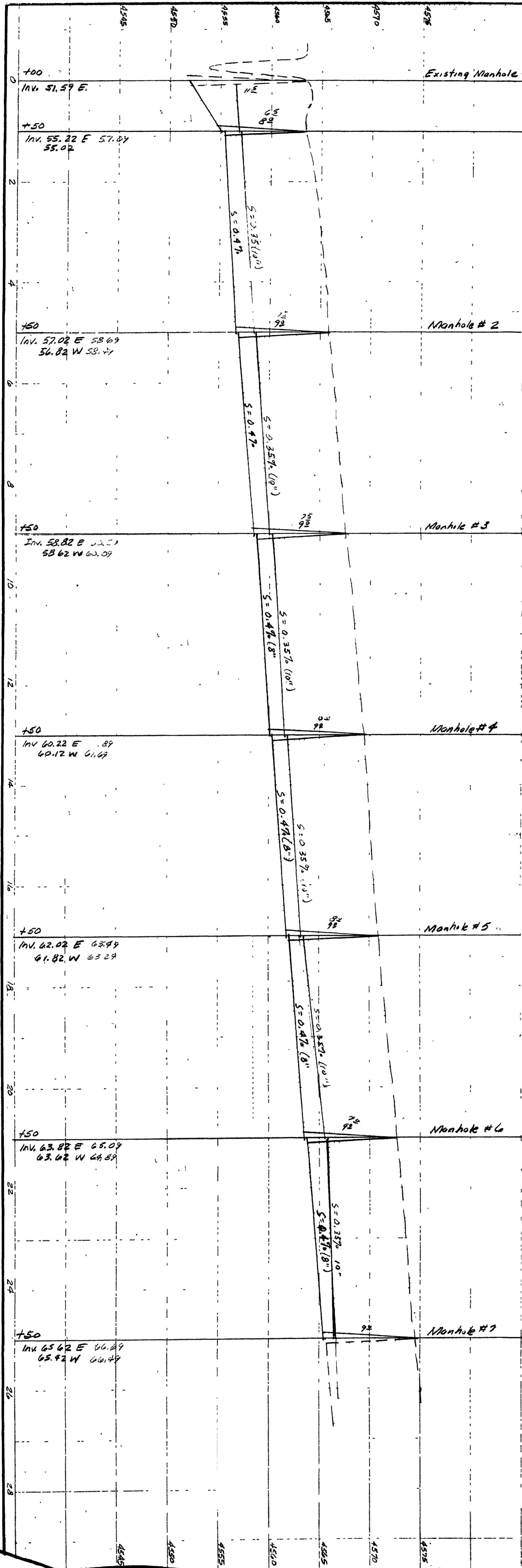


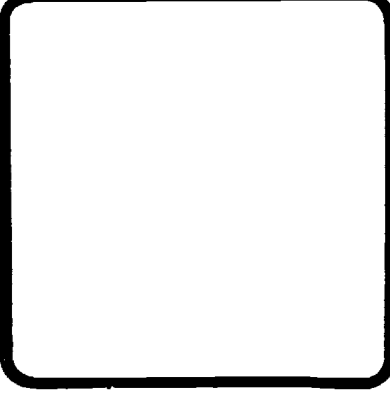
PROFILE		BY	DATE
SURVEYED			
PLOTTED			
GRADES CHECKED			
BY NOTED			
NO			
STRUCTURE NOTATNS CH'KD			

PLAN		BY	DATE
SURVEYED			
PLOTTED			
ALIGNMENT CHECKED			
RT OF WAY CHECKED			
NO			

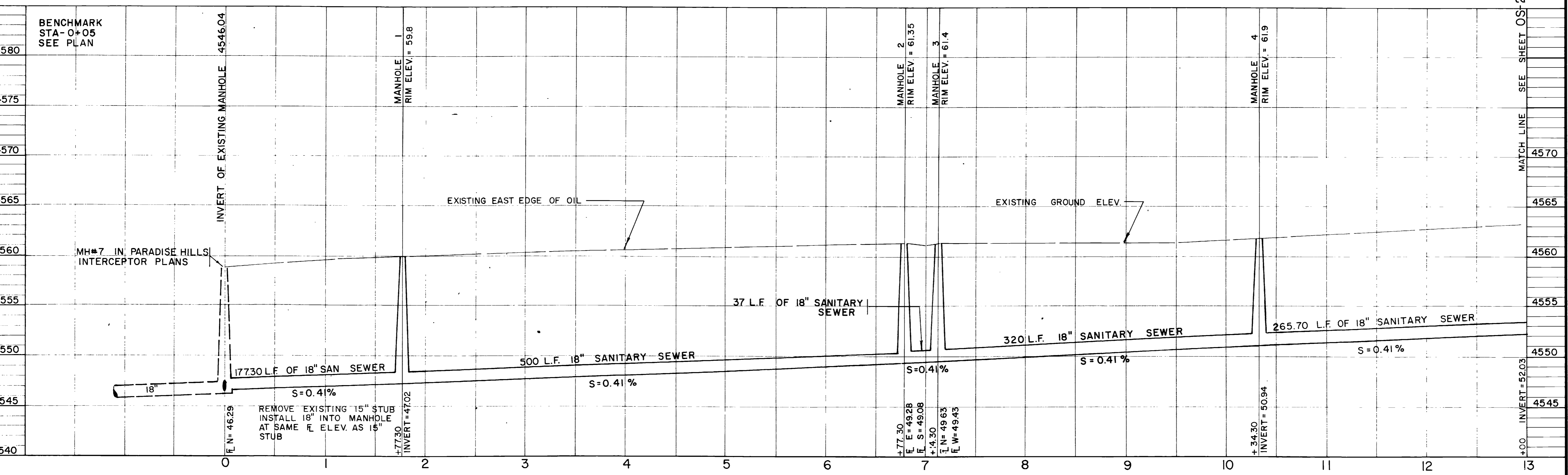
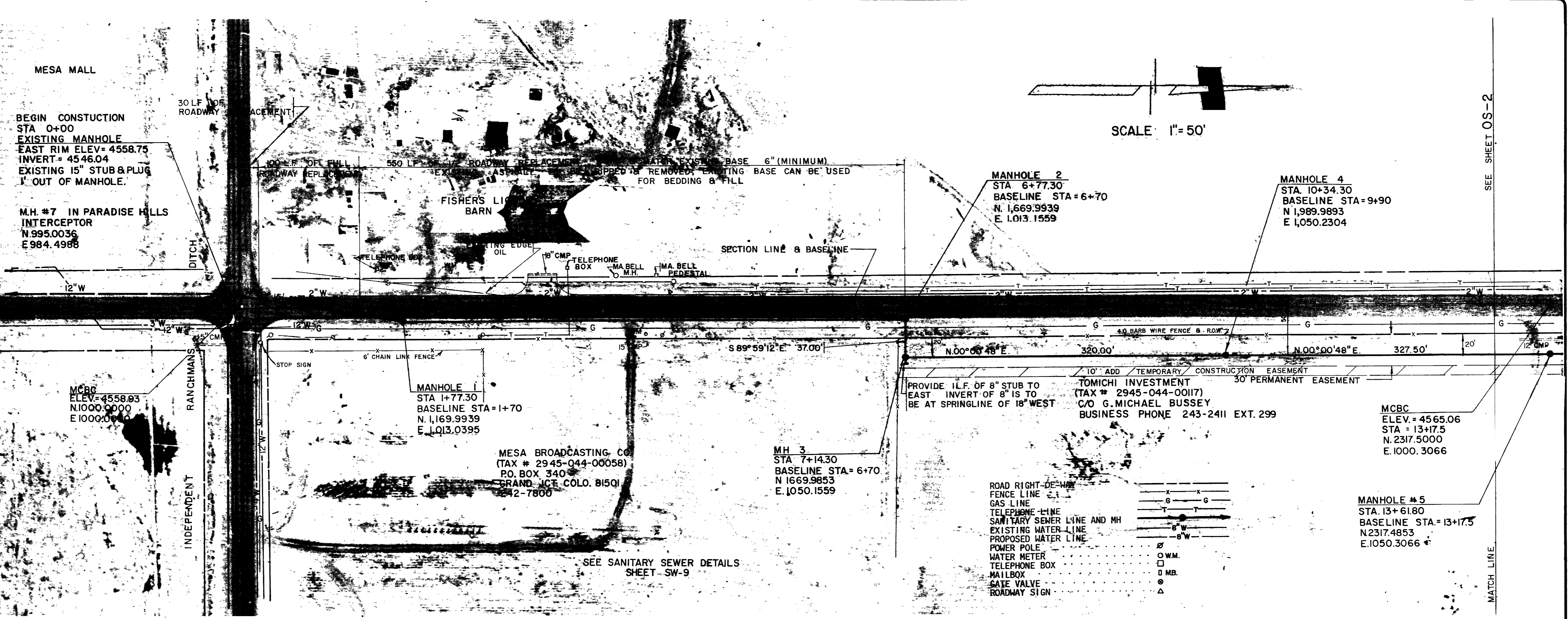


REVISIONS	BY

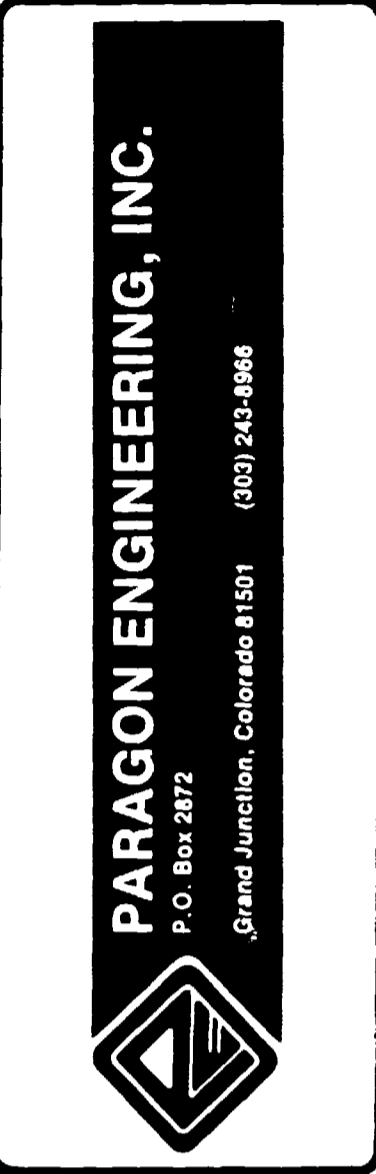
**PARAGON ENGINEERING, INC.**  
Grand Junction, Colorado 81501 (303) 243-9866



**FOUNTAINHEAD SUBDIVISION  
OFF-SITE SEWER**  
"24 1/2" RD. FROM "F" RD. TO "F 1/4" RD.

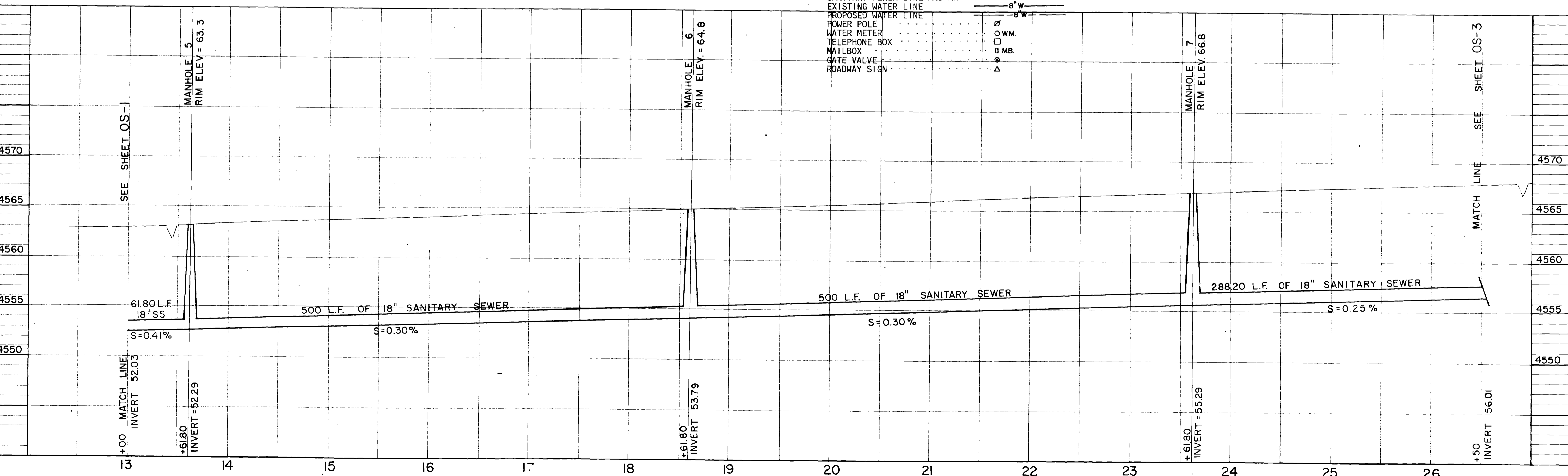
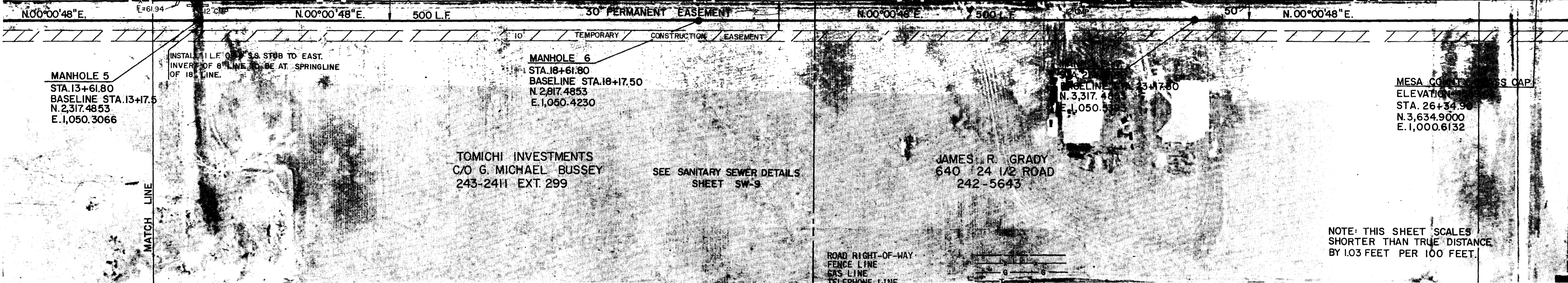
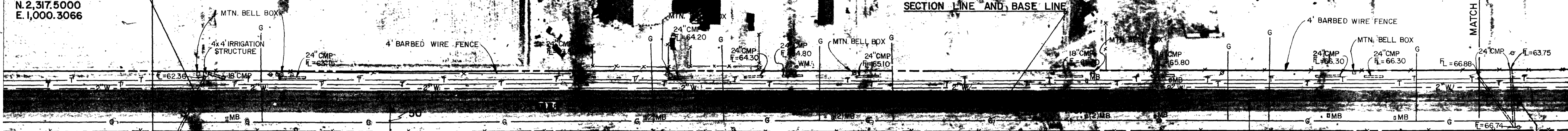


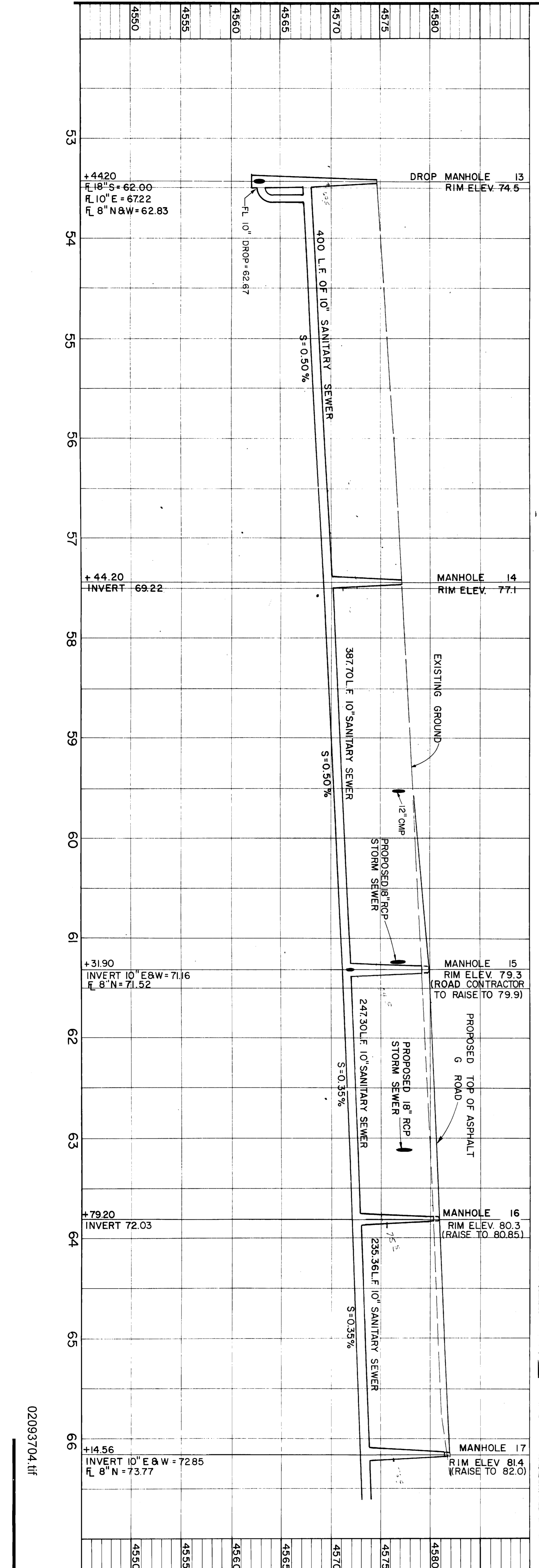
REVISIONS	BY



**FOUNTAINHEAD SUBDIVISION  
OFF-SITE SEWER**  
"24 1/2" ROAD FROM "F 1/4" ROAD  
TO "F 1/2" ROAD

MESA COUNTY BRASS CAP  
ELEVATION = 4565.06  
STA. 13+17.50  
N. 2,317.5000  
E. 1,000.3066





LEGEND

02093704.111

SHEET  
OF 6  
SHEETS  
05-5

**FOUNTAINHEAD SUBDIVISION  
OFF-SITE SEWER**  
"G" RD. FROM "24 1/2" RD. TO "24 3/4" RD.


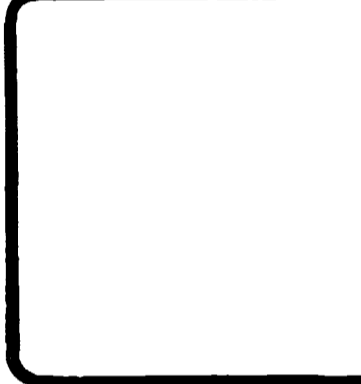
**PARAGON ENGINEERING, INC.**  
P.O. Box 2872  
Grand Junction, Colorado 81501 (303) 243-8966

REVISIONS	BY

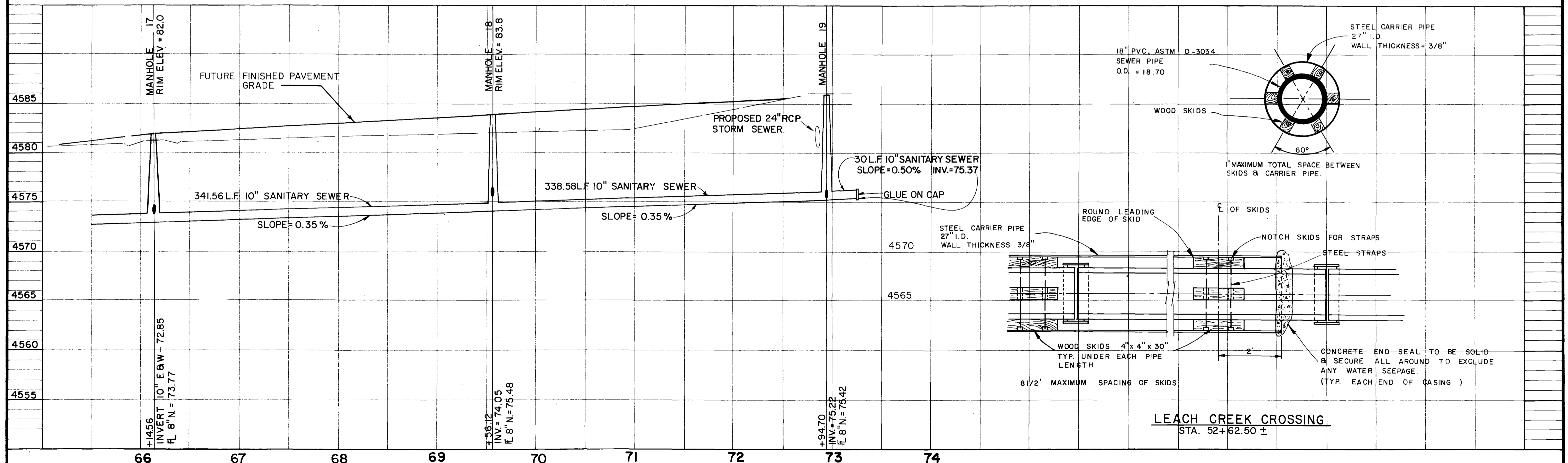
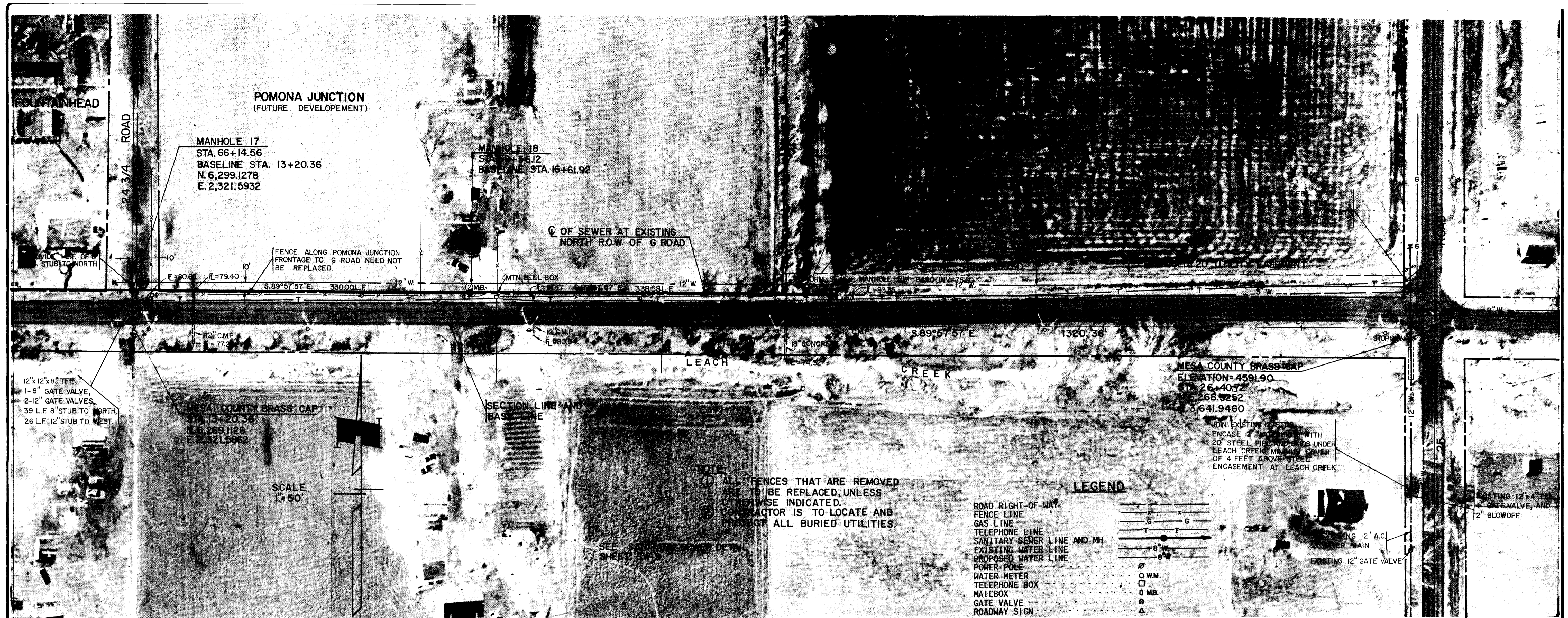
CHECKED  
DATE  
12-30-82  
SCALE  
1" = 50'

REVISIONS	BY

**PARAGON ENGINEERING, INC.**  
P.O. Box 2872  
Grand Junction, Colorado 81501 (303) 243-8966

**FOUNTAINHEAD SUBDIVISION  
OFF-SITE SEWER & WATER  
G ROAD FROM 24 3/4 TO 25 RD.  
(FOUNTAINHEAD EAST)**



Manhole #7  
Sta. 28+50

Manhole #8  
Sta. 28+50

Manhole #9  
Sta. 31+50

Manhole #10  
Sta. 34+50

Manhole #11  
Sta. 37+20

PROVIDE 1 LF OF  
6" STUB 4'0" NORTH  
OF WEST END  
OF STUB

MCBC  
ELEV. 4675.03  
STA = 53+42.30  
N 6299.9000  
E 1091.2264

MANHOLE #8  
STA 53+44.20  
BASELINE STA=0  
N 6299.8853  
E 1051.2334

CONCRETE DITCH IS TO BE  
REMOVED & RELOCATED PA  
TO SEWER 6.70' NORTH OF  
SEWER

SEWER AT EXISTING  
NORTH R.O.W. OF "G" ROAD

MANHOLE #9  
STA 57+44.20  
BASELINE STA=4+50  
N 6299.6468  
E 1451.2333

MANHOLE #10  
STA 63+78.26  
BASELINE STA=3+70  
N 6,299.4000  
E 1,838.9333

MANHOLE #11  
STA 68+45.56  
BASELINE STA=10+85  
N 6,299.2681  
E 2,086.2332

MANHOLE #11  
STA 68+45.56  
BASELINE STA=10+85  
N 6,299.2681  
E 2,321.5932



LEACH CREEK

100 LF OF 27" WELDED STEEL

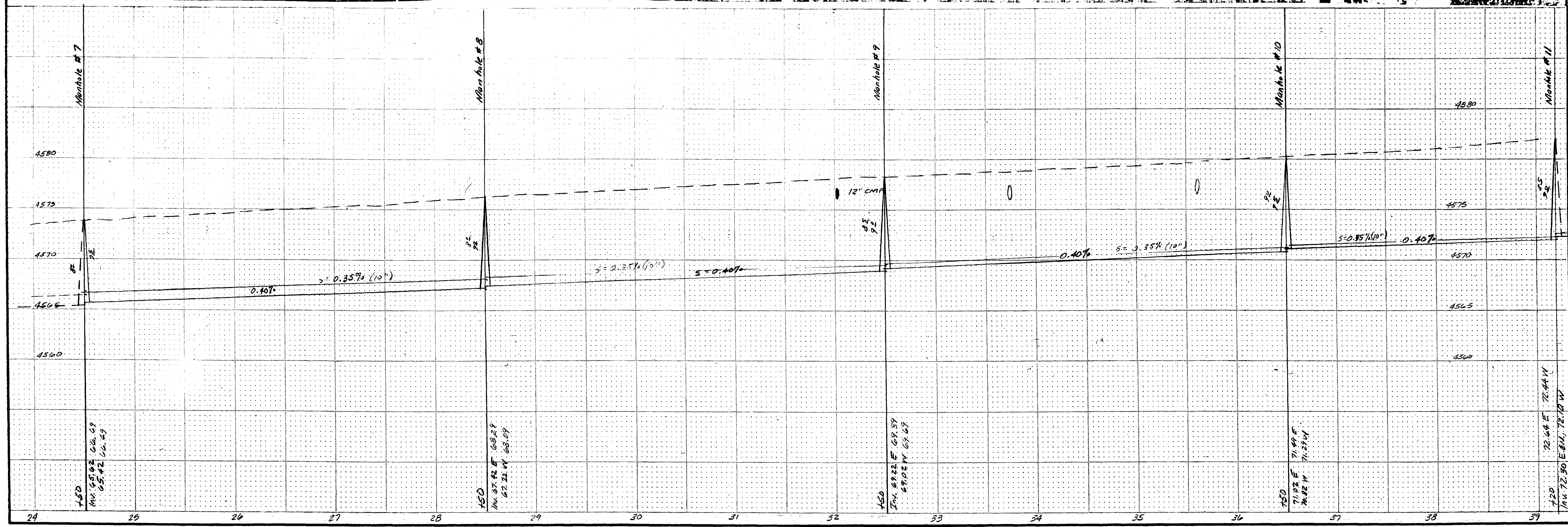
NOTES: ALL FENCES THAT ARE REMOVED ARE  
TO BE REINSTATED AT THE SAME  
LOCATION. ALL UTILITIES ARE BURIED  
AT THE SAME DEPTH AS THE  
EXISTING UTILITIES. ALL UTILITIES  
TO BE REMOVED ARE TO BE  
RELOCATED TO THE NORTH OF  
THE SEWER LINE.

SEE SAME SEWER DESIGN SHEET SW 4

LEGEND

- ROAD RIGHT-OF-WAY
- FENCE LINE
- GAS LINE
- TELEPHONE LINE
- SANITARY SEWER LINE AND HY
- EXISTING WATER LINE AND HY
- PROPOSED WATER LINE
- POWER POLE
- WATER METER
- TELEPHONE BOX
- TRUNK
- DATE VALVE
- ROADWAY SIGN

NO.	DATE	BY



FOUNTAINHEAD

POMONA JUNCTION  
(FUTURE DEVELOPMENT)

MANHOLE #11  
STA. 66+14.56 39+20  
BASELINE STA. 13+20.36  
N. 6,299.1278  
E. 2,321.5932

MANHOLE #12  
STA. 68+56.12 42+60  
BASELINE STA. 16+61.92

Q OF SEWER AT EXISTING  
NORTH R.O.W. OF G ROAD

FENCE ALONG POMONA JUNCTION  
FRONTAGE TO G ROAD NEED NOT  
BE REPLACED.

24 3/4 ROAD

S. 89° 57' 57" E. 330.00 L.F. 12" W. 12" CONCRETE

12"x12"x8" TEE,  
1-8" GATE VALVE,  
2-12" GATE VALVES,  
39 L.F. 8" STUB TO NORTH,  
26 L.F. 12" STUB TO WEST.

MESA COUNTY BRASS CAP  
STA. 13+20.36  
N. 6,299.1278  
E. 2,321.5932

SECTION LINE AND  
BASELINE

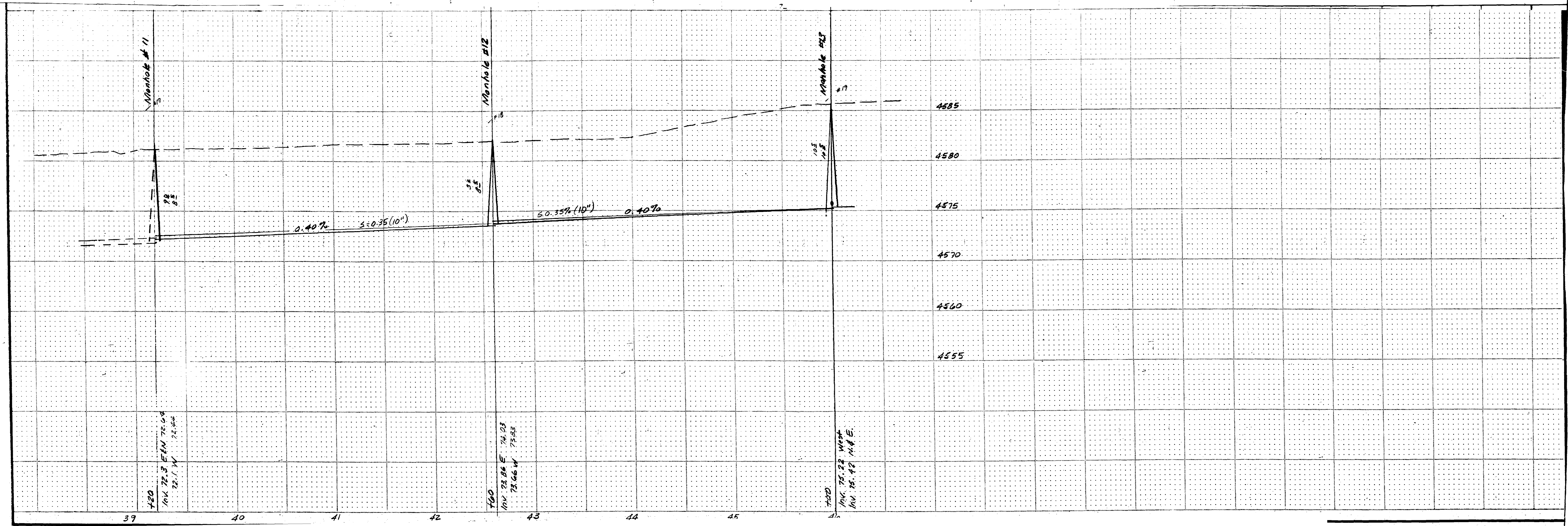
ALL FENCES THAT ARE REMOVED  
ARE TO BE REPLACED, UNLESS  
OTHERWISE INDICATED.  
CONTRACTOR IS TO LOCATE AND  
PROTECT ALL BURIED UTILITIES.

LEGEND

- ROAD RIGHT-OF-WAY
- FENCE LINE
- GAS LINE
- TELEPHONE LINE
- SANITARY SEWER LINE AND MH
- EXISTING WATER LINE
- PROPOSED WATER LINE
- POWER POLE
- WATER METER
- TELEPHONE BOX
- MAILBOX
- GATE VALVE
- ROADWAY SIGN

MESA COUNTY BRASS CAP  
ELEVATION=4591.90  
STA. 26+40.72  
N. 68.9252  
E. 2641.9460

JOIN EXISTING 12" SEWER  
ENCASE IN 24" CONCRETE WITH  
20" STEEL PIPE UNDER  
LEACH CREEK. MINIMUM COVER  
OF 4 FEET ABOVE STEEL  
ENCASEMENT AT LEACH CREEK.



DATE	
BY	
SURVEYED	
GRADES CHECKED	
NOTE BOOK	
NO.	