



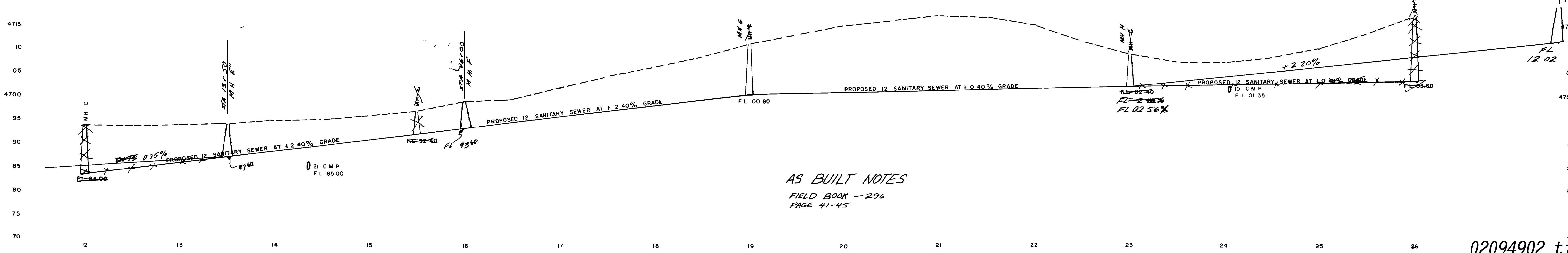
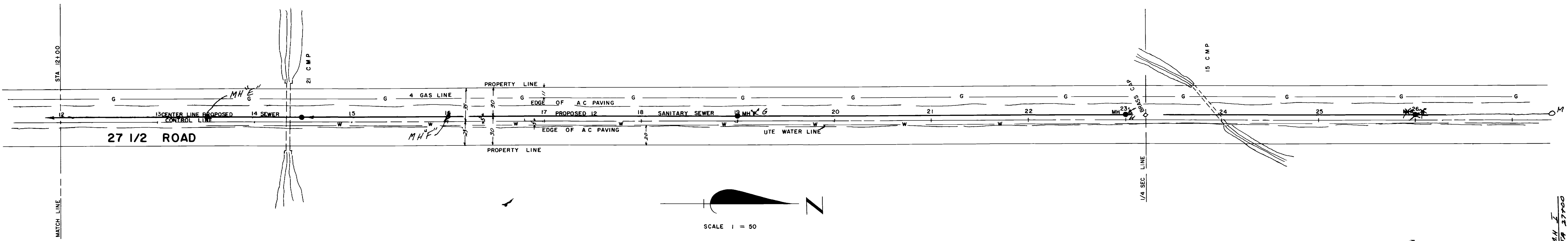
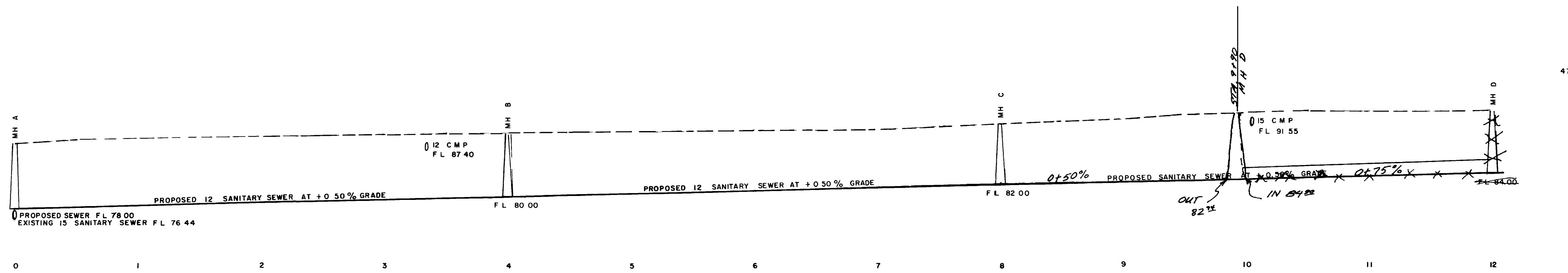
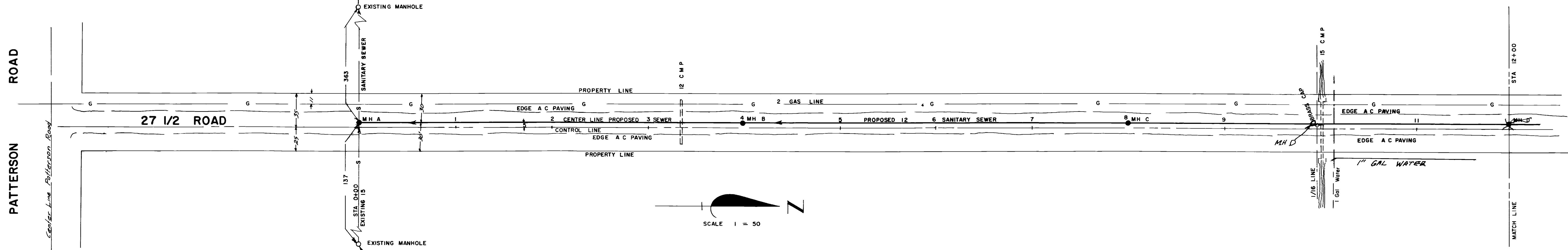
INDEX	
JOB-1-	27 1/2 Road Sanitary Trunk Sewer
JOB-2-	28 1/4 Rd — Texas Ave Storm Sewer
JOB-3-	10th Street Storm Sewer
JOB-4-	Bass St — West Mesa Ave Storm Sewer

**STORM & SANITARY SEWER  
PROJECTS  
1973**

**CITY OF GRAND JUNCTION  
COLO.**

<b>ENGINEERING DEPARTMENT</b> City of GRAND JUNCTION <b>STORM &amp; SANITARY SEWER PROJECTS</b> 1973	
DRWN BY <u>J.C. EW</u>	<b>APPROVED BY</b> <u>[Signature]</u> CITY ENGINEER
DATE <u>JAN 1973</u>	
SCALE <u>AS SHOWN</u>	
FIELD BOOK: <u>294 - 296</u> <u>299</u>	

# 27 1/2 ROAD SANITARY TRUNK SEWER



AS BUILT NOTES  
 FIELD BOOK - 296  
 PAGE 41-45