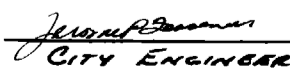
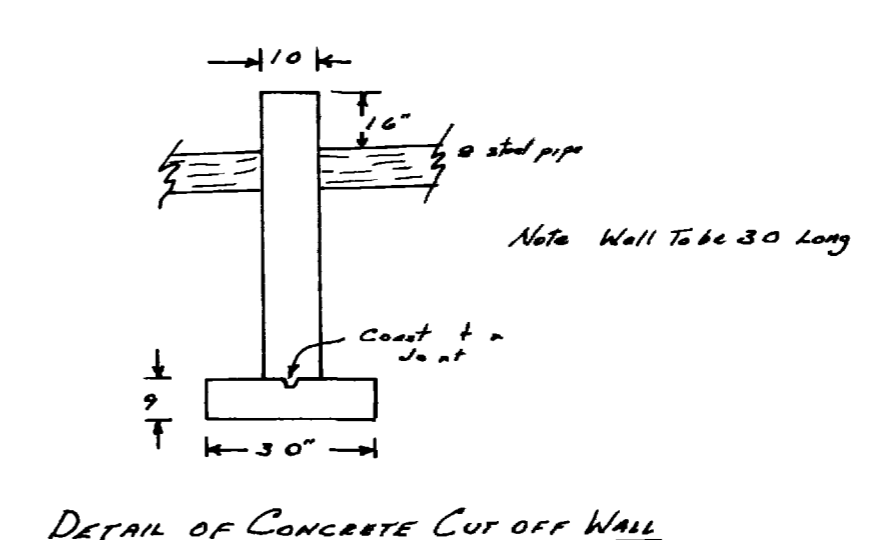
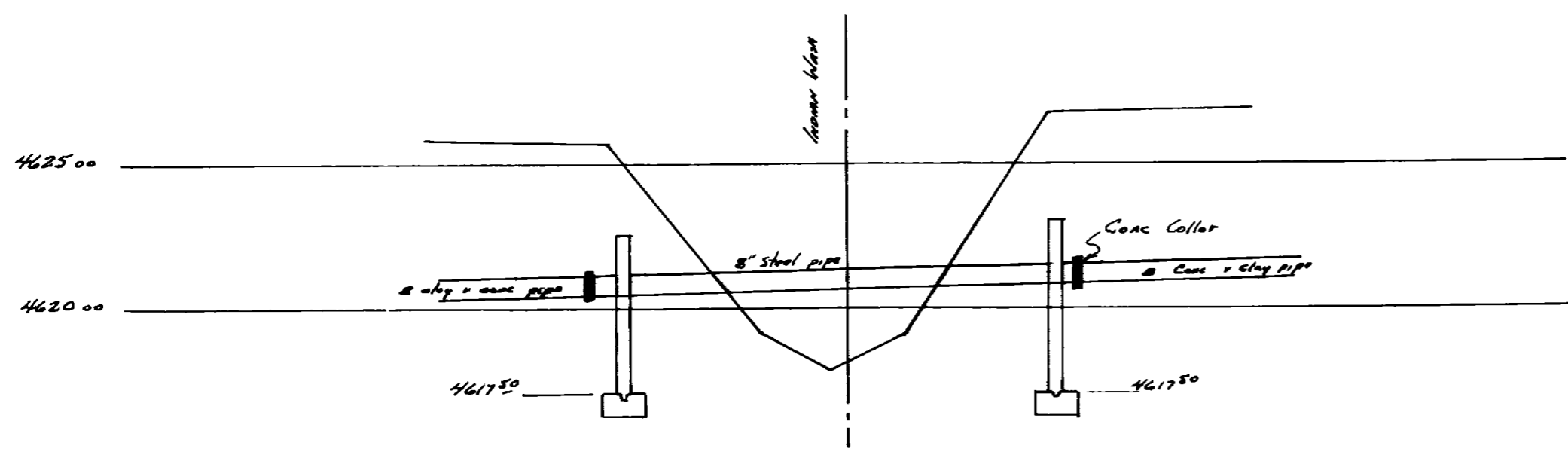
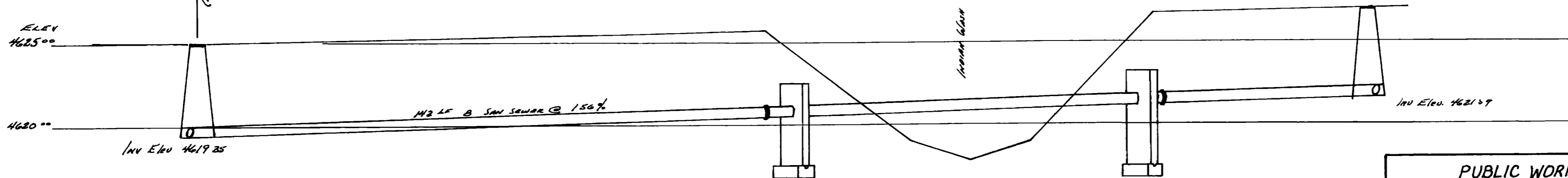
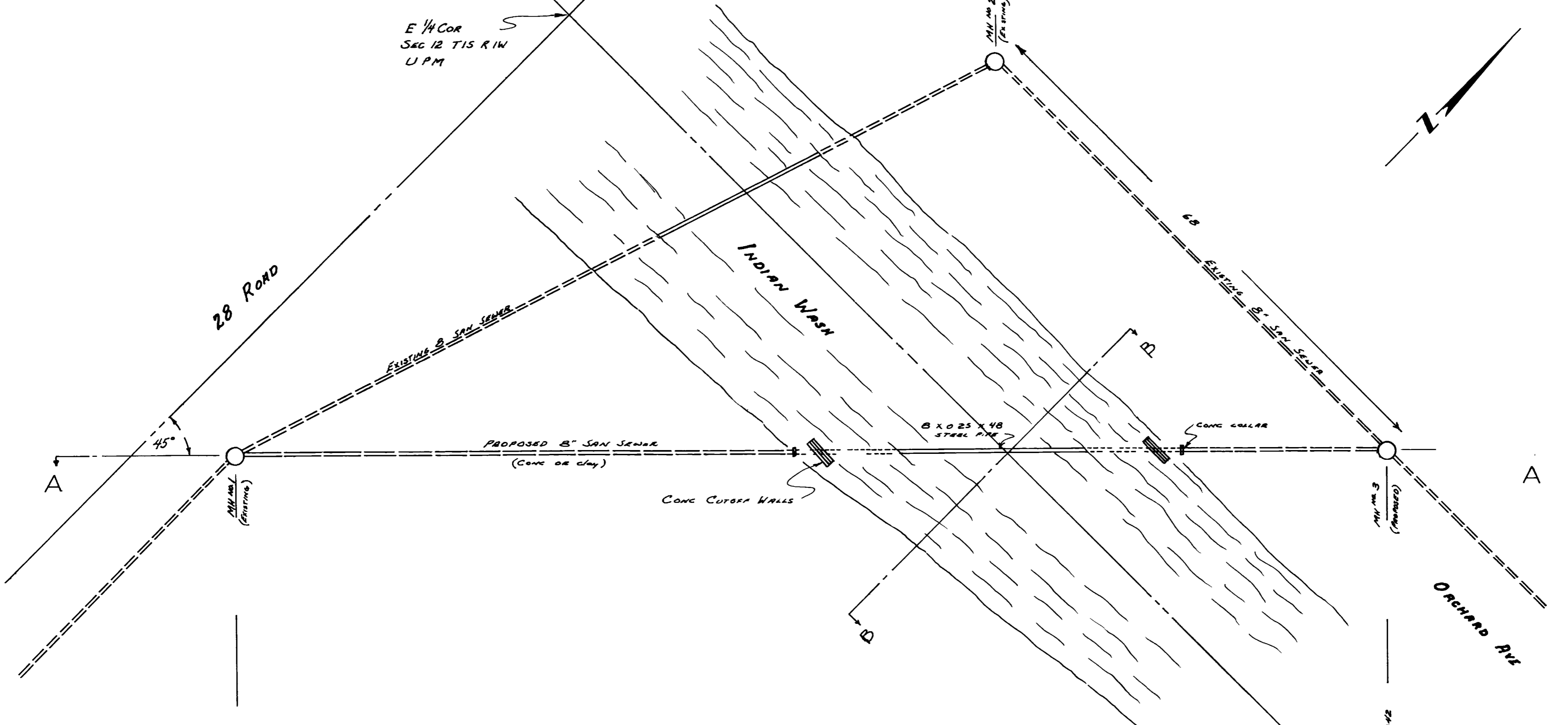
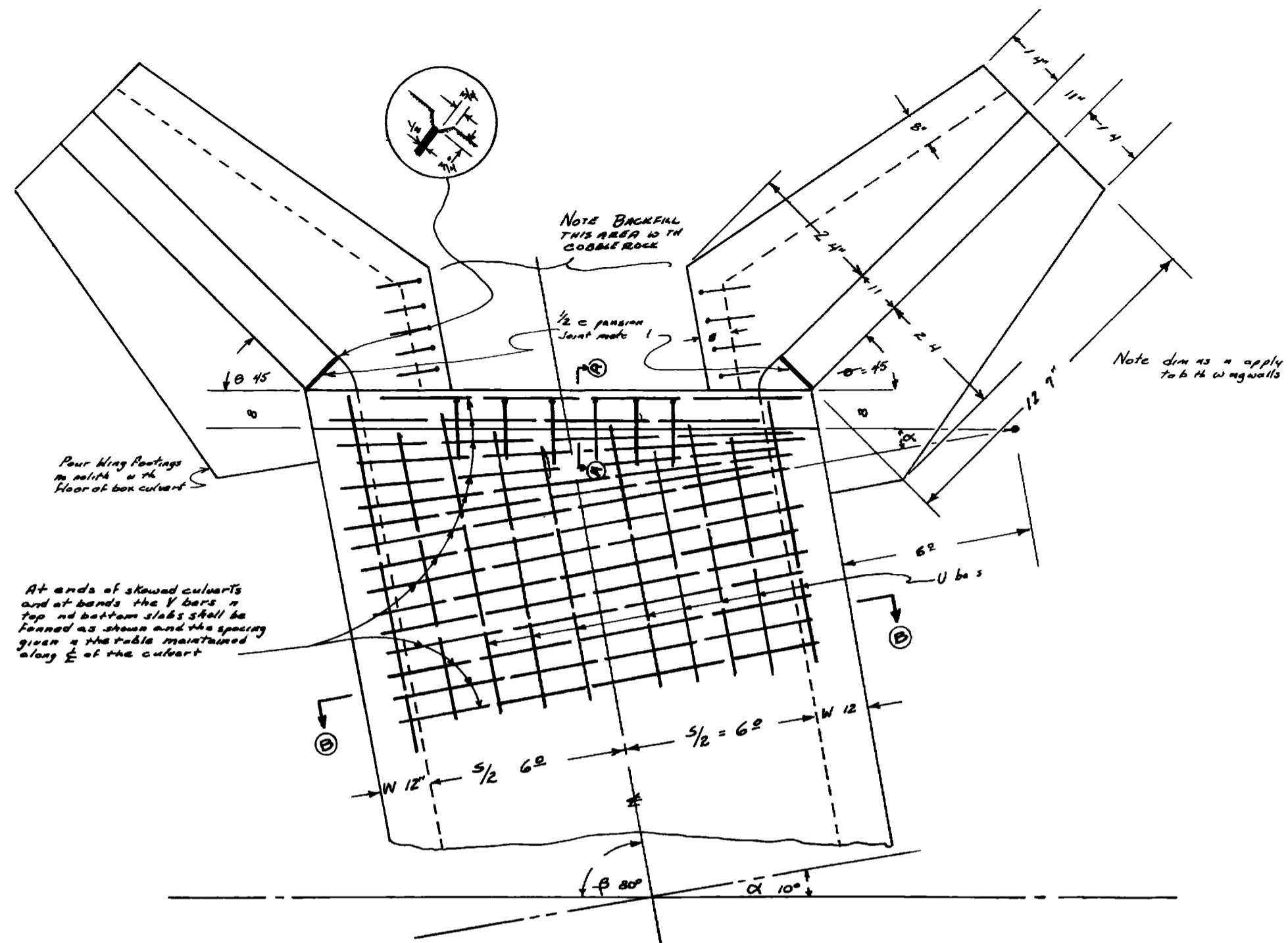


| | | |
|--|--|--------------------|
| PUBLIC WORKS DEPT ENGINEERING DIVISION CITY OF GRAND JUNCTION COLORADO | | |
| REINFORCED CONCRETE BOX CULVERT @ 28 ROAD AND ORCHARD AVE | | |
| DWG 974 126-62 CHKD | APPROVED  CITY ENGINEER | |
| SCALE HOR 1" = 20' VERT | FIELD NOTES BK 230 PP 72 75 | SHEET NO 1 OF 4 |

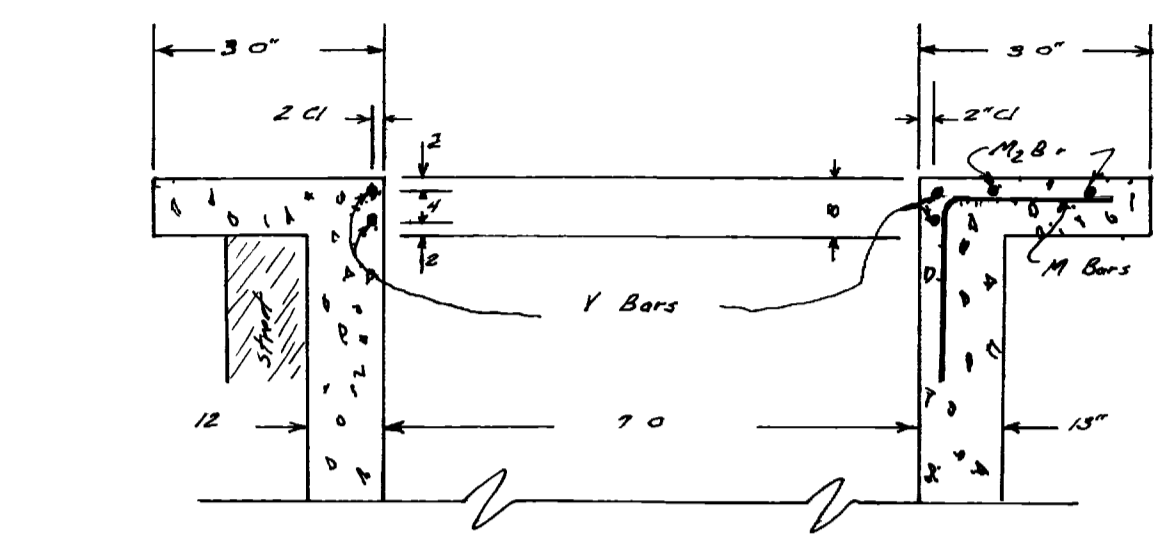
02095001.tif



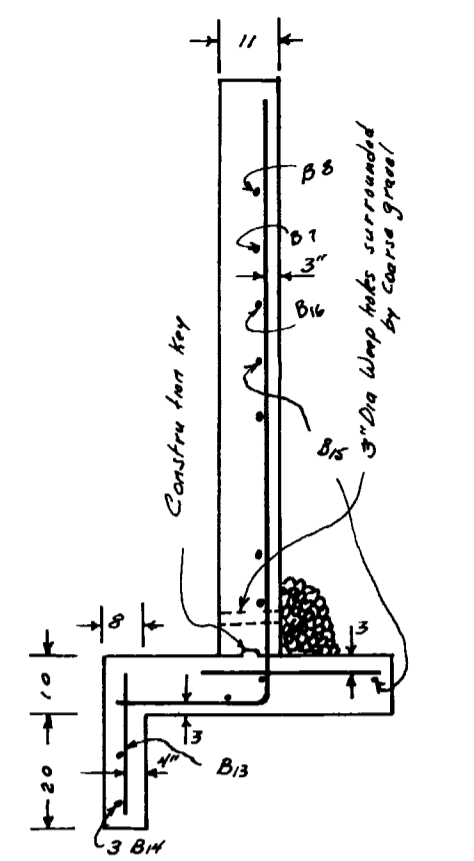
| | | |
|---|--------------------------------|--|
| PUBLIC WORKS DEPT ENGINEERING DIV CITY OF GRAND JUNCTION COLORADO | | |
| RELOCATION OF SANITARY SEWER AT 28 ROAD AND ORCHARD AVE | | |
| DWG 987 | 1/29/62 | APPROVED |
| CHKD | | <i>Josiah Brannon</i> CITY ENGINEER |
| SCALE HOR 1" = 10' VERT 1" = 5' | FIELD NOTES BK 230 Pg 75 | SHEET NO 2 of 4 |



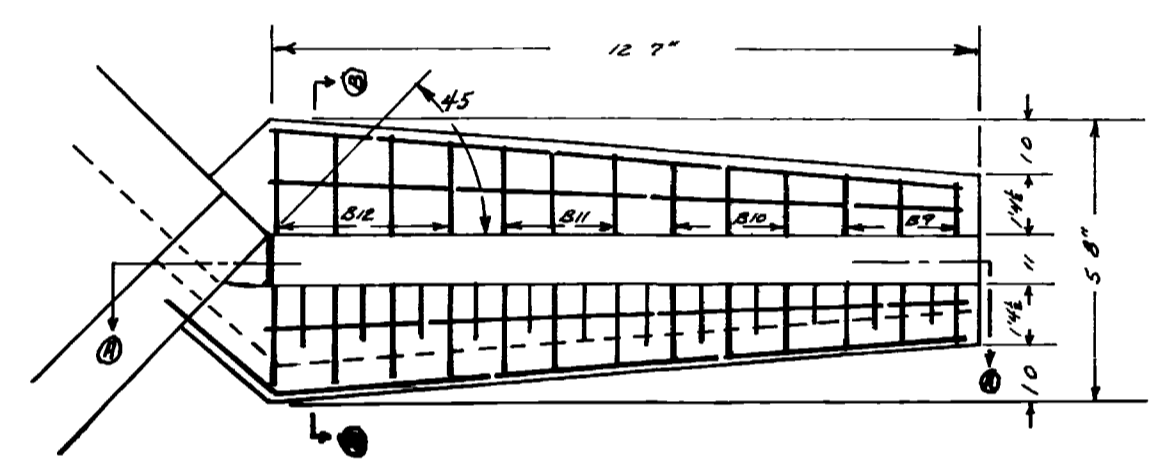
PART PLAN EAST END
(No Scale)



SECTION A-A
(No Scale)



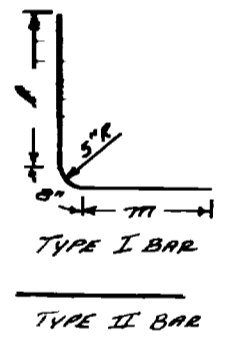
SECTION B-B WINGWALL
(No Scale)



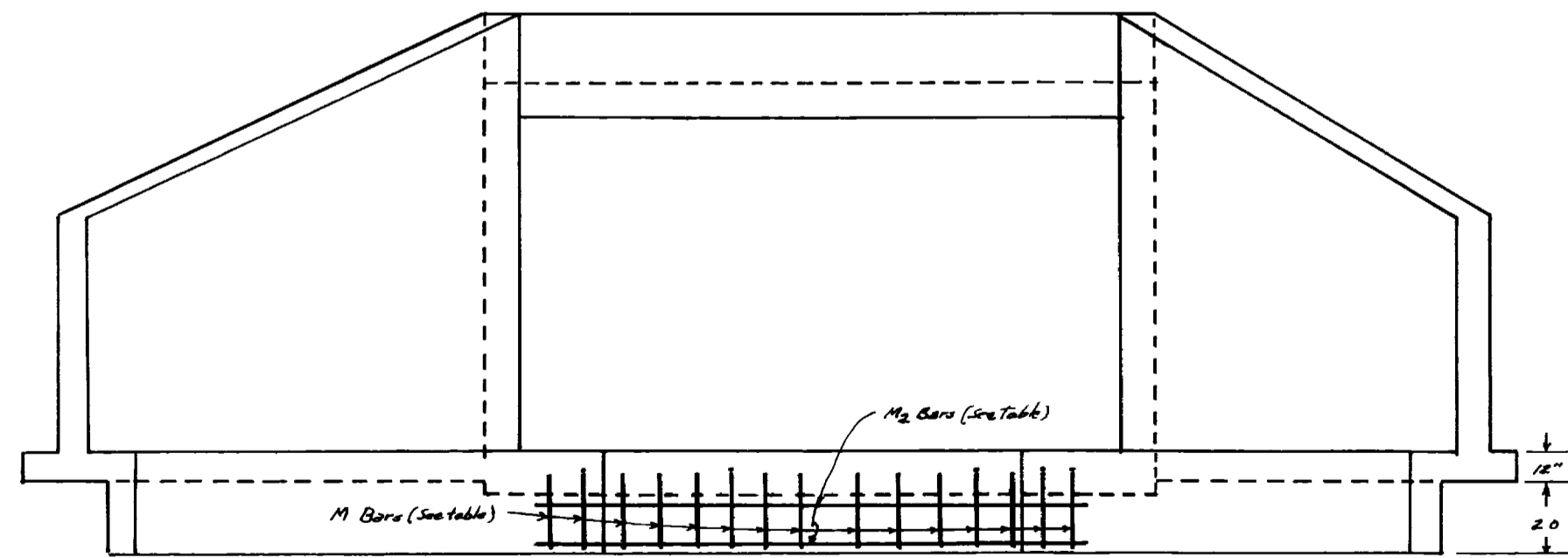
WINGWALL

BAR LIST AND QUANTITIES FOR ONE SLAB

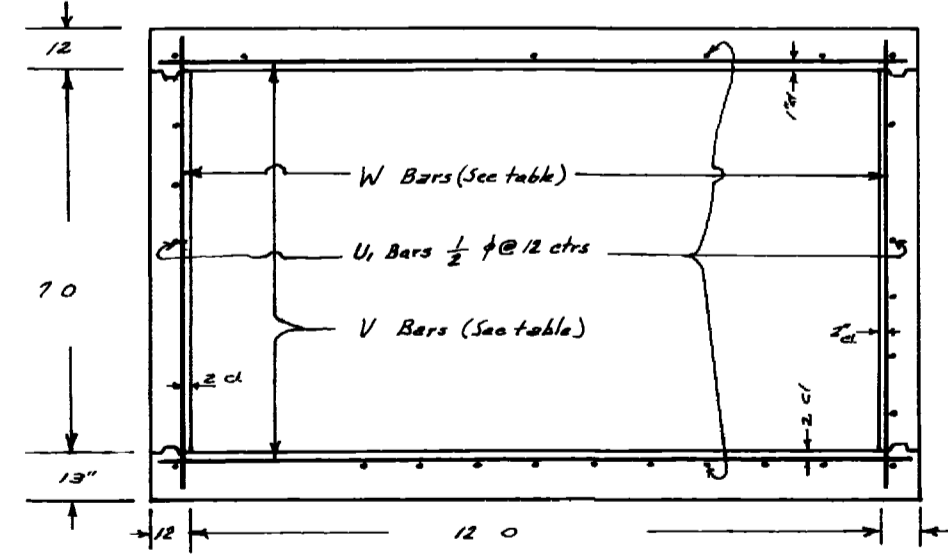
| BAR | B1 | B2 | B3 | B4 | B5 | B6 | B7 | B8 | B9 | B10 | B11 | B12 | B13 | B14 | B15 | B16 | B17 | B18 |
|--------|------|------|------|------|------|------|------|------|------|------|------|------|------|------|------|------|------|------|
| TYPE | I | I | I | I | I | I | I | II | II | II | II | II | II | II | II | II | II | II |
| SIZE | 1/2" | 1/2" | 1/2" | 1/2" | 3/8" | 3/8" | 3/4" | 1/2" | 1/2" | 1/2" | 1/2" | 1/2" | 1/2" | 1/2" | 1/2" | 1/2" | 1/2" | 1/2" |
| NUMBER | 3 | 3 | 3 | 3 | 4 | 3 | 3 | 3 | 3 | 3 | 4 | 15 | 3 | 11 | 1 | 1 | 1 | 1 |
| LENGTH | 82 | 311 | 96 | 46 | 111 | 51 | 128 | 63 | 22 | 23 | 28 | 32 | 26 | 150 | 123 | 92 | 62 | 22 |
| L | 6 | 24 | 72 | 29 | 83 | 32 | 98 | 42 | | | | | | | | | | |
| W | 1/3 | 2/11 | 1/8 | 1 | 2/5 | 1/3 | 2/5 | 1/5 | | | | | | | | | | |



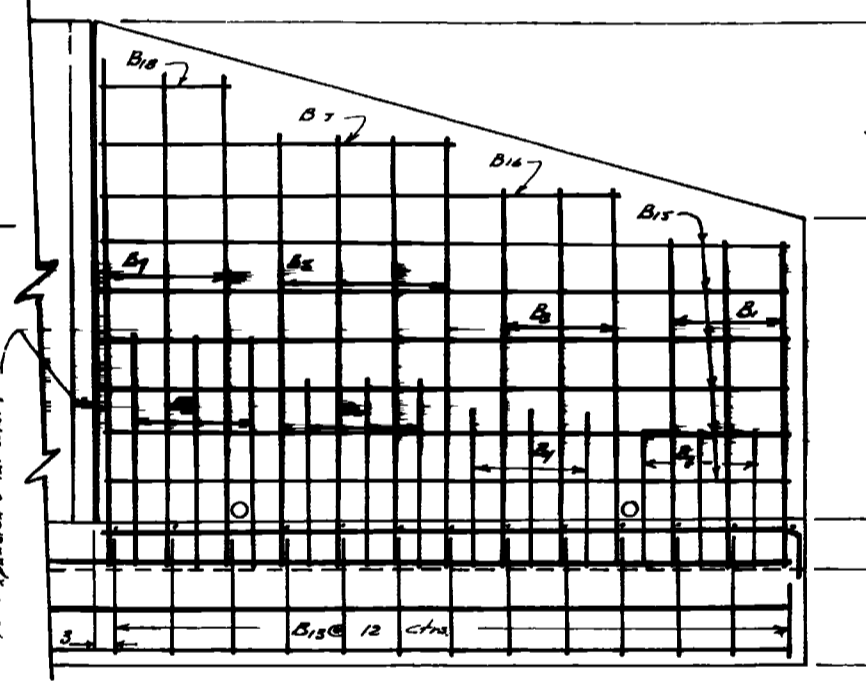
TYPE I BAR
TYPE II BAR



EAST END ELEVATION



SECTION A-A



SECTION A-A WINGWALL
(No Scale)

Note all wing walls to receive and n of surface finish

Bar dimensions are to be E of bar unless marked cl (clear)

GENERAL NOTES

- 1 All Concrete to Cla A (State Hwy Standard) and a extra d
- 2 All Wing Surfs + rec've and n y surface finish
- 3 Wing foots and floor to B + be poured in 1 th callp
- 4 When a u fng for footing, f n l n feet shall b done by hand l learn thds
- 5 Loading DATA Live/Load AASHTO (#20 SIG 44) Dead/Load conc 150 p f 20 th 84 p f

QUANTITIES FOR

| | 12' x 8' 80' G. Inlet | 1 Header 1 | 1 Wing 11 |
|-----------------|-----------------------|------------|-----------|
| Concrete Cu Yds | 1579 | 312 | 628 |
| Steel Lb | 141 | 212 | 370 |

CULVERT BAR LIST & QUANTITIES

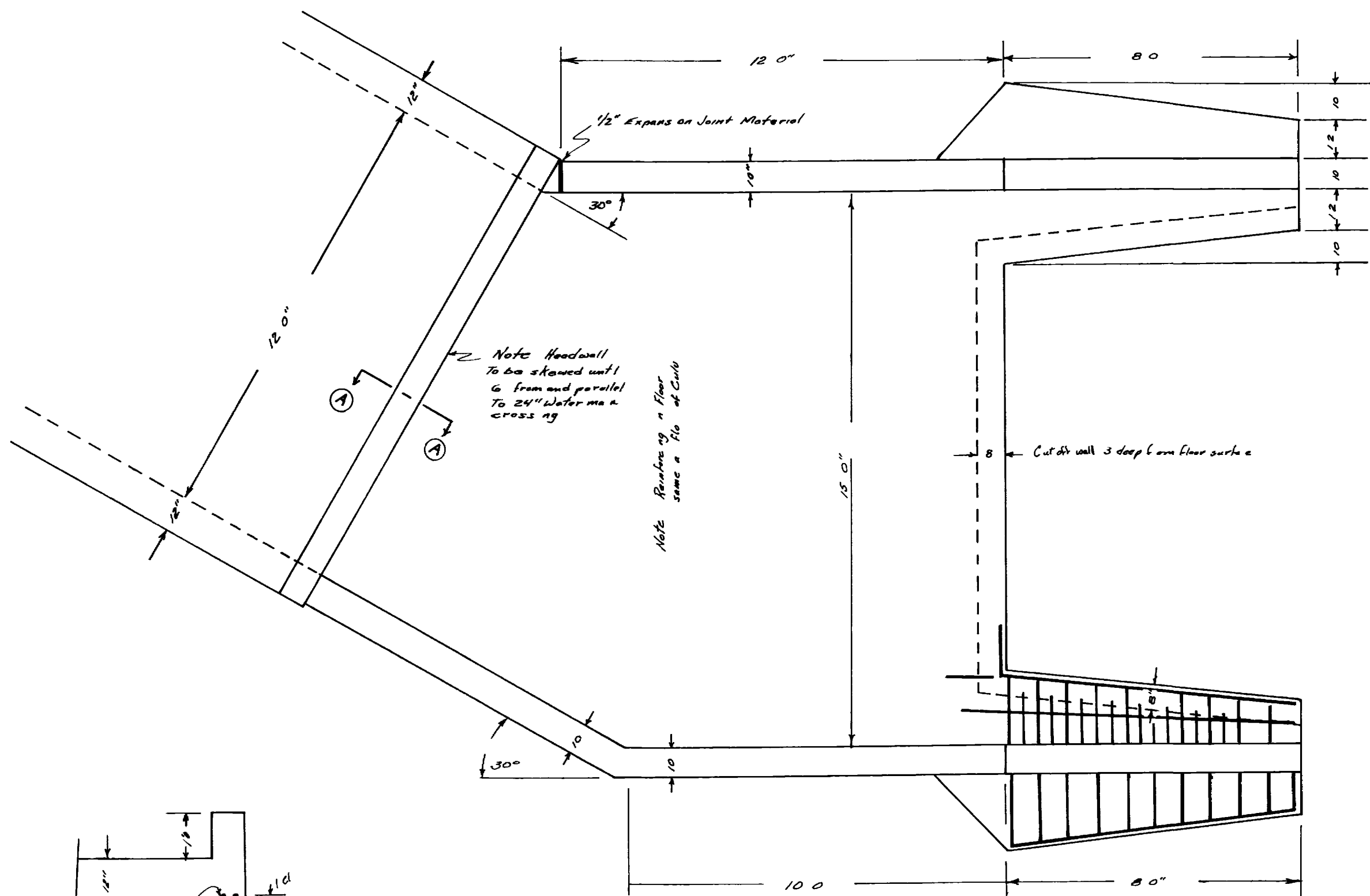
| BAR | V | W | U | M | M2 |
|---------|------|------|------|------|------|
| TYPE | II | II | II | I | II |
| SIZE | 3/8" | 1/2" | 1/2" | 1/2" | 1/2" |
| NUMBER | 10 | 87 | 6 | 381 | 261 |
| LENGTH | 136 | 87 | 1410 | 36 | 137 |
| SPACING | 7" | 7" | | | |

PUBLIC WORKS DEPT
ENGINEERING DIVISION
CITY OF GRAND JUNCTION COLORADO

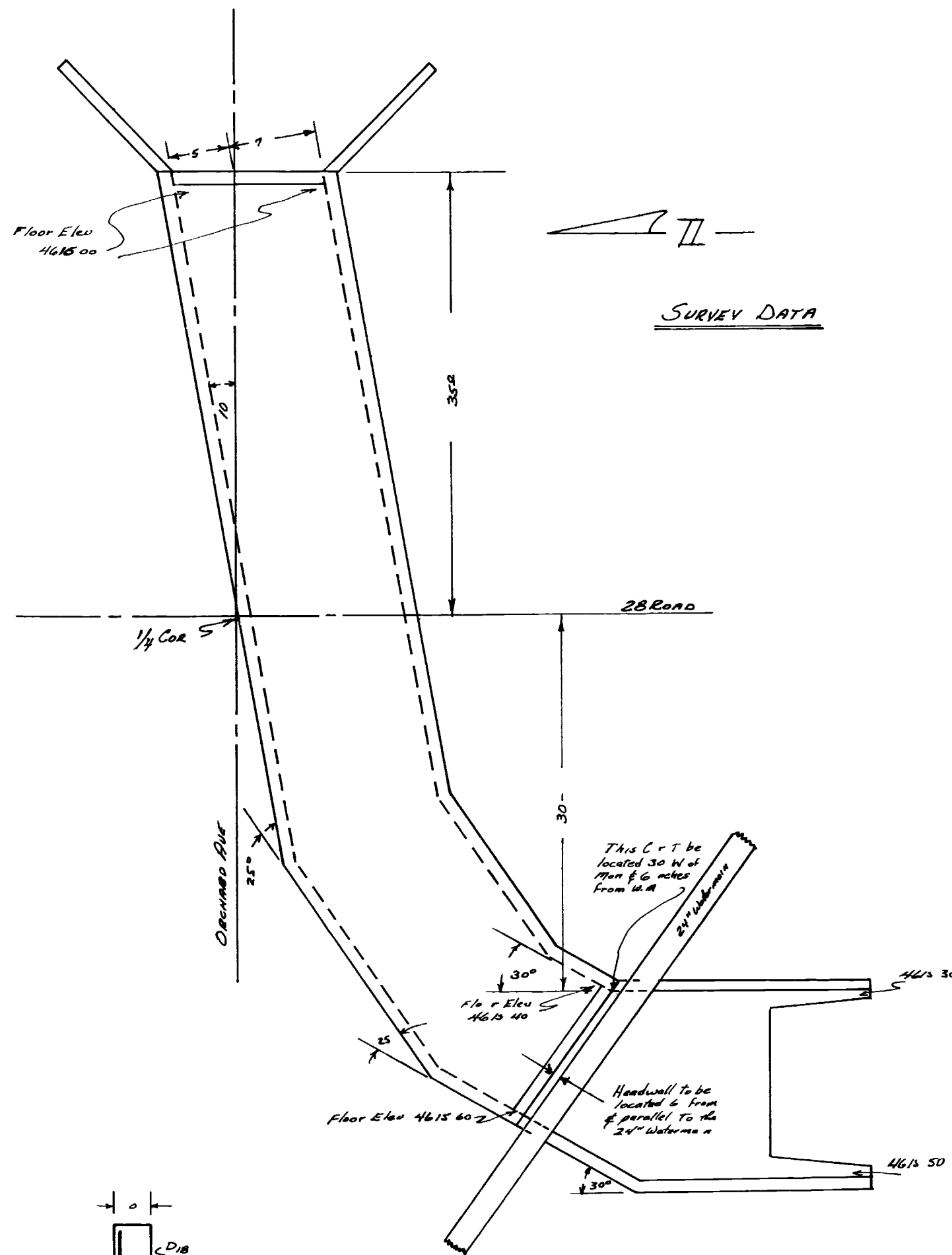
REINFORCED CONCRETE
BOX CULVERT
28 ROAD AND OCHARD AVE
DETAILS (H 20 live/Load)

DWG 774 1/30/62 Approved
ENCO *James D. Spencer*
City Engineer

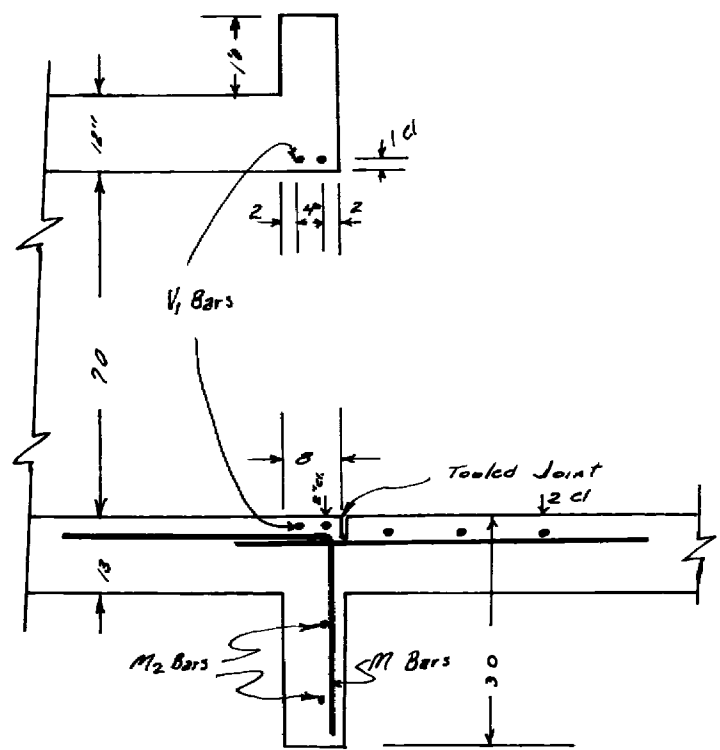
SCALE As shown FIELD NOTES See State Hwy Dept Standard M-50 SHEET NO 3 of 4



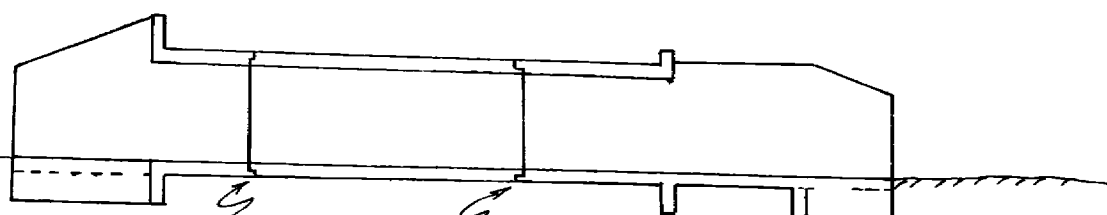
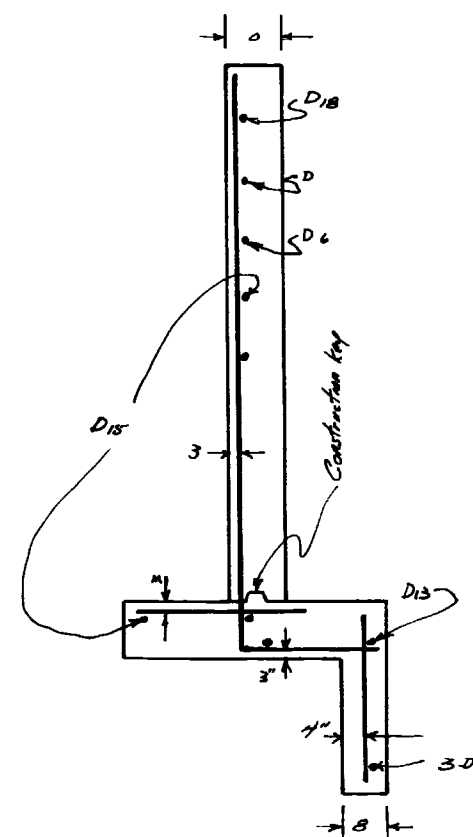
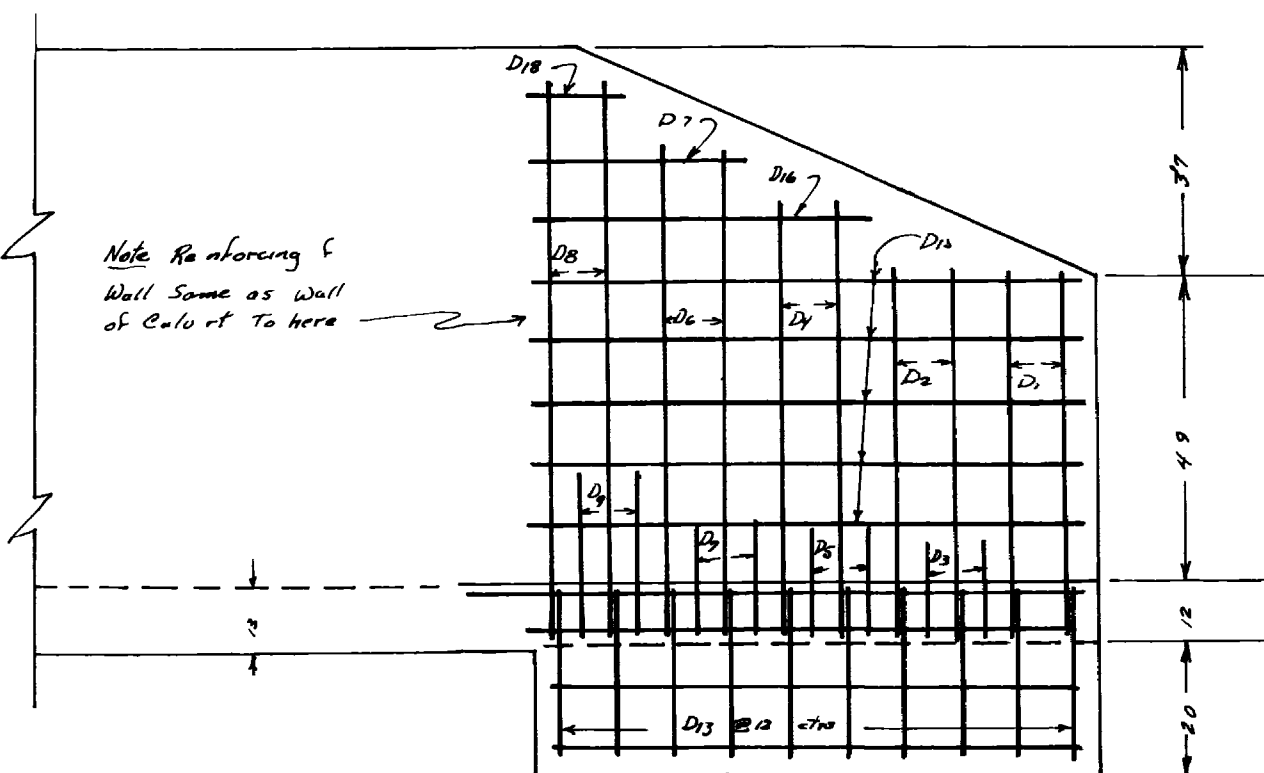
PART-PLAN - WEST END



SURVEY DATA

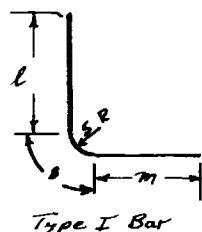


SECTION A-A



TYPICAL SECTION CULVERT

Type II Bar



Type I Bar

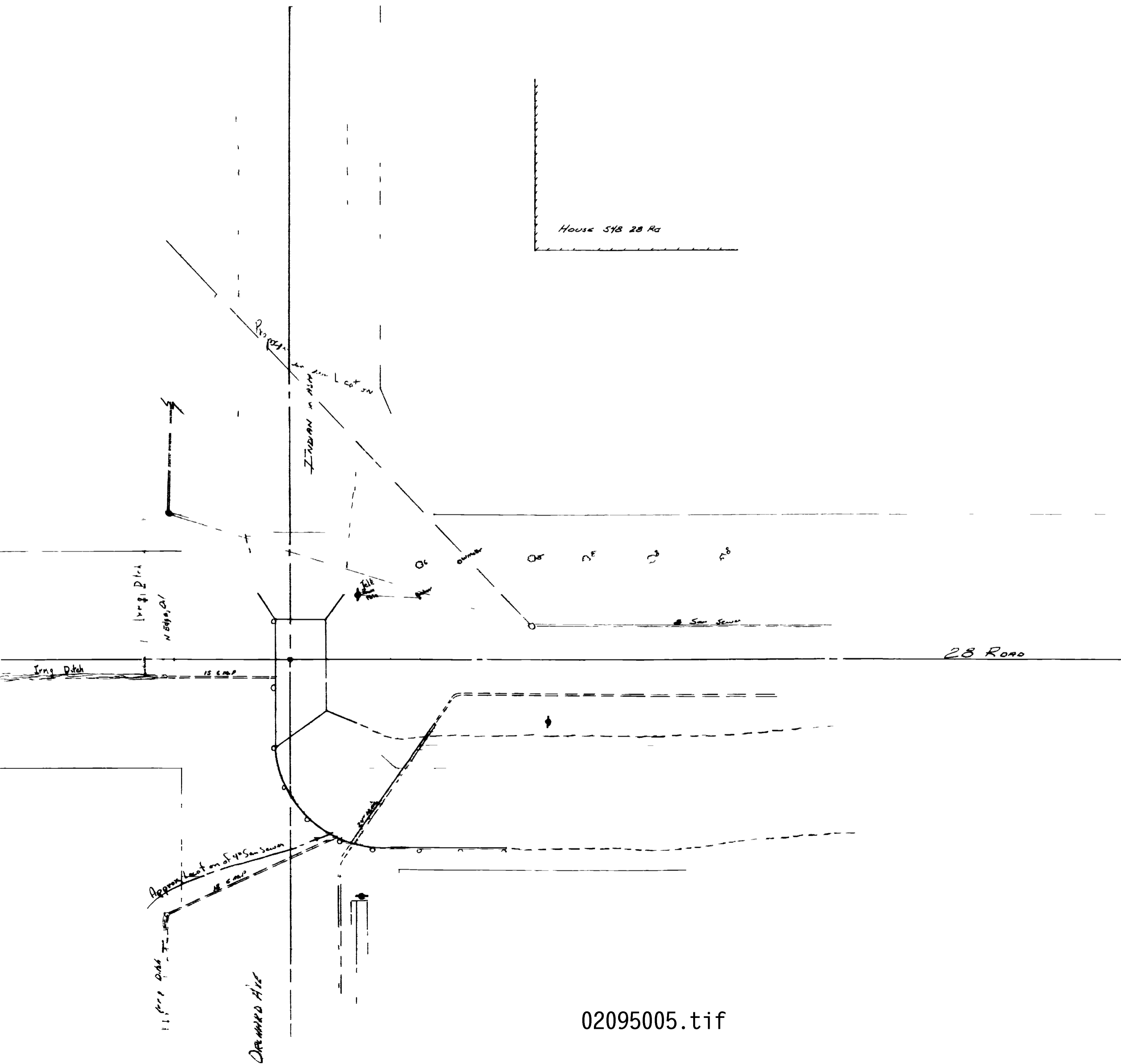
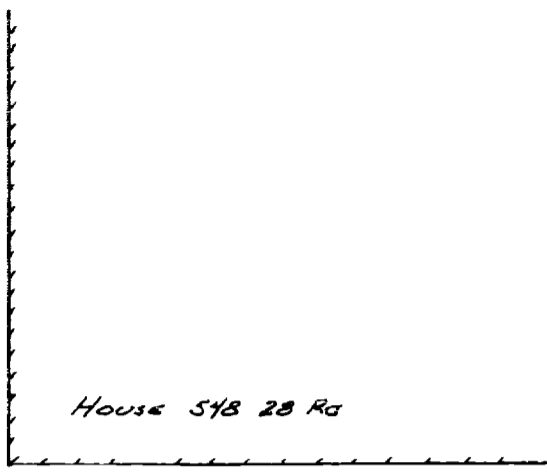
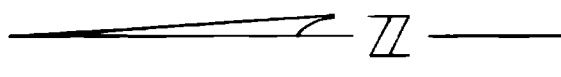
WING WALL BAR LIST & QUANTITIES FOR ONE WING

| BAR | D | D ₂ | D ₃ | D ₄ | D ₅ | D ₆ | D ₇ | D ₈ | D ₉ | D ₁₀ | D ₁₁ | D ₁₂ | D ₁₃ | D ₁₄ | D ₁₅ | D ₁₆ | D ₁₇ | D ₁₈ |
|--------|-----|----------------|----------------|----------------|----------------|----------------|----------------|----------------|----------------|-----------------|-----------------|-----------------|-----------------|-----------------|-----------------|-----------------|-----------------|-----------------|
| TYPE | I | I | I | I | I | I | I | I | I | II | II | II | II | II | II | II | II | II |
| SIZE | 1/2 | 1/2 | 1/2 | 1/2 | 1/2 | 5/8 | 5/8 | 5/8 | 5/8 | 1/2 | 1/2 | 1/2 | 1/2 | 1/2 | 1/2 | 1/2 | 1/2 | 1/2 |
| NUMBER | 2 | 1 | 2 | 2 | 2 | 2 | 1 | 1 | 2 | 3 | 3 | 9 | 3 | 10 | 1 | 1 | 1 | 1 |
| LENGTH | 77" | 36" | 87" | 31" | 98" | 93" | 104" | 98" | 20" | 23" | 27" | 26" | 94" | 75" | 42" | 22" | 12" | |
| L | 50 | 58 | 111 | 65 | 25 | 75 | 26 | 85 | 30 | | | | | | | | | |
| W | 17 | 13 | 21 | 16 | 10 | 4 | | 14 | 13 | | | | | | | | | |

PUBLIC WORKS DEPT
ENGINEERING DIVISION
CITY OF GRAND JUNCTION COLORADO

REINFORCED CONCRETE
BOX CULVERT
28 ROAD AND ORCHARD AVE
DETAILS

| | |
|-------------------|--|
| DWG 97A 21 62 | APPROVED |
| CHWD | Jeanne Panamer City Eng neer |
| SCALE As shown | FIELD NOTES See State Hwy Dept Standard M 50 |
| | SHEET No 4 of 4 |



02095005.tif