

COMBINED
GRAND

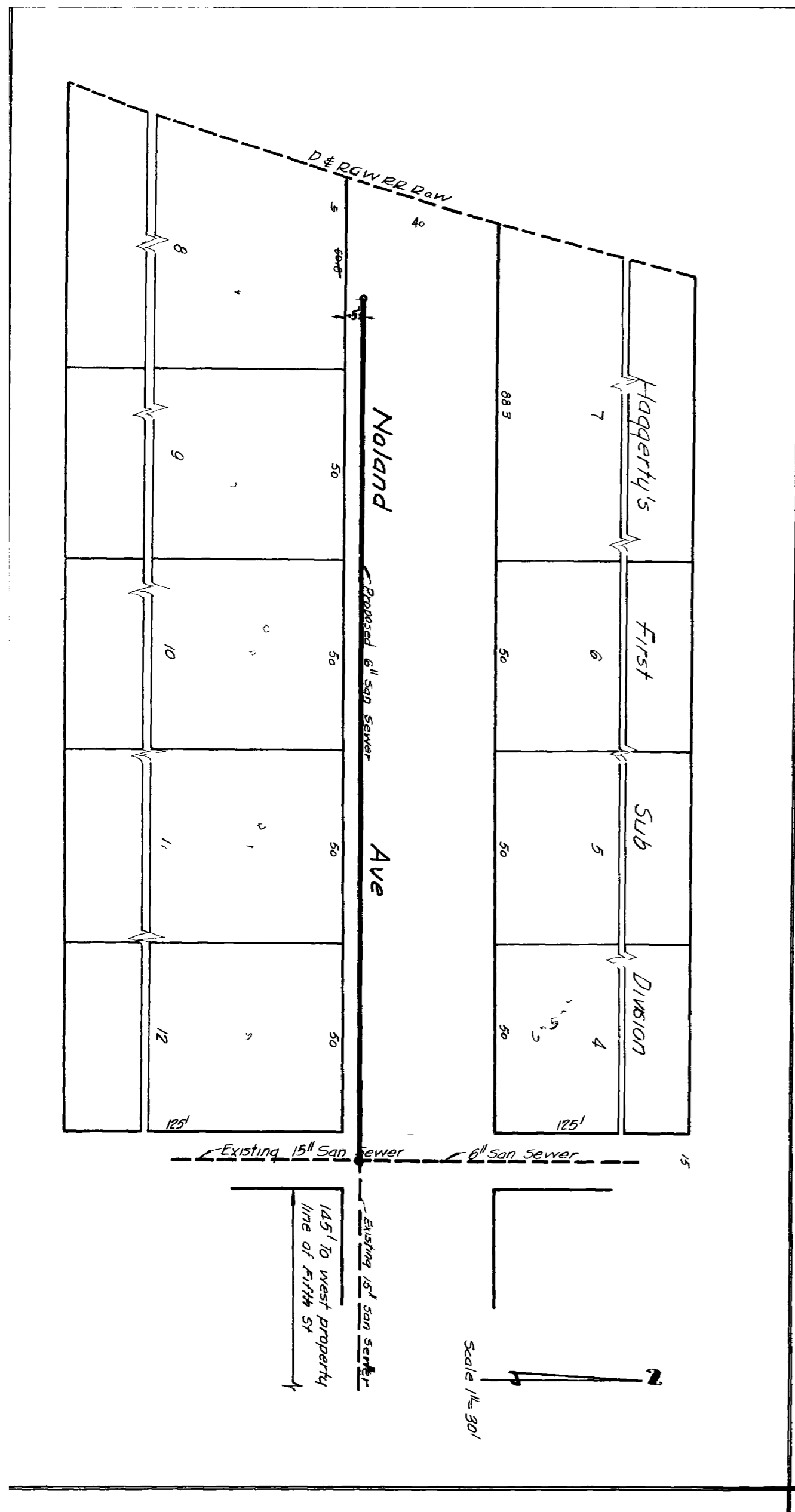
SEWER DIST. NO. 6
JUNCTION COLO.

*CONSTRUCTION STARTED
JUNE 30 1939*

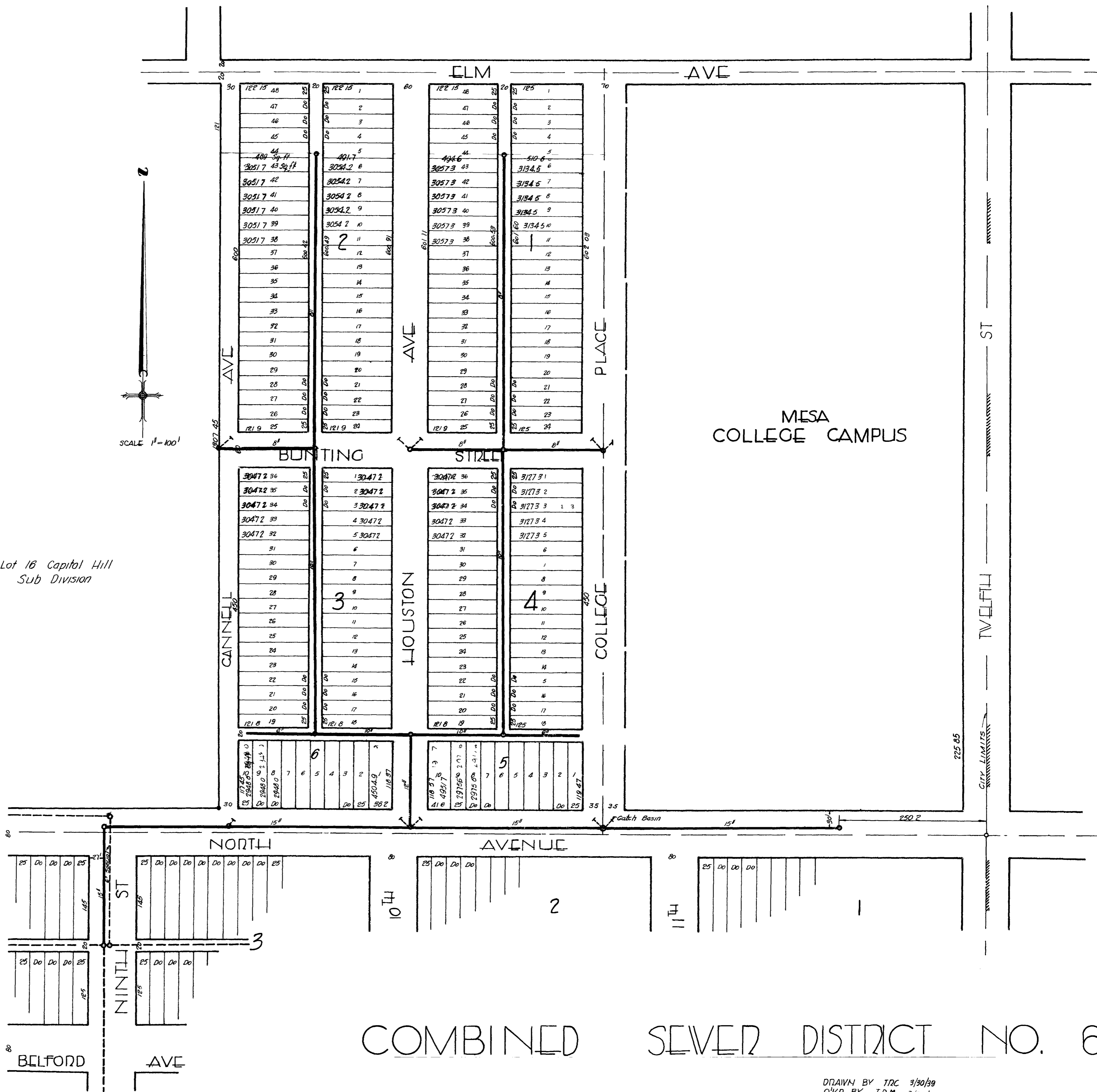
*CONSTRUCTION COMPLETED
SEPT 21, 1939*

*PLANS CORRECTED TO FIELD NOTES
SEPT 22, 1939*

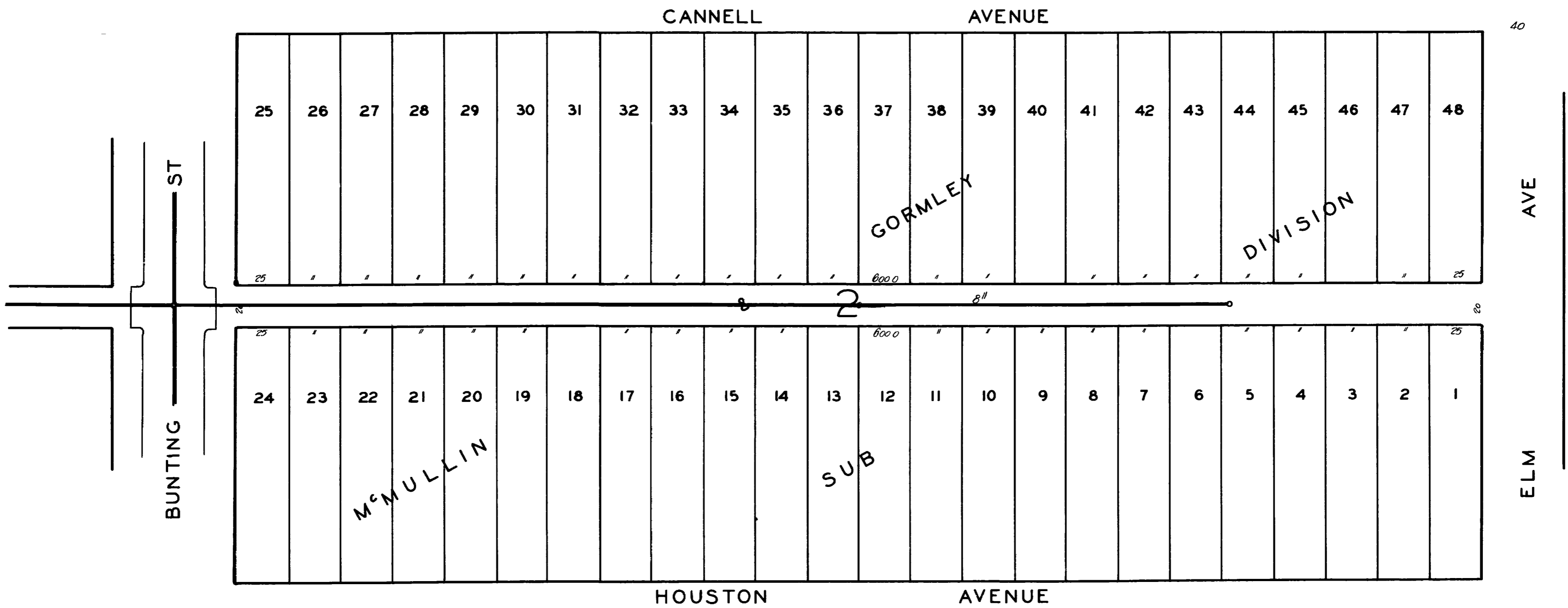
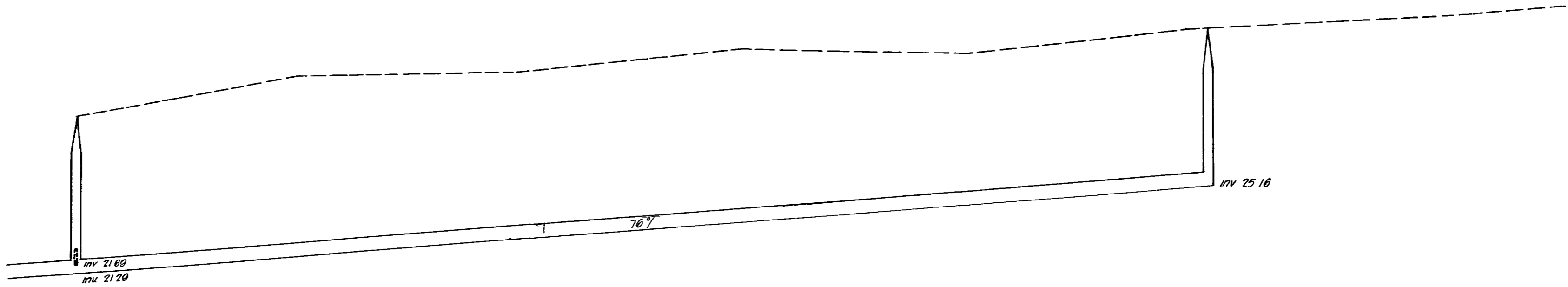
Carl M. Bennett

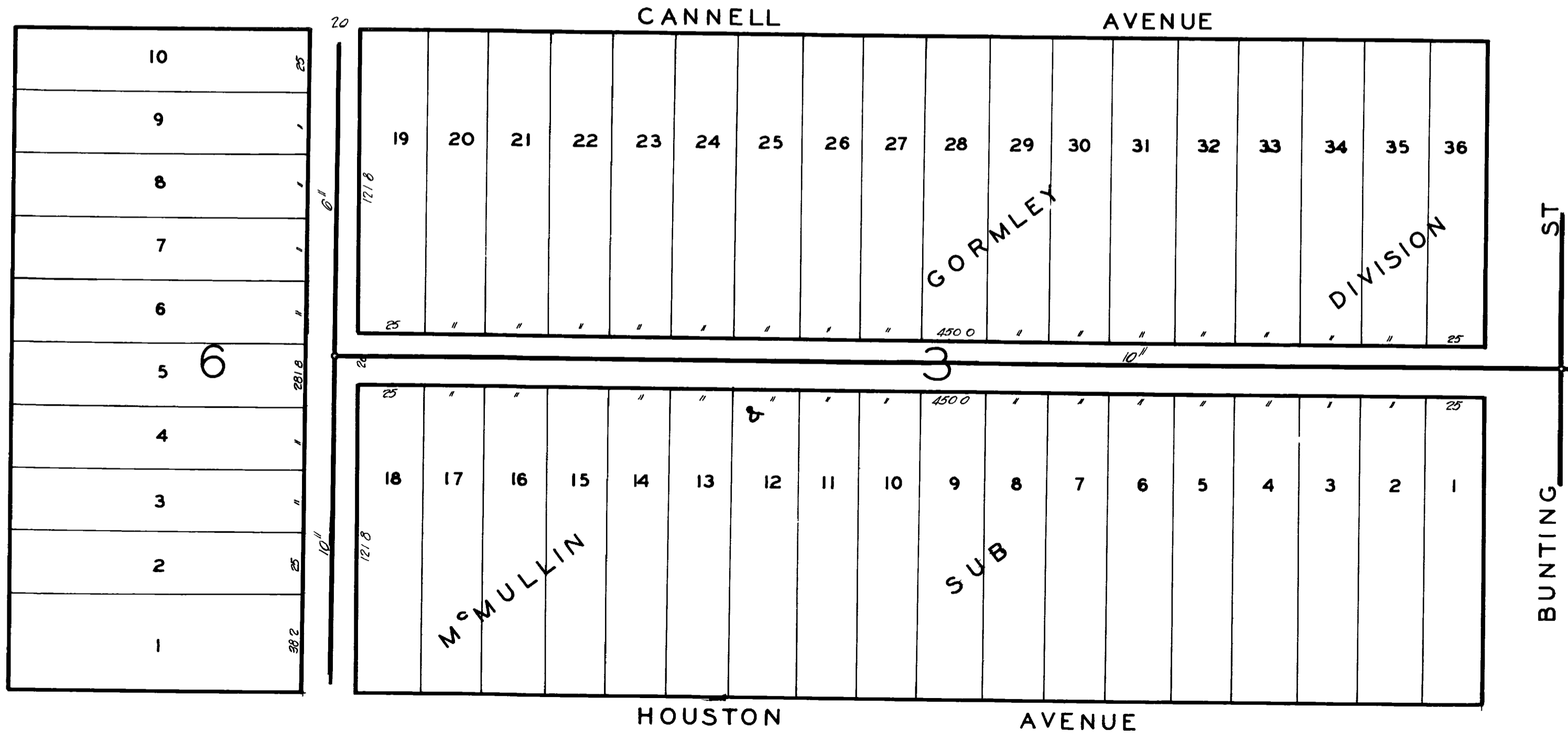
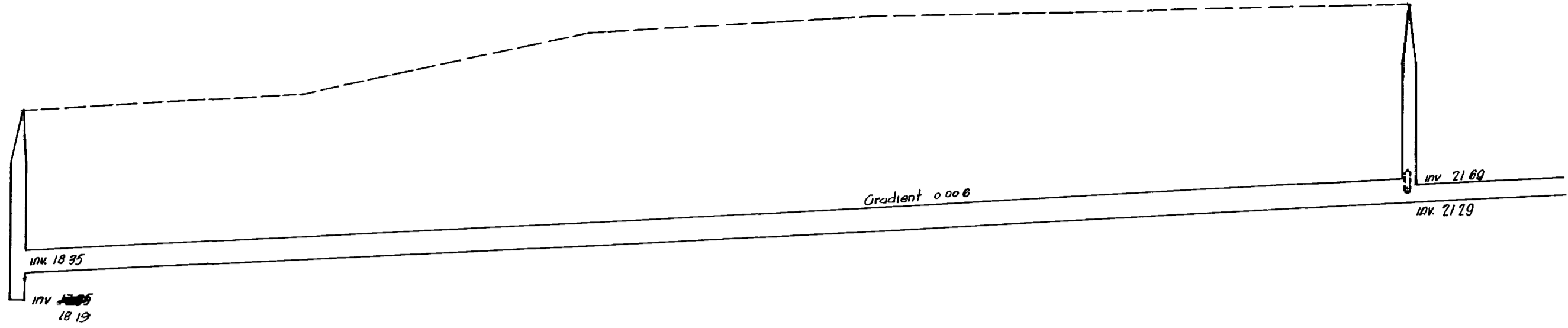


Lot 16 Capital Hill
Sub Division



COMBINED SEWER DISTRICT NO. 6

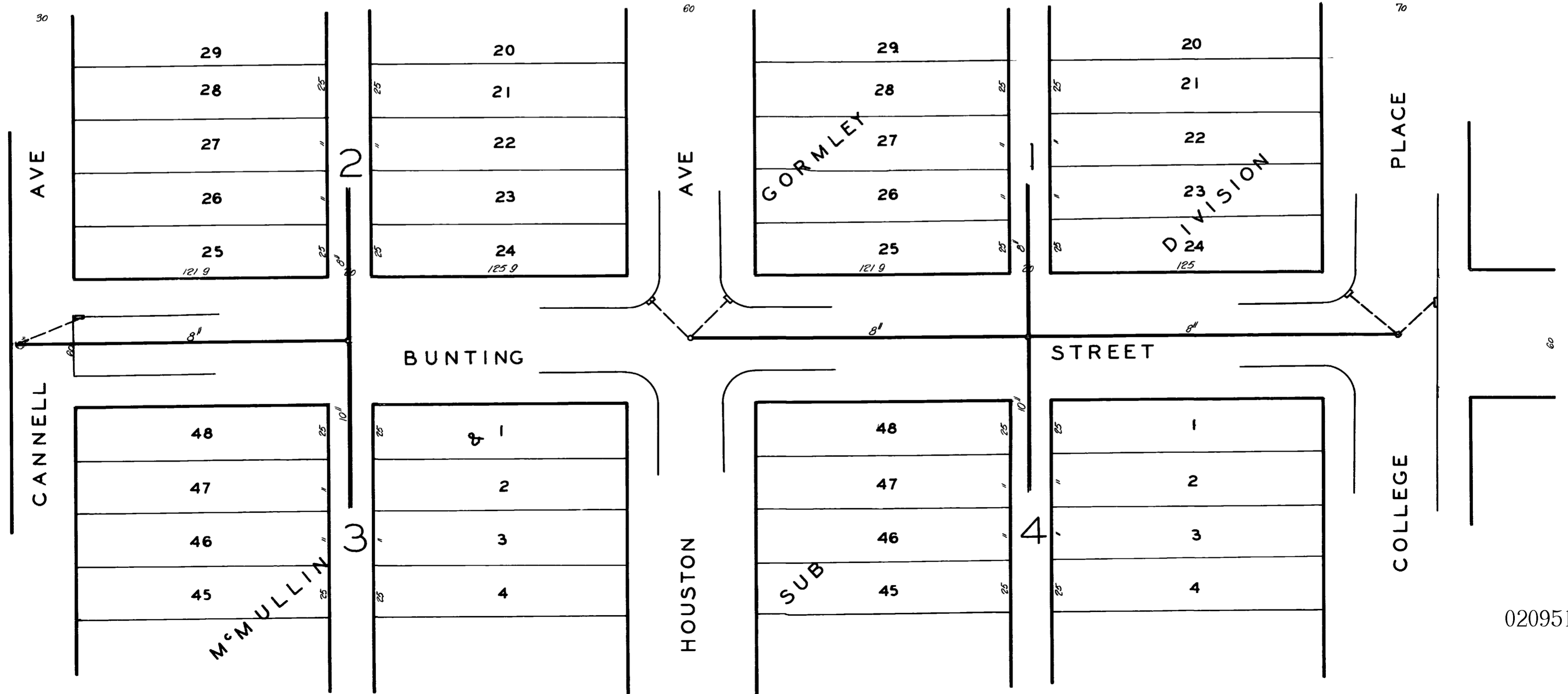
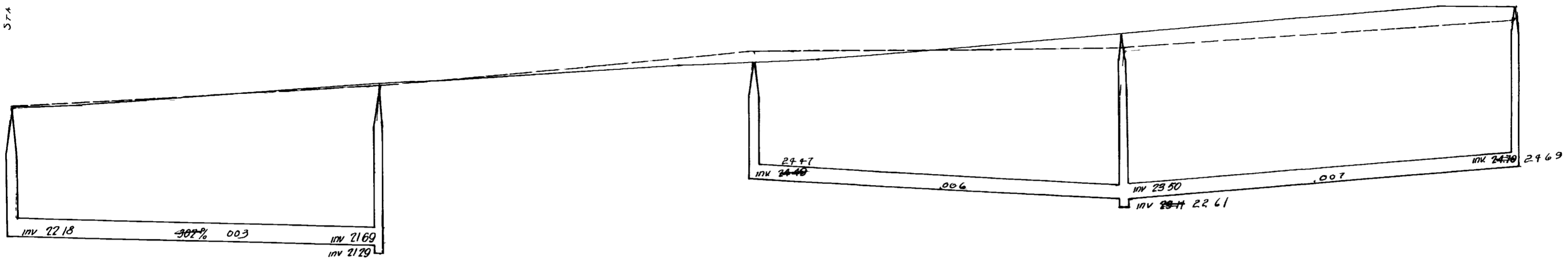


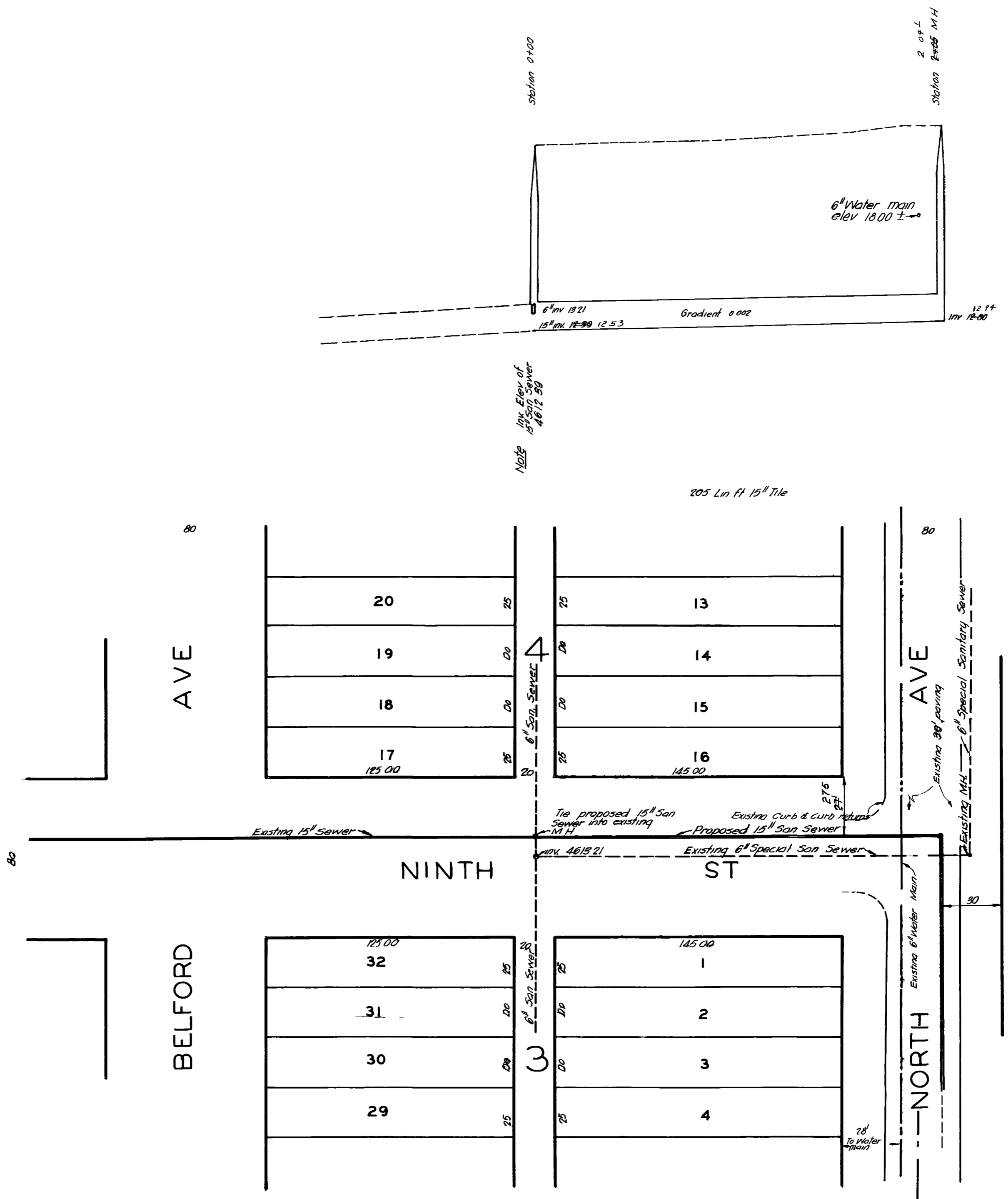


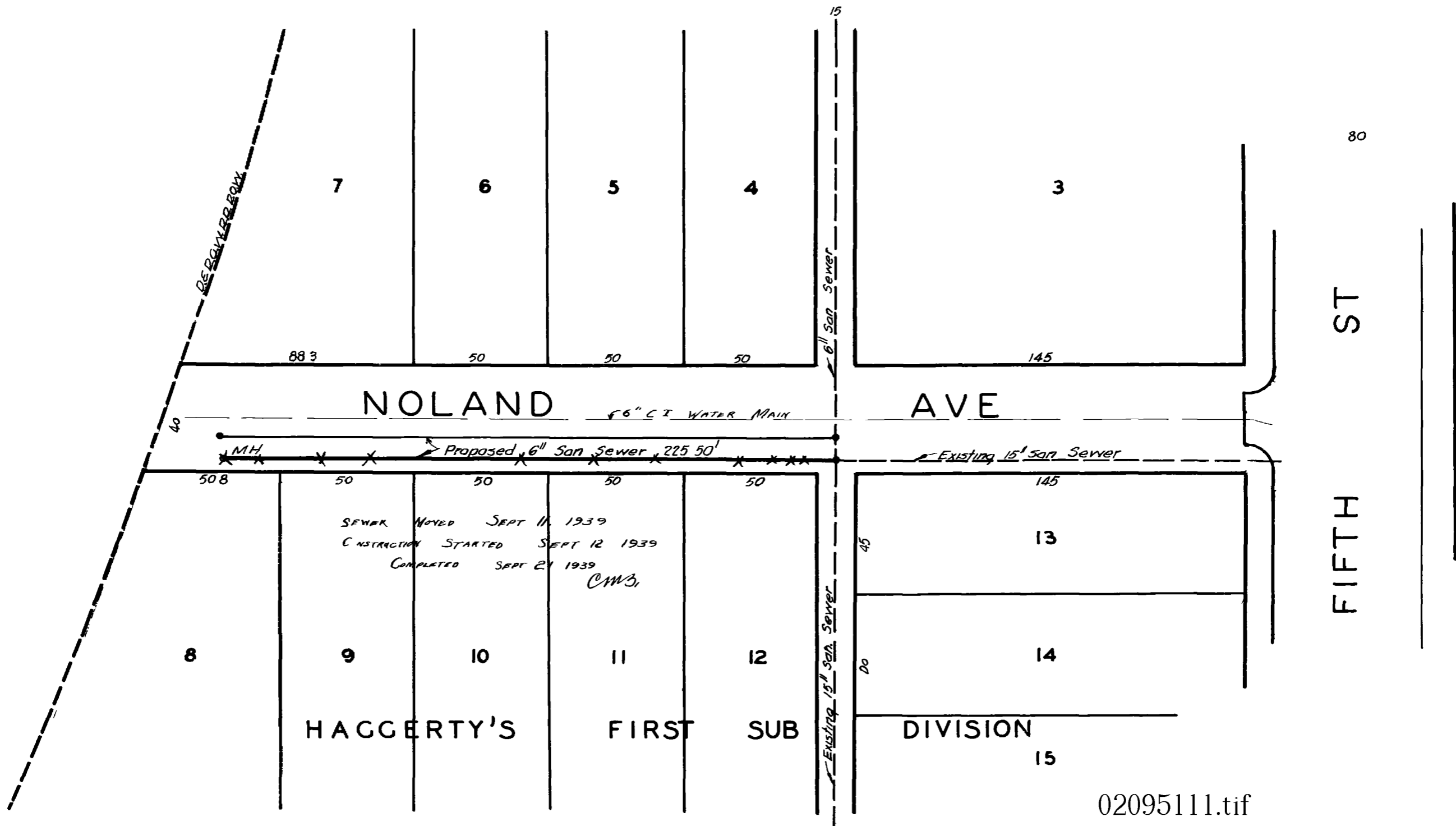
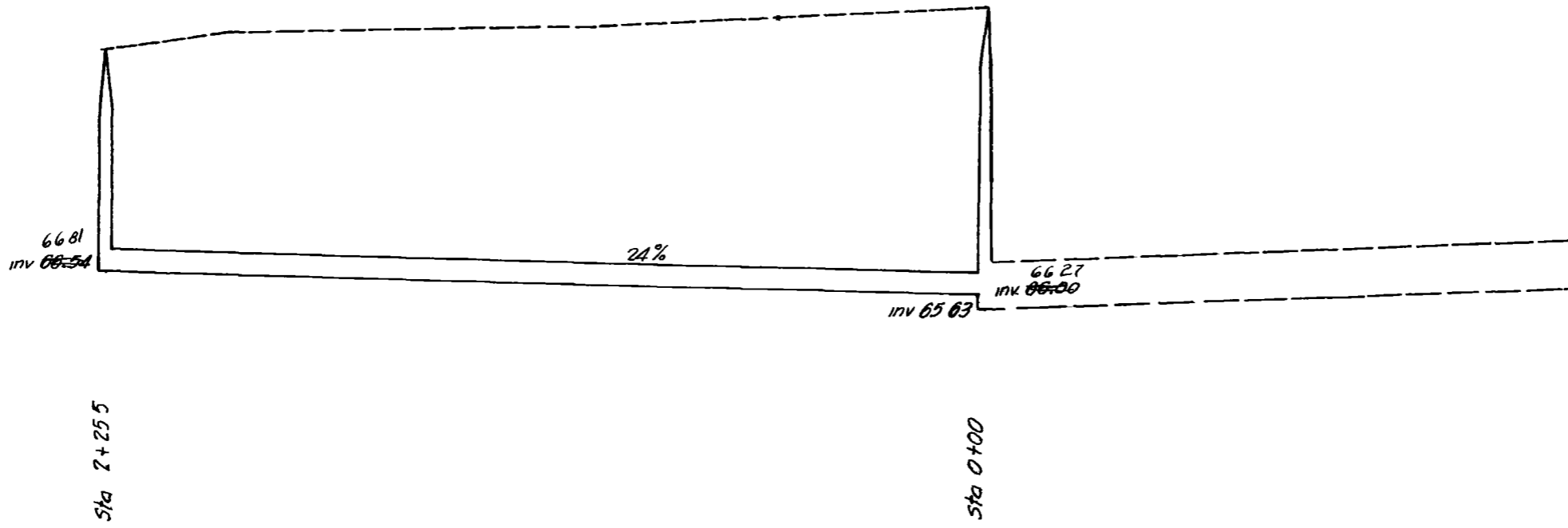
STA 1+36.2

STA 1+61.3

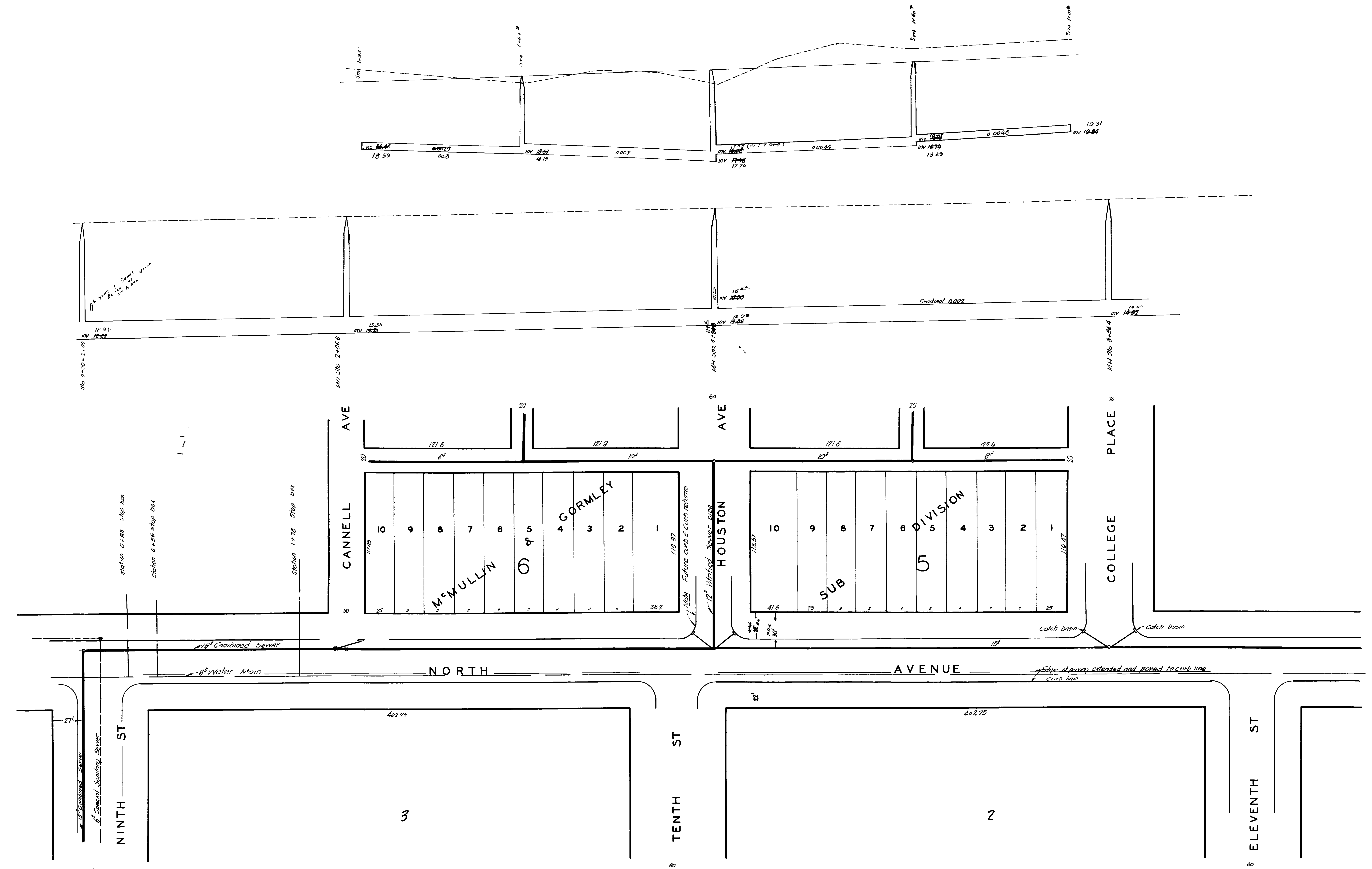
STA 1+70







02095111.tif



0.6' Slope
 1/2" Slope
 1/4" Slope
 1/8" Slope

Sta 0+00 = 2+00

MH Sta 2+06.8

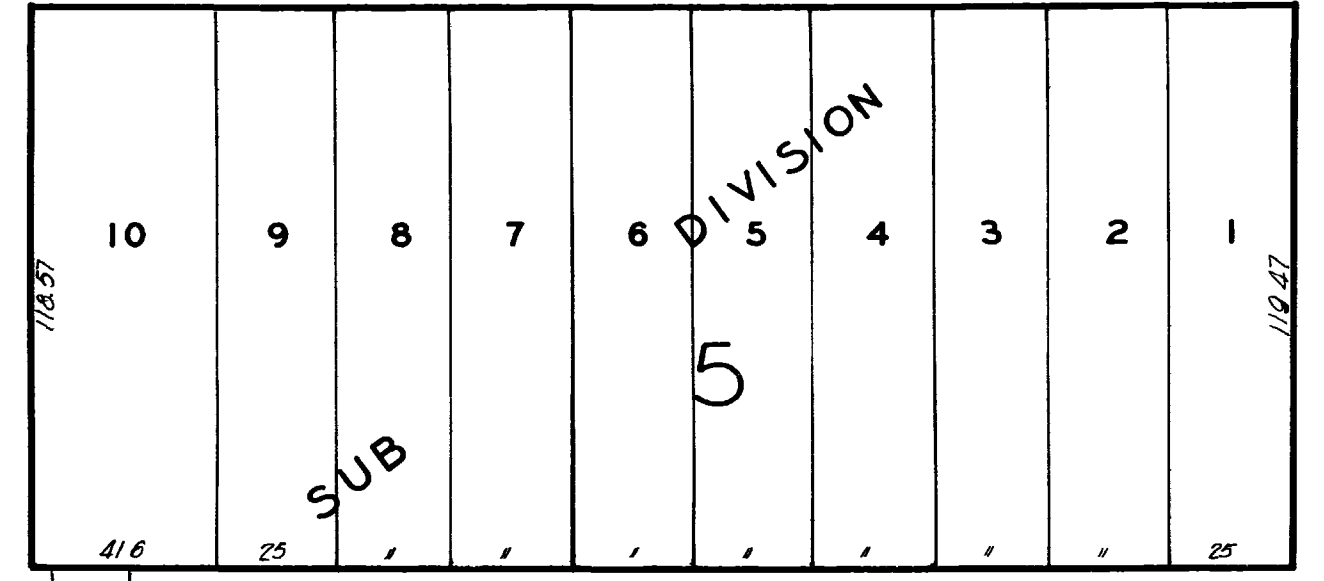
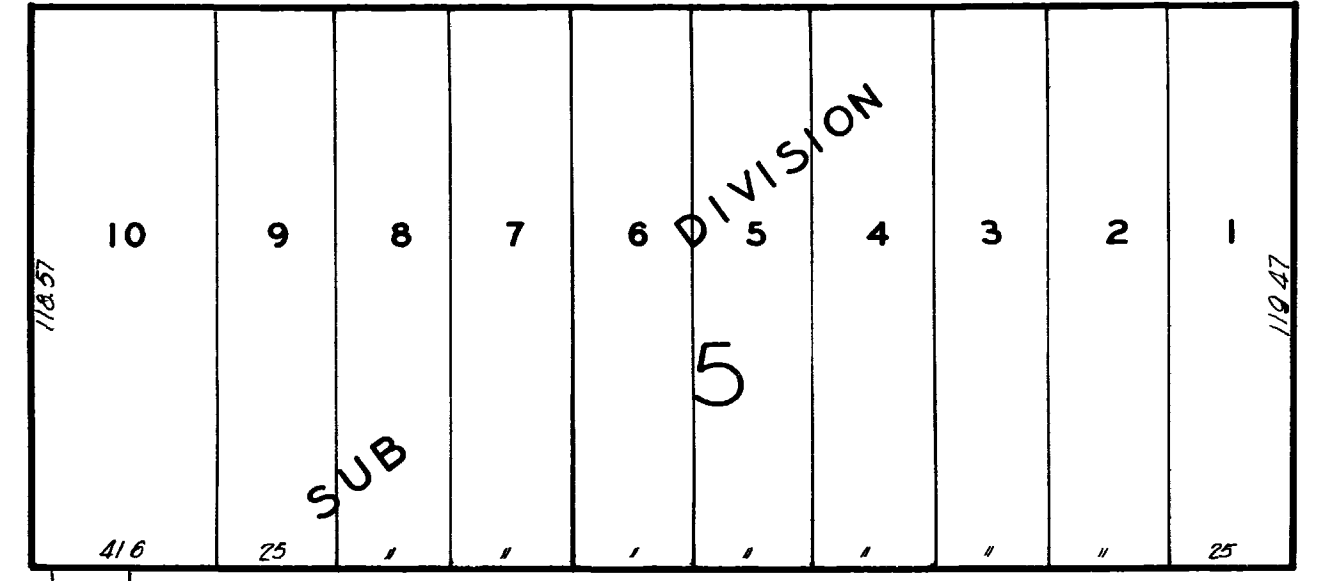
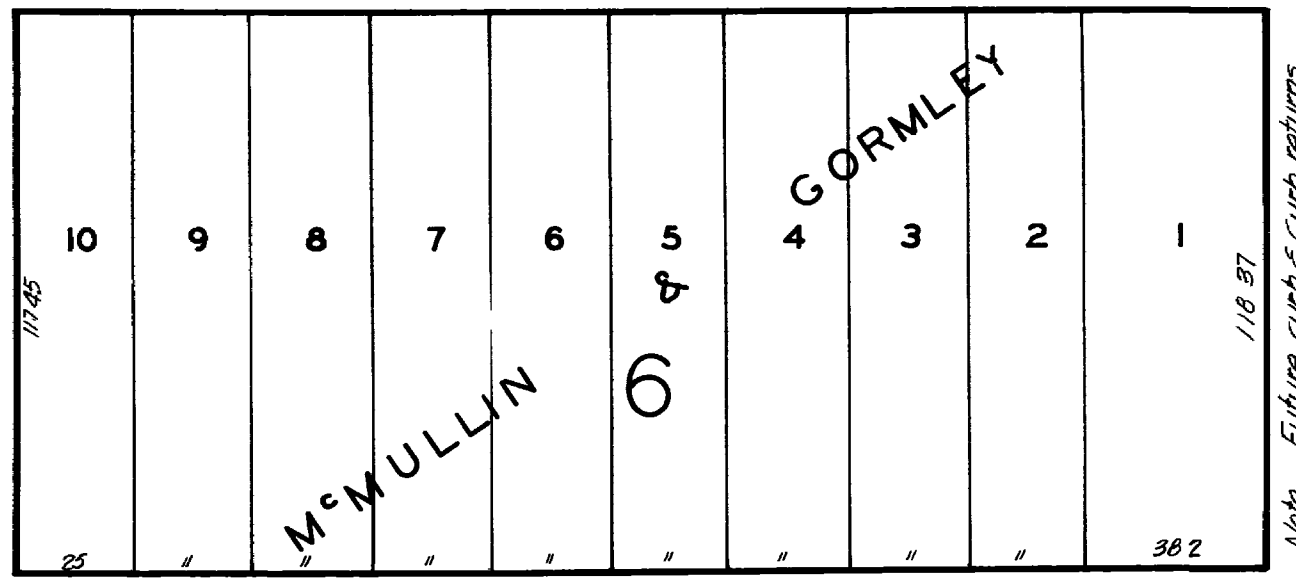
MH Sta 3+44.4

MH Sta 8+58.4

CANNELL AVE

HOUSTON AVE

COLLEGE PLACE



18" Combined Sewer

6" Water Main

NORTH AVENUE

AVENUE

Edge of paving extended and paved to curb line

NINTH ST

TENTH ST

ELEVENTH ST

3

2

