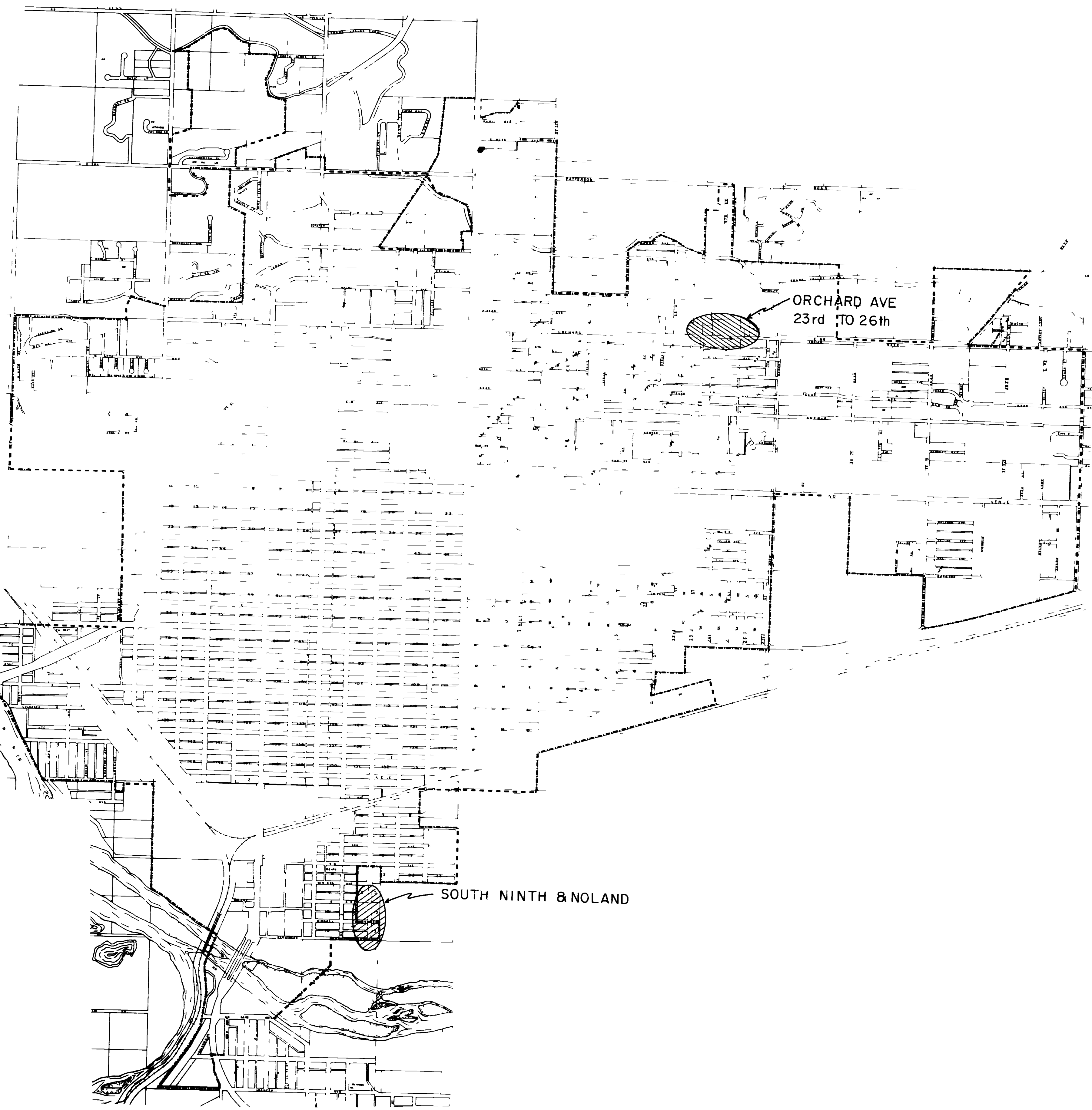


SANITARY SEWER DISTRICT 26-69



UNIT NO 1

ORCHARD AVE 23rd to 26th STREET - McCLURE PARK
 PLAN — SHEET 1 of 5
 PROFILE — SHEET 2 of 5

UNIT NO 2

SOUTH NINTH and NOLAND - BENTON CANNON'S 1st SUB AMENDED
 VICINITY MAP SHEET 3 of 5
 PLAN and PROFILE SHEET 4 of 5
 5 of 5

SANITARY SEWER DISTRICT 26-69	
DRAWING <small>EW HK</small>	_____ DIRECTOR OF UTILITIES
CKD BY	_____ CITY ENGINEER
DATE July 1969	_____
SCALE as shown	_____

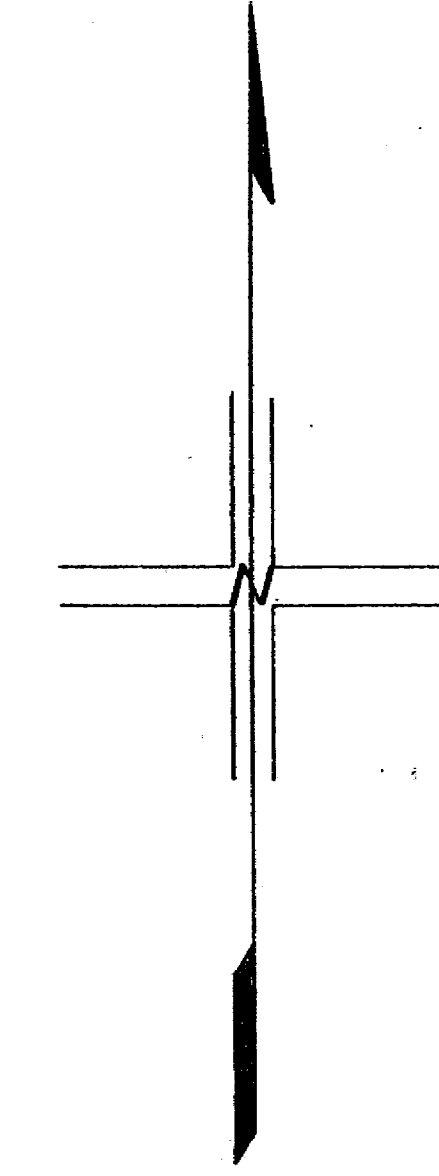
SAN. SEWER DIST. 17

18.05
17.13
692

64.50
41.50
230

18.03
17.23
1.10

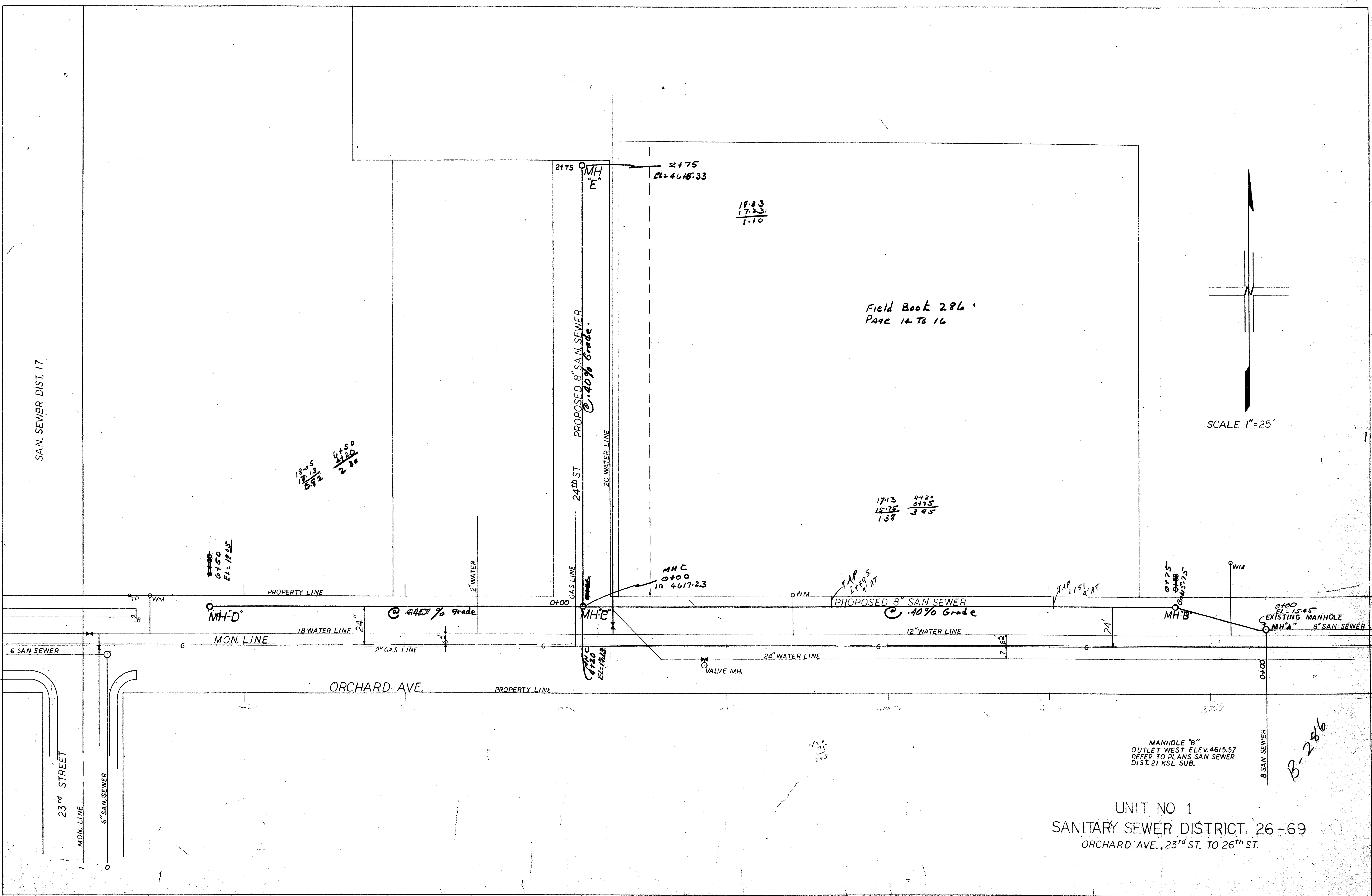
Field Book 286
Page 14 TB 16



SCALE 1"=25'

1713
1575
138

422
375

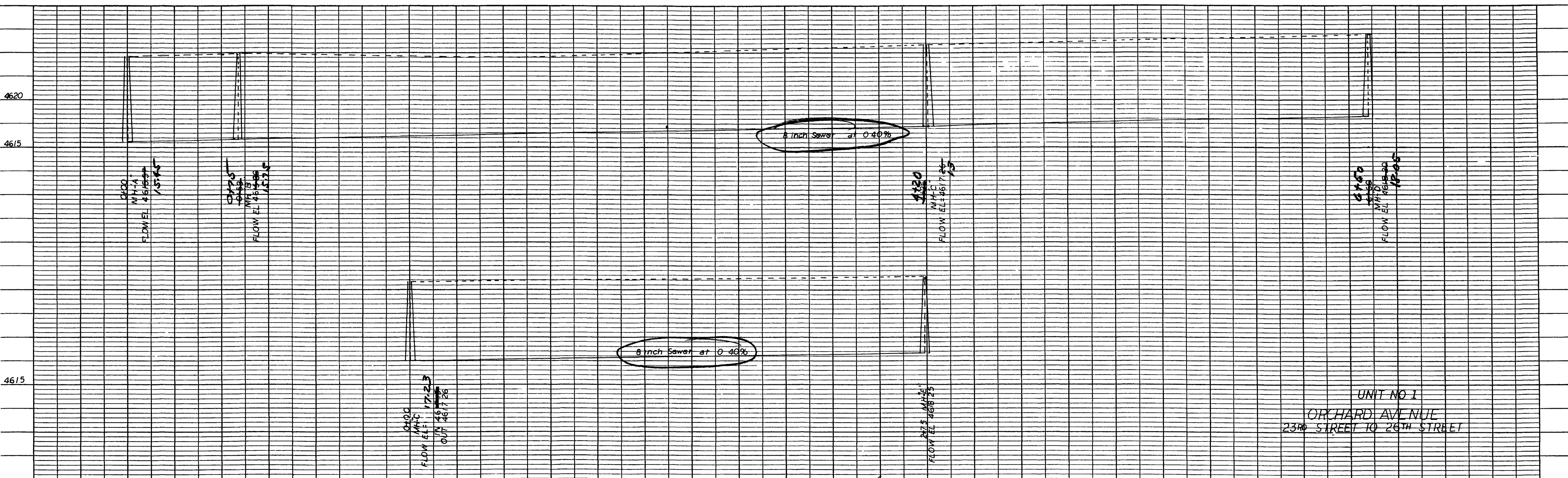


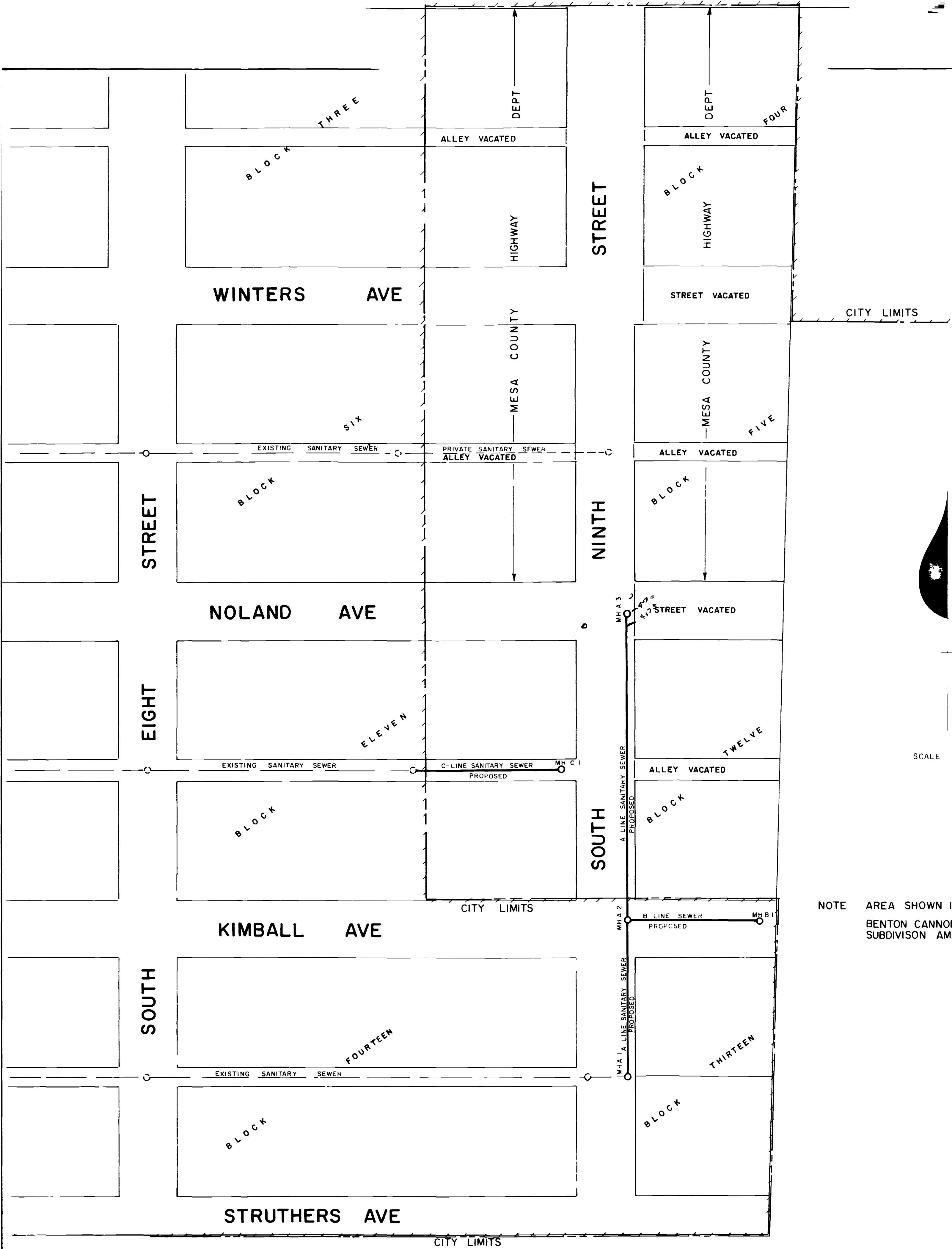
MANHOLE "B"
OUTLET WEST ELEV. 4615.57
REFER TO PLANS SAN SEWER
DIST. 21 KSL SUB.

B-286

UNIT NO 1
SANITARY SEWER DISTRICT 26-69
ORCHARD AVE., 23rd ST. TO 26th ST.

SEE SHEET 1 of 5
FOR PLAN






NOTE AREA SHOWN IS ALL IN BENTON CANNON'S FIRST SUBDIVISION AMENDED

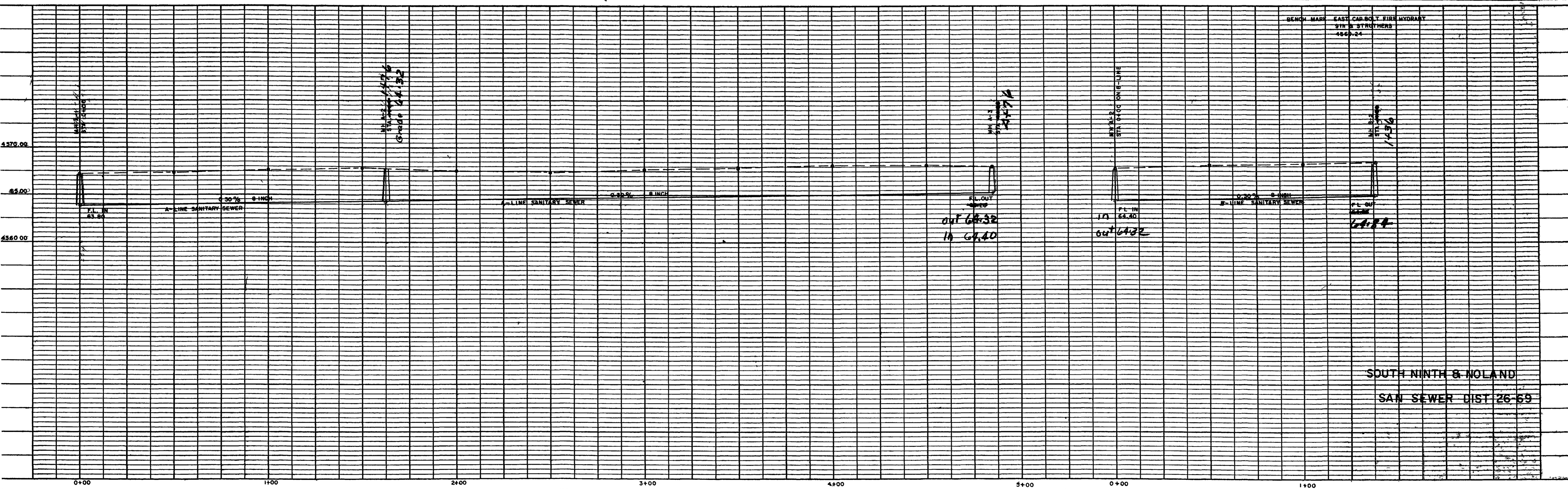
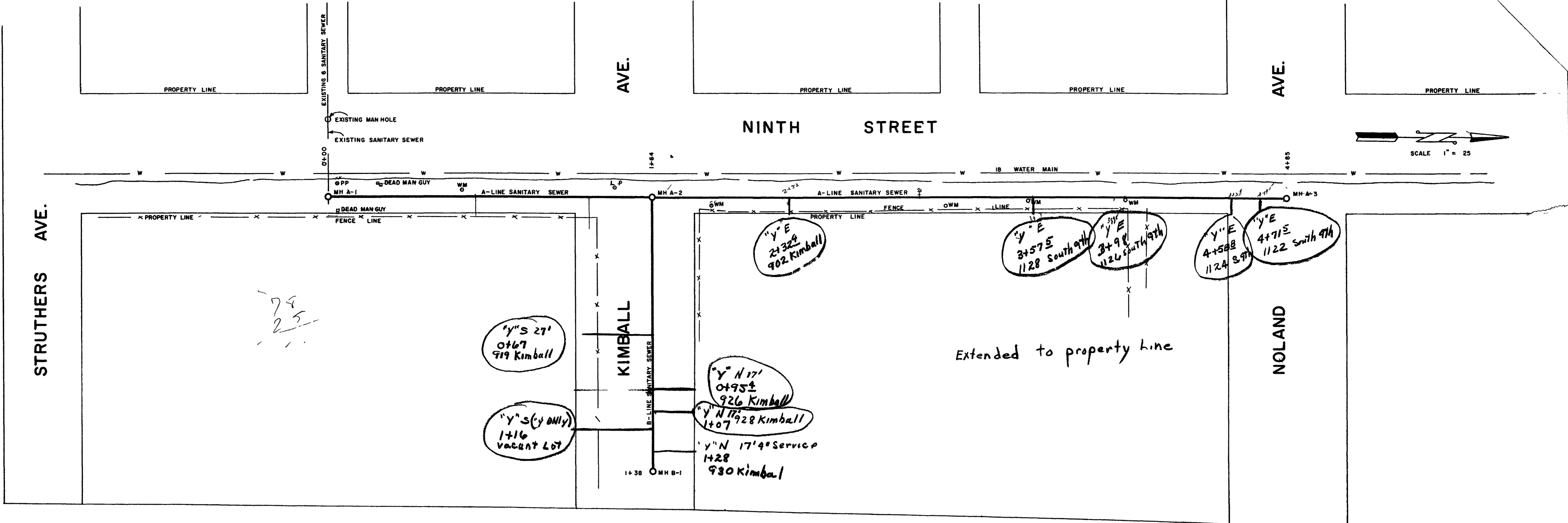
PROPOSED SANITARY SEWER

SOUTH NINTH & NOLAND AREA

1969

CITY OF GRAND JUNCTION COLORADO

ENGINEERING DEPARTMENT CITY OF GRAND JUNCTION COLO UNIT NO 2 PROPOSED SANITARY SEWER SOUTH NINTH & NOLAND AREA 1969 SAN SEWER DIST 26-69	
DWG BY E WHITE	APPROVED BY
DATE DEC 1968	
FIELD BOOK 265	CITY ENGINEER
SCALE AS SHOWN	DATE Dec 6, 1968



SOUTH NINTH & NOLAND
 SAN SEWER DIST 26-69

