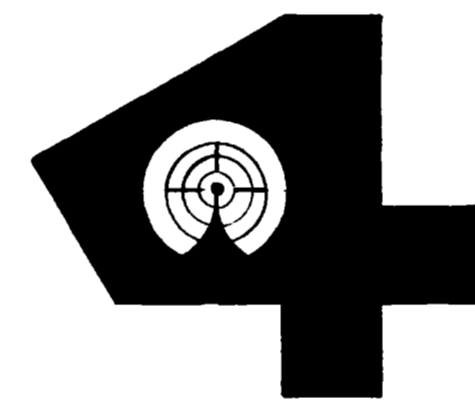


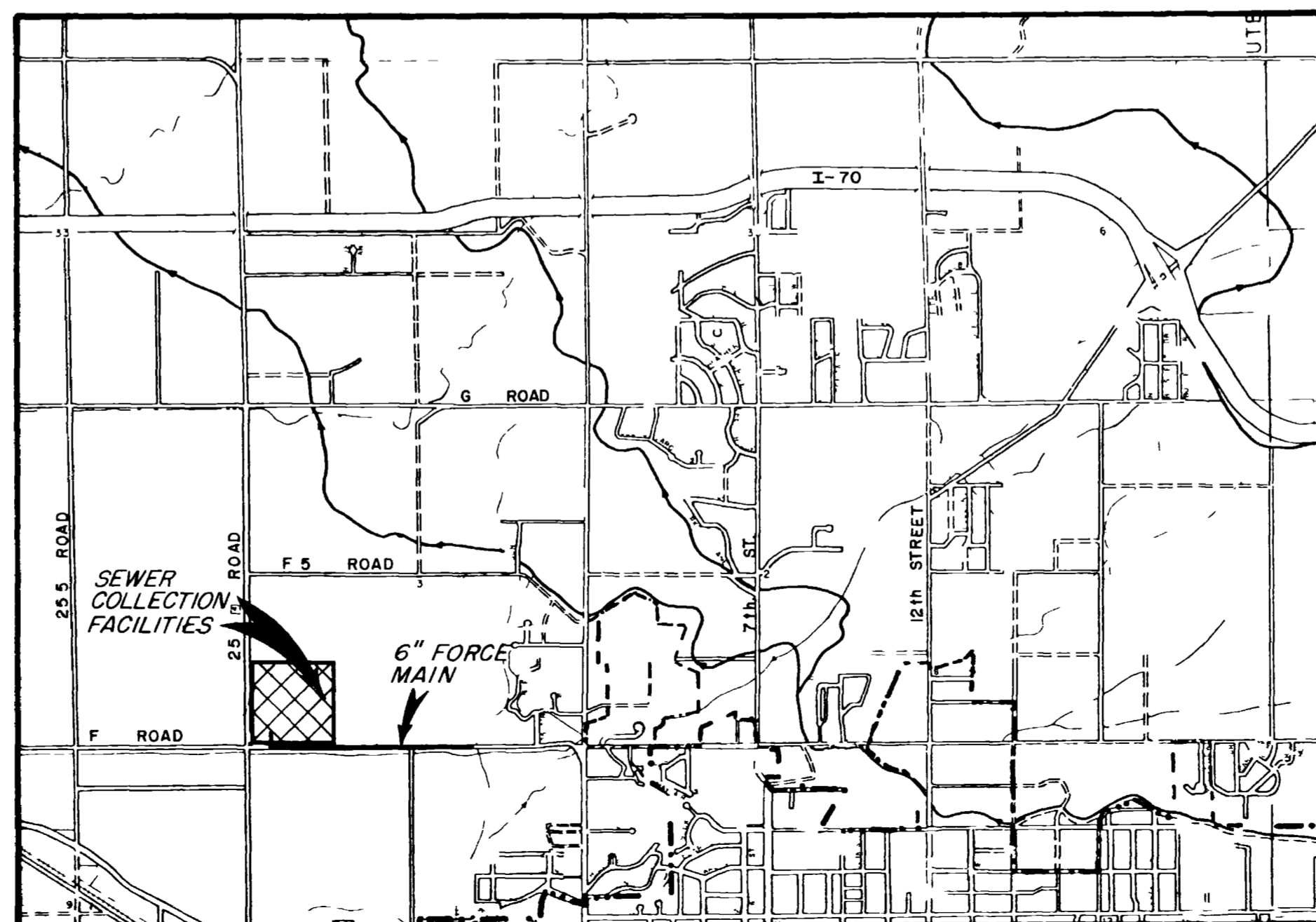
INDUSTRIAL DEVELOPMENT INC.

GRAND JUNCTION, COLORADO

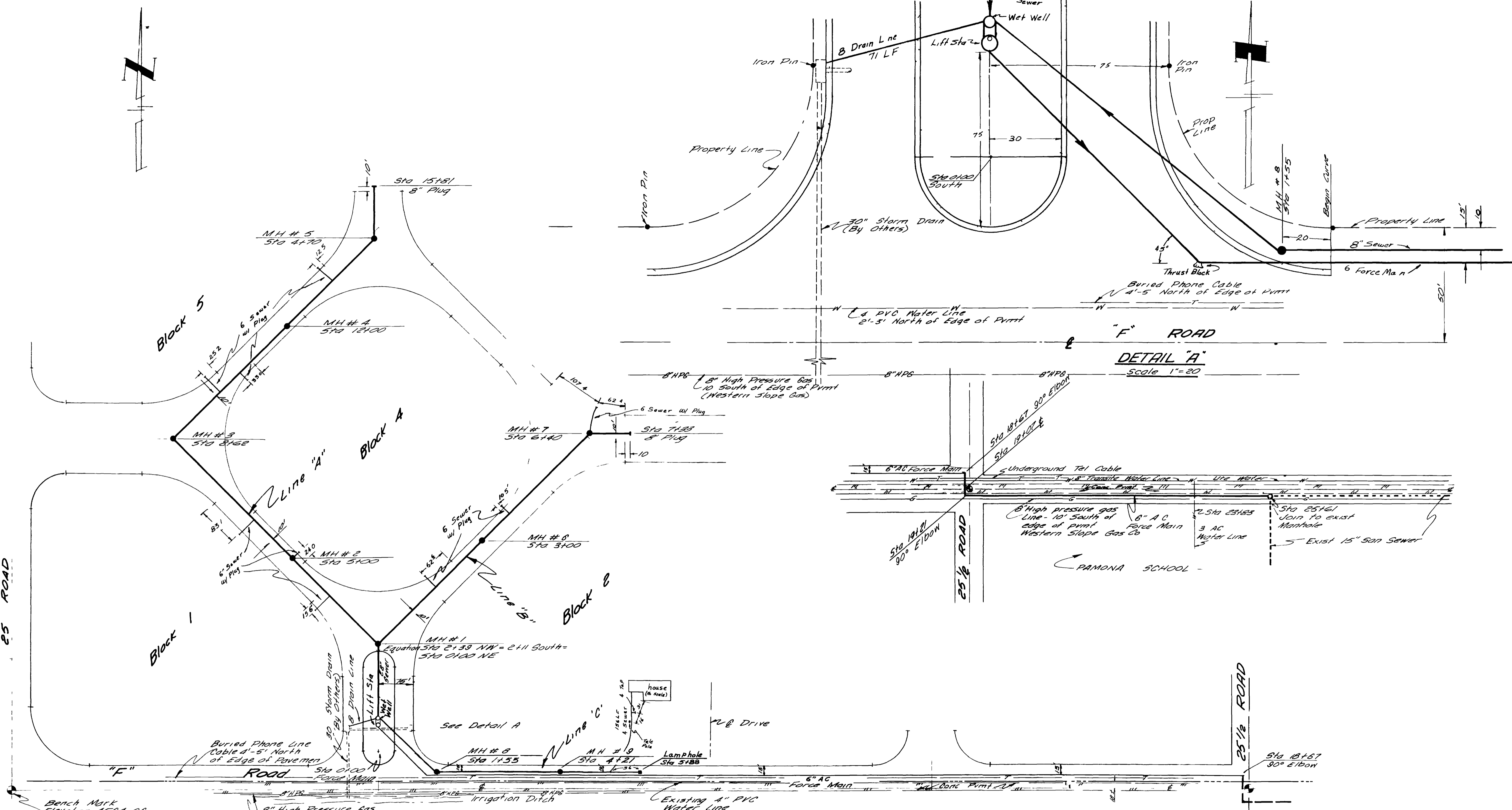
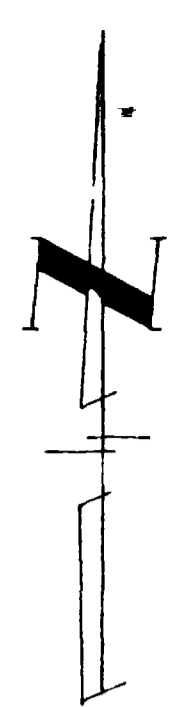
SEWERAGE COLLECTION FACILITIES *for* *FORESIGHT PARK*



AUGUST, 1971



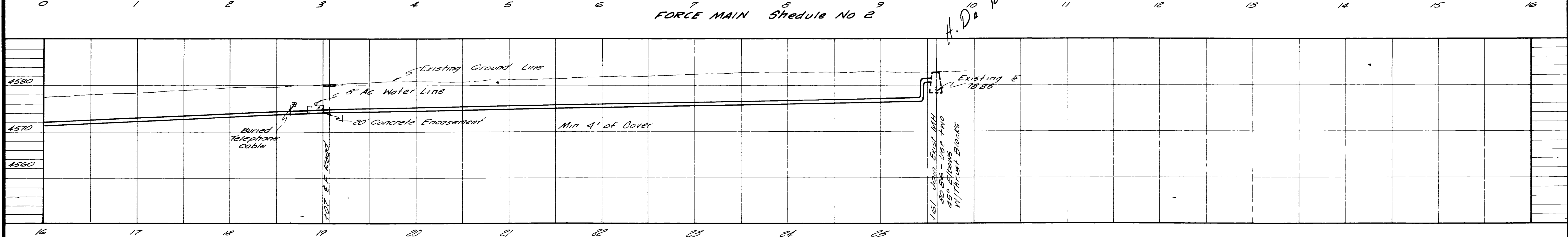
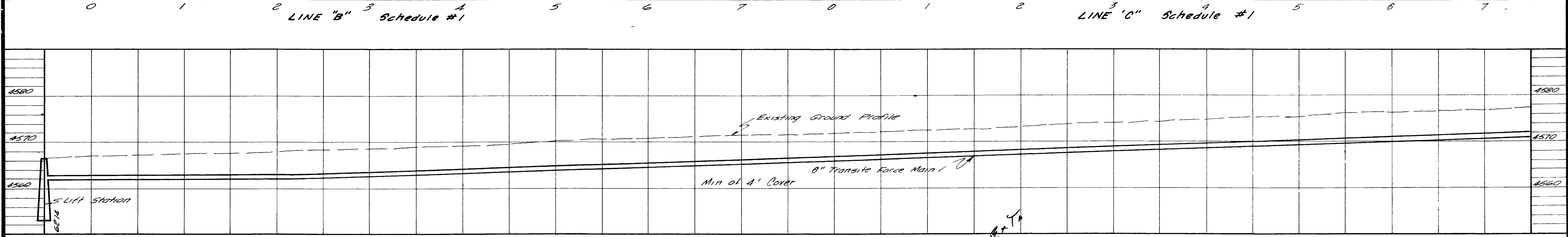
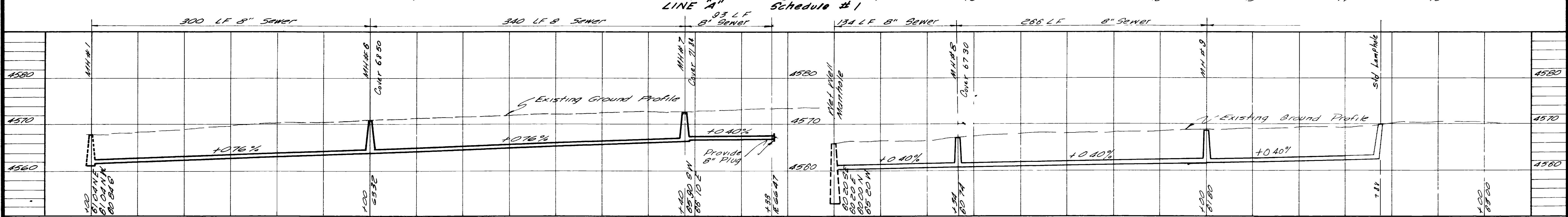
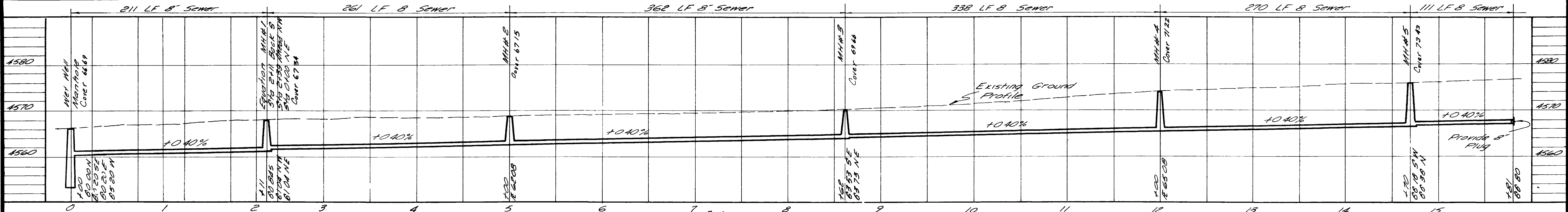
LOCATION MAP

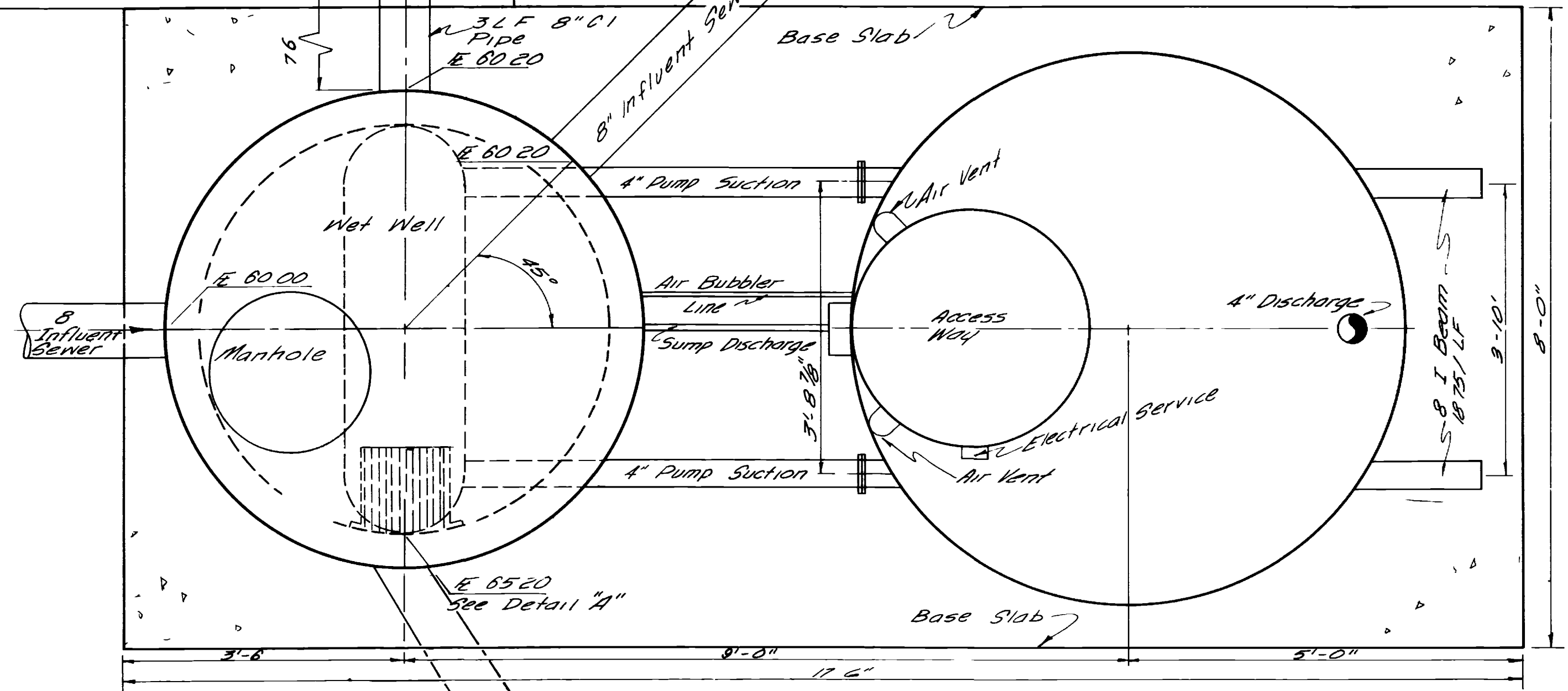
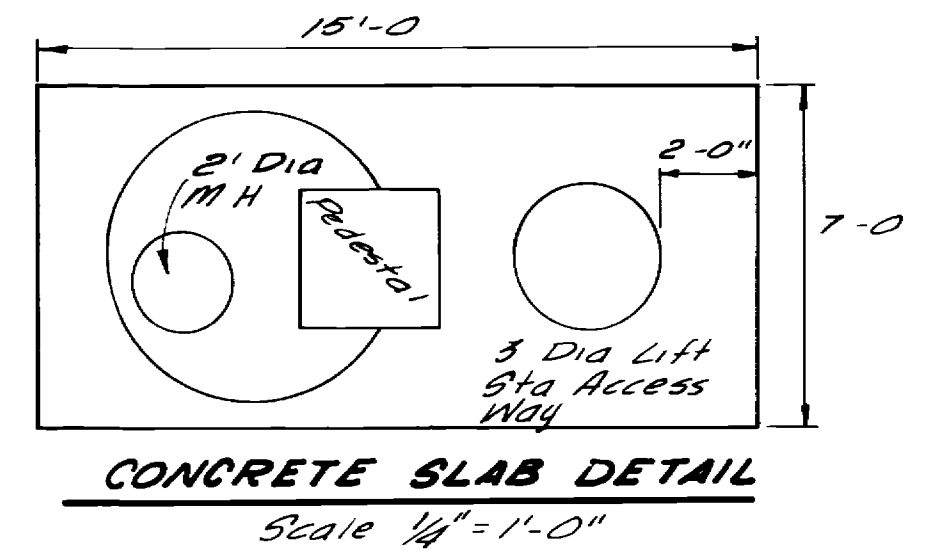
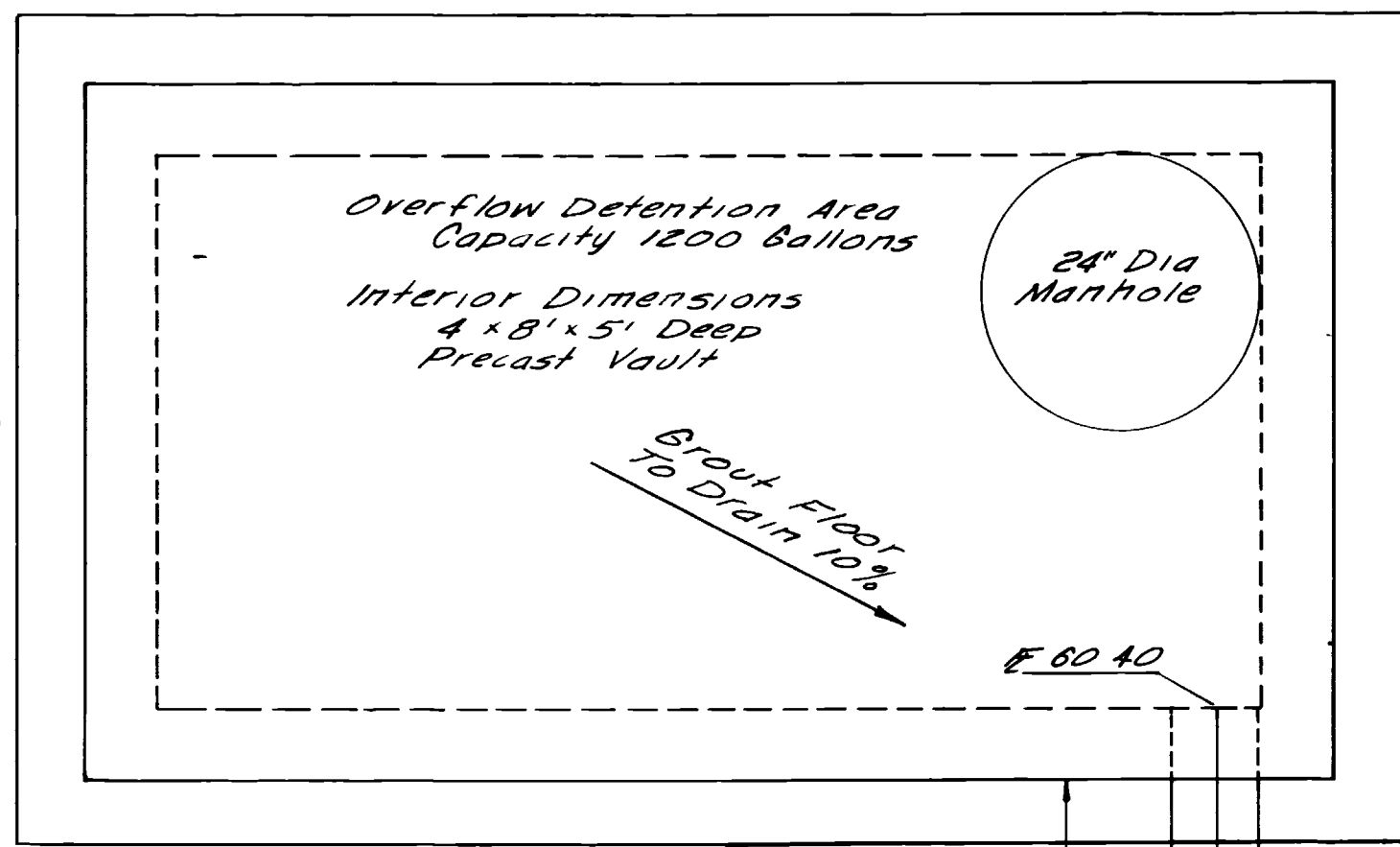


- NOTES**
- 1 All interior sewer lines will be 10' off centerline of streets unless otherwise noted
 - 2 Manhole rim elevations to be set in the field by Resident Engineer
 - 3 All 6" Sewer taps terminate essentially on the Property line

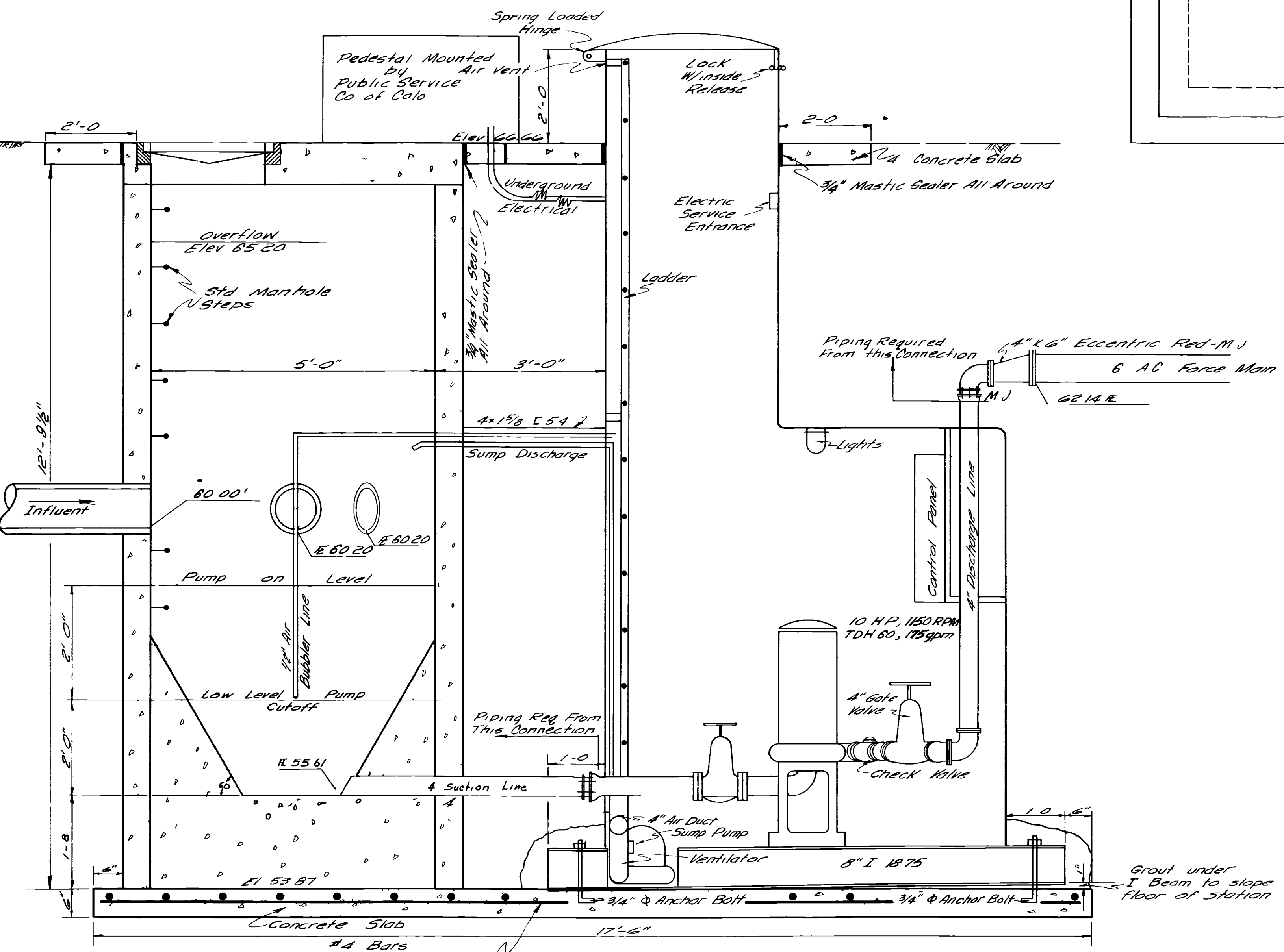
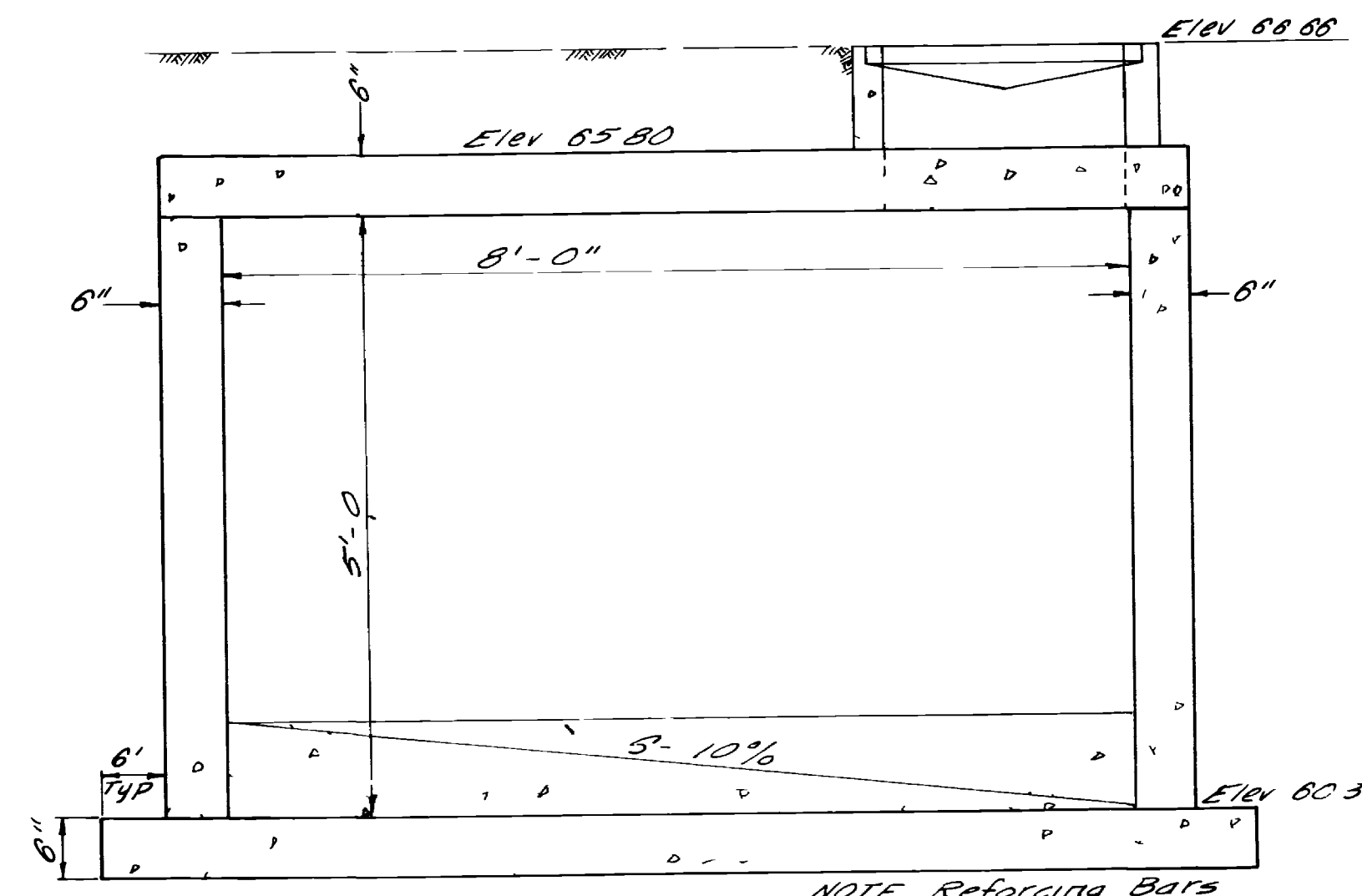
BY L.C.G. DATE Nov 17, 1970	REVISIONS As-Built	DATE April 1970	DRAWN J.P.	PROJECT NO. 69 2 617 0178	NELSON - HALEY - PATTERSON AND QUIRK ENGINEERING CONSULTANTS GREELEY - Grand Junction	FORESIGHT PARK FOR INDUSTRY FILING NO 1	SANITARY SEWER PLAN SHEET	3 SHEETS 1
-----------------------------	-----------------------	-----------------	------------	---------------------------	---------------------------------------------------------------------------------------------	--------------------------------------------	------------------------------	---------------

02095702.tif



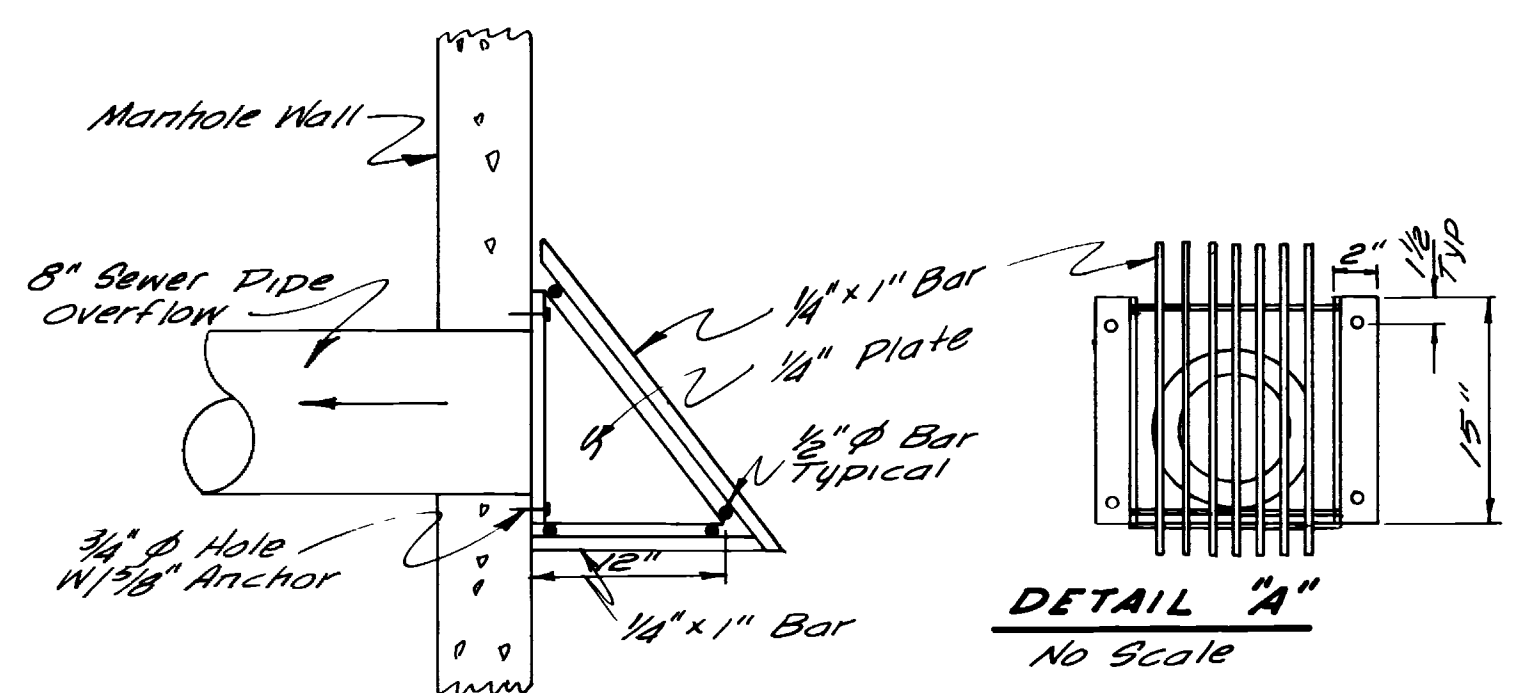


PLAN
Scale 3/4" = 1'
8" overflow to storm catch bas n 71 LF see detail A sheet 1

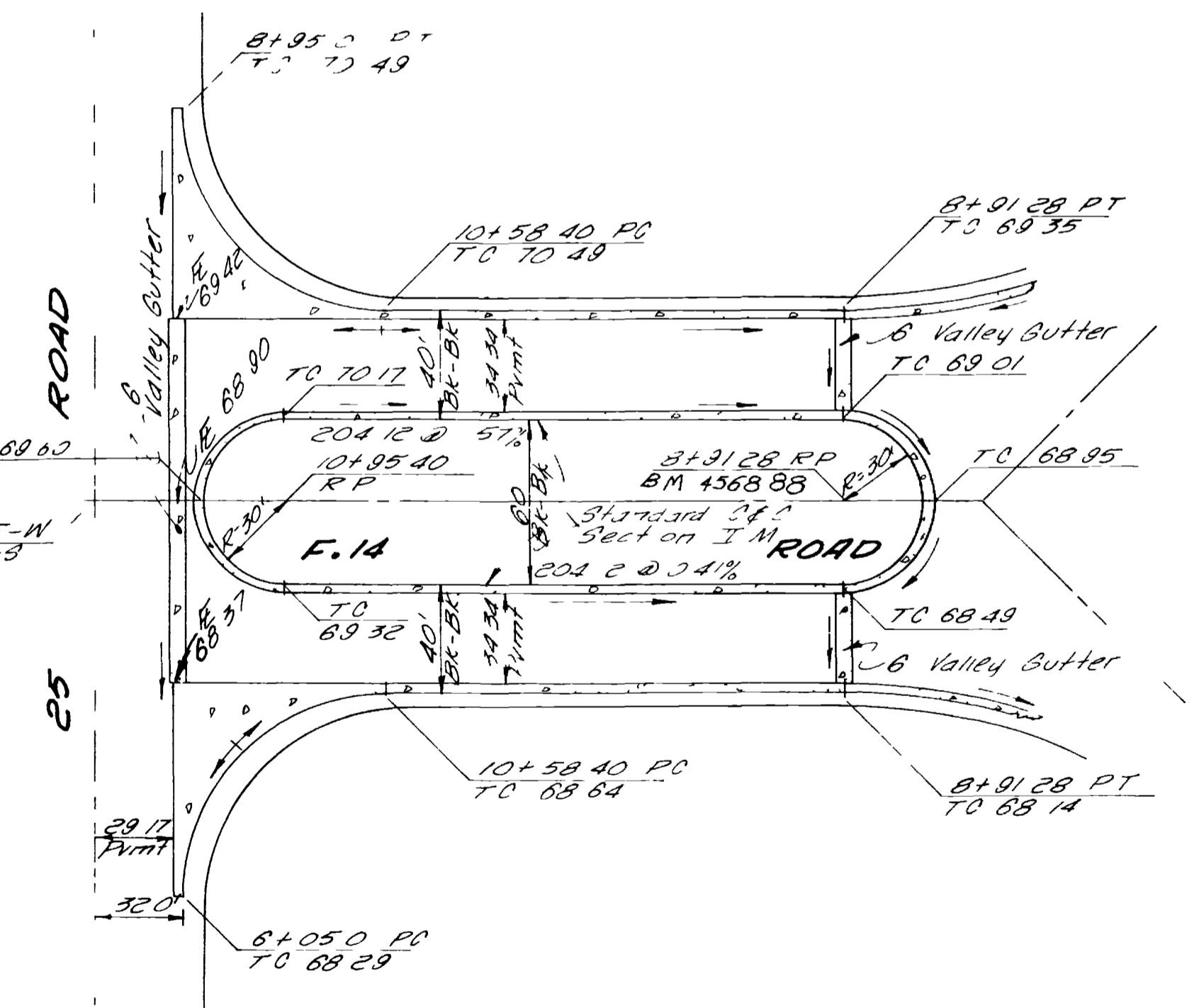
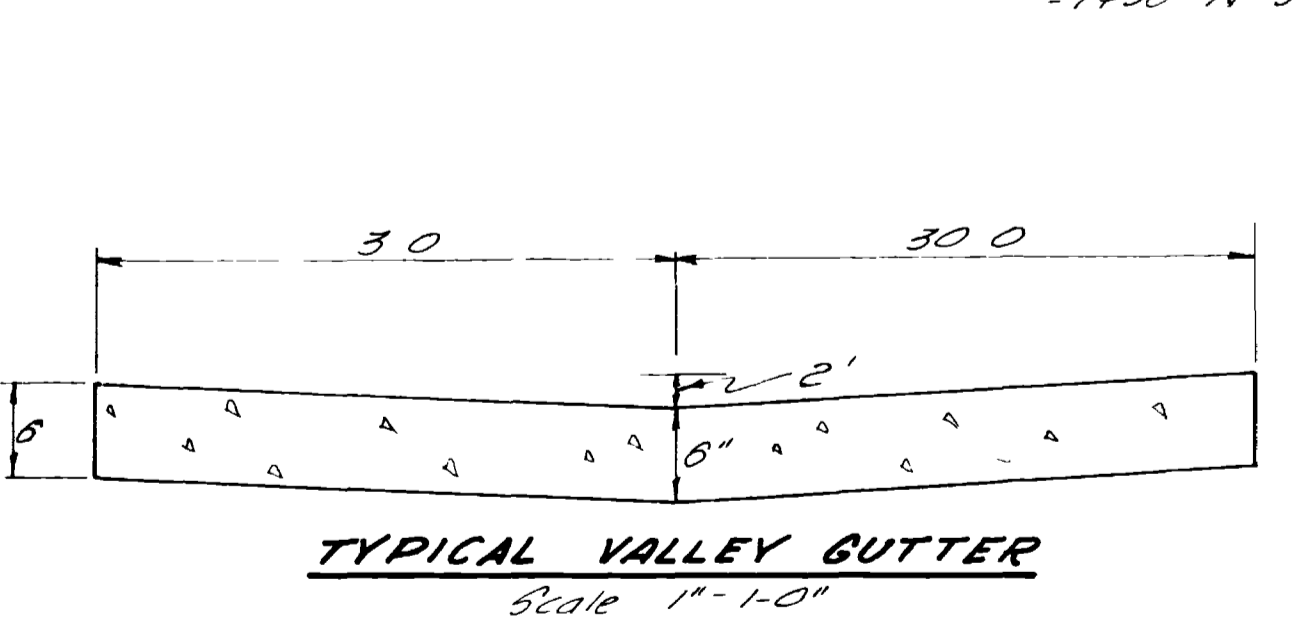
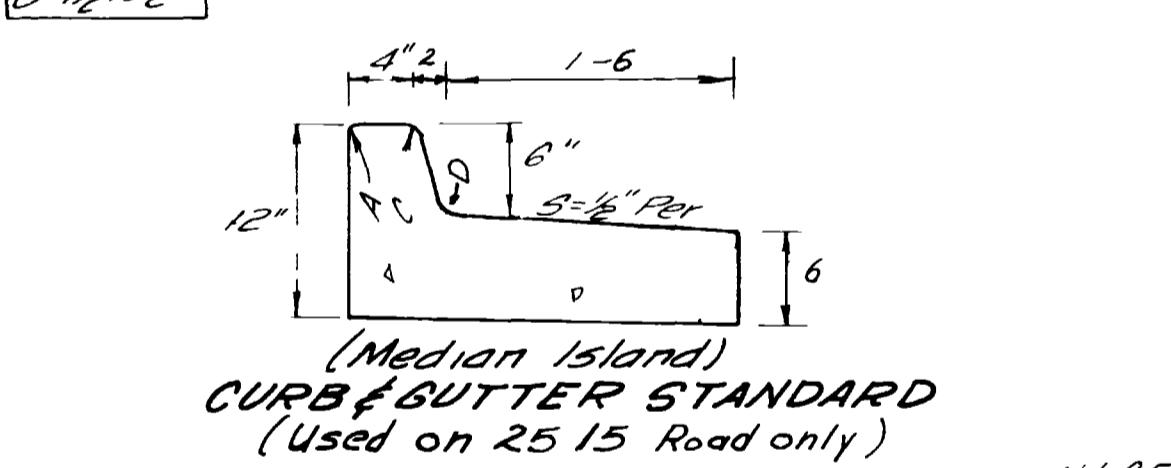
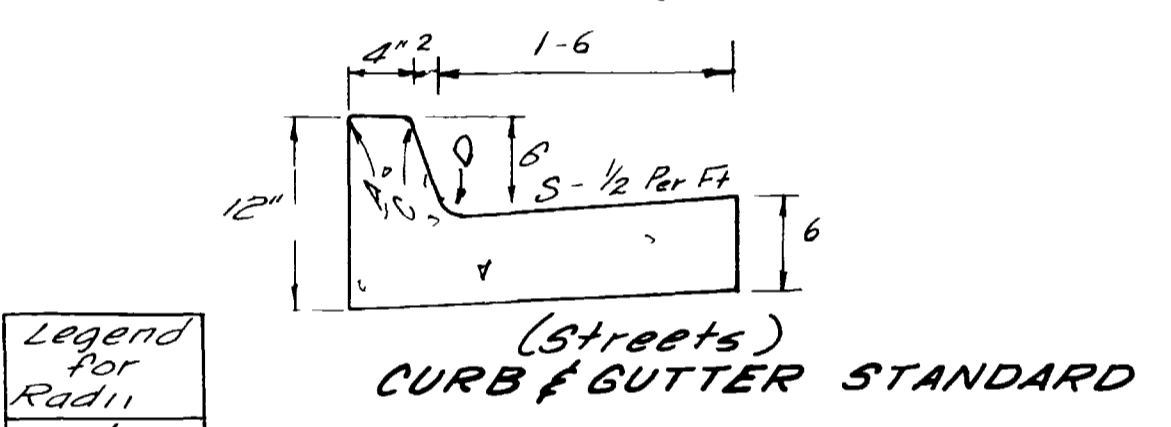
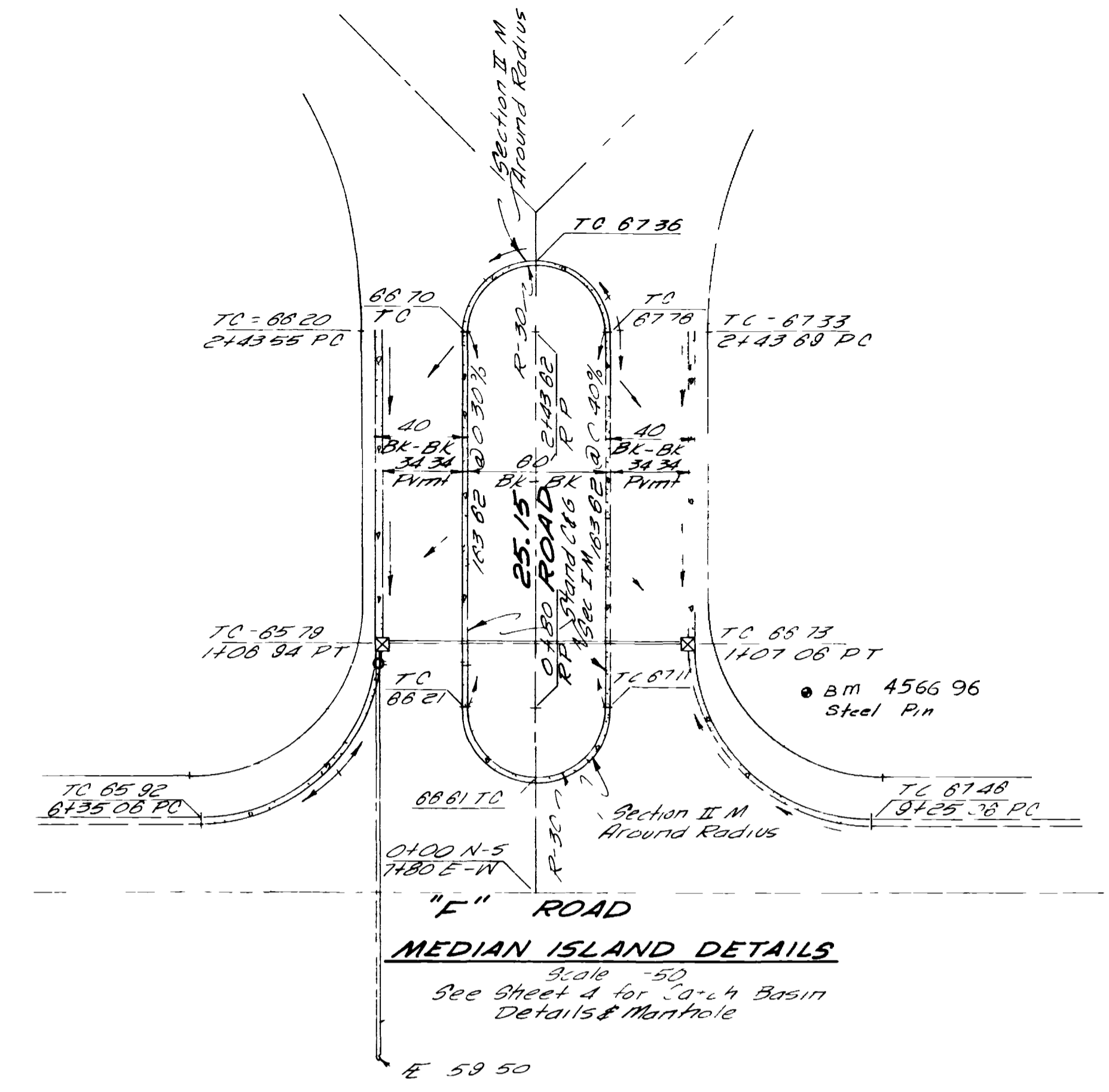
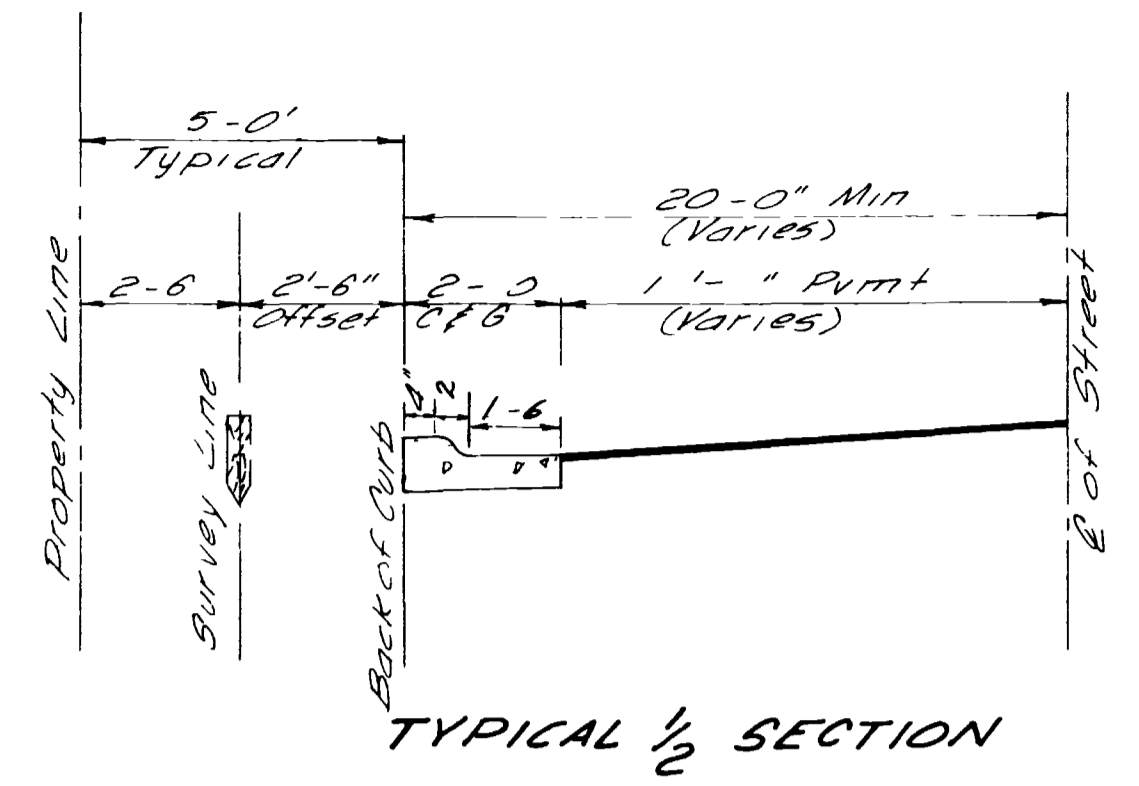
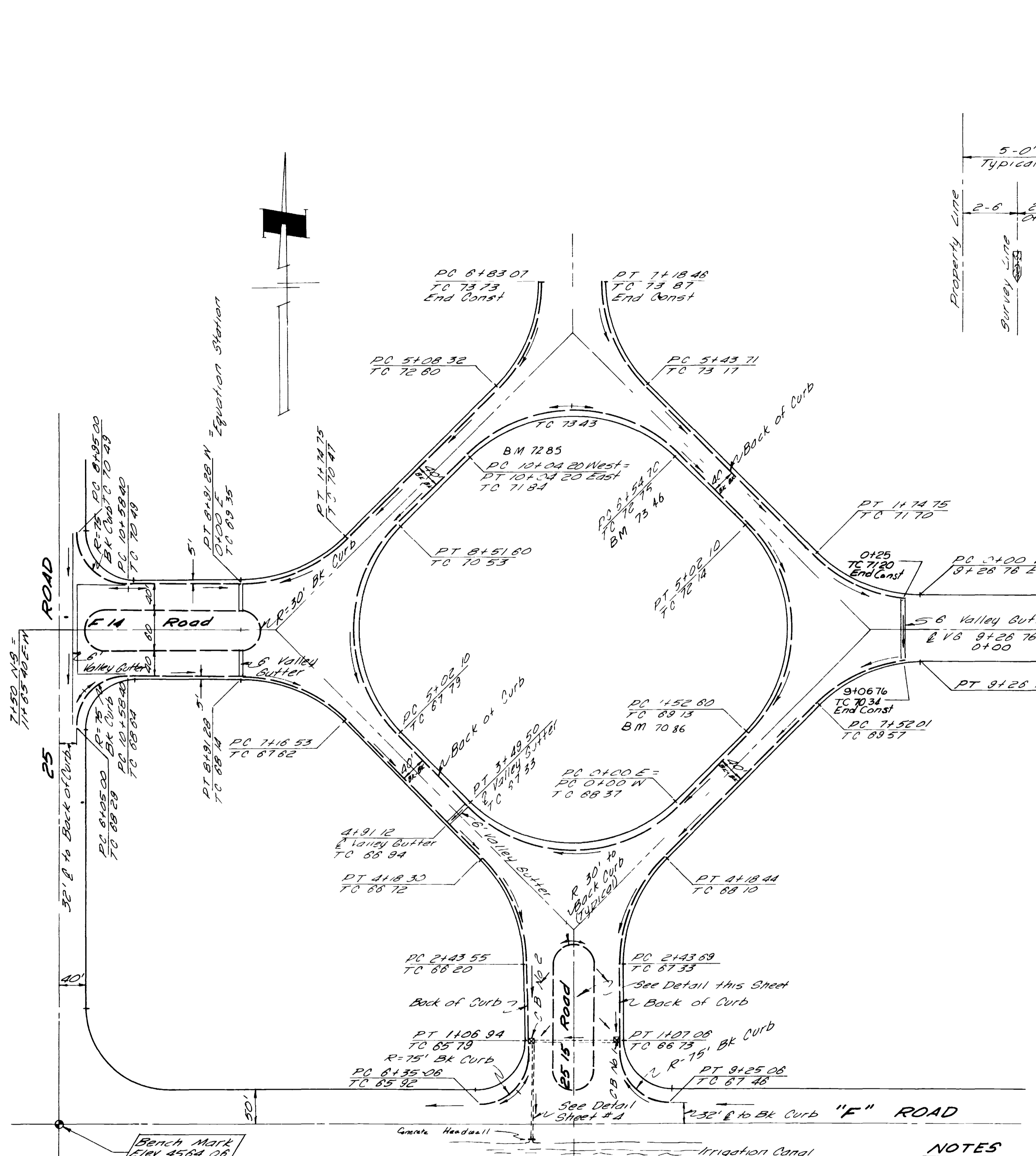


SECTION
Scale 3/4" = 1'

NOTE Underground Electrical Service shall be provided from a pedestal furnished by Public Service Co. to the lift station service connection

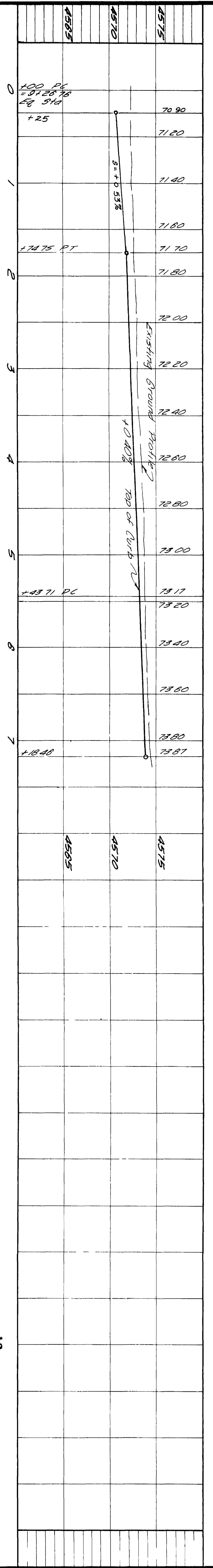
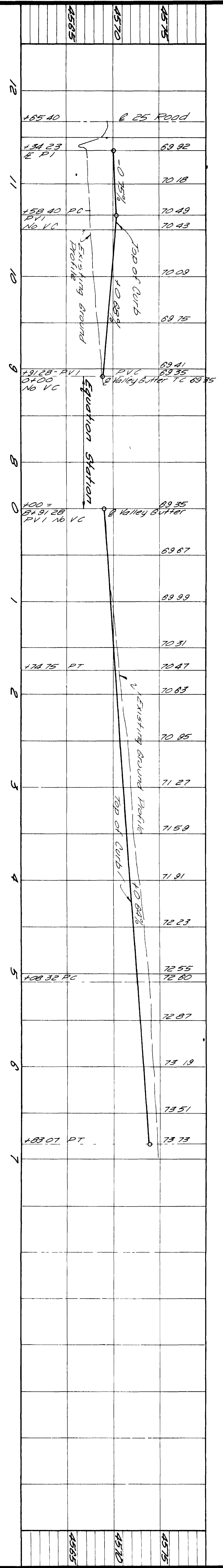
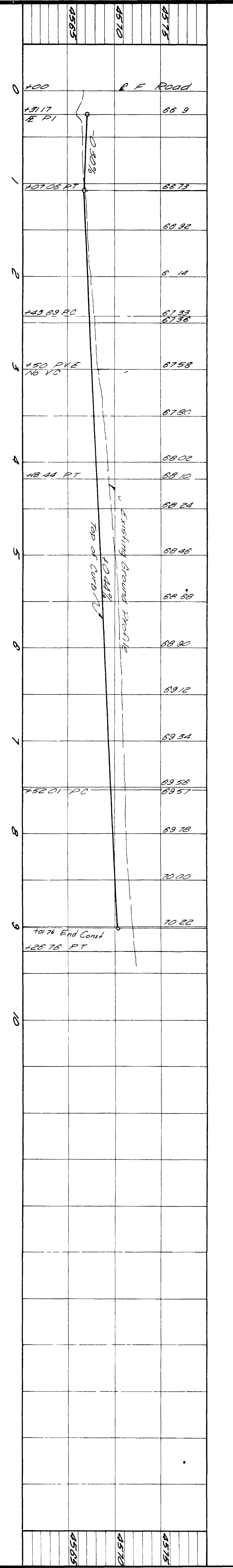
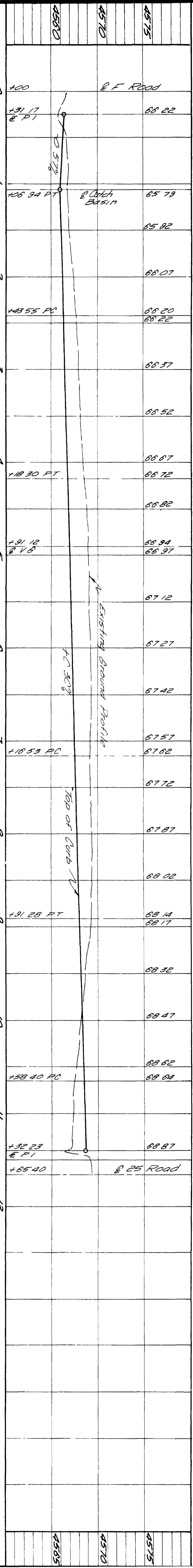


REVISIONS BY DATE DESCR BY DATE DESCR BY DATE DESCR	DATE <i>May 1988</i> SCALE 3/4" = 1'-0"	DRAWN <i>ES</i> CHECKED <i>RFB</i> APPROVED <i>EEB</i>	PROJECT NO <i>89 E OUT 0138</i>	NELSON - HALEY - PATTERSON AND QUIRK ENGINEERING CONSULTANTS GREELEY & GRAND JUNCTION COLORADO	FORESIGHT PARK FOR INDUSTRY FILING NO 1	SANITARY SEWER LIFT STATION DETAIL	3 SHEETS SHEETS 3
--------------------------------------------------------------	--------------------------------------------	--------------------------------------------------------------	------------------------------------	------------------------------------------------------------------------------------------------------	--------------------------------------------	---------------------------------------	----------------------



- NOTES**
- 1 All Stations Shown are to Survey Lines (2'-6" Off Back of Curb)
 - 2 All Elevations are to Top of Curb Unless Otherwise Shown
 - 3 — Indicates Direction of Flow
 - 4 Bench marks on property are on Property Pins

REVISIONS BY JCG DATE Nov 18, 1971 DESCR As-Built BY DATE DESCR BY DATE DESCR	DATE June, 1971 SCALE 1"=100'	DRAWN TAL CHECKED JTP APPROVED JTP	PROJECT NO 69 & 6UT 0138	NELSON - HALEY - PATTERSON AND QUIRK ENGINEERING CONSULTANTS GREELEY Grand Junction COLORADO	FORESITE PARK FOR INDUSTRY Filing No 1	CURB AND BUTTER PLAN SHEET 4 SHEETS 1
----------------------------------------------------------------------------------------	----------------------------------	------------------------------------------	-----------------------------	----------------------------------------------------------------------------------------------------	-------------------------------------------	---------------------------------------------



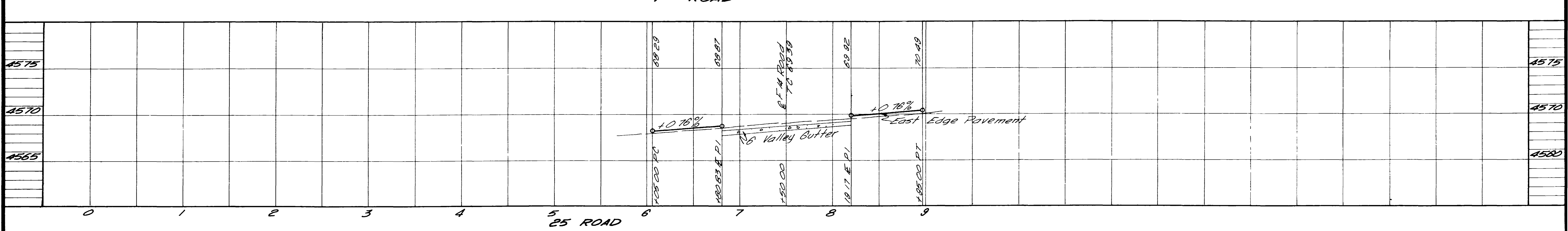
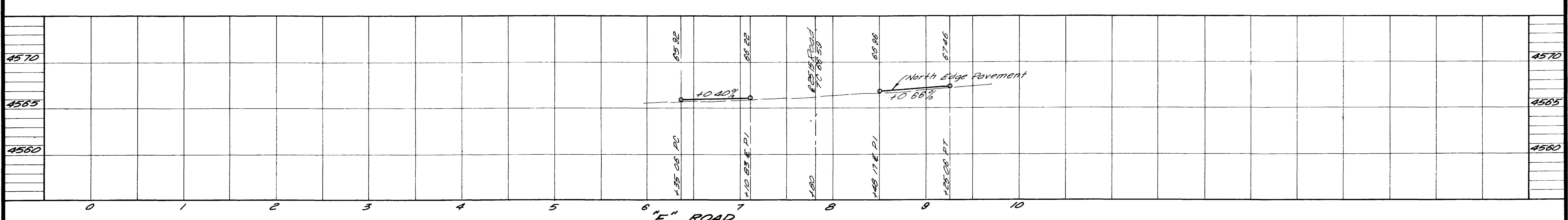
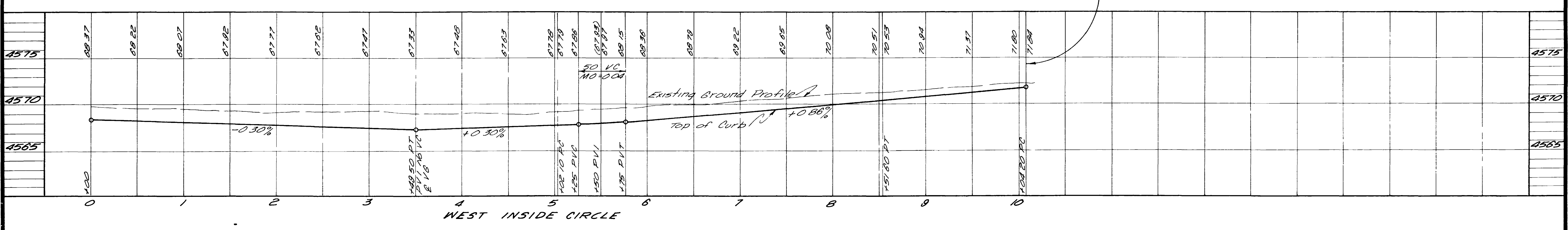
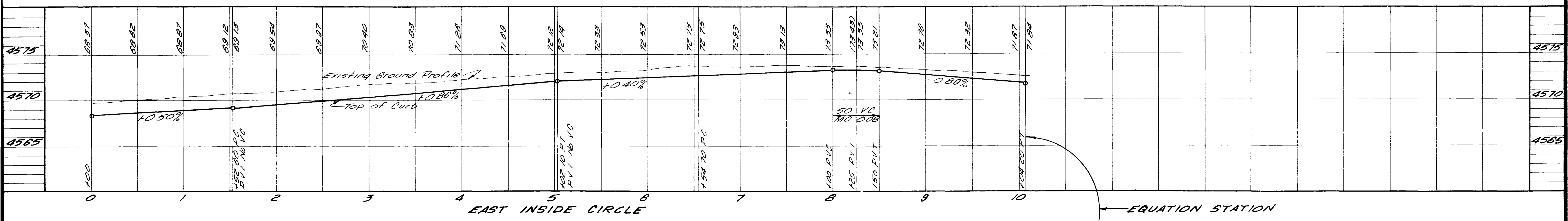
REVISIONS
 DATE: 10/27/10
 BY: [Signature]
 DATE: 10/27/10
 BY: [Signature]
 DATE: 10/27/10
 BY: [Signature]

DATE: 10/27/10
 SCALE: 1"=20'
 DRAWN: T.A.L.
 CHECKED: E.T.B.
 APPROVED: [Signature]

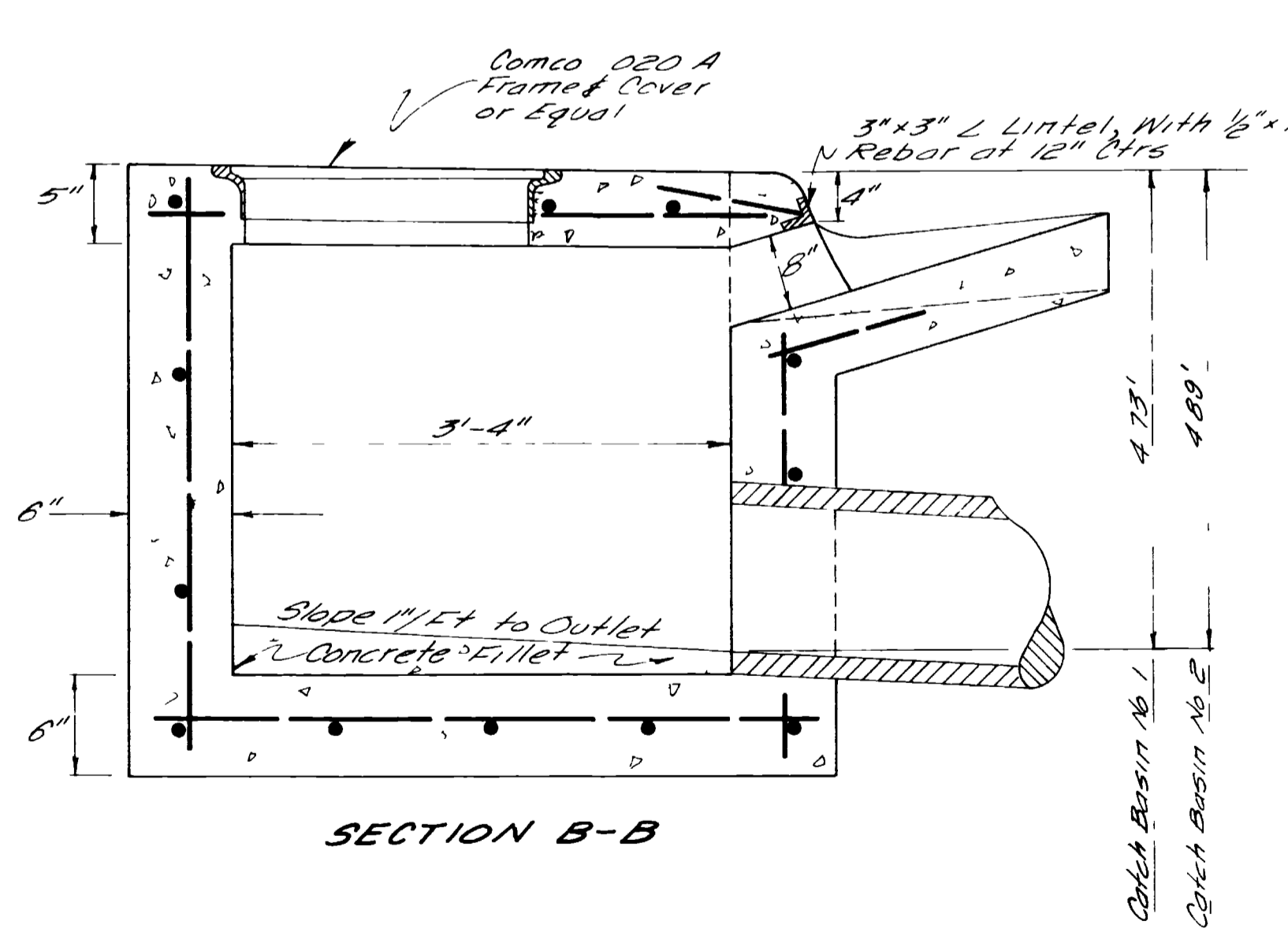
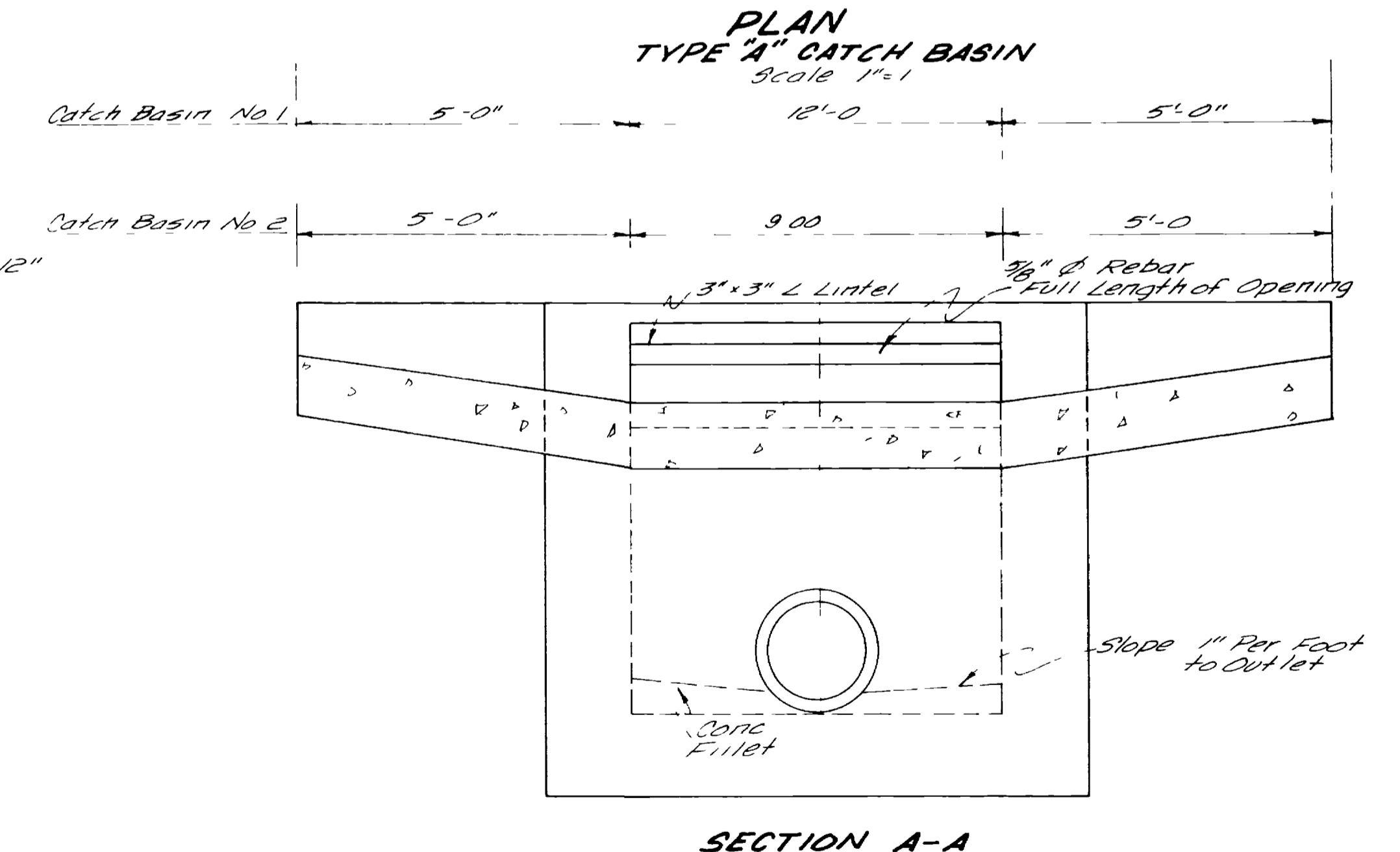
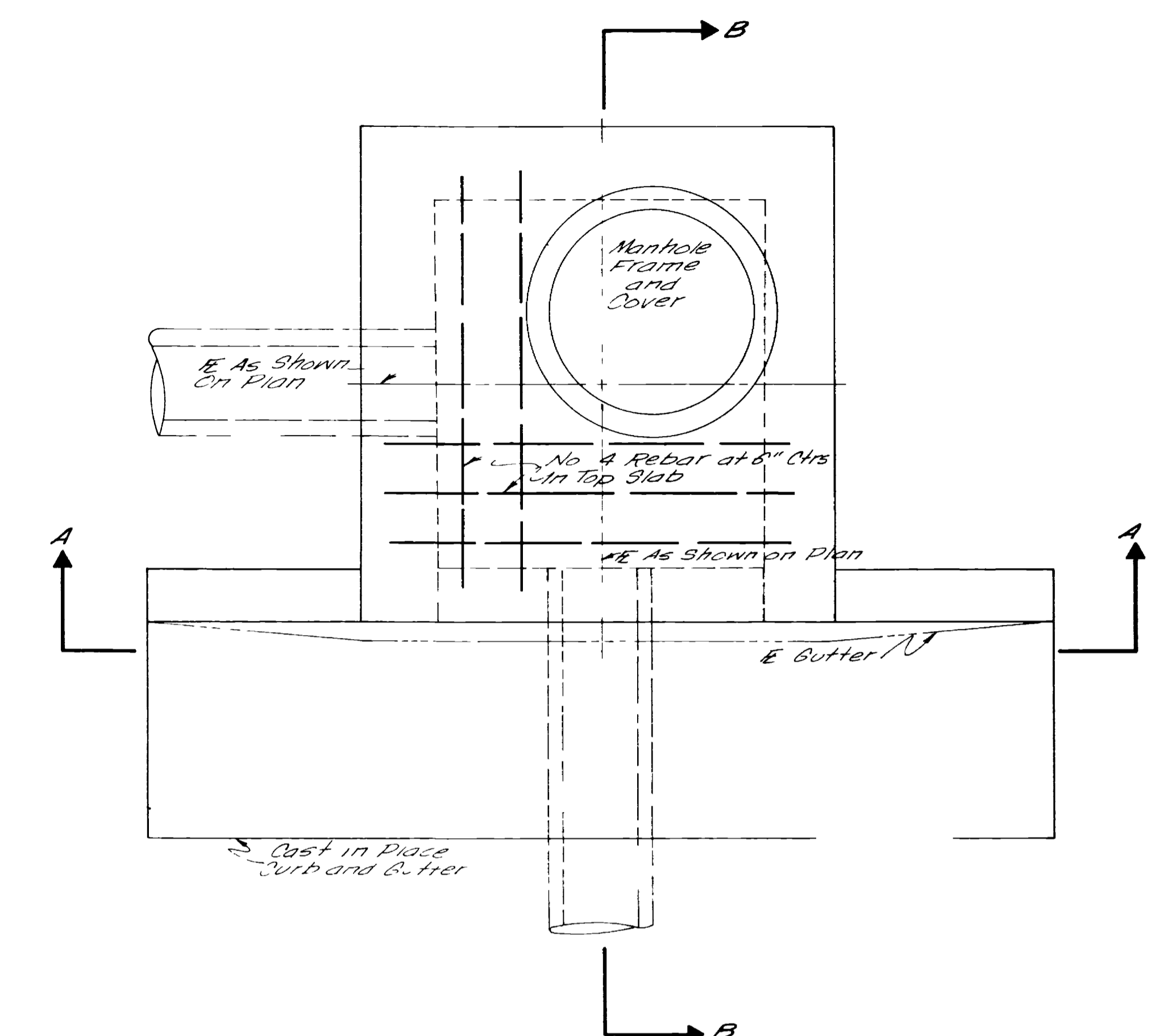
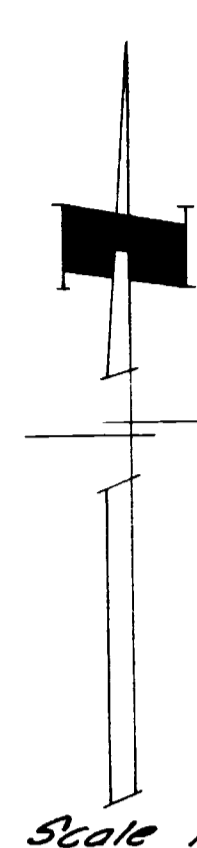
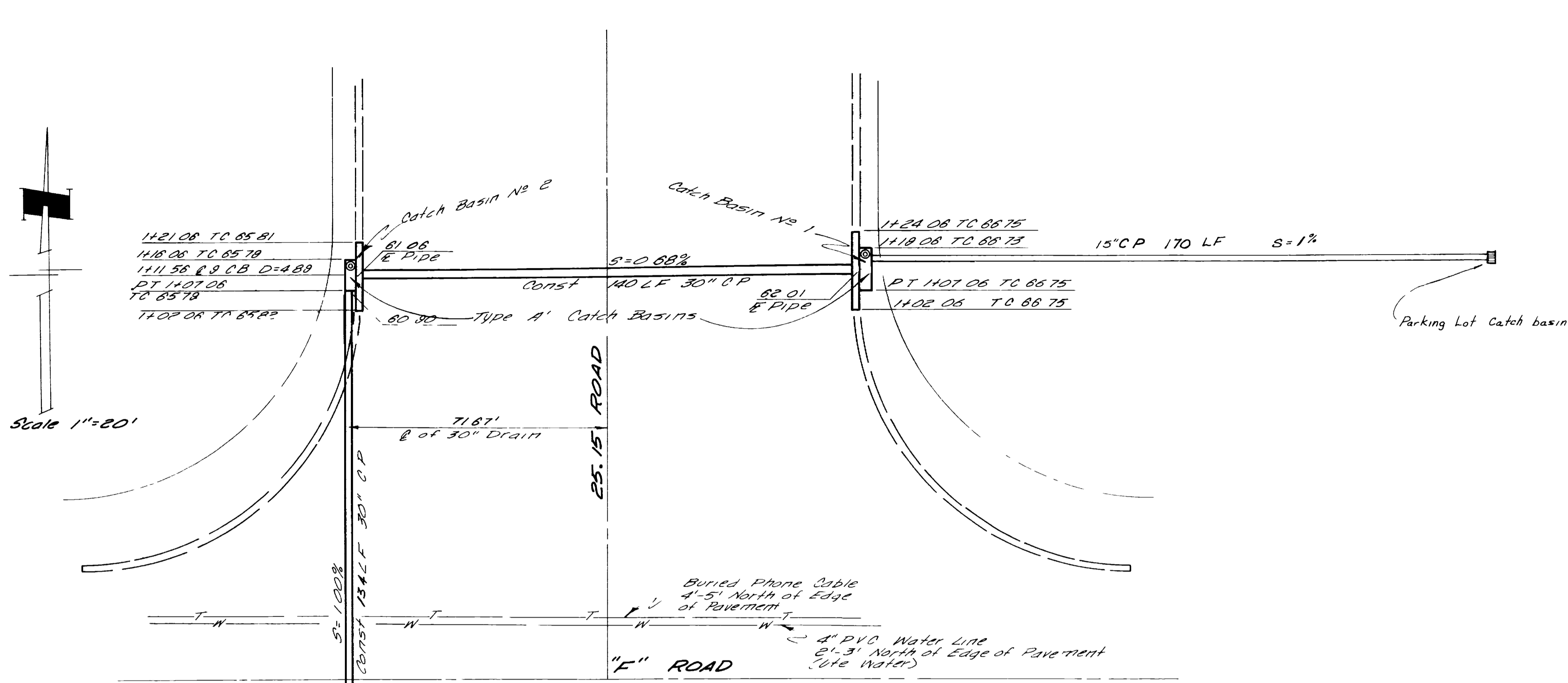
PROJECT NO: 682-817-0125
 NELSON - HALEY - PATTERSON AND QUIRK
 GREENEY ENGINEERING CONSULTANTS
 GRAND JUNCTION COLORADO

FORESITE PARK FOR INDUSTRY
 FILING NO 1

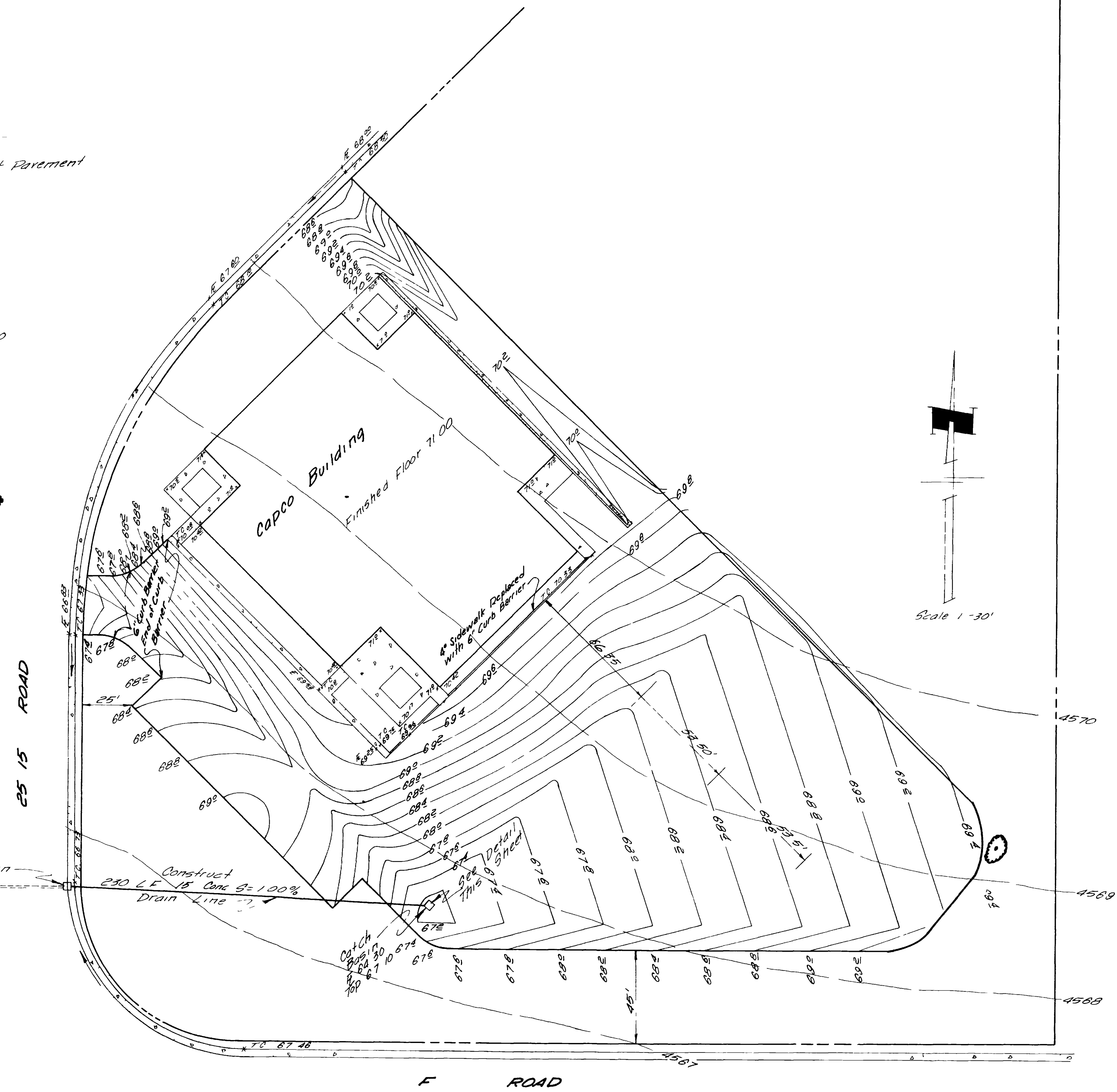
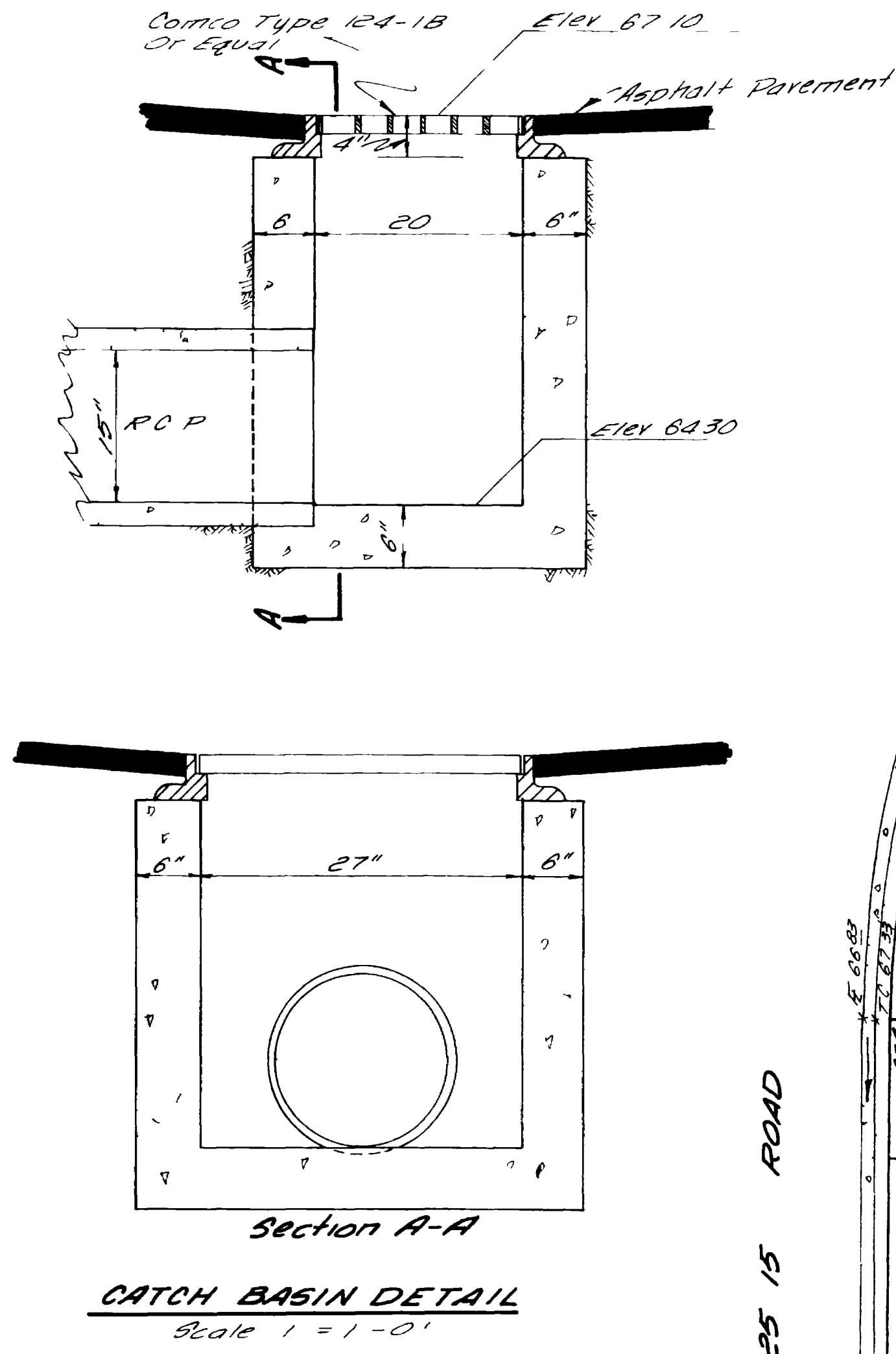
PROFILE - CURB & GUTTER
 SHEETS: 4
 SHEET: 2



REVISIONS		DATE	BY	DESCR	DATE	BY	DESCR	PROJECT NO	CONTRACT NO	PROJECT NAME	SHEET NO	TOTAL SHEETS
		June 1971	TAL		1"=5' Vert	JTP		69 2 BUT 0138		FORESITE PARK FOR INDUSTRY Filing No 1	4	3
					SCALE 1"=50' Horiz	ERB				GREELEY - Grand Junction - COLORADO		



REVISIONS BY: J.C.G. DATE: Nov. 12, 1971 DESCR: As-Built		DRAWN: T.A.L. CHECKED: J.T.P. APPROVED: E.R.B.	PROJECT NO: 89-2-61T-0136	NELSON - HALEY - PATTERSON AND QUIRK ENGINEERING CONSULTANTS Greeley Colorado	FORESITE PARK FOR INDUSTRY Filing No 1	CATCH BASIN DETAILS	SHEET 4 SHEETS 4	
DATE: June 1971 SCALE: As Shown								



REVISIONS	
BY <i>RA</i>	DATE <i>11.17.71</i>
BY _____	DATE _____
BY _____	DATE _____

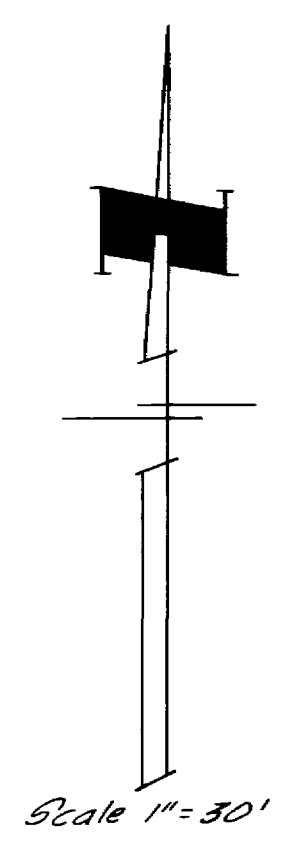
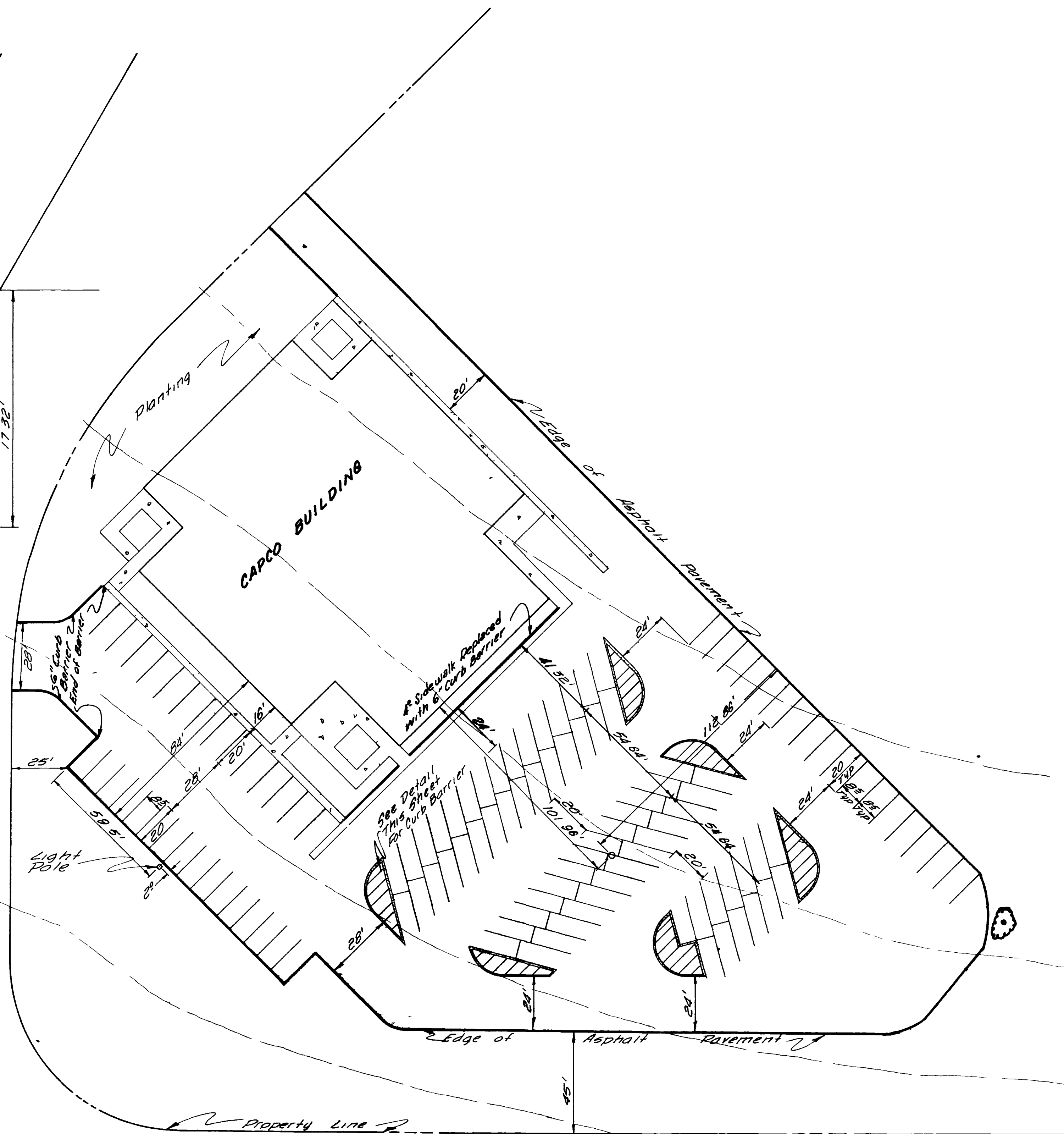
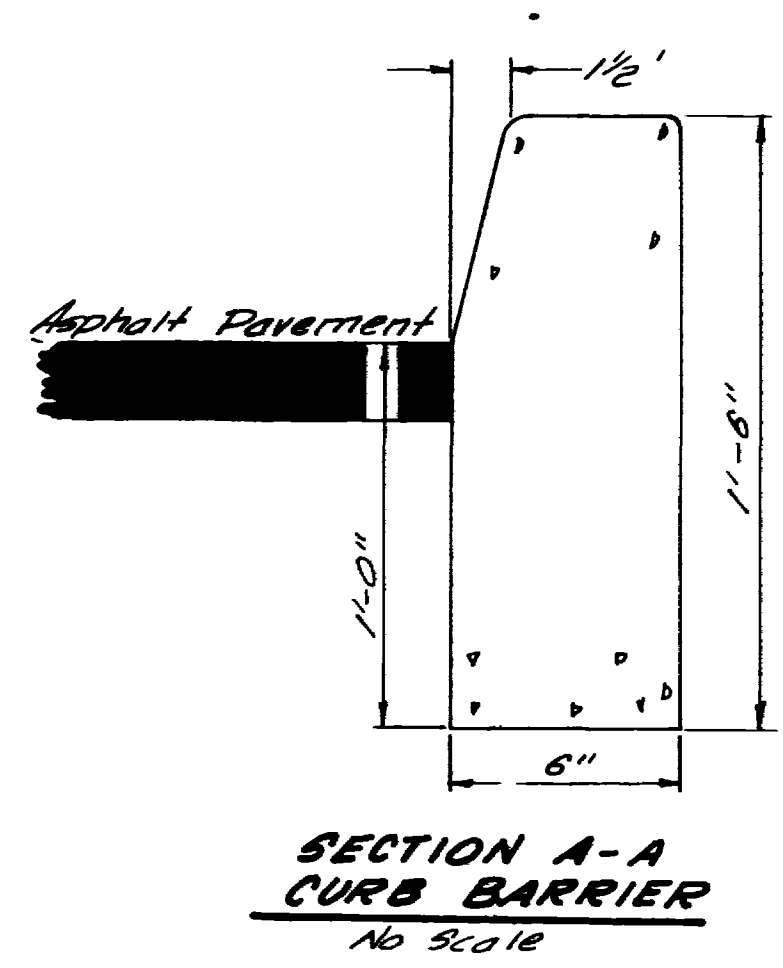
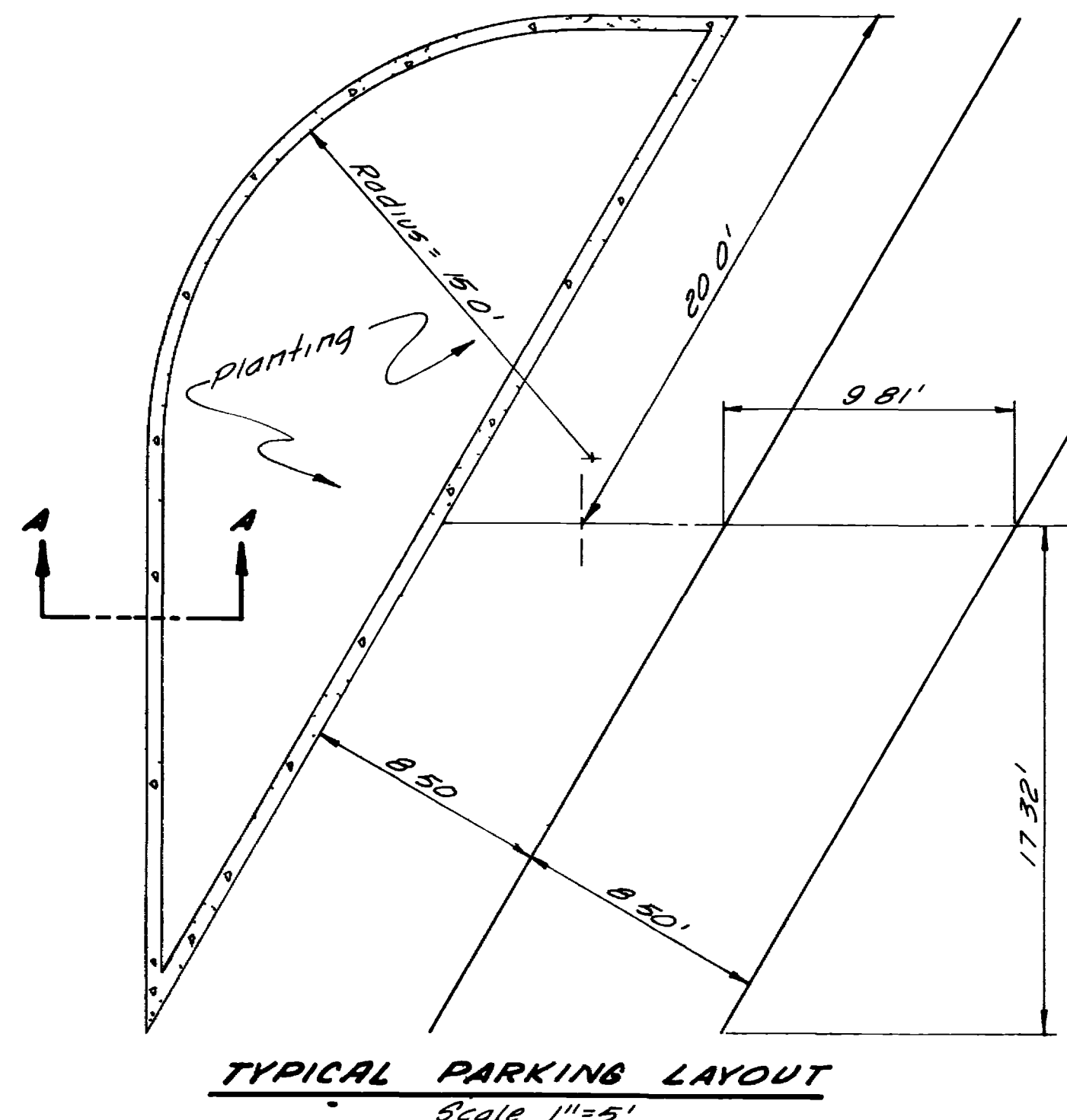
DATE <i>August, 1971</i>	DRAWN <i>JAL</i>	PROJECT NO. <i>69 2 GUT 0128</i>
SCALE <i>1" = 30'</i>	CHECKED <i>JTP</i>	
	APPROVED <i>ERB</i>	

NELSON - HALEY - PATTERSON AND QUIRK
ENGINEERING CONSULTANTS
GREELEY - Grand Junction COLORADO

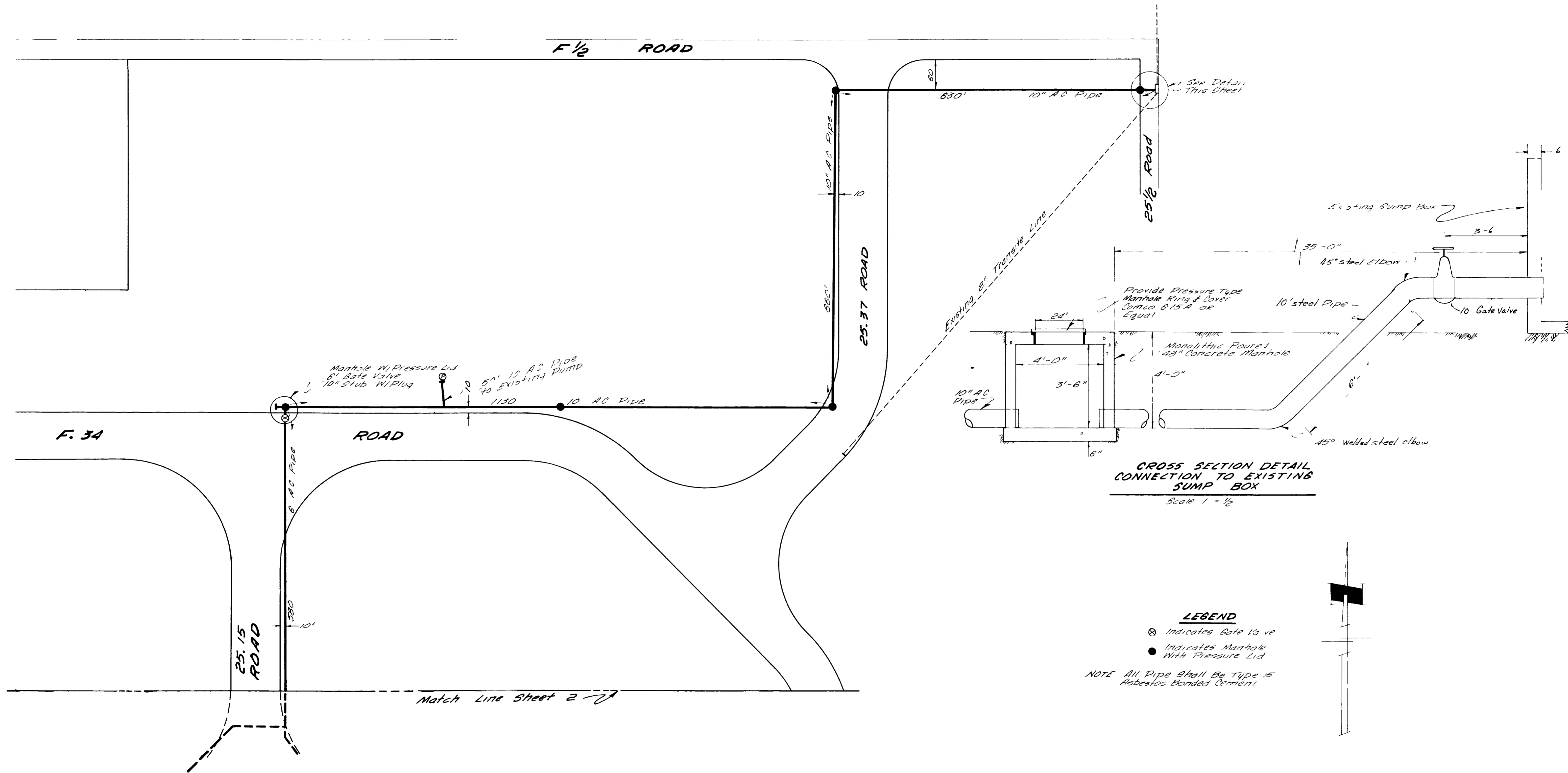
FORESITE PARK FOR INDUSTRY
Filing No. 1

PARKING LOT
GRADING PLAN

2	SHEET
1	SHEETS



REVISIONS				DATE	DRAWN	CHECKED	APPROVED	PROJECT NO.	ENGINEERING CONSULTANTS	LOCATION	PROJECT NAME	SHEET NO.	TOTAL SHEETS
BY	DATE	DESCR.	BY	DATE	DESCR.	BY	DATE	DESCR.	SCALE				
BY <i>RA</i>	DATE <i>11-17-71</i>	DESCR. <i>As Quoted</i>	BY	DATE	DESCR.	BY	DATE	DESCR.	SCALE <i>As Shown</i>			2	2
				DATE <i>August, 1971</i>	DRAWN <i>TAL</i>	CHECKED <i>JTP</i>	APPROVED <i>ERB</i>	PROJECT NO. <i>89 2 817 0138</i>	NELSON - HALEY - PATTERSON AND QUIRK	COLORADO	FORESITE PARK FOR INDUSTRY <i>Filing No. 1</i>	PARKING LOT LAYOUT	

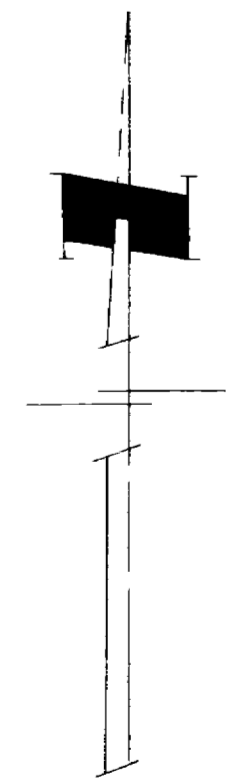


**CROSS SECTION DETAIL
CONNECTION TO EXISTING
SUMP BOX**
Scale 1" = 1/2'

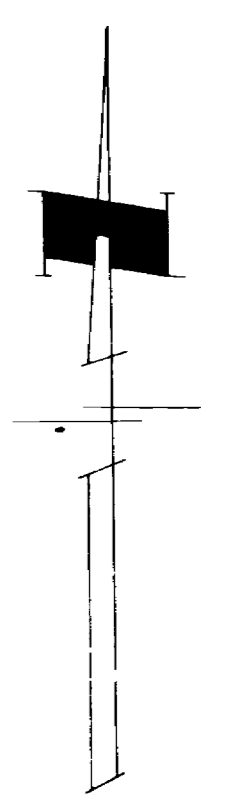
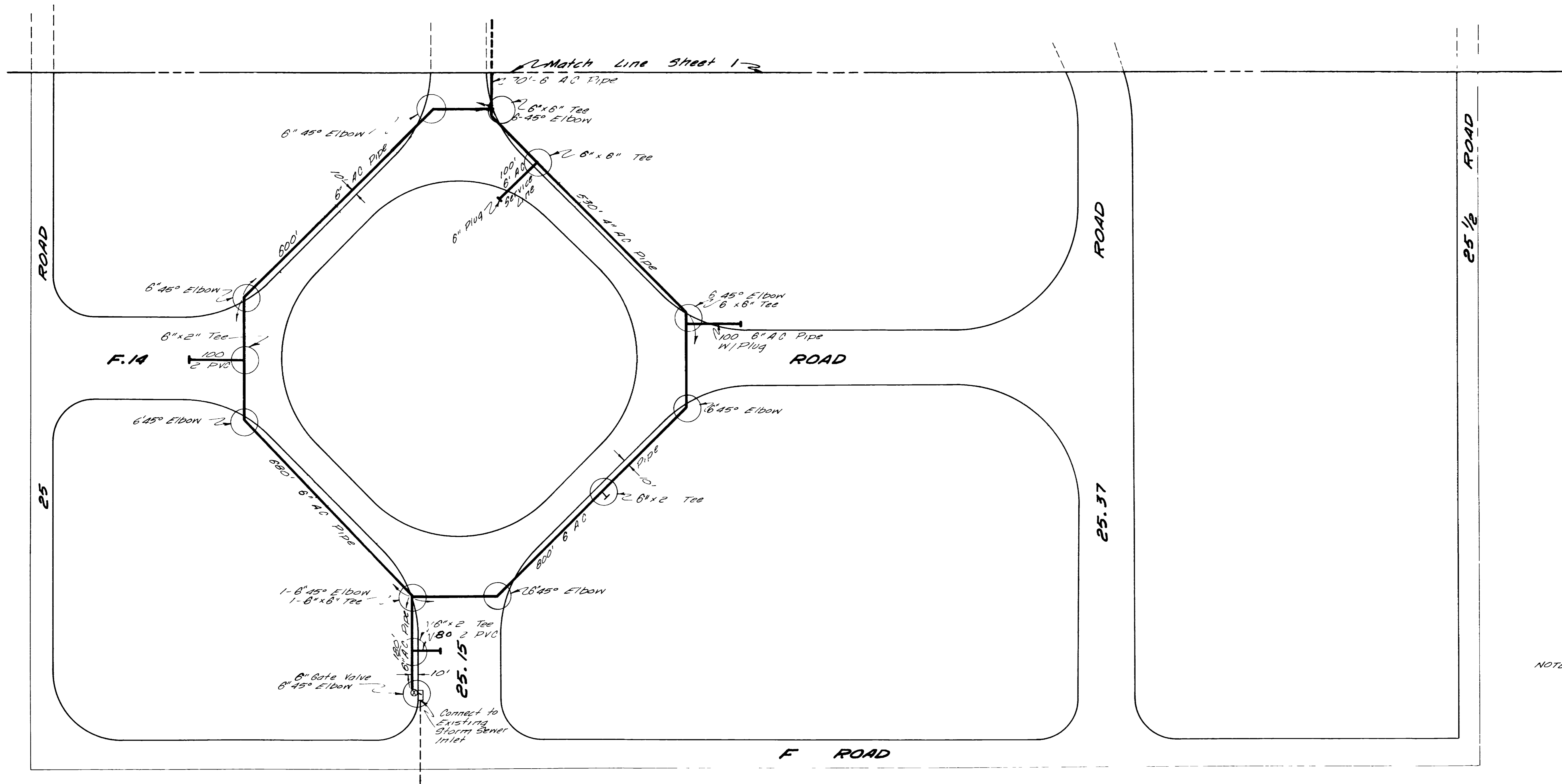
LEGEND

- ⊗ Indicates Gate Valve
- Indicates Manhole With Pressure Lid

NOTE All Pipe Shall Be Type 15
Asbestos Bonded Cement



REVISIONS BY J.C.G. DATE Mar. 22, 1977 DESCR As-Built BY _____ DATE _____ DESCR _____ BY _____ DATE _____ DESCR _____		DATE August, 1971 SCALE 1" = 100'	DRAWN T.A.L. CHECKED J.E.W. APPROVED E.R.B.	PROJECT NO 69 2 BUT 0130	NELSON - HALEY - PATTERSON AND QUIRK ENGINEERING CONSULTANTS GREELEY - Grand Junction COLORADO	Foresite Park For Industry	IRRIGATION SYSTEM	SHEET 2 SHEETS 1
--------------------------------------------------------------------------------------------------------------------------------	--	--------------------------------------	---------------------------------------------------	-----------------------------	------------------------------------------------------------------------------------------------------	----------------------------	-------------------	------------------------



LEGEND

- ⊗ Indicates Gate Valve
- Indicates Manhole With Pressure Lid

NOTE All Pipe Shall Be Type 15 Asbestos Bonded Cement

BY J.C.G. DATE Nov 22, 1971 BY _____ DATE _____ BY _____ DATE _____	REVISIONS As Built _____ _____ _____	DATE August, 1971 SCALE 1"=100' DRAWN T.A.L. CHECKED G.F.W. APPROVED E.R.B.	PROJECT NO 69 2 BUT 0138 NELSON - HALEY - PATTERSON AND QUIRK ENGINEERING CONSULTANTS GREELEY - Grand Junction COLORADO	Foresite Park for Industry	IRRIGATION SYSTEM	2 SHEETS	SHEET 2
------------------------------------------------------------------------------------	---------------------------------------------------------	-----------------------------------------------------------------------------------------	-------------------------------------------------------------------------------------------------------------------------------------	----------------------------	-------------------	-------------	------------