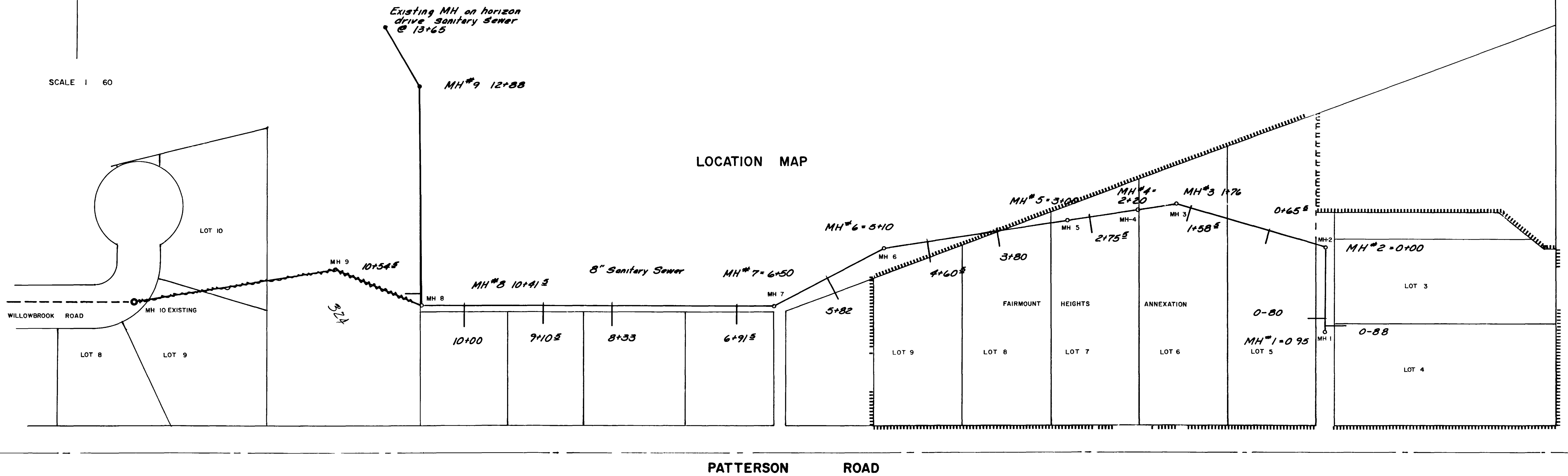


# FAIRMOUNT HEIGHTS SANITARY SEWER

## SANITARY SEWER DISTRICT 23-67 AND OUTFALL LINE



SCALE 1" = 60'



*These sewer tap locations were taken from field book #272*

FAIRMOUNT HEIGHTS  
SANITARY SEWER  
AND OUTFALL LINE  
GRAND JUNCTION COLORADO

DWG. E.W.  
NOV. 1967  
FIELD BOOK 272

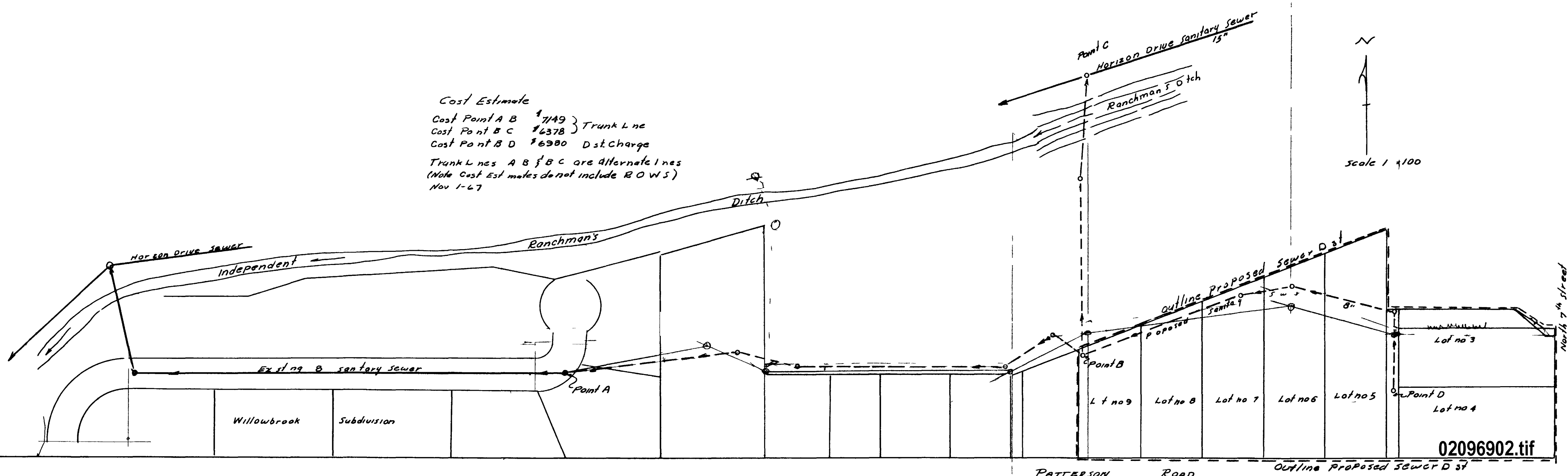
APPROVER  
*[Signature]*

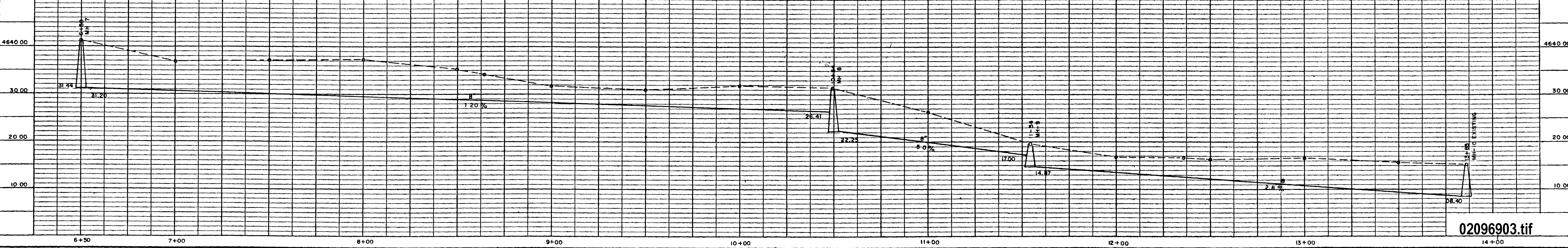
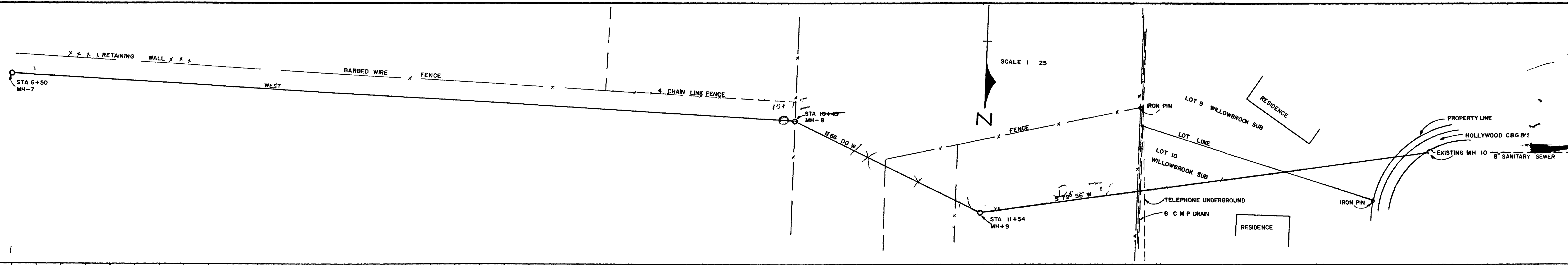
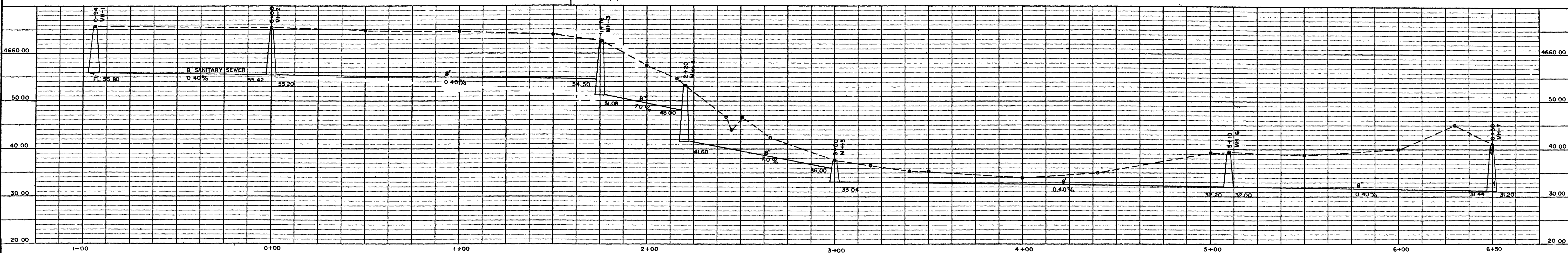
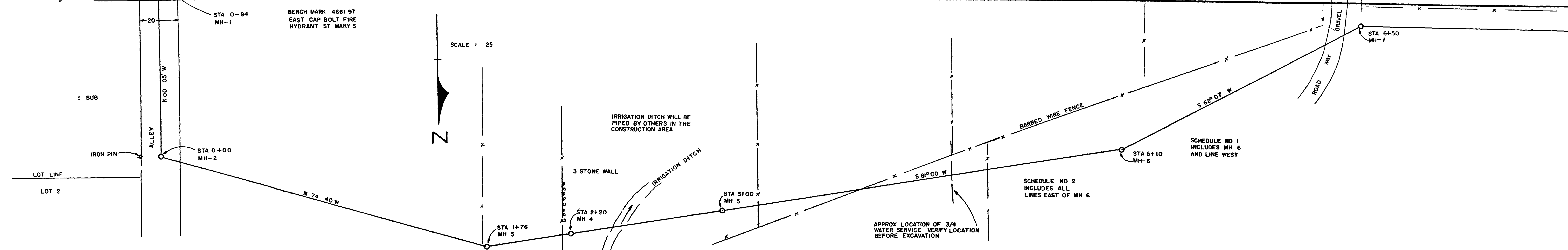
*Tap locations added 1-22-80  
Luther Martin*

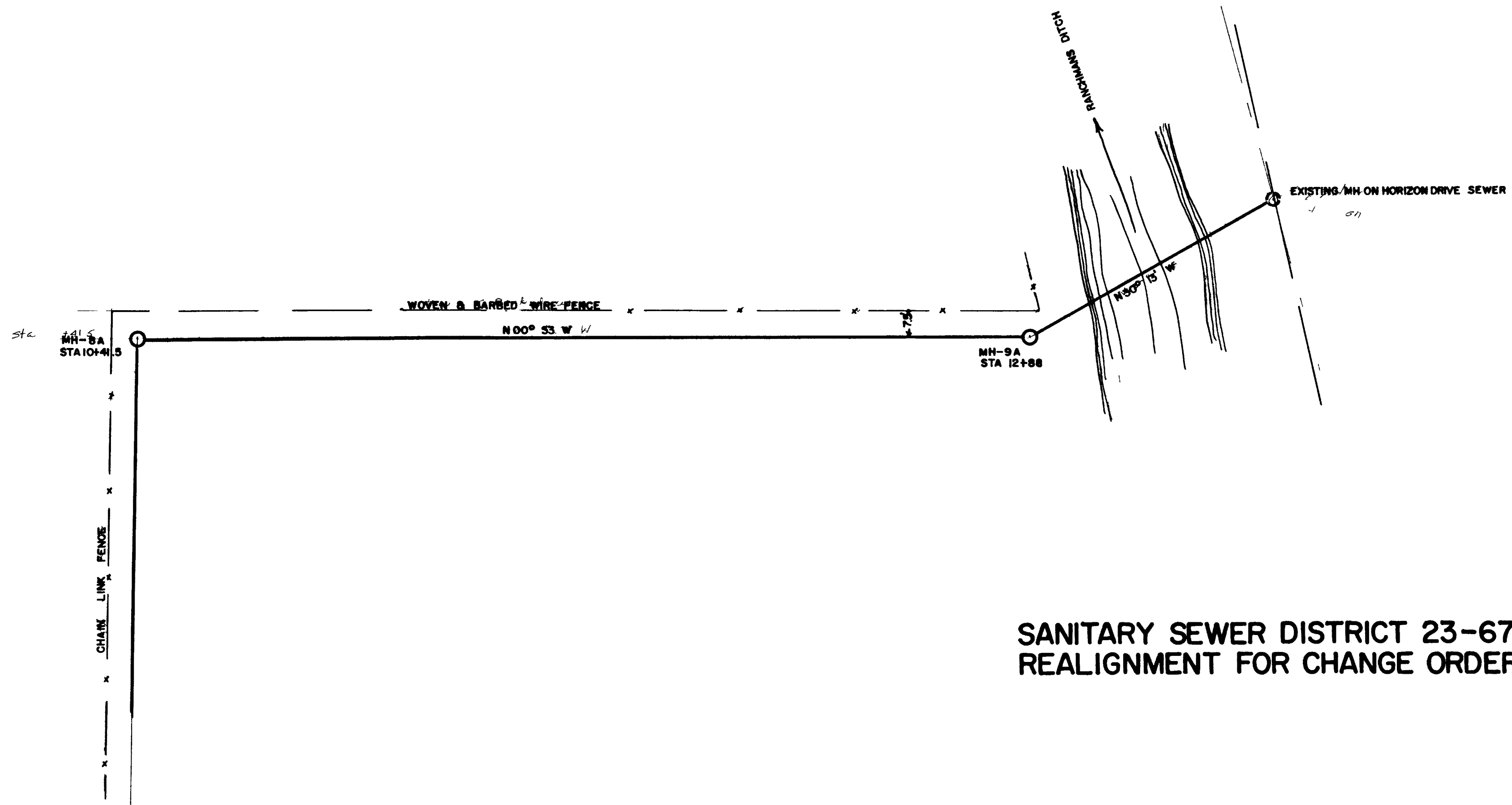
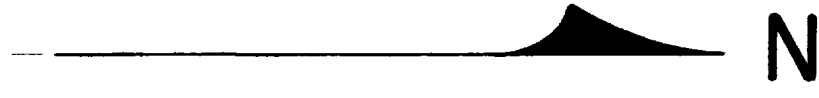
02096901.tif

1/4 COR  
SEC 2 T1S R1W  
UPM

Cost Estimate  
 Cost Point A B \$7149 } Trunk Line  
 Cost Point B C \$6378 }  
 Cost Point B D \$6980 Dist. Charge  
 Trunk Lines A B & B C are Alternate Lines  
 (Note Cost Estimates do not include R.O.W.S)  
 Nov 1-67







**SANITARY SEWER DISTRICT 23-67  
REALIGNMENT FOR CHANGE ORDER NO 1**

**NOTES ON CROSSING OF RANCHMAN'S DITCH**

- 1 BETWEEN MAN HOLES 9A AND STA 13+65 THERE SHALL BE INSTALLED STEEL PIPE
- 2 PIPE WILL BE 8" O.D 12 GAGE COAL TAR ENAMEL AND CEMENT MORTAR LINED PIPE WILL BE DELIVERED IN THREE SECTIONS ONE SECTION IS ONE 40 AND ONE 18 LONG
- 3 TWO STYLE 36 DRESSER COUPLINGS OR EQUAL WILL BE USED TO MAKE THE FIELD CONNECTIONS
- 4 CONCRETE SUPPORT PADS SHALL BE POURED AT EACH END OF THE 40 SECTION WHICH IS THE MIDPOINT SECTION THAT SPANS THE RANCHMAN'S DITCH

