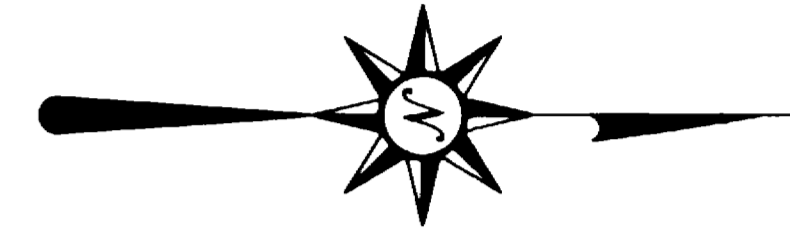


SEWER NOTES

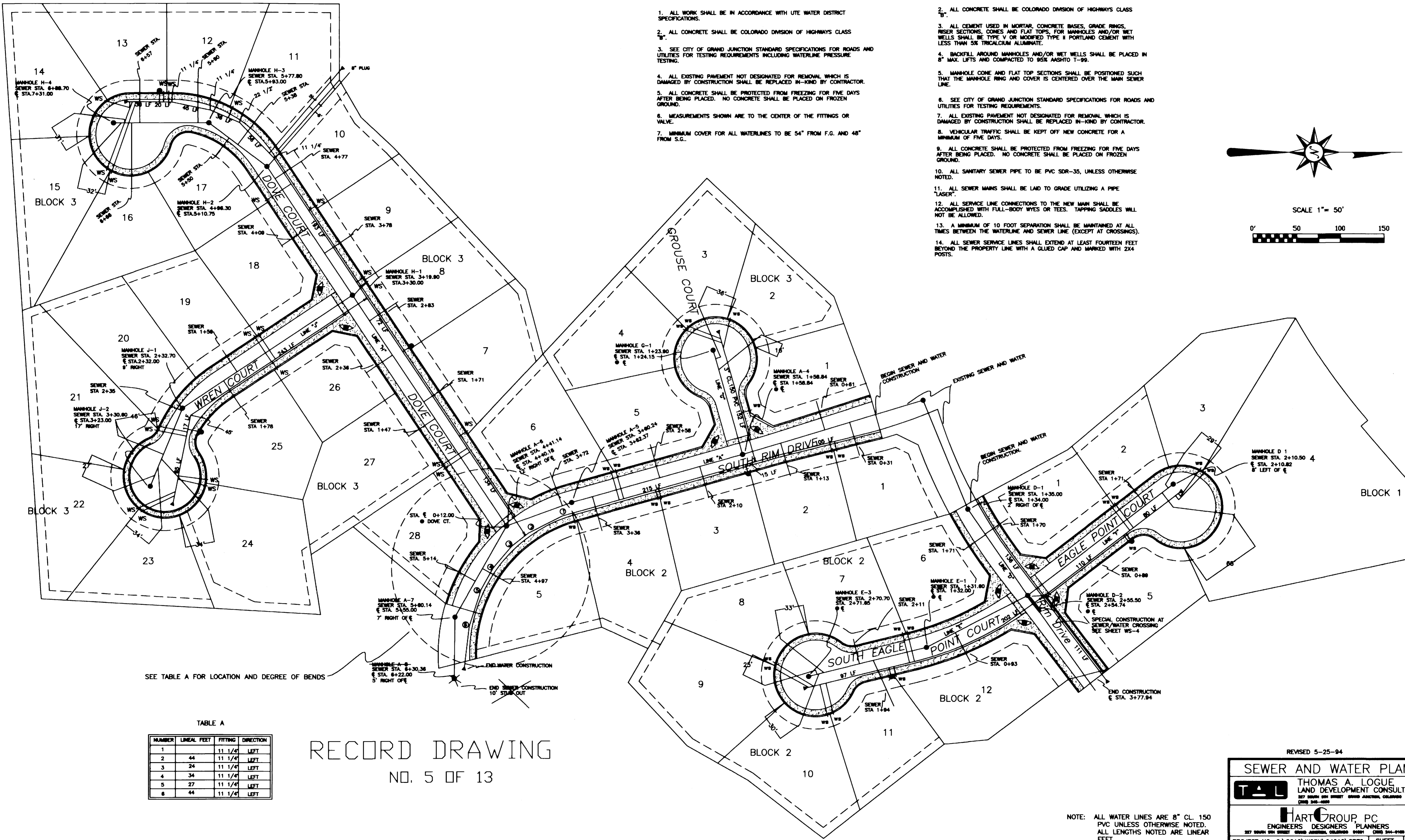
WATER NOTES

1. ALL WORK SHALL BE IN ACCORDANCE WITH UTE WATER DISTRICT SPECIFICATIONS.
2. ALL CONCRETE SHALL BE COLORADO DIVISION OF HIGHWAYS CLASS "B".
3. SEE CITY OF GRAND JUNCTION STANDARD SPECIFICATIONS FOR ROADS AND UTILITIES FOR TESTING REQUIREMENTS INCLUDING WATERLINE PRESSURE TESTING.
4. ALL EXISTING PAVEMENT NOT DESIGNATED FOR REMOVAL WHICH IS DAMAGED BY CONSTRUCTION SHALL BE REPLACED IN-KIND BY CONTRACTOR.
5. ALL CONCRETE SHALL BE PROTECTED FROM FREEZING FOR FIVE DAYS AFTER BEING PLACED. NO CONCRETE SHALL BE PLACED ON FROZEN GROUND.
6. MEASUREMENTS SHOWN ARE TO THE CENTER OF THE FITTINGS OR VALVE.
7. MINIMUM COVER FOR ALL WATERLINES TO BE 54" FROM F.G. AND 48" FROM S.G..

1. ALL WORK SHALL BE IN ACCORDANCE WITH CITY OF GRAND JUNCTION SPECIFICATIONS.
2. ALL CONCRETE SHALL BE COLORADO DIVISION OF HIGHWAYS CLASS "B".
3. ALL CEMENT USED IN MORTAR, CONCRETE BASES, GRADE RINGS, RISER SECTIONS, CONES AND FLAT TOPS, FOR MANHOLES AND/OR WET WELLS SHALL BE TYPE V OR MODIFIED TYPE II PORTLAND CEMENT WITH LESS THAN 5% TRICALCIUM ALUMINATE.
4. BACKFILL AROUND MANHOLES AND/OR WET WELLS SHALL BE PLACED IN 8" MAX. LIFTS AND COMPACTED TO 95% AASHTO T-99.
5. MANHOLE CONE AND FLAT TOP SECTIONS SHALL BE POSITIONED SUCH THAT THE MANHOLE RING AND COVER IS CENTERED OVER THE MAIN SEWER LINE.
6. SEE CITY OF GRAND JUNCTION STANDARD SPECIFICATIONS FOR ROADS AND UTILITIES FOR TESTING REQUIREMENTS.
7. ALL EXISTING PAVEMENT NOT DESIGNATED FOR REMOVAL WHICH IS DAMAGED BY CONSTRUCTION SHALL BE REPLACED IN-KIND BY CONTRACTOR.
8. VEHICULAR TRAFFIC SHALL BE KEPT OFF NEW CONCRETE FOR A MINIMUM OF FIVE DAYS.
9. ALL CONCRETE SHALL BE PROTECTED FROM FREEZING FOR FIVE DAYS AFTER BEING PLACED. NO CONCRETE SHALL BE PLACED ON FROZEN GROUND.
10. ALL SANITARY SEWER PIPE TO BE PVC SDR-35, UNLESS OTHERWISE NOTED.
11. ALL SEWER MAINS SHALL BE LAID TO GRADE UTILIZING A PIPE "LASER".
12. ALL SERVICE LINE CONNECTIONS TO THE NEW MAIN SHALL BE ACCOMPLISHED WITH FULL-BODY WYES OR TEES. TAPPING SADDLES WILL NOT BE ALLOWED.
13. A MINIMUM OF 10 FOOT SEPARATION SHALL BE MAINTAINED AT ALL TIMES BETWEEN THE WATERLINE AND SEWER LINE (EXCEPT AT CROSSINGS).
14. ALL SEWER SERVICE LINES SHALL EXTEND AT LEAST FOURTEEN FEET BEYOND THE PROPERTY LINE WITH A GLOUED CAP AND MARKED WITH 2X4 POSTS.



SCALE 1"= 50'



SEE TABLE A FOR LOCATION AND DEGREE OF BENDS

TABLE A

NUMBER	LINEAL FEET	FITTING	DIRECTION
1	11	1 1/4"	LEFT
2	44	11 1/4"	LEFT
3	24	11 1/4"	LEFT
4	34	11 1/4"	LEFT
5	27	11 1/4"	LEFT
6	44	11 1/4"	LEFT

RECORD DRAWING
NO. 5 OF 13

REVISED 5-25-94

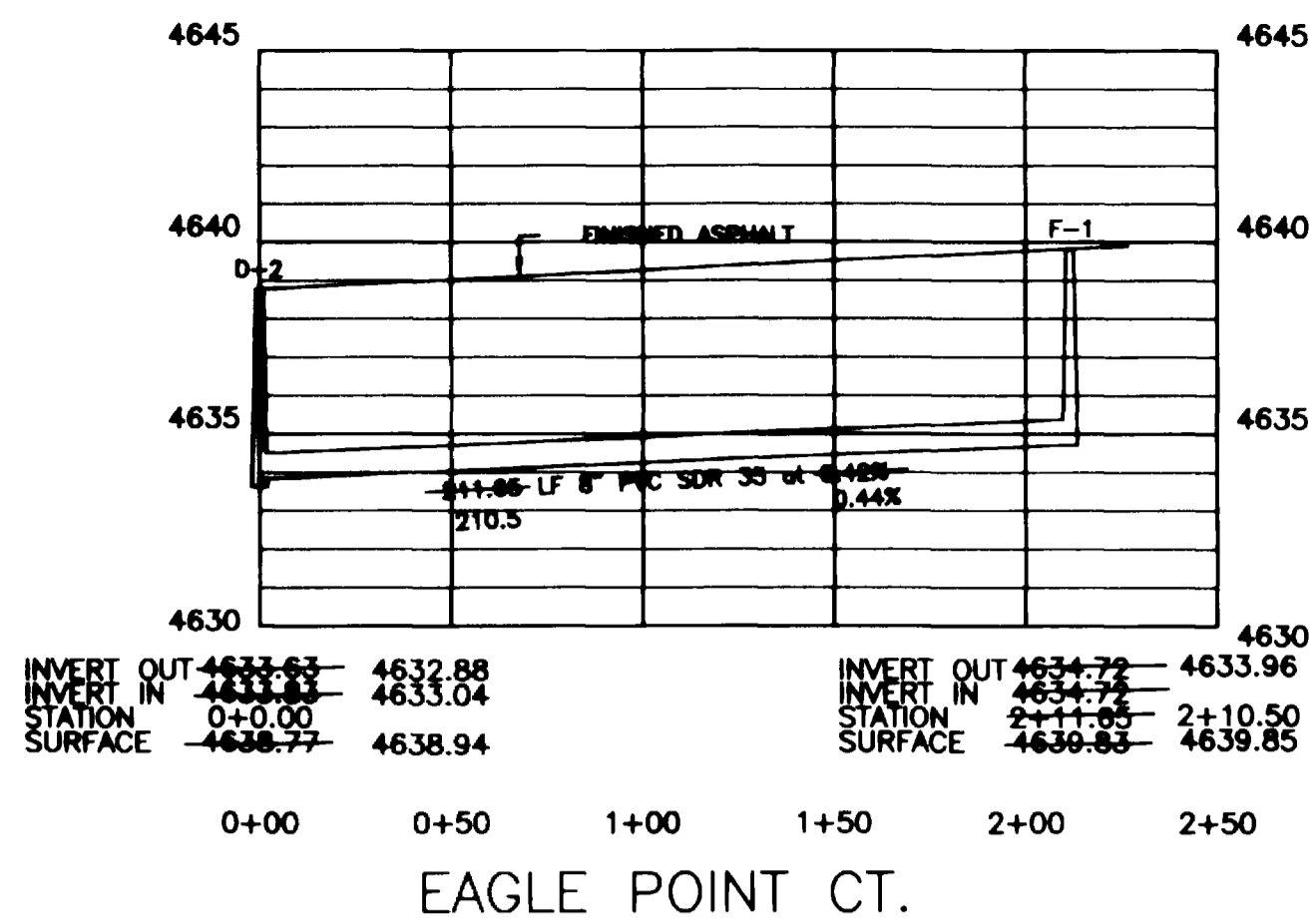
SEWER AND WATER PLAN

TAL THOMAS A. LOGUE
LAND DEVELOPMENT CONSULTANTS
227 SOUTH 9TH STREET GRAND JUNCTION, COLORADO 81501
(970) 244-0100

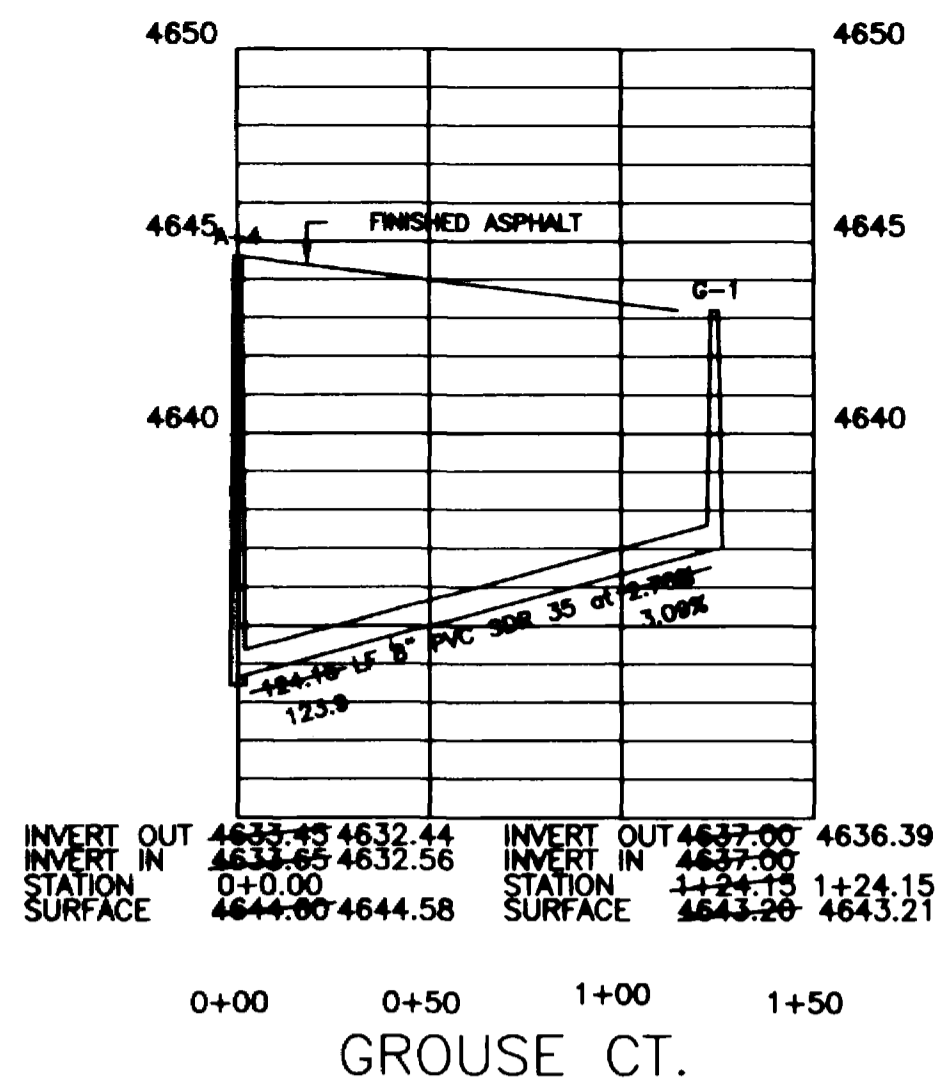
HART GROUP PC
ENGINEERS DESIGNERS PLANNERS
227 SOUTH 9TH STREET GRAND JUNCTION, COLORADO 81501
(970) 244-0100

PROJECT NO. C:\SC12\WORK\94012\SRF2 SHEET OF
DATE: MARCH, 1994 SW-1 4

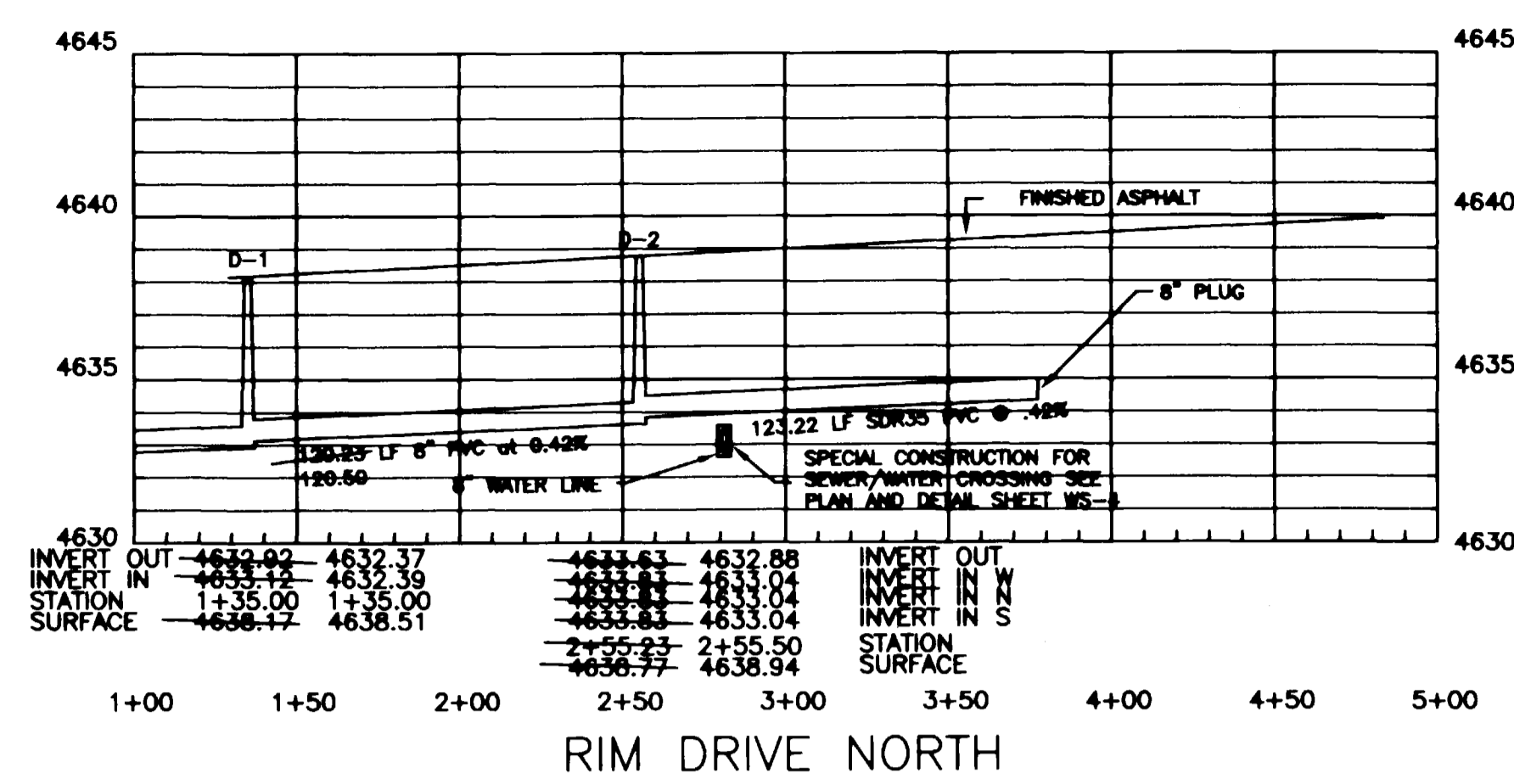
NOTE: ALL WATER LINES ARE 8" CL. 150 PVC UNLESS OTHERWISE NOTED. ALL LENGTHS NOTED ARE LINEAR FEET.



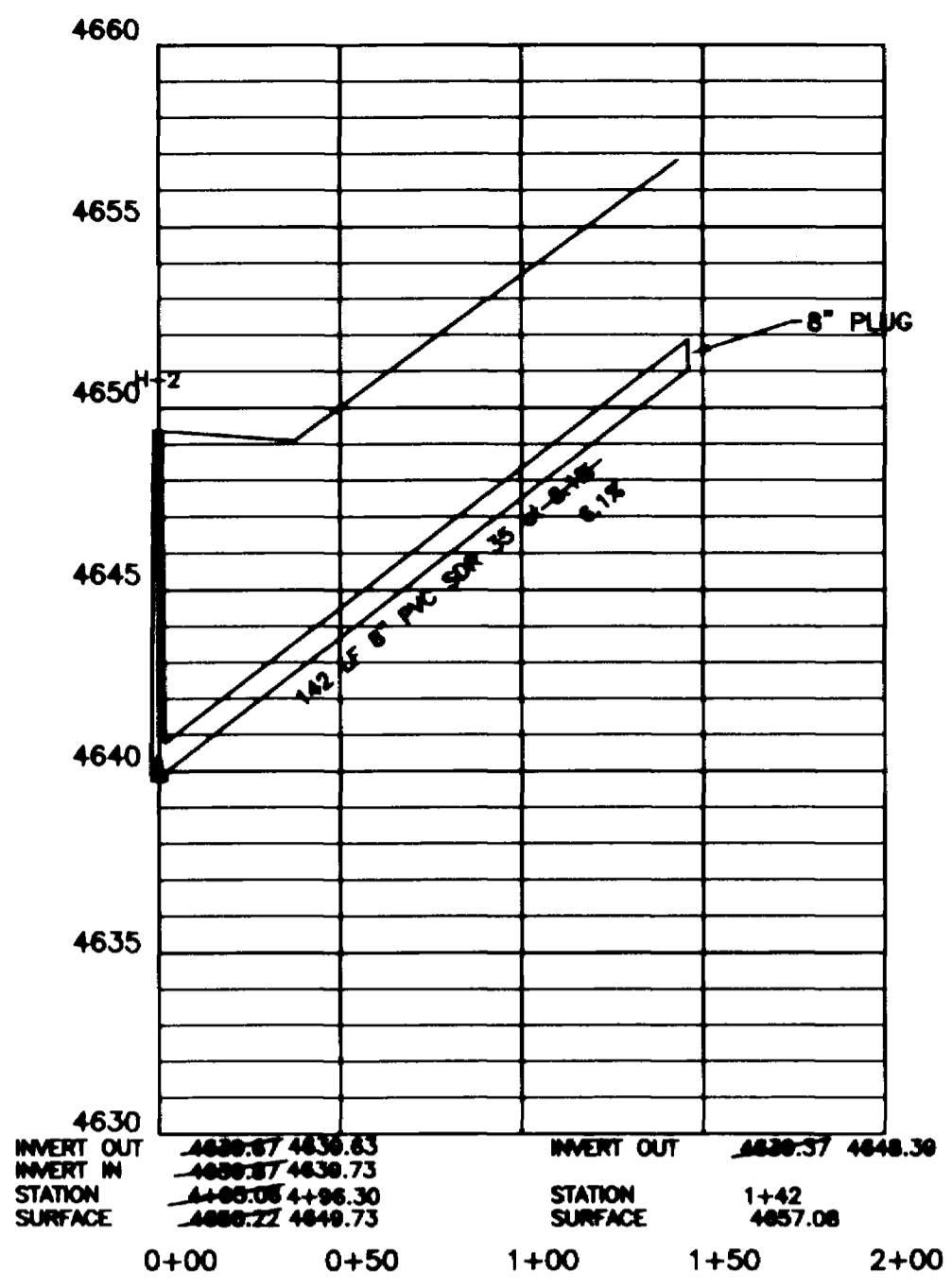
EAGLE POINT CT.



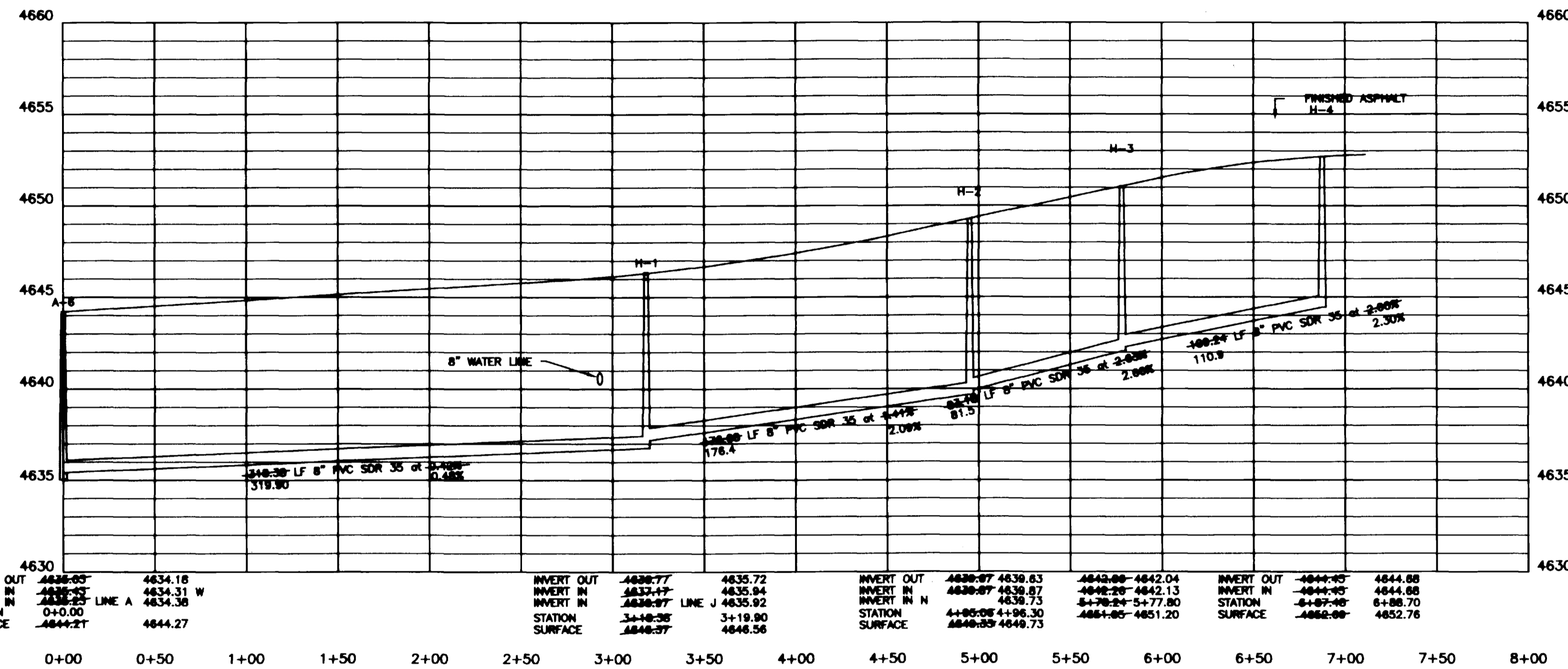
GROUSE CT.



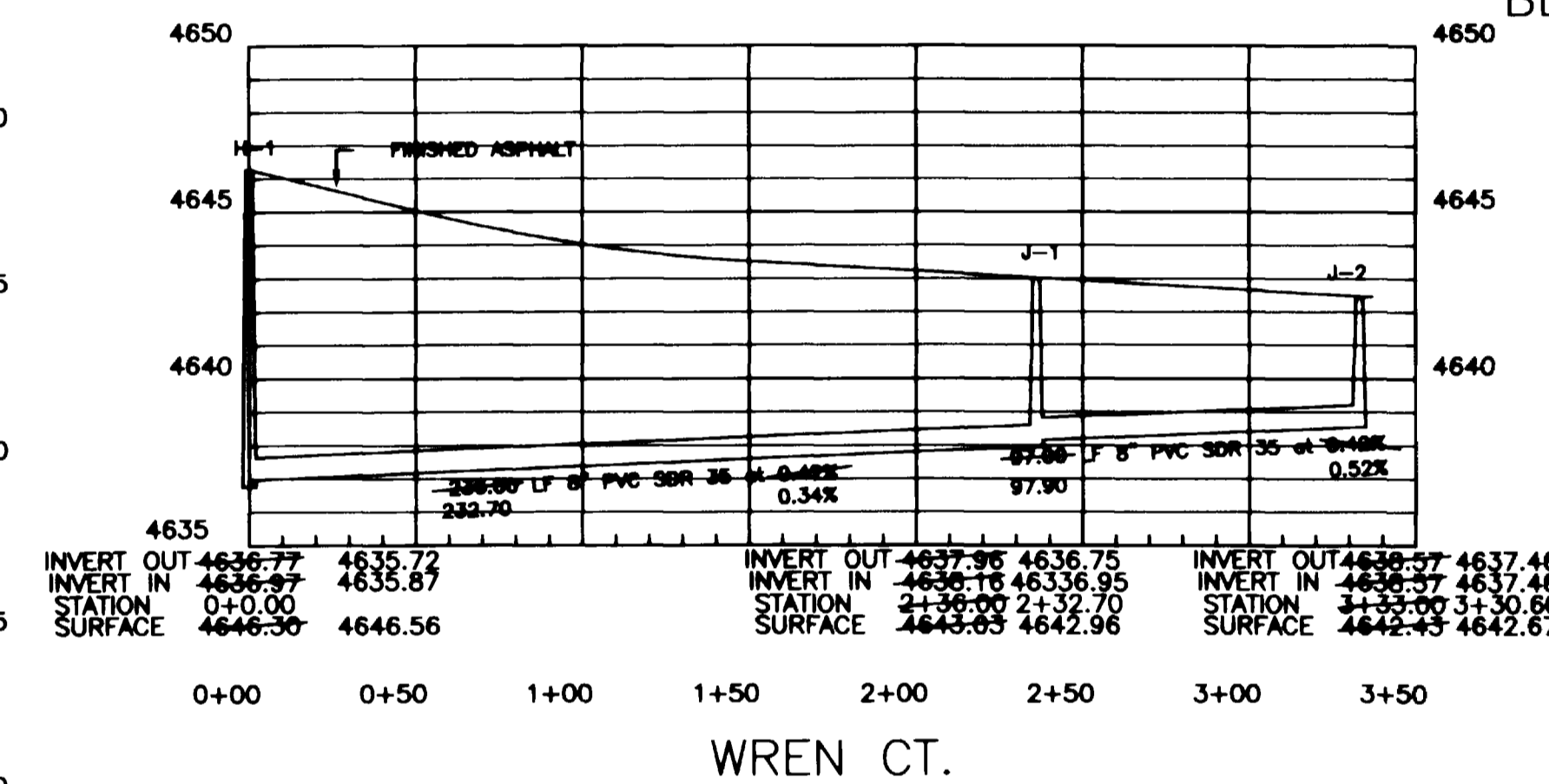
RIM DRIVE NORTH



OFF SITE SEWER @
BLOCK 3 LOT 10 & 11

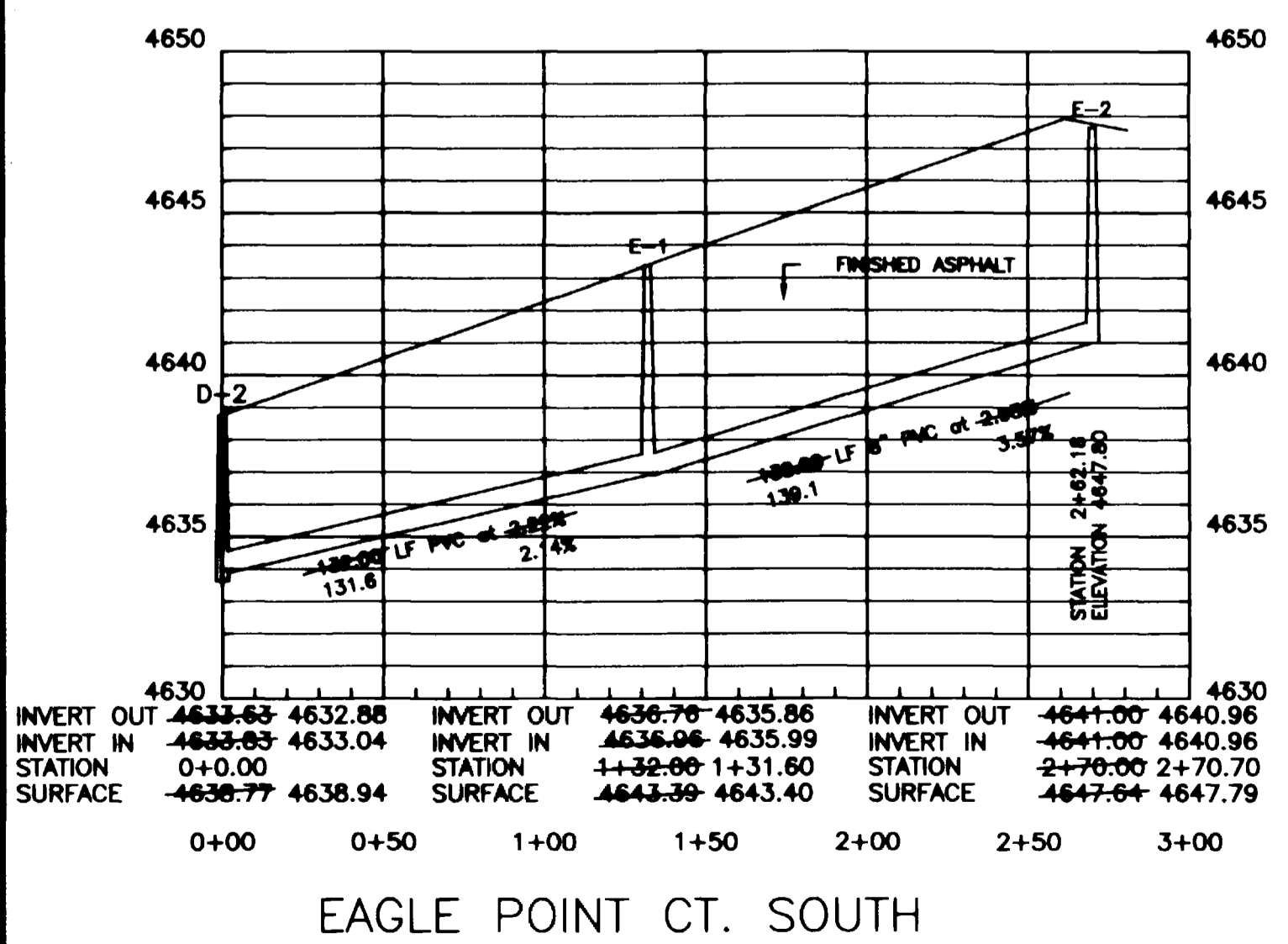


DOVE CT.

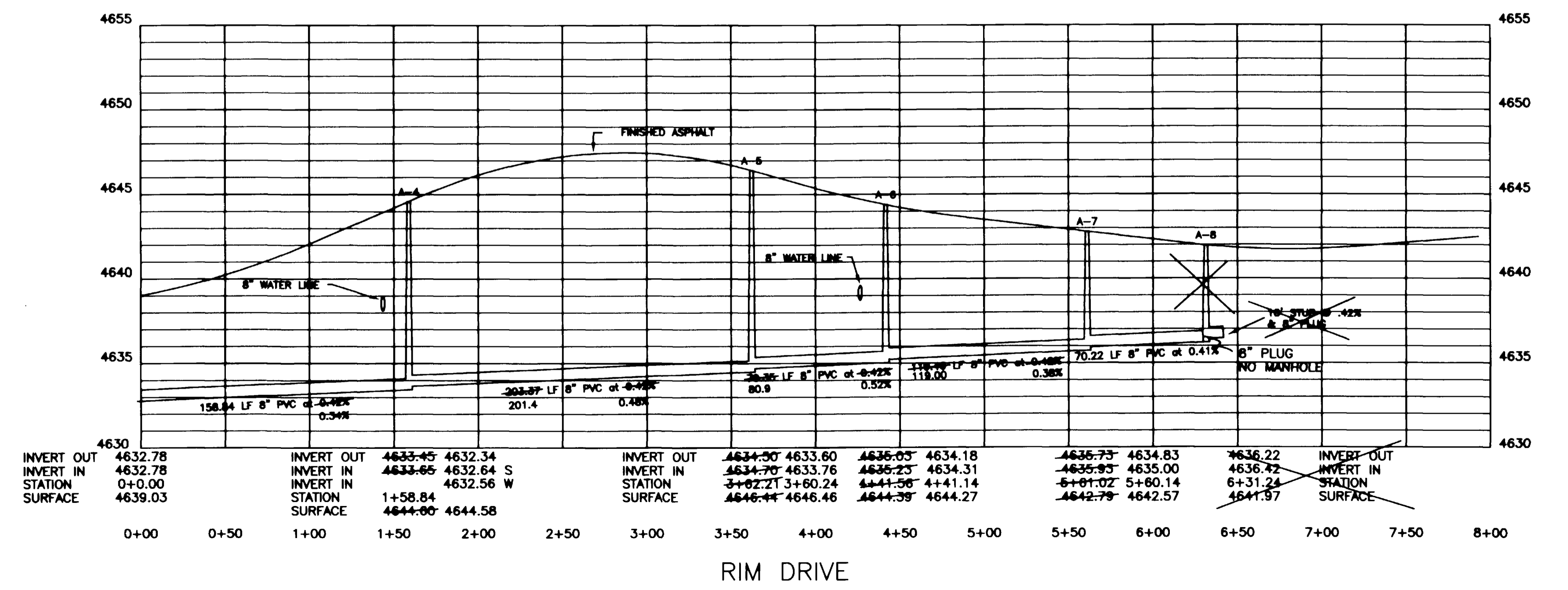


WREN CT.

RECORD DRAWING
NO. 6 OF 13



EAGLE POINT CT. SOUTH



RIM DRIVE

HORIZONTAL SCALE 1" = 50'
VERTICAL SCALE 1" = 5'

REVISED 5-25-94

SEWER PROFILES

TAL THOMAS A. LOGUE
LAND DEVELOPMENT CONSULTANTS
227 SOUTH 9TH STREET SUITE 2000 DENVER, COLORADO 80202
(303) 246-0000

HART GROUP PC
ENGINEERS DESIGNERS PLANNERS
227 SOUTH 9TH STREET SUITE 2000 DENVER, COLORADO 80202
(303) 246-0100

PROJECT NO. C:\3012\WORK\04012\04012PRO SHEET OF
DATE: MARCH, 1994 SW-2 4