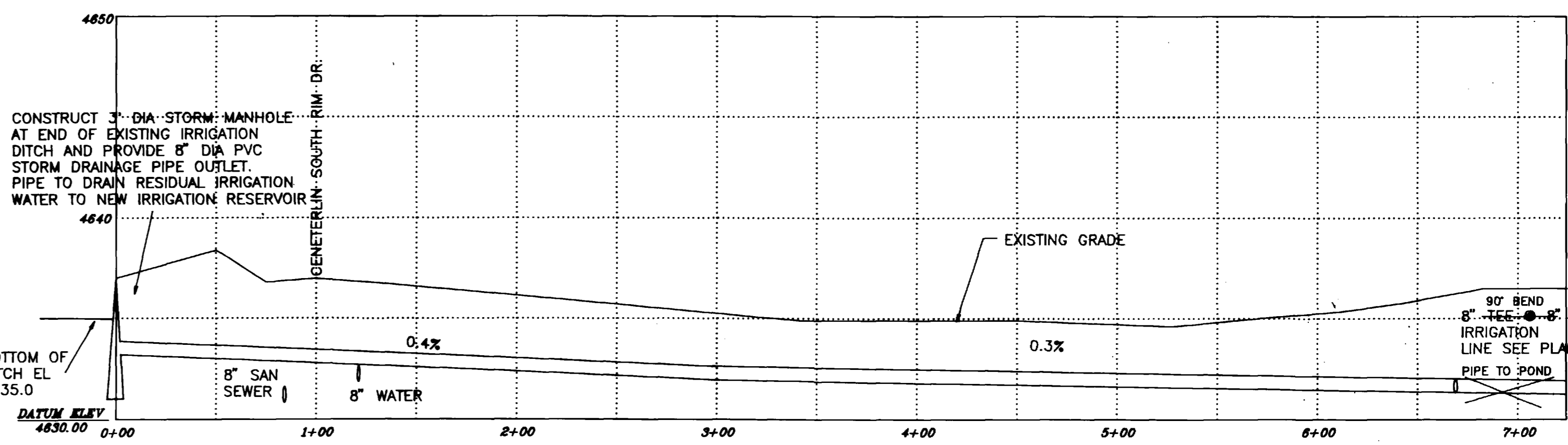


PROFILE OF 8" PVC IRRIGATION SUPPLY LINE FROM NORTHWEST PROPERTY CORNER TO IRRIGATION RESERVOIR - SEE PLAN

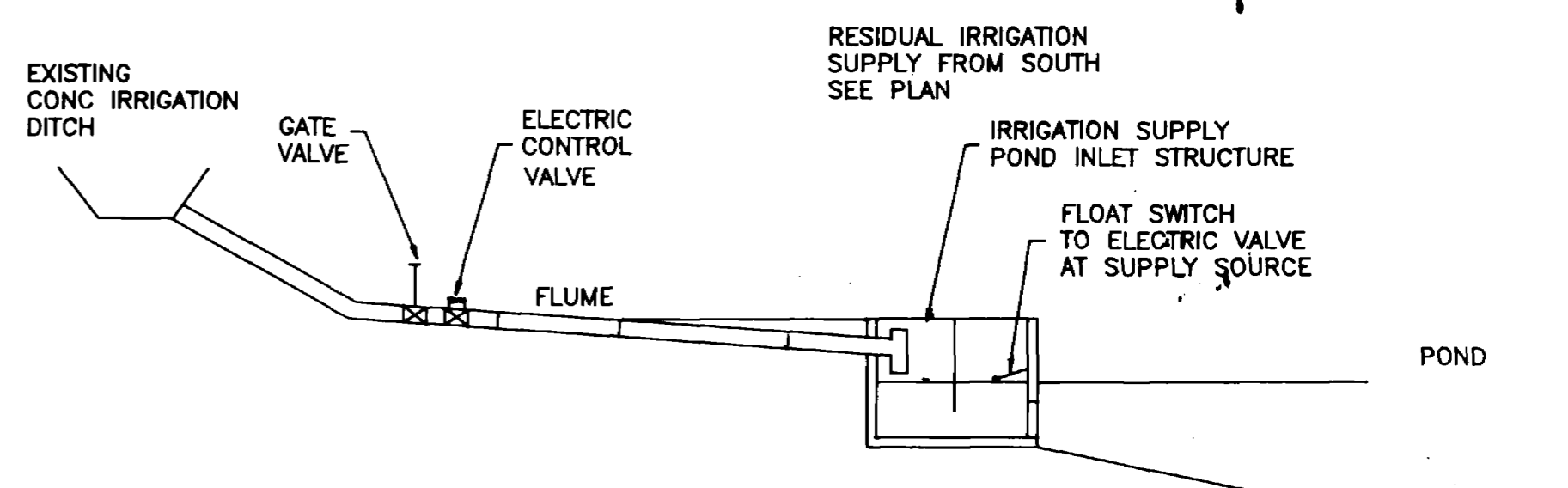
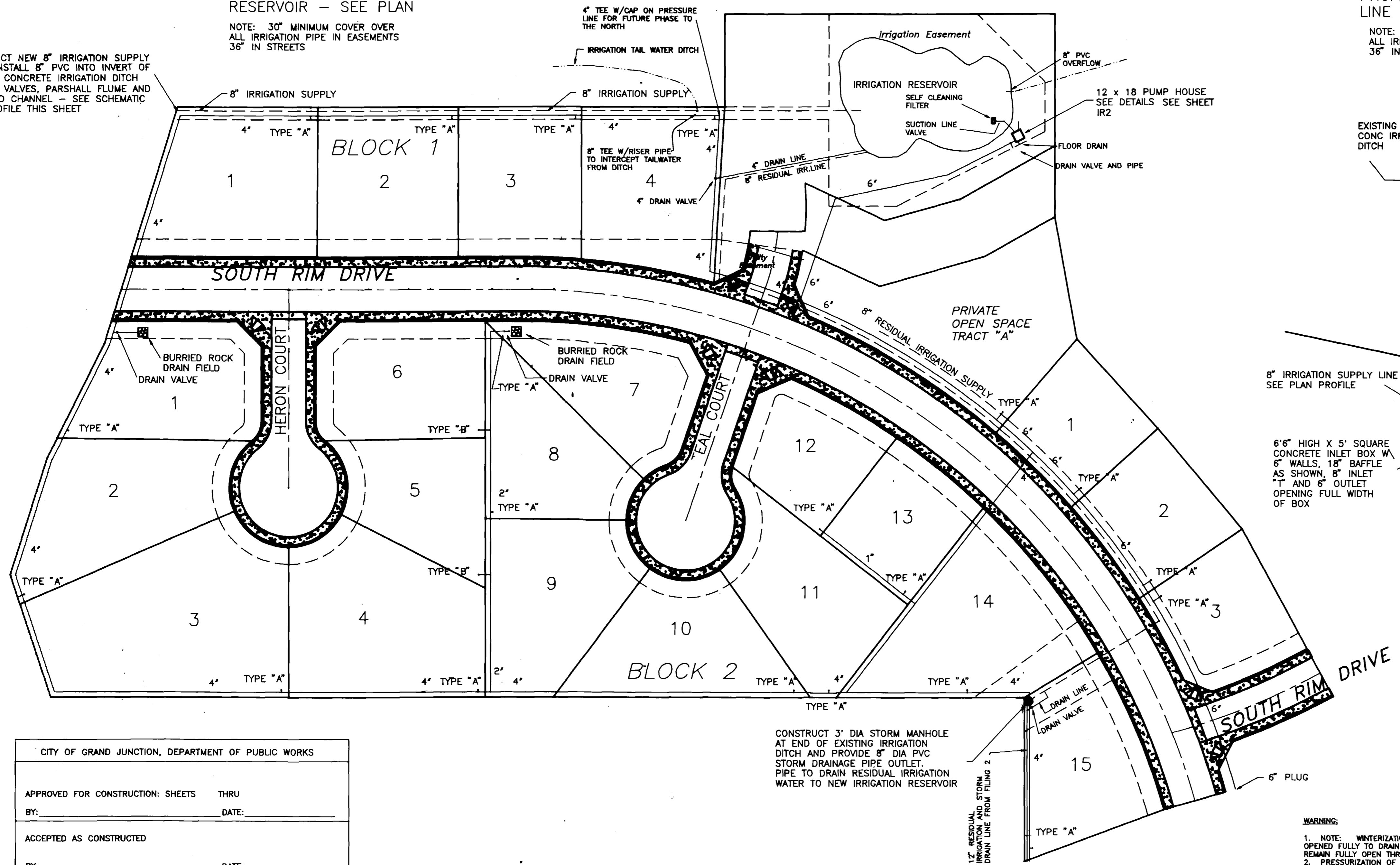
NOTE: 30" MINIMUM COVER OVER ALL IRRIGATION PIPE IN EASEMENTS 36" IN STREETS



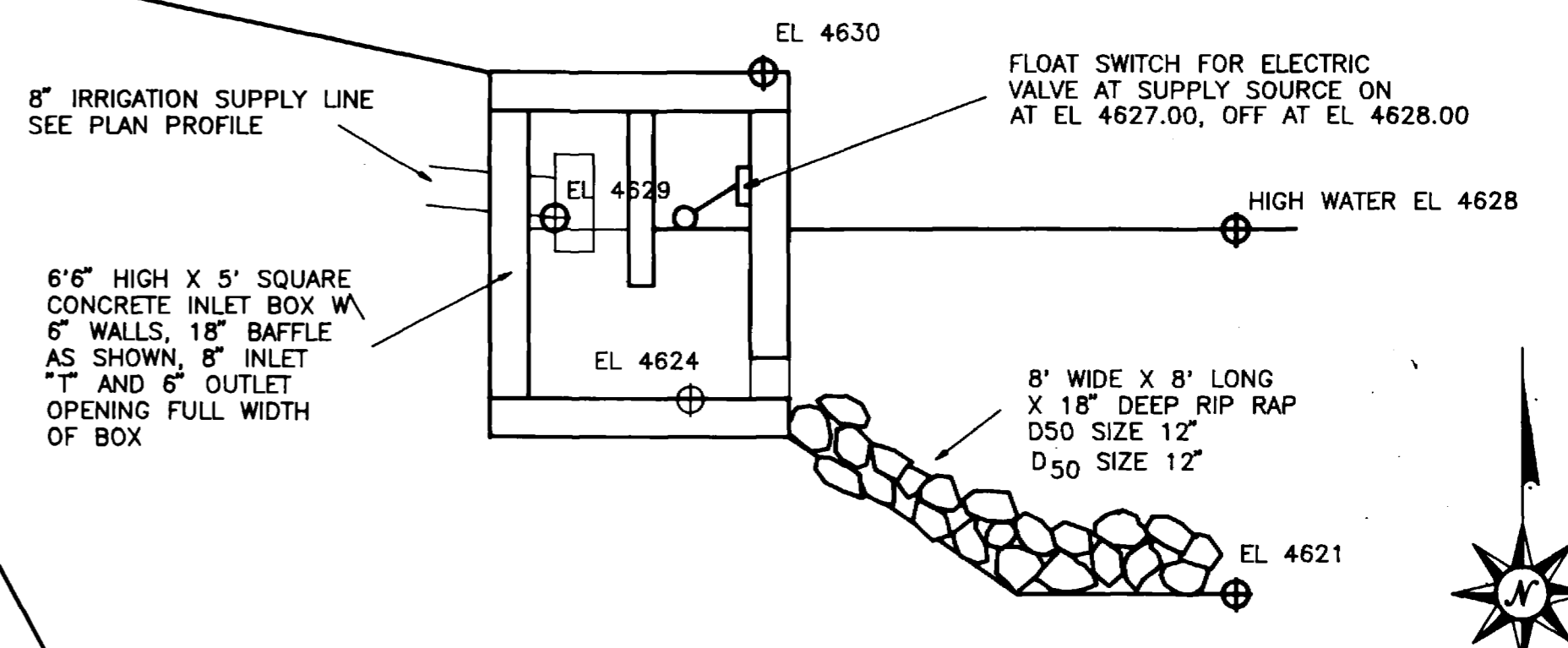
PROFILE OF 8" RESIDUAL IRRIGATION SUPPLY LINE FROM SOUTHERN BOUNDARY - SEE PLAN

NOTE: 30" MINIMUM COVER OVER ALL IRRIGATION PIPE IN EASEMENTS 36" IN STREETS

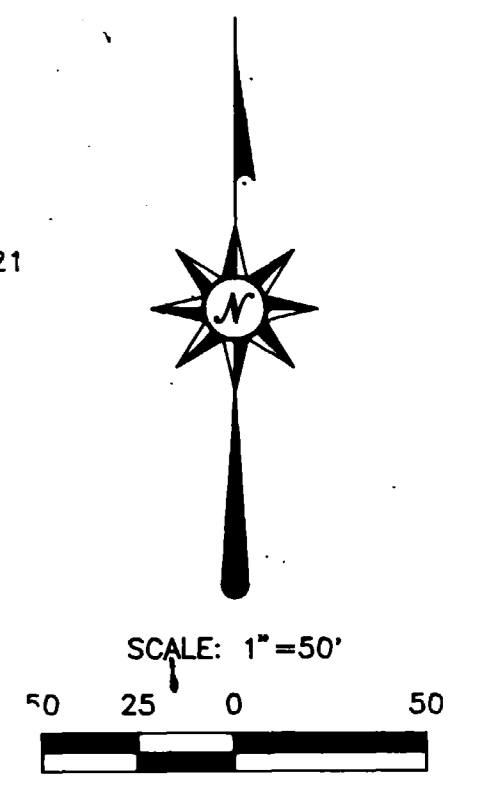
CONSTRUCT NEW 8" IRRIGATION SUPPLY LINE. INSTALL 8" PVC INTO INVERT OF EXISTING CONCRETE IRRIGATION DITCH PROVIDE VALVES, PARSHALL FLUME AND REQUIRED CHANNEL - SEE SCHEMATIC AND PROFILE THIS SHEET



IRRIGATION SUPPLY SCHEMATIC



IRRIGATION INLET SECTION



CITY OF GRAND JUNCTION, DEPARTMENT OF PUBLIC WORKS	
APPROVED FOR CONSTRUCTION: SHEETS	THRU
BY: _____	DATE: _____
ACCEPTED AS CONSTRUCTED	
BY: _____	DATE: _____

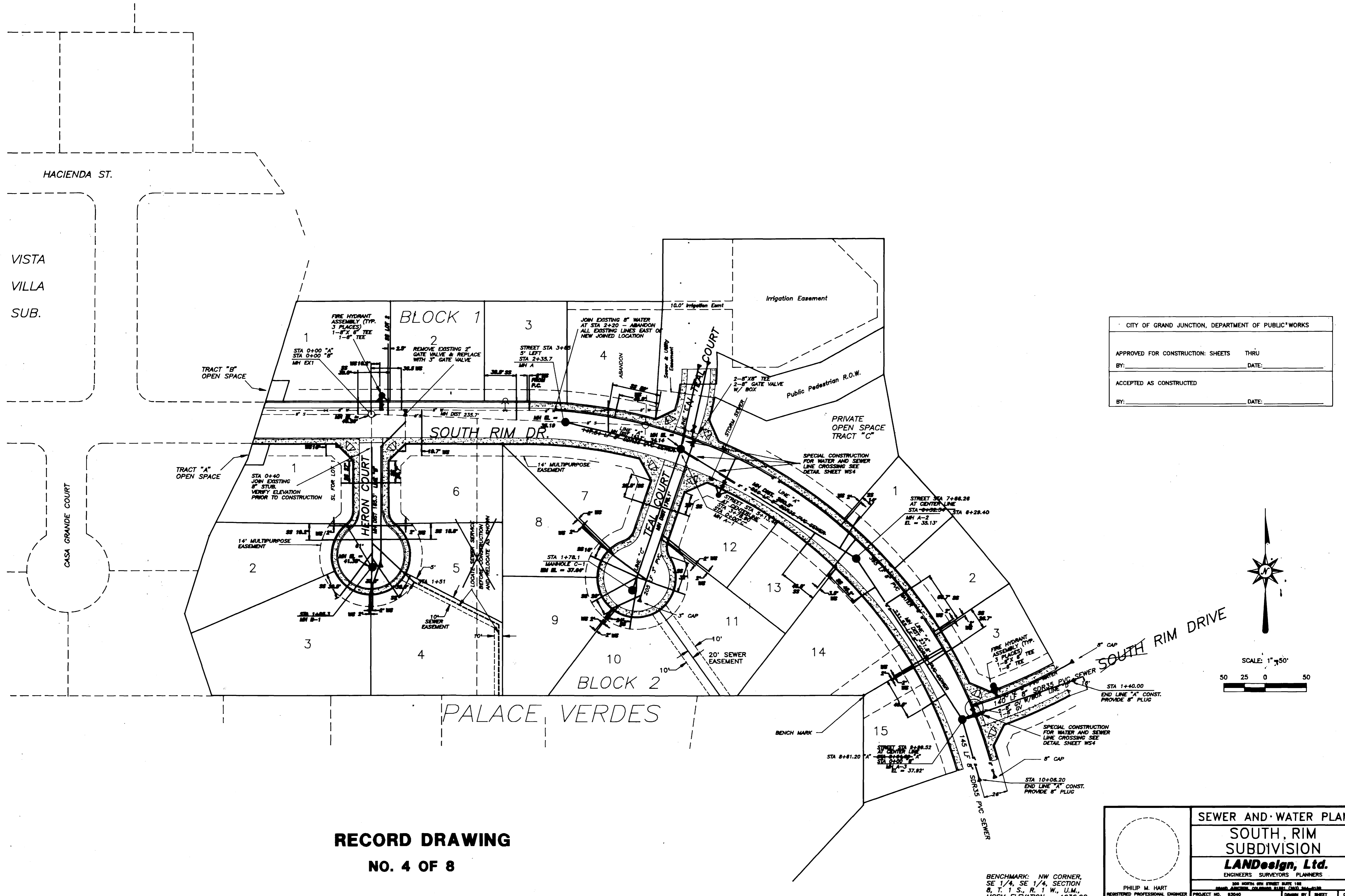
# RECORD DRAWING

## NO. 8 OF 8

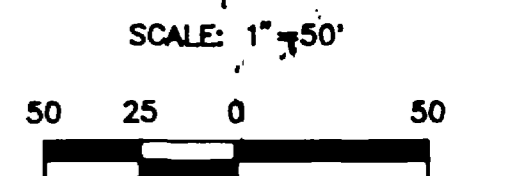
**WARNING:**  
 1. NOTE: WINTERIZATION: ALL DRAIN VALVES (4) ARE TO BE OPENED FULLY TO DRAIN SYSTEM. DRAIN VALVES ARE TO REMAIN FULLY OPEN THROUGH WINTER SEASON.  
 2. PRESSURIZATION OF SYSTEM: ALL DRAIN VALVES ARE TO BE FULLY CLOSED PRIOR TO PRESSURIZATION OF THE SYSTEM. FAILURE TO CLOSE VALVES COULD RESULT IN DAMAGE TO THE LINES AND OR AREAS AROUND DRAINS.

**SOUTH RIM SUBDIVISION**  
**LANDesign, Ltd.**  
 ENGINEERS SURVEYORS PLANNERS

	PHILIP M. HART REGISTERED PROFESSIONAL ENGINEER P.E. NO. 18346		
	PROJECT NO. 93040 DATE: OCTOBER, 1994	DRAWN BY: JOS SHEET: IR-1	OF: 8



CITY OF GRAND JUNCTION, DEPARTMENT OF PUBLIC WORKS	
APPROVED FOR CONSTRUCTION: SHEETS	THRU
BY: _____	DATE: _____
ACCEPTED AS CONSTRUCTED	
BY: _____	DATE: _____



**RECORD DRAWING**  
**NO. 4 OF 8**

BENCHMARK: NW CORNER,  
SE 1/4, SE 1/4, SECTION  
8, T. 1 S., R. 1 W., U.M.,  
MCSM ELEVATION = 4636.90

	<b>SEWER AND WATER PLAN</b>	
	<b>SOUTH RIM SUBDIVISION</b>	
	<b>LANDesign, Ltd.</b>	
<small>ENGINEERS SURVEYORS PLANNERS</small>		
<small>300 NORTH 9TH STREET SUITE 102 GRAND JUNCTION, COLORADO 81501 CHED 244-6100</small>		
<small>PROJECT NO. 83040</small>	<small>DRAWN BY</small>	<small>SHEET</small>
<small>DATE: SEPTEMBER, 1994</small>	<small>JOB</small>	<small>WS-1</small>

Re 11-10-94  
B.M. Casey  
02097902.tif