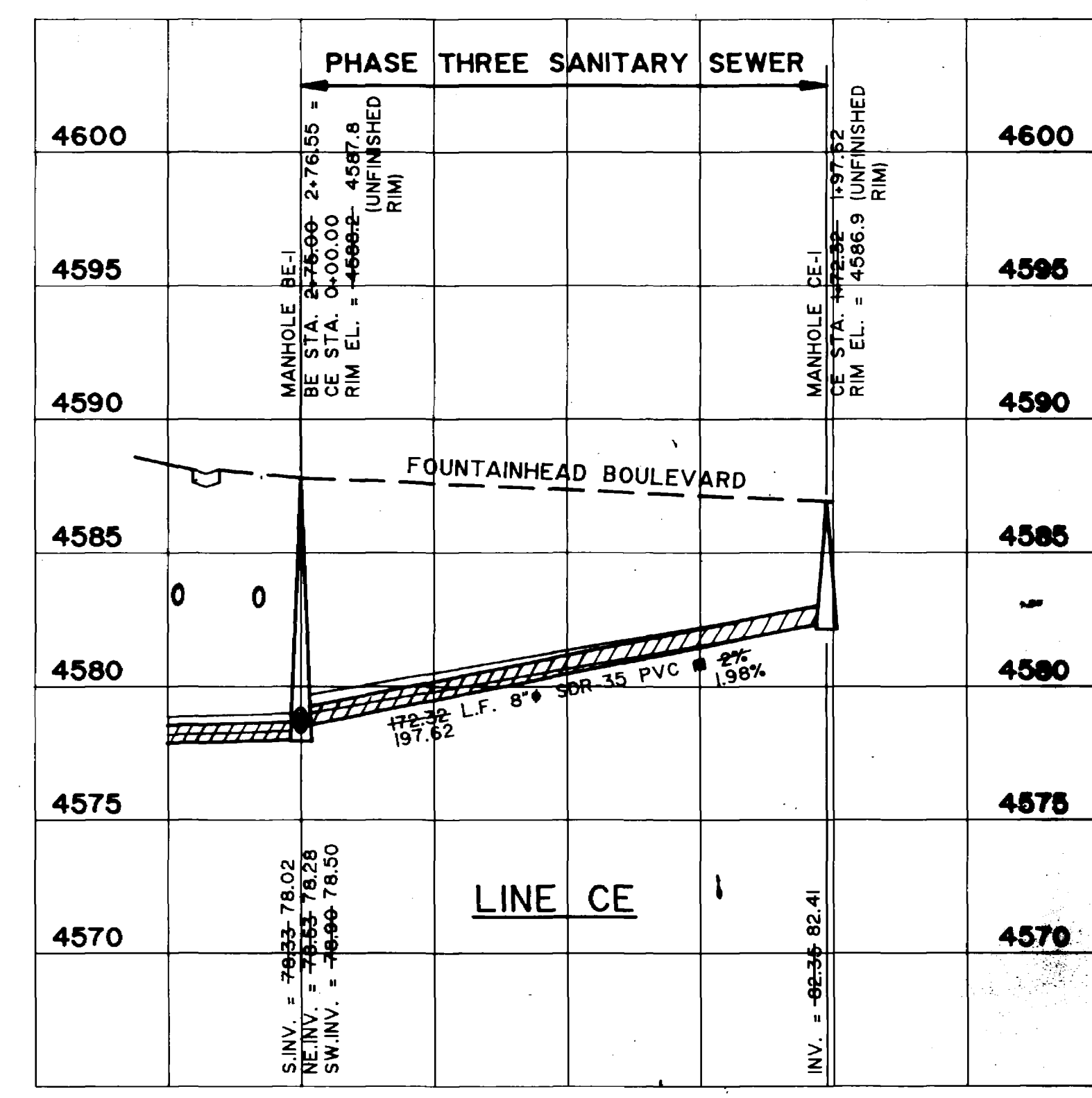
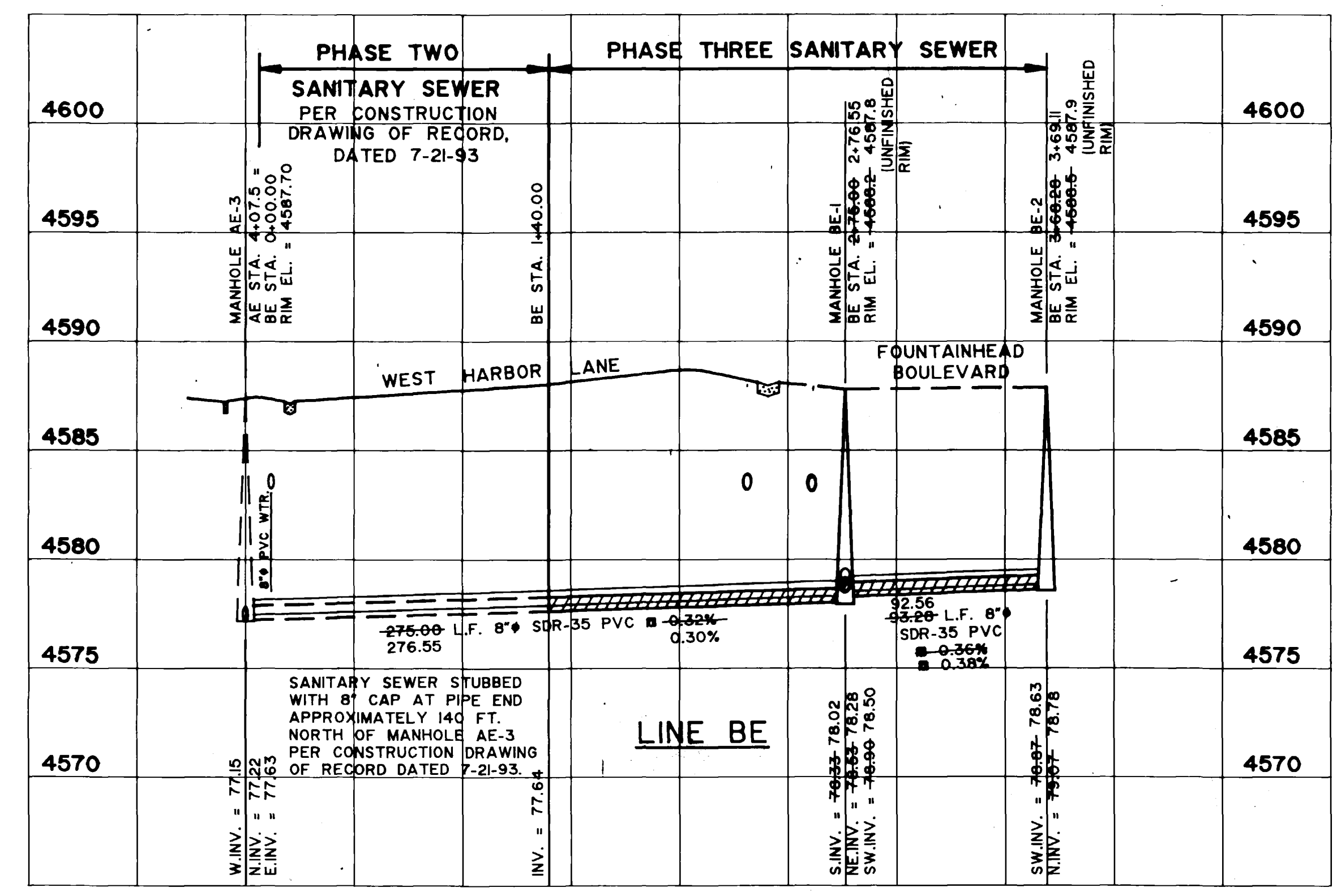
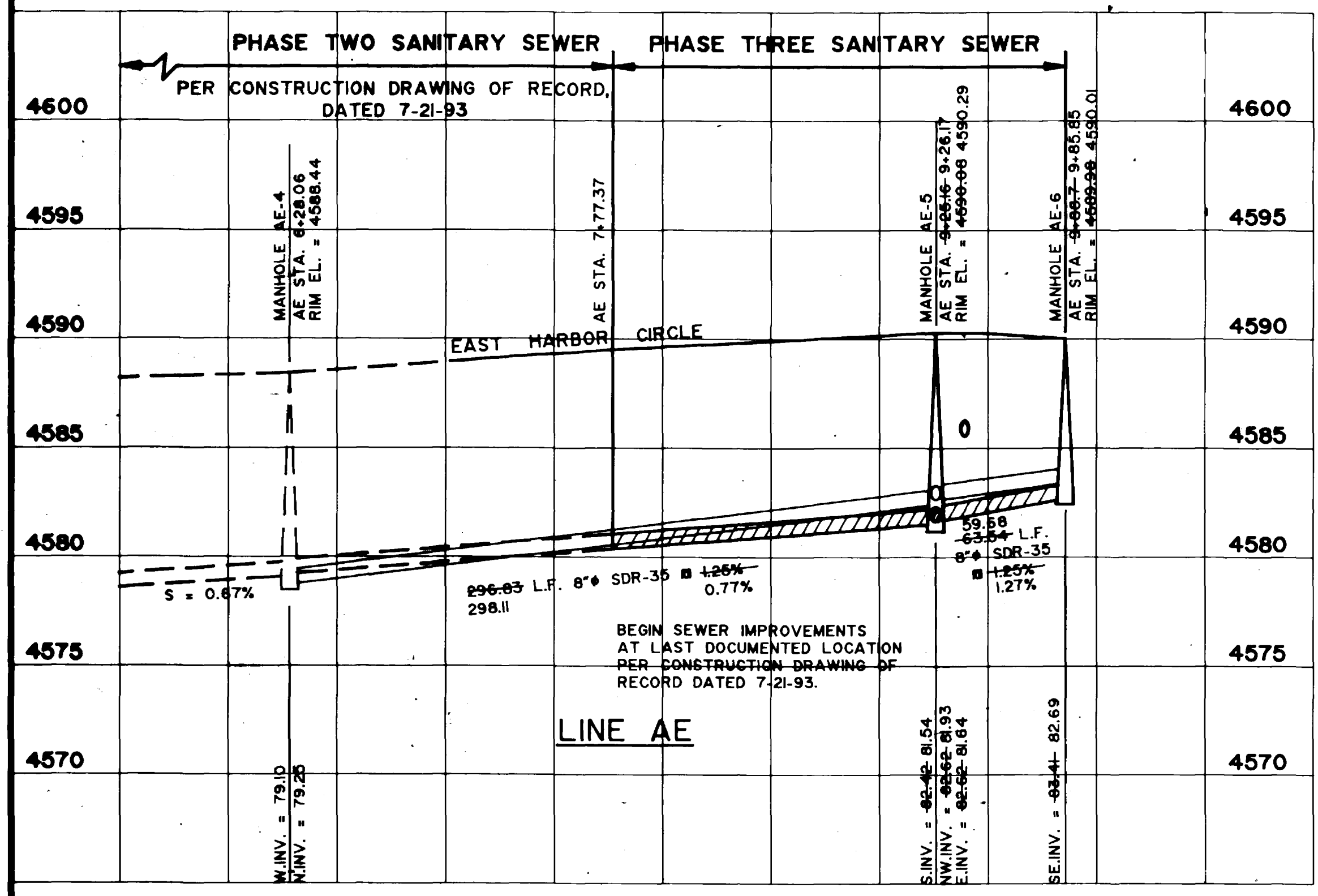
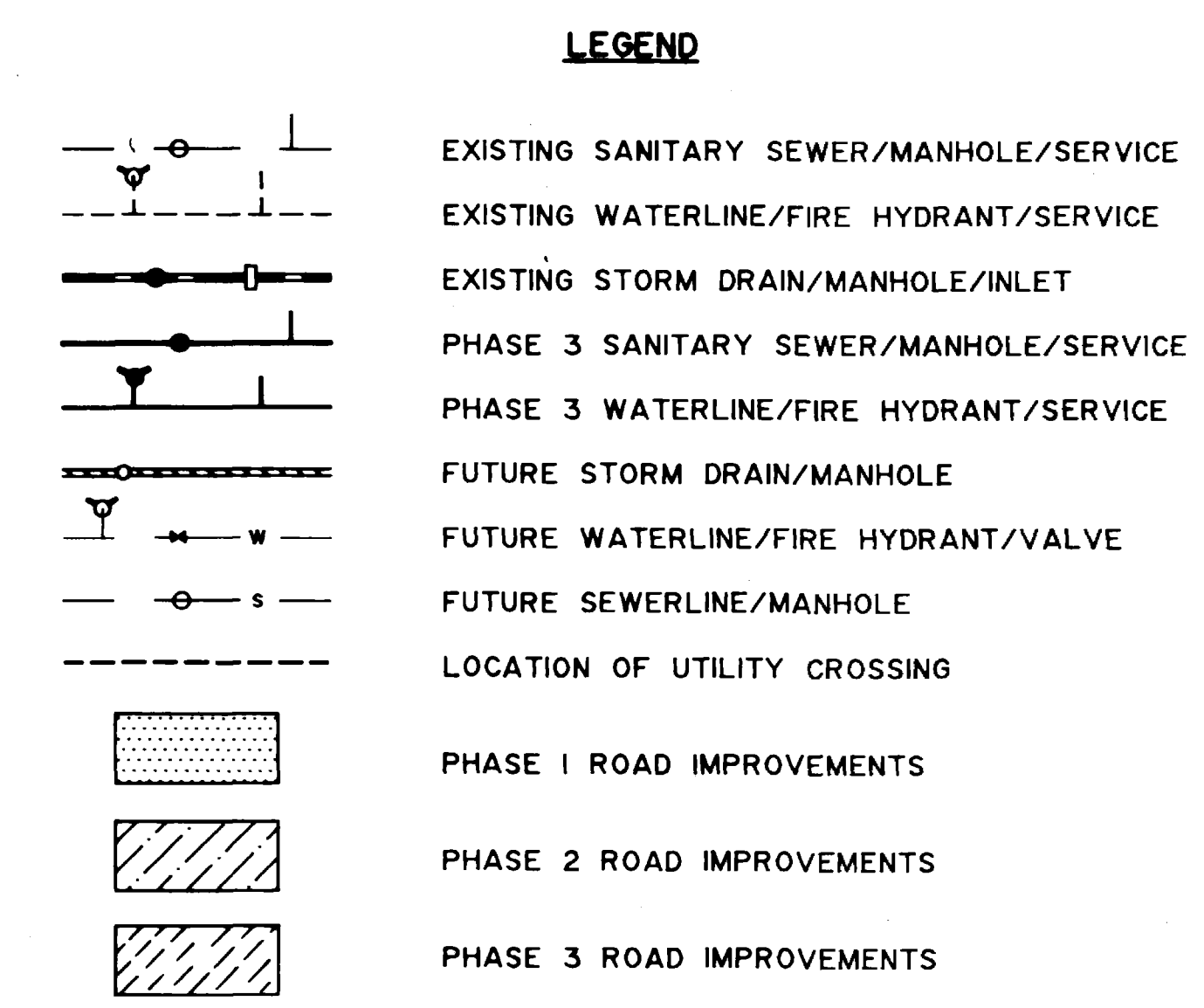
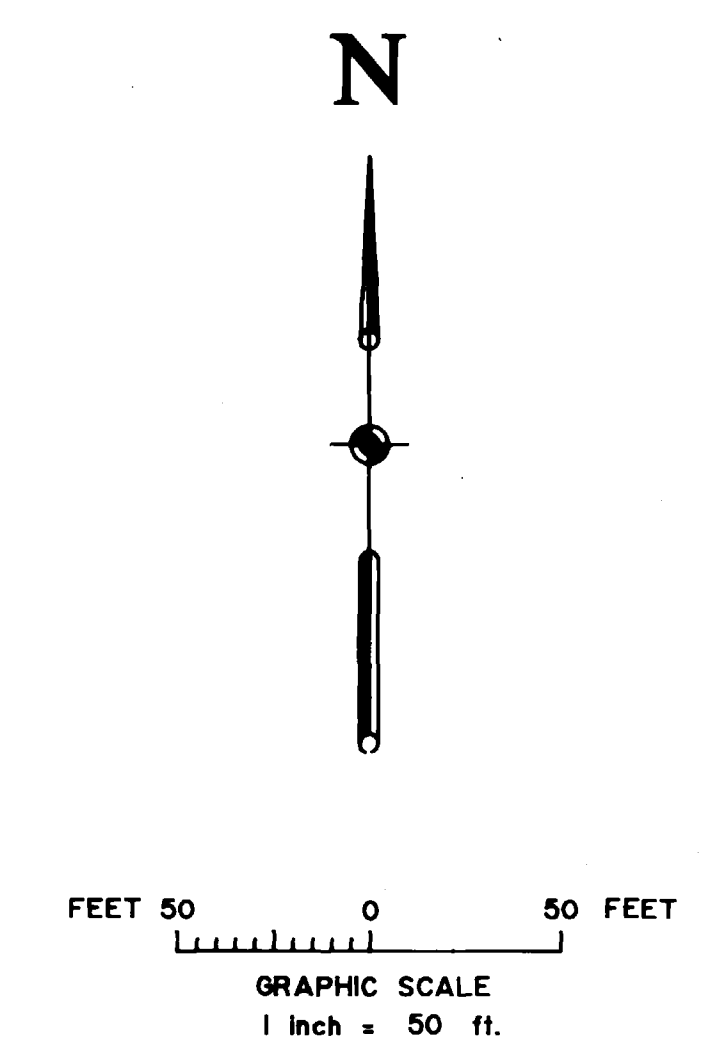
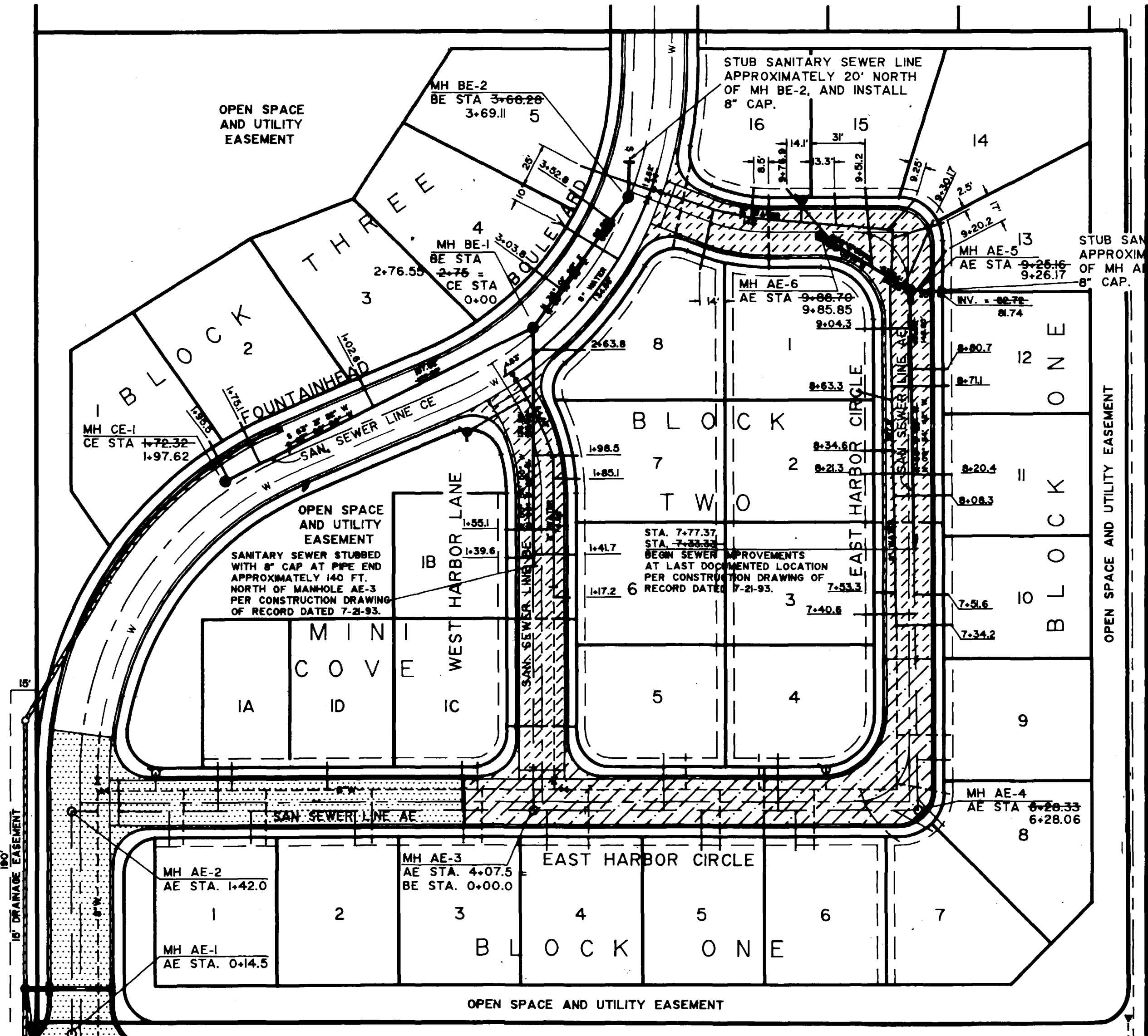


CONSTRUCTION DRAWING OF RECORD

ENGINEERS STATEMENT

Banner Associates, Inc. reviewed the construction of the Phase Utility Improvements at Fountainhead Subdivision as shown on this plan and that to the best of our knowledge it conforms to the City of Grand Junction Standards and Specifications.

Banner Associates, Inc.



AE 6+00	AE 8+00	AE 10+00	BE 0+00	BE 2+00	BE 4+00	CE 0+00	CE 2+00
---------	---------	----------	---------	---------	---------	---------	---------

DRAWN BY: JCS	REVIEWED _____ DATE _____ FOR _____
CHECKED BY: DEC	REVIEWED _____ DATE _____ FOR BANNER ASSOCIATES, INC.

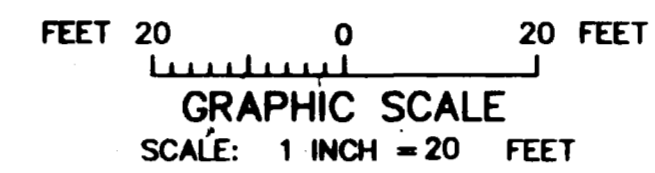


BANNER
BANNER ASSOCIATES, INC. • CONSULTING ENGINEERS & SURVEYORS
2777 CROSSROADS BOULEVARD • GRAND JUNCTION, CO 81506 • (303) 243-2242
605 E. MAIN • SUITE 6 • ASPEN, CO 81611 • (303) 925-5857

REVISION	DATE	DESCRIPTION	BY	CHKD
1	12-01-93	GENERATE CONST DWG OF RECORD	JCS	DEC

FOUNTAINHEAD DEVELOPMENT CORP.	GRAND JUNCTION, COLO.	SCALE: HORIZ: 1" = 50' VERT: 1" = 5'	Project No: 8229-06
FOUNTAINHEAD SUBDIVISION PHASE 3 UTILITY IMPROVEMENTS		DATE: 12-9-93	SHEET NO: 1 of 1

CONSTRUCTION DRAWING OF RECORD



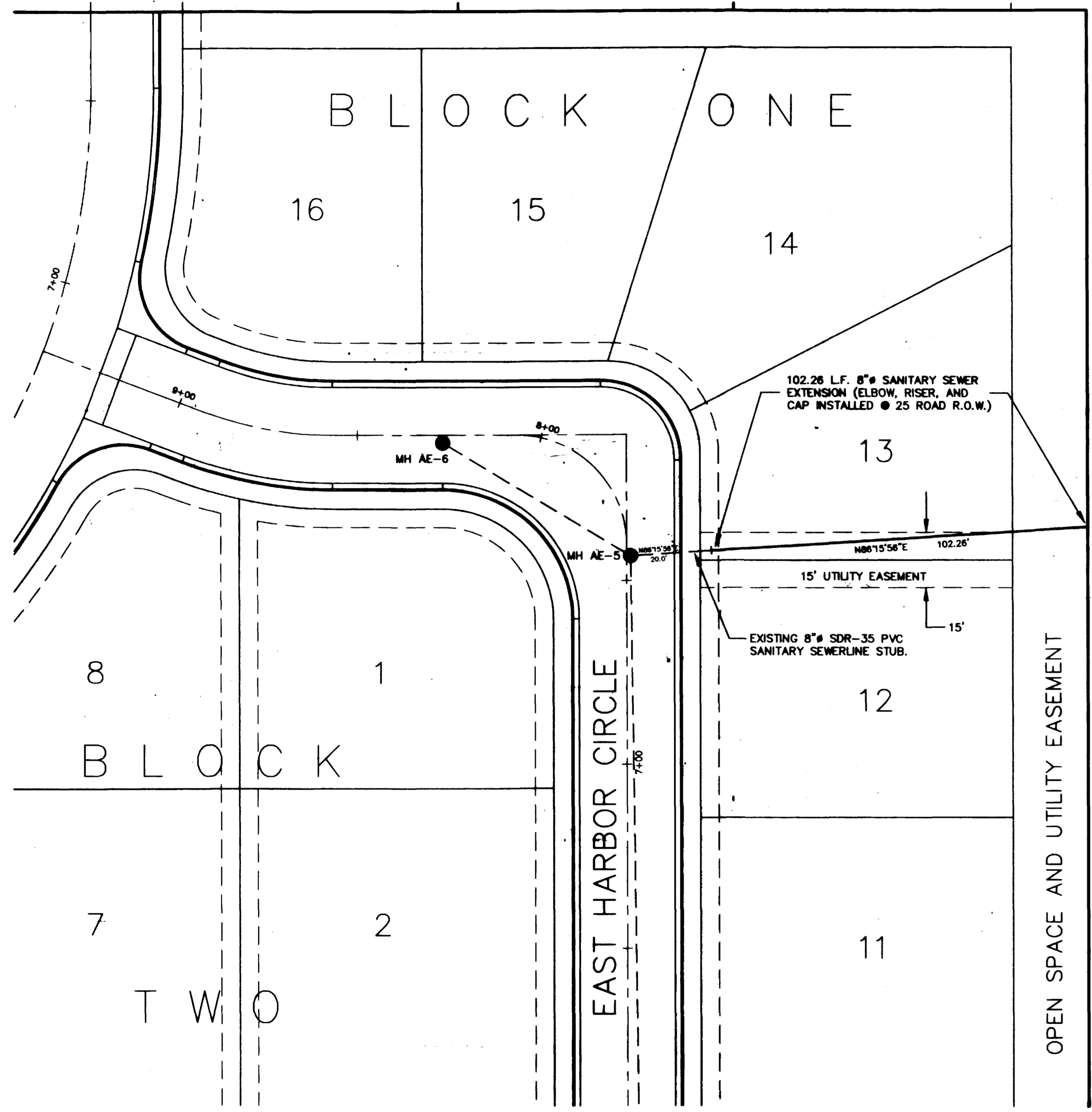
ENGINEERS STATEMENT

Banner Associates, Incorporated prepared this drawing to reflect the as-constructed location of the Phase 3 Sanitary Sewer Extension at Fountainhead Subdivision.

Banner Associates, Inc.

LEGEND

- EXISTING SANITARY SEWER/MANHOLE
- PHASE 3 SANITARY SEWER EXTENSION



25 ROAD

OPEN SPACE AND UTILITY EASEMENT

	PHASE THREE SANITARY SEWER PER CONSTRUCTION DRAWING OF RECORD, DATED 12-9-93	PHASE THREE SANITARY SEWER EXTENSION	
4600			4600
4595	MANHOLE AE-5 AE STA. 8+26.17 = EXT. STA. 0+00.00 RIM EL. = 4390.29		4595
4590		90° ELBOW AND RISER INSTALLED AT END OF PIPE FOR LOCATION PURPOSES ONLY.	4590
4585			4585
4580	S. INV. = 81.54 I.W. INV. = 81.93 E. INV. = 81.04	S=0.50% 102.26 L.F. 8" SDR-35 PVC @ 0.84% EXT. STA. 0+20.00	4580
4575		EXT. STA. 1+22.26 INV. = 82.80	4575
0+00		1+00	



Aspen Council
Engineers Council
Member



BANNER ASSOCIATES, INC. • CONSULTING ENGINEERS & SURVEYORS
2777 CROSSROADS BOULEVARD • GRAND JUNCTION, CO 81506 • (303) 243-2242
605 E. MAIN • SUITE 6 • ASPEN, CO 81611 • (303) 925-5867

REVISION	DATE	DESCRIPTION	BY	CHKD

FOUNTAINHEAD DEVELOPMENT CORP.
FOUNTAINHEAD SUBDIVISION, SANITARY SEWER EXTENSION
BETWEEN LOTS 12/13, BLOCK ONE

GRAND JUNCTION, COLORADO

SCALE: HORIZ: 1" = 20' VERT: 1" = 5'	Project No: 8229-00
DATE: 10/3/94	SHEET NO: 1 of 1