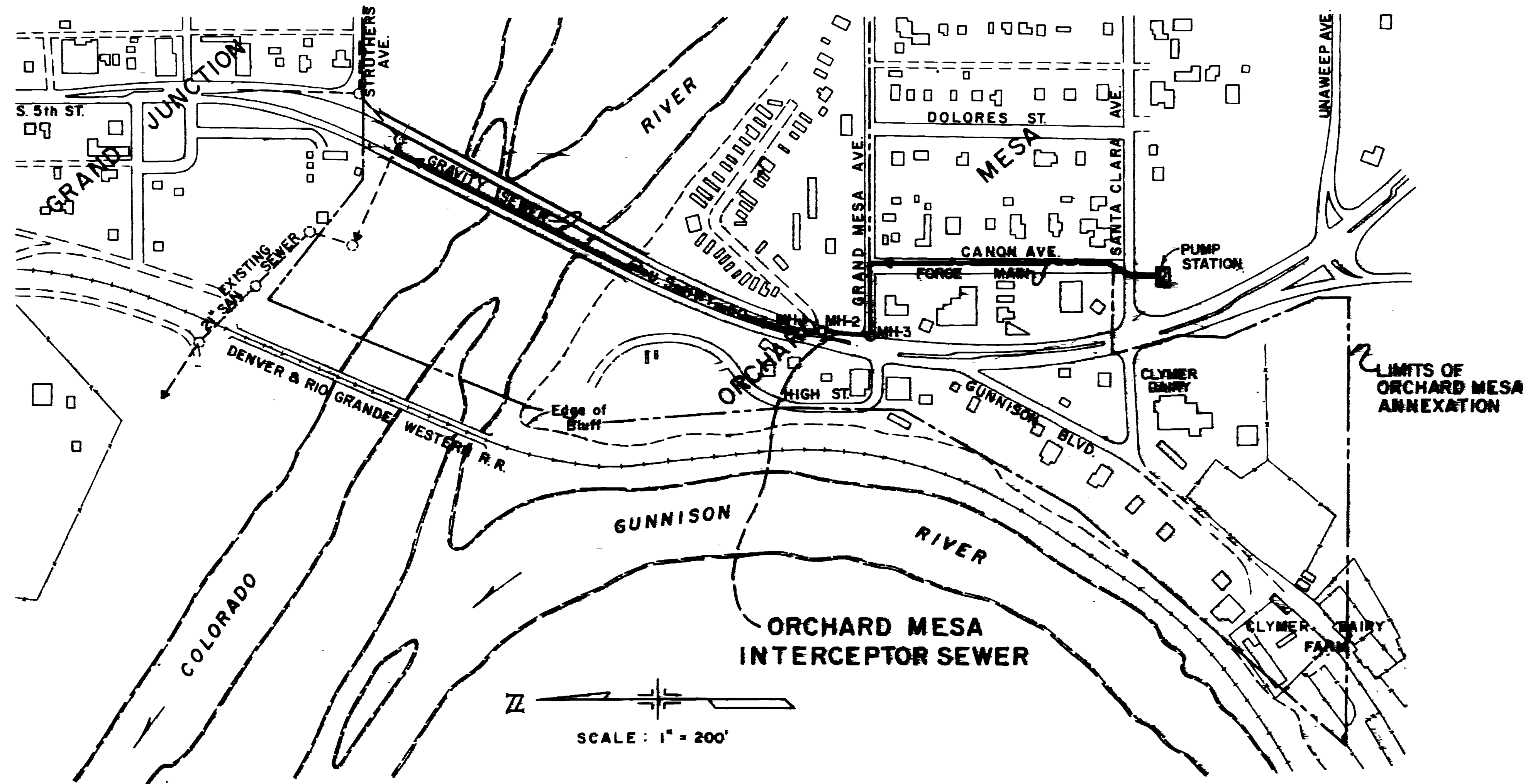


SEWER SYSTEM IMPROVEMENTS GRAND JUNCTION, COLORADO

ORCHARD MESA INTERCEPTOR SEWER PUMP STATION & FORCE MAIN

1969



INDEX OF DRAWINGS

Sheet No.	Title
1	PLAN & PROFILE Sta. 0+00 to Sta. 15+00
2	PLAN & PROFILE Sta. 15+00 to Sta. 24+50
3	MISCELLANEOUS DETAILS

FILED WITH THE CITY OF GRAND JUNCTION, COLORADO
AUGUST 6, 1969
SUBMITTED: _____
HENNINGSON, DURHAM & RICHARDSON INC

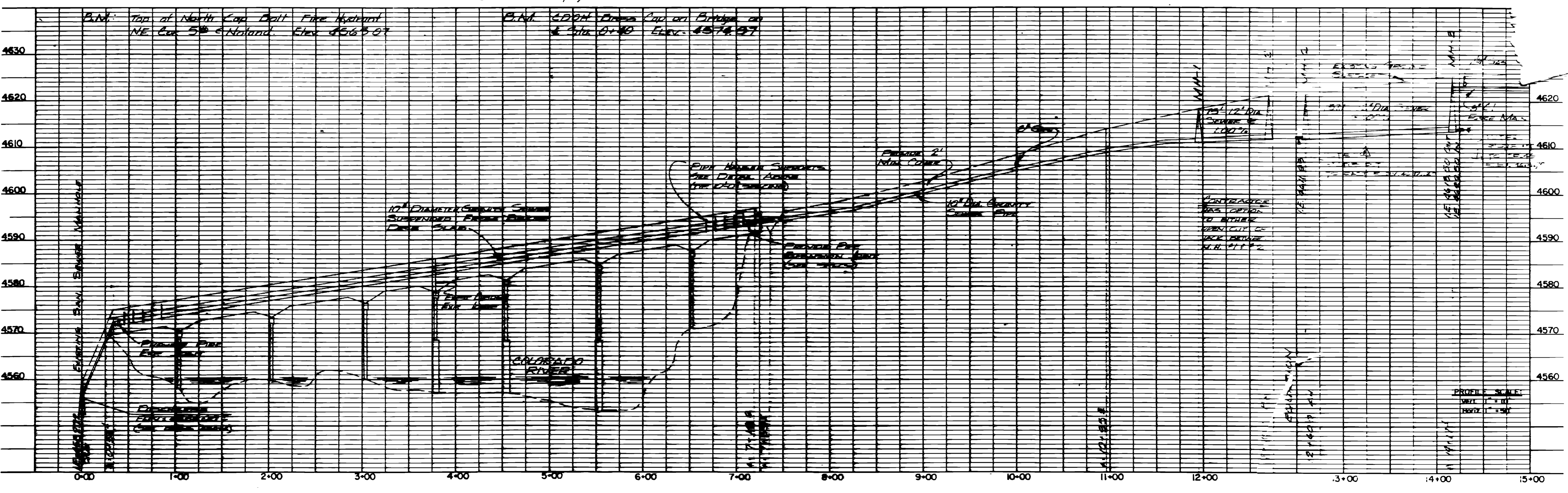
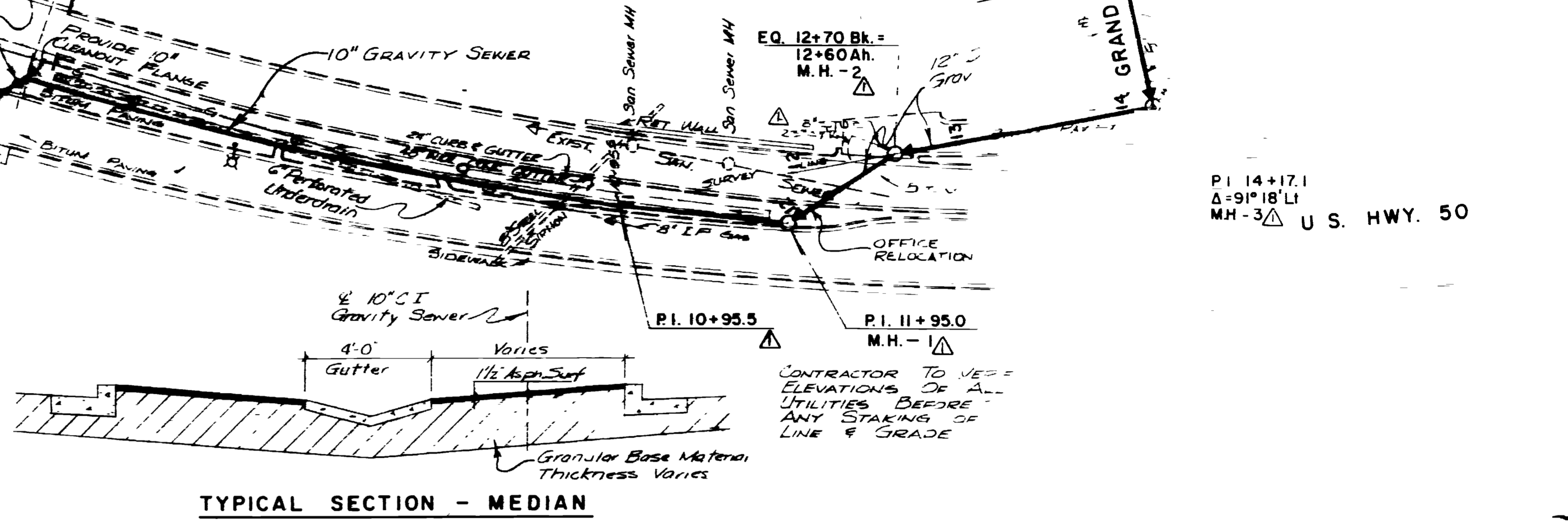
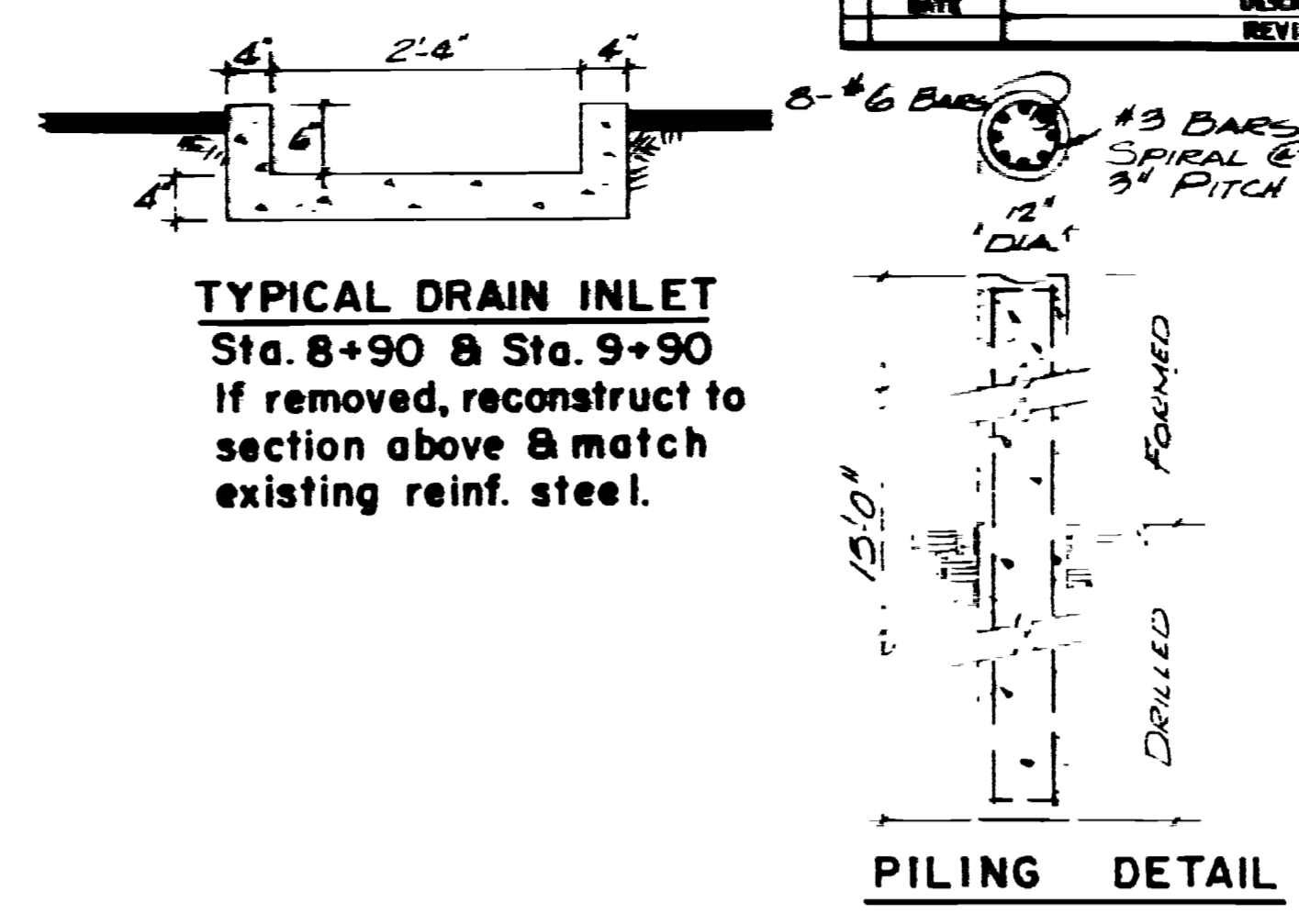
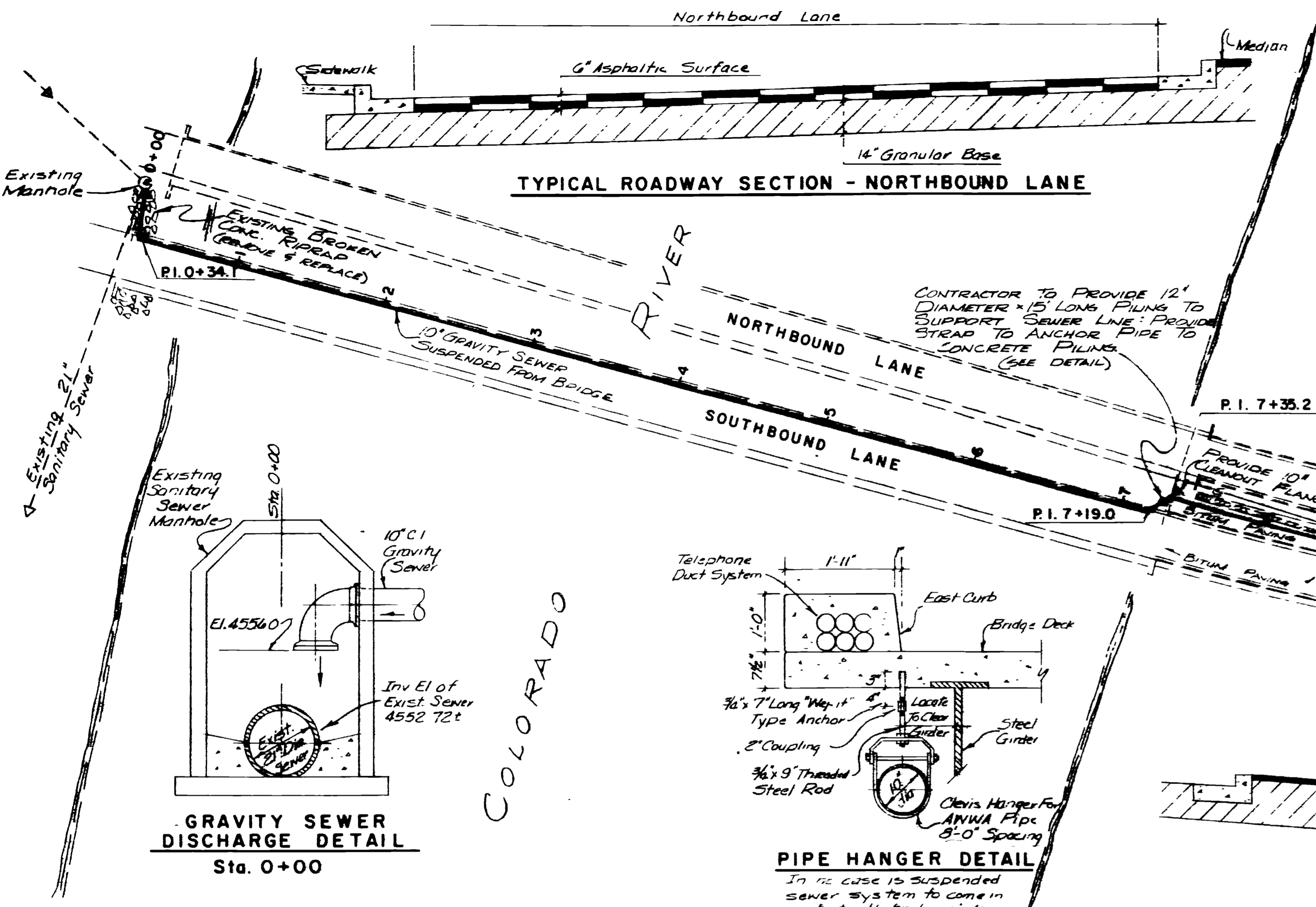
HENNINGSON, DURHAM & RICHARDSON
ENGINEERS • PLANNERS • CONSULTANTS
DENVER

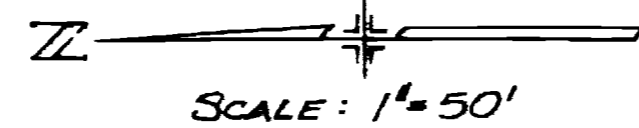
**SEWER SYSTEM IMPROVEMENTS
GRAND JUNCTION, COLORADO**

**ORCHARD MESA INTERCEPTOR SEWER
PUMP STATION & FORCE MAIN
PLAN and PROFILE**
STA. 0+00 to STA. 15+00

HINNINGSON, DURHAM & RICHARDSON, INC.
ENGINEERS - PLANNERS - CONSULTANTS
211 W. 10TH AVENUE, DENVER, COLORADO

JOB NO. 733110	DESIGNED E. A. B.	CHECKED K. D. H.	SHEET 1 OF 3
DATE 7-28-69	APPROVED W. L. B.	DATE 7-28-69	
DETAILED W. C. G.			





DATE	DESCRIPTION	MADE	APPROV
7-28-69	DESIGNED	E.A.B.	
	CHECKED	K.O.H.	
	APPROVED	W.L.B.	
	DATE	7-28-69	

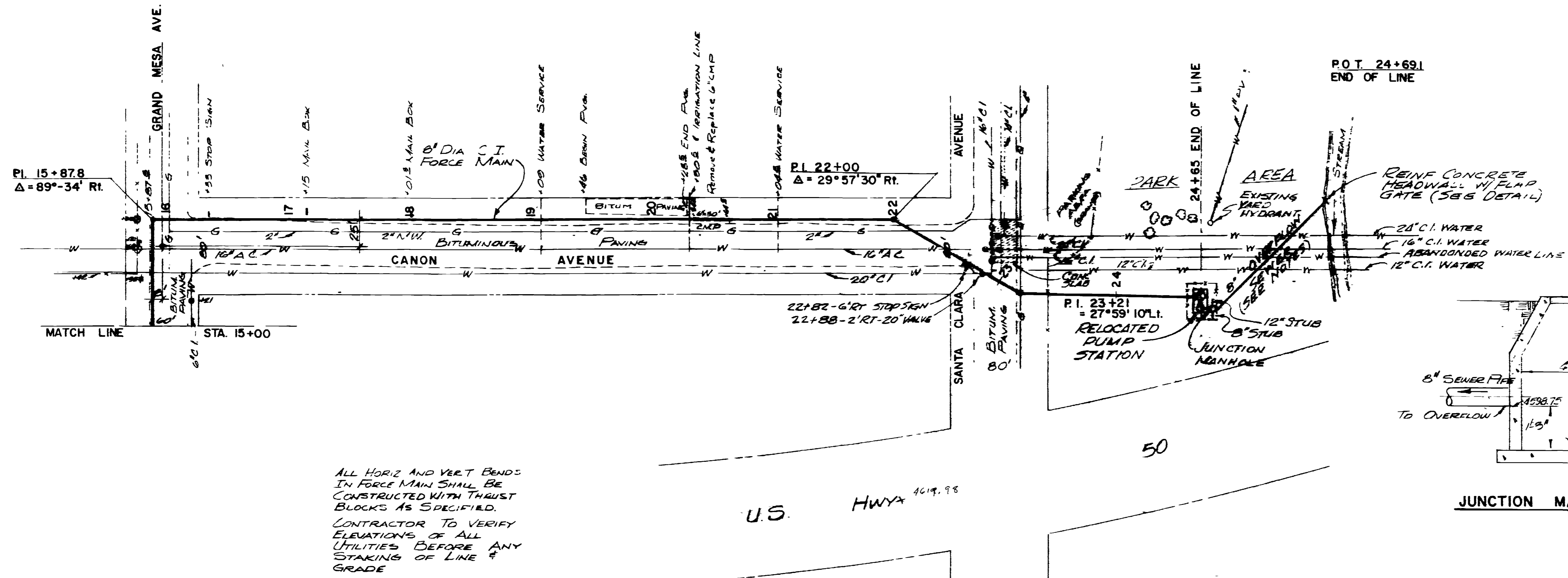
**SEWER SYSTEM IMPROVEMENTS
GRAND JUNCTION, COLORADO**

**ORCHARD MESA INTERCEPTOR SEWER
PUMP STATION & FORCE MAIN
PLAN and PROFILE**
STA. 15+00 to STA. 24+50

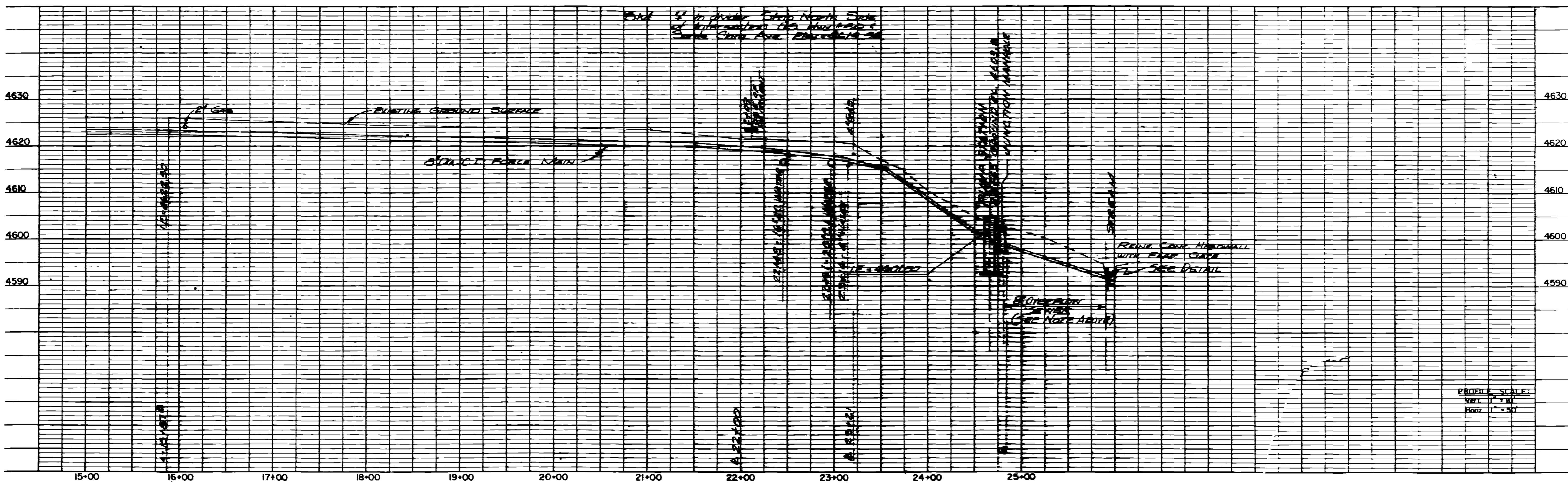
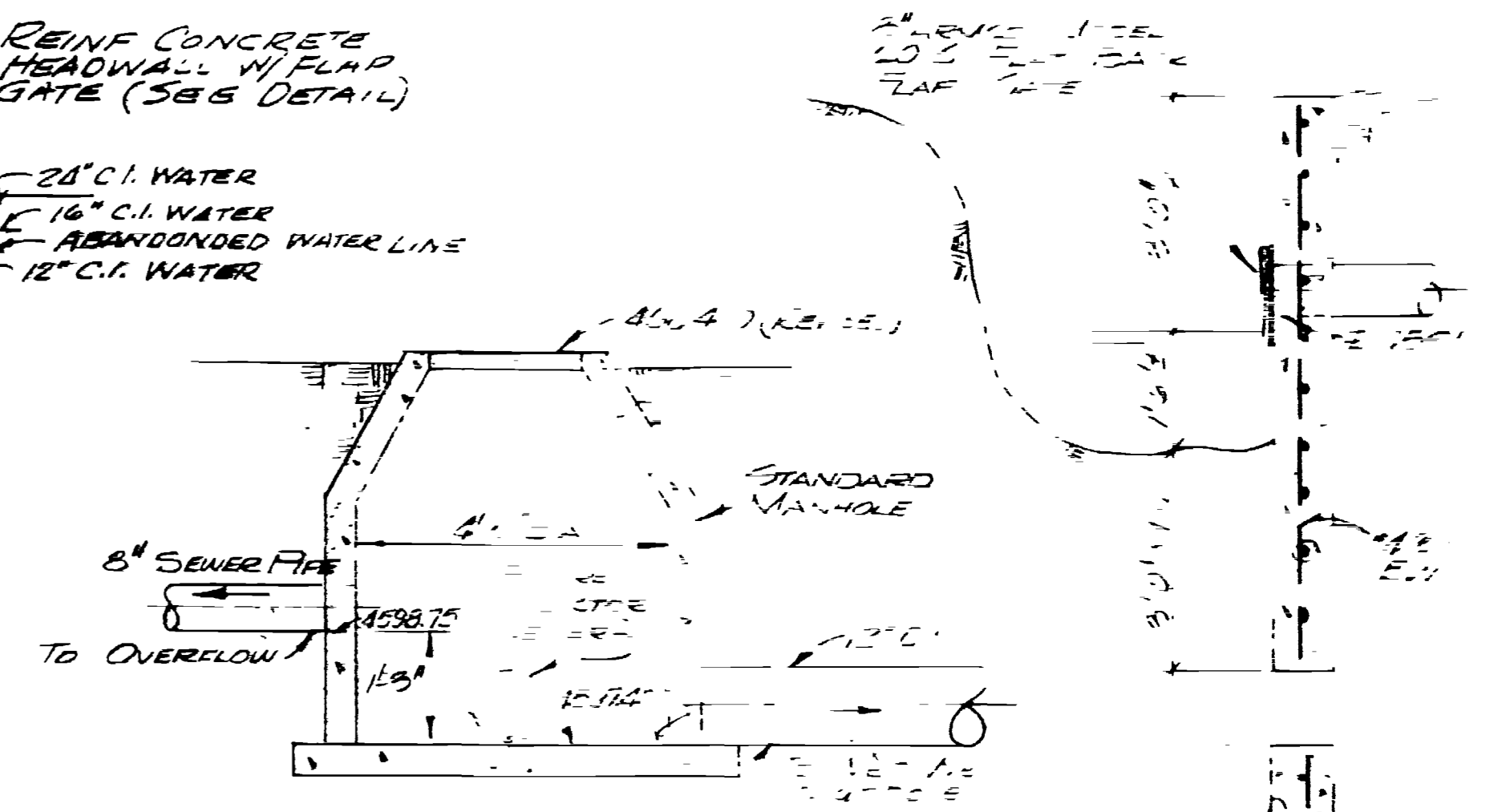
HENNINGSON, DURHAM & RICHARDSON, INC.
ENGINEERS • PLANNERS • CONSULTANTS
DENVER, COLORADO

JOB	DESIGNED	E.A.B.	CHECKED	K.O.H.	SHEET
733110	DATE	7-28-69	APPROVED	W.L.B.	2 OF 3
	DETAILS	W.C.G.			

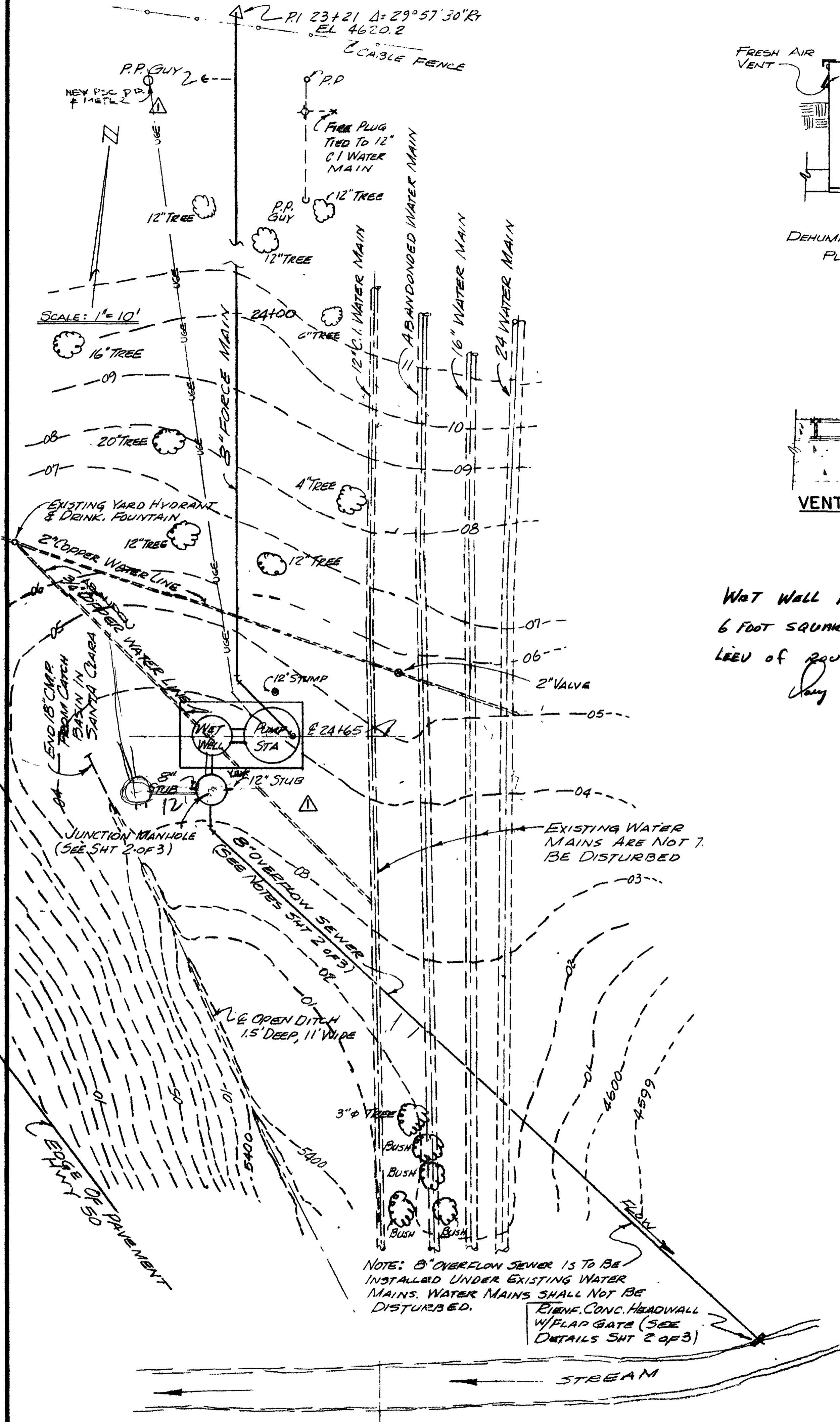
- NOTES**
1. FIELD ENGINEER IS TO DETERMINE GRADE & EXACT ALIGNMENT OF 8" OVERFLOW SEWER
 2. 8" OVERFLOW SEWER IS TO BE PLACED UNDER ALL EXISTING WATER MAINS



ALL HORIZ AND VERT BENDS IN FORCE MAIN SHALL BE CONSTRUCTED WITH THRUST BLOCKS AS SPECIFIED. CONTRACTOR TO VERIFY ELEVATIONS OF ALL UTILITIES BEFORE ANY STAKING OF LINE & GRADE

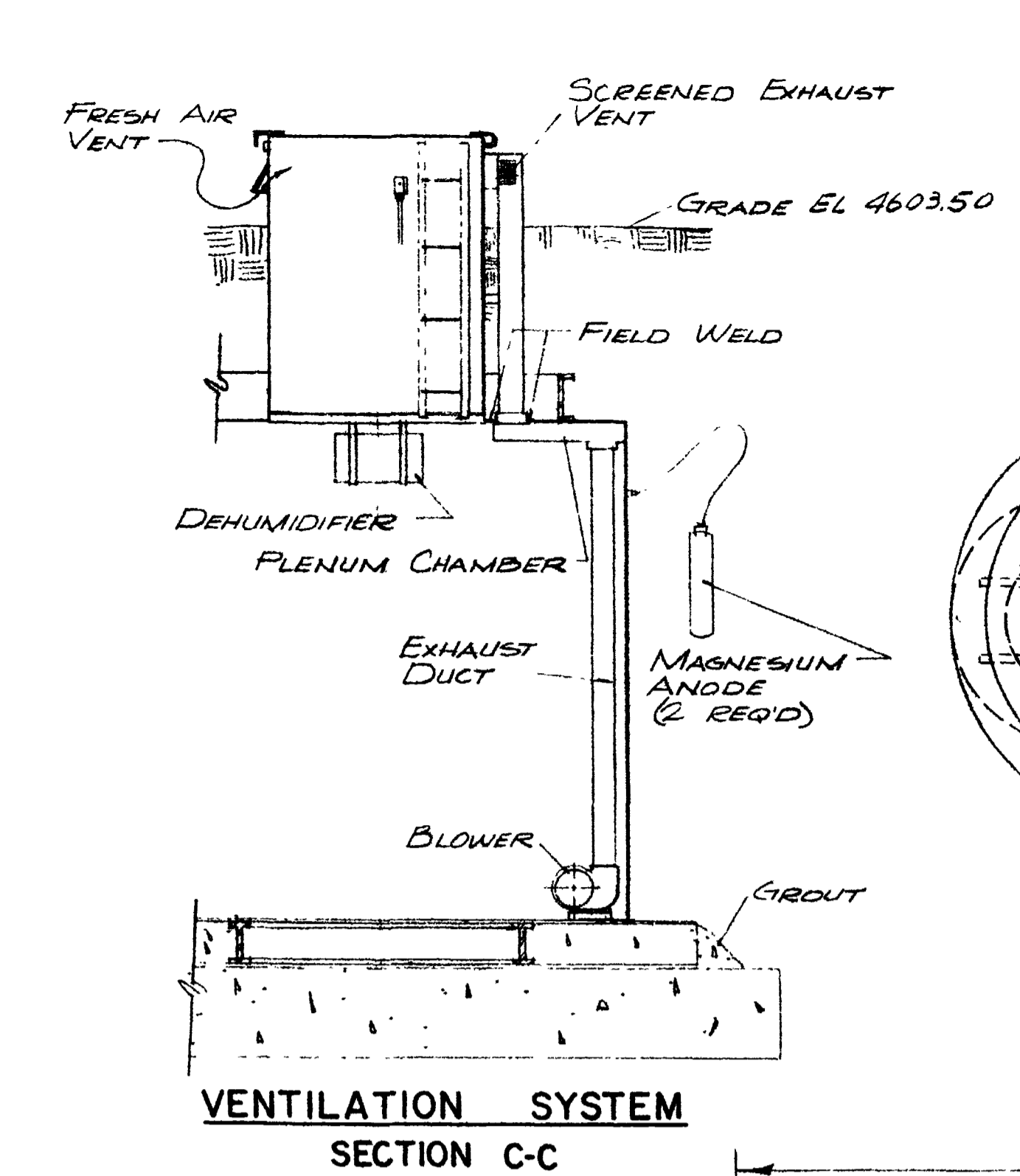


PROFILE SCALE:
VERT. 1" = 5'
HORIZ. 1" = 50'

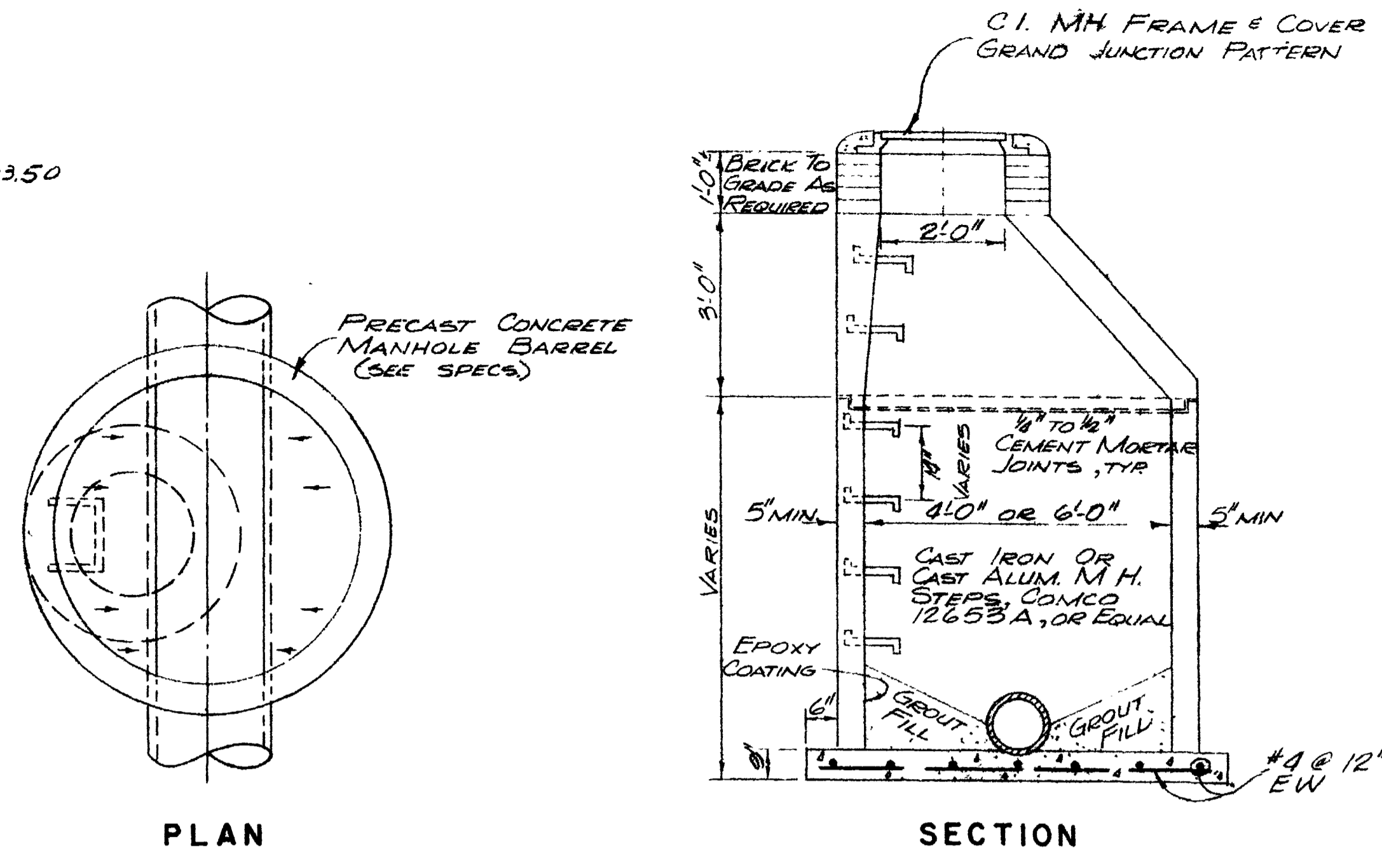


PUMP STATION SITE PLAN
1" = 10'

WET WELL APPEARS
6 FOOT SQUARE IN
LEE OF ROUND.
July 7-6-73

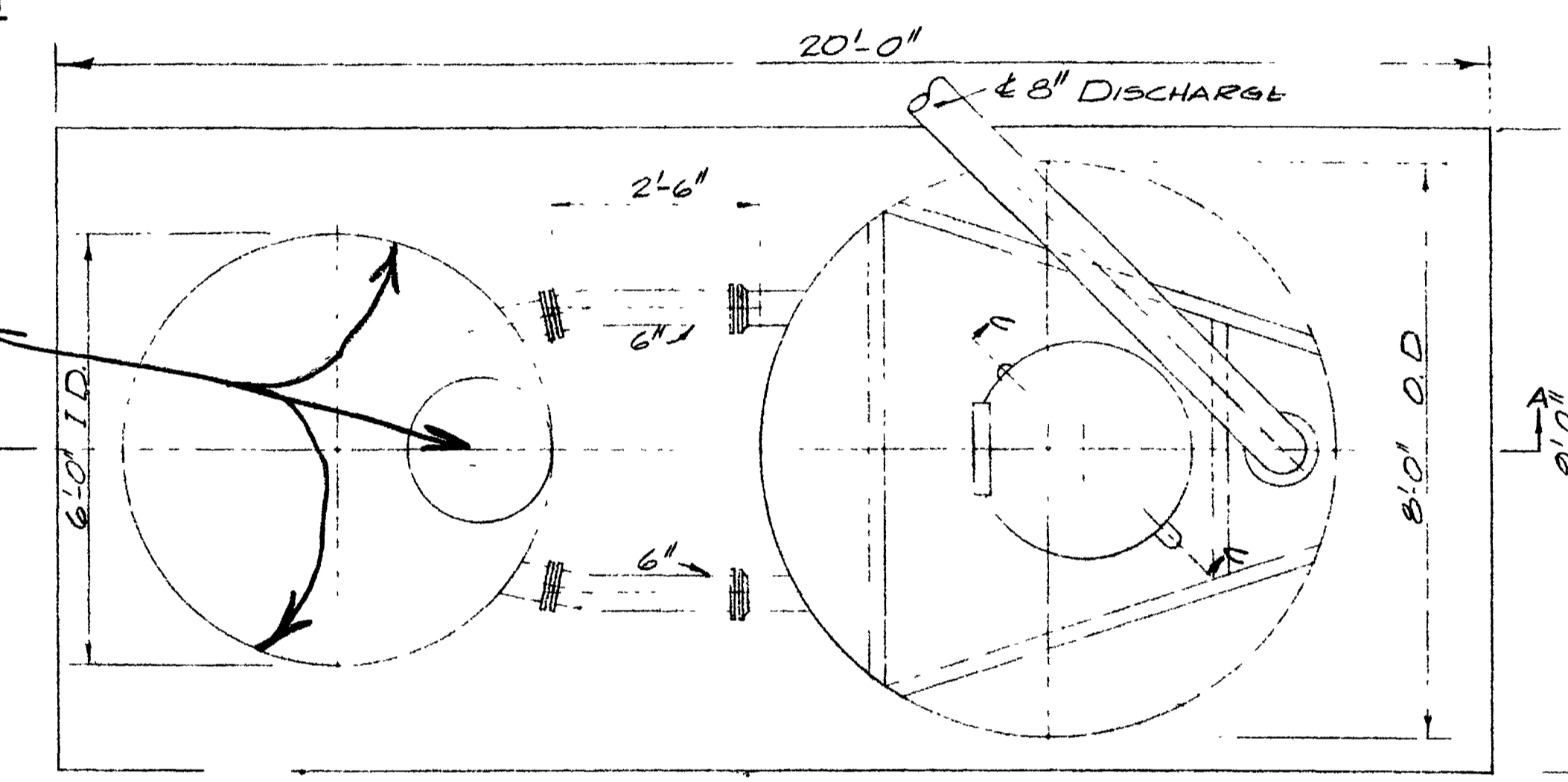


VENTILATION SYSTEM SECTION C-C

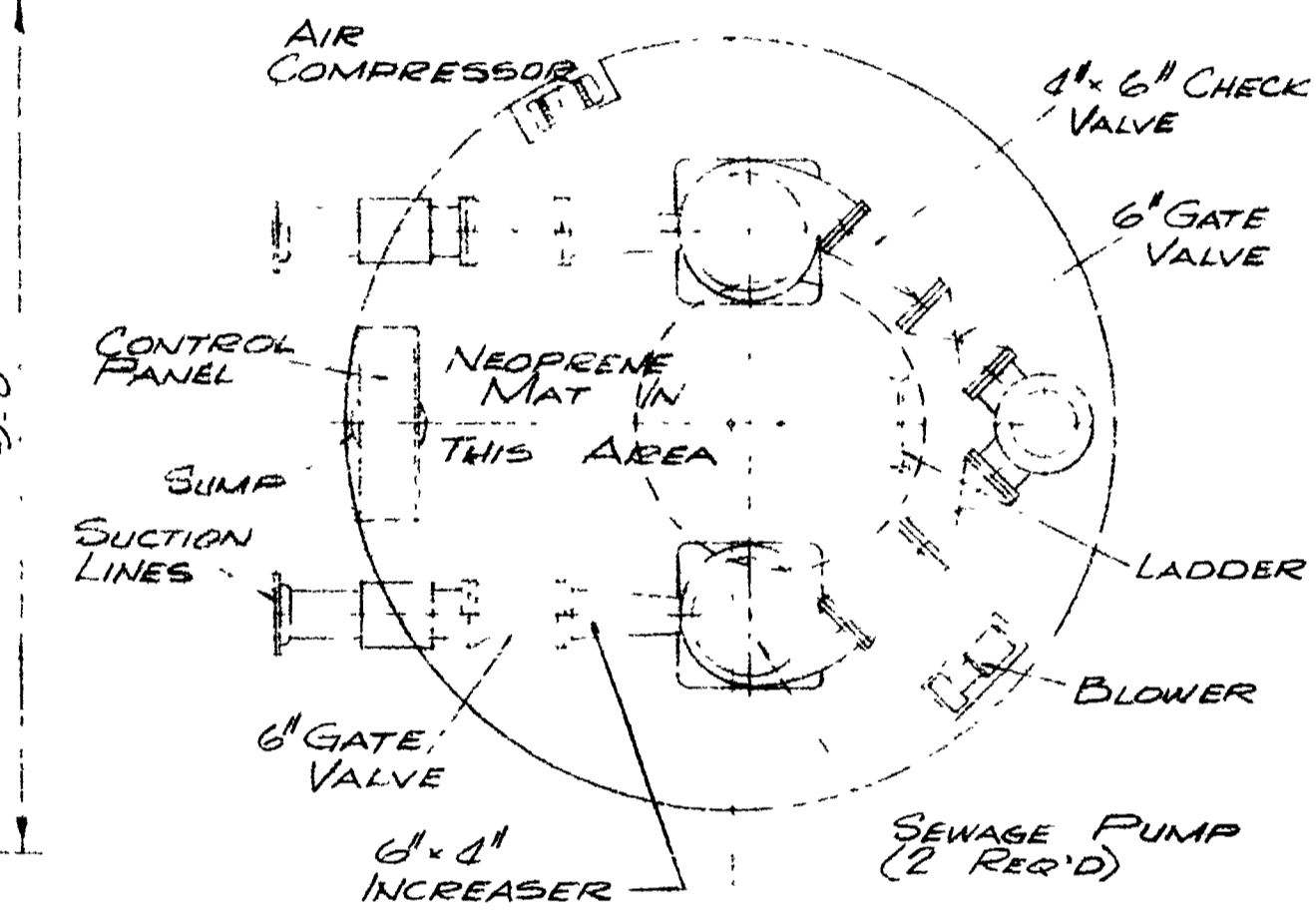


STANDARD PRECAST M.H.
1/2" = 1'-0"

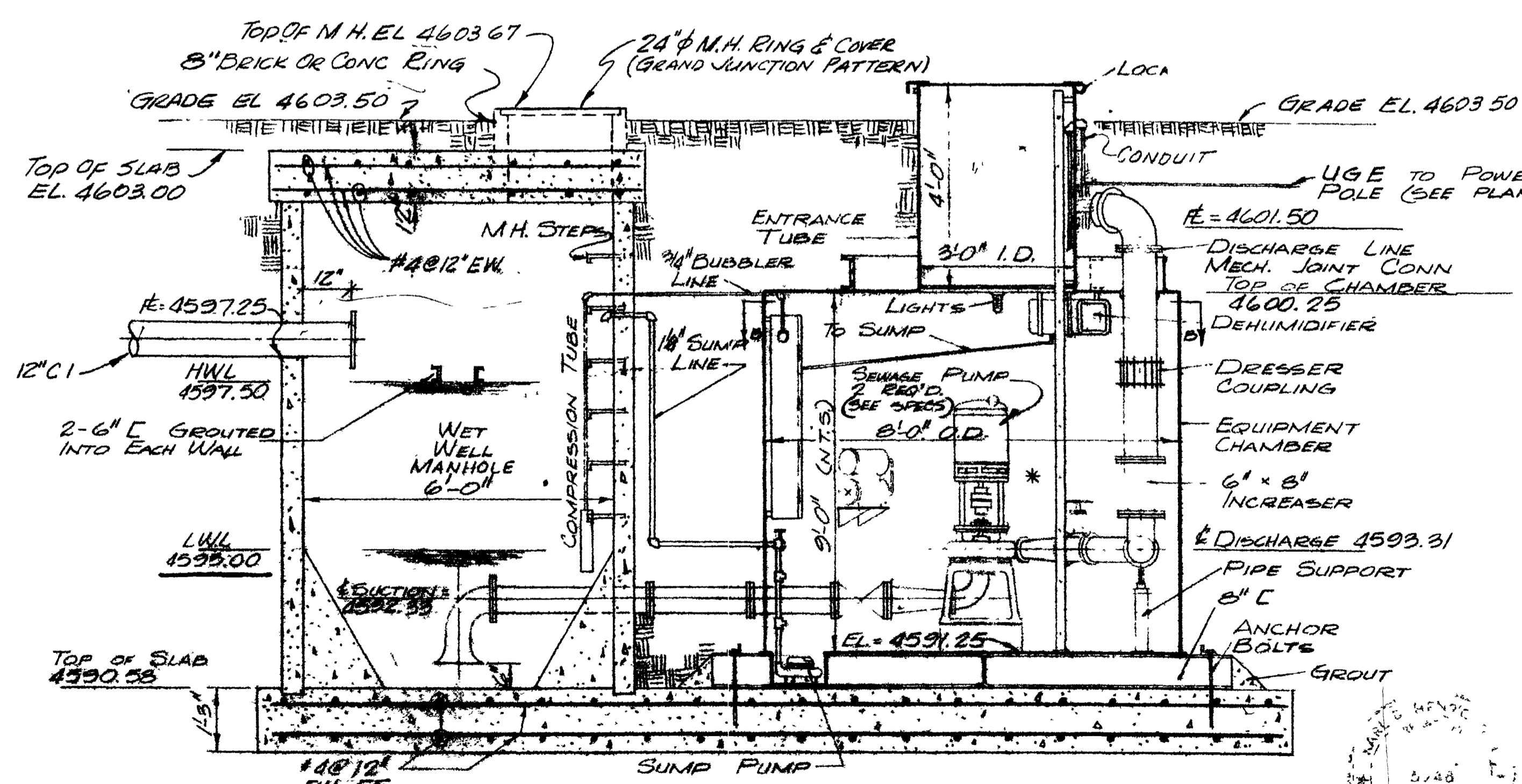
NOTES: 1. ALL PIPES ENTERING MANHOLES MUST BE FULLY SUPPORTED BY EITHER A CONCRETE CRADLE OR BY UNDISTURBED EARTH.
2. PRECAST SECTIONS SHALL HAVE MINIMUM TOTAL STEEL AREA EQUAL TO A S.T.M. REQUIRED FOR STANDARD R.C. SEWER PIPE CONC 3000 PSI
3. ALL PIPES ENTERING OR LEAVING MANHOLES OR STRUCTURES MUST HAVE A FLEXIBLE JOINT NO FURTHER THAN 1' FROM OUTSIDE WALL AND ANOTHER JOINT NO FURTHER THAN 6' FROM FIRST FLEXIBLE JOINT.



PIPING PLAN SECTION B-B



PIPING PLAN SECTION B-B



ELEVATION SECTION A-A
1/2" = 1'-0"

AS CONSTRUCTED

* THIS AREA SHALL BE CONSIDERED AS CLASS I GROUP D DIVISION II HAZARDOUS AREA

SEWER SYSTEM IMPROVEMENTS GRAND JUNCTION, COLORADO

ORCHARD MESA INTERCEPTOR SEWER PUMP STATION & FORCE MAIN MISCELLANEOUS DETAILS

HINNINGSON, DURHAM & RICHARDSON, INC.
ENGINEERS • PLANNERS • CONSULTANTS
DENVER, COLORADO

NO. 1	DATE	DESCRIPTION	REVISIONS	MADE	APPROV
1	NOV 6-67	REVISED PUMP STATION PLAN & DETAILS	RWS. KDH.	AT.	KDH.

JOB 733110
DESIGNED E.F.R.
CHECKED K.D.H.
APPROVED W.C.G.
DATE 7-28-69