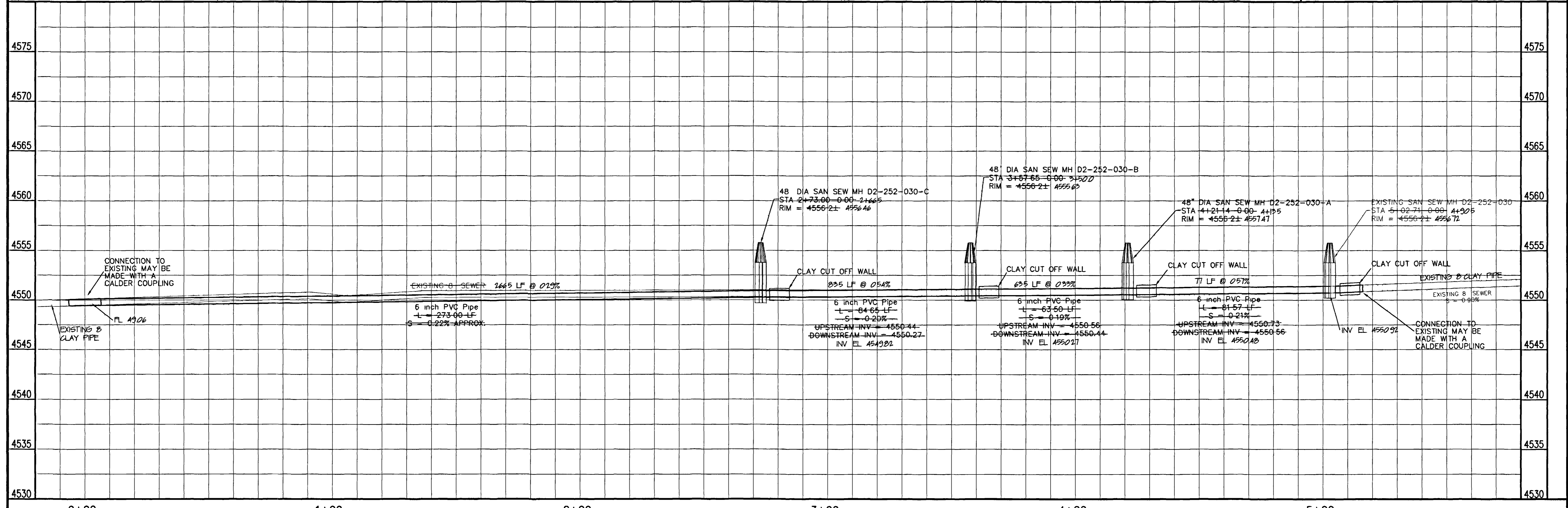
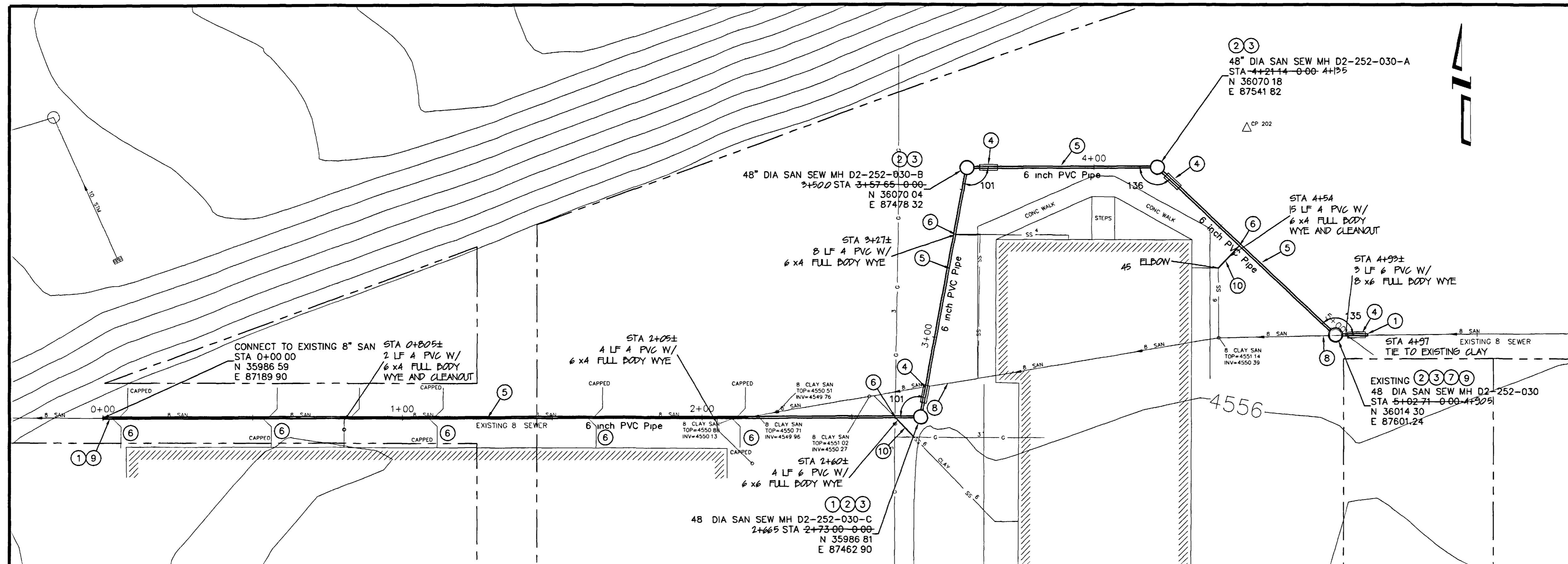


CONSTRUCTION NOTES

- ① 102 - CONNECTION TO EXISTING MAY BE MADE WITH A CALDER COUPLING
- ② 102 11 - SANITARY SEWER BASIC MANHOLE COMPONENTS (48 1D) (SEE CITY OF GRAND JUNCTION STANDARD DETAIL SS-02)
- ③ 102 11 - MANHOLE BARREL (D>5) (48 1D) (SEE CITY OF GRAND JUNCTION STANDARD DETAIL SS-02)
- ④ 103 10 - CUTOFF WALL THE CONTRACT UNIT PRICE FOR GRAVITY SEWER PIPE SHALL INCLUDE THE COST OF CUTOFF WALLS
- ⑤ 102 9A - 6 GRAVITY SEWER PIPE (SDR-35 PVC) BACKFILL TRENCH WITH NATIVE MATERIALS MEETING 103 16 EARTH BACKFILL MATERIAL
- ⑥ 102/103/104 - CONTRACTOR SHALL FIELD VERIFY SEWER SERVICE TAP TO EXISTING SERVICE LINE (SEE CITY OF GRAND JUNCTION TYPICAL SERVICE Y CONNECTION) (INCLUDES ALL FITTINGS AS NEEDED TO MAKE CONNECTION BACK TO EXISTING AND RESTORE SERVICE)
- ⑦ 202 - REMOVE MANHOLE
- ⑧ 202 - ABANDON EXISTING PIPE (PLUG REMAINING ENDS WITH CONCRETE)
- ⑨ CONTRACTOR SHALL VERIFY INVERT ELEVATIONS AT THE IN LOCATIONS AND REPORT ANY DISCREPANCIES TO THE CITY OF GRAND JUNCTION PRIOR TO ANY CONSTRUCTION
- ⑩ INSTALL 6x6x4 DOUBLE SWEEP CLEANOUT



REVISION Δ MOVED MANHOLES AND EXTENDED PIPE	DATE 2005	DRAWN BY JCS	DATE 2005
REVISION Δ REVISED TO AS-BUILT CONDITIONS	DATE 1-2006	DESIGNED BY	DATE
REVISION Δ		CHECKED BY	DATE
REVISION Δ		APPROVED BY	DATE

SCALES

PLAN HORIZONTAL 1" = 20'	PROFILE HORIZONTAL 1" = 20' VERTICAL 1" = 5'
--------------------------------	--

CITY OF Grand Junction COLORADO

PUBLIC WORKS AND UTILITIES ENGINEERING DIVISION

RIVERSIDE SCHOOL SEWER REALIGNMENT SANITARY SEWER PLAN AND PROFILE