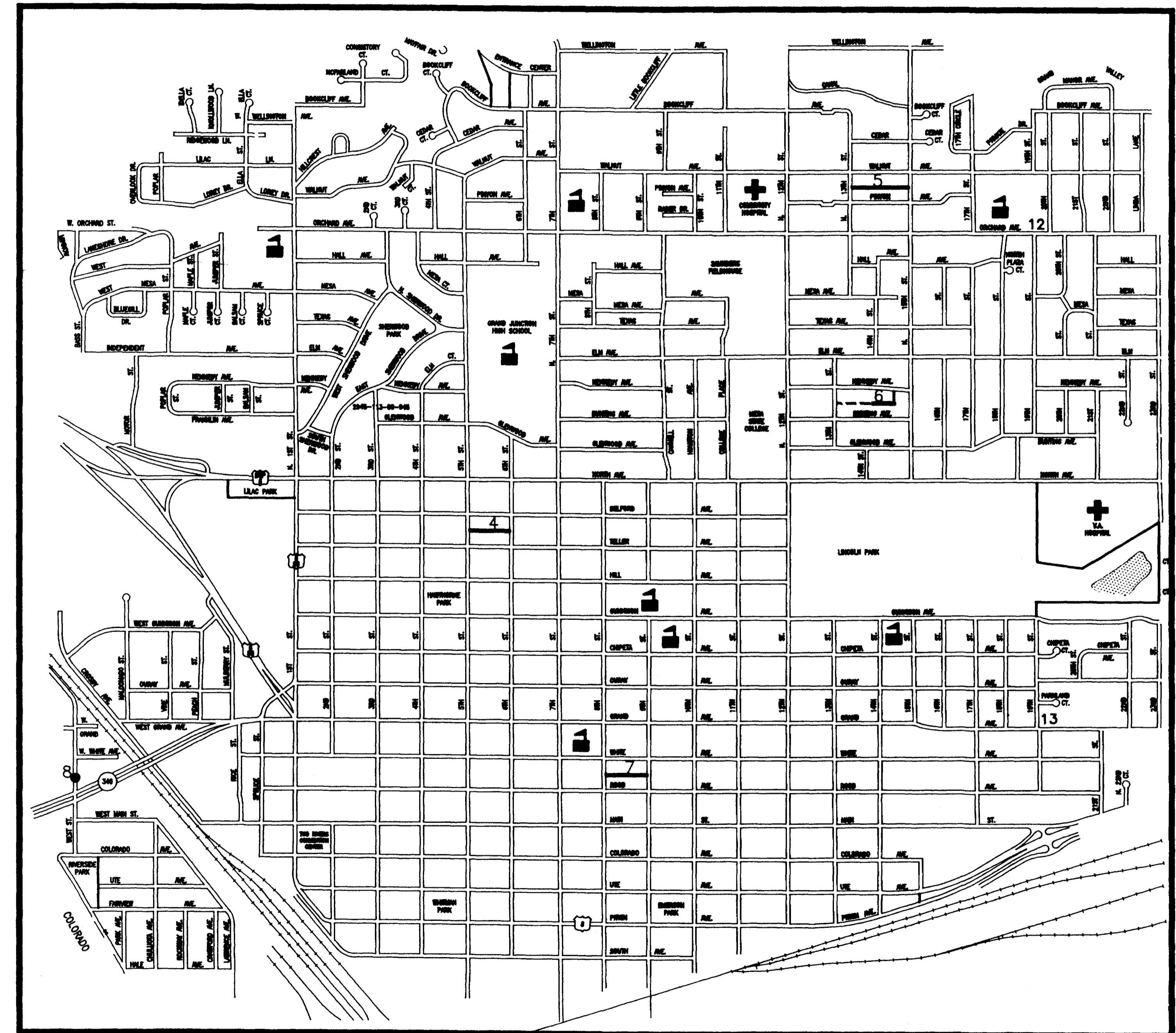


1993 SEWER LINE REPLACEMENTS

NOT ASBUILT

1. Cover Sheet
2. Drafting Standards & Abbreviations
3. Summary of Quantities
4. Teller / Belford Alley - 6th to 5th
5. Pinyon / Walnut Alley - 13th to 14th
6. Bunting / Kennedy Alley - 15th to 14th
7. Rood / White Alley - 9th to 8th
8. River Road Manhole, Alley Reconstruction Detail
9. Exhibit "E" - Standard Concrete Details
10. Exhibit "I" - Standard Sanitary Sewer Details

DISCLAIMER: FIELD VERIFY ALL PIPE SIZES, MATERIALS AND LOCATIONS PRIOR TO ANY CONSTRUCTION WORK. THE CITY OF GRAND JUNCTION IS NOT RESPONSIBLE FOR ANY INACCURACIES IN AS-BUILT RECORDS.



VICINITY MAP

City of Grand Junction, Colorado
Department of Public Works & Utilities *Engineering Division*

SUMMARY OF APPROXIMATE QUANTITIES

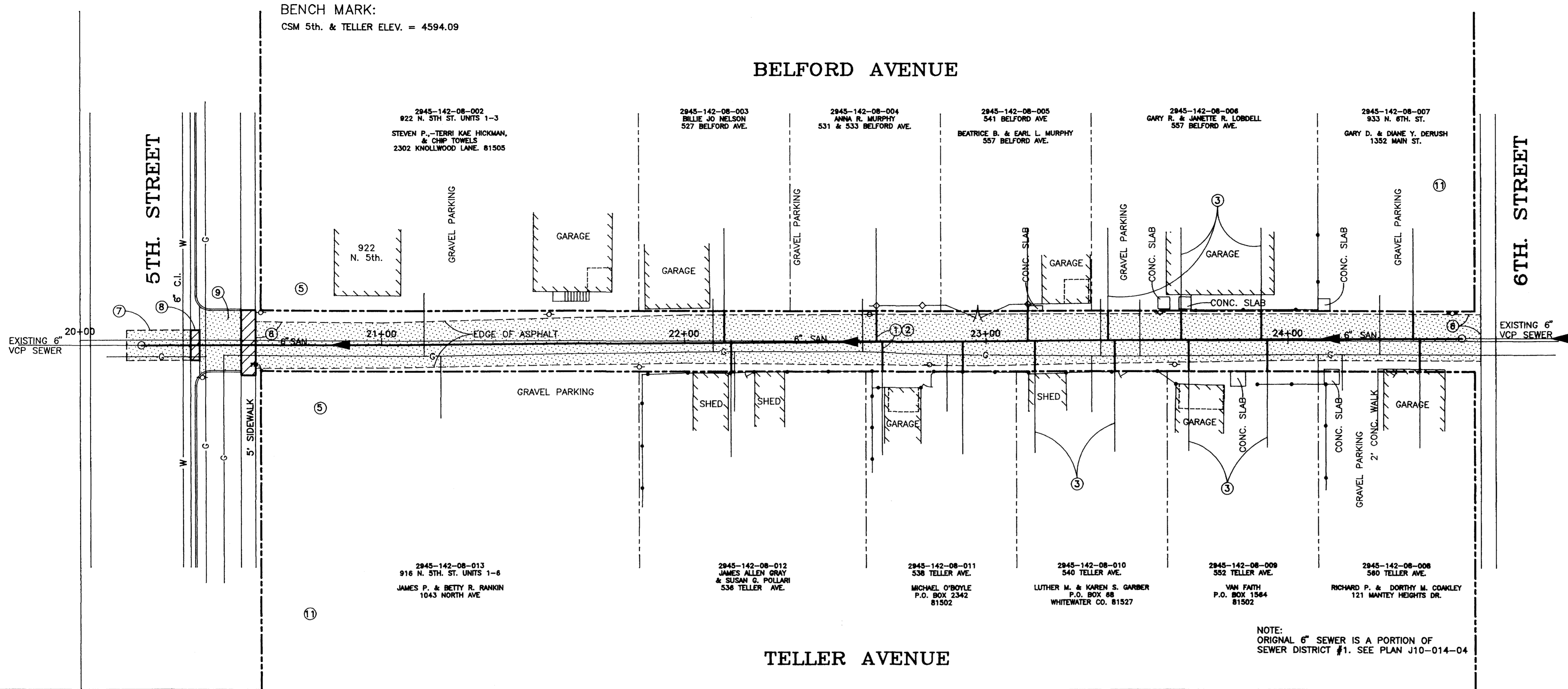
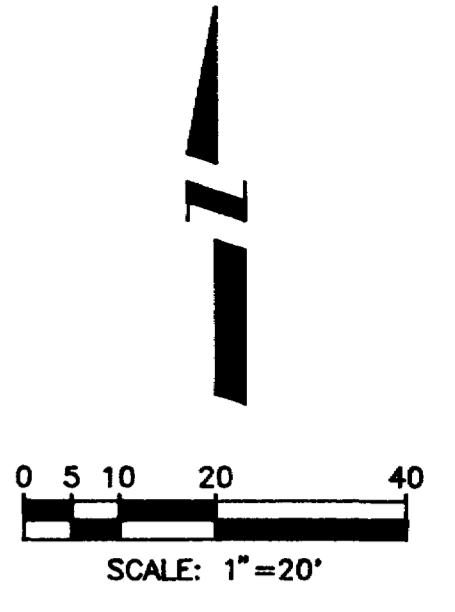
ITEM NO.	REF. NO.	CONTRACT ITEM	TOTAL QUANTITY	TELLER/ BELFORD	PINYON/ WALNUT	BUNTING/ KENNEDY	ROOD/ WHITE	RIVER ROAD
1	202	CUT AND REMOVE EXISTING ASPHALT	1540 S.Y.	780	0	0	720	40
2	202	REMOVE AND DISPOSE EXISTING CONCRETE	16 S.Y.	16	0	0	0	0
3	202	REMOVE AND DISPOSE EXISTING MANHOLE AND BASE	5 EA.	0	2	1	1	1
4	206	FURNISH IMPOTED FILL (PIT RUN)	2600 TON	1300	0	0	1180	120
5	304	FURNISH AND PLACE SUBGRADE STABILIZATION MATERIAL	400 TON	200	0	0	200	0
6	304	FURNISH AND PLACE AGGREGATE BASE COURSE	915 TON	265	190	200	245	15
7	403	FURNISH AND PLACE HOT BITUMINOUS PAVEMENT	30 TON	15	0	0	0	15
8	420	FURNISH AND PLACE GEOTEXTILE	100 S.Y.	50	0	0	50	0
9	603	FURNISH AND INSTALL 8" PVC, SDR35	1440 L.F.	438	308	319	375	0
10	603	RECONNECT SEWER SERVICES	53 EA.	16	10	11	16	0
11	604	FURNISH AND INSTALL 48" MANHOLE	4 EA.	0	2	1	1	0
12	604	FURNISH AND INSTALL 60" MANHOLE	1 EA.	0	0	0	0	1
13	604	CONNECT SEWER TO EXISTING MANHOLE	4 EA.	2	0	1	1	0
14	604	FURNISH AND INSTALL MANHOLE RING AND COVER	3 EA.	2	0	0	1	0
15	609	FURNISH AND PLACE 6" THICK CONCRETE	16 S.Y.	16	0	0	0	0
16	626	MOBILIZATION	1 L.S.	0.2	0.2	0.2	0.2	0.2
17	630	TRAFFIC CONTROL FOR TELLER / BELFORD ALLEY	1 L.S.	1	0	0	0	0
18	630	TRAFFIC CONTROL FOR PINYON / WALNUT ALLEY	1 L.S.	0	1	0	0	0
19	630	TRAFFIC CONTROL FOR BUNTING / KENNEDY ALLEY	1 L.S.	0	0	1	0	0
20	630	TRAFFIC CONTROL FOR ROOD / WHITE ALLEY	1 L.S.	0	0	0	1	0
21	630	TRAFFIC CONTROL FOR RIVER ROAD MANHOLE	1 L.S.	0	0	0	0	1

REVISION Δ _____	DESCRIPTION _____	DATE _____	DRAWN BY <u>L. MARTIN</u>	DATE <u>6/93</u>	SCALE PLAN _____ PROFILE _____
REVISION Δ _____	_____	_____	CHECKED BY <u>T.K.H.</u>	DATE <u>6/93</u>	
REVISION Δ _____	_____	_____	APPROVED BY <u>T.K.H.</u>	DATE <u>6/93</u>	HORIZ. _____ VERT. _____
REVISION Δ _____	_____	_____	FIELD BOOK NO. _____	PAGE _____	

DEPARTMENT OF PUBLIC WORKS AND UTILITIES
ENGINEERING DIVISION
CITY OF GRAND JUNCTION, COLORADO

1993 SEWER LINE PEPLACEMENTS
?
SUMMARY OF QUANTITIES

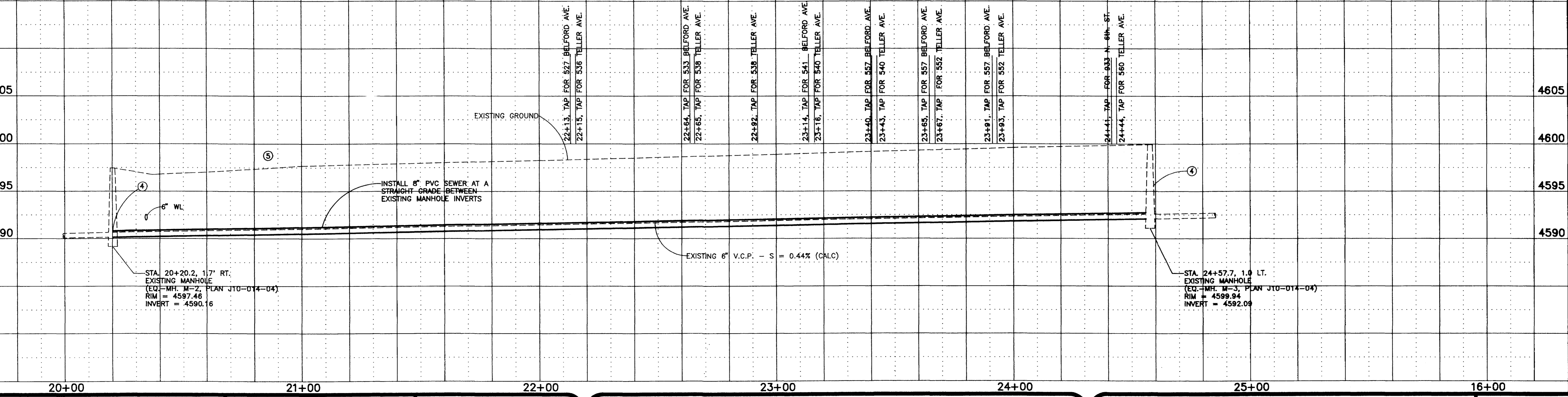
SHEET NO. <u>3</u>
OF <u>?</u>
FILE NO. <u>?DWG</u>



- CONSTRUCTION NOTES:**
- ① (TYPICAL) LOCATE ACTIVE SEWER SERVICES. INSTALL 6" X 4" WYE, 4'-45" ELBOW AND OTHER FITTINGS IF NEEDED. EXTEND 4" P.V.C. PIPE TO EDGE OF ALLEY RIGHT-OF-WAY AND CONNECT TO THE EXISTING SERVICE LINE WITH A CALDER COUPLING ENCASED IN CONCRETE. RECORD STATIONING OF WYE. IF SERVICE IS NOT PERPENDICULAR TO THE MAIN RECORD THE STATION AND OFFSET AT THE EDGE OF THE RIGHT-OF-WAY.
 - ② SEWER TAP LOCATION SHOWN ON THE PLAN AND PROFILE ARE BASED ON TV INSPECTION FOOTAGE AND MAY VARY SLIGHTLY. ADDITIONAL TAPS MAY EXIST WHERE THE CAMERA WAS UNDER WATER DURING THE INSPECTION.
 - ③ FOR SOME LOTS MORE THAN ONE TAP WAS FOUND IN THE INSPECTION. THE CONTRACTOR SHALL DETERMINE WHICH ONES ARE ACTIVE AND RECONNECT THEM. THE INACTIVE ONES SHALL BE ABANDONED.
 - ④ EXTEND 6" PVC PIPE TO THE INSIDE OF THE EXISTING MANHOLE. RECONSTRUCT THE MANHOLE BASE AS NEEDED TO PROVIDE A SMOOTH TRANSITION TO THE PIPE. INSTALL WATERSTOP ON PVC PIPE AND GROUT INTO MANHOLE REPLACE RING AND COVER.
 - ⑤ THE LOCATION OF THE TAPS TO 916 AND 922 N. 5th. ST. WERE NOT DETERMINED IN THE TV INSPECTION BECAUSE THE CAMERA WAS UNDER WATER THROUGH THIS SECTION OF LINE.
 - ⑥ REMOVE ASPHALT AND RECONSTRUCT GRAVEL ALLEY-STA 20+53, TO 24+64. SEE DETAIL, SHEET #8.
 - ⑦ CUT AND REPLACE ASPHALT IN 5th. STREET FROM THE WEST LANE LINE TO THE EDGE OF THE GUTTER. MAXIMUM PAY WIDTH IS 10 FEET. (6" A.B.C., 6" H.B.P.)
 - ⑧ CUT, REMOVE & REPLACE CONCRETE GUTTER.
 - ⑨ REMOVE & REPLACE ASPHALT FROM BACK OF GUTTER TO FACE OF SIDEWALK TO FACE OF CURBS ON THE SIDES. (6" A.B.C., 3" H.B.P.)
 - ⑩ REMOVE & REPLACE 5' SIDEWALK, 6" THICK. 10.0' LT. TO 11.5' RT.
 - ⑪ SEWER SERVICES FOR 908 N. 5th. ST. AND 941 N. 6th. ST. MAY BE CONNECTED TO THIS SEWER. CONTRACTOR SHALL VERIFY AND RECONNECT THEM IF THEY DO.

NOTE:
ORIGINAL 6" SEWER IS A PORTION OF
SEWER DISTRICT #1. SEE PLAN J10-014-04

DISCLAIMER: FIELD VERIFY ALL PIPE SIZES, MATERIALS AND LOCATIONS PRIOR TO ANY CONSTRUCTION WORK. THE CITY OF GRAND JUNCTION IS NOT RESPONSIBLE FOR ANY INACCURACIES IN AS-BUILT RECORDS.



REVISION	DESCRIPTION	DATE

DRAWN BY	L. MARTIN	DATE	6/93
CHECKED BY	T.K.H.	DATE	6/93
APPROVED BY	T.K.H.	DATE	6/93
FIELD BOOK NO.		PAGE	

SCALE	
PLAN	1"=20'
PROFILE	1"=5'
HORIZ.	1"=20'
VERT.	1"=5'

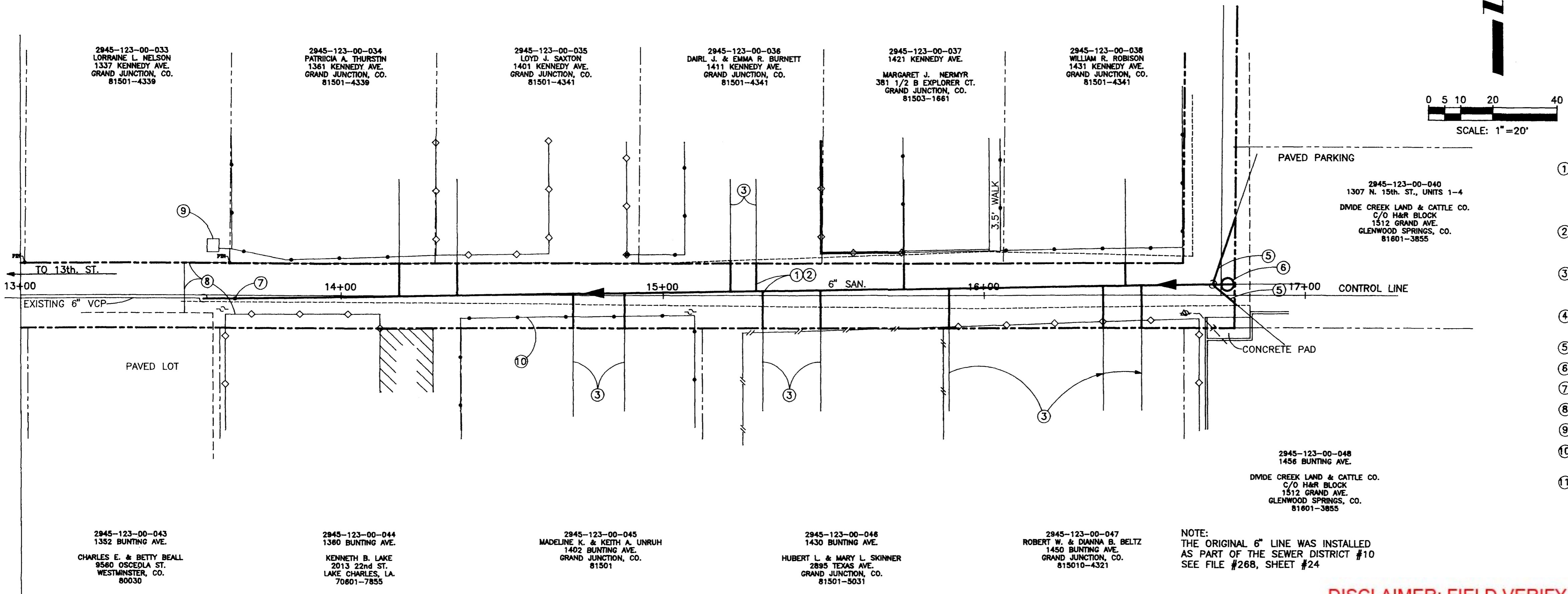
**DEPARTMENT OF PUBLIC WORKS AND UTILITIES
ENGINEERING DIVISION
CITY OF GRAND JUNCTION, COLORADO**

**1993 SEWER LINE REPLACEMENTS
TELLER/BELFORD ALLEY - 6th. TO 5th.
Plan & Profile**

SHEET NO.	4
OF	10
FILE NO.	5TH6THB.DWG

BENCH MARK:
CHIS. SQ. TOC. NCR NW COR
15th. & WALNUT ELEV. = 4642.86

KENNEDY AVENUE



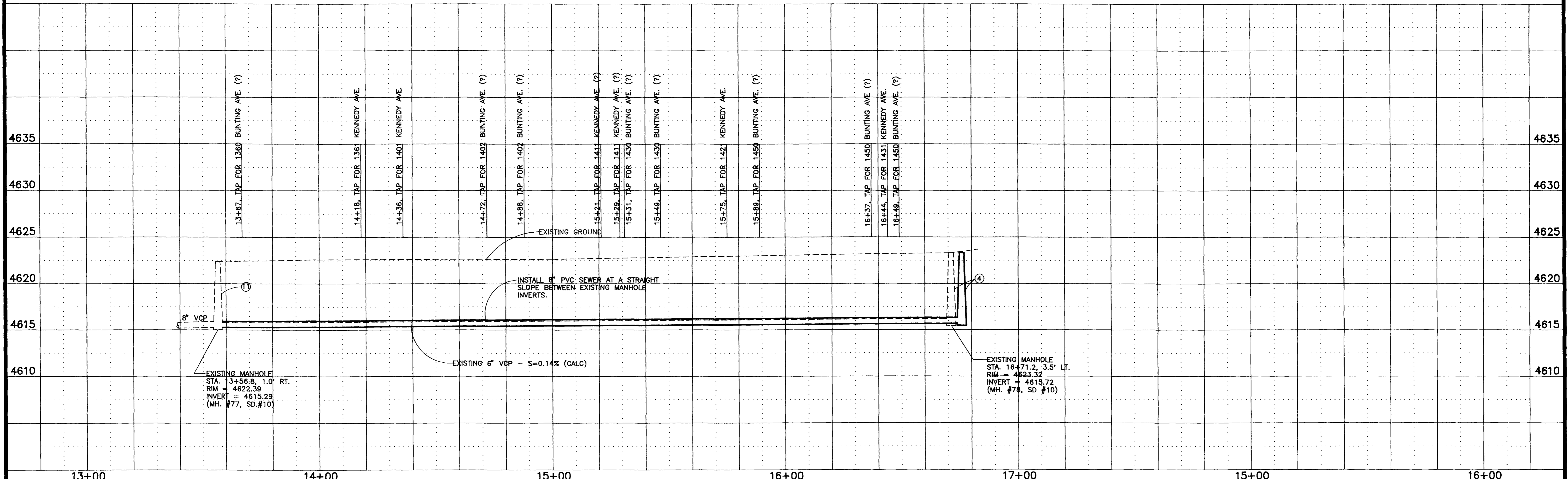
CONSTRUCTION NOTES:

- ① (TYPICAL) LOCATE ACTIVE SEWER SERVICES. INSTALL 8" X 4" WYE, 4"-45' ELBOW AND OTHER FITTINGS IF NEEDED. EXTEND 4" P.V.C. PIPE TO EDGE OF RIGHT-OF-WAY AND CONNECT TO THE EXISTING SERVICE LINE WITH A CALDER COUPLING ENCASED IN CONCRETE. RECORD STATIONING OF WYE. IF SERVICE IS PERPENDICULAR TO THE MAIN RECORD THE STATION AND OFFSET AT THE EDGE OF THE RIGHT-OF-WAY.
- ② SEWER TAP LOCATION SHOWN ON THE PLAN AND PROFILE ARE BASED ON TV INSPECTION FOOTAGE AND MAY VARY SLIGHTLY. ADDITIONAL TAPS MAY EXIST WHERE THE CAMERA WAS UNDER WATER DURING INSPECTION.
- ③ FOR SOME LOTS MORE THAN ONE TAP WAS FOUND IN THE INSPECTION. THE CONTRACTOR SHALL DETERMINE WHICH ONES ARE ACTIVE AND RECONNECT THEM. THE INACTIVE ONES SHALL BE ABANDONED.
- ④ REMOVE EXISTING MANHOLE AT 16+71.2, 3.5' RT. AND INSTALL NEW MANHOLE AT STA. 16+76, 3.5' RT.
- ⑤ EXISTING SERVICE LINES INTO MANHOLE TO CONNECT TO NEW SEWER LINE.
- ⑥ EXISTING SERVICE LINE INTO EAST SIDE OF MANHOLE TO CONNECT TO NEW MANHOLE.
- ⑦ TAP IN TOP OF MAIN (STA. 13+67) DIRECTION OF SERVICE LINE UNKNOWN.
- ⑧ RECONSTRUCT ALLEY STA. 13+51 TO 16+83. SEE DETAIL, SHEET #8.
- ⑨ REMOVE AND DISPOSE OF INCENERATOR PIT.
- ⑩ SOME FENCES AND OTHER IMPROVEMENTS ENCR OACH ON THE ALLEY. CONSTRUCTION ACTIVITIES SHALL BE CONFINED TO THE PHYSICAL ALLEY-WAY.
- ⑪ EXTEND 8" PVC PIPE TO THE INSIDE OF THE EXISTING MANHOLE. RECONSTRUCT THE MANHOLE BASE AS NEEDED TO PROVIDE A SMOOTH TRANSITION TO THE EXISTING PIPE. INSTALL WATER-STOP ON PVC AND GRPUT INTO MANHOLE.

NOTE:
THE ORIGINAL 6" LINE WAS INSTALLED AS PART OF THE SEWER DISTRICT #10 SEE FILE #268, SHEET #24

DISCLAIMER: FIELD VERIFY ALL PIPE SIZES, MATERIALS AND LOCATIONS PRIOR TO ANY CONSTRUCTION WORK. THE CITY OF GRAND JUNCTION IS NOT RESPONSIBLE FOR ANY INACCURACIES IN AS-BUILT RECORDS.

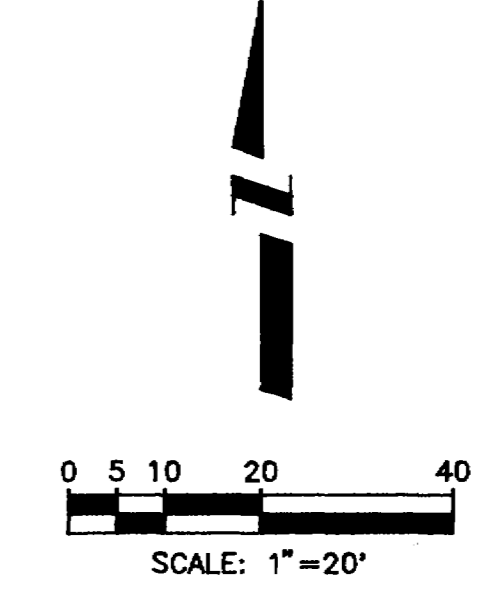
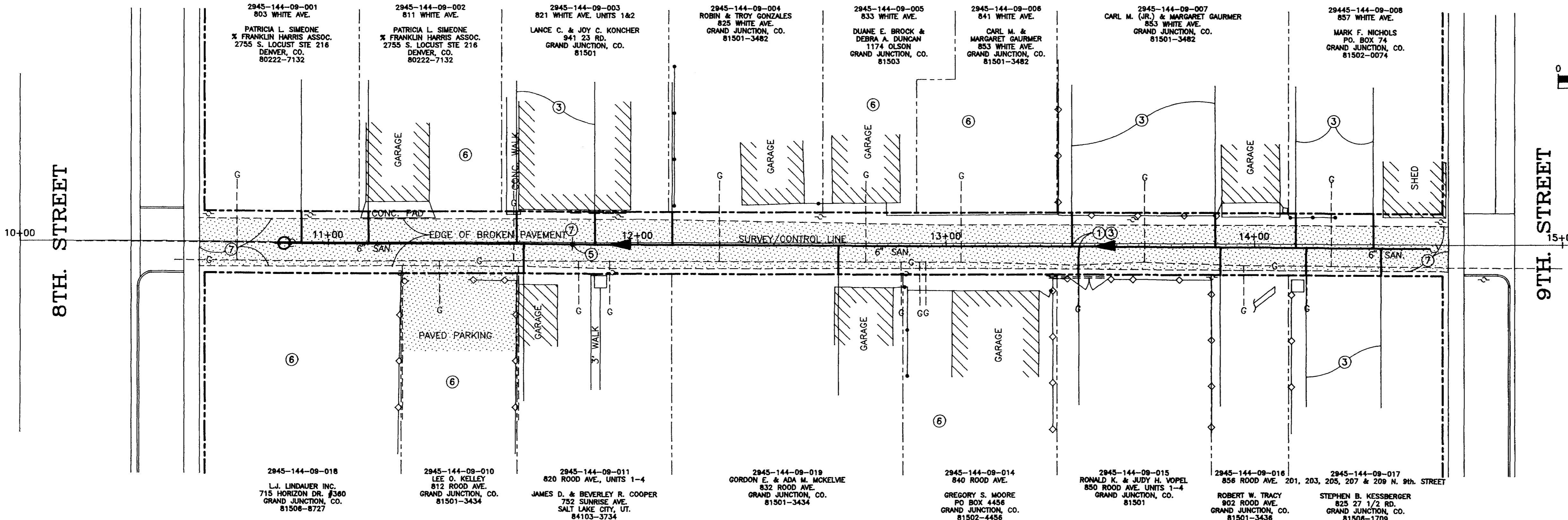
BUNTING AVENUE



REVISION Δ _____ REVISION Δ _____ REVISION Δ _____ REVISION Δ _____	DESCRIPTION _____ DATE _____ DATE _____ DATE _____ DATE _____	DRAWN BY L. MARTIN DATE 6/93 CHECKED BY T.K.H. DATE 6/93 APPROVED BY T.K.H. DATE 6/93 FIELD BOOK NO. _____ PAGE _____	SCALE PLAN HORIZ. 1"=20' PROFILE HORIZ. 1"=20' VERT. 1"=5'	DEPARTMENT OF PUBLIC WORKS AND UTILITIES ENGINEERING DIVISION CITY OF GRAND JUNCTION, COLORADO	1993 SEWER LINE REPLACEMENTS BUNTING/KENNEDY - 14th. TO 15th. Plan & Profile	SHEET NO. 6 OF 10 FILE NO. 1315KB.DWG
--	---	--	---	--	--	---

BENCH MARK:
CSM 8th. & WHITE ELEV. = 4591.73

WHITE AVENUE



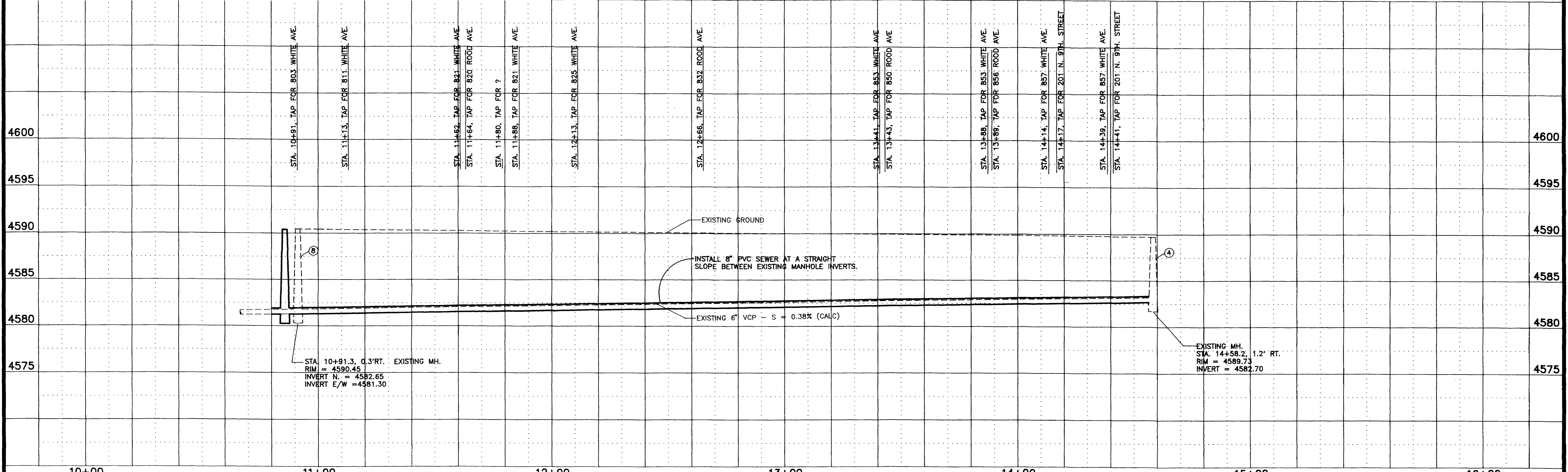
CONSTRUCTION NOTES:

- ① (TYPICAL) LOCATE ACTIVE SEWER SERVICES. INSTALL 8" X 4" WYE, 4'-45" ELBOW AND OTHER FITTINGS IF NEEDED. EXTEND 4" P.V.C. PIPE TO EDGE OF ALLEY RIGHT-OF-WAY AND CONNECT TO THE EXISTING SERVICE LINE WITH A CALDER COUPLING ENCASED IN CONCRETE. RECORD STATIONING OF WYE. IF SERVICE IS NOT PERPENDICULAR TO THE MAIN RECORD THE STATION AND OFFSET AT THE EDGE OF THE RIGHT-OF-WAY.
- ② SEWER TAP LOCATION SHOWN ON THE PLAN AND PROFILE ARE BASED ON TV INSPECTION FOOTAGE AND MAY VARY SLIGHTLY. ADDITIONAL TAPS MAY EXIST WHERE THE CAMERA WAS UNDER WATER DURING THE INSPECTION.
- ③ FOR SOME LOTS MORE THAN ONE TAP WAS FOUND IN THE INSPECTION. THE CONTRACTOR SHALL DETERMINE WHICH ONES ARE ACTIVE AND RECONNECT THEM. THE INACTIVE ONES SHALL BE ABANDONED.
- ④ EXTEND 8" P.V.C. PIPE TO THE INSIDE OF THE EXISTING MANHOLE. RECONSTRUCT THE MANHOLE BASE AS NEEDED. INSTALL WATER-STOP ON PVC PIPE AND GROUT INTO MANHOLE. REPLACE RING AND COVER.
- ⑤ TAP LOCATED ON TOP OF MAIN! DIRECTION OF SERVICE LINE UNKNOWN.
- ⑥ THE LOCATIONS OF THE TAPS FOR THE NOTED LOTS WERE NOT DETERMINED WITH THE TV INSPECTION. THE CONTRACTOR SHALL LOCATE AND RECONNECT THE SERVICES.
- ⑦ REMOVE ASPHALT AND RECONSTRUCT GRAVEL ALLEY STA. 10+58 TO 14+63. SEE DETAIL, SHEET #8.
- ⑧ REMOVE EXISTING MANHOLE, AT STA. 10+91.3 AND INSTALL NEW MANHOLE AT STA. 10+87. EXTEND NEW SEWER LINE THROUGH MANHOLE, REMOVE TOP HALF WITHIN MANHOLE, AND CONNECT TO EXISTING SEWER WITH CONCRETE ENCASED CALDER COUPLING.

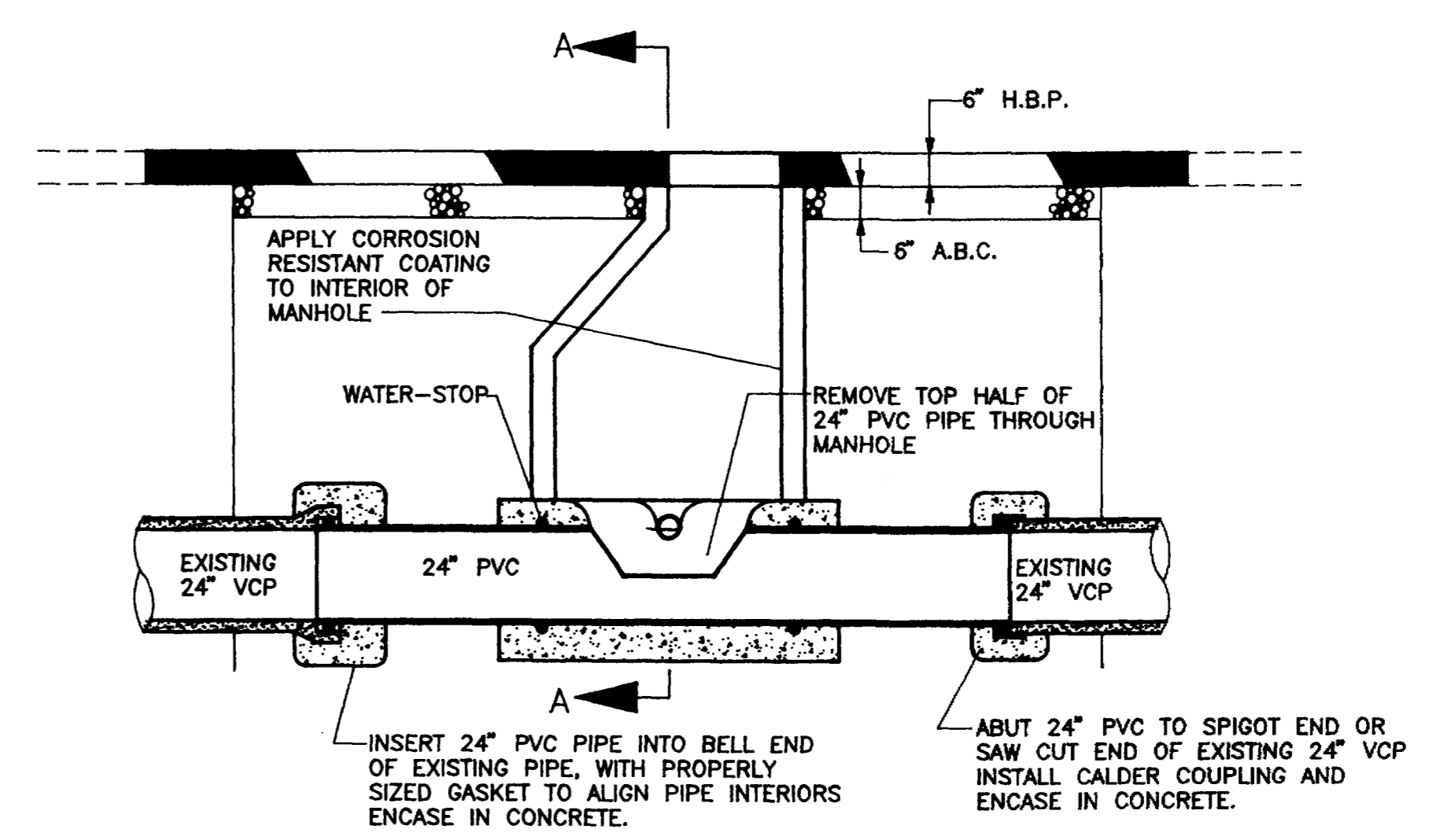
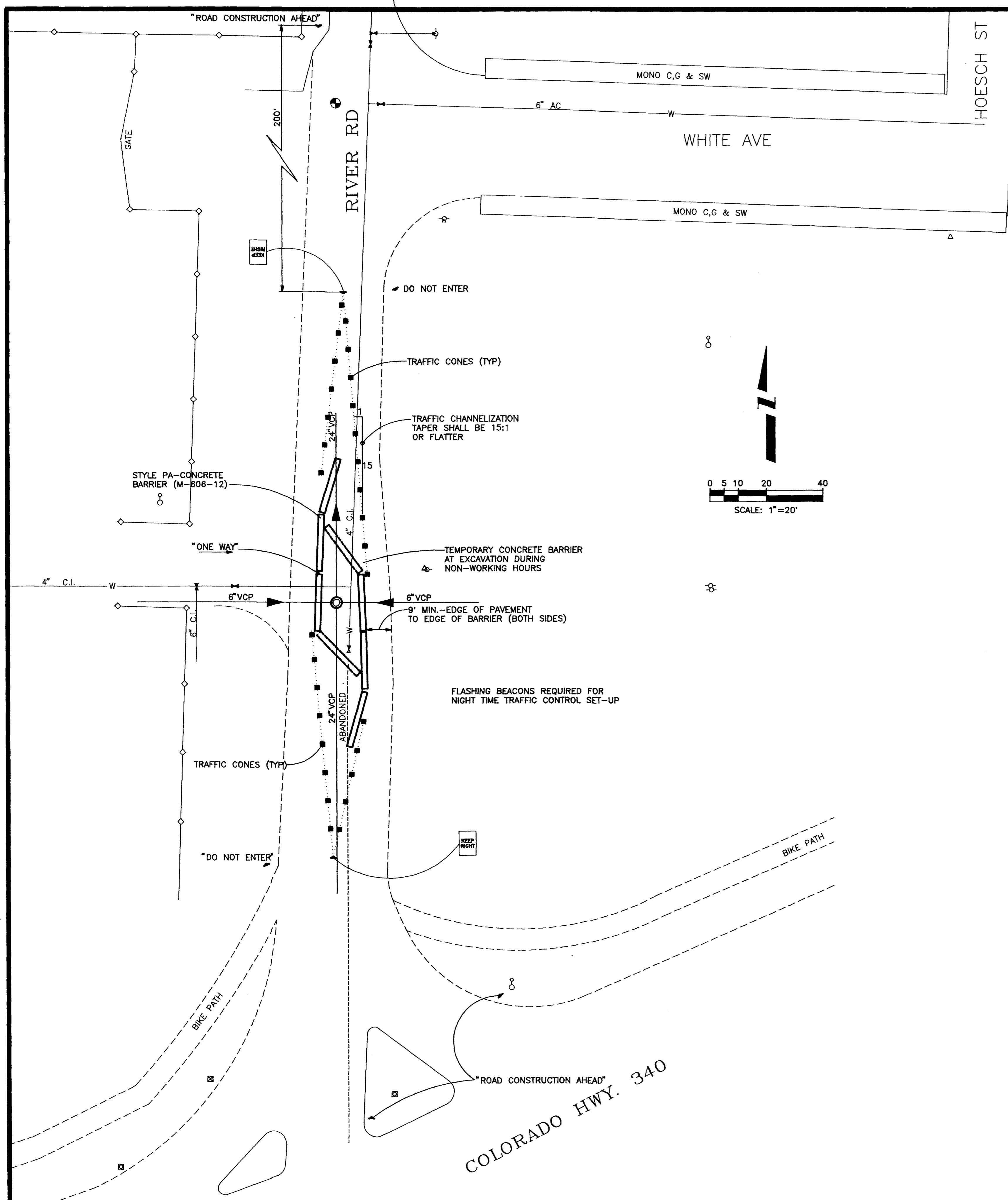
DISCLAIMER: FIELD VERIFY ALL PIPE SIZES, MATERIALS AND LOCATIONS PRIOR TO ANY CONSTRUCTION WORK. THE CITY OF GRAND JUNCTION IS NOT RESPONSIBLE FOR ANY INACCURACIES IN AS-BUILT RECORDS.

ROOD AVENUE

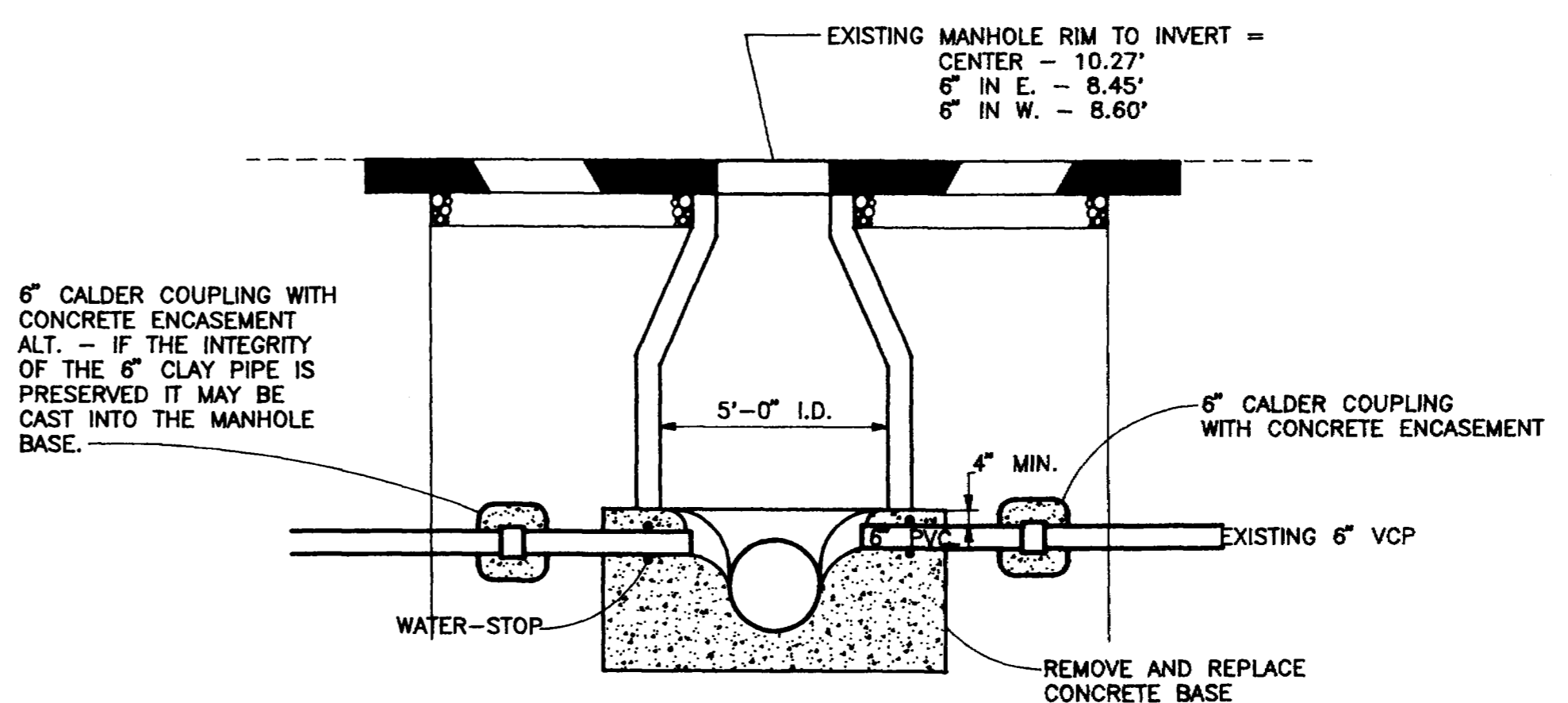
NOTE:
ORIGINAL 6" LINE INSTALLED IN SEWER DISTRICT NO. 2. SEE PLAN #J10-014-06



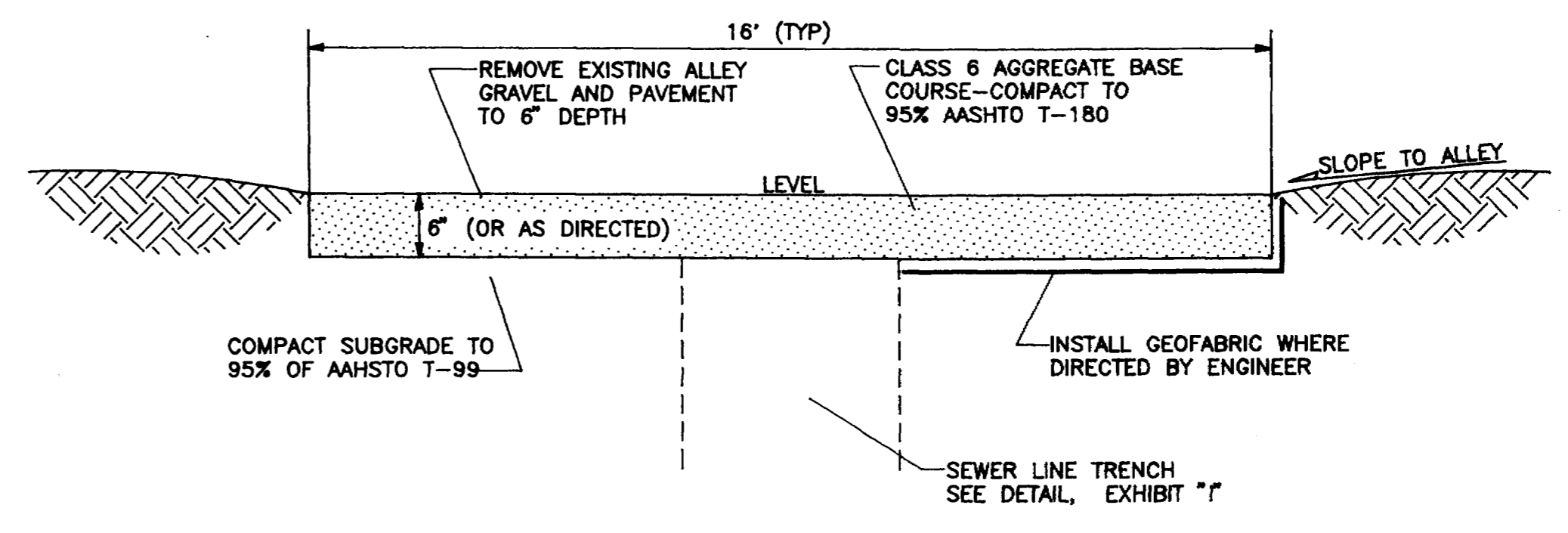
REVISION Δ _____ REVISION Δ _____ REVISION Δ _____ REVISION Δ _____	DESCRIPTION _____ DATE _____ DRAWN BY L. MARTIN DATE 6/93 CHECKED BY T.A.B. DATE 6/93 APPROVED BY T.K.H. DATE 6/93 FIELD BOOK NO. _____ PAGE _____	SCALE _____ PLAN _____ PROFILE _____ HORIZ. 1"=20' HORIZ. 1"=20' VERT. 1"=5'	DEPARTMENT OF PUBLIC WORKS AND UTILITIES ENGINEERING DIVISION CITY OF GRAND JUNCTION, COLORADO	1993 SEWER LINE REPLACEMENTS ROOD/WHITE ALLEY 8th. TO 9th. Plan & Profile	SHEET NO. 7 OF 10 FILE NO. 8th9thWR.DWG
--	---	---	--	---	--



RIVER ROAD MANHOLE
N.T.S.



SECTION A-A



ALLEY SURFACE RECONSTRUCTION

TRAFFIC CONTROL FOR RIVER ROAD MANHOLE

REVISION	DESCRIPTION	DATE	DRAWN BY	L. MARTIN	DATE	6/93	SCALE	PLAN	PROFILE	
REVISION			CHECKED BY	T.A.B.	DATE	6/93	HORIZ.	N.T.S.	HORIZ.	N.T.S.
REVISION			APPROVED BY	T.K.H.	DATE	6/93	VERT.	N.T.S.		
REVISION			FIELD BOOK NO.		PAGE					

DEPARTMENT OF PUBLIC WORKS AND UTILITIES
ENGINEERING DIVISION
CITY OF GRAND JUNCTION, COLORADO

RIVER ROAD TRAFFIC CONTROL
MANHOLE AND ALLEY RECONSTRUCTION
Detail Sheet

SHEET NO.	8
OF	10
FILE NO.	RIVER340.DWG