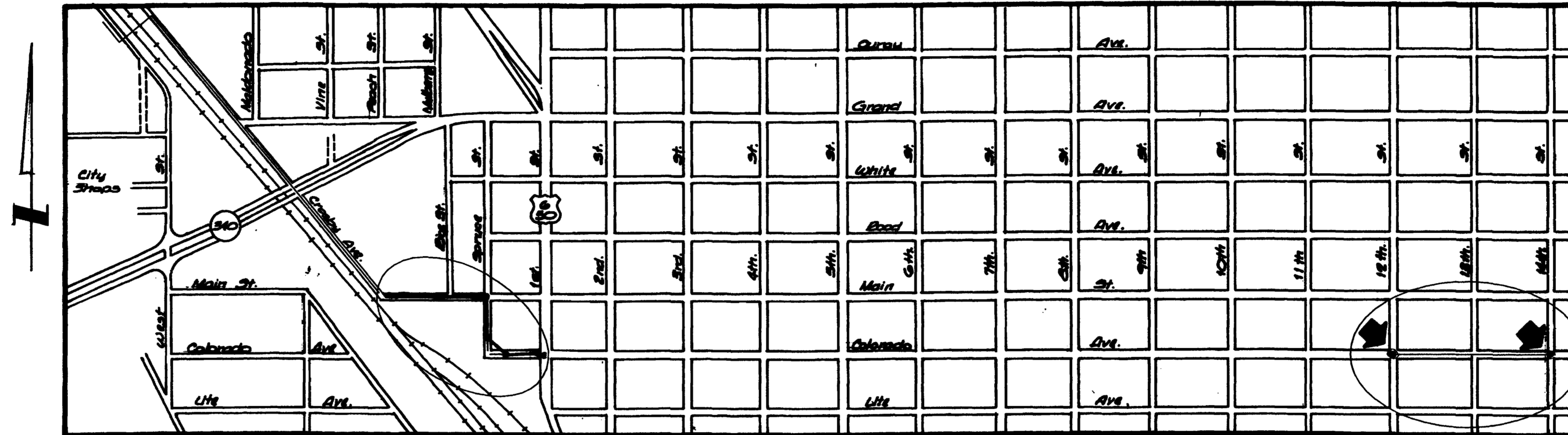


COLORADO INTERCEPTOR SEWER REHABILITATION



1. Cover Sheet
2. Standards and Abbreviations
- 3.-8. Plan and Profile Sheets

CITY OF GRAND JUNCTION

DEPARTMENT OF PUBLIC WORKS AND UTILITIES

ENGINEERING DIVISION

CITY OF GRAND JUNCTION DRAFTING STANDARDS AND ABBREVIATIONS

ENTITY DESCRIPTION

	LAYER	LINE TYPE	BLOCK	SPACING
PROPERTY OR TRACT LINE	PROP	ROW	-	-
RAILROAD	EXIST/NEW	CONTINUOUS	RAIL	4
EDGE OF PAVEMENT	EXIST/ASPH	DASHED	-	-
RIGHT OF WAY	ROW	ROW	-	-
BARBED WIRE FENCE	EXIST/NEW	CONTINUOUS	BARB	15
CHAIN LINK FENCE	EXIST/NEW	CONTINUOUS	CHAIN	15
BARRIER TYPE FENCE	EXIST/NEW	CONTINUOUS	BARRIER	15
WOVEN WIRE FENCE	EXIST/NEW	CONTINUOUS	WOVEN	15
WOOD FENCE	EXIST/NEW	CONTINUOUS	WOOD	15
EXISTING GUARD RAIL	EXIST	CONTINUOUS	GUARD	5
NEW GUARD RAIL	NEW	CONTINUOUS	NEWGUARD	5
RETAINING WALL	EXIST	CONTINUOUS	RETAIN	6
SIDEWALK	EXIST/CONC	CONTINUOUS	-	-
CURB & GUTTER	EXIST/CONC	CONTINUOUS	-	-
CURB, GUTTER & SIDEWALK	EXIST/CONC	CONTINUOUS	-	-
BURIED TELEPHONE CABLE	UTIL	CONTINUOUS	-	-
BURIED ELECTRIC CABLE	UTIL	CONTINUOUS	-	-
GAS LINE	UTIL	CONTINUOUS	-	-
WATER LINE	UTIL/WATER	CONTINUOUS	-	-
SANITARY SEWERS	UTIL/SEWER	CONTINUOUS	AROW	-
STORM SEWERS	UTIL/STORM	CONTINUOUS	AROW	-
UNDERGROUND IRRIG. PIPE	UTIL/NEW	CONTINUOUS	AROW	-
SIPHON PIPE	UTIL/NEW	CONTINUOUS	AROW	-
EARTH DITCH	EXIST/NEW	DIVIDE	-	-
CONCRETE DITCH	EXIST/CONC	CONTINUOUS	-	-
CULVERT	EXIST/NEW	DASHED	-	-
CULVERT WITH HEADWALL	EXIST/NEW	DASHED	-	-
CULVERT WITH END SECTION	EXIST/NEW	DASHED	-	-
MONUMENT LINE	0	CONTINUOUS	-	-
CONTROL LINE	0	CONTINUOUS	-	100
MATCH LINE	0	CONTINUOUS	-	-

* UTILITIES SHOWN IN THE EXISTING TOPO SHALL BE SHOWN ON A SEPARATE LAYER SUCH AS EXWATER, EXSEWER, EXTELE, AND SO ON ALL OTHER EXISTING TOPO SHALL BE SHOWN ON LAYER EXIST.

LIST OF ABBREVIATIONS

AASHTO	AMERICAN ASSOCIATION OF STATE HIGHWAY & TRANSPORTATION OFFICIALS	FB	FULL BODY FLANGE	PC	POINT OF CURVATURE
AC	ASBESTOS CEMENT	FL	FOOTING	PI	POINT OF INTERSECTION
ASTM	AMERICAN SOCIETY FOR TESTING MATERIALS	FTG	FAR SIDE FLOW LINE	PRC	PROPOSED POINT OF REVERSE CURVATURE
AWWA	AMERICAN WATER WORKS ASSOCIATION	E	FACE OF CURB	PT	POINT OF TANGENCY
BC	BACK OF CURB	FC	FINISHED GRADE	PVC	POLYVINYL CHLORIDE
BF	BUTTERFLY	FG		PCC	PORTLAND CEMENT CONCRETE
BOW	BACK OF WALK	GV	GATE VALVE	R	RADIUS
BCR	BEGIN CURB RETURN	IRRIG	IRRIGATION	RG	RESTRAINED GLANDS
BOT	BOTTOM	L	LENGTH OF ARC LEFT	RP	RADIUS POINT
CH	CHORD	LT	LENGTH OF ARC LEFT	RR	RAIL ROAD
CAP	CORRUGATED ALUMINUM PIPE	LF	LINEAR FEET	RCP	REINFORCED CONCRETE PIPE
CDOT	COLORADO DEPARTMENT OF TRANSPORTATION	LL	LONG ARC	REQ'D	REQUIRED
CI	CAST IRON	LS	SHORT ARC	RT	RIGHT
CL	CENTER LINE	MH	MANHOLE	ROW	RIGHT OF WAY
CL or CI	CLEAR	MJ	MECHANICAL JOINT	RL	LONG RADIUS
CONC	CONCRETE	MW	MILL WRAP	RS	SHORT RADIUS
CMP	CORRUGATED METAL PIPE	N/A	NOT APPLICABLE	SCH	SCHEDULE
CSP	CORRUGATED STEEL PIPE	NS	NEAR SIDE	S	SLOPE
CG & SW	CURB, GUTTER & SIDEWALK	NIC	NOT IN CONTRACT	STA	STATION
CU	COPPER	NRCP	NON-REINFORCED CONCRETE PIPE	STL	STEEL
CL	LONG CHORD	NOP	NO ONE PERSON	(TYP)	TYPICAL
CS	SHORT CHORD	NTS	NOT TO SCALE	T	LENGTH OF TANGENT
DI	DUCTILE IRON DRIVEWAY			TC	TOP OF CURB
DR	DRIVEWAY			VC	VERTICAL CURVE
ELEC	ELECTRIC			VCP	VITRIFIED CLAY PIPE
EL or ELEV	ELEVATION			VPC	VERTICAL POINT OF CURVATURE
ECR	END CURB RETURN			VPI	VERTICAL POINT OF INTERSECTION
EP	EDGE OF PAVEMENT			VPT	VERTICAL POINT OF TANGENCY
EX	EXISTING			Δ	DELTA ANGLE

BLOCKS

BLOCK NAME	SYMBOL	BLOCK NAME
REDUCER FITTING	◄	REDUCER
CURB STOP	+	CURBSTOP
PULL BOX	⊠	PULL
TRAFFIC SIGNAL POLE	⊠	SIGNAL
SIGN OR POST	+	SIGN
TELEPHONE MANHOLE	⊙	TELEMAN
MANHOLE	○	MANHOLE
BENCH MARK	⊕	BENCH
SPRINKLER HEAD	●	HEAD
MAILBOX	□	MAILBOX
IRRIGATION PUMP	⊠	IRRIPUMP
TREE STUMP	●	STUMP
LIGHT STANDARD	⊙	LITE
FIRE HYDRANT	⊕	HYDRANT
EXISTING WATER VALVE	⊕	OVALVE
NEW WATER VALVE	⊕	VALVE
TELEPHONE CONTROL BOX	Δ	TELEBOX
POWER POLE	○	POWER
GUY WIRE ANCHOR	⊕	GUY
TREE	⊕	TREE
HEDGE OR BUSH	○	BUSH
SURVEY MARKER	⊕	MCSM
WATER METER	○	WATERMETER
WATER HYDRANT	⊕	WATERHYDRANT
PROPERTY PIN	⊕	PIN
YARD LIGHT	⊕	YLITE
CATCH BASIN	⊠	GRATE
ARROW HEAD	-	AROW
BARB WIRE FENCE SYMBOL	×	BARB
CHAIN LINK FENCE SYMBOL	◇	CHAIN
BARRIER FENCE SYMBOL	///	BARRIER
WOVEN FENCE SYMBOL	///	WOVEN
WOOD FENCE SYMBOL	•	WOOD
EXISTING GUARD RAIL POST	□	GUARD
NEW GUARD RAIL POST	•	NEWGUARD
RAILROAD TIE SYMBOL		RAIL
NORTH ARROW	SEE THIS SHEET	NORTH
BAR SCALE	SEE THIS SHEET	SCALE

ENTITY CHARACTERISTICS

ENTITY	LAYER	COLOR	TEXT STYLE	LINE TYPE
DIMENSION LINES	0	WHITE	-	CONTINUOUS
TEXT	TEXT	YELLOW	TEXT	-
SHEET TITLE	TITLE	CYAN	TITLE	-
STREET NAMES	TITLE	CYAN	TITLE	-
SUBTITLES	TITLE	CYAN	HEADINGS	-
AS BUILT INFO.	ASBLT	RED	ASBLT	-
ROW LINES	ROW	RED	-	PHANTOM
EXISTING TOPO	EXIST	251	-	CONTINUOUS
NEW CONCRETE	CONC	GREEN	-	CONTINUOUS
NEW ASPHALT	ASPH	YELLOW	-	DASHED
PROPERTY LINES	PROP	BLUE	-	PHANTOM
SHADING	HATCH	WHITE	-	HATCH
EXISTING PROFILE	EXPRO	WHITE	-	DASHED
NEW PROFILE	PROFILE	GREEN	-	CONTINUOUS
SOLID GRID	GRID1	253	-	CONTINUOUS
DOTTED GRID	GRID2	7	-	L1
EXISTING UTILITY	AS SHOWN ON PROF1999 SHEET	251	-	CONTINUOUS
NEW SEWER	SEWER	15	-	CONTINUOUS
NEW STORM SEWER	STORM	9	-	CONTINUOUS
NEW WATER	WATER	9	-	CONTINUOUS
NEW MISC.	NEW	MAGENTA	-	CONTINUOUS
SHEET BORDER	BORDER	GREEN	-	PLINE (WIDTH=1)

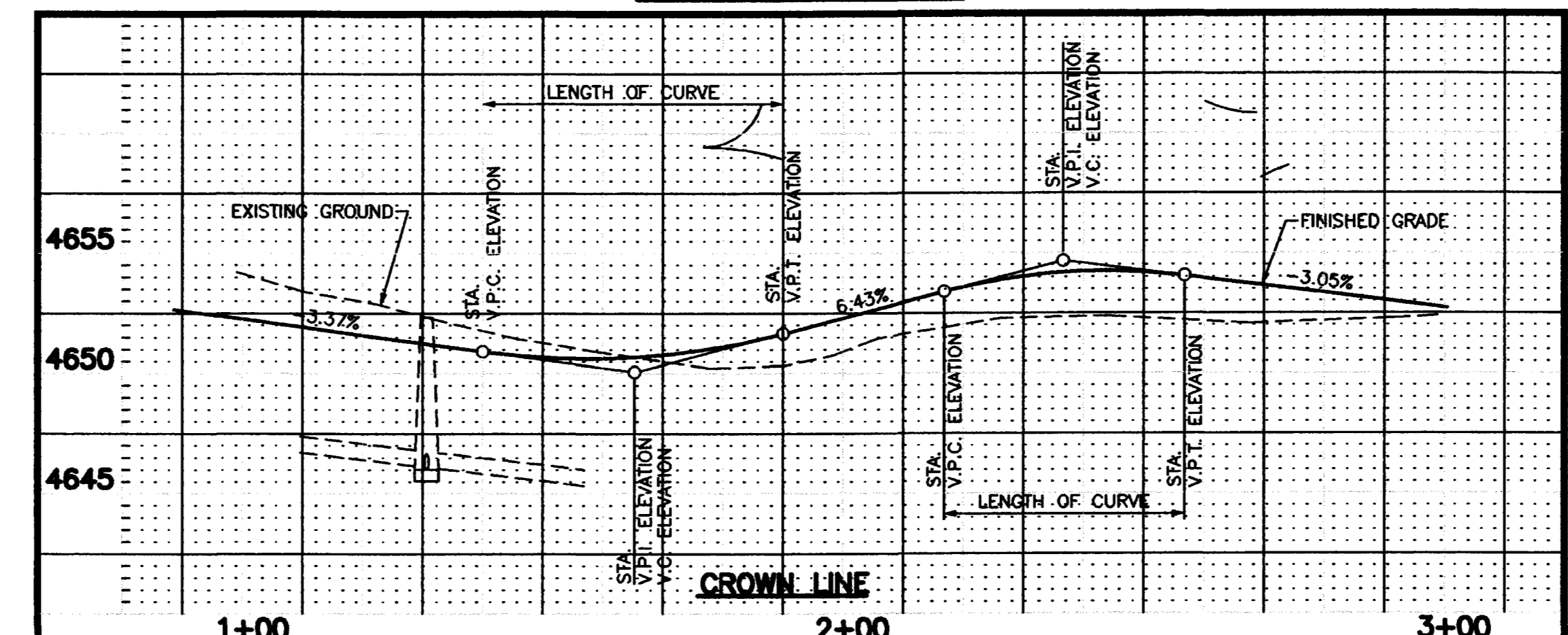
PLOTTING PARAMETERS

COLOR NAME	LINE WEIGHT (INKJET PLOTTERS)	PEN SIZE (PEN PLOTTERS)
RED	0.035	0.50
YELLOW	0.015	0.35
GREEN	0.035	0.70
CYAN	0.025	0.50
BLUE	0.010	0.25
MAGENTA	0.025	0.50
WHITE	0.015	0.25
8	0.010	0.25
9	0.035	0.70
10	-	-
11	-	-
12	-	-
13	-	-
14	-	-
15	0.035	0.70
16	0.035	0.70
251	0.015	-
253	0.015	-

SHADING LEGEND

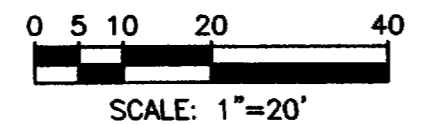
<p>BENCH MARK</p> <p>⊕ DESCRIPTION, LOCATION, AND ELEVATION</p>	<p>STYLE=DOTS, SCALE=20, ROTATION=45°</p> <p>INDICATES ASPHALT REMOVAL AND/OR REPLACEMENT</p>
<p>STYLE=ANSI31, SCALE=20, ROTATION=0°</p> <p>INDICATES CONCRETE REMOVAL AND/OR REPLACEMENT</p>	

VERTICAL CURVE DETAIL



TEXT STYLE DESCRIPTIONS

TEXT	- FONT=ROMANS, HEIGHT=2.0, WIDTH FACTOR=1.0, OBLIQUE ANGLE=0°
HEADINGS	- FONT=ROMANS, HEIGHT=3.0, WIDTH FACTOR=1.0, OBLIQUE ANGLE=0°
TITLE	- FONT=COMPLEX, HEIGHT=4.0, WIDTH FACTOR=1.2, OBLIQUE ANGLE=0°
ASBLT	- FONT=ROMANS, HEIGHT=2.0, WIDTH FACTOR=1.0, OBLIQUE ANGLE=20°



REVISION	DESCRIPTION	DATE	DRAWN BY	N.O.P.	DATE	7/28/92	SCALE
REVISION			DESIGNED BY		DATE		PLAN 1"=20' HORIZ. 1"=20'
REVISION			CHECKED BY	KADEL	DATE	7/28/92	VERT. 1"=5'
REVISION			APPROVED BY	T.A.B.	DATE	7/28/92	

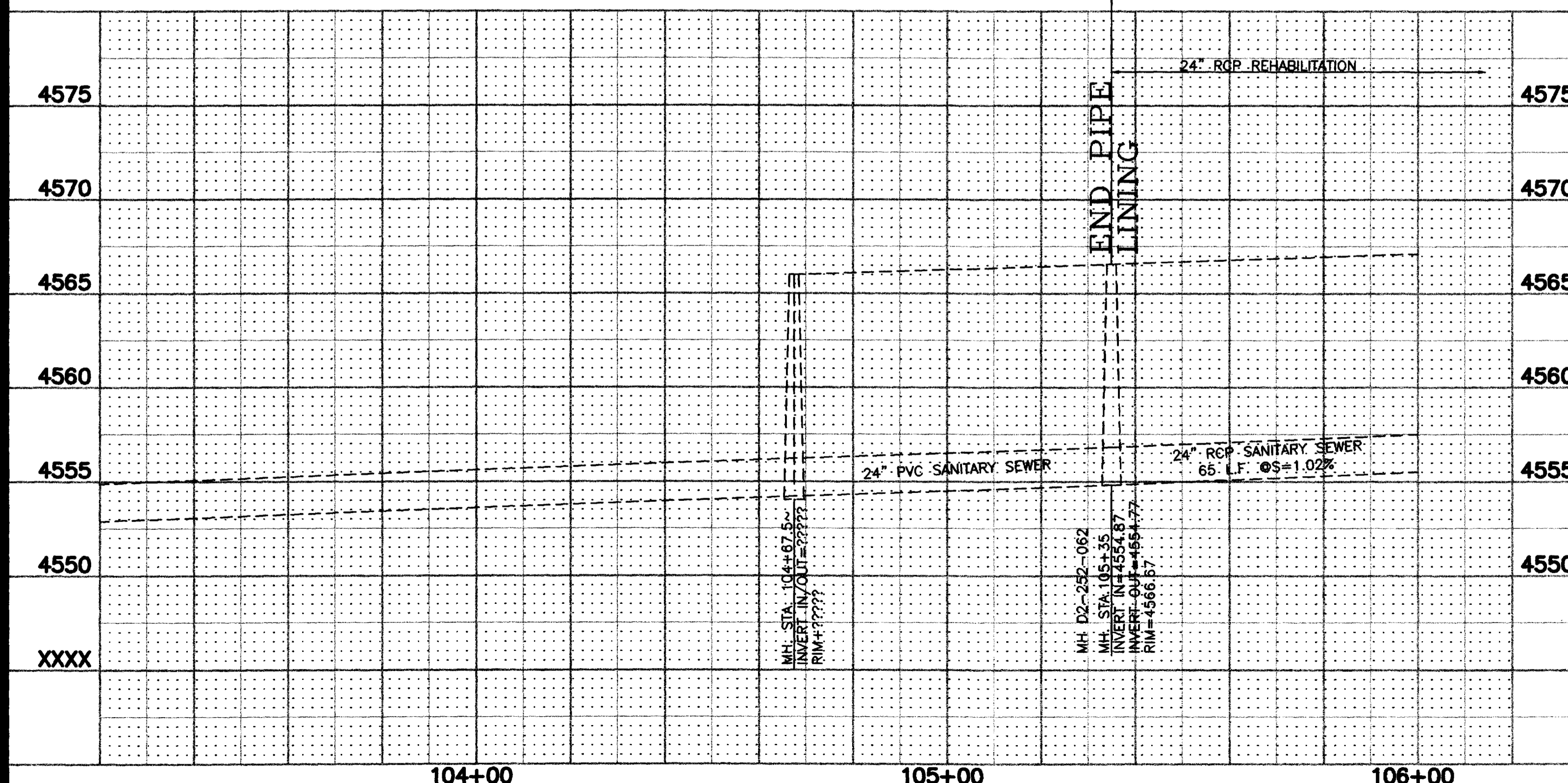
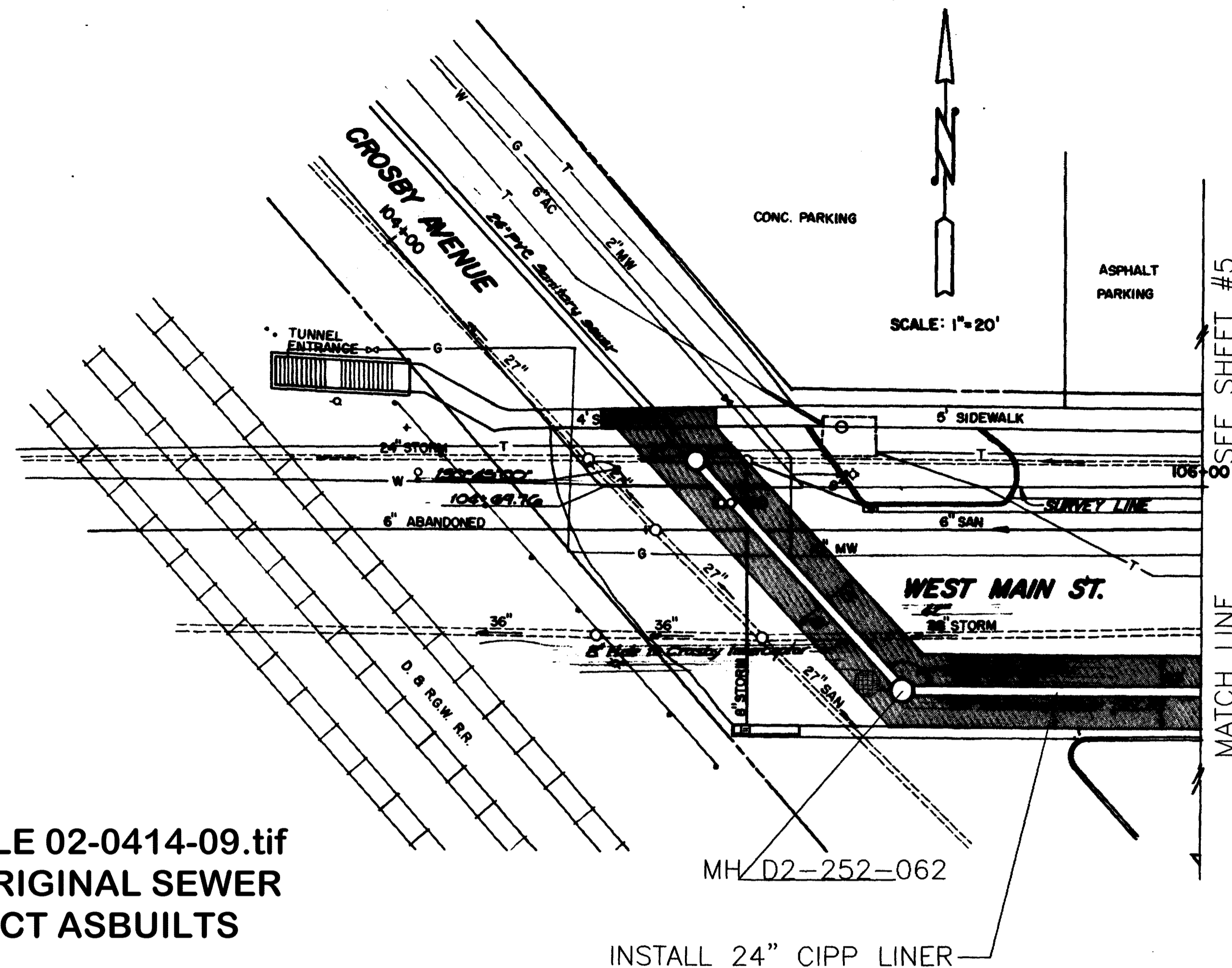
**DEPARTMENT OF PUBLIC WORKS AND UTILITIES
ENGINEERING AND TECHNICAL SERVICES DIVISIONS
CITY OF GRAND JUNCTION, COLORADO**

**COLORADO INTERCEPTOR SEWER REHABILITATION
SUB-PROJECT TITLE
Standard & Abbreviations**

SUMMARY OF APPROXIMATE QUANTITIES

Colorado Interceptor Sewer Rehabilitation
 Bid Opening 2:00 p.m., January 9, 2001
 Public Works & Utilities Executive Conference Room
 250 N 5th Street
 Grand Junction, CO

Bid Item	Description	Quantity	Units	Unit Price	Extended Price
1	24" Cured In Place Pipe (or alternative rehabilitation method), includes all materials and work necessary for installation as described in the project specifications.	2140	LF		
2	By-Pass pump sewage 12th Street to 14th Street as described in the Project Specifications (cleaning by City crews) includes traffic control as needed for by-pass pumping.	4	day		
3	Mobilization	1	LS		
4	Traffic Control	1	LS		
5	Force Account	1	LS	\$ 5,000.00	\$ 5,000.00
Total Project Cost					

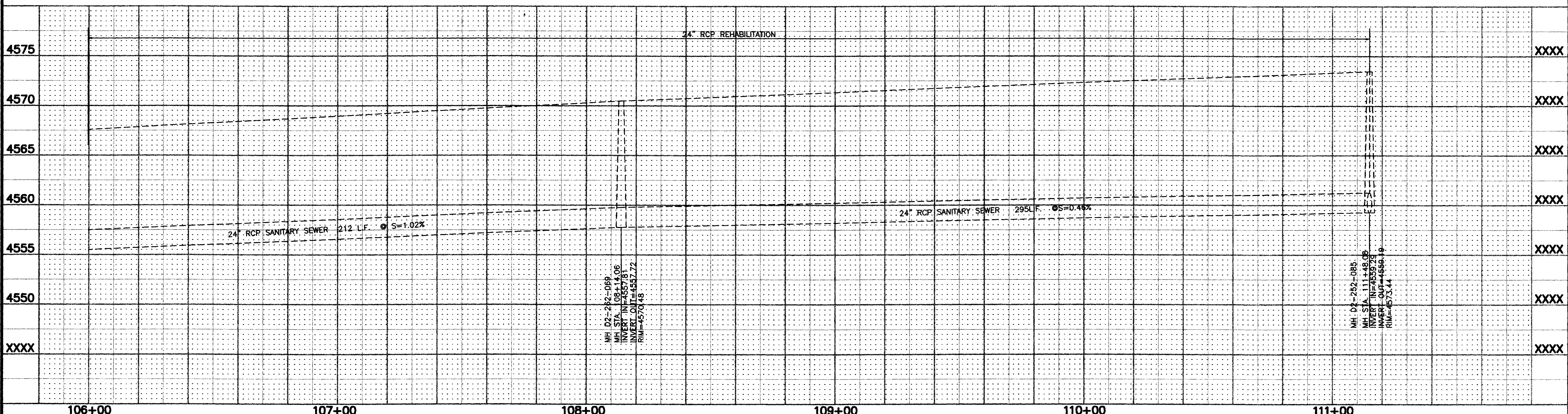
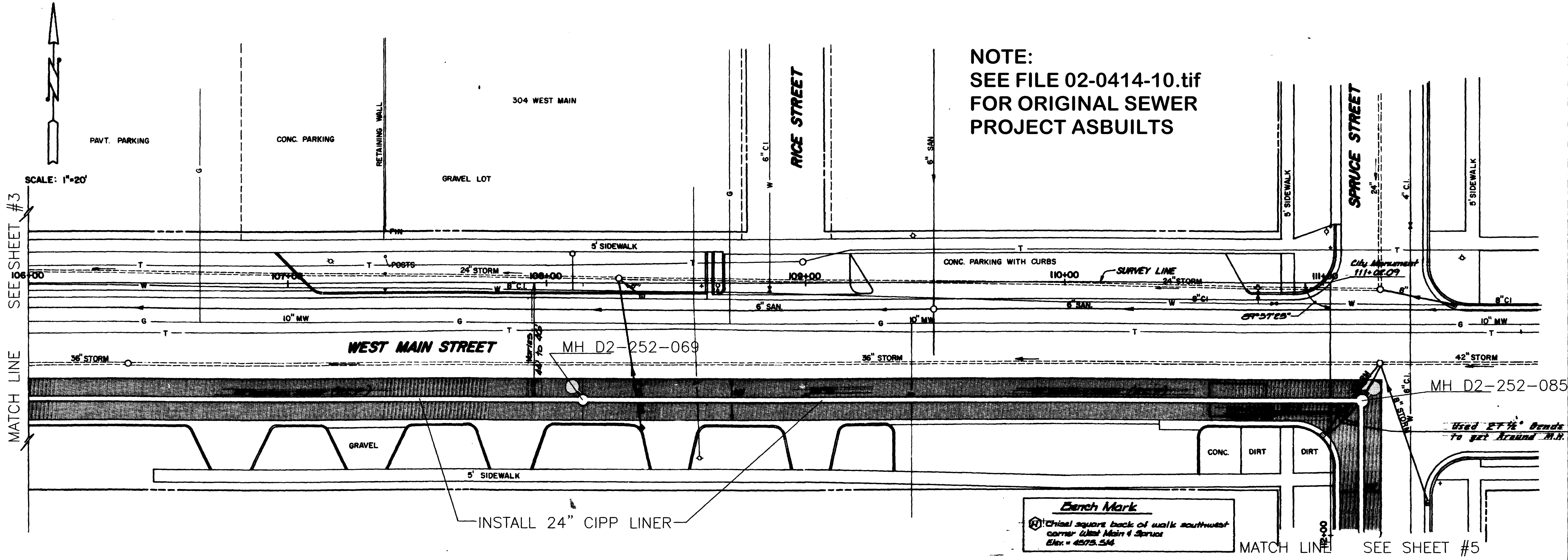


REVISION Δ _____	DATE _____	DRAWN BY _____	DATE _____	SCALE PLAN 1"=20' PROFILE 1"=20'
REVISION Δ _____	DATE _____	DESIGNED BY _____	DATE _____	
REVISION Δ _____	DATE _____	CHECKED BY _____	DATE _____	HORIZ. 1"=20' HORIZ. 1"=20' VERT. 1"=5'
REVISION Δ _____	DATE _____	APPROVED BY _____	DATE _____	

DEPARTMENT OF PUBLIC WORKS AND UTILITIES
 ENGINEERING AND TECHNICAL SERVICES DIVISIONS
 CITY OF GRAND JUNCTION, COLORADO

COLORADO INTERCEPTOR SEWER REHABILITATION
 MH D2-252-062 to D2-252-069 +
 Plan & Profile

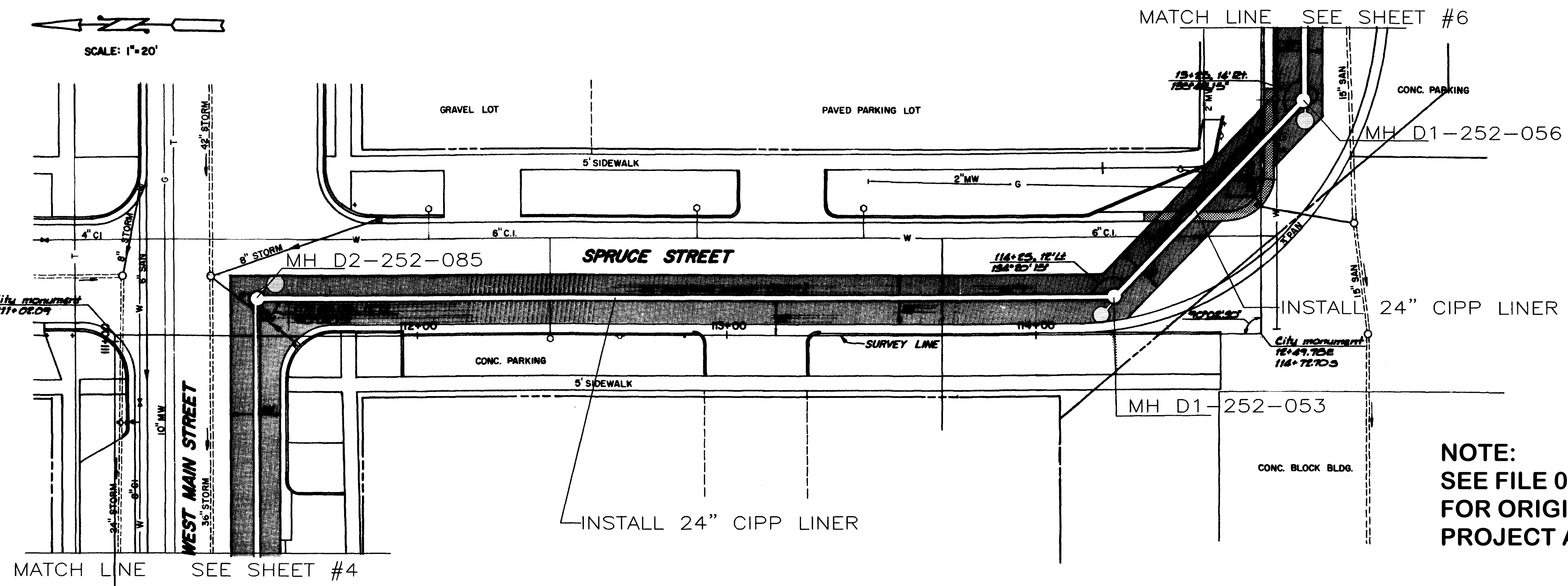
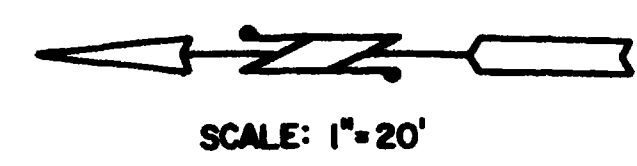
NOTE:
SEE FILE 02-0414-10.tif
FOR ORIGINAL SEWER
PROJECT ASBUILTS



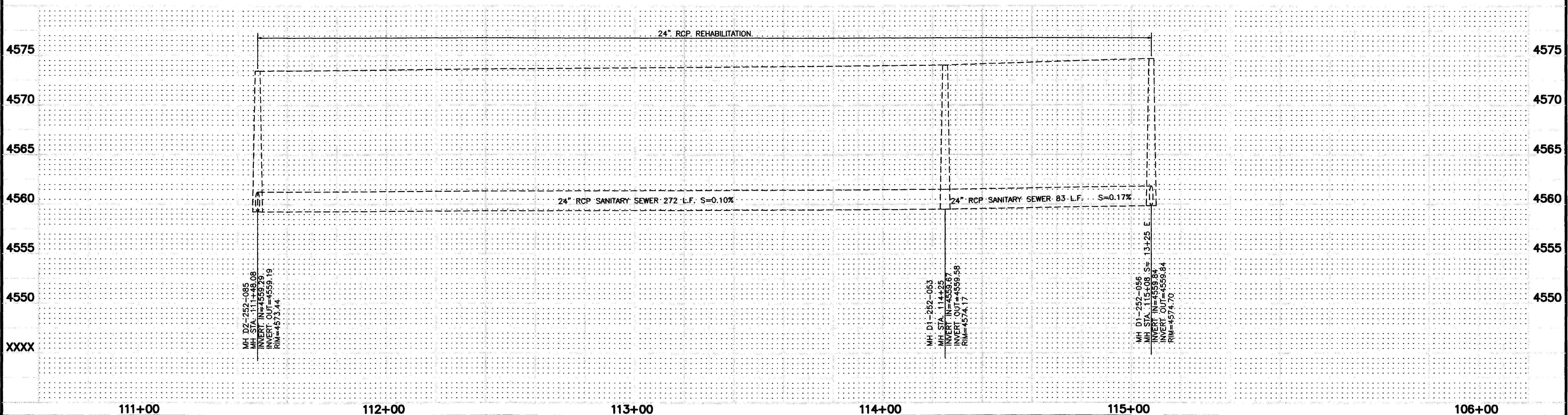
REVISION Δ	DATE	DRAWN BY	DATE	SCALE
REVISION Δ		DESIGNED BY	DATE	PLAN PROFILE
REVISION Δ		CHECKED BY	DATE	HORIZ. 1"=20' HORIZ. 1"=20'
REVISION Δ		APPROVED BY	DATE	VERT. 1"=5'

**DEPARTMENT OF PUBLIC WORKS AND UTILITIES
ENGINEERING AND TECHNICAL SERVICES DIVISIONS
CITY OF GRAND JUNCTION, COLORADO**

**COLORADO INTERCEPTOR SEWER REHABILITATION
MH D2-252-062 to MH D2-252-085
Plan & Profile**



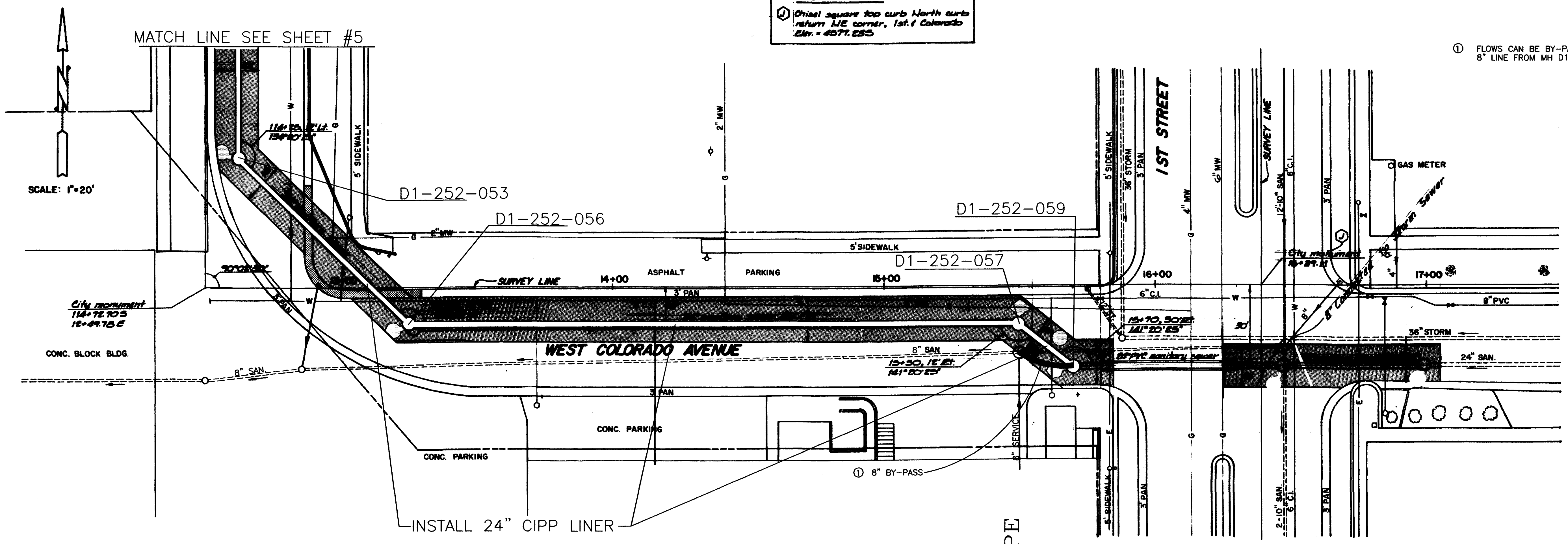
NOTE:
SEE FILE 02-0414-11.tif
FOR ORIGINAL SEWER
PROJECT ASBUILTS



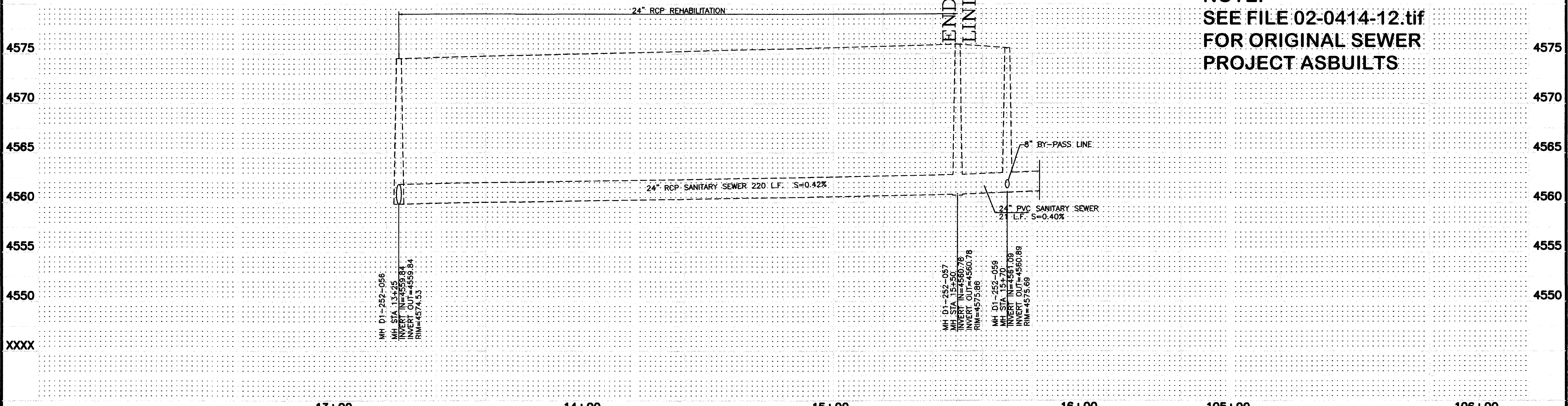
REVISION Δ REVISION Δ REVISION Δ REVISION Δ	DESCRIPTION DATE DATE DATE DATE	DRAWN BY _____ DATE _____ DESIGNED BY _____ DATE _____ CHECKED BY _____ DATE _____ APPROVED BY _____ DATE _____	SCALE PLAN 1"=20' PROFILE 1"=20' HORIZ. 1"=20' VERT. 1"=5'	DEPARTMENT OF PUBLIC WORKS AND UTILITIES ENGINEERING AND TECHNICAL SERVICES DIVISIONS CITY OF GRAND JUNCTION, COLORADO	COLORADO INTERCEPTOR SEWER REHABILITATION MH D2-252-085 to MH D1-252-056 Plan & Profile	5 OF 8
--	---	--	--	---	--	--------------

Bench Mark
 ① Chisel square top curb North curb
 at 9th & 1st corner, 1st. of Colorado
 Elev. = 4577.255

① FLOWS CAN BE BY-PASSED TO THE EXISTING
 8" LINE FROM MH D1-252-059



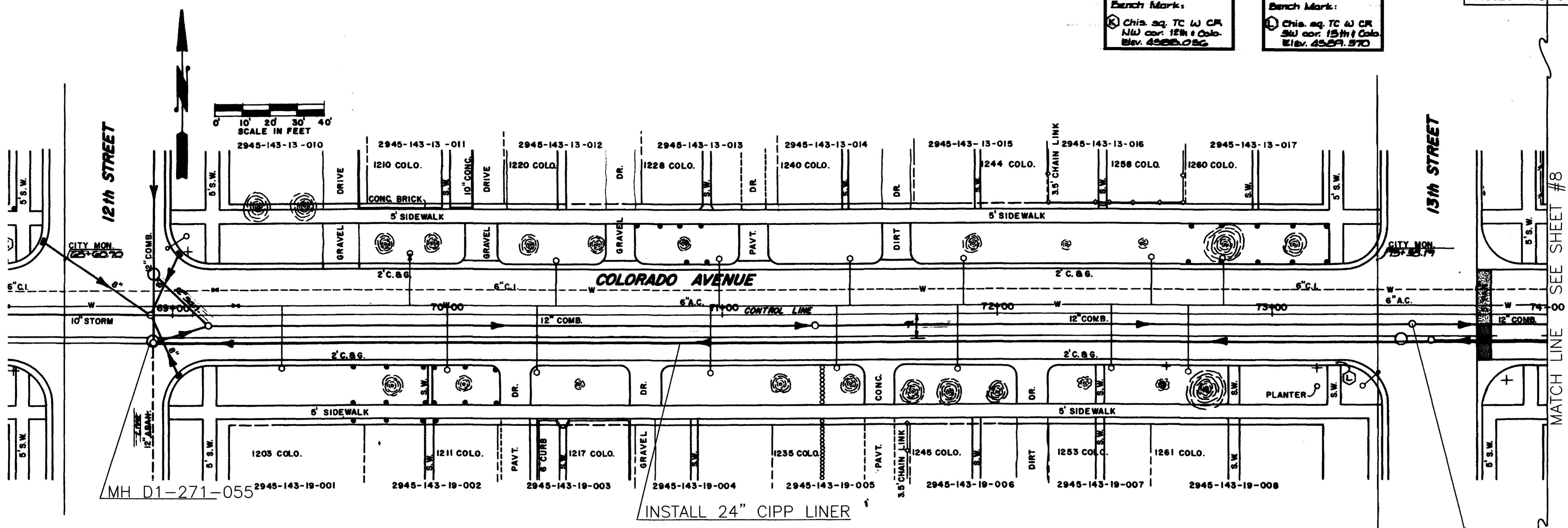
NOTE:
 SEE FILE 02-0414-12.tif
 FOR ORIGINAL SEWER
 PROJECT ASBUILTS



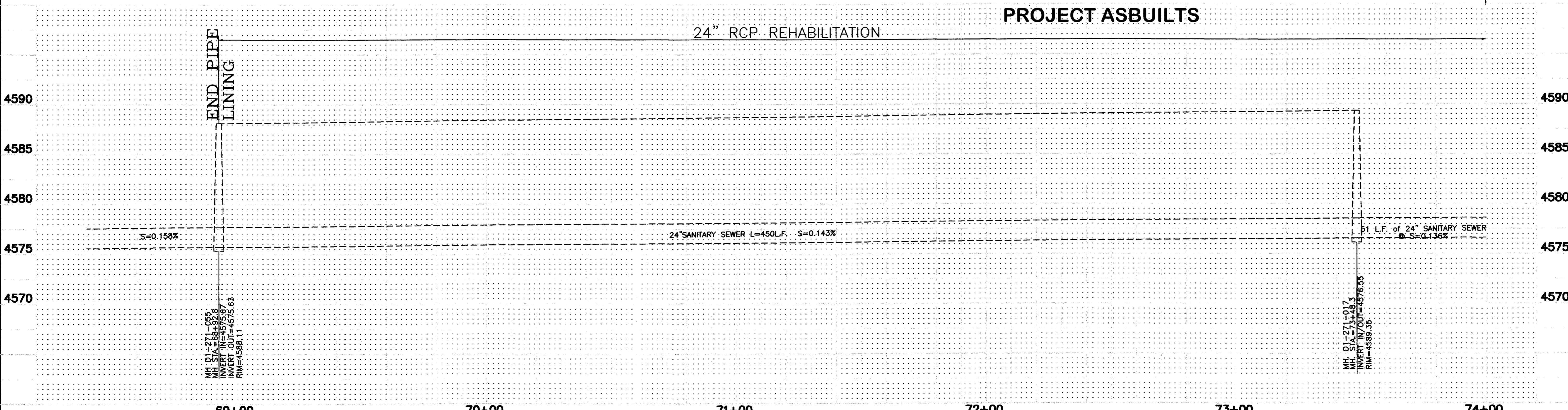
REVISION Δ _____ REVISION Δ _____ REVISION Δ _____ REVISION Δ _____	DATE _____ DATE _____ DATE _____ DATE _____	DRAWN BY _____ DATE _____ DESIGNED BY _____ DATE _____ CHECKED BY _____ DATE _____ APPROVED BY _____ DATE _____	SCALE PLAN 1"=20' PROFILE 1"=20' HORIZ. 1"=20' HORIZ. 1"=20' VERT. 1"=5'	DEPARTMENT OF PUBLIC WORKS AND UTILITIES ENGINEERING AND TECHNICAL SERVICES DIVISIONS CITY OF GRAND JUNCTION, COLORADO	COLORADO INTERCEPTOR SEWER REHABILITATION MH D1-252-056 to MH D1-252-057 Plan & Profile	6 OF 8
--	--	--	---	--	---	--------------

Bench Mark:
 Chis. sq. TC W CR
 NW cor. 12th & Colo.
 Elev. 4588.056

Bench Mark:
 Chis. sq. TC W CR
 SW cor. 13th & Colo.
 Elev. 4589.370



NOTE:
 SEE FILE 02-0404-13.tif
 FOR ORIGINAL SEWER
 PROJECT ASBUILTS



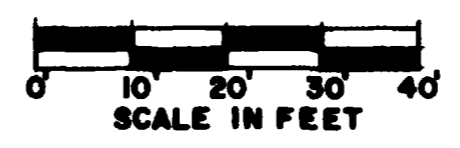
REVISION	DESCRIPTION	DATE	DRAWN BY	DATE
△				
△				
△				

SCALE	PLAN	PROFILE
	1"=20'	1"=20'
		1"=5'

**DEPARTMENT OF PUBLIC WORKS AND UTILITIES
 ENGINEERING AND TECHNICAL SERVICES DIVISIONS
 CITY OF GRAND JUNCTION, COLORADO**

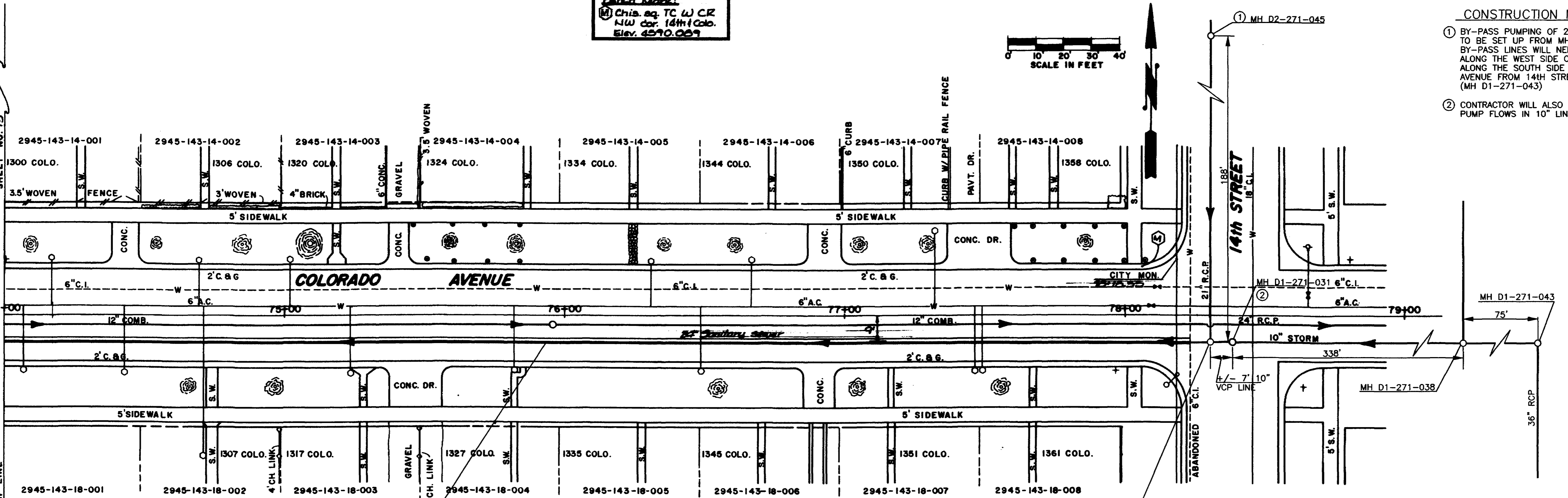
**COLORADO INTERCEPTOR SEWER REHABILITATION
 MH D1-271-055 to MH D1-271-018
 Plan & Profile**

Point Mark:
 (M) Chis. sq. TC w CR
 NW cor. 14th & Colo.
 Elev. 4570.009

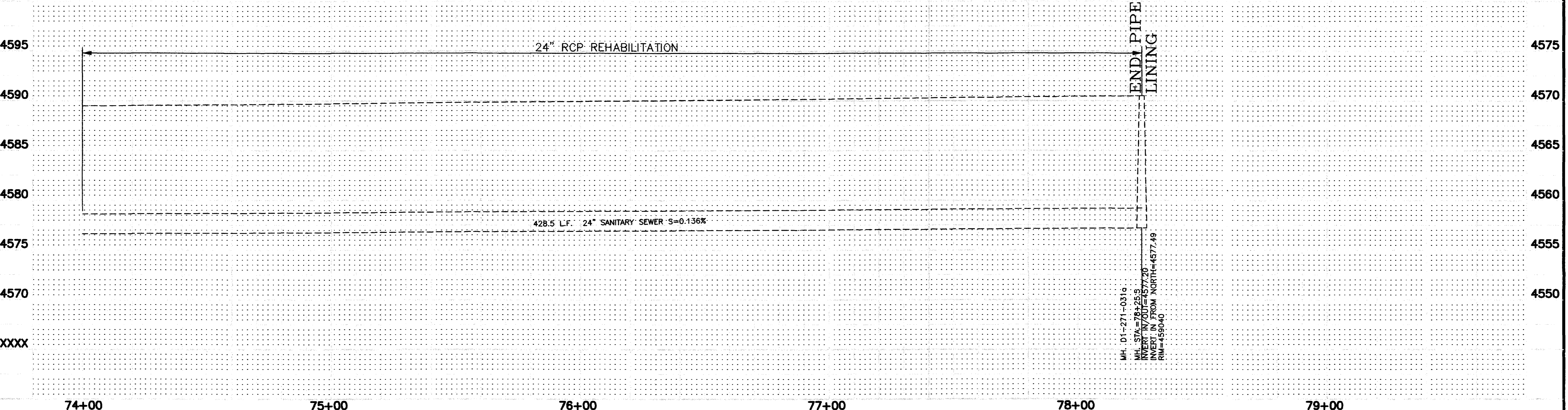


- CONSTRUCTION NOTES:**
- BY-PASS PUMPING OF 24" LINE WILL NEED TO BE SET UP FROM MH D2-271-045. THE BY-PASS LINES WILL NEED TO BE ASSEMBLED ALONG THE WEST SIDE OF COLORADO AVENUE FROM 14TH STREET TO 15TH STREET (MH D1-271-043)
 - CONTRACTOR WILL ALSO NEED TO BY-PASS PUMP FLOWS IN 10" LINE FROM THE EAST.

MATCH LINE SEE SHEET #7



NOTE:
 SEE FILE 02-0404-14.tif
 FOR ORIGINAL SEWER
 PROJECT ASBUILTS



REVISION	DESCRIPTION	DATE	DRAWN BY	DATE	SCALE
REVISION			DESIGNED BY	DATE	PLAN 1"=20' PROFILE 1"=5'
REVISION			CHECKED BY	DATE	
REVISION			APPROVED BY	DATE	

**DEPARTMENT OF PUBLIC WORKS AND UTILITIES
 ENGINEERING AND TECHNICAL SERVICES DIVISIONS
 CITY OF GRAND JUNCTION, COLORADO**

**COLORADO INTERCEPTOR SEWER REHABILITATION
 MH D1-271-018 to MH D1 271-031a
 Plan & Profile**