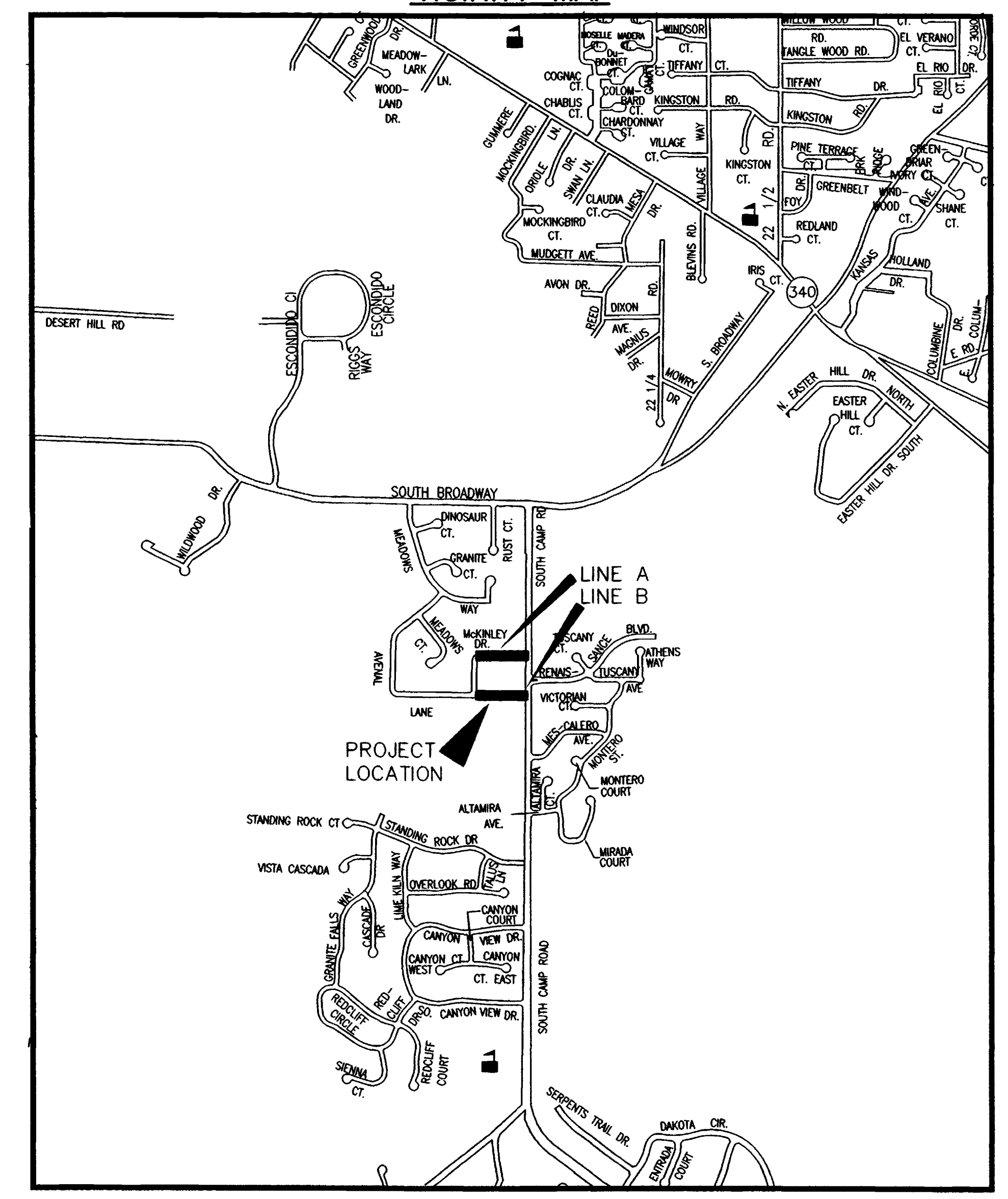


MONUMENT MEADOWS SUBDIVISION SEWER IMPROVEMENT DISTRICT FEBRUARY, 2001

- 1 ————— Cover Sheet
- 2 ————— Standard Abbreviations, Legend, and Symbols
- 3 ————— Summary of Approximate Quantities
- 4 ————— Sanitary Sewer Plan and Profiles (A Line)
- 5 ————— Sanitary Sewer Plan and Profiles (B Line)

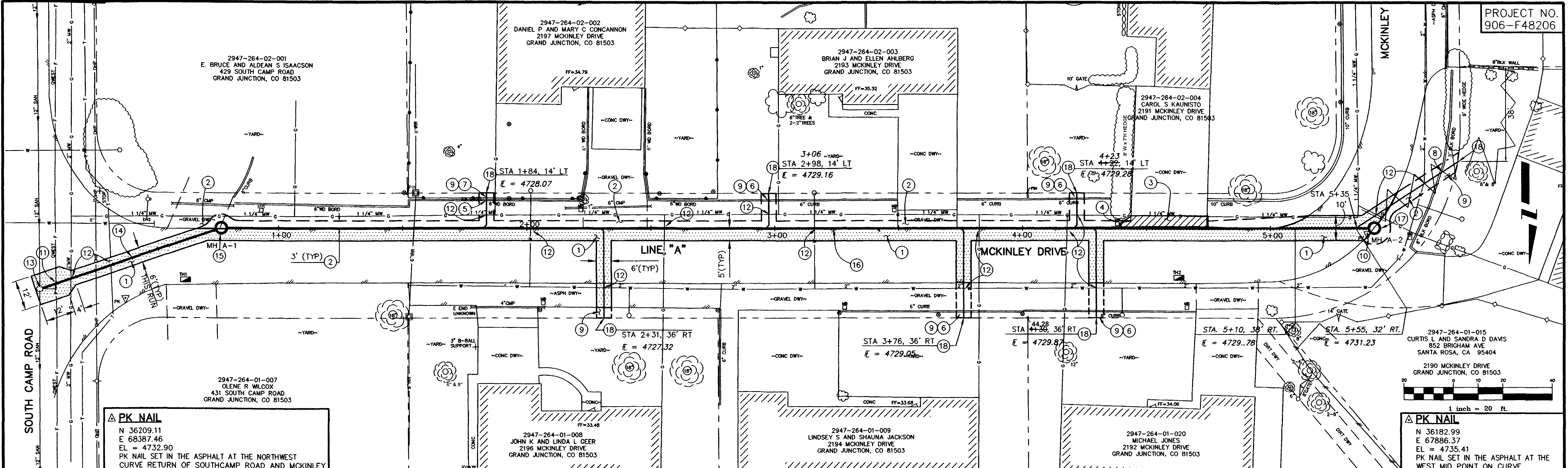


VICINITY MAP



*Department of Public Works & Utilities
Engineering and Technical Services Divisions
City of Grand Junction, Colorado*

DRAWING STATUS:	
○ PROGRESS	
○ BID SET	
○ FINAL CONSTRUCTION DRAWINGS	
● ASBUILT DRAWINGS	
APPROVED FOR CONSTRUCTION	
CITY OF GRAND JUNCTION	DATE
ACCEPTED AS CONSTRUCTED	
CITY OF GRAND JUNCTION	8/28/01 DATE



PK NAIL
 N 36209.11
 E 68387.46
 EL = 4732.90
 PK NAIL SET IN THE ASPHALT AT THE NORTHWEST CURVE RETURN OF SOUTHCAMP ROAD AND MCKINLEY

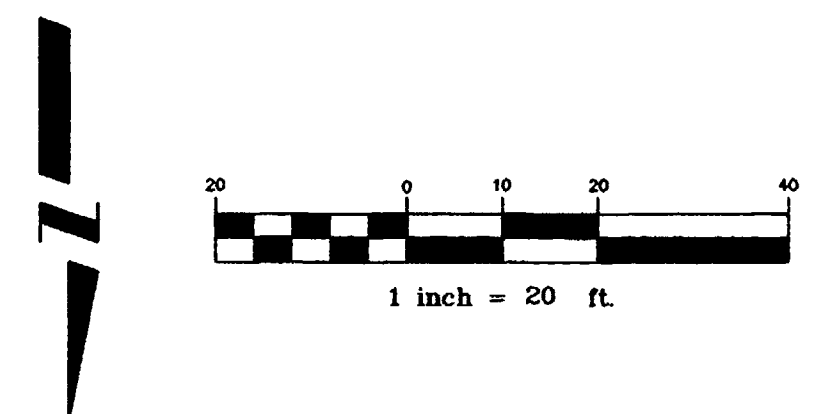
PK NAIL
 N 36182.99
 E 67886.37
 EL = 4735.41
 PK NAIL SET IN THE ASPHALT AT THE WEST MID POINT ON CURVE

STATION	DESCRIPTION	QUANTITY	UNIT	NOTES	STATION	DESCRIPTION	QUANTITY	UNIT	NOTES
0+00	ASPHALT REMOVAL JACKHAMMER OR WHEELCUT AS NECESSARY REMOVE PAVEMENT AS SHOWN	202.00	SQ YD	CONSTRUCTION NOTES: (2) 304.00 4" CL 6 AGGREGATE BASE COURSE, RESTORE GRAVEL DRIVE/SHOULDER TO LIMITS SHOWN AFTER COMPLETION OF SEWER INSTALLATION (3) 202.00 CONCRETE REMOVAL, SAWCUT CONCRETE TO CLEAN NEAT LINE AND REMOVE CONCRETE TO LIMITS AS SHOWN. (4) 210.00 CONCRETE DRIVEWAY SECTION (RESIDENTIAL) PATCH CONCRETE DRIVEWAY IN KIND AS SHOWN (4" DEPTH) (5) 210.00 RESET MAILBOX AFTER COMPLETION OF SEWER INSTALLATION. (6) 210.00 RESET WOOD LANDSCAPE BORDER AFTER COMPLETION OF SEWER INSTALLATION. (INCIDENTAL TO COST OF CONSTRUCTION) (7) 202.00 CONCRETE CURB REMOVAL - REMOVE CONCRETE CURB 3' EITHER SIDE OF NEW SEWER SERVICE LOCATION (8) 609.00 CONCRETE LANDSCAPE CURBING PATCH LANDSCAPE CURBING IN KIND. (9) 210.00 RESET WOOD FENCE (2 RAIL, SPLIT RAIL) AFTER COMPLETION OF SEWER INSTALLATION. (INCIDENTAL TO COST OF CONSTRUCTION) (10) 210.00 RESET 8" BLOCK LANDSCAPE BORDER AFTER COMPLETION OF SEWER INSTALLATION (INCIDENTAL TO COST OF CONSTRUCTION) (11) 210.00 RESTORE DECORATIVE LANDSCAPING AND OR SOIL TO PRECONSTRUCTION CONDITION (SEE BID ITEM #11) WIDTH OF DISTURBANCE TO BE LIMITED TO 4' SALVAGE AND REUSE EXISTING LANDSCAPING. (12) THE CONTRACTORS SURVEYOR SHALL BE RESPONSIBLE FOR TRANSFERING AND SETTING NEW CONTROL PRIOR TO PROJECT CONTROL BEING DISTURBED (13) NOTIFY WEST COMMUNICATIONS 48 HOURS PRIOR TO EXCAVATIONS THAT WILL EXPOSE FIBER OPTICS LINE. (14) NOTIFY UTE WATER, PUBLIC SERVICE COMPANY, WEST COMMUNICATIONS, AND OR AT&T CABLE, 48 HOURS PRIOR TO EXCAVATIONS THAT WILL EXPOSE WATER LINES (UTE), GAS OR ELECTRIC LINES (PSCO), TELEPHONE LINES (WEST), AND OR CABLE TV LINES (AT&T CABLE) (15) CONNECT PROPOSED 6" PVC SEWER LINE TO EXISTING MANHOLE WITH DROP CONNECTION. CONTRACTOR SHALL REMOVE EXISTING STUB FROM MANHOLE, INSTALL LOWER LEG OF 6" PVC DROP CONNECTION AND GROUT ANULAR SPACE. CONTRACTOR SHALL CORE HOLE FOR UPPER LEG OF 6" PVC DROP CONNECTION, INSTALL UPPER LEG OF 6" PVC DROP CONNECTION AND GROUT ANULAR SPACE. NEW INLETS SHALL BE FITTED WITH PSX GASKETS. ALL WORK SHALL BE PAID FOR UNDER BID ITEM CONNECT PROPOSED 6" PVC SEWER TO EXISTING MANHOLE (SEE CITY OF GRAND JUNCTION STANDARD DETAILS SS-04 AND "CONNECT TO EXISTING MH-DETAIL", SHEET 5) CLAY CUT OFF WALL SHALL BE PLACED 10' UPSTREAM (WEST ONLY) OF EXIST. MH. CUT OFF WALL SHALL EXTEND FROM 6" BELOW TO 6" ABOVE IMPORTED BACKFILL MATERIAL FOR THE FULL WIDTH OF THE TRENCH. IF NATIVE MATERIAL IS NOT SUITABLE THE CONTRACTOR SHALL IMPORT MATERIAL IN ACCORDANCE WITH SECTION 103.10 OF THE STANDARD CONTRACT DOCUMENTS. EXISTING GROUND OVER PROPOSED SANITARY SEWER MAIN EXISTING 2" UTE WATER (NORTH SIDE OF MCKINLEY DRIVE) (16) 6" PVC PIPE, SDR-35, L = 465 LF, BACKFILL TRENCH WITH NATIVE MATERIALS MEETING CITY SPECIFICATION 103.16 ALL SEWER LINES MUST BE TESTED IN ACCORDANCE WITH THE TECHNICAL SPECIFICATIONS OF THE CITY OF GRAND JUNCTION AND APPROVED BEFORE PAVING (17) 48" DIA. SANITARY SEWER MANHOLE (MH A-2) (1 EA) 5+42 (N 36180.57 E 67883.49) MANHOLE SHALL HAVE A PRECAST BASE WITH A DEAD END INVERT THE OUTLET OF THE MANHOLE SHALL BE FITTED WITH A PSX GASKET (SEE CITY OF GRAND JUNCTION STANDARD DETAIL SS-02) (18) ALL SERVICE LINE CONNECTIONS TO THE NEW PVC SEWER MAIN SHALL BE ACCOMPLISHED WITH FULL BODY PVC WYE FITTINGS, 4" SDR 35 PVC PIPE, AND 45° BENDS. TAPPING SADDLES WILL NOT BE ALLOWED 4" SERVICE LINE SHALL BE EXTENDED AT A 1/4" PER FOOT SLOPE GLUE CAP END OF SERVICE LINE AT LOCATION AS SHOWN ON PLAN AND MARK END OF PIPE WITH STEEL FENCE POST DRIVEN 18" BELOW PIPE BED & CUT OFF 12" BELOW SURFACE ELEVATION. CONTRACTOR SHALL HAVE THE END OF EACH SERVICE LOCATED HORIZONTALLY BY A LICENSED SURVEYOR. THE CONTRACTOR SHALL REFERENCE THE END OF SERVICE VERTICALLY PRIOR TO BACKFILLING (SEE CITY OF GRAND JUNCTION STANDARD DETAIL SS-06)	4760				
304.00	AGGREGATE BASE COURSE (CL 6) (6" DEPTH)	304.00	SQ YD		4760				
401.00	HOT BITUMINOUS ASPHALT PATCH (GR C, 50 BLOW MARSHALL) (3" DEPTH) PAVEMENT SHALL BE APPLIED IN TWO 1 1/2" LIFTS. COMPACT ASPHALT 92%-96% OF MAXIMUM THEORETICAL DENSITY CP51-96 (SEE CITY OF GRAND JUNCTION STANDARD DETAIL C-27)	401.00	SQ YD		4755				
4750	CONCRETE DRIVEWAY SECTION (RESIDENTIAL) PATCH CONCRETE DRIVEWAY IN KIND AS SHOWN (4" DEPTH)	608.00	SQ YD	4750					
4745	RESET MAILBOX AFTER COMPLETION OF SEWER INSTALLATION.	210.00	EA	4745					
4740	RESET WOOD LANDSCAPE BORDER AFTER COMPLETION OF SEWER INSTALLATION. (INCIDENTAL TO COST OF CONSTRUCTION)	210.00	EA	4740					
4735	CONCRETE CURB REMOVAL - REMOVE CONCRETE CURB 3' EITHER SIDE OF NEW SEWER SERVICE LOCATION	202.00	SQ YD	4735					
4730	CONCRETE LANDSCAPE CURBING PATCH LANDSCAPE CURBING IN KIND.	609.00	SQ YD	4730					
4725	RESET WOOD FENCE (2 RAIL, SPLIT RAIL) AFTER COMPLETION OF SEWER INSTALLATION. (INCIDENTAL TO COST OF CONSTRUCTION)	210.00	EA	4725					
4720	RESET 8" BLOCK LANDSCAPE BORDER AFTER COMPLETION OF SEWER INSTALLATION (INCIDENTAL TO COST OF CONSTRUCTION)	210.00	EA	4720					
4715	RESTORE DECORATIVE LANDSCAPING AND OR SOIL TO PRECONSTRUCTION CONDITION (SEE BID ITEM #11) WIDTH OF DISTURBANCE TO BE LIMITED TO 4' SALVAGE AND REUSE EXISTING LANDSCAPING.	210.00	SQ YD	4715					

DRAWING STATUS:
 ○ PROGRESS
 ● BID SET
 ○ FINAL CONSTRUCTION DRAWINGS

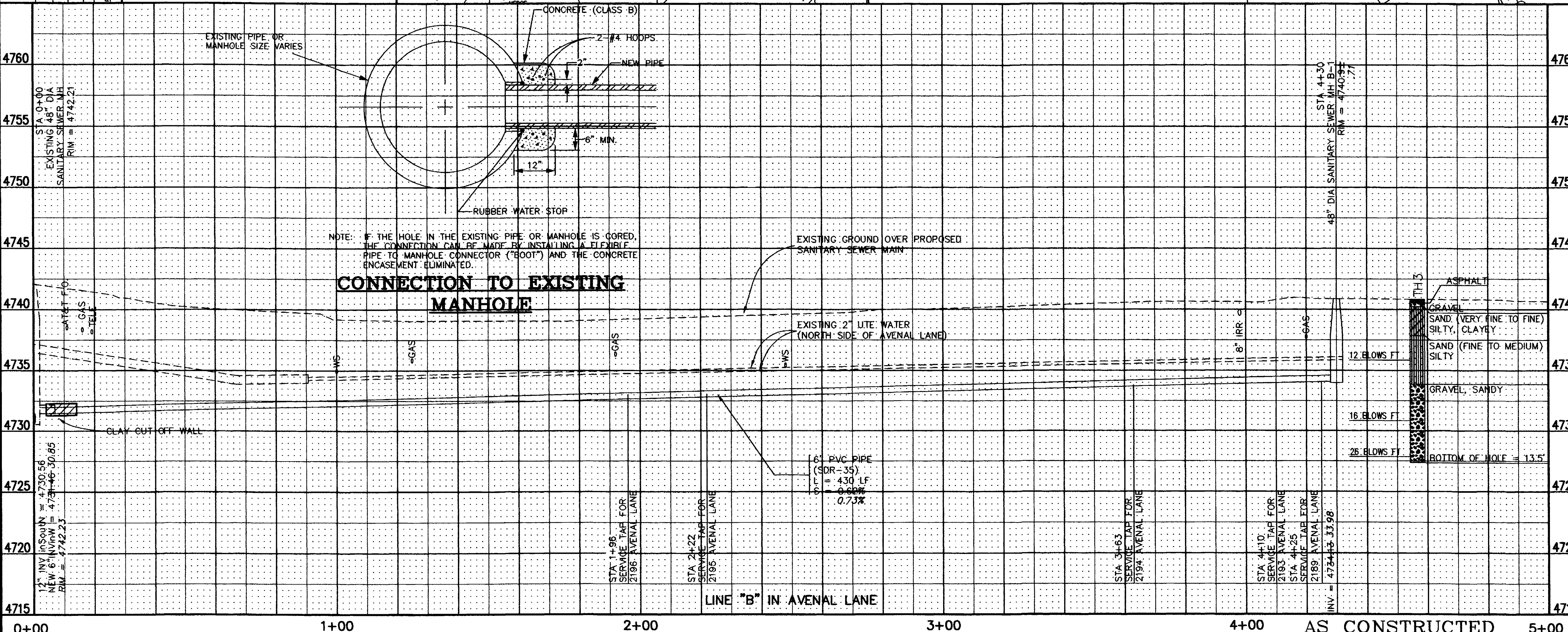
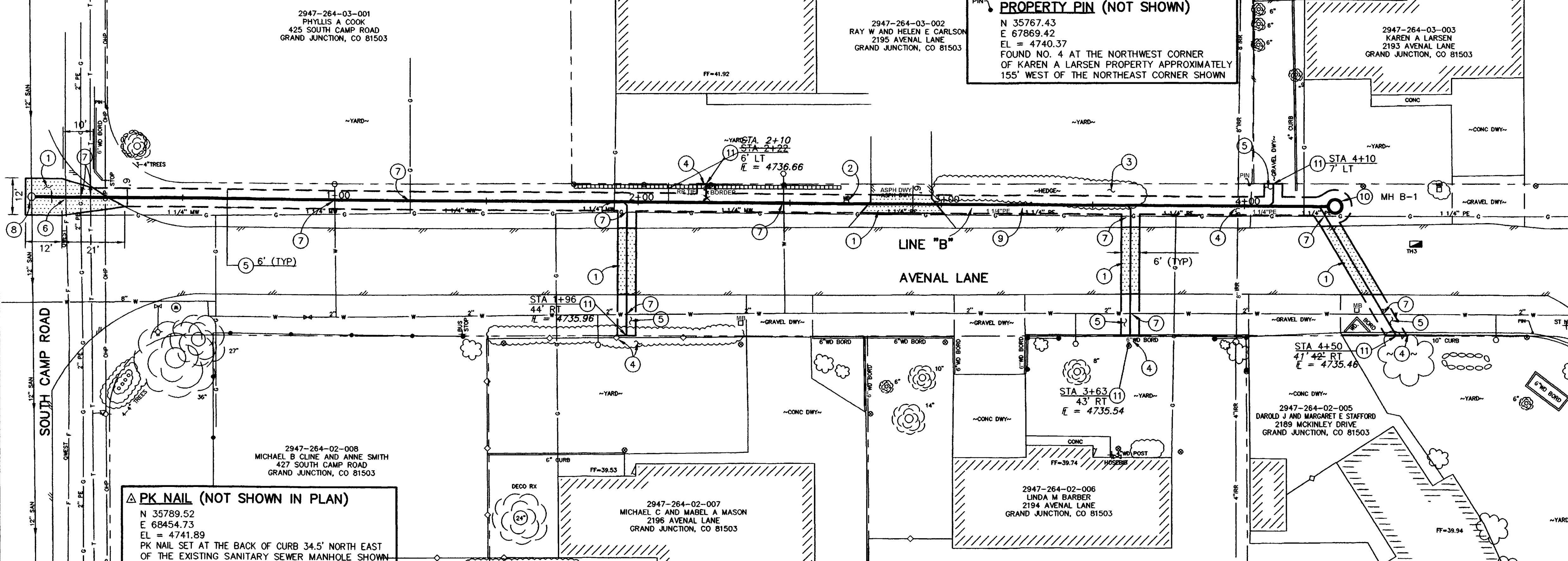
REVISION Δ _____ REVISION Δ _____ REVISION Δ _____	DESCRIPTION _____ DATE _____ DATE _____ DATE _____	DRAWN BY JCS DATE 2001 DESIGNED BY JCS/SBG DATE 2001 CHECKED BY SBG DATE 2001 APPROVED BY _____ DATE _____	SCALE PLAN 1"=20' PROFILE 1"=5'	DEPARTMENT OF PUBLIC WORKS AND UTILITIES ENGINEERING AND TECHNICAL SERVICES DIVISIONS CITY OF GRAND JUNCTION, COLORADO	MONUMENT MEADOWS SUBDIVISION SEWER IMPROVEMENT DISTRICT SANITARY SEWER PLAN AND PROFILES LINE "A", STA 0+00 TO STA 5+42	4
--	---	---	---------------------------------------	--	--	---

DRAWING STATUS:
 ○ PROGRESS
 ● BID SET
 ○ FINAL CONSTRUCTION DRAWINGS



CONSTRUCTION NOTES

- 1 202.00 ASPHALT REMOVAL JACKHAMMER OR WHEELCUT AS NECESSARY. REMOVE PAVEMENT AS SHOWN.
- 304.00 AGGREGATE BASE COURSE (CL 6) (6" DEPTH)
COMPACT BASE COURSE TO 95% AASHTO T-180. SUBGRADE SHALL BE COMPACTED TO 95% AASHTO T-180.
- 401.00 HOT BITUMINOUS ASPHALT PATCH (GR C, 50 BLOW MARSHALL) (3" DEPTH)
PAVEMENT SHALL BE APPLIED IN TWO 1 1/2" LIFTS. COMPACT ASPHALT 92%-96% OF MAXIMUM THEORETICAL DENSITY CP51-96. (SEE CITY OF GRAND JUNCTION STANDARD DETAIL C-27)
- 2 210.00 RESET MAILBOX AFTER COMPLETION OF SEWER CONSTRUCTION. PROVIDE TEMPORARY MAILBOX LOCATION DURING CONSTRUCTION. NO EXTRA PAY
- 3 202.00 TRIM AND REMOVE MINIMAL AMOUNT OF HEDGE AS NEEDED TO CONSTRUCT NEW SEWER. SHALL BE INCIDENTAL TO COST OF CONSTRUCTION. CONTRACTOR SHALL COORDINATE WITH PROPERTY OWNER PRIOR TO TRIMMING.
- 4 PROTECT EXISTING CURB, LANDSCAPE BORDER, FENCE, SHRUB, AND/OR IRRIGATION LINE IN PLACE.
- 5 304.00 4" CL 6 AGGREGATE BASE COURSE. RESTORE GRAVEL DRIVE/SHOULDER TO LIMITS SHOWN AFTER COMPLETION OF SEWER INSTALLATION.
- 6 NOTIFY QWEST COMMUNICATIONS 48 HOURS PRIOR TO EXCAVATIONS THAT WILL EXPOSE FIBER OPTICS LINE.
- 7 NOTIFY UTE WATER, PUBLIC SERVICE COMPANY, QWEST COMMUNICATIONS, AND OR AT&T CABLE, 48 HOURS PRIOR TO EXCAVATIONS THAT WILL EXPOSE WATER LINES (UTE), GAS OR ELECTRICAL LINES (PSCO), TELEPHONE LINES (QWEST), AND OR CABLE TV LINES (AT&T CABLE)
- 8 210.00 CONNECT PROPOSED 6" PVC SEWER LINE TO EXISTING MANHOLE. CONTRACTOR SHALL REMOVE EXISTING STUB FROM MANHOLE, INSTALL NEW 6" PVC SEWER INTO EXISTING MANHOLE, AND GROUT ANNULAR SPACE TO PROVIDE A LEAK PROOF SEAL.
NEW INLET SHALL BE FITTED WITH A PSX GASKET. ALL WORK SHALL BE PAID FOR UNDER BID ITEM CONNECT PROPOSED 6" PVC SEWER TO EXISTING MANHOLE. (SEE CITY OF GRAND JUNCTION STANDARD DETAILS SS-04 AND "CONNECTION TO EXISTING MANHOLE DETAIL" THIS SHEET)
- 102.11 CLAY CUT OFF WALL SHALL BE PLACED 10' UPSTREAM (WEST ONLY) OF EXIST. MH. CUT OFF WALL SHALL EXTEND FROM 6" BELOW TO 6" ABOVE IMPORTED BACKFILL MATERIAL FOR THE FULL WIDTH OF THE TRENCH. IF NATIVE MATERIAL IS NOT SUITABLE, THE CONTRACTOR SHALL IMPORT MATERIAL IN ACCORDANCE WITH SECTION 103.10 OF THE STANDARD CONTRACT DOCUMENTS.
- 9 102.90 6" PVC PIPE, SDR-35, L = 430.00 LF, BACKFILL TRENCH WITH NATIVE MATERIALS MEETING CITY SPECIFICATION 103.16. ALL SEWER LINES MUST BE TESTED IN ACCORDANCE WITH THE TECHNICAL SPECIFICATIONS OF THE CITY OF GRAND JUNCTION AND APPROVED BEFORE PAVING.
- 10 102.11 48" DIA. SANITARY SEWER MANHOLE (MH B-1) (1 EA) 4+30 (N 35773.71 E 67995.53) MANHOLE SHALL HAVE A PRECAST BASE WITH A DEAD END INVERT. THE OUTLET OF THE MANHOLE SHALL BE FITTED WITH A PSX GASKET (SEE CITY OF GRAND JUNCTION STANDARD DETAIL SS-02)
- 11 102.90 ALL SERVICE LINE CONNECTIONS TO THE NEW PVC SEWER MAIN SHALL BE ACCOMPLISHED WITH FULL BODY PVC WYE FITTINGS, 4" SDR 35 PVC PIPE, AND 45° BENDS. TAPPING SADDLES WILL NOT BE ALLOWED. 4" SERVICE LINE SHALL BE EXTENDED AT A 1/4" PER FOOT SLOPE. GLUE CAP END OF SERVICE LINE AT LOCATION AS SHOWN ON PLAN AND MARK END OF PIPE WITH STEEL FENCE POST DRIVEN 18" BELOW PIPE BED AND CUT OFF 12" BELOW SURFACE ELEVATION. CONTRACTOR SHALL HAVE THE END OF EACH SERVICE LOCATED HORIZONTALLY BY A LICENSED SURVEYOR. THE CONTRACTOR SHALL REFERENCE THE END OF SERVICE VERTICALLY PRIOR TO BACKFILLING. (SEE CITY OF GRAND JUNCTION STANDARD DETAIL SS-06)



REVISION	DESCRIPTION	DATE	DRAWN BY	DATE	SCALE
REVISION Δ			JCS	2001	PLAN 1"=20'
REVISION Δ			JCS/SBG	2001	PROFILE 1"=20'
REVISION Δ			SBG	2001	HORIZ. 1"=20'
REVISION Δ					VERT. 1"=5'

**DEPARTMENT OF PUBLIC WORKS AND UTILITIES
 ENGINEERING AND TECHNICAL SERVICES DIVISIONS
 CITY OF GRAND JUNCTION, COLORADO**

**MONUMENT MEADOWS SUBDIVISION
 SEWER IMPROVEMENT DISTRICT
 SANITARY SEWER PLAN AND PROFILES
 LINE "B", STA 0+00 TO STA 5+00**