

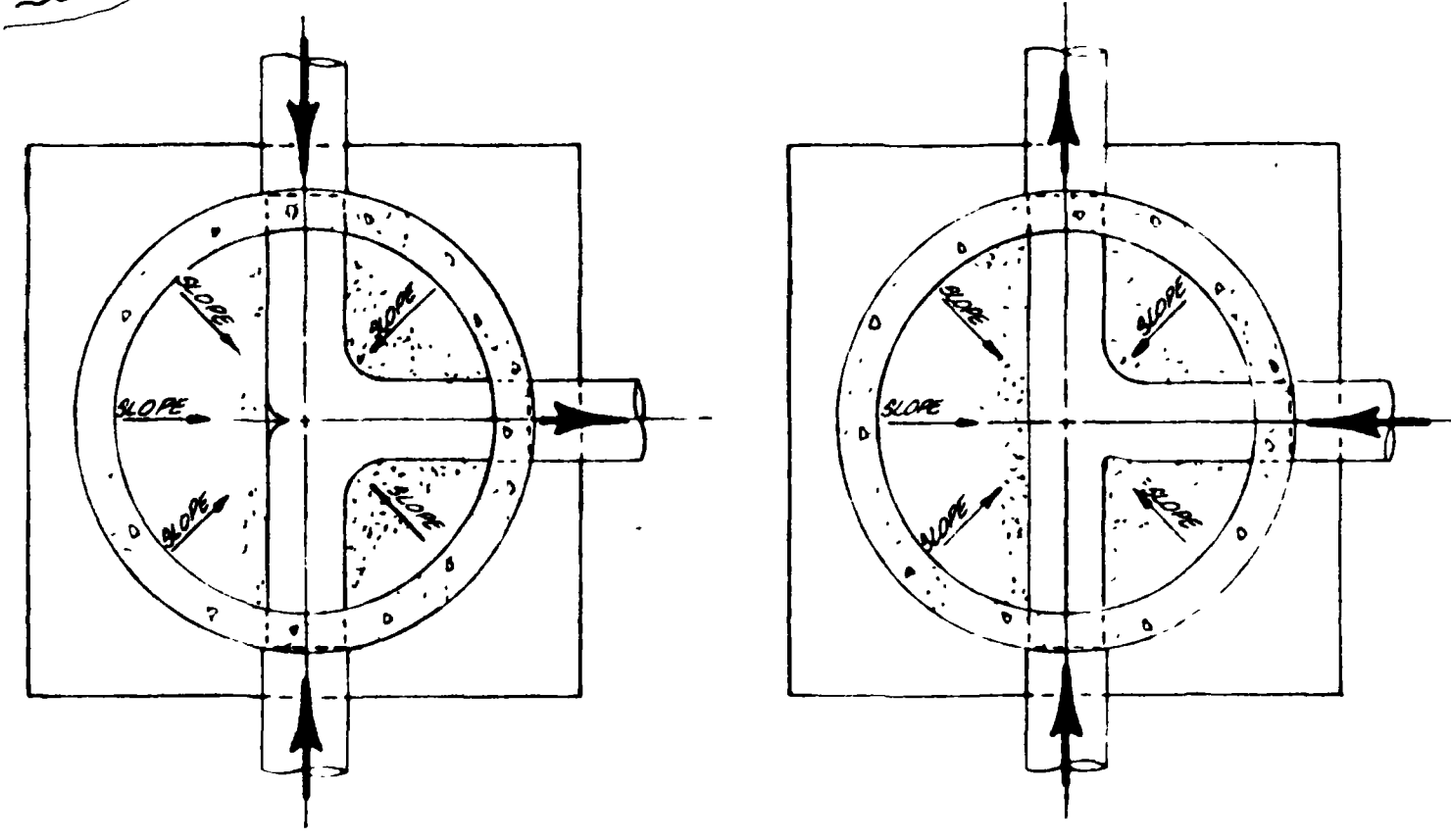
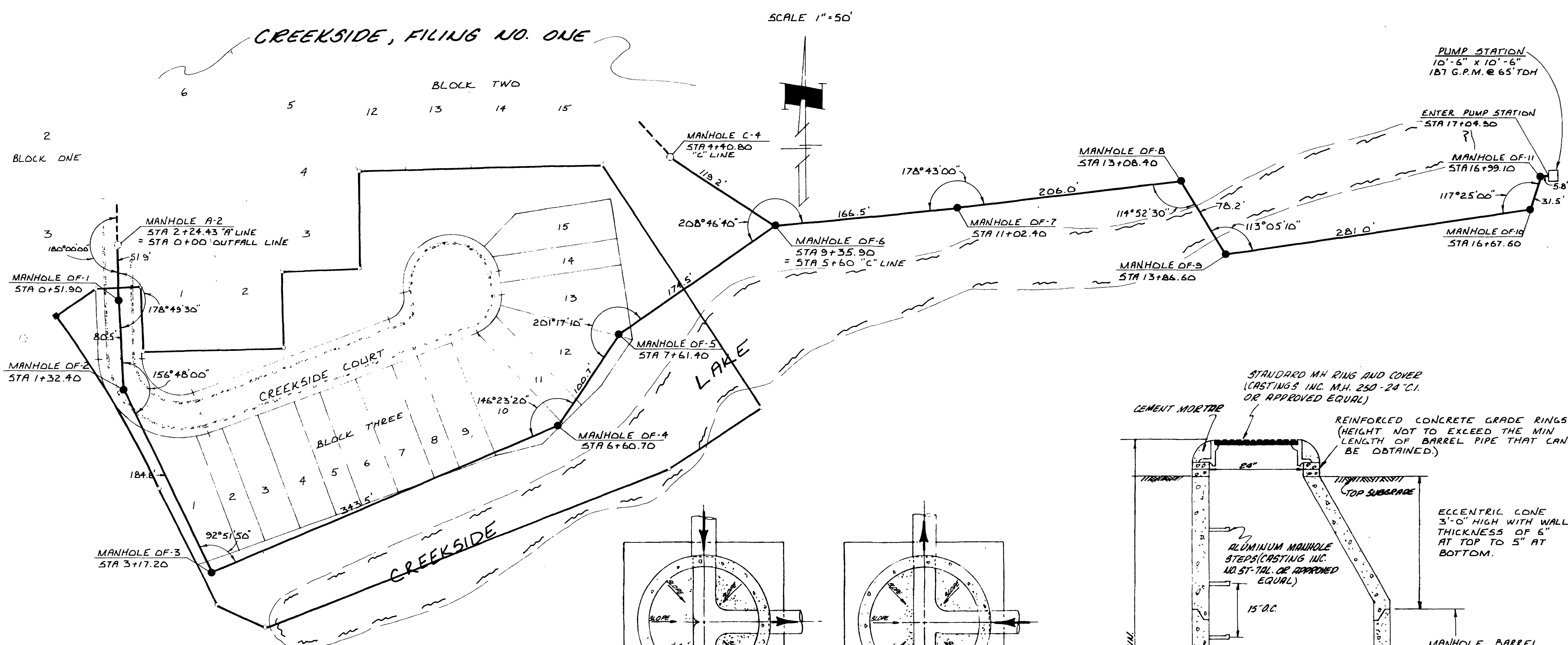
CHECKED	
DATE	Sept 1977
SCALE	As Shown
REVISIONS	BY
5-B1 As-Built	

PARAGON ENGINEERING, INC.
 P.O. Box 2872
 Grand Junction, Colorado 81501 (303) 243-9888

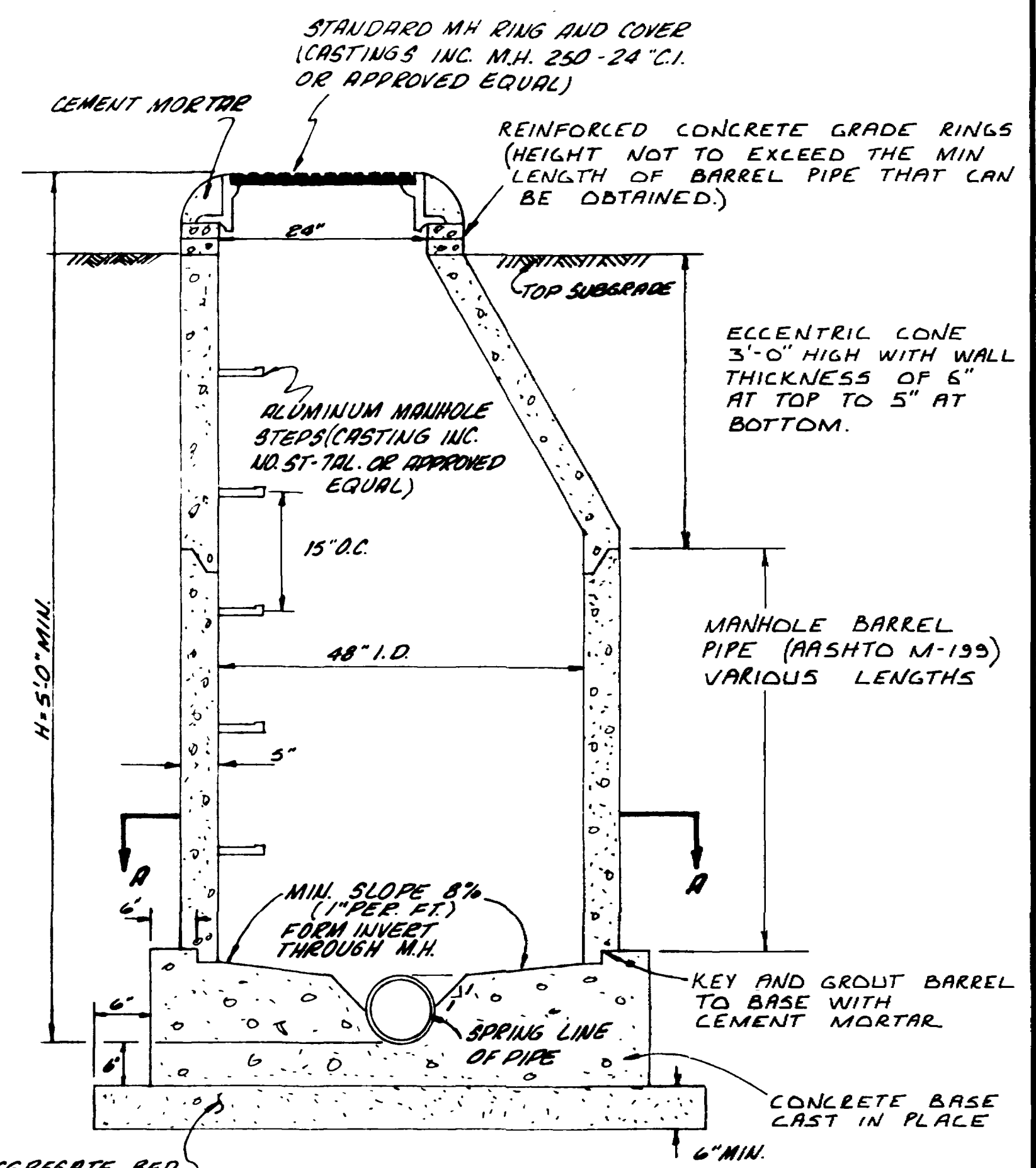


CREEKSIDE, FILING NO. TWO
 MESA COUNTY, COLORADO
 OUTFALL LINE

SHEET	1
OF	2



T JUNCTION SECTION A-A Y JUNCTION

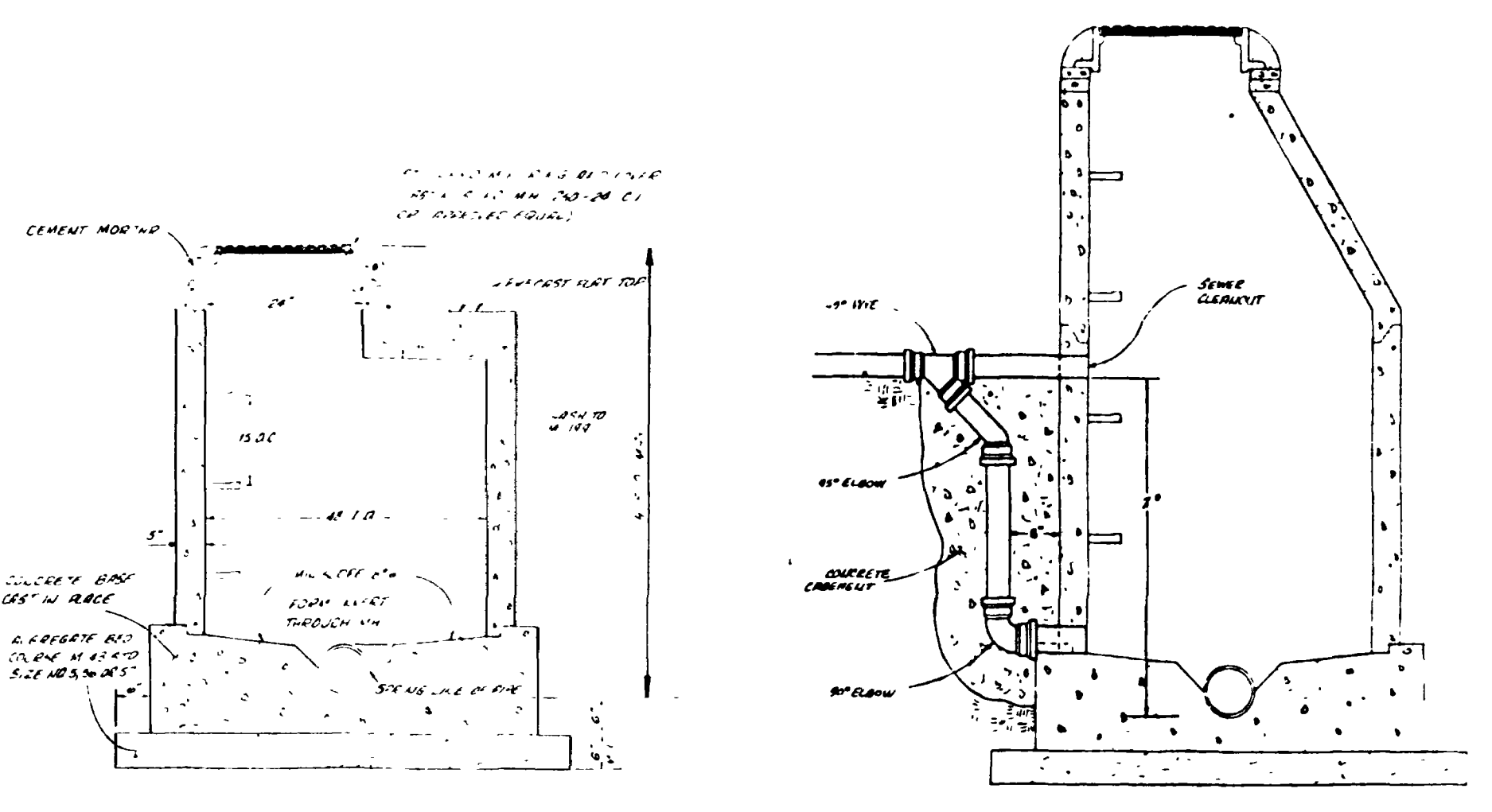


STANDARD MANHOLE

AGGREGATE BED COURSE (ASHTO M-43 STD. SIZE NO. 5, 56 OR 57)

- NOTES:
1. Top of eccentric cone to be set at top of subgrade. (Street contractor to set rim to finished grade of street).
 2. All sewer construction to be done in accordance with the Panorama Improvement District Specifications.
 3. All construction to be done in accordance with the Colorado Department of Health Specifications.
 4. Contractor is responsible for locating all buried utilities and protecting the same. If vertical and horizontal clearances are less than state minimums, then concrete encasement may be required on sewer lines where water mains are less than proximity requirements.
 5. All sewer services to extend 10' beyond property line.
 6. All water services to be located on property line.
 7. All water line construction to be done according to the Water Conservancy District Specifications.

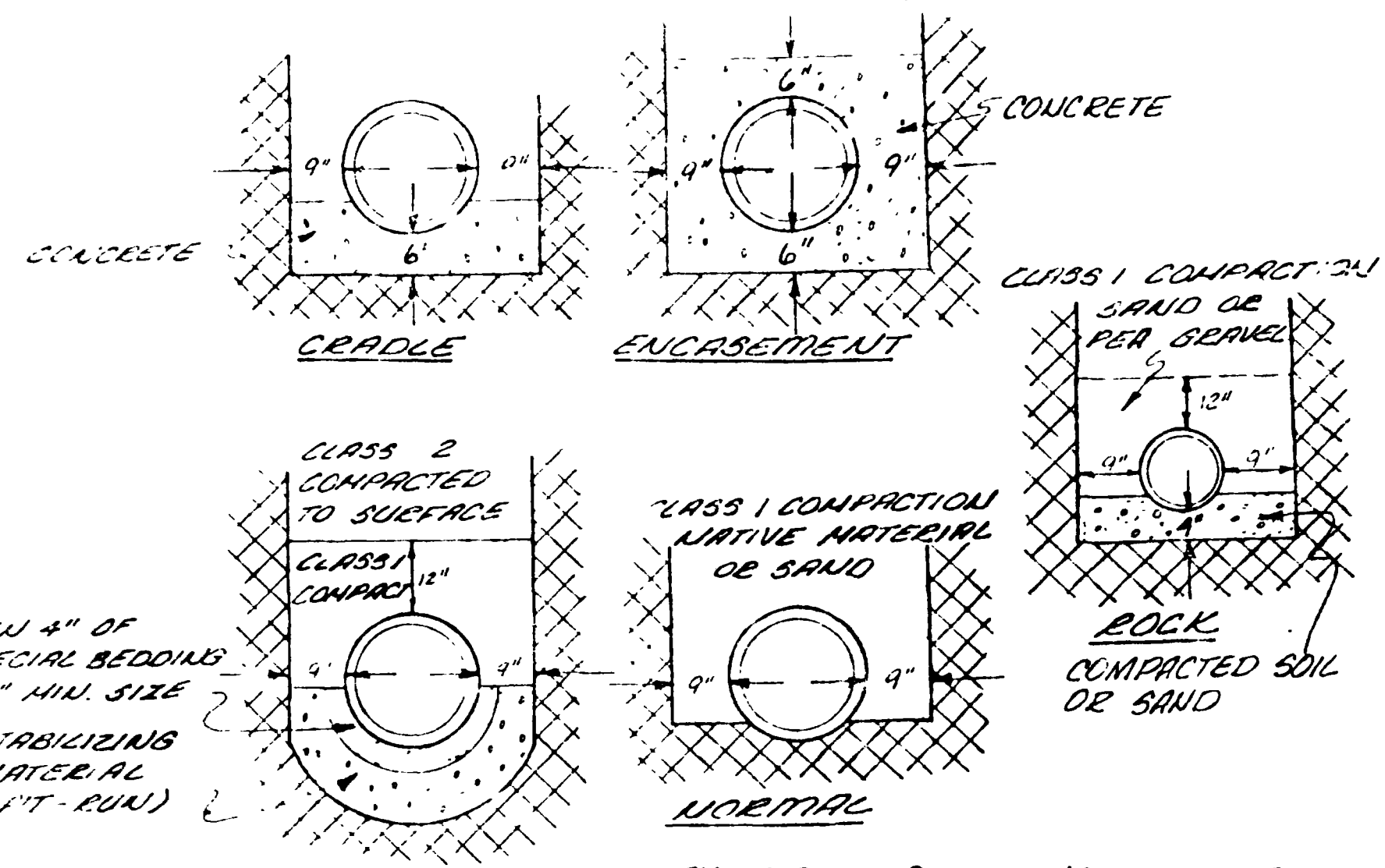
- QUANTITIES**
- 1745.9 L.F. 8" SANITARY SEWER
 - 78.2 L.F. DUCTILE IRON (8")
 - 4 STANDARD MANHOLES
 - 5 STANDARD SHALLOW MANHOLES
 - 2 DROP MANHOLES



STANDARD SHALLOW MANHOLE

DROP MANHOLE

* OUTSIDE DROP REQUIRED WHEN X IS GREATER THAN 20" WHEN X IS LESS THAN 24" FORM CONCRETE INVERT FROM PIPE TO 6" MANHOLE



TYPICAL BEDDING DETAIL


N.T.S. HAND DIG FOR BELL OR COUPLING

CHECKED

DATE
MAY 1981
SCALE
1" = 5' VERT.
1" = 50' HORIZ.

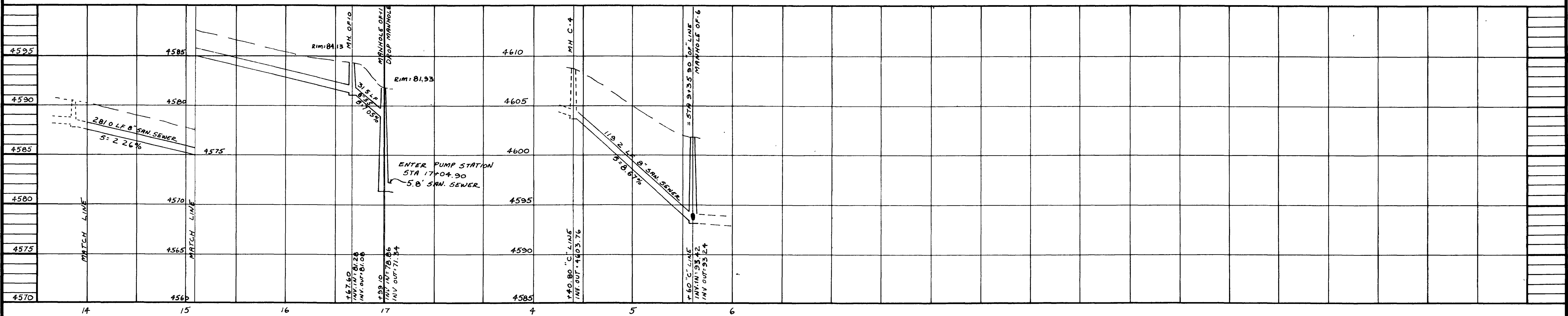
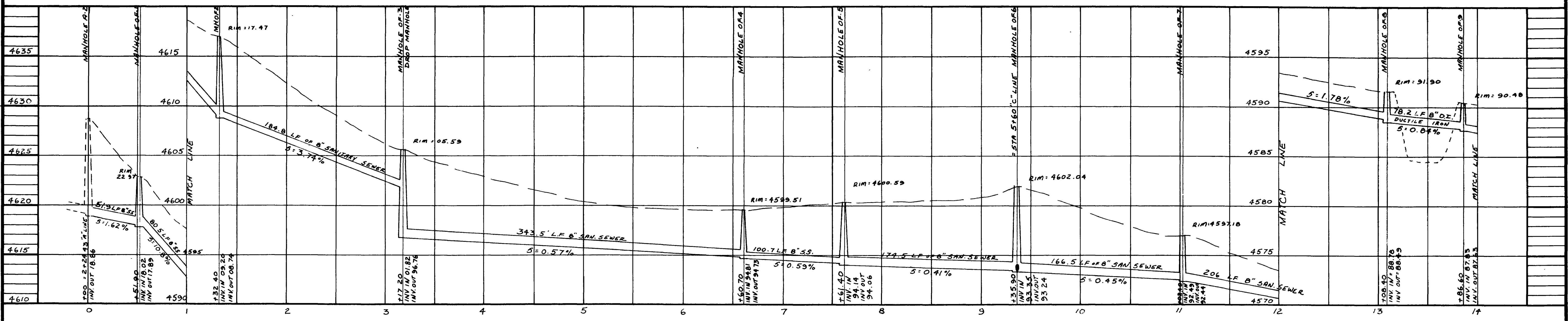
REVISIONS	BY
AS BUILT 5/81	

PARAGON ENGINEERING, INC.
P.O. Box 2872
Grand Junction, Colorado 81501 (303) 243-8986

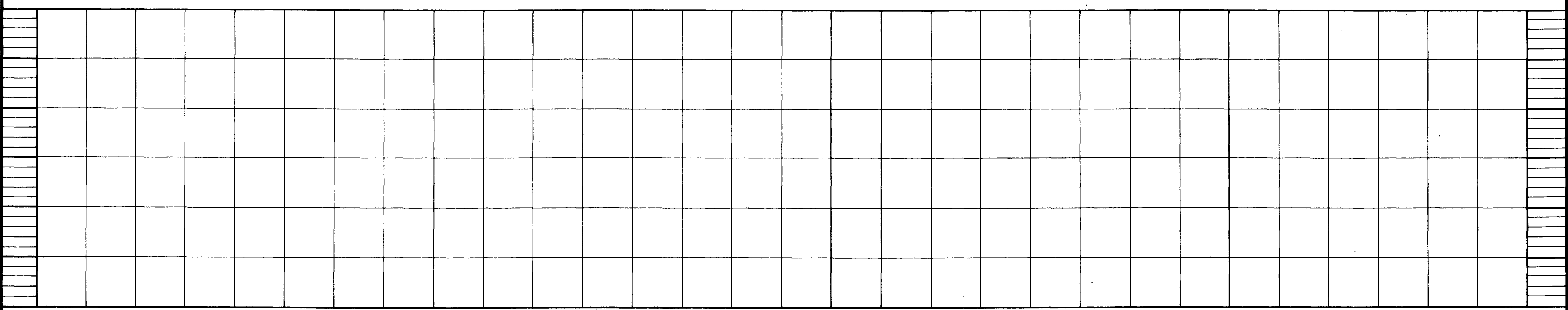



CREEKSIDE SUBDIVISION
FILING NO. TWO
SEWER OUTFALL LINE PROFILES

SHEET
2
OF 2 SHEETS




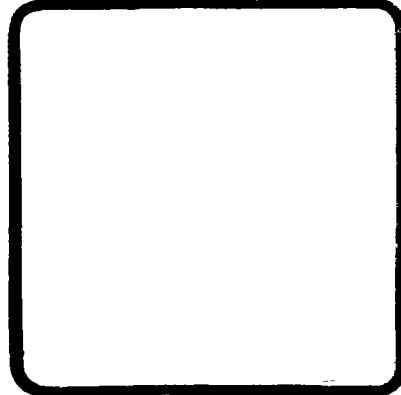
C-4 TO OF-6



CHECKED
DATE
OCTOBER 1978
SCALE
AS SHOWN

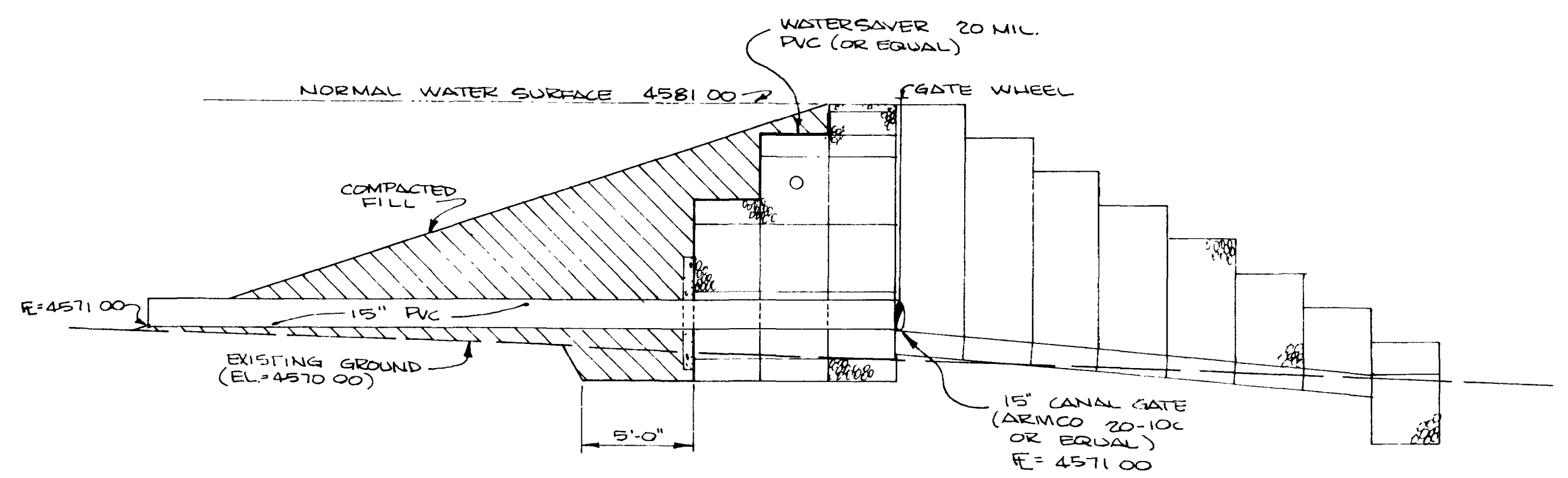
REVISIONS	BY

PARAGON ENGINEERING, INC.
P. O. Box 2872
Grand Junction, Colorado 81501 (303) 243-1806

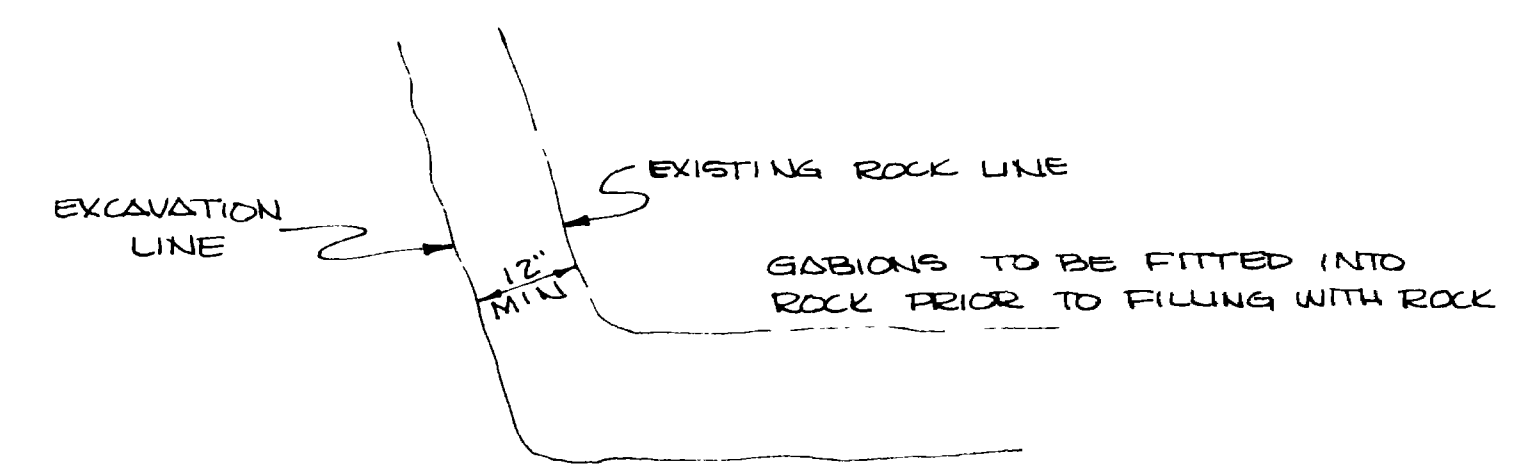



GABION DAM
CREEKSIDE SUBDIVISION

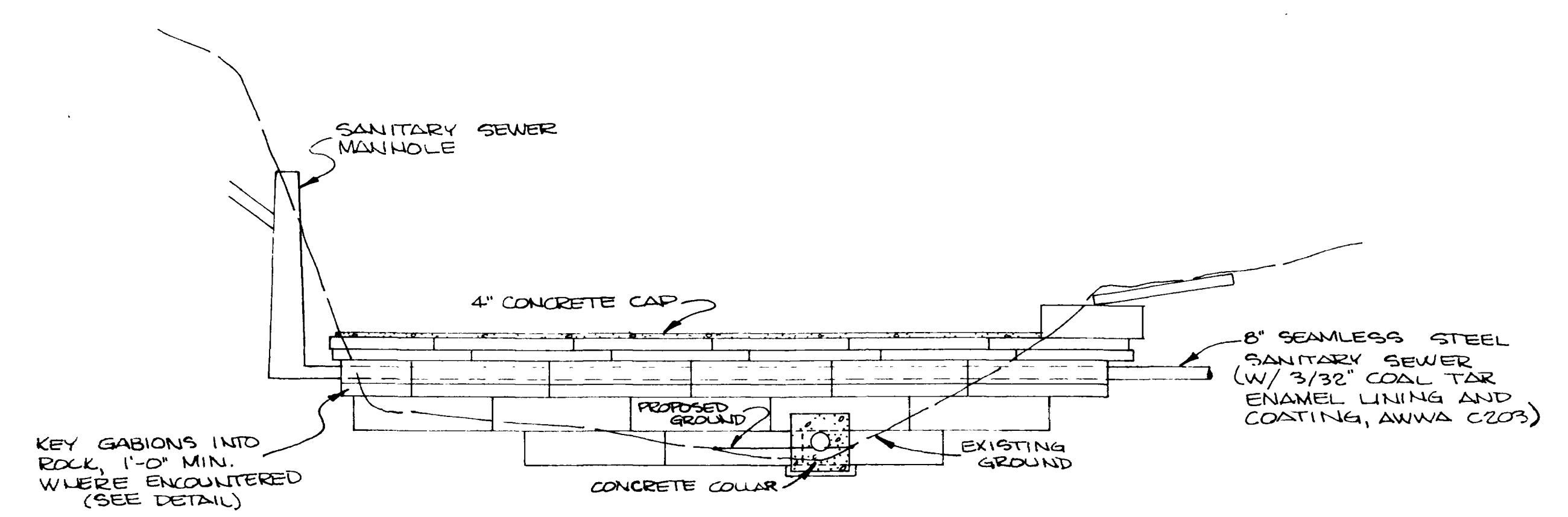
SHEET
1
OF 1 SHEETS



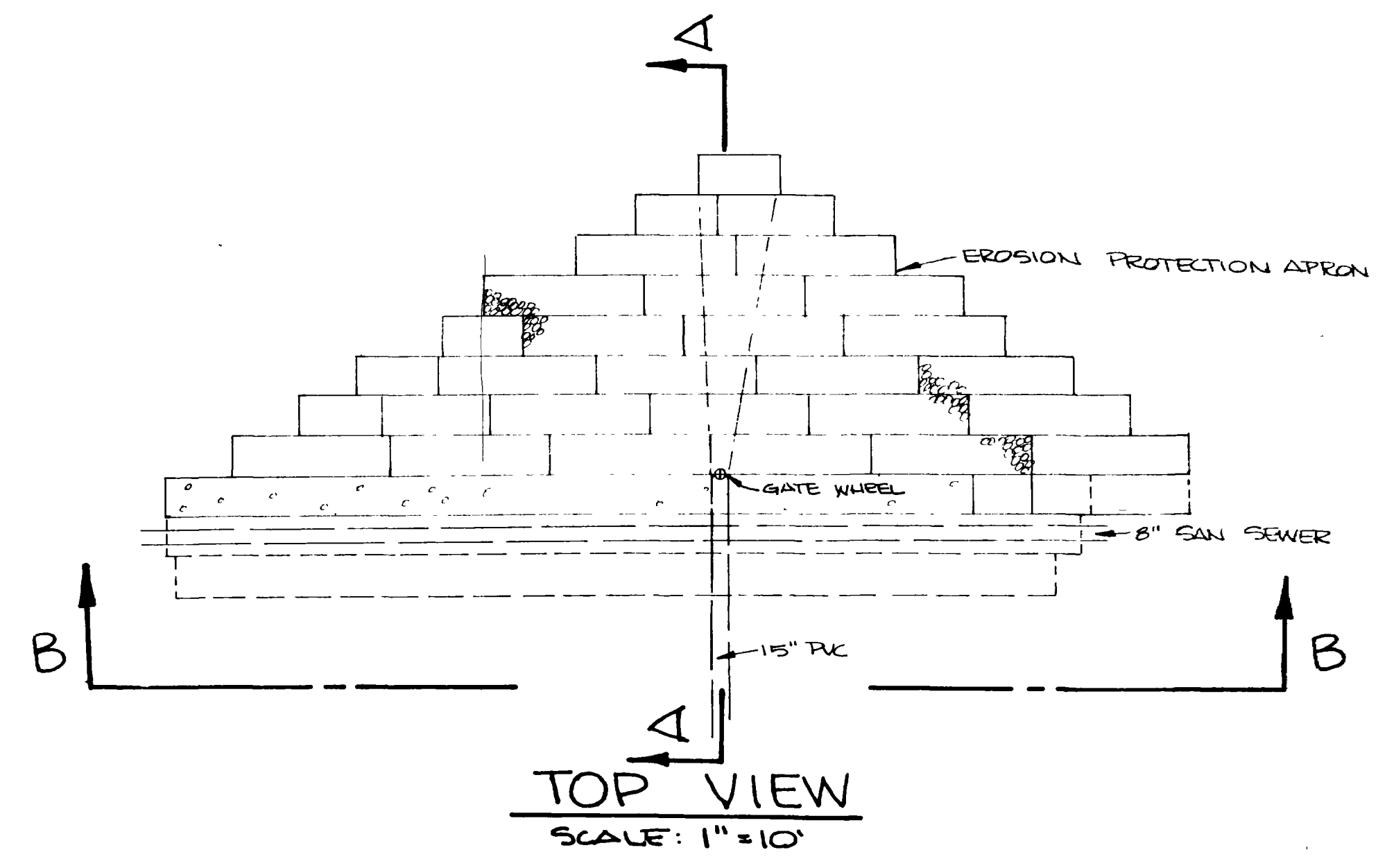
SECTION A-A
SCALE: 1"=5'



ROCK-KEYING DETAIL



SECTION B-B
SCALE: 1"=10'



TOP VIEW
SCALE: 1"=10'

- NOTES:**
1. HATCHED AREA TO BE FILLED IN LAYERS NOT TO EXCEED 6" IN THICKNESS AFTER COMPACTION.
 2. FILL SHOULD BE COMPACTED TO 95% OF MAXIMUM PROCTOR DENSITY.
 3. GABION TO BE INSTALLED AND FILLED IN ACCORDANCE WITH THE MANUFACTURERS INSTRUCTIONS.
 4. GABION FILL MATERIAL SHOULD RANGE IN SIZE FROM 4 TO 8 INCHES.
 5. TOP OF GABION DAM TO BE CAPPED WITH 4" CONCRETE CAP, AFTER STRUCTURE HAS SETTLED.
 6. GABION DAM TO BE LOCATED 60' UPSTREAM FROM EXISTING LIFT STATION.