

APPLETON SEWER TRUNKLINE EXTENSION PROJECT

City of Grand Junction, Colorado

NOT ASBUILT

SHEET #	SHEET DESCRIPTION
1	COVER SHEET
2	QUANTITIES SUMMARY
3	DRAFTING STANDARDS & ABBREVIATIONS
4	SEWER MAIN PLAN AND PROFILE: 0+00 TO 3+90.67
5	SEWER MAIN PLAN AND PROFILE: 3+90.67 TO 5+85.80
6	SEWER MAIN PLAN AND PROFILE: 5+85.80 TO 10+80
7	SEWER MAIN PLAN AND PROFILE: 10+00 TO 15+80
8	SEWER MAIN PLAN AND PROFILE: 15+80 TO 19+13
9	FRONTAGE ROAD PAVEMENT REPLACEMENT DETAILS
EXHIBIT "I"	STANDARD SANITARY SEWER DETAILS

WILLIAMS ENGINEERING
1231 19 Road
Fruita, CO 81521-9689
(970) 858-1014 Phone
(970) 858-1007 FAX



AGENCY	NAME	POSITION	MAILING ADDRESS	STREET ADDRESS	CITY, STATE	VOICE	FAX
CDOT	DENNIS KELLER	UTILITY PERMITS	606 S. 9TH STREET	606 S. 9TH STREET	GRAND JUNCTION, CO 81501	248-7372	248-7254
CDOT	TOM VAUGHN	HWY ENGINEER	222 S. 6TH STREET, #317	222 S. 6TH STREET, #317	GRAND JUNCTION, CO 81501	248-7217	248-7254
GRAND JUNCTION, CITY OF	TRENT PRALL	PROJECT ENGINEER	250 N. 5th STREET	250 N. 5th STREET	GRAND JUNCTION, CO 81501	244-1590	244-1599
PSCO	TOM BOUGHTON	AREA #2		2538 BLICKMAN ROAD	GRAND JUNCTION, CO 81501	244-2693	244-2675
TCI	GLENN VANCIL		2502 FORESIGHT CIRCLE	2502 FORESIGHT CIRCLE	GRAND JUNCTION, CO 81504	245-8750	245-6803
U.S. WEST	MAX WARD	ENGINEER			GRAND JUNCTION, CO 81504	244-4721	
UTE WATER	GARY MATTHEWS		PO BOX 460	560 25 ROAD	GRAND JUNCTION, CO 81502	242-7491	242-9189

(C01) Unless noted otherwise, Standard Details and Specifications and Special Provisions apply.

(C02) Notes numbered between 20 and 99 pertain to Work governed by the City of Grand Junction's standard specifications, as may be modified by Project Contract Documents.

(C03) Notes numbered between 200 and 699 pertain to Work governed by corresponding sections of the CDOT Standard Specifications for Road and Bridge Construction, as may be modified by Owner Standard Specifications and/or Project Contract Documents.

(C04) Notes numbered above 1000 pertain to miscellaneous Work not governed by standard specifications.

(C05) Note numbers preceded with a "C" are informational or general in nature and, as incidental to the Work, are no-pay items.

(C06) Property lines shown are approximate only.

ITEM NO.	REF. NO.	DESCRIPTION	UNIT	SHEET 4	SHEET 5	SHEET 6	SHEET 7	SHEET 8	MISC	TOTAL QTY	ACTUAL QTY	COMMENTS
1	20.1	CONSTRUCT 8" SDR 35 PVC SANITARY SEWER (INCLUDES CUT-OFF WALLS)	LF	391		495	500	340		1726.0		
2	20.3	CONSTRUCT SDR 35 PVC SANITARY SEWER STUB WITH PLUG, SLOPED AT 0.40% TOWARDS THE MH. THE LENGHT SHALL BE 3' - 5' UNLESS NOTED	LF			15				15.0		
3	20.6	CONSRUCT 8" C-900 DR 18 PVC SANITARY SEWER.	LF		195					195.0		
4	24.1	CONSTRUCT SANITARY SEWER TAP, SERVICE, AND PLUG, 4" UNLESS NOTED OTHERWISE. TAP LOCATION SHOWN IS APPROXIMATE ONLY - CONTRACTOR SHALL COORDINATE WITH HOMEOWNER TO DETERMINE DESIRED TAP LOCATION.										
4a		4" SERVICE TAP (INCLUDES WYE, RISER PIPE AND BEND)	EA		1	1	3			5.0		
4b		SERVICE TRENCH LENGTH WITH ONE 4" PIPE (INCLUDES CLEANOUTS, IF ANY)	LF		37	81	27			145.0		
5	57.1	BORE AND JACK PIPE AS SHOWN AND PER SPECIAL PROVISIONS.	LF		189					189.0		
6	59.1	AN 8" PVC PLUG SHALL BE SECURED WATER TIGHT BUT NOT GROUTED IN A KOR-N-SEAL GASKET IN THE MANHOLE WALL SO IT CAN BE REMOVED FOR FUTURE TIE-IN. GROUT THE MAN HOLE BASE FOR ALL INVERTS.	EA					2		2.0		
7	64.1	CONSTRUCT STANDARD 4' DIA. MH (8'-12')	EA	1	1	1		1		4.0		
8	64.4	CONSTRUCT 4' DIA. MH OVER EXISTING PIPELINE (<8' DEPTH).	EA	1						1.0		
9	81.1	OVEREXCAVATE TRENCH BELOW REQUIRED BEDDING AS DIRECTED BY ENGINEER, DISPOSE OF UNSUITABLE MATERIALS, AND REPLACE WITH GRANULAR STABILIZATION MATERIAL.	CY						200	200.0		
10	82.1	FURNISH AND INSTALL PIT RUN TRENCH BACKFILL MATERIAL AS DIRECTED BY ENGINEER.	TON						1850	1850.0		
11	202.31	REMOVE CONCRETE CURB TO JOINTS OR DIMENSIONS WHERE SHOWN; OTHERWISE, REMOVE AS REQUIRED FOR CONSTRUCTION. SAWCUT WHERE NECESSARY.	LF			20		17		37.0		
12	202.34	REMOVE CONCRETE VALLEY GUTTER TO JOINTS OR DIMENSIONS WHERE SHOWN; OTHERWISE, REMOVE AS REQUIRED FOR CONSTRUCTION. SAWCUT WHERE NECESSARY.	SY	5.6						5.6		
13	202.41	REMOVE ASPHALT PAVEMENT AS SHOWN.	SY	54.7		789.2	777.8	604.9		2226.6		
14	300/400.1	CONSTRUCT PAVEMENT STRUCTURE PER SPECIAL PROVISIONS.										
14a		INTERSTATE AVE. (3' HMA ON 4" CLASS 6 ON 12" OF 3" MINUS CLASS 3)	SY	54.7						54.7		
14b		FRONTAGE ROAD (INCLUDES PVMT AND TRENCH CAP TREATMENT, PER DETAIL SHEET 9)	LF			495	500	340		1335.0		
15	609.0	CONSTRUCT CONCRETE VALLEY PAN GUTTER.	SY	5.6						5.6		
16	609.2	CONSTRUCT CONCRETE CURB.	LF			20		17		37.0		
17	625.3	PROVIDE CONSTRUCTION SURVEYING AND RED-LINED PLANS PER AS-CONSTRUCTED CONDITIONS.	LS						1	1.0		
18	626.1	PROVIDE ALL MOBILIZATION, BONDS, INSURANCES, AND OTHER INCIDENTALS AND CLEANUP NECESSARY TO PERFORM THE WORK.	LS						1	1.0		
19	627.2 & 627.6	PROVIDE 4" WIDE WHITE LONGITUDINAL PAVEMENT MARKINGS AND PROVIDE DOUBLE 4" WIDE YELLOW LONGITUDINAL PAVEMENT MARKINGS.	LS						1	1.0		
20	630.2	PROVIDE TRAFFIC CONTROL IN ACCORDANCE WITH SPECIAL CONDITIONS.	LS						1	1.0		
21	1997.1	PROVIDE NEWSLETTERS PER SPECIAL CONDITIONS.	LS						1	1.0		

DRAFTING STANDARDS AND ABBREVIATIONS

LIST OF ABBREVIATIONS

ENTITY DESCRIPTION

ENTITY DESCRIPTION	LINE TYPE	BLOCK	SPACING
PROPERTY OR TRACT LINE	---	ROW	-
RAILROAD	+++++	CONTINUOUS	RAIL 4
EDGE OF PAVEMENT	- - - - -	DASHED	-
RIGHT OF WAY	-----	ROW	-
BARBED WIRE FENCE	---x---	CONTINUOUS	BARB 15
CHAIN LINK FENCE	---◇---	CONTINUOUS	CHAIN 15
BARRIER TYPE FENCE	---//---	CONTINUOUS	BARRIER 15
WOVEN WIRE FENCE	---//---	CONTINUOUS	WOVEN 15
WOOD FENCE	---•---	CONTINUOUS	WOOD 15
EXISTING GUARD RAIL	---□---	CONTINUOUS	GUARD 5
NEW GUARD RAIL	---■---	CONTINUOUS	NEWGUARD 5
RETAINING WALL	---▬---	CONTINUOUS	RETAIN 6
SIDEWALK	---4' S.W.---	CONTINUOUS	-
CURB & GUTTER	---2' CURB & GUTTER---	CONTINUOUS	-
CURB, GUTTER & SIDEWALK	---6' C.G. & SW.---	CONTINUOUS	-
BURIED TELEPHONE CABLE	---T---	CONTINUOUS	-
BURIED ELECTRIC CABLE	---E---	CONTINUOUS	-
GAS LINE	---G 2" MW---	CONTINUOUS	-
WATER LINE	---W 6" C.I.---	CONTINUOUS	-
SANITARY SEWERS	---8" SAN.---	CONTINUOUS	AROW
STORM SEWERS	---8" STORM---	CONTINUOUS	AROW
UNDERGROUND IRRIG. PIPE	---IRRIG.---	CONTINUOUS	AROW
SIPHON PIPE	---○---	CONTINUOUS	AROW
EARTH DITCH	--- ---	DIVIDE	-
CONCRETE DITCH	---▬---	CONTINUOUS	-
CULVERT	---6" R.C.P.---	DASHED	-
CULVERT WITH HEADWALL	---6" R.C.P.---	DASHED	-
CULVERT WITH END SECTION	---6" R.C.P.---	DASHED	-
MONUMENT LINE	---MONUMENT LINE---	CONTINUOUS	-
CONTROL LINE	---1+00 2+00---	CONTINUOUS	- 100
MATCH LINE	---MATCH LINE SHEET NO.---	CONTINUOUS	-

AASHTO	AMERICAN ASSOCIATION OF STATE HIGHWAY & TRANSPORTATION OFFICIALS
AC	ASBESTOS CEMENT
ASTM	AMERICAN SOCIETY FOR TESTING MATERIALS
AWWA	AMERICAN WATER WORKS ASSOCIATION
BC	BACK OF CURB
BCR	BEGIN CURB RETURN
BF	BUTTERFLY
BOP	BEGINNING OF PROJECT
BOT	BOTTOM
BW	BACK OF WALK
C	CHORD LENGTH
CAP	CORRUGATED ALUMINUM PIPE
CATV	CABLE TV
CDOT	COLORADO DEPARTMENT OF TRANSPORTATION
CG & SW	CURB, GUTTER & SIDEWALK
CH	CHORD
CI	CAST IRON
CL	LONG CHORD
CL or CI	CENTER LINE
CL or CI	CLEAR
CMP	CORRUGATED METAL PIPE
C.O.	CLEAN OUT (SEWER SERVICE)
CONC	CONCRETE
CP	CONTROL POINT
CS	SHORT CHORD
CSP	CORRUGATED STEEL PIPE
CU	COPPER
D _a	DEGREE OF CURVE ARC
D _c	DEGREE OF CURVE CHORD
D _i	DUCTILE IRON
DR or DWY	DRIVEWAY
E	EASTING
ECR	EXTERNAL ORDINATE
EL or ELEV	END CURB RETURN
ELEV	ELEVATION
ELEC	ELECTRIC
EOP	END OF PROJECT
EP	EDGE OF PAVEMENT
EX	EXISTING
FB	FULL BODY
FC	FACE OF CURB
FF	FINISH FLOOR
FG	FINISHED GRADE
FL	FLOW LINE
FL	FLANGE
FS	FAR SIDE
FTG	FOOTING
GV	GATE VALVE
I _c	DEFLECTION ANGLE
I _i	INTERIOR ANGLE
IRRIG	IRRIGATION
K	ABSCISSA OF THE SHIFTED PC
L	LENGTH OF ARC
LF	LINEAR FEET
LL	LONG ARC
LS	SHORT ARC
LT	LEFT
M	MIDDLE ORDINATE
MH	MANHOLE
MJ	MECHANICAL JOINT
MW	MILL WRAP
N	NORTHING
N/A	NOT APPLICABLE
NIC	NOT IN CONTRACT
NRCP	NON-REINFORCED CONCRETE PIPE
NS	NEAR SIDE
NTS	NOT TO SCALE
PC	POINT OF CURVATURE
PCC	PORTLAND CEMENT CONCRETE
PI	POINT OF INTERSECTION
PR	PROPOSED
PRC	POINT OF REVERSE CURVATURE
PT	POINT OF TANGENCY
PVC	POLYVINYL CHLORIDE
R	RADIUS
RCP	REINFORCED CONCRETE PIPE
REQ'D	REQUIRED
RG	RESTRAINED GLANDS
RL	LONG RADIUS
ROW, R/W, RW	RIGHT OF WAY
RP	RADIUS POINT
RR	RAIL ROAD
RS	SHORT RADIUS
RT	RIGHT
S	SLOPE
SCH	SCHEDULE
STA	STATION
STL	STEEL
(TYP)	TYPICAL
T	LENGTH OF TANGENT
TBM	TEMPORARY BENCH MARK
TC	TOP OF CURB OR CONCRETE
TH	TEST HOLE
VC	VERTICAL CURVE
VCP	VITRIFIED CLAY PIPE
VPC	VERTICAL POINT OF CURVATURE
VPI	VERTICAL POINT OF INTERSECTION
VPT	VERTICAL POINT OF TANGENCY
Δ	DELTA ANGLE

FACILITY OR SURFACE TREATMENT	EXISTING	PROPOSED	REMOVE & REPLACE
ASPHALT PAVEMENT	[Pattern]	[Pattern]	[Pattern]
CONCRETE (C, G, SW, SLABS)	[Pattern]	[Pattern]	[Pattern]
CONCRETE (DWYs, RAMPS)	[Pattern]	[Pattern]	[Pattern]
CONCRETE (DECORATIVE)	[Pattern]	[Pattern]	[Pattern]
AGGREGATE GRAVEL	[Pattern]	[Pattern]	[Pattern]
LANDSCAPE ROCK ON PLASTIC	[Pattern]	[Pattern]	[Pattern]
GRASS SOD	[Pattern]	[Pattern]	[Pattern]
BUILDING	[Pattern]	[Pattern]	[Pattern]

PLOTTING PARAMETERS

COLOR NAME	PEN SIZE	SHADING
RED	0.50	100%
YELLOW	0.35	100%
GREEN	0.70	100%
CYAN	0.50	100%
BLUE	0.18	100%
MAGENTA	0.50	100%
WHITE	0.18	100%
8	0.18	100%
9	0.35	100%
16	0.25	100%
30	0.13	100%
31	0.07	100%
32	0.10	100%
250	0.25	80%
251	0.18	55%
252	0.18	40%
253	0.25	25%

BLOCKS

BLOCK NAME	SYMBOL	BLOCK NAME
REDUCER FITTING	◄	REDUCER
CURB STOP	◄	CURBSTOP
PULL BOX	◻	PULL
TRAFFIC SIGNAL POLE	◻	SIGNAL
SIGN OR POST	+	SIGN
TELEPHONE MANHOLE	⊗	TELEMAN
MANHOLE	○	MANHOLE
BENCH MARK	⊕	BENCH
SPRINKLER HEAD	●	HEAD
MAILBOX	□	MAILBOX
IRRIGATION PUMP	⊞	IRRIPUMP
TREE STUMP	●	STUMP
LIGHT STANDARD	⊙	LITE
FIRE HYDRANT	⊕	HYDRANT
EXISTING WATER VALVE	⊞	OVALVE
NEW WATER VALVE	⊞	VALVE
TELEPHONE CONTROL BOX	△	TELEBOX
POWER POLE	⊖	POWER
GUY WIRE ANCHOR	⊞	GUY
TREE	⊕	TREE
HEDGE OR BUSH	⊕	BUSH
SURVEY MARKER	⊕	MCSM
WATER METER	○	WATERMETER
WATER HYDRANT	⊕	WATERHYDRANT
PROPERTY PIN	⊞	PIN
YARD LIGHT	⊞	YLITE
CATCH BASIN	■	GRATE
ARROW HEAD	◄	AROW
BARB WIRE FENCE SYMBOL	×	BARB
CHAIN LINK FENCE SYMBOL	◇	CHAIN
BARRIER FENCE SYMBOL	///	BARRIER
WOVEN FENCE SYMBOL	//	WOVEN
WOOD FENCE SYMBOL	•	WOOD
EXISTING GUARD RAIL POST	□	GUARD
NEW GUARD RAIL POST	■	NEWGUARD
RAILROAD TIE SYMBOL		RAIL

DESCRIPTION	DATE
REVISION Δ	---
REVISION Δ	---
REVISION Δ	---

HORIZONTAL	VERTICAL

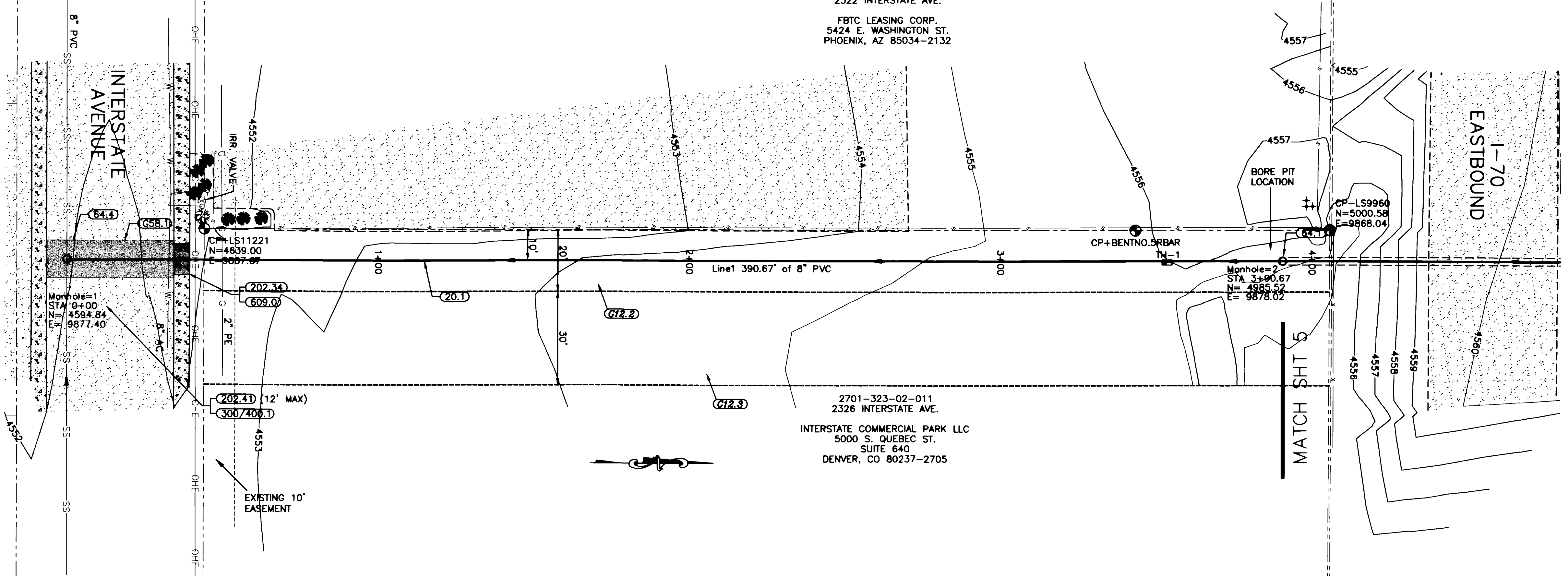
WILLIAMS ENGINEERING
 1231 19 ROAD, FRUITA, COLORADO 81521-9689
 (970) 858-1014 PHONE (970) 858-1007 FAX

DRAFTING STANDARDS & ABBREVIATIONS

SHEET 3
 FILENAME
 DSA.DWG

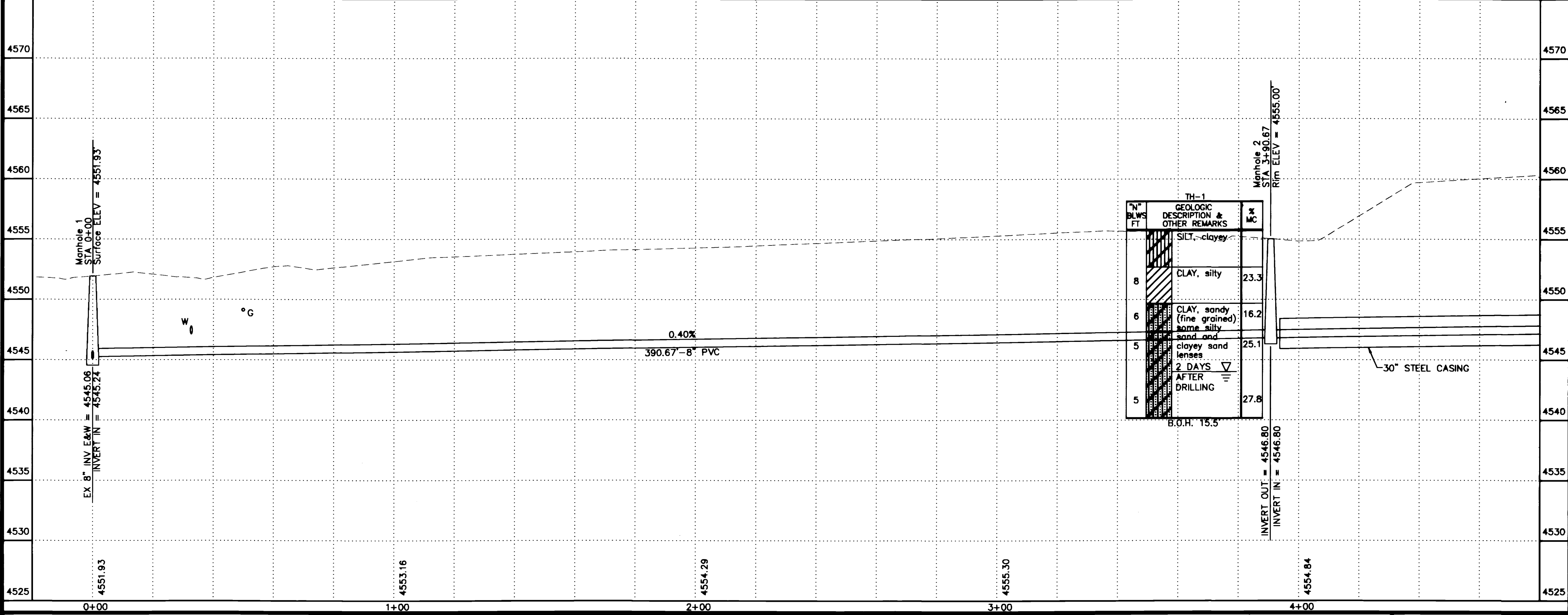
2701-323-02-010
2322 INTERSTATE AVE.
FBTC LEASING CORP.
5424 E. WASHINGTON ST.
PHOENIX, AZ 85034-2132

2701-323-02-011
2326 INTERSTATE AVE.
INTERSTATE COMMERCIAL PARK LLC
5000 S. QUEBEC ST.
SUITE 640
DENVER, CO 80237-2705

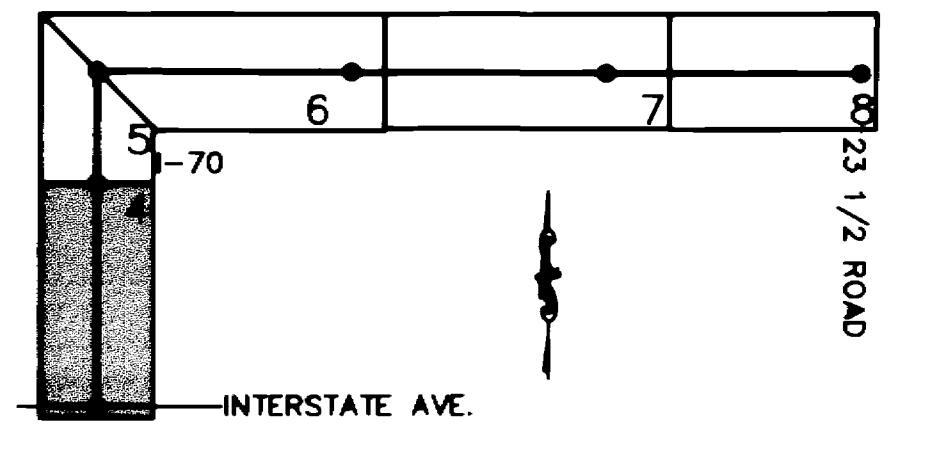


FACILITY OR SURFACE TREATMENT	EXISTING	PROPOSED	REMOVE & REPLACE
ASPHALT PAVEMENT			
CONCRETE (C, G, SW, SLABS)			

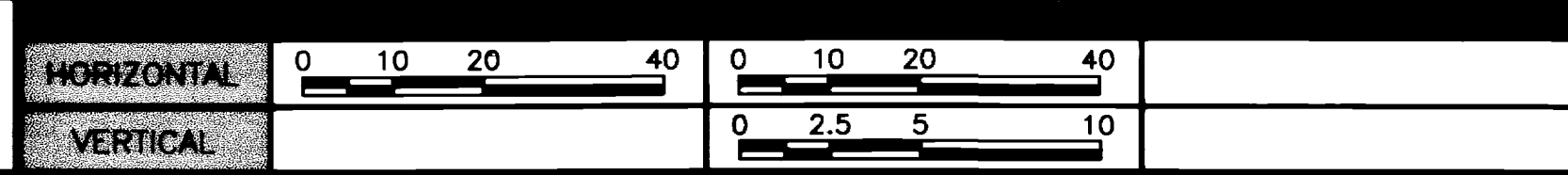
- G12.2 THE PROPOSED PERMANENT EASEMENT WILL BE OBTAINED BY THE OWNER PRIOR TO CONSTRUCTION.
- G12.3 THE PROPOSED TEMPORARY EASEMENT WILL BE OBTAINED BY THE OWNER PRIOR TO CONSTRUCTION.
- 20.1 CONSTRUCT 8" SDR 35 PVC SANITARY SEWER.
- G58.1 CONSTRUCT CUT-OFF WALL PER STANDARD SPECIFICATIONS.
- 64.1 CONSTRUCT STANDARD 4' DIA. MH.
- 64.4 CONSTRUCT 4' DIA. MH OVER EXISTING PIPELINE.
- 202.34 REMOVE CONCRETE VALLEY GUTTER TO JOINTS OR DIMENSIONS WHERE SHOWN; OTHERWISE, REMOVE AS REQUIRED FOR CONSTRUCTION. SAWCUT WHERE NECESSARY.
- 202.41 REMOVE ASPHALT PAVEMENT AS SHOWN.
- 300/400.1 CONSTRUCT PAVEMENT STRUCTURE PER SPECIAL PROVISIONS.
- 609.0 CONSTRUCT CONCRETE VALLEY PAN GUTTER.



N° BLWS FT	GEOLOGIC DESCRIPTION & OTHER REMARKS	DEPTH FT
8	SILT, clayey	23.3
6	CLAY, silty	16.2
5	CLAY, sandy (fine grained) some silty sand and clayey sand lenses	25.1
5	2 DAYS AFTER DRILLING	27.8



REVISION	DESCRIPTION	DATE



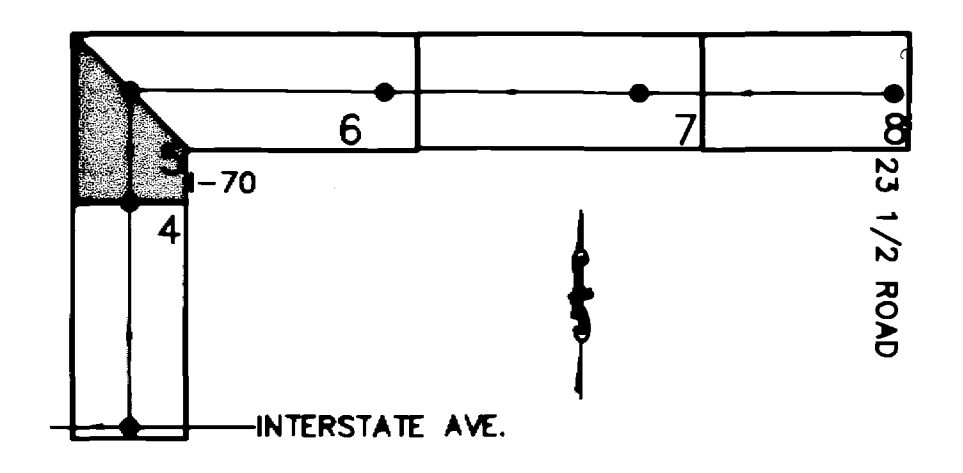
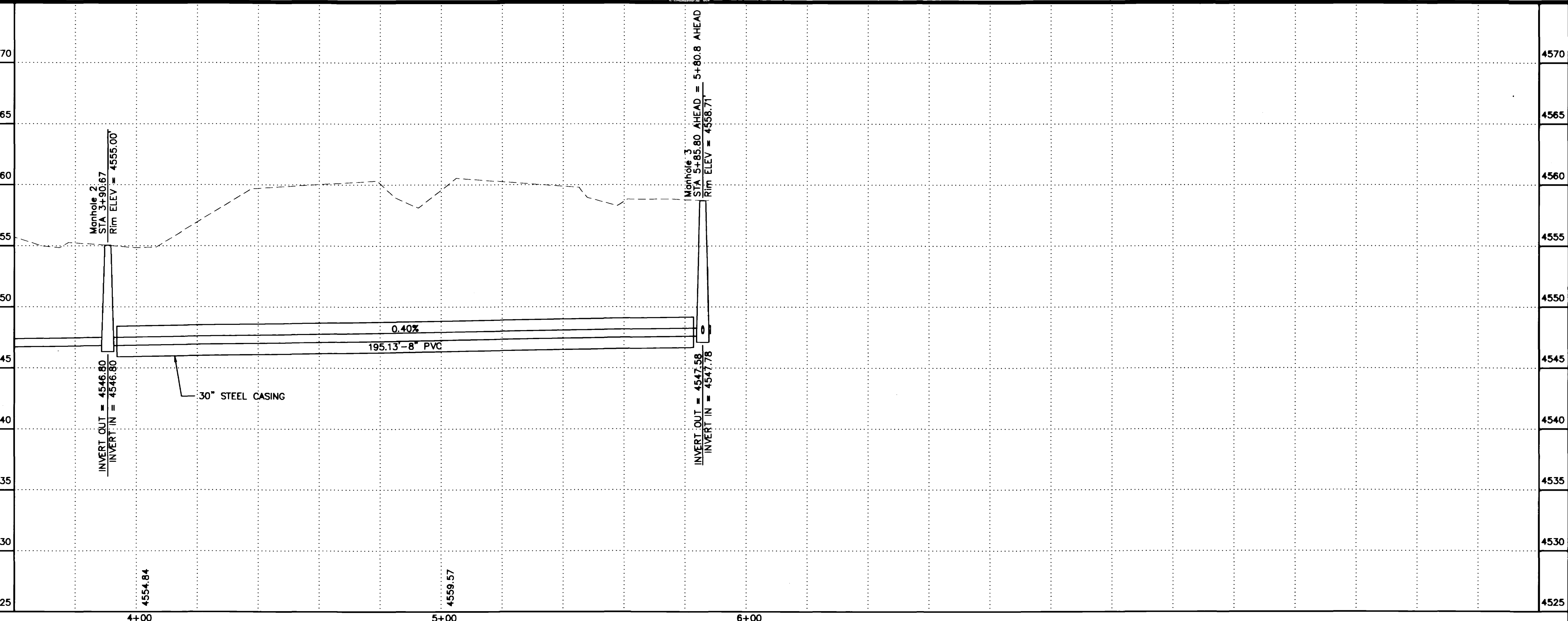
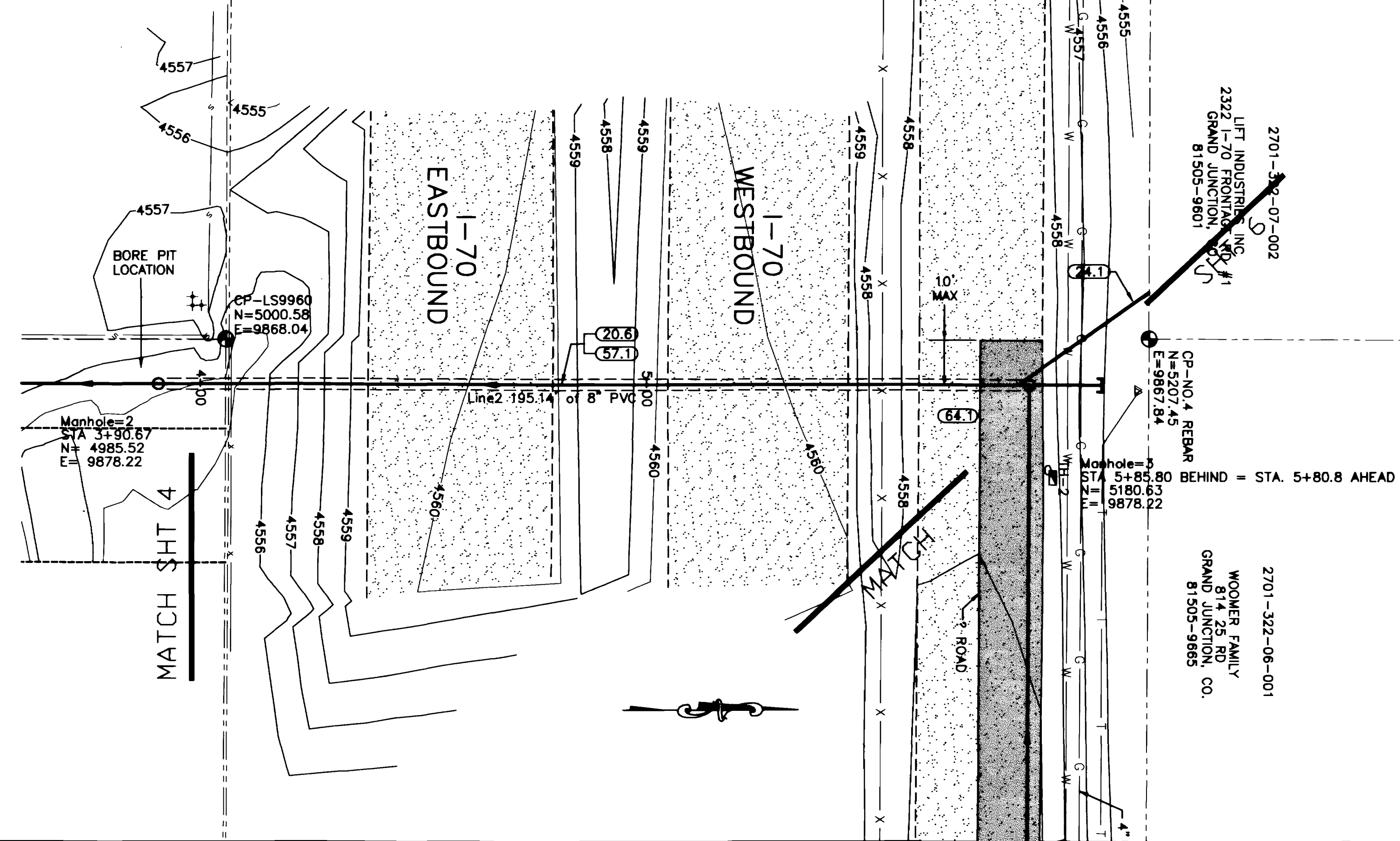
WILLIAMS ENGINEERING
1231 19 ROAD, FRUITA, COLORADO 81521-9689
(970) 858-1014 PHONE (970) 858-1007 FAX

**APPLETON SEWER
EXTENSION & SEWERLINE IMPROVEMENTS**
Sta. 0+00 to 3+90.67

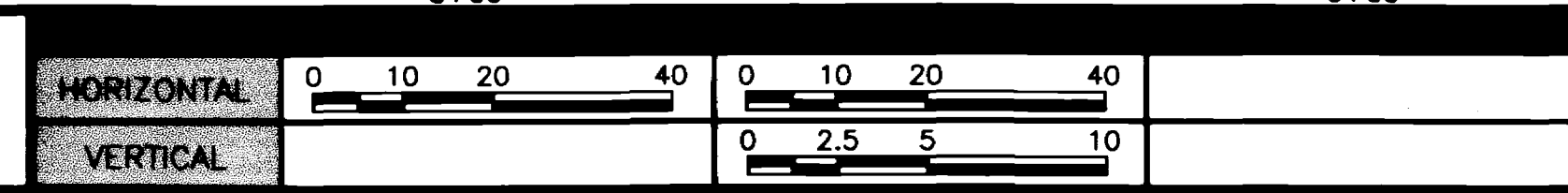
SHEET 4
FILENAME
SS020101.DWG

PROPERTY OR SURFACE TREATMENT	EXISTING	PROPOSED	REMOVE & REPLACE
ASPHALT PAVEMENT			
CONCRETE (C. G. SW. SLABS)			

- 20.6 CONSTRUCT C-900 DR 18 PVC SANITARY SEWER.
- 24.1 CONSTRUCT SANITARY SEWER TAP, SERVICE, AND PLUG, 4" UNLESS NOTED OTHERWISE. TAP LOCATION SHOWN IS APPROXIMATE ONLY - CONTRACTOR SHALL COORDINATE WITH PROPERTY OWNER TO DETERMINE DESIRED TAP LOCATION.
- 57.1 BORE AND JACK PIPE AS SHOWN AND PER SPECIAL PROVISIONS.
- 64.1 CONSTRUCT STANDARD 4' DIA. MH.



REVISION	DESCRIPTION	DATE
REVISION Δ	_____	_____
REVISION Δ	_____	_____
REVISION Δ	_____	_____

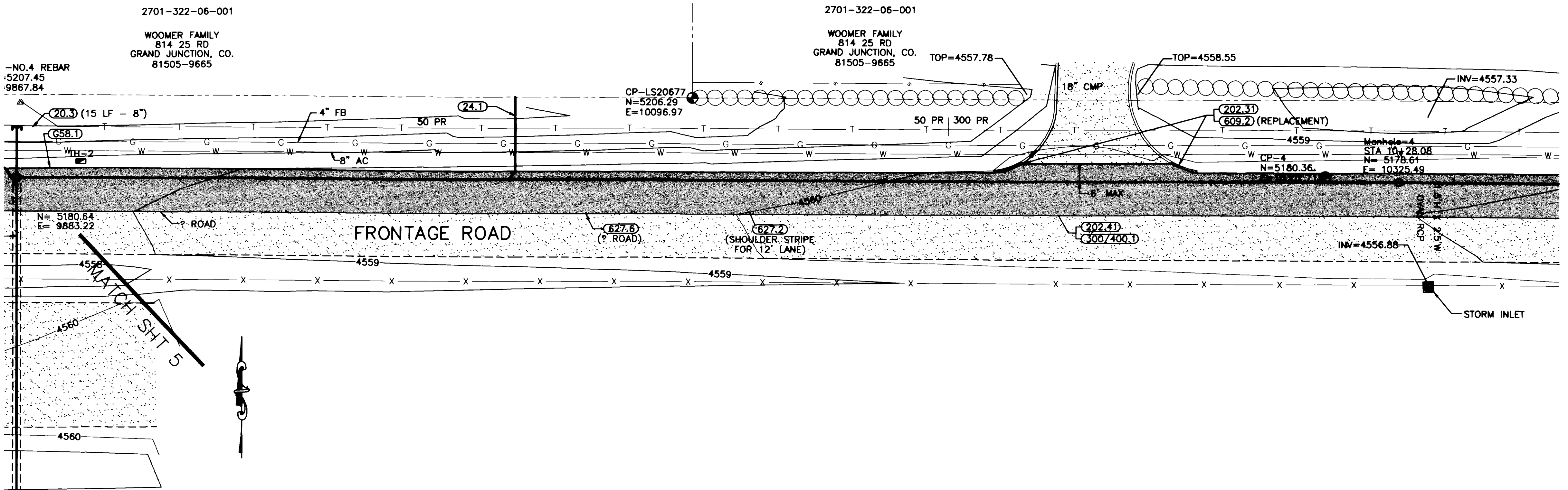


WILLIAMS ENGINEERING
 1231 19 ROAD, FRUITA, COLORADO 81521-9689
 (970) 858-1014 PHONE (970) 858-1007 FAX

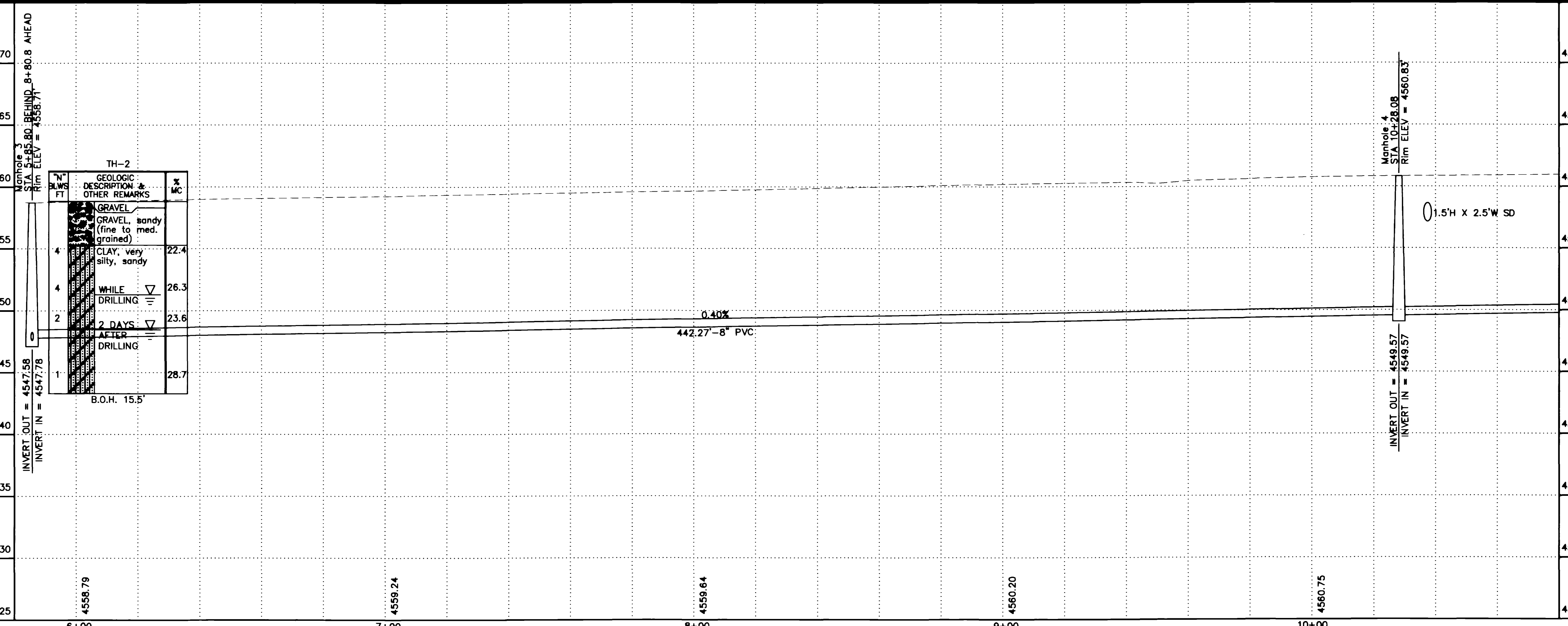
APPLETON SEWER
 EXTENSION & SEWERLINE IMPROVEMENTS
 Sta. 3+90.67 to 5+85.80

SHEET 5
 FILENAME
 SS020201.DWG

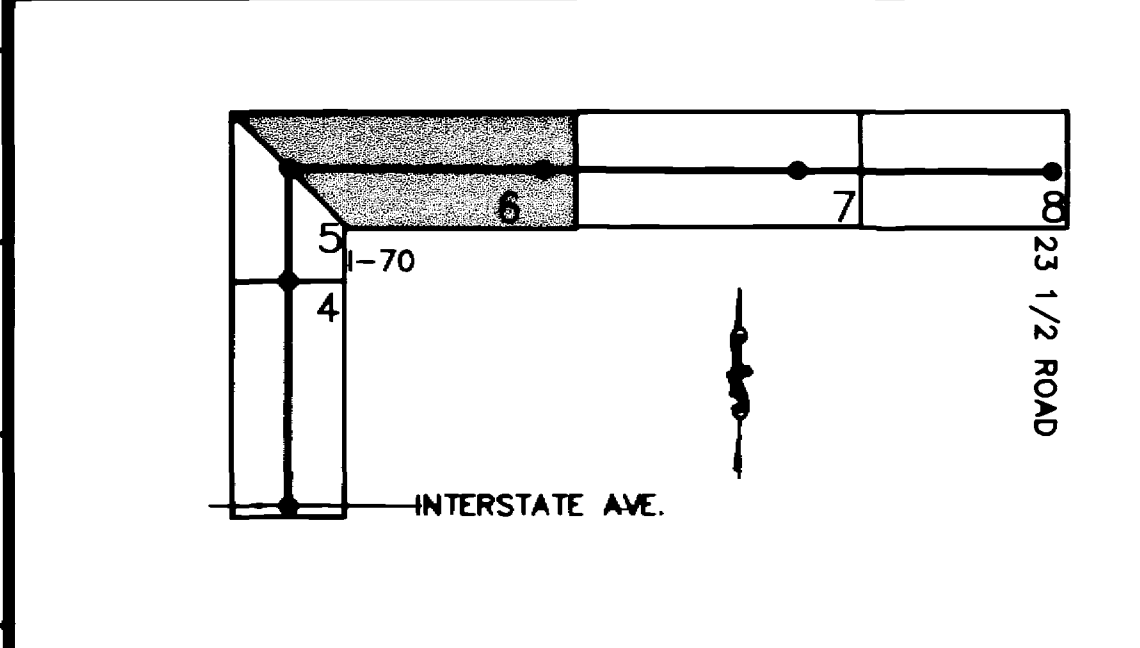
FACILITY OR SURFACE TREATMENT	EXISTING	PROPOSED	REMOVE & REPLACE
ASPHALT PAVEMENT			
CONCRETE (C, G, SW, SLABS)			



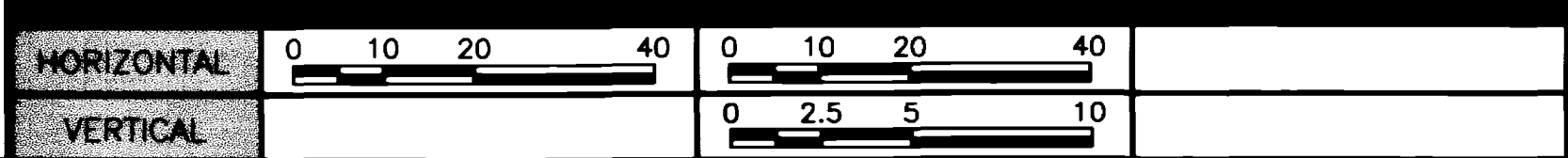
- 20.1 CONSTRUCT 8" SDR 35 PVC SANITARY SEWER.
- 20.3 CONSTRUCT SDR 35 PVC SANITARY SEWER STUB WITH PLUG, SLOPED AT .40% TOWARDS THE MH. THE LENGTH SHALL BE 3' - 5' UNLESS NOTED OTHERWISE
- 24.1 CONSTRUCT SANITARY SEWER TAP, SERVICE, AND PLUG, 4" UNLESS NOTED OTHERWISE. TAP LOCATION SHOWN IS APPROXIMATE ONLY - CONTRACTOR SHALL COORDINATE WITH PROPERTY OWNER TO DETERMINE DESIRED TAP LOCATION.
- 658.1 CONSTRUCT CUT-OFF WALL PER STANDARD SPECIFICATIONS.
- 64.1 CONSTRUCT STANDARD 4' DIA. MH.
- 202.31 REMOVE CONCRETE CURB TO JOINTS OR DIMENSIONS WHERE SHOWN; OTHERWISE, REMOVE AS REQUIRED FOR CONSTRUCTION. SAWCUT WHERE NECESSARY.
- 202.41 REMOVE ASPHALT PAVEMENT AS SHOWN.
- 300/400.1 CONSTRUCT PAVEMENT STRUCTURE PER SPECIAL PROVISIONS.
- 609.2 CONSTRUCT CONCRETE CURB.
- 627.2 PROVIDE 4" WIDE WHITE LONGITUDINAL PAVEMENT MARKINGS.
- 627.6 PROVIDE DOUBLE 4" WIDE YELLOW LONGITUDINAL PAVEMENT MARKINGS.



BLWS	DEPTH	DESCRIPTION	% MC
4	4	GRAVEL	
4	4	GRAVEL, sandy (fine to med. grained)	
4	4	CLAY, very silty, sandy	22.4
4	4	WHITE DRILLING	26.3
2	2	2 DAYS AFTER DRILLING	23.6
1	1	DRILLING	28.7



REVISION	DESCRIPTION	DATE
REVISION		
REVISION		
REVISION		

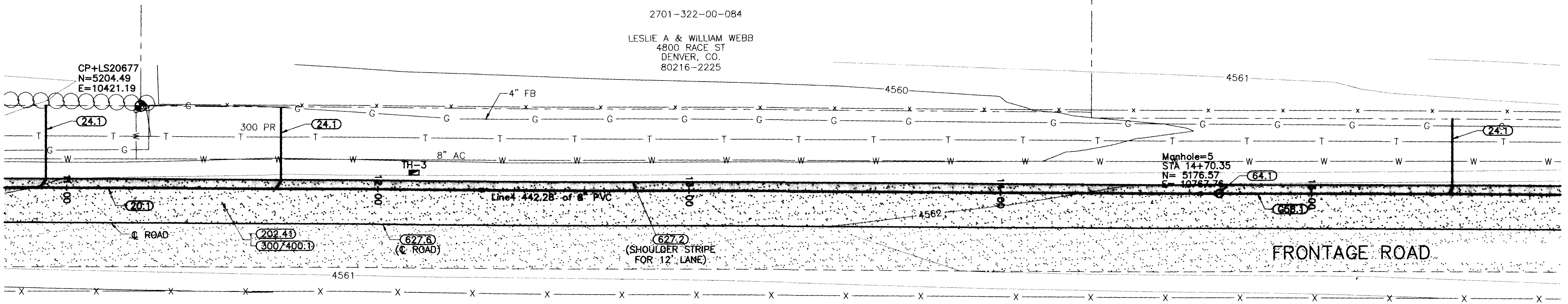


WILLIAMS ENGINEERING
 1231 19 ROAD, FRUITA, COLORADO 81521-9689
 (970) 858-1014 PHONE (970) 858-1007 FAX

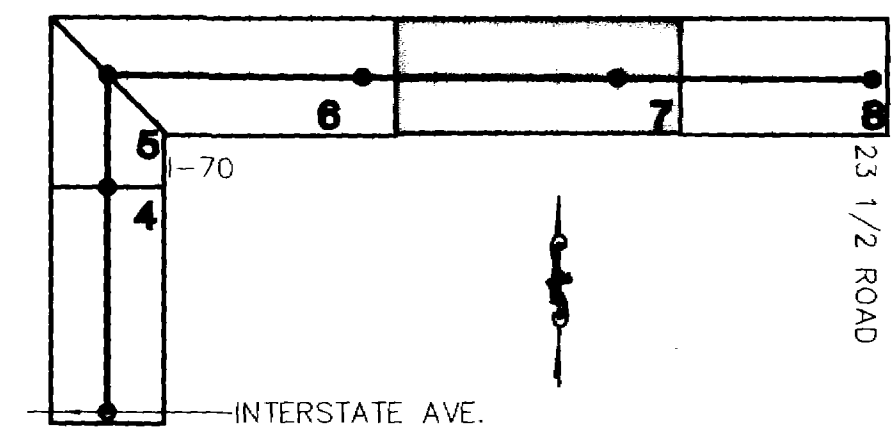
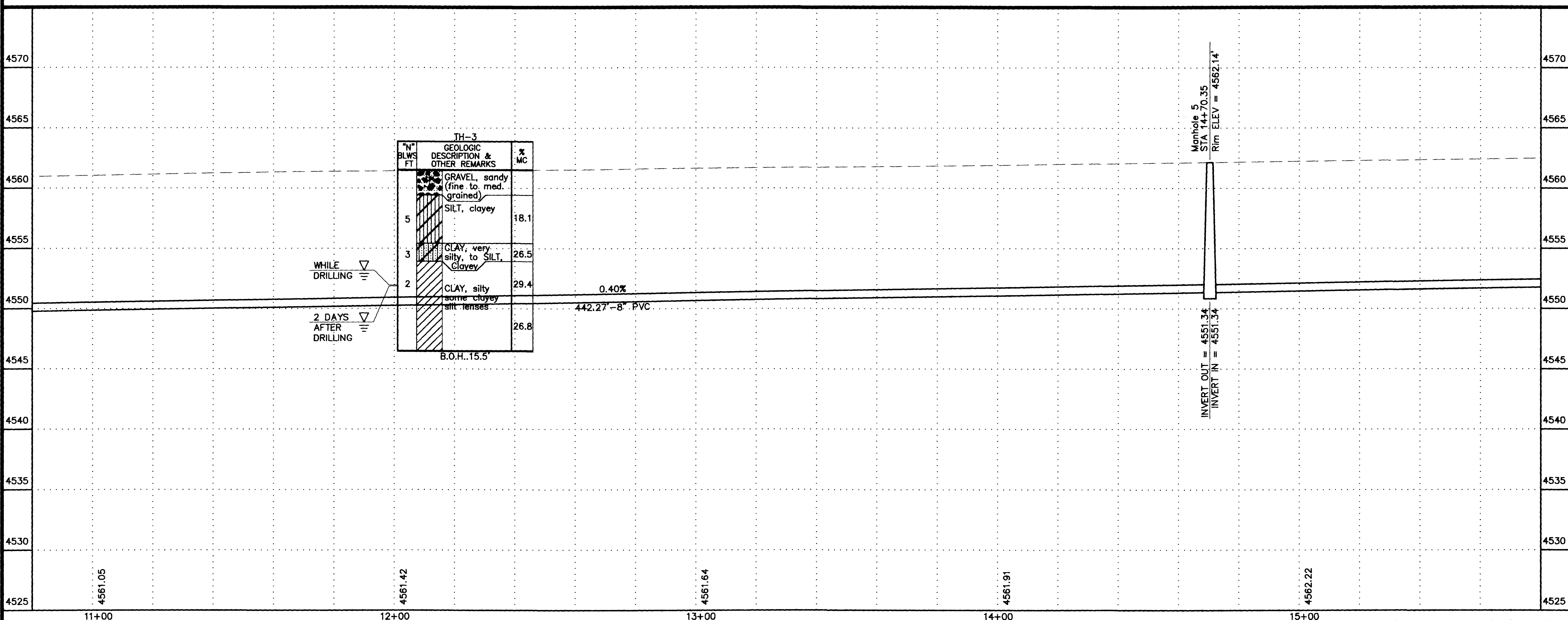
APPLETON SEWER
 EXTENSION & SEWERLINE IMPROVEMENTS
 Sta. 5+85.80 to 10+80

SHEET 6
 FILENAME
 SS020301.DWG

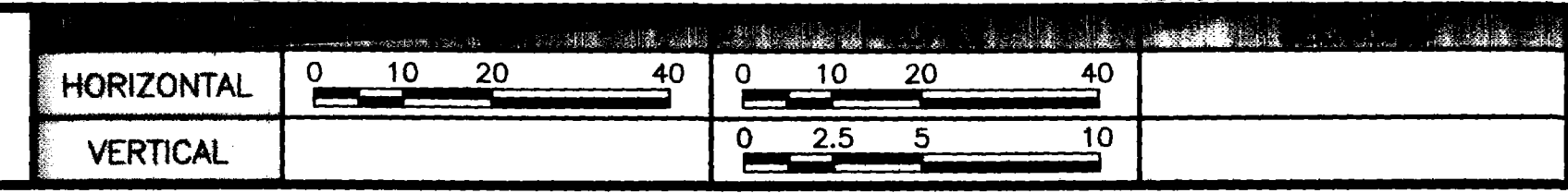
FACILITY OR SURFACE TREATMENT	EXISTING	PROPOSED	REMOVE & REPLACE
ASPHALT PAVEMENT			
CONCRETE (C, G, SW, SLABS)			



- 20.1 CONSTRUCT 8" SDR 35 PVC SANITARY SEWER.
- 24.1 CONSTRUCT SANITARY SEWER TAP, SERVICE, AND PLUG, 4" UNLESS NOTED OTHERWISE. TAP LOCATION SHOWN IS APPROXIMATE ONLY - CONTRACTOR SHALL COORDINATE WITH PROPERTY OWNER TO DETERMINE DESIRED TAP LOCATION.
- G58.1 CONSTRUCT CUT-OFF WALL PER STANDARD SPECIFICATIONS.
- 64.1 CONSTRUCT STANDARD 4' DIA. MH.
- 202.41 REMOVE ASPHALT PAVEMENT AS SHOWN.
- 300/400.1 CONSTRUCT PAVEMENT STRUCTURE PER SPECIAL PROVISIONS.
- 627.2 PROVIDE 4" WIDE WHITE LONGITUDINAL PAVEMENT MARKINGS.
- 627.6 PROVIDE DOUBLE 4" WIDE YELLOW LONGITUDINAL PAVEMENT MARKINGS.



REVISION	DESCRIPTION	DATE



WILLIAMS ENGINEERING
 1231 19 ROAD, FRUITA, COLORADO 81521-9689
 (970) 858-1014 PHONE (970) 858-1007 FAX

APPLETON SEWER
EXTENSION & SEWERLINE IMPROVEMENTS
 Sta. 10+80 to 15+80

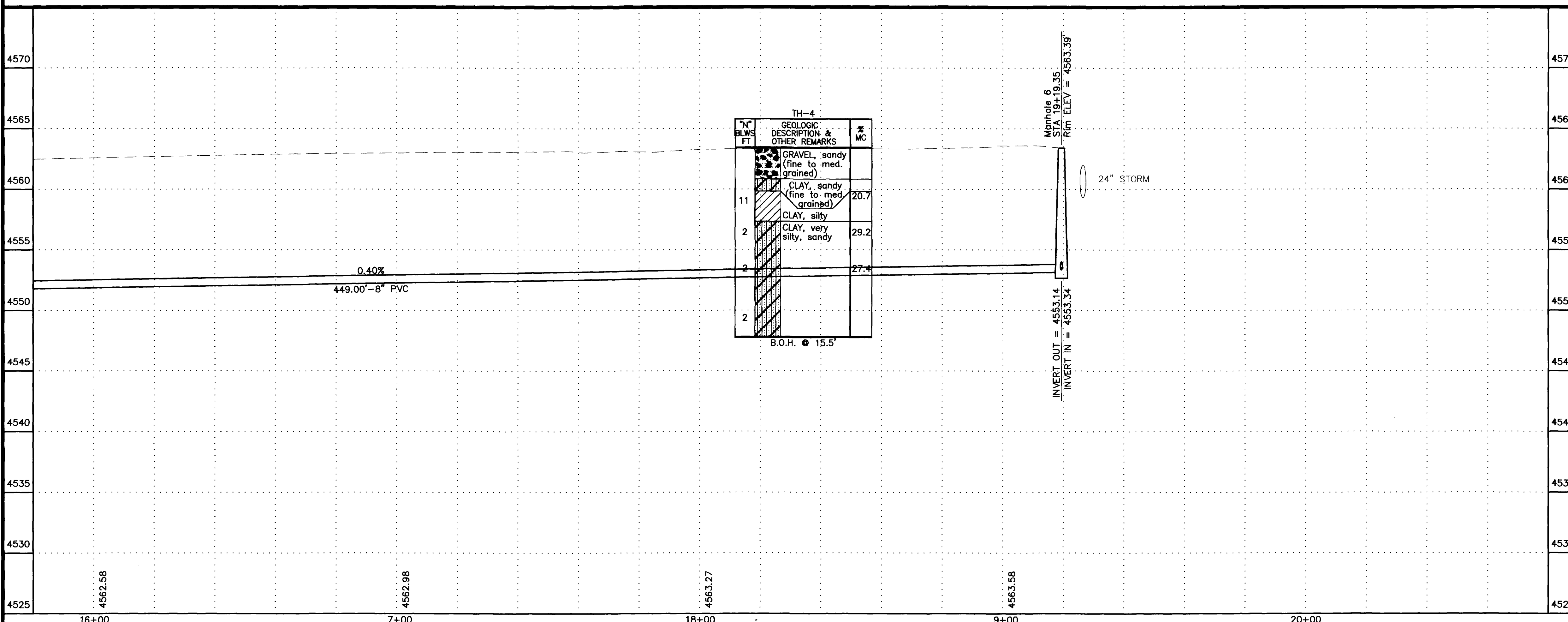
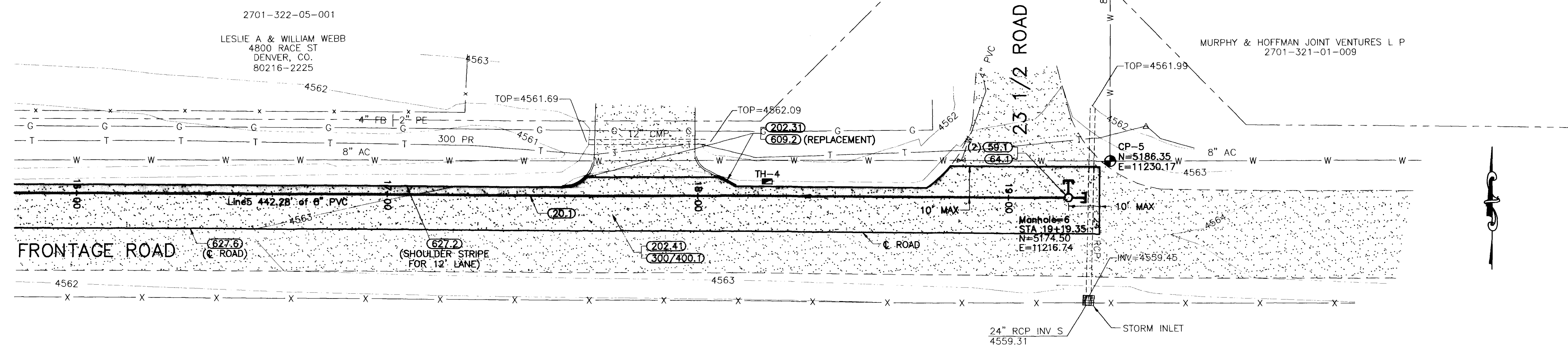
SHEET 7
 FILENAME
 SS020401.DWG

SHADING AND TEXTURE LEGEND

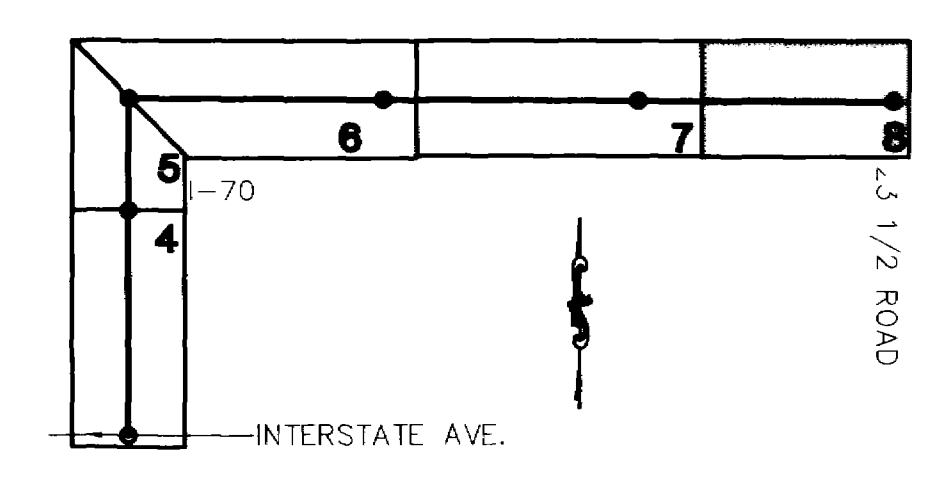
FACILITY OR SURFACE TREATMENT	EXISTING	PROPOSED	REMOVE & REPLACE
ASPHALT PAVEMENT			
CONCRETE (C, G, SW, SLABS)			

CONSTRUCTION NOTES

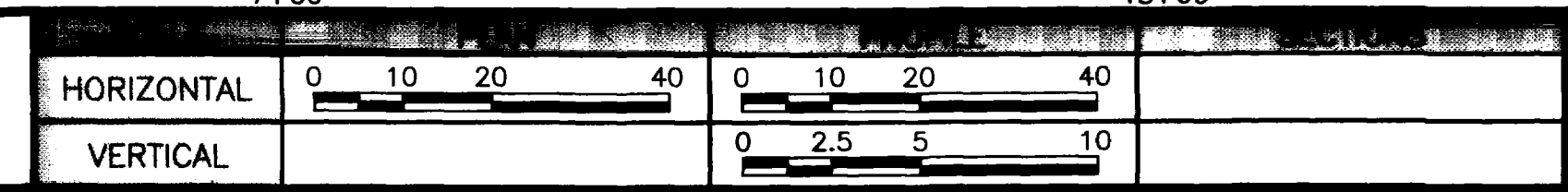
- 20.1 CONSTRUCT 8" SDR 35 PVC SANITARY SEWER.
- 59.1 A PVC PLUG SHALL BE SECURED WATER TIGHT BUT NOT GROUTED IN A KOR-N-SEAL GASKET IN THE MANHOLE WALL SO IT CAN BE REMOVED FOR FUTURE TIE-IN. GROUT THE MAN HOLE BASE FOR ALL INVERTS.
- 64.1 CONSTRUCT STANDARD 4' DIA. MH.
- 202.31 REMOVE CONCRETE CURB TO JOINTS OR DIMENSIONS WHERE SHOWN; OTHERWISE, REMOVE AS REQUIRED FOR CONSTRUCTION. SAWCUT WHERE NECESSARY.
- 202.41 REMOVE ASPHALT PAVEMENT AS SHOWN.
- 300/400.1 CONSTRUCT PAVEMENT STRUCTURE PER SPECIAL PROVISIONS.
- 609.2 CONSTRUCT CONCRETE CURB.
- 627.2 PROVIDE 4" WIDE WHITE LONGITUDINAL PAVEMENT MARKINGS.
- 627.6 PROVIDE DOUBLE 4" WIDE YELLOW LONGITUDINAL PAVEMENT MARKINGS.



KEY MAP



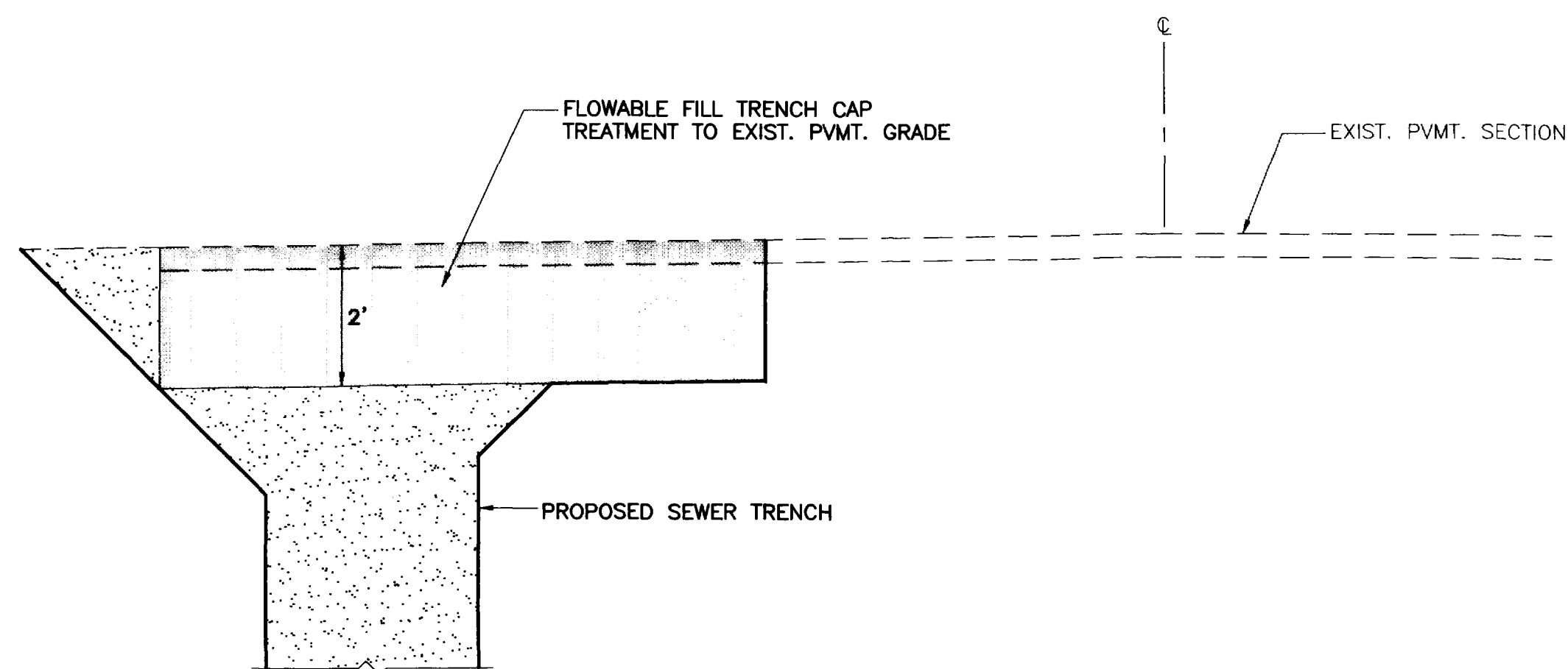
REVISION	DESCRIPTION	DATE



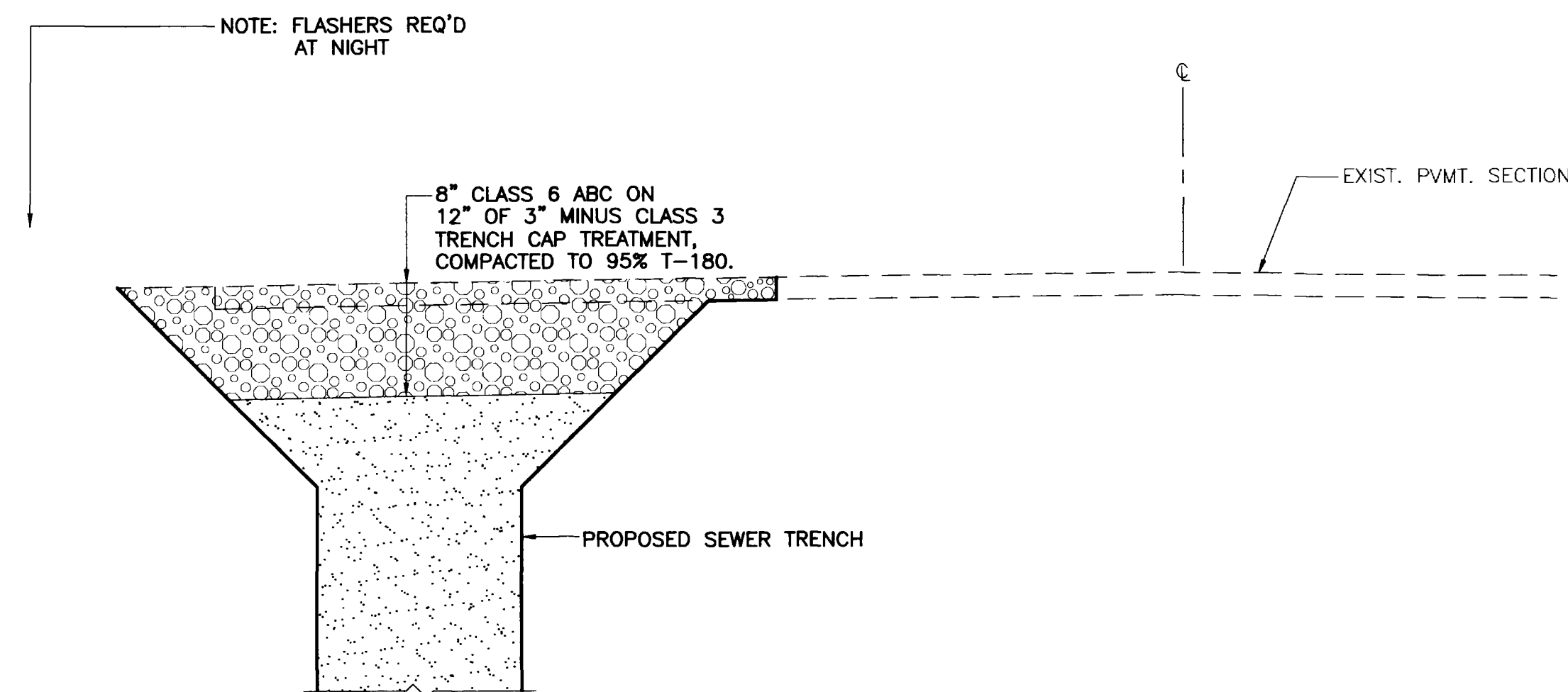
WILLIAMS ENGINEERING
1231 19 ROAD, FRUITA, COLORADO 81521-9689
(970) 858-1014 PHONE (970) 858-1007 FAX

APPLETON SEWER
EXTENSION & SEWERLINE IMPROVEMENTS
Sta. 15+80 to 19+12.63

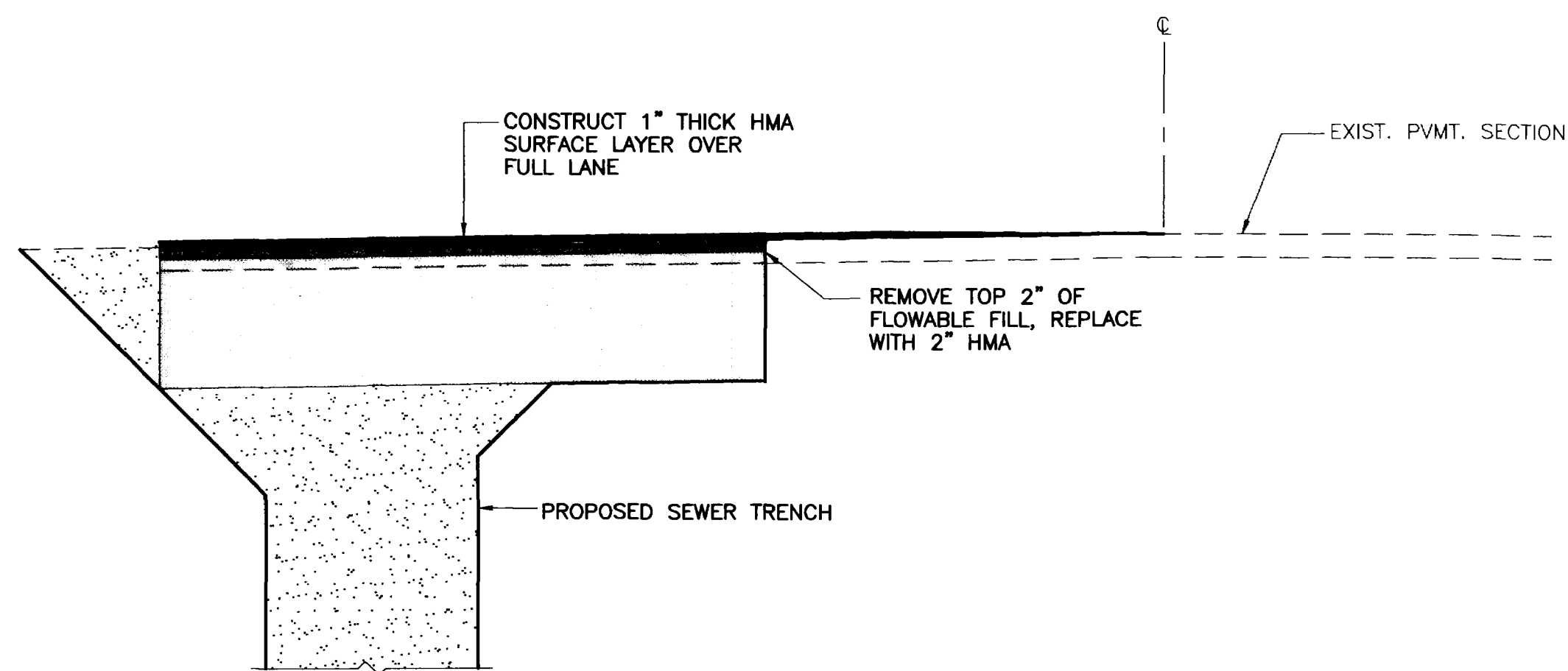
SHEET 8
FILENAME
SS020501.DWG



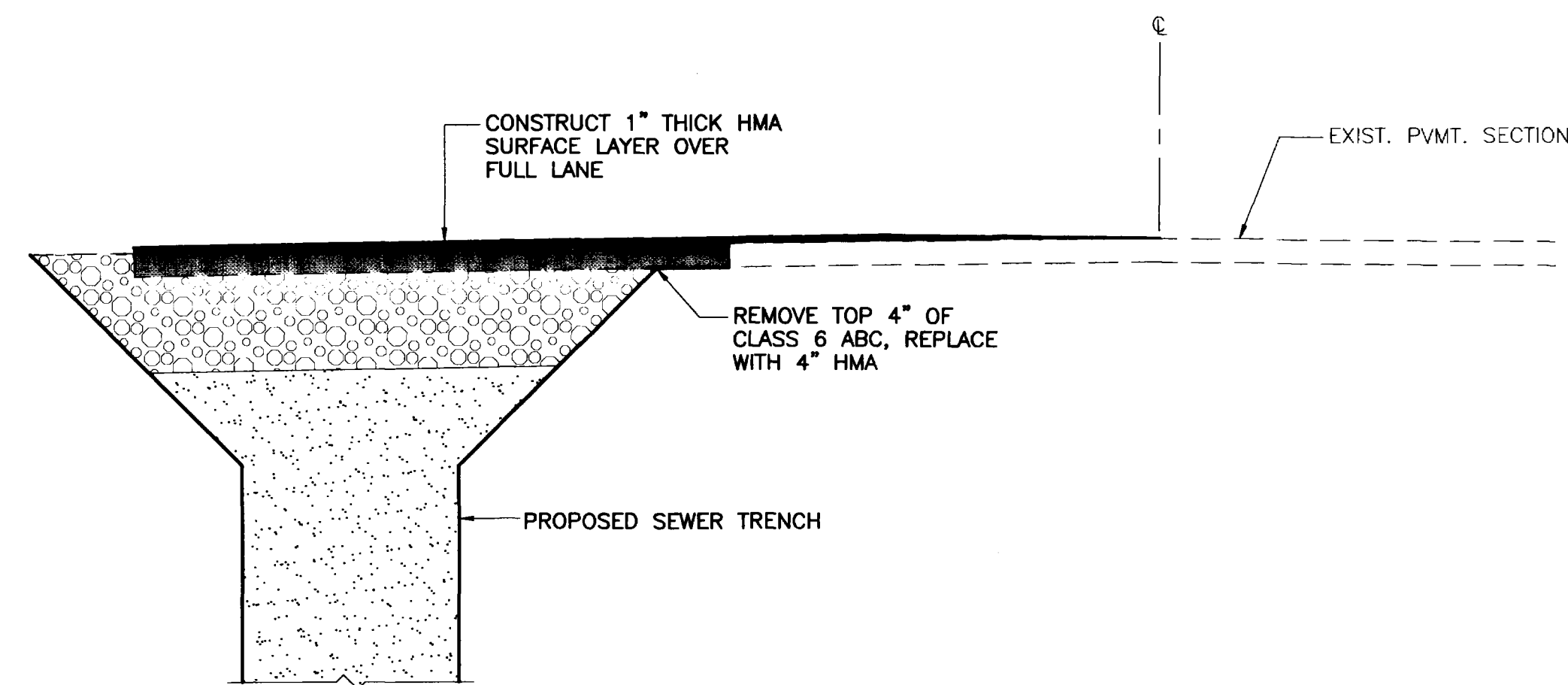
SECTION AT NIGHT PRIOR TO PAVING
(VIEW EAST - NTS)



SECTION AT NIGHT PRIOR TO PAVING
(VIEW EAST - NTS)



SECTION AFTER PAVING
(VIEW EAST - NTS)



SECTION AFTER PAVING
(VIEW EAST - NTS)

REVISION	DESCRIPTION	DATE
REVISION Δ	_____	_____
REVISION Δ	_____	_____
REVISION Δ	_____	_____

HORIZONTAL				0 1 2 4
VERTICAL				

WILLIAMS ENGINEERING
1231 19 ROAD, FRUITA, COLORADO 81521-9689
(970) 858-1014 PHONE (970) 858-1007 FAX

APPLETON SEWER
EXTENSION & SEWERLINE IMPROVEMENTS
Frontage Rd. Pvm. Replacement Dtls.

SHEET 9
FILENAME AP-09.DWG