

OUTFALL LINE AND WASTE STABILIZATION POND FOR PANORAMA IMPROVEMENT DISTRICT 1973



LOCATION MAP
SCALE: 1"=2000'

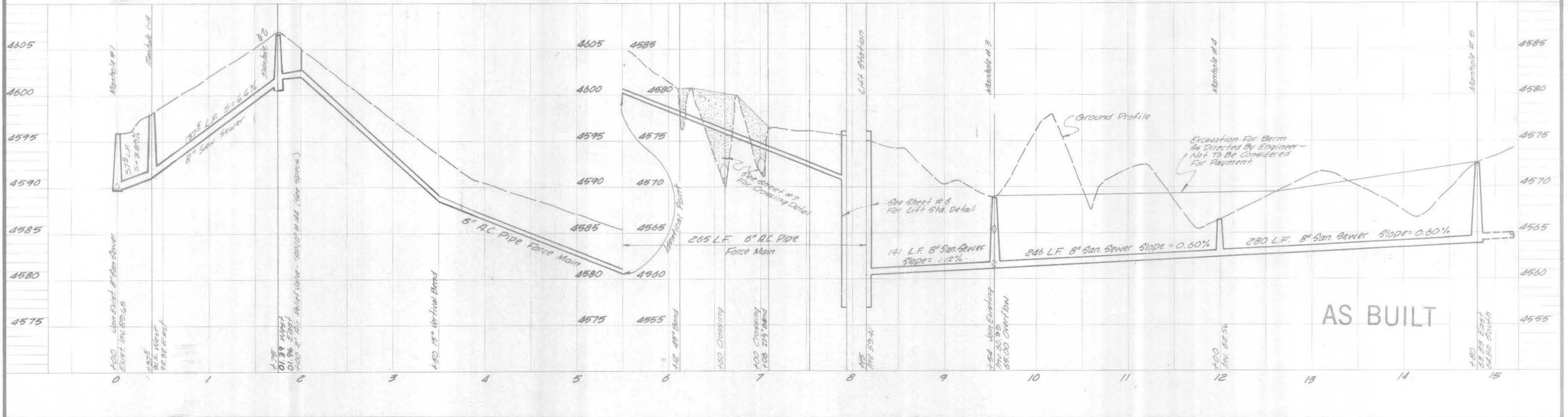
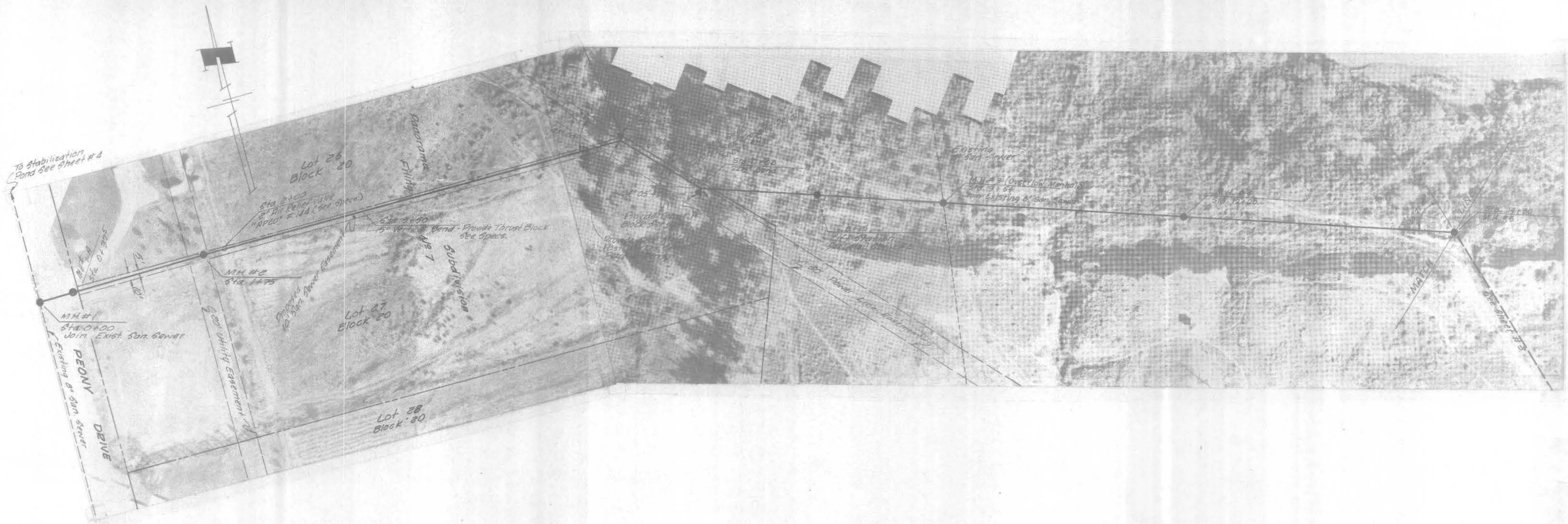


NELSON HALEY PATTERSON AND QUIRK INC.

ENGINEERING CONSULTANTS

GRAND JUNCTION & GREELEY, COLORADO

AS BUILT



NO.	BY	DATE	APPROVED	REVISIONS

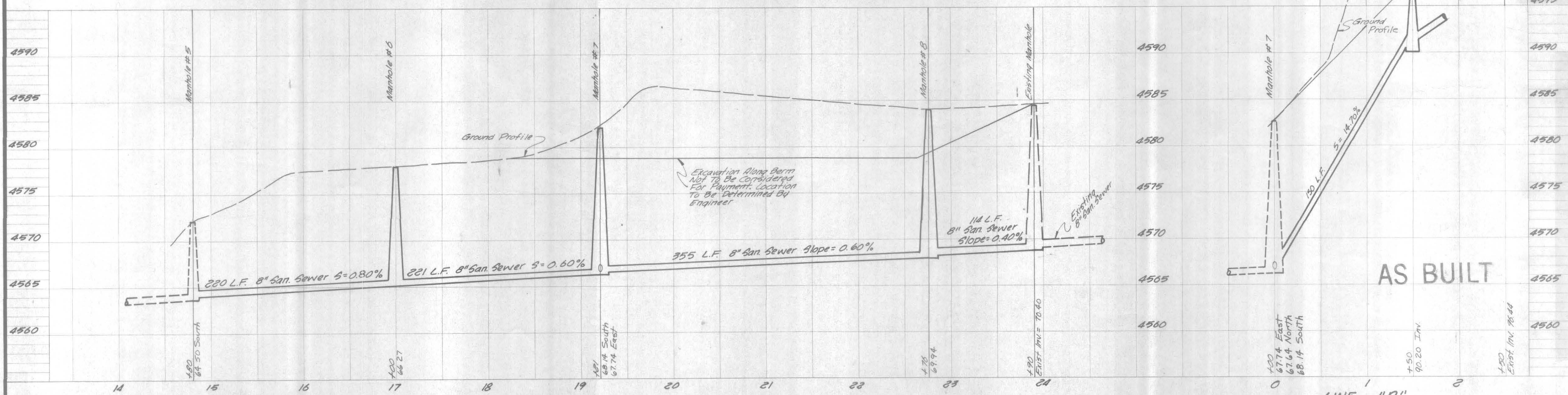
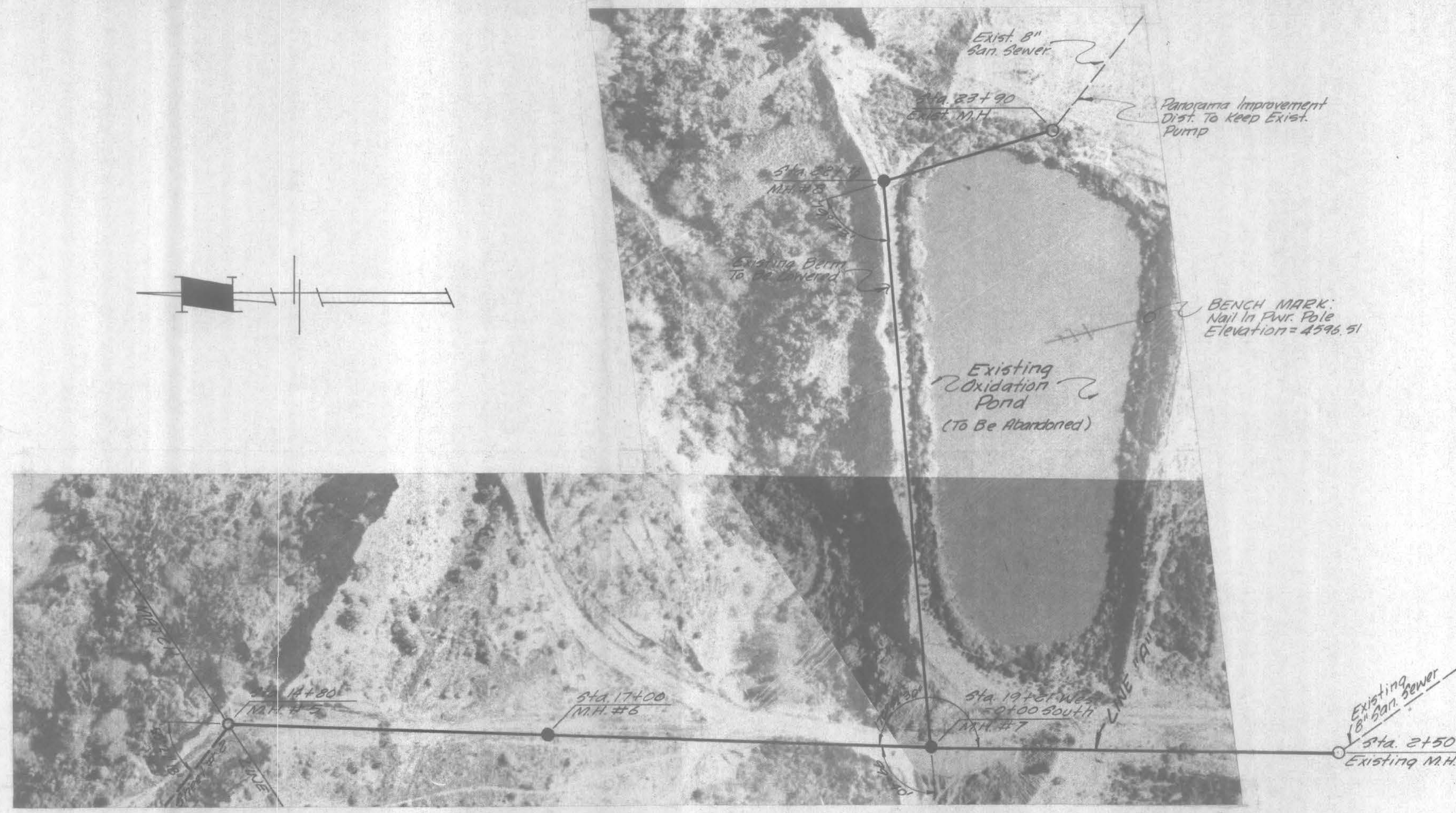
DATE: March, 1973
 DRAFTSMAN: T.R.L.
 PROJECT ENGR: R.L.A.
 PROJECT WGR: G.W.B.

DEPT. HEAD: R.R.B.
 CONST. REP:
 ENGINEERING CONSULTANTS: NELSON - HALEY - PATTERSON AND QUIRK
 GRAND JUNCTION, COLORADO

PANORAMA IMPROVEMENT DIST.
 MESA COUNTY, COLORADO

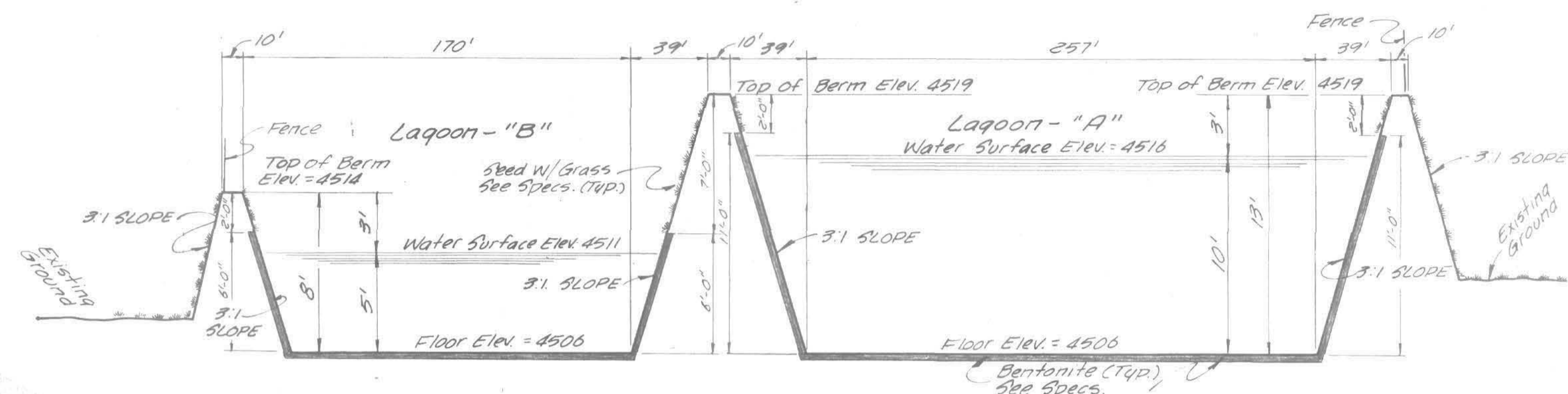
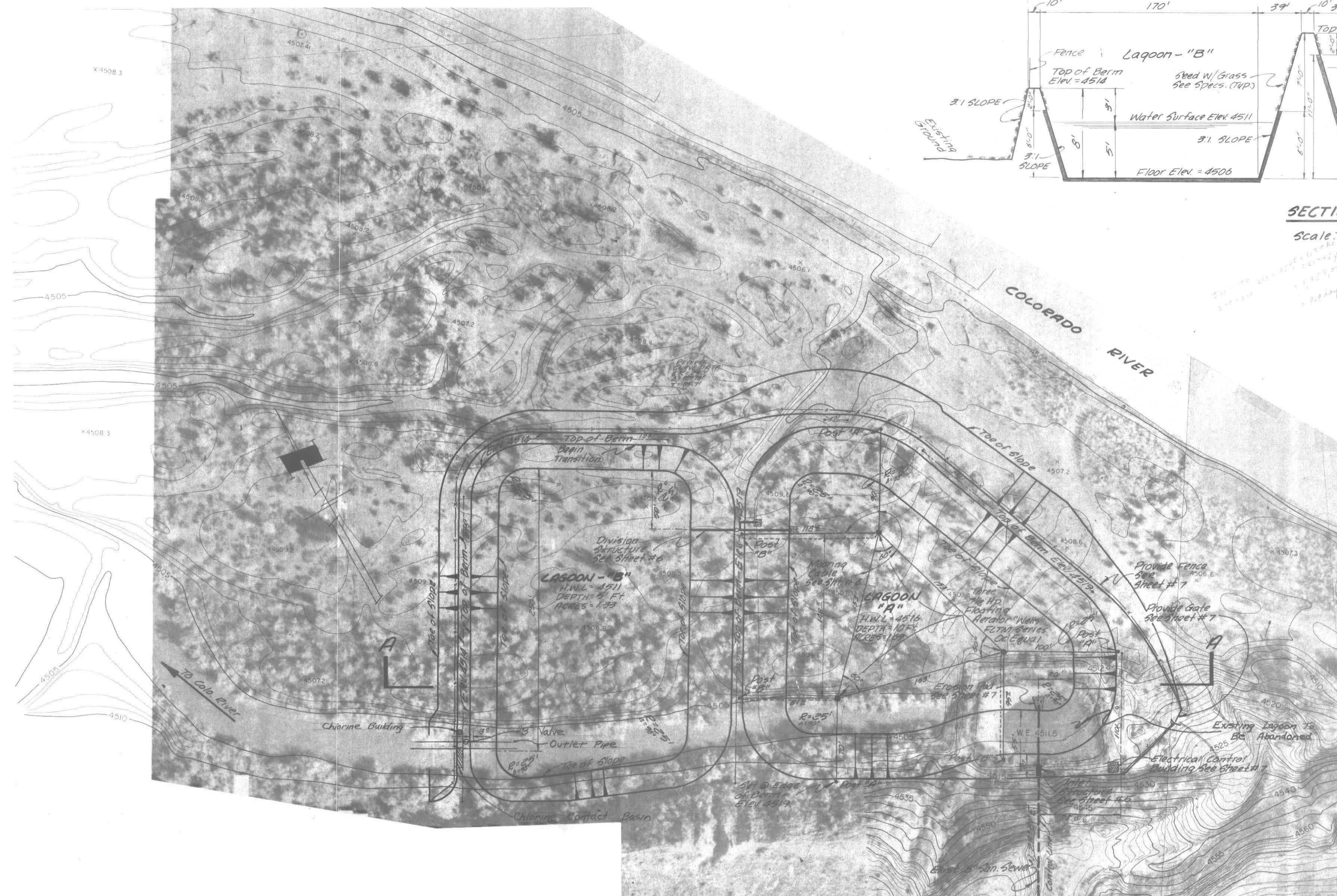
OUTFALL LINE
 MANHOLE #1 TO MANHOLE #5

7 SHEETS
 2



DATE March, 1973		DRAFTSMAN T.A.L.	DEPT. HEAD R.R.G.	ENGINEERING N.P.	NELSON - HALEY - PATTERSON AND QUIRK ENGINEERING CONSULTANTS	PANORAMA IMPROVEMENT DIST. MESA COUNTY, COLORADO	OUTFALL LINE MANHOLE #5 TO MANHOLE #8	7	SHEET 3
SCALE 1"=50' Vert. 1"=20' Horiz.		PROJECT ENGR. R.L.A.	CONST. REP.	GRAND JUNCTION COLORADO					
NO. BY DATE APPROVED		REVISIONS	PROJECT MGR. G.W.B.						

02100503.tif



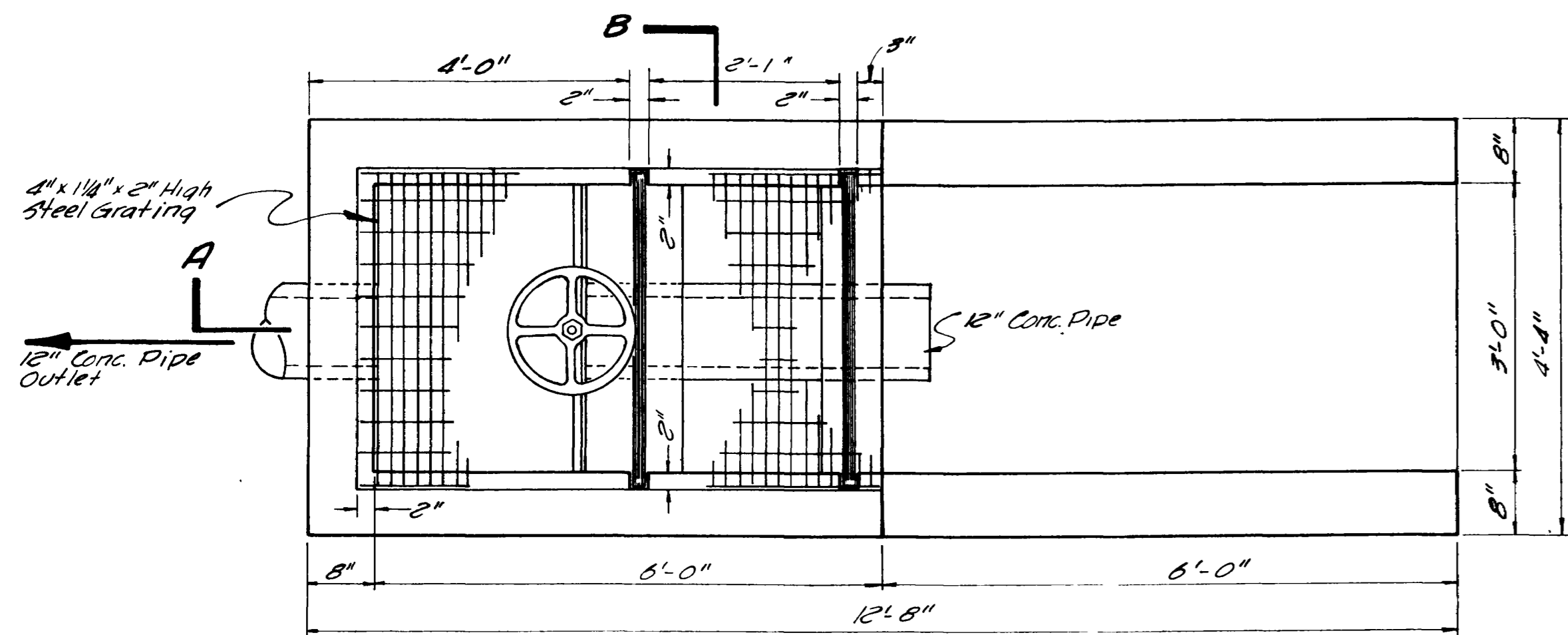
SECTION A-A
 Scale: 1" = 5' Vert
 1" = 50' Horiz

PLAN
 Scale: 1" = 50'

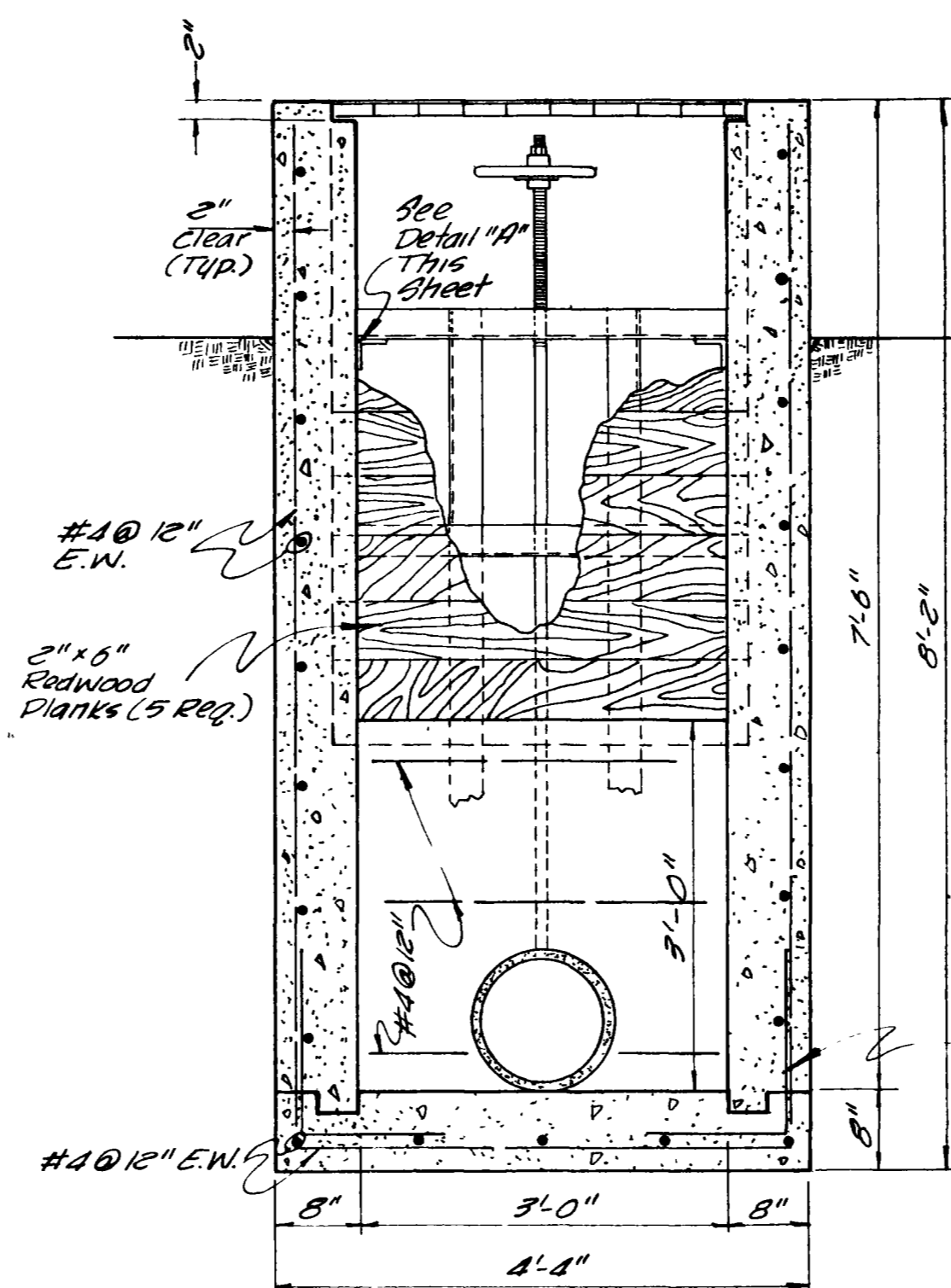
BENCH MARK:
 1511 in P.W. Pole
 South of Lagoon,
 Atop of Hill
 Elev. 4573.44

AS BUILT

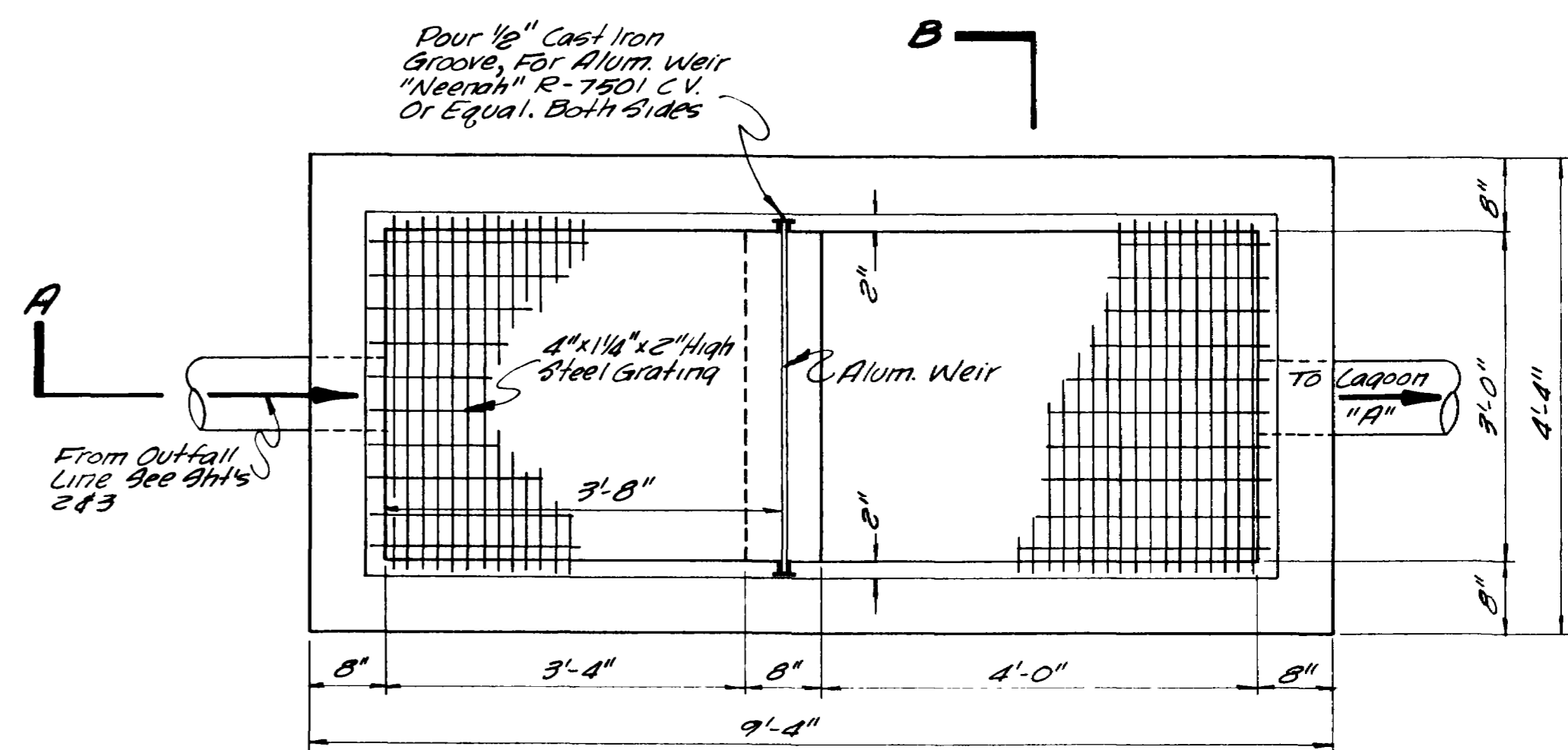
NO.		BY		DATE		APPROVED		REVISIONS	
DATE: <u>March, 1973</u> DRAFTSMAN: <u>TAL</u> PROJECT ENGR: <u>R.L.A.</u> PROJECT MGR: <u>G.W.B.</u> DEPT. HEAD: <u>R.P.S.</u> CONST. REP: _____ ENGINEERING: NELSON - HALEY - PATTERSON AND QUIRK CONSULTANTS: GRAND JUNCTION COLORADO PANORAMA IMPROVEMENT DIST. MESA COUNTY, COLORADO STABILIZATION POND SITE PLAN SHEETS: 7 / 4									



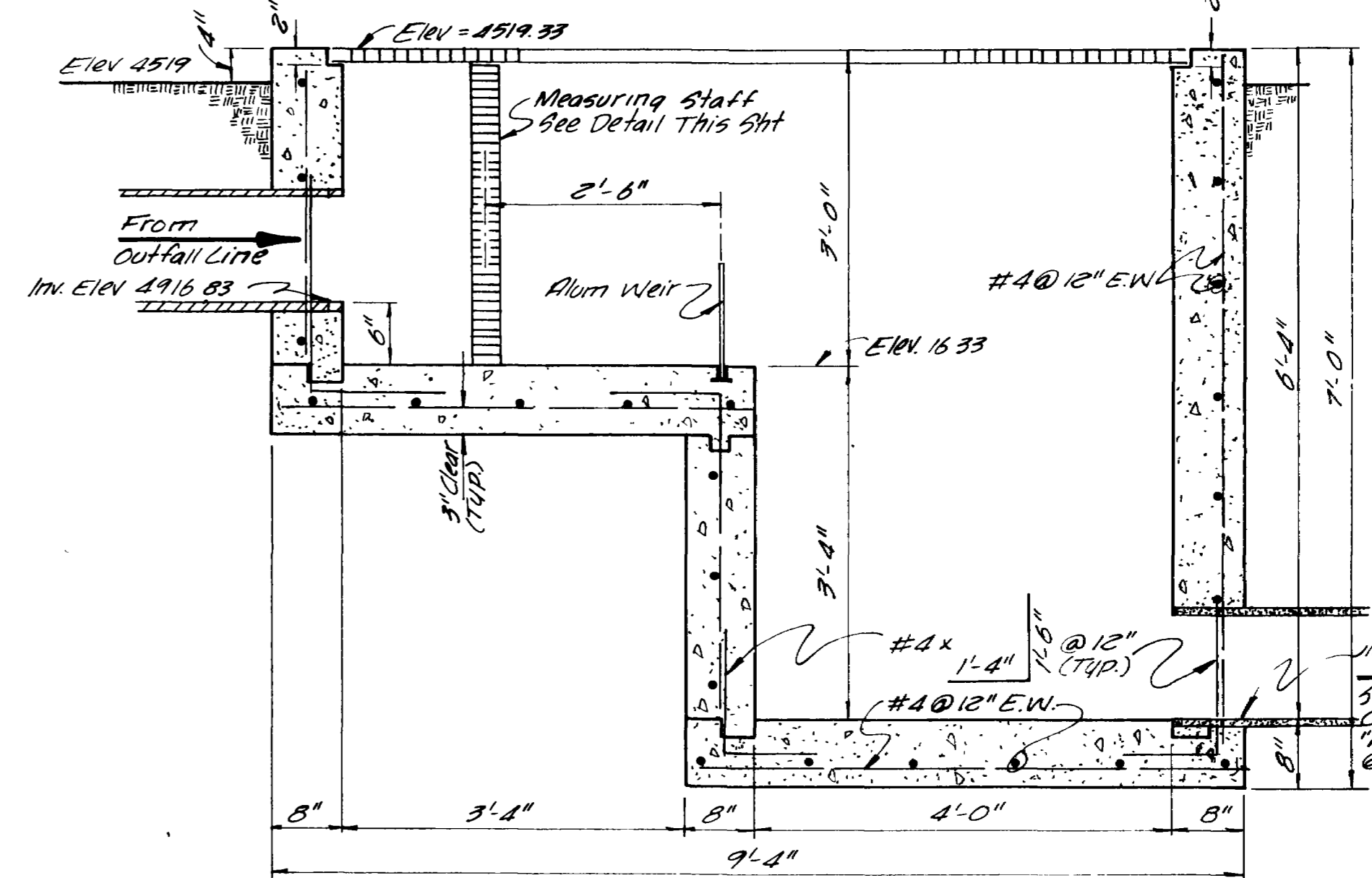
PLAN



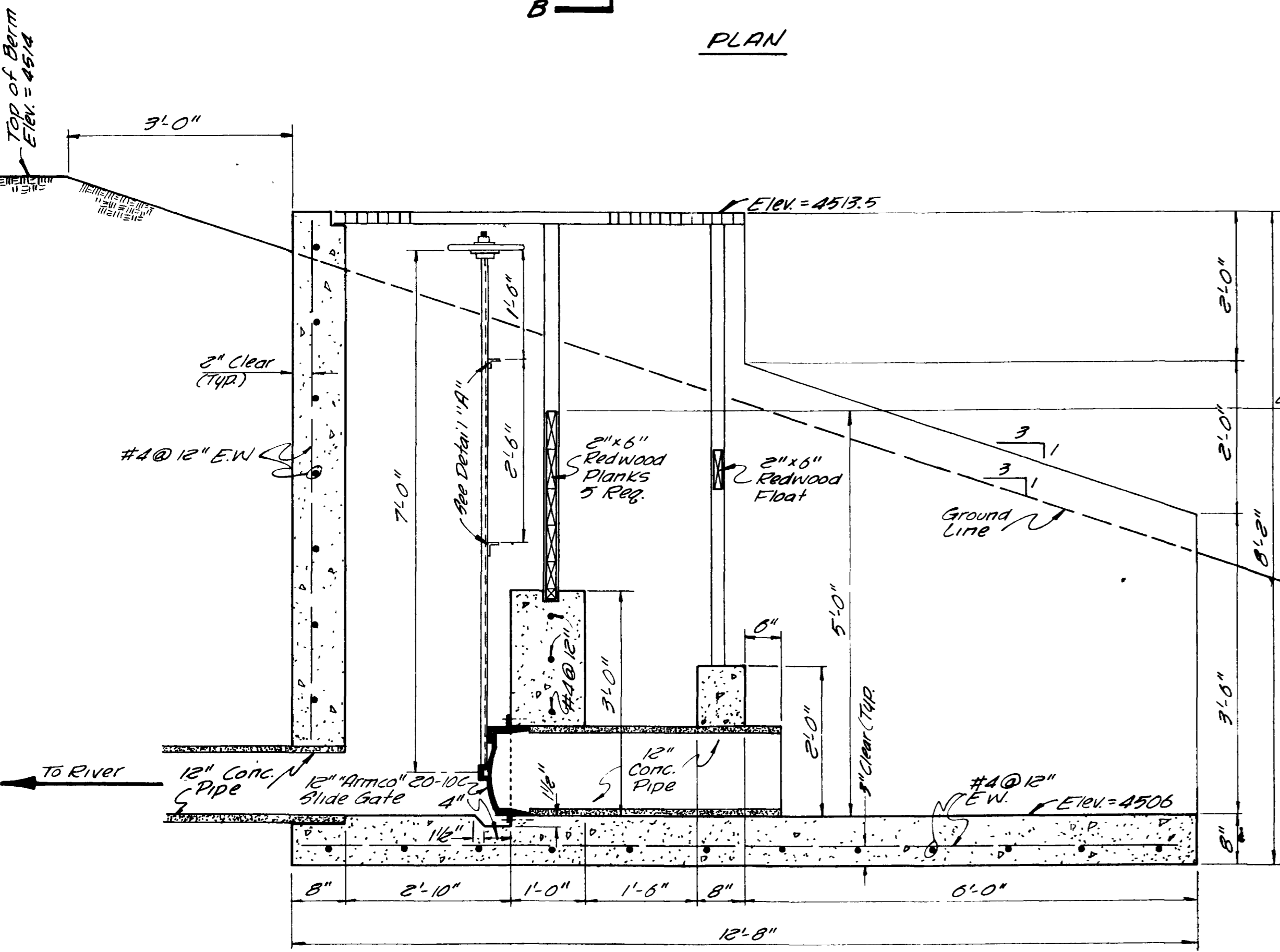
SECTION B-B



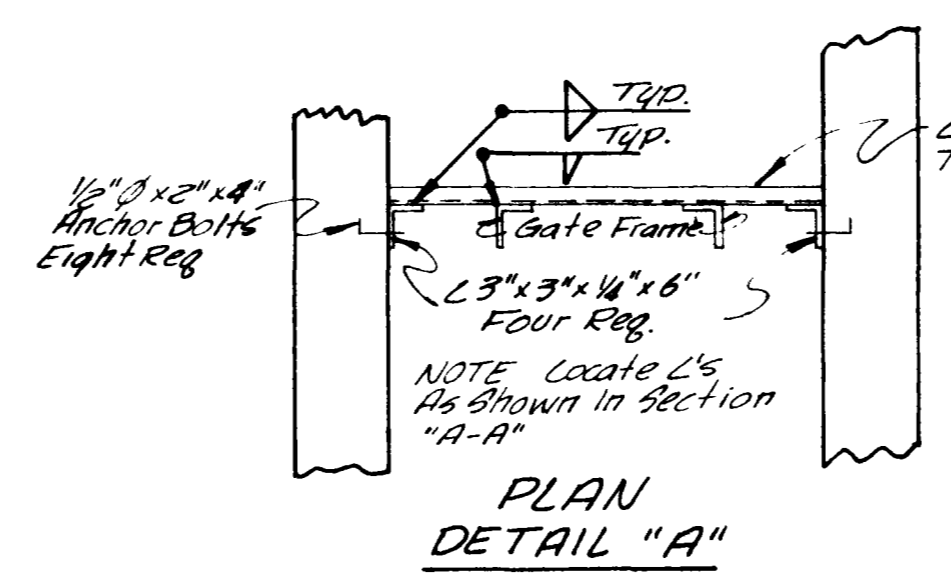
PLAN



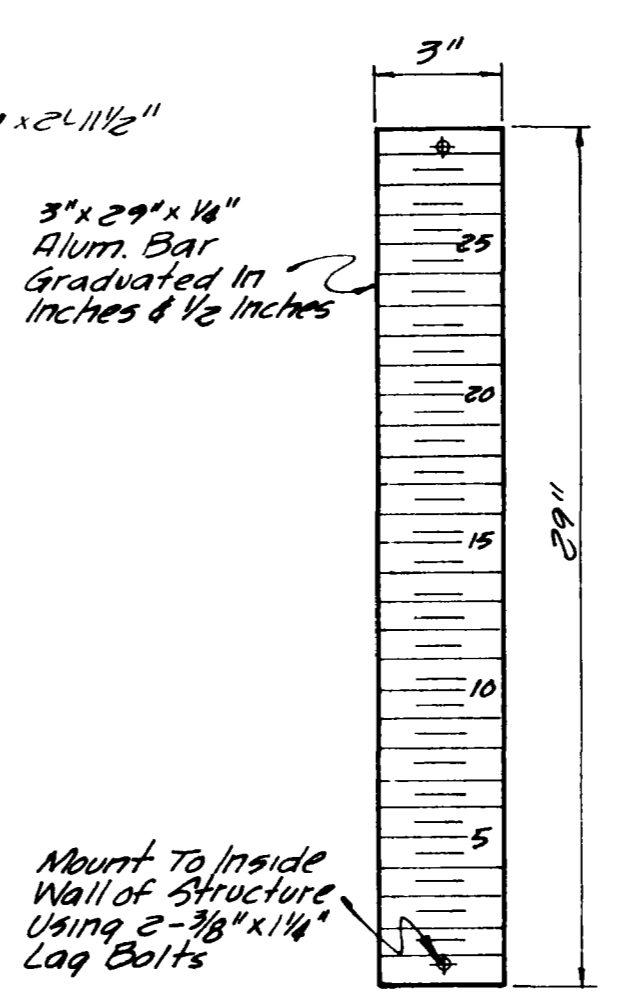
SECTION A-A



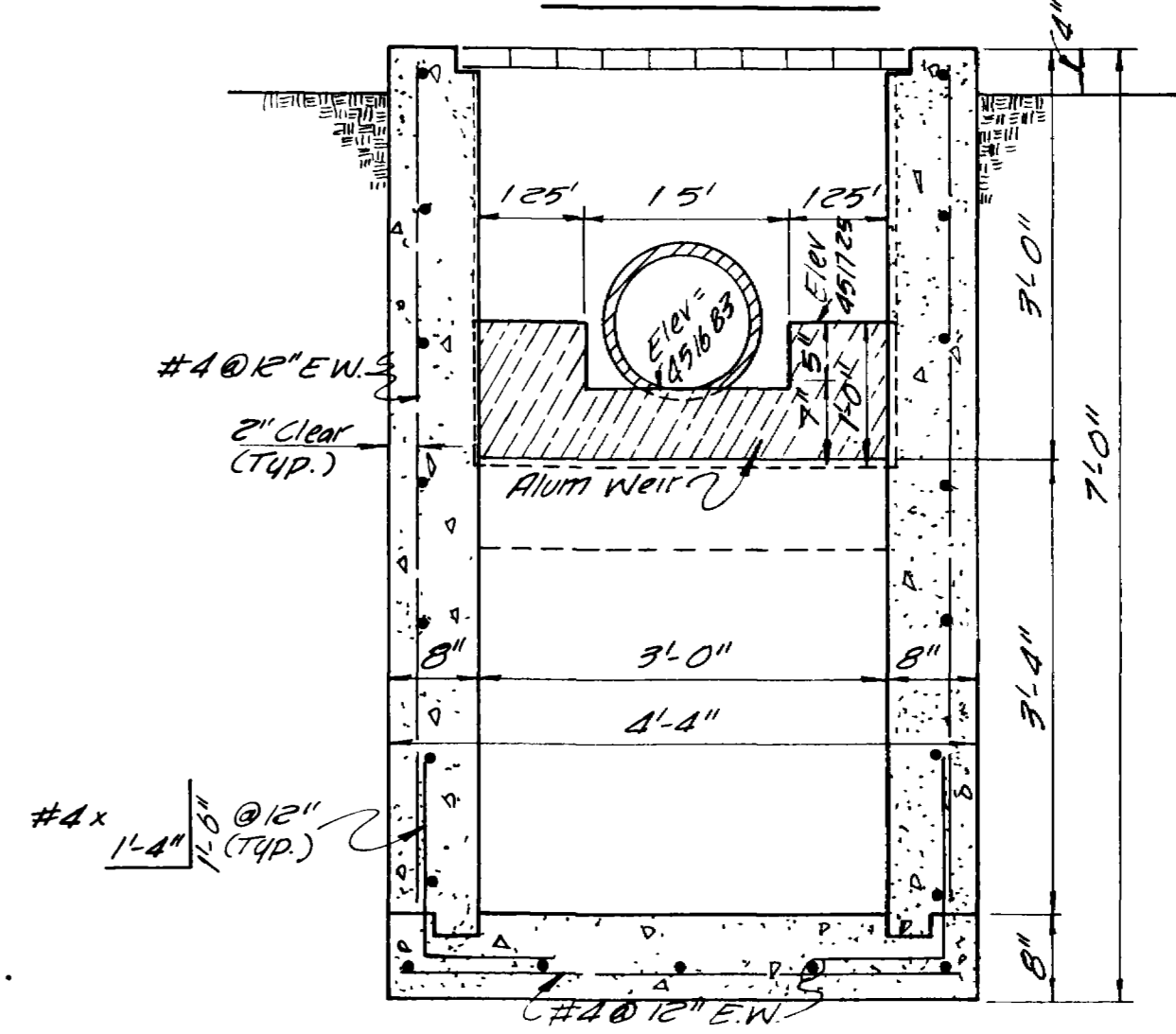
SECTION A-A



PLAN DETAIL "A"



MEASURING STAFF DETAIL
No Scale



SECTION B-B

INLET STRUCTURE
Scale 3/4" = 1'-0"

OUTLET STRUCTURE
Scale 3/4" = 1'-0"

DATE	MARCH 1973			
SCALE	AS SHOWN			
NO.	BY	DATE	APPROVED	REVISIONS

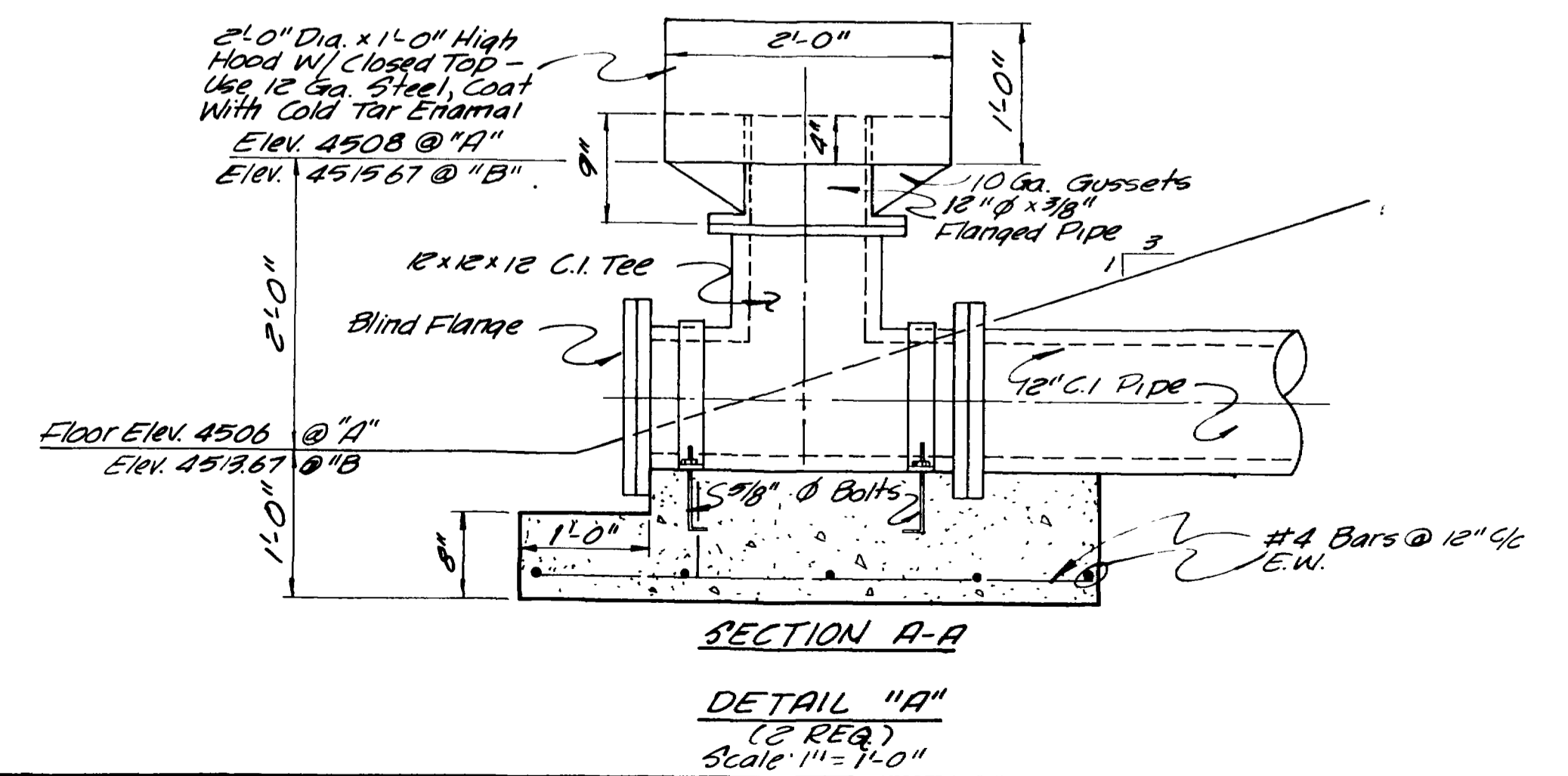
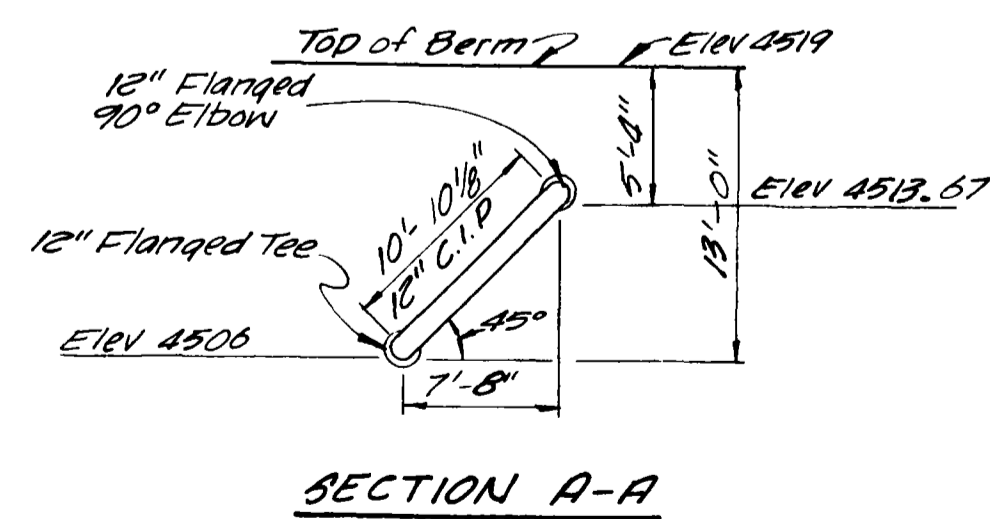
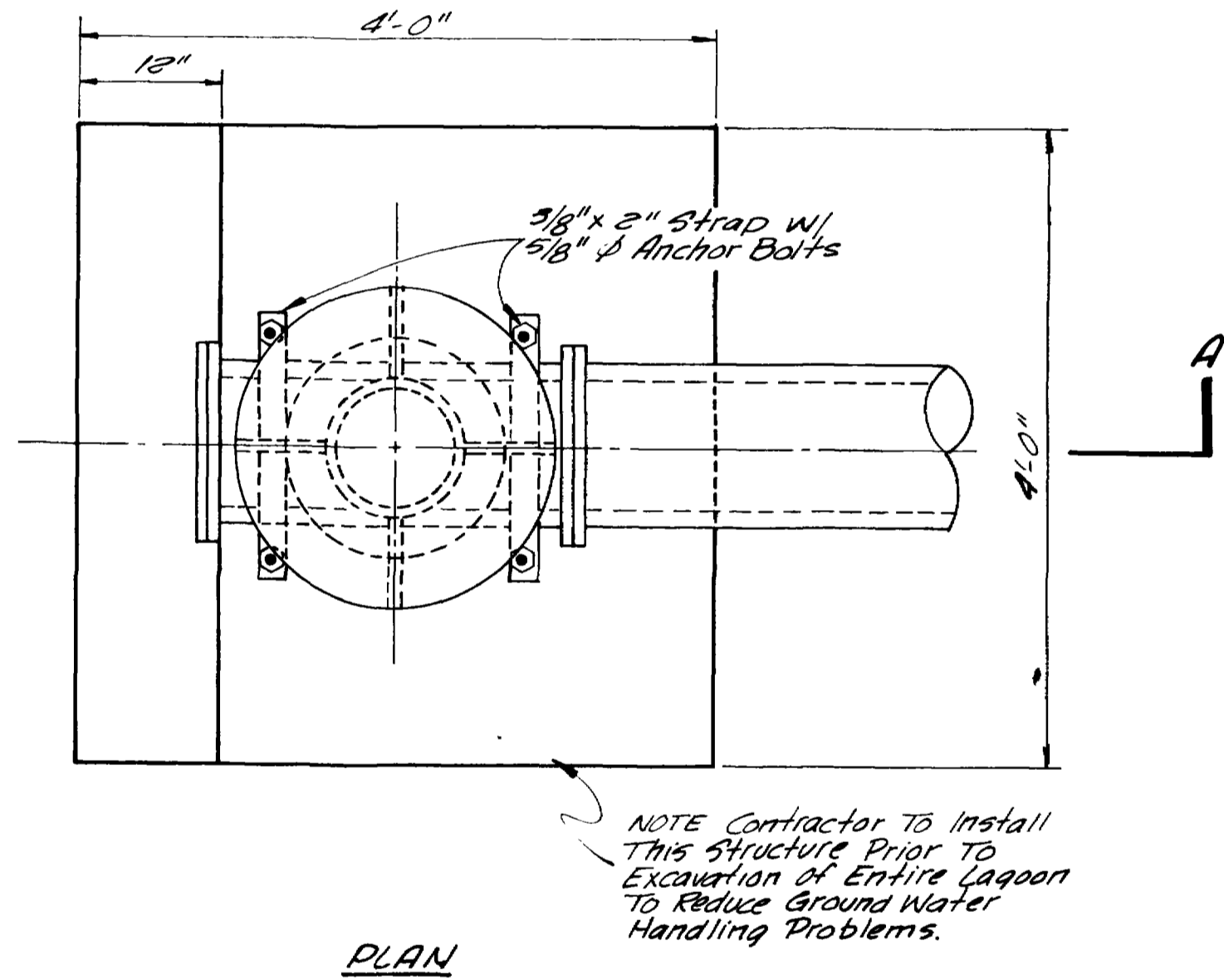
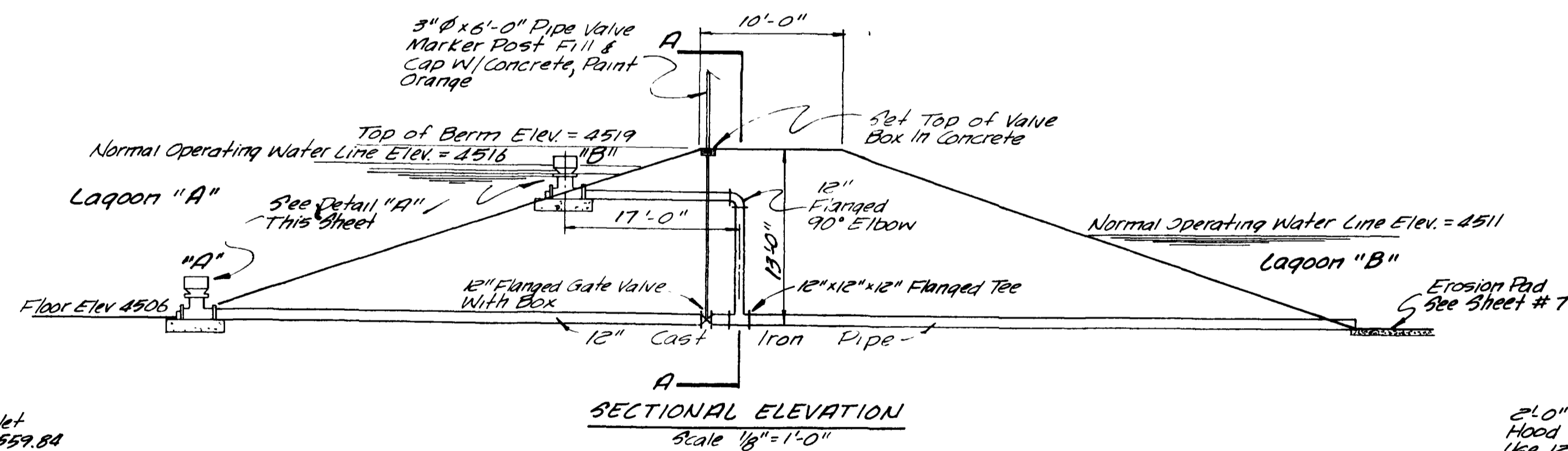
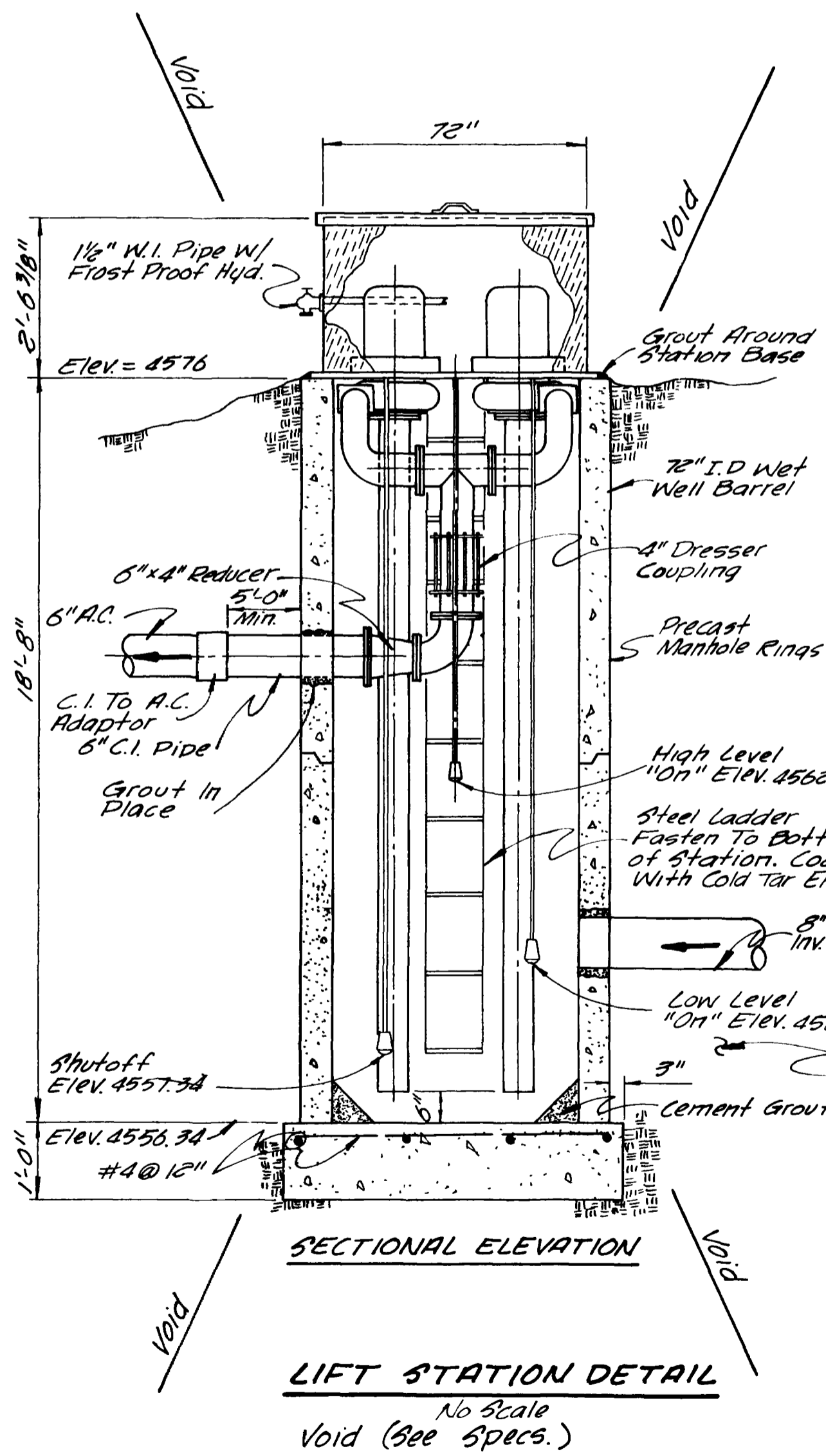
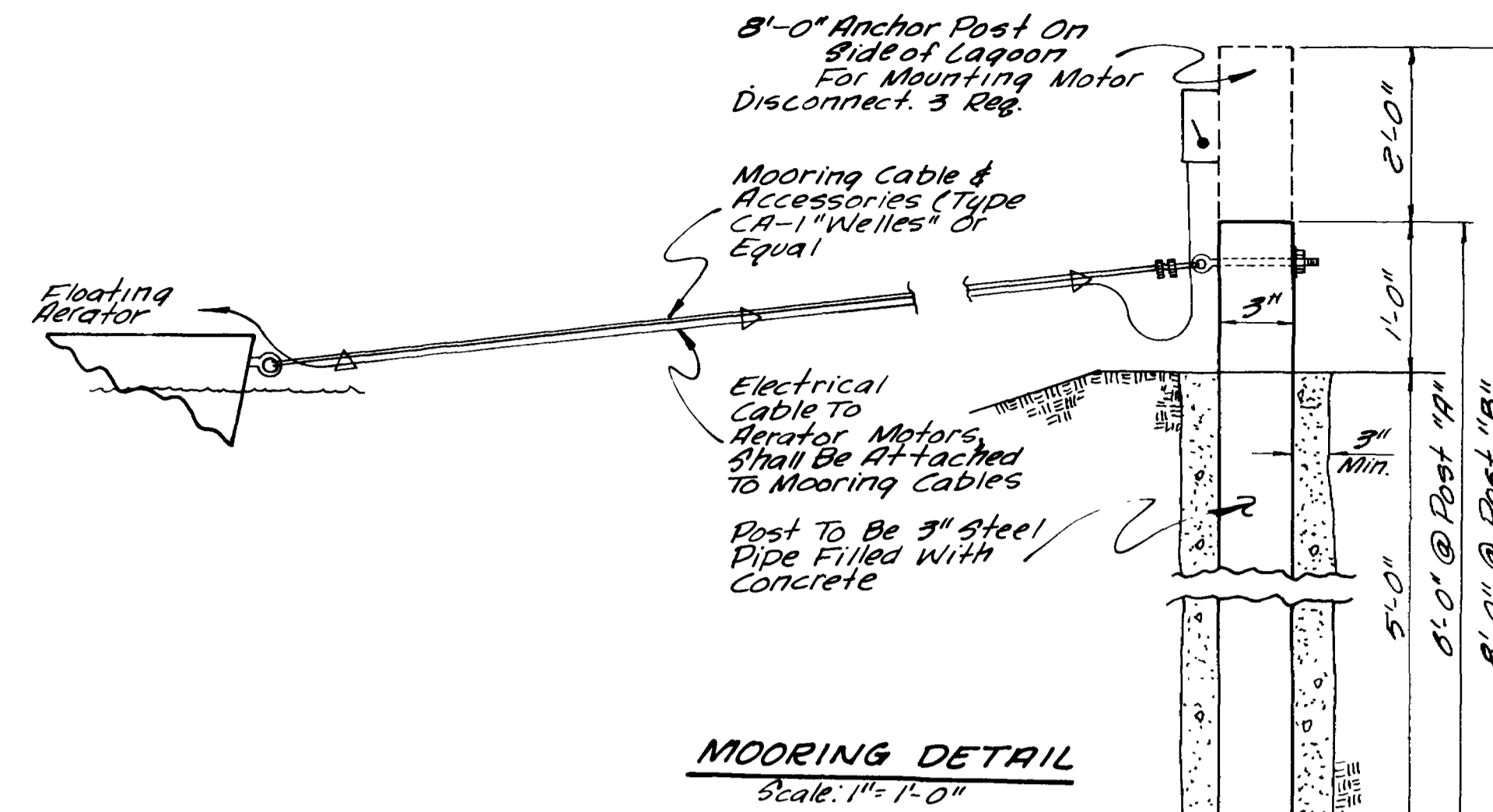
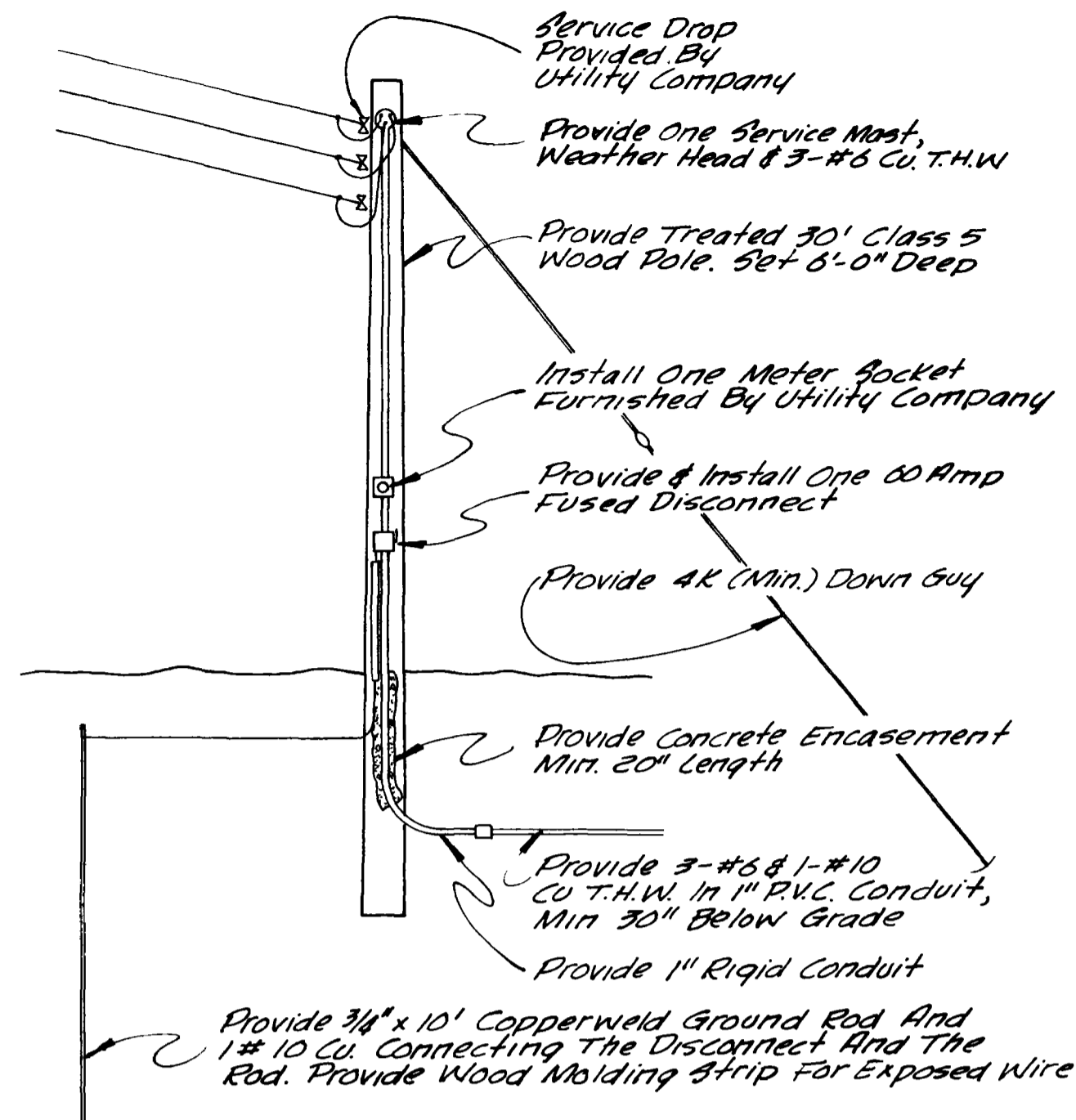
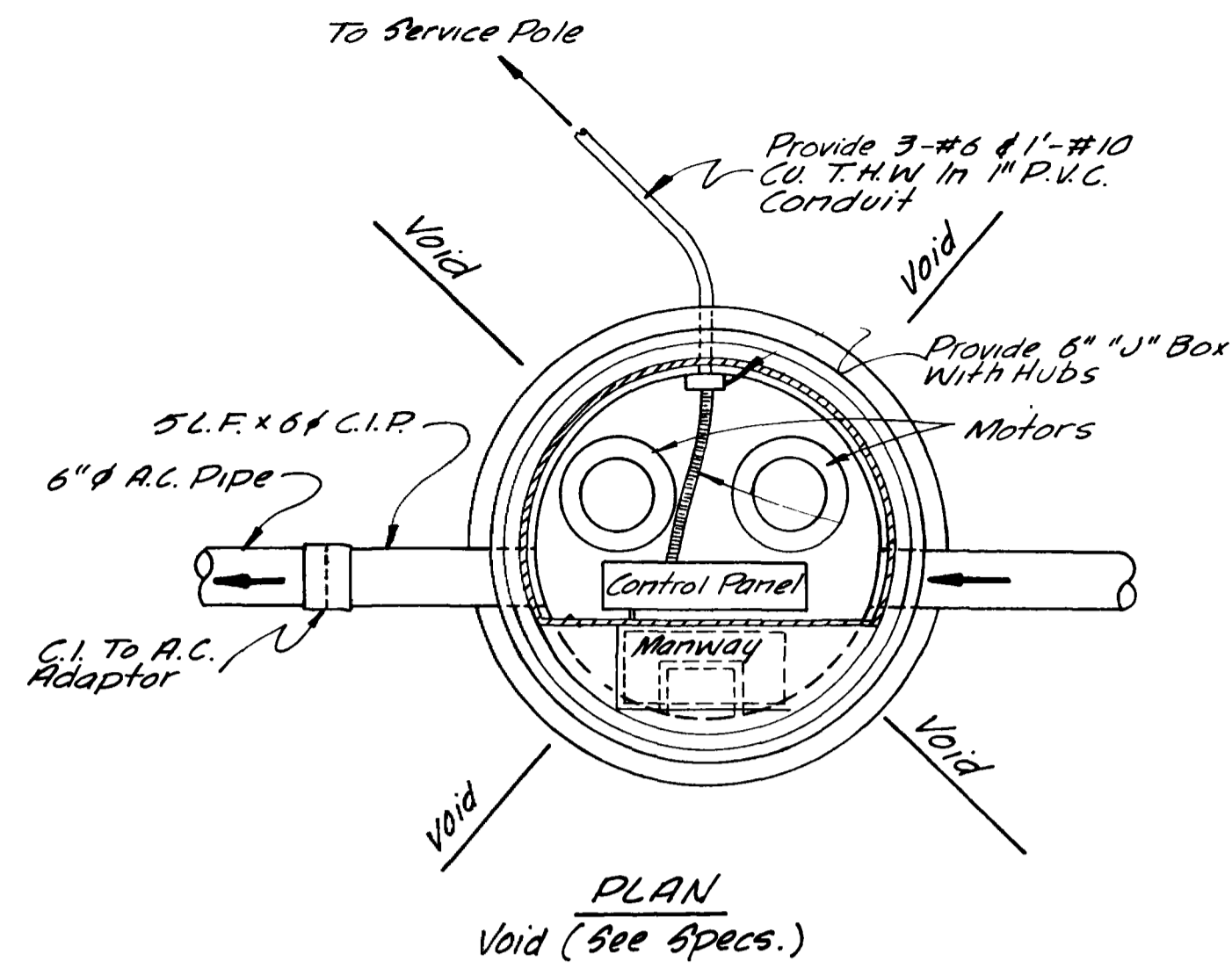
DRAFTSMAN	TAL	DEPT. HEAD	R.P.G.
PROJECT ENGR.	R.L.A.	CONST. REP.	
PROJECT MGR.	G.W.B.		

ENGINEERING CONSULTANTS
NELSON - HALEY - PATTERSON AND QUIRK
 GRAND JUNCTION COLORADO

PANAORAMA IMPROVEMENT DIST.
 MESA COUNTY, COLORADO

OUTLET STRUCTURE AND INLET STRUCTURE

SHEET	7
SHEETS	5



DIVISION STRUCTURE
Scale: As Shown

DATE March, 1973	DRAFTSMAN TAL	DEPT. HEAD R.P.G.	ENGINEERING CONSULTANTS	NELSON - HALEY - PATTERSON AND QUIRK ENGINEERING CONSULTANTS GRAND JUNCTION COLORADO	PANORAMA IMPROVEMENT DIST. MESA COUNTY, COLORADO	LIFT STATION DETAIL MOORING DETAIL DIVISION STRUCTURE	7 SHEETS	6 SHEETS
PROJECT ENGR R.L.A.	PROJECT MGR G.W.B.	CONST. REP.						

