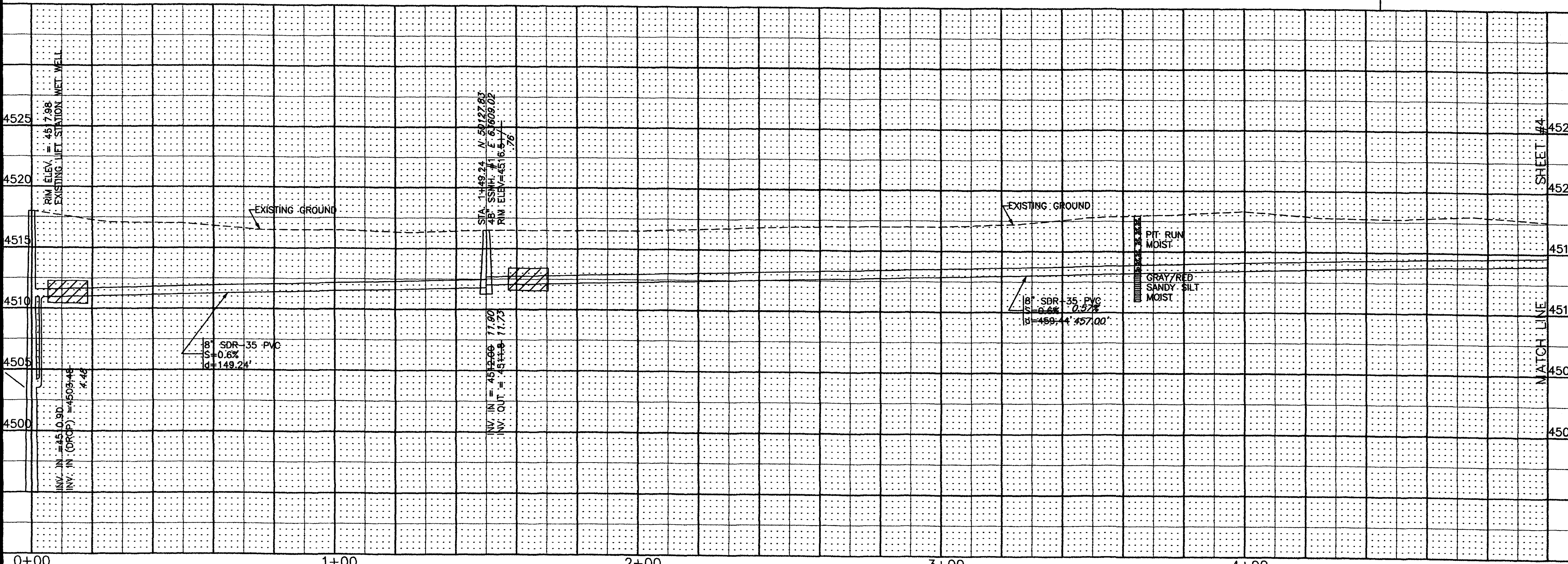


CONTROL POINTS
 NUM 400, CP. 100d NAIL
 N=50199.75
 E=63519.53
 ELEV.=4516.81
 NUM. 10057, PIN FOUND #5
 N=50022.35
 E=63737.57
 ELEV.=4513.51

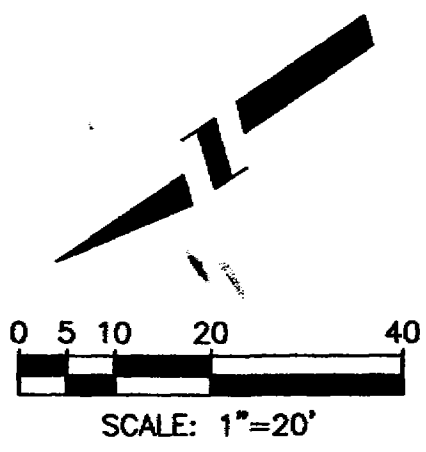
- CONSTRUCTION NOTES:**
- ① 104 Tie to existing lift station wet well. This will be a drop connection. No interior coating will be required for the existing wet well. The contractor shall core the existing wet well and provide PSX positive seal boots for the pipe connections to the wet well. See standard sanitary sewer detail SS-04.
 - ② 102/104/105 Install 8" SDR-35 PVC sewer main. Backfill trench with native materials meeting City of Grand Junction specification 103.16. Test all sewer lines prior to use in accordance with City of Grand Junction specification 105.2.
 - ③ The gate for the existing lift station shall be secured at the end of each working day. The City will provide the Contractor a lock and key for the lift station gate as well as the access gate located at the north end of Peony Drive.
 - ④ 102/104 48" Dia. sanitary sewer manhole (MH 1)1EA (N-50129.45,E-63607.35). Inlet and outlet to be with PSX gaskets. See standard detail SS-02. Manholes provided shall be watertight with no visible leakage on the interior of the manhole. Install clay cutoff wall 10' upstream of manhole. Cutoff wall shall extend 6" below to 6" above any import fill material for the full width of the trench. If native material is not suitable, the Contractor shall import material in accordance with section 103.10 of the City of Grand Junction, Standard Specifications for the construction of Underground Utilities dated February 2001.
 - ⑤ The Contractor shall be responsible for protection of existing lift station facilities during construction of the new sewer extension.
 - ⑥ 304.06 4" CI-6 base course 10' width along alignment of new sewer line. CI-6 base course shall be compacted to not less than 94% of maximum density determined by AASHTO-T180. (LF)
 - ⑦ Clay cut off wall (TYP).
 - ⑧ PROTECT EXISTING FENCE & GATE IN PLACE.



REVISION	DESCRIPTION	DATE	DRAWN BY	DATE	SCALE
AS BUILT PER CONTRACTORS NOTES		11/20/01	L. MARTIN	7/2001	HORIZ. 1"=20' PROFILE 1"=20'
			S. B. G.	7/2001	HORIZ. 1"=20' PROFILE 1"=20'
					VERT. 1"=5'

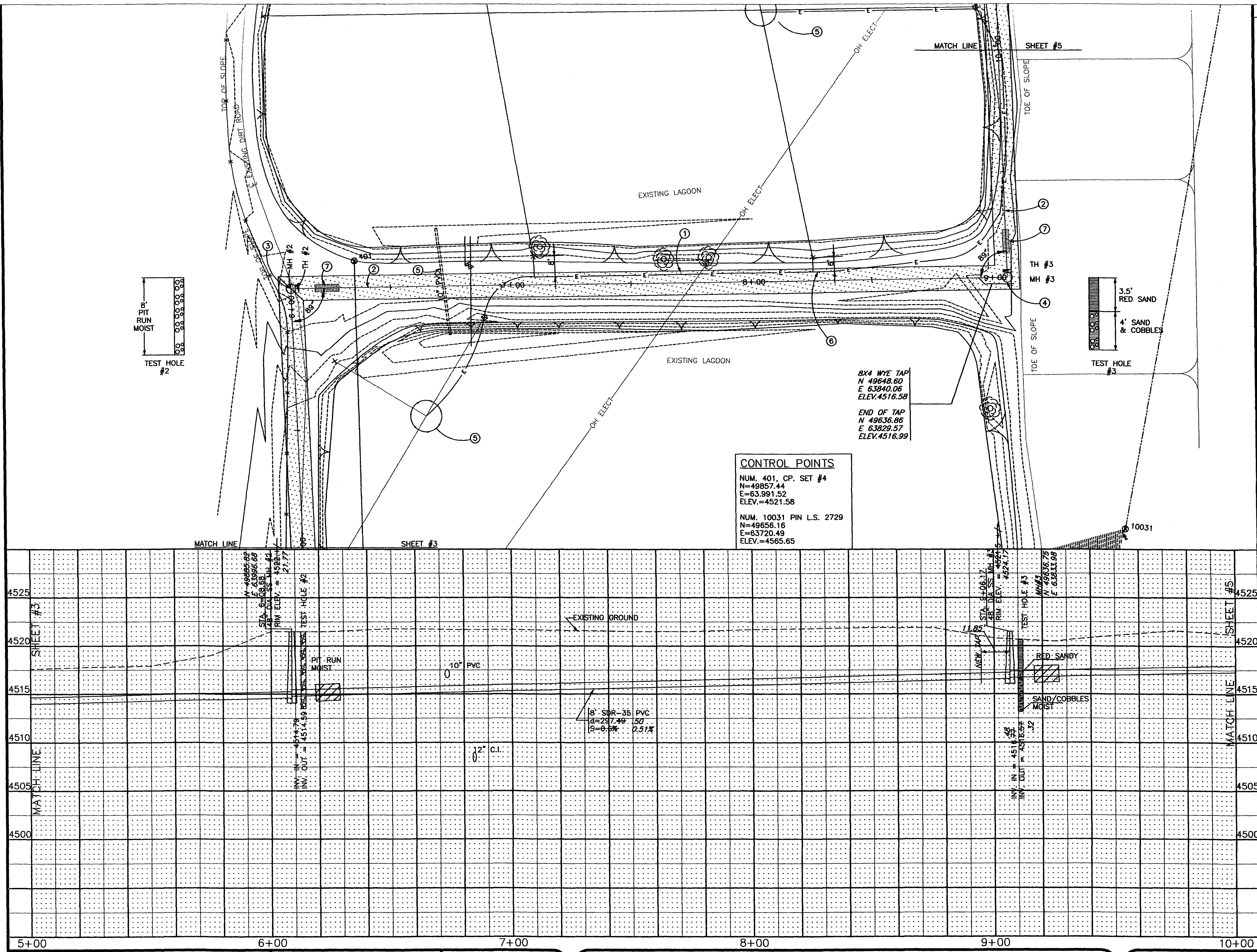
**DEPARTMENT OF PUBLIC WORKS AND UTILITIES
 ENGINEERING AND TECHNICAL SERVICES DIVISIONS
 CITY OF GRAND JUNCTION, COLORADO**

**PANORAMA SEWER DISTRICT EXTENSION
 STA. 0+00 to STA. 5+00
 Plan & Profile**



CONSTRUCTION NOTES:

- ① 104 The Contractor shall protect existing underground electrical lines in place.
- ② 102/104/105 Install 8" SDR-35 PVC sewer main. Backfill trench with native materials meeting City of Grand Junction specification 103.16. Test all sewer lines prior to use in accordance with City of Grand Junction specification 105.2.
- ③ 102/104 48" Dia. sanitary sewer manhole (MH 2)(1 EA.) (N-49885.77,E-63996.84). Inlet and outlet to be fitted with PSX gaskets. See standard detail SS-02. Manholes provided shall be watertight with no visible leakage on the interior of the manhole. Install clay cut off wall 10' upstream of manhole. Cutoff wall shall extend 6" below to 6" above any import fill material for the full width of the trench. If native material is not suitable, the Contractor shall import material in accordance with section 103.10 of the City of Grand Junction, Standard Specifications for the construction of Underground Utilities dated February 2001.
- ④ 102/104 48" Dia. sanitary sewer manhole (MH 3)(1 EA.) (N-49637.33,E-63833.21). Inlet and outlet to be fitted with PSX gaskets. See standard detail SS-02. Manholes provided shall be watertight with no visible leakage on the interior of the manhole. Install clay cut off wall 10' upstream of manhole. Cutoff wall shall extend 6" below to 6" above any import fill material for the full width of the trench. If native material is not suitable, the Contractor shall import material in accordance with section 103.10 of the City of Grand Junction, Standard Specifications for the construction of Underground Utilities dated February 2001.
- ⑤ The Contractor shall be responsible for protection of existing lagoon piping and aeration facilities during construction of the new sewer extension.
- ⑥ 304.06 4" CI-6 base course 10' width along alignment of new sewer line. CI-6 base course shall be compacted to not less than 95% of maximum density determined by AASHTO-T180. (LF)
- ⑦ Clay cut off wall (TYP).



CONTROL POINTS

NUM. 401, CP. SET #4
 N=49857.44
 E=63.991.52
 ELEV.=4521.58

NUM. 10031 PIN L.S. 2729
 N=49656.16
 E=63720.49
 ELEV.=4565.65

8X4 WYE TAP
 N 49648.60
 E 63840.06
 ELEV.4516.58

END OF TAP
 N 49636.86
 E 63829.57
 ELEV.4516.99

REVISION	DATE	DESCRIPTION
REVISION A	11/20/01	AS BUILT PER CONTRACTORS NOTES
REVISION B		
REVISION C		
REVISION D		

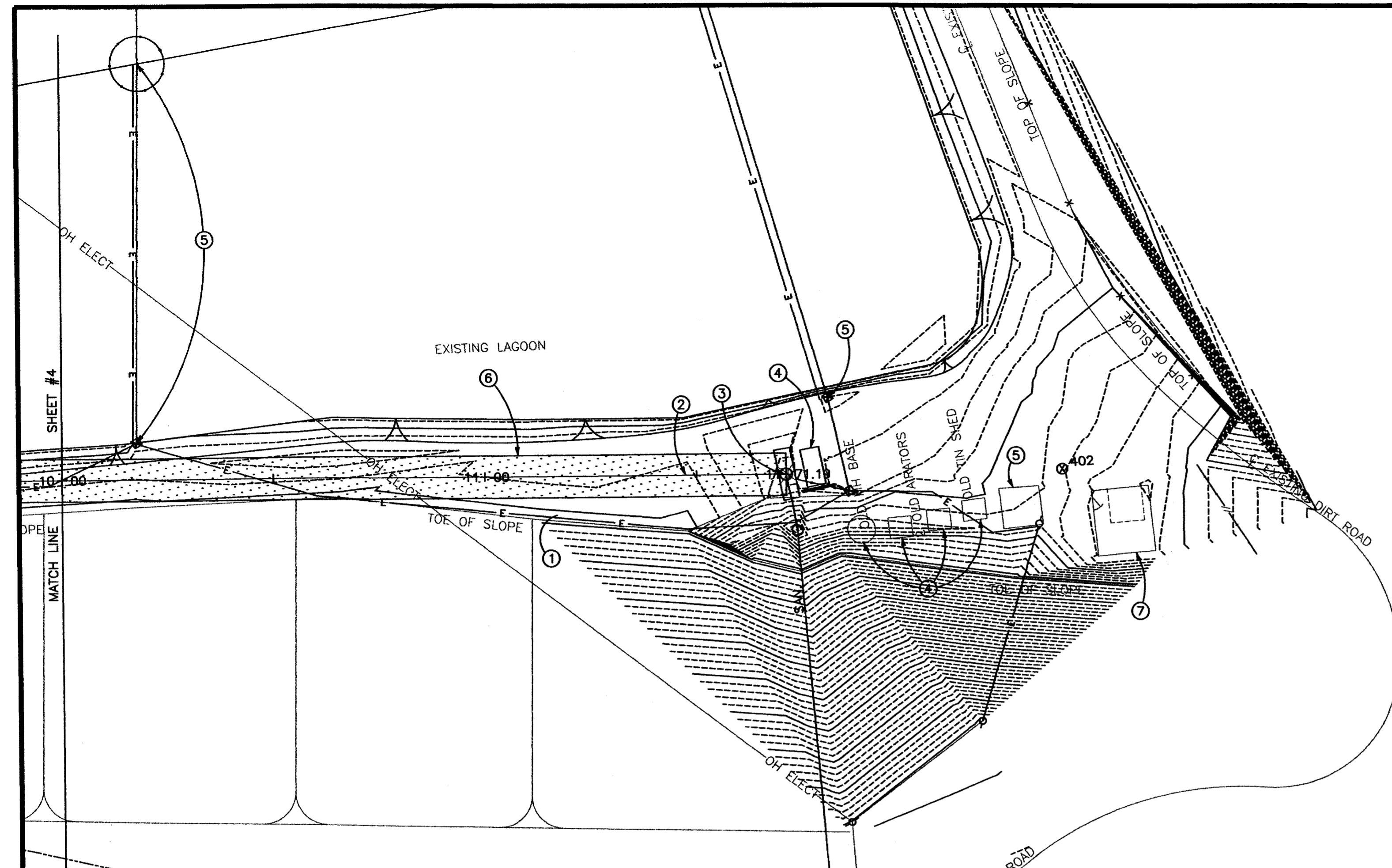
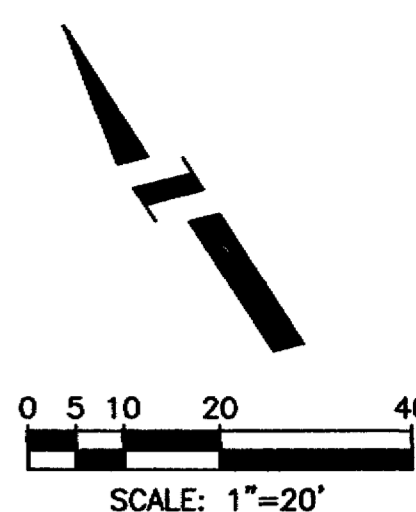
DRAWN BY	L. MARIN	DATE	7/2001
DESIGNED BY	S.B.G.	DATE	7/2001
CHECKED BY		DATE	
APPROVED BY		DATE	

SCALE	
PLAN	1"=20'
PROFILE	1"=5'
HORIZ.	1"=20'
VERT.	1"=5'

**DEPARTMENT OF PUBLIC WORKS AND UTILITIES
 ENGINEERING AND TECHNICAL SERVICES DIVISIONS
 CITY OF GRAND JUNCTION, COLORADO**

**PANORAMA SEWER DISTRICT EXTENSION
 STA. 5+00 TO STA. 10+00
 Plan & Profile**

AS CONSTRUCTED

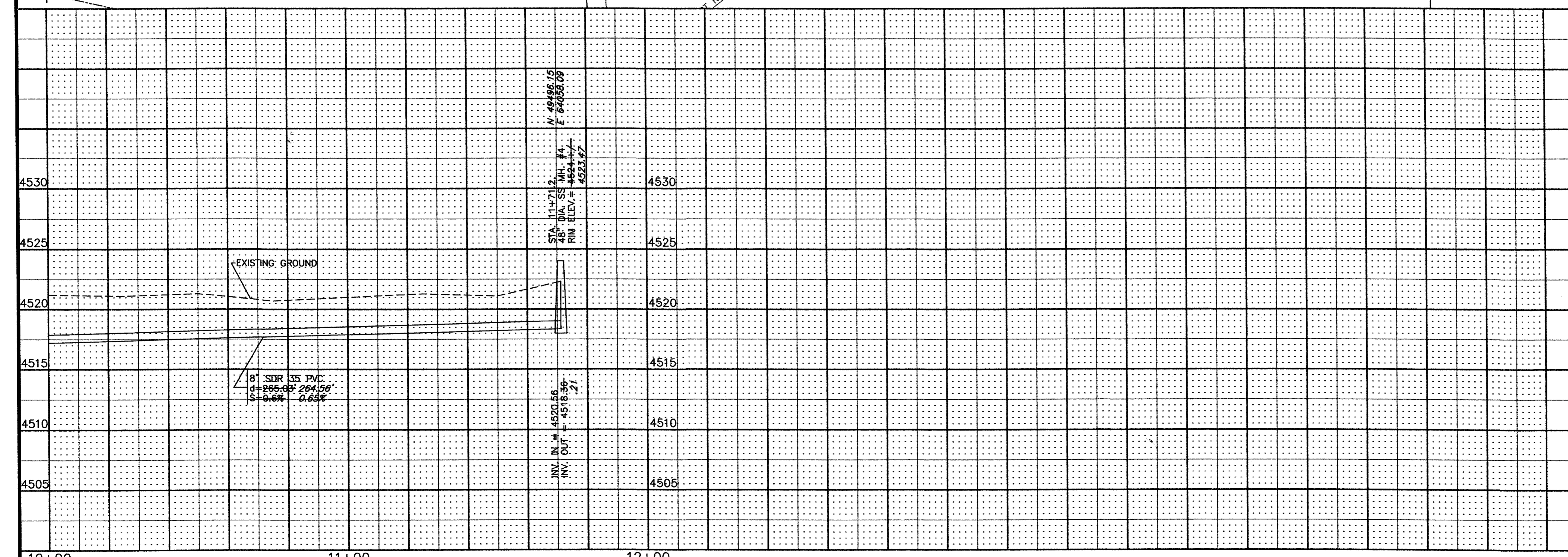


CONTROL POINTS
 NUM. 402, CP. SET #5
 N=49460.46
 E=64112.08
 ELEV.=4526.87

CONSTRUCTION NOTES:

1. The contractor shall protect existing underground electrical lines in place. No additional payment shall be made to the contractor for dealing with existing underground or overhead electric lines, MH-2 to MH-4.
2. 102/104/105 Install 8" SDR-35 PVC sewer main. Backfill trench with native materials meeting City of Grand Junction specification 103.16
 Test all sewer lines prior to use in accordance with the City of Grand Junction specification 105.2
3. 102/104 48" dia sanitary sewer manhole (mh 4) (1 EA) (N-49494.81, E-64056.66). Inlet and outlet to be fitted with PSX gaskets. See standard detail SS-02. Manholes shall be watertight with no visible leakage on the interior of the manhole. No clay cutoff wall will be required upstream of MH-4.

 The tie into the existing system shall include removal of existing concrete weir structure and connection to new MH 4 from the existing inflow pipe.
4. Remove and dispose of existing equipment, buildings, and structures. The contractor shall dispose of the equipment, buildings, and structures at an engineer approved disposal site. To be paid as lump sum.
5. The Contractor shall be responsible for the protection of Lagoon piping and aeration facilities during construction of the new sewer extension. The existing metal building houses the electrical equipment for the lagoon system. The Contractor shall protect the existing electrical equipment and building in place.
6. 304.06 4" CI-6 base course 10' width along alignment of new sewer line. CI-6 base course shall be compacted to not less than 95% of maximum density determined by AASHTO-T180. (LF)
7. The Contractor shall remove and dispose of the existing cinder block structure. The Contractor shall contact Lisa Day at 243-2541 to arrange for the removal of equipment within the building before demolition.



AS CONSTRUCTED

REVISION Δ AS BUILT PER CONTRACTORS NOTES	DATE 11/20/01	DRAWN BY L. MATRIN	DATE 7/2001	SCALE
REVISION Δ		DESIGNED BY S.B.G.	DATE 7/2001	PLAN 1"=20'
REVISION Δ		CHECKED BY	DATE	PROFILE 1"=20'
REVISION Δ		APPROVED BY	DATE	VERT. 1"=5'

DEPARTMENT OF PUBLIC WORKS AND UTILITIES
 ENGINEERING AND TECHNICAL SERVICES DIVISIONS
 CITY OF GRAND JUNCTION, COLORADO

PANORAMA SEWER DISTRICT EXTENSION
 STA. 10+00 to STA. 11+71.2
 Plan & Profile