

EXISTING MANHOLE (THE PRESERVE)

STA 0+00  
CONNECT 2 1/2" MAIN AND 4" SERVICE LATERAL TO EXISTING 8" GRAVITY MAIN AT EXISTING MANHOLE. 45.24 INV. (AT MANHOLE) MAKE CONNECTIONS TO PIPELINE, NOT TO MANHOLE.

STA 0+76.63  
45' ELBOW - FORCE MAIN INV. 46.78 (MIN.) - GRAVITY SERVICE LINE

STA 1+99.98  
45' ELBOW - FORCE MAIN INV. 49.24 (MIN.) - GRAVITY SERVICE LINE

THE PRESERVE

SEWER ALIGNMENT (GRAVITY AND FORCE MAIN) TO FOLLOW CENTERLINE OF EXISTING SEWER EASEMENT.

INSTALL 2-WAY CLEAN OUTS ON 4" GRAVITY LINE AT ALL BENDS AND AT 200' INTERVALS (MAX.)

**LIFT STATION HYDRAULIC LOADING:**

MAIN HOUSE - 350 G.P.D.  
GUEST HOUSE - 350 G.P.D.  
DETACHED B.R. - 200 G.P.D.  
WINERY (HOSE PIG) - 50 G.P.D.  
TOTAL - 950 G.P.D. (AVG.)

PEAK (Q AVG. x10) = 6.5G.P.M.

PUMPING REQUIREMENTS:  
30 G.P.M. @ 35' T.D.H. (MIN.)

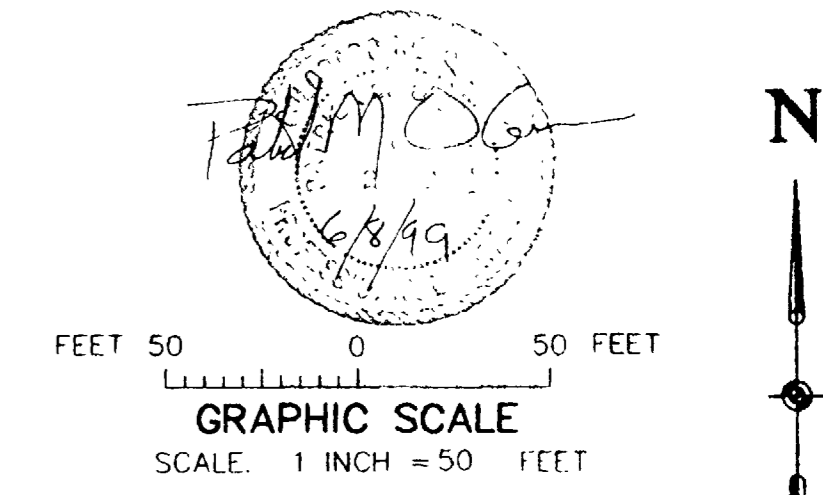
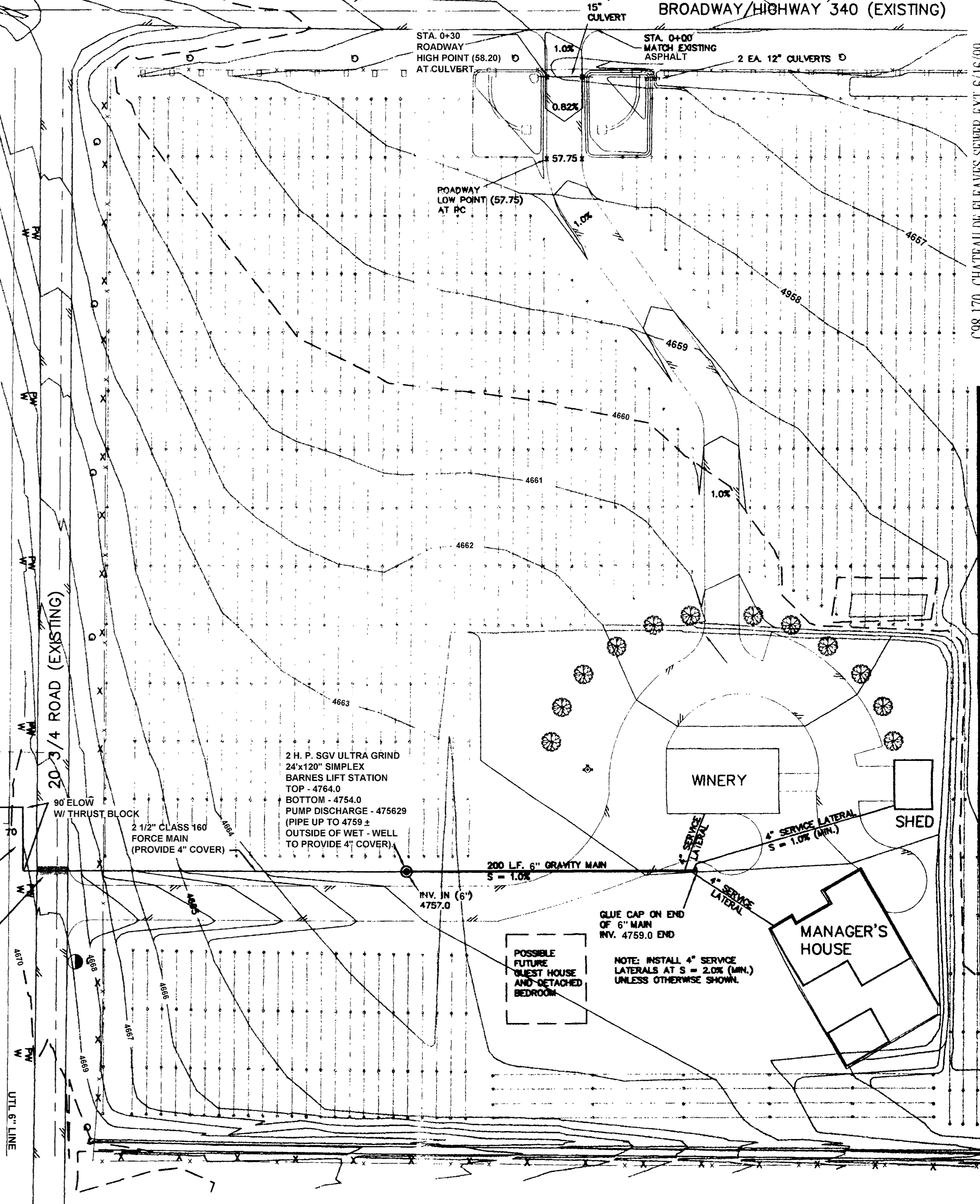
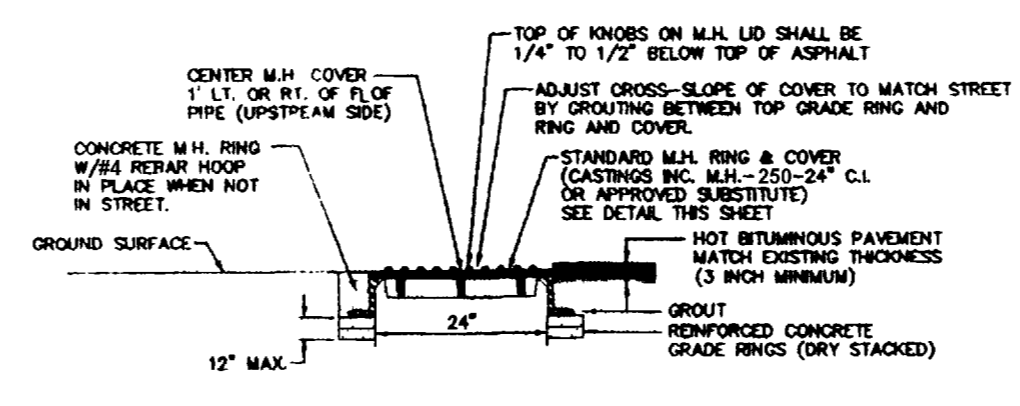
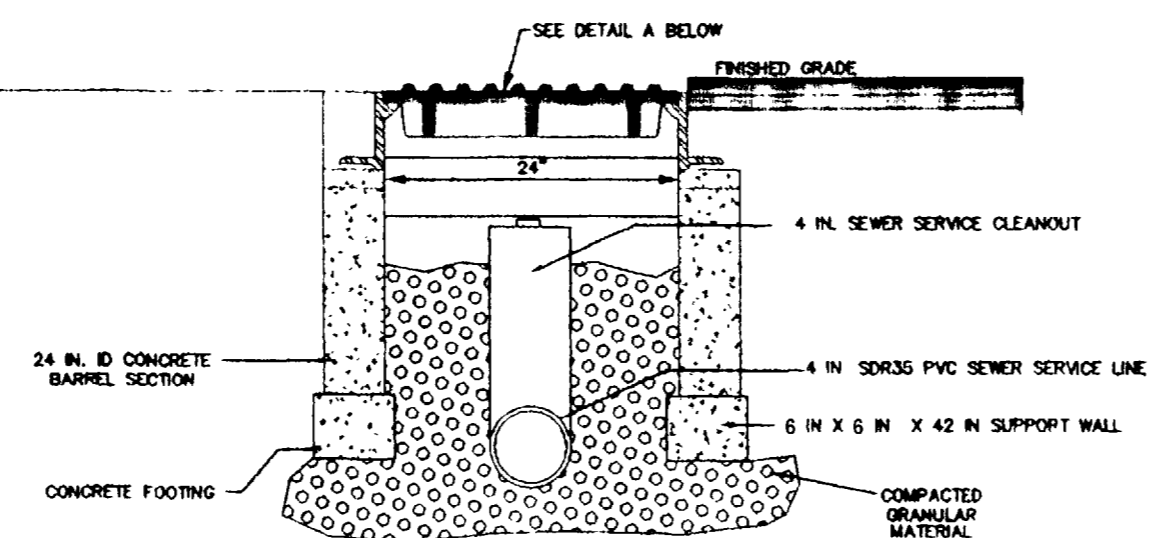
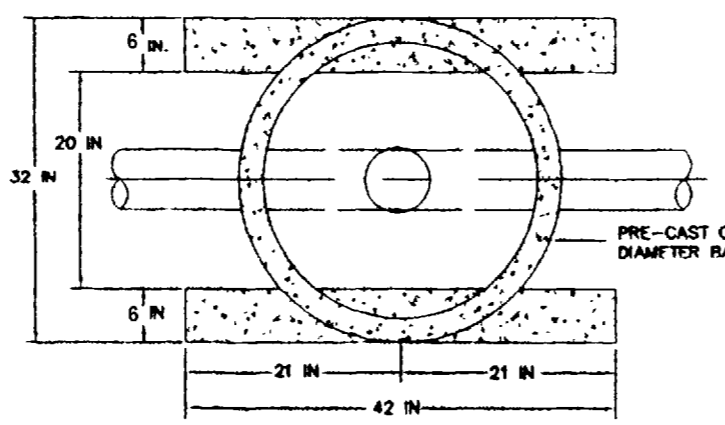
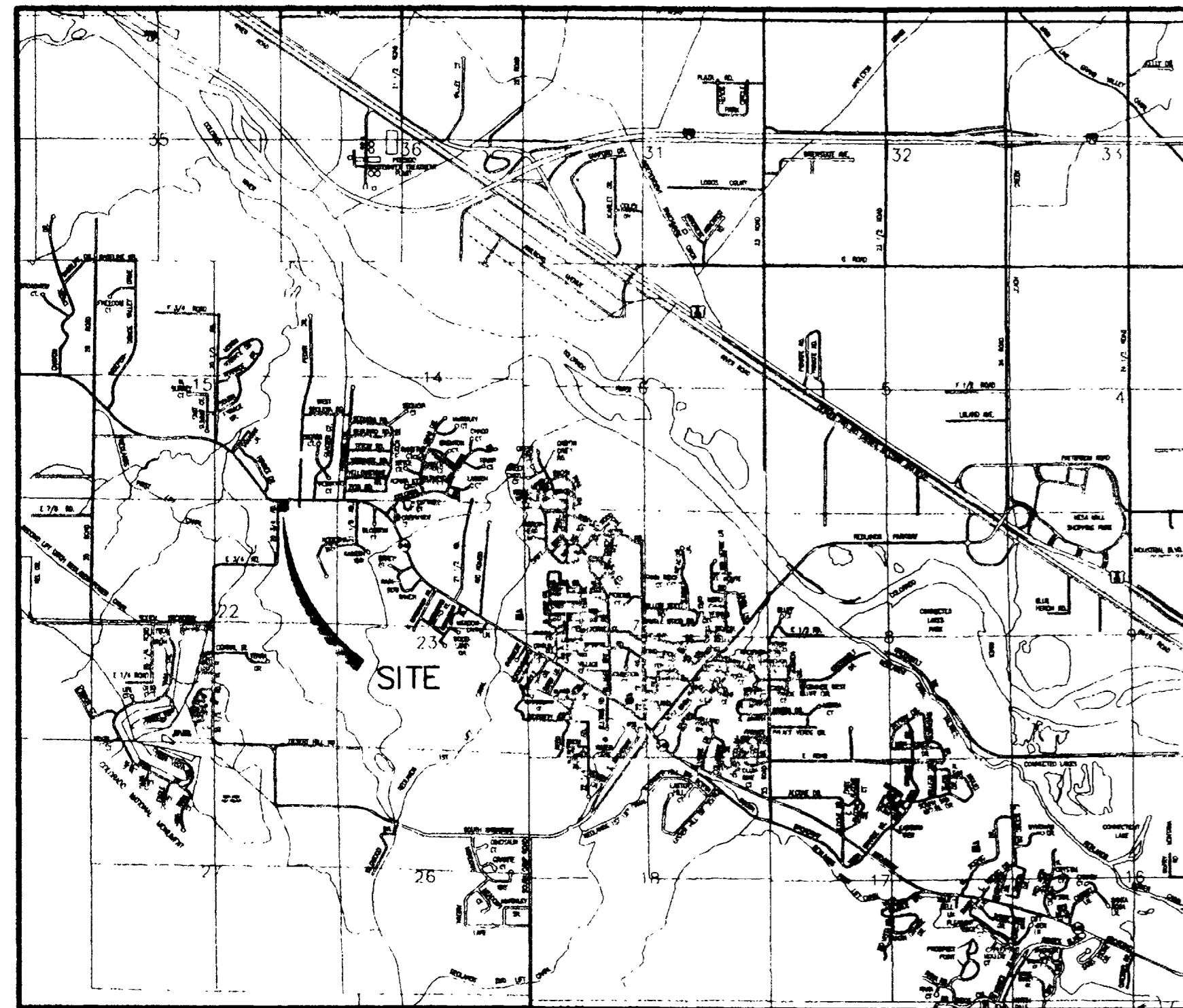
INSTALL 4" GRAVITY SERVICE LATERAL AND 2 1/2" PRESSURE MAIN IN SAME TRENCH (6" SEPARATION-MIN.) INSTALL AT 2.0% GRADE (MIN.) AND 4" COVER (MIN.)

4" GRAVITY SERVICE ASTM D-3034 PVC FROM LOT TO SOUTH. S = 2.0% (MIN.)

INSTALL SEWAGE GRADE AIR/VAC VALVE AT HIGH POINT.

VERIFY LOCATIONS OF UNDERGROUND UTILITIES PRIOR TO EXCAVATION.

CONTACT MESA COUNTY ROAD DEPARTMENT FOR PERMIT TO BORE OR OPEN CUT ROADWAY. CONSTRUCT IN ACCORDANCE WITH PERMIT AND MESA COUNTY STANDARDS AND SPECIFICATIONS.



NOT AS-BUILT

6/16/99

DRAWN BY: SGS	REVIEWED: DATE _____ FOR _____
DESIGNED BY: PMO	REVIEWED: DATE _____ FOR BANNER ASSOCIATES, INC.
CHECKED BY: PMO	

AMERICAN CONSULTING ENGINEERS COUNCIL OF COLORADO

**BANNER**

BANNER ASSOCIATES, INC. • CONSULTING ENGINEERS & SURVEYORS  
2777 CROSSROADS BOULEVARD • GRAND JUNCTION, CO 81506 • (970) 243-2242

REVISION	DATE	DESCRIPTION	BY	CH'D

BOB WITHAM - TWO RIVERS WINERY

GRAND JUNCTION, CO

CHATEAU DEUX FLEUVES SEWER PLAN

SCALE: 1" = 50'

JOB NO: 8377

DATE: 6/2/99

SHEET NO: 1 OF 1