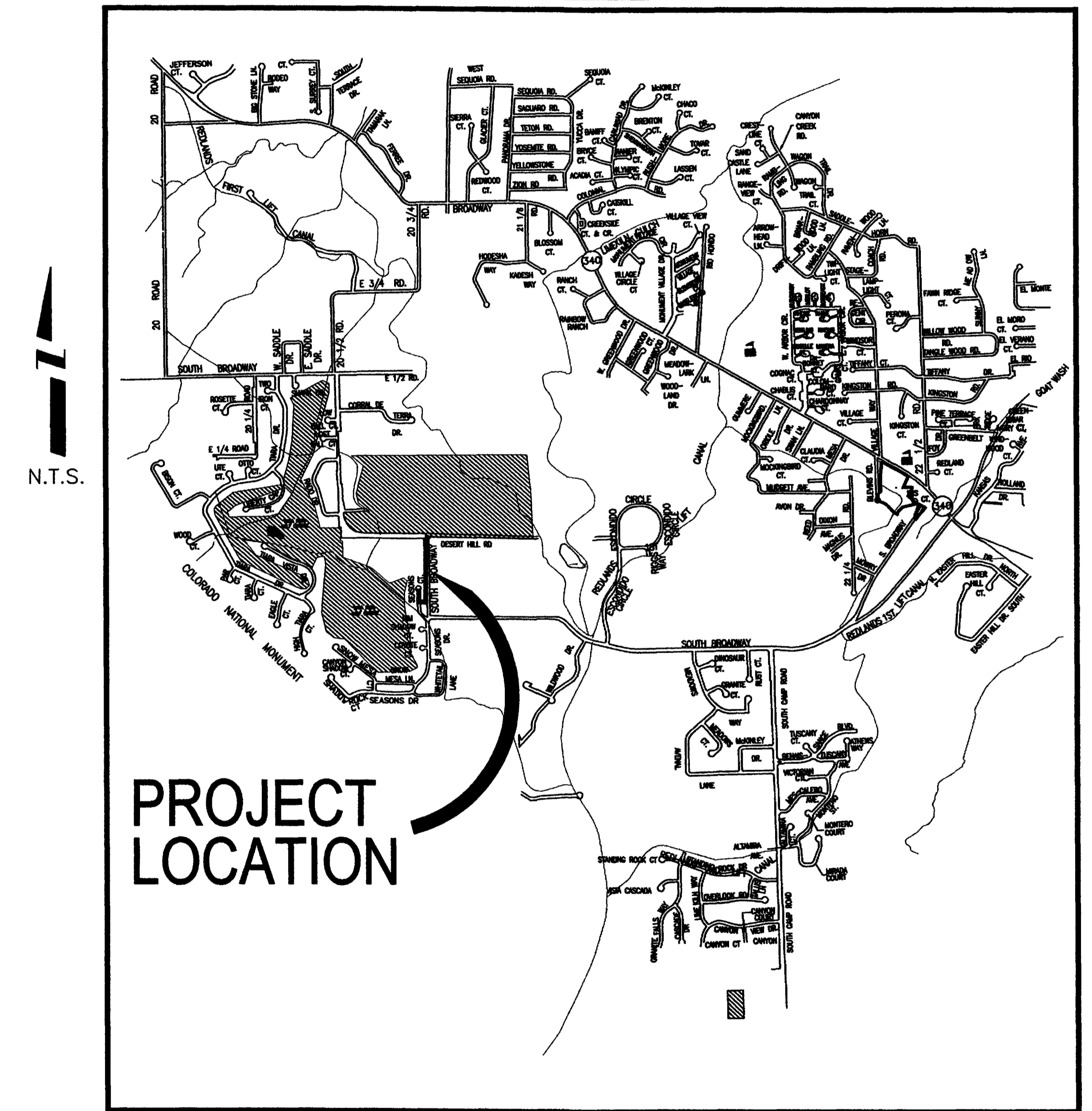


SEASONS OUTFALL SEWER MARCH, 2002

- 1 Cover Sheet
- 2 Standard Abbreviations, Legend,
and Symbols
- 3 Summary of Approximate Quantities
- 4 - 6 Plan & Profile

VICINITY MAP



*Department of Public Works & Utilities
Engineering and Technical Services Divisions
City of Grand Junction, Colorado*

DRAWING STATUS:	
○	PROGRESS
○	BID SET
○	FINAL CONSTRUCTION DRAWINGS
●	ASBUILT
APPROVED FOR CONSTRUCTION	
CITY OF GRAND JUNCTION	DATE
ACCEPTED AS CONSTRUCTED	
CITY OF GRAND JUNCTION	DATE

Item No.	CDOT, City Ref.	Description	Quantity	Units
1	201	Clearing and grubbing	Lump	Sum
2	202	Remove manhole at STA. 0+74.7, including credit for salvaged materials	Lump	Sum
3	202	Remove portion of manhole at STA. 14+20, including filling of manhole and credit for salvaged materials	Lump	Sum
4	202	Remove lift station and island	Lump	Sum
5	202	Remove concrete	8.	Sq Yd
6	202	Remove asphalt	380.	Sq Yd
7	203	Rock excavation	50.	Cu Yd
8	210	Reset storm drain pipe	70.	Lin Ft
9	401	Asphalt patch - 3" hot bituminous pavement (Grading C, 50-blow Marshal), 8" aggregate base course (Class 6)	380.	Sq Yd
10	401	Asphalt patch - 5" hot bituminous pavement (Grading C, 75-blow Marshal), 9" aggregate base course (Class 6)	35.	Sq Yd
11	608	Concrete curb and gutter (2' wide)	35.	Lin Ft

Item No.	CDOT, City Ref.
13	625
14	629
15	630
16	630
17	GJ 108.2
18	GJ 108.2
19	GJ 108.3
20	GJ 108.5
21	GJ 108.5
22	GJ 108.5
23	GJ 108.6

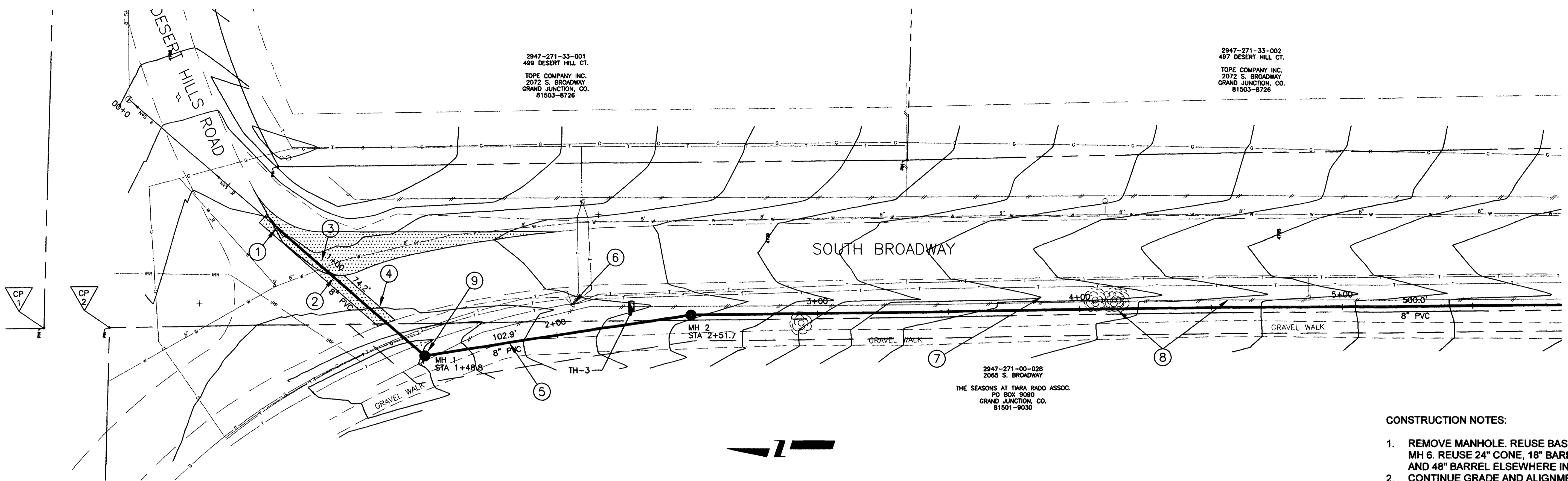
N:\Cadd\projects\TKH\SEASONS\dwg\SEASONS SAN.dwg 10/15/2002 01:31:58 PM MDT

REVISION Δ _____	DESCRIPTION _____	DATE _____	DRAWN BY _____	DATE _____
REVISION Δ _____	DESIGNED BY TKH	DATE 3/02	CHECKED BY _____	DATE _____
REVISION Δ _____	APPROVED BY _____	DATE _____	SCALE PLAN: 1"=20' PROFILE: 1"=20' HORIZ. 1"=20' VERT. 1"=2'	

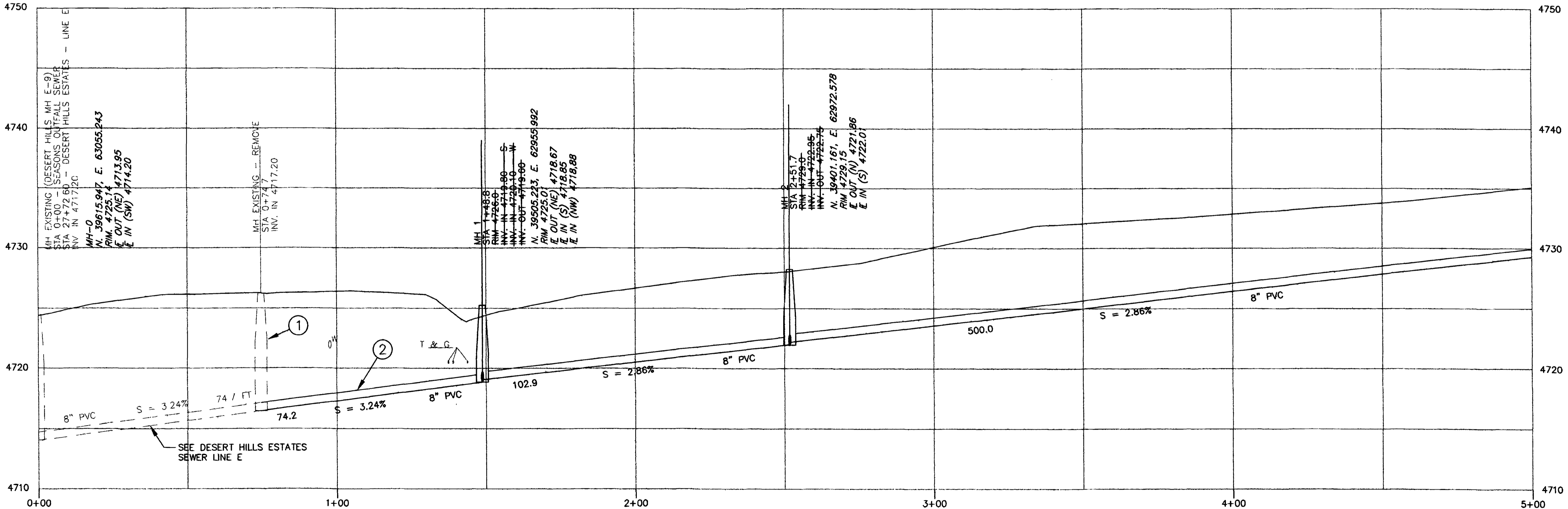
DEPARTMENT OF PUBLIC WORKS AND UTILITIES
ENGINEERING AND TECHNICAL SERVICES DIVISIONS
CITY OF GRAND JUNCTION, COLORADO

SEASONS OUTFALL SEWER
QUANTITY SHEET

3
OF
6



- CONSTRUCTION NOTES:**
1. REMOVE MANHOLE. REUSE BASE AT MH 6. REUSE 24" CONE, 18" BARREL AND 48" BARREL ELSEWHERE IN PROJECT.
 2. CONTINUE GRADE AND ALIGNMENT OF EXISTING LINE.
 3. RESTORE SHOULDER GRAVEL, INCIDENTAL.
 4. REMOVE AND REPLACE ASPHALT - 5" H.B.P., 9" A.B.C., MAX. PAY WIDTH = 6'.
 5. RESTORE GRAVEL PATH, INCIDENTAL.
 6. PROTECT OR RESET TELEPHONE PEDESTAL, INCIDENTAL.
 7. RE-ESTABLISH DITCH.
 8. CLEARING AND GRUBBING - REMOVE TREES AND FENCE.
 9. CONSTRUCT MH 1 WITH INVERT AND PLUGGED KNOCK-OUT FOR FUTURE LINE TO THE WEST. ORIENT 98° CLOCKWISE FROM SOUTH LINE IN.



	NORTHING	EASTING
MH-1	39,503.6	62,957.7
MH-2	39,401.9	62,973.5
MH-3	38,902.0	62,980.2
MH-4	38,623.0	62,984.0
MH-5	38,623.3	62,832.3
MH-6	38,865.0	62,830.2
CP-1	39,648.96	62,968.37
CP-2	36,623.93	62,968.48
CP-3	38,982.58	62,977.12

AS CONSTRUCTED

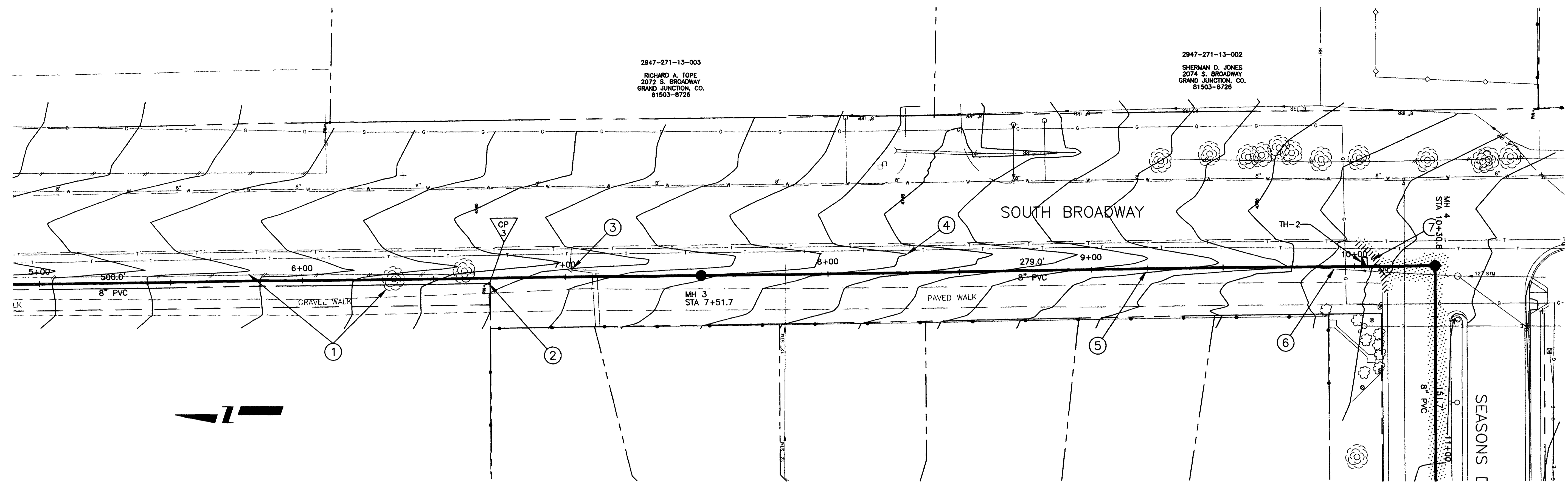
REVISION	DESCRIPTION	DATE
REVISION Δ		
REVISION Δ		
REVISION Δ		
REVISION Δ		

DRAWN BY	DATE
DESIGNED BY TKH	DATE 3/02
CHECKED BY	DATE
APPROVED BY	DATE

SCALE	
PLAN	PROFILE
HORIZ. 1"=20'	HORIZ. 1"=20'
	VERT. 1"=2'

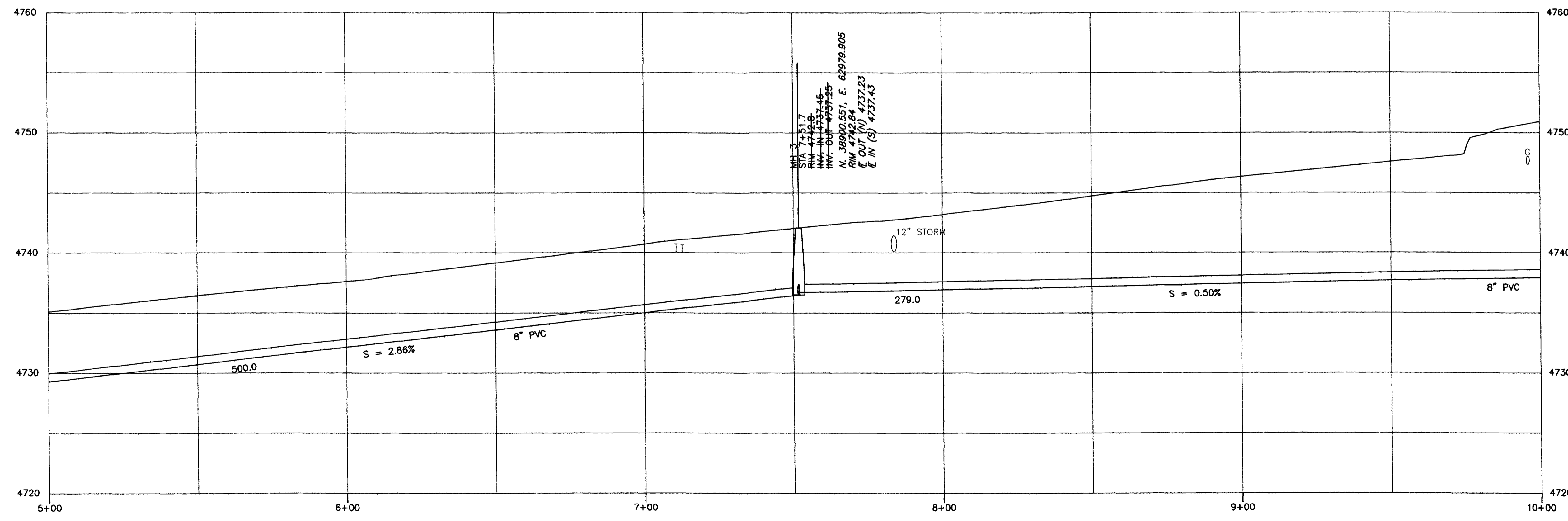
DEPARTMENT OF PUBLIC WORKS AND UTILITIES
ENGINEERING AND TECHNICAL SERVICES DIVISIONS
CITY OF GRAND JUNCTION, COLORADO

SEASONS OUTFALL SEWER
0+00 to 5+00
PLAN & PROFILE



2947-271-13-003
RICHARD A. TOPE
2072 S. BROADWAY
GRAND JUNCTION, CO.
81503-8726

2947-271-13-002
SHERMAN D. JONES
2074 S. BROADWAY
GRAND JUNCTION, CO.
81503-8726

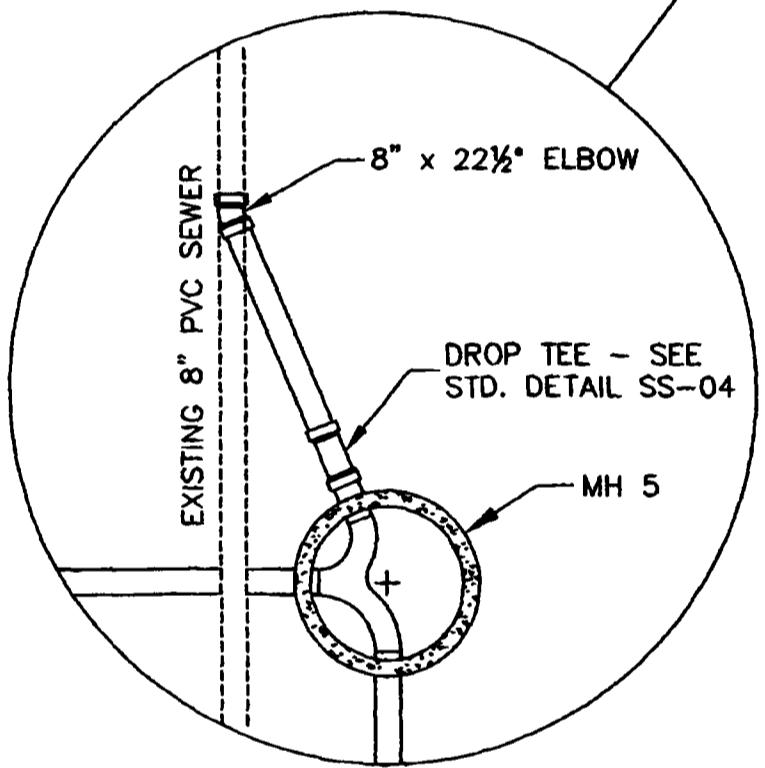
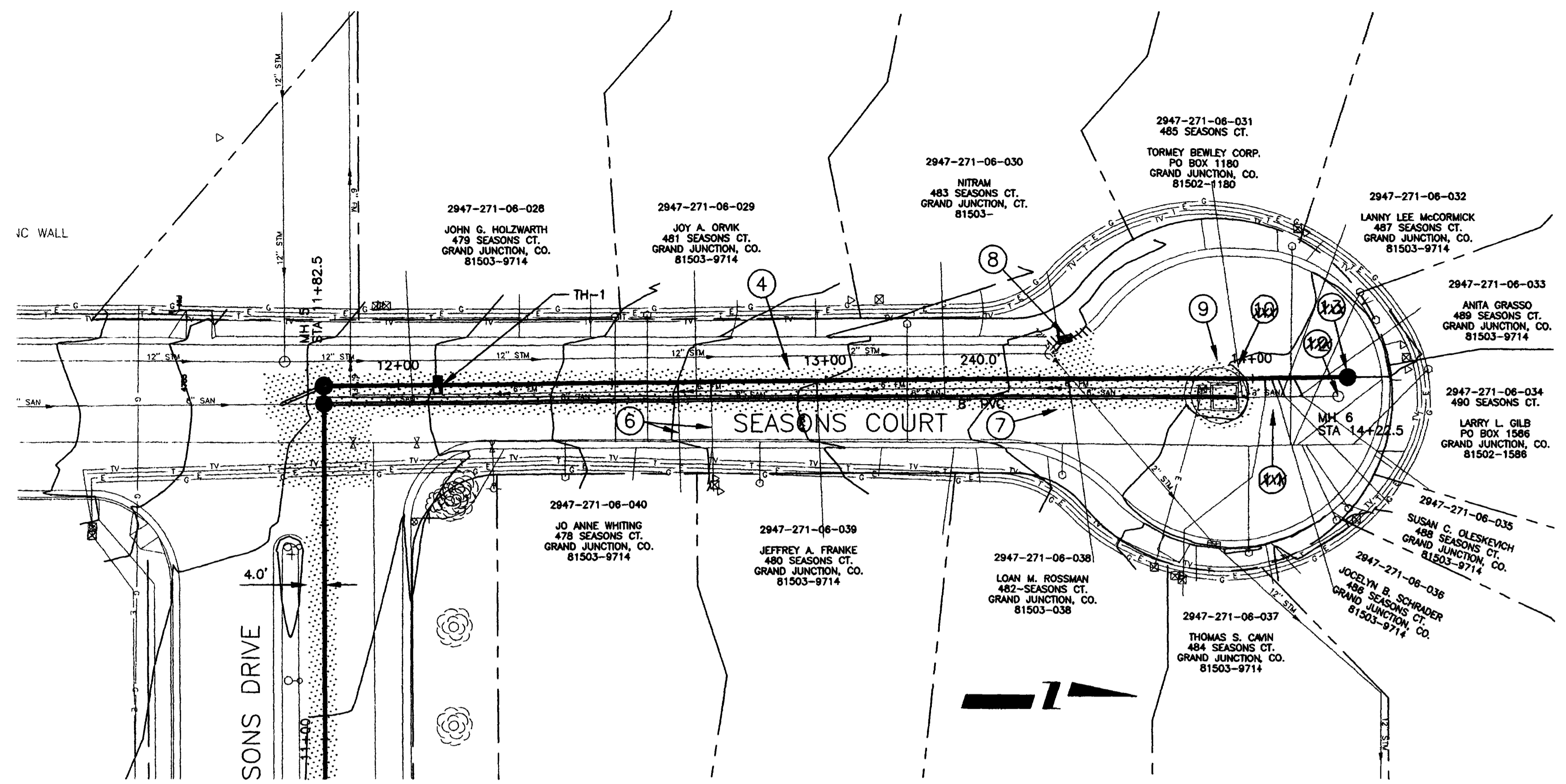
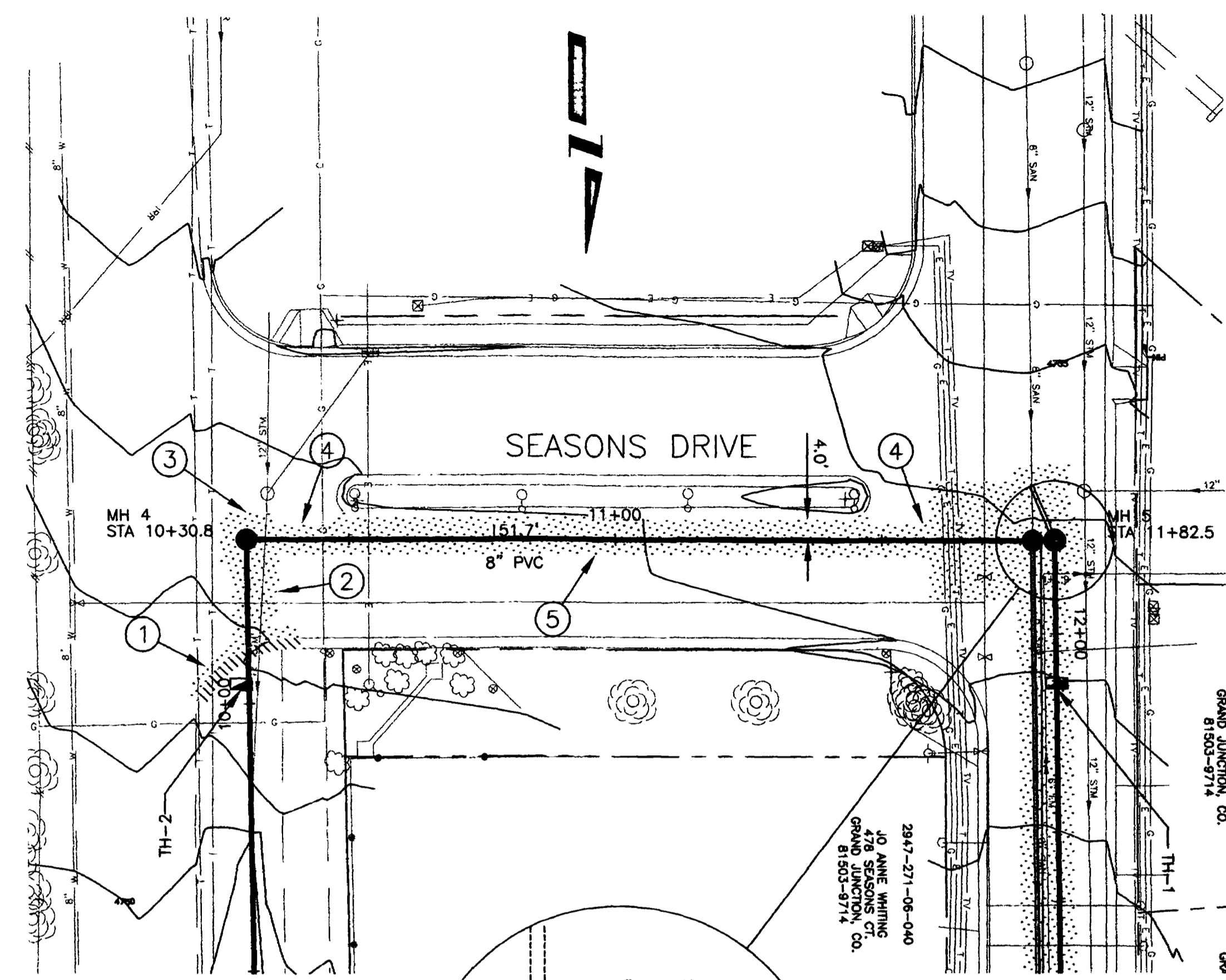


- CONSTRUCTION NOTES:**
1. CLEARING AND GRUBBING - REMOVE TREES AND FENCE.
 2. RESET PROPERTY PIN.
 3. PROTECT OR RESET TELEPHONE PEDESTAL, INCIDENTAL.
 4. RE-ESTABLISH DITCH.
 5. RESET SIGNS, INCIDENTAL.
 6. RESET 12" STORM DRAIN.
 7. INSTALL CONCRETE JOINT BETWEEN BACK OF CURB AND THE CONCRETE COLLAR ON THE MANHOLE RING.

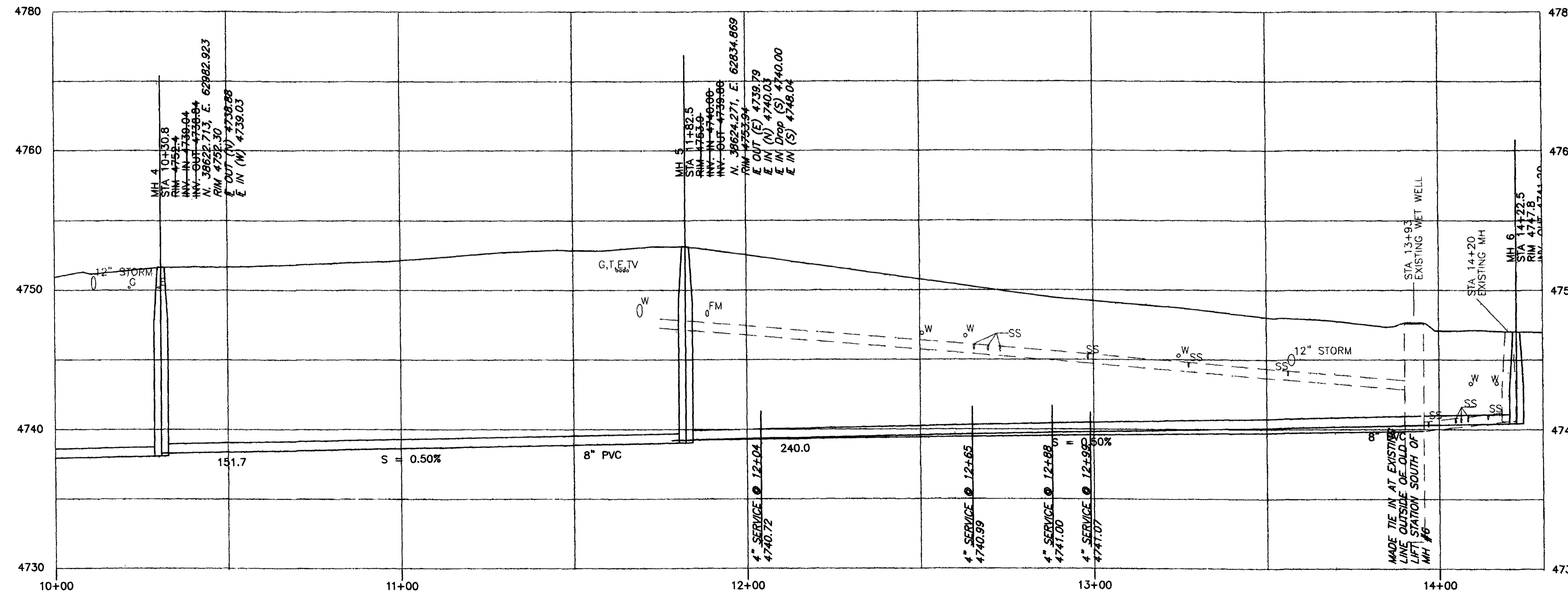
REVISION	DESCRIPTION	DATE	DRAWN BY	DATE
REVISION A			TKH	3/02
REVISION B				
REVISION C				
REVISION D				

DEPARTMENT OF PUBLIC WORKS AND UTILITIES
ENGINEERING AND TECHNICAL SERVICES DIVISIONS
CITY OF GRAND JUNCTION, COLORADO

SEASONS OUTFALL SEWER
5+00 TO 10+00
PLAN & PROFILE



- CONSTRUCTION NOTES:**
- REMOVE AND REPLACE 2' CURB AND GUTTER FROM END AT SOUTH BROADWAY TO EXISTING JOINT. REMOVE AND REPLACE ADJACENT PAVEMENT, 2' WIDE.
 - REMOVE AND REPLACE ASPHALT. 3" H.B.P., 8" A.B.C., MAX. PAY WIDTH TO 3' EAST OF NEW SEWER LINE AND 3' WEST OF STORM DRAIN.
 - REMOVE AND REPLACE ASPHALT. 3" H.B.P., 8" A.B.C., 10' x 10' MAX. PAY AREA AT MANHOLES.
 - REMOVE AND REPLACE ASPHALT. 3" H.B.P., 8" A.B.C., MAX. PAY WIDTH = 6'.
 - REMOVE AND REPLACE ASPHALT TO LIP OF GUTTER. 3" H.B.P., 8" A.B.C., MAX. PAY WIDTH = 7'.
 - TV INSPECTION REVEALS TWO SERVICE WYES. THE CONTRACTOR SHALL DETERMINE IF ONE OF THEM IS NOT ACTIVE AND, IF SO, NOT RECONNECT IT.
 - 4' X 6' ADDITIONAL ASPHALT REMOVAL AND REPLACEMENT AT SEWER SERVICE CONNECTIONS ON EAST SIDE OF STREET.
 - INSTALL STORM DRAIN INLET. CONNECT TO MANHOLE. SEE STD. DETAIL D-06. REPLACE CURB AND GUTTER TO EXISTING JOINTS. RESTORE ADJACENT LANDSCAPING.
 - LIFT STATION AND ISLAND REMOVAL - SEE SPECIAL PROVISIONS.
 - CONNECT SEWER SERVICES TO THE NEW LINE AFTER THE NEW LINE HAS BEEN TESTED. PROVIDE TEMPORARY INVERTED SIPHON (OR OTHER PROVISIONS) ON EXISTING SERVICES WHERE NEW LINE CONFLICTS.
 - NORTH OF LIFT STATION, REMOVE AND REPLACE ASPHALT BETWEEN 3' EAST OF EXISTING LINE AND 3' WEST OF NEW LINE. 3" H.B.P., 8" A.B.C.
 - REMOVE AND REUSE RING AND COVER FROM EXISTING MANHOLE. PLUG OUTLET WITH CONCRETE. REMOVE CONE. FILL MANHOLE WITH PIT RUN.
 - REUSE MANHOLE BASE FROM MANHOLE AT DESERT HILLS ROAD.



REVISION	DESCRIPTION	DATE	DRAWN BY	DATE	SCALE
REVISION			DESIGNED BY	TKH	DATE 3/02
REVISION			CHECKED BY		DATE
REVISION			APPROVED BY		DATE

DEPARTMENT OF PUBLIC WORKS AND UTILITIES
ENGINEERING AND TECHNICAL SERVICES DIVISIONS
CITY OF GRAND JUNCTION, COLORADO

AS CONSTRUCTED
SEASONS OUTFALL SEWER
10+00 TO 14+30
PLAN & PROFILE