





**Independent Avenue Phase 1A (Sanitary Sewer)**  
 Bid Opening December 4, 2001 at 2:00 p.m.  
 City Auditorium, Grand Jct. City Hall

Item no.	Ref. no.	Contract Item	Quantity	Units	Unit Price	Extended Price
1	SP	Cured in Place Sanitary Sewer Pipe per Project Specifications. (12" Dia. Pipe)	256.40	LF		
2	SP	Cured in Place Sanitary Sewer Pipe per Project Specifications. (10" Dia. Pipe)	502.90	LF		
3	SP	Cured in Place Sanitary Sewer Pipe per Project Specifications. (8" Dia. Pipe)	643.68	LF		
4	102/103/104	12" SDR-35 PVC w/ native backfill. Includes granular bedding and haunching material and clay cut-off walls.	35.00	LF		
5	102/103/104	10" SDR-35 PVC w/ native backfill. Includes granular bedding and haunching material and clay cut-off walls.	45.00	LF		
6	102/103/104	8" SDR-35 PVC w/ native backfill. Includes granular bedding and haunching material and clay cut-off walls.	1,249.00	LF		
7	102/103/104	4" SDR-35 PVC Service Line w/ native backfill by conventional excavation. Includes granular bedding and haunching material.	634.00	LF		
8	102/103/104	4" SDR-35 PVC Service Line by boring in tree areas.	240.00	LF		
9	102/103/104	Sewer service tap, 8"x4" Full body wye, and 4" 45 degree bend	28.00	EA		
10	102/103/104	Hugo and Cynthia Ernst new Sanitary Sewer Service Tap. Includes an Insettable, 4" 45 degree bends, 4" SDR-35 PVC as needed, 4" PVC Glue Clay, Service end Manter, Service end Reference, and restoration of disturbance area.	1.00	LS		
11	102/103/104	Simpson Auto Sewer service tap diversion. Includes Removal and Plugging of existing Service as needed, 8"x4" Full body wye, 4" 45 degree bends, 4" SDR-35 PVC as needed, and Removal and Replacement of 2" Curb and Gutter (6 ft)	1.00	LS		
12	102/103/104	Rita L. Colter Sewer Service Lowering. Includes Removal of existing Service as needed, an Insettable, 4" 45 degree bend, 4" SDR-35 PVC as needed, 4" 1 1/4 degree bends, connection back to existing service, and 6" Cl. 160 Conduit.	1.00	LS		
13	102.11	48" Dia. Sanitary Sewer Manhole (3' depth) with temporary metal cover. Includes Existing Manhole Removal, 5 LF New 12" SDR-35 PVC, and a Connection from New Pipe to Existing with a Calder Coupling. (New Dead end MH on Independent Ave)	1.00	EA		
14	102.11	48" Dia. Sanitary Sewer Manhole (3' depth) (Standard MH) with temporary metal cover. Includes Existing Manhole Removal, Pipe Removal, New SDR-35 PVC, and Connections from New Pipe to Existing with Couplings as Needed for New MH Installation. (MH at Independent and Bass, MH where Sewer turns South as D.O.W., MH A-5)	3.00	EA		
15	102.11	48" Dia. Sanitary Sewer Manhole (3' depth) (MH w/ 4" Drop Connection) with temporary metal cover. Includes Existing Manhole Removal, 5 LF 4" Pipe Removal, existing to new 4" pipe connection with Coupling as Needed for New MH Installation. (MH A-2)	1.00	EA		
16	102.11	48" Dia. Sanitary Sewer Manhole (3' depth) (Standard MH) with temporary metal cover. Includes Existing Manhole Removal. (MH A-3)	1.00	EA		

17	102.11	48" Dia. Sanitary Sewer Manhole (3' depth) (Standard MH) with Ring and Cover set to grade with Grade Rings as Necessary. Includes Existing Manhole Removal. (new MH on Bass St. and MH A-4)	2.00	EA		
18	102.11	48" Dia. Sanitary Sewer Manhole (3' depth) with temporary metal cover. Includes Pipe Removal, New SDR-35 PVC, and Connections from New Pipe to Existing with Couplings as Needed for New MH Installation. (25 1/2 Rd.)	1.00	EA		
19	102.11	48" Dia. Sanitary Sewer Manhole w/Ring and Cover (3' depth) Includes Pipe Removal, New SDR-35 PVC, and Connections from New Pipe to Existing with Couplings as Needed for New MH Installation. (MH at DOW line connection)	1.00	EA		
20	102.11	48" Dia. Sanitary Sewer Manhole w/Ring and Cover set to grade with Grade Rings as Necessary (3' depth) (Standard MH) Includes Existing Manhole Removal, Pipe Removal, New SDR-35 PVC, and Connections from New Pipe to Existing with Couplings as Needed for New MH Installation. (MH at Independent Ave and Motor St.)	1.00	EA		
21	102/103/104	Connect to existing manhole includes removal of existing pipe into Manhole, coring and jackhammering of existing manhole base as needed, regrading invert for new connection, and utilization of PSX boot for new tie in. (at MH A-1 and MH at 25 1/2 Road and Independent Ave)	2.00	EA		
22	102/103/104	Connect to existing sewer service line. Includes a 4" x 4" full body wye, a 4" glue cap, 4" SDR-35 PVC as needed, 4" 45 degree bend, a mission type coupling, a vertical reference to the glue capped end, and a horizontal reference performed by a licensed surveyor. See detail in construction drawings.	28.00	EA		
23	103.15	Granular stabilization material for subgrade (includes overexcavation & disposal)	400.00	Ton		
24	103.16	Import pit run backfill material. Includes excavation, haul, and disposal of unsuitable native material.	1,000.00	Ton		
25	104.00	Extra depth for 4" Dia. Std. Manhole	36.11	LF		
26	104.00	Extra depth for 4" Dia. Std. Drop Manhole	3.44	LF		
27	202.00	Remove existing 6-12" Sanitary, Storm, or Water Pipe.	1,498.00	LF		
28	202.00	Remove existing 2-4" Sanitary, Storm, or Water Pipe.	891.00	LF		
29	202.00	Abandon Existing Piping by Plugging End with Concrete	38.00	EA		
30	202/401	Remove existing asphalt. Place and Compact 6" ABC class 6 within limits of trench area as a temporary surface treatment until Phase II construction.	1,594.29	SY		
31	202/401	Remove existing concrete. Includes sawcutting as needed. Place and Compact 6" ABC class 6 within limits of trench area as a temporary surface treatment until Phase II construction.	47.64	SY		
32	202.00	Remove Existing Bush	2.00	EA		
33	202.00	Remove Existing Chain Link Fence, Salvage, and return to Property Owner.	16.00	LF		

Item no.	Ref. no.	Contract Item	Quantity	Units	Unit Price	Extended Price
34	202.00	Remove Existing Wood Picket Fence, Salvage, and return to Property Owner.	8.00	LF		
35	202.00	Remove Existing Wood Split Rail (2 rail) fence, Salvage, and return to Property Owner.	8.00	LF		
36	607.00	Temporary Plastic (Tensar) fence	32.00	LF		
37	202.00	Remove Existing Manhole, Plug end of Pipes Entering and Leaving MH, Backfill Void with pitrun.	1.00	EA		
38	202.00	Remove Existing Rock Border, Salvage, and return to Property Owner.	8.00	LF		
39	202.00	Trim and Remove Hodge as needed to construct sewer.	2.00	EA		
40	202.00	Remove Bush	1.00	EA		
41	202.00	Remove Tree Stump	1.00	EA		
42	202.00	Remove Tree	2.00	EA		
43	202.00	Remove Existing Blind Bath, Salvage, and return to Property Owner.	1.00	EA		
44	210.00	Reset Existing Mailbox to a temporary location	5.00	EA		
45	304.00	4" depth Class 6 ABC for driveway/shoulder restoration.	104.21	SY		
46	629.05	Referencing and Recording Existing Property Corner Location by a Surveyor Licensed in the State of Colorado.	1.00	EA		
47		Minor Contract Revisions	1.00	LS	\$4,000.00	\$4,000.00

**SUBTOTAL (TOTAL BID PRICE FOR SANITARY SEWER)**

**Independent Avenue Phase 1A (City Water Line)**  
 Bid Opening December 4, 2001 at 2:00 p.m.  
 City Auditorium, Grand Jct. City Hall

Item no.	Ref. no.	Contract Item	Quantity	Units	Unit Price	Extended Price
1	102.7b	8" x 11 1/4 degree Bend and Thrust Restraint	4.00	EA		
2	102.7b	8" x 45 degree Bend and Thrust Restraint	6.00	EA		
3	102.7b	8" x 8" Tee and Thrust Restraint	1.00	EA		
4	102.7b	8" x 6" Tee and Thrust Restraint	3.00	EA		
5	102.7b	8" Temporary Plug and Thrust Restraint. Includes Removal prior to New to Existing connection.	3.00	EA		
6	102/103/104	8" PVC Pipe (C-900) with Native Backfill. Includes granular bedding and haunching material.	859.27	LF		
7	102/103/104	6" PVC Pipe (C-900) with Native Backfill. Includes granular bedding and haunching material.	40.14	LF		
8	102.8a	6" Fire Hydrant Assembly and Thrust Restraint	3.00	EA		
9	102.8b	8" Gate Valve and Thrust Restraint.	3.00	EA		
10	102.8b	6" Gate Valve and Thrust Restraint.	3.00	EA		
11	102.80	Install Tapping Saddle, Corporation Stop, 95 LF 1" type K copper service line, 4" Schedule 40 Conduit beneath and behind walk and wall, 1" Water Meter/Pig/Yoke (supplied by City), and Connect back to existing Service Line with a compression coupling. Includes removal of existing tapping saddle, corporation stop, water meter, etc., to point of new service line connection	1.00	EA		
12	102.80	Install Tapping Saddle, Corporation Stop, 64 LF 1" type K copper service line, 1" Water Meter/Pig/Yoke (supplied by City), and a 1" Cap at end of New Service Line.	1.00	EA		
13	102.80	Install Tapping Saddle, Corporation Stop, 6 LF 1" type K copper service line (plus or minus), and Connect back to existing Service Line with a compression coupling.	3.00	EA		
14	104.40	Cap Existing Sewer Main with Concrete per Construction Drawings	20.00	LF		
15	102/103/104	Connect New 8" PVC Water Line to Existing 8" PVC Water Line	3.00	EA		
16	102/103/104	Connect New 8" PVC Water Line to Existing 8" Valve	1.00	EA		
17	202.00	Remove Existing Water Valve and Return to City Shops.	7.00	EA		
18	202.00	Remove Existing Abandoned Water Meter and plug contributing lines	1.00	EA		
19	202.00	Remove Existing Tapping Saddle, Corporation Stop, and approximately 6 LF Service line	1.00	EA		
20	202.00	Remove existing 8" Water Line	790.50	LF		
21	202.00	Remove existing 12"-18" Irrigation Pipe/culvert.	40.00	LF		
22	202.00	Abandon Existing Piping by Plugging End with Concrete	12.00	EA		
23	202.00	Remove Ground Sign and Post and Return to Traffic Department at City Shops.	1.00	EA		
24	202.00	Remove Bush	1.00	EA		
25	202.00	Remove Existing Fence.	8.00	LF		
26	202/304	Remove existing asphalt. Place and Compact 6" ABC class 6 within limits of trench area as a temporary surface treatment until Phase II construction.	791.59	SY		
27		Minor Contract Revisions	1.00	LS	\$1,000.00	\$1,000.00

**SUBTOTAL (TOTAL BID PRICE FOR CITY WATER LINE)**

**Independent Avenue Phase 1A (Use Water Line)**  
 Bid Opening December 4, 2001 at 2:00 p.m.  
 City Auditorium, Grand Jct. City Hall

Item no.	Ref. no.	Contract Item	Quantity	Units	Unit Price	Extended Price
1	102/103/104	Connect New 6" PVC Water Line to Existing 6" AC Water Line. Includes 6" AC to PVC Transition Coupling.	2.00	EA		
2	102.7b	8" x 8" Tee and Thrust Restraint	1.00	EA		
3	102.7b	8" x 45 degree Bend and Thrust Restraint	4.00	EA		
4	102.7b	8" x 6" Concentric Reducer	2.00	EA		
5	102.7b	6" x 45 degree Bend and Thrust Restraint	4.00	EA		
6	102/103/104	8" PVC Pipe (C-900) with Native Backfill. Includes granular bedding and haunching material	227.60	LF		
7	102/103/104	6" PVC Pipe (C-900) with Native Backfill. Includes granular bedding and haunching material.	18.67	LF		
8	102.8b	8" Gate Valve and Thrust Restraint.	2.00	EA		
9	104.40	Excise Existing 30" Sewer Main with Concrete per Construction Drawings	20.00	LF		
10	104.40	Cap Existing Sewer Main with Concrete per Construction Drawings	20.00	LF		
11	202.00	Remove Existing Water Valve and Return to City Shops.	2.00	EA		
12	202.00	Remove Ground Sign and Post and Return to Traffic Department at City Shops.	1.00	EA		
13	202.00	Remove existing 18" Irrigation Pipe.	20.00	LF		
14	202.00	Abandon Existing Piping by Plugging End with Concrete	6.00	EA		
15	202/401	Remove existing asphalt. Includes jackhammering or wheelcutting as needed. Place and Compact 6" ABC class 6 within limits of trench area as a temporary surface treatment until Phase II construction.	209.52	SY		
16		Minor Contract Revisions	1.00	LS	\$300.00	\$300.00

**SUBTOTAL (TOTAL BID PRICE FOR USE WATER LINE)**

**Independent Avenue Phase 1A**  
 Bid Opening December 4, 2001 at 2:00 p.m.  
 City Auditorium, Grand Jct. City Hall

Item no.	Ref. no.	Contract Item	Quantity	Units	Unit Price	Extended Price
1	209.05	Dust Palliative	67.00	Day		
2	620.00	Sanitary Facility	1.00	LS		
3	625.00	Construction Surveying including as-built plans	1.00	LS		
4	626.00	Mobilization	1.00	LS		
5	630.00	Traffic Control				
6		Traffic Control (complete in place includes TCS)	1.00	LS		
7		Flagger	256.00	Hour		
8		Traffic Control Plan	1.00	LS		
9		Newsletter (approximately 123 per week) GCC Sect. 56	10.00	WK		

**SUBTOTAL (TOTAL BID PRICE FOR COMMON ITEMS)**

**BID SUMMARY**

**SUBTOTAL (TOTAL BID PRICE FOR SANITARY SEWER LINE)**

**SUBTOTAL (TOTAL BID PRICE FOR CITY WATER LINE)**

**SUBTOTAL (TOTAL BID PRICE FOR USE WATER LINE)**

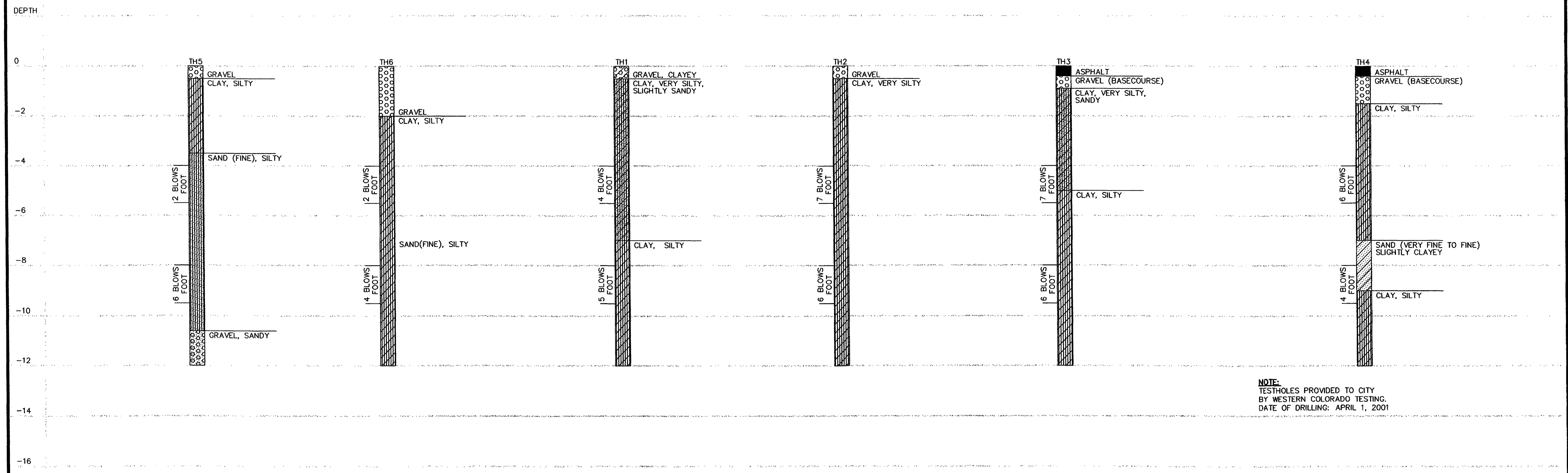
**SUBTOTAL (TOTAL BID PRICE FOR COMMON ITEMS)**

**TOTAL BID PRICE FOR UTILITY IMPROVEMENTS PHASE 1A**

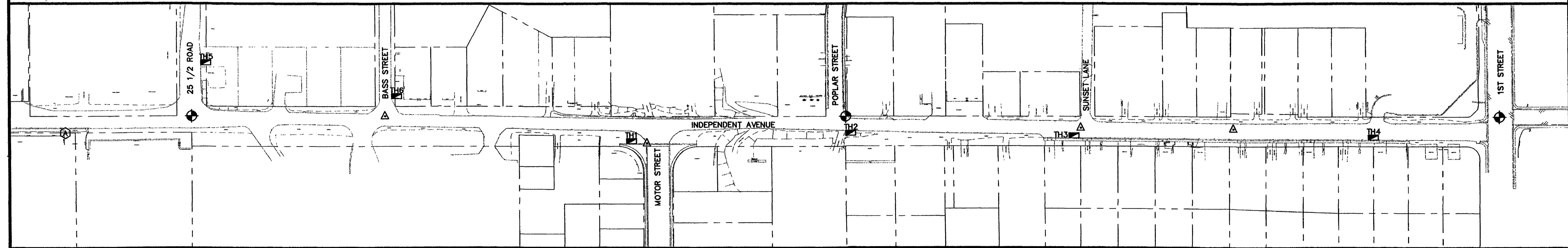
REVISION $\Delta$	DESCRIPTION	DATE	DRAWN BY JCS	DATE 2001	SCALE
REVISION $\Delta$			DESIGNED BY JCS	DATE 2001	PLAN PROFILE
REVISION $\Delta$			CHECKED BY MC	DATE 2001	HORIZ. VERT.
REVISION $\Delta$			APPROVED BY	DATE	

**DEPARTMENT OF PUBLIC WORKS AND UTILITIES**  
**ENGINEERING AND TECHNICAL SERVICES DIVISIONS**  
**CITY OF GRAND JUNCTION, COLORADO**

**INDEPENDENT AVENUE - PHASE 1A**  
**SUMMARY OF APPROXIMATE QUANTITIES**



NOTE:  
TESTHOLES PROVIDED TO CITY  
BY WESTERN COLORADO TESTING.  
DATE OF DRILLING: APRIL 1, 2001



<p>⊕ TBM N 40754.50 E 86554.56 EL 4555.73 PK NAIL SET IN PAVEMENT 3' SOUTH OF EXISTING BACK OF WALK AT WEST SIDE OF DRIVE</p>	<p>⊕ MCSM N 40788.07 E 86810.52 EL 4558.67 MCSM C-S 16TH COR. SEC 10 T 1 S, R 1 W, U.M.</p>	<p>△ TEMPORARY CONTROL N 40787.99 E 87200.23 EL 4556.44 HINGE NAIL SET AT THE INTERSECTION OF BASS AND INDEPENDENT AVENUE</p>	<p>△ TEMPORARY CONTROL N 40733.72 E 87728.06 EL 4563.99 HINGE NAIL SET AT THE INTERSECTION OF MOTOR ST AND INDEPENDENT AVENUE</p>	<p>⊕ MCSM N 40787.61 E 88129.36 EL 4589.22 MCSM SE 16TH COR. SEC 10 T 1 S, R 1 W, U.M.</p>	<p>△ TEMPORARY CONTROL N 40784.20 E 88602.29 EL 4589.29 HINGE NAIL SET AT THE INTERSECTION OF SUNSET AND INDEPENDENT AVENUE</p>	<p>△ TEMPORARY CONTROL N 40786.83 E 88910.56 EL 4600.48 PK NAIL SET 21.5' NW OF THE EDGE OF PAVEMENT AT THE NW CORNER OF DRIVE TO 225 INDEPENDENT AVE</p>	<p>⊕ MCSM N 40786.21 E 89449.11 EL 4603.97 MCSM SOUTH 16TH COR. SEC 10/ SEC 11, T 1 S, R 1 W, U.M.</p>
---	---	---	---	--	---	---	--

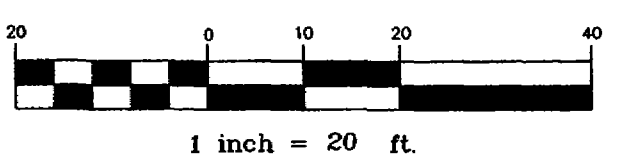
REVISION Δ	DESCRIPTION	DATE	DRAWN BY JCS	DATE 2001	SCALE
REVISION Δ			DESIGNED BY JCS	DATE 2001	PLAN 1"=100'
REVISION Δ			CHECKED BY MC	DATE 2001	TESTHOLES HORIZ. NONE
			APPROVED BY	DATE	VERT. 1"=2'

DEPARTMENT OF PUBLIC WORKS AND UTILITIES  
ENGINEERING AND TECHNICAL SERVICES DIVISIONS  
CITY OF GRAND JUNCTION, COLORADO

INDEPENDENT AVENUE  
CONTROL POINT AND TEST HOLE DATA



- PROGRESS
- BID SET
- FINAL CONSTRUCTION DRAWINGS

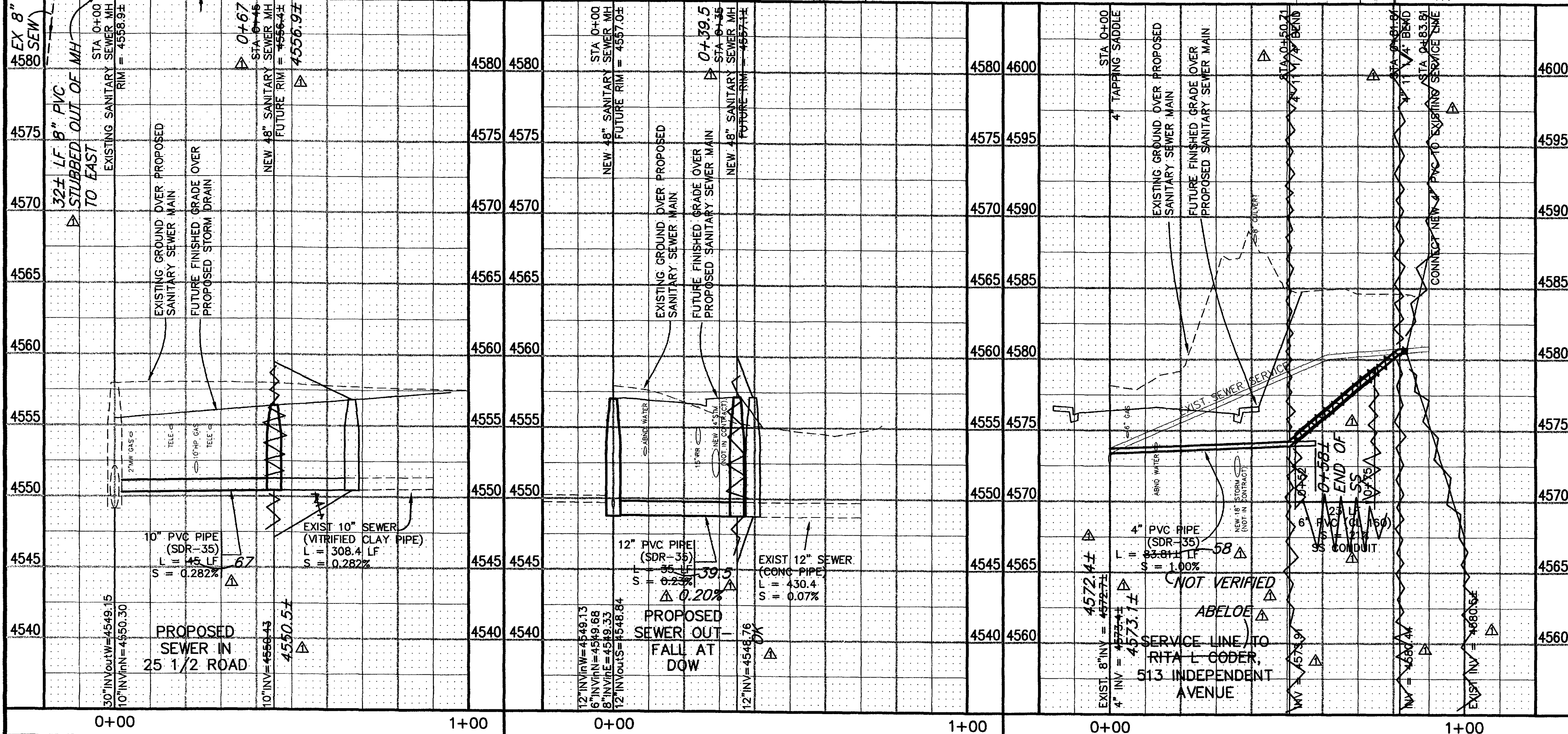
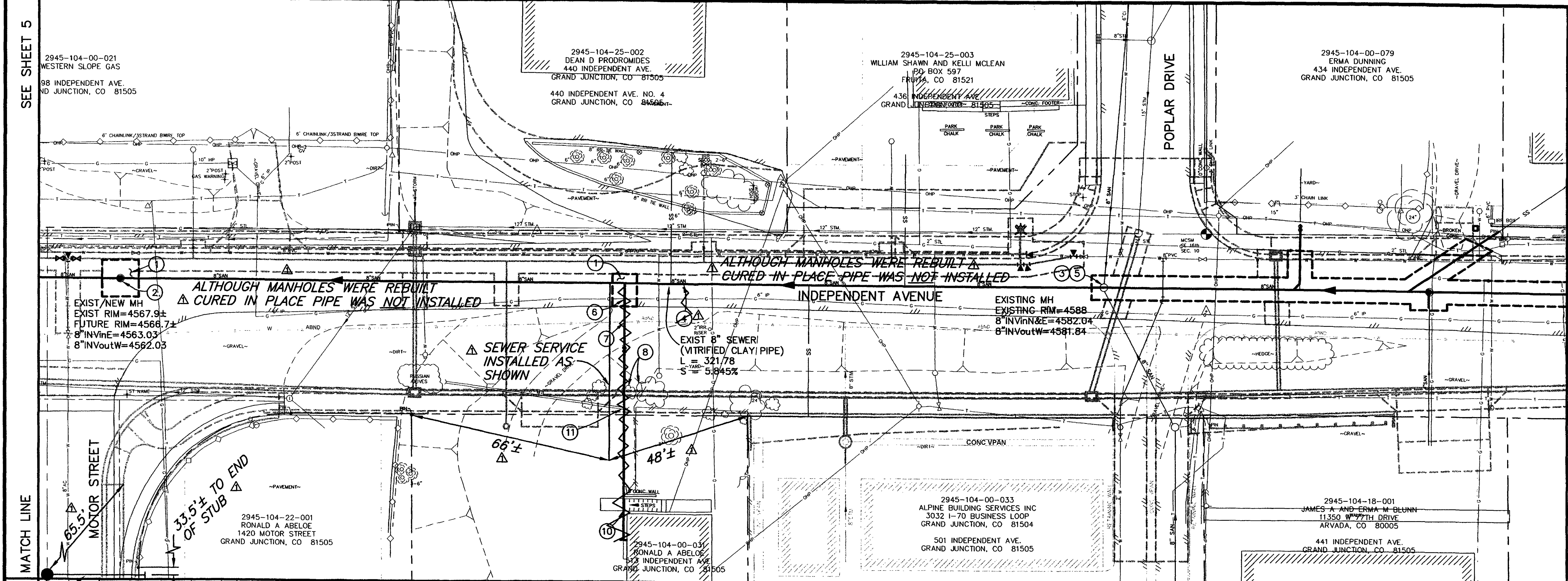


CONSTRUCTION NOTES

- 1 202.00 ASPHALT REMOVAL: CUT AND REMOVE PAVEMENT AS SHOWN. GENERALLY WIDTH TO INSTALL MANHOLES WILL BE 12' CENTERED ON THE MANHOLE AND SQUARED OFF AS SHOWN. FOR SERVICE LINES AND MAIN LINES REMOVAL WIDTH WILL BE 6' MINIMUM/8' MAXIMUM CENTERED ON THE PIPE.
- 304.00 AGGREGATE BASE COURSE (CL 6) (6" DEPTH) COMPACT BASE COURSE TO 95% AASHTO T-180. SUBGRADE SHALL BE COMPACTED TO 95% AASHTO T-99. (TEMPORARY SURFACE TREATMENT UNTIL ROADWAY RECONSTRUCTION - PHASE II)
- 2 DURING REMOVAL OF EXISTING MANHOLE AND NEW MANHOLE INSTALLATION IT WILL BE NECESSARY TO BYPASS PUMP SEWAGE AROUND WORK TO A DOWNSTREAM MANHOLE.
- 202.00 REMOVE THE EXISTING MANHOLE. REMOVE APPROXIMATELY 5 LF EXISTING SEWER PIPE FROM ALL INLETS AND OUTLETS OF EXISTING MANHOLE.
- 102/103/104 CONNECT APPROXIMATELY 5 LF PVC (SDR-35) TO ALL EXISTING INLET AND OUTLET SEWER PIPES WITH CALDER COUPLINGS AND ENCASE CONNECTIONS IN CONCRETE.
- 102.11 48" DIA. SANITARY SEWER MANHOLE. MANHOLE SHALL HAVE A PRECAST OR CAST IN PLACE BASE AT CONTRACTOR'S OPTION. (SEE CITY OF GRAND JUNCTION STANDARD DETAIL SS-02) POUR INVERT AFTER PIPE IS INSTALLED AND CUT TO FORM INVERT. SET TOP OF CONE SECTION 1' BELOW FUTURE RIM ELEVATION SHOWN ON PLANS, BRING RING AND COVER TO EXISTING RIM ELEVATION WITH GRADE RINGS AS NEEDED.

- 3 DURING CONNECTION OF NEW PIPE TO EXISTING MANHOLE AND NEW PIPE INSTALLATION IT WILL BE NECESSARY TO BYPASS PUMP SEWAGE AROUND WORK TO A DOWNSTREAM MANHOLE. CONNECT PROPOSED 8" PVC SEWER LINE IN ON THE EAST SIDE OF MANHOLE TO EXISTING MANHOLE. CONTRACTOR SHALL REMOVE EXISTING PIPE FROM MANHOLE (EAST SIDE ONLY). INSTALL NEW 8" PVC SEWER INTO EXISTING MANHOLE, AND GROUT ANNULAR SPACE TO PROVIDE A LEAK PROOF SEAL. ALL WORK SHALL BE PAID FOR UNDER BID ITEM CONNECT PROPOSED 8" PVC SEWER TO EXISTING MANHOLE. (SEE CITY OF GRAND JUNCTION STANDARD DETAIL SS-04)
- 102.11 CLAY CUT OFF WALL SHALL BE PLACED 10' UPSTREAM (EAST ONLY) OF EXIST. MH. CUT OFF WALL SHALL EXTEND FROM 6" BELOW TO 6" ABOVE IMPORTED BACKFILL MATERIAL FOR THE FULL WIDTH OF THE TRENCH. IF NATIVE MATERIAL IS NOT SUITABLE, THE CONTRACTOR SHALL IMPORT MATERIAL IN ACCORDANCE WITH SECTION 103.10 OF THE STANDARD CONTRACT DOCUMENTS.
- 10 202.00 REMOVE EXISTING SEWER SERVICE LINE FROM EXISTING 8" MAIN TO CONNECTION POINT TO EXISTING SERVICE (SEE PROFILE THIS SHEET)
- 102.90 SERVICE LINE CONNECTION TO THE EXISTING 8" CONCRETE WITH CURED IN PLACE LINING SHALL BE ACCOMPLISHED WITH AN INSERTATEE FITTING, 4" SDR 35 PVC PIPE, AND 11 1/4" BENDS. 4" SERVICE LINE SHALL BE LOWERED AND BROUGHT BACK TO THE GRADE OF THE EXISTING SERVICE LINE (SEE PROFILE OF SEWER SERVICE LINE WITH A COMBINATION OF 4" PIPE AND 11 1/4" BENDS. CONNECT NEW TO EXISTING PIPE WITH A CALDER COUPLING. ENCASE COUPLING IN CONCRETE. (SEE CITY OF GRAND JUNCTION STANDARD DETAIL SS-06)
- 11 202.00 REMOVE EXISTING CULVERT AS NEEDED TO INSTALL SEWER SERVICE.

- 4 102.9A CURED IN PLACE SANITARY SEWER PIPE PER PROJECT SPECIFICATIONS. PIPE LINER SHALL BE INSTALLED AFTER MANHOLE INSTALLATIONS AND CONNECTIONS.
- 5 CONVENTIONAL TRENCH TYPE INSTALLATION FROM THIS MANHOLE EAST. SEE SHEET 8 FOR DETAILS.
- 6 NOTIFY EXCEL ENERGY 48 HOURS PRIOR TO EXCAVATIONS THAT WILL EXPOSE GAS LINES.
- 7 202.00 CUT EXISTING ABANDONED WATER LINE CLOSE TO EDGE OF TRENCH. PLUG ENDS OF PIPES AT EITHER SIDE WITH CONCRETE PRIOR TO BACKFILLING.
- 8 202.00 REMOVE EXISTING BUSHES AS NEEDED TO LOWER EXISTING SEWER SERVICE.
- 9 NOT USED



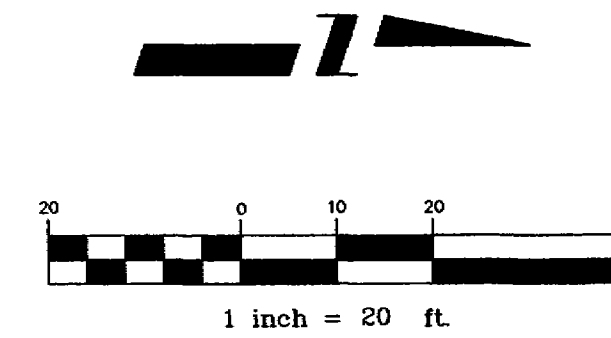
REVISION	DESCRIPTION	DATE	DRAWN BY	DATE	SCALE
1	ASBUILT	10-02	JCS	2001	PLAN 1"=20'
2			JCS	2001	PROFILE 1"=5'
3			MC	2001	
4					

**DEPARTMENT OF PUBLIC WORKS AND UTILITIES**  
**ENGINEERING AND TECHNICAL SERVICES DIVISIONS**  
**CITY OF GRAND JUNCTION, COLORADO**

**INDEPENDENT AVENUE**  
**SANITARY SEWER PLAN AND PROFILES**

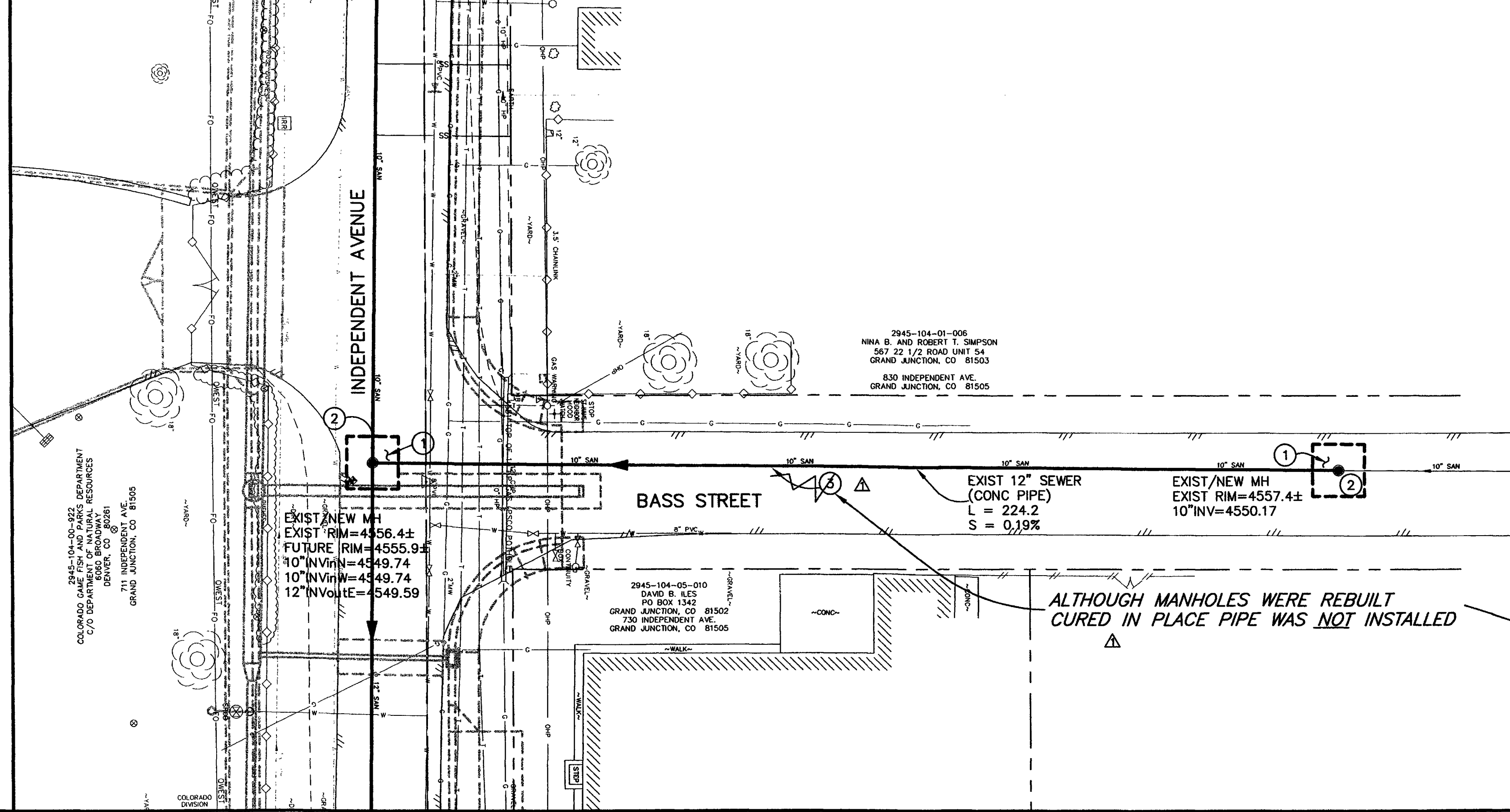
DRAWING STATUS:

- PROGRESS
- BID SET
- FINAL CONSTRUCTION DRAWINGS



CONSTRUCTION NOTES

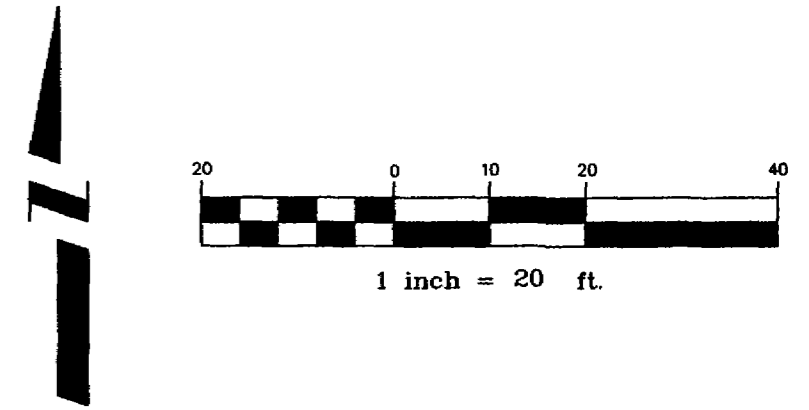
- ① 202.00 ASPHALT REMOVAL: CUT AND REMOVE PAVEMENT AS SHOWN. GENERALLY WIDTH TO INSTALL MANHOLES WILL BE 12' CENTERED ON THE MANHOLE AND SQUARED OFF AS SHOWN. FOR SERVICE LINES AND MAIN LINES REMOVAL WIDTH WILL BE 6' MINIMUM/8' MAXIMUM CENTERED ON THE PIPE.
- 304.00 AGGREGATE BASE COURSE (CL 6) (6" DEPTH) COMPACT BASE COURSE TO 95% AASHTO T-180. SUBGRADE SHALL BE COMPACTED TO 95% AASHTO T-99. (TEMPORARY SURFACE TREATMENT UNTIL ROADWAY RECONSTRUCTION - PHASE II)
- ② 202.00 DURING REMOVAL OF EXISTING MANHOLE AND NEW MANHOLE INSTALLATION IT WILL BE NECESSARY TO BYPASS PUMP SEWAGE AROUND WORK TO A DOWNSTREAM MANHOLE.
- 202.00 REMOVE THE EXISTING MANHOLE. REMOVE APPROXIMATELY 5 LF EXISTING SEWER PIPE FROM ALL INLETS AND OUTLETS OF EXISTING MANHOLE.
- 102/103/104 CONNECT APPROXIMATELY 5 LF PVC (SDR-35) TO ALL EXISTING INLET AND OUTLET SEWER PIPES WITH CALDER COUPLINGS AND ENCASE CONNECTIONS IN CONCRETE.
- 102.11 48" DIA. SANITARY SEWER MANHOLE. MANHOLE SHALL HAVE A PRECAST OR CAST IN PLACE BASE AT CONTRACTOR'S OPTION. (SEE CITY OF GRAND JUNCTION STANDARD DETAIL SS-02) POUR INVERT AFTER PIPE IS INSTALLED AND CUT TO FORM INVERT.
- SOUTH MANHOLE ONLY:  
SET TOP OF CONE SECTION 1' BELOW FUTURE RIM ELEVATION SHOWN ON PLANS, BRING RING AND COVER TO EXISTING RIM ELEVATION WITH GRADE RINGS AS NEEDED.
- NORTH MANHOLE WILL BE COMPLETE WITH RING AND COVER PER CITY STANDARD.
- ③ ~~T02.9A~~ CURED IN PLACE SANITARY SEWER PIPE PER PROJECT SPECIFICATIONS. PIPE LINER SHALL BE INSTALLED AFTER MANHOLE INSTALLATIONS AND CONNECTIONS.



REVISION	DESCRIPTION	DATE	DRAWN BY	DATE	SCALE
REVISION Δ	ASBUILT	10-02	JCS	2001	PLAN PROFILE
REVISION Δ			JCS	2001	HORIZ. 1"=20' HORIZ.
REVISION Δ			MC	2001	VERT.
REVISION Δ					

DEPARTMENT OF PUBLIC WORKS AND UTILITIES  
ENGINEERING AND TECHNICAL SERVICES DIVISIONS  
CITY OF GRAND JUNCTION, COLORADO

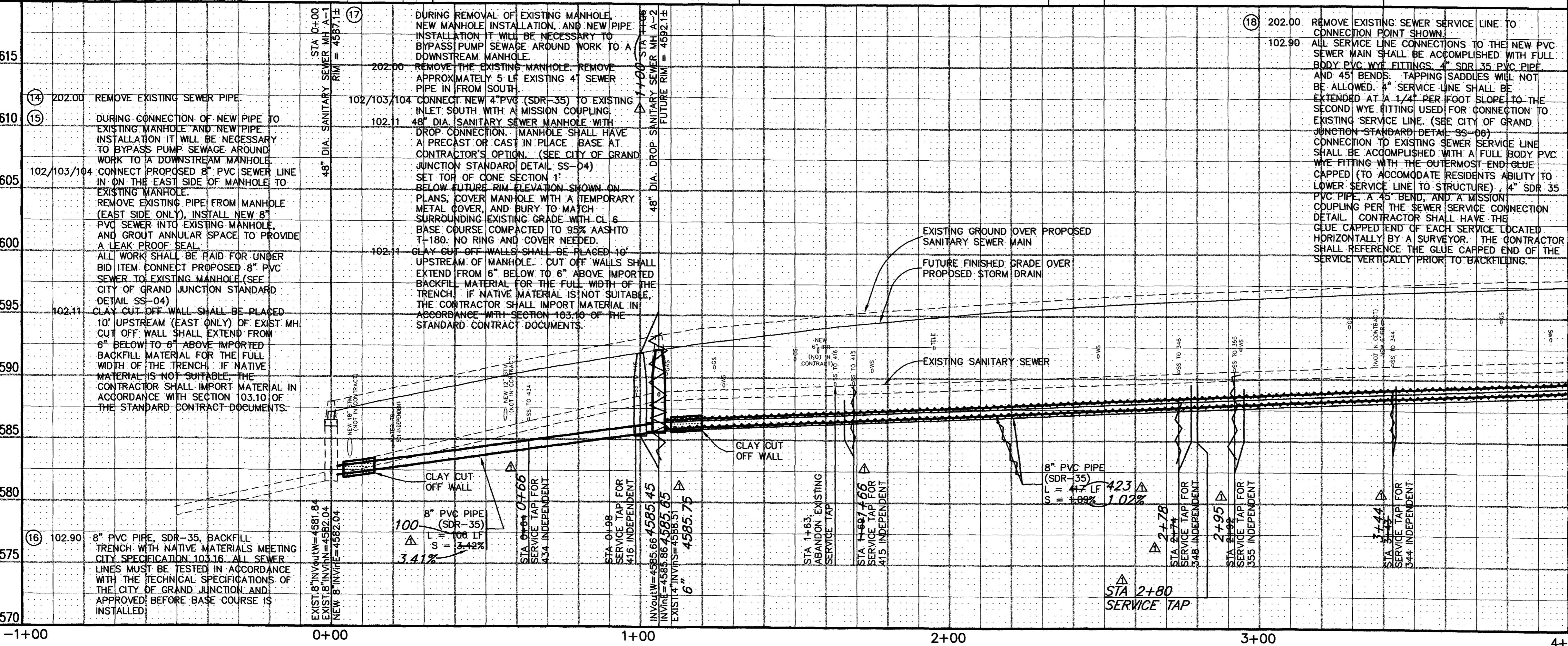
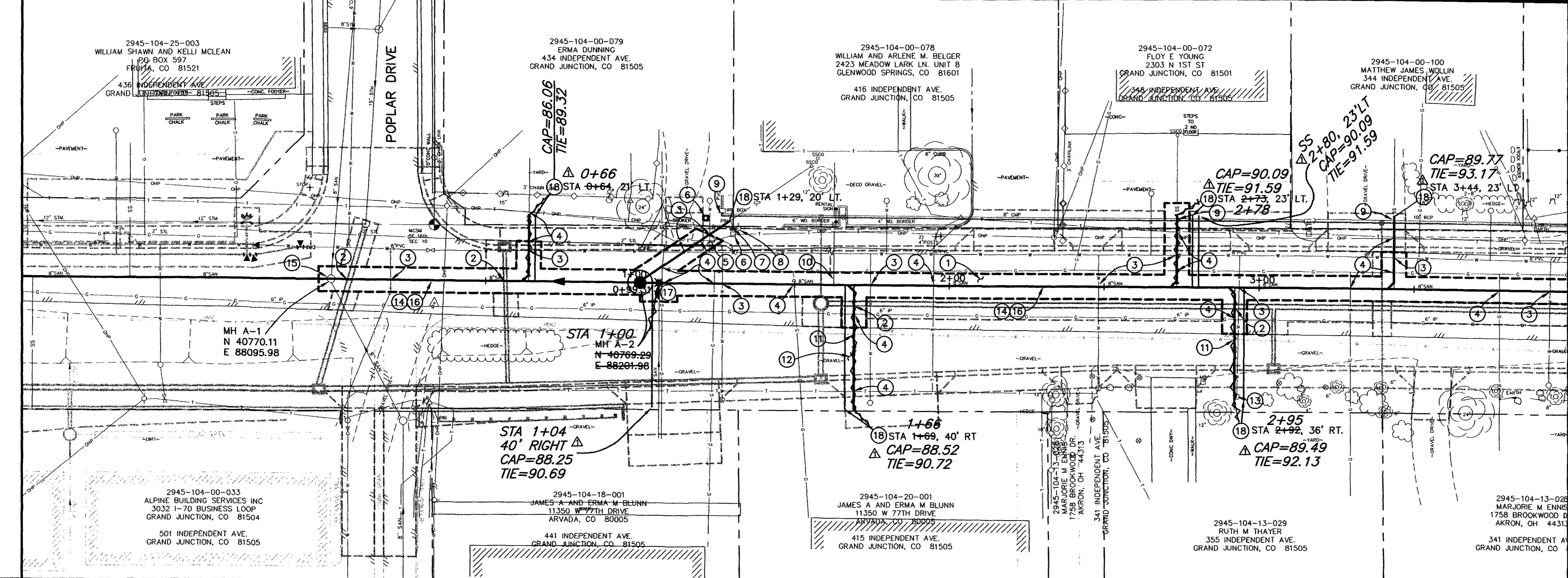
INDEPENDENT AVENUE  
SANITARY SEWER PLAN AND PROFILES



CONSTRUCTION NOTES

- 1 202.00 ASPHALT REMOVAL: CUT AND REMOVE PAVEMENT AS SHOWN. GENERALLY WIDTH TO INSTALL MANHOLES WILL BE 12' CENTERED ON THE MANHOLE AND SQUARED OFF AS SHOWN. FOR SERVICE LINES AND MAIN LINES REMOVAL WIDTH WILL BE 6' MINIMUM/8' MAXIMUM CENTERED ON THE PIPE.
- 304.00 AGGREGATE BASE COURSE (CL 6) (6" DEPTH) COMPACT BASE COURSE TO 95% AASHTO T-180. SUBGRADE SHALL BE COMPACTED TO 95% AASHTO T-99. (TEMPORARY SURFACE TREATMENT UNTIL ROADWAY RECONSTRUCTION - PHASE II)
- 2 STORM DRAIN WILL BE CONSTRUCTED AS PART OF ANOTHER CONTRACT
- 3 NOTIFY BUTCH KISSELL, CITY OF GRAND JUNCTION WATER SERVICES/PIPELINE MAINTENANCE SUPERVISOR AT 244-1572 48 HOURS PRIOR TO EXCAVATIONS THAT WILL EXPOSE WATER LINES.
- 4 NOTIFY XCEL ENERGY, QWEST COMMUNICATIONS, AND OR AT&T BROADBAND 48 HOURS PRIOR TO EXCAVATIONS THAT WILL EXPOSE GAS OR ELECTRIC LINES (XCEL), TELEPHONE LINES (QWEST), AND OR CABLE TV LINES (AT&T).
- 5 202.00 CONCRETE REMOVAL: SAWCUT AS NECESSARY. REMOVE CONCRETE AS SHOWN. GENERALLY WIDTH TO INSTALL MANHOLES WILL BE 12' CENTERED ON THE MANHOLE AND SQUARED OFF AS SHOWN. SERVICE LINES AND MAIN LINES REMOVAL WIDTH WILL BE 6' MINIMUM/8' MAXIMUM CENTERED ON THE PIPE.
- 304.00 AGGREGATE BASE COURSE (CL 6) (6" DEPTH) COMPACT BASE COURSE TO 95% AASHTO T-180. SUBGRADE SHALL BE COMPACTED TO 95% AASHTO T-99. (TEMPORARY SURFACE TREATMENT UNTIL ROADWAY RECONSTRUCTION - PHASE II)
- 6 210.00 RESET EXISTING MAILBOX TO TEMPORARY LOCATION AS SHOWN. MAILBOX WILL BE RESET PERMANENTLY AS A PART OF PHASE II CONSTRUCTION.
- 7 629.05 CONTRACTOR'S LICENSED SURVEYOR SHALL REFERENCE LOCATION AND RECORD REFERENCE DATA AS A PART OF "ASBUILDING" THIS CONTRACT.
- 8 UTILITY POLE WILL BE RELOCATED BY OTHERS.
- 9 IRRIGATION LINE WILL BE CONSTRUCTED AS PART OF ANOTHER CONTRACT.
- 10 202.00 ABANDON EXISTING SEWER SERVICE. CUT SEWER SERVICE PIPE CLOSE TO EDGE OF TRENCH. PLUG END OF SERVICE PIPE WITH CONCRETE PRIOR TO BACKFILLING.
- 11 202.00 CUT EXISTING ABANDONED WATER LINE CLOSE TO EDGE OF TRENCH. PLUG ENDS OF PIPES AT EITHER SIDE WITH CONCRETE PRIOR TO BACKFILLING.
- 12 304.00 4" CL 6 AGGREGATE BASE COURSE. RESTORE GRAVEL DRIVE AFTER COMPLETION OF SEWER INSTALLATION.
- 13 NOTIFY BUTCH KISSELL, CITY OF GRAND JUNCTION WATER SERVICES/PIPELINE MAINTENANCE SUPERVISOR AT 244-1572 72 HOURS PRIOR TO EXCAVATIONS THAT WILL EXPOSE WATER METER. THE CITY OF GRAND JUNCTION WILL RESET WATER METER AS NEEDED.

SEE SHEET 9  
MATCH LINE



REVISION	DESCRIPTION	DATE
ASBUILT		10-02

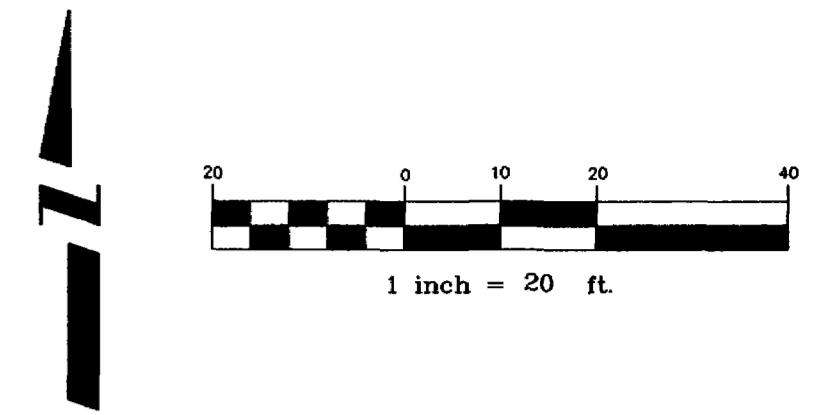
DRAWN BY JCS	DATE 2001
DESIGNED BY JCS	DATE 2001
CHECKED BY MC	DATE 2001
APPROVED BY	DATE

**DEPARTMENT OF PUBLIC WORKS AND UTILITIES  
ENGINEERING AND TECHNICAL SERVICES DIVISIONS  
CITY OF GRAND JUNCTION, COLORADO**

**INDEPENDENT AVENUE  
SANITARY SEWER PLAN AND PROFILES  
LINE "A", STA 0+00 TO STA 4+00**



- PROGRESS
- BID SET
- FINAL CONSTRUCTION DRAWINGS



CONSTRUCTION NOTES

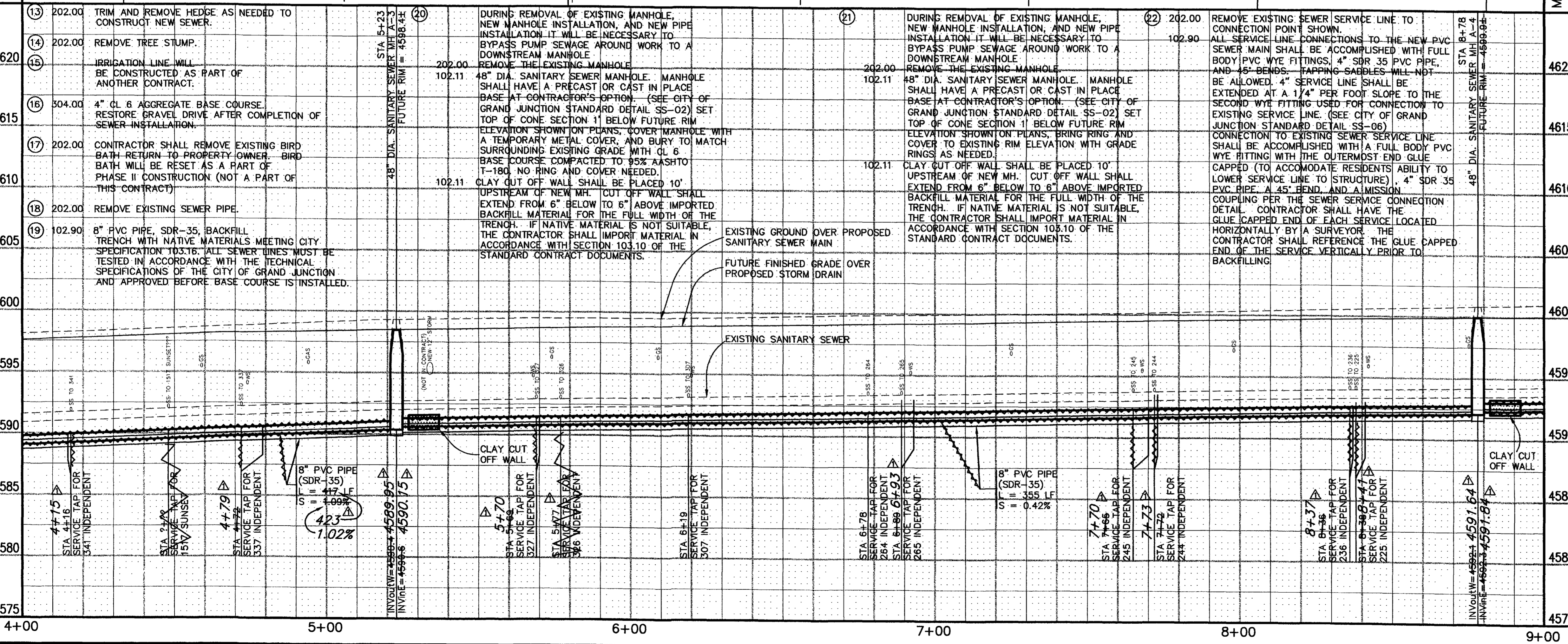
- 1 202.00 ASPHALT REMOVAL: CUT AND REMOVE PAVEMENT AS SHOWN. GENERALLY WIDTH TO INSTALL MANHOLES WILL BE 12' CENTERED ON THE MANHOLE AND SQUARED OFF AS SHOWN. FOR SERVICE LINES AND MAIN LINES REMOVAL WIDTH WILL BE 6' MINIMUM/8' MAXIMUM CENTERED ON THE PIPE.
- 304.00 AGGREGATE BASE COURSE (CL 6) (6" DEPTH) COMPACT BASE COURSE TO 95% AASHTO T-180. SUBGRADE SHALL BE COMPACTED TO 95% AASHTO T-99. (TEMPORARY SURFACE TREATMENT UNTIL ROADWAY RECONSTRUCTION - PHASE II)
- 2 STORM DRAIN WILL BE CONSTRUCTED AS PART OF ANOTHER CONTRACT
- 3 NOTIFY BUTCH KISSELL, CITY OF GRAND JUNCTION WATER SERVICES/PIPELINE MAINTENANCE SUPERVISOR AT 244-1572 48 HOURS PRIOR TO EXCAVATIONS THAT WILL EXPOSE WATER LINES.
- 4 NOTIFY XCEL ENERGY, QWEST COMMUNICATIONS, AND OR AT&T BROADBAND 48 HOURS PRIOR TO EXCAVATIONS THAT WILL EXPOSE GAS OR ELECTRIC LINES (XCEL), TELEPHONE LINES (QWEST), AND OR CABLE TV LINES (AT&T).
- 5 202.00 CONCRETE REMOVAL TO NEAREST CONSTRUCTION JOINT AS NEEDED TO ACCOMODATE SEWER CONSTRUCTION. REMOVE CONCRETE APPROXIMATELY AS SHOWN. IN MOST CASES JOINTS IN WALK DO NOT MATCH JOINTS IN CURB AND GUTTER. SAW CUTTING CURB AND GUTTER TO REMOVE TO NEAREST WALK JOINT WILL BE REQUIRED IN THESE INSTANCES.
- 304.00 AGGREGATE BASE COURSE (CL 6) (6" DEPTH) COMPACT BASE COURSE TO 95% AASHTO T-180. SUBGRADE SHALL BE COMPACTED TO 95% AASHTO T-180. (TEMPORARY SURFACE TREATMENT UNTIL ROADWAY RECONSTRUCTION - PHASE II)
- 6 210.00 RESET EXISTING MAILBOX TO TEMPORARY LOCATION AS SHOWN. MAILBOX WILL BE RESET PERMANENTLY AS A PART OF PHASE II CONSTRUCTION (NOT A PART OF THIS CONTRACT)
- 7 202.00 CUT EXISTING ABANDONED WATER LINE CLOSE TO EDGE OF TRENCH. PLUG ENDS OF PIPES AT EITHER SIDE WITH CONCRETE PRIOR TO BACKFILLING.
- 8 IRRIGATION LINE WILL BE CONSTRUCTED AS PART OF ANOTHER CONTRACT.
- 9 202.00 REMOVE ROCK BORDER AND RETURN TO PROPERTY OWNER. ROCK BORDER WILL BE RESET PERMANENTLY AS A PART OF PHASE II CONSTRUCTION (NOT A PART OF THIS CONTRACT)
- 10 202.00 REMOVE EXISTING FENCE AS NEEDED TO CONSTRUCT SEWER. CONTRACTOR SHALL SALVAGE FENCING MATERIAL AS FEASIBLE AND RETURN TO PROPERTY OWNER. FENCE WILL BE RESET AS A PART OF PHASE II CONSTRUCTION (NOT A PART OF THIS CONTRACT)
- 11 NOTIFY BUTCH KISSELL, CITY OF GRAND JUNCTION WATER SERVICES/PIPELINE MAINTENANCE SUPERVISOR AT 244-1572 72 HOURS PRIOR TO EXCAVATIONS THAT WILL EXPOSE WATER METER. THE CITY OF GRAND JUNCTION WILL RESET WATER METER AS NEEDED.
- 12 202.00 ABANDON EXISTING STORM DRAIN. CUT STORM DRAIN PIPE CLOSE TO EDGE OF TRENCH. PLUG END OF PIPE WITH CONCRETE PRIOR TO BACKFILLING.

SEE SHEET 8

SEE SHEET 10

MATCH LINE

MATCH LINE



REVISION	DESCRIPTION	DATE
ASBUILT		10-02

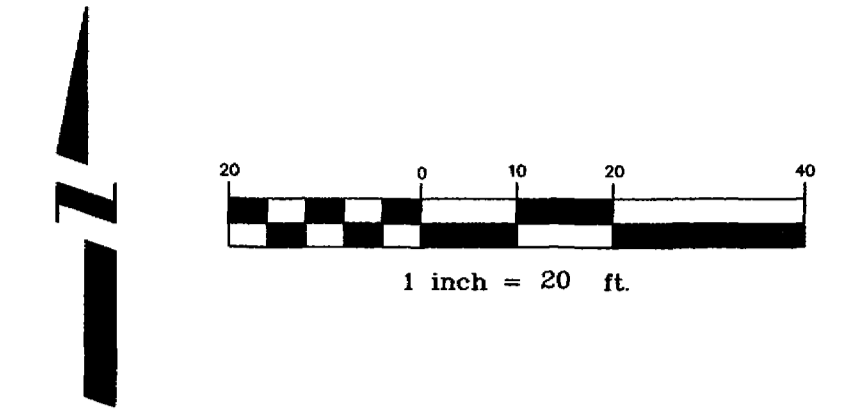
DRAWN BY	JCS	DATE	2001
DESIGNED BY	JCS	DATE	2001
CHECKED BY	MC	DATE	2001
APPROVED BY		DATE	

SCALE	
PLAN	1"=20'
PROFILE	1"=20'
HORIZ.	1"=20'
VERT.	1"=5'

**DEPARTMENT OF PUBLIC WORKS AND UTILITIES  
ENGINEERING AND TECHNICAL SERVICES DIVISIONS  
CITY OF GRAND JUNCTION, COLORADO**

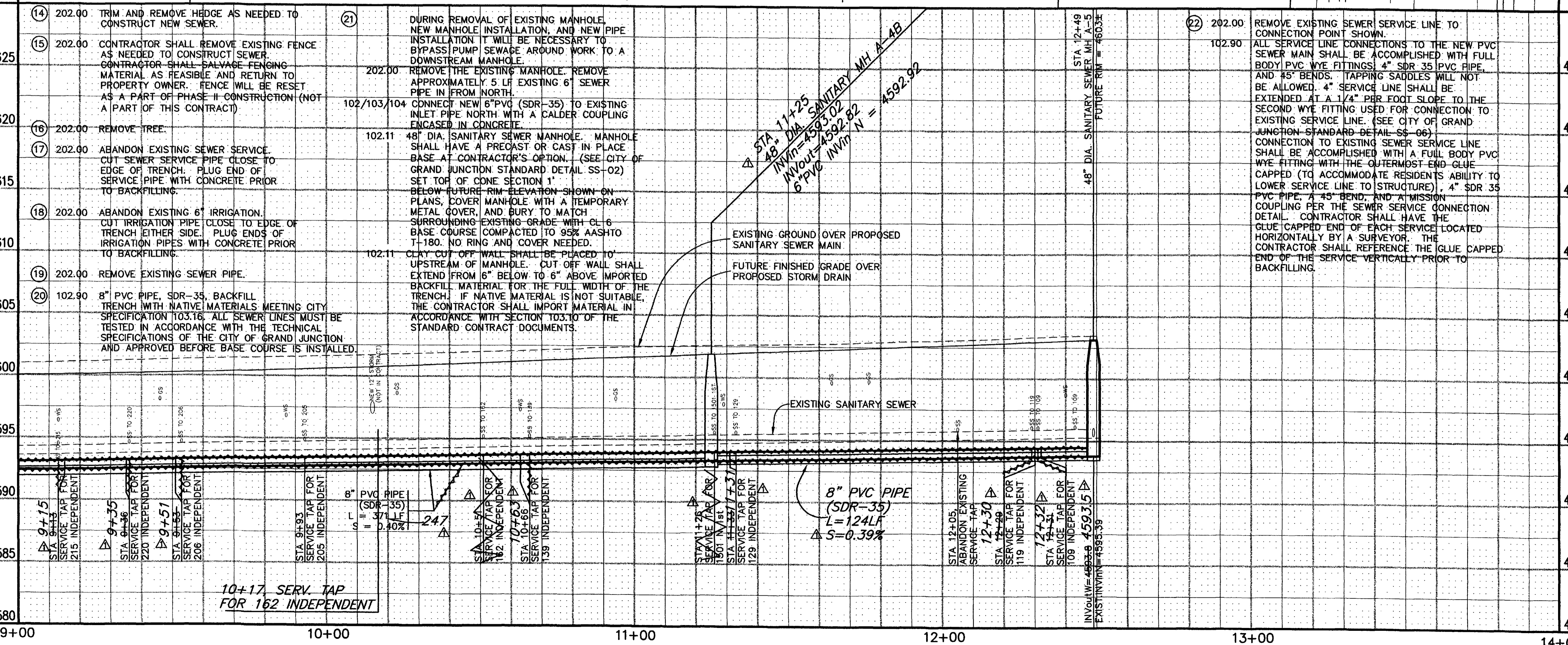
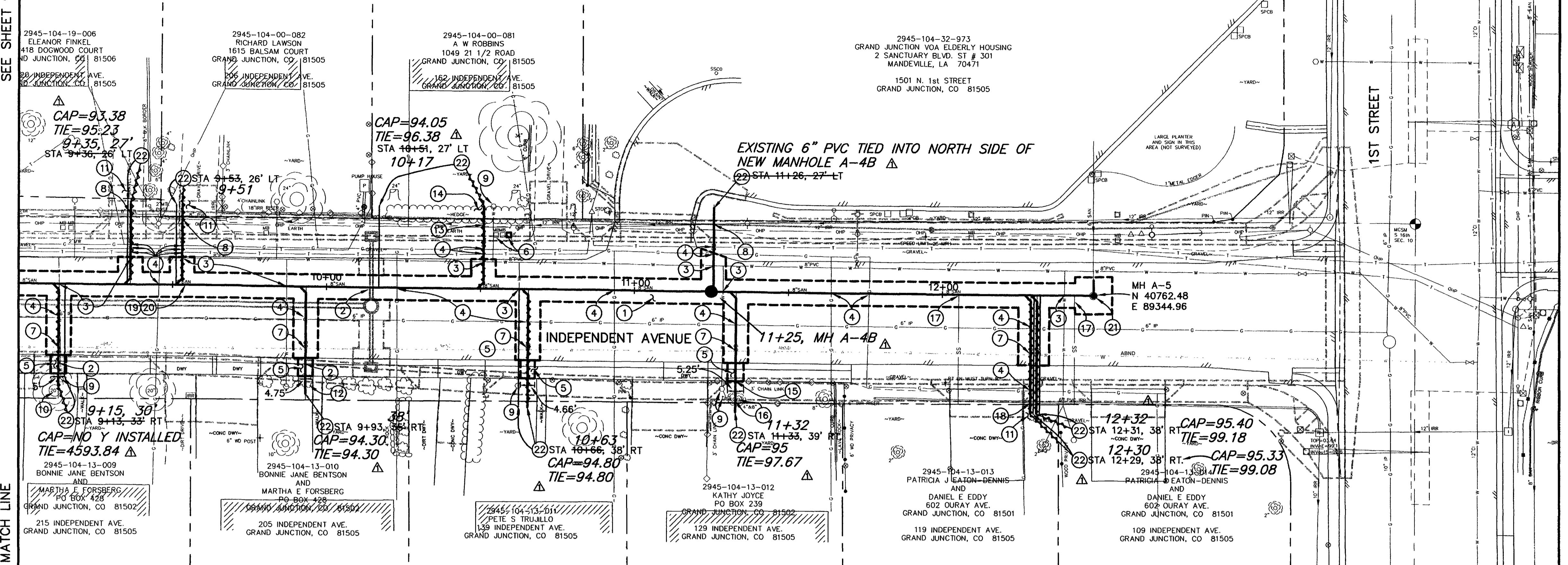
**INDEPENDENT AVENUE  
SANITARY SEWER PLAN AND PROFILES  
LINE "A", STA 4+00 TO STA 9+00**

DRAWING STATUS:  
○ PROGRESS  
● BID SET  
● FINAL CONSTRUCTION DRAWINGS



CONSTRUCTION NOTES

- ① 202.00 ASPHALT REMOVAL: CUT AND REMOVE PAVEMENT AS SHOWN. GENERALLY WIDTH TO INSTALL MANHOLES WILL BE 12' CENTERED ON THE MANHOLE AND SQUARED OFF AS SHOWN. FOR SERVICE LINES AND MAIN LINES REMOVAL WIDTH WILL BE 6' MINIMUM/8' MAXIMUM CENTERED ON THE PIPE.
- 304.00 AGGREGATE BASE COURSE (CL 6) (6" DEPTH) COMPACT BASE COURSE TO 95% AASHTO T-180. SUBGRADE SHALL BE COMPACTED TO 95% AASHTO T-99. (TEMPORARY SURFACE TREATMENT UNTIL ROADWAY RECONSTRUCTION - PHASE II)
- ② STORM DRAIN WILL BE CONSTRUCTED AS A PART OF ANOTHER CONTRACT.
- ③ NOTIFY BUTCH KISSELL, CITY OF GRAND JUNCTION WATER SERVICES/PIPELINE MAINTENANCE SUPERVISOR AT 244-1572 48 HOURS PRIOR TO EXCAVATIONS THAT WILL EXPOSE WATER LINES.
- ④ NOTIFY XCEL ENERGY, QWEST COMMUNICATIONS, AND OR AT&T BROADBAND 48 HOURS PRIOR TO EXCAVATIONS THAT WILL EXPOSE GAS OR ELECTRIC LINES (XCEL), TELEPHONE LINES (QWEST), AND OR CABLE TV LINES (AT&T).
- ⑤ 202.00 CONCRETE REMOVAL TO NEAREST CONSTRUCTION JOINT AS NEEDED TO ACCOMMODATE SEWER CONSTRUCTION. REMOVE CONCRETE APPROXIMATELY AS SHOWN. IN MOST CASES JOINTS IN WALK DO NOT MATCH JOINTS IN CURB AND GUTTER. SAW CUTTING CURB AND GUTTER TO REMOVE TO NEAREST WALK JOINT WILL BE REQUIRED IN THESE INSTANCES
- 304.00 AGGREGATE BASE COURSE (CL 6) (6" DEPTH) COMPACT BASE COURSE TO 95% AASHTO T-180. SUBGRADE SHALL BE COMPACTED TO 95% AASHTO T-180. (TEMPORARY SURFACE TREATMENT UNTIL ROADWAY RECONSTRUCTION - PHASE II)
- ⑥ 210.00 RESET EXISTING MAILBOX TO TEMPORARY LOCATION AS SHOWN. MAILBOX WILL BE RESET PERMANENTLY AS A PART OF PHASE II CONSTRUCTION (NOT A PART OF THIS CONTRACT)
- ⑦ 202.00 CUT EXISTING ABANDONED WATER LINE CLOSE TO EDGE OF TRENCH. PLUG ENDS OF PIPES AT EITHER SIDE WITH CONCRETE PRIOR TO BACKFILLING.
- ⑧ IRRIGATION LINE WILL BE CONSTRUCTED AS A PART OF ANOTHER CONTRACT.
- ⑨ NOTIFY BUTCH KISSELL, CITY OF GRAND JUNCTION WATER SERVICES/PIPELINE MAINTENANCE SUPERVISOR AT 244-1572 72 HOURS PRIOR TO EXCAVATIONS THAT WILL EXPOSE WATER METER. THE CITY OF GRAND JUNCTION WILL RESET WATER METER AS NEEDED.
- ⑩ MAKE CONNECTION TO EXISTING SEWER AS FAR SOUTH AS POSSIBLE WITHOUT CAUSING DAMAGE TO EXISTING TREE. APPROVE FINAL CONNECTION POINT WITH PROJECT ENGINEER BEFORE MAKING CONNECTION.
- ⑪ 304.00 4" CL 6 AGGREGATE BASE COURSE. RESTORE GRAVEL DRIVE AFTER COMPLETION OF SEWER INSTALLATION.
- ⑫ 202.00 REMOVE EXISTING BUSH.
- ⑬ IRRIGATION WILL BE CONSTRUCTED AS A PART OF ANOTHER CONTRACT.



REVISION	DESCRIPTION	DATE	DRAWN BY	DATE
1	ASBUILT	10-02	JCS	2001
2			JCS	2001
3			MC	2001
4				

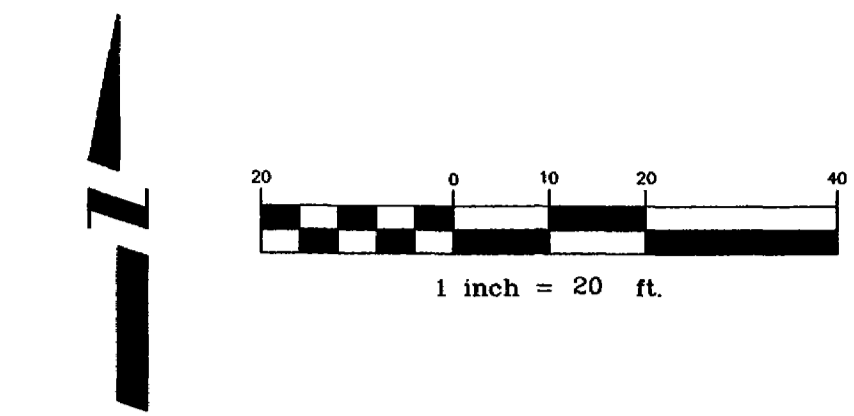
**DEPARTMENT OF PUBLIC WORKS AND UTILITIES  
ENGINEERING AND TECHNICAL SERVICES DIVISIONS  
CITY OF GRAND JUNCTION, COLORADO**

**INDEPENDENT AVENUE  
SANITARY SEWER PLAN AND PROFILES  
LINE "A", STA 9+00 TO STA 12+49**

103-00-064  
STRAIGHT  
HORIZONTAL DRIVE  
CTION, CO 81506  
DEPENDENT AVE  
CTION, CO 81505

PROJECT NO. 2011-F15200

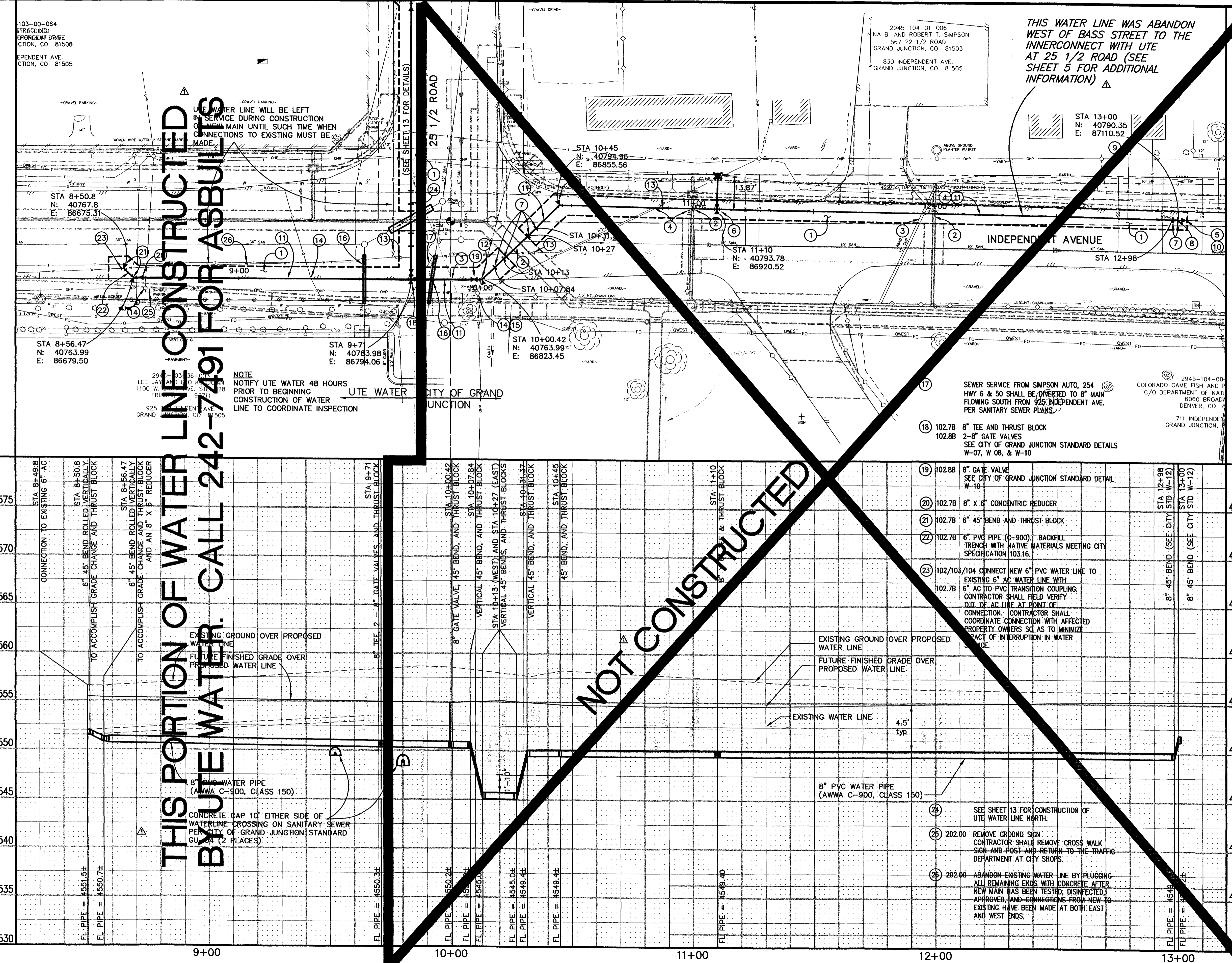
DRAWING STATUS:  
○ PROGRESS  
○ BID SET  
● FINAL CONSTRUCTION DRAWINGS



CONSTRUCTION NOTES

- 1 202.00 ASPHALT REMOVAL: CUT AND REMOVE PAVEMENT AS SHOWN. GENERALLY WIDTH TO INSTALL SERVICE LINES AND MAIN LINES WILL BE 6' MINIMUM/8' MAXIMUM CENTERED ON THE PIPE.
- 304.00 AGGREGATE BASE COURSE (CL 6) (6" DEPTH) COMPACT BASE COURSE TO 95% AASHTO T-180. SUBGRADE SHALL BE COMPACTED TO 95% AASHTO T-99. (TEMPORARY SURFACE TREATMENT UNTIL ROADWAY RECONSTRUCTION - PHASE II)
- 2 STORM DRAIN WILL BE CONSTRUCTED AS A PART OF ANOTHER CONTRACT.
- 3 202.00 CUT EXISTING ABANDONED STORM/IRRIGATION PIPE CLOSE TO EDGE OF TRENCH. PLUG END OF PIPE WITH CONCRETE PRIOR TO BACKFILLING.
- 4 202.00 REMOVE EXISTING 8" PVC WATER MAIN FROM 10+80± TO 13+05± (POINT OF CONNECTION EAST), 8" X 6" TEE, AND 6" HYDRANT RUN VALVE. VALVE SHALL BE SALVAGED AND RETURNED TO CITY SHOPS. PLUG EAST END OF REMAINING 8" PVC TO ABANDON. 6" PVC TO SOUTH AND FIRE HYDRANT WILL BE REMOVED DURING STORM DRAIN CONSTRUCTION. STORM DRAIN NOT IN THIS CONTRACT.
- 5 102.7B 8" PVC PLUG AND THRUST BLOCK. (TEMPORARY) SEE CITY OF GRAND JUNCTION STANDARD DETAIL W-07 & W-08
- 6 102.7B 8" X 6" PVC TEE AND THRUST BLOCK  
102.8B 6" GATE VALVE  
102.7B 6" PVC PIPE (C-900)  
102.8A 6" FIRE HYDRANT ASSEMBLY SEE CITY OF GRAND JUNCTION STANDARD DETAILS W-07 - W-10
- 7 102.7B 8" 45° BENDS (VERTICAL) AND THRUST BLOCKS. SEE CITY OF GRAND JUNCTION STANDARD DETAIL W-12.
- 8 102/103/104 CONNECT NEW 8" PVC TO EXISTING 8" PVC
- 9 202.00 ABANDONED WATER METER SHALL BE REMOVED AND ANY LINE LEAVING METER SHALL BE CAPPED.
- 10 PIPE FROM EAST SHALL BE PLUGGED UNTIL NEW LINE CAN BE TESTED AND DISINFECTED AFTER WHICH CONTRACTOR MAY MAKE CONNECTION TO NEW PIPE.
- 11 102.7B 8" PVC PIPE (C-900). BACKFILL TRENCH WITH NATIVE MATERIALS MEETING CITY SPECIFICATION 103.16.
- 12 102.7B 8" 45° BEND AND THRUST BLOCK.
- 13 202.00 REMOVE EXISTING WATER VALVE AND RETURN TO CITY SHOPS AFTER NEW MAIN HAS BEEN TESTED, DISINFECTED, APPROVED, AND CONNECTIONS FROM NEW TO EXISTING HAVE BEEN MADE AT BOTH EAST AND WEST ENDS.
- 14 GAS LINE/OVERHEAD POWER, TELEPHONE SHALL BE RELOCATED BY OTHERS
- 15 202.00 REMOVE GROUND SIGN CONTRACTOR SHALL REMOVE CROSS WALK SIGN FROM UTILITY POLE AND RETURN TO THE TRAFFIC DEPARTMENT AT CITY SHOPS.
- 16 104.40 CONCRETE CAP EXCAVATE AROUND EXISTING SEWER MAIN TO SPRING LINE OF PIPE 10' EITHER SIDE OF SEWER MAIN CROSSING AND CAP SEWER MAIN PER CITY OF GRAND JUNCTION STANDARD DETAIL GU 04.

THIS PORTION OF WATER LINE CONSTRUCTED BY UTE WATER. CALL 242-7491 FOR ASBUILTS



REVISION	DESCRIPTION	DATE
ASBUILT		10-02

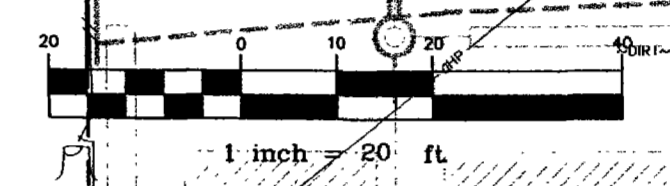
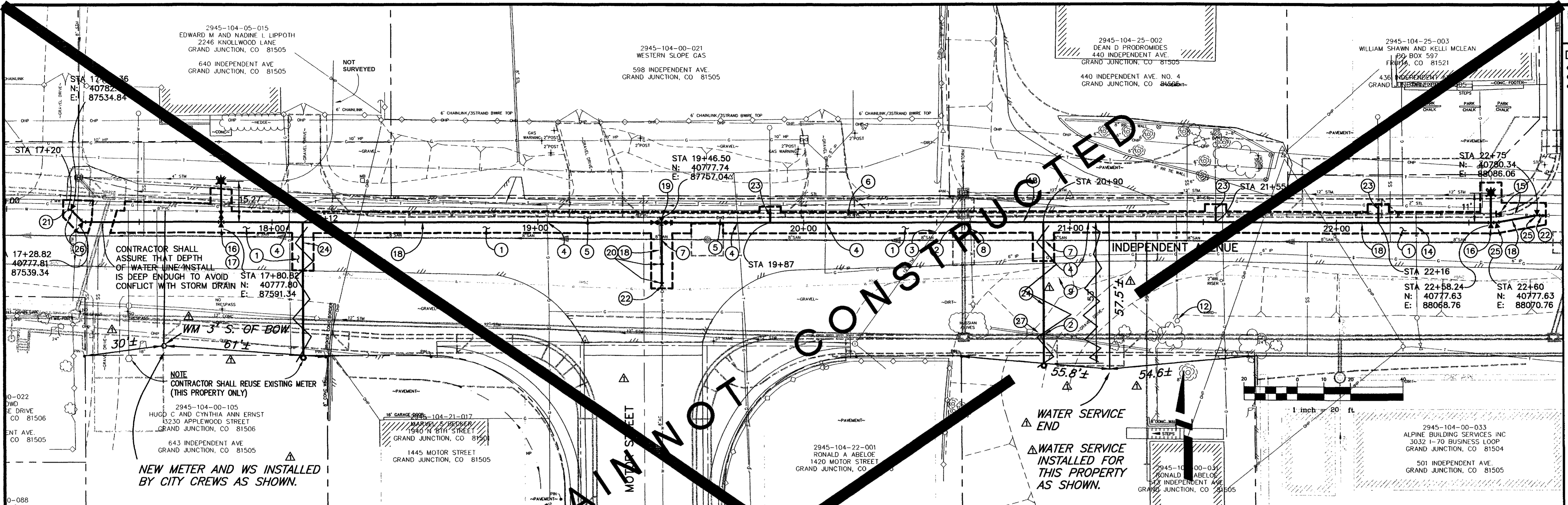
DRAWN BY	JCS	DATE	2001
DESIGNED BY	JCS	DATE	2001
CHECKED BY	MC	DATE	2001
APPROVED BY		DATE	

SCALE	
PLAN	1"=20'
PROFILE	1"=20'
HORIZ.	1"=20'
VERT.	1"=5'

DEPARTMENT OF PUBLIC WORKS AND UTILITIES  
ENGINEERING AND TECHNICAL SERVICES DIVISIONS  
CITY OF GRAND JUNCTION, COLORADO

INDEPENDENT AVENUE  
WATER LINE PLAN AND PROFILES  
LINE "A", STA 11+00 TO STA 13+00

DRAWING STATUS:  
 ○ PROGRESS  
 ○ BID SET  
 ● FINAL CONSTRUCTION DRAWINGS



WATER SERVICE END  
 WATER SERVICE INSTALLED FOR THIS PROPERTY AS SHOWN.

CONTRACTOR SHALL ASSURE THAT DEPTH OF WATER LINE INSTALL IS DEEP ENOUGH TO AVOID CONFLICT WITH STORM DRAIN

NOTE CONTRACTOR SHALL REUSE EXISTING METER (THIS PROPERTY ONLY)

NEW METER AND WS INSTALLED BY CITY CREWS AS SHOWN.

STATION	DESCRIPTION	DATE
4590	202.00 ASPHALT REMOVAL, CUT AND REMOVE PAVEMENT AS SHOWN. GENERALLY WIDTH TO INSTALL SERVICE LINES AND MAIN LINES WILL BE 8' MINIMUM/8' MAXIMUM CENTERED ON THE PIPE.	10-02
4585	202.00 STORM DRAIN CROSSING, STORM DRAIN CONSTRUCTED PER PHASE 1B CONTRACT.	10-02
4580	202.00 CUT EXISTING 12" STORM DRAIN CLOSE TO EDGE OF TRENCH. PLUG NORTH END OF REMAINING PIPE WITH CONCRETE PRIOR TO BACKFILLING. (INCIDENTAL TO WATER LINE CONSTRUCTION)	10-02
4575	202.00 NOTIFY XCEL ENERGY, QWEST COMMUNICATIONS, AND OR AT&T BROADBAND 48 HOURS PRIOR TO EXCAVATIONS THAT WILL EXPOSE GAS OR ELECTRIC LINES (XCEL), TELEPHONE LINES (QWEST), AND OR CABLE TV LINES (AT&T).	10-02
4570	202.00 REMOVE EXISTING WATER VALVE BOX AFTER NEW MAIN HAS BEEN TESTED, DISINFECTED, APPROVED, AND CONNECTIONS FROM NEW TO EXISTING HAVE BEEN MADE AT BOTH EAST AND WEST ENDS. (INCIDENTAL TO WATER LINE CONSTRUCTION)	10-02
4565	202.00 ABANDON EXISTING 8" PVC WATER LINE AFTER NEW MAIN HAS BEEN TESTED, DISINFECTED, APPROVED, AND CONNECTIONS FROM NEW TO EXISTING HAVE BEEN MADE AT BOTH EAST AND WEST ENDS. PIPE SHALL BE ABANDONED BY PLUGGING REMAINING ENDS AT EITHER END WITH CONCRETE.	10-02
4560	202.00 REMOVE EXISTING TAPPING SADDLE, CORP. STOP, AND SERVICE LINE TO EDGE OF TRENCH AND CAP OR PLUG. (INCIDENTAL TO WATER LINE CONSTRUCTION)	10-02
4555	202.00 REMOVE EXISTING 8" PVC WATER MAIN FROM VALVE TO 18' WEST AND PLUG EAST END OF REMAINING LINE (INCIDENTAL TO WATER LINE CONSTRUCTION) TO MAINTAIN SERVICE DURING CONST. WITH THE FOLLOWING: 8" PVC PLUG AND THRUST BLOCK. SEE CITY OF GRAND JUNCTION STANDARD DETAIL W-07 & W-08. AFTER NEW LINE HAS BEEN CONSTRUCTED, TESTED, DISINFECTED, APPROVED, AND CONNECTED BACK TO EXISTING WATER MAIN AT BOTH ENDS. PLUG REMAINING END OF EXISTING LINE AT EAST TIE LOCATION TO ABANDON EXIST PIPE.	10-02
4550	202.00 REMOVE EXISTING WATER MAIN AND VALVE AT TEE FROM TEE TO VALVE SOUTH. RETURN VALVE TO CITY SHOPS. (ALL WORK INCIDENTAL TO WATER LINE CONSTRUCTION)	10-02
4545	202.00 REMOVE EXISTING WATER MAIN AND VALVE AT TEE FROM TEE TO VALVE SOUTH. RETURN VALVE TO CITY SHOPS. (ALL WORK INCIDENTAL TO WATER LINE CONSTRUCTION)	10-02

- CONSTRUCTION NOTES**
- 21) 102/103/104 CONNECT NEW PVC WATER MAIN TO EXISTING PVC (INCIDENTAL TO WATER LINE CONSTRUCTION)
  - 22) 102/103/104 CONNECT NEW PVC WATER LINE TO EXISTING VALVE. (INCIDENTAL TO WATER LINE CONSTRUCTION)
  - 23) TAP MAIN, LOWER SERVICE, AND CONNECT BACK TO EXISTING SERVICE USING FOLLOWING APPURTENANCES/LINES/FITTINGS: 102.8J CORPORATION STOP, TAPPING SADDLE, 102.7C 1" TYPE K COPPER SERVICE LINE AS NEEDED AND COMPRESSION COUPLER FITTING TO CONNECT BACK TO EXISTING SERVICE LINE. SEE CITY OF GRAND JUNCTION STANDARD DETAIL W-03
  - 24) TAP MAIN, INSTALL SERVICE, INSTALL NEW METER AND CONNECT BACK TO EXISTING SERVICE BEYOND METER USING THE FOLLOWING APPURTENANCES/LINES/FITTINGS/ETC.: 102.8J CORPORATION STOP, TAPPING SADDLE, 102.7C 1" TYPE K COPPER SERVICE LINE AS NEEDED AND COMPRESSION COUPLER FITTING TO CONNECT BACK TO EXISTING SERVICE LINE. SEE CITY OF GRAND JUNCTION STANDARD DETAIL W-03
  - 25) 102.7B 8" 11 1/4" BEND AND THRUST BLOCK.
  - 26) 102.7B 8" 45' BEND AND THRUST BLOCK.
  - 27) 202.00 REMOVE CULVERT AS NEEDED (INCIDENTAL TO WATER LINE CONST)

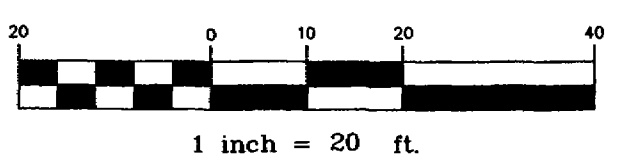
REVISION	DESCRIPTION	DATE	DRAWN BY	DATE	SCALE
REVISION A	ASBUILT	10-02	JCS	2002	PLAN PROFILE
REVISION B			JCS	2002	HORIZ. 1"=20' HORIZ. 1"=20'
REVISION C			MC	2002	VERT. 1"=5'
REVISION D					

DEPARTMENT OF PUBLIC WORKS AND UTILITIES  
 ENGINEERING AND TECHNICAL SERVICES DIVISIONS  
 CITY OF GRAND JUNCTION, COLORADO

INDEPENDENT AVENUE  
 WATER LINE PLAN AND PROFILES  
 LINE "A", STA 17+60 TO STA 23+00

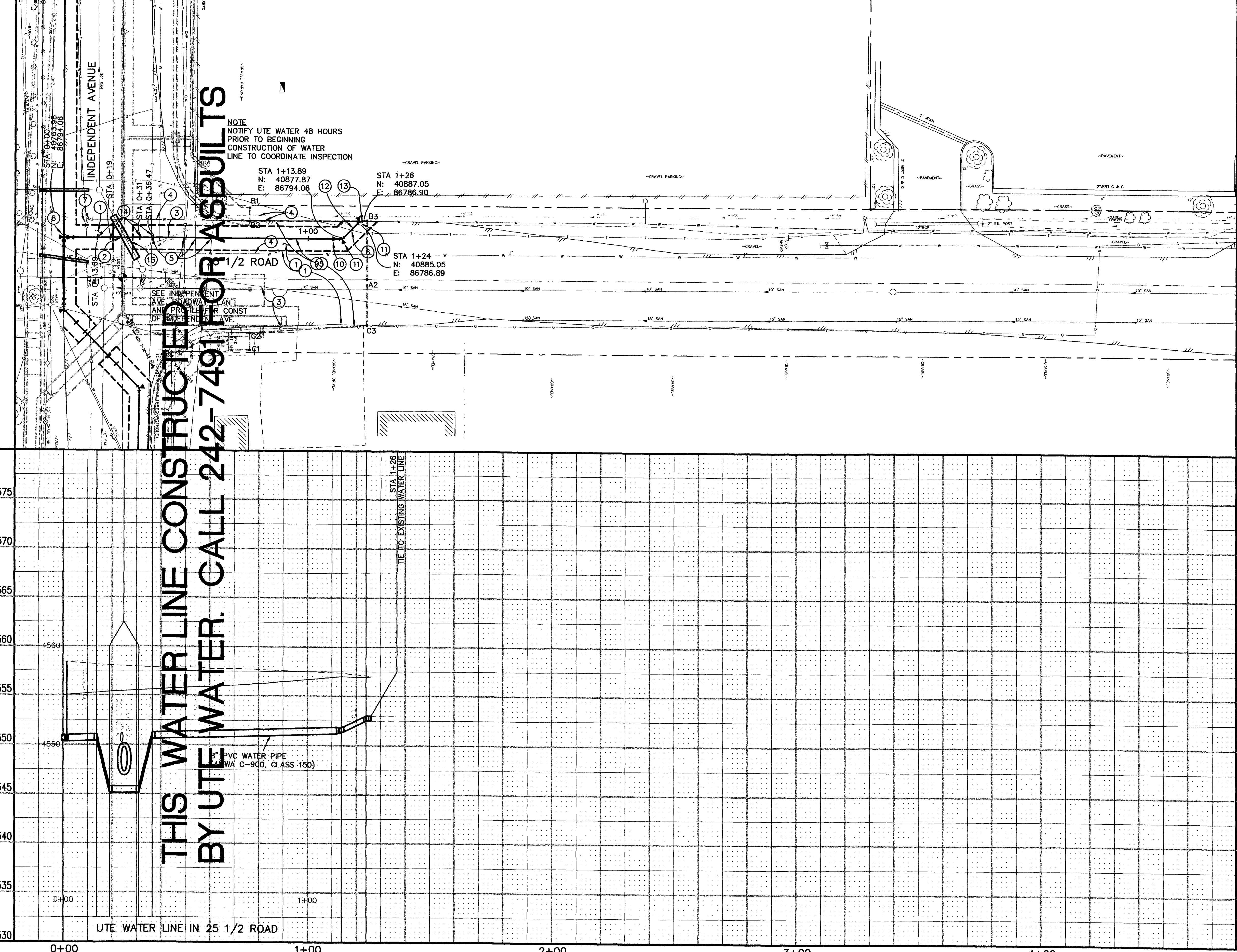
DRAWING STATUS:

- PROGRESS
- BID SET
- FINAL CONSTRUCTION DRAWINGS



CONSTRUCTION NOTES

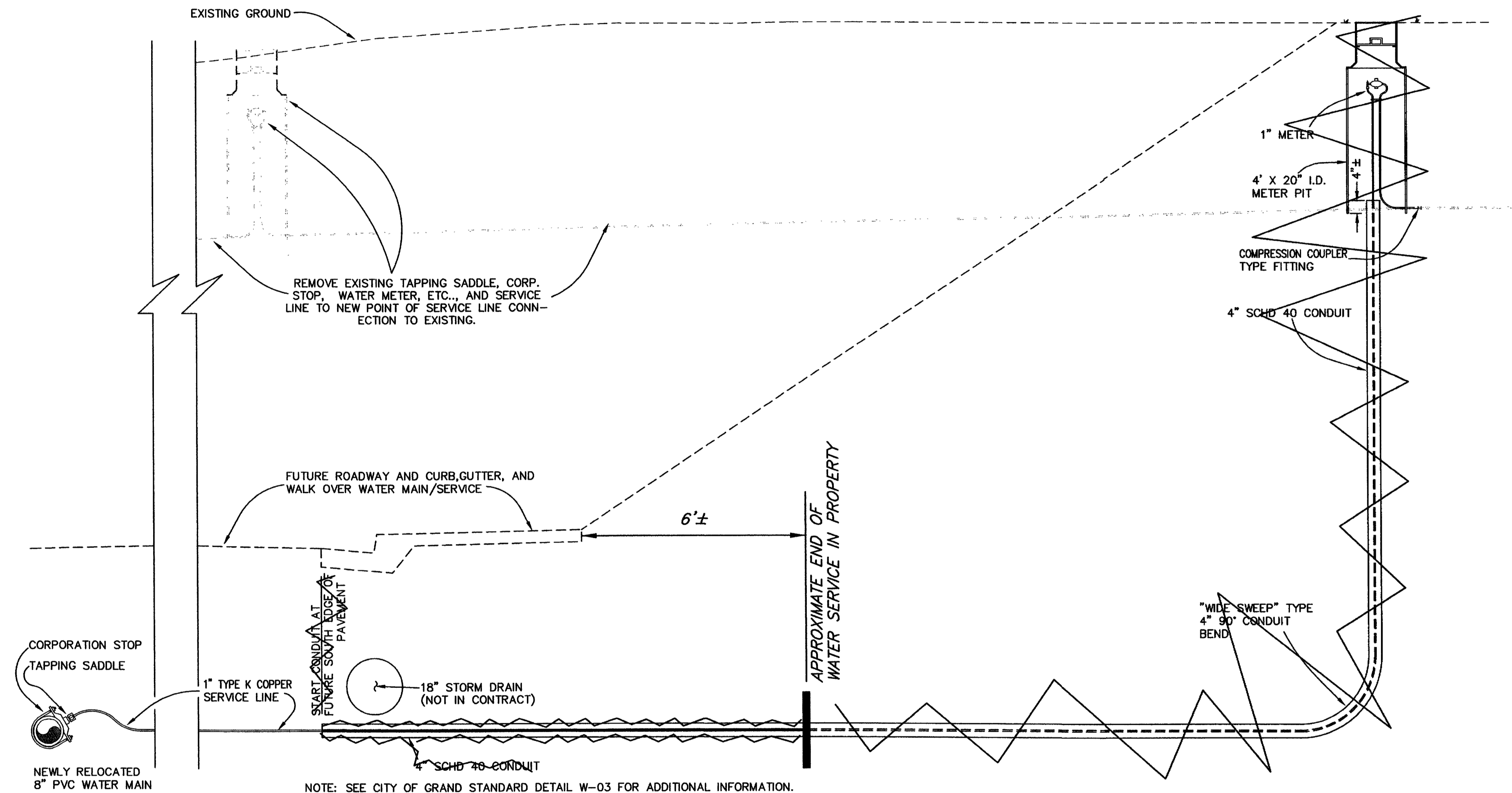
- 1 202.00 ASPHALT REMOVAL: CUT AND REMOVE PAVEMENT AS SHOWN. GENERALLY WIDTH TO INSTALL SERVICE LINES AND MAIN LINES WILL BE 6' MINIMUM/8' MAXIMUM CENTERED ON THE PIPE.
- 304.00 AGGREGATE BASE COURSE (CL 6) (6" DEPTH) COMPACT BASE COURSE TO 95% AASHTO T-180. SUBGRADE SHALL BE COMPACTED TO 95% AASHTO T-99. (TEMPORARY SURFACE TREATMENT UNTIL ROADWAY RECONSTRUCTION - PHASE II)
- 2 STORM DRAIN WILL BE CONSTRUCTED AS A PART OF ANOTHER CONTRACT.
- 3 202.00 CUT EXISTING ABANDONED STORM/IRRIGATION PIPE CLOSE TO EDGE OF TRENCH. PLUG END OF PIPE WITH CONCRETE PRIOR TO BACKFILLING.
- 4 202.00 ABANDON EXISTING WATER LINE BY PLUGGING ALL REMAINING ENDS WITH CONCRETE AFTER NEW MAIN HAS BEEN TESTED, DISINFECTED, APPROVED, AND CONNECTIONS FROM NEW TO EXISTING HAVE BEEN MADE AT BOTH WEST AND NORTH ENDS.
- 5 GAS LINE/OVERHEAD POWER, TELEPHONE SHALL BE RELOCATED BY OTHERS
- 6 NOTIFY XCEL ENERGY, QWEST COMMUNICATIONS, UTE WATER, AND OR AT&T BROADBAND 48 HOURS PRIOR TO EXCAVATIONS THAT WILL EXPOSE GAS OR ELECTRIC LINES (XCEL), TELEPHONE LINES (QWEST), WATER LINES (UTE), AND OR CABLE TV LINES (AT&T).
- 7 202.00 REMOVE EXISTING WATER VALVE AND RETURN TO CITY SHOPS AFTER NEW MAIN HAS BEEN TESTED, DISINFECTED, APPROVED, AND CONNECTIONS FROM NEW TO EXISTING HAVE BEEN MADE AT BOTH EAST AND WEST ENDS.
- 8 102.7B 8" TEE AND THRUST BLOCK  
102.8B 2-8" GATE VALVES  
SEE CITY OF GRAND JUNCTION STANDARD DETAILS W-07, W 08, & W-10
- 9 102.7B 8" PVC PIPE (C-900). BACKFILL TRENCH WITH NATIVE MATERIALS MEETING CITY SPECIFICATION 103.16.
- 10 102.7B 8" X 6" CONCENTRIC REDUCER
- 11 102.7B 6" 45° BEND AND THRUST BLOCK
- 12 102.7B 6" PVC PIPE (C-900). BACKFILL TRENCH WITH NATIVE MATERIALS MEETING CITY SPECIFICATION 103.16.
- 13 210.00 CONNECT NEW 6" PVC WATER LINE TO EXISTING 6" AC WATER LINE WITH 6" AC TO PVC TRANSITION COUPLING. CONTRACTOR SHALL FIELD VERIFY O.D. OF AC LINE AT POINT OF CONNECTION. CONTRACTOR SHALL COORDINATE CONNECTION WITH AFFECTED PROPERTY OWNERS SO AS TO MINIMIZE IMPACT OF INTERRUPTION IN WATER SERVICE.
- 14 102.7B 8" 45° BENDS (VERTICAL) AND THRUST BLOCKS. SEE CITY OF GRAND JUNCTION STANDARD DETAIL W-12.
- 15 104.40 REINFORCED CONCRETE ENCASUREMENT. EXCAVATE AROUND EXISTING SEWER MAIN 10' EITHER SIDE OF WATER LINE CROSSING AND ENCASE SEWER MAIN PER CITY OF GRAND JUNCTION STANDARD DETAIL GU-04. BRACE SEWER MAIN AS NEEDED SO AS NOT TO CAUSE SAGS IN LINE.



REVISION $\Delta$ ASBUILT	DATE 10-02	DRAWN BY JCS	DATE 2001	SCALE PLAN HORIZ. 1"=20' HORIZ. 1"=20' VERT. 1"=5'
REVISION $\Delta$		DESIGNED BY JCS	DATE 2001	
REVISION $\Delta$		CHECKED BY MC	DATE 2001	
REVISION $\Delta$		APPROVED BY	DATE	

DEPARTMENT OF PUBLIC WORKS AND UTILITIES  
ENGINEERING AND TECHNICAL SERVICES DIVISIONS  
CITY OF GRAND JUNCTION, COLORADO

INDEPENDENT AVENUE  
WATER LINE PLAN AND PROFILES  
LINE "C", STA 0+00 TO STA 1+26



**WATER SERVICE LOWERING AT 513 INDEPENDENT**  
NTS

**SEWER SERVICE CONNECTION DETAIL**  
NTS

**TEMPORARY METAL COVERS DETAIL**  
NTS

REVISION	DESCRIPTION	DATE	DRAWN BY	DATE
REVISION Δ	ASBUILT	10-02	JCS	
REVISION Δ			JCS	
REVISION Δ			MC	
REVISION Δ				

SCALE
N.T.S.

DEPARTMENT OF PUBLIC WORKS AND UTILITIES  
ENGINEERING AND TECHNICAL SERVICES DIVISIONS  
CITY OF GRAND JUNCTION, COLORADO

INDEPENDENT AVENUE  
MISCELLANEOUS PROJECT  
STANDARD DETAILS