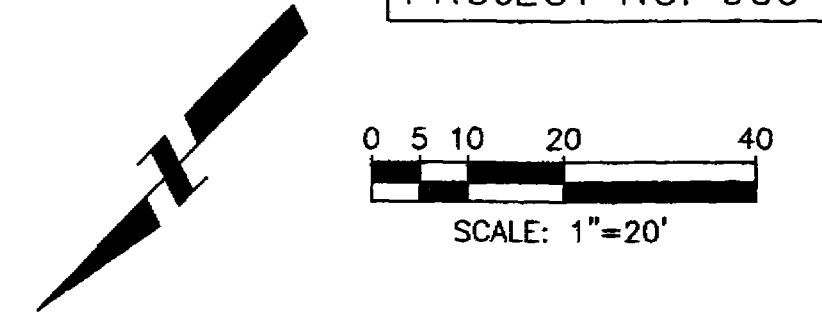
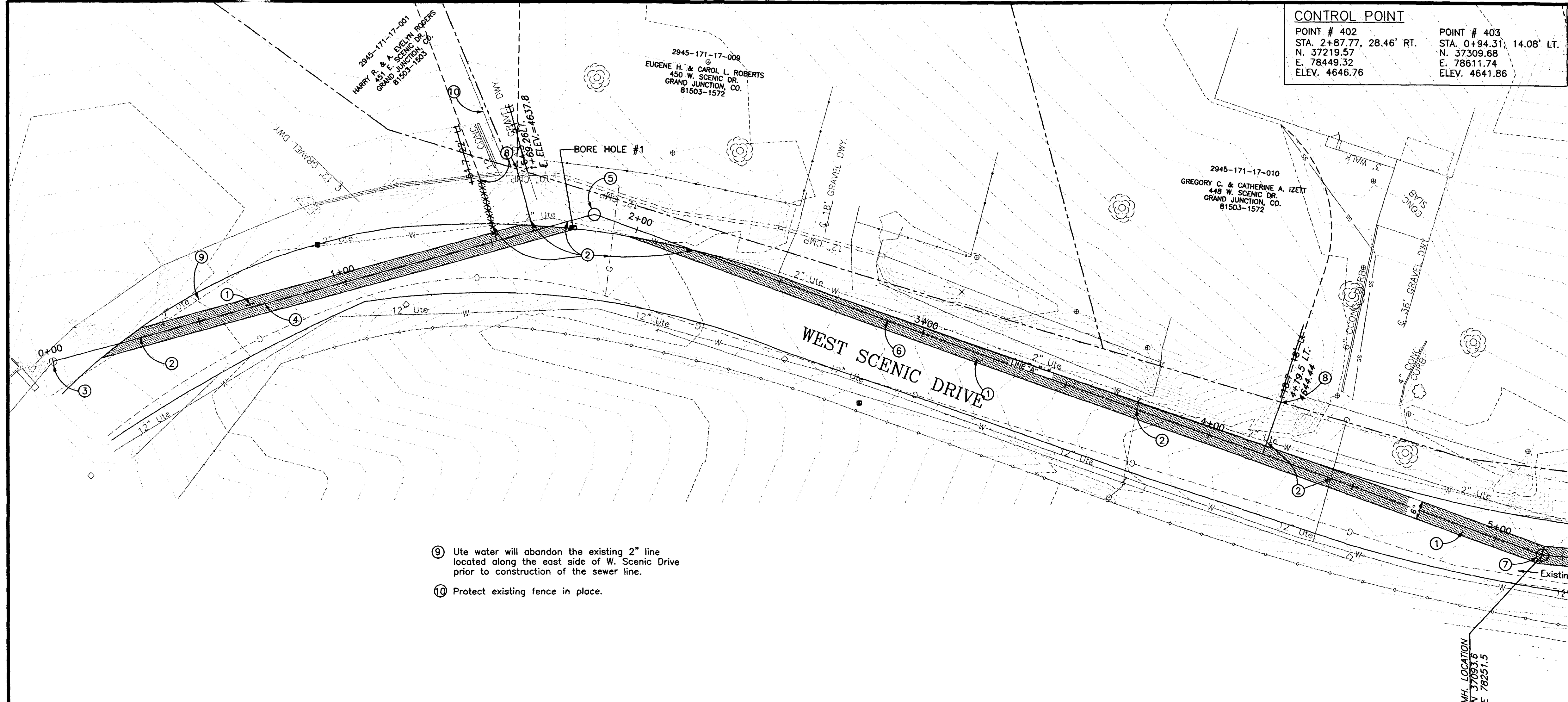


CONTROL POINT	
POINT # 402 STA. 2+87.77, 28.46' RT. N. 37219.57 E. 78449.32 ELEV. 4646.76	POINT # 403 STA. 0+94.31, 14.08' LT. N. 37309.68 E. 78611.74 ELEV. 4641.86

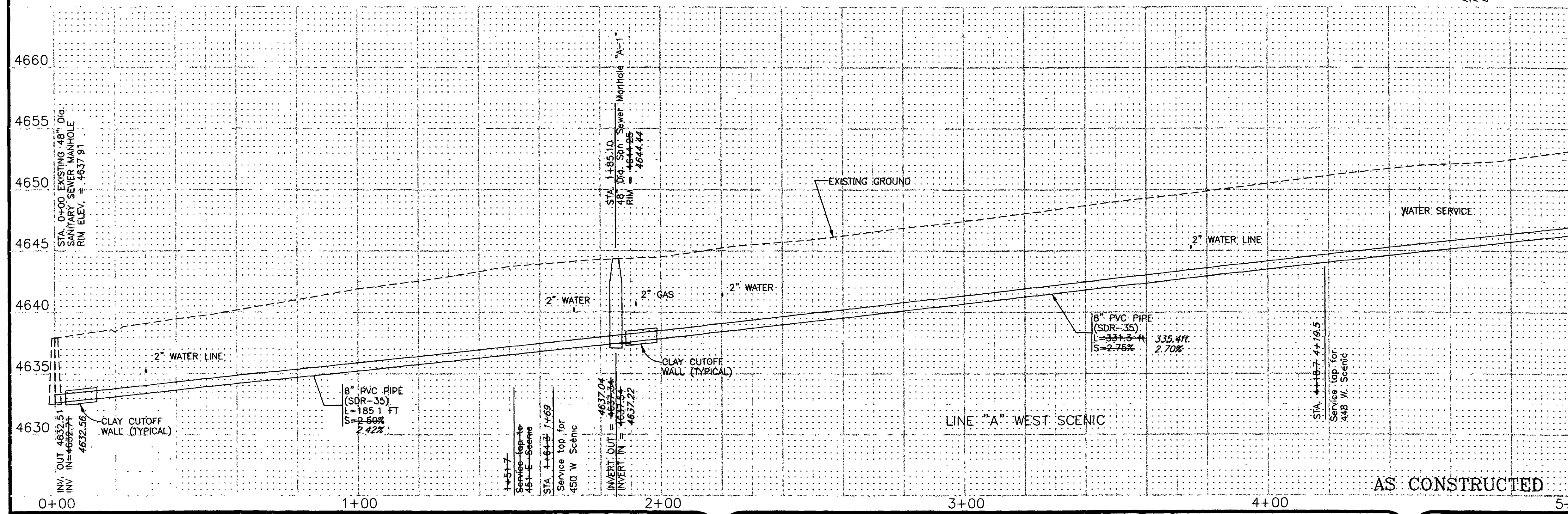


CONSTRUCTION NOTES:

- ① 202.00 Asphalt removal. Jackhammer or wheelcut as necessary. Remove pavement to the limits shown on the plans.
- 304.0 Aggregate Base Course (Class 6) (6" Depth). Compact base course to 95% AASHTO T-180. Subgrade shall be compacted to 95% AASHTO T99
- 401.0 Hot Bituminous Asphalt patch (Grading C, 75 Blow Marshall (4" depth) Pavement shall be applied in two 2" lifts. Compact asphalt to 92%-96% of maximum theoretical density CP51-96 (City of Grand Junction standard detail C-27)
- ② Notify Ute Water, Xcel Energy, Qwest Communications and/or AT&T Broadband 48 hours prior to excavations that will expose water lines (Ute), gas or electric lines (Xcel), telephone lines (Qwest) or cable TV lines (AT&T).
- ③ 210.00 Connect proposed 8" PVC sewer line to existing manhole. Contractor shall remove existing stub from manhole and place new sewer line into existing manhole refitting existing PSX gasket to new pipe. All work shall be paid for under bid item "Connect 8" PVC sewer to Existing Manhole".
- 102.11 Clay cutoff wall shall be placed 10' upstream of existing MH. Cutoff wall shall extend from 6" below to 6" above imported backfill material for the full width of the trench. If native material is not suitable, the contractor shall import material in accordance with section 103.10 of the Standard Contract Documents.
- ④ 102.90 8" PVC pipe, SDR-35 L=185.1LF. Backfill trench with native materials meeting City specification 103.16. All sewer lines must be tested in accordance with the technical specifications of the City of Grand Junction and approved before paving.
- ⑤ 102.11 48" Sanitary Sewer Manhole (MH-A1) (1EA) (N37238.01, E78554.26) (Apply epoxy coating to invert of new manhole per section 102.11 of the Standard Contract Documents) (All inlets and outlets to be fitted with PSX gaskets) (See City of Grand Junction standard detail SS-02)
- 102.11 Clay cutoff wall shall be placed 10' upstream of new MH. Cutoff wall shall extend from 6" below to 6" above imported backfill material for the full width of the trench. If native material is not suitable, the Contractor shall import material in accordance with Section 103.10 of the Standard Contract Documents.
- ⑥ 102.90 8" PVC pipe, SDR-35, L=331.3 L.F. Backfill trench with native materials meeting City specification 103.16. All sewer lines must be tested in accordance with the technical specifications of the City of Grand Junction and approved before paving.
- ⑦ 102.11 48" Sanitary Sewer Manhole (MH-A2) (1EA) (N37095.64, E78251.5) (Apply epoxy coating to invert of new manhole per section 102.11 of the Standard Contract Documents) (All inlets and outlets to be fitted with PSX gaskets) (See City of Grand Junction standard detail SS-02)
- 102.12 Clay cutoff wall shall be placed 10' upstream of new MH. Cutoff wall shall extend from 6" below to 6" above imported backfill material for the full width of the trench. If native material is not suitable, the contractor shall import material in accordance with Section 103.10 of Standard Contract Documents.
- ⑧ 102.90 All service line connections to the new PVC sewer main shall be accomplished with full body PVC wye fittings, 4" SDR-35 PVC pipe, and 45° bends. Tapping saddles will not be allowed. 4" service line shall be extended at a 1% maximum slope. Glue cap end of service line at locations shown on the plan and mark end of pipe with steel fence post driven 18" below pipe bed and cut off 12" below surface elevation. Contractor shall have the end of each service located horizontally by a licensed surveyor. The Contractor shall reference the end of service prior to backfilling.



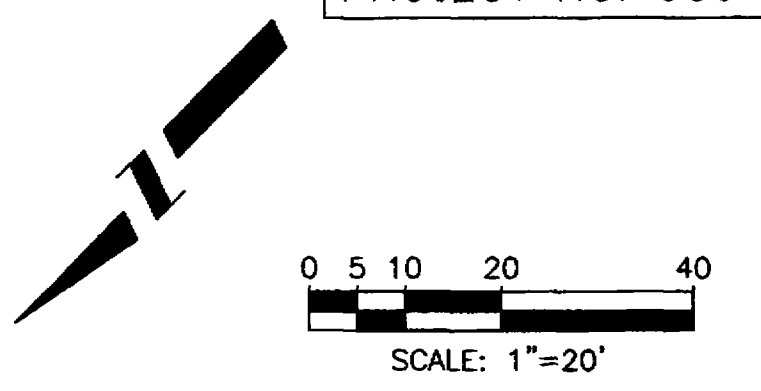
- ⑨ Ute water will abandon the existing 2" line located along the east side of W. Scenic Drive prior to construction of the sewer line.
- ⑩ Protect existing fence in place.



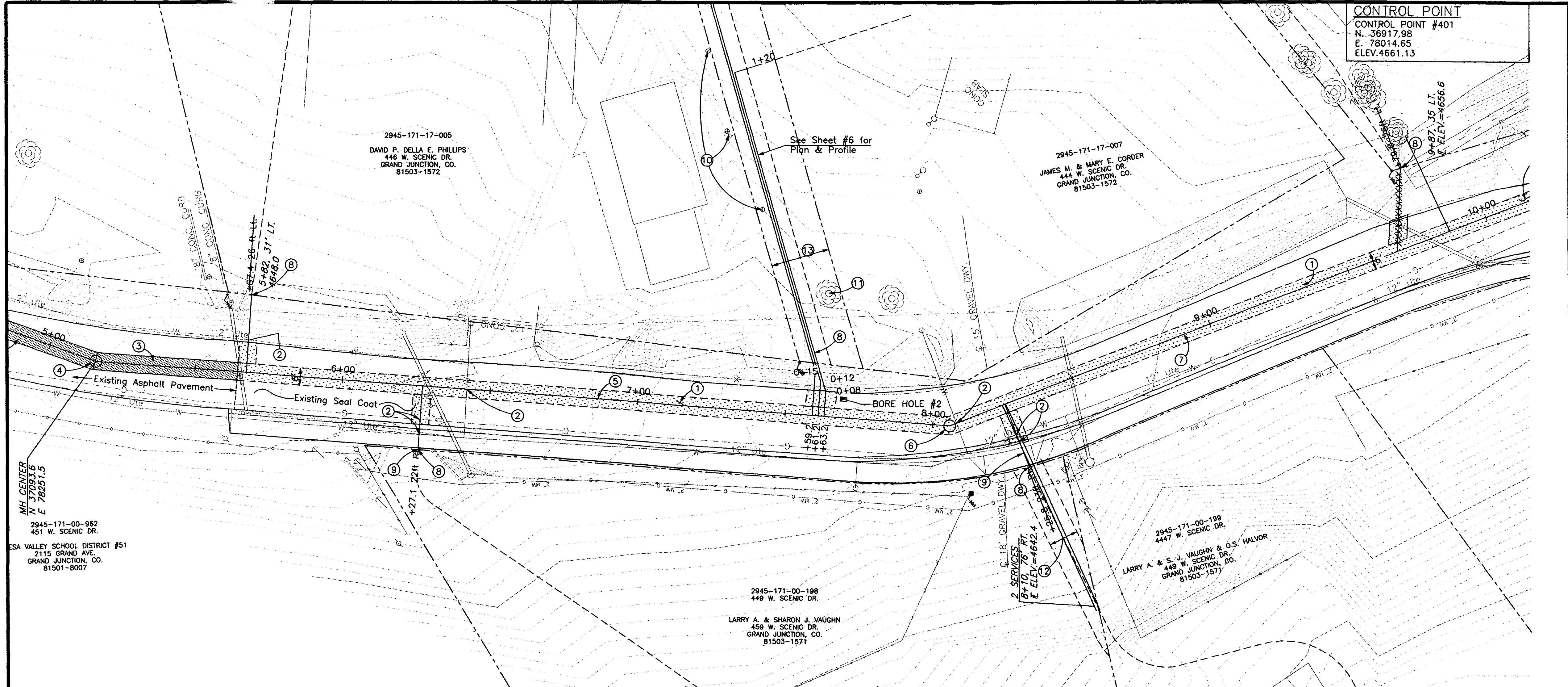
REVISION	DESCRIPTION	DATE	DRAWN BY	DATE	SCALE
REVISION			L. MARTIN	2/02	PLAN 1"=20' PROFILE 1"=5'
REVISION			J.S.	2/02	
REVISION			S.B.G.	2/02	
REVISION					

DEPARTMENT OF PUBLIC WORKS AND UTILITIES
ENGINEERING AND TECHNICAL SERVICES DIVISIONS
CITY OF GRAND JUNCTION, COLORADO

WEST SCENIC SEWER IMPROVEMENT DISTRICT
SANITARY SEWER PLAN & PROFILE
LINE "A" STA. 0+00 to STA. 5+16

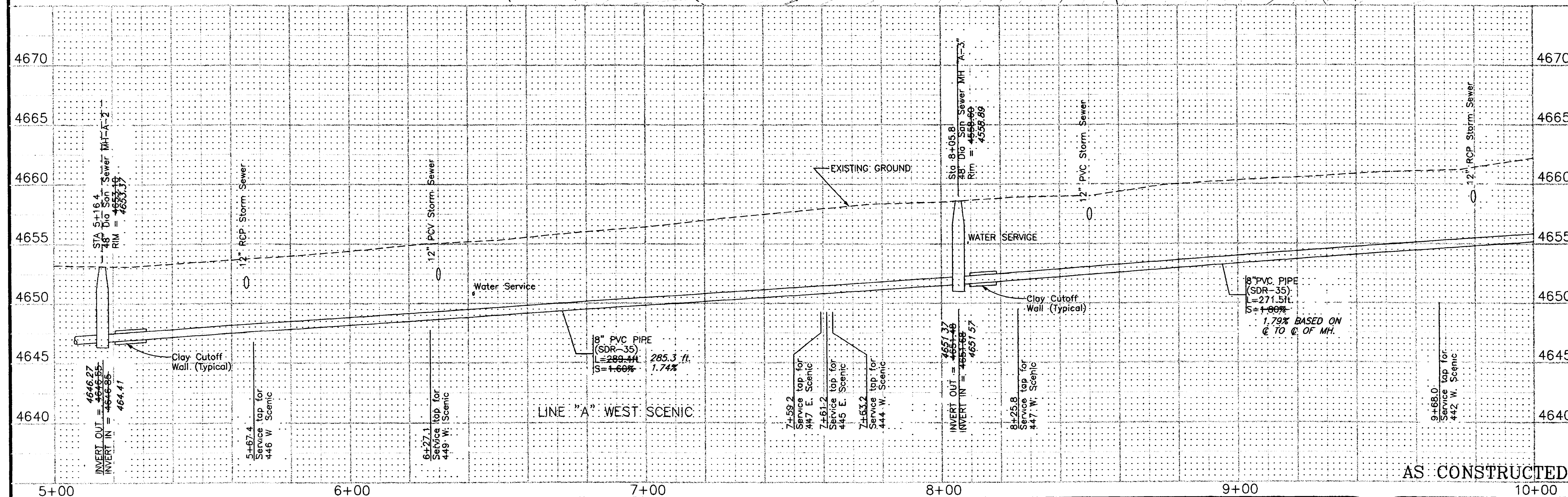


CONTROL POINT
 CONTROL POINT #401
 N. 36917.98
 E. 78014.65
 ELEV. 4661.13



CONSTRUCTION NOTES:

- ① 202.00 Removal of existing double penetration seal coat shall not be paid for directly but shall be included in the bid item "8" PVC sewer line"
- ② Notify Ute Water, Xcel Energy, Qwest Communications, and /or AT&T Broadband 48 hours prior to excavations that will expose water lines (Ute), gas or electric lines (Xcel), telephone (Qwest) or cable TV lines (AT&T).
- ③ 202.00 Asphalt removal. Jackhammer or wheelcut as necessary. Remove pavement to the limits shown on plans.
- 304.00 Aggregate Base Course. (Class 6) (6" depth) Compact base course to 95% AASHTO T-180. Sub-grade shall be compacted to 95% AASHTO T-99.
- 401.00 Hot Bituminous Asphalt patch (Grading C, 75 Blw Marshall) (4" depth) Pavement shall be applied in 2" lifts. Compact asphalt 92%-96% of maximum theoretical density CP51-96 (See City of Grand Junction standard detail C-27)
- ④ 102.11 48" Dia Sanitary Sewer Manhole (MH-A-2) (1EA) (N37095.64 E78255.45) (Apply epoxy coating to invert of new manhole per section 102.11 of the Standard Contract Documents) (All inlets and outlets to be fitted with PSX gaskets) (See City of Grand Junction standard detail SS-02)
- 102.11 Clay cutoff wall shall be placed 10' upstream of new MH. Cutoff wall shall extend from 6" below to 6" above imported backfill material for the full width of the trench. If native material is not suitable, the Contractor shall import material in accordance with section 103.10 of the Standard Contract Documents.
- ⑤ 102.90 8" PVC pipe, SDR-35, L=289.4L.F., Backfill trench with native materials meeting City of Grand Junction specification 103.16. All sewer lines must be tested in accordance with the technical specifications of the City of Grand Junction and approved before paving.
- ⑥ 102.11 48" Sanitary Sewer Manhole (MH A-3) (1EA) (N36906.85 E78035.80) (Apply epoxy coating to invert of new manhole per section 102.11 of the Standard Contract Documents) (All inlets and outlets to be Fitted With PSX gaskets) (See City of Grand Junction standard detail SS-02)
- 102.11 Clay cutoff wall shall be placed 10' upstream of the new MH. Cutoff wall shall extend from 6" below to 6" above imported backfill material for the full width of the trench. If native material is not suitable, Contractor shall import material in accordance with Section 103.10 of the Standard Contract Documents.
- ⑦ 102.90 8" PVC pipe, SDR-35, L=271.5 L.F., Backfill trench with native materials meeting City of Grand Junction specification 103.16. All sewer lines must be tested in accordance with the technical specifications of the City of Grand Junction and approved before paving.
- ⑧ 102.90 All service line connections to the new PVC sewer main shall be accomplished with full body PVC wye fittings, 4" SDR 35 PVC pipe, and 45' bends. Tapping saddles will not be allowed. 4" service lines shall be extended at a 1% maximum slope. Glue cap end of service line at location shown on the plan and mark end of pipe with steel fence post driven 18" below pipe bed and cut off 12" below surface elevation. Contractor shall have the end of each service located horizontally by a licensed surveyor. The Contractor shall reference the end of service prior to backfilling.
- ⑨ Contractor shall bore or push 4" PVC service line under existing concrete curb and gutter and sidewalk.
- ⑩ Protect irrigation system in place.
- ⑪ Protect tree in place.
- ⑫ 10' Permanent sewer service easement.
- ⑬ 20' Temporary construction easement

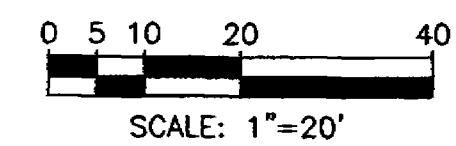
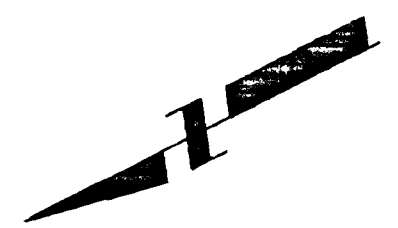


REVISION	DESCRIPTION	DATE	DRAWN BY	DATE	SCALE
REVISION Δ			L. MARTIN	2/02	PLAN 1"=20' PROFILE 1"=5'
REVISION Δ			J.S.	2/02	
REVISION Δ			S.B.G.	2/02	
REVISION Δ					

DEPARTMENT OF PUBLIC WORKS AND UTILITIES
 ENGINEERING AND TECHNICAL SERVICES DIVISIONS
 CITY OF GRAND JUNCTION, COLORADO

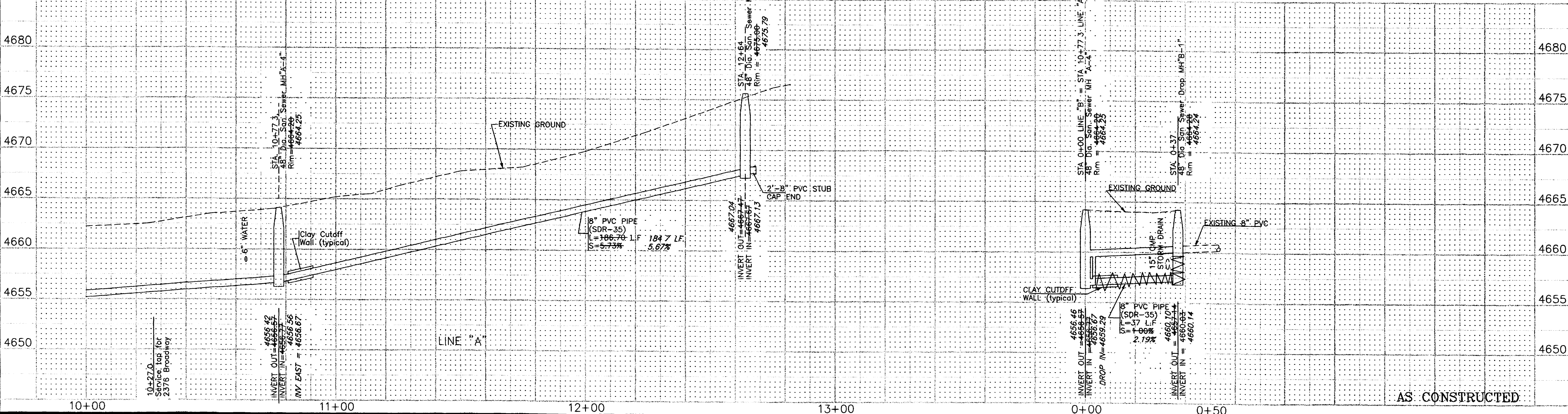
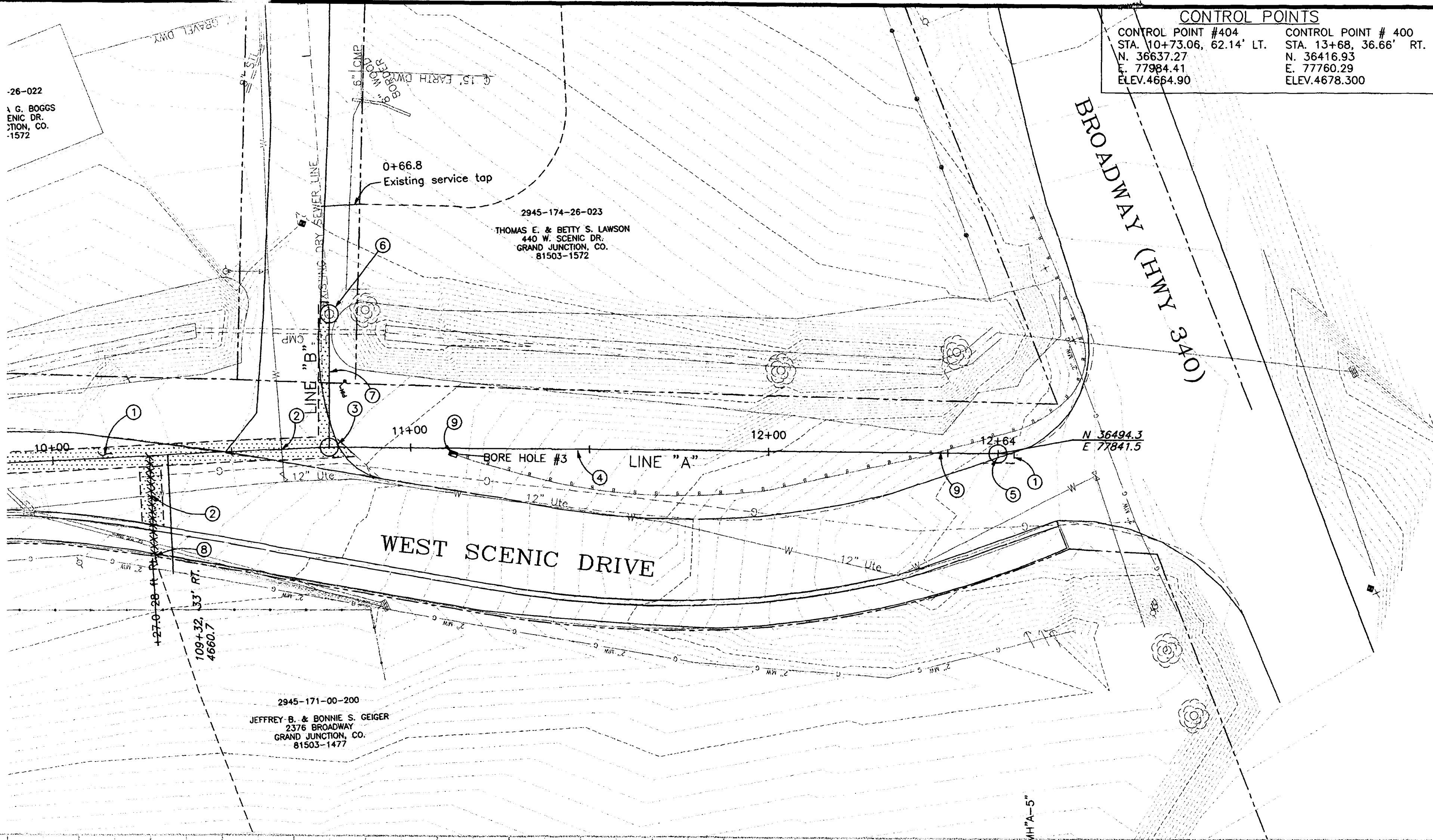
WEST SCENIC SEWER IMPROVEMENT DISTRICT
 SANITARY SEWER PLAN & PROFILE
 LINE "A" STA 5+16 TO STA. 10+00

CONTROL POINTS	
CONTROL POINT #404 STA. 10+73.06, 62.14' LT. N. 36637.27 E. 77984.41 ELEV. 4664.90	CONTROL POINT # 400 STA. 13+68, 36.66' RT. N. 36416.93 E. 77760.29 ELEV. 4678.300



CONSTRUCTION NOTES:

- ① 202.00 Removal of existing double penetration seal coat shall not be paid for directly but shall be included in the bid item "8" PVC sewer line".
- ② Notify Ute Water, Xcel Energy, Qwest Communications, and/or AT&T Broadband 48 hours prior to excavation that will expose water lines (Ute), gas or electric lines (Xcel), telephone lines (Qwest), or cable TV lines (AT&T)
- ③ 102.11 48" Sanitary Sewer Manhole (MH A-4) (1EA.) (N36658.59 E77925.89) (Apply epoxy coating to invert of new manhole per section 102.11 of the Standard Contract Documents)(All inlets and outlets to be fitted with PSX gaskets) See City of Grand Junction standard detail SS-02)
- 102.11 Clay cutoff wall shall be placed 10' upstream of new MH. Cutoff wall shall extend from 6" below to 6" above imported backfill material for the full width of the trench. If native material is not suitable, the contractor shall import material in accordance with Section 103.10 of the Standard Contract Documents.
- ④ 102.90 8" PVC pipe, SDR-35, L=186.70L.F., Backfill trench with native materials meeting City specification 103.16. All sewer lines must be tested in accordance with the technical specifications of the City of Grand junction and approved before paving.
- ⑤ 102.11 48" Sanitary Sewer Manhole (MH A-5)(1EA) (N36492.62, E77840.47) (Apply epoxy coating to invert of new manhole per section 102.11 of the Standard Contract Documents)(All inlets and outlets to be fitted with PSX gaskets) (See City of Grand Junction standard detail SS-02)
- 102.12 Clay cutoff wall shall be placed 10' upstream of new MH. Cutoff wall shall extend from 6" below to 6" above imported backfill material for the full width of the trench. If native material is not suitable, the Contractor shall import material in accordance with Section 103.10 of the Standard Contract Documents.
- ⑥ 102.11 48" Sanitary Sewer Drop Manhole (MH B-1) (1EA) (N36641.84 E77958.82) (Apply epoxy coating to invert of new manhole per section 102.11 of the Standard Contract Documents) (All inlets and outlets to be fitted with PSX gaskets) (See City of Grand Junction standard detail SS-02) Connect exist. 8"
- 102.13 Clay cutoff wall shall be placed 10' upstream of new MH. Cutoff wall shall extend from 6" below to 6" above imported backfill material full width of the trench. If the native material is not suitable, the Contractor shall import material in accordance with Section 103.10 of the Standard Contract Documents.
- ⑦ 102.90 8" PVC pipe, SDR-35, L=37 L.F., Backfill trench with native materials meeting City specification 103.16. All sewer lines must be tested in accordance with the technical specifications of the City of Grand Junction and approved before paving.
- ⑧ 102.90 All service line connections to the new PVC sewer main shall be accomplished with full body PVC wye fittings, 4" SDR 35 pipe, and 45' bends. Tapping saddles will not be allowed. 4" service line shall be extended at 1% maximum slope. Glue cap end of service line as shown on the plan and mark end of pipe with steel fence post driven 18" below pipe bed and cut off 12" below surface elevation. Contractor shall have the end of each service located horizontally by a licensed surveyor. The Contractor shall reference the end of service prior to backfilling.
- ⑨ Remove and reset existing guardrail.



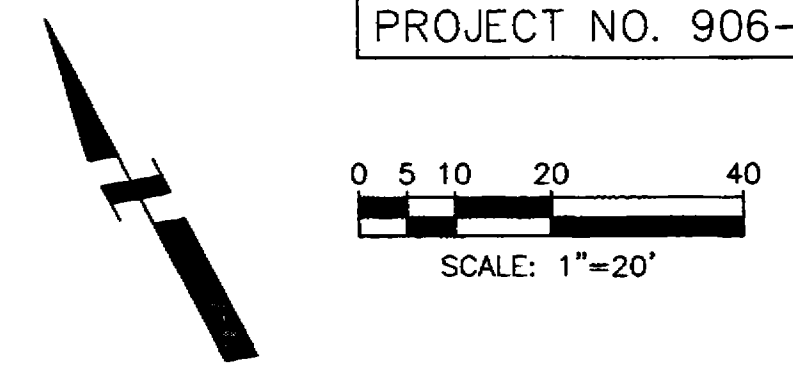
REVISION	DESCRIPTION	DATE
REVISION Δ		
REVISION Δ		
REVISION Δ		

DRAWN BY	L. MARTIN	DATE	2/02
DESIGNED BY	J.S.	DATE	2/02
CHECKED BY	S.B.G.	DATE	2/02
APPROVED BY		DATE	

SCALE		
PLAN	1"=20'	PROFILE
HORIZ.	1"=20'	HORIZ.
VERT.	1"=5'	

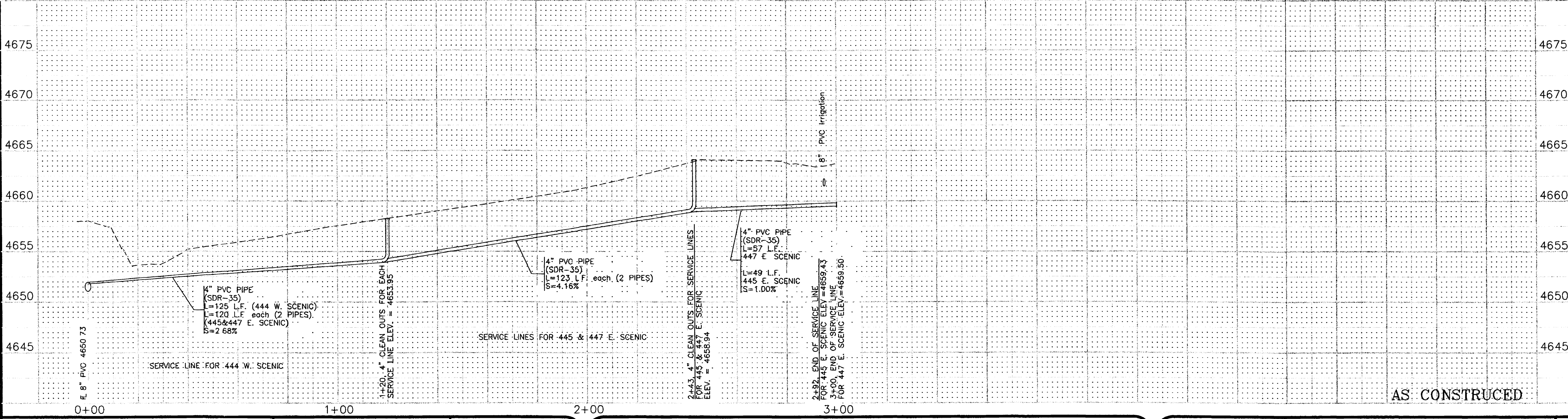
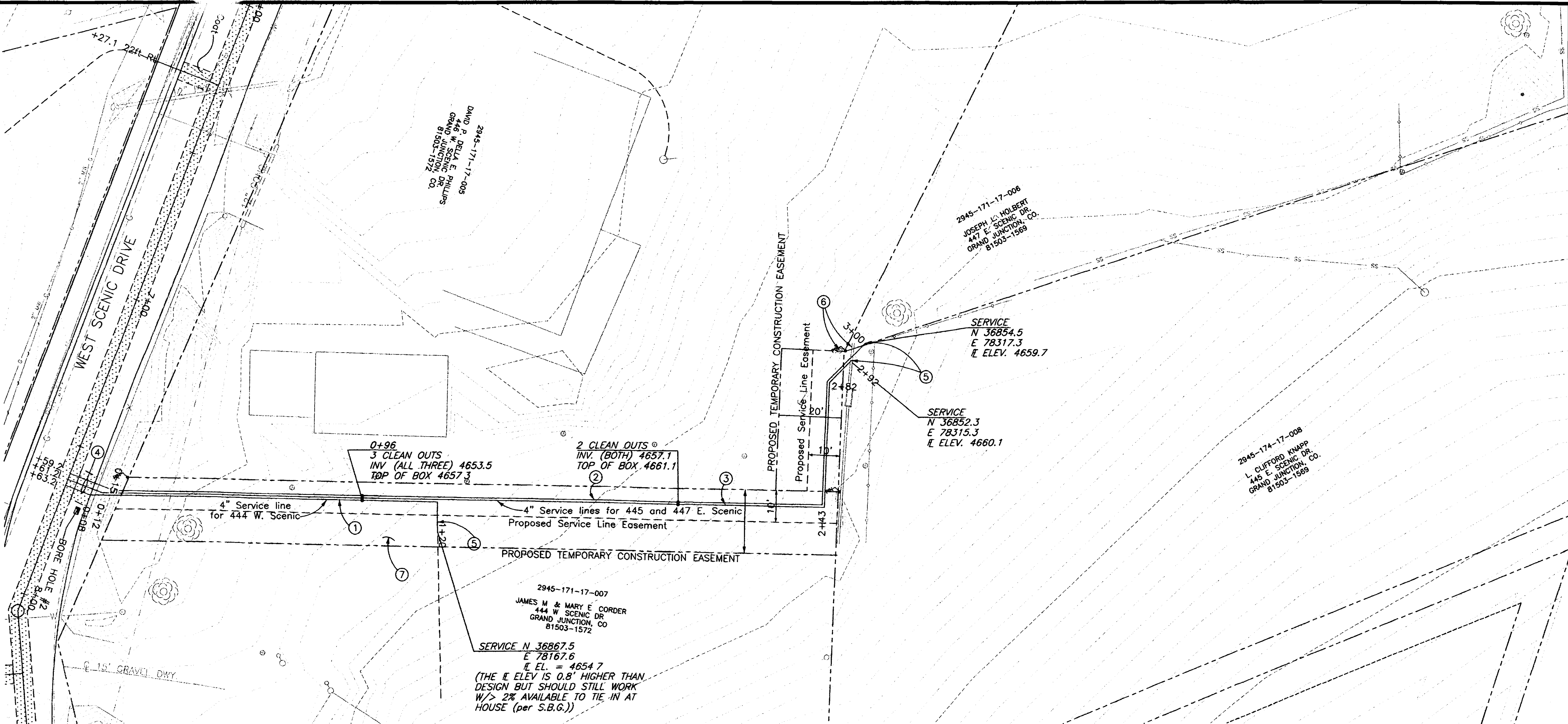
DEPARTMENT OF PUBLIC WORKS AND UTILITIES
ENGINEERING AND TECHNICAL SERVICES DIVISIONS
CITY OF GRAND JUNCTION, COLORADO

WEST SCENIC SEWER IMPORVEMENT DISTRICT
SANITARY SEWER PLAN & PROFILE
LINE "A" STA. 10+00 to STA. 12+82.1
LINE "B" STA. 0+00 to STA. 0+31



CONSTRUCTION NOTES:

- ① 102.90 4" PVC pipe, SDR-35, L=125 L.F., Service line for 444 W. Scenic. Backfill common trench with native materials meeting City specification 103.16
- ② 102.90 4" PVC pipe, SDR-35, L=300 L.F., Service line for 447 E. Scenic. Backfill common trench with native materials meeting City specification 103.16
- ③ 102.90 4" PVC pipe, SDR-35, L=292 L.F., Service line for 445 E. Scenic. Backfill common trench with native materials meeting City specification 103.16
- ④ 102.90 All service line connections to the new PVC sewer main shall be accomplished with full body PVC wye fittings, 4" SDR-35 pipe, and 45° bends. Tapping saddles will not be allowed.
- ⑤ 102.90 Glue cap at end of service line at location as shown on the plan and mark end of pipe with steel fence post driven 18" below pipe bed and cut off 12" below surface elevation. Contractor shall have each service located horizontally by a licensed surveyor. The Contractor shall reference the end of service prior to backfilling.
- ⑥ Protect existing utilities / irrigation ditches and lines in place.
- ⑦ Remove and replace sod +/- 5,500 S.F.



AS CONSTRUCTED

REVISION	DESCRIPTION	DATE

DRAWN BY J. MARTIN DATE 2/02
 DESIGNED BY J. S. DATE 2/02
 CHECKED BY S.B.G. DATE 2/02
 APPROVED BY _____ DATE _____

SCALE
 PLAN 1"=20'
 PROFILE 1"=5'
 HORIZ. 1"=20' HORIZ. 1"=20'
 VERT. 1"=5'

DEPARTMENT OF PUBLIC WORKS AND UTILITIES
 ENGINEERING AND TECHNICAL SERVICES DIVISIONS
 CITY OF GRAND JUNCTION, COLORADO

WEST SCENIC SEWER IMPORVEMENT DISTRICT
 SERVICE LINE PLAN & PROFILE
 SERVICE LINES FOR 444 W.SCENIC & 445&447 E.SCENIC