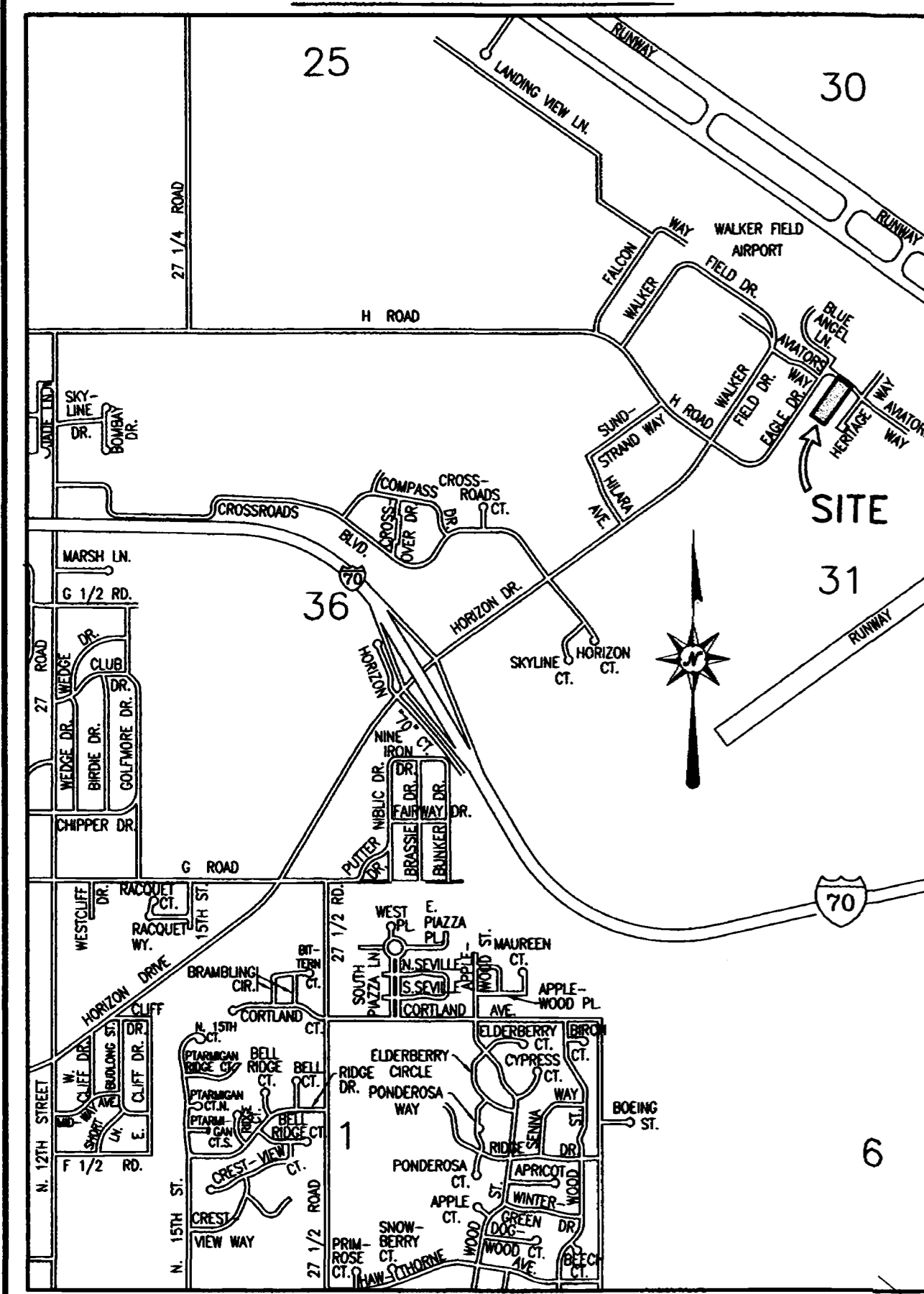


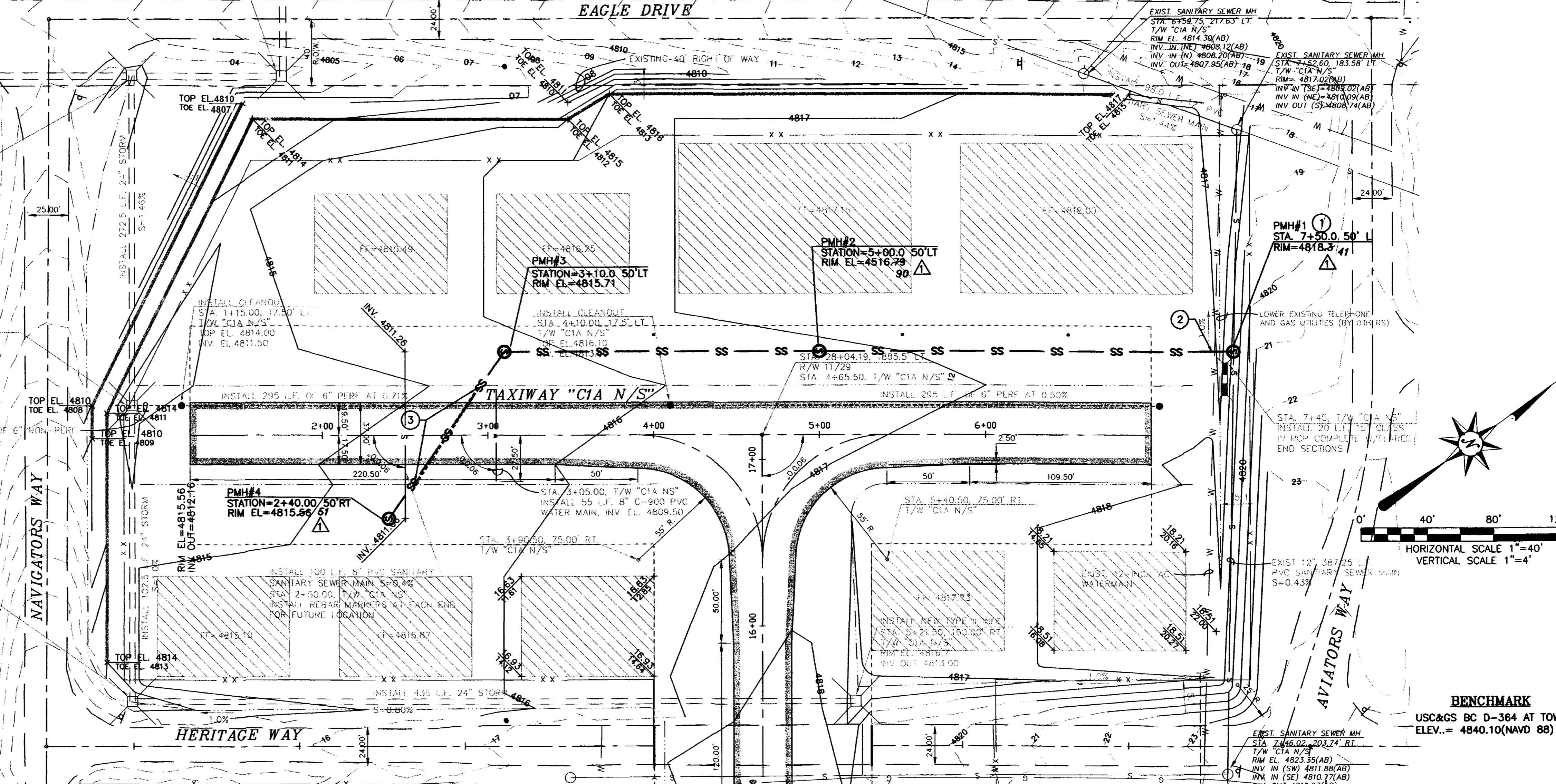
VICINITY MAP



INSTALL NEW TYPE III INLET
 STA. 0+85.00, 216.40' RT
 T/W "CIA N/S"
 RIM EL. 4802.5
 INV. IN 18" STORM (E) 4798.00
 INV. IN 12" STORM (R) 4784.67
 INV. OUT 4784.64

INSTALL NEW TYPE II INLET
 STA. 0+85.00, 17.5' LT
 T/W "CIA N/S"
 RIM EL. 4813.20
 INV. IN 4808.30
 INV. OUT 802.00

INSTALL NEW TYPE III INLET
 STA. 0+85.00, 160.00' RT
 T/W "CIA N/S"
 RIM EL. 4813.5
 INV. IN 4809.52
 INV. OUT 4809.32



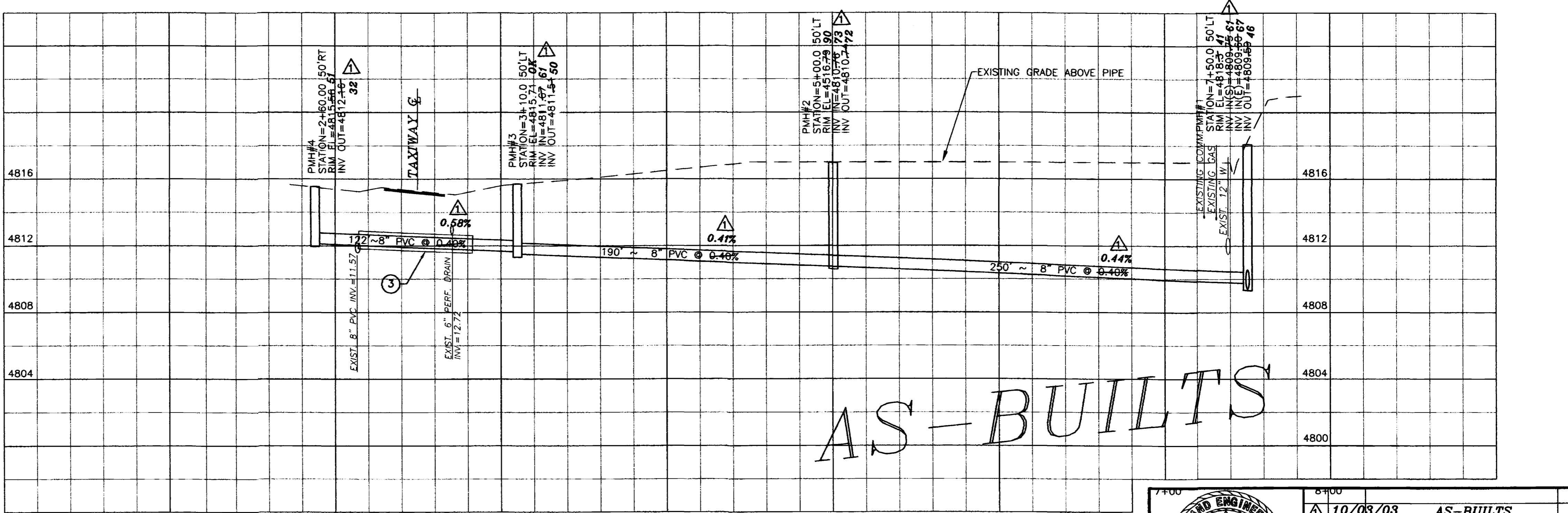
- GENERAL NOTES:**
- CONSTRUCTION AND CONTRACTOR FIELD AREAS SHALL BE LIMITED TO AN AREA AGREED UPON WITH THE WALKER FIELD AIRPORT AUTHORITY (OWNER).
 - IT SHALL BE THE CONTRACTOR'S RESPONSIBILITY TO PROTECT AND PRESERVE ALL EXISTING PAVEMENT, CURB & GUTTER, LANDSCAPING AND OTHER EXISTING IMPROVEMENTS NOT DESIGNATED FOR REMOVAL OR REPLACEMENT. ANY SUCH EXISTING IMPROVEMENTS DAMAGED BY THE CONTRACTOR'S OPERATION SHALL BE REPLACED AT NO COST TO THE OWNER.
 - THE CONTRACTOR SHALL COORDINATE ANY INTERRUPTION OF UTILITY SERVICE WITH THE CUSTOMER AND THE UTILITY COMPANY. THE CUSTOMER AND THE UTILITY COMPANY SHALL BE GIVEN 48 HOURS NOTICE FOR ANY PLANNED INTERRUPTION OF UTILITY SERVICE.
 - INSTALLATION OF NEW IMPROVEMENTS SHALL BE IN STRICT ACCORDANCE WITH REQUIREMENTS OF LOCAL ENTITIES AND IN ACCORDANCE WITH PROJECT SPECIFICATIONS.
 - THE CONTRACTOR SHALL NOTIFY THE ENGINEER IMMEDIATELY IF SITE CONDITIONS ARE ENCOUNTERED WHICH VARY FROM THOSE SHOWN ON THESE DRAWINGS.
 - THE CONTRACTOR SHALL BE RESPONSIBLE FOR PROVIDING TRAFFIC CONTROL FOR ALL CONSTRUCTION ACTIVITIES.

- IT SHALL BE THE SOLE RESPONSIBILITY OF THE CONTRACTOR TO INSURE THAT ALL WORK IS ACCOMPLISHED IN ACCORDANCE WITH OCCUPATIONAL SAFETY AND HEALTH ADMINISTRATION RULES AND REGULATIONS.
 - THE LOCATION OF UNDERGROUND UTILITIES SHOWN ON THESE PLANS IS APPROXIMATE ONLY. THE CONTRACTOR SHALL BE RESPONSIBLE FOR VERIFYING THESE LOCATIONS (HORIZONTAL & VERTICAL) OF ALL EXISTING UTILITIES AT CROSSING LOCATIONS PRIOR TO CONSTRUCTION.
 - THE UTILITY COMPANIES LISTED BELOW MAY HAVE FACILITIES PRESENT ON THIS PROJECT.
- | | | |
|-----------------------------------------|---------------|----------|
| SANITARY SEWER - CITY OF GRAND JUNCTION | TRENT PRALL | 244-1590 |
| STORM SEWER - CITY OF GRAND JUNCTION | TRENT PRALL | 244-1590 |
| WATER - CITY OF GRAND JUNCTION | TRENT PRALL | 244-1590 |
| ELECTRIC - XCEL ENERGY | JON PRICE | 244-2693 |
| GAS - XCEL ENERGY | HAROLD BALL | 244-2626 |
| TELEPHONE - QWEST | JUSTIN DILLON | 244-4721 |
| CABLE TV - BRESNAN COMMUNICATIONS | CHUCK WEIDMAN | 263-2313 |

- SANITARY SEWER NOTES:**
- ALL SANITARY SEWER PIPE SHALL BE ASTM D3034, SDR-35, UNLESS OTHERWISE NOTED.
 - ALL SEWER MAINS SHALL BE LAID USING A PIPE LASER.
 - THE CONTRACTOR IS RESPONSIBLE FOR ALL REQUIRED SEWER LINE TESTING. IT SHALL BE PERFORMED WITH THE CITY INSPECTOR PRESENT. PRESSURE TESTING WILL BE PERFORMED AFTER SUB GRADE COMPACTION AND PRIOR TO PAVING. FINAL LAMPING WILL ALSO BE PERFORMED PRIOR TO PAVING.
 - THE CONTRACTOR SHALL NOTIFY THE CITY INSPECTION 48 HOURS PRIOR TO COMMENCEMENT OF CONSTRUCTION.
 - NOT USED.
 - MANHOLES SHALL BE PER CITY OF GRAND JUNCTION STANDARDS AND SPECIFICATIONS.
 - VERIFY ELEVATION OF SERVICE LINE TIE-INS PRIOR TO CONSTRUCTION SERVICE LINE.
 - ALL MATERIAL AND WORKMANSHIP SHALL COMPLY WITH THE CITY OF GRAND JUNCTION STANDARD CONTRACT DOCUMENTS FOR CAPITAL IMPROVEMENT CONSTRUCTION.
 - THE CONTRACTOR SHALL RETAIN AN INDEPENDENT TESTING FIRM TO PERFORM QUALITY ASSURANCE PER THE CITY OF GRAND JUNCTION STANDARD CONTRACT DOCUMENTS SECTION 101.

CALL UTILITY NOTIFICATION
 CENTER OF COLORADO
1-800-922-1987

CALL 2 BUSINESS DAYS IN ADVANCE BEFORE YOU DIG, GRADE, OR EXCAVATE FOR THE MARKING OF UNDERGROUND MEMBER UTILITIES.



- CONSTRUCTION NOTES:**
- CONSTRUCT MANHOLE ON EXISTING SEWER LINE MEETING THE REQUIREMENTS OF CITY OF GRAND JUNCTION STANDARDS AND SPECIFICATIONS. MUST VERIFY FIELD ELEVATION AT THE LOCATIONS PRIOR TO CONSTRUCTION.
 - ENCASE SEWER LINE PER REQUIREMENTS OF CITY OF GRAND JUNCTION STANDARD DETAIL GU-04 IF VERTICAL CLEARANCE IS 18" OR LESS.
 - APPROXIMATE 70 FT BORING LENGTH. CONSTRUCT PER CITY OF GRAND JUNCTION STANDARD DETAIL GU-06 AND RELATED CITY OF GRAND JUNCTION STANDARDS AND SPECIFICATIONS.

AS-BUILTS

APPROVED FOR CONSTRUCTION
 CITY UTILITY ENGINEER
 DATE

ACCEPTED AS CONSTRUCTED
 CITY UTILITY ENGINEER
 DATE

ROLLAND ENGINEERING
 405 Ridge Blvd
 Grand Jct, CO 81503
 (970) 243-8300

10/09/03 **AS-BUILTS**
 File Name: \\3047\3047BASEASB.dwg/SEWER P+P

**WALKER FIELD AIRPORT
 SEWER PLAN & PROFILE
 TAXIWAY C1A N/S**

Designed	KTS	Checked	TDR	Proj#	3047	Sheet	1
Drawn	KTS	Date	7/02/03	Rev		of	1