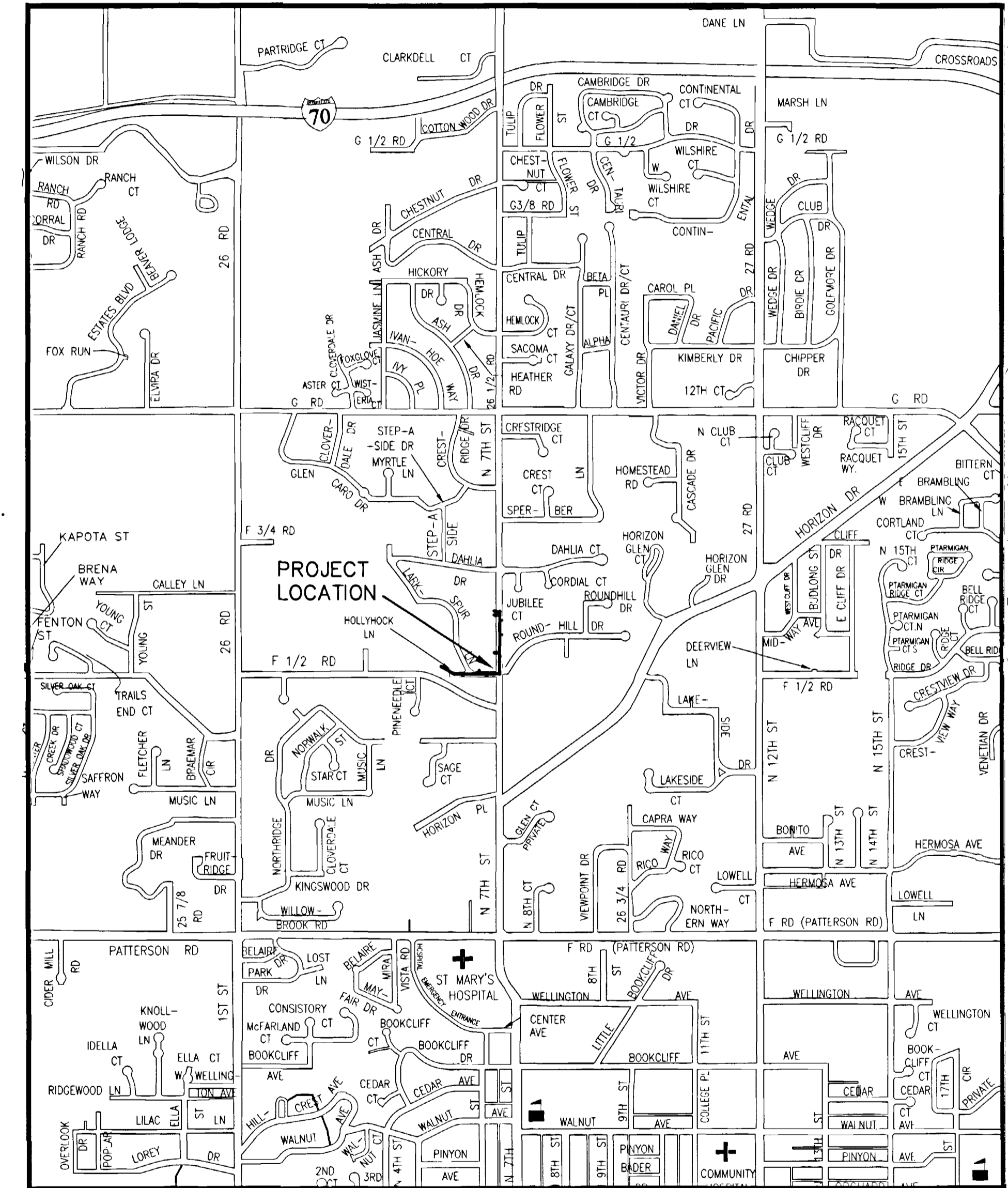


# 26 1/2 ROAD SEWER IMPROVEMENT DISTRICT APRIL, 2003

- 1 ————— Cover Sheet
- 2 ————— Standard Abbreviations, Legend, and Symbols
- 3 ————— Summary of Approximate Quantities
- 4-6 ————— Sanitary Sewer Main Plan and Profiles

VICINITY MAP



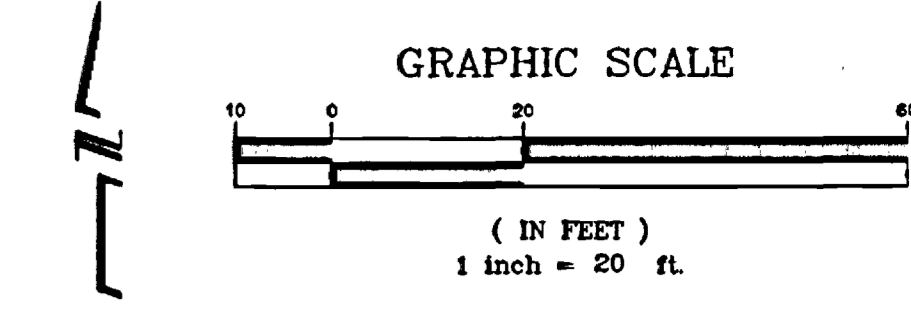
UTILITIES AND AGENCIES

AGENCY	NAME	POSITION	ROLE	MAILING ADDRESS	STREET ADDRESS	CITY, STATE	VOICE-WK	FAX
GRAND JUNCTION, CITY OF	BRET GUILLORY	PROJECT ENGINEER	PROJECT ENGINEER	250 N. 5th STREET	250 N. 5th STREET	GRAND JCT., CO 81501	(970) 256-4023	(970) 256-4022
GRAND VALLEY WATER USER'S	DICK PROCTOR	AREA MANAGER	IRRIGATION	1147 24 ROAD	1147 24 ROAD	GRAND JCT., CO 81505	(970) 242-5065	
TCI/ATT	GLENN VANCIL		CABLE TV	2502 FORESIGHT CIRCLE	2502 FORESIGHT CIRCLE	GRAND JCT., CO 81504	(970) 245-8750	(970) 245-6803
U.S. WEST/QWEST	DAN WISEMAN	ENGINEER	TELEPHONE	2524 BLICKMAN ROAD	2524 BLICKMAN ROAD	GRAND JCT., CO 81504	(970) 244-4311	(970) 240-4349
UTE WATER	DARYL MOORE	ENGINEER	WATER	PO BOX 460		GRAND JCT., CO 81502	(970) 242-7491	(970) 242-9189
XCEL	STEVE LOPEZ	PROJECT MANAGER	GAS, ELECTRIC	2538 BLICKMAN ROAD	2538 BLICKMAN ROAD	GRAND JCT., CO 81504	(970) 244-2698	(970) 244-2661

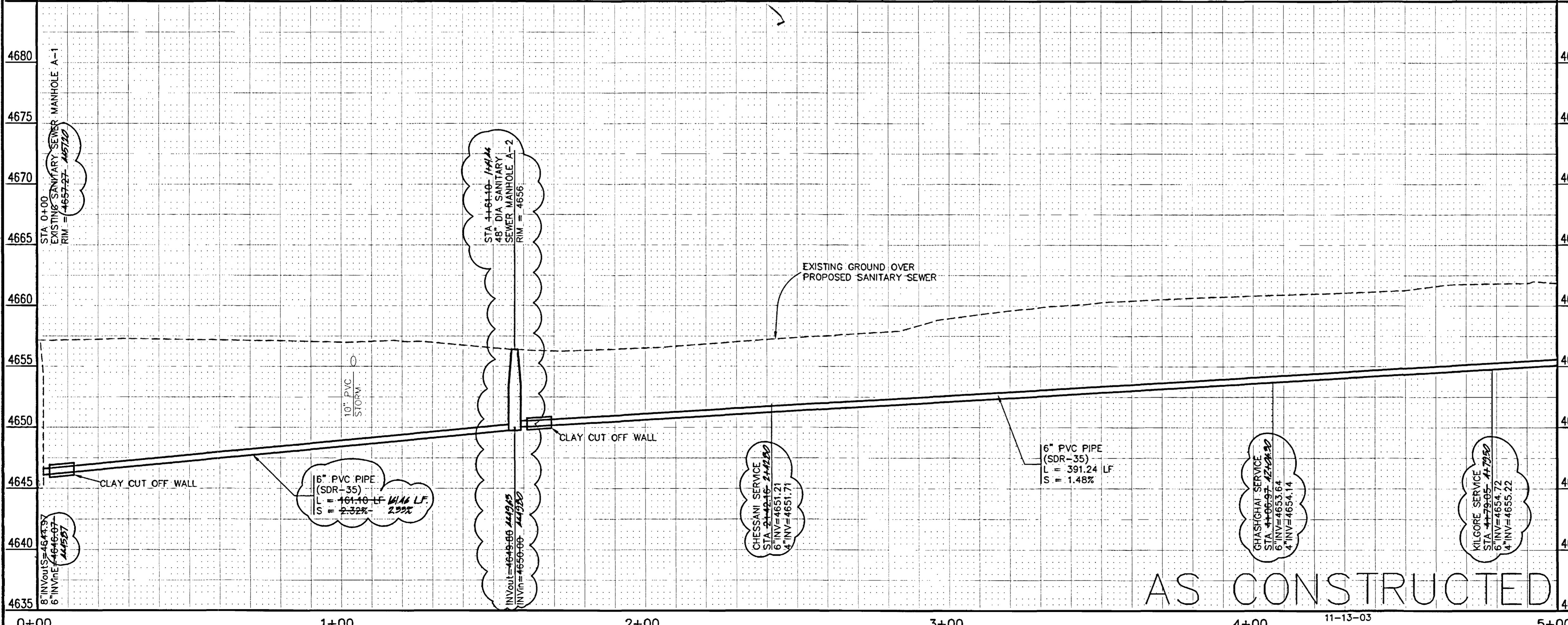
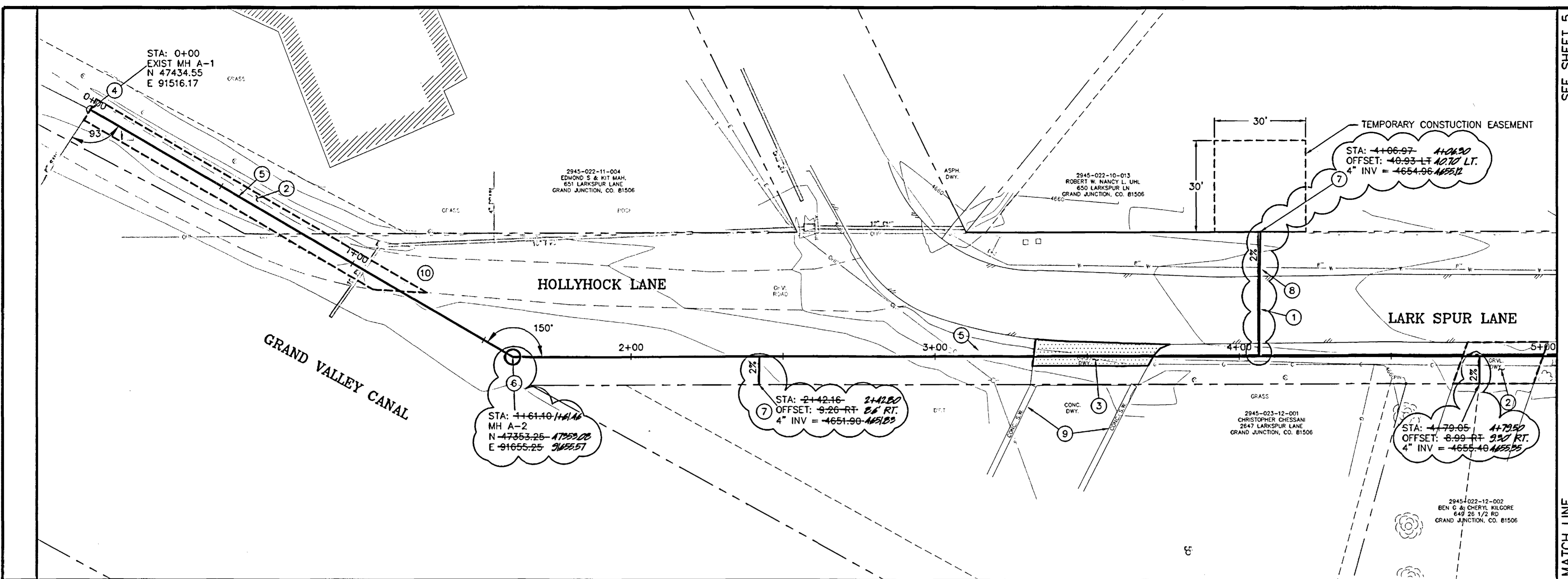
AS CONSTRUCTED  
11-13-03

*Department of Public Works & Utilities  
Engineering and Technical Services Divisions  
City of Grand Junction, Colorado*

<b>DRAWING STATUS:</b>	
○	PROGRESS
○	BID SET
○	FINAL CONSTRUCTION DRAWINGS
●	ASBUILT
APPROVED FOR CONSTRUCTION	
CITY OF GRAND JUNCTION	DATE
ACCEPTED AS CONSTRUCTED	
CITY OF GRAND JUNCTION	DATE



- CONSTRUCTION NOTES**
- 1 INSTALL MAIN LINE (6" SDR-11 HDPE) OR SERVICE LINE (4" SDR-11 HDPE) BY DIRECTIONAL BORE. INSTALLATION SHALL BE FROM MANHOLE TO MANHOLE OR FROM SEWER MAIN TO PROPERTY LINE AS SHOWN. TV INSPECTION OF EACH LINE WILL BE PROVIDED BY THE CITY OF GRAND JUNCTION. THAT IS TO BE COORDINATED BY THE CONTRACTOR.
  - 2 304.00 4" CL 6 AGGREGATE BASE COURSE. RESTORE GRAVEL DRIVE AFTER COMPLETION OF SEWER INSTALLATION.
  - 3 202.00 ASPHALT REMOVAL JACKHAMMER OR WHEELCUT AS NECESSARY. REMOVE PAVEMENT DRIVEWAY AS SHOWN GENERALLY WIDTH TO INSTALL SERVICE LINES AND MAIN LINES WILL BE 6' CENTERED ON THE PIPE.
  - 304.00 AGGREGATE BASE COURSE (CL 6) (8" DEPTH) COMPACT BASE COURSE TO 95% AASHTO T-180. SUBGRADE SHALL BE COMPACTED TO 95% AASHTO T-180.
  - 401.00 HOT BITUMINOUS ASPHALT PATCH (GR C, 75 BLOW MARSHALL) (3" DEPTH) PAVEMENT SHALL BE APPLIED IN TWO 1 1/2" LIFTS. COMPACT ASPHALT 92%-96% OF MAXIMUM THEORETICAL DENSITY CP51-96.
  - 4 210.00 CONNECT PROPOSED 6" PVC SEWER LINE TO EXISTING MANHOLE. CONTRACTOR SHALL REMOVE EXISTING 8" STUB, INSTALL 6" PVC, AND GROUT ANULAR SPACE. ALL WORK SHALL BE PAID FOR UNDER BID ITEM CONNECT PROPOSED 6" PVC SEWER TO EXISTING MANHOLE. (SEE CITY OF GRAND JUNCTION STANDARD DETAILS SS-02 AND D-12)
  - 102.11 CLAY CUT OFF WALL SHALL BE PLACED 10' UPSTREAM (EAST ONLY) OF EXIST MH. CUT OFF WALL SHALL EXTEND FROM 6" BELOW TO 6" ABOVE IMPORTED BACKFILL MATERIAL FOR THE FULL WIDTH OF THE TRENCH. IF NATIVE MATERIAL IS NOT SUITABLE, THE CONTRACTOR SHALL IMPORT MATERIAL IN ACCORDANCE WITH SECTION 103.10 OF THE STANDARD CONTRACT DOCUMENTS.
  - 5 102.90 6" PVC PIPE, SDR-35. BACKFILL TRENCH WITH NATIVE MATERIALS MEETING CITY SPECIFICATION 103.16. ALL SEWER LINES MUST BE TESTED IN ACCORDANCE WITH THE TECHNICAL SPECIFICATIONS OF THE CITY OF GRAND JUNCTION AND APPROVED BEFORE PAVING.
  - 6 102.11 48" DIA. SANITARY SEWER MANHOLE (ALL INLETS AND OUTLETS TO BE FITTED WITH PSX GASKETS) (SEE CITY OF GRAND JUNCTION STANDARD DETAIL SS-02)
  - 102.11 CLAY CUT OFF WALL SHALL BE PLACED 10' UPSTREAM OF NEW MH. CUT OFF WALL SHALL EXTEND FROM 6" BELOW TO 6" ABOVE IMPORTED BACKFILL MATERIAL FOR THE FULL WIDTH OF THE TRENCH. IF NATIVE MATERIAL IS NOT SUITABLE, THE CONTRACTOR SHALL IMPORT MATERIAL IN ACCORDANCE WITH SECTION 103.10 OF THE STANDARD CONTRACT DOCUMENTS.
  - 7 102.90 ALL SERVICE LINE CONNECTIONS TO THE NEW PVC SEWER MAIN SHALL BE ACCOMPLISHED WITH FULL BODY PVC WYE FITTINGS, 4" SDR 35 PVC PIPE, AND 45° BENDS. TAPPING SADDLES WILL NOT BE ALLOWED. GLUE CAP END OF SERVICE LINE AT LOCATION AS SHOWN ON PLAN AND MARK END OF PIPE. CONTRACTOR SHALL HAVE THE END OF EACH SERVICE LOCATED HORIZONTALLY BY A LICENSED SURVEYOR. THE CONTRACTOR SHALL REFERENCE THE END OF SERVICE VERTICALLY PRIOR TO BACKFILLING. (SEE CITY OF GRAND JUNCTION STANDARD DETAIL SS-06)
  - 8 NOTIFY AFFECTED UTILITY VENDOR 48 HOURS PRIOR TO EXCAVATIONS THAT WILL EXPOSE UTILITY LINE. THE COVER SHEET WILL HAVE A LISTING OF UTILITY VENDORS AND TELEPHONE NUMBERS.
  - 9 PROTECT IN PLACE ALL DECORATIVE AND DRIVEWAY CONCRETE SURFACES.
  - 10 HOLLYHOCK LANE IS THE ONLY ACCESS TO THE PALO PROPERTY. SEE SPECIAL PROVISIONS FOR CONSTRUCTION IN THIS AREA.



AS CONSTRUCTED

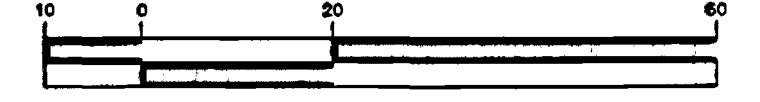
REVISION	DESCRIPTION	DATE	DRAWN BY	DATE	SCALE
REVISION 1			DPW/JCS	2003	PLAN 1"=20'
REVISION 2			SBG/JCS	2003	PROFILE 1"=20'
REVISION 3			SBG	2003	HORIZ. 1"=20'
REVISION 4					VERT. 1"=5'

DEPARTMENT OF PUBLIC WORKS AND UTILITIES  
 ENGINEERING AND TECHNICAL SERVICES DIVISIONS  
 CITY OF GRAND JUNCTION, COLORADO

26 1/2 ROAD  
 SANITARY SEWER IMPROVEMENT DISTRICT  
 STA 0+00 TO STA 5+00



GRAPHIC SCALE



( IN FEET )  
1 inch = 20 ft.

**CONSTRUCTION NOTES**

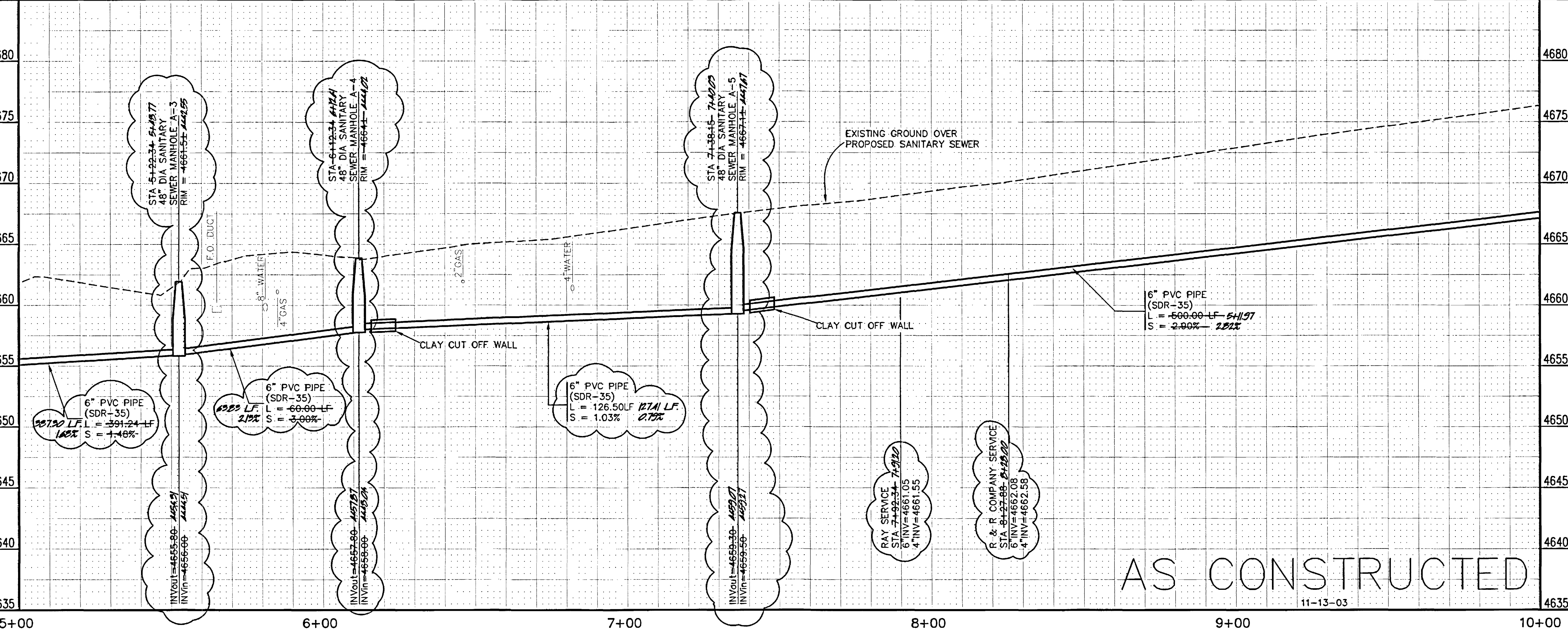
- ① INSTALL MAIN LINE (6" SDR-11 HDPE) OR SERVICE LINE (4" SDR-11 HDPE) BY DIRECTIONAL BORE. INSTALLATION SHALL BE FROM MANHOLE BY DIRECTIONAL BORE. TV INSPECTION OF EACH LINE WILL BE PROVIDED BY THE CITY OF GRAND JUNCTION. THAT IS TO BE COORDINATED BY THE CONTRACTOR.
- ② 102.90 6" PVC PIPE, SDR-35. BACKFILL TRENCH WITH NATIVE MATERIALS MEETING CITY SPECIFICATION 103.16. ALL SEWER LINES MUST BE TESTED IN ACCORDANCE WITH THE TECHNICAL SPECIFICATIONS OF THE CITY OF GRAND JUNCTION AND APPROVED BEFORE PAVING.
- ③ 102.11 48" DIA. SANITARY SEWER MANHOLE (ALL INLETS AND OUTLETS TO BE FITTED WITH PSX GASKETS) (SEE CITY OF GRAND JUNCTION STANDARD DETAIL SS-02)
- 102.11 CLAY CUT OFF WALL SHALL BE PLACED 10' UPSTREAM OF NEW MH. CUT OFF WALL SHALL EXTEND FROM 6" BELOW TO 6" ABOVE IMPORTED BACKFILL MATERIAL FOR THE FULL WIDTH OF THE TRENCH. IF NATIVE MATERIAL IS NOT SUITABLE, THE CONTRACTOR SHALL IMPORT MATERIAL IN ACCORDANCE WITH SECTION 103.10 OF THE STANDARD CONTRACT DOCUMENTS.
- ④ 102.90 ALL SERVICE LINE CONNECTIONS TO THE NEW PVC SEWER MAIN SHALL BE ACCOMPLISHED WITH FULL BODY PVC WYE FITTINGS, 4" SDR 35 PVC PIPE, AND 45° BENDS. TAPPING SADDLES WILL NOT BE ALLOWED. GLUE CAP END OF SERVICE LINE AT LOCATION AS SHOWN ON PLAN AND MARK END OF EACH SERVICE LOCATED HORIZONTALLY BY A LICENSED SURVEYOR. THE CONTRACTOR SHALL REFERENCE THE END OF SERVICE VERTICALLY PRIOR TO BACKFILLING. (SEE CITY OF GRAND JUNCTION STANDARD DETAIL SS-06)
- ⑤ NOTIFY AFFECTED UTILITY VENDOR 48 HOURS PRIOR TO EXCAVATIONS THAT WILL EXPOSE UTILITY LINE. THE COVER SHEET WILL HAVE A LISTING OF UTILITY VENDORS AND TELEPHONE NUMBERS.
- ⑥ 202.00 ASPHALT REMOVAL JACKHAMMER OR WHEELCUT AS NECESSARY. REMOVE PAVEMENT AS SHOWN. GENERALLY WIDTH TO INSTALL MAIN LINE WILL BE 6' CENTERED ON THE PIPE.
- 304.00 AGGREGATE BASE COURSE (CL 6) (8" DEPTH) COMPACT BASE COURSE TO 95% AASHTO T-180. SUBGRADE SHALL BE COMPACTED TO 95% AASHTO T-180.
- 401.00 HOT BITUMINOUS ASPHALT PATCH (GR C, 75 BLOW MARSHALL) (4" DEPTH) PAVEMENT SHALL BE APPLIED IN TWO 2" LIFTS. COMPACT ASPHALT 92%-96% OF MAXIMUM THEORETICAL DENSITY CP51-96. (SEE CITY OF GRAND JUNCTION STANDARD DETAIL C-27)

SEE SHEET 4

SEE SHEET 6

MATCH LINE

MATCH LINE



AS CONSTRUCTED

- Ⓐ BENCHMARK  
M.C.S.M. BRASS CAP  
C1/4 CORNER, SECTION 2  
T.1S R.1W, UTE P.M.  
ELEVATION = 4664.40  
N 47370.01, E 92085.20
- Ⓑ BENCHMARK  
M.C.S.M. BRASS CAP  
N 1/16 CORNER, SECTION 2  
T.1S R.1W, UTE P.M.  
ELEVATION = 4697.16  
N 48685.97, E 92085.93

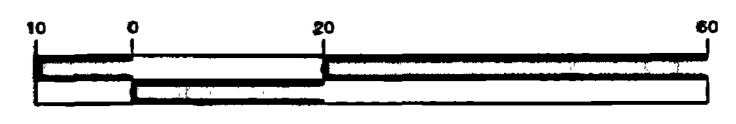
REVISION	DESCRIPTION	DATE	DRAWN BY	DATE	SCALE
REVISION			DPW/JCS	2003	PLAN 1"=20'
REVISION			DESIGNED BY	2003	PROFILE 1"=20'
REVISION			CHECKED BY	2003	HORIZ. 1"=20'
REVISION			APPROVED BY		VERT. 1"=5'

DEPARTMENT OF PUBLIC WORKS AND UTILITIES  
ENGINEERING AND TECHNICAL SERVICES DIVISIONS  
CITY OF GRAND JUNCTION, COLORADO

26 1/2 ROAD  
SANITARY SEWER IMPROVEMENT DISTRICT  
STA 5+00 TO STA 10+00



GRAPHIC SCALE



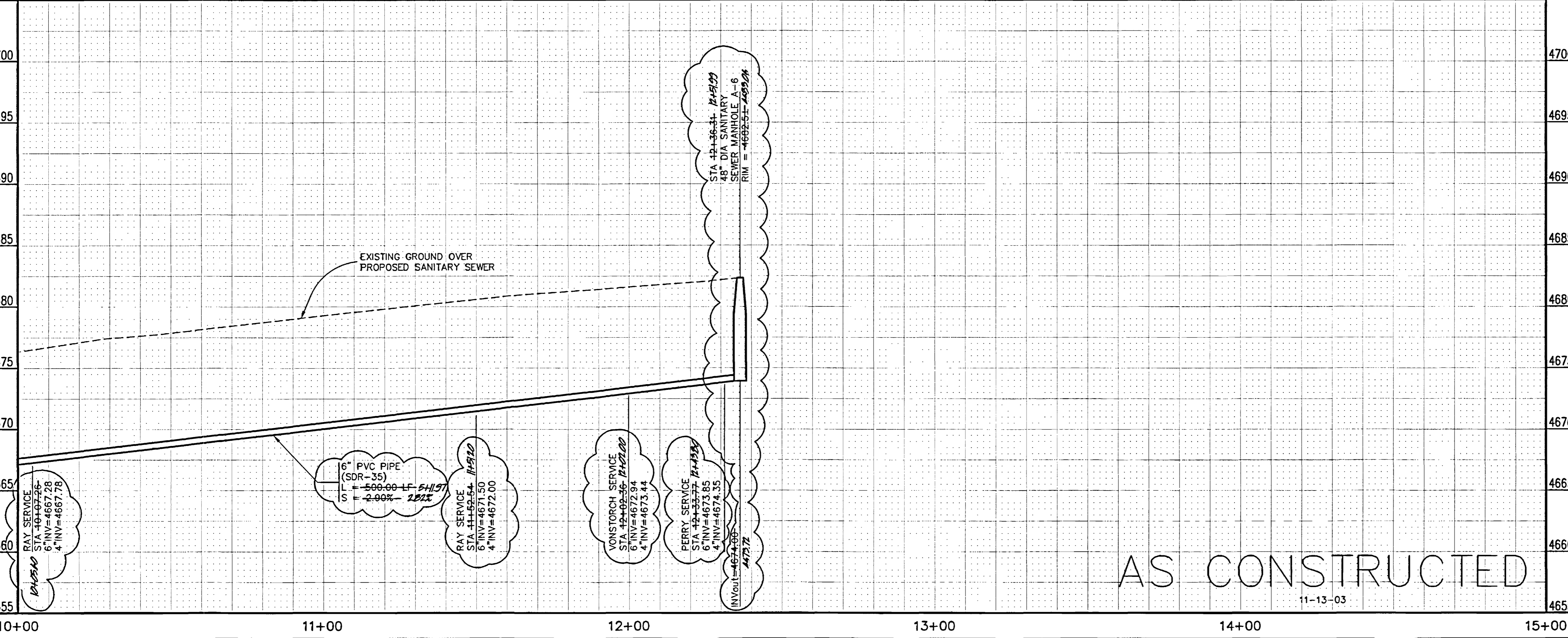
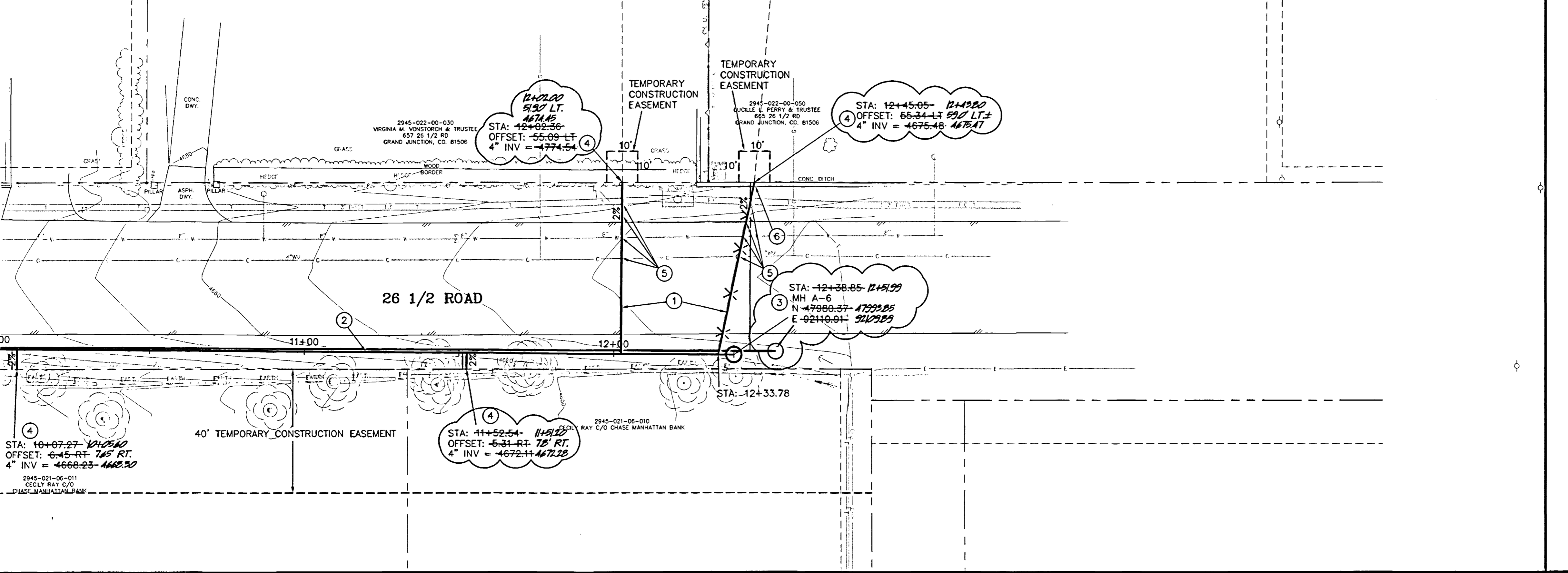
( IN FEET )  
1 inch = 20 ft.

CONSTRUCTION NOTES

- ① INSTALL MAIN LINE (6" SDR-11 HDPE) OR SERVICE LINE (4" SDR-11 HDPE) BY DIRECTIONAL BORE. INSTALLATION SHALL BE FROM MANHOLE TO MANHOLE OR FROM SEWER MAIN TO PROPERTY LINE AS SHOWN. TV INSPECTION OF EACH LINE WILL BE PROVIDED BY THE CITY OF GRAND JUNCTION. THAT IS TO BE COORDINATED BY THE CONTRACTOR.
- ② 102.90 6" PVC PIPE, SDR-35. BACKFILL TRENCH WITH NATIVE MATERIALS MEETING CITY SPECIFICATION 103.16. ALL SEWER LINES MUST BE TESTED IN ACCORDANCE WITH THE TECHNICAL SPECIFICATIONS OF THE CITY OF GRAND JUNCTION AND APPROVED BEFORE PAVING.
- ③ 102.11 48" DIA. SANITARY SEWER MANHOLE. MANHOLE SHALL HAVE A PRECAST BASE WITH AN INVERT. THE OUTLET OF THE MANHOLE SHALL BE FITTED WITH A PSX GASKET (SEE CITY OF GRAND JUNCTION STANDARD DETAIL SS-02)
- ④ 102.90 ALL SERVICE LINE CONNECTIONS TO THE NEW PVC SEWER MAIN SHALL BE ACCOMPLISHED WITH FULL BODY PVC WYE FITTINGS, 4" SDR 35 PVC PIPE, AND 45° BENDS. TAPPING SADDLES WILL NOT BE ALLOWED. GLUE CAP END OF SERVICE LINE AT LOCATION AS SHOWN ON PLAN AND MARK END OF PIPE. CONTRACTOR SHALL HAVE THE END OF EACH SERVICE LOCATED HORIZONTALLY BY A LICENSED SURVEYOR. THE CONTRACTOR SHALL REFERENCE THE END OF SERVICE VERTICALLY PRIOR TO BACKFILLING. (SEE CITY OF GRAND JUNCTION STANDARD DETAIL SS-06)
- ⑤ NOTIFY AFFECTED UTILITY VENDOR 48 HOURS PRIOR TO EXCAVATIONS THAT WILL EXPOSE UTILITY LINE. THE COVER SHEET WILL HAVE A LISTING OF UTILITY VENDORS AND TELEPHONE NUMBERS.
- ⑥ 202/608 REMOVE AND REPLACE EXISTING CONCRETE DITCH IN KIND AS NEEDED TO INSTALL NEW SEWER SERVICE

SEE SHEET 5

MATCH LINE



AS CONSTRUCTED

Ⓐ BENCHMARK  
M.C.S.M. BRASS CAP  
C1/4 CORNER, SECTION 2  
T.1S R.1W, UTE P.M.  
ELEVATION = 4664.40  
N 47370.01, E 92085.20

Ⓑ BENCHMARK  
M.C.S.M. BRASS CAP  
N 1/16 CORNER, SECTION 2  
T.1S R.1W, UTE P.M.  
ELEVATION = 4697.16  
N 48685.97, E 92085.93

REVISION	DESCRIPTION	DATE	DRAWN BY DPW/JCS DATE 2003	SCALE
REVISION			DESIGNED BY SBG/JCS DATE 2003	PLAN 1"=20'
REVISION			CHECKED BY SBG DATE 2003	PROFILE 1"=20'
REVISION			APPROVED BY _____ DATE _____	HORIZ. 1"=20'
				VERT. 1"=5'

DEPARTMENT OF PUBLIC WORKS AND UTILITIES  
ENGINEERING AND TECHNICAL SERVICES DIVISIONS  
CITY OF GRAND JUNCTION, COLORADO

26 1/2 ROAD  
SANITARY SEWER IMPROVEMENT DISTRICT  
STA 10+00 TO STA 15+00