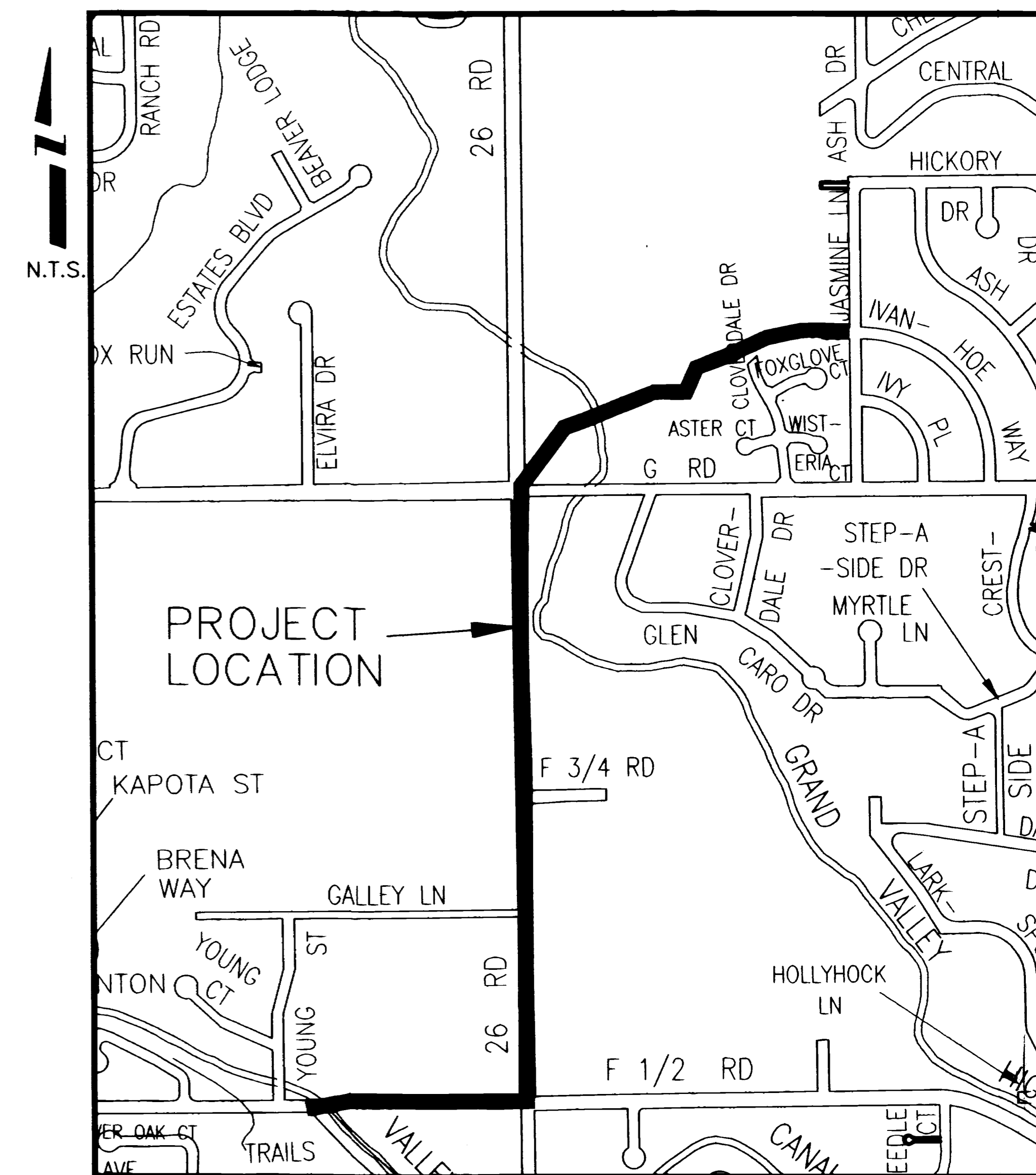


26 ROAD TRUNK LINE EXTENSION NOVEMBER, 2001

VICINITY MAP



- 1 ——— Cover Sheet
- 2 ——— Standard Abbreviations, Legend, and Symbols
- 3 ——— Summary of Approximate Quantities
- 4 ——— Sanitary Sewer Plan and Profile Sta. 0+00-9+50
- 5 ——— Sanitary Sewer Plan and Profile Sta. 9+50-19+00
- 6 ——— Sanitary Sewer Plan and Profile Sta. 19+00-29+00
- 7 ——— Sanitary Sewer Plan and Profile Sta. 29+00-36+00
- 8 ——— Sanitary Sewer Plan and Profile Sta. 36+00-44+00
- 9 ——— Sanitary Sewer Plan and Profile Sta. 44+00-53+00

*Department of Public Works & Utilities
Engineering and Technical Services Divisions
City of Grand Junction, Colorado*

AS-BUILT 12-2002

DRAWING STATUS:
 ○ PROGRESS
 ○ BID SET
 ○ FINAL CONSTRUCTION DRAWINGS
 ● ASBUILT DRAWINGS

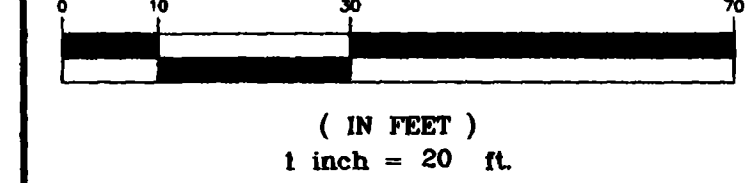
APPROVED FOR CONSTRUCTION

CITY OF GRAND JUNCTION DATE

ACCEPTED AS CONSTRUCTED

CITY OF GRAND JUNCTION DATE

GRAPHIC SCALE



CONTROL DATA

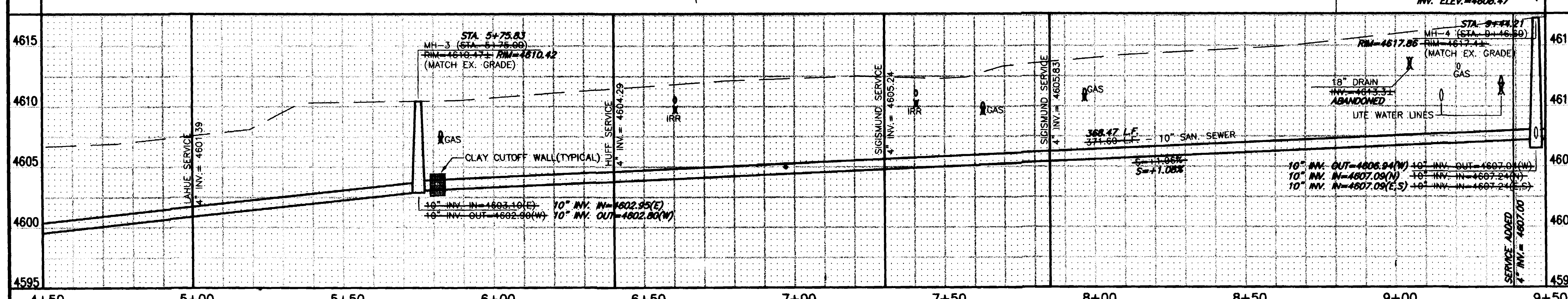
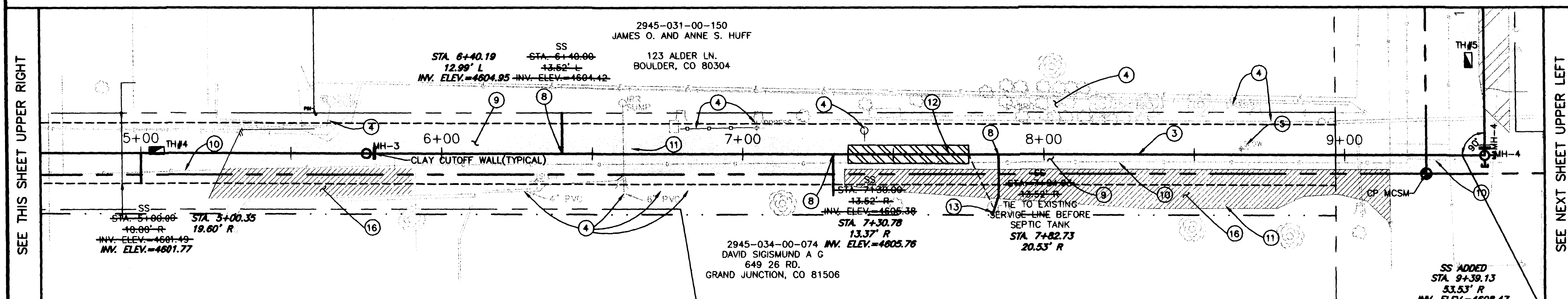
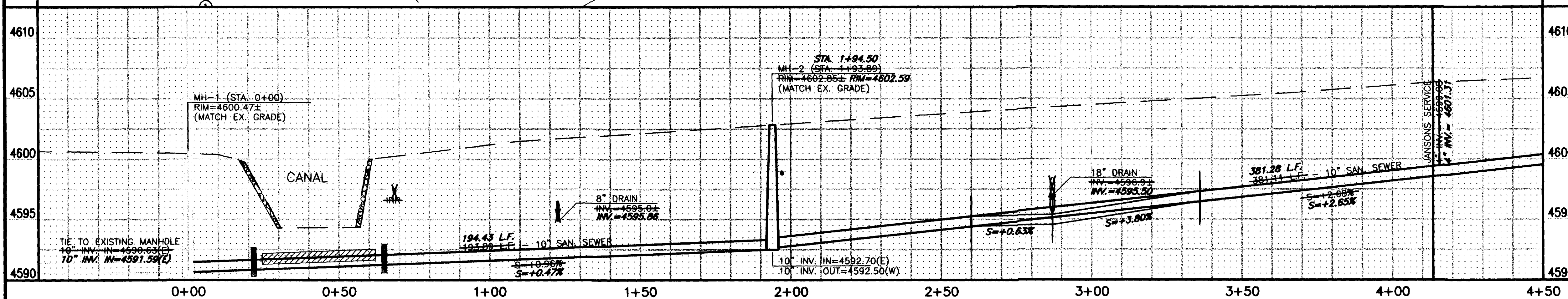
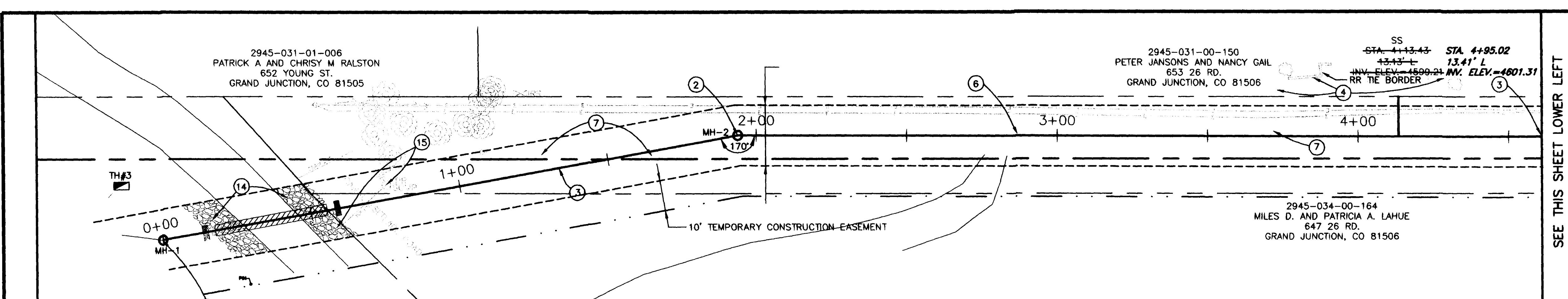
MANHOLE NUMBER	NORTHING	EASTING
MH-1	4984.7200	11042.2500
MH-2	4949.2274	11233.6243
MH-3	5018.9153	11233.6314
MH-4	5018.3785	11614.1636
	5018.6980	11614.9680
	5018.5604	11985.3361
	5017.1660	11983.3460

CONTROL POINT	NORTHING	EASTING	ELEVATION
MCSM	5011.4600	11966.2800	4617.72

CONSTRUCTION NOTES

- ① 102/104.2 TIE TO EXISTING MANHOLE. POUR INVERT TO MATCH ALIGNMENT OF NEW PIPE IN FROM THE EAST.
- ② 102/104.2 CONSTRUCT 48" DIA. DROP MANHOLE.
- ③ 102/104 INSTALL 10" SDR-35 PVC SEWER MAIN.
- ④ 107 PROTECT EXISTING IRRIGATION SYSTEMS, PLANT MATERIALS, LANDSCAPE, STRUCTURES AND FENCE IN PLACE.
- ⑤ 210 REMOVE AND RESET SIGN.
- ⑥ PROTECT EXISTING GDD PIPE IN PLACE.
- ⑦ 210 REMOVE AND RESET ± 50 LINEAL FEET OF FENCE.
- ⑧ 102/104 4" SDR-35 PVC SERVICE, INCLUDES 10"x4" FULLBODY WYE, 45° ELBOW PAID BY EACH INSTALLED. 4" SERVICE PAID BY LINEAL FOOT.
- ⑨ 202 ASPHALT REMOVAL AS SHOWN AND DISCUSSED IN SPECIAL PROVISIONS SP-11.
- 304 AGGREGATE BASE COURSE(CL-6)(6" DEPTH) COMPACT TO 95% AASHTO-199. COMPACT SUBGRADE TO 95% AASHTO-199.
- 401 HOT BITUMINOUS PAVEMENT PATCH. (DR-C, 50 BLOW MARSHALL)(3" DEPTH) PAVEMENT SHALL BE APPLIED IN 2-1.5" LIFTS.
- ⑩ XCEL ENERGY WILL RELOCATE THE EXISTING GAS LINE ± 5' TO THE SOUTH OF THE EXISTING LOCATION PRIOR TO CONSTRUCTION OF THE SEWER LINE.
- ⑪ INSTALL SPEED BUMP MODEL "EASY RIDER" MANUFACTURED BY GNR TECHNOLOGIES. INSTALL PER MANUFACTURERS RECOMMENDATION.
- ⑫ APPROXIMATE LOCATION OF EXISTING SIGSMUND NORTH LEACH FIELD.
- ⑬ TIE EXISTING SEWER TO NEW SEWER. ABANDON EXISTING SEPTIC TANK PER MESA COUNTY HEALTH DEPARTMENT.
- ⑭ CONSTRUCT CANAL CROSSING AS DESCRIBED IN SP-9.
- ⑮ REMOVE AND RESET IRRIGATION SUMP, HEADGATE STRUCTURE AND REPLACE INLET PIPE WITH SDR-35 PVC FORM HEADGATE TO SUMP.
- ⑯ 1/2" OVERLAY AREA

AS CONSTRUCTED



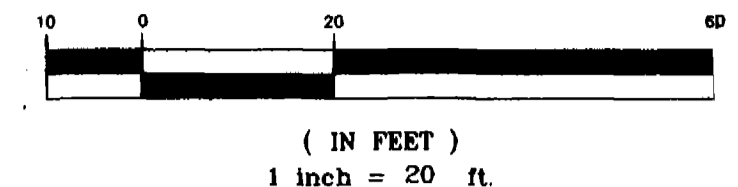
REVISION	DESCRIPTION	DATE	DRAWN BY	DATE	SCALE
REVISION			JAH	2001	PLAN 1"=20'
REVISION			SBG	2001	HORIZ 1"=20'
REVISION			SBG	2001	VERT. 1"=5'
REVISION					

DEPARTMENT OF PUBLIC WORKS AND UTILITIES
ENGINEERING AND TECHNICAL SERVICES DIVISIONS
CITY OF GRAND JUNCTION, COLORADO

26 ROAD TRUNK LINE EXTENSION
SEWER LINE PLAN AND PROFILE
STA 0+00 TO STA 9+50



GRAPHIC SCALE



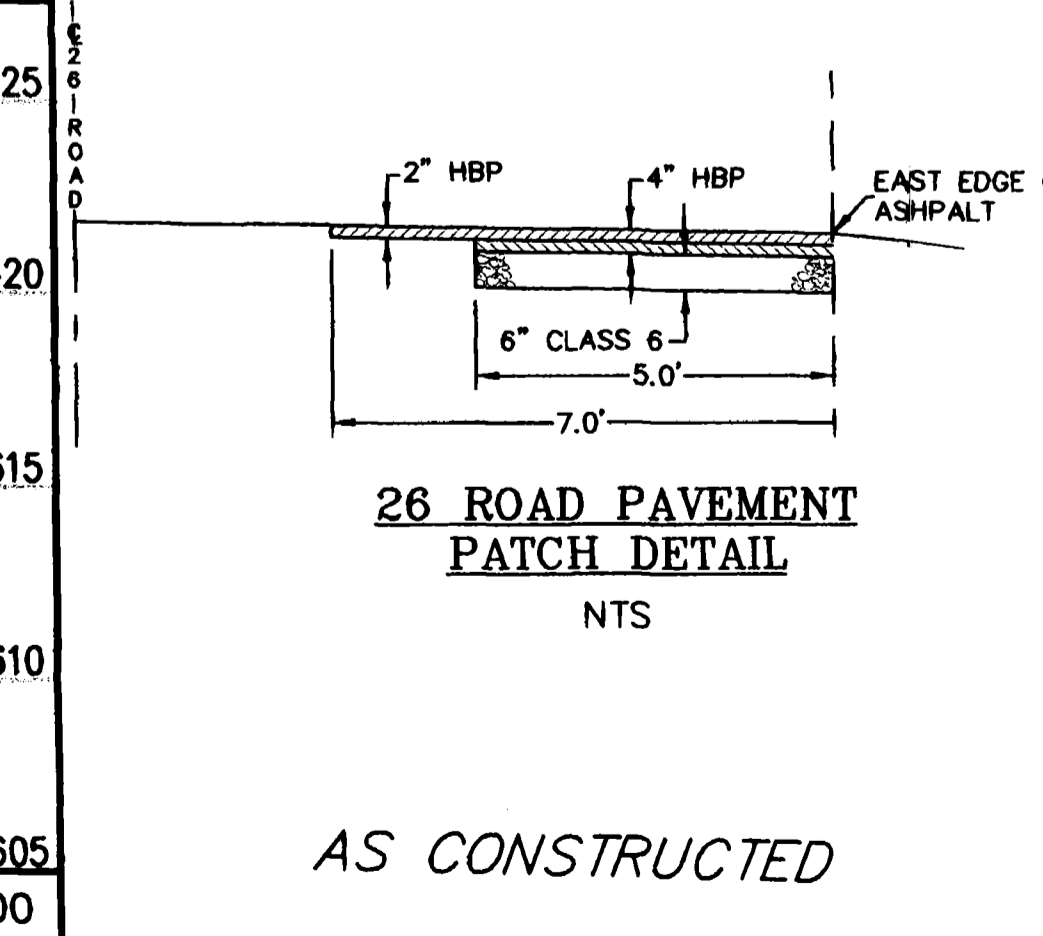
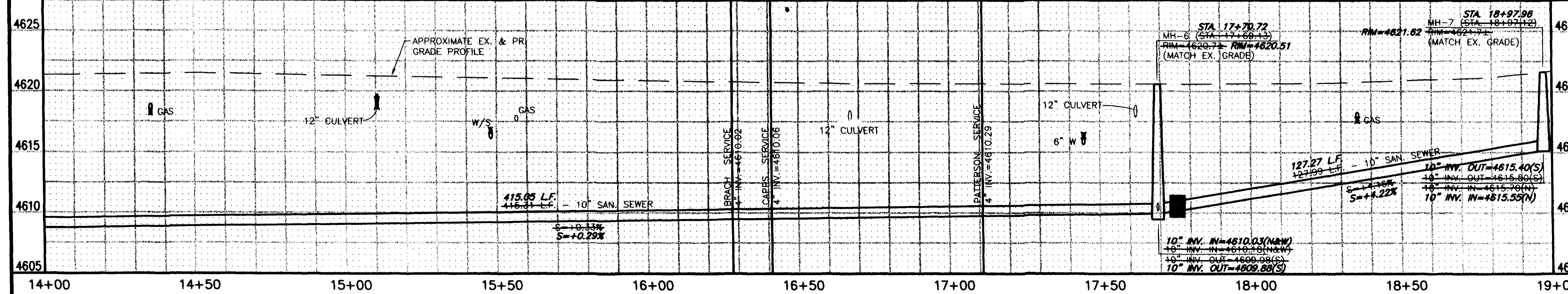
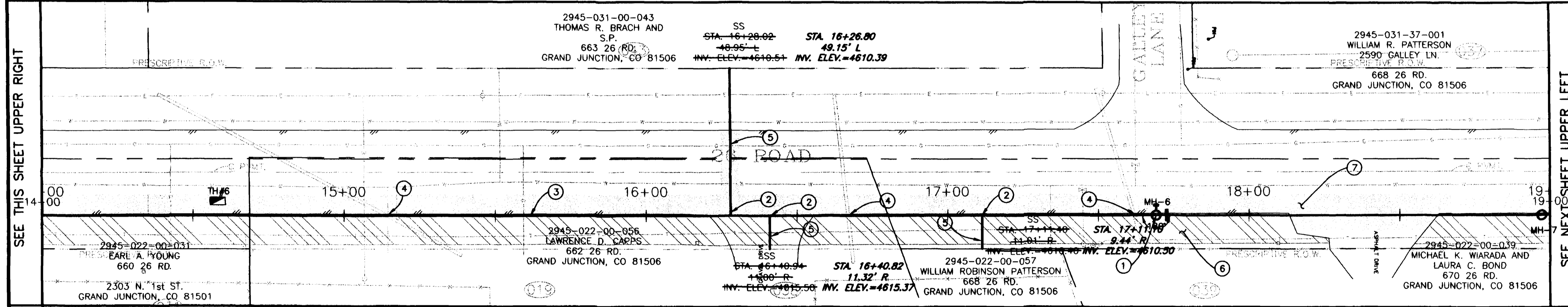
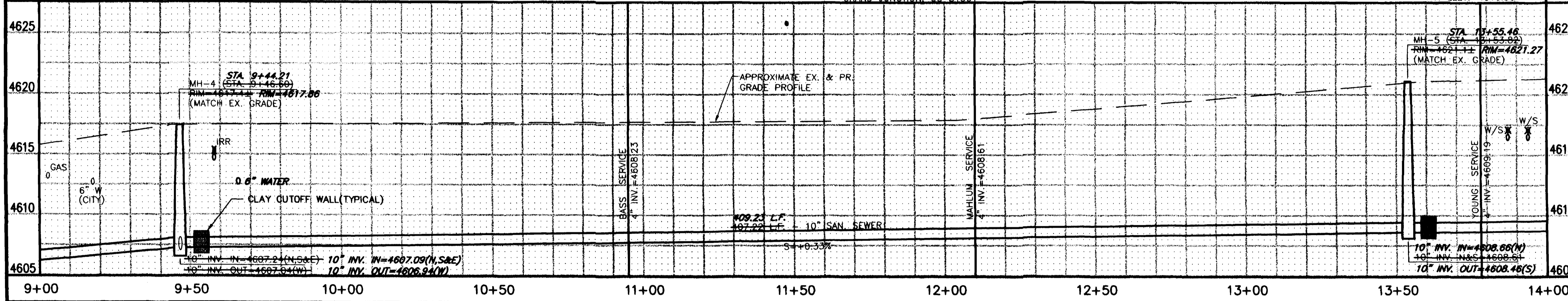
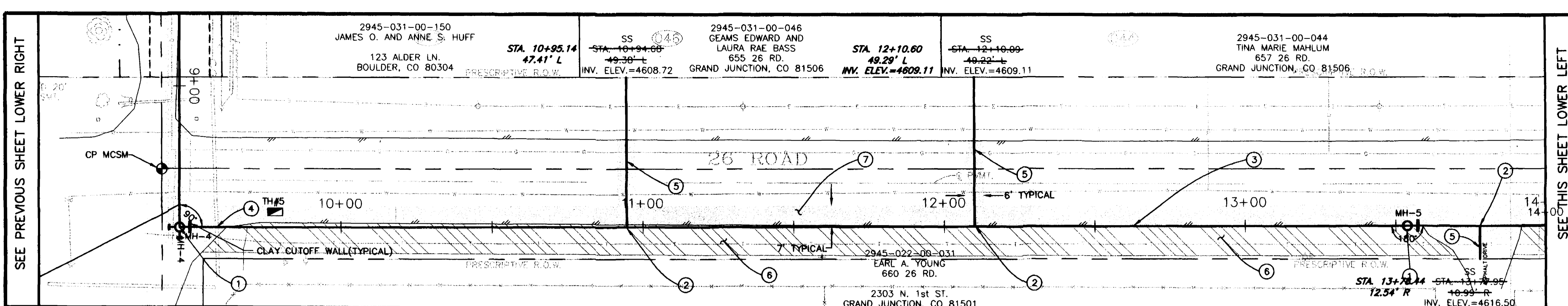
CONTROL DATA

MANHOLE NUMBER	NORTHING	EASTING
MH-5	5424.7694 5426.4050	11984.5871 11983.6130
MH-6	5640.0792 5641.6660	11963.9816 11966.6310
MH-7	5966.0304 5968.9090	11933.6666 11932.8980

CONTROL POINT	NORTHING	EASTING	ELEVATION
MCSM	5011.4600	11966.2800	4617.72

CONSTRUCTION NOTES

- ① 102/103/104 CONSTRUCT STD. 48" CONCRETE MANHOLE
- ② 102/103/104 10"x4" D3034 FULLBODY WYE AND 45° ELBOW. PAID BY EACH INSTALLED.
- ③ 102/103/104 INSTALL 10" SDR-35 PVC SEWER MAIN BACK FILL TRENCH WITH NATIVE OR IMPORT MATERIALS(IF APPROVED BY ENGINEER).
- ④ 107 PROTECT EXISTING IRRIGATION SYSTEMS, PLANT MATERIALS, STRUCTURES, CULVERTS, UTILITIES, SIGNS, FENCES, ECT. IN PLACE.
- ⑤ 102/103/104 4" SDR-35 PVC SERVICE
- ⑥ 304 PLACE 2" CLASS-6 ABC SHOULDER TREATMENT AS SHOWN ON PLANS
- ⑦ 202 ASPHALT REMOVAL AS SHOWN AND DISCUSSED IN SPECIAL PROVISIONS SP-10
- 304 AGGREGATE BASE COURSE(CL-6)(6" DEPTH). COMPACT TO 95% AASHTO T-99. COMPACT SUBGRADE TO 95% AASHTO T-99.
- 401 HOT BITUMINOUS PAVEMENT PATCH. (6R-C, 75 BLOW MARSHALL) (4" DEPTH) PAVEMENT SHALL BE APPLIED IN 2-2" LIFTS.



REVISION	DESCRIPTION	DATE	DRAWN BY	DATE	SCALE
REVISION A			JAH	2001	PLAN 1"=20'
REVISION B			SBG	2001	PROFILE 1"=5'
REVISION C			SBG	2001	
REVISION D					

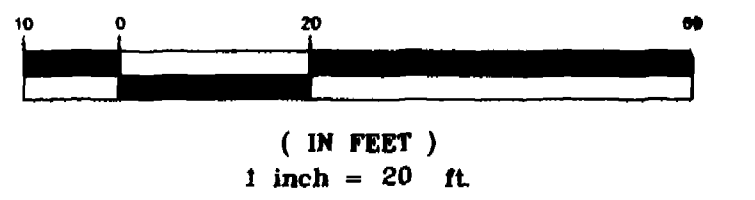
DEPARTMENT OF PUBLIC WORKS AND UTILITIES
ENGINEERING AND TECHNICAL SERVICES DIVISIONS
CITY OF GRAND JUNCTION, COLORADO

26 ROAD TRUNK LINE EXTENSION
SEWER LINE PLAN AND PROFILE
STA 9+50 TO STA 19+00

5 OF 9



GRAPHIC SCALE



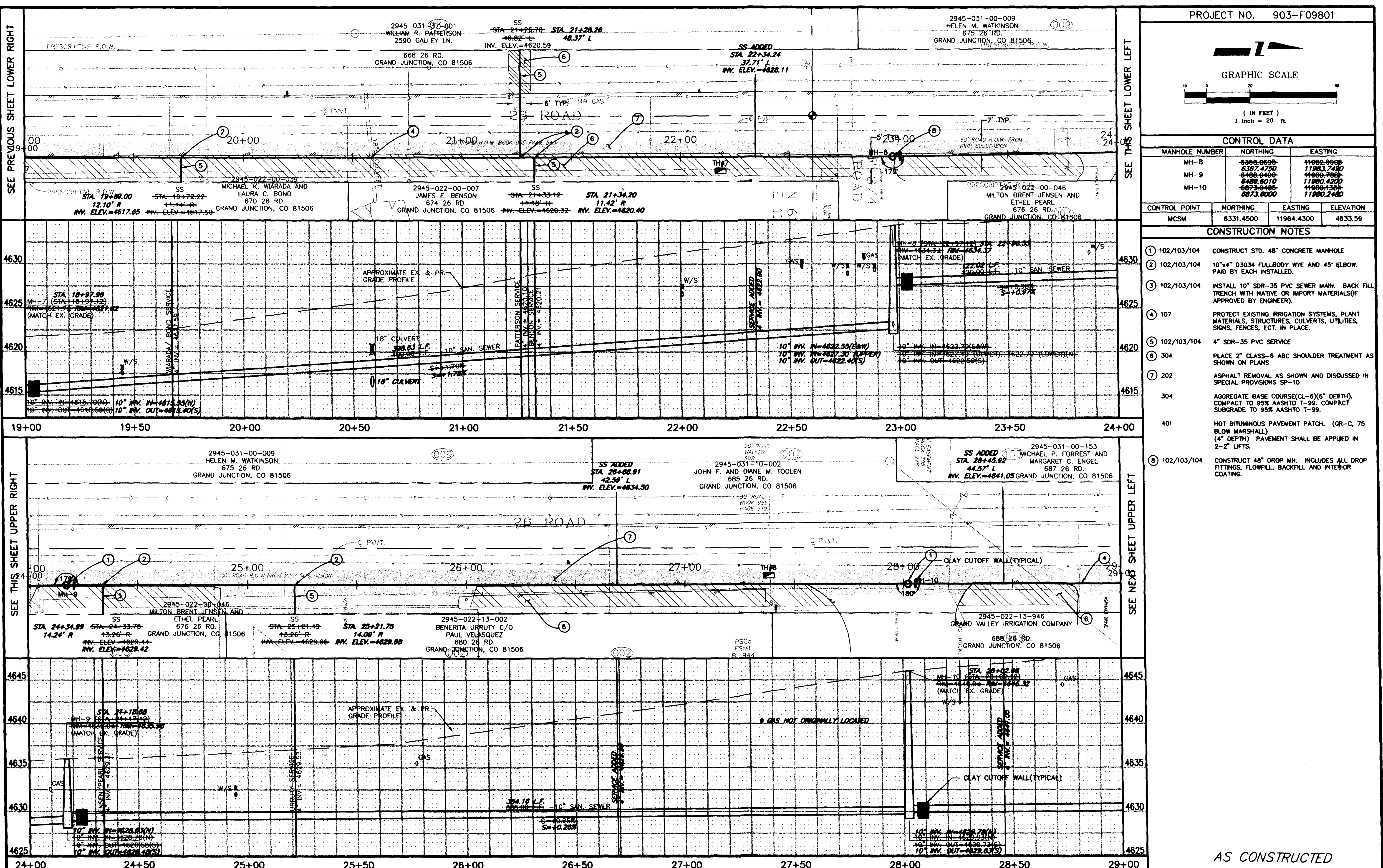
CONTROL DATA

MANHOLE NUMBER	NORTHING	EASTING
MH-8	6366.0698	11962.9968
MH-9	6367.4750	11963.7480
	6408.0498	11966.7081
	6488.6010	11968.4200
MH-10	6673.0485	11968.1384
	6873.6000	11968.2480

CONTROL POINT	NORTHING	EASTING	ELEVATION
MCSM	6331.4500	11964.4300	4633.59

CONSTRUCTION NOTES

- ① 102/103/104 CONSTRUCT STD. 48" CONCRETE MANHOLE
- ② 102/103/104 10"x4" D3034 FULLBODY WYE AND 45" ELBOW. PAID BY EACH INSTALLED.
- ③ 102/103/104 INSTALL 10" SDR-35 PVC SEWER MAIN. BACK FILL TRENCH WITH NATIVE OR IMPORT MATERIALS (IF APPROVED BY ENGINEER).
- ④ 107 PROTECT EXISTING IRRIGATION SYSTEMS, PLANT MATERIALS, STRUCTURES, CULTIVETS, UTILITIES, SIGNS, FENCES, ECT. IN PLACE.
- ⑤ 102/103/104 4" SDR-35 PVC SERVICE
- ⑥ 304 PLACE 2" CLASS-6 ABC SHOULDER TREATMENT AS SHOWN ON PLANS
- ⑦ 202 ASPHALT REMOVAL AS SHOWN AND DISCUSSED IN SPECIAL PROVISIONS SP-10
- 304 AGGREGATE BASE COURSE (CL-6)(6" DEPTH). COMPACT TO 95% AASHTO T-99. COMPACT SUBGRADE TO 95% AASHTO T-99.
- 401 HOT BITUMINOUS PAVEMENT PATCH. (GR-C, 75 BLOW MARSHALL) (4" DEPTH) PAVEMENT SHALL BE APPLIED IN 2-2" LIFTS.
- ⑧ 102/103/104 CONSTRUCT 48" DROP MH. INCLUDES ALL DROP FITTINGS, FLOWFILL, BACKFILL AND INTERIOR COATING.



AS CONSTRUCTED

REVISION	DESCRIPTION	DATE

DRAWN BY	JAH	DATE	2001
DESIGNED BY	SBG	DATE	2001
CHECKED BY	SBG	DATE	2001
APPROVED BY		DATE	

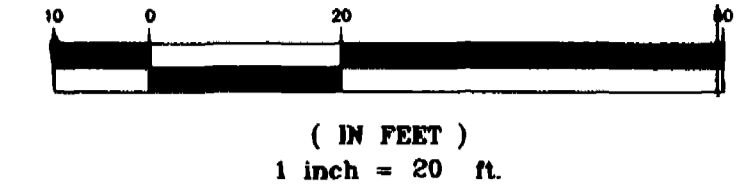
SCALE	
PLAN	1"=20'
PROFILE	1"=20'
HORIZ.	1"=20'
VERT.	1"=5'

DEPARTMENT OF PUBLIC WORKS AND UTILITIES
 ENGINEERING AND TECHNICAL SERVICES DIVISIONS
 CITY OF GRAND JUNCTION, COLORADO

26 ROAD TRUNK LINE EXTENSION
 SEWER LINE PLAN AND PROFILE
 STA 19+00 TO STA 29+00



GRAPHIC SCALE



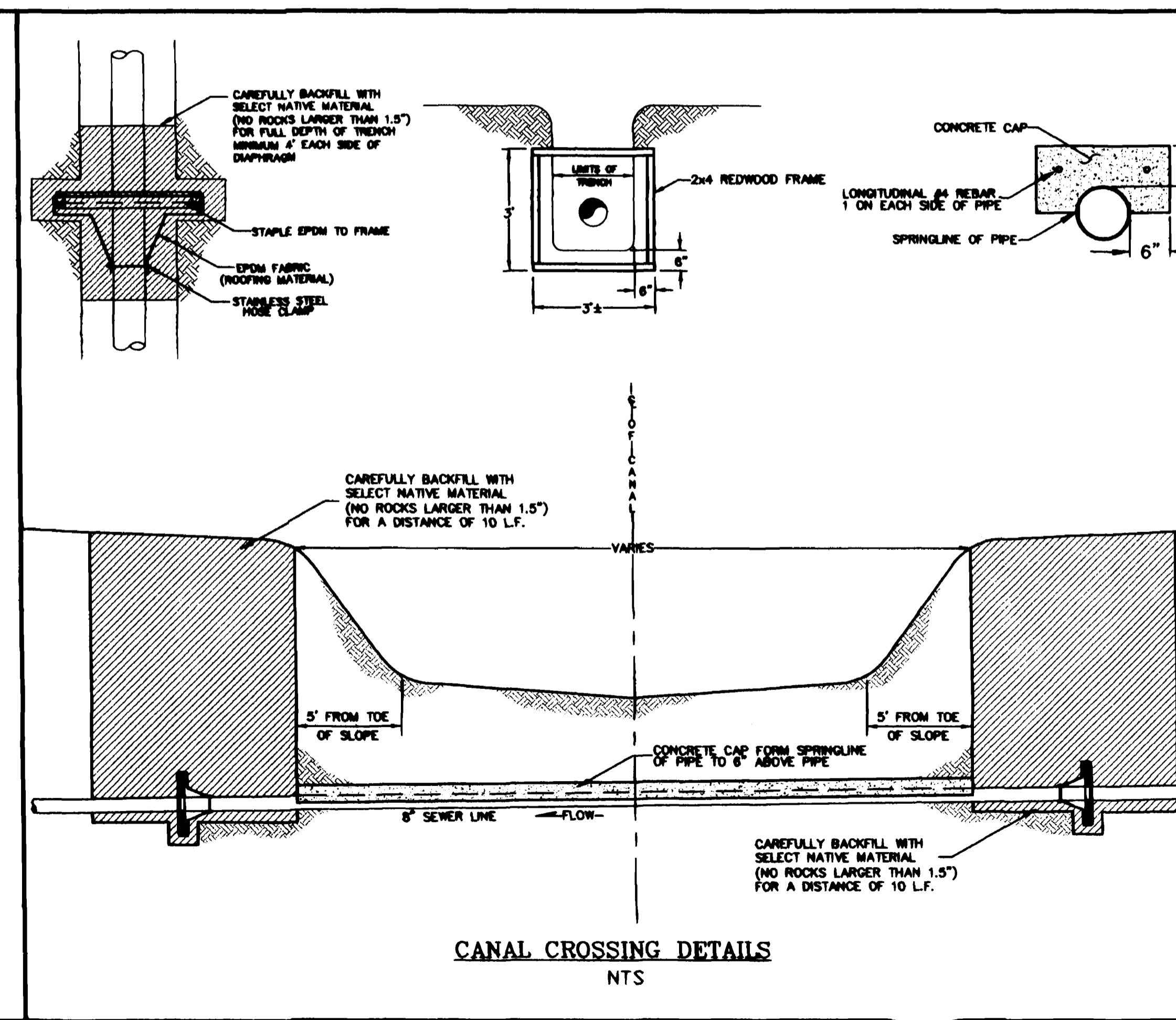
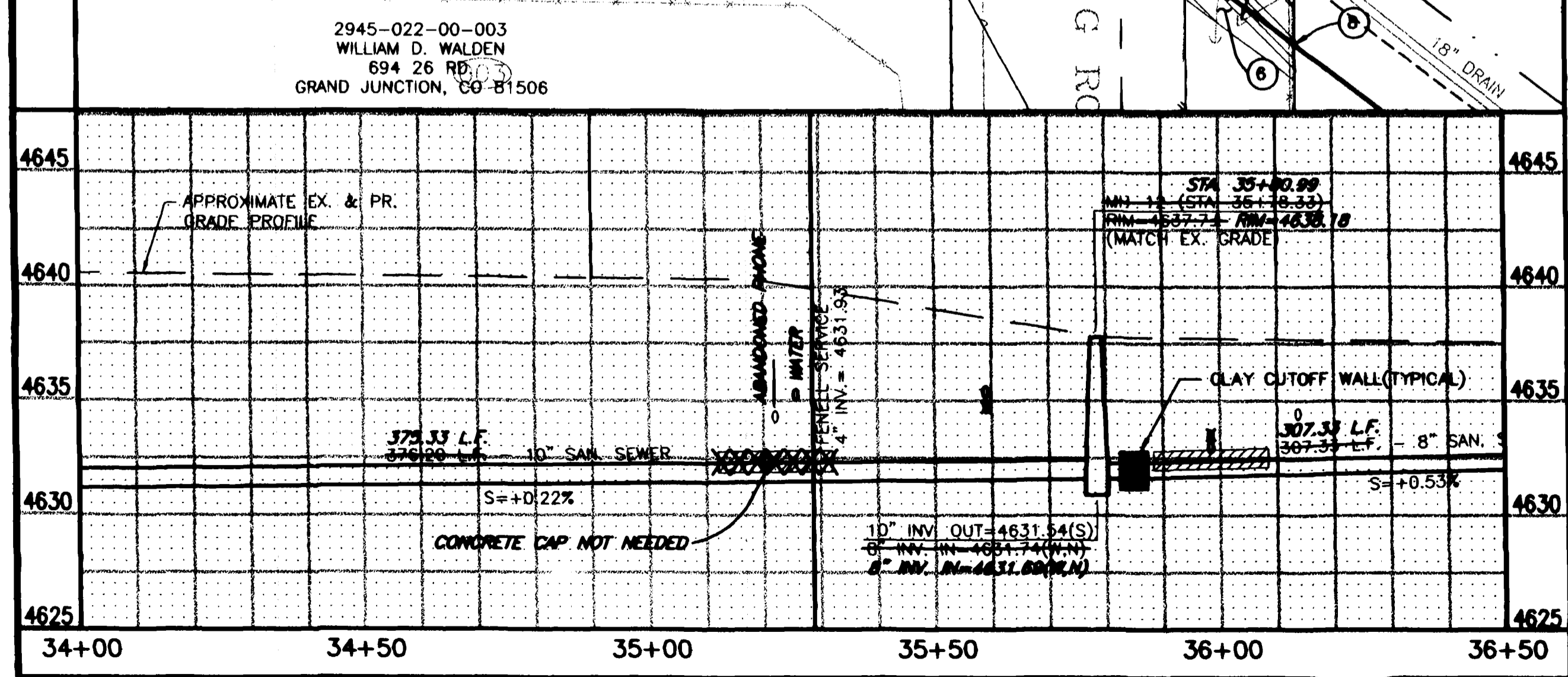
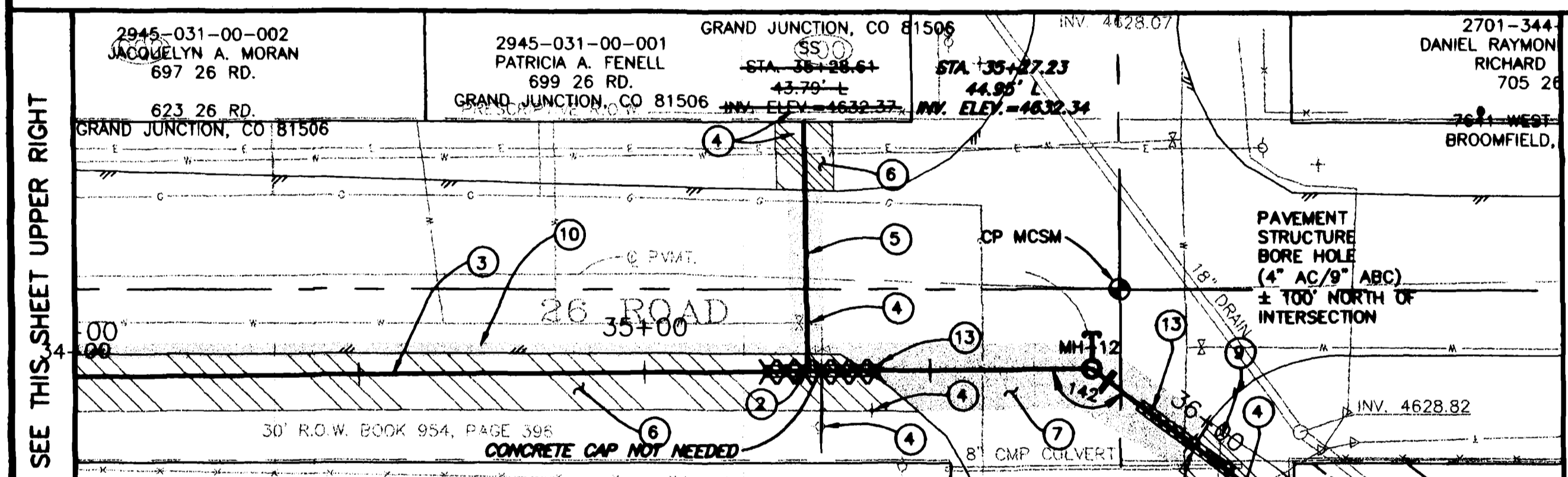
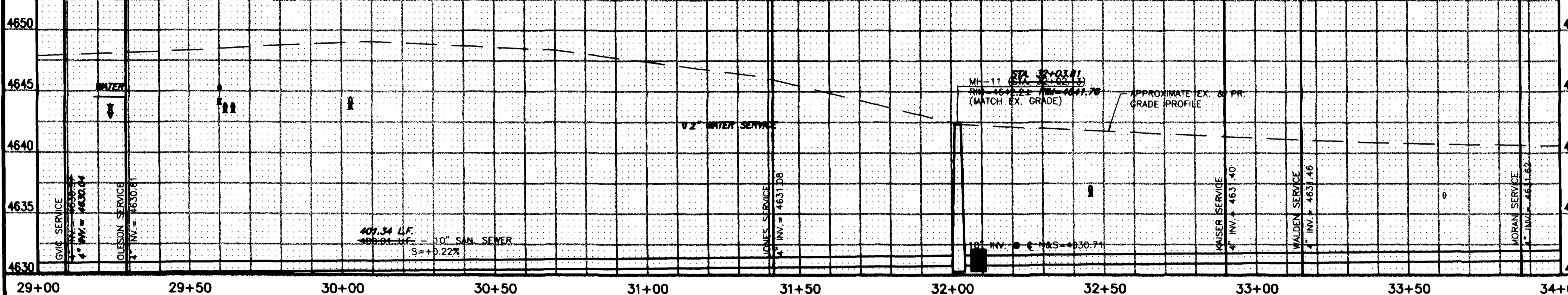
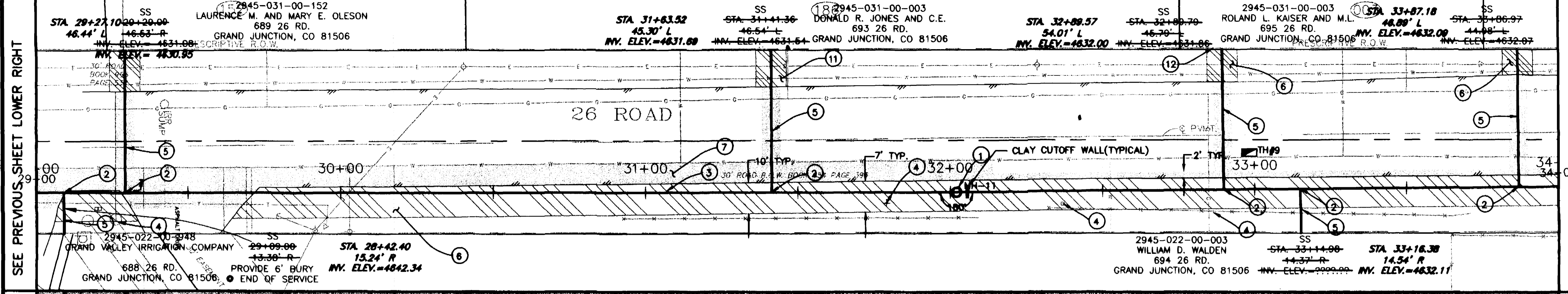
CONTROL DATA

MANHOLE NUMBER	NORTHING	EASTING
MH-11	7273.0527	11979.4631
MH-12	7274.7310	11978.7730
MH-13	7649.2355	11975.0285
	7650.0580	11979.1540
	7694.6463	12106.0340
	7890.5790	12163.5900

CONTROL POINT	NORTHING	EASTING	ELEVATION
MCSM	7654.2486	11961.8245	4637.60

CONSTRUCTION NOTES

- ① 102/103/104 CONSTRUCT STD. 48" CONCRETE MANHOLE PAID BY EACH INSTALLED.
- ② 102/103/104 10"x4" D3034 FULLBODY WYE AND 45° ELBOW. PAID BY EACH INSTALLED.
- ③ 102/103/104 INSTALL 10" SDR-35 PVC SEWER MAIN. BACK FILL TRENCH WITH NATIVE OR IMPORT MATERIALS(IF APPROVED BY ENGINEER).
- ④ 107 PROTECT EXISTING IRRIGATION SYSTEMS, PLANT MATERIALS, STRUCTURES, CULVERTS, UTILITIES, SIGNS, FENCES, ECT. IN PLACE.
- ⑤ 102/103/104 4" SDR-35 PVC SERVICE
- ⑥ 304 PLACE 2" CLASS-6 ABC SHOULDER TREATMENT AS SHOWN ON PLANS
- ⑦ 202 ASPHALT REMOVAL AS SHOWN AND DISCUSSED IN SPECIAL PROVISIONS SP-10
- 304 AGGREGATE BASE COURSE(CL-6)(6" DEPTH). COMPACT TO 95% AASHTO T-99. COMPACT SUBGRADE TO 95% AASHTO T-99.
- 401 HOT BITUMINOUS PAVEMENT PATCH. (GR-C, 75 BLOW MARSHALL) (4" DEPTH) PAVEMENT SHALL BE APPLIED IN 2-2" LIFTS.
- ⑧ 102/103/104 INSTALL 8" SDR-35 PVC SEWER MAIN. BACKFILL TRENCH WITH NATIVE MATERIAL, OR IMPORT MATERIALS(IF APPROVED BY ENGINEER).
- ⑨ THE CONTRACTOR SHALL COORDINATE WORK AROUND EXISTING POWER POLES THAT MAY NEED TEMPORARY SUPPORT WITH THE UTILITY OWNER. (XCEL ENERGY OR GRAND VALLEY RURAL POWER)
- ⑩ ASPHALT REMOVAL AND REPLACEMENT ON 26 RD STA. 32+12 TO STA. 35+35 SHALL BE LIMITED TO A 2' WIDTH ALONG THE SHOULDER AS SHOWN.
- ⑪ CONTRACTOR SHALL MOVE AND SALVAGE EXISTING GRAVEL MATERIAL AND REPLACE WHEN SERVICE INSTALLATION IS COMPLETED, COST IS INCIDENTAL TO CONSTRUCTION.
- ⑫ PROTECT EXISTING ROSE BUSHES AND FENCE IN PLACE.
- ⑬ 102/103/104 PROVIDE CONCRETE CAP OVER SEWER LINE. NOT CONSTRUCTED



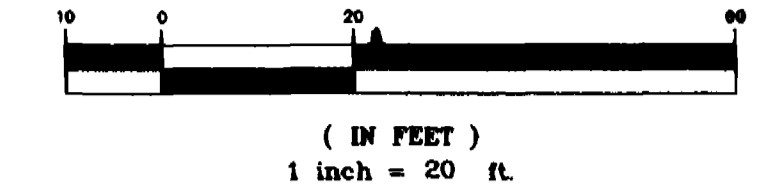
REVISION	DESCRIPTION	DATE	DRAWN BY	DATE
REVISION			JAH	2001
REVISION			SBG	2001
REVISION			SBG	2001
REVISION				

SCALE	
PLAN	1"=20'
PROFILE	1"=5'

DEPARTMENT OF PUBLIC WORKS AND UTILITIES
ENGINEERING AND TECHNICAL SERVICES DIVISIONS
CITY OF GRAND JUNCTION, COLORADO

26 ROAD TRUNK LINE EXTENSION
SEWER LINE PLAN AND PROFILE
STA 29+00 TO STA 36+00

GRAPHIC SCALE



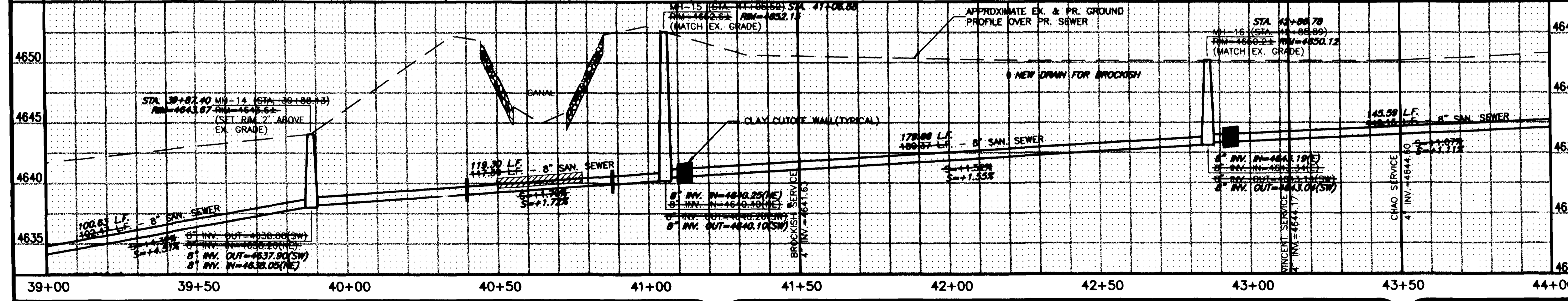
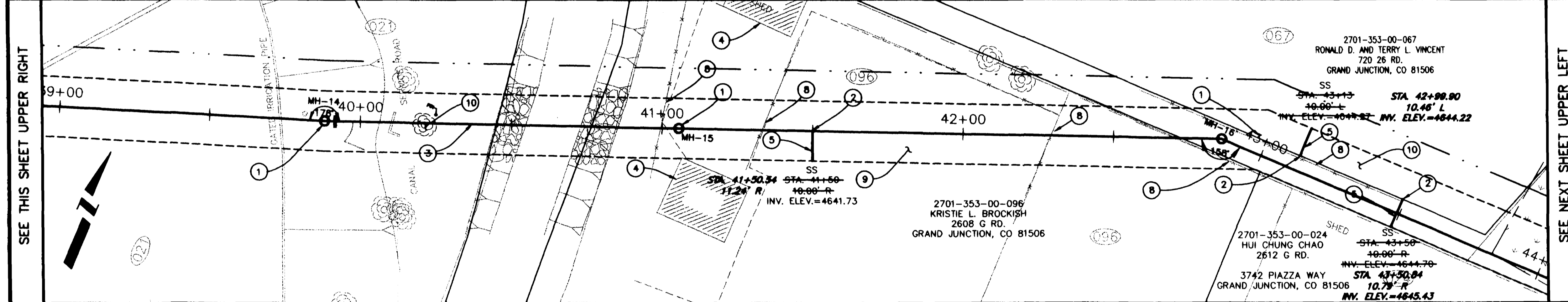
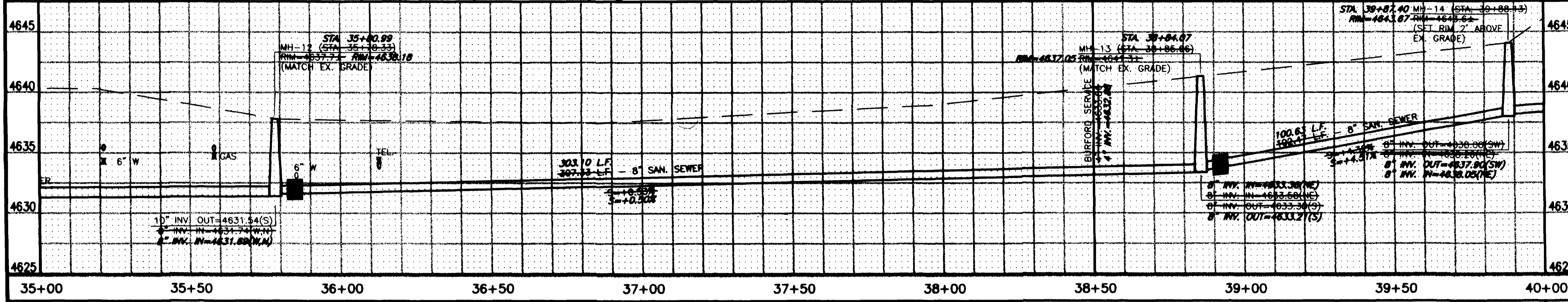
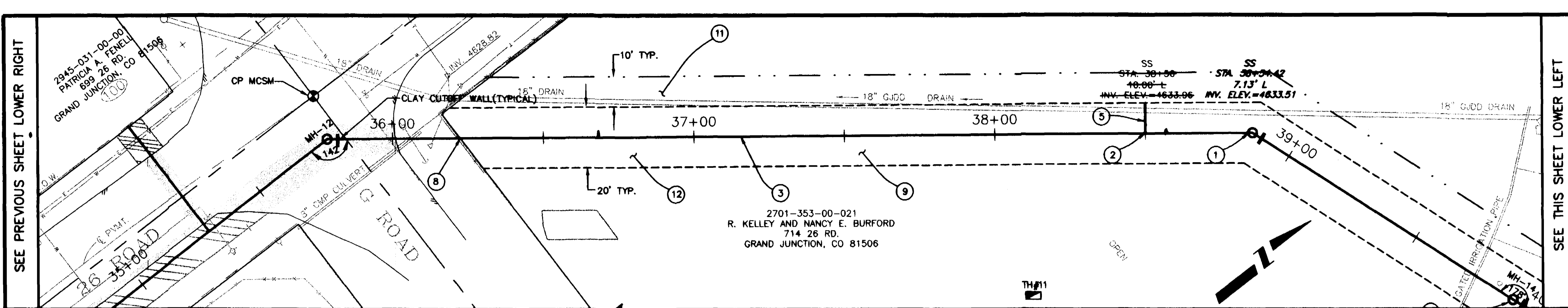
CONTROL DATA

MANHOLE NUMBER	NORTHING	EASTING
MH-12	7649.2355	11975.0205
MH-13	7650.0580	11979.1540
MH-14	7694.6463	12160.0318
MH-15	7929.0165	12257.0747
MH-16	7974.8510	12365.5520
	8040.9266	12368.7429
	8039.8935	12533.3275
		12534.2123

CONTROL POINT	NORTHING	EASTING	ELEVATION
MCSM	7854.2486	11961.8245	4637.60

CONSTRUCTION NOTES

- ① 102/103/104 CONSTRUCT STD. 48" CONCRETE MANHOLE
- ② 102/103/104 8"x4" D3034 FULLBODY WYE AND 45° ELBOW. PAID BY EACH INSTALLED.
- ③ 102/103/104 INSTALL 8" SDR-35 PVC SEWER MAIN. BACK FILL TRENCH WITH NATIVE OR IMPORT MATERIALS (IF APPROVED BY ENGINEER).
- ④ 107 PROTECT EXISTING IRRIGATION SYSTEMS, PLANT MATERIALS, STRUCTURES, CULTVERTS, UTILITIES, SIGNS, FENCES, ECT. IN PLACE.
- ⑤ 102/103/104 4" SDR-35 PVC SERVICE
- ⑥ 304 PLACE 2" CLASS-8 ABC SHOULDER TREATMENT AS SHOWN ON PLANS
- ⑦ 202 ASPHALT REMOVAL AS SHOWN AND DISCUSSED IN SPECIAL PROVISIONS SP-10
- ⑧ 304 AGGREGATE BASE COURSE (CL-6)(6" DEPTH). COMPACT TO 95% AASHTO T-99. COMPACT SUBGRADE TO 95% AASHTO T-99.
- ④ 401 HOT BITUMINOUS PAVEMENT PATCH. (GR-C, 75 BLOW MARSHALL) (4" DEPTH) PAVEMENT SHALL BE APPLIED IN 2-2" LIFTS.
- ⑧ REMOVE AND REPLACE FENCE ±200'
- ⑨ RESTORE IRRIGATED FIELDS ON BURFORD AND BROCKISH PROPERTIES PER SP-3 OF THE SPECIAL PROVISIONS.
- ⑩ CLEAR AND GRUB AS NEEDED TO FACILITATE CONSTRUCTION.
- ⑪ LIMITS OF ADDITIONAL 10' TEMPORARY CONSTRUCTION EASEMENT.
- ⑫ LIMITS OF PERMANENT 20' SEWER EASEMENT.



AS CONSTRUCTED

REVISION	DESCRIPTION	DATE	DRAWN BY	DATE	SCALE
REVISION A			JAH	2001	PLAN 1"=20'
REVISION B			SBG	2001	PROFILE 1"=20'
REVISION C			SBG	2001	HORIZ. 1"=20'
REVISION D					VERT. 1"=5'

DEPARTMENT OF PUBLIC WORKS AND UTILITIES
 ENGINEERING AND TECHNICAL SERVICES DIVISIONS
 CITY OF GRAND JUNCTION, COLORADO

26 ROAD TRUNK LINE EXTENSION
 SEWER LINE PLAN AND PROFILE
 STA 36+00 TO STA 44+00

GRAPHIC SCALE



(IN FEET)
1 inch = 20 ft.

CONTROL DATA

MANHOLE NUMBER	NORTHING	EASTING
MH-17	8040.5010	12679.4700
MH-18	8041.7571	12679.7887
MH-19	8153.0805	12736.0610
MH-20	8199.0787	12853.2413
MH-21	8200.1639	12853.2207
MH-22	8200.4546	13031.7042
MH-21	8200.2625	13032.3569
MH-22	8327.5150	13191.9004
MH-22	8337.7568	13382.3911

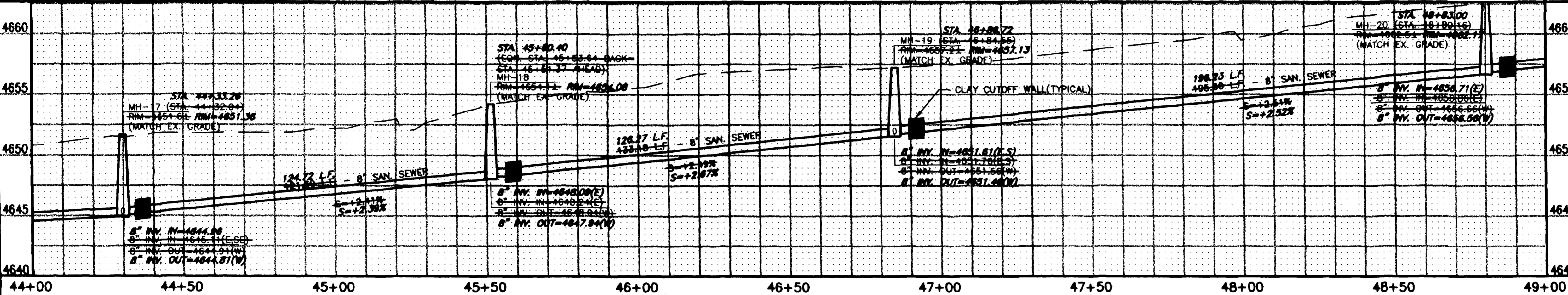
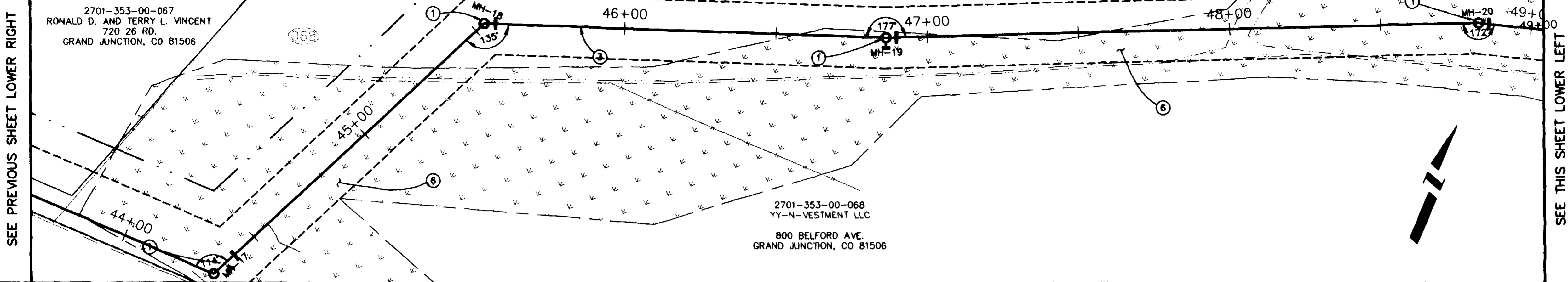
CONSTRUCTION NOTES

- ① 102/103/104 CONSTRUCT STD. 48" CONCRETE MANHOLE.
- ② NOT USED.
- ③ 102/103/104 INSTALL 8" SDR-35 PVC SEWER MAIN. BACK FILL TRENCH WITH NATIVE OR IMPORT MATERIALS(IF APPROVED BY ENGINEER).
- ④ 107 SALVAGE EXISTING LIFT STATION.
- ⑤ RECONSTRUCT LIFTSTATION WETWELL TO PROVIDE NEW MH-22. SEE DETAIL THIS SHEET.
- ⑥ EXISTING WETLAND AREA.

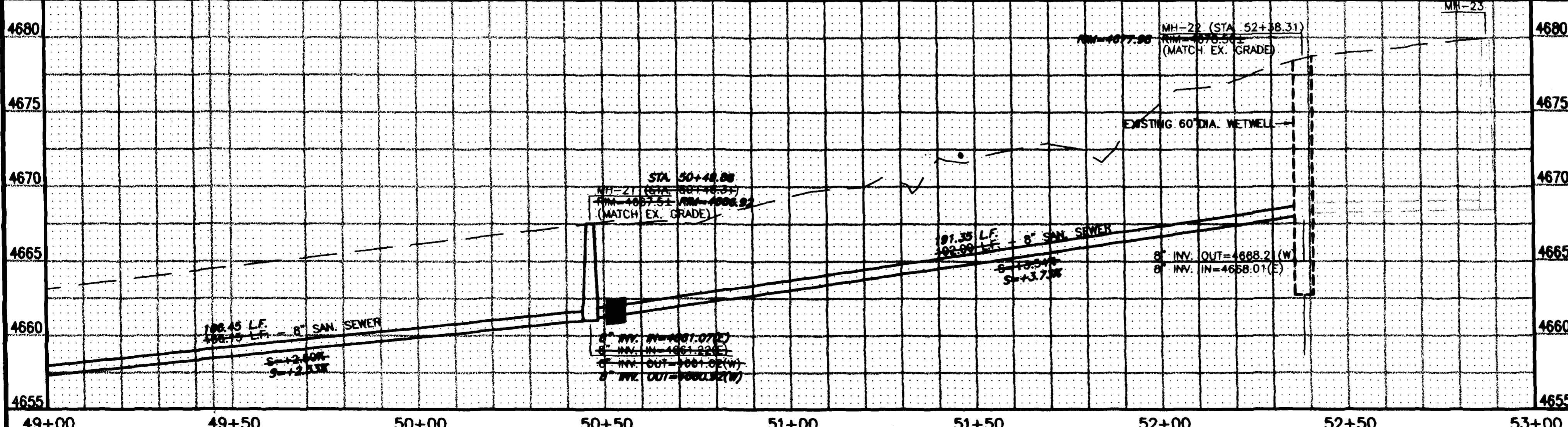
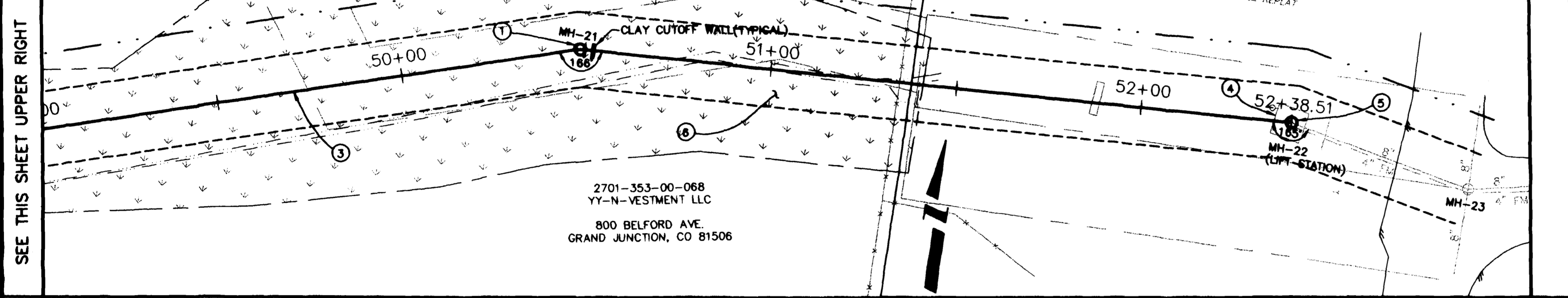
2701-353-00-067
RONALD D. AND TERRY L. VINCENT
720 26 RD.
GRAND JUNCTION, CO 81506

2701-353-00-068
YY-N-VESTMENT LLC
800 BELFORD AVE.
GRAND JUNCTION, CO 81506

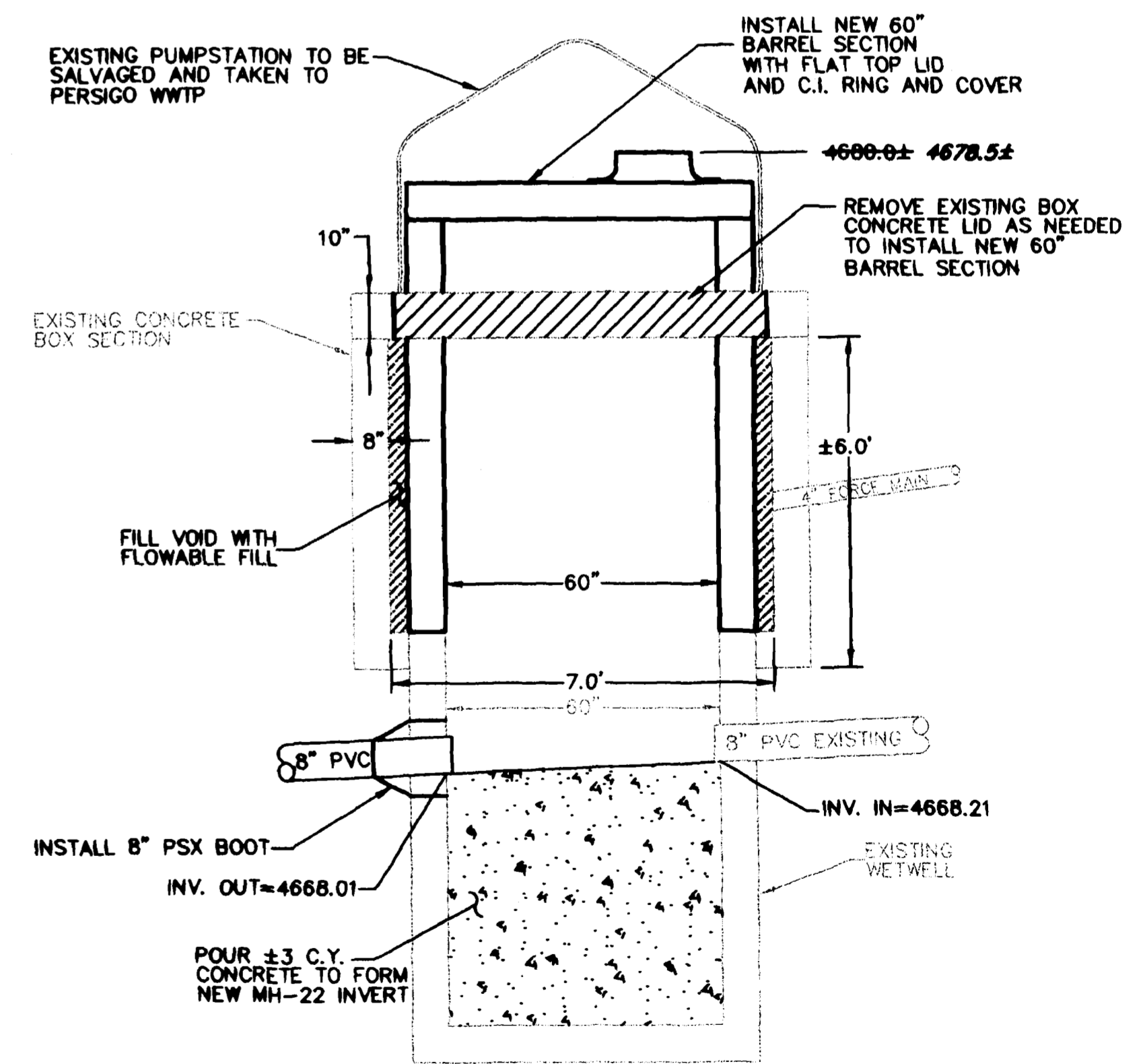
2701-353-00-068
YY-N-VESTMENT LLC
800 BELFORD AVE.
GRAND JUNCTION, CO 81506



44+00 44+50 45+00 45+50 46+00 46+50 47+00 47+50 48+00 48+50 49+00



49+00 49+50 50+00 50+50 51+00 51+50 52+00 52+50 53+00



MH-22 DETAIL
N.T.S.

AS CONSTRUCTED

REVISION	DESCRIPTION	DATE

DRAWN BY	JAH	DATE	2001
DESIGNED BY	SBG	DATE	2001
CHECKED BY	SBG	DATE	2001
APPROVED BY		DATE	

SCALE	
PLAN	1"=20'
PROFILE	1"=20'
HORIZ.	1"=20'
VERT.	1"=5'

DEPARTMENT OF PUBLIC WORKS AND UTILITIES
ENGINEERING AND TECHNICAL SERVICES DIVISIONS
CITY OF GRAND JUNCTION, COLORADO

26 ROAD TRUNK LINE EXTENSION
SEWER LINE PLAN AND PROFILE
STA 44+00 TO STA 53+00