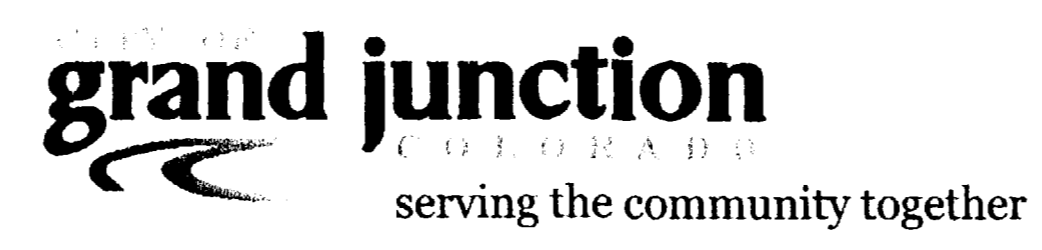


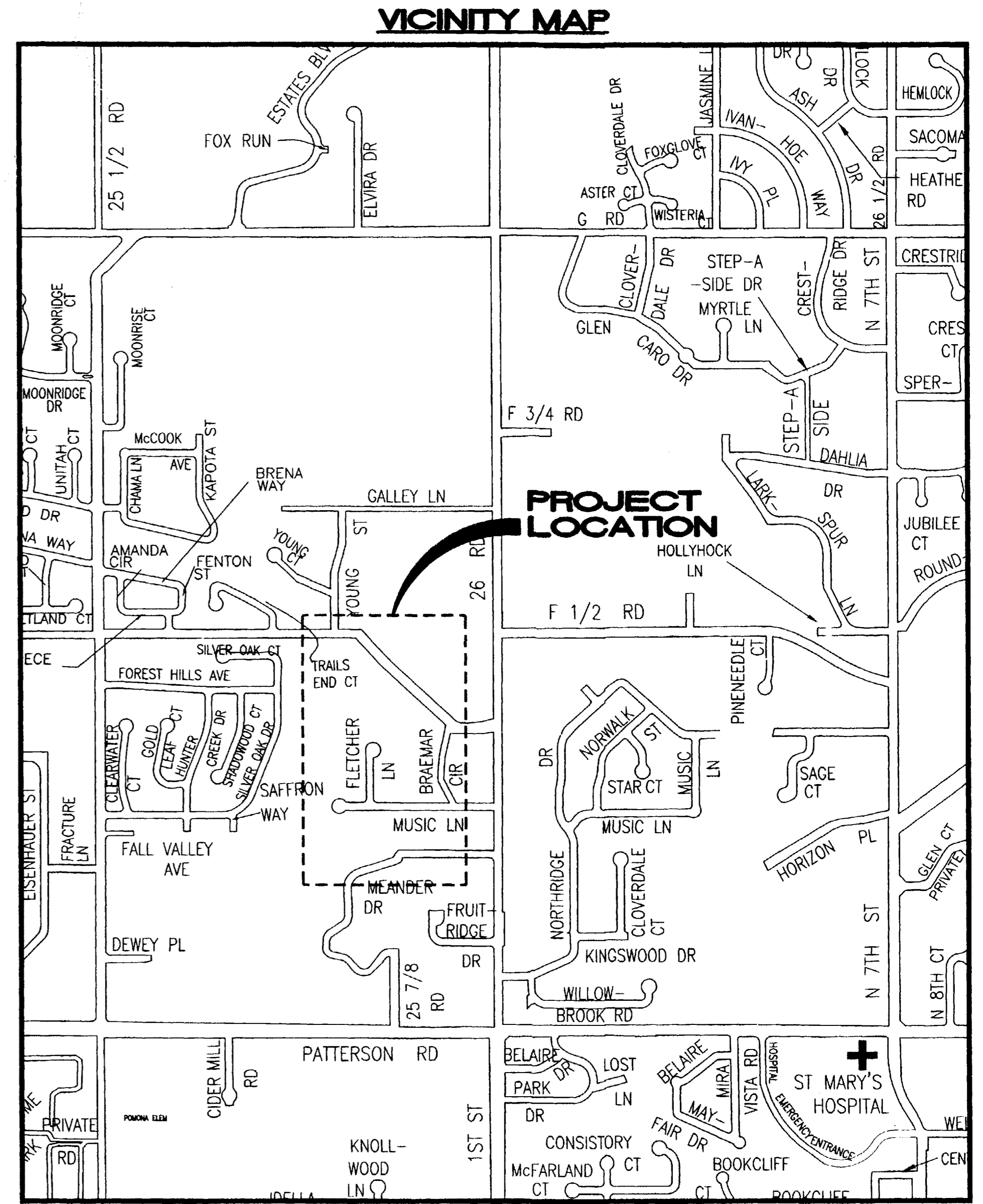
MUSIC LANE SEWER IMPROVEMENT DISTRICT DECEMBER, 2003



- 1 ————— Cover Sheet
- 2 ————— Standard Abbreviations, Legend, and Symbols
- 3 ————— Summary of Approximate Quantities
- 4-12 ——— Sanitary Sewer Plan and Profile

PROJECT BENCHMARKS NAVD88 (UPDATED 1993) - WGS84	
<p>Ⓐ SET #3 PIN IN CONCRETE POINT #455 ELEVATION = 4625.17 N 46199.00, E 88443.99</p>	<p>Ⓓ #5 PIN - CONTROL POINT POINT #400 ELEVATION = 4639.83 N 46386.95, E 89073.94</p>
<p>Ⓑ HINGE NAIL @ MUSIC LANE AND FLETCHER LANE POINT #450 ELEVATION = 4633.72 N 46222.87, E 88600.88</p>	<p>Ⓔ HINGE NAIL - CONTROL POINT POINT #206 ELEVATION = 4630.79 N 46594.57, E 88603.52</p>
<p>Ⓒ HINGE NAIL @ MUSIC LANE AND BRAEMAR CIRCLE POINT #449 ELEVATION = 4641.92 N 46224.64, E 89185.69</p>	<p>Ⓕ #4 PIN - NORTH SIDE OF F 1/2 ROAD POINT #405 ELEVATION = 4606.38 N 47192.08, E 88668.96</p>

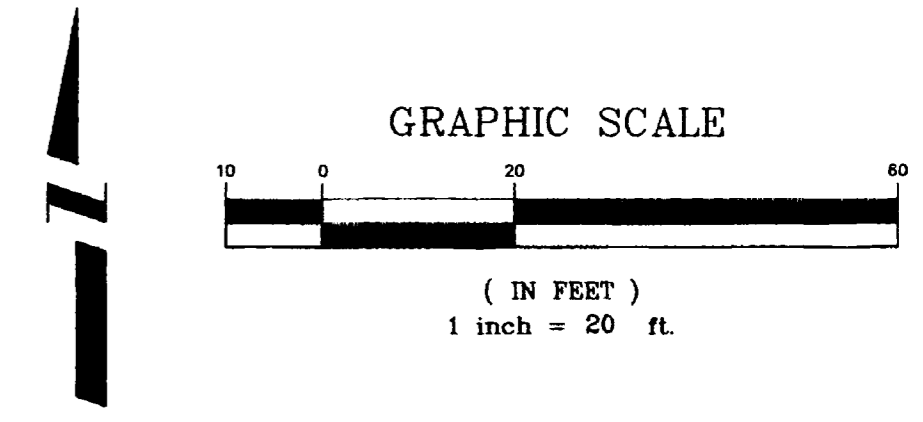
UTILITIES AND AGENCIES								
AGENCY	NAME	POSITION	ROLE	MAILING ADDRESS	STREET ADDRESS	CITY, STATE	VOICE-WK	FAX
GRAND JUNCTION, CITY OF	DAVE DONOHUE	PROJECT ENGINEER	PROJECT ENGINEER	250 N. 5th STREET	250 N. 5th STREET	GRAND JCT., CO 81501	(970) 244-1558	(970) 256-4022
BRESNAN COMMUNICATIONS	CHUCK WIEDMAN	FIELD ENGINEER	CABLE TV	2502 FORESIGHT CIRCLE	2502 FORESIGHT CIRCLE	GRAND JCT., CO 81504	(970) 245-8777	(970) 245-6803
U.S. WEST/QWEST	MARK EHRlich	FIELD ENGINEER	TELEPHONE	2524 BLICHMANN ROAD	2524 BLICHMANN ROAD	GRAND JCT., CO 81504	(970) 244-4916	(970) 240-4349
UTE WATER	ED TOLEN	ENGINEER	WATER	PO BOX 460	560 25 ROAD	GRAND JCT., CO 81505	(970) 242-7491	(970) 242-9189
XCEL	HAROLD BALL	PROJECT PLANNER	GAS, ELECTRIC	2538 BLICHMANN ROAD	2538 BLICHMANN ROAD	GRAND JCT., CO 81504	(970) 244-2626	(970) 244-2661
FALLS VALLEY H.O.A.	CAROL SNYDER						(970) 255-9444	



*Department of Public Works & Utilities
Engineering and Technical Services Divisions
City of Grand Junction, Colorado*

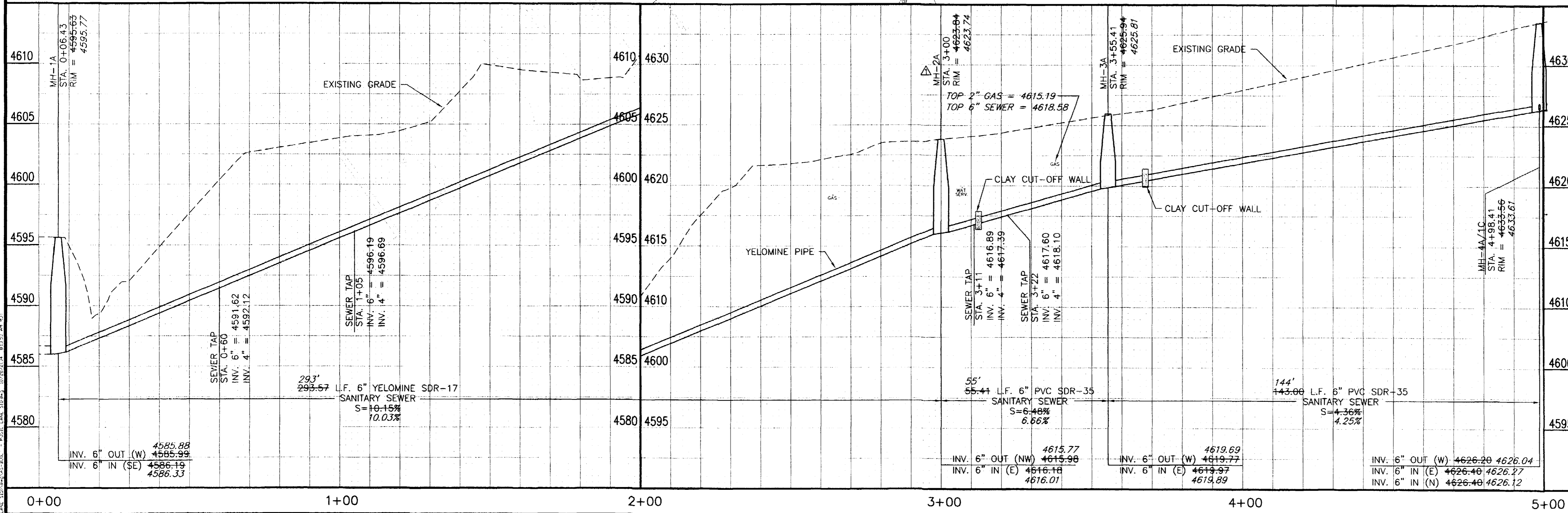
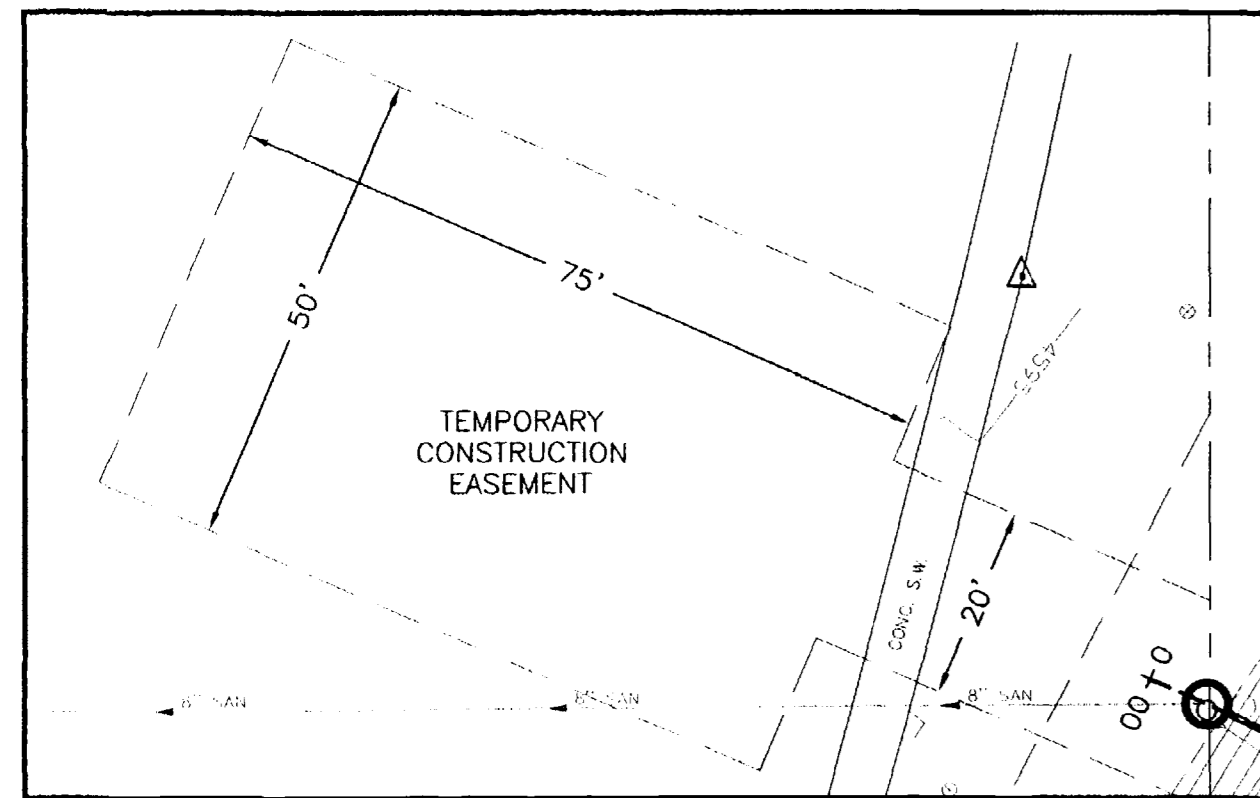
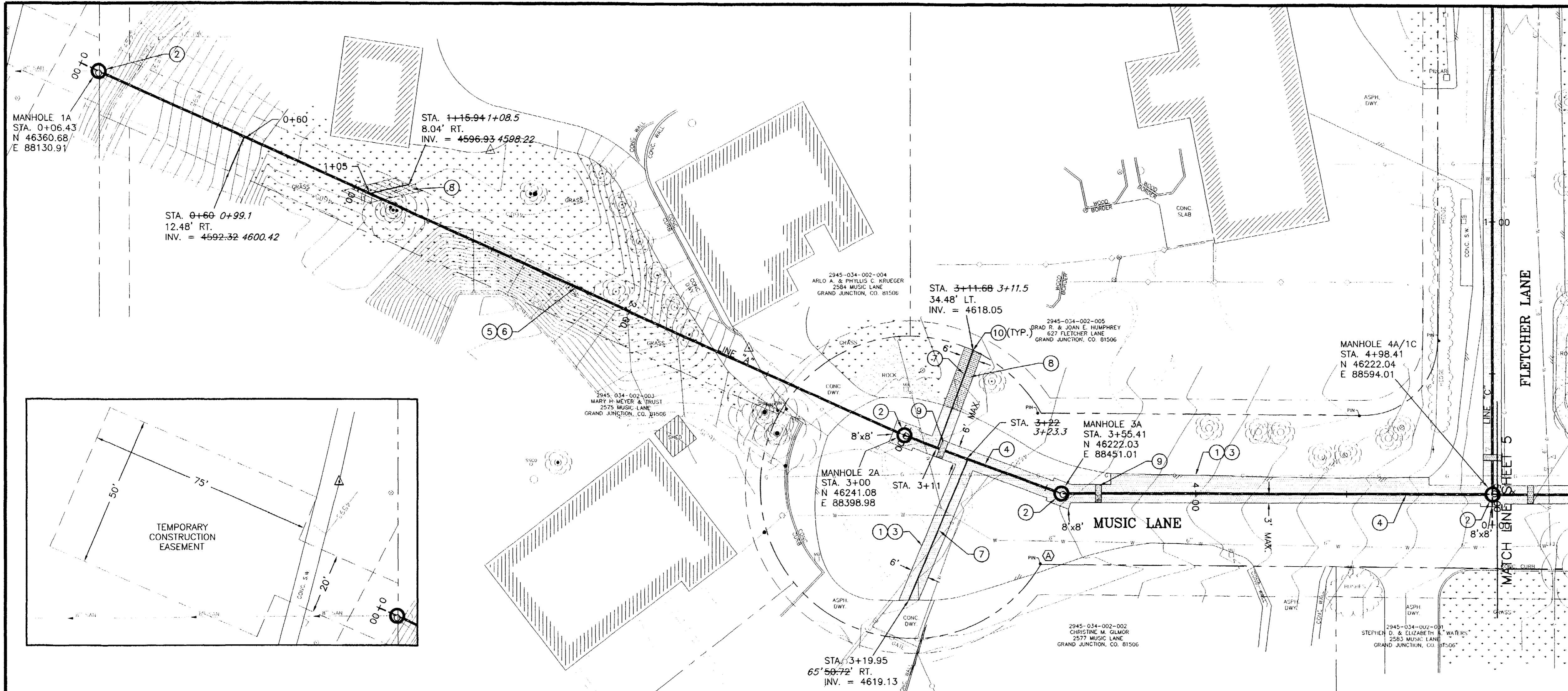
DRAWING STATUS:	
○	PROGRESS
○	BID SET
○	FINAL CONSTRUCTION DRAWINGS
●	ASBUILT
APPROVED FOR CONSTRUCTION	
CITY OF GRAND JUNCTION	DATE
ACCEPTED AS CONSTRUCTED	
CITY OF GRAND JUNCTION	DATE

MUSIC LANE SEWER IMPROVEMENT DISTRICT - 2003



CONSTRUCTION NOTES

- ① 103.3 - ASPHALT REMOVAL: CUT AND REMOVE PAVEMENT AS SHOWN, GENERALLY WIDTH TO INSTALL MANHOLES WILL BE 8' CENTERED ON THE MANHOLE AND SQUARED OFF AS SHOWN. FOR MAIN LINE REMOVAL WIDTH WILL BE 6' MINIMUM AND 8' MAXIMUM CENTERED ON THE PIPE. SERVICE TRENCH WIDTH SHALL BE 6' MAXIMUM.
- ② 102.11 - 48" DIA. SANITARY SEWER MANHOLE (SEE CITY OF GRAND JUNCTION STANDARD DETAIL SS-02).
- ③ 103.18 - PAVEMENT REPLACEMENT:
304.00 - CDOT CLASS-6 AGGREGATE BASE COURSE, SAME THICKNESS AS EXISTING (6" MIN.).
401.00 - HOT BITUMINOUS PAVEMENT (GRADING SX) MATCH EXISTING THICKNESS (3" MIN.). (SEE CITY OF GRAND JUNCTION STANDARD DETAIL GU-03).
- ④ 102.9A - 6" GRAVITY SEWER PIPE (SDR-35 PVC). BACKFILL TRENCH WITH NATIVE MATERIALS MEETING 103.16 EARTH BACKFILL MATERIAL.
- ⑤ 102.9C - CARRIER/CASING SEWER PIPE FOR BORE SHALL BE "CERTAINTED CERTA-LOC YELOMINE RESTRAINED JOINT PVC PIPE (CLASS-250, SDR-17).
- ⑥ 104.2A - INSTALL SEWER PIPE BY BORING AND JACKING OR DIRECTIONAL DRILLING PER SPECIAL PROVISIONS.
- ⑦ 102/103/104 - INSTALL NEW 4" SEWER SERVICE TAP TO PROPERTY LINE (SEE CITY OF GRAND JUNCTION TYPICAL SERVICE "Y" CONNECTION).
- ⑧ 212 - REMOVE AND REPLACE SOD.
- ⑨ 104 - INSTALL CLAY CUT-OFF WALL.
- ⑩ CONTRACTOR IS RESPONSIBLE FOR REPAIR COSTS ASSOCIATED WITH ANY/ALL DAMAGE TO PRIVATE PROPERTY BEHIND RIGHT-OF-WAY LINE AND/OR LIMITS OF CONSTRUCTION SHOWN ON PLANS.



NOTE: NOTIFY AFFECTED UTILITY VENDOR 48 HOURS PRIOR TO EXCAVATIONS THAT WILL EXPOSE UTILITY LINES. THE COVER SHEET WILL HAVE A LISTING OF UTILITY VENDORS AND TELEPHONE NUMBERS.

REVISION	DESCRIPTION	DATE
REVISION 1	TEXT REVISION	1-8-04
REVISION 2		
REVISION 3		
REVISION 4		

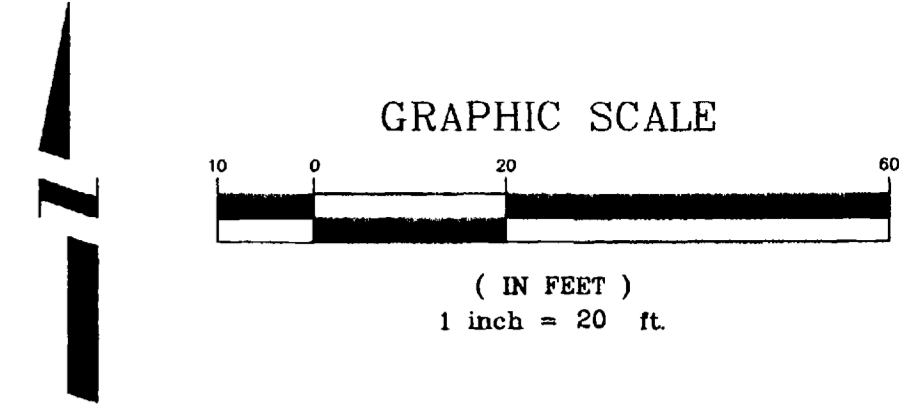
DRAWN BY	DPW	DATE	2003
DESIGNED BY	DD	DATE	2003
CHECKED BY	DD	DATE	2003
APPROVED BY		DATE	

SCALE	
PLAN	PROFILE
HORIZ. 1"=20'	HORIZ. 1"=20'
	VERT. 1"=5'

grand junction
COLORADO
serving the community together

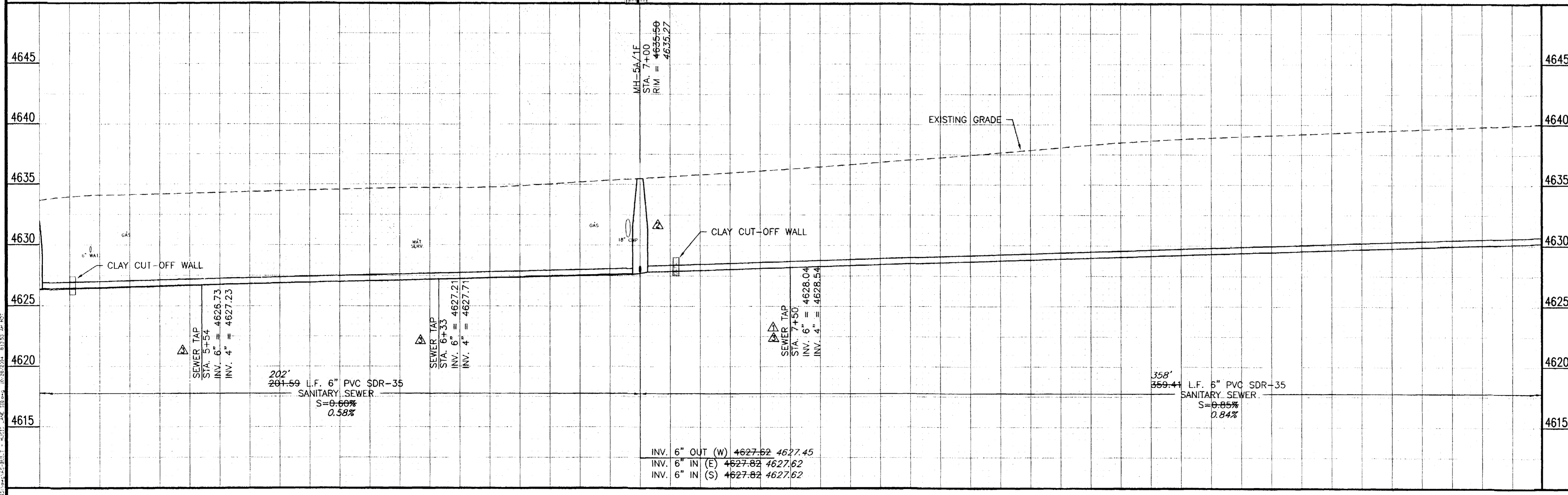
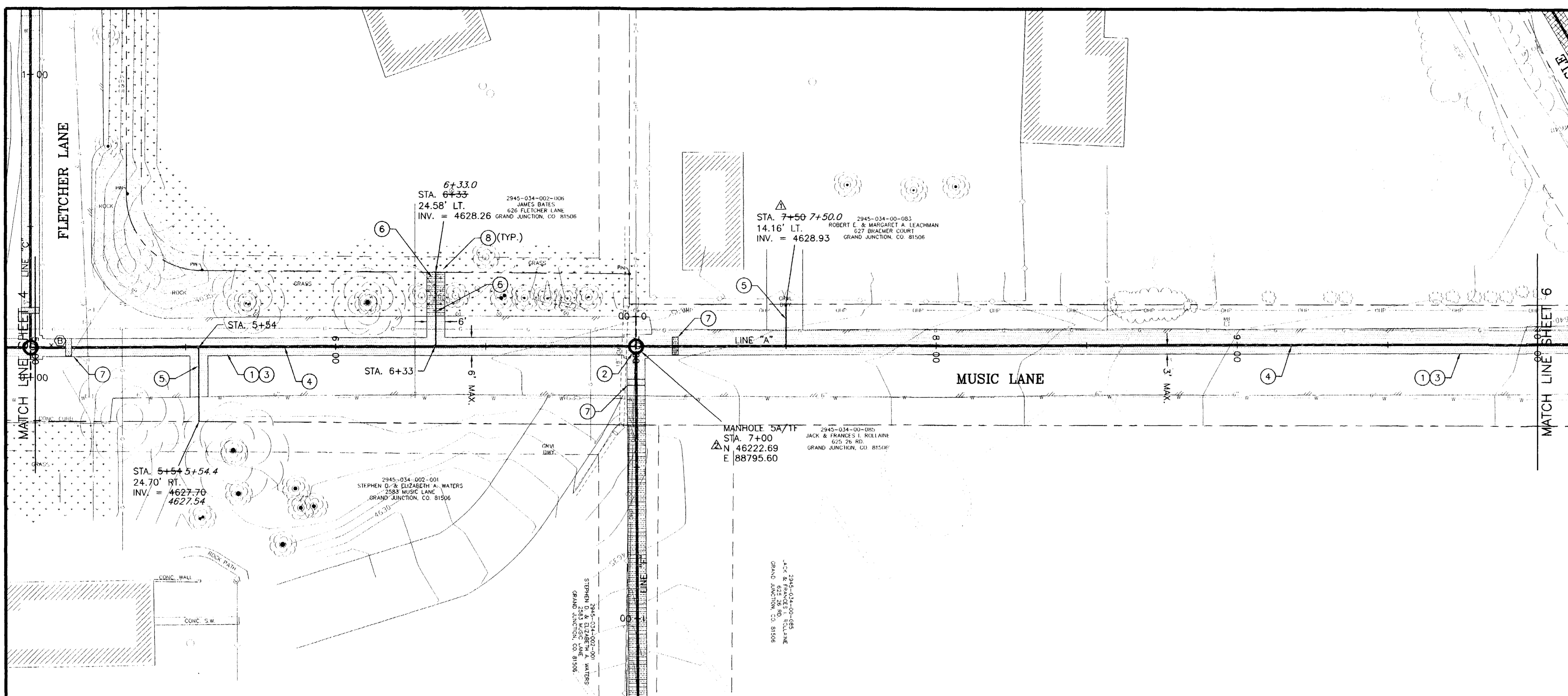
PUBLIC WORKS AND UTILITIES ENGINEERING DIVISION

MUSIC LANE SEWER IMPROVEMENT DISTRICT
LINE A - STA. 0+00 TO STA. 5+00



CONSTRUCTION NOTES

- ① 103.3 - ASPHALT REMOVAL: CUT AND REMOVE PAVEMENT AS SHOWN. GENERALLY WIDTH TO INSTALL MANHOLES WILL BE 8' CENTERED ON THE MANHOLE AND SQUARED OFF AS SHOWN. FOR MAIN LINE REMOVAL WIDTH WILL BE 6' MINIMUM AND 8' MAXIMUM CENTERED ON THE PIPE. SERVICE TRENCH WIDTH SHALL BE 6' MAXIMUM.
- ② 102.11 - 48" DIA. SANITARY SEWER MANHOLE (SEE CITY OF GRAND JUNCTION STANDARD DETAIL SS-02).
- ③ 103.18 - PAVEMENT REPLACEMENT:
304.00 - CDOT CLASS-6 AGGREGATE BASE COURSE. SAME THICKNESS AS EXISTING (6" MIN.). COMPACTED TO 95% AASHTO T-180.
401.00 - HOT BITUMINOUS PAVEMENT (GRADING SX) MATCH EXISTING THICKNESS (3" MIN.). (SEE CITY OF GRAND JUNCTION STANDARD DETAIL GU-03).
- ④ 102.9A - 6" GRAVITY SEWER PIPE (SDR-35 PVC). BACKFILL TRENCH WITH NATIVE MATERIALS MEETING 103.16 EARTH BACKFILL MATERIAL.
- ⑤ 102/103/104 - INSTALL NEW 4" SEWER SERVICE TAP TO PROPERTY LINE (SEE CITY OF GRAND JUNCTION TYPICAL SERVICE "Y" CONNECTION).
- ⑥ 212 - REMOVE AND REPLACE SOD.
- ⑦ 104 - INSTALL CLAY CUT-OFF WALL.
- ⑧ CONTRACTOR IS RESPONSIBLE FOR REPAIR COSTS ASSOCIATED WITH ANY/ALL DAMAGE TO PRIVATE PROPERTY BEHIND RIGHT-OF-WAY LINE AND/OR LIMITS OF CONSTRUCTION SHOWN ON PLANS.

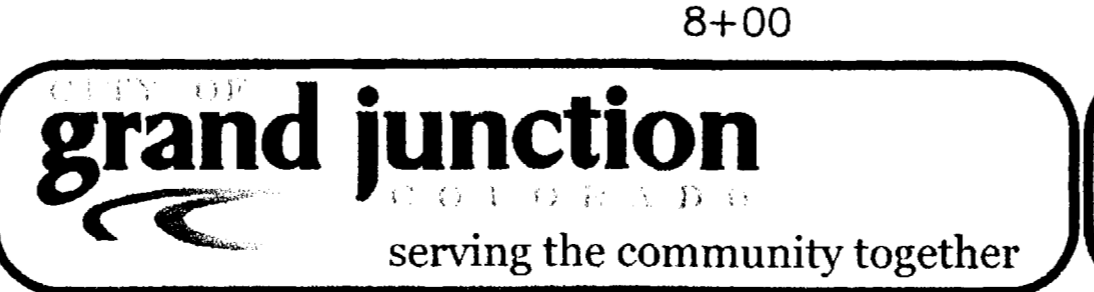


NOTE: NOTIFY AFFECTED UTILITY VENDOR 48 HOURS PRIOR TO EXCAVATIONS THAT WILL EXPOSE UTILITY LINES. THE COVER SHEET WILL HAVE A LISTING OF UTILITY VENDORS AND TELEPHONE NUMBERS.

REVISION	DESCRIPTION	DATE
1	SEWER TAP RELOCATION	1-8-04
2	MANHOLE RELOCATION	2-5-04
3	INVERT ADJUSTMENT	2-5-04

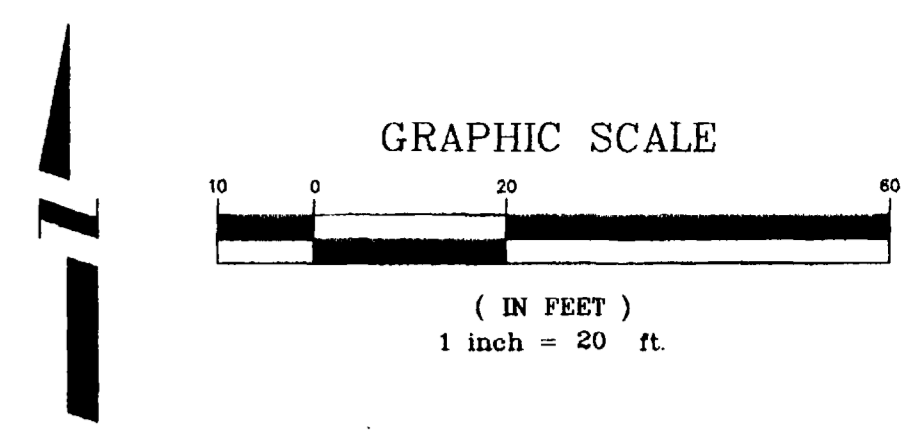
DRAWN BY	DPW	DATE	2003
DESIGNED BY	DD	DATE	2003
CHECKED BY	DD	DATE	2003
APPROVED BY		DATE	

SCALE	
PLAN	1"=20'
PROFILE	1"=20'
VERT.	1"=5'



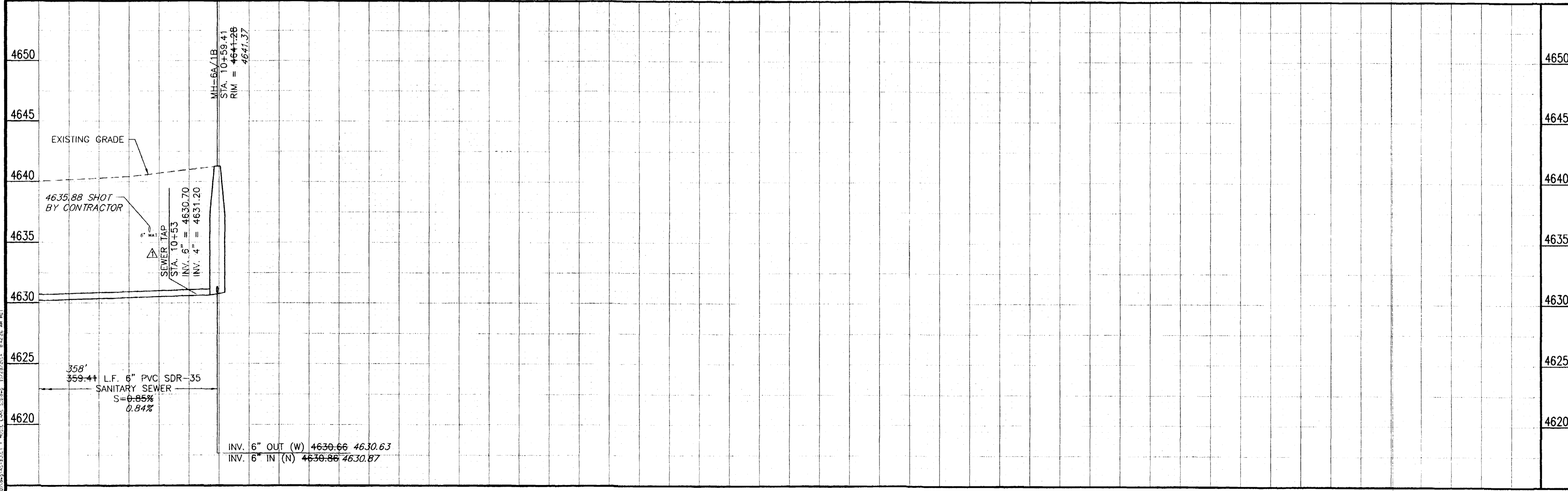
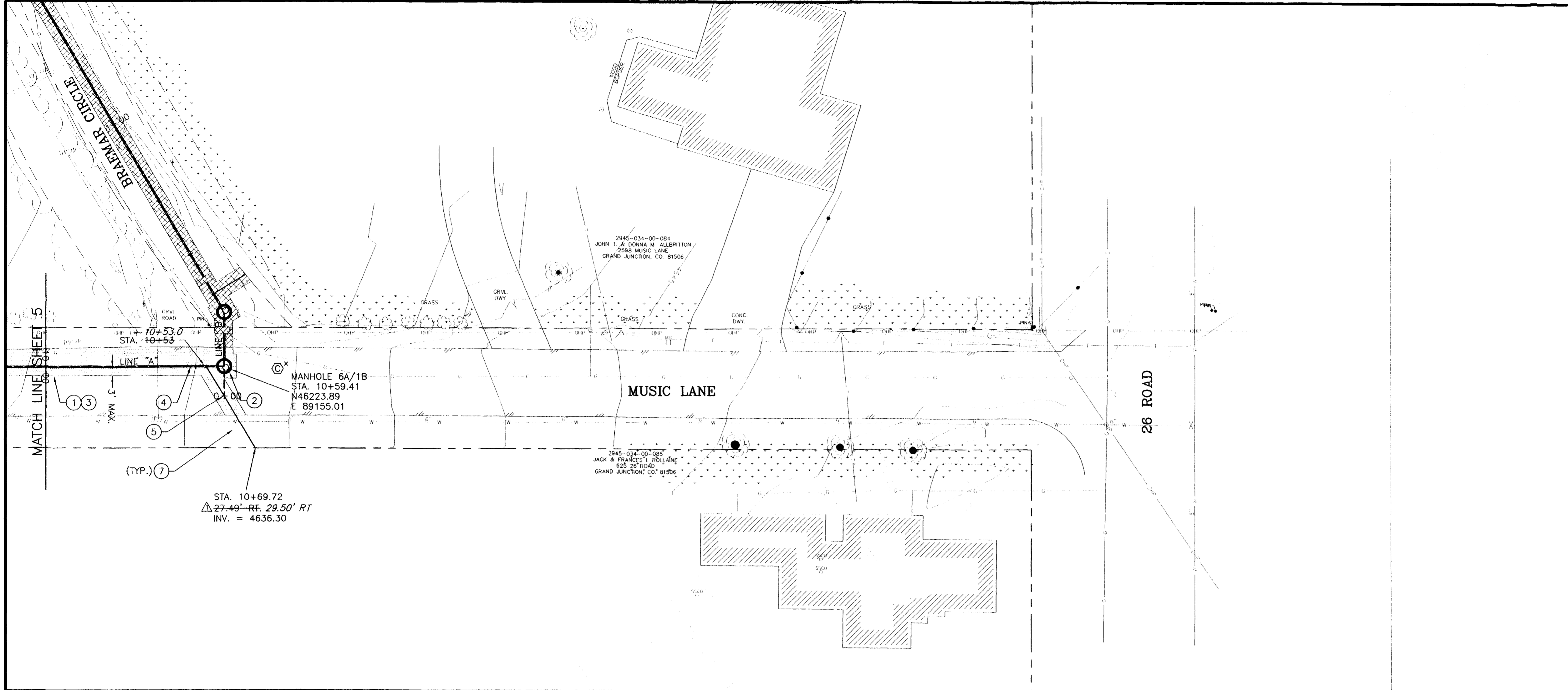
PUBLIC WORKS AND UTILITIES ENGINEERING DIVISION

MUSIC LANE SEWER IMPROVEMENT DISTRICT
LINE A - STA. 5+00 TO STA. 10+00



CONSTRUCTION NOTES

- ① 103.3 - ASPHALT REMOVAL: CUT AND REMOVE PAVEMENT AS SHOWN. GENERALLY WIDTH TO INSTALL MANHOLES WILL BE 8' CENTERED ON THE MANHOLE AND SQUARED OFF AS SHOWN. FOR MAIN LINE REMOVAL WIDTH WILL BE 6' MINIMUM AND 8' MAXIMUM CENTERED ON THE PIPE. SERVICE TRENCH WIDTH SHALL BE 6' MAXIMUM.
- ② 102.11 - 48" DIA. SANITARY SEWER MANHOLE (SEE CITY OF GRAND JUNCTION STANDARD DETAIL SS-02).
- ③ 103.18 - PAVEMENT REPLACEMENT:
304.00 - CDOT CLASS-6 AGGREGATE BASE COURSE, SAME THICKNESS AS EXISTING (6" MIN.), COMPACTED TO 95% AASHTO T-180.
401.00 - HOT BITUMINOUS PAVEMENT (GRADING SX) MATCH EXISTING THICKNESS (3" MIN.). (SEE CITY OF GRAND JUNCTION STANDARD DETAIL GU-03).
- ④ 102.9A - 6" GRAVITY SEWER PIPE (SDR-35 PVC). BACKFILL TRENCH WITH NATIVE MATERIALS MEETING 103.16 EARTH BACKFILL MATERIAL.
- ⑤ 102/103/104 - INSTALL NEW 4" SEWER SERVICE TAP TO PROPERTY LINE (SEE CITY OF GRAND JUNCTION TYPICAL SERVICE "Y" CONNECTION).
- ⑥ 304 - REGRADE GRAVEL ROAD WITH CLASS 6 ABC, 6" DEPTH, INSTALLED AND COMPACTED TO 95% AASHTO T-99.
- ⑦ CONTRACTOR IS RESPONSIBLE FOR REPAIR COSTS ASSOCIATED WITH ANY/ALL DAMAGE TO PRIVATE PROPERTY BEHIND RIGHT-OF-WAY LINE AND/OR LIMITS OF CONSTRUCTION SHOWN ON PLANS.



NOTE: NOTIFY AFFECTED UTILITY VENDOR 48 HOURS PRIOR TO EXCAVATIONS THAT WILL EXPOSE UTILITY LINES. THE COVER SHEET WILL HAVE A LISTING OF UTILITY VENDORS AND TELEPHONE NUMBERS.

10+00 11+00 12+00 13+00 14+00 15+00

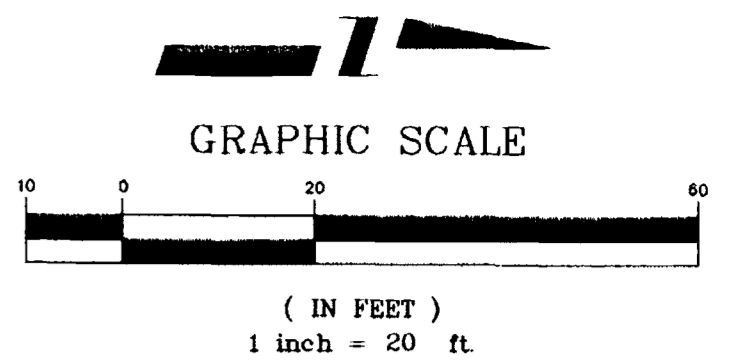
REVISION	DESCRIPTION	DATE
REVISION Δ	RELOCATION AND INVERT ADJUSTMENT	2-6-04
REVISION Δ		
REVISION Δ		
REVISION Δ		

DRAWN BY	DPW	DATE	2003
DESIGNED BY	DD	DATE	2003
CHECKED BY	DD	DATE	2003
APPROVED BY		DATE	

SCALE	
PLAN	1"=20'
PROFILE	1"=20'
VERT.	1"=5'

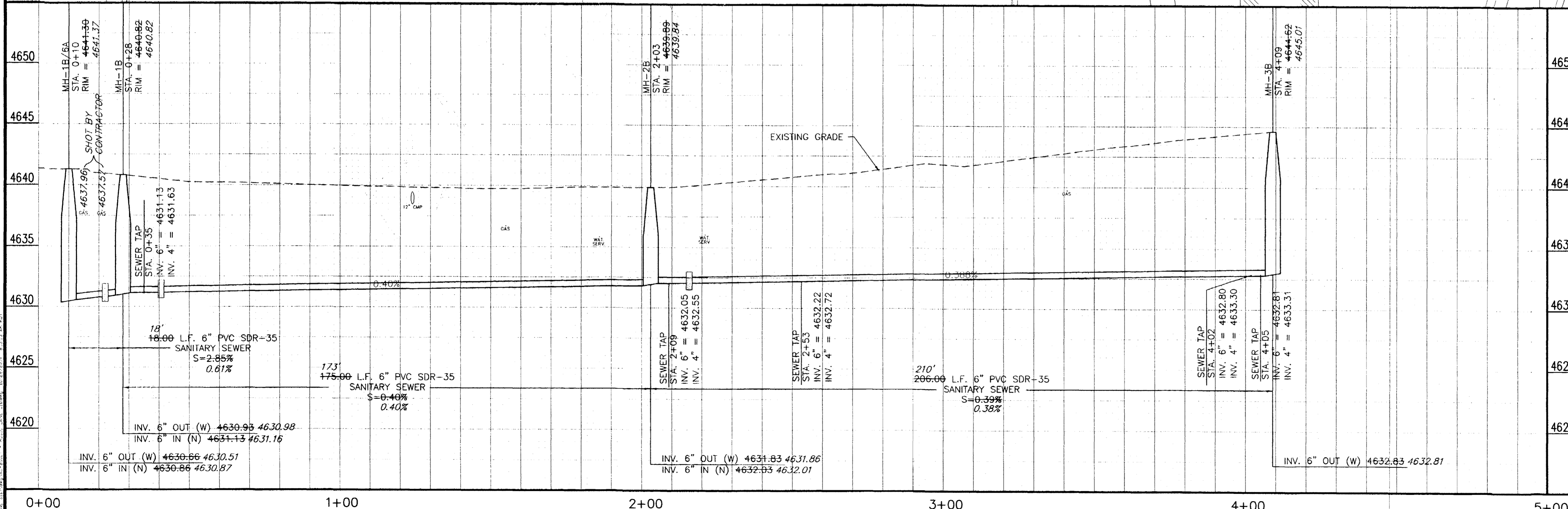
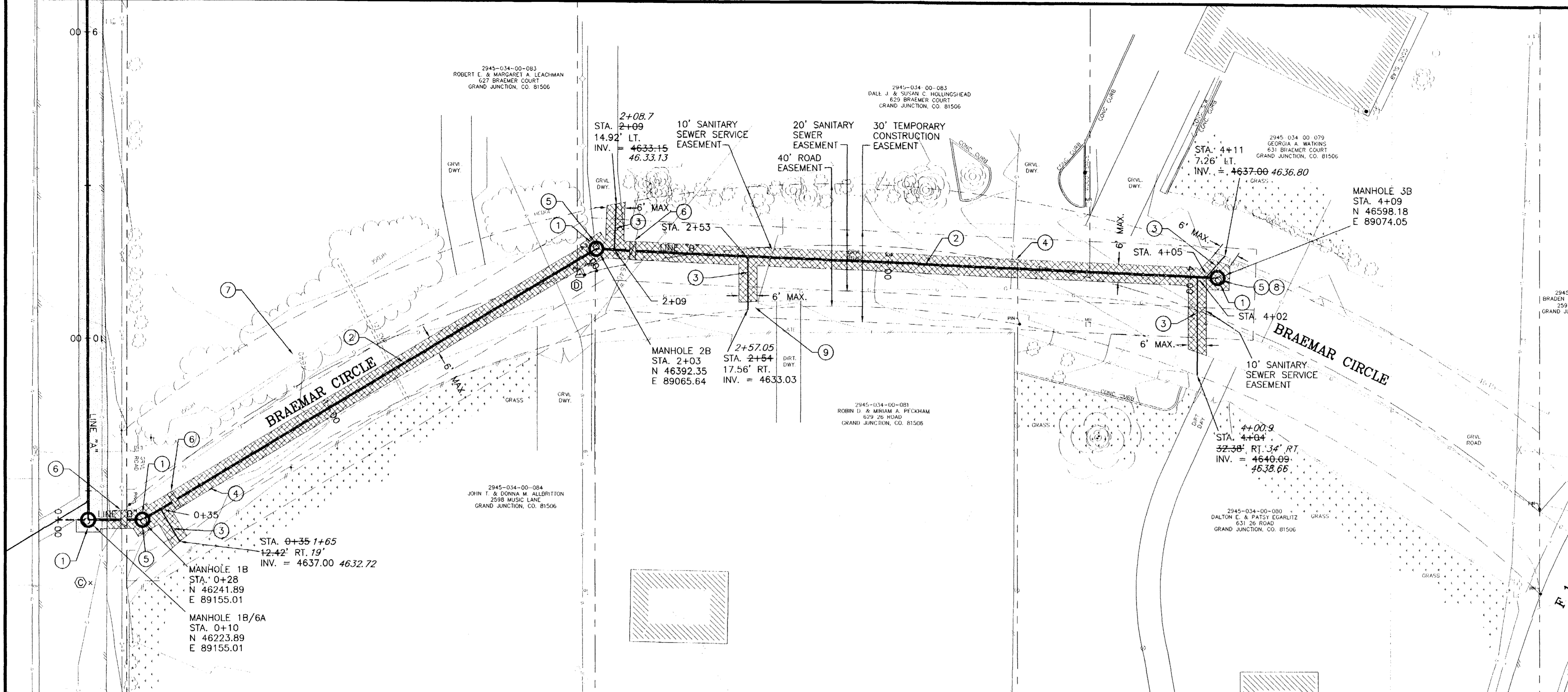
**PUBLIC WORKS
AND UTILITIES
ENGINEERING DIVISION**

**MUSIC LANE
SEWER IMPROVEMENT DISTRICT
LINE A - STA. 10+00 TO STA. 15+00**



CONSTRUCTION NOTES

- ① 102.11 - 48" DIA. SANITARY SEWER MANHOLE (SEE CITY OF GRAND JUNCTION STANDARD DETAIL SS-02).
- ② 102.9A - 6" GRAVITY SEWER PIPE (SDR-35 PVC). BACKFILL TRENCH WITH NATIVE MATERIALS MEETING 103.16 EARTH BACKFILL MATERIAL.
- ③ 102/103/104 - INSTALL NEW 4" SEWER SERVICE TAP TO PROPERTY LINE (SEE CITY OF GRAND JUNCTION TYPICAL SERVICE "Y" CONNECTION).
- ④ 304 - REGRADE GRAVEL ROAD WITH CLASS 6 ABC, 6" DEPTH INSTALLED AND COMPACTED TO 95% AASHTO T-99.
- ⑤ 104.2C - INCLUDE 12"x12" CONCRETE COLLAR W/#4 REBAR HOOP AROUND RING AND COVER.
- ⑥ 104 - INSTALL CLAY CUT-OFF WALL.
- ⑦ PROTECT IN PLACE ALL EXISTING LANDSCAPING AND VEGETATION.
- ⑧ DEAD END MANHOLE.
- ⑨ CONTRACTOR IS RESPONSIBLE FOR REPAIR COSTS ASSOCIATED WITH ANY/ALL DAMAGE TO PRIVATE PROPERTY BEHIND RIGHT-OF-WAY LINE AND/OR LIMITS OF CONSTRUCTION SHOWN ON PLANS.



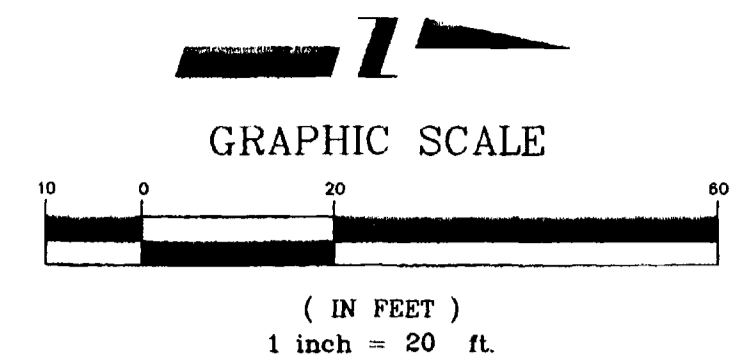
NOTE: NOTIFY AFFECTED UTILITY VENDOR 48 HOURS PRIOR TO EXCAVATIONS THAT WILL EXPOSE UTILITY LINES. THE COVER SHEET WILL HAVE A LISTING OF UTILITY VENDORS AND TELEPHONE NUMBERS.

REVISION Δ	DATE	DRAWN BY	DPW	DATE	2003
REVISION Δ		DESIGNED BY	DD	DATE	2003
REVISION Δ		CHECKED BY	DD	DATE	2003
REVISION Δ		APPROVED BY		DATE	

grand junction
 serving the community together

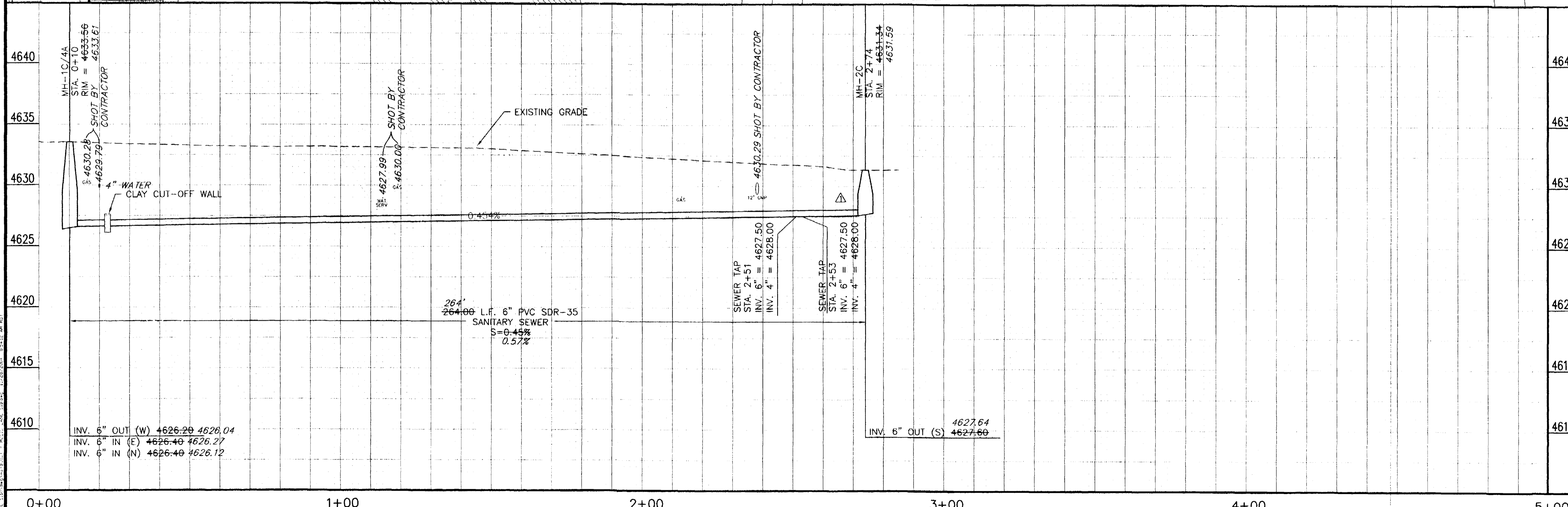
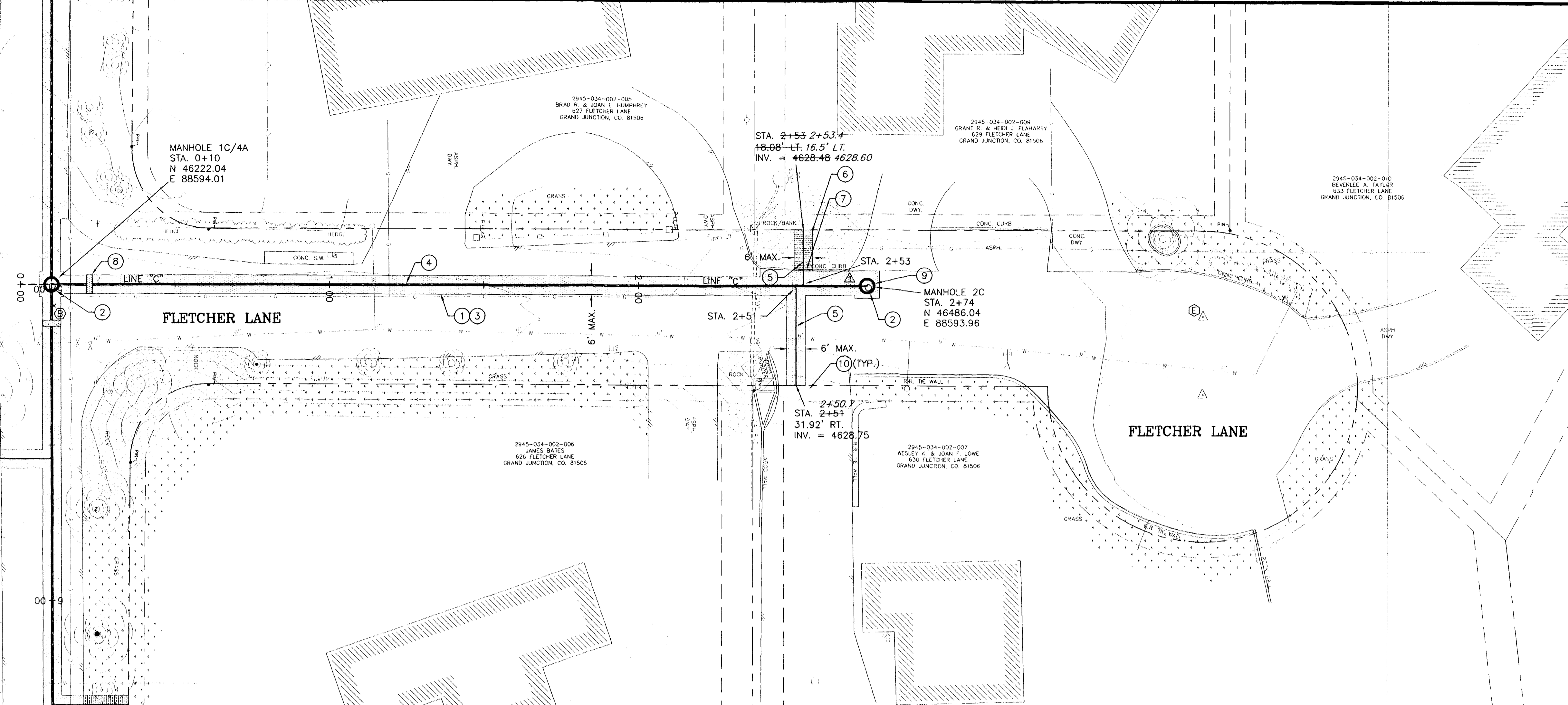
PUBLIC WORKS AND UTILITIES ENGINEERING DIVISION

MUSIC LANE SEWER IMPROVEMENT DISTRICT
 LINE B - STA. 0+00 TO STA. 5+00



CONSTRUCTION NOTES

- ① 103.3 - ASPHALT REMOVAL: CUT AND REMOVE PAVEMENT AS SHOWN. GENERALLY WIDTH TO INSTALL MANHOLES WILL BE 8' CENTERED ON THE MANHOLE AND SQUARED OFF AS SHOWN. FOR MAIN LINE REMOVAL WIDTH WILL BE 6' MINIMUM AND 8' MAXIMUM CENTERED ON THE PIPE. SERVICE TRENCH WIDTH SHALL BE 6' MAXIMUM.
- ② 102.11 - 48" DIA. SANITARY SEWER MANHOLE (SEE CITY OF GRAND JUNCTION STANDARD DETAIL SS-02).
- ③ 103.18 - PAVEMENT REPLACEMENT:
304.00 - CDOT CLASS-6 AGGREGATE BASE COURSE. SAME THICKNESS AS EXISTING (6" MIN.).
401.00 - HOT BITUMINOUS PAVEMENT (GRADING SX) MATCH EXISTING THICKNESS (3" MIN.). (SEE CITY OF GRAND JUNCTION STANDARD DETAIL GU-03).
- ④ 102.9A - 6" GRAVITY SEWER PIPE (SDR-35 PVC). BACKFILL TRENCH WITH NATIVE MATERIALS MEETING 103.16 EARTH BACKFILL MATERIAL.
- ⑤ 102/103/104 - INSTALL NEW 4" SEWER SERVICE TAP TO PROPERTY LINE (SEE CITY OF GRAND JUNCTION TYPICAL SERVICE "Y" CONNECTION).
- ⑥ 102 - REMOVE AND REPLACE DECORATIVE ROCK.
- ⑦ 102 - REMOVE AND REPLACE CONCRETE CURB.
- ⑧ 104 - INSTALL CLAY CUT-OFF WALL.
- ⑨ DEAD END MANHOLE
- ⑩ CONTRACTOR IS RESPONSIBLE FOR REPAIR COSTS ASSOCIATED WITH ANY/ALL DAMAGE TO PRIVATE PROPERTY BEHIND RIGHT-OF-WAY LINE AND/OR LIMITS OF CONSTRUCTION SHOWN ON PLANS.

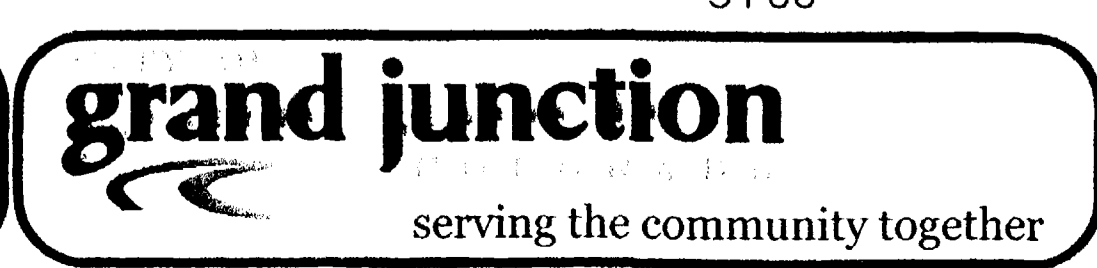


NOTE: NOTIFY AFFECTED UTILITY VENDOR 48 HOURS PRIOR TO EXCAVATIONS THAT WILL EXPOSE UTILITY LINES. THE COVER SHEET WILL HAVE A LISTING OF UTILITY VENDORS AND TELEPHONE NUMBERS.

REVISION	DESCRIPTION	DATE
1	MANHOLE AND SEWER TAP RELOCATION	1-8-04

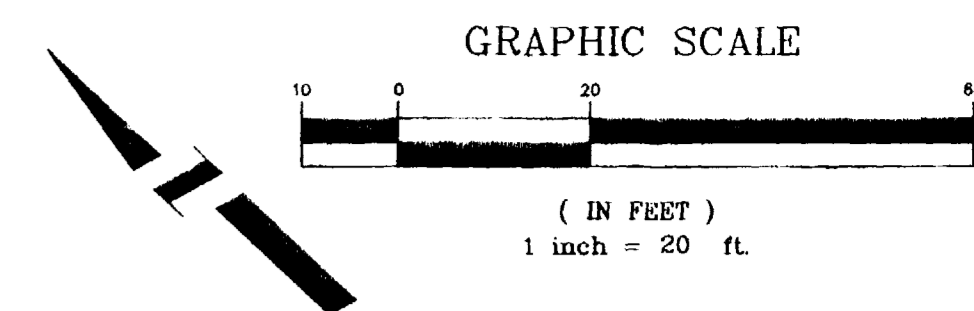
DRAWN BY DPW DATE 2003
 DESIGNED BY DD DATE 2003
 CHECKED BY DD DATE 2003
 APPROVED BY _____ DATE _____

SCALE
 PLAN HORIZ. 1"=20' HORIZ. 1"=20'
 PROFILE VERT. 1"=5'

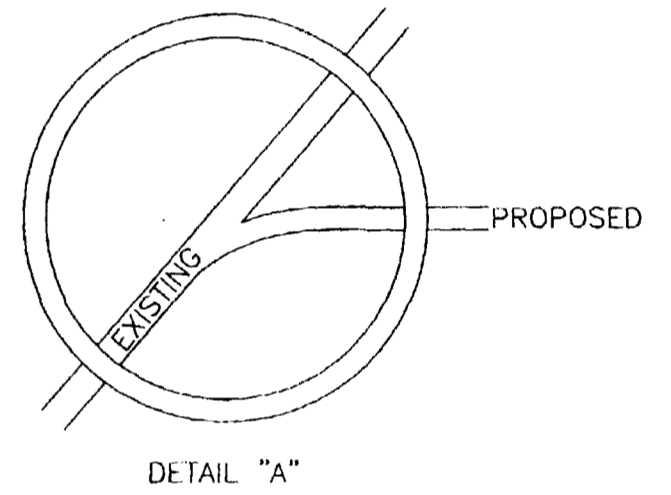


**PUBLIC WORKS
 AND UTILITIES
 ENGINEERING DIVISION**

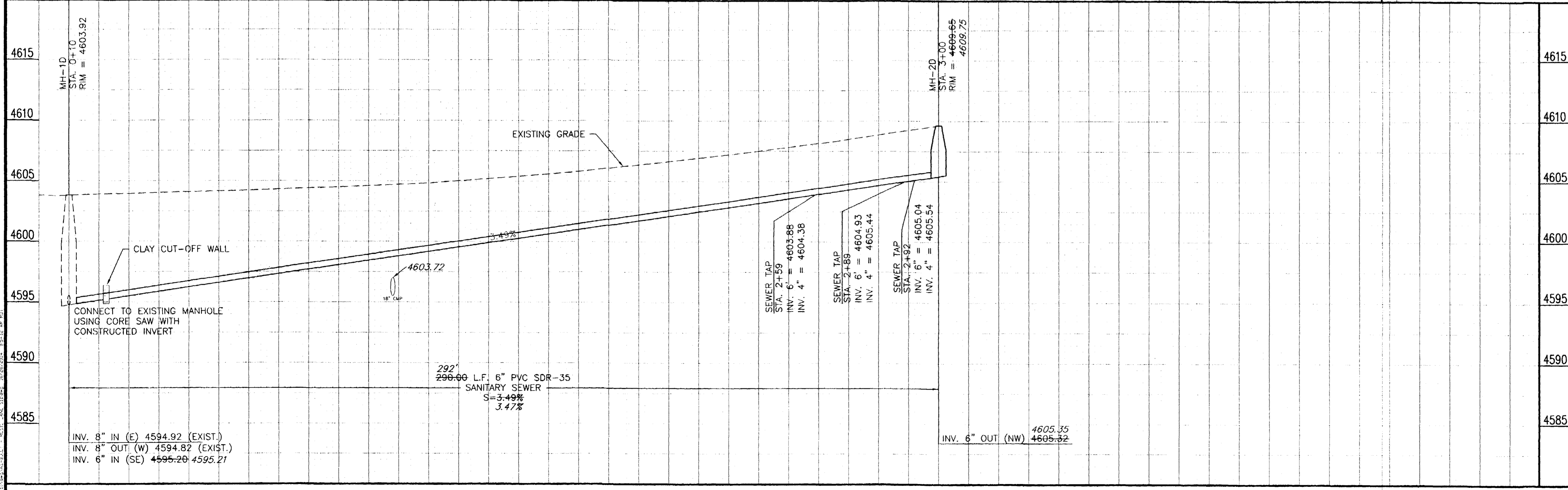
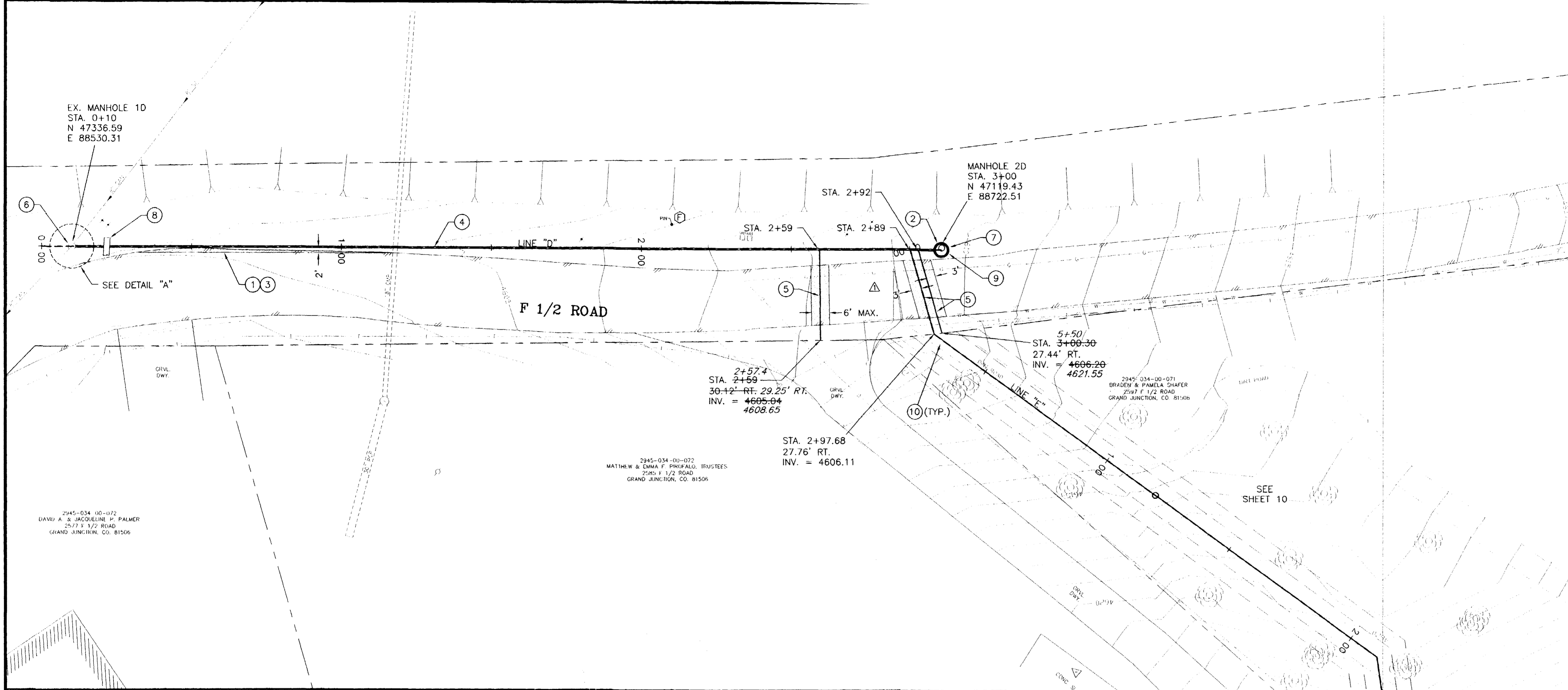
**MUSIC LANE
 SEWER IMPROVEMENT DISTRICT
 LINE C - STA. 0+00 TO STA. 5+00**



- CONSTRUCTION NOTES**
- 103.3 - ASPHALT REMOVAL: CUT AND REMOVE PAVEMENT AS SHOWN. GENERALLY WIDTH TO INSTALL MANHOLES WILL BE 8' CENTERED ON THE MANHOLE AND SQUARED OFF AS SHOWN. FOR MAIN LINE REMOVAL WIDTH WILL BE 6' MINIMUM AND 8' MAXIMUM CENTERED ON THE PIPE. SERVICE TRENCH WIDTH SHALL BE 6' MAXIMUM.
 - 102.11 - 48" DIA. SANITARY SEWER MANHOLE (SEE CITY OF GRAND JUNCTION STANDARD DETAIL SS-02).
 - 103.18 - PAVEMENT REPLACEMENT:
304.00 - CDOT CLASS-6 AGGREGATE BASE COURSE. SAME THICKNESS AS EXISTING (6" MIN.). COMPACTED TO 95% AASHTO T-180.
401.00 - HOT BITUMINOUS PAVEMENT (GRADING SX) MATCH EXISTING THICKNESS (3" MIN.). (SEE CITY OF GRAND JUNCTION STANDARD DETAIL GU-03).
 - 102.9A - 6" GRAVITY SEWER PIPE (SDR-35 PVC). BACKFILL TRENCH WITH NATIVE MATERIALS MEETING 103.16 EARTH BACKFILL MATERIAL.
 - 102/103/104 - INSTALL NEW 4" SEWER SERVICE TAP TO PROPERTY LINE (SEE CITY OF GRAND JUNCTION TYPICAL SERVICE "Y" CONNECTION).
 - 102/103/104 - CONNECT TO EXISTING MANHOLE. MATCH INVERT OF NEW LINE TO SPRINGLINE OF EXISTING LINE AT THE JUNCTION INSIDE MANHOLE. CONSTRUCT NEW INVERT TO ARC SUCH THAT NEW INVERT IS TANGENT TO EXISTING. (SEE DETAIL "A" BELOW).



- 104.2C - INCLUDE 12"x12" CONCRETE COLLAR W/#4 REBAR HOOP AROUND RING AND COVER.
- 104 - INSTALL CLAY CUT-OFF WALL.
- DEAD END MANHOLE.
- CONTRACTOR IS RESPONSIBLE FOR REPAIR COSTS ASSOCIATED WITH ANY/ALL DAMAGE TO PRIVATE PROPERTY BEHIND RIGHT-OF-WAY LINE AND/OR LIMITS OF CONSTRUCTION SHOWN ON PLANS.



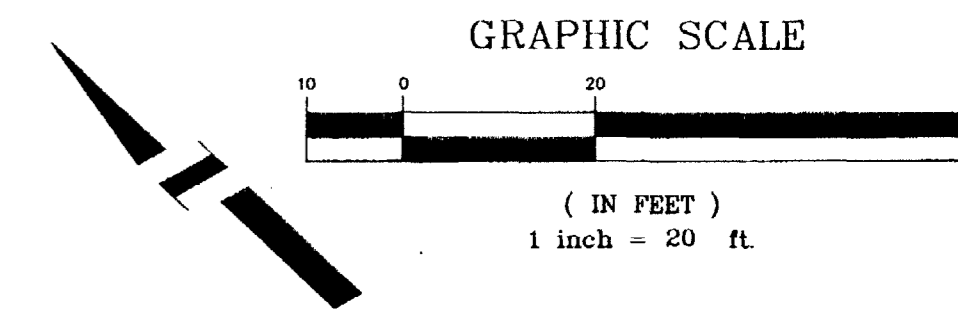
NOTE: NOTIFY AFFECTED UTILITY VENDOR 48 HOURS PRIOR TO EXCAVATIONS THAT WILL EXPOSE UTILITY LINES. THE COVER SHEET WILL HAVE A LISTING OF UTILITY VENDORS AND TELEPHONE NUMBERS.

0+00	1+00	2+00	3+00	4+00	5+00
DESCRIPTION	DATE	DRAWN BY	DPW	DATE	2003
REVISION Δ REALIGNED SEWER SERVICE	1-8-04	DESIGNED BY	DD	DATE	2003
REVISION Δ		CHECKED BY	DD	DATE	2003
REVISION Δ		APPROVED BY		DATE	

grand junction
serving the community together

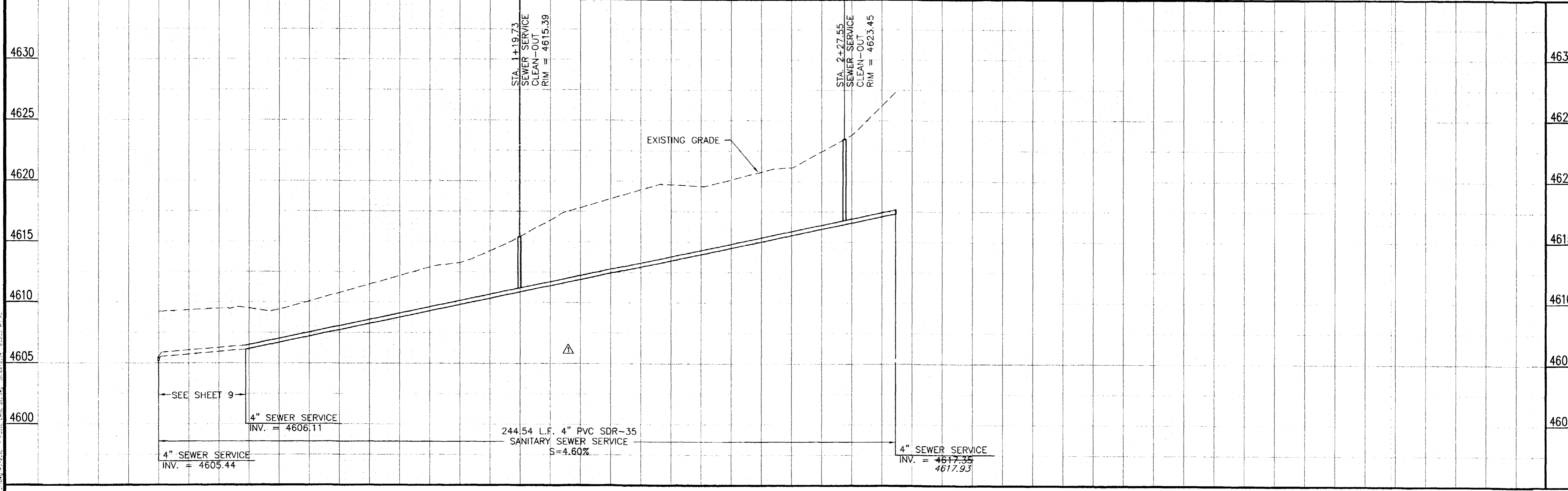
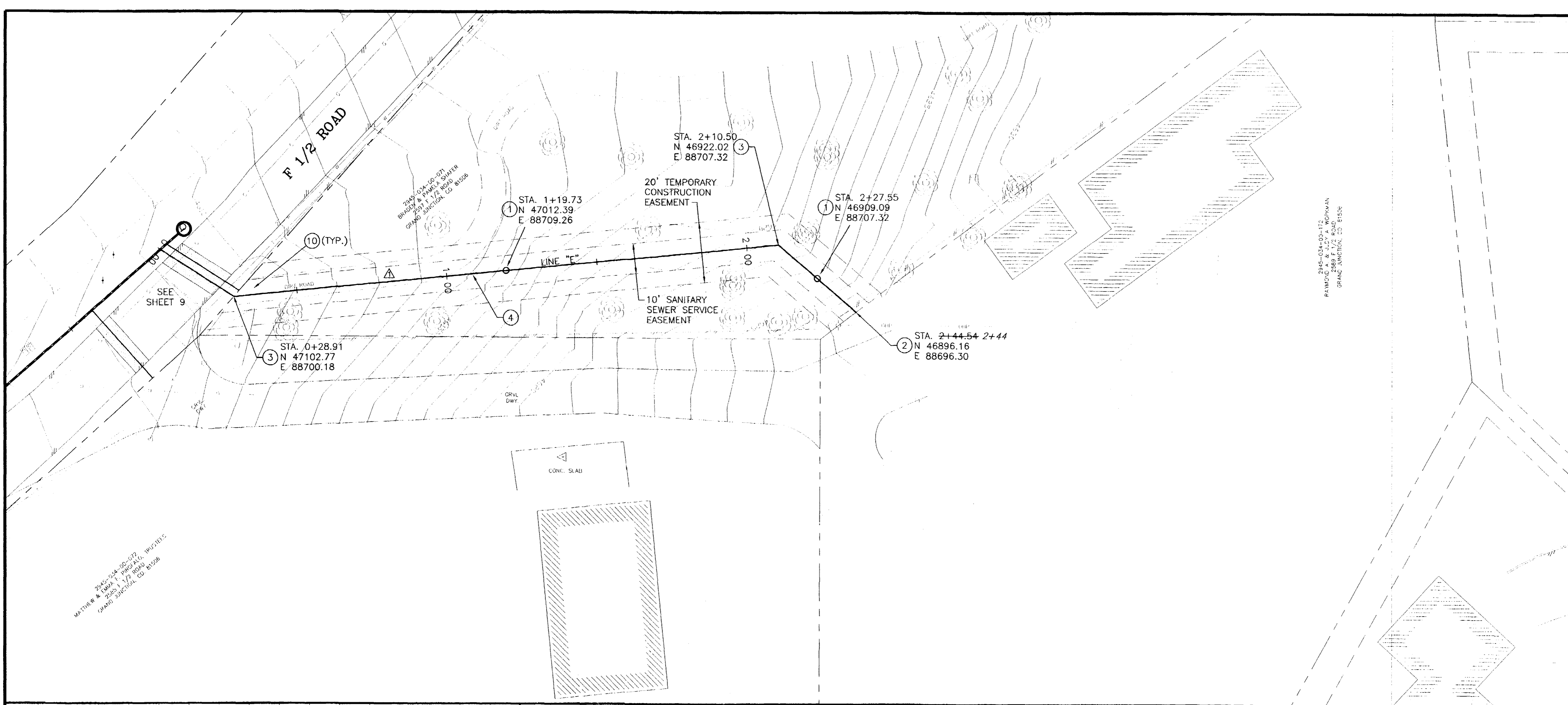
PUBLIC WORKS AND UTILITIES ENGINEERING DIVISION

MUSIC LANE SEWER IMPROVEMENT DISTRICT
LINE D - STA. 0+00 TO STA. 5+00



CONSTRUCTION NOTES

- ① 102 - INSTALL 2-WAY SANITARY SEWER SERVICE CLEANOUT WITH IRRIGATION CONTROL BOX (COST INCIDENTAL TO SERVICE INSTALLATION).
- ② 102 - PROVIDE 4" PVC CAP FOR SANITARY SEWER SERVICE LINE.
- ③ 102 - 4" x 45' BEND.
- ④ 102.9A - 4" GRAVITY SEWER SERVICE PIPE (SDR-35 PVC). BACKFILL TRENCH WITH NATIVE MATERIALS MEETING 103.16 EARTH BACKFILL MATERIAL.
- ⑤ CONTRACTOR IS RESPONSIBLE FOR REPAIR COSTS ASSOCIATED WITH ANY/ALL DAMAGE TO PRIVATE PROPERTY BEHIND RIGHT-OF-WAY LINE AND/OR LIMITS OF CONSTRUCTION SHOWN ON PLANS.



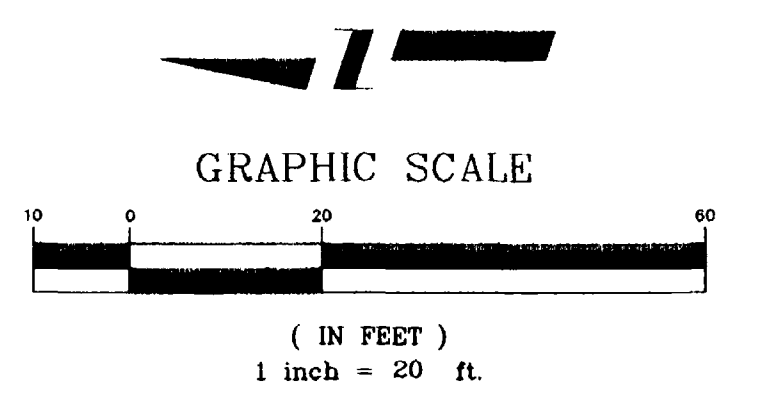
NOTE: NOTIFY AFFECTED UTILITY VENDOR 48 HOURS PRIOR TO EXCAVATIONS THAT WILL EXPOSE UTILITY LINES. THE COVER SHEET WILL HAVE A LISTING OF UTILITY VENDORS AND TELEPHONE NUMBERS.

DESCRIPTION	DATE	DRAWN BY	DPW	DATE	2003
REVISION Δ REALIGNED SEWER SERVICE	1-8-04	DESIGNED BY	DD	DATE	2003
REVISION Δ		CHECKED BY	DD	DATE	2003
REVISION Δ		APPROVED BY		DATE	

grand junction
serving the community together

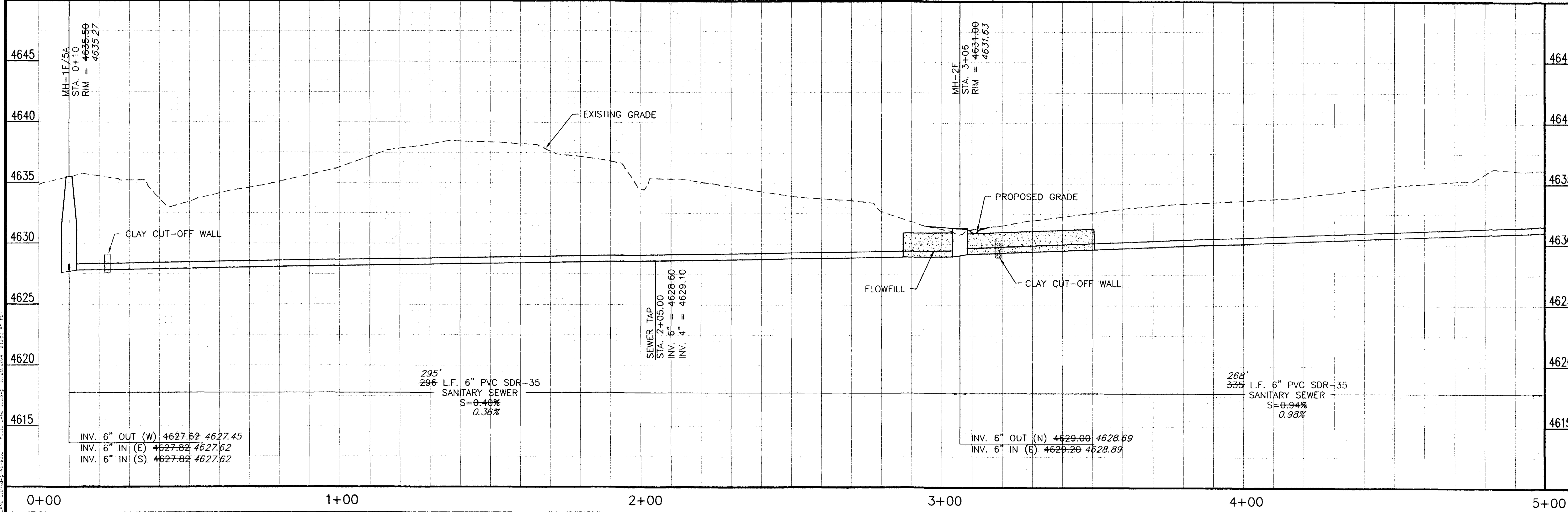
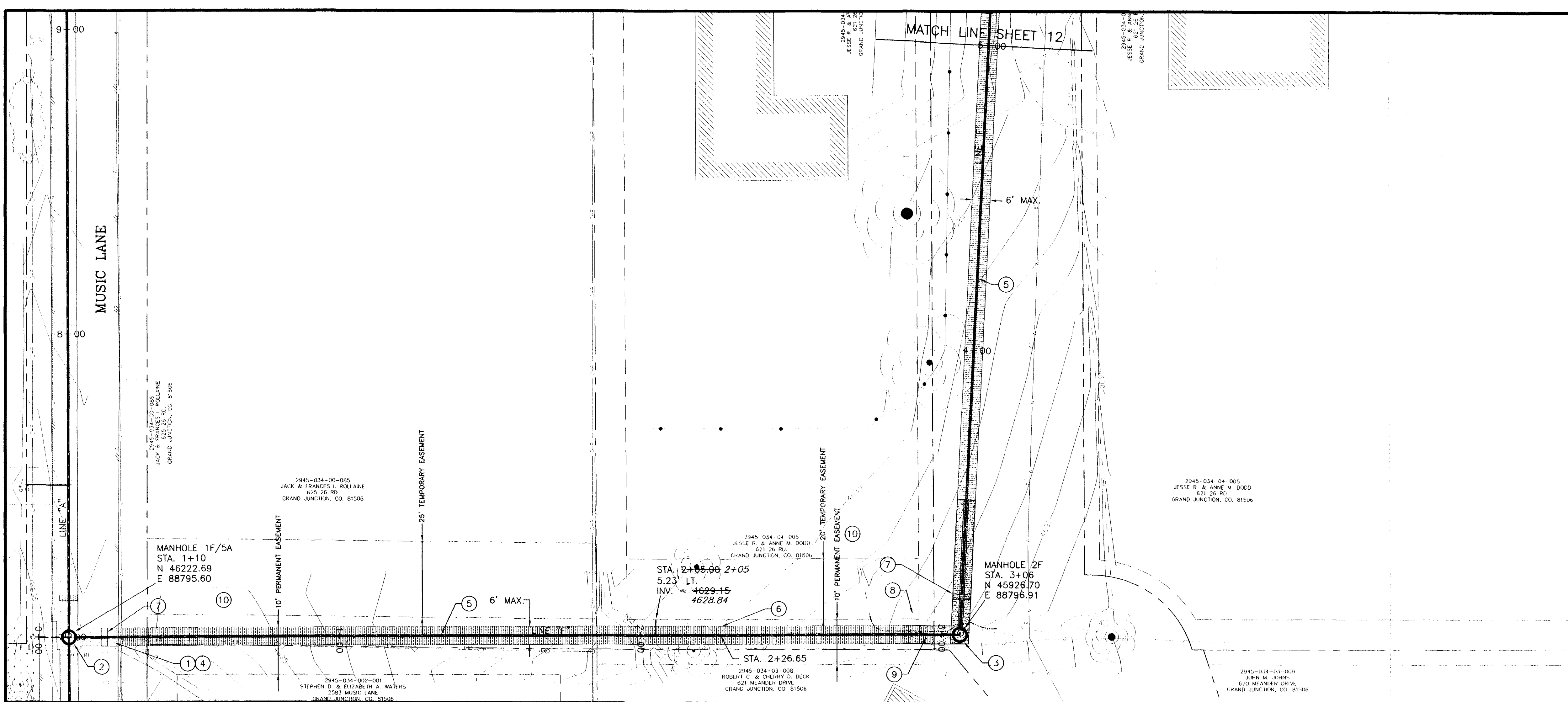
PUBLIC WORKS AND UTILITIES ENGINEERING DIVISION

MUSIC LANE SEWER IMPROVEMENT DISTRICT
LINE E - STA. 0+00 TO STA. 4+00



CONSTRUCTION NOTES

- ① 103.3 - ASPHALT REMOVAL: CUT AND REMOVE PAVEMENT AS SHOWN. GENERALLY WIDTH TO INSTALL MANHOLES WILL BE 8' CENTERED ON THE MANHOLE AND SQUARED OFF AS SHOWN. FOR MAIN LINE REMOVAL WIDTH WILL BE 6' MINIMUM AND 8' MAXIMUM CENTERED ON THE PIPE. SERVICE TRENCH WIDTH SHALL BE 6' MAXIMUM.
- ② 102.11 - 48" DIA. SANITARY SEWER MANHOLE (SEE CITY OF GRAND JUNCTION STANDARD DETAIL SS-02).
- ③ 102.11 - 48" DIA. SHALLOW SANITARY SEWER MANHOLE: CAST IN PLACE BASE, 8" LID SLAB, RING & COVER AND CONCRETE COLLAR. (SEE STD. DETAIL SS-03)
- ④ 103.18 - PAVEMENT REPLACEMENT:
304.00 - CDOT CLASS-6 AGGREGATE BASE COURSE. SAME THICKNESS AS EXISTING (6" MIN.).
401.00 - HOT BITUMINOUS PAVEMENT (GRADING SX) MATCH EXISTING THICKNESS (3" MIN.). (SEE CITY OF GRAND JUNCTION STANDARD DETAIL GU-03).
- ⑤ 102.9A - 6" GRAVITY SEWER PIPE (SDR-35 PVC). BACKFILL TRENCH WITH NATIVE MATERIALS MEETING 103.16 EARTH BACKFILL MATERIAL.
- ⑥ 102/103/104 - INSTALL NEW 4" SEWER SERVICE TAP TO PROPERTY LINE (SEE CITY OF GRAND JUNCTION TYPICAL SERVICE "Y" CONNECTION).
- ⑦ 104 - INSTALL CLAY CUT-OFF WALL.
- ⑧ REGRADE 46 L.F. OF DRAINAGE DITCH.
- ⑨ FLOWFILL FROM SPRINGLINE TO 0.5' BELOW FINISHED GRADE.
- ⑩ CONTRACTOR IS RESPONSIBLE FOR REPAIR COSTS ASSOCIATED WITH ANY/ALL DAMAGE TO PRIVATE PROPERTY BEHIND RIGHT-OF-WAY LINE AND/OR LIMITS OF CONSTRUCTION SHOWN ON PLANS.



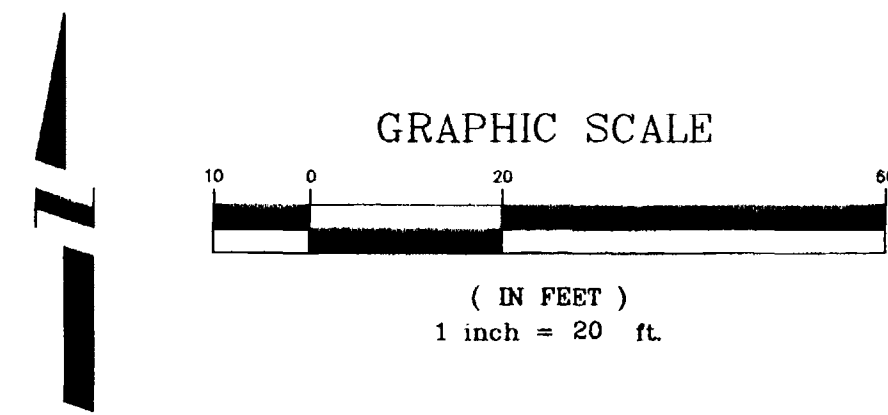
NOTE: NOTIFY AFFECTED UTILITY VENDOR 48 HOURS PRIOR TO EXCAVATIONS THAT WILL EXPOSE UTILITY LINES. THE COVER SHEET WILL HAVE A LISTING OF UTILITY VENDORS AND TELEPHONE NUMBERS.

REVISION	DESCRIPTION	DATE	DRAWN BY	DPW	DATE	2003
REVISION			DESIGNED BY	DD	DATE	2003
REVISION			CHECKED BY	DD	DATE	2003
REVISION			APPROVED BY		DATE	

grand junction
serving the community together

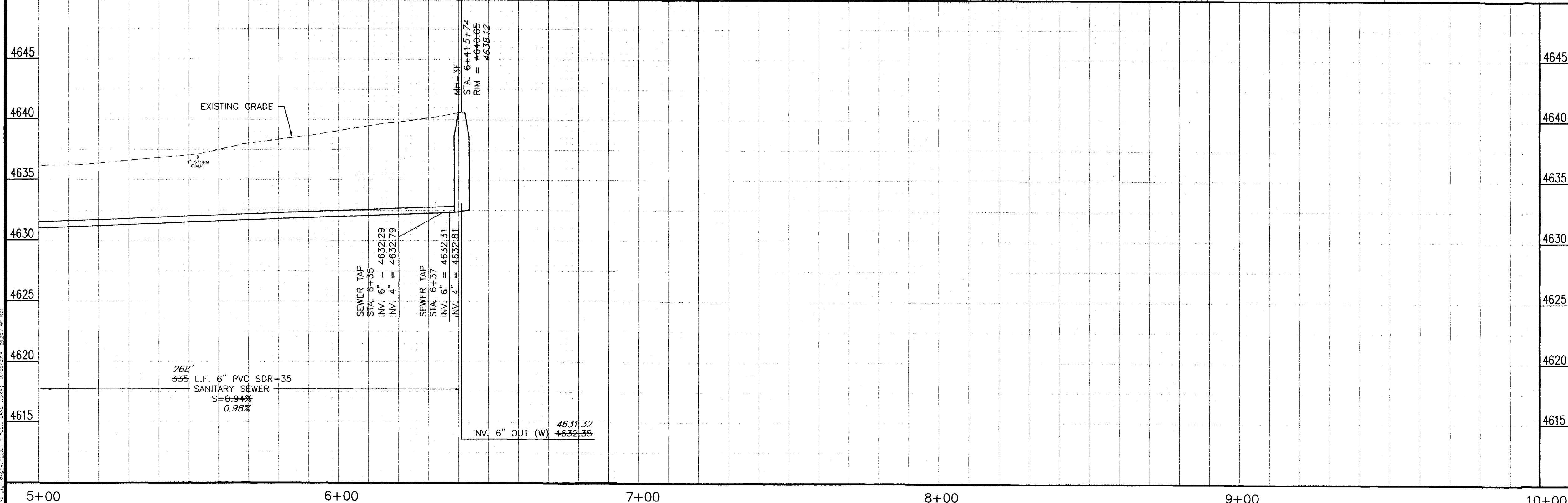
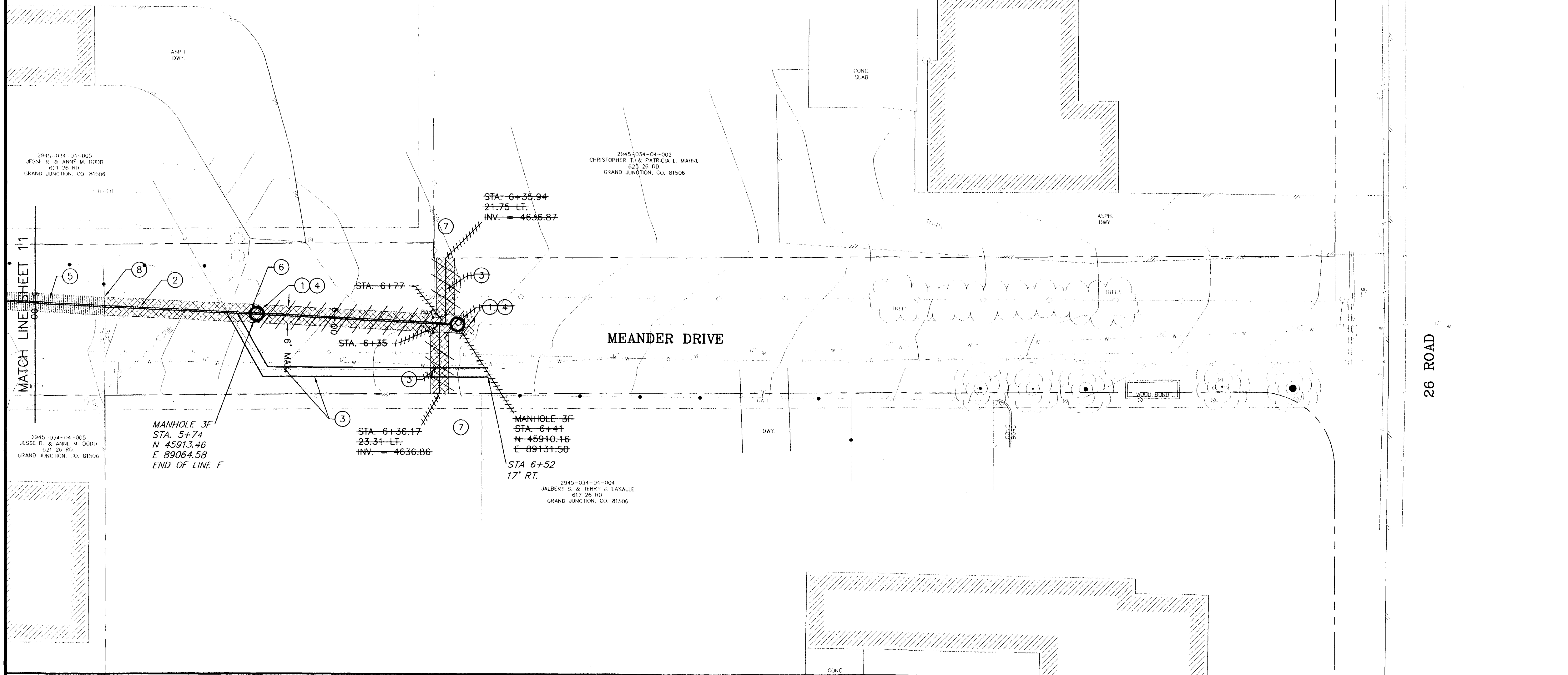
PUBLIC WORKS AND UTILITIES ENGINEERING DIVISION

MUSIC LANE SEWER IMPROVEMENT DISTRICT
LINE F - STA. 0+00 TO STA. 5+00



CONSTRUCTION NOTES

- ① 102.11 - 48" DIA. SANITARY SEWER MANHOLE (SEE CITY OF GRAND JUNCTION STANDARD DETAIL SS-02).
- ② 102.9A - 6" GRAVITY SEWER PIPE (SDR-35 PVC). BACKFILL TRENCH WITH NATIVE MATERIALS MEETING 103.16 EARTH BACKFILL MATERIAL.
- ③ 102/103/104 - INSTALL NEW 4" SEWER SERVICE TAP TO PROPERTY LINE (SEE CITY OF GRAND JUNCTION TYPICAL SERVICE "Y" CONNECTION).
- ④ DEAD END MANHOLE
- ⑤ STOCKPILE SURFACE ROAD BASE WHERE PRESENT AND REPLACE AFTER BACKFILLING.
- ⑥ 304 - REGRADE GRAVEL ROAD WITH 6" CLASS 6 ABC, INSTALLED AND COMPACTED TO 95% AASHTO T-99.
- ⑦ CONTRACTOR IS RESPONSIBLE FOR REPAIR COSTS ASSOCIATED WITH ANY/ALL DAMAGE TO PRIVATE PROPERTY BEHIND RIGHT-OF-WAY LINE AND/OR LIMITS OF CONSTRUCTION SHOWN ON PLANS.
- ⑧ 210.04 - REMOVE AND RESET FENCE AS NEEDED TO FACILITATE SEWER INSTALLATION



NOTE: NOTIFY AFFECTED UTILITY VENDOR 48 HOURS PRIOR TO EXCAVATIONS THAT WILL EXPOSE UTILITY LINES. THE COVER SHEET WILL HAVE A LISTING OF UTILITY VENDORS AND TELEPHONE NUMBERS.

REVISION	DESCRIPTION	DATE	DRAWN BY	DPW	DATE	2003
REVISION			DESIGNED BY	DD	DATE	2003
REVISION			CHECKED BY	DD	DATE	2003
REVISION			APPROVED BY		DATE	

grand junction
serving the community together

SCALE
PLAN 1"=20'
PROFILE 1"=20'
HORIZ. 1"=20'
VERT. 1"=5'

PUBLIC WORKS AND UTILITIES ENGINEERING DIVISION

MUSIC LANE SEWER IMPROVEMENT DISTRICT
LINEF - STA. 5+00 TO STA. 10+00