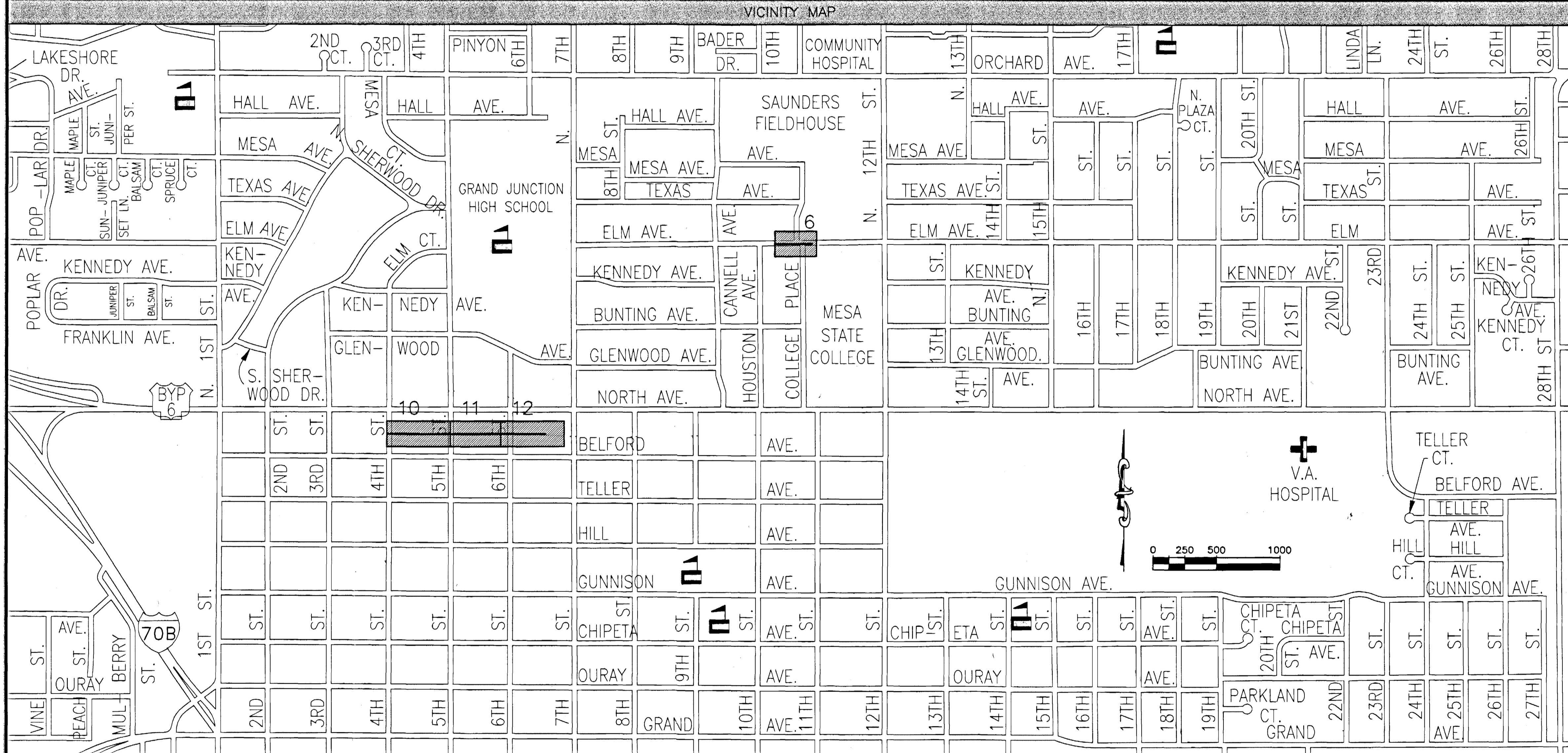


# 1998 SEWER LINES REPLACEMENT PROJECT

## City of Grand Junction, Colorado

**NOT ASBUILT**



VICINITY MAP		SHEET INDEX	
SHEET #	SHEET DESCRIPTION		
1	COVER SHEET		
2	QUANTITIES SUMMARY		
3	DRAFTING STANDARDS & ABBREVIATIONS		
4	SPECIAL DETAILS		
6	ELM, CANNELL TO COLLEGE PLACE		
10	NORTH AVENUE, BELFORD, 4th TO 6th		
11	NORTH AVENUE, BELFORD, 4th TO 6th		
12	NORTH AVENUE, BELFORD, 4th TO 6th		
EXHIBIT "I"	STANDARD SANITARY SEWER DETAILS		

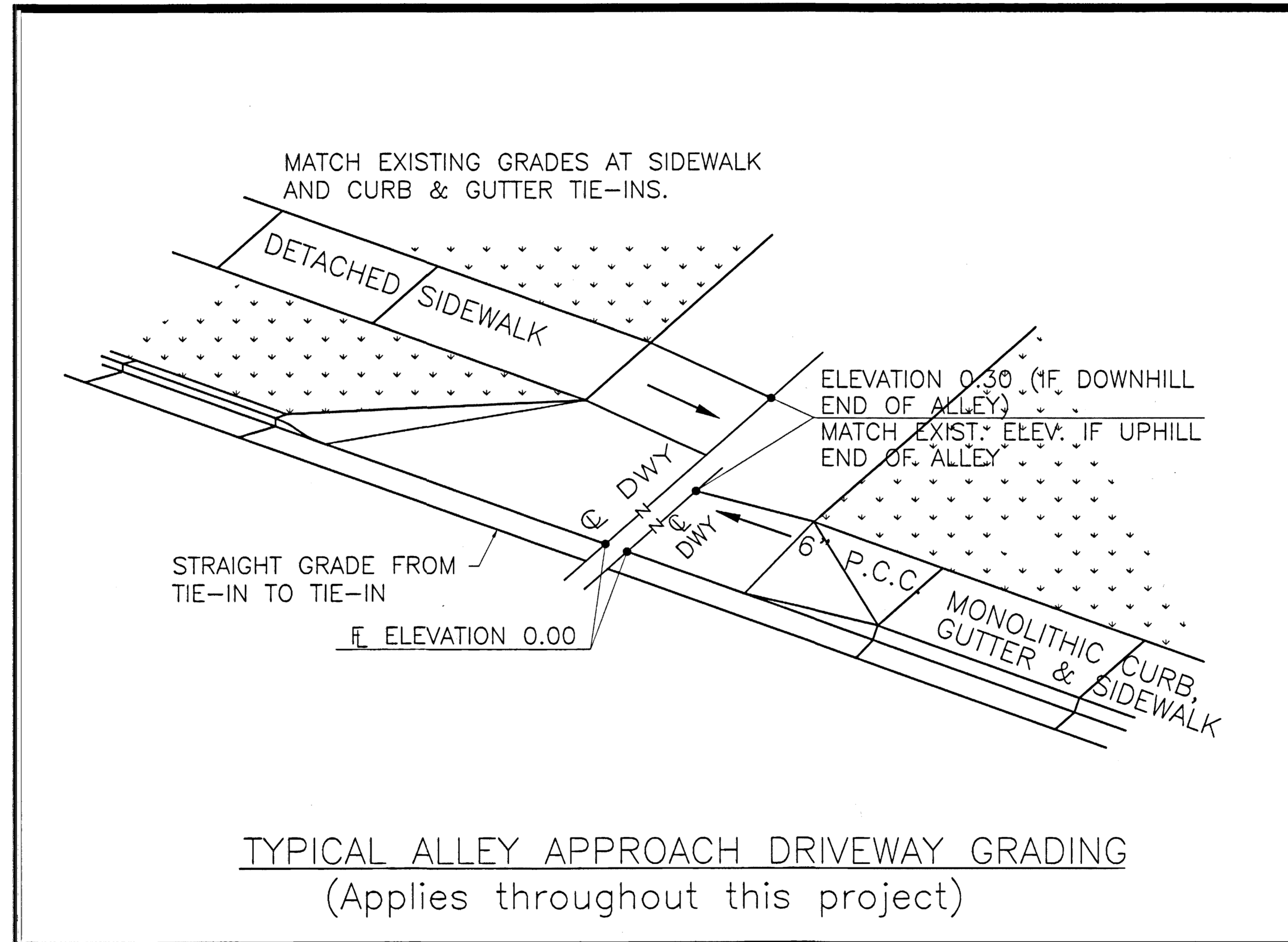
PREPARED BY

**WILLIAMS ENGINEERING**  
 1231 19 Road  
 Fruita, CO 81521-9689  
 (970) 858-1014 Phone  
 (970) 858-1007 FAX

UTILITIES AND AGENCIES							
AGENCY	NAME	POSITION	MAILING ADDRESS	STREET ADDRESS	CITY, STATE	VOICE	FAX
GRAND JUNCTION, CITY OF	TRENT PRALL	PROJECT ENGINEER	250 N. 5th STREET	250 N. 5th STREET	GRAND JUNCTION, CO 81501	244-1590	244-1599
PSCO	JON PRICE	WEST OF 12th ST.		2538 BLICKMAN ROAD	GRAND JUNCTION, CO 81501	244-2693	244-2661
PSCO	JOHN SALAZAR	EAST OF 12th ST.		2538 BLICKMAN ROAD	GRAND JUNCTION, CO 81501	244-2781	244-2661
TCI	GLENN VANCIL		2502 FORESIGHT CIRCLE	2502 FORESIGHT CIRCLE	GRAND JUNCTION, CO 81504	245-8750	245-6803
U.S. WEST	MAX WARD	ENGINEER			GRAND JUNCTION, CO 81504	244-4721	

GENERAL NOTES
(C01) Unless noted otherwise, Standard Details and Specifications and Special Provisions apply.
(C02) Notes numbered between 20 and 99 pertain to Work governed by the City of Grand Junction's standard specifications, as may be modified by Project Contract Documents.
(C03) Notes numbered between 200 and 699 pertain to Work governed by corresponding sections of the CDOT Standard Specifications for Road and Bridge Construction, as may be modified by Owner Standard Specifications and/or Project Contract Documents.
(C04) Notes numbered above 1000 pertain to miscellaneous Work not governed by standard specifications.
(C05) Note numbers preceded with a "C" are informational or general in nature and, as incidental to the Work, are no-pay items.
(C06) Property lines shown are approximate only.

ITEM NO.	NOTE NO.	DESCRIPTION	UNIT	SHT 6	SHT 10	SHT 11	SHT 12	MISC	TOTAL QTY	ACTUAL QTY	COMMENTS
1	20.1	CONSTRUCT 8" SDR 35 PVC SANITARY SEWER.									
1A		IN ALLEYS, INCLUDES 100% IMPORTED BACKFILL (NO ADD'L PAY FOR ITEM 82.1 ALLOWED)	LF		477	409	290		1176		
1B		UNDER STREET PVMT, INCLUDES NATIVE MAT'L BACKFILL. (IF IMPORTED BACKFILL IS REQ'D, PAY WILL BE PER ITEM 82.1)	LF	293	33	33	28		387		
2	21.1	CONNECT THE PROPOSED SEWERLINE TO THE EXISTING MH, AND GROUT SEAL AROUND PIPE.	EA	3	1	4	3		11		
3	24.2	REPLACE ALL EXISTING ACTIVE SEWER SERVICES FROM THE NEW SEWER TAP TO THE ALLEY ROW OR AT 3 FEET MAXIMUM LENGTH IN STREET ROW.									
3A		IN ALLEYS, INCLUDES 100% IMPORTED BACKFILL (NO ADD'L PAY FOR ITEM 82.1 ALLOWED)	LF		308	288	143		739		
4	24.8	INSTALL FULL BODY WYE SEWER TAP AND CONNECT TO ALL ACTIVE EXISTING SEWER SERVICES (INCLUDE WYE, RISER PIPE, AND BEND).	EA		28	26	13		67		
5	81.1	OVEREXCAVATE TRENCH BELOW REQUIRED BEDDING AS DIRECTED BY ENGINEER, DISPOSE OF UNSUITABLE MATERIALS, AND REPLACE WITH GRANULAR STABILIZATION MATERIAL.	CY					50	50		
6	82.1	FURNISH AND INSTALL PIT RUN TRENCH BACKFILL MATERIAL IN STREETS AS DIRECTED BY ENGINEER.	TON					195	195		
7	202.21	REMOVE MANHOLE.	EA			1	1		2		
8	202.37	REMOVE CONCRETE CURB, GUTTER, SIDEWALKS, DRIVEWAYS, PAVEMENT, AND/OR SLABS TO JOINTS OR DIMENSIONS WHERE SHOWN; OTHERWISE, REMOVE AS REQUIRED FOR CONSTRUCTION. SAWCUT AS NECESSARY.	SY		32	10	24		66		
9	202.42	REMOVE ASPHALT PAVEMENT AS REQUIRED FOR CONSTRUCTION.	SY	400	924	453	43		1820		
10	204.1	HAUL CONTAMINATED MATERIAL TO CITY SHOPS.	CY					20	20		
11	300/400.1	CONSTRUCT PAVEMENT STRUCTURE PER SPECIAL PROVISIONS.									
11A		PVMT REPLACEMENT IN ALLEYS	SY		813	409			1222		
11B		PVMT REPLACEMENT IN STREETS	SY	400	111	44	43		598		
12	608.19	REPLACE REMOVED CONCRETE SIDEWALK TO JOINTS AS APPLICABLE, MATCHING GRADES AT TIE-IN. (6" THICK)	SY		19		19		38		
13	608.31	CONSTRUCT CONCRETE DRIVEWAY.	SY			8			8		
14	609.0	CONSTRUCT CONCRETE VALLEY PAN GUTTER.	SY		13	2	5		20		
15	625.3	PROVIDE CONSTRUCTION SURVEYING AND RED-LINED PLANS PER AS-CONSTRUCTED CONDITIONS.	LS					1	1		
16	626.1	PROVIDE ALL MOBILIZATION, BONDS, INSURANCES, AND OTHER INCIDENTALS AND CLEANUP NECESSARY TO PERFORM THE WORK.	LS					1	1		
17	630.1	PROVIDE TRAFFIC CONTROL IN ACCORDANCE WITH GENERAL CONTRACT CONDITIONS.	LS					1	1		
18	1997.1	PROVIDE NEWSLETTERS PER SPECIAL CONDITIONS.	LS					1	1		
19	1999	FORCE ACCOUNT	LS					1	1		



REVISION	DESCRIPTION	DATE	SCALE	PLAN	PROFILE	SECTIONS
REVISION $\Delta$			HORIZONTAL			
REVISION $\Delta$			VERTICAL			

WILLIAMS ENGINEERING  
 1231 19 ROAD, FRUITA, COLORADO 81521-9689  
 (970) 858-1014 PHONE (970) 858-1007 FAX

1998 SEWER LINES  
 REPLACEMENT  
 Special Details

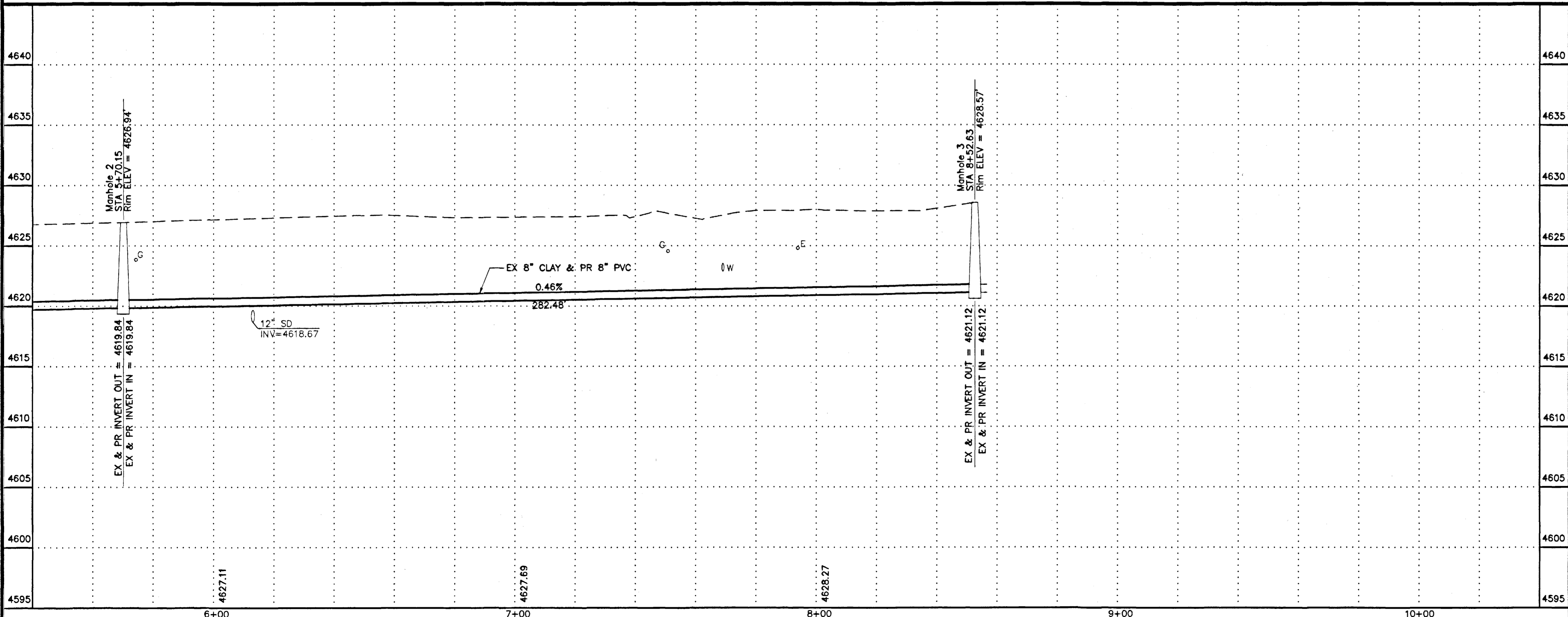
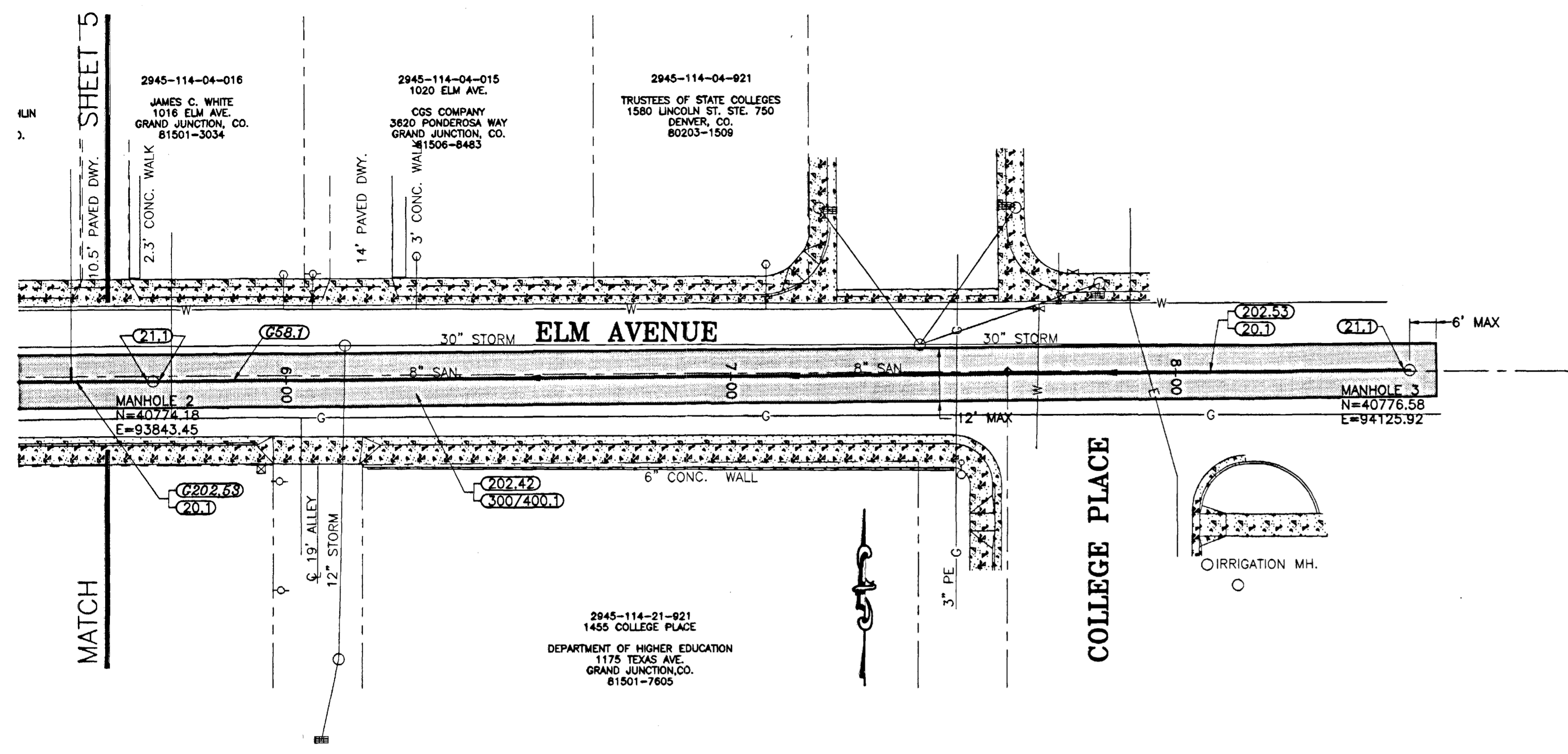
SHEET 4  
 FILENAME  
 98SS-04.DWG

SHADING AND TEXTURE LEGEND

FACILITY OR SURFACE TREATMENT	EXISTING	PROPOSED	REMOVE & REPLACE
ASPHALT PAVEMENT	[Pattern]	[Pattern]	[Pattern]
CONCRETE (C, G, SW AT STREETS)	[Pattern]	[Pattern]	[Pattern]

CONSTRUCTION NOTES

- 20.1 CONSTRUCT 8" SDR 35 PVC SANITARY SEWER.
- 21.1 CONNECT THE PROPOSED SEWERLINE TO THE EXISTING MH, AND GROUT SEAL AROUND PIPE.
- G58.1 CONSTRUCT CUT-OFF WALL PER STANDARD SPECIFICATIONS.
- 202.42 REMOVE ASPHALT PAVEMENT AS REQUIRED FOR CONSTRUCTION.
- G202.53 REMOVE SANITARY SEWER.
- 300/400.1 CONSTRUCT PAVEMENT STRUCTURE PER SPECIAL PROVISIONS.



REVISION	DATE

SCALE	PLAN	PROFILE	SECTIONS
HORIZONTAL	0 10 20 40	0 10 20 40	
VERTICAL		0 2.5 5 10	

WILLIAMS ENGINEERING  
 1231 19 ROAD, FRUITA, COLORADO 81521-9689  
 (970) 858-1014 PHONE (970) 858-1007 FAX

1998 SEWER LINES  
 REPLACEMENT  
 Elm, Cannell to College Place

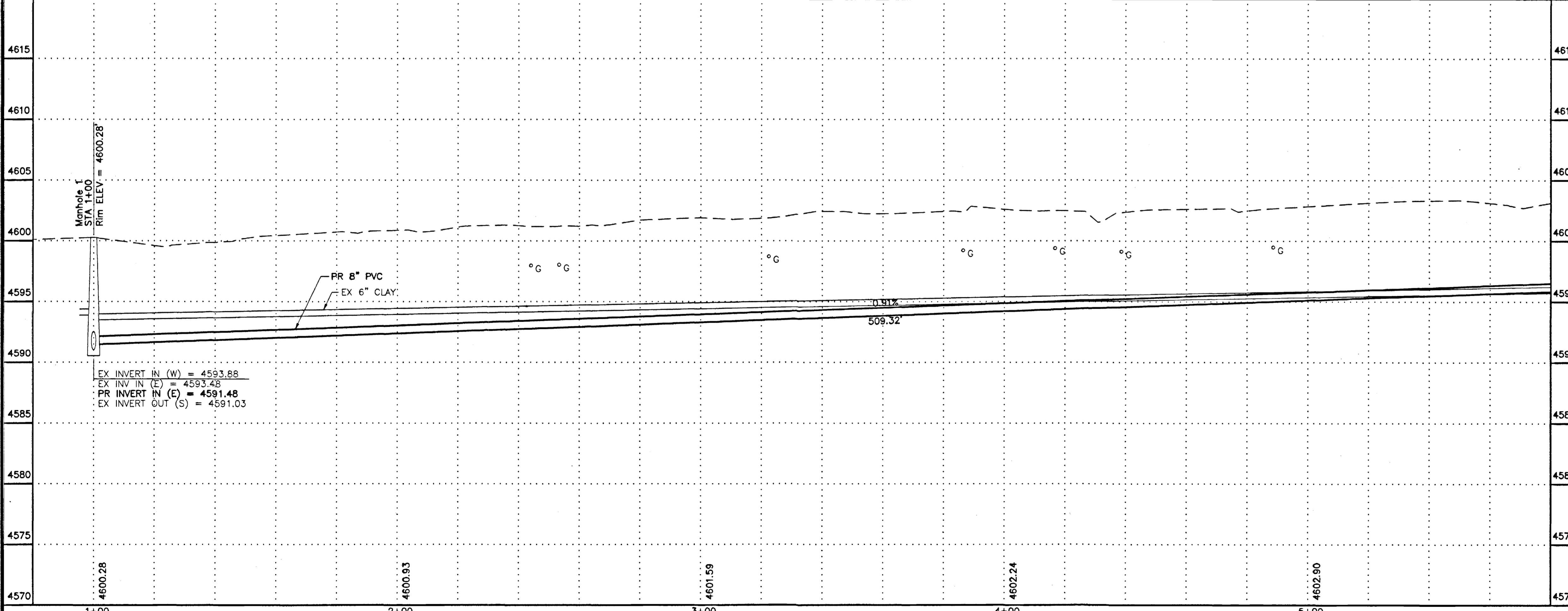
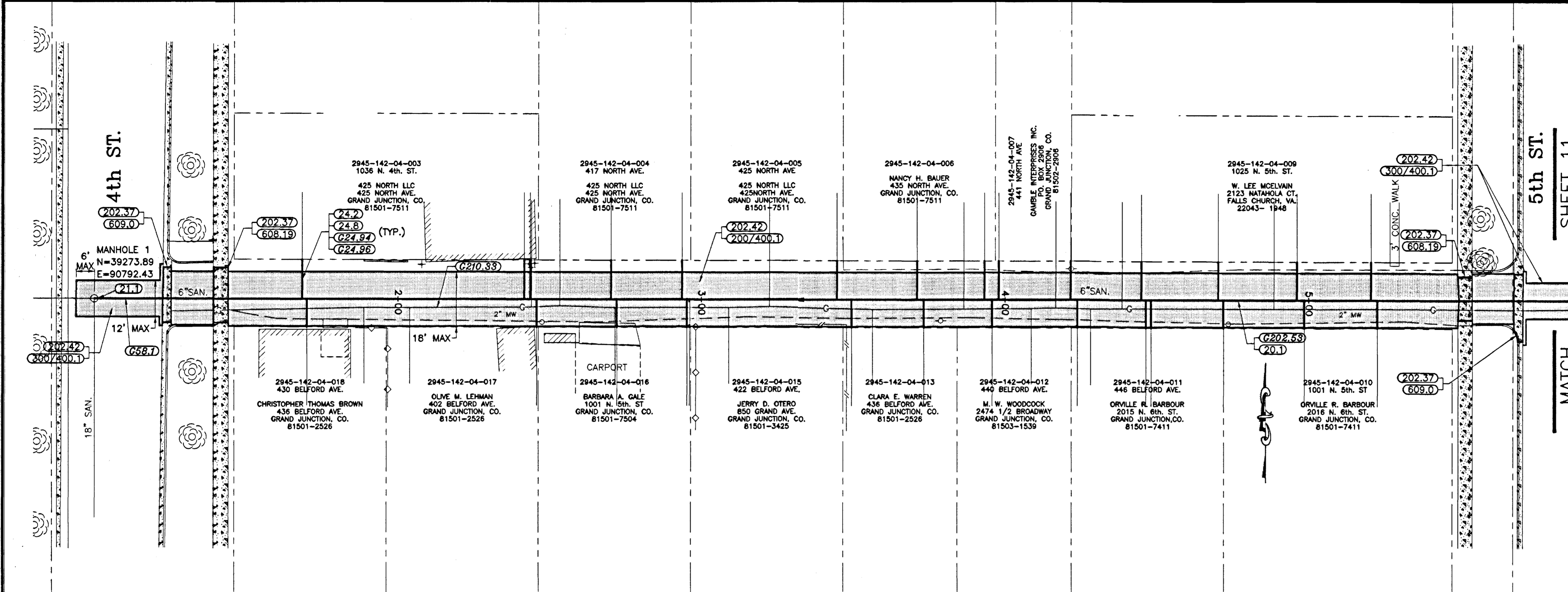
SHEET 6  
 FILENAME  
 SS010201.DWG

SHADING AND TEXTURE LEGEND

FACILITY OR SURFACE TREATMENT	EXISTING	PROPOSED	REMOVE & REPLACE
ASPHALT PAVEMENT	[Pattern]	[Pattern]	[Pattern]
CONCRETE (C, G, SW AT STREETS)	[Pattern]	[Pattern]	[Pattern]

CONSTRUCTION NOTES

- 20.1 CONSTRUCT 8" SDR 35 PVC SANITARY SEWER.
- 21.1 CONNECT THE PROPOSED SEWERLINE TO THE EXISTING MH, AND GROUT SEAL AROUND PIPE.
- 24.2 REPLACE ALL EXISTING ACTIVE SEWER SERVICE FROM THE NEW SEWER TAP TO THE ALLEY ROW OR AT 3 FEET MAXIMUM LENGTH IN STREET ROW.
- 24.8 INSTALL FULL BODY WYE SEWER TAP AND CONNECT TO ALL ACTIVE EXISTING SEWER SERVICES (INCLUDE WYE, RISER PIPE, AND BEND).
- G24.94 NOT ALL SEWER SERVICES MAY BE SHOWN. THE CONTRACTOR SHALL LOCATE ALL ACTIVE SERVICES AND PROVIDE AS-CONSTRUCTED LOCATIONS FOR ALL TAPS. WORK SHALL BE PAID FOR UNDER THE APPROXIMATE BID ITEM.
- G24.96 USE OF DYE IS EFFECTIVE IN LOCATING ACTIVE SEWER TAPS. IF IN DOUBT AS TO WHETHER A TAP IS ACTIVE OR NOT, REPLACE AND RECONNECT.
- G58.1 CONSTRUCT CUT-OFF WALL PER STANDARD SPECIFICATIONS.
- 202.37 REMOVE CONCRETE CURB, GUTTER, SIDEWALKS, DRIVEWAYS, PAVEMENT, AND/OR SLABS TO JOINTS OR DIMENSIONS WHERE SHOWN; OTHERWISE, REMOVE AS REQUIRED FOR CONSTRUCTION. SAWCUT AS NECESSARY.
- 202.42 REMOVE ASPHALT PAVEMENT AS REQUIRED FOR CONSTRUCTION.
- G202.53 REMOVE SANITARY SEWER.
- G210.33 COORDINATE RELOCATION OF GAS LINE.
- 300/400.1 CONSTRUCT PAVEMENT STRUCTURE PER SPECIAL PROVISIONS.
- 608.19 REPLACE REMOVED CONCRETE SIDEWALK TO JOINTS AS APPLICABLE, MATCHING GRADES AT TIE-IN.
- 609.0 CONSTRUCT CONCRETE VALLEY PAN GUTTER.



REVISION	DESCRIPTION	DATE

SCALE	PLAN	PROFILE	SECTIONS
HORIZONTAL	0 10 20 40	0 10 20 40	
VERTICAL		0 2.5 5 10	

**WILLIAMS ENGINEERING**  
 1231 19 ROAD, FRUITA, COLORADO 81521-9689  
 (970) 858-1014 PHONE (970) 858-1007 FAX

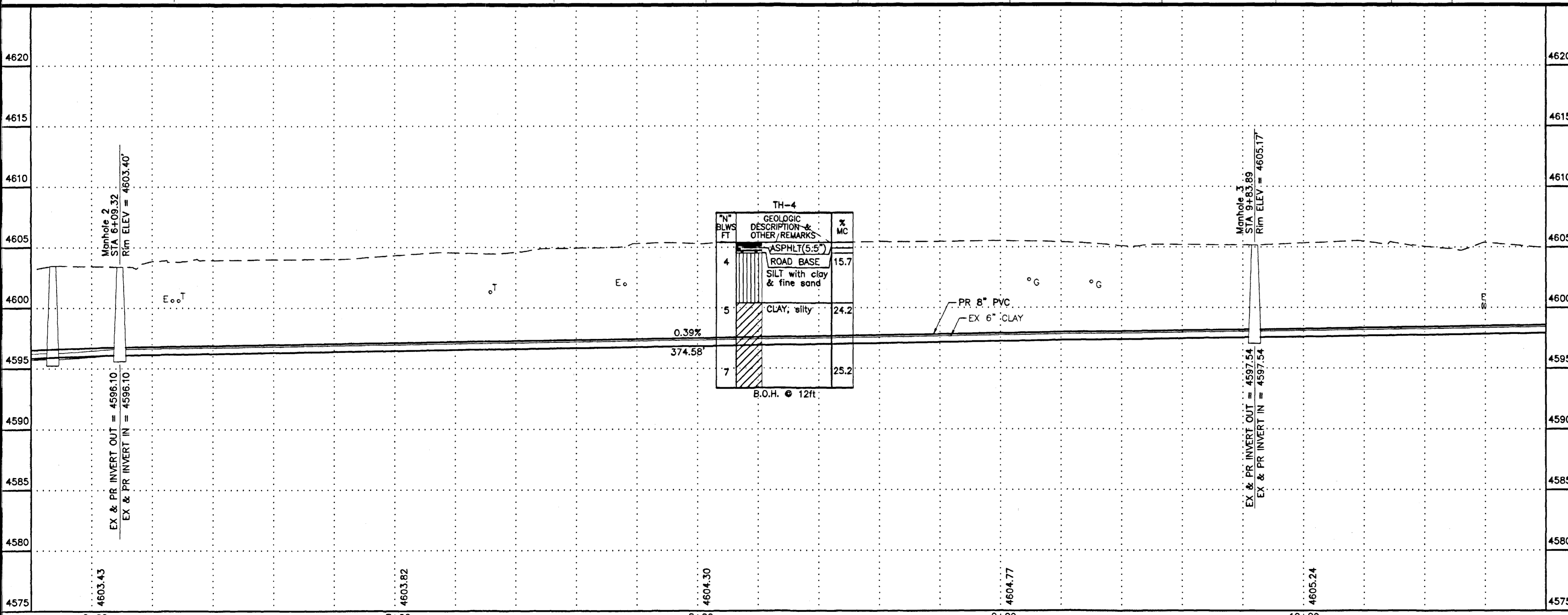
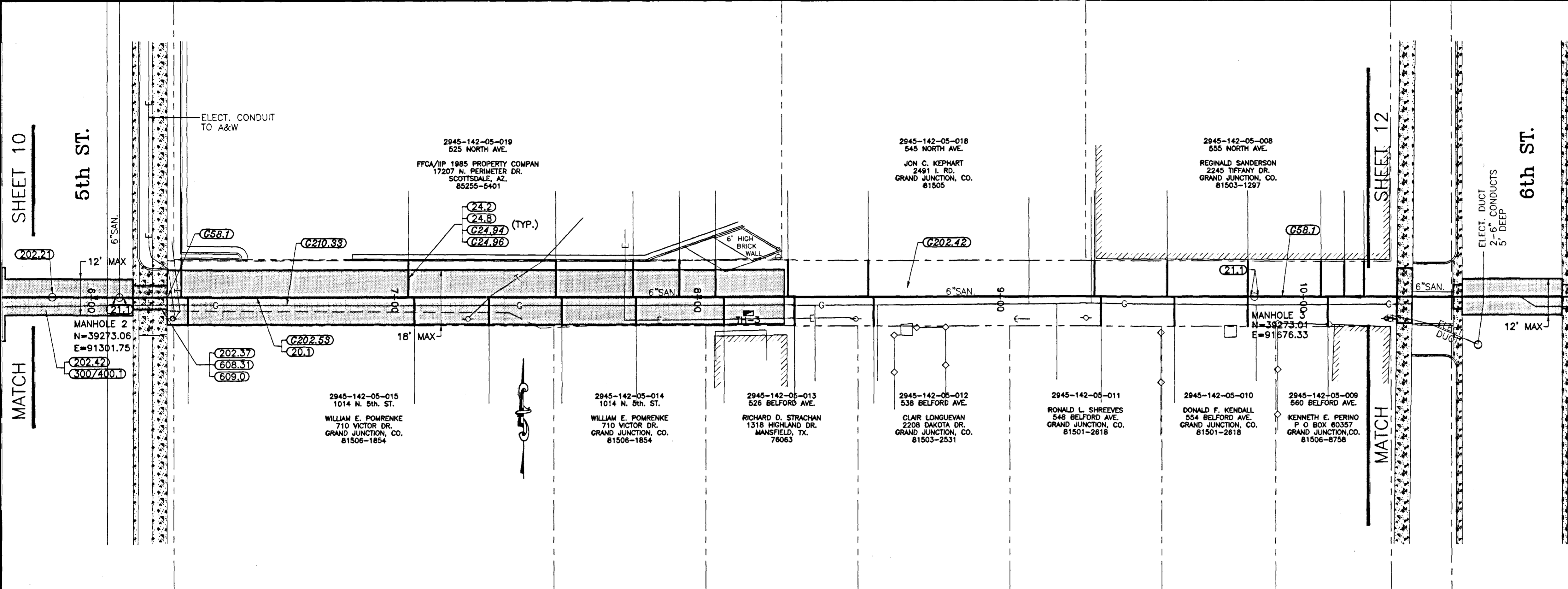
**1998 SEWER LINES REPLACEMENT**  
 North Ave., Belford, 4th to 6th

SHEET 10  
 FILENAME  
 SS010101.DWG

SHADING AND TEXTURE LEGEND			
FACILITY OR SURFACE TREATMENT	EXISTING	PROPOSED	REMOVE & REPLACE
ASPHALT PAVEMENT	[Pattern]	[Pattern]	[Pattern]
CONCRETE (C, G, SW AT STREETS)	[Pattern]	[Pattern]	[Pattern]

**CONSTRUCTION NOTES**

- 20.1 CONSTRUCT 8" SDR 35 PVC SANITARY SEWER.
- 21.1 CONNECT THE PROPOSED SEWERLINE TO THE EXISTING MH, AND GROUT SEAL AROUND PIPE.
- 24.2 REPLACE ALL EXISTING ACTIVE SEWER SERVICE FROM THE NEW SEWER TAP TO THE ALLEY ROW OR AT 3 FEET MAXIMUM LENGTH IN STREET ROW.
- 24.8 INSTALL FULL BODY WYE SEWER TAP AND CONNECT TO ALL ACTIVE EXISTING SEWER SERVICES (INCLUDE WYE, RISER PIPE, AND BEND).
- G24.94 NOT ALL SEWER SERVICES MAY BE SHOWN. THE CONTRACTOR SHALL LOCATE ALL ACTIVE SERVICES AND PROVIDE AS-CONSTRUCTED LOCATIONS FOR ALL TAPS. WORK SHALL BE PAID FOR UNDER THE APPROXIMATE BID ITEM.
- G24.96 USE OF DYE IS EFFECTIVE IN LOCATING ACTIVE SEWER TAPS. IF IN DOUBT AS TO WHETHER A TAP IS ACTIVE OR NOT, REPLACE AND RECONNECT.
- G58.1 CONSTRUCT CUT-OFF WALL PER STANDARD SPECIFICATIONS.
- 202.21 REMOVE MANHOLE.
- 202.37 REMOVE CONCRETE CURB, GUTTER, SIDEWALKS, DRIVEWAYS, PAVEMENT, AND/OR SLABS TO JOINTS OR DIMENSIONS WHERE SHOWN; OTHERWISE, REMOVE AS REQUIRED FOR CONSTRUCTION. SAWCUT AS NECESSARY.
- 202.42 REMOVE ASPHALT PAVEMENT AS REQUIRED FOR CONSTRUCTION.
- G202.42 THIS ALLEY MAY HAVE ASPHALT PAVEMENT, THE REMOVAL OF WHICH IS UNCLASSIFIED, AND SHALL BE PAID FOR UNDER THE APPLICABLE BID SCHEDULE ITEM.
- G202.53 REMOVE SANITARY SEWER.
- G210.33 COORDINATE RELOCATION OF GAS LINE.
- 300/400.1 CONSTRUCT PAVEMENT STRUCTURE PER SPECIAL PROVISIONS.
- 608.31 CONSTRUCT CONCRETE DRIVEWAY.
- 609.0 CONSTRUCT CONCRETE VALLEY PAN GUTTER.

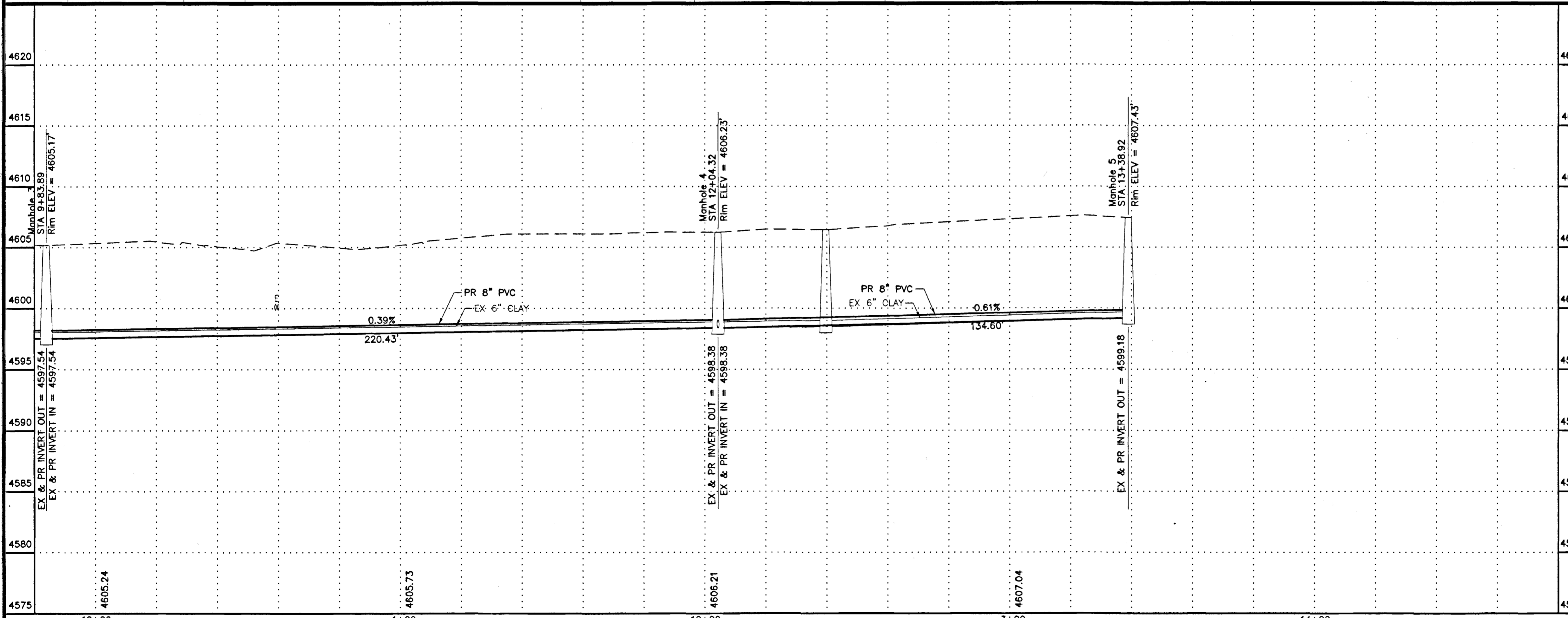
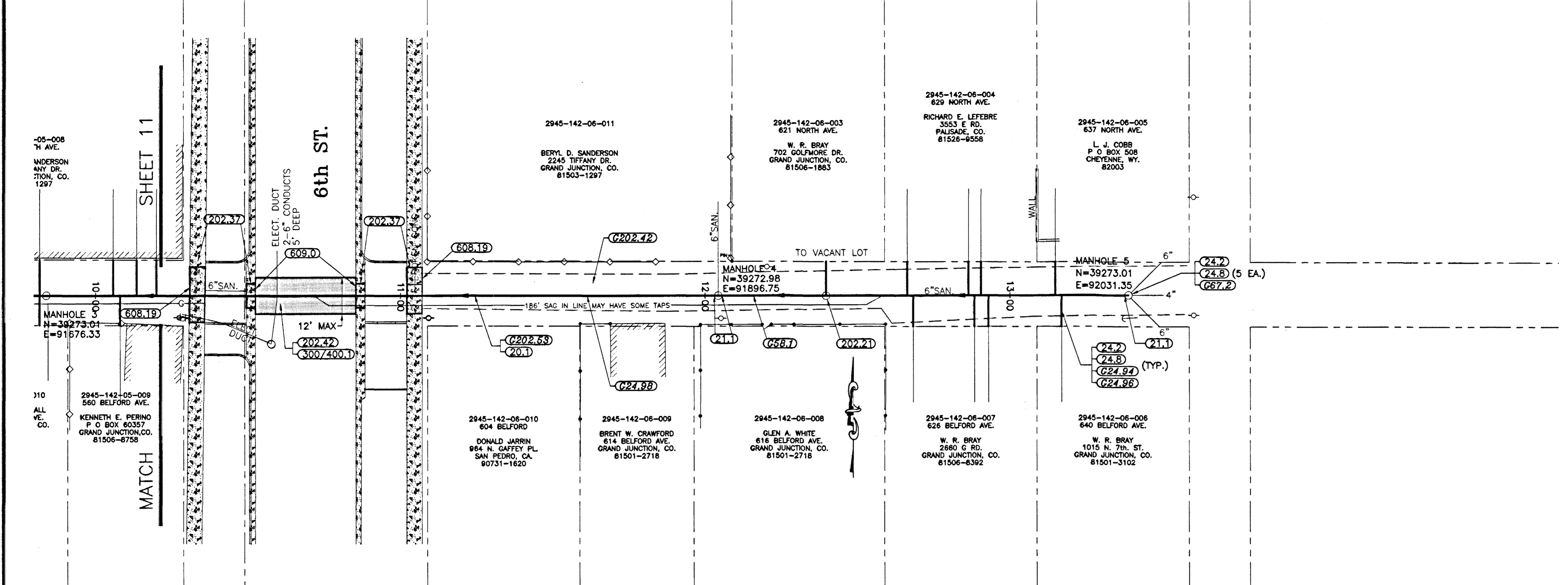


SHADING AND TEXTURE LEGEND

FACILITY OR SURFACE TREATMENT	EXISTING	PROPOSED	REMOVE & REPLACE
ASPHALT PAVEMENT	[Pattern]	[Pattern]	[Pattern]
CONCRETE (C, G, SW AT STREETS)	[Pattern]	[Pattern]	[Pattern]

CONSTRUCTION NOTES

- 20.1 CONSTRUCT 8" SDR 35 PVC SANITARY SEWER.
- 21.1 CONNECT THE PROPOSED SEWERLINE TO THE EXISTING MH, AND GROUT SEAL AROUND PIPE.
- 24.2 REPLACE ALL EXISTING ACTIVE SEWER SERVICE FROM THE NEW SEWER TAP TO THE ALLEY ROW OR AT 3 FEET MAXIMUM LENGTH IN STREET ROW.
- 24.8 INSTALL FULL BODY WYE SEWER TAP AND CONNECT TO ALL ACTIVE EXISTING SEWER SERVICES (INCLUDE WYE, RISER PIPE, AND BEND).
- G24.94 NOT ALL SEWER SERVICES MAY BE SHOWN. THE CONTRACTOR SHALL LOCATE ALL ACTIVE SERVICES AND PROVIDE AS-CONSTRUCTED LOCATIONS FOR ALL TAPS. WORK SHALL BE PAID FOR UNDER THE APPROXIMATE BID ITEM.
- G24.96 USE OF DYE IS EFFECTIVE IN LOCATING ACTIVE SEWER TAPS. IF IN DOUBT AS TO WHETHER A TAP IS ACTIVE OR NOT, REPLACE AND RECONNECT.
- G24.98 SEWER TAP INFORMATION IS NOT AVAILABLE FOR THIS AREA. THE CONTRACTOR SHALL LOCATE ALL ACTIVE SERVICES AND PROVIDE AS-CONSTRUCTED LOCATIONS FOR ALL TAPS. WORK SHALL BE PAID FOR UNDER THE APPROXIMATE BID ITEM.
- G58.1 CONSTRUCT CUT-OFF WALL PER STANDARD SPECIFICATIONS.
- G67.2 PLUG HOLE IN MH WALL BY SEWER SERVICE REMOVAL.
- 202.21 REMOVE MANHOLE.
- 202.37 REMOVE CONCRETE CURB, GUTTER, SIDEWALKS, DRIVEWAYS, PAVEMENT, AND/OR SLABS TO JOINTS OR DIMENSIONS WHERE SHOWN; OTHERWISE, REMOVE AS REQUIRED FOR CONSTRUCTION. SAWCUT AS NECESSARY.
- 202.42 REMOVE ASPHALT PAVEMENT AS REQUIRED FOR CONSTRUCTION.
- G202.42 THIS ALLEY MAY HAVE ASPHALT PAVEMENT, THE REMOVAL OF WHICH IS UNCLASSIFIED, AND SHALL BE PAID FOR UNDER THE APPLICABLE BID SCHEDULE ITEM.
- G202.53 REMOVE SANITARY SEWER.
- 300/400.1 CONSTRUCT PAVEMENT STRUCTURE PER SPECIAL PROVISIONS.
- 608.19 REPLACE REMOVED CONCRETE SIDEWALK TO JOINTS AS APPLICABLE, MATCHING GRADES AT TIE-IN.
- 609.0 CONSTRUCT CONCRETE VALLEY PAN GUTTER.



REVISION	DESCRIPTION	DATE
REVISION		
REVISION		

SCALE	PLAN	PROFILE	SECTIONS
HORIZONTAL	0 10 20 40	0 10 20 40	
VERTICAL		0 2.5 5 10	

**WILLIAMS ENGINEERING**  
 1231 19 ROAD, FRUITA, COLORADO 81521-9689  
 (970) 858-1014 PHONE (970) 858-1007 FAX

**1998 SEWER LINES REPLACEMENT**  
 North Ave., Belford, 4th to 6th

SHEET 12  
 FILENAME: SS010301.DWG