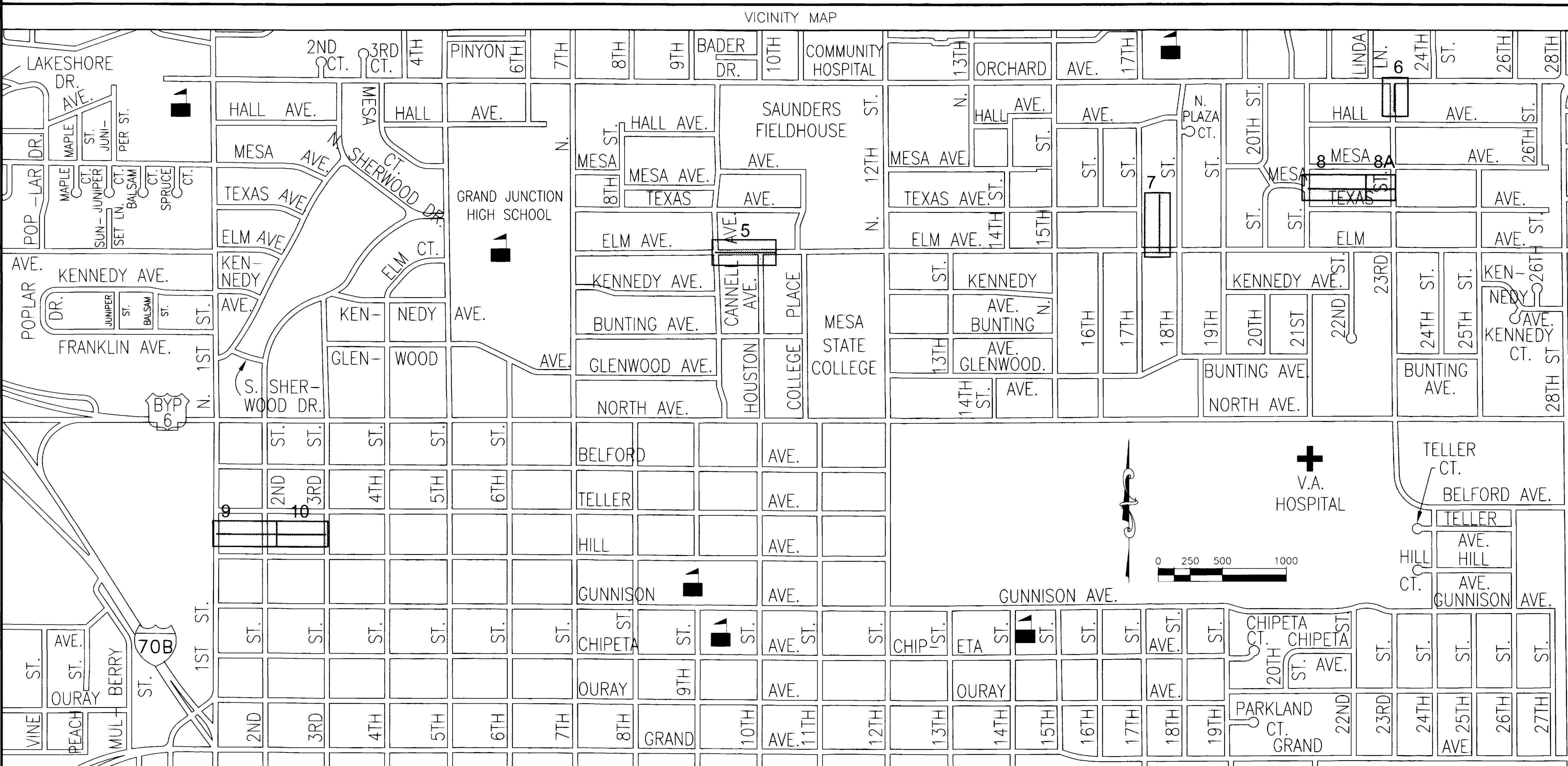


1999 SEWER LINES REPLACEMENT PROJECT

City of Grand Junction, Colorado



SHEET INDEX	
SHEET #	SHEET DESCRIPTION
1	COVER SHEET
2	QUANTITIES SUMMARY
3	DRAFTING STANDARDS & ABBREVIATIONS
4	SPECIAL DETAILS
5	ELM, CANNELL TO COLLEGE PLACE
6	23rd STREET / ORCHARD TO S. OF 1830 ORCHARD
7	17th, 18th, ELM N. TO NEXT MH
8	MESA, TEXAS, 21st TO 23rd
8A	MESA, TEXAS, 21st TO 23rd
9	TELLER, HILL, 1st TO 3rd
10	TELLER, HILL, 1st TO 3rd
EXHIBIT "I"	STANDARD SANITARY SEWER DETAILS

PREPARED BY

WILLIAMS ENGINEERING
1231 19 Road
Fruita, CO 81521-9689
(970) 858-1014 Phone
(970) 858-1007 FAX

UTILITIES AND AGENCIES							
AGENCY	NAME	POSITION	MAILING ADDRESS	STREET ADDRESS	CITY, STATE	VOICE	FAX
GRAND JUNCTION, CITY OF	BRET GUILLORY	PROJECT ENGINEER	250 N. 5th STREET	250 N. 5th STREET	GRAND JUNCTION, CO 81501	256-4023	256-4011
PSCO	JON PRICE	WEST OF 12th ST.		2538 BLICKMAN ROAD	GRAND JUNCTION, CO 81501	244-2693	244-2661
PSCO	JOHN SALAZAR	EAST OF 12th ST.		2538 BLICKMAN ROAD	GRAND JUNCTION, CO 81501	244-2781	244-2661
TCI	GLENN VANCIL		2502 FORESIGHT CIRCLE	2502 FORESIGHT CIRCLE	GRAND JUNCTION, CO 81504	245-8750	245-6803
U.S. WEST	MAX WARD	ENGINEER			GRAND JUNCTION, CO 81504	244-4721	

GENERAL NOTES

(G01) Unless noted otherwise, Standard Details and Specifications and Special Provisions apply.

(G02) Notes numbered between 20 and 99 pertain to Work governed by the City of Grand Junction's standard specifications, as may be modified by Project Contract Documents.

(G03) Notes numbered between 200 and 699 pertain to Work governed by corresponding sections of the CDOT Standard Specifications for Road and Bridge Construction, as may be modified by Owner Standard Specifications and/or Project Contract Documents.

(G04) Notes numbered above 1000 pertain to miscellaneous Work not governed by standard specifications.

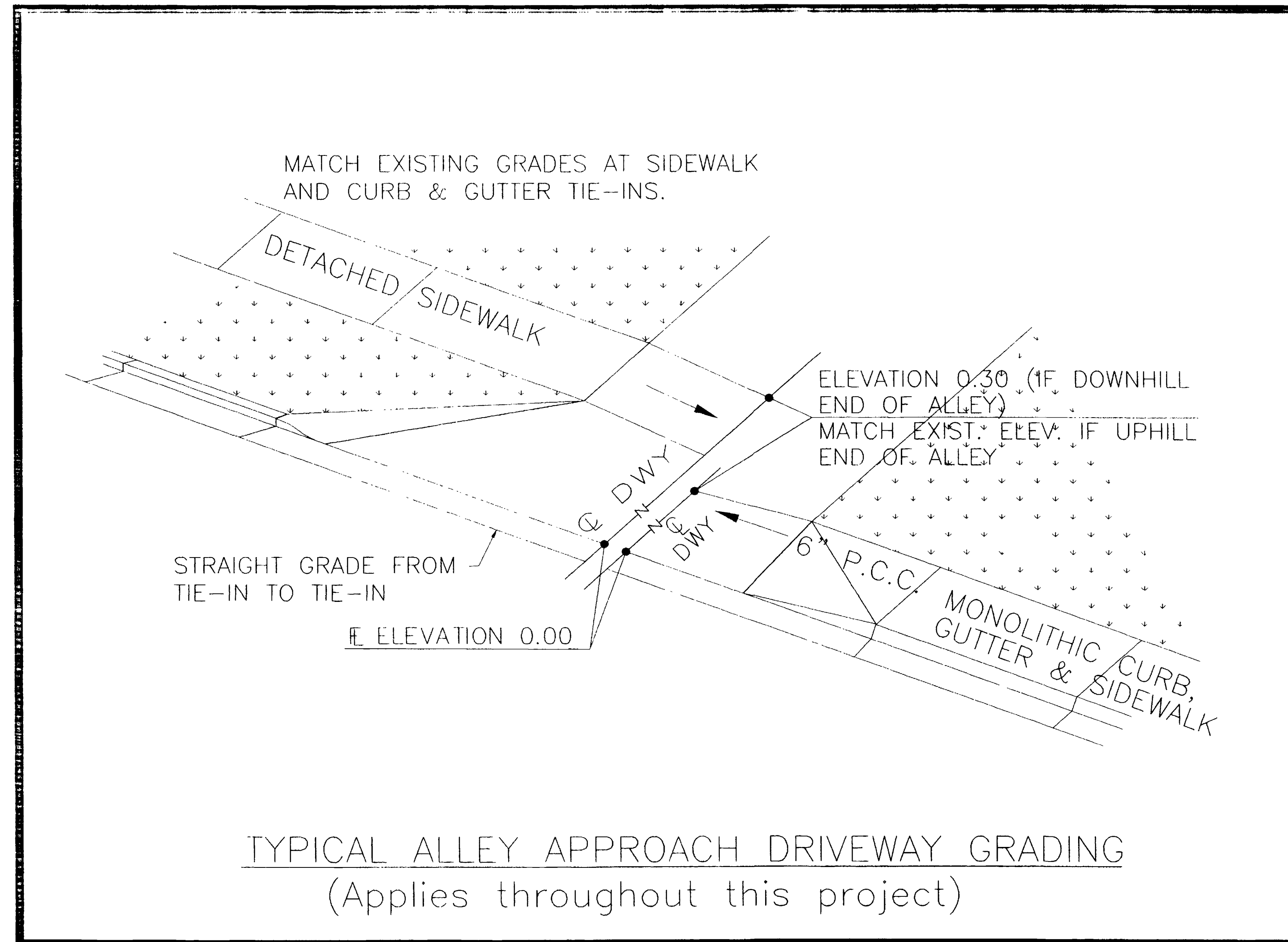
(G05) Note numbers preceded with a "G" are informational or general in nature and, as incidental to the Work, are no-pay items.

(G06) Property lines shown are approximate only.

ITEM NO.	NOTE NO.	DESCRIPTION	UNIT	SHT 5	SHT 6	SHT 7	SHT 8	SHT 8A	SHT 9	SHT 10	MISC	TOTAL QTY
1	20.1	CONSTRUCT 8" SDR 35 PVC SANITARY SEWER.										
1A		IN ALLEYS, INCLUDES 100% IMPORTED BACKFILL (NO ADD'L PAY FOR ITEM 82	LF			424	435	303	362	419		1943
1B		UNDER STREET PVMT, INCLUDES NATIVE MAT'L BACKFILL. (IF IMPORTED BACK	LF	470	207	27	25	5	58	18		810
2	21.1	CONNECT THE PROPOSED SEWERLINE TO THE EXISTING MH, AND GROUT SEAL AR	EA	1	2	2	1	1	3	1		11
3	24.2	REPLACE ALL EXISTING ACTIVE SEWER SERVICES FROM THE NEW SEWER TAP TO										
		THE ALLEY ROW OR AT 3 FEET MAXIMUM LENGTH IN STREET ROW.										
3A		IN ALLEYS, INCLUDES 100% IMPORTED BACKFILL (NO ADD'L PAY FOR ITEM 82	LF			140	180	41	150	419		930
3B		UNDER STREET PVMT, INCLUDES NATIVE MAT'L BACKFILL. (IF IMPORTED BACK	LF	48	27							75
4	24.8	INSTALL FULL BODY WYE SEWER TAP AND CONNECT TO ALL ACTIVE EXISTING S	EA	16	9	14	17	4	15	16		91
5	64.1	CONSTRUCT STANDARD 4' DIA. MH. (Includes pipe connections, grouting,	EA		1		1					2
6	81.1	OVEREXCAVATE TRENCH BELOW REQUIRED BEDDING AS DIRECTED BY ENGINEER,	CY								100	100
7	82.1	FURNISH AND INSTALL PIT RUN TRENCH BACKFILL MATERIAL IN STREETS AS D	TON								900	900
8	202.21	REMOVE MANHOLE.	EA		1		2					3
9	202.37	REMOVE CONCRETE CURB, GUTTER, SIDEWALKS, DRIVEWAYS, PAVEMENT, AND/OR	SY		128	13	12	6	40	15		214
10	202.42	REMOVE ASPHALT PAVEMENT AS REQUIRED FOR CONSTRUCTION.	SY	622	209	43	42	15	88	32		1051
11	212/213.3	RESTORE LANDSCAPING, INCLUDING SOD WHERE REMOVED, IRRIGATION SYSTEMS	LS		1							1
12	300/400.1	CONSTRUCT PAVEMENT STRUCTURE PER SPECIAL PROVISIONS.										
12a		PVMT REPLACEMENT IN ALLEYS	SY									0
12b		PVMT REPLACEMENT IN STREETS	SY	622	209	43	42	15	88	32		1051
13	608.19	REPLACE REMOVED CONCRETE SIDEWALK TO JOINTS AS APPLICABLE, MATCHING	SY						22	9		31
14	608.31	CONSTRUCT CONCRETE DRIVEWAY.	SY		43	13	12	6	105	52.5		231.5
15	608.32	CONSTRUCT CONCRETE DISABLED PEDESTRIAN RAMP.	SY		14							14
16	608/609.2	RECONSTRUCT MONOLITHIC VERTICAL CURB, GUTTER, AND SIDEWALK AS REQUIR	SY		114							114
17	609.0	CONSTRUCT VERTICAL CURB AND GUTTER.	LF						287			287
18	625.3	PROVIDE CONSTRUCTION SURVEYING AND RED-LINED PLANS PER AS-CONSTRUCTE	LS								1	1
19	626.1	PROVIDE ALL MOBILIZATION, BONDS, INSURANCES, AND OTHER INCIDENTALS A	LS								1	1
20	630	TRAFFIC CONTROL									1	1
20A		ALLEY CLOSURE	DAY			6	5	4	8	7		30
20B		ROAD CLOSURE	DAY	6	4	1	1		4	1		17
20C		LANE CLOSURE	DAY		1			1	1			3
20D		TRAFFIC CONTROL SUPERVISOR	DAY	6	4	7	6	5	13	8		49
20E		FLAGGING	HOUR		16			16	16			48
21	1997.1	PROVIDE NEWSLETTERS PER SPECIAL CONDITIONS.	LS								1	1
22	1999	FORCE ACCOUNT	LS								1	1
		TOTAL BID AMOUNT:										

COMMENTS

REVISION	DESCRIPTION	DATE	SCALE	PLAN	PROFILE	SECTIONS	WILLIAMS ENGINEERING 1231 19 ROAD, FRUITA, COLORADO 81521-9689 (970) 858-1014 PHONE (970) 858-1007 FAX	1999 SEWER LINES REPLACEMENT APPROXIMATE QUANTITIES	SHEET 2
REVISION			HORIZONTAL	0 10 20 40	0 10 20 40	FILENAME			
REVISION			VERTICAL	0 2.5 5 10		QUANTY			



DESCRIPTION	DATE
REVISION Δ _____	-
REVISION Δ _____	-
REVISION Δ _____	-

SCALE	PLAN	PROFILE	SECTIONS
HORIZONTAL			
VERTICAL			

WILLIAMS ENGINEERING
 1231 19 ROAD, FRUITA, COLORADO 81521-9689
 (970) 858-1014 PHONE (970) 858-1007 FAX

1999 SEWER LINES REPLACEMENT
 Special Details

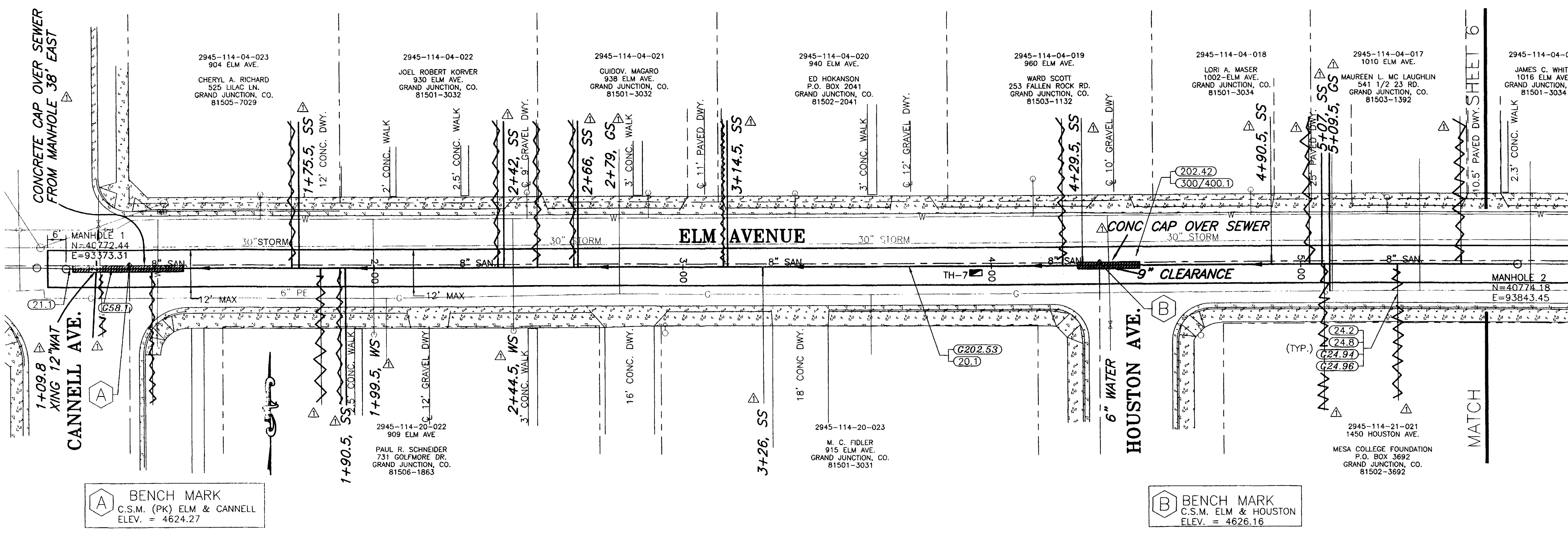
SHEET 4
 FILENAME
 98SS-04.DWG

SHADING AND TEXTURE LEGEND

FACILITY OR SURFACE TREATMENT	EXISTING	PROPOSED	REMOVE & REPLACE
ASPHALT PAVEMENT			
CONCRETE (C, G, SW AT STREETS)			

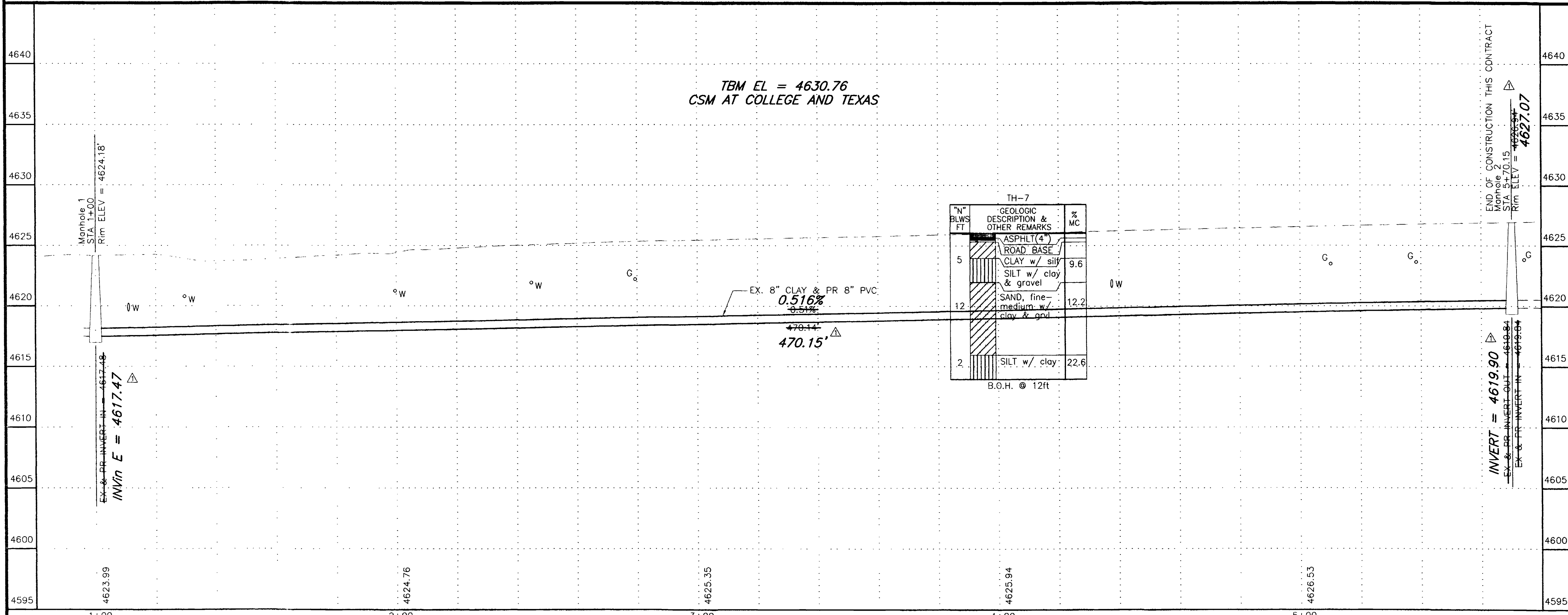
CONSTRUCTION NOTES

- 20.1 CONSTRUCT 8" SDR 35 PVC SANITARY SEWER.
- 21.1 CONNECT THE PROPOSED SEWERLINE TO THE EXISTING MH, AND GROUT SEAL AROUND PIPE.
- 24.2 REPLACE ALL EXISTING ACTIVE SEWER SERVICE FROM THE NEW SEWER TAP TO THE ALLEY ROW OR AT 3 FEET MAXIMUM LENGTH IN STREET ROW.
- 24.8 INSTALL FULL BODY WYE SEWER TAP AND CONNECT TO ALL ACTIVE EXISTING SEWER SERVICES (INCLUDE WYE, RISER PIPE, AND BEND).
- G24.94 NOT ALL SEWER SERVICES MAY BE SHOWN. THE CONTRACTOR SHALL LOCATE ALL ACTIVE SERVICES AND PROVIDE AS-CONSTRUCTED LOCATIONS FOR ALL TAPS. WORK SHALL BE PAID FOR UNDER THE APPROXIMATE BID ITEM.
- G24.96 USE OF DYE IS EFFECTIVE IN LOCATING ACTIVE SEWER TAPS. IF IN DOUBT AS TO WHETHER A TAP IS ACTIVE OR NOT, REPLACE AND RECONNECT.
- G58.1 CONSTRUCT CUT-OFF WALL PER STANDARD SPECIFICATIONS.
- 202.42 REMOVE ASPHALT PAVEMENT AS REQUIRED FOR CONSTRUCTION.
- G202.53 REMOVE SANITARY SEWER.
- 300/400.1 CONSTRUCT PAVEMENT STRUCTURE PER SPECIAL PROVISIONS.



A BENCH MARK
C.S.M. (PK) ELM & CANNELL
ELEV. = 4624.27

B BENCH MARK
C.S.M. ELM & HOUSTON
ELEV. = 4626.16



REVISION	DESCRIPTION	DATE
ASBUILT		9-25-02

SCALE	PLAN	PROFILE	SECTIONS
HORIZONTAL	0 10 20 40	0 10 20 40	
VERTICAL		0 2.5 5 10	

WILLIAMS ENGINEERING
1231 19 ROAD, FRUITA, COLORADO 81521-9689
(970) 858 - 1014 PHONE (970) 858 - 1007 FAX

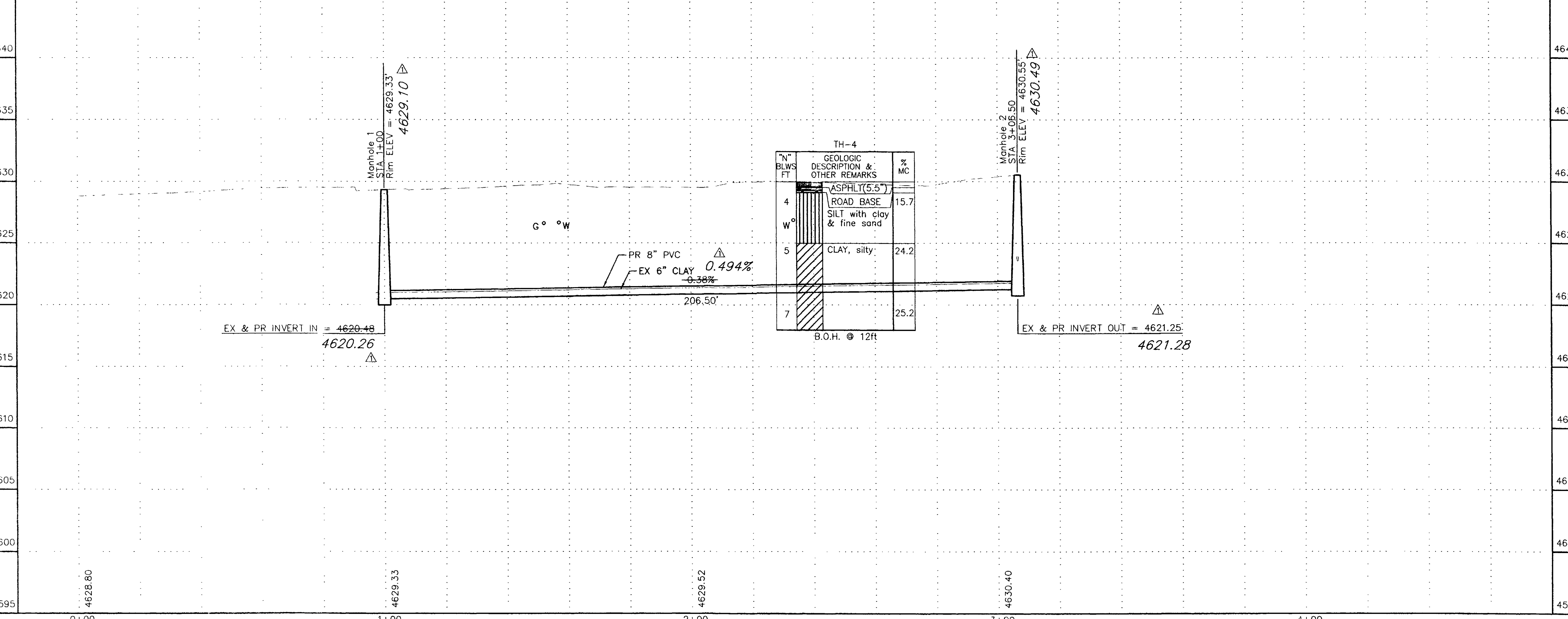
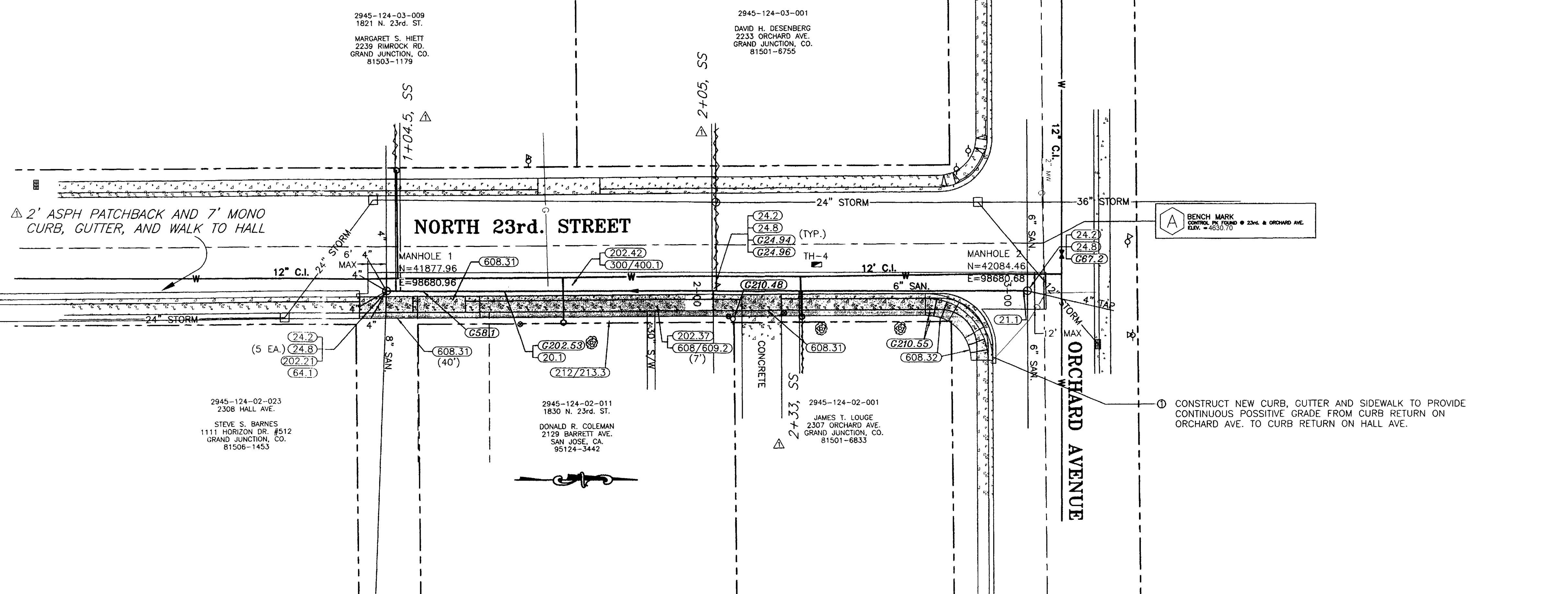
1999 SEWER LINES REPLACEMENT
Elm, Cannell to College Place
SHEET 5
FILENAME: SS010101.DWG
92103105.tif

SHADING AND TEXTURE LEGEND

FACILITY OR SURFACE TREATMENT	EXISTING	PROPOSED	REMOVE & REPLACE
ASPHALT PAVEMENT	[Pattern]	[Pattern]	[Pattern]
CONCRETE (C, G, SW AT STREETS)	[Pattern]	[Pattern]	[Pattern]

CONSTRUCTION NOTES

- 20.1 CONSTRUCT 8" SDR 35 PVC SANITARY SEWER.
- 21.1 CONNECT THE PROPOSED SEWERLINE TO THE EXISTING MH, AND GROUT SEAL AROUND PIPE.
- 24.2 REPLACE ALL EXISTING ACTIVE SEWER SERVICE FROM THE NEW SEWER TAP TO THE ALLEY ROW OR AT 3 FEET MAXIMUM LENGTH IN STREET ROW.
- 24.8 INSTALL FULL BODY WYE SEWER TAP AND CONNECT TO ALL ACTIVE EXISTING SEWER SERVICES (INCLUDE WYE, RISER PIPE, AND BEND).
- G24.94 NOT ALL SEWER SERVICES MAY BE SHOWN. THE CONTRACTOR SHALL LOCATE ALL ACTIVE SERVICES AND PROVIDE AS-CONSTRUCTED LOCATIONS FOR ALL TAPS. WORK SHALL BE PAID FOR UNDER THE APPROXIMATE BID ITEM.
- G24.96 USE OF DYE IS EFFECTIVE IN LOCATING ACTIVE SEWER TAPS. IF IN DOUBT AS TO WHETHER A TAP IS ACTIVE OR NOT, REPLACE AND RECONNECT.
- G58.1 CONSTRUCT CUT-OFF WALL PER STANDARD SPECIFICATIONS.
- 64.1 CONSTRUCT STANDARD 4' DIA. MH.
- 202.21 REMOVE MANHOLE.
- 202.37 REMOVE CONCRETE CURB, GUTTER, SIDEWALKS, DRIVEWAYS, PAVEMENT, AND/OR SLABS TO JOINTS OR DIMENSIONS WHERE SHOWN; OTHERWISE, REMOVE AS REQUIRED FOR CONSTRUCTION. SAWCUT AS NECESSARY.
- 202.42 REMOVE ASPHALT PAVEMENT AS REQUIRED FOR CONSTRUCTION.
- G202.53 REMOVE SANITARY SEWER.
- G210.48 COORDINATE RELOCATION OF UTILITY POLE AND CABLE AS REQUIRED.
- G210.55 RELOCATE TRAFFIC SIGN.
- 212/213.3 RESTORE LANDSCAPING, INCLUDING SOD WHERE REMOVED, IRRIGATION SYSTEMS, AND OTHER FEATURES.
- 300/400.1 CONSTRUCT PAVEMENT STRUCTURE PER SPECIAL PROVISIONS.
- 608.31 CONSTRUCT CONCRETE DRIVEWAY.
- 608.32 CONSTRUCT CONCRETE DISABLED PEDESTRIAN RAMP.
- 608/609.2 RECONSTRUCT MONOLITHIC VERTICAL CURB, GUTTER, AND SIDEWALK AS REQUIRED. MATCH EXISTING.



REVISION	DATE
REVISION A ASBUILT	9-25-02
REVISION B	
REVISION C	

SCALE	PLAN	PROFILE	SECTIONS
HORIZONTAL	0 10 20 40	0 10 20 40	
VERTICAL		0 2.5 5 10	

WILLIAMS ENGINEERING
 1231 19 ROAD, FRUITA, COLORADO 81521-9689
 (970) 858-1014 PHONE (970) 858-1007 FAX

1999 SEWER LINES REPLACEMENT
 23rd/Orchard to S. of 1830 Orchard

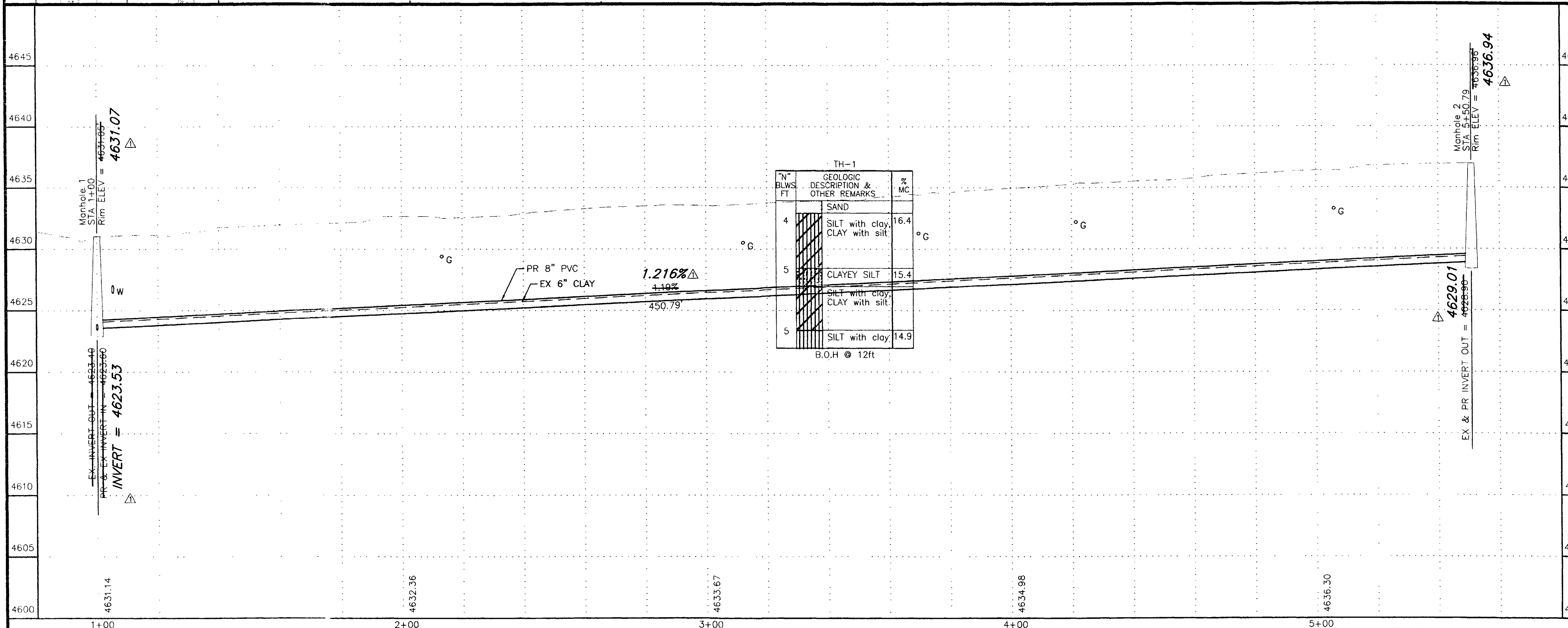
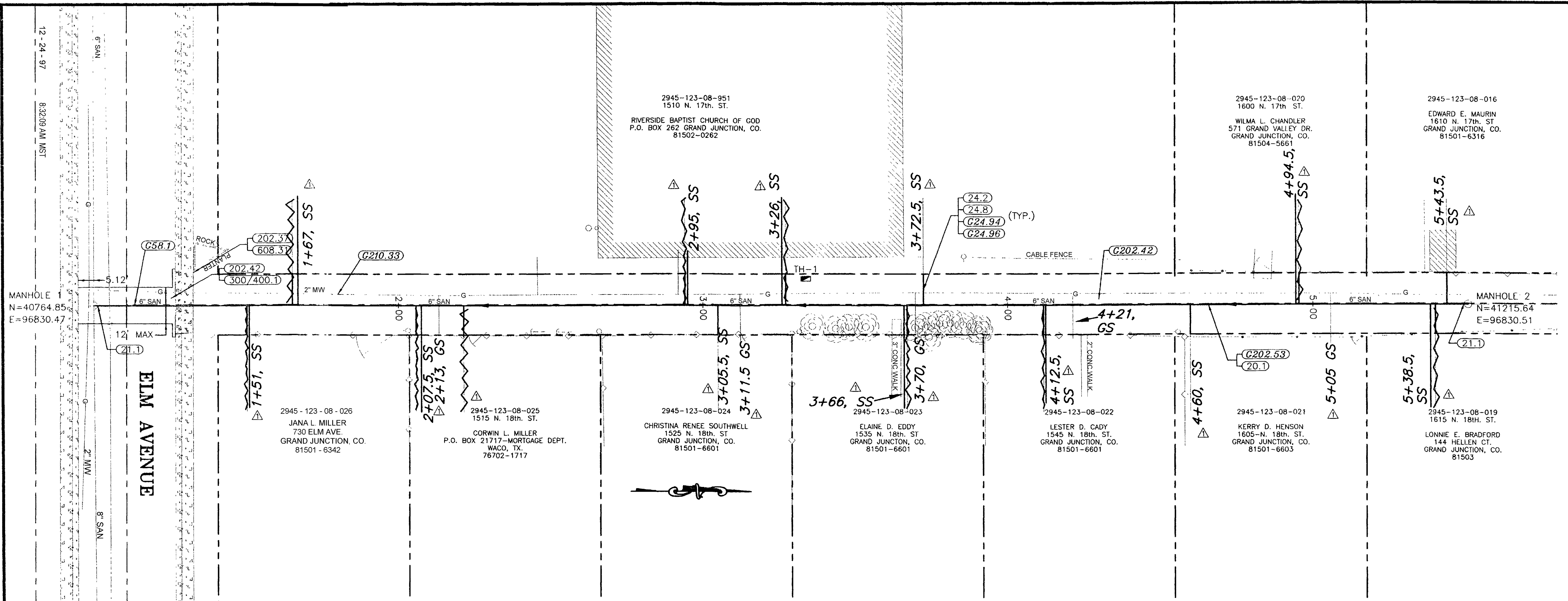
SHEET 6
 FILENAME
 SS010101.DWG

SHADING AND TEXTURE LEGEND

FACILITY OR SURFACE TREATMENT	EXISTING	PROPOSED	REMOVE & REPLACE
ASPHALT PAVEMENT	[Pattern]	[Pattern]	[Pattern]
CONCRETE (C, G, SW AT STREETS)	[Pattern]	[Pattern]	[Pattern]

CONSTRUCTION NOTES

- 20.1 CONSTRUCT 8" SDR 35 PVC SANITARY SEWER.
- 21.1 CONNECT THE PROPOSED SEWERLINE TO THE EXISTING MH, AND GROUT SEAL AROUND PIPE.
- 24.2 REPLACE ALL EXISTING ACTIVE SEWER SERVICE FROM THE NEW SEWER TAP TO THE ALLEY ROW OR AT 3 FEET MAXIMUM LENGTH IN STREET ROW.
- 24.8 INSTALL FULL BODY WYE SEWER TAP AND CONNECT TO ALL ACTIVE EXISTING SEWER SERVICES (INCLUDE WYE, RISER PIPE, AND BEND).
- G24.94 NOT ALL SEWER SERVICES MAY BE SHOWN. THE CONTRACTOR SHALL LOCATE ALL ACTIVE SERVICES AND PROVIDE AS-CONSTRUCTED LOCATIONS FOR ALL TAPS. WORK SHALL BE PAID FOR UNDER THE APPROXIMATE BID ITEM.
- G24.96 USE OF DYE IS EFFECTIVE IN LOCATING ACTIVE SEWER TAPS. IF IN DOUBT AS TO WHETHER A TAP IS ACTIVE OR NOT, REPLACE AND RECONNECT.
- G58.1 CONSTRUCT CUT-OFF WALL PER STANDARD SPECIFICATIONS.
- 202.37 REMOVE CONCRETE CURB, GUTTER, SIDEWALKS, DRIVEWAYS, PAVEMENT, AND/OR SLABS TO JOINTS OR DIMENSIONS WHERE SHOWN; OTHERWISE, REMOVE AS REQUIRED FOR CONSTRUCTION. SAWCUT AS NECESSARY.
- 202.42 REMOVE ASPHALT PAVEMENT AS REQUIRED FOR CONSTRUCTION.
- G202.42 THIS ALLEY MAY HAVE ASPHALT PAVEMENT, THE REMOVAL OF WHICH IS UNCLASSIFIED, AND SHALL BE PAID FOR UNDER THE APPLICABLE BID SCHEDULE ITEM.
- G202.53 REMOVE SANITARY SEWER.
- G210.33 COORDINATE RELOCATION OF GAS LINE.
- 300/400.1 CONSTRUCT PAVEMENT STRUCTURE PER SPECIAL PROVISIONS.
- 608.31 CONSTRUCT CONCRETE DRIVEWAY.



REVISION	DATE
ASBUILT	9-25-02

SCALE	PROFILE	SECTIONS
HORIZONTAL: 0 10 20 40	0 10 20 40	0 2.5 5 10
VERTICAL		

WILLIAMS ENGINEERING
 1231 19 ROAD, FRUITA, COLORADO 81521-9689
 (970) 858-1014 PHONE (970) 858-1007 FAX

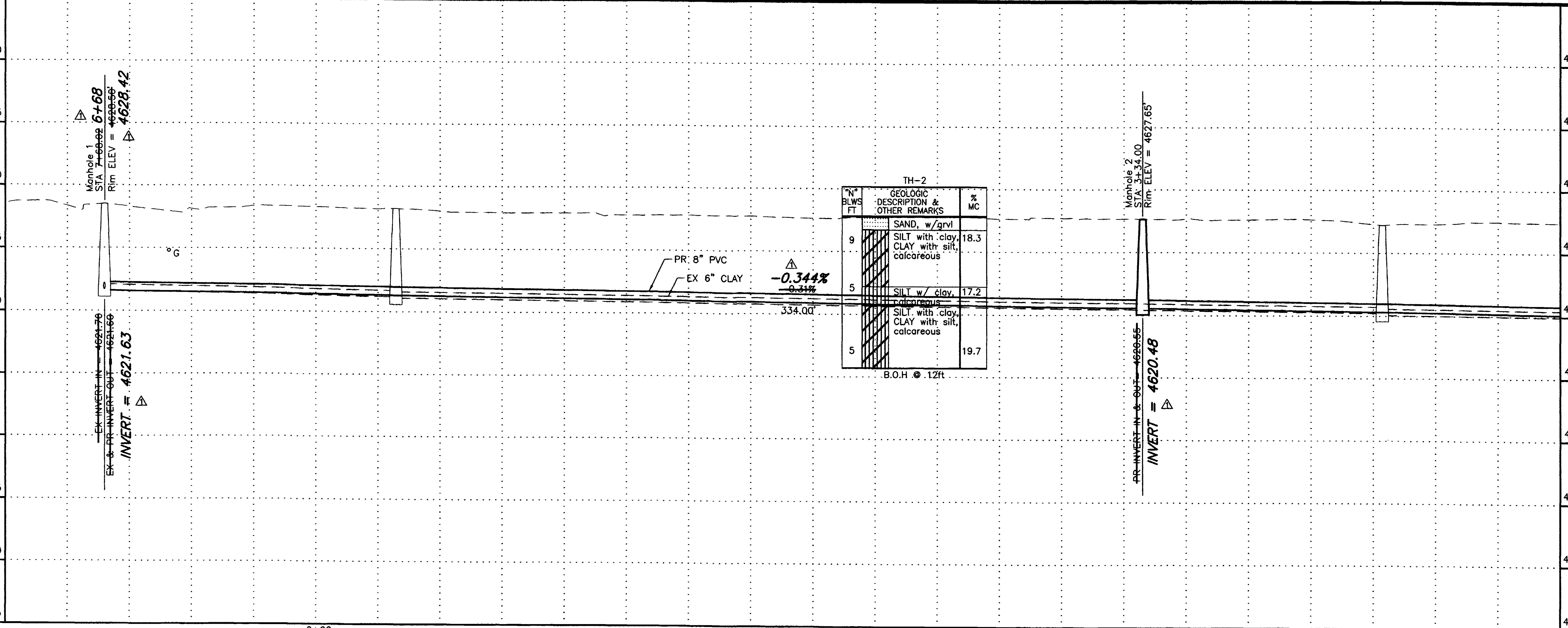
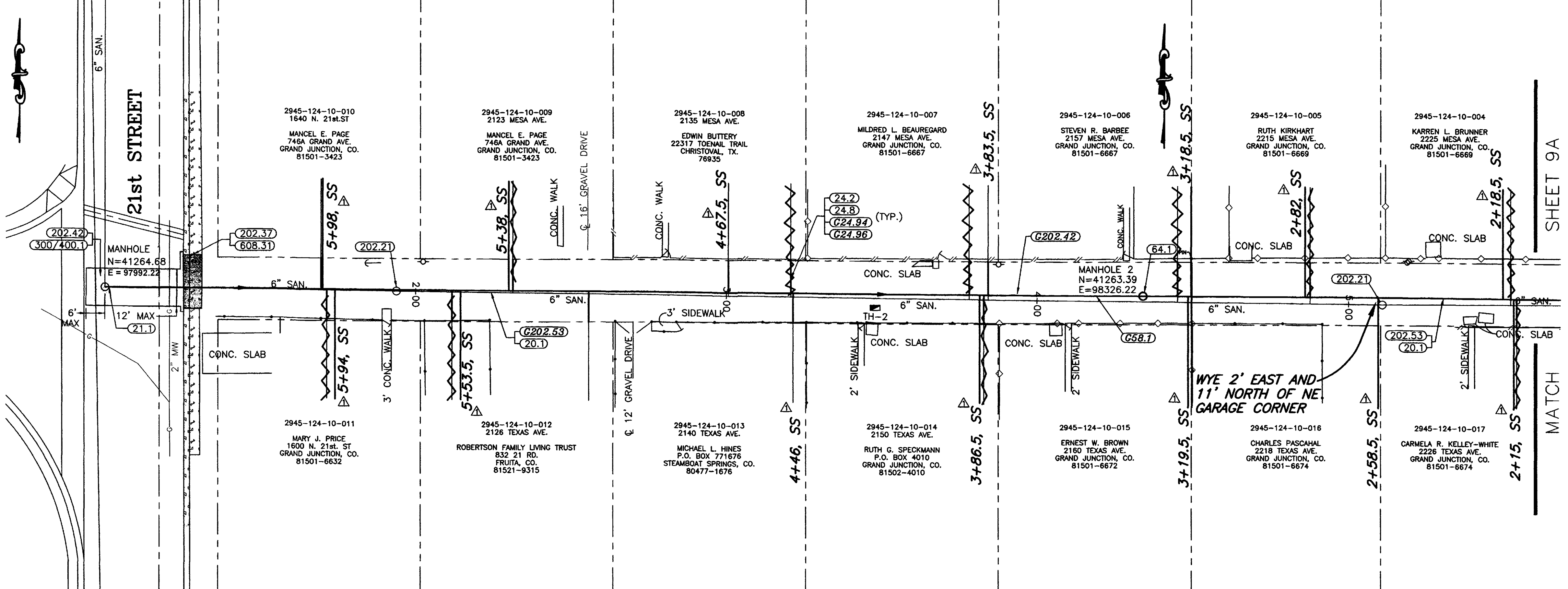
1999 SEWER LINES REPLACEMENT
 17th, 18th, Elm N. to next MH

SHADING AND TEXTURE LEGEND

FACILITY OR SURFACE TREATMENT	EXISTING	PROPOSED	REMOVE & REPLACE
ASPHALT PAVEMENT			
CONCRETE (C, G, SW AT STREETS)			

CONSTRUCTION NOTES

- 20.1 CONSTRUCT 8" SDR 35 PVC SANITARY SEWER.
- 21.1 CONNECT THE PROPOSED SEWERLINE TO THE EXISTING MH, AND GROUT SEAL AROUND PIPE.
- 24.2 REPLACE ALL EXISTING ACTIVE SEWER SERVICE FROM THE NEW SEWER TAP TO THE ALLEY ROW OR AT 3 FEET MAXIMUM LENGTH IN STREET ROW.
- 24.8 INSTALL FULL BODY WYE SEWER TAP AND CONNECT TO ALL ACTIVE EXISTING SEWER SERVICES (INCLUDE WYE, RISER PIPE, AND BEND).
- G24.94 NOT ALL SEWER SERVICES MAY BE SHOWN. THE CONTRACTOR SHALL LOCATE ALL ACTIVE SERVICES AND PROVIDE AS-CONSTRUCTED LOCATIONS FOR ALL TAPS. WORK SHALL BE PAID FOR UNDER THE APPROXIMATE BID ITEM.
- G24.96 USE OF DYE IS EFFECTIVE IN LOCATING ACTIVE SEWER TAPS. IF IN DOUBT AS TO WHETHER A TAP IS ACTIVE OR NOT, REPLACE AND RECONNECT.
- G58.1 CONSTRUCT CUT-OFF WALL PER STANDARD SPECIFICATIONS.
- 62.1 RESHAPE THE MH INVERT WITH EPOXY GROUT. GROUT THICKNESS SHALL BE AT LEAST 1". REMOVE EXISTING CONCRETE AS REQUIRED.
- 64.1 CONSTRUCT STANDARD 4' DIA. MH.
- 202.21 REMOVE MANHOLE.
- 202.37 REMOVE CONCRETE CURB, GUTTER, SIDEWALKS, DRIVEWAYS, PAVEMENT, AND/OR SLABS TO JOINTS OR DIMENSIONS WHERE SHOWN; OTHERWISE, REMOVE AS REQUIRED FOR CONSTRUCTION. SAWCUT AS NECESSARY.
- 202.42 REMOVE ASPHALT PAVEMENT AS REQUIRED FOR CONSTRUCTION.
- G202.42 THIS ALLEY MAY HAVE ASPHALT PAVEMENT, THE REMOVAL OF WHICH IS UNCLASSIFIED, AND SHALL BE PAID FOR UNDER THE APPLICABLE BID SCHEDULE ITEM.
- G202.53 REMOVE SANITARY SEWER.
- 300/400.1 CONSTRUCT PAVEMENT STRUCTURE PER SPECIAL PROVISIONS.
- 608.31 CONSTRUCT CONCRETE DRIVEWAY.



REVISION	DESCRIPTION	DATE
ASBUILT		9-25-02

SCALE	PLAN	PROFILE	SECTIONS
HORIZONTAL	0 10 20 40	0 10 20 40	
VERTICAL		0 2.5 5 10	

WILLIAMS ENGINEERING
 1231 19 ROAD, FRUITA, COLORADO 81521-9689
 (970) 858-1014 PHONE (970) 858-1007 FAX

1999 SEWER LINES REPLACEMENT
 Mesa, Texas, 21st to 23rd

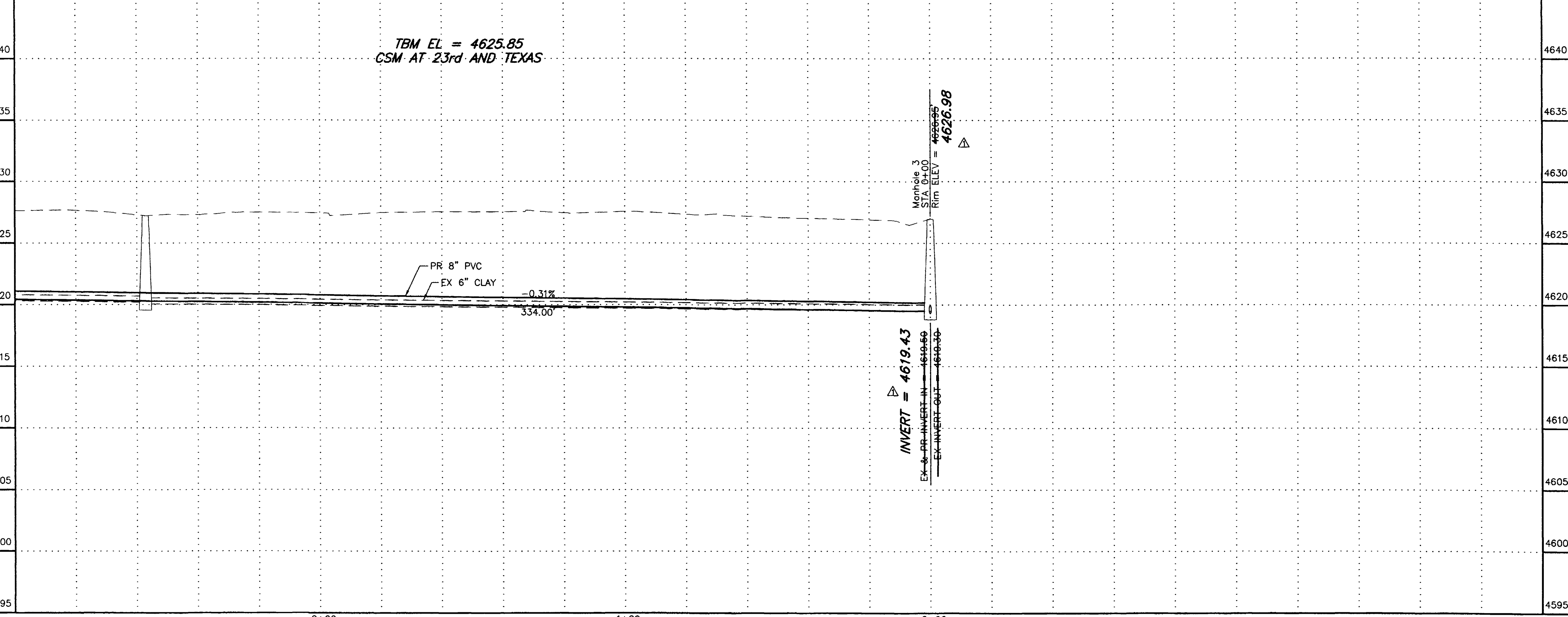
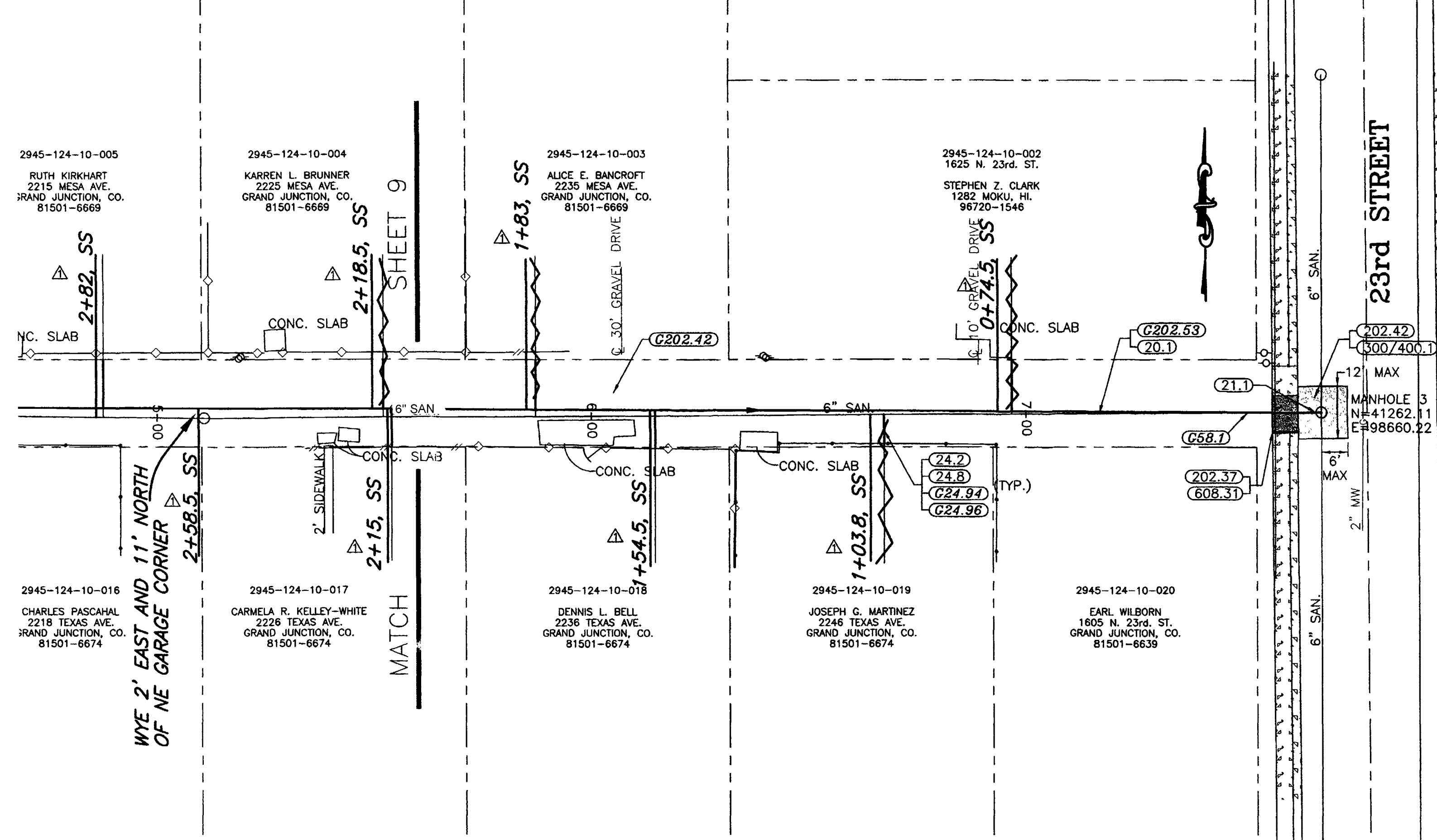
SHEET 8
 FILENAME
 SS010101.DWG

SHADING AND TEXTURE LEGEND

FACILITY OR SURFACE TREATMENT	EXISTING	PROPOSED	REMOVE & REPLACE
ASPHALT PAVEMENT	[Pattern]	[Pattern]	[Pattern]
CONCRETE (C, G, SW AT STREETS)	[Pattern]	[Pattern]	[Pattern]

CONSTRUCTION NOTES

- 20.1 CONSTRUCT 8" SDR 35 PVC SANITARY SEWER.
- 21.1 CONNECT THE PROPOSED SEWERLINE TO THE EXISTING MH, AND GROUT SEAL AROUND PIPE.
- 24.2 REPLACE ALL EXISTING ACTIVE SEWER SERVICE FROM THE NEW SEWER TAP TO THE ALLEY ROW OR AT 3 FEET MAXIMUM LENGTH IN STREET ROW.
- 24.8 INSTALL FULL BODY WYE SEWER TAP AND CONNECT TO ALL ACTIVE EXISTING SEWER SERVICES (INCLUDE WYE, RISER PIPE, AND BEND).
- G24.94 NOT ALL SEWER SERVICES MAY BE SHOWN. THE CONTRACTOR SHALL LOCATE ALL ACTIVE SERVICES AND PROVIDE AS-CONSTRUCTED LOCATIONS FOR ALL TAPS. WORK SHALL BE PAID FOR UNDER THE APPROXIMATE BID ITEM.
- G24.96 USE OF DYE IS EFFECTIVE IN LOCATING ACTIVE SEWER TAPS. IF IN DOUBT AS TO WHETHER A TAP IS ACTIVE OR NOT, REPLACE AND RECONNECT.
- G58.1 CONSTRUCT CUT-OFF WALL PER STANDARD SPECIFICATIONS.
- 202.37 REMOVE CONCRETE CURB, GUTTER, SIDEWALKS, DRIVEWAYS, PAVEMENT, AND/OR SLABS TO JOINTS OR DIMENSIONS WHERE SHOWN; OTHERWISE, REMOVE AS REQUIRED FOR CONSTRUCTION. SAWCUT AS NECESSARY.
- 202.42 REMOVE ASPHALT PAVEMENT AS REQUIRED FOR CONSTRUCTION.
- G202.42 THIS ALLEY MAY HAVE ASPHALT PAVEMENT, THE REMOVAL OF WHICH IS UNCLASSIFIED, AND SHALL BE PAID FOR UNDER THE APPLICABLE BID SCHEDULE ITEM.
- G202.53 REMOVE SANITARY SEWER.
- 300/400.1 CONSTRUCT PAVEMENT STRUCTURE PER SPECIAL PROVISIONS.
- 608.31 CONSTRUCT CONCRETE DRIVEWAY.



REVISION	DATE	SCALE	PLAN	PROFILE	SECTIONS
REVISION Δ ASBUILT	9-25-02	HORIZONTAL	0 10 20 40	0 10 20 40	
REVISION Δ		VERTICAL		0 2.5 5 10	

WILLIAMS ENGINEERING
 1231 19 ROAD, FRUITA, COLORADO 81521-9689
 (970) 858-1014 PHONE (970) 858-1007 FAX

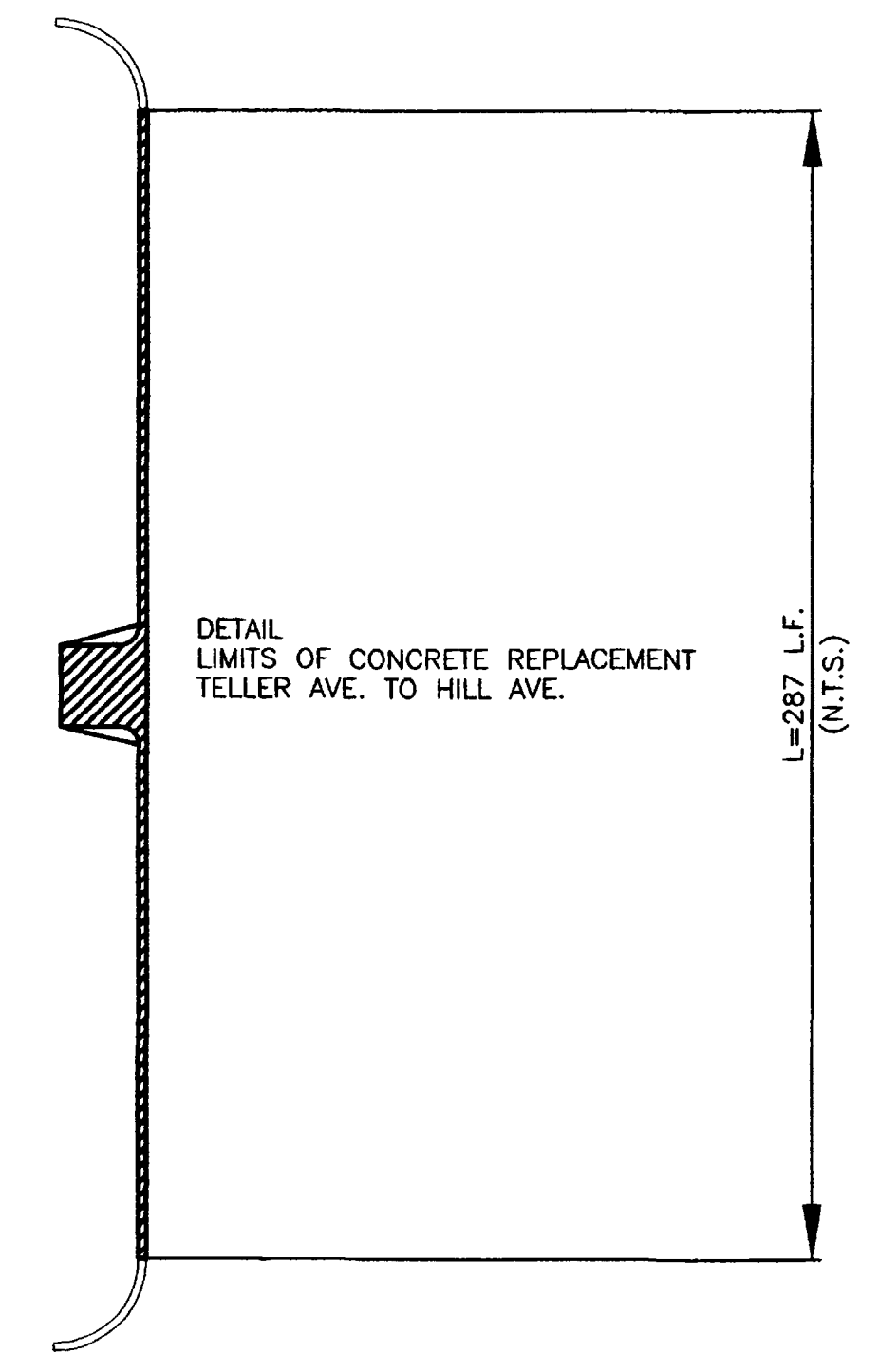
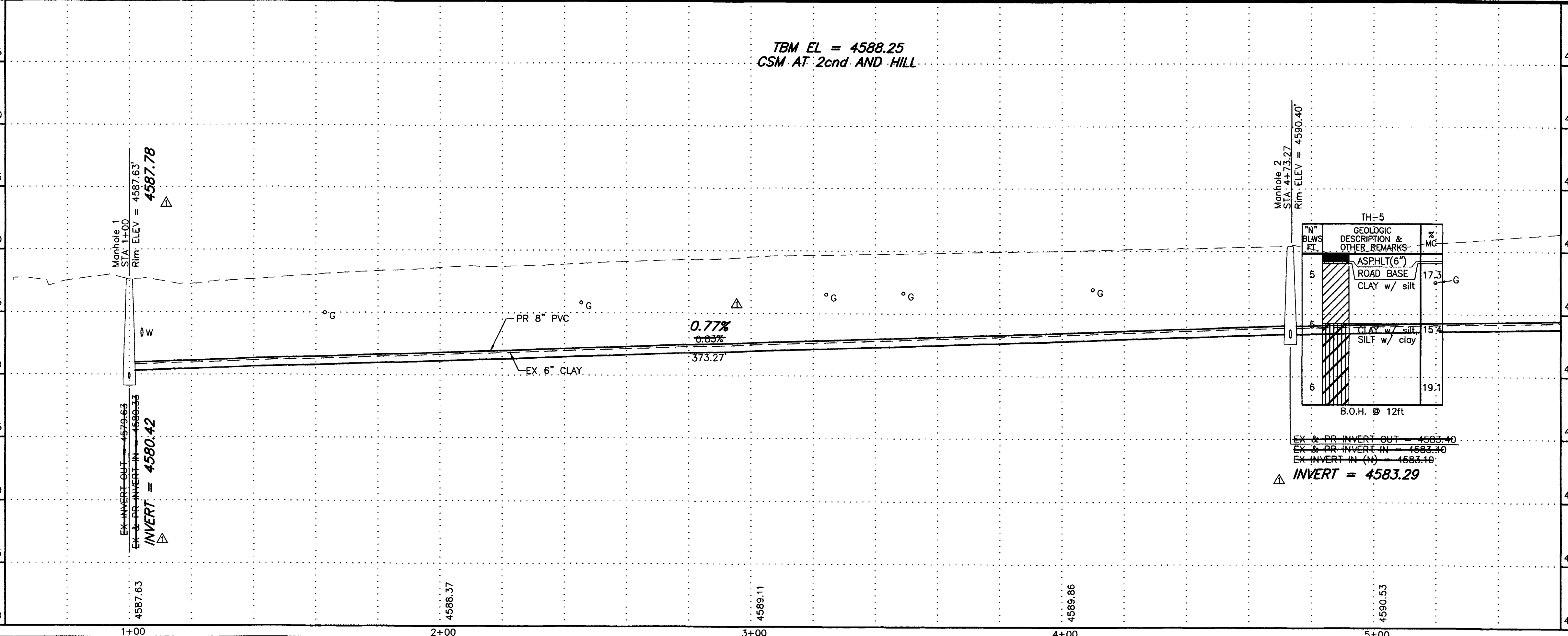
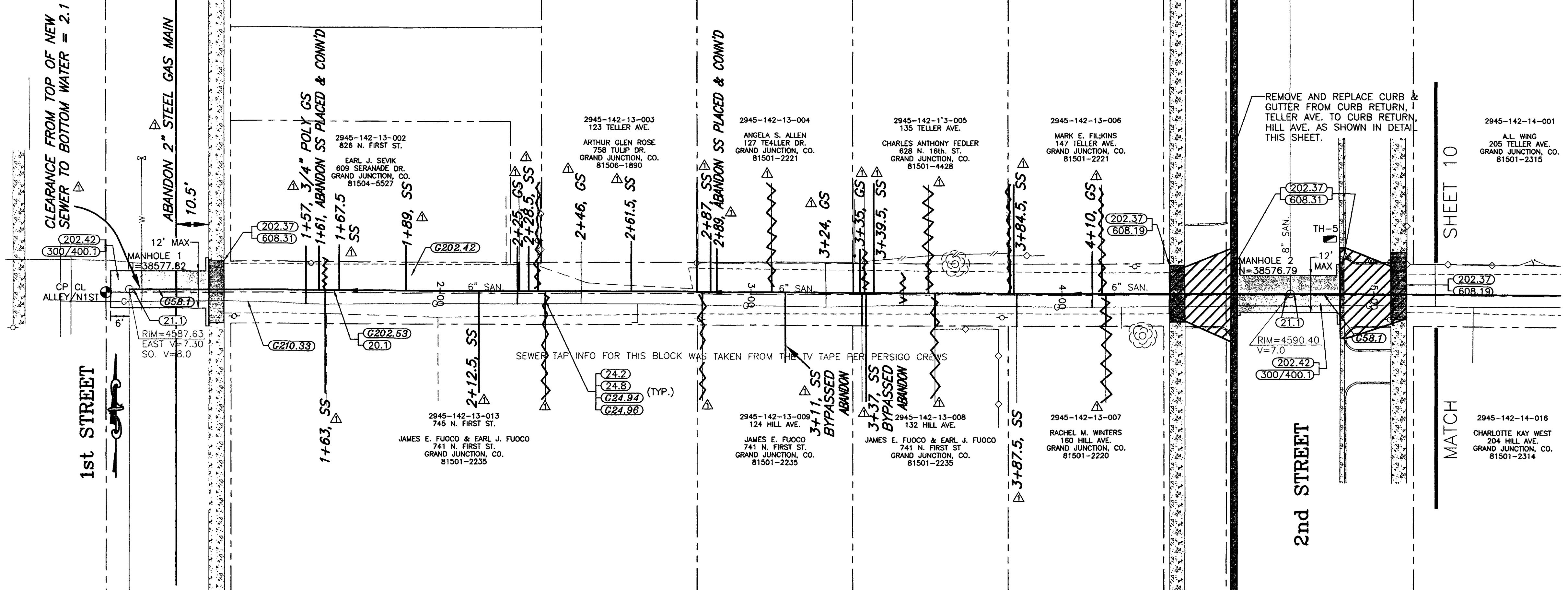
1999 SEWER LINES REPLACEMENT
 Mesa, Texas, 21st to 23rd
 SHEET 8A
 FILENAME SS020101.DWG
 02103109.tif

SHADING AND TEXTURE LEGEND

FACILITY OR SURFACE TREATMENT	EXISTING	PROPOSED	REMOVE & REPLACE
ASPHALT PAVEMENT	[Pattern]	[Pattern]	[Pattern]
CONCRETE (C, G, SW AT STREETS)	[Pattern]	[Pattern]	[Pattern]

CONSTRUCTION NOTES

- 20.1 CONSTRUCT 8" SDR 35 PVC SANITARY SEWER.
- 21.1 CONNECT THE PROPOSED SEWERLINE TO THE EXISTING MH, AND GROUT SEAL AROUND PIPE.
- 24.2 REPLACE ALL EXISTING ACTIVE SEWER SERVICE FROM THE NEW SEWER TAP TO THE ALLEY ROW OR AT 3 FEET MAXIMUM LENGTH IN STREET ROW.
- 24.8 INSTALL FULL BODY WYE SEWER TAP AND CONNECT TO ALL ACTIVE EXISTING SEWER SERVICES (INCLUDE WYE, RISER PIPE, AND BEND).
- G24.94 NOT ALL SEWER SERVICES MAY BE SHOWN. THE CONTRACTOR SHALL LOCATE ALL ACTIVE SERVICES AND PROVIDE AS-CONSTRUCTED LOCATIONS FOR ALL TAPS. WORK SHALL BE PAID FOR UNDER THE APPROXIMATE BID ITEM.
- G24.96 USE OF DYE IS EFFECTIVE IN LOCATING ACTIVE SEWER TAPS. IF IN DOUBT AS TO WHETHER A TAP IS ACTIVE OR NOT, REPLACE AND RECONNECT.
- G58.1 CONSTRUCT CUT-OFF WALL PER STANDARD SPECIFICATIONS.
- 202.37 REMOVE CONCRETE CURB, GUTTER, SIDEWALKS, DRIVEWAYS, PAVEMENT, AND/OR SLABS TO JOINTS OR DIMENSIONS WHERE SHOWN; OTHERWISE, REMOVE AS REQUIRED FOR CONSTRUCTION. SAWCUT AS NECESSARY.
- 202.42 REMOVE ASPHALT PAVEMENT AS REQUIRED FOR CONSTRUCTION.
- G202.42 THIS ALLEY MAY HAVE ASPHALT PAVEMENT, THE REMOVAL OF WHICH IS UNCLASSIFIED, AND SHALL BE PAID FOR UNDER THE APPLICABLE BID SCHEDULE ITEM.
- G202.53 REMOVE SANITARY SEWER.
- G210.33 COORDINATE RELOCATION OF GAS LINE.
- 300/400.1 CONSTRUCT PAVEMENT STRUCTURE PER SPECIAL PROVISIONS.
- 608.19 REPLACE REMOVED CONCRETE SIDEWALK TO JOINTS AS APPLICABLE, MATCHING GRADES AT TIE-IN.
- 608.31 CONSTRUCT CONCRETE DRIVEWAY.



REVISION	DESCRIPTION	DATE
ASBUILT		9-25-02

SCALE	PLAN	PROFILE	SECTIONS
HORIZONTAL	0 10 20 40	0 10 20 40	
VERTICAL		0 2.5 5 10	

WILLIAMS ENGINEERING
 1231 19 ROAD, FRUITA, COLORADO 81521-9689
 (970) 858-1014 PHONE (970) 858-1007 FAX

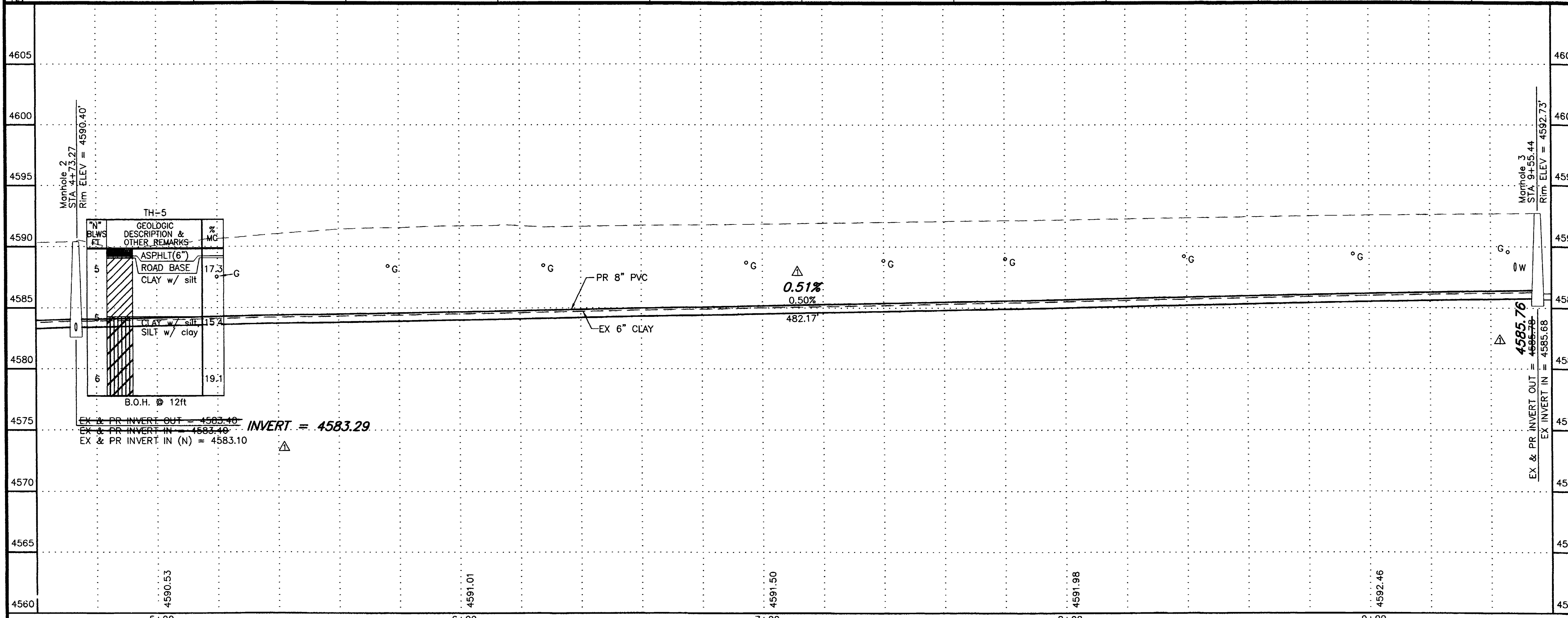
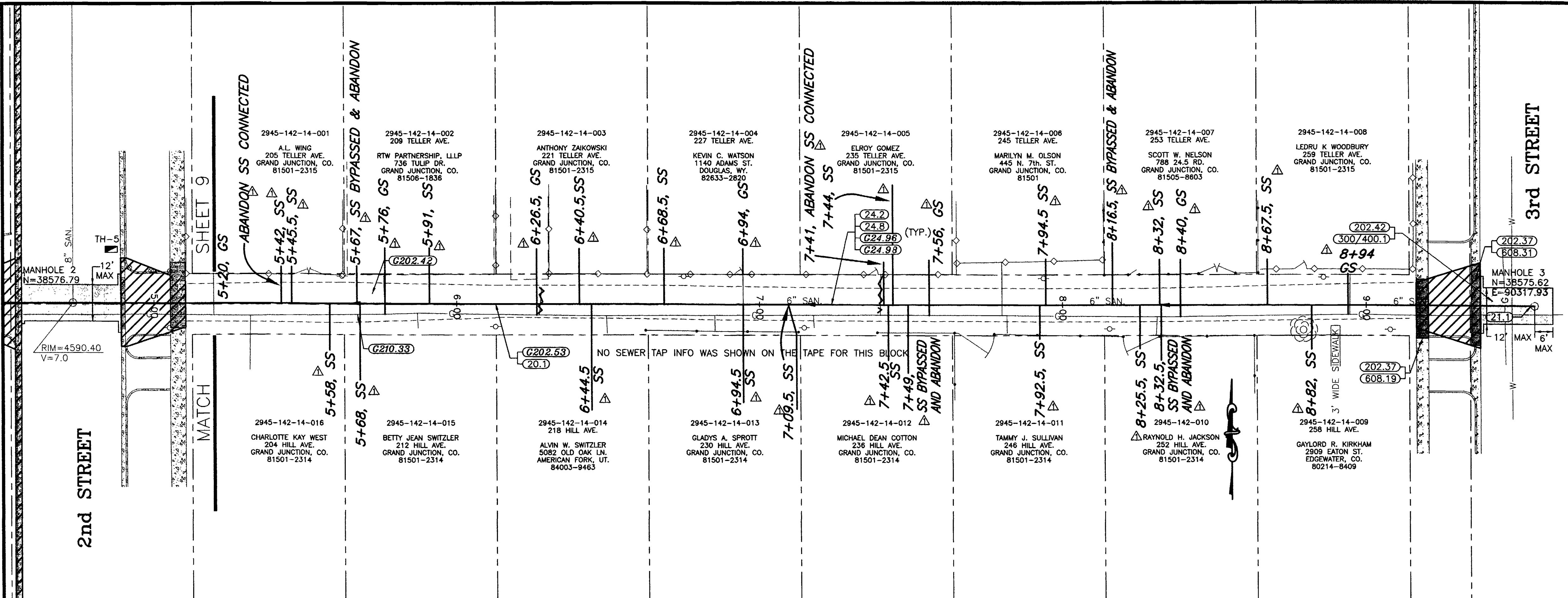
1999 SEWER LINES REPLACEMENT
 Teller, Hill, 1st to 3rd
 SHEET 9
 FILENAME: SSO10101.DWG
 20103110.tif

SHADING AND TEXTURE LEGEND

FACILITY OR SURFACE TREATMENT	EXISTING	PROPOSED	REMOVE & REPLACE
ASPHALT PAVEMENT	[Pattern]	[Pattern]	[Pattern]
CONCRETE (C, G, SW AT STREETS)	[Pattern]	[Pattern]	[Pattern]

CONSTRUCTION NOTES

- 20.1 CONSTRUCT 8" SDR 35 PVC SANITARY SEWER.
- 21.1 CONNECT THE PROPOSED SEWERLINE TO THE EXISTING MH, AND GROUT SEAL AROUND PIPE.
- 24.2 REPLACE ALL EXISTING ACTIVE SEWER SERVICE FROM THE NEW SEWER TAP TO THE ALLEY ROW OR AT 3 FEET MAXIMUM LENGTH IN STREET ROW.
- 24.8 INSTALL FULL BODY WYE SEWER TAP AND CONNECT TO ALL ACTIVE EXISTING SEWER SERVICES (INCLUDE WYE, RISER PIPE, AND BEND).
- G24.96 USE OF DYE IS EFFECTIVE IN LOCATING ACTIVE SEWER TAPS. IF IN DOUBT AS TO WHETHER A TAP IS ACTIVE OR NOT, REPLACE AND RECONNECT.
- G24.98 SEWER TAP INFORMATION IS NOT AVAILABLE FOR THIS AREA. THE CONTRACTOR SHALL LOCATE ALL ACTIVE SERVICES AND PROVIDE AS-CONSTRUCTED LOCATIONS FOR ALL TAPS. WORK SHALL BE PAID FOR UNDER THE APPROXIMATE BID ITEM.
- 202.37 REMOVE CONCRETE CURB, CUTTER, SIDEWALKS, DRIVEWAYS, PAVEMENT, AND/OR SLABS TO JOINTS OR DIMENSIONS WHERE SHOWN; OTHERWISE, REMOVE AS REQUIRED FOR CONSTRUCTION. SAWCUT AS NECESSARY.
- 202.42 REMOVE ASPHALT PAVEMENT AS REQUIRED FOR CONSTRUCTION.
- G202.42 THIS ALLEY MAY HAVE ASPHALT PAVEMENT, THE REMOVAL OF WHICH IS UNCLASSIFIED, AND SHALL BE PAID FOR UNDER THE APPLICABLE BID SCHEDULE ITEM.
- G202.53 REMOVE SANITARY SEWER.
- G210.33 COORDINATE RELOCATION OF GAS LINE.
- 300/400.1 CONSTRUCT PAVEMENT STRUCTURE PER SPECIAL PROVISIONS.
- 608.19 REPLACE REMOVED CONCRETE SIDEWALK TO JOINTS AS APPLICABLE, MATCHING GRADES AT TIE-IN.
- 608.31 CONSTRUCT CONCRETE DRIVEWAY.

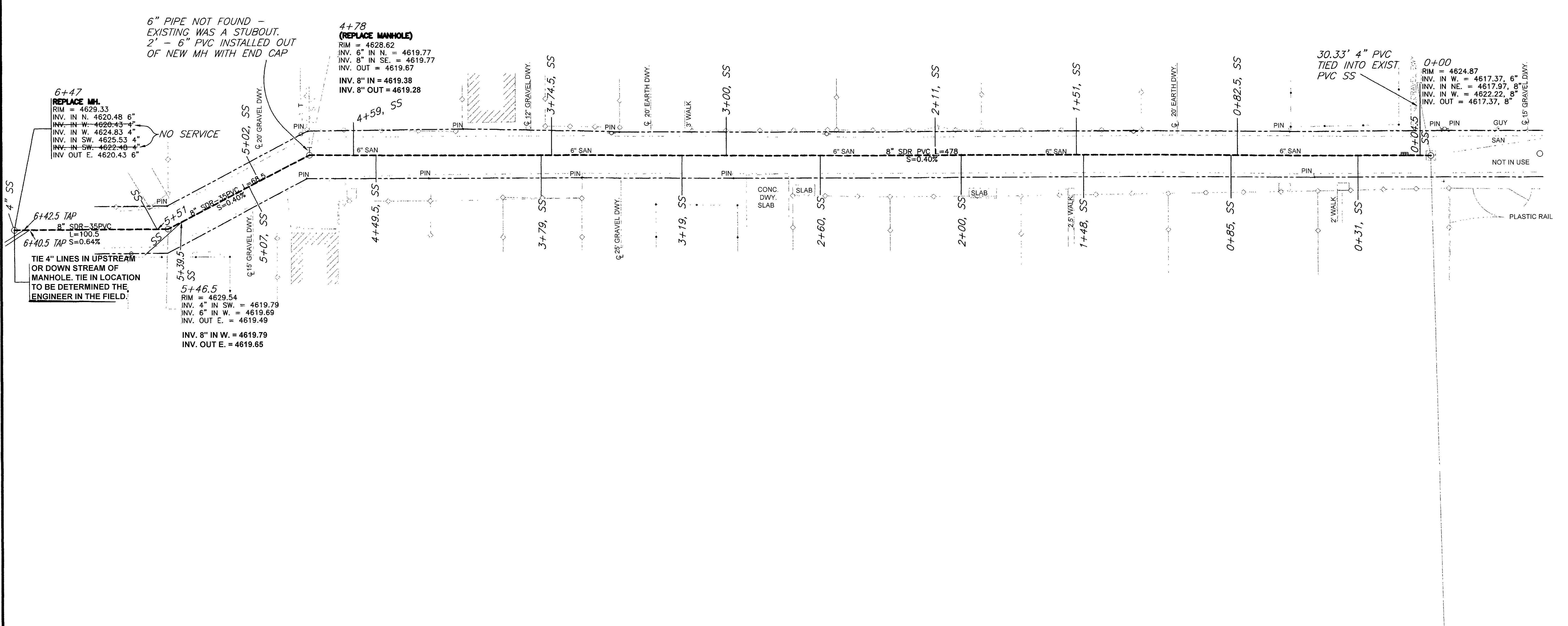


REVISION	DATE
REVISION Δ ASBUILT	9-25-02
REVISION Δ	
REVISION Δ	

SCALE	PLAN	PROFILE	SECTIONS
HORIZONTAL	0 10 20 40	0 10 20 40	
VERTICAL		0 2.5 5 10	

WILLIAMS ENGINEERING
 1231 19 ROAD, FRUITA, COLORADO 81521-9689
 (970) 858-1014 PHONE (970) 858-1007 FAX

1999 SEWER LINES REPLACEMENT
 Teller, Hill, 1st to 3rd
 SHEET 10
 FILENAME SS010201.DWG
 02103111.tif



6" PIPE NOT FOUND -
EXISTING WAS A STUBOUT.
2' - 6" PVC INSTALLED OUT
OF NEW MH WITH END CAP

4+78
(REPLACE MANHOLE)
RIM = 4628.62
INV. 6" IN N. = 4619.77
INV. 8" IN SE. = 4619.77
INV. OUT = 4619.67
INV. 8" IN = 4619.38
INV. 8" OUT = 4619.28

6+47
REPLACE MH.
RIM = 4629.33
INV. IN N. 4620.48 6"
INV. IN W. 4620.43 4"
INV. IN SW. 4625.53 4"
INV. IN SE. 4622.48 4"
INV. OUT E. 4620.43 6"

NO SERVICE

30.33' 4" PVC
TIED INTO EXIST.
PVC SS

0+00
RIM = 4624.87
INV. IN W. = 4617.37, 6"
INV. IN NE. = 4617.97, 8"
INV. IN W. = 4622.22, 8"
INV. OUT = 4617.37, 8"

6+42.5 TAP
8" SDR-35 PVC
L=100.5
S=0.64%

TIE 4" LINES IN UPSTREAM
OR DOWN STREAM OF
MANHOLE. TIE IN LOCATION
TO BE DETERMINED THE
ENGINEER IN THE FIELD.

5+46.5
RIM = 4629.54
INV. 4" IN SW. = 4619.79
INV. 6" IN W. = 4619.69
INV. OUT E. = 4619.49
INV. 8" IN W. = 4619.79
INV. OUT E. = 4619.65

REVISION	DESCRIPTION	DATE
ASBUILT		9-02

DRAWN BY	DATE
CHECKED BY	DATE
APPROVED BY	DATE
FIELD BOOK NO.	PAGE

SCALE	
PLAN	PROFILE
HORIZ. 1"=20'	HORIZ. 1"=20'
	VERT. 1"=5'

DEPARTMENT OF PUBLIC WORKS AND UTILITIES
ENGINEERING DIVISION
CITY OF GRAND JUNCTION, COLORADO

LINDA LANE / ORCHARD SEWER 1999
ALLEY SECTION
Plan

SHEET NO. 10A
FILE NO. lindaally.dwg