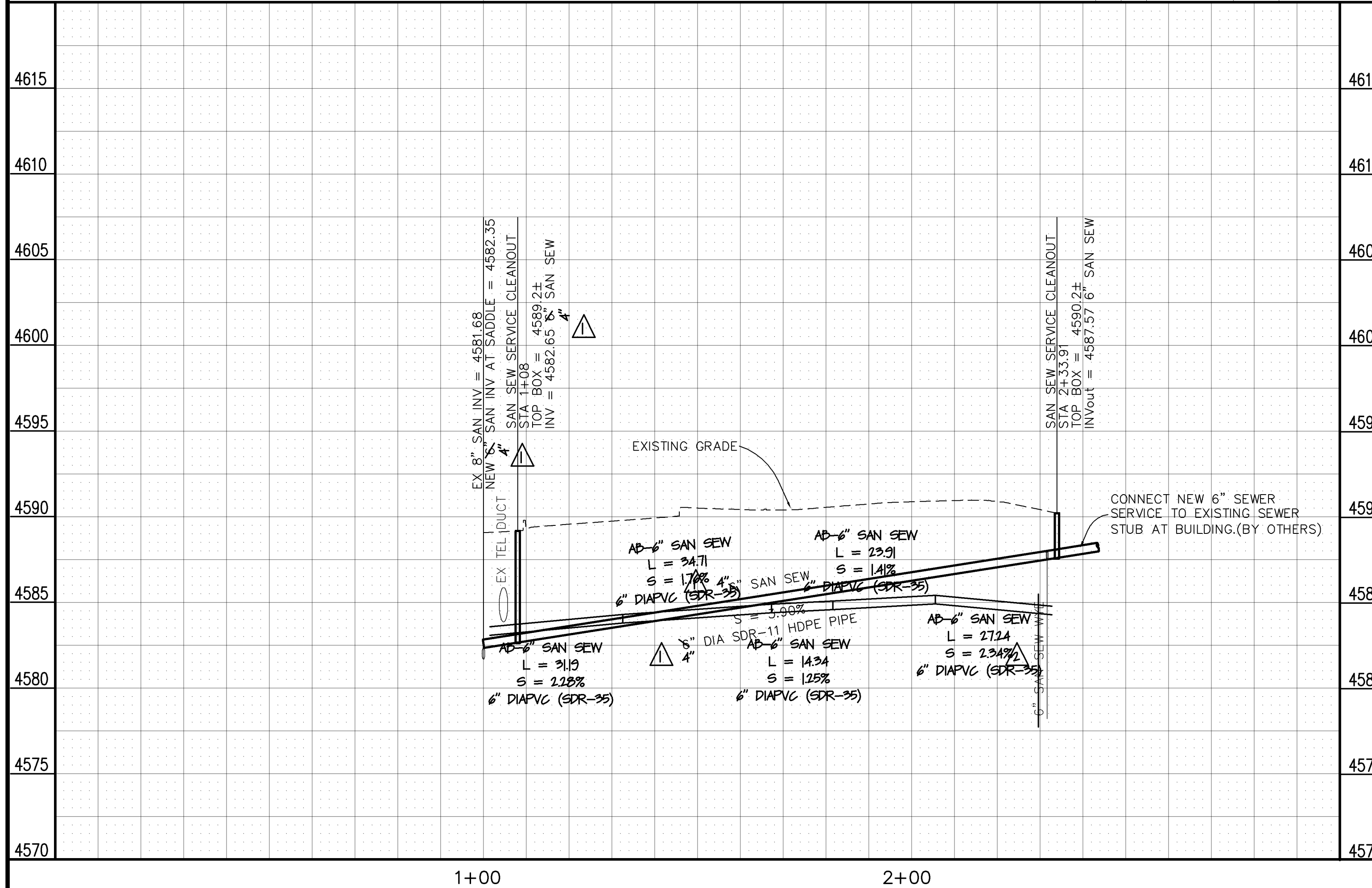
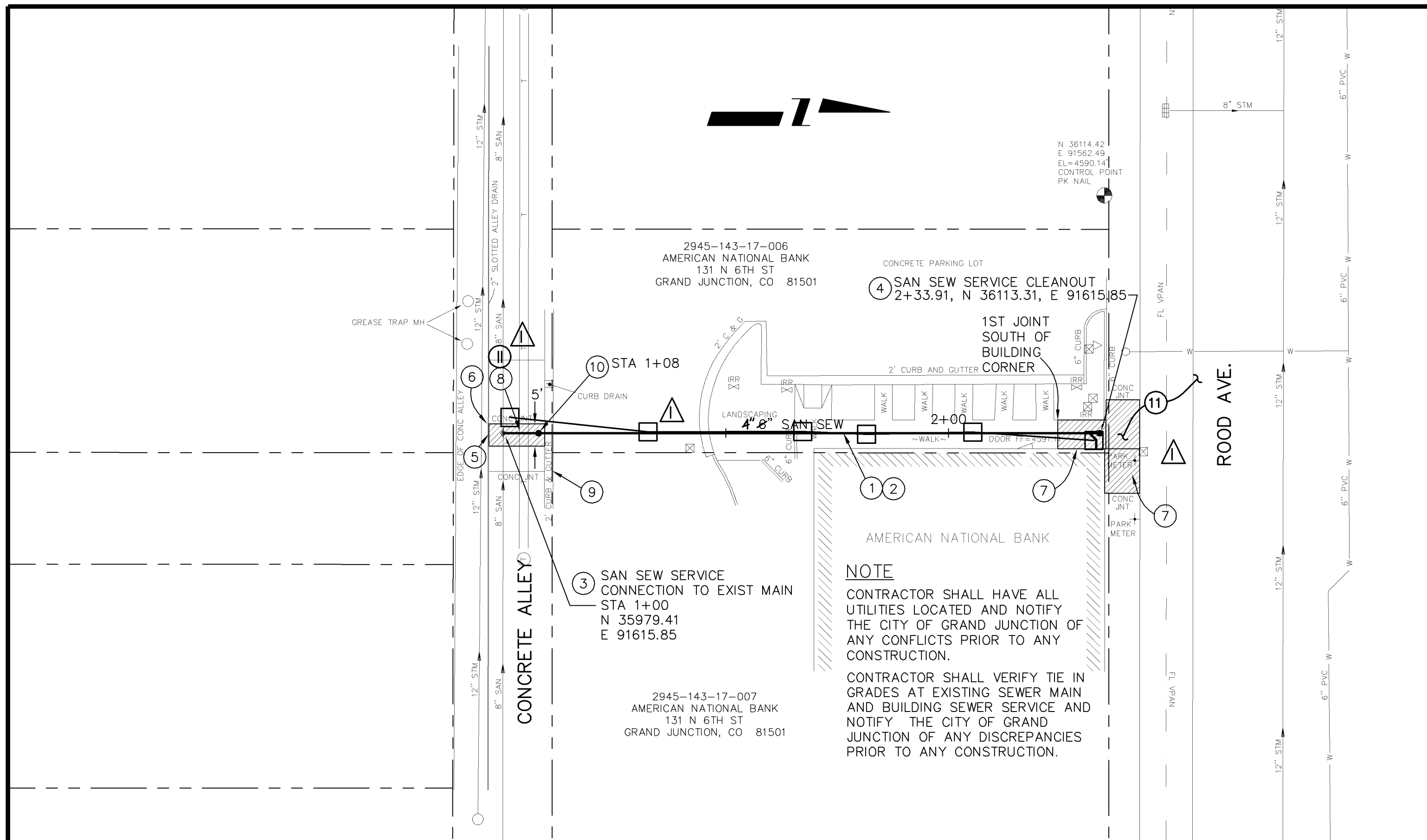
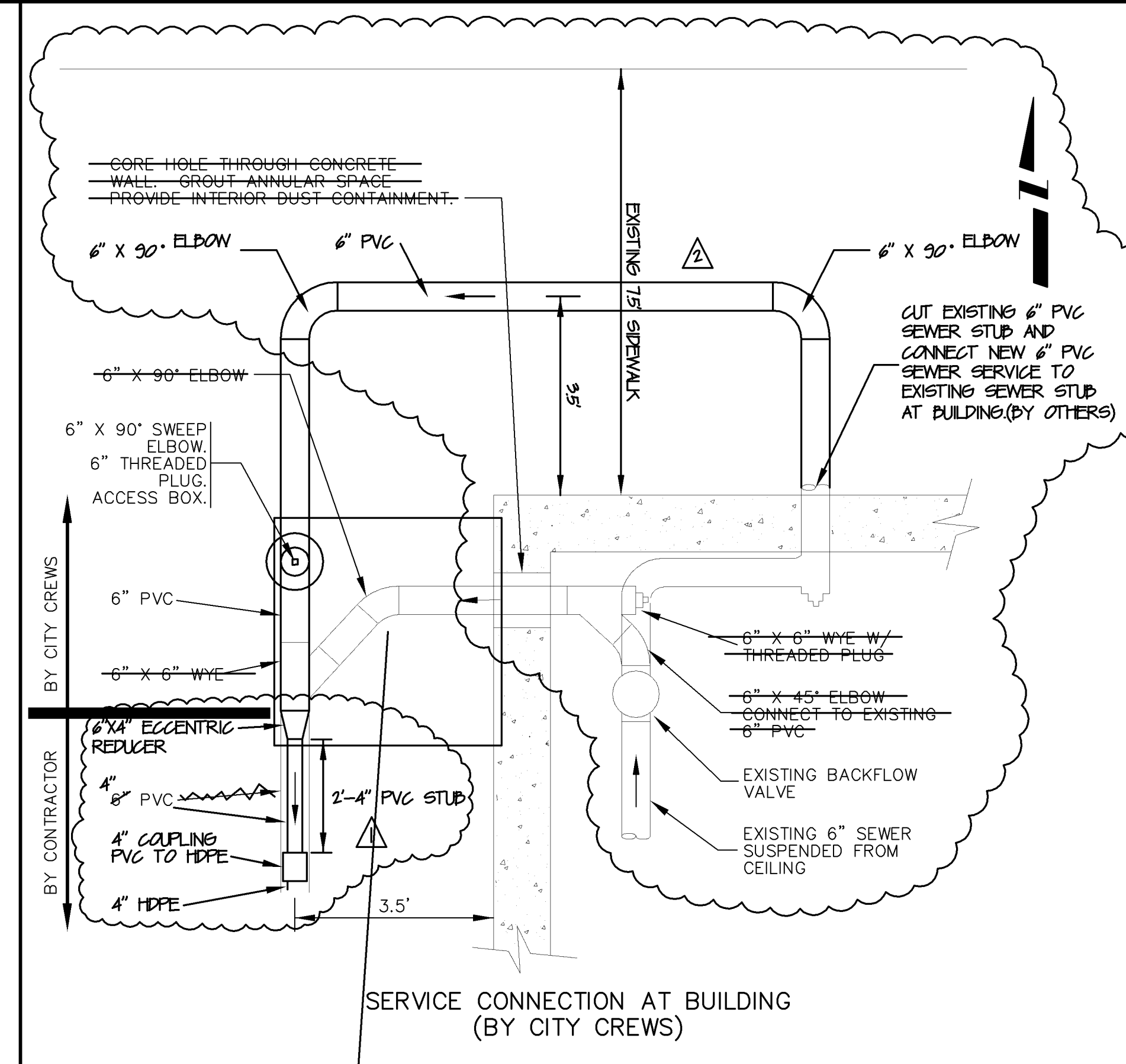


CONSTRUCTION NOTES

- ① 102.9C - CARRIER/CASING SEWER PIPE FOR BORE SHALL BE 4" DIA. SDR-11 HDPE PIPE.
- ② 104.2A - INSTALL SEWER PIPE BY BORING AND JACKING OR DIRECTIONAL DRILLING PER SPECIAL PROVISIONS.
- ③ CITY CREWS WILL MAKE CONNECTION TO EXISTING MAIN
- ④ CITY CREWS WILL MAKE CONNECTION TO SERVICE AT EXISTING BUILDING AND INSTALL SERVICE CLEANOUT. SEE DETAIL FOR ADDITIONAL INFORMATION.
- ⑤ 202/608 - REMOVE AND REPLACE CONCRETE ALLEY SECTION (8" THICK) (BY OTHERS)
- ⑥ PROTECT SLOTTED DRAIN IN PLACE
- ⑦ 202/608 - REMOVE AND REPLACE CONCRETE SIDEWALK. (4" THICK) (BY OTHERS)
- ⑧ CONTRACTOR SHALL NOTIFY UTILITY COMPANY 48 HOURS PRIOR TO EXCAVATIONS THAT WILL EXPOSE UTILITY LINE.
- ⑨ PROTECT CURB AND GUTTER
- ⑩ SEWER SERVICE CLEANOUT/PLUG/ACCESS BOX BY CITY CREWS
- ⑪ CONTRACTOR SHALL PROVIDE ALL TRAFFIC CONTROL IN ROOD AVENUE AND ALLEY TO INSTALL BORING PITS AND HDPE PIPE.



REVISION	DESCRIPTION	DATE
REVISION Δ	6" SERVICE LINE REVISED TO 4" BY MC	6-1-05
REVISION Δ	6" CONNECTION LINE LOCATION REVISED-CM	6-3-05
REVISION Δ		
REVISION Δ		

DRAWN BY	JCS	DATE	2005
DESIGNED BY		DATE	
CHECKED BY		DATE	
APPROVED BY		DATE	

SCALES:	PLAN	PROFILE
	1" = 20'	HORIZONTAL 1" = 20' VERTICAL 1" = 2'



PUBLIC WORKS
AND UTILITIES
ENGINEERING DIVISION

AMERICAN NATIONAL BANK SEWER SERVICE
SANITARY SEWER PLAN AND PROFILE