

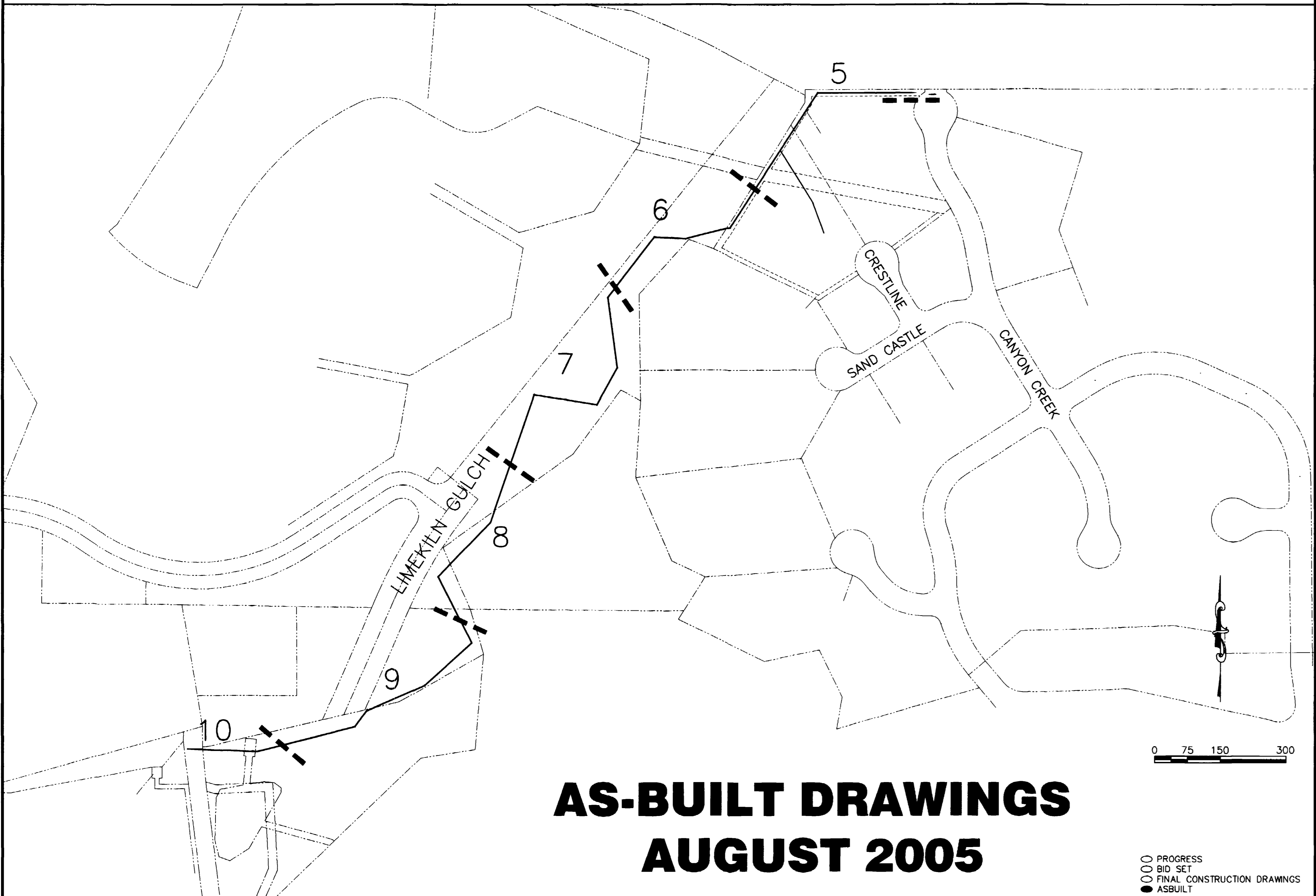
LIMEKILN GULCH INTERCEPTOR

JANUARY 2005

CITY OF GRAND JUNCTION MODIFICATIONS - 12/04

VICINITY MAP & GRAPHICAL SHEET INDEX

SHEET INDEX



SHEET #	SHEET DESCRIPTION
1	COVER SHEET
2	QUANTITIES SUMMARY
3	DRAFTING STANDARDS & ABBREVIATIONS
4	DETAILS (BOLLARD, COFFER DAM, FORCE MAIN CLEANOUT VAULT, SEDIMENT TRAP & WATERWAY CROSSING)
5-10	LIMEKILN GULCH INTERCEPTOR
11	STORM WATER MANAGEMENT PLAN

AS-BUILT DRAWINGS
AUGUST 2005

- PROGRESS
- BID SET
- FINAL CONSTRUCTION DRAWINGS
- ASBUILT

GENERAL NOTES

- G01 UNLESS NOTED OTHERWISE, STANDARD DETAILS AND SPECIFICATIONS AND SPECIAL PROVISIONS APPLY.
- G02 NOTES NUMBERED BETWEEN 20 AND 108 PERTAIN TO WORK GOVERNED BY THE CITY OF GRAND JUNCTION'S STANDARD SPECIFICATIONS, AS MAY BE MODIFIED BY PROJECT CONTRACT DOCUMENTS.
- G03 NOTES NUMBERED BETWEEN 200 AND 699 PERTAIN TO WORK GOVERNED BY CORRESPONDING SECTIONS OF THE CDOT STANDARD SPECIFICATIONS FOR ROAD AND BRIDGE CONSTRUCTION, AS MAY BE MODIFIED BY OWNER STANDARD SPECIFICATIONS AND/OR PROJECT CONTRACT DOCUMENTS.
- G04 NOTES NUMBERED ABOVE 1000 PERTAIN TO MISCELLANEOUS WORK NOT GOVERNED BY STANDARD SPECIFICATIONS.
- G05 NOTE NUMBERS PRECEDED WITH A "G" ARE INFORMATIONAL OR GENERAL IN NATURE AND, AS INCIDENTAL TO THE WORK, ARE NO-PAY ITEMS.
- G06 PROPERTY LINES SHOWN ARE APPROXIMATE ONLY. THEY ARE BASED UPON PLATS AND DEED DESCRIPTIONS, BUT LOTS, SUBDIVISIONS, AND PARCELS DO NOT CLOSE NOR FIT PRECISELY, SO PROPERTIES ARE SHOWN IN SOMEWHAT OF A BEST FIT FASHION.
- G07 THE LOCATION OF UNDERGROUND FACILITIES SHOWN ON THESE PLANS ARE APPROXIMATE ONLY. THE CONTRACTOR SHALL BE RESPONSIBLE FOR LOCATING ALL UTILITIES IN THE FIELD AS NECESSARY BEFORE PERFORMING ANY WORK WHICH MAY AFFECT THEM.
- G08 SOIL BORE INFORMATION FOR BORINGS LOCATED ON THESE PLANS AND IDENTIFIED BY "TH-*" IS PROVIDED IN THE APPENDIX OF THE BID DOCUMENTS.
- G09 ELEVATIONS AND CONTOURS IN R.O.W. ARE BASED UPON SURVEY SHOTS AND ARE FAIRLY ACCURATE. THESE WERE MERGED WITH ADJUSTED 2 FOOT CONTOURS FROM 1970 B.O.R. AERIAL PHOTOGRAPHY TO PROVIDE CONTOURS INSIDE OF LOTS. ALSO, HOUSES ARE SHOWN AS TAKEN FROM 1994 AND 1997 AERIAL PHOTOS AND ARE APPROXIMATE ONLY.

UTILITIES AND AGENCIES

AGENCY	NAME	POSITION	ROLE	MAILING ADDRESS	STREET ADDRESS	CITY, STATE	VOICE-WK	VOICE-HM	FAX	CELL
ARMY CORPS OF ENGINEERS	NICK MEZEI	ENGINEER	WETLANDS	402 ROOD AVE., RM 142	402 ROOD AVE., RM 142	GRAND JCT., CO 81501	(970) 243-1199		(970) 241-2358	
COLORADO DIV. OF WILDLIFE	SHAUN DEENEY	DIV. OF WILDLIFE MGR.	SEDIMENT TRAP	711 INDEPENDENT AVE	711 INDEPENDENT AVE	GRAND JCT., CO 81505	(970) 255-6176			
GRAND JUNCTION, CITY OF	KENT HARBERT	PROJECT ENGINEER	PROJECT ENGINEER	250 N. 5th STREET	250 N. 5th STREET	GRAND JCT., CO 81501	(970) 244-1445		(970) 256-4022	
TCI/ATT	GLENN VANCIL		CABLE TV	2502 FORESIGHT CIRCLE	2502 FORESIGHT CIRCLE	GRAND JCT., CO 81504	(970) 245-8750		(970) 245-6803	
U.S. WEST/QWEST	DAN WISEMAN	ENGINEER	TELEPHONE	2524 BLICKMAN ROAD	2524 BLICKMAN ROAD	GRAND JCT., CO 81504	(970) 244-4311		(970) 240-4349	
UTE WATER	ED TOLIN	ENGINEER	WATER	PO BOX 460		GRAND JCT., CO 81502	(970) 242-7491		(970) 242-9189	
XCEL	HAROLD BALL	PLANNER	GAS, ELECTRIC	2538 BLICKMAN ROAD	2538 BLICKMAN ROAD	GRAND JCT., CO 81504	(970) 244-2626		(970) 244-2661	

APPROVALS

AGENCY	SIGNATURE	DATE

PREPARED BY

GR WILLIAMS ENGINEERING, INC
1231 19 Road
Fruita, CO 81521-9689
(970) 858-1014 Phone
(970) 858-1007 FAX

Limekiln Gulch Inteceptor				
Item No.	Ref. No.	Description	Quantity	Units
1	108.2	8" Gravity sewer pipe (SDR 35 PVC)	2,293.00	Lin. Ft.
2	108.2	Sewer trench cut-off wall	22.00	Each
3	108.2	8" Gravity sewer pipe (horizontal directional bore or drill) (Yelomine SDR 18 / HDPE SDR 11)	366.00	Lin. Ft.
4	108.2	8" Pressure sewer pipe (C-900 PVC)	25.00	Lin. Ft.
5	108.2	12" Culvert (HDPE)	60.00	Lin. Ft.
6	108.5	Sanitary sewer basic manhole components (48" I.D.)	17.00	Each
7	108.5	Manhole barrel (D > 5') (48" I.D.)	57.50	Lin. Ft.
8	108.5	Connect to existing manhole	1.00	Each
9	108.5	Sanitary sewer structure (Special) (in-line storage vault)	1.00	LS
10	108.7	Granular stabilization material (Type B)	1,000	Ton
11	201	Clearing and grubbing	1.00	LS
12	202	Remove building	1.00	LS
13	202	Remove lift station and surge vault (Disassemble and salvage pump, piping and components and deliver to Persigo Treatment Plant. Remove structures to 1' below ground level. Fill with sand (35 CY±). Cap with 12" of native soil.)	1.00	LS
14	202	Removal of tree (12" to 24" dia.)	1.00	Each
15	202	Remove culvert	80.00	Lin. Ft.
16	202	Plug force main at manhole	1.00	Each
17	203	Rock excavation	400.00	Cu. Yd.
18	203	Potholing	8.00	Hours
19	208	Sediment trap	1.00	Each
20	208	Waterway crossing	6.00	Each
21	208	Silt fence or erosion log	2,500	Lin. Ft.
22	208	Erosion control supervisor	1.00	LS
23	210	Reset fence	250.00	Lin. Ft.
24	210	Reset riprap at storm drain outlets	2.00	Each
25	212	Seeding (native) (0.8 Ac. ±)	1.00	LS
26	213	Mulch (0.8 Ac. ±)	1.00	LS
27	625	Construction surveying	1.00	LS
28	626	Mobilization	1.00	LS

AS-BUILT

DESCRIPTION	DATE	SCALE	PLAN	DETAILS	SECTIONS	GR WILLIAMS ENGINEERING, INC 1231 19 ROAD, FRUITA, COLORADO 81521-9689 (970) 858-1014 PHONE (970) 858-1007 FAX	LIMKILN GULCH QUANTITIES	2
REVISION A CITY OF GRAND JUNCTION MODIFICATIONS	12/04	HORIZONTAL		NTS				FILENAME
REVISION B ADDENDUM NO.1	1/14/05	VERTICAL						02.DWG
REVISION C ASBUILT DRAWINGS	8/2005							02108602.tif

DRAFTING STANDARDS AND ABBREVIATIONS

ENTITY DESCRIPTION

LINE TYPE	BLOCK	SPACING
PROPERTY OR TRACT LINE	ROW	-
RAILROAD	CONTINUOUS RAIL	4
EDGE OF PAVEMENT	DASHED	-
RIGHT OF WAY	ROW	-
BARBED WIRE FENCE	CONTINUOUS BARB	15
CHAIN LINK FENCE	CONTINUOUS CHAIN	15
BARRIER TYPE FENCE	CONTINUOUS BARRIER	15
WOVEN WIRE FENCE	CONTINUOUS WOVEN	15
WOOD FENCE	CONTINUOUS WOOD	15
EXISTING GUARD RAIL	CONTINUOUS GUARD	5
NEW GUARD RAIL	CONTINUOUS NEWGUARD	5
RETAINING WALL	CONTINUOUS RETAIN	6
SIDEWALK	CONTINUOUS	-
CURB & GUTTER	CONTINUOUS	-
CURB, GUTTER & SIDEWALK	CONTINUOUS	-
BURIED TELEPHONE CABLE	CONTINUOUS	-
BURIED ELECTRIC CABLE	CONTINUOUS	-
GAS LINE	CONTINUOUS	-
GAS, ELECTRIC, TELEPHONE, & TV IN JOINT TRENCH	CONTINUOUS	-
WATER LINE	CONTINUOUS	-
SANITARY SEWERS	CONTINUOUS AROW	-
STORM DRAINS	CONTINUOUS AROW	-
UNDERGROUND IRRIG. PIPE	CONTINUOUS AROW	-
SIPHON PIPE	CONTINUOUS AROW	-
EARTH DITCH	DIVIDE	-
CONCRETE DITCH	CONTINUOUS	-
CULVERT	DASHED	-
CULVERT WITH HEADWALL	DASHED	-
CULVERT WITH END SECTION	DASHED	-
MONUMENT LINE	CONTINUOUS	-
CONTROL LINE	CONTINUOUS	100
MATCH LINE	CONTINUOUS	-

LIST OF ABBREVIATIONS

AASHTO	AMERICAN ASSOCIATION OF STATE HIGHWAY & TRANSPORTATION OFFICIALS
ACP	ASBESTOS CEMENT PIPE
ASTM	AMERICAN SOCIETY FOR TESTING MATERIALS
AWWA	AMERICAN WATER WORKS ASSOCIATION
BC	BACK OF CURB
BCR	BEGIN CURB RETURN
BF	BUTTERFLY
BOP	BEGINNING OF PROJECT
BOT	BOTTOM
BW	BACK OF WALK
C	CHORD LENGTH
CAP	CORRUGATED ALUMINUM PIPE
CATV	CABLE TV (SEE ALSO TV)
CDOT	COLORADO DEPARTMENT OF TRANSPORTATION
CG & SW	CURB, GUTTER & SIDEWALK
CH	CHORD
CIP	CAST IRON PIPE
CL	LONG CHORD
CL	CENTER LINE
CL or CI	CLEAR
CMP	CORRUGATED METAL PIPE
C.O.	CLEAN OUT (SEWER SERVICE)
CONC	CONCRETE
CP	CONTROL POINT
CS	SHORT CHORD
CSP	CORRUGATED STEEL PIPE
CU	COPPER
D _a	DEGREE OF CURVE ARC
D _c	DEGREE OF CURVE CHORD
DIP	DUCTILE IRON PIPE
DR or DWY	DRIVEWAY
E	EASTING
ECR	END CURB RETURN
EL or ELEV	ELEVATION
ELEC OR E	ELECTRIC
EOP	END OF PROJECT
EP	EDGE OF PAVEMENT
EX	EXISTING
FB	FULL BODY
FC	FACE OF CURB
FF	FINISH FLOOR
FG	FINISHED GRADE
F	FLOW LINE
FL	FLANGE
FS	FAR SIDE
FTG	FOOTING
G	GAS
GV	GATE VALVE
I	DEFLECTION ANGLE
I _c	INTERIOR ANGLE
IRRIG OR IR	IRRIGATION
K	ABSCISSA OF THE SHIFTED PC
L	LENGTH OF ARC
LF	LINEAR FEET
LL	LONG ARC
LS	SHORT ARC
LT	LEFT
M	MIDDLE ORDINATE
MH	MANHOLE
MJ	MECHANICAL JOINT
MW	MILL WRAP
N	NORTHING
N/A	NOT APPLICABLE
NIC	NOT IN CONTRACT
NRCP	NON-REINFORCED CONCRETE PIPE
NS	NEAR SIDE
NTS	NOT TO SCALE
PC	POINT OF CURVATURE
PCC	PORTLAND CEMENT CONCRETE
PE	POLYETHYLENE
PI	POINT OF INTERSECTION
PR	PROPOSED
PRC	POINT OF REVERSE CURVATURE
PT	POINT OF TANGENCY
PVC	POLYVINYL CHLORIDE
R	RADIUS
RCP	REINFORCED CONCRETE PIPE
REQ'D	REQUIRED
RG	RESTRAINED GLANDS
RL	LONG RADIUS
ROW, R/W, RW	RIGHT OF WAY
RP	RADIUS POINT
RR	RAIL ROAD
RS	SHORT RADIUS
RT	RIGHT
S	SLOPE
SCH	SCHEDULE
STA	STATION
STL	STEEL
(TYP)	TYPICAL
T	LENGTH OF TANGENT OR TELEPHONE
TBM	TEMPORARY BENCH MARK
TC	TOP OF CURB OR CONCRETE
TH	TEST HOLE
TV	TELEVISION
UNO	UNLESS NOTED OTHERWISE
VC	VERTICAL CURVE
VCP	VITRIFIED CLAY PIPE
VPC	VERTICAL POINT OF CURVATURE
VPI	VERTICAL POINT OF INTERSECTION
VPT	VERTICAL POINT OF TANGENCY
Δ	DELTA ANGLE

SHADING AND TEXTURE LEGEND

FACILITY OR SURFACE TREATMENT	EXISTING	PROPOSED	REMOVE & REPLACE
ASPHALT PAVEMENT	[Pattern]	[Pattern]	[Pattern]
CONCRETE (C, G, SW, SLABS)	[Pattern]	[Pattern]	[Pattern]
CONCRETE (DWYs, RAMPS)	[Pattern]	[Pattern]	[Pattern]
CONCRETE (DECORATIVE)	[Pattern]	[Pattern]	[Pattern]
AGGREGATE GRAVEL	[Pattern]	[Pattern]	[Pattern]
LANDSCAPE ROCK ON PLASTIC	[Pattern]	[Pattern]	[Pattern]
GRASS SOD	[Pattern]	[Pattern]	[Pattern]
BUILDING	[Pattern]	[Pattern]	[Pattern]

PLOTTING PARAMETERS

COLOR NAME	PEN SIZE	SHADING
RED	0.50	100%
YELLOW	0.35	100%
GREEN	0.70	100%
CYAN	0.50	100%
BLUE	0.18	100%
MAGENTA	0.50	100%
WHITE	0.18	100%
8	0.18	100%
9	0.35	100%
16	0.25	100%
30	0.13	100%
31	0.07	100%
32	0.10	100%
250	0.25	80%
251	0.18	55%
252	0.18	40%
253	0.25	25%

BLOCKS

BLOCK NAME	SYMBOL
REDUCER	◼
CURBSTOP	•
PULL	⊠
SIGNAL	⊠
SIGN	+
TELEMAN	⊙
MANHOLE	○
BENCH	⊙
HEAD	⊙
MAILBOX	□
IRRUMP	⊠
STUMP	•
LITE	⊙
HYDRANT	⊙
OVALVE	⊙
VALVE	⊙
TELEBOX	△
POWER	⊙
GUY	⊙
TREE	⊙
BUSH	⊙
MCSM	⊙
WATERMETER	⊙
WATERHYDRANT	⊙
PIN	⊙
YLITE	⊙
GRATE	⊙
AROW	⊙
BARB	×
CHAIN	◇
BARRIER	///
WOVEN	///
WOOD	•
GUARD	□
NEWGUARD	•
RAIL	
CO	○
BOREHOLE	⊙

AS-BUILT

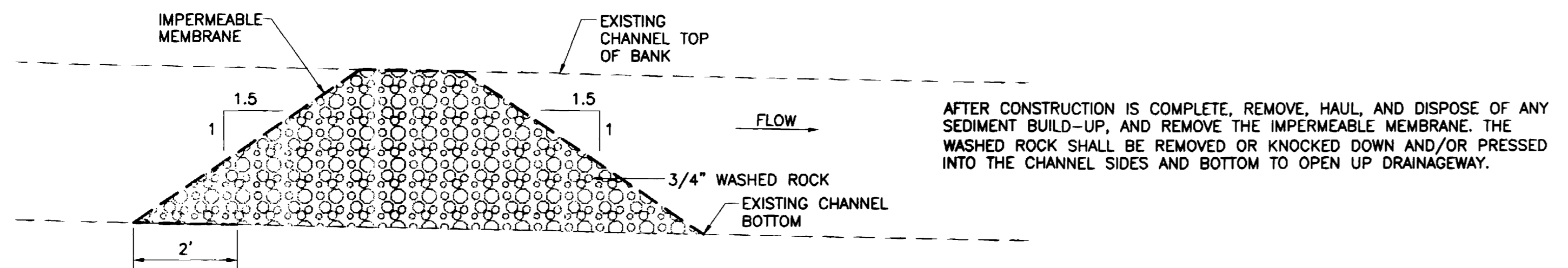
DESCRIPTION	DATE	SCALE	PLAN	PROFILE	SECTIONS
REVISION A CITY OF GRAND JUNCTION MODIFICATIONS	12/04	HORIZONTAL			
REVISION B ASBUILT DRAWINGS	8/2005	VERTICAL			

WILLIAMS ENGINEERING
1231 19 ROAD, FRUITA, COLORADO 81521-9689
(970) 858-1014 PHONE (970) 858-1007 FAX

LIMEKILN GULCH INTERCEPTOR
DRAFTING STANDARDS & ABBREVIATIONS

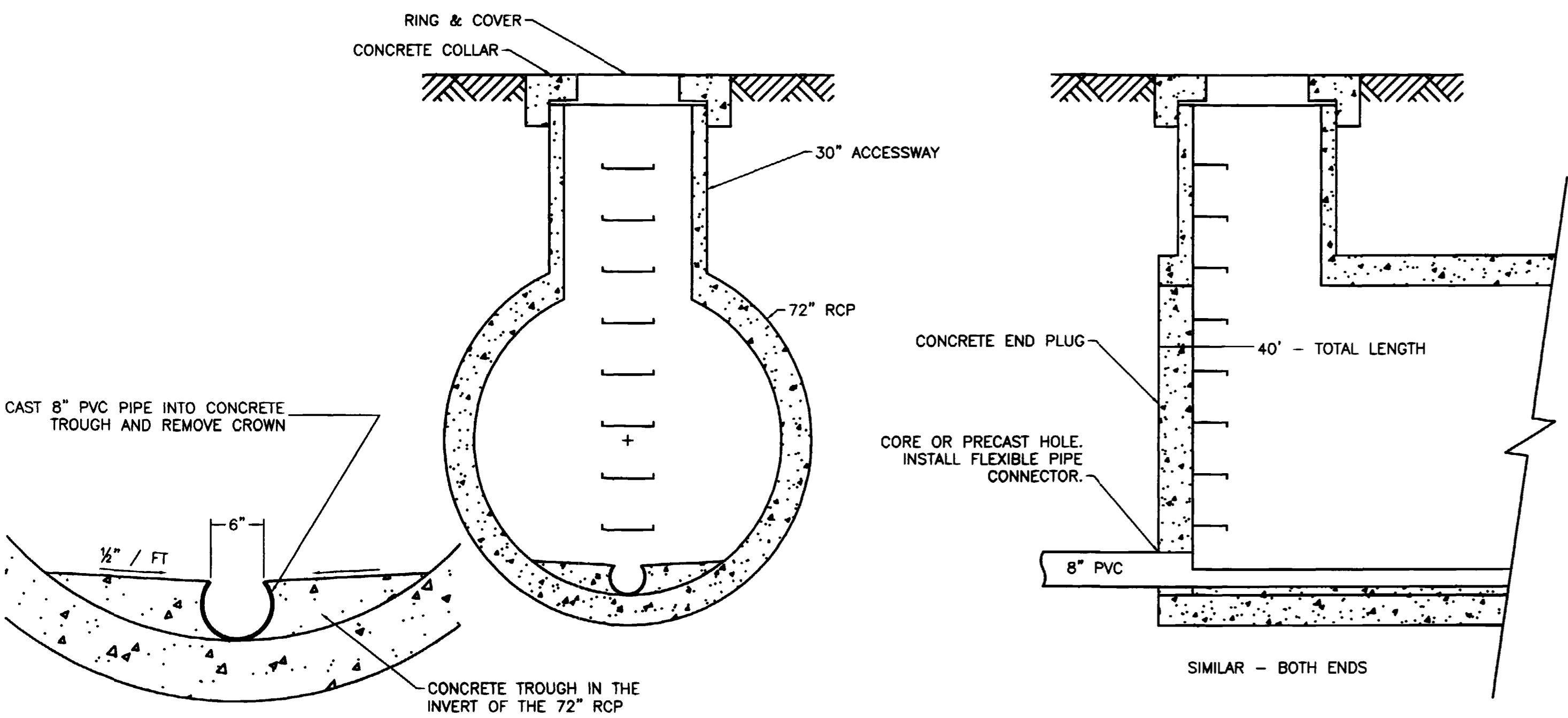
SHEET 3
FILENAME 03.DWG

COFFER DAM (208.30)



AFTER CONSTRUCTION IS COMPLETE, REMOVE, HAUL, AND DISPOSE OF ANY SEDIMENT BUILD-UP, AND REMOVE THE IMPERMEABLE MEMBRANE. THE WASHED ROCK SHALL BE REMOVED OR KNOCKED DOWN AND/OR PRESSED INTO THE CHANNEL SIDES AND BOTTOM TO OPEN UP DRAINAGEWAY.

IN-LINE STORAGE VAULT (64.2)

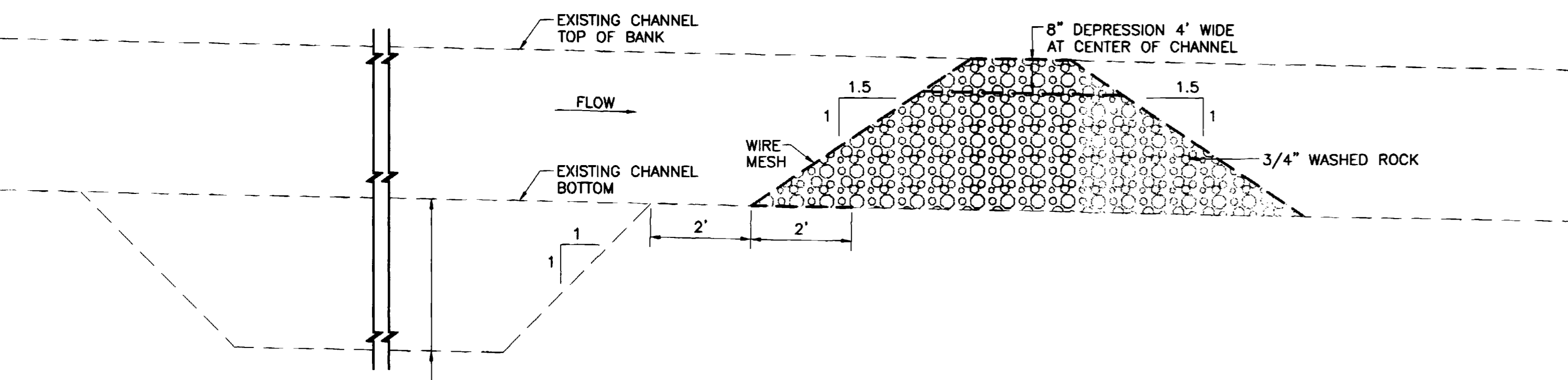


CAST 8" PVC PIPE INTO CONCRETE TROUGH AND REMOVE CROWN

CONCRETE TROUGH IN THE INVERT OF THE 72" RCP

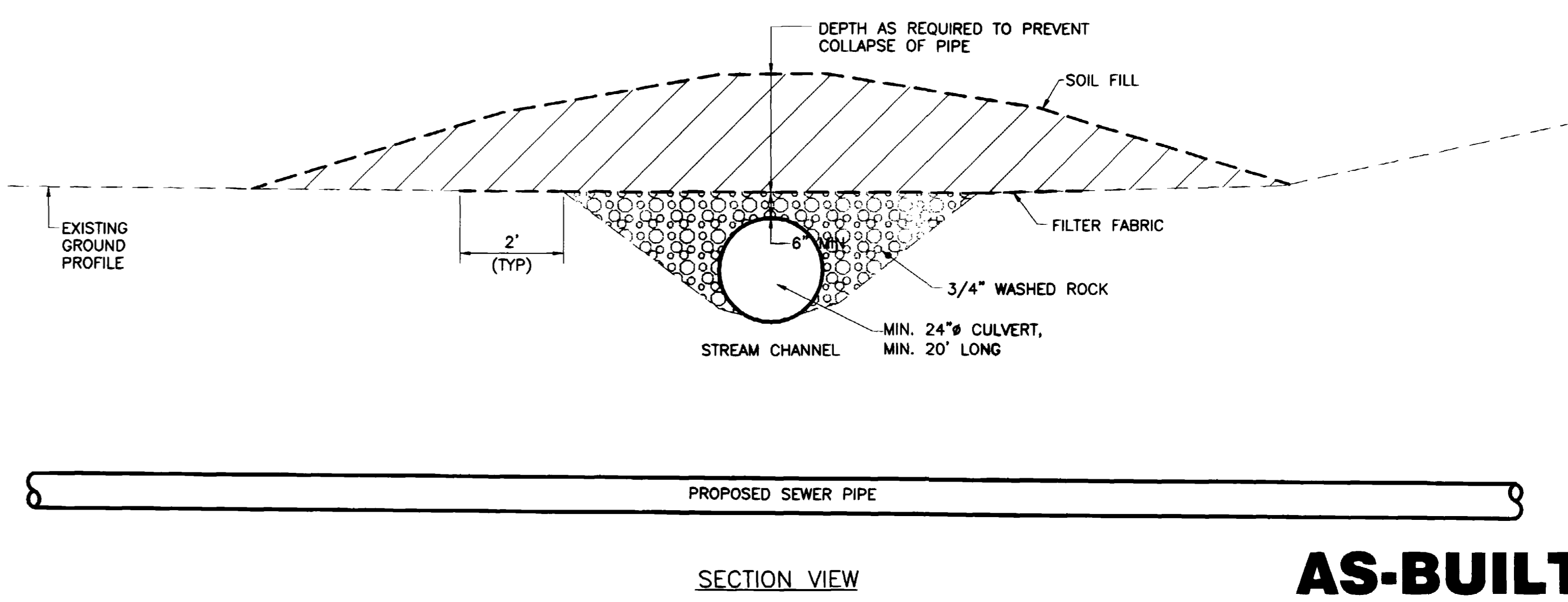
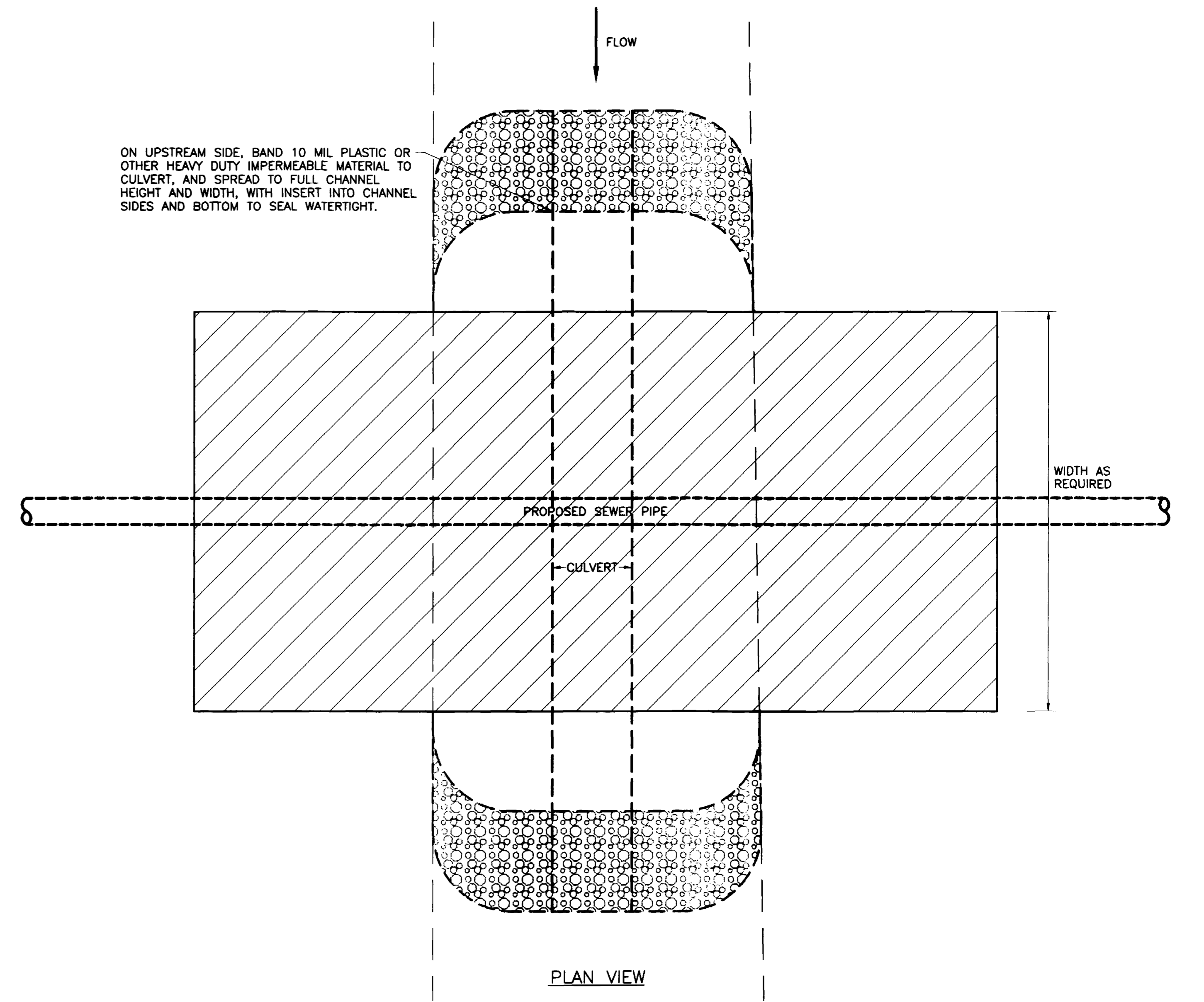
SIMILAR - BOTH ENDS

TEMPORARY SEDIMENT TRAP (208.15)



3' MAX DEPTH OVEREXCAVATION OF CHANNEL BOTTOM FOR SEDIMENT STORAGE. IF, DURING THE COURSE OF CONSTRUCTION, SEDIMENT BUILD-UP RISES WITHIN 2 FEET OF THE CHANNEL TOP OF BANK, THEN SEDIMENT MUST BE REMOVED, HAULED OFF, AND DISPOSED OF. AFTER ALL CONSTRUCTION IS COMPLETE, SEDIMENT SHALL BE REMOVED IF ABOVE THE EXISTING CHANNEL BOTTOM. THE WIRE MESH SHALL BE REMOVED, AND WASHED ROCK REMOVED OR KNOCKED DOWN AND/OR PRESSED INTO THE CHANNEL SIDES AND BOTTOM TO OPEN UP DRAINAGEWAY.

WATERWAY CROSSING (208.29)



DESCRIPTION	DATE	SCALE	PLAN	DETAILS	SECTIONS
REVISION CITY OF GRAND JUNCTION MODIFICATIONS	12/04	HORIZONTAL		NTS	
REVISION ADDENDUM NO.1	1/14/05				
REVISION ASBUILT DRAWINGS	8/2005	VERTICAL			

GR WILLIAMS ENGINEERING, INC
 1231 19 ROAD, FRUITA, COLORADO 81521-9689
 (970) 858-1014 PHONE (970) 858-1007 FAX

REDLANDS VILLAGE NORTHWEST S.I.D.
 MISCELLANEOUS DETAILS: Bollard, Coffe
 Dam, Sediment Trap, & Waterway X'ing

4
 FILENAME
 04.DWG

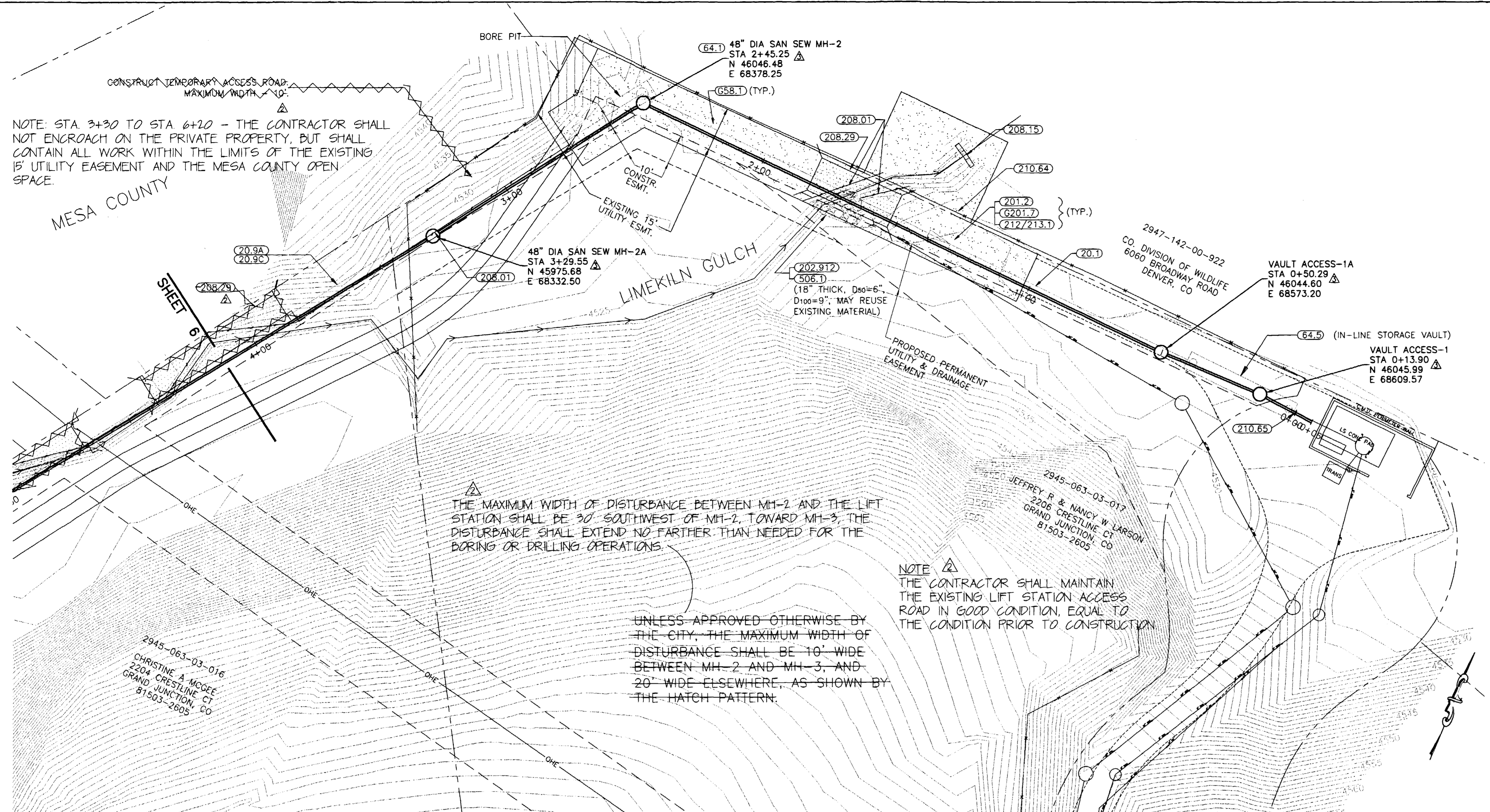
AS-BUILT

SHADING AND TEXTURE LEGEND

FACILITY OR SURFACE TREATMENT	EXISTING	PROPOSED	REMOVE & REPLACE
AGGREGATE GRAVEL (CLASS 6)			
BUILDING			
LIMITS OF DISTURBANCE			
RIPRAP			
WASHED ROCK			

CONSTRUCTION NOTES

- 20.1 CONSTRUCT 8" SDR 35 PVC SANITARY SEWER.
- 20.9A - INSTALL SEWER PIPE BY BORING AND JACKING OR DIRECTIONAL DRILLING PER SPECIAL PROVISIONS.
- 20.9C CARRIER/CASING SEWER PIPE FOR BORE SHALL BE CERTAINTED CERTA-LOC YELOMINE (OR APPROVED EQUAL) RESTRAINED JOINT PVC PIPE (CLASS-250, SDR-17) OR HIGH-DENSITY POLYETHYLENE (SDR-11)
- 058.1 CONSTRUCT CUT-OFF WALL PER STANDARD SPECIFICATIONS.
- 64.1 CONSTRUCT STANDARD 4' DIA. MH.
- 64.5 CONSTRUCT SANITARY SEWER STRUCTURE (SPECIAL)
- 201.2 CLEAR, GRUB, REMOVE, AND DISPOSE OF ALL TREES, VEGETATION, AND/OR DEBRIS AS REQUIRED FOR CONSTRUCTION.
- G201.7 CLEAN CUT AND DISPOSE OF DAMAGED ROOTS THAT ARE 3" OR LARGER AND PROVIDE MOISTURE PROTECTION PER SPECIAL PROVISIONS.
- 202.912 REMOVE RIPRAP AND FABRIC LINER AS REQUIRED FOR CONSTRUCTION.
- 208.01 INSTALL SILT FENCE OR EROSION LOG ALONG THE DOWNHILL SIDE OF DISTURBED AREAS WHERE THE GROUND SLOPE EXCEEDS 10% FOR BOTH CONSTRUCTION AND POST-CONSTRUCTION CONDITIONS, AND ALONG THE TOE OF THE SLOPE ADJACENT TO THE CREEK WHEN THE CROSSINGS HAVE BEEN REMOVED.
- 208.15 SEDIMENT TRAP REQUIRED.
- 208.29 WATERWAY CROSSING REQUIRED.
- 210.64 REMOVE AND RESET FENCE AS REQUIRED FOR CONSTRUCTION.
- 210.65 CONNECT TO EXISTING PIPE
- 212/213.1 SEED AND MULCH PER SPECIAL PROVISIONS ALL NON-WETLAND SURFACE AREAS DISTURBED BY CONSTRUCTION THAT WILL NOT BE HARD SURFACED OR GRAVELED.
- 506.1 CONSTRUCT LOOSE RIPRAP LINER REPLACEMENT TO MATCH EXISTING. REPLACE FABRIC LINER IF DAMAGED DURING REMOVAL.

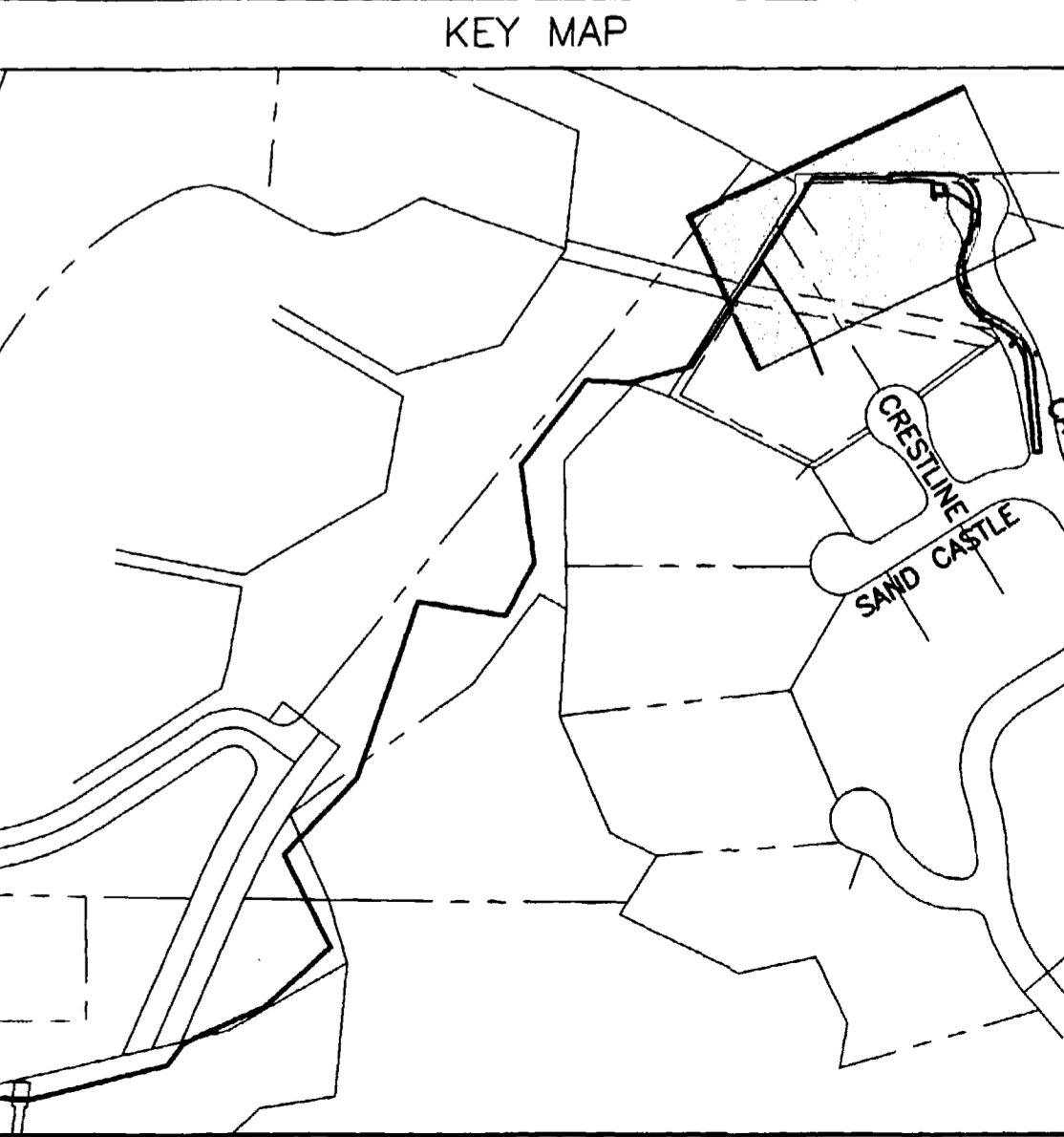
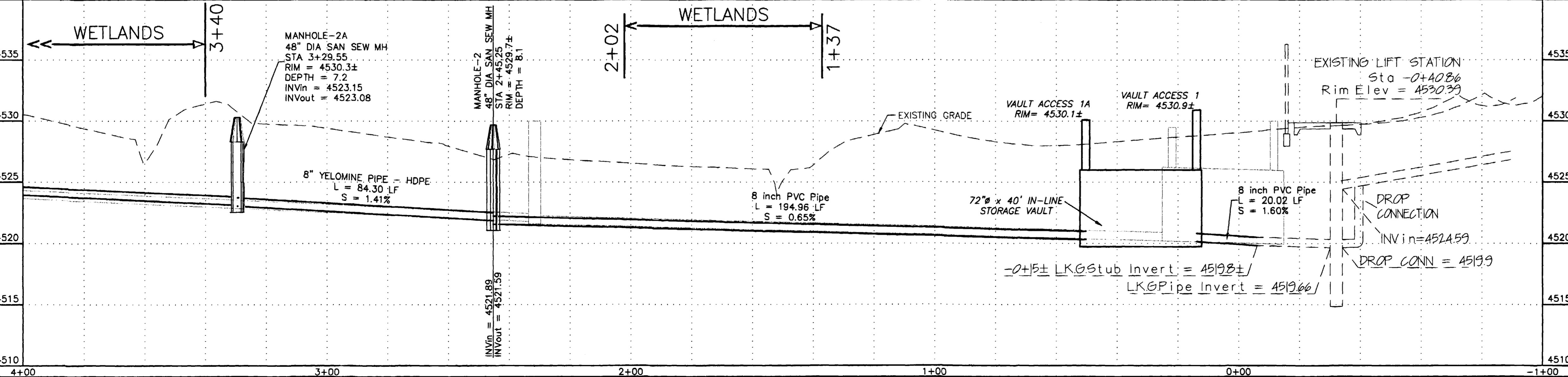


THE MAXIMUM WIDTH OF DISTURBANCE BETWEEN MH-2 AND THE LIFT STATION SHALL BE 30' SW OF MH-2, TOWARD MH-3, THE DISTURBANCE SHALL EXTEND NO FARTHER THAN NEEDED FOR THE BORING OR DRILLING OPERATIONS.

NOTE THE CONTRACTOR SHALL MAINTAIN THE EXISTING LIFT STATION ACCESS ROAD IN GOOD CONDITION, EQUAL TO THE CONDITION PRIOR TO CONSTRUCTION

UNLESS APPROVED OTHERWISE BY THE CITY, THE MAXIMUM WIDTH OF DISTURBANCE SHALL BE 10' WIDE BETWEEN MH-2 AND MH-3, AND 20' WIDE ELSEWHERE, AS SHOWN BY THE HATCH PATTERN.

AS-BUILT



REVISION	DESCRIPTION	DATE
REVISION	CITY OF GRAND JUNCTION MODIFICATIONS	12/04
REVISION	ADDENDUM NO.1	1/14/05
REVISION	ASBUILT DRAWINGS	10/01/05

SCALE	PLAN	PROFILE	SECTIONS
HORIZONTAL	0 10 20 40	0 10 20 40	
VERTICAL		0 2.5 5 10	

GR WILLIAMS ENGINEERING, INC.
 1231 19 ROAD, FRUITA, COLORADO 81521-9689
 (970) 858-1014 PHONE (970) 858-1007 FAX

LIMEKILN GULCH INTERCEPTOR
 Sta 0+00 to 4+00

5
 FILENAME
 05.DWG

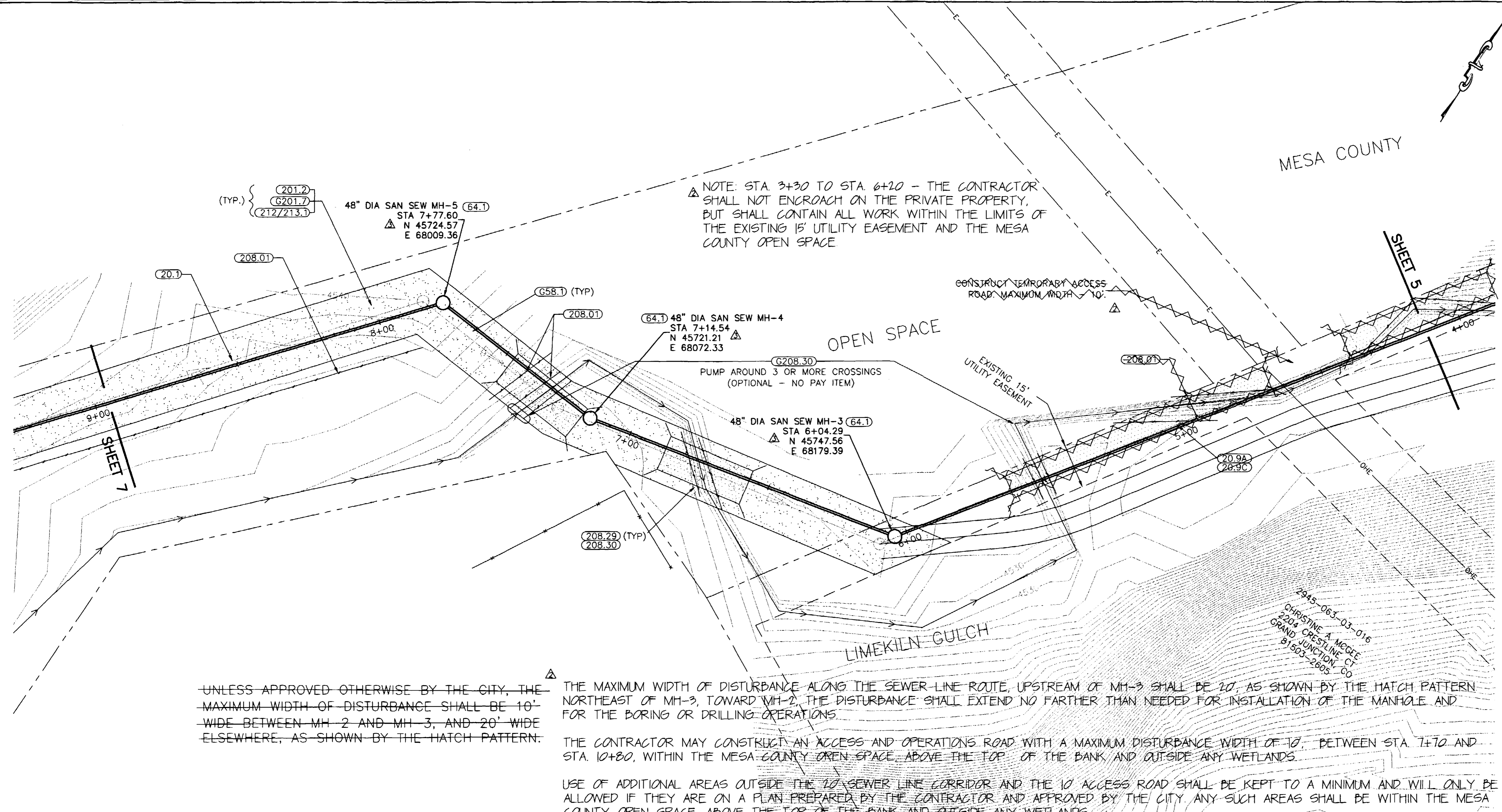
SHADING AND TEXTURE LEGEND

FACILITY OR SURFACE TREATMENT	EXISTING	PROPOSED	REMOVE & REPLACE
AGGREGATE GRAVEL (CLASS 6)			
BUILDING			
LIMITS OF DISTURBANCE			
RIPRAP			
WASHED ROCK			

CONSTRUCTION NOTES

- 20.1 CONSTRUCT 8" SDR 35 PVC SANITARY SEWER.
- 20.9A - INSTALL SEWER PIPE BY BORING AND JACKING OR DIRECTIONAL DRILLING PER SPECIAL PROVISIONS.
- 20.9C CARRIER/CASING SEWER PIPE FOR BORE SHALL BE CERTAINTED CERTA-LOC YELOMINE (OR APPROVED EQUAL) RESTRAINED JOINT PVC PIPE (CLASS-250, SDR-17) OR HIGH-DENSITY POLYETHYLENE (SDR-11)
- 24.0 CONSTRUCT SANITARY SEWER TAP, SERVICE, AND PLUG, 4" UNLESS NOTED OTHERWISE. LOCATE PER STATIONING SHOWN.
- G58.1 CONSTRUCT CUT-OFF WALL PER STANDARD SPECIFICATIONS.
- 64.1 CONSTRUCT STANDARD 4' DIA. MH.
- 201.2 CLEAR, GRUB, REMOVE, AND DISPOSE OF ALL TREES, VEGETATION, AND/OR DEBRIS AS REQUIRED FOR CONSTRUCTION.
- G201.7 CLEAN CUT AND DISPOSE OF DAMAGED ROOTS THAT ARE 3" OR LARGER AND PROVIDE MOISTURE PROTECTION PER SPECIAL PROVISIONS.
- 208.01 INSTALL SILT FENCE OR EROSION LOG ALONG THE DOWNHILL SIDE OF DISTURBED AREAS WHERE THE GROUND SLOPE EXCEEDS 10% FOR BOTH CONSTRUCTION AND POST-CONSTRUCTION CONDITIONS, AND ALONG THE TOE OF THE SLOPE ADJACENT TO THE CREEK WHEN THE CROSSINGS HAVE BEEN REMOVED.
- 208.29 WATERWAY CROSSING REQUIRED.
- G208.30 CONSTRUCT TEMPORARY COFFER DAM AND CONVEY STREAMFLOW DOWNSTREAM BELOW IN-STREAM WORK PER SPECIAL PROVISIONS AND DETAIL. REMOVE COFFER DAM AT PROJECT COMPLETION. (OPTIONAL - NO PAY ITEM)
- 212/213.1 SEED AND MULCH PER SPECIAL PROVISIONS ALL NON-WETLAND SURFACE AREAS DISTURBED BY CONSTRUCTION THAT WILL NOT BE HARD SURFACED OR GRAVELED.

AS-BUILT

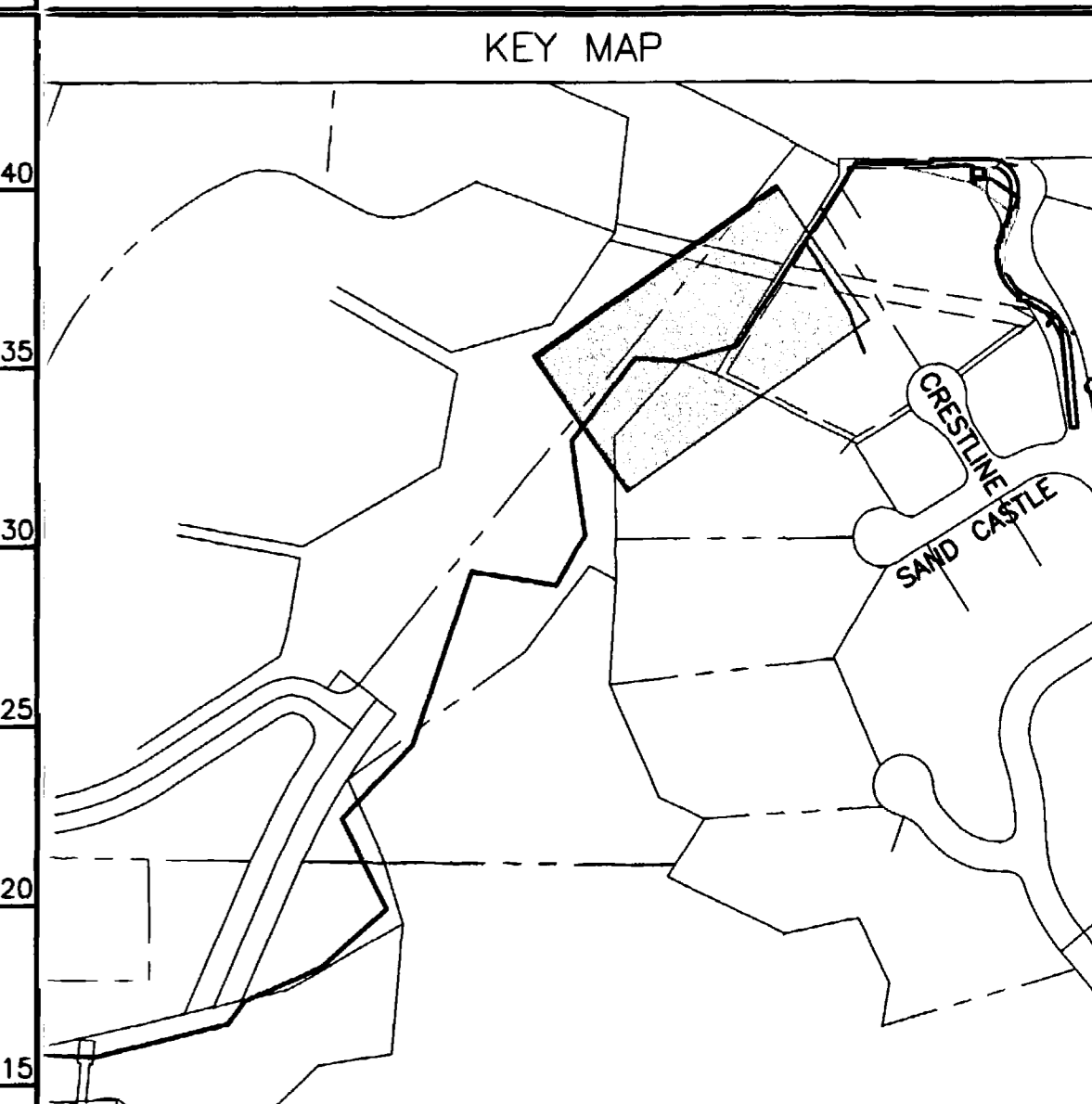
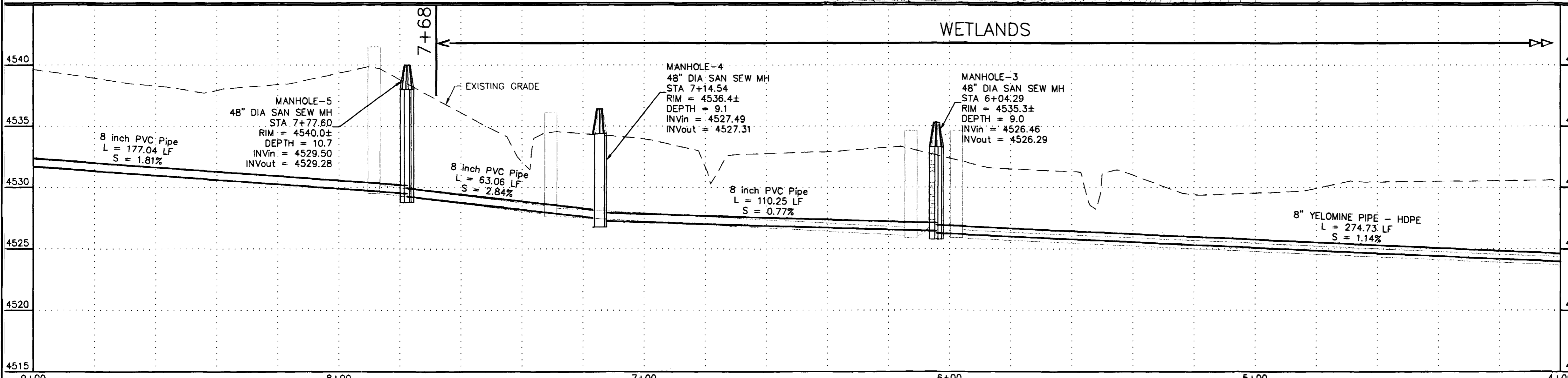


UNLESS APPROVED OTHERWISE BY THE CITY, THE MAXIMUM WIDTH OF DISTURBANCE SHALL BE 10' WIDE BETWEEN MH-2 AND MH-3, AND 20' WIDE ELSEWHERE, AS SHOWN BY THE HATCH PATTERN.

THE MAXIMUM WIDTH OF DISTURBANCE ALONG THE SEWER LINE ROUTE, UPSTREAM OF MH-3 SHALL BE 20', AS SHOWN BY THE HATCH PATTERN NORTHEAST OF MH-3, TOWARD MH-2. THE DISTURBANCE SHALL EXTEND NO FARTHER THAN NEEDED FOR INSTALLATION OF THE MANHOLE AND FOR THE BORING OR DRILLING OPERATIONS.

THE CONTRACTOR MAY CONSTRUCT AN ACCESS AND OPERATIONS ROAD WITH A MAXIMUM DISTURBANCE WIDTH OF 10' BETWEEN STA. 7+70 AND STA. 10+80, WITHIN THE MESA COUNTY OPEN SPACE, ABOVE THE TOP OF THE BANK AND OUTSIDE ANY WETLANDS.

USE OF ADDITIONAL AREAS OUTSIDE THE 20' SEWER LINE CORRIDOR AND THE 10' ACCESS ROAD SHALL BE KEPT TO A MINIMUM AND WILL ONLY BE ALLOWED IF THEY ARE ON A PLAN PREPARED BY THE CONTRACTOR AND APPROVED BY THE CITY. ANY SUCH AREAS SHALL BE WITHIN THE MESA COUNTY OPEN SPACE, ABOVE THE TOP OF THE BANK AND OUTSIDE ANY WETLANDS.



REVISION	DESCRIPTION	DATE
1	CITY OF GRAND JUNCTION MODIFICATIONS	12/04
2	ADDENDUM NO.1	1/14/05
3	AS-BUILT DRAWINGS	10/01/05

SCALE	PLAN	PROFILE	SECTIONS
HORIZONTAL			
VERTICAL			

GR WILLIAMS ENGINEERING, INC.
 1231 19 ROAD, FRUITA, COLORADO 81521-9689
 (970) 858-1014 PHONE (970) 858-1007 FAX

LIMEKILN GULCH INTERCEPTOR Sta 4+00 to 9+00		6
FILENAME 06DWG		

△ THE CONTRACTOR MAY CONSTRUCT AN ACCESS AND OPERATIONS ROAD WITH A MAXIMUM DISTURBANCE WIDTH OF 10', BETWEEN STA. 7+70 AND STA. 10+80 AND BETWEEN STA. 11+80 AND STA. 16+00 (GOING AROUND THE WETLANDS BETWEEN STA. 13+29 AND STA. 14+89), WITHIN THE MESA COUNTY OPEN SPACE, ABOVE THE TOP OF THE BANK AND OUTSIDE ANY WETLANDS.

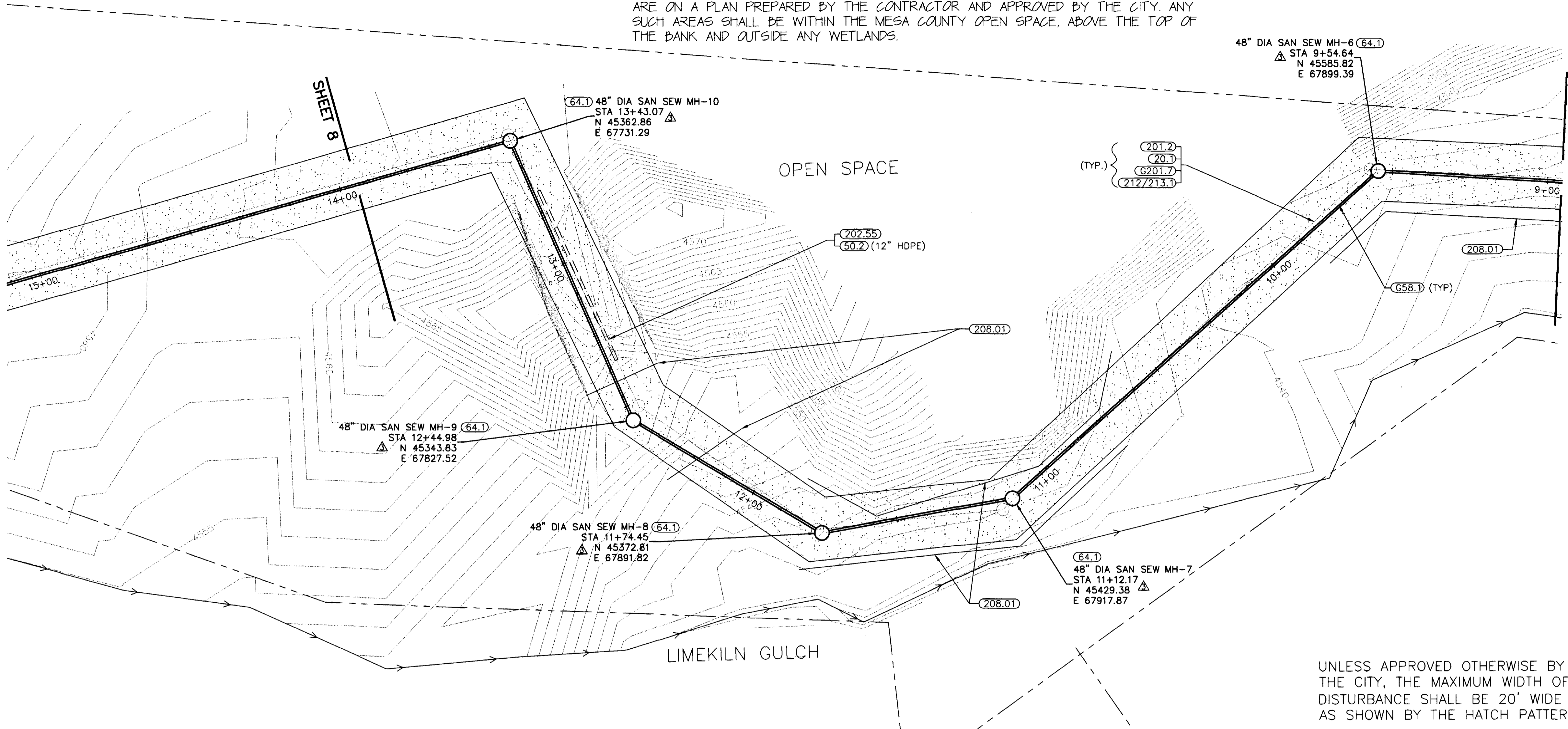
USE OF ADDITIONAL AREAS OUTSIDE THE 20' SEWER LINE CORRIDOR AND THE 10' ACCESS ROAD SHALL BE KEPT TO A MINIMUM AND WILL ONLY BE ALLOWED IF THEY ARE ON A PLAN PREPARED BY THE CONTRACTOR AND APPROVED BY THE CITY. ANY SUCH AREAS SHALL BE WITHIN THE MESA COUNTY OPEN SPACE, ABOVE THE TOP OF THE BANK AND OUTSIDE ANY WETLANDS.

SHADING AND TEXTURE LEGEND

FACILITY OR SURFACE TREATMENT	EXISTING	PROPOSED	REMOVE & REPLACE
AGGREGATE GRAVEL (CLASS 6)			
BUILDING			
LIMITS OF DISTURBANCE			
RIPRAP			
WASHED ROCK			

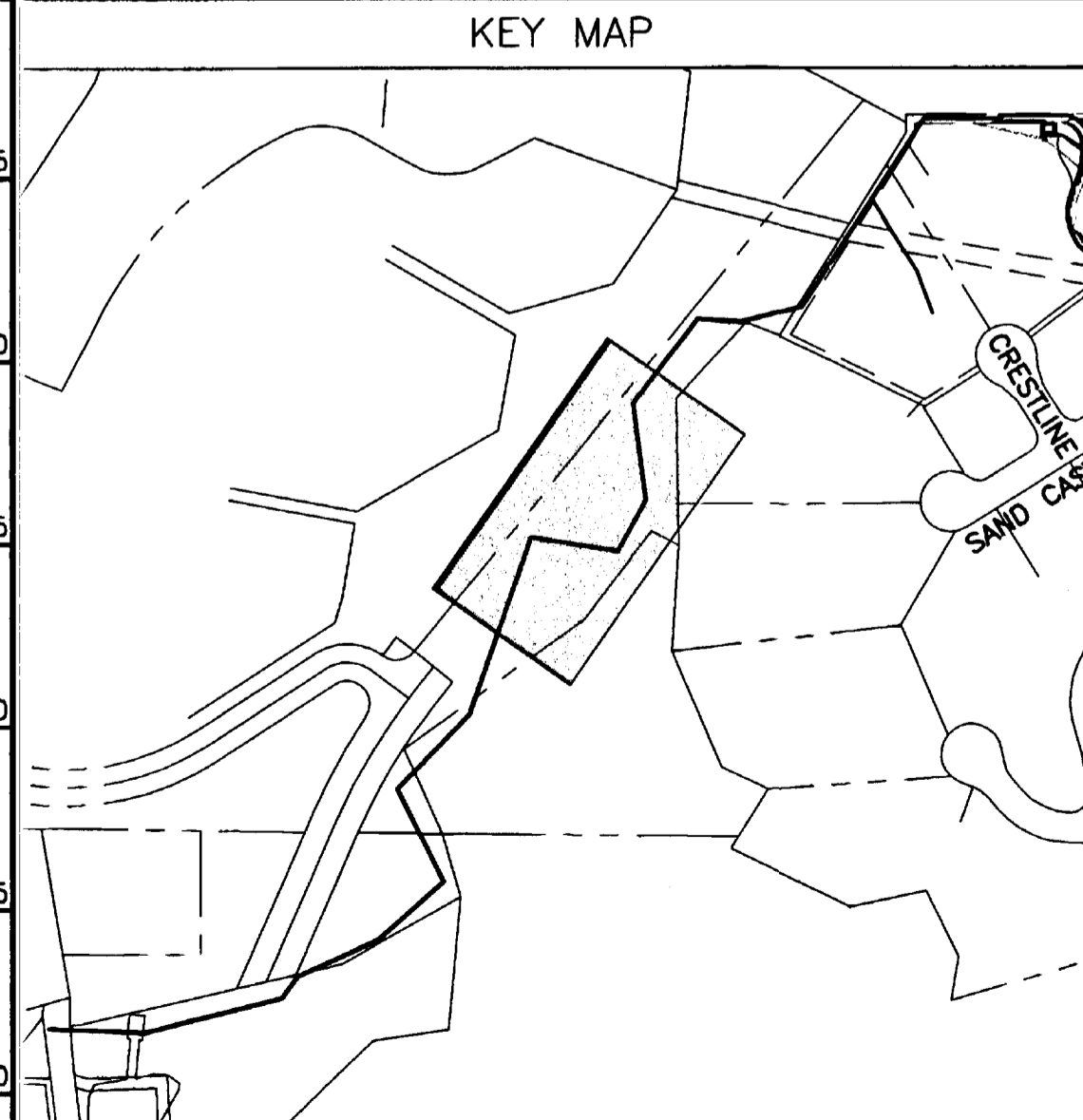
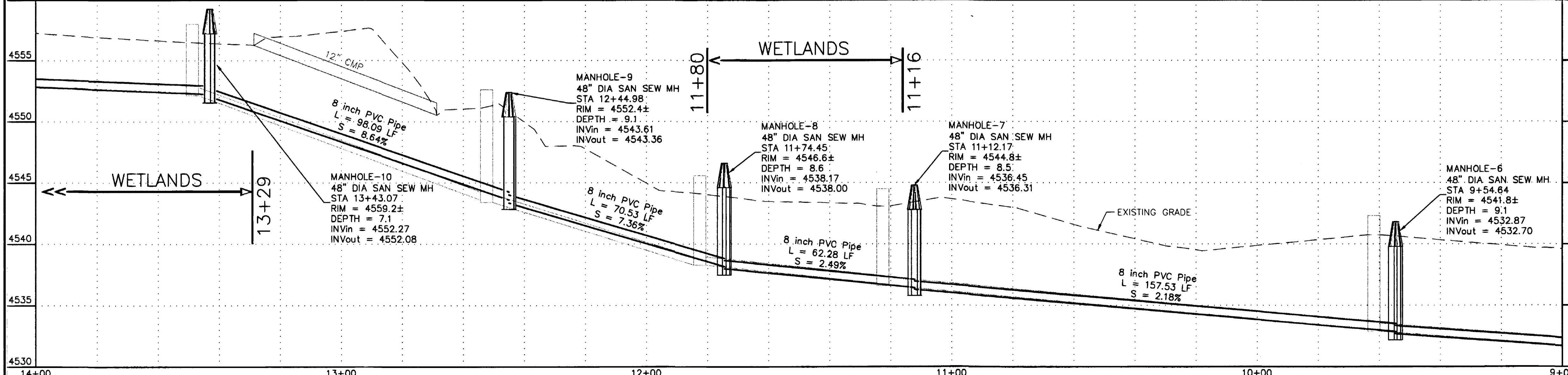
CONSTRUCTION NOTES

- 20.1 CONSTRUCT 8" SDR 35 PVC SANITARY SEWER.
- 50.2 REPLACE CULVERT.
- G58.1 CONSTRUCT CUT-OFF WALL PER STANDARD SPECIFICATIONS.
- 64.1 CONSTRUCT STANDARD 4' DIA. MH.
- 201.2 CLEAR, GRUB, REMOVE, AND DISPOSE OF ALL TREES, VEGETATION, AND/OR DEBRIS AS REQUIRED FOR CONSTRUCTION.
- G201.7 CLEAN UP AND DISPOSE OF DAMAGED PERKS THAT ARE 3" OR LARGER AND PROVIDE MOISTURE PROTECTION FOR SPECIAL PROVISIONS.
- 202.55 REMOVE CULVERT.
- 208.01 INSTALL SILT FENCE OR EROSION LOG ALONG THE DOWNHILL SIDE OF DISTURBED AREAS WHERE THE GROUND SLOPE EXCEEDS 10% FOR BOTH CONSTRUCTION AND POST-CONSTRUCTION CONDITIONS, AND ALONG THE TOE OF THE SLOPE ADJACENT TO THE CREEK WHEN THE CROSSINGS HAVE BEEN REMOVED.
- 212/213.1 SEED AND MULCH PER SPECIAL PROVISIONS ALL NON-WETLAND SURFACE AREAS DISTURBED BY CONSTRUCTION THAT WILL NOT BE HARD SURFACED OR GRAVELED.



UNLESS APPROVED OTHERWISE BY THE CITY, THE MAXIMUM WIDTH OF DISTURBANCE SHALL BE 20' WIDE AS SHOWN BY THE HATCH PATTERN.

AS-BUILT



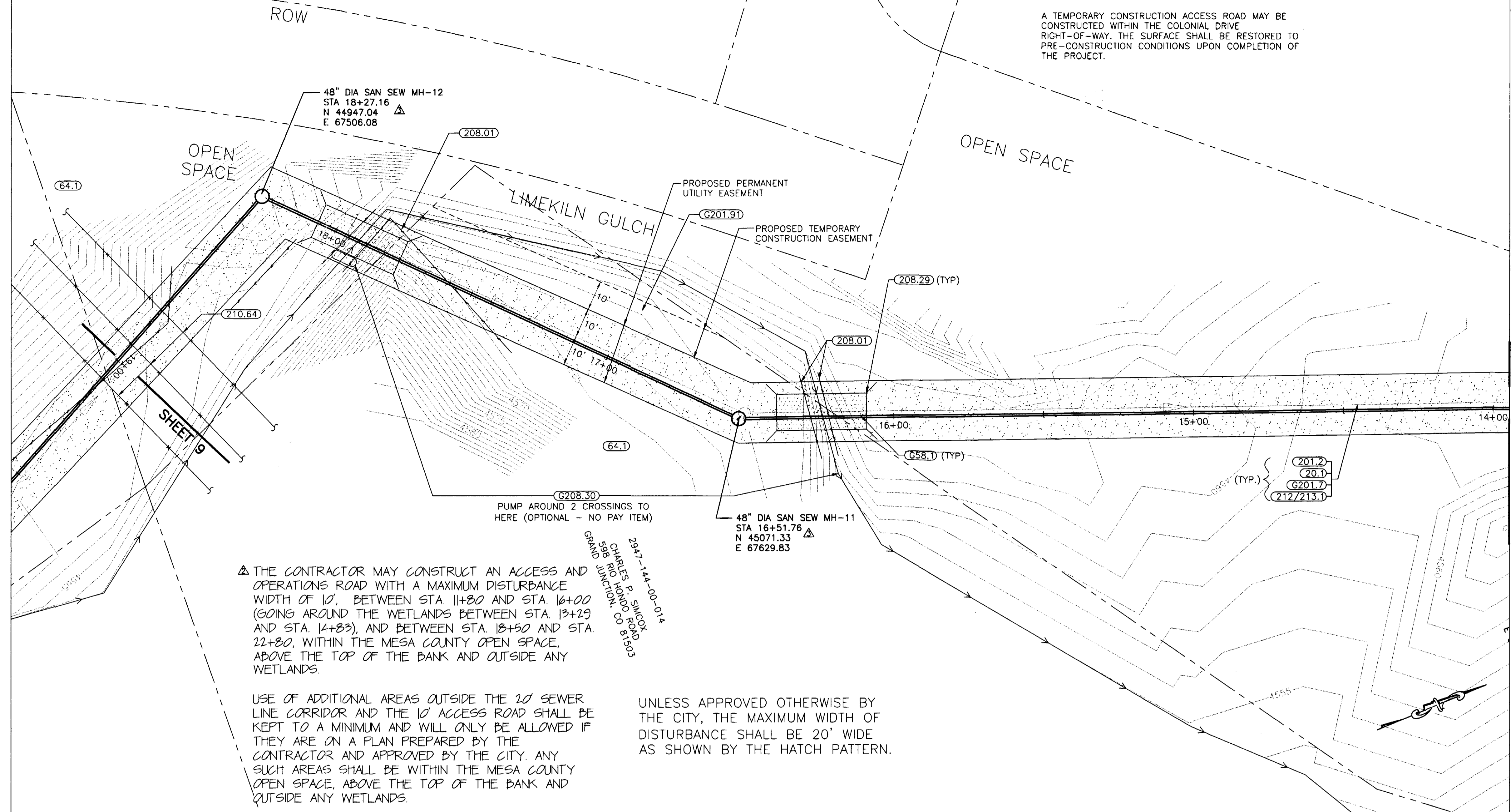
REVISION	DESCRIPTION	DATE
△	CITY OF GRAND JUNCTION MODIFICATIONS	12/04
△	ADDENDUM NO.1	1/14/05
△	ASBUILT DRAWINGS	10/01/05

SCALE	PLAN	PROFILE	SECTIONS
HORIZONTAL	0 10 20 40	0 10 20 40	
VERTICAL		0 2.5 5 10	

GR WILLIAMS ENGINEERING, INC.
 1231 19 ROAD, FRUITA, COLORADO 81521-9689
 (970) 858-1014 PHONE (970) 858-1007 FAX

LIMEKILN GULCH INTERCEPTOR
 Sta 9+00 to 14+00

7
 FILENAME
 07.DWG



SHADING AND TEXTURE LEGEND

FACILITY OR SURFACE TREATMENT	EXISTING	PROPOSED	REMOVE & REPLACE
AGGREGATE GRAVEL (CLASS 6)			
BUILDING			
LIMITS OF DISTURBANCE			
RIPRAP			
WASHED ROCK			

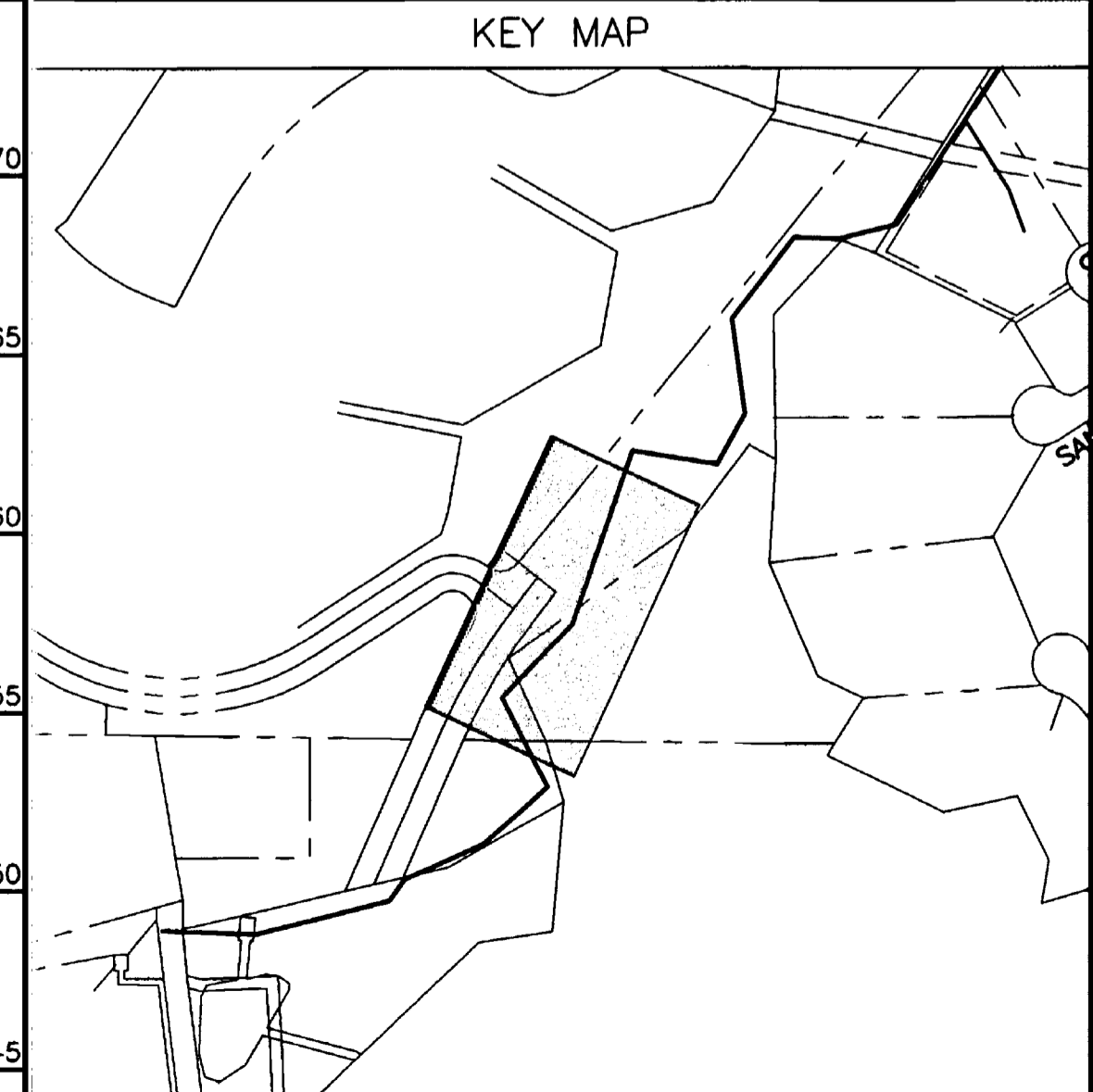
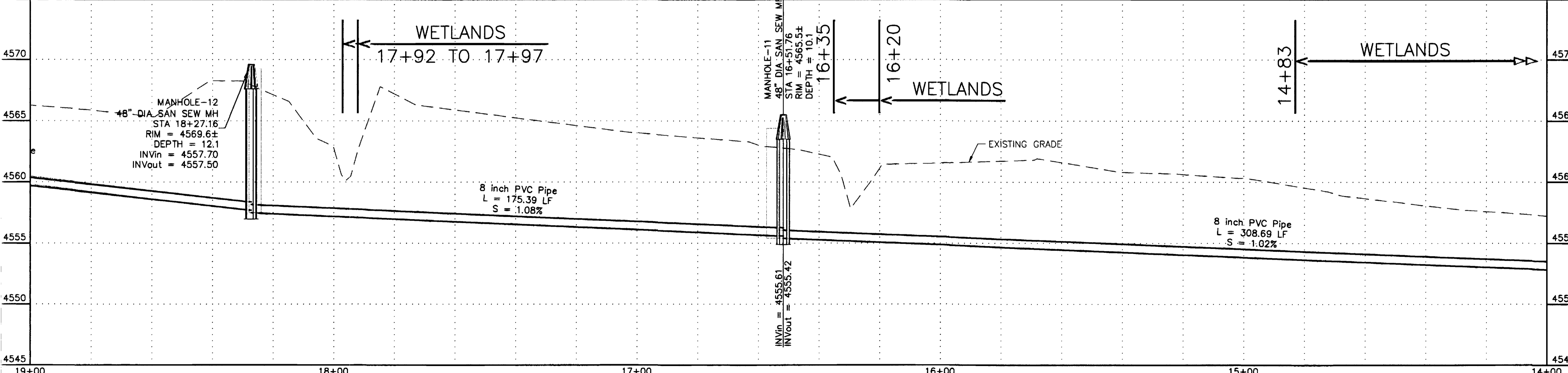
- CONSTRUCTION NOTES**
- 20.1 CONSTRUCT 8" SDR 35 PVC SANITARY SEWER.
 - G58.1 CONSTRUCT CUT-OFF WALL PER STANDARD SPECIFICATIONS.
 - 64.1 CONSTRUCT STANDARD 4' DIA. MH.
 - 201.2 CLEAR, GRUB, REMOVE, AND DISPOSE OF ALL TREES, VEGETATION, AND/OR DEBRIS AS REQUIRED FOR CONSTRUCTION.
 - G201.7 CLEAN CUT AND DISPOSE OF DAMAGED ROOTS THAT ARE 3" OR LARGER AND PROVIDE MOISTURE PROTECTION PER SPECIAL PROVISIONS.
 - G201.91 PROTECT AND SAVE TREE.
 - 208.01 INSTALL SILT FENCE OR EROSION LOG ALONG THE DOWNHILL SIDE OF DISTURBED AREAS WHERE THE GROUND SLOPE EXCEEDS 10% FOR BOTH CONSTRUCTION AND POST-CONSTRUCTION CONDITIONS, AND ALONG THE TOE OF THE SLOPE ADJACENT TO THE CREEK WHEN THE CROSSINGS HAVE BEEN REMOVED.
 - 208.29 WATERWAY CROSSING REQUIRED.
 - G208.30 CONSTRUCT TEMPORARY COFFER DAM AND CONVEY STREAMFLOW DOWNSTREAM BELOW IN-STREAM WORK PER SPECIAL PROVISIONS AND DETAIL. REMOVE COFFER DAM AT PROJECT COMPLETION. (OPTIONAL - NO PAY ITEM)
 - 210.64 REMOVE AND RESET FENCE AS REQUIRED FOR CONSTRUCTION.
 - 212/213.1 SEED AND MULCH PER SPECIAL PROVISIONS ALL NON-WETLAND SURFACE AREAS DISTURBED BY CONSTRUCTION THAT WILL NOT BE HARD SURFACED OR GRAVELED.

△ THE CONTRACTOR MAY CONSTRUCT AN ACCESS AND OPERATIONS ROAD WITH A MAXIMUM DISTURBANCE WIDTH OF 10' BETWEEN STA. 11+80 AND STA. 16+00 (GOING AROUND THE WETLANDS BETWEEN STA. 13+29 AND STA. 14+83), AND BETWEEN STA. 13+50 AND STA. 22+80, WITHIN THE MESA COUNTY OPEN SPACE, ABOVE THE TOP OF THE BANK AND OUTSIDE ANY WETLANDS.

USE OF ADDITIONAL AREAS OUTSIDE THE 20' SEWER LINE CORRIDOR AND THE 10' ACCESS ROAD SHALL BE KEPT TO A MINIMUM AND WILL ONLY BE ALLOWED IF THEY ARE ON A PLAN PREPARED BY THE CONTRACTOR AND APPROVED BY THE CITY. ANY SUCH AREAS SHALL BE WITHIN THE MESA COUNTY OPEN SPACE, ABOVE THE TOP OF THE BANK AND OUTSIDE ANY WETLANDS.

UNLESS APPROVED OTHERWISE BY THE CITY, THE MAXIMUM WIDTH OF DISTURBANCE SHALL BE 20' WIDE AS SHOWN BY THE HATCH PATTERN.

AS-BUILT



REVISION	DESCRIPTION	DATE
1	CITY OF GRAND JUNCTION MODIFICATIONS	12/04
2	ADDENDUM NO.1	1/14/05
3	AS-BUILT DRAWINGS	10/01/05

SCALE	PLAN	PROFILE	SECTIONS
HORIZONTAL	0 10 20 40	0 10 20 40	
VERTICAL		0 2.5 5 10	

GR WILLIAMS ENGINEERING, INC.
 1231 19 ROAD, FRUITA, COLORADO 81521-9689
 (970) 858-1014 PHONE (970) 858-1007 FAX

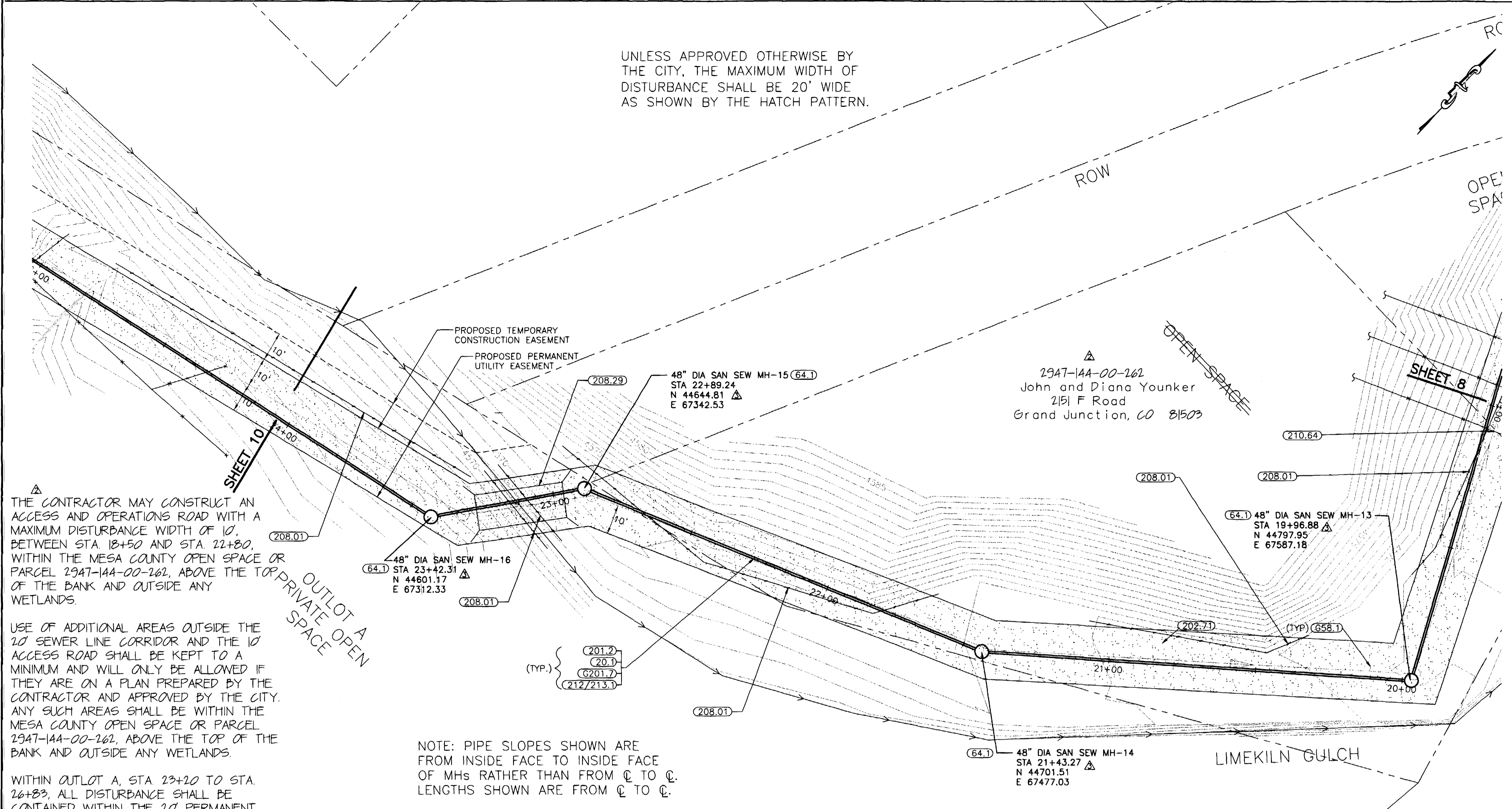
LIMEKILN GULCH INTERCEPTOR
 Sta. 14+00 to 19+00

8
 FILENAME
 08.DWG

UNLESS APPROVED OTHERWISE BY THE CITY, THE MAXIMUM WIDTH OF DISTURBANCE SHALL BE 20' WIDE AS SHOWN BY THE HATCH PATTERN.

SHADING AND TEXTURE LEGEND			
FACILITY OR SURFACE TREATMENT	EXISTING	PROPOSED	REMOVE & REPLACE
AGGREGATE GRAVEL (CLASS 6)	[Hatch Pattern]	[Hatch Pattern]	[Hatch Pattern]
BUILDING	[Hatch Pattern]	[Hatch Pattern]	[Hatch Pattern]
LIMITS OF DISTURBANCE	[Hatch Pattern]	[Hatch Pattern]	[Hatch Pattern]
RIPRAP	[Hatch Pattern]	[Hatch Pattern]	[Hatch Pattern]
WASHED ROCK	[Hatch Pattern]	[Hatch Pattern]	[Hatch Pattern]

CONSTRUCTION NOTES	
20.1	CONSTRUCT 8" SDR 35 PVC SANITARY SEWER.
G58.1	CONSTRUCT CUT-OFF WALL PER STANDARD SPECIFICATIONS.
64.1	CONSTRUCT STANDARD 4' DIA. MH.
201.2	CLEAR, GRUB, REMOVE, AND DISPOSE OF ALL TREES, VEGETATION, AND/OR DEBRIS AS REQUIRED FOR CONSTRUCTION.
G201.7	CLEAN CUT AND DISPOSE OF DAMAGED ROOTS THAT ARE 3" OR LARGER AND PROVIDE MOISTURE PROTECTION PER SPECIAL PROVISIONS.
202.71	REMOVE TREE.
208.01	INSTALL SILT FENCE OR EROSION LOG ALONG THE DOWNHILL SIDE OF DISTURBED AREAS WHERE THE GROUND SLOPE EXCEEDS 10% FOR BOTH CONSTRUCTION AND POST-CONSTRUCTION CONDITIONS, AND ALONG THE TOE OF THE SLOPE ADJACENT TO THE CREEK WHEN THE CROSSINGS HAVE BEEN REMOVED.
208.29	WATERWAY CROSSING REQUIRED.
210.64	REMOVE AND RESET FENCE AS REQUIRED FOR CONSTRUCTION.
212/213.1	SEED AND MULCH PER SPECIAL PROVISIONS ALL NON-WETLAND SURFACE AREAS DISTURBED BY CONSTRUCTION THAT WILL NOT BE HARD SURFACED OR GRAVELED.

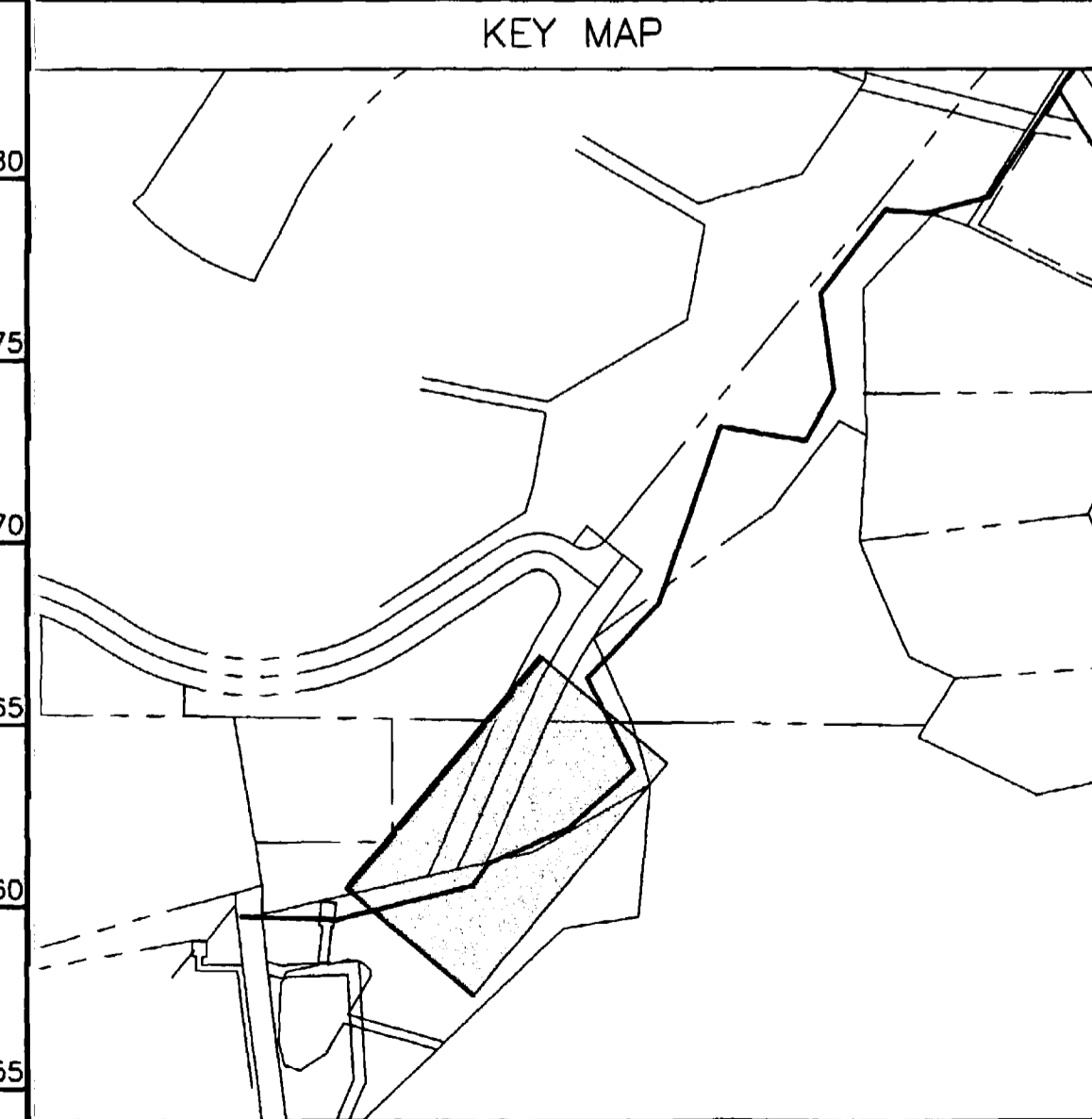
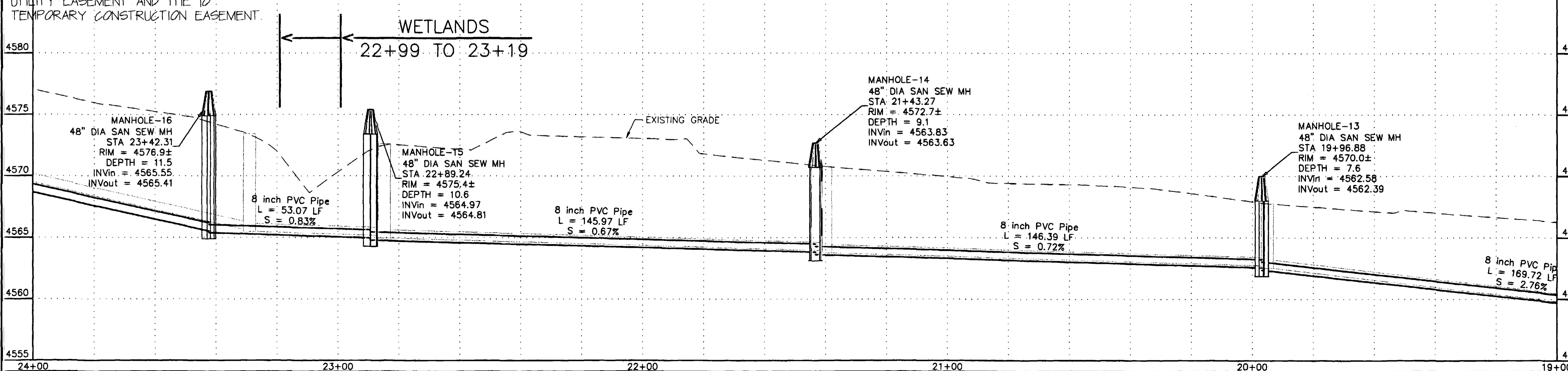


THE CONTRACTOR MAY CONSTRUCT AN ACCESS AND OPERATIONS ROAD WITH A MAXIMUM DISTURBANCE WIDTH OF 10', BETWEEN STA. 18+50 AND STA. 22+80, WITHIN THE MESA COUNTY OPEN SPACE OR PARCEL 2947-144-00-262, ABOVE THE TOP OF THE BANK AND OUTSIDE ANY WETLANDS.

USE OF ADDITIONAL AREAS OUTSIDE THE 20' SEWER LINE CORRIDOR AND THE 10' ACCESS ROAD SHALL BE KEPT TO A MINIMUM AND WILL ONLY BE ALLOWED IF THEY ARE ON A PLAN PREPARED BY THE CONTRACTOR AND APPROVED BY THE CITY. ANY SUCH AREAS SHALL BE WITHIN THE MESA COUNTY OPEN SPACE OR PARCEL 2947-144-00-262, ABOVE THE TOP OF THE BANK AND OUTSIDE ANY WETLANDS.

WITHIN OUTLOT A, STA. 23+20 TO STA. 26+83, ALL DISTURBANCE SHALL BE CONTAINED WITHIN THE 20' PERMANENT UTILITY EASEMENT AND THE 10' TEMPORARY CONSTRUCTION EASEMENT.

NOTE: PIPE SLOPES SHOWN ARE FROM INSIDE FACE TO INSIDE FACE OF MHS RATHER THAN FROM C/L TO C/L. LENGTHS SHOWN ARE FROM C/L TO C/L.



REVISION	DESCRIPTION	DATE
REVISION A	CITY OF GRAND JUNCTION MODIFICATIONS	12/04
REVISION B	ADDENDUM NO. 1	1/14/05
REVISION C	AS-BUILT DRAWINGS	10/01/05

SCALE	PLAN	PROFILE	SECTIONS
HORIZONTAL	0 10 20 40	0 10 20 40	
VERTICAL		0 2.5 5 10	

GR WILLIAMS ENGINEERING, INC.
 1231 19 ROAD, FRUITA, COLORADO 81521-9689
 (970) 858-1014 PHONE (970) 858-1007 FAX

LIMEKILN GULCH INTERCEPTOR
 Sta. 19+00 to 24+00

9
FILENAME 09.DWG

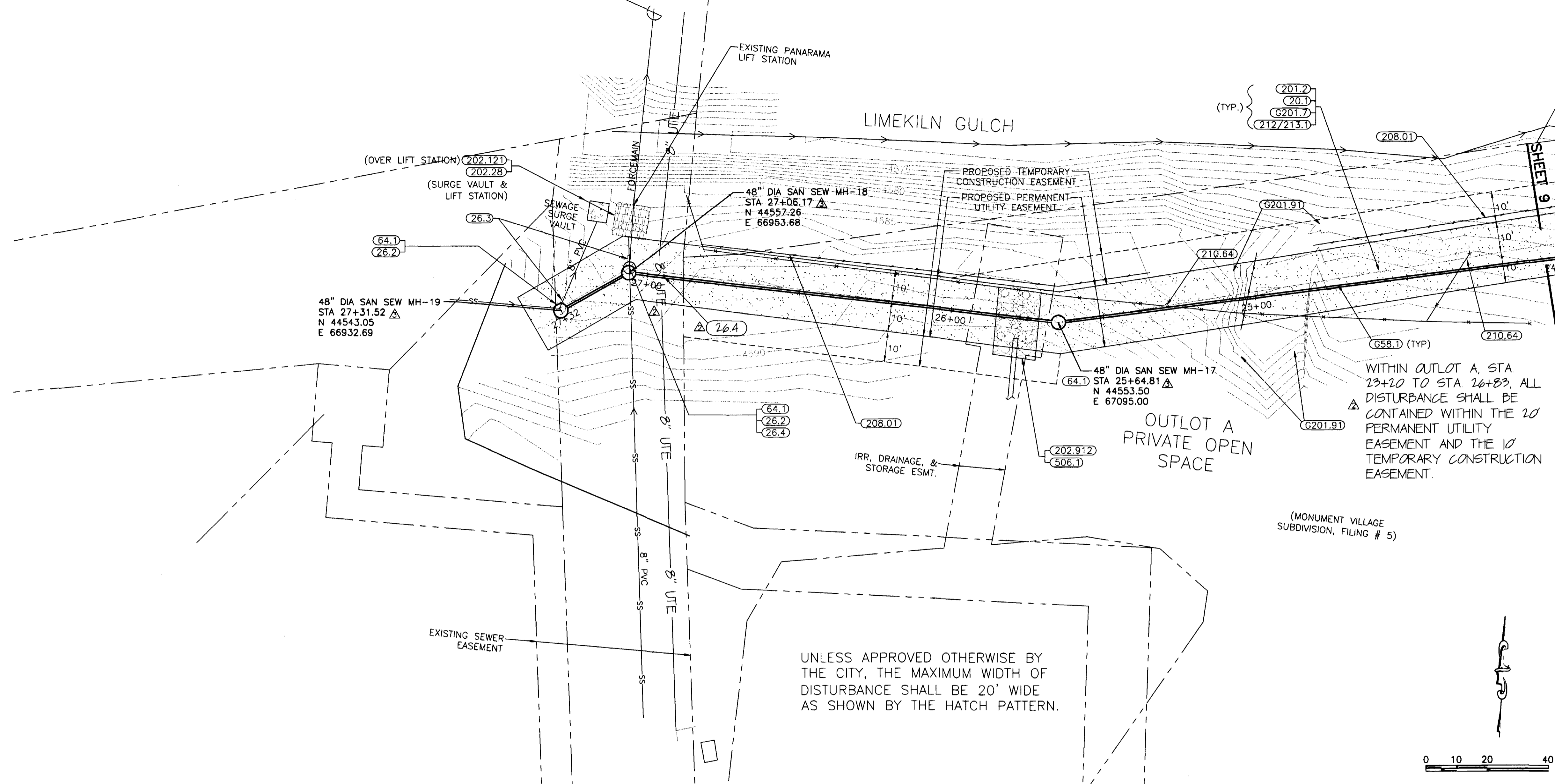
△ PLUG THE OUTLET END OF EXISTING FORCE MAIN WITH CONCRETE AT THE MANHOLE IN THE INTERSECTION OF COLONIAL DRIVE AND RUSHMORE DRIVE

SHADING AND TEXTURE LEGEND

FACILITY OR SURFACE TREATMENT	EXISTING	PROPOSED	REMOVE & REPLACE
AGGREGATE GRAVEL (CLASS 6)			
BUILDING			
LIMITS OF DISTURBANCE			
RIPRAP			
WASHED ROCK			

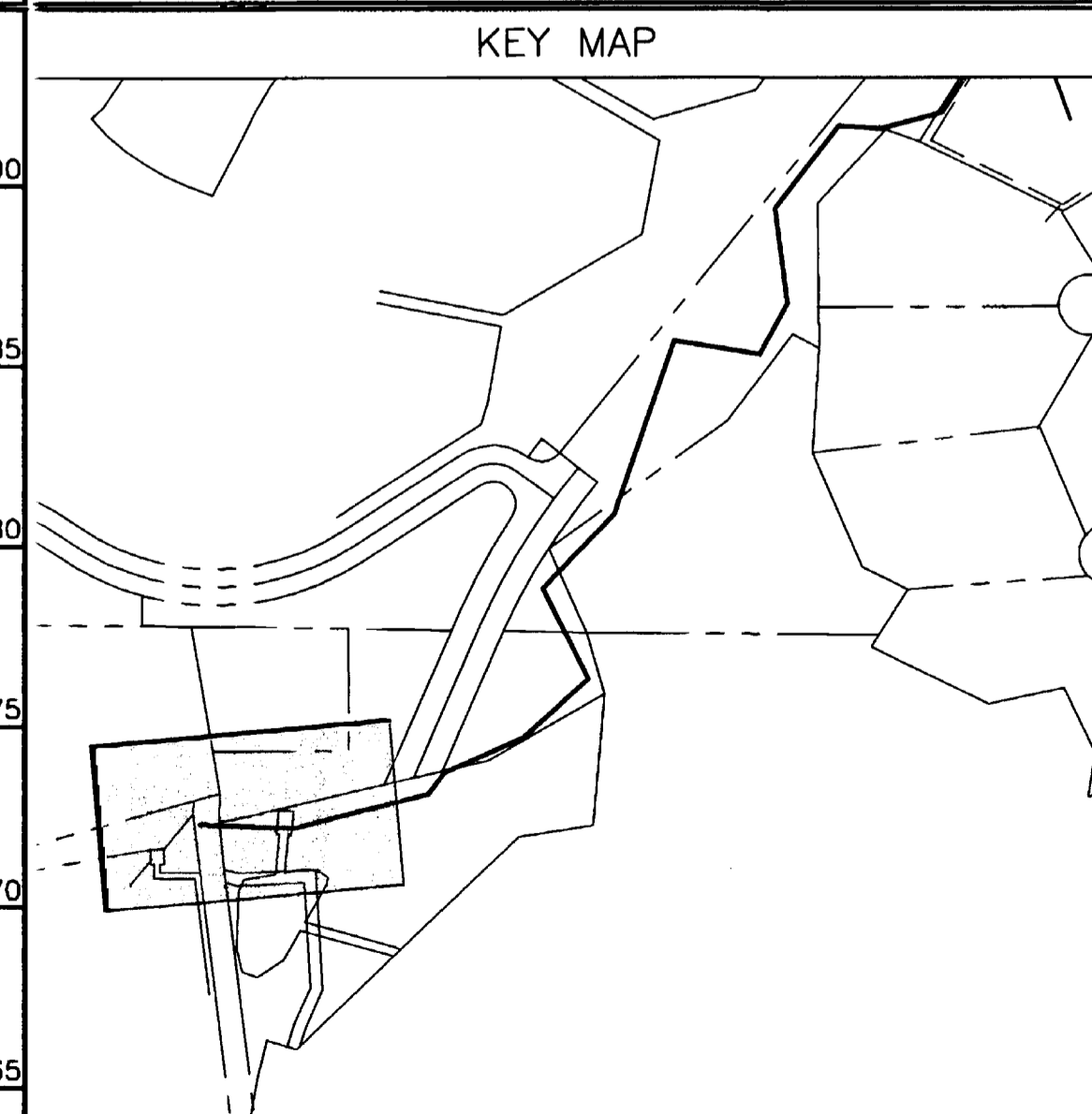
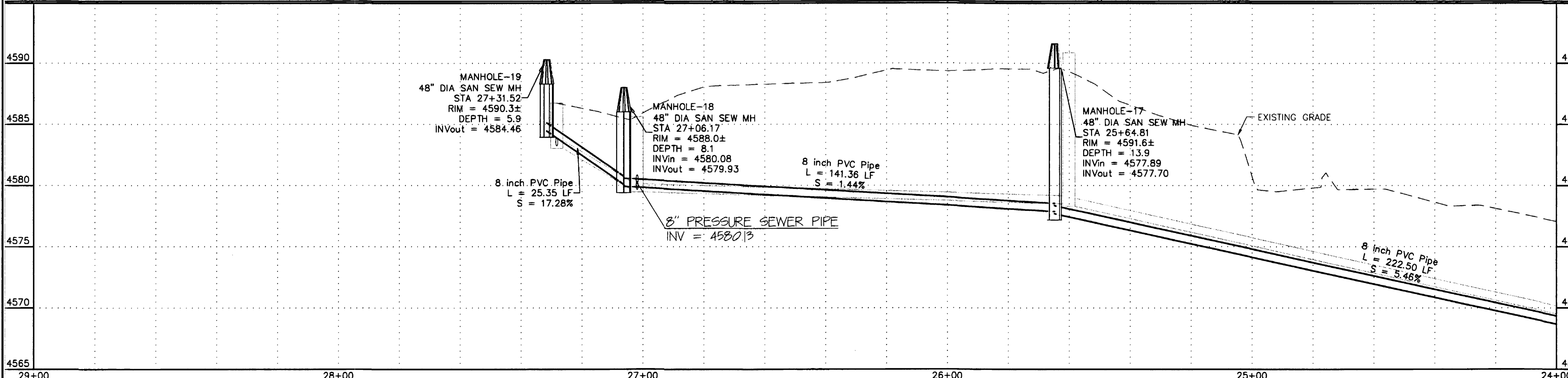
CONSTRUCTION NOTES

- 20.1 CONSTRUCT 8" SDR 35 PVC SANITARY SEWER.
- 26.2 PROVIDE BYPASS PUMPING OF SEWAGE AS REQUIRED DURING CONSTRUCTION.
- 26.3 REMOVE AND/OR PLUG EXISTING SEWER LINE OUTSIDE MANHOLE.
- 26.4 POT HOLE EXISTING UTILITY LINE TO VERIFY LOCATION AND ELEVATION.
- G58.1 CONSTRUCT CUT-OFF WALL PER STANDARD SPECIFICATIONS.
- 64.1 CONSTRUCT STANDARD 4' DIA. MH.
- 201.2 CLEAR, GRUB, REMOVE, AND DISPOSE OF ALL TREES, VEGETATION, AND/OR DEBRIS AS REQUIRED FOR CONSTRUCTION.
- G201.7 CLEAN CUT AND DISPOSE OF DAMAGED ROOTS THAT ARE 3" OR LARGER AND PROVIDE MOISTURE PROTECTION PER SPECIAL PROVISIONS.
- G201.91 PROTECT AND SAVE TREE.
- 202.121 REMOVE BUILDING
- 202.28 REMOVE AND SALVAGE PUMP STATION. FILL MANHOLE AND WELL.
- 202.912 REMOVE RIPRAP AND FABRIC LINER AS REQUIRED FOR CONSTRUCTION.
- 208.01 INSTALL SILT FENCE OR EROSION LOG ALONG THE DOWNHILL SIDE OF DISTURBED AREAS WHERE THE GROUND SLOPE EXCEEDS 10% FOR BOTH CONSTRUCTION AND POST-CONSTRUCTION CONDITIONS, AND ALONG THE TOE OF THE SLOPE ADJACENT TO THE CREEK WHEN THE CROSSINGS HAVE BEEN REMOVED.
- 210.64 REMOVE AND RESET FENCE AS REQUIRED FOR CONSTRUCTION.
- 212/213.1 SEED AND MULCH PER SPECIAL PROVISIONS ALL NON-WETLAND SURFACE AREAS DISTURBED BY CONSTRUCTION THAT WILL NOT BE HARD SURFACED OR GRAVELED.
- 506.1 CONSTRUCT LOOSE RIPRAP LINER REPLACEMENT TO MATCH EXISTING. REPLACE FABRIC LINER IF DAMAGED DURING REMOVAL.



UNLESS APPROVED OTHERWISE BY THE CITY, THE MAXIMUM WIDTH OF DISTURBANCE SHALL BE 20' WIDE AS SHOWN BY THE HATCH PATTERN.

AS-BUILT



REVISION	DESCRIPTION	DATE
REVISION A	CITY OF GRAND JUNCTION MODIFICATIONS	12/04
REVISION B	ADDENDUM NO.1	1/14/05
REVISION C	ASBUILT DRAWINGS	10/01/05

SCALE	PLAN	PROFILE	SECTIONS
HORIZONTAL	0 10 20 40	0 10 20 40	
VERTICAL		0 2.5 5 10	

GR WILLIAMS ENGINEERING, INC.
 1231 19 ROAD, FRUITA, COLORADO 81521-9689
 (970) 858-1014 PHONE (970) 858-1007 FAX

LIMEKILN GULCH INTERCEPTOR
 Sta. 24+00 to 29+00

10
FILENAME
10.DWG