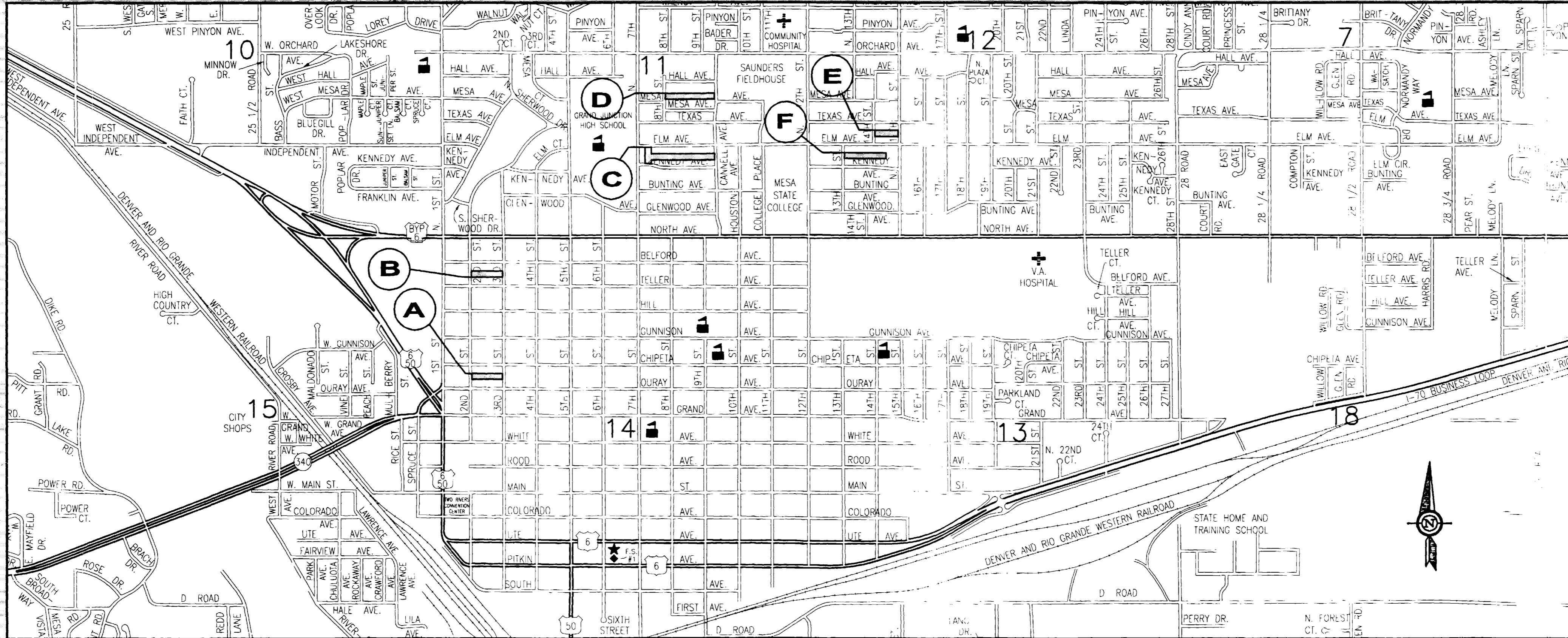


2004 ALLEY IMPROVEMENT DISTRICT

- A** — 2ND-3RD / OURAY AVE.- CHIPETA AVE.
- B** — 2ND-3RD / TELLER AVE.- BELFORD AVE.
- C** — 7TH-CANNELL / ELM AVE.- KENNEDY AVE.
- D** — 8TH-CANNELL / MESA AVE.-HALL AVE.
- E** — 14TH-15TH / ELM AVE.- TEXAS AVE.
- F** — 13TH-15TH / ELM AVE.- KENNEDY AVE.



AS BUILT
ALLEG 2004

INDEX

1. COVER SHEET
2. DRAFTING STANDARDS & ABBREVIATIONS
3. SUMMARY OF APPROXIMATE QUANTITIES
4. TYPICAL SECTIONS & DETAILS

SURFACE

5. 2ND-3RD / OURAY AVE.-CHIPETA AVE.
6. 2ND-3RD / BELFORD AVE.-TELLER AVE.
- 7.-9. 7TH-CANNELL / KENNEDY AVE.-ELM AVE.
- 10.-11. 8TH-CANNELL / HALL AVE.-MESA AVE.
- 12-13. 13TH-15TH / ELM AVE.-KENNEDY AVE.
14. 14TH-15TH / TEXAS AVE.-ELM AVE.

SEWER

15. 2ND-3RD / OURAY AVE.-CHIPETA AVE.
16. 2ND-3RD / BELFORD AVE.-TELLER AVE.
- 17.-18. 8TH-CANNELL / HALL AVE.-MESA AVE.
- 19.-20. 13TH-15TH / ELM AVE.-KENNEDY AVE.
21. 14TH-15TH / TEXAS AVE.-ELM AVE.

CONTRACTOR SHALL CALL UTILITY NOTIFICATION CENTER OF COLORADO (1-800-922-1987) CALL (2) BUSINESS DAYS IN ADVANCE BEFORE YOU DIG, EXCAVATE, OR GRADE FOR THE MARKING OF UNDERGROUND UTILITIES.

03/05/04
DRAWING STATUS
 PROGRESS
 BID SET
 FINAL CONSTRUCTION DRAWINGS
 RECORD DRAWINGS

SHEET NUMBER:
1 OF 21

PREPARED FOR
THE
CITY OF GRAND JUNCTION
DEPARTMENT OF PUBLIC WORKS AND UTILITIES

250 NORTH FIFTH STREET
GRAND JUNCTION, COLORADO
81501-2668

2004
ALLEY IMPROVEMENT DISTRICT

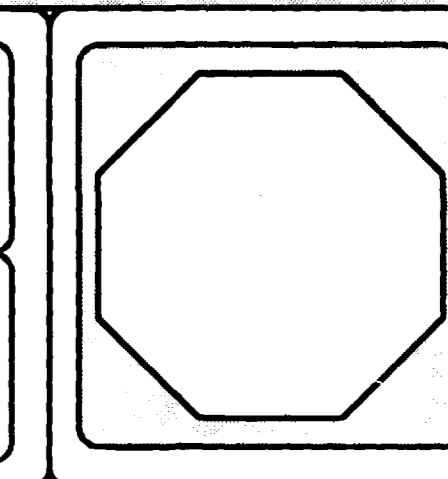
CITY OF GRAND JUNCTION, COLORADO
DEPARTMENT OF PUBLIC WORKS AND UTILITIES
ENGINEERING DIVISION

APPROVED FOR CONSTRUCTION.

City of Grand Junction Engineering Representative _____ Date _____

ACCEPTED AS CONSTRUCTED.

City of Grand Junction Engineering Representative _____ Date _____



MDY CONSULTING ENGINEERS, INC.
HORIZON PARK PLAZA
743 Horizon Ct., Ste. 311
Grand Junction, CO 81506
PH: (970) 241-2122
FAX: (970) 241-2662

CITY OF GRAND JUNCTION DRAFTING STANDARDS AND ABBREVIATIONS

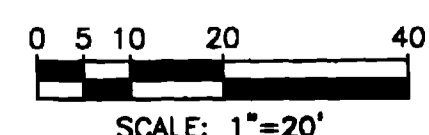
ENTITY DESCRIPTION

ENTITY DESCRIPTION	LAYER	LINE TYPE	BLOCK	SPACING
EASEMENT LINE	EX-EASE	DASHED	-	-
PROPERTY OR TRACT LINE	PROP	PHANTOM2	-	-
RAILROAD	EX-RR	LDD (SPECIAL)	-	PER FIELD
EDGE OF PAVEMENT	EXIST/ASPH	CONTINUOUS	EP	30
RIGHT OF WAY	ROW	ROW	-	-
BARBED WIRE FENCE	EXIST/NEW	CONTINUOUS	BARB	15
CHAIN LINK FENCE	EXIST/NEW	CONTINUOUS	CHAIN	15
BARRIER TYPE FENCE	EXIST/NEW	CONTINUOUS	BARRIER	15
WOVEN WIRE FENCE	EXIST/NEW	CONTINUOUS	WOVEN	15
WOOD FENCE	EXIST/NEW	CONTINUOUS	WOOD	15
EXISTING GUARD RAIL	EXIST	CONTINUOUS	GUARD	5
NEW GUARD RAIL	NEW	CONTINUOUS	NEWGUARD	5
RETAINING WALL	EXIST	CONTINUOUS	RETAIN	6
SIDEWALK	EXIST/CONC	CONTINUOUS	-	-
CURB & GUTTER	EXIST/CONC	CONTINUOUS	-	-
CURB, GUTTER & SIDEWALK	EXIST/CONC	CONTINUOUS	-	-
BURIED FIBER OPTIC CABLE	UTIL	CONTINUOUS	-	-
BURIED TELEPHONE CABLE	UTIL	CONTINUOUS	-	-
BURIED ELECTRIC CABLE	UTIL	CONTINUOUS	-	-
GAS LINE	UTIL	CONTINUOUS	-	-
WATER LINE	UTIL/WATER	CONTINUOUS	-	-
ABANDON UTILITY (ABANDON WATER SHOWN)	UTIL/WATER	CONTINUOUS	-	-
FORCE MAIN SANITARY SEWER	UTIL/SEWER	CONTINUOUS	AROW	-
SANITARY SEWERS	UTIL/SEWER	CONTINUOUS	AROW	-
STORM SEWERS	UTIL/STORM	CONTINUOUS	AROW	-
UNDERGROUND IRRIG. PIPE	UTIL/NEW	CONTINUOUS	AROW	-
SIPHON PIPE	UTIL/NEW	CONTINUOUS	AROW	-
EARTH DITCH	EXIST/NEW	DIVIDE	-	-
CONCRETE DITCH	EXIST/CONC	CONTINUOUS	-	-
CULVERT	EXIST/NEW	DASHED	-	-
CULVERT WITH END SECTION	EXIST/NEW	DASHED	-	-
MONUMENT/SECTION LINE	0	CONTINUOUS	-	-
CONTROL LINE	0	CONTINUOUS	-	100
CENTERLINE	0	CENTER2	-	-
MATCH LINE	0	CONTINUOUS	-	-

TEXT STYLE DESCRIPTIONS

TEXT	- FONT=ROMANS, HEIGHT=2.0, WIDTH FACTOR=1.0
HEADINGS	- FONT=ROMANS, HEIGHT=3.0, WIDTH FACTOR=1.0
TITLE	- FONT=COMPLEX, HEIGHT=4.0, WIDTH FACTOR=1.2
ASBLT	- FONT=ROMANS, HEIGHT=2.0, WIDTH FACTOR=1.0

* UTILITIES SHOWN IN THE EXISTING TOPO SHALL BE SHOWN ON A SEPARATE LAYER SUCH AS EX-WATER, EX-SEWER, EX-TELE, AND SO ON



LIST OF ABBREVIATIONS

ABC	AGGREGATE BASE COURSE	F	FIBER OPTICS	PC	POINT OF CURVATURE
AASHTO	AMERICAN ASSOCIATION OF STATE HIGHWAY & TRANSPORTATION OFFICIALS	FB	FULL BODY	PE	POLYETHYLENE
AC	ASBESTOS CEMENT	FL	FLANGE	PI	POINT OF INTERSECTION
ASTM	AMERICAN SOCIETY FOR TESTING MATERIALS	FTG	FOOTING	PIP	PLASTIC IRRIGATION PIPE
AWWA	AMERICAN WATER WORKS ASSOCIATION	FS	FAR SIDE	PR	PROPOSED
BC	BACK OF CURB	E	FLOW LINE	PRC	POINT OF REVERSE CURVATURE
BF	BUTTERFLY VALVE	FC	FACE OF CURB	PT	POINT OF TANGENCY
BOW	BACK OF WALK	FG	FINISHED GRADE	PVC	POLYVINYL CHLORIDE
BCR	BEGIN CURB RETURN	GV	GATE VALVE	PCC	PORTLAND CEMENT CONCRETE
BOT	BOTTOM				
CH	CHORD	HBP	HOT BITUMINOUS PAVEMENT	R	RADIUS
CAP	CORRUGATED ALUMINUM PIPE	HDPE	HIGH DENSITY POLYETHYLENE	RG	RESTRAINED GLANDS
CDOT	COLORADO DEPARTMENT OF TRANSPORTATION	IRRIG	IRRIGATION	RP	RADIUS POINT
CI	CAST IRON	L	LENGTH OF ARC	RR	RAIL ROAD
CL or Ci	CLEAR	LF	LEFT	RCP	REINFORCED CONCRETE PIPE
CONC	CONCRETE	LL	LONG ARC	REQ'D	REQUIRED
CMP	CORRUGATED METAL PIPE	LS	SHORT ARC	RT	RIGHT OF WAY
CSP	CORRUGATED STEEL PIPE	MH	MANHOLE	RL	LONG RADIUS
CG & SW	CURB, GUTTER & SIDEWALK	MJ	MECHANICAL JOINT	RS	SHORT RADIUS
CU	COPPER	MW	MILL WRAP	SCH	SCHEDULE
CL	LONG CHORD	N/A	NOT APPLICABLE	S	SLOPE
CS	SHORT CHORD	NS	NEAR SIDE	STA	STATION
DI	DUCTILE IRON	NIC	NOT IN CONTRACT	STL	STEEL
DR	DRIVEWAY	NRCP	NON-REINFORCED CONCRETE PIPE	(TYP)	TYPICAL
EG	EDGE OF GUTTER	NOP	NO ONE PERSON	T	LENGTH OF TANGENT
ELEC	ELECTRIC	NTS	NOT TO SCALE	TC	TOP OF CURB
EL or ELEV	ELEVATION			VC	VERTICAL CURVE
ECR	END CURB RETURN			VPC	VITRIFIED CLAY PIPE
EP	EDGE OF PAVEMENT			VPI	VERTICAL POINT OF CURVATURE
EX	EXISTING			VPT	VERTICAL POINT OF INTERSECTION
					VERTICAL POINT OF TANGENCY

ENTITY CHARACTERISTICS

ENTITY	LAYER	COLOR	TEXT STYLE	LINE TYPE
DIMENSION LINES	0	WHITE	-	CONTINUOUS
TEXT	TEXT	YELLOW	TEXT	-
SHEET TITLE	TITLE	CYAN	TITLE	-
STREET NAMES	TITLE	CYAN	TITLE	-
SUBTITLES	TITLE	CYAN	HEADINGS	-
AS BUILT INFO.	ASBLT	RED	ASBLT	-
ROW LINES	ROW	RED	-	PHANTOM
EXISTING TOPO	EXIST	251	-	CONTINUOUS
NEW CONCRETE	CONC	GREEN	-	CONTINUOUS
NEW ASPHALT	ASPH	YELLOW	-	DASHED
PROPERTY LINES	PROP	BLUE	-	PHANTOM
SHADING	HATCH	WHITE	-	HATCH
EXISTING PROFILE	EXPRO	WHITE	-	DASHED
NEW PROFILE	PROFILE	GREEN	-	CONTINUOUS
SOLID GRID	GRID1	253	-	CONTINUOUS
DOTTED GRID	GRID2	7	-	L1
EXISTING UTILITY	AS SHOWN ON PROF1999 SHEET	251	-	CONTINUOUS
NEW SEWER	SEWER	15	-	CONTINUOUS
NEW STORM SEWER	STORM	9	-	CONTINUOUS
NEW WATER	WATER	9	-	CONTINUOUS
NEW MISC.	NEW	MAGENTA	-	CONTINUOUS
SHEET BORDER	BORDER	GREEN	-	PLINE (WIDTH=1)

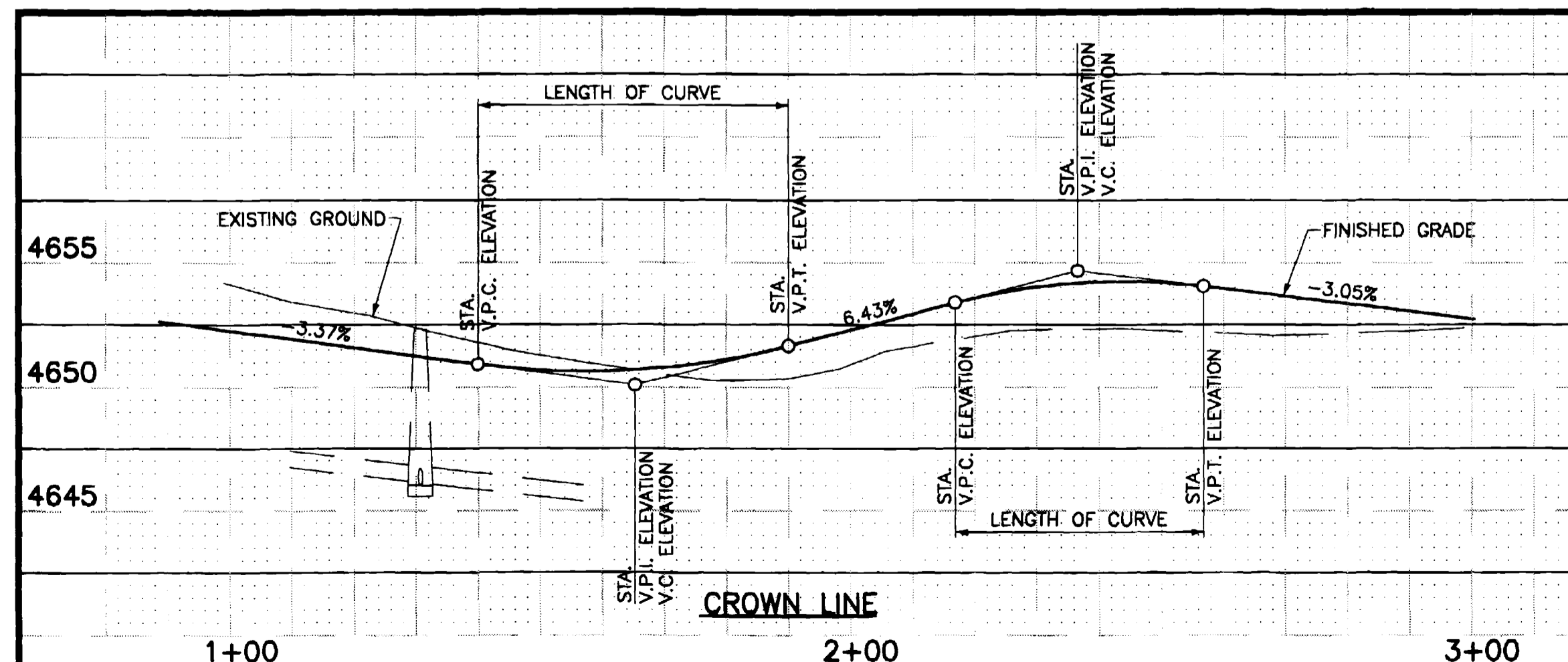
PLOTTING PARAMETERS

COLOR NAME	LINE WEIGHT (INKJET PLOTTERS)	PEN SIZE (PEN PLOTTERS)
RED	0.035	0.50
YELLOW	0.015	0.35
GREEN	0.035	0.70
CYAN	0.025	0.50
BLUE	0.010	0.25
MAGENTA	0.025	0.50
WHITE	0.015	0.25
8	0.010	0.25
9	0.035	0.70
10	-	-
11	-	-
12	-	-
13	-	-
14	-	-
15	0.035	0.70
16	0.035	0.70
251	0.015	-
253	0.015	-

SHADING LEGEND

	STYLE=DOTS, SCALE=20, ROTATION=45°	INDICATES ASPHALT REMOVAL AND/OR REPLACEMENT
	STYLE=ANSI31, SCALE=20, ROTATION=0°	INDICATES CONCRETE REMOVAL AND/OR REPLACEMENT

VERTICAL CURVE DETAIL



CROWN LINE

N:\Cadd\CITY-STD\DETAILS\std2234-R2.dwg 04/11/01 03:36:43 PM MDT

REVISION	DESCRIPTION	DATE	DRAWN BY	DATE	SCALE
REVISION			DESIGNED BY	DATE	PLAN
REVISION			CHECKED BY	DATE	PROF. 1"=20'
REVISION			APPROVED BY	DATE	VERT. 1"=5'

**DEPARTMENT OF PUBLIC WORKS AND UTILITIES
ENGINEERING AND TECHNICAL SERVICES DIVISIONS
CITY OF GRAND JUNCTION, COLORADO**

**2004 ALLEY IMPROVEMENT DISTRICT
DRAFTING STANDARDS**

SUMMARY OF APPROXIMATE QUANTITIES

Item No.	CDOT City Ref.	Description	Quantity	Units	2nd- 3rd / Ouray- Chipeta	2nd- 3rd / Teller- Belford	7th-Cannell / Elm- Kennedy	8th- Cannell / Mesa-Hall	14th- 15th / Elm-Texas	13th-15th (W-E) / Kennedy- Elm	Contingency
CONCRETE ALLEY CONSTRUCTION											
1	202	Removal of Concrete Curbs, Gutters, Sidewalks, Driveways, Slabs and other miscellaneous concrete. Sawcut where necessary.	450.	S.Y.	152.	155.	5.	62.	44.	22.	10.
2	202	Removal of Incinerator where approved by the Engineer.	9.	EA.							9.
3	202	Removal of wall (6" wide).	Lump	Sum			1.				
4	202, 304, 401	Removal of existing Asphalt 2' wide. Patch with Hot Bituminous Pavement (3" thick)(Grading SX) over Aggregate Base Course (Class 6)(6" thick).	100.	S.Y.	19.	21.		19.	17.	8.	16.
5	304, 401	Patch pavement with Hot Bituminous Pavement (3" thick)(Grading SX) over Aggregate Base Course (Class 6)(6" thick).	45.	S.Y.			40.				5.
6	202	Removal of tree	1.	EA.			1.				
7	203	Unclassified Excavation (Complete in Place).	1,800.	C.Y.	276.	217.	449.	308.	199.	343.	8.
8	203	Disposal of Radioactive Materials	20.	C.Y.							20.
9	206	Flow fill to be used where directed by the Inspector.	50.	C.Y.							50.
10	209	Dust Abatement.	50.	DAY							50.
11	210	Adjust Manhole Ring & Cover to grade.	1.	EA.				1.			
12	304	Subgrade Stabilization (Class 3) (Complete in Place).	150.	TON							150.
13	304, 207, 212	Edge Treatment - Aggregate Base Course (Class 6), Top Soil, Sod or Landscape Ground Cover all at 1' wide.	7,075.	S.F.	810.	810.	2,223.	1,388.	675.	1,170.	1.
14	412	Concrete Pavement (6" thick).	5,805.	S.Y.	721.	721.	1,499.	1,231.	595.	1,027.	11.
15	412	Concrete Pavement (2" thick) (Additional concrete pavement thickness to be added at soft subgrade locations as directed by the	290.	S.Y.							290.
16	420	Geotextile (Separator) Class B.	290.	S.Y.							290.
17	608	Concrete Driveway Section (8" thick).	350.	S.Y.	125.	127.		40.	36.	17.	5.
18	608	Concrete Driveway Section (4" thick).	50.	S.Y.	7.				7.	16.	20.
19	608	Monolithic Vertical Curb, Gutter and Sidewalk (6" wide).	20.	L.F.					15.		5.
20	608	Monolithic Curb, Gutter and Sidewalk (Roll Type Curb).	20.	S.Y.				7.		5.	8.
21	608	Concrete Curb and Gutter (2' wide).	65.	L.F.	18.	23.		15.			9.
22	608	Concrete Sidewalk (4" thick).	80.	S.Y.	26.	26.		13.			15.
23	620	Sanitary Facility.	Lump	Sum							1.
24	625	Construction Surveying (Alley).	Lump	Sum							1.
25	626	Mobilization.	Lump	Sum							1.
26	630	Traffic Control (Complete in Place).	140.	DAY							140.
27	630	Traffic Control Plan.	Lump	Sum							1.
28	G-56	Weekly News Letters	Lump	Sum							1.

Item No.	CDOT City Ref.	Description	Quantity	Units	2nd- 3rd / Ouray- Chipeta	2nd- 3rd / Teller- Belford	7th-Cannell / Elm- Kennedy	8th- Cannell / Mesa-Hall	14th- 15th / Elm-Texas	13th-15th (W-E) / Kennedy- Elm	Contingency
SANITARY SEWER CONSTRUCTION											
29	202, 304, 401	Remove existing Asphalt. Patch sewer trench with Hot Bituminous Pavement (3" thick)(Grading SX) over Aggregate Base Course (Class 6)(6" thick).	135.	S.Y.	29.	37.			14.	43.	12.
30	202	Removal of Structure (Manhole).	6.	EA.	1.	1.		2.	1.	1.	
31	102.9a, 108.2	8" Dia. Gravity Sewer Pipe (SDR 35 PVC) including Imported Backfill & Compaction.	2,450.	L.F.	470.	482.		636.	251.	605.	6.
32	102.9a, 108.2	4" Dia. Gravity Sewer Pipe (SDR 35 PVC) including Imported Backfill & Compaction, connection to the existing line and active tap verification.	1,040.	L.F.	220.	320.		220.	110.	170.	
33	102.9, 108.3	8" x 4" Sewer Service Wye including fittings	105.	EA.	22.	32.		22.	11.	17.	1.
34	108.5	Connect to Existing Manhole (6" Pipe). Reconstruct manhole base as necessary.	6.	EA.	1.	1.		1.	1.	2.	
35	108.5	Connect Existing Sewer (6" or 8" Pipe) to New Manhole.	3.	EA.	1.	1.			1.		
36	102.11, 108.5	Sanitary Sewer Basic Manhole Components (48" I.D.).	6.	EA.	1.	1.		2.	1.	1.	
37	102.11, 108.5	Manhole Barrel (D>5")(48" I.D.).	12.	L.F.	1.3	1.8		3.	2.4	1.9	1.6
38	108.7	Granular Stabilization Material (Type B).	175.	C.Y.							175.
39	625	Construction Surveying (Sewer)	Lump	Sum							1.
40		Replace Manhole Ring & Cover (Smooth Cover).	1.	EA.				1.			
41	212	Sod.	200.	S.F.				180.			20.
42	210	Reset Sprinkler Heads	10.	EA.				7.			3.

CONTRACTOR SHALL CALL UTILITY NOTIFICATION CENTER OF COLORADO (1-800-922-1987) CALL (2) BUSINESS DAYS IN ADVANCE BEFORE YOU DIG, EXCAVATE, OR GRADE FOR THE MARKING OF UNDERGROUND UTILITIES.

PREPARED FOR
THE
CITY OF GRAND JUNCTION
DEPARTMENT OF PUBLIC WORKS AND UTILITIES

250 NORTH FIFTH STREET
GRAND JUNCTION, COLORADO
81501-2668

2004
ALLEY IMPROVEMENT DISTRICT

**2004 ALLEY IMPROVEMENT DISTRICT
SUMMARY OF APPROXIMATE QUANTITIES**

SHEET NUMBER:
3 OF 21

MDY
CONSULTING
ENGINEERS, INC.

HORIZON PARK PLAZA
743 Horizon Ct., Ste. 311
Grand Junction, CO 81506
PH: (970) 241-2122
FAX: (970) 241-2662

CHIPETA AVE.

CONSTRUCTION NOTES:

- ① 102.11 STA. 0+62.71, 0.55' RT., CENTER OF NEW 48" DIA. MANHOLE.
- ② STA. 5+01.90, 0.33' RT. EXISTING MANHOLE TO REMAIN. REMOVE EXISTING 6" DIA. PIPE FROM MANHOLE. ENLARGE HOLE AS NEEDED TO INSERT A NEW 8" DIA. PIPE. GROUT PIPE INTO MANHOLE (SEE STANDARD DETAIL SS-08).
- ③ 102.9a 8" DIA. PVC SEWER PIPE, SDR 35, L= 439.2 L.F.
- ④ 102.9 8" X 4" FULL BODY WYE FOR SERVICE TAP INCLUDING 4" DIA. PVC SEWER PIPE. VERIFY THAT THE TAP IS ACTIVE. CONNECT NEW SERVICE LINE TO THE EXISTING SERVICE LINE WITH A CALDER COUPLER ENCASED IN CONCRETE OR MISSION COUPLER. IN THE EVENT THE SERVICE LINE IS PVC, THE CLOSURE SHALL BE MADE WITH A RIGID PVC CLOSURE WITH GASKETED JOINTS. EXTEND NEW SERVICE LINE TO THE RIGHT OF WAY LINE
- ⑤ 202 JACKHAMMER OR WHEELCUT AND REMOVE EXISTING PAVEMENT TO THE DIMENSIONS SHOWN. PATCH TRENCH WITH 3" OF HOT BITUMINOUS PAVEMENT (GRADING SX) OVER A 6" THICKNESS OF AGGREGATE BASE COURSE CLASS 6.
- ⑥ 202 REMOVAL OF STRUCTURE. (1 EA.)

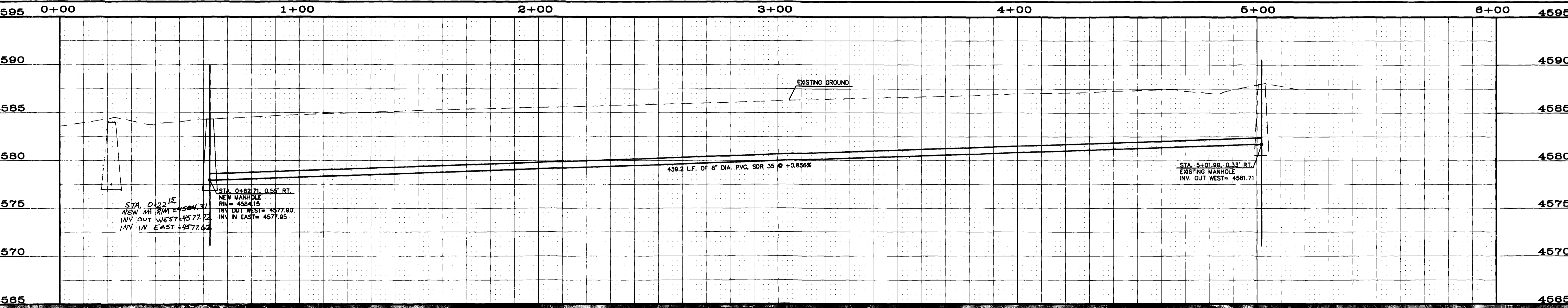
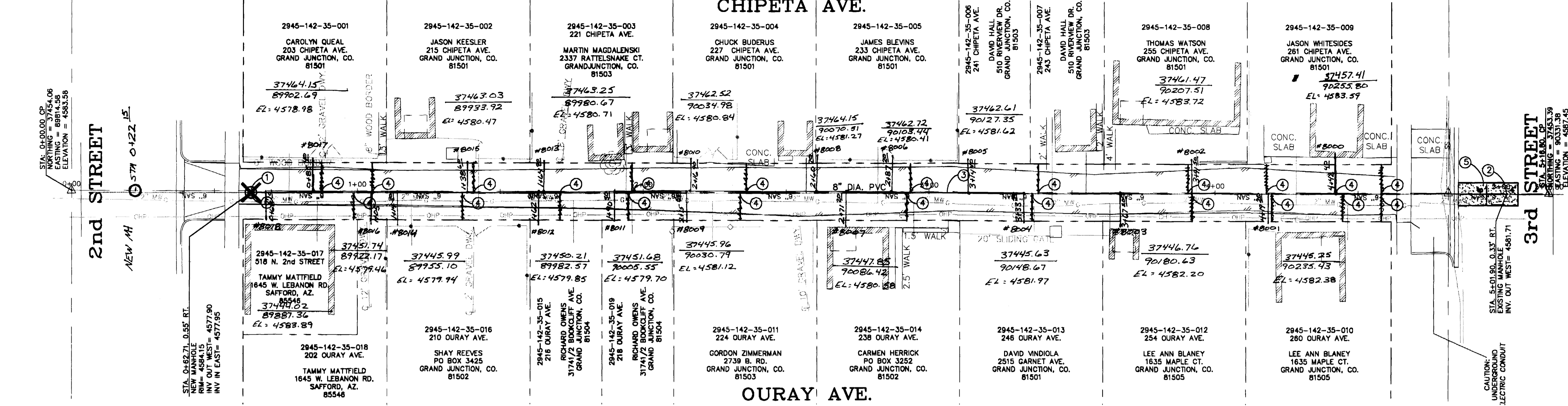
ASPHALT REMOVAL AND/OR REPLACEMENT.

2nd STREET

3rd STREET

OURAY AVE.

* ALL ELEV. ARE TO TOP PIPE



6.62 6.25 Rem 479.75 15.37

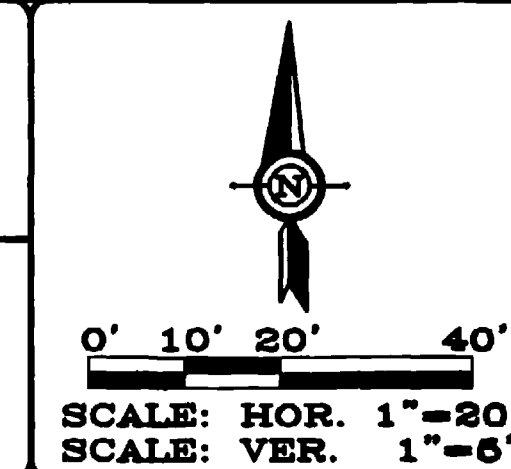
REVISIONS:			
No.	DATE	REMARKS	BY

CONTRACTOR SHALL CALL UTILITY NOTIFICATION CENTER OF COLORADO (1-800-922-1987) CALL (2) BUSINESS DAYS IN ADVANCE BEFORE YOU DIG, EXCAVATE, OR GRADE FOR THE MARKING OF UNDERGROUND UTILITIES.

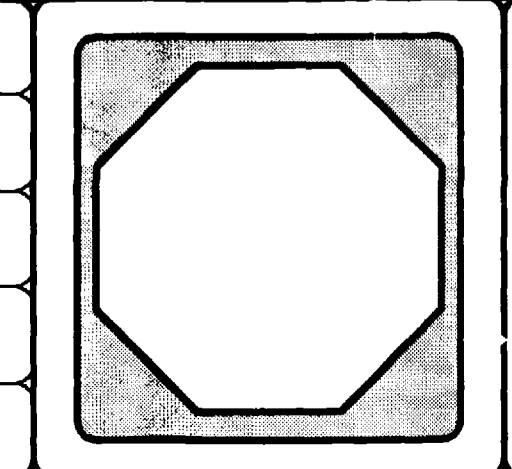
PREPARED FOR THE
CITY OF GRAND JUNCTION
 DEPARTMENT OF PUBLIC WORKS AND UTILITIES

250 NORTH FIFTH STREET
 GRAND JUNCTION, COLORADO
 81501-2668

2004
ALLEY IMPROVEMENT DISTRICT
 2ND-3RD / OURAY AVE.- CHIPETA AVE.
SEWER PLAN & PROFILE



DESIGNED BY: MDY P.E. No. 29912	DATE DRAWN: 09-23-03
REVIEWED BY: MDY P.E. No. 29912	SCALE: HORIZ. 1"=20' VERT. 1"=5'
SURVEYED BY: KRS P.L.S. No.: 28882	ACAD DRAWING NAME: 02-716.DWG
SURVEY DATE: NOVEMBER 2002	PROJECT NUMBER: 04-901
DRAWN BY: GMR	SHEET NUMBER: 15 OF 21

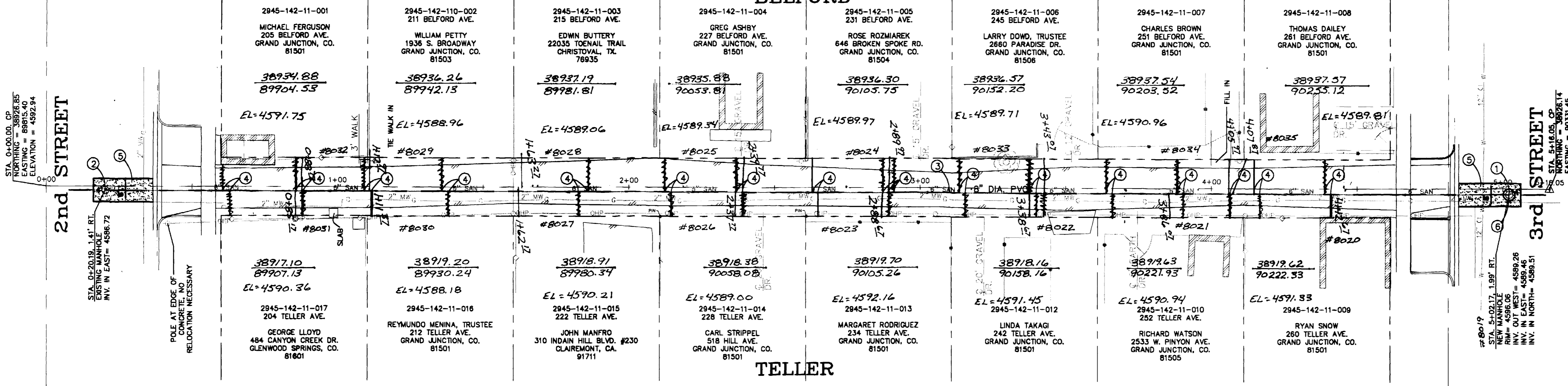


MDY CONSULTING ENGINEERS, INC.

HORIZON PARK PLAZA
 743 Horizon Ct., Ste. 311
 Grand Junction, CO 81506
 PH: (970) 241-2122
 FAX: (970) 241-2662

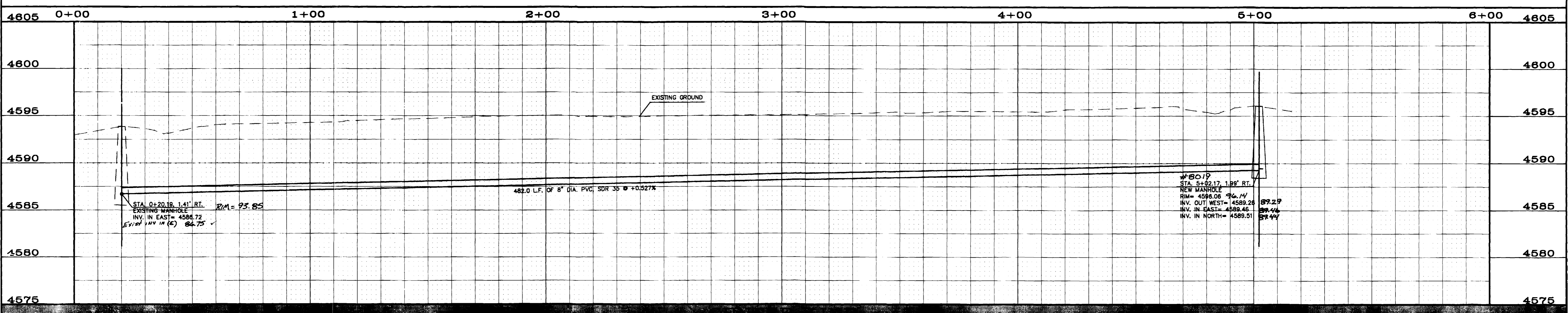
BELFORD

CONSTRUCTION NOTES:



- ① 102.11 STA. 5+02.17, 1.99' RT., CENTER OF NEW 48" DIA. MANHOLE.
 - ② STA. 0+20.19, 1.41' RT. EXISTING MANHOLE TO REMAIN. REMOVE EXISTING 6" DIA. PIPE FROM MANHOLE. ENLARGE MANHOLE AS NEEDED TO INSERT A NEW 8" DIA. PIPE. GROUPE PIPE INTO MANHOLE. (SEE STANDARD DETAIL SS-08).
 - ③ 102.9a 8" DIA. PVC SEWER PIPE, SDR 35, L= 482.0 L.F.
 - ④ 102.9 8" X 4" FULL BODY WYE FOR SERVICE TAP INCLUDING 4" DIA. PVC SEWER PIPE. VERIFY THAT THE TAP IS ACTIVE. CONNECT NEW SERVICE LINE TO THE EXISTING SERVICE LINE WITH A CALDER COUPLING ENCASED IN CONCRETE OR MISSION COUPLER. IN THE EVENT THE SERVICE LINE IS PVC, THE CLOSURE SHALL BE MADE WITH A RIGID PVC CLOSURE WITH GASKETED JOINTS. EXTEND NEW SERVICE LINE TO THE RIGHT OF WAY LINE.
 - ⑤ 202 JACKHAMMER OR WHEELCUT AND REMOVE EXISTING PAVEMENT TO THE DIMENSIONS SHOWN. PATCH TRENCH WITH 3" OF HOT BITUMINOUS PAVEMENT (GRADING SX) OVER A 6" THICKNESS OF AGGREGATE BASE COURSE CLASS 6.
 - ⑥ 202 REMOVAL OF STRUCTURE (1 EA.).
- ASPHALT REMOVAL AND/OR REPLACEMENT.

* ALL ELEV ARE TO TOP OF PIPE



7.13

481.85

6.85

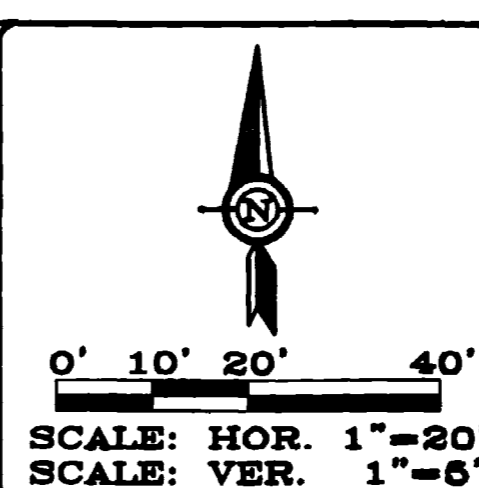
CONTRACTOR SHALL CALL UTILITY NOTIFICATION CENTER OF COLORADO (1-800-922-1987) CALL (2) BUSINESS DAYS IN ADVANCE BEFORE YOU DIG, EXCAVATE, OR GRADE FOR THE MARKING OF UNDERGROUND UTILITIES.

REVISIONS:			
No.	DATE	REMARKS	BY

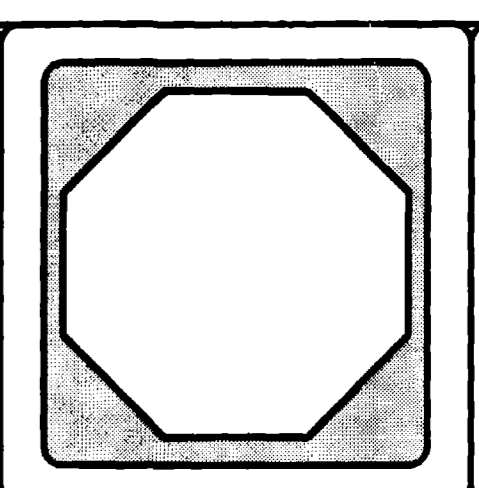
PREPARED FOR THE
CITY OF GRAND JUNCTION
DEPARTMENT OF PUBLIC WORKS AND UTILITIES

250 NORTH FIFTH STREET
GRAND JUNCTION, COLORADO
81501-2668

2004
ALLEY IMPROVEMENT DISTRICT
2ND-3RD / BELFORD AVE.- TELLER AVE.
SEWER PLAN & PROFILE



DESIGNED BY: MDY P.E. No. 29912	DATE DRAWN:
REVIEWED BY: MDY P.E. No. 29912	SCALE: HORIZ. 1"=20' VERT. 1"=5'
	ACAD DRAWING NAME:
	PROJECT NUMBER: 04-901
DRAWN BY: GMR	SHEET NUMBER: 16 OF 21

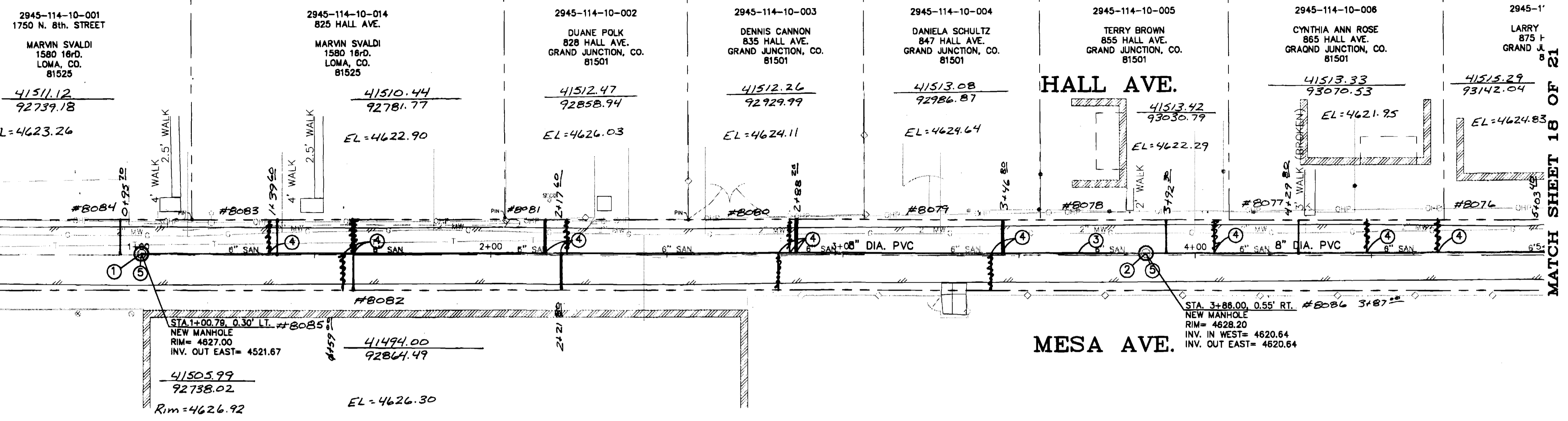


MDY CONSULTING ENGINEERS, INC.
HORIZON PARK PLAZA
743 Horizon Ct., Ste. 311
Grand Junction, CO 81506
PH: (970) 241-2122
FAX: (970) 241-2662

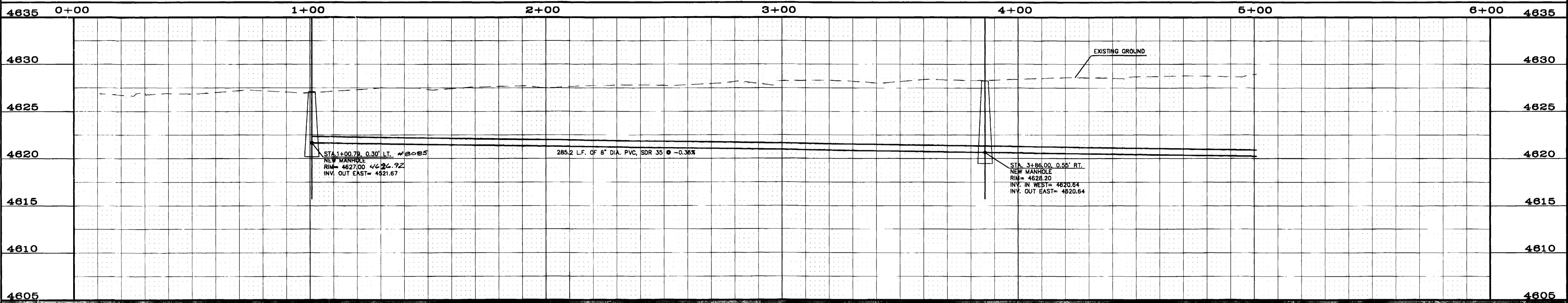
CONSTRUCTION NOTES:

- ① 102.11 STA. 1+00.79, 0.30' LT., CENTER OF NEW 48" DIA. MANHOLE.
- ② 102.11 STA. 3+86.00, 0.55' LT., CENTER OF NEW 48" DIA. MANHOLE.
- ③ 102.90 8" DIA. PVC SEWER PIPE, SDR 35, L= 399.2 L.F. (THIS SHEET).
- ④ 102.9 8" X 4" FULL BODY WYE FOR SERVICE TAP INCLUDING 4" DIA. PVC SEWER PIPE. VERIFY THAT THE TAP IS ACTIVE. CONNECT NEW SERVICE LINE TO THE EXISTING SERVICE LINE WITH A CALDER COUPLER ENCASED IN CONCRETE OR MISSION COUPLER. IN THE EVENT THE SERVICE LINE IS PVC, THE CLOSURE SHALL BE MADE WITH A RIGID PVC CLOSURE WITH GASKETED JOINTS. EXTEND NEW SERVICE LINE TO THE RIGHT OF WAY LINE
- ⑤ 202 REMOVAL OF STRUCTURE. (2 EA.)

CONTROL POINTS:
 8TH & MESA AVE. CSM
 NORTHING = 41403.98
 EASTING = 92643.41
 ELEVATION = 4626.14
 8TH & HALL AVE. CSM
 NORTHING = 41711.40
 EASTING = 92643.17
 ELEVATION = 4627.02
 MATCH FLOWLINE
 15.1' LT



* ALL ELEV ARE TO TOP OF PIPE



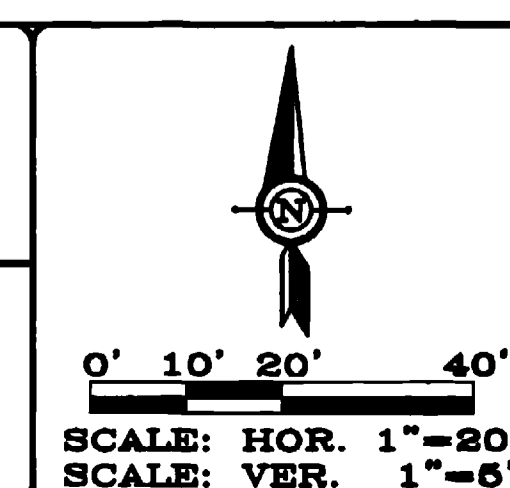
REVISIONS:

No.	DATE	REMARKS	BY

PREPARED FOR
 THE
CITY OF GRAND JUNCTION
 DEPARTMENT OF PUBLIC WORKS AND UTILITIES

250 NORTH FIFTH STREET
 GRAND JUNCTION, COLORADO
 81501-2668

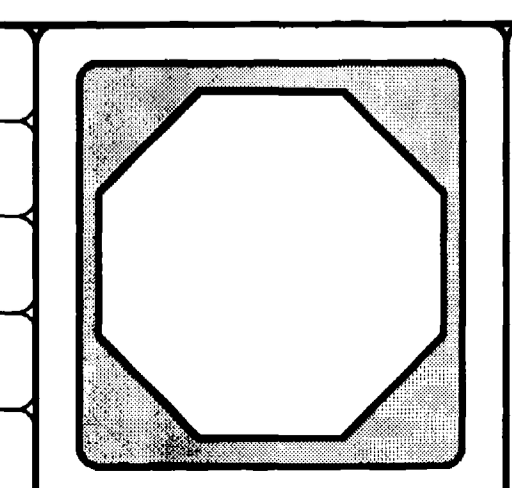
2004
ALLEY IMPROVEMENT DISTRICT
8TH-CANNELL / HALL AVE.-MESA AVE.
SEWER PLAN & PROFILE



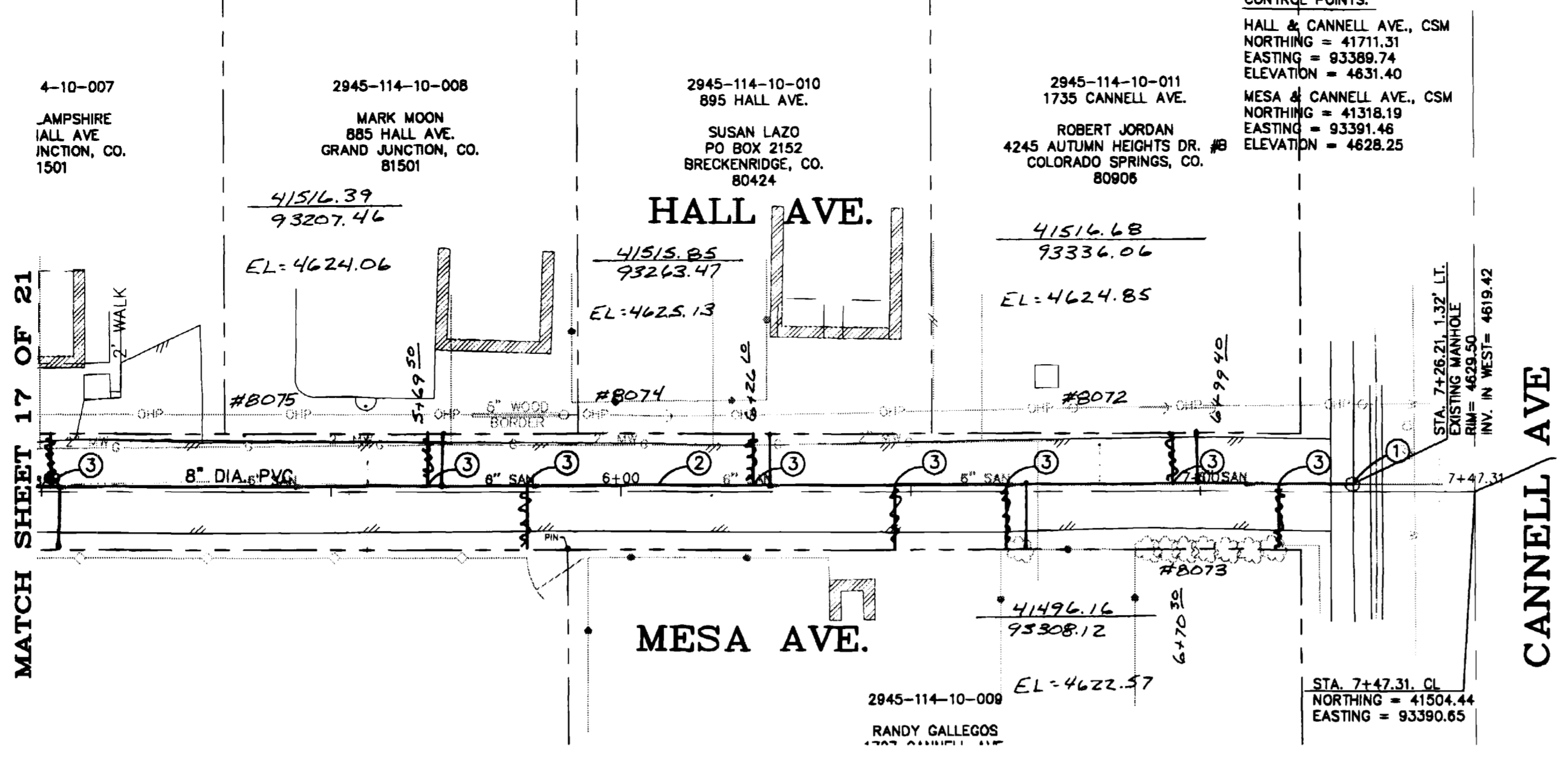
DESIGNED BY: MDY
 P.E. No. 29912
 REVIEWED BY: MDY
 P.E. No. 29912

DATE DRAWN:
 SCALE: HORIZ. 1"=20'
 VERT. 1"=5'
 ACAD DRAWING NAME:
 PROJECT NUMBER:
 04-001
 SHEET NUMBER:
 17 OF 21

DRAWN BY:
 GMR

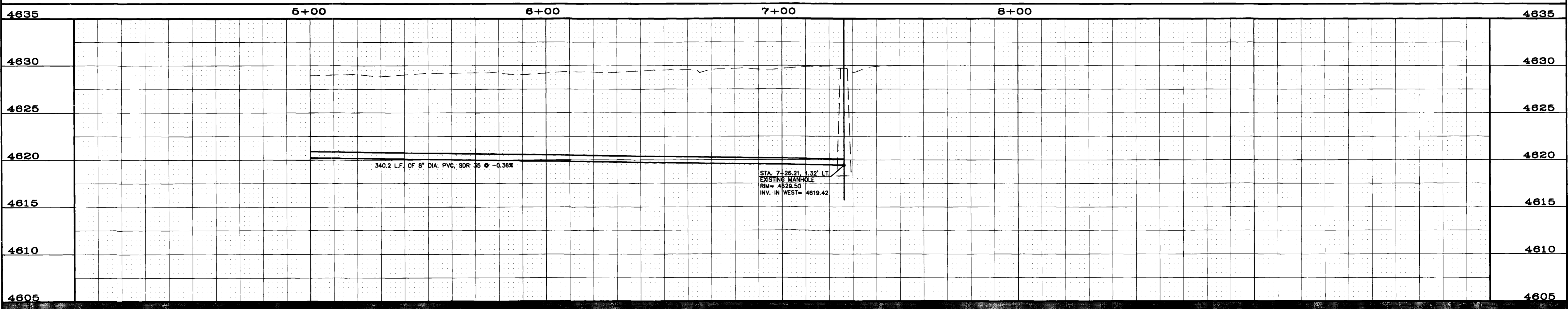


MDY CONSULTING ENGINEERS, INC.
 HORIZON PARK PLAZA
 743 Horizon Ct., Ste. 311
 Grand Junction, CO 81506
 PH: (970) 241-2122
 FAX: (970) 241-2662



CONSTRUCTION NOTES:

- ① 102.11 STA. 7+26.21, 1.32' LT. EXISTING MANHOLE TO REMAIN. REMOVE THE EXISTING 8" DIA. PIPE FROM THE MANHOLE. ENLARGE HOLE AS NEEDED TO INSERT A NEW 8" DIA. PIPE. GROUT PIPE INTO MANHOLE. (SEE STANDARD DETAIL SS-08)
- ② 102.9a 8" DIA. PVC SEWER PIPE, SDR 35, L= 226.2 L.F. (THIS SHEET).
- ③ 102.9 8" X 4" FULL BODY WYE FOR SERVICE TAP INCLUDING 4" DIA. PVC SEWER PIPE. VERIFY THAT THE TAP IS ACTIVE. CONNECT NEW SERVICE LINE TO THE EXISTING SERVICE LINE WITH A CALDER COUPLER ENCASED IN CONCRETE OR MISSION COUPLER. IN THE EVENT THE SERVICE LINE IS PVC, THE CLOSURE SHALL BE MADE WITH A RIGID PVC CLOSURE WITH GASKETED JOINTS. EXTEND NEW SERVICE LINE TO THE RIGHT OF WAY LINE



339.21

CONTRACTOR SHALL CALL UTILITY NOTIFICATION CENTER OF COLORADO (1-800-922-1987) CALL (2) BUSINESS DAYS IN ADVANCE BEFORE YOU DIG, EXCAVATE, OR GRADE FOR THE MARKING OF UNDERGROUND UTILITIES.

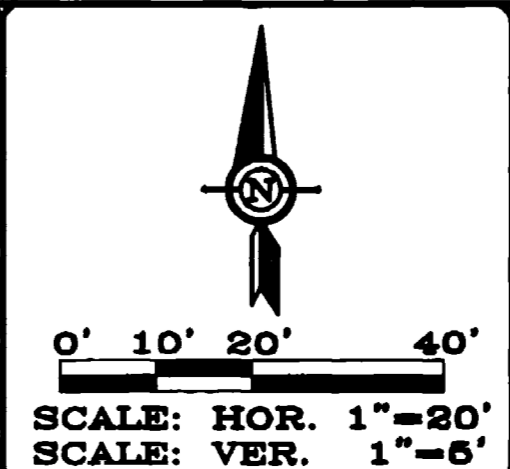
REVISIONS:

No.	DATE	REMARKS	BY

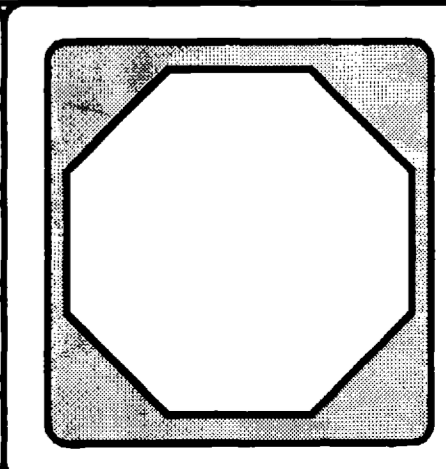
PREPARED FOR
THE
CITY OF GRAND JUNCTION
DEPARTMENT OF PUBLIC WORKS AND UTILITIES

250 NORTH FIFTH STREET
GRAND JUNCTION, COLORADO
81501-2668

2004
ALLEY IMPROVEMENT DISTRICT
8TH-CANNELL / HALL AVE.-MESA AVE.
SEWER PLAN & PROFILE



DESIGNED BY: MDY P.E. No. 29912	DATE DRAWN: 03/05/04
REVIEWED BY: MDY P.E. No. 29912	SCALE: HORIZ. 1"=20' VERT. 1"=5'
	ACAD DRAWING NAME:
	PROJECT NUMBER: 04-801
DRAWN BY: GMR	SHEET NUMBER: 18 OF 21



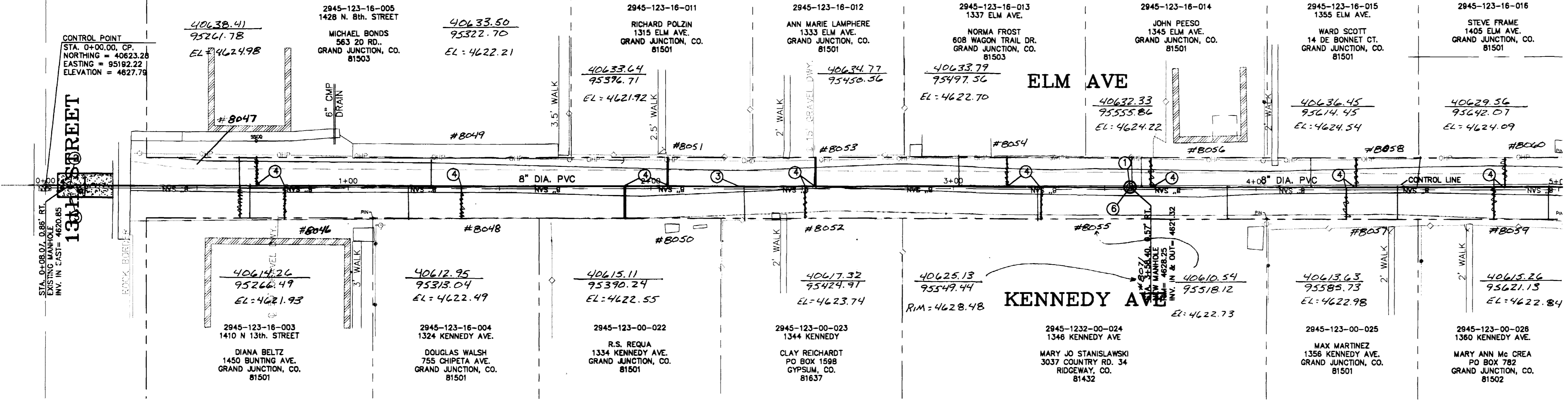
MDY CONSULTING ENGINEERS, INC.

HORIZON PARK PLAZA
743 Horizon Ct., Ste. 311
Grand Junction, CO 81506
PH: (970) 241-2122
FAX: (970) 241-2662

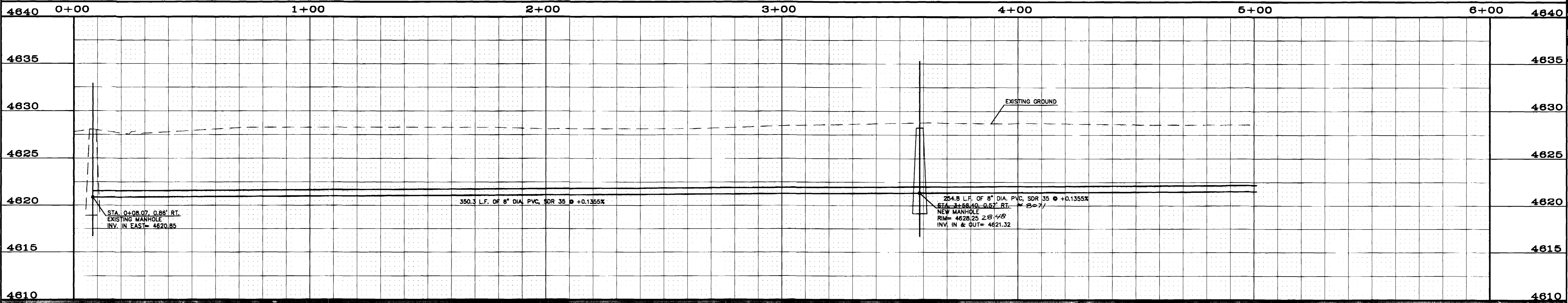
CONSTRUCTION NOTES:

- ① 102.11 STA. 3+58.40', 0.57' RT., CENTER OF NEW 48" DIA. MANHOLE.
- ② STA. 0+08.07, 0.86' LT. EXISTING MANHOLE TO REMAIN. REMOVE EXISTING 6" DIA. PIPE FROM MANHOLE. ENLARGE HOLE AS NEEDED TO INSERT A NEW 8" DIA. PIPE. GROUT PIPE INTO MANHOLE. (SEE STANDARD DETAIL SS-08)
- ③ 102.9a 8" DIA. PVC SEWER PIPE, SDR 35, L= 491.9 L.F. (THIS SHEET)
- ④ 102.9 8" X 4" FULL BODY WYE FOR SERVICE TAP INCLUDING 4" DIA. PVC SEWER PIPE. VERIFY THAT THE TAP IS ACTIVE. CONNECT NEW SERVICE LINE TO THE EXISTING SERVICE LINE WITH A CALDER COUPLING ENCASED IN CONCRETE OR MISSION PVC. IN THE EVENT THE SERVICE LINE IS PVC, THE CLOSURE SHALL BE MADE WITH A RIGID PVC CLOSURE WITH GASKETED JOINTS. EXTEND NEW SERVICE LINE TO THE RIGHT OF WAY LINE
- ⑤ 202 304 401 JACKHAMMER OR WHEELCUT AND REMOVE EXISTING PAVEMENT TO THE DIMENSIONS SHOWN. PATCH TRENCH WITH 3" OF HOT BITUMINOUS PAVEMENT (GRADING SX) OVER A 6" THICKNESS OF AGGREGATE BASE COURSE CLASS 6.
- ⑥ 202 REMOVAL OF STRUCTURE (1 EA.).

ASPHALT REMOVAL AND/OR REPLACEMENT.



ALL ELEV ARE TO TOP OF PIPE



360 34

7.16

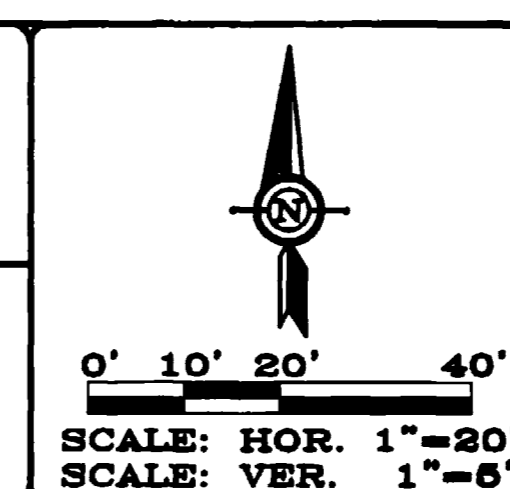
CONTRACTOR SHALL CALL UTILITY NOTIFICATION CENTER OF COLORADO (1-800-922-1987) CALL (2) BUSINESS DAYS IN ADVANCE BEFORE YOU DIG, EXCAVATE, OR GRADE FOR THE MARKING OF UNDERGROUND UTILITIES.

REVISIONS:			
No.	DATE	REMARKS	BY

PREPARED FOR THE
CITY OF GRAND JUNCTION
DEPARTMENT OF PUBLIC WORKS AND UTILITIES

250 NORTH FIFTH STREET
GRAND JUNCTION, COLORADO
81501-2688

2004
ALLEY IMPROVEMENT DISTRICT
13TH-15TH / ELM AVE.-KENNEDY AVE.
SEWER PLAN & PROFILE



DESIGNED BY: MDY
P.E. No. 29912

REVIEWED BY: MDY
P.E. No. 29912

DRAWN BY: GMR

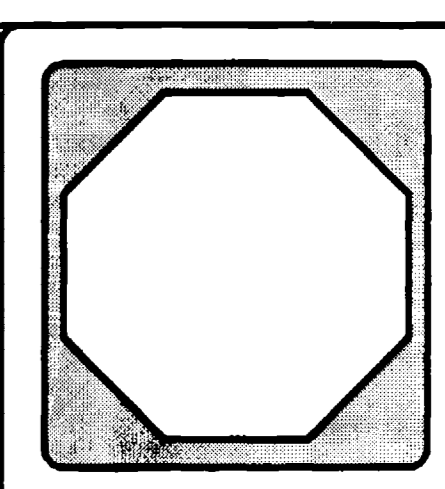
DATE DRAWN: 03/05/04

SCALE: HORIZ. 1"=20'
VERT. 1"=5'

ACAD DRAWING NAME:

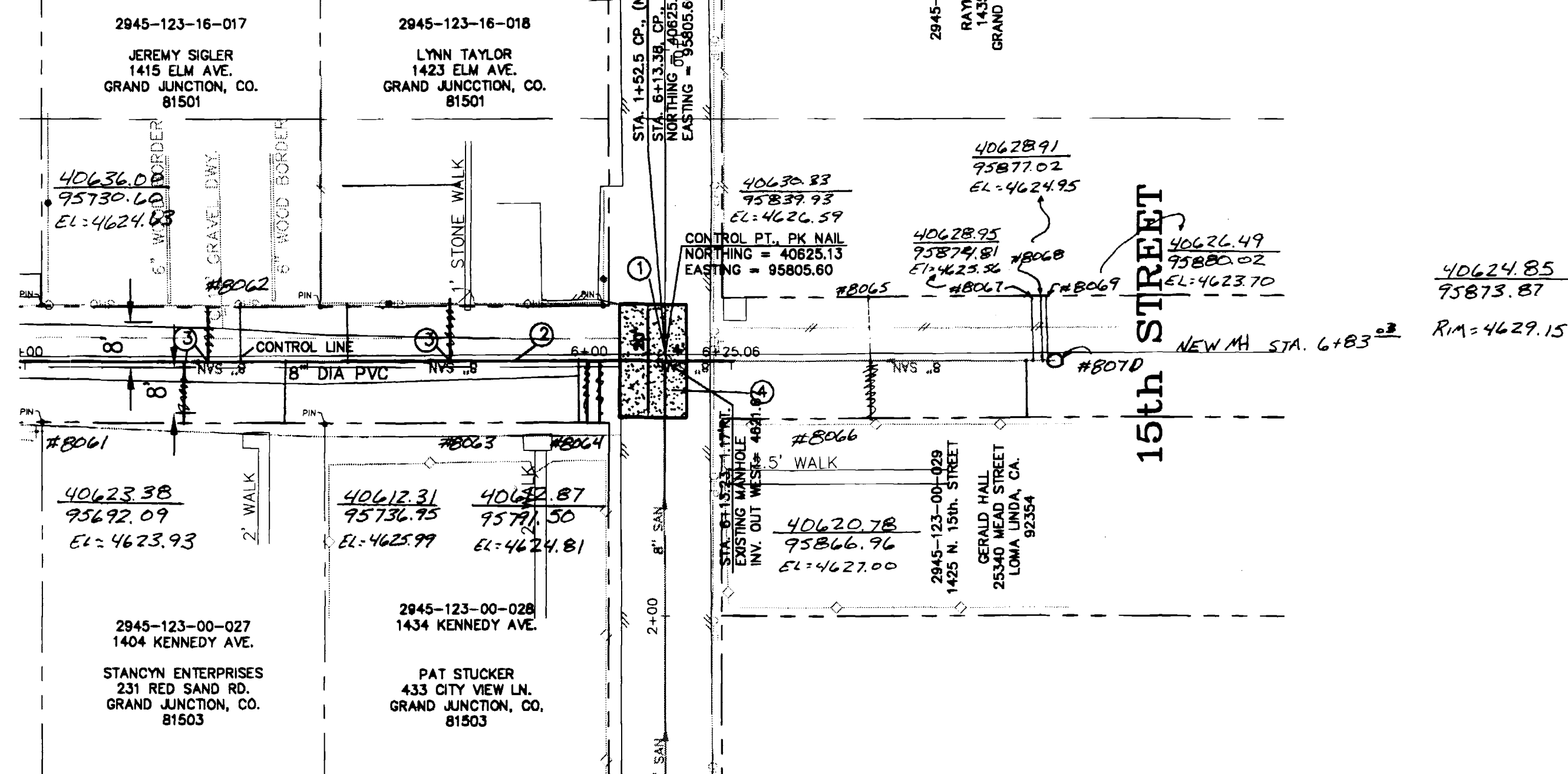
PROJECT NUMBER: 04-901

SHEET NUMBER: 19 OF 21



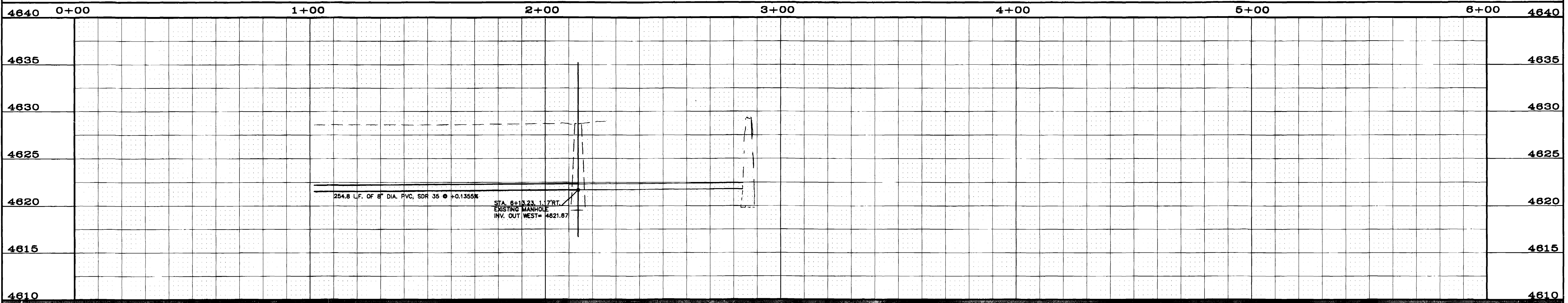
MDY CONSULTING ENGINEERS, INC.

HORIZON PARK PLAZA
743 Horizon Ct., Ste. 311
Grand Junction, CO 81506
PH: (970) 241-2122
FAX: (970) 241-2662



CONSTRUCTION NOTES:

- ① STA. 6+13.23, 1.17' RT. EXISTING MANHOLE TO REMAIN. REMOVE EXISTING 6" DIA. PIPE FROM MANHOLE. ENLARGE HOLE AS NEEDED TO INSERT A NEW 8" DIA. PIPE. GROUT PIPE INTO MANHOLE. (SEE STANDARD DETAIL SS-08)
- ② 102.9a 8" DIA. PVC SEWER PIPE, SDR 35, L= 113.2 L.F. (THIS SHEET)
- ③ 102.9 8" X 4" FULL BODY WYE FOR SERVICE TAP INCLUDING 4" DIA. PVC SEWER PIPE. VERIFY THAT THE TAP IS ACTIVE. CONNECT NEW SERVICE LINE TO THE EXISTING SERVICE LINE WITH A CALDER COUPLER ENCASED IN CONCRETE OR MISSION COUPLER. IN THE EVENT THE SERVICE LINE IS PVC, THE CLOSURE SHALL BE MADE WITH A RIGID PVC CLOSURE WITH GASKETED JOINTS. EXTEND NEW SERVICE LINE TO THE RIGHT OF WAY LINE
- ④ 202 JACKHAMMER OR WHEELCUT AND REMOVE EXISTING PAVEMENT TO THE DIMENSIONS SHOWN. PATCH TRENCH WITH 3" OF HOT BITUMINOUS PAVEMENT (GRADING SX) OVER A 6" THICKNESS OF AGGREGATE BASE COURSE CLASS 6.



CONTRACTOR SHALL CALL UTILITY NOTIFICATION CENTER OF COLORADO (1-800-922-1987) CALL (2) BUSINESS DAYS IN ADVANCE BEFORE YOU DIG, EXCAVATE, OR GRADE FOR THE MARKING OF UNDERGROUND UTILITIES.

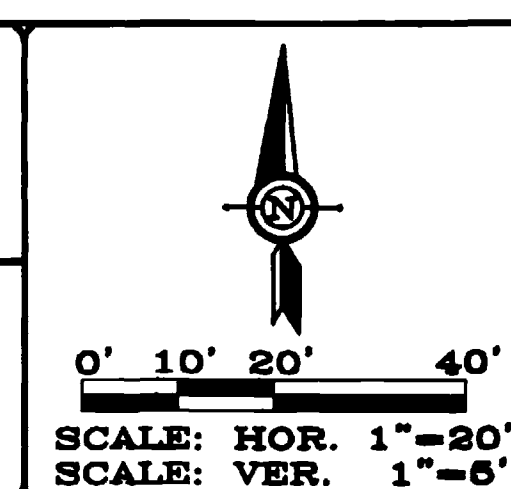
REVISIONS:

No.	DATE	REMARKS	BY

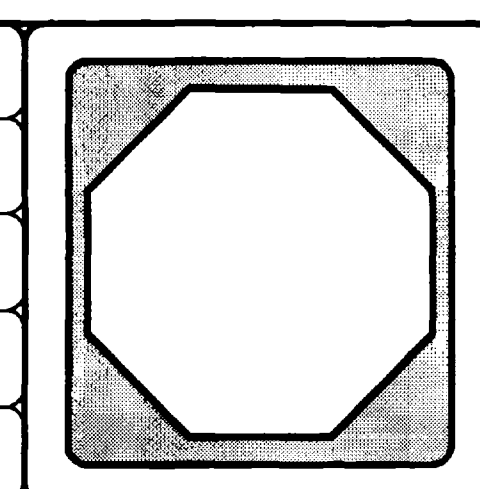
PREPARED FOR
THE
CITY OF GRAND JUNCTION
DEPARTMENT OF PUBLIC WORKS AND UTILITIES

250 NORTH FIFTH STREET
GRAND JUNCTION, COLORADO
81501-2668

2004
ALLEY IMPROVEMENT DISTRICT
13TH-15TH / ELM AVE.-KENNEDY AVE.
SEWER PLAN & PROFILE



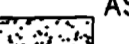
DESIGNED BY: MDY P.E. No. 29912	DATE DRAWN: 03/05/04
REVIEWED BY: MDY P.E. No. 29912	SCALE: HORIZ. 1"=20' VERT. 1"=5'
	ACAD DRAWING NAME:
	PROJECT NUMBER: 04-801
DRAWN BY: GMR	SHEET NUMBER: 20 OF 21

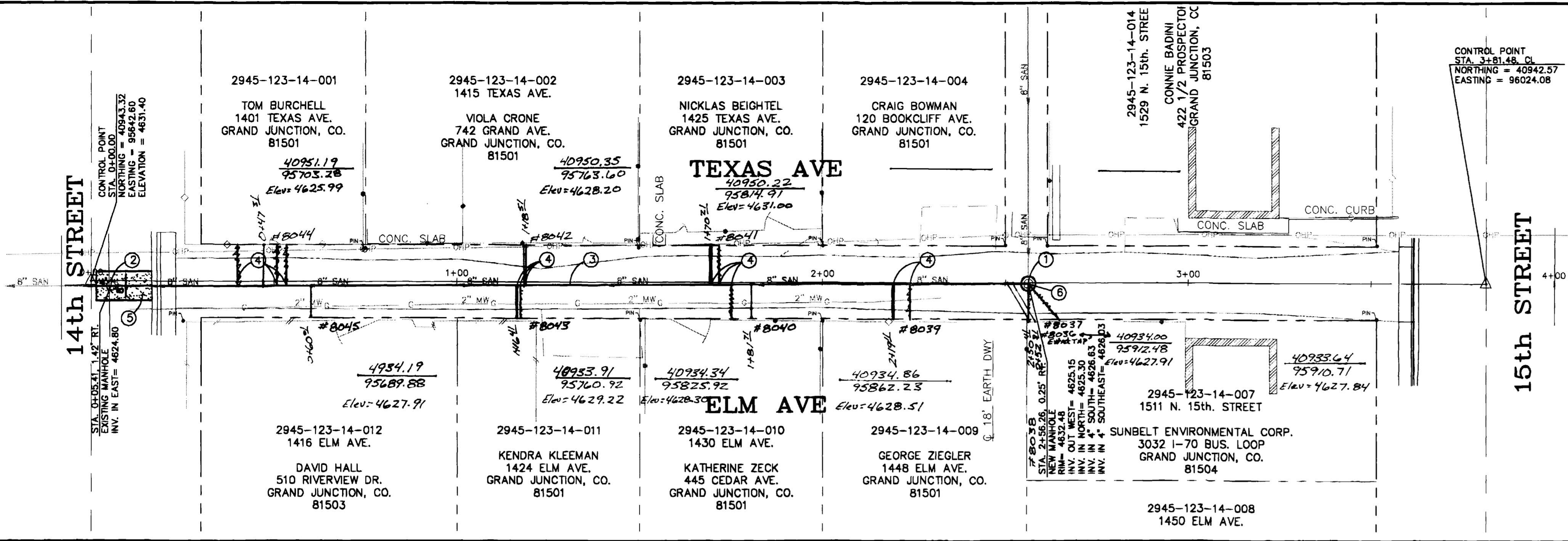


MDY CONSULTING ENGINEERS, INC.

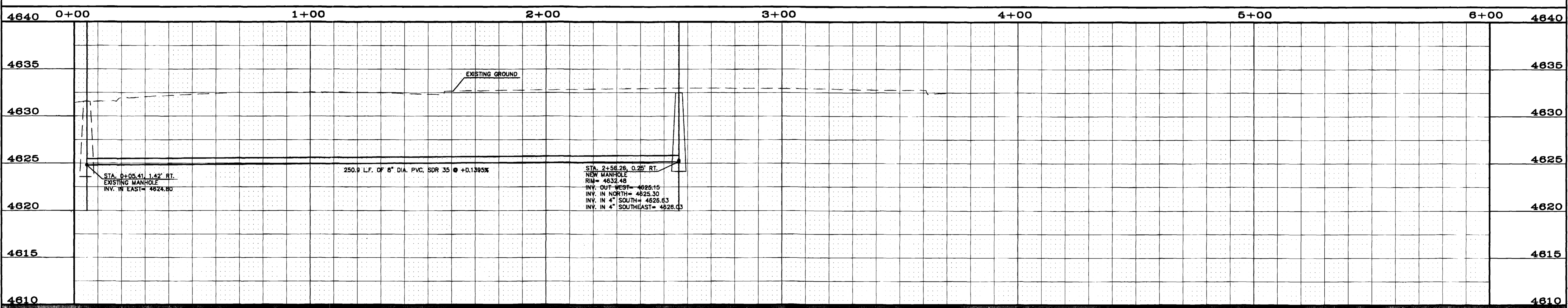
HORIZON PARK PLAZA
743 Horizon Ct., Ste. 311
Grand Junction, CO 81506
PH: (970) 241-2122
FAX: (970) 241-2662

CONSTRUCTION NOTES:

- ① 102.11 STA. 2+56.26, 0.25' RT., CENTER OF NEW 48" DIA. MANHOLE.
 - ② STA. 0+05.41, 1.42' RT. EXISTING MANHOLE TO REMAIN. REMOVE EXISTING 6" DIA. PIPE FROM MANHOLE. ENLARGE HOLE AS NEEDED TO INSERT A NEW 8" DIA. PIPE. GROUT PIPE INTO MANHOLE. (SEE STANDARD DETAIL SS-08)
 - ③ 102.9a 8" DIA. PVC SEWER PIPE, SDR 35, L= 250.9 L.F.
 - ④ 102.9 8" X 4" FULL BODY WYE FOR SERVICE TAP INCLUDING 4" DIA. PVC SEWER PIPE. VERIFY THAT THE TAP IS ACTIVE. CONNECT NEW SERVICE LINE TO THE EXISTING SERVICE LINE WITH A CALDER COUPLER ENCASED IN CONCRETE OR MISSION COUPLER. IN THE EVENT THE SERVICE LINE IS PVC, THE CLOSURE SHALL BE MADE WITH A RIGID PVC CLOSURE WITH GASKETED JOINTS. EXTEND NEW SERVICE LINE TO THE RIGHT OF WAY LINE
 - ⑤ 202 JACKHAMMER OR WHEELCUT AND REMOVE EXISTING PAVEMENT TO THE DIMENSIONS SHOWN. PATCH TRENCH WITH 3" OF HOT BITUMINOUS PAVEMENT (GRADING SX) OVER A 6" THICKNESS OF AGGREGATE BASE COURSE CLASS 6.
 - ⑥ 202 REMOVAL OF STRUCTURE (1 EA.).
-  ASPHALT REMOVAL AND/OR REPLACEMENT.



ALL ELEV. ARE TO TOP OF PIPE



251.4
7.33

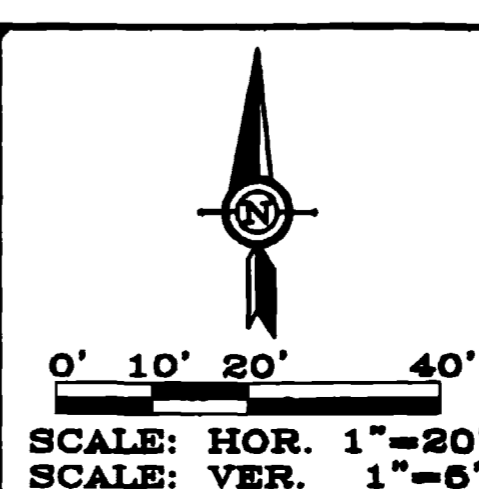
CONTRACTOR SHALL CALL UTILITY NOTIFICATION CENTER OF COLORADO (1-800-822-1987) CALL (2) BUSINESS DAYS IN ADVANCE BEFORE YOU DIG, EXCAVATE, OR GRADE FOR THE MARKING OF UNDERGROUND UTILITIES.

REVISIONS:			
No.	DATE	REMARKS	BY

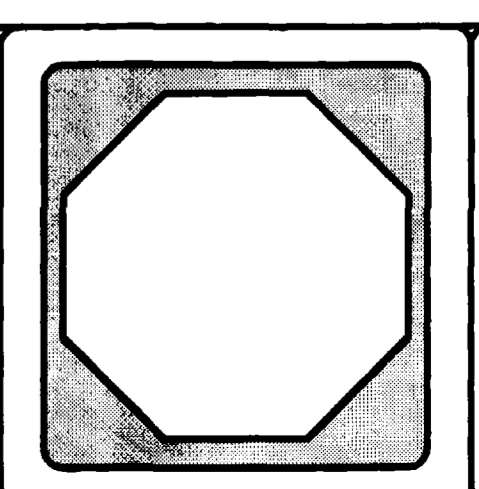
PREPARED FOR
THE
CITY OF GRAND JUNCTION
DEPARTMENT OF PUBLIC WORKS AND UTILITIES

250 NORTH FIFTH STREET
GRAND JUNCTION, COLORADO
81501-2668

2004
ALLEY IMPROVEMENT DISTRICT
14TH-15TH / TEXAS AVE.-ELM AVE.
SEWER PLAN & PROFILE



DESIGNED BY: MDY P.E. No. 29912	DATE DRAWN: 03/05/04
REVIEWED BY: MDY P.E. No. 29912	SCALE: HORIZ. 1"=20' VERT. 1"=5'
	ACAD DRAWING NAME:
	PROJECT NUMBER: 04-901
DRAWN BY: GMR	SHEET NUMBER: 21 OF 21



MDY CONSULTING ENGINEERS, INC.
HORIZON PARK PLAZA
743 Horizon Ct., Ste. 311
Grand Junction, CO 81506
PH: (970) 241-2122
FAX: (970) 241-2662



1/27/04

Site Data

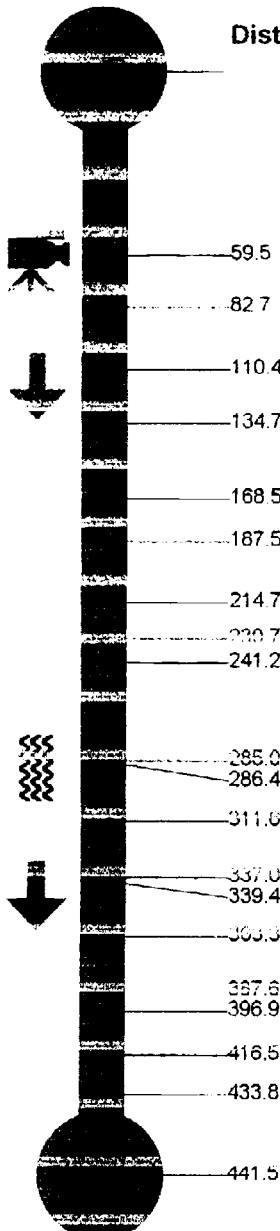
Project Name	Site ID	City	Street	Starting Dist.
D3-261	7	GRAND JUNCTION	260 OURAY AVE	5.0
Date	Time	M.H. Start	M.H. Stop	M.H. Depth
05/06/2004	08:37:47	D3-261-048	D3-261-039	6.11
Type of Pipe	Direction	Surface Condition	Final Dist(ft)	
Clay	Away-0	Paved Asphalt	+0441.5	

3 RD STREET

19 total

Distance Category Category Details Pict 1 Pict 2 Video Comments

EAST 0+00 = 0 M.H. = 5+01 90



59.5	Service Conn.	1 O CLOCK	4+42 ⁴⁰
82.7	Service Conn.	11 O CLOCK	4+19 ²⁰
110.4	Service Conn.	2 O CLOCK	3+91 ⁵⁰
134.7	Service Conn.	10 O CLOCK	3+67 ²⁰
168.5	Service Conn.	10 O CLOCK	3+35 ⁴⁰
187.5	Service Conn.	2 O CLOCK	3+14 ⁴⁰
214.7	Service Conn.	2 O CLOCK	2+87 ²⁰
230.7	Service Conn.	10 O CLOCK	2+71 ²⁰
241.2	Service Conn.	2 O CLOCK	2+60 ²⁰
285.0	Service Conn.	2 O CLOCK	2+16 ²⁰
286.4	Service Conn.	10 O CLOCK	2+15 ²⁰
311.0	Service Conn.	10 O CLOCK	1+90 ²⁰
337.0	Service Conn.	10 O CLOCK	1+64 ²⁰
339.4	Service Conn.	2 O CLOCK	1+62 ²⁰
363.3	Service Conn.	10 O CLOCK	1+38 ²⁰
387.6	Service Conn.	1 O CLOCK	1+14 ²⁰
396.9	Service Conn.	10 O CLOCK	1+05
416.5	Service Conn.	2 O CLOCK	0+85 ⁴⁰
433.8	Service Conn.	11 O CLOCK	0+68 ²⁰

Other MANHOLE

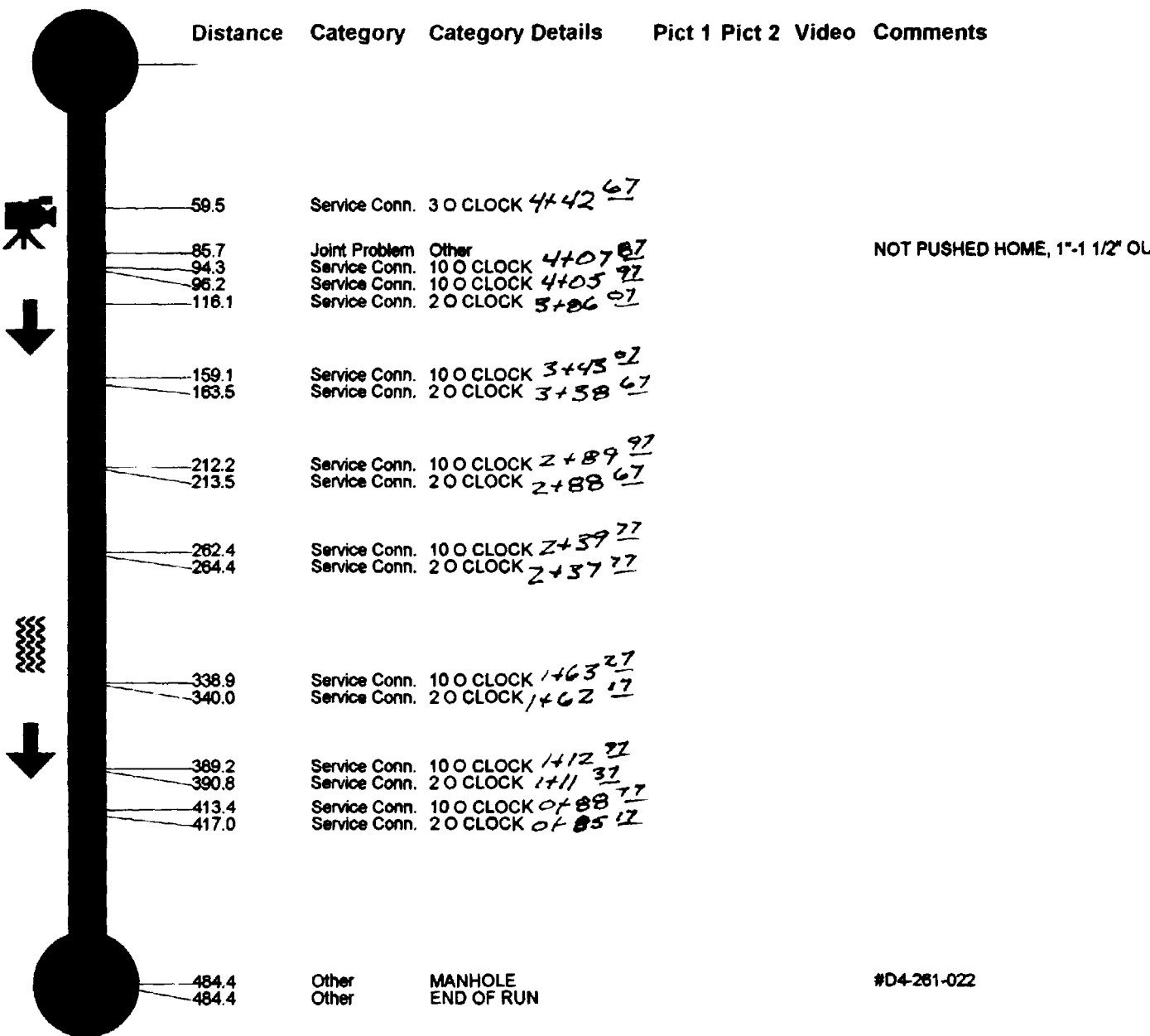
#D3-261-039 (EXISTING)



CUES, Inc.
 3000 Rio Vista Ave.
 Orlando, FL 32805
 (407) 849-0190
 Fax (407) 425-1569

Site Data

Project Name	Site ID	City	Street	Starting Dist.	
D4-261	2	GRAND JUNCTION	261 BELFORD AVE/ BHND	5.0	
Date	Time	M.H. Start	M.H. Stop	M.H. Depth	Pipe Size(in)
05/17/2004	10:42:07	D4-261-042	D4-261-022	6.5	8
Type of Pipe	Direction	Surface Condition		Final Dist(ft)	
PVC	Away-D	Paved Asphalt		+0484.4	



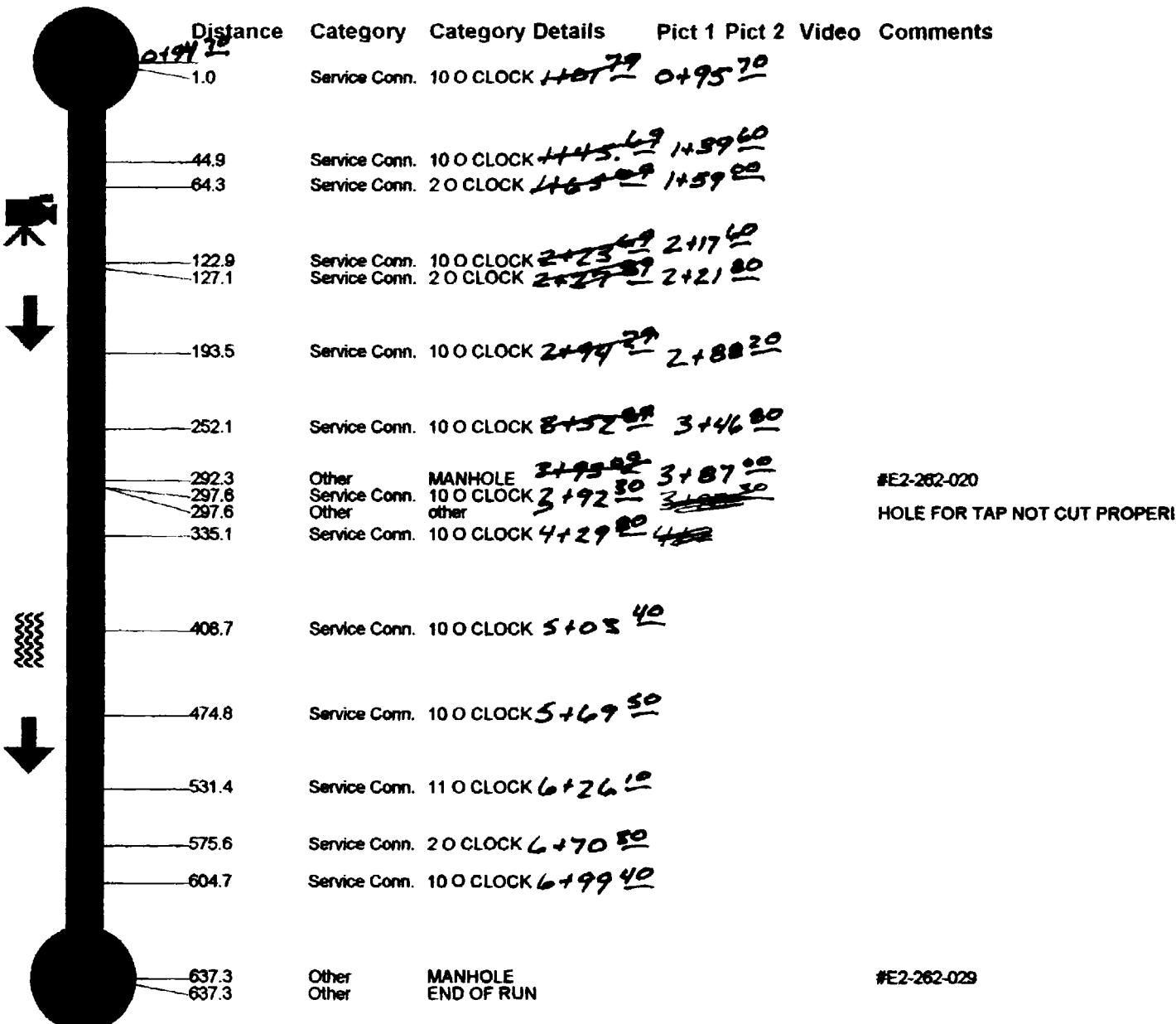


11857-1111-1876
CAMEL

CUES, Inc.
3600 Rio Vista Ave.
Orlando, FL 32805
(407) 849-0190
Fax (407) 425-1569

Site Data

Project Name	Site ID	City	Street	Starting Dist.
E2-262	2	GRAND JUNCTION	1704 N 8TH ST	5.0
Date	Time	M.H. Start	M.H. Stop	M.H. Depth
07/06/2004	12:45:13	E2-262-015	E2-262-029	4.7
Type of Pipe	Direction	Surface Condition		Final Dist(ft)
Clay	Away-D	Dirt ALLEY		+0637.3





CUES, Inc.
 3600 Rio Vista Ave.
 Orlando, FL 32805
 (407) 849-0190
 Fax (407) 425-1569

Site Data

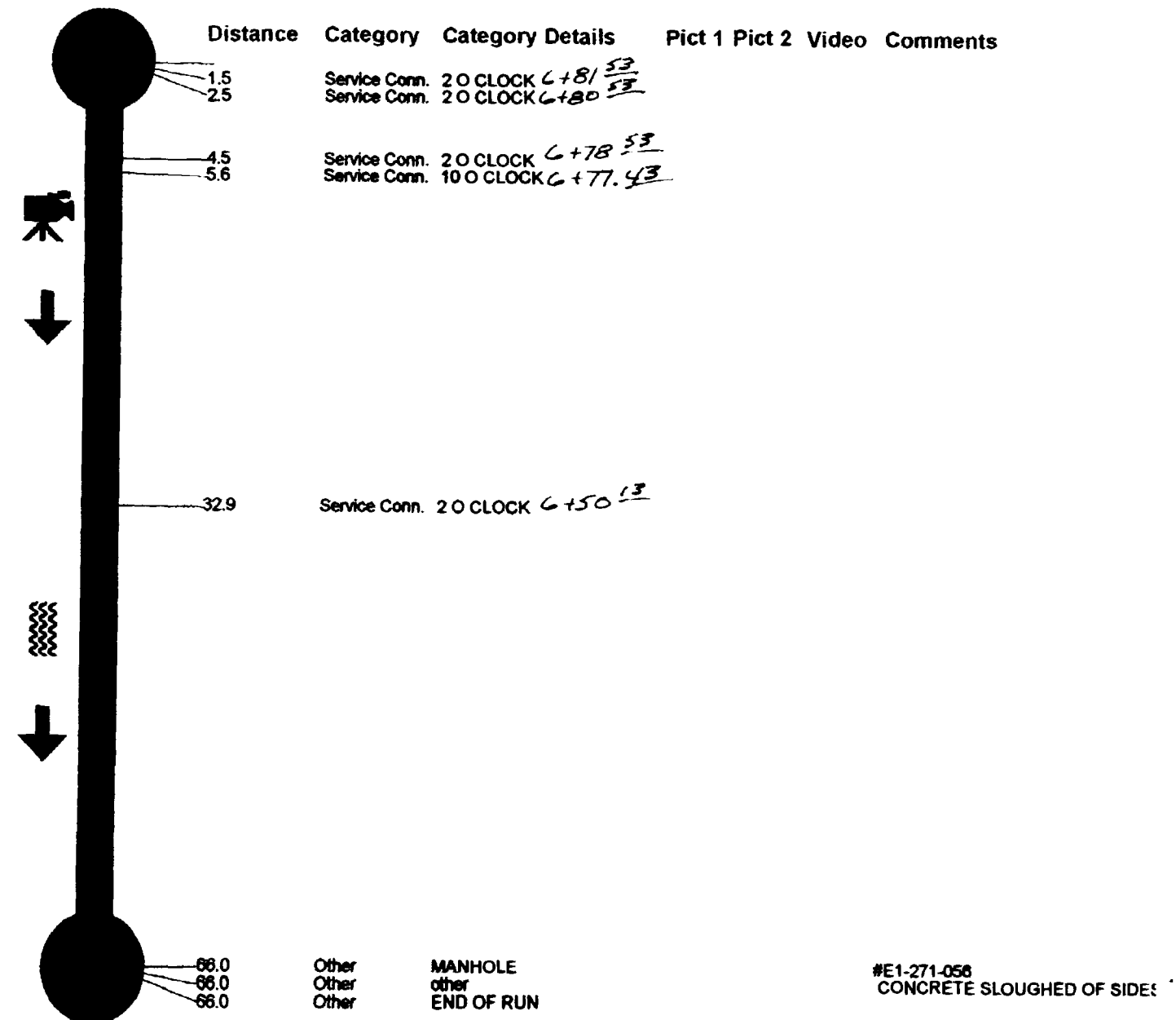
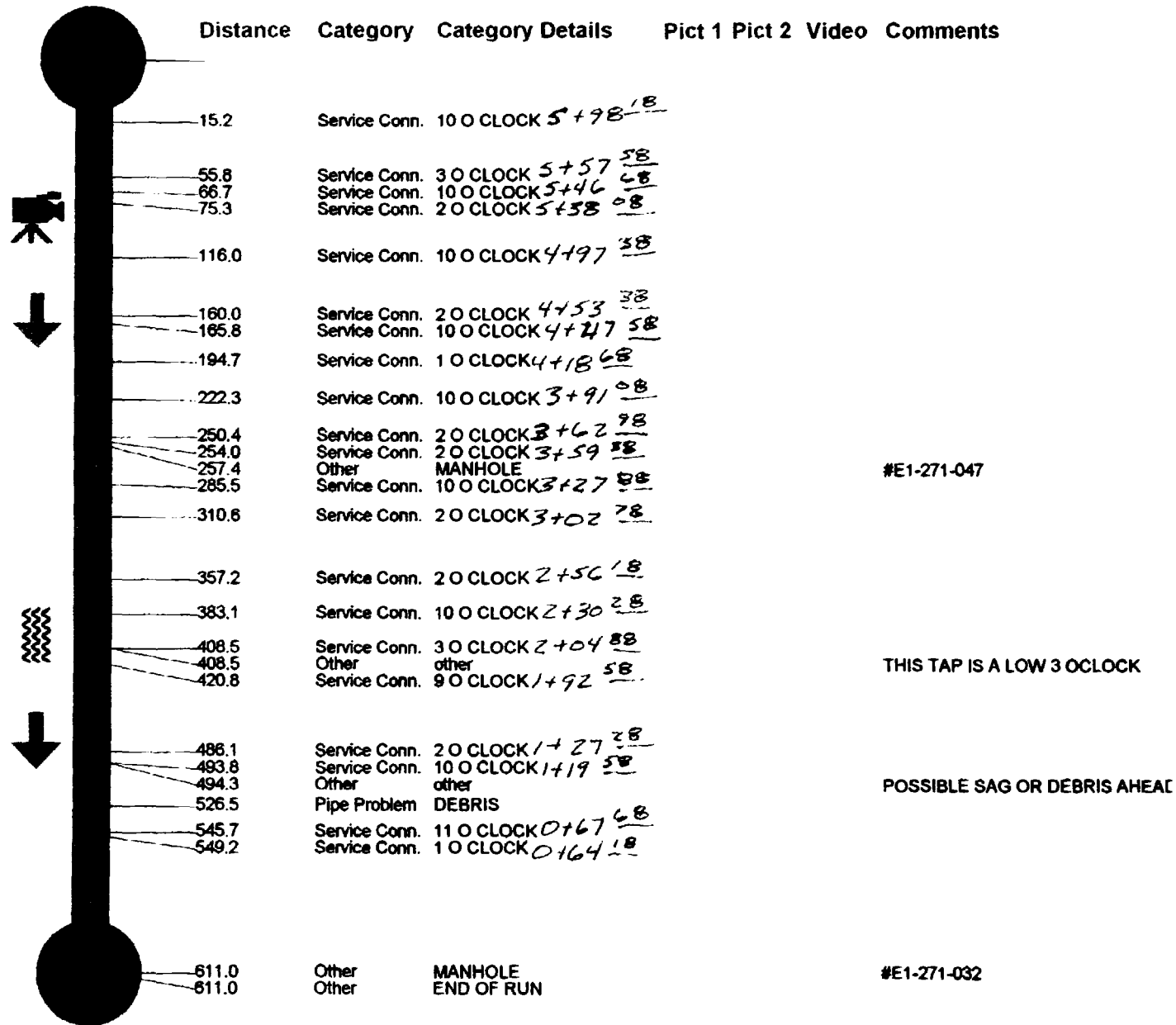
Project Name	Site ID	City	Street	Starting Dist.
E1-271	4	GRAND JUNCTION	1435 ELM ST	5.0
Date	Time	M.H. Start	M.H. Stop	M.H. Depth
06/21/2004	10:37:15	E1-271-056	E1-271-032	6.2
Type of Pipe	Direction	Surface Condition	Final Dist(ft)	
PVC	Away-D	Dirt Road	+0611.0	



CUES, Inc.
 3600 Rio Vista Ave.
 Orlando, FL 32805
 (407) 849-0190
 Fax (407) 425-1569

Site Data

Project Name	Site ID	City	Street	Starting Dist.
E1-271	3	GRAND JUNCTION	1435 ELM ST	5.0
Date	Time	M.H. Start	M.H. Stop	M.H. Depth
06/21/2004	09:59:41	E1-271-059	E1-271-056	6.1
Type of Pipe	Direction	Surface Condition	Final Dist(ft)	
PVC	Away-D	Dirt Road	+0066.0	





14th - 15th
Elm / TEXAS

CUES, Inc.
3600 Rio Vista Ave.
Orlando, FL 32805
(407) 849-0190
Fax (407) 425-1569

Site Data

Project Name	Site ID	City	Street	Starting Dist.
E2-271	7	GRAND JUNCTION	1416 ELM AVE	5.0
Date	Time	M.H. Start	M.H. Stop	M.H. Depth
05/25/2004	08:20:30	E2-271-056	E2-271-069	6.5
Type of Pipe	Direction	Surface Condition	Final Dist(ft)	
PVC	Away-U	Paved Asphalt	+0251.2	

