

CITY OF GRAND JUNCTION ALLEY IMPROVEMENT DISTRICT - 2005

MARCH 7, 2005

- 1 — Cover Sheet
- 2 — Standard Abbreviations, Legend, and Symbols
- 3 — Summary of Approximate Quantities
- 4-10 — Sanitary Sewer Plan & Profiles:
 - 4 - 1st St. & 2nd St. - Ouray Ave. & Chipeta Ave.
 - 5 - 1st St. & 2nd St. - Chipeta Ave. & Gunnison Ave.
 - 6 - 6th St. & 7th St. - Grand Ave. & Ouray Ave.
 - 7 - 9th St. & 10th St. - Rood Ave. & White Ave.
 - 8 - 11th St. & 12th St. - Teller Ave. & Belford Ave.
 - 9 - 18th St. & 19th St. - Ouray Ave. & Chipeta Ave.
 - 10 - 18th St. & 19th St. - Chipeta Ave. & Gunnison Ave.
- 11-12 — Storm Sewer Plan & Profiles:
 - 11 - 18th St. & 19th St. - Ouray Ave. & Chipeta Ave
 - 12 - On Ouray Ave Between Alley and 19th St.
- 13-22 — Alley Plan & Profiles:
 - 13 - 1st St. & 2nd St. - Ouray Ave. & Chipeta Ave.
 - 14 - 6th St. & 7th St. - Grand Ave. & Ouray Ave.
 - 15 - 9th St. & 10th St. - Rood Ave. & White Ave.
 - 16 - 9th St. & 10th St. - Ouray Ave. & Chipeta Ave.
 - 17-18 - 11th St. & 12th St. - Teller Ave. & Belford Ave.
 - 19 - 18th St. & 19th St. - Ouray Ave. & Chipeta Ave.
 - 20 - 18th St. & 19th St. - Chipeta Ave. & Gunnison Ave.
 - 21-22 - 23rd St. & 24th St. - Ouray Ave. & Gunnison Ave.
- 23 — Storm Water Management Plan & Construction Access
- 24 — Typical Sections & Details Sheet

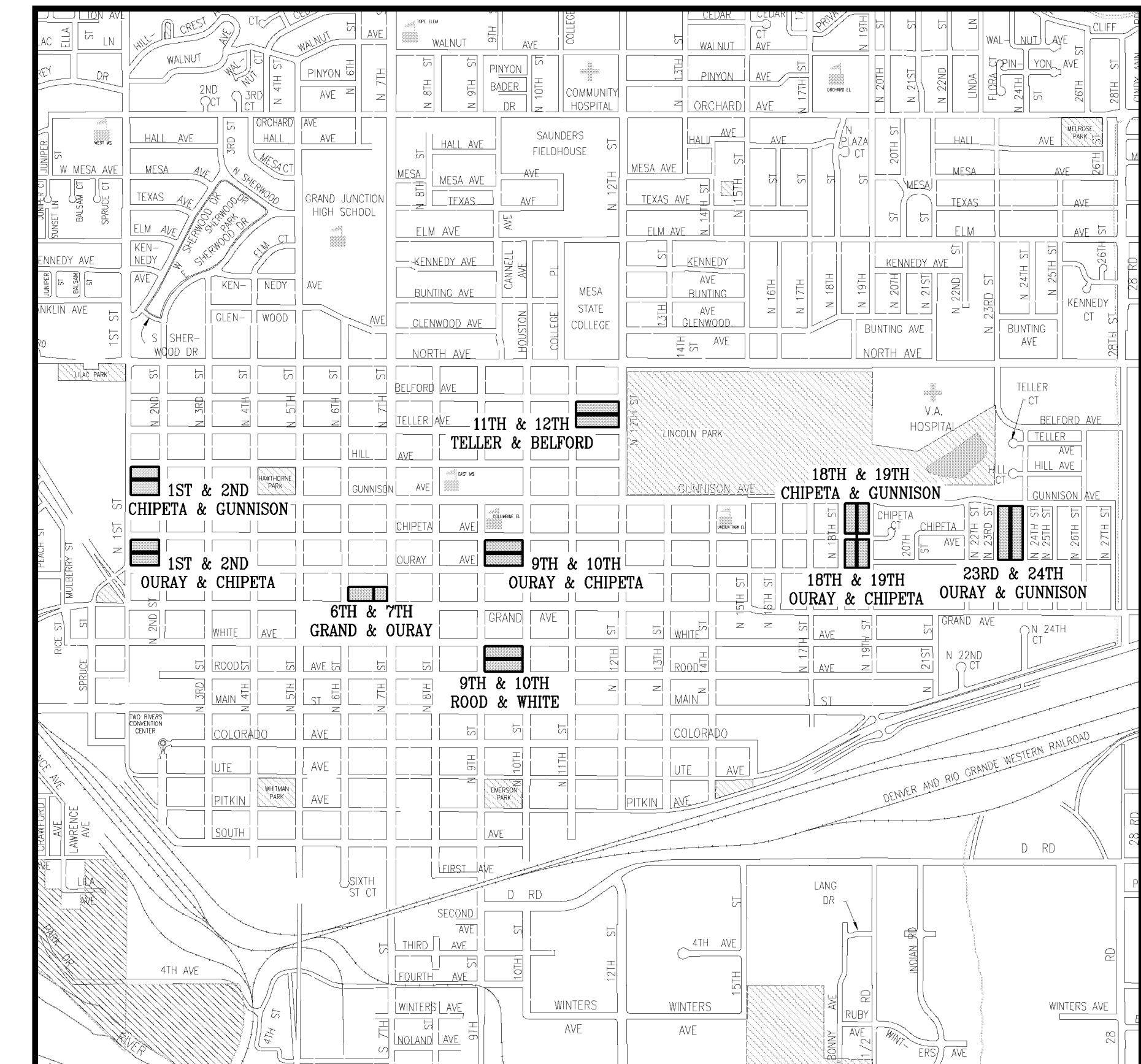
02109300.TIF

~~02109300.TIF~~

03093800.TIF

04128300.TIF

VICINITY MAP



N.T.S.

**AS-BUILT
FEBRUARY, 2006**

UTILITIES AND AGENCIES								
AGENCY	NAME	POSITION	ROLE	MAILING ADDRESS	STREET ADDRESS	CITY, STATE	VOICE-WK	FAX
GRAND JUNCTION, CITY OF	MIKE CURTIS	PROJECT ENGINEER	PROJECT ENGINEER	250 N. 5th STREET	250 N. 5th STREET	GRAND JCT., CO 81501	(970) 256-4004	(970) 256-4022
GRAND JUNCTION, CITY OF	BRET GUILLORY	UTILITY ENGINEER	SANITARY SEWER	250 N. 5th STREET	250 N. 5th STREET	GRAND JCT., CO 81501	(970) 244-1590	(970) 256-4022
GRAND VALLEY IRRIGATION CO.	PHIL BERTRAND		IRRIGATION	688 26 ROAD	688 26 ROAD	GRAND JCT., CO 81506	(970) 242-2762	
BRESNAN	SCOTT WRIGHT		CABLE TV	2502 FORESIGHT CIRCLE	2502 FORESIGHT CIRCLE	GRAND JCT., CO 81504	(970) 986-1211	(970) 245-6803
U.S. WEST/QWEST	TIM HALE	ENGINEER	TELEPHONE	2524 BLICKMAN ROAD	2524 BLICKMAN ROAD	GRAND JCT., CO 81504	(970) 244-4514	(970) 240-4349
UTE WATER	DARYL MOORE	ENGINEER	WATER	PO BOX 460		GRAND JCT., CO 81502	(970) 242-7491	(970) 242-9189
EXCEL	GARY LEWIS	PROJECT MANAGER	GAS, ELECTRIC	2538 BLICKMAN ROAD	2538 BLICKMAN ROAD	GRAND JCT., CO 81504	(970) 244-2698	(970) 244-2661



DRAWING STATUS:	
○	PROGRESS
○	BID SET
○	FINAL CONSTRUCTION DRAWINGS
●	ASBUILT
APPROVED FOR CONSTRUCTION	
CITY OF GRAND JUNCTION	DATE
ACCEPTED AS CONSTRUCTED	
CITY OF GRAND JUNCTION	DATE

Public Works & Utilities, Engineering Division

ABBREVIATIONS

AASHTO	AMERICAN ASSOCIATION OF STATE HIGHWAY & TRANSPORTATION OFFICIALS
ABC	AGGREGATE BASE COURSE
AC	ASBESTOS CEMENT
AP	ANGLE POINT
ASB	ANCHORED STRAW BALES
ASP	ALUMINIZED STEEL PIPE
ASTM	AMERICAN SOCIETY FOR TESTING MATERIALS
AWWA	AMERICAN WATER WORKS ASSOCIATION
BC	BACK OF CURB
BF	BUTTERFLY VALVE
BOW	BACK OF WALK
BCR	BEGIN CURB RETURN
BOT	BOTTOM
BSWMP	BETTER STORM WATER MANAGEMENT PRACTICES
CH	CHORD
CAP	CORRUGATED ALUMINUM PIPE
CDOT	COLORADO DEPARTMENT OF TRANSPORTATION
CI	CAST IRON
C,G,& SW	CURB, GUTTER & SIDEWALK
C	CENTER LINE
CL	CLEAR
CMP	CORRUGATED METAL PIPE
CO	CLEAN OUT
COMB	COMBINATION (AS IN STORM SEWER AND SANITARY SEWER)
CONC	CONCRETE
CSM	CITY SURVEY MONUMENT
CSP	CORRUGATED STEEL PIPE
CU	COPPER
DI	DUCTILE IRON
DWY	DRIVEWAY
E	ELECTRIC
ECR	END CURB RETURN
EG	EDGE OF GUTTER
EL	ELEVATION
EP	EDGE OF PAVEMENT
EX	EXISTING
FB	FULL BODY
FC	FACE OF CURB
FG	FINISHED GRADE
FL	FLOW LINE
FL	FLANGE
FM	FORCE MAIN
FO	FIBER OPTICS
FS	FAR SIDE
FTG	FOOTING
G	GAS
GB	GRADE BREAK
GM	GAS METER
GV	GATE VALVE
HBP	HOT BITUMINOUS PAVEMENT
HDPE	HIGH DENSITY POLYETHYLENE
INV	INVERT
IRR	IRRIGATION
L	LENGTH OF ARC
LC	LONG CHORD
LF	LINEAR FEET
LL	LONG ARC
LS	SHORT ARC
LT	LEFT
MB	MAILBOX
MCSM	MESA COUNTY SURVEY MONUMENT
MH	MANHOLE
MJ	MECHANICAL JOINT
MW	MILL WRAP
N/A	NOT APPLICABLE
NIC	NOT IN CONTRACT
NOP	NO ONE PERSON
NRCP	NON-REINFORCED CONCRETE PIPE
NS	NEAR SIDE
NTS	NOT TO SCALE
OHP	OVERHEAD POWER
OHT	OVERHEAD TELEPHONE
PC	POINT OF CURVATURE
PCC	POINT OF COMPOUND CURVATURE
PE	POLYETHYLENE
PERF	PERFORATED
PI	POINT OF INTERSECTION
PIP	PLASTIC IRRIGATION PIPE
POC	POINT ON CURVE
POT	POINT ON TANGENT
PR	PROPOSED
PRC	POINT OF REVERSE CURVATURE
PT	POINT OF TANGENCY
PVC	POLYVINYL CHLORIDE
R	RADIUS
RCP	REINFORCED CONCRETE PIPE
REQ'D	REQUIRED
RG	RESTRAINED GLANDS
RL	LONG RADIUS
ROW	RIGHT OF WAY
RP	RADIUS POINT
RR	RAIL ROAD
RS	SHORT RADIUS
RT	RIGHT
S	SLOPE
SAN	SANITARY
SC	SHORT CHORD
SCD	STANDARD CONTRACT DOCUMENTS
SCH	SCHEDULE
SF	SILT FENCE
SL	SECTION LINE
SSRB	STANDARD SPECIFICATIONS FOR ROAD & BRIDGE CONSTRUCTION
SSUJ	STANDARD SPECIFICATIONS FOR CONSTRUCTION OF UNDERGROUND UTILITIES
STA	STATION
STL	STEEL
STM	STORM
T	TELEPHONE
TAN	LENGTH OF TANGENT
TC	TOP OF CURB
TH	TEST HOLE
TV	TELEVISION
(TYP)	TYPICAL
UU	UNDERGROUND UTILITIES
VC	VERTICAL CURVE
VCP	VITRIFIED CLAY PIPE
VPC	VERTICAL POINT OF CURVATURE
VPCC	VERTICAL POINT OF COMPOUND CURVATURE
VPRC	VERTICAL POINT OF REVERSE CURVATURE
VPI	VERTICAL POINT OF INTERSECTION
VPT	VERTICAL POINT OF TANGENCY
W	WATER
Δ	DELTA ANGLE

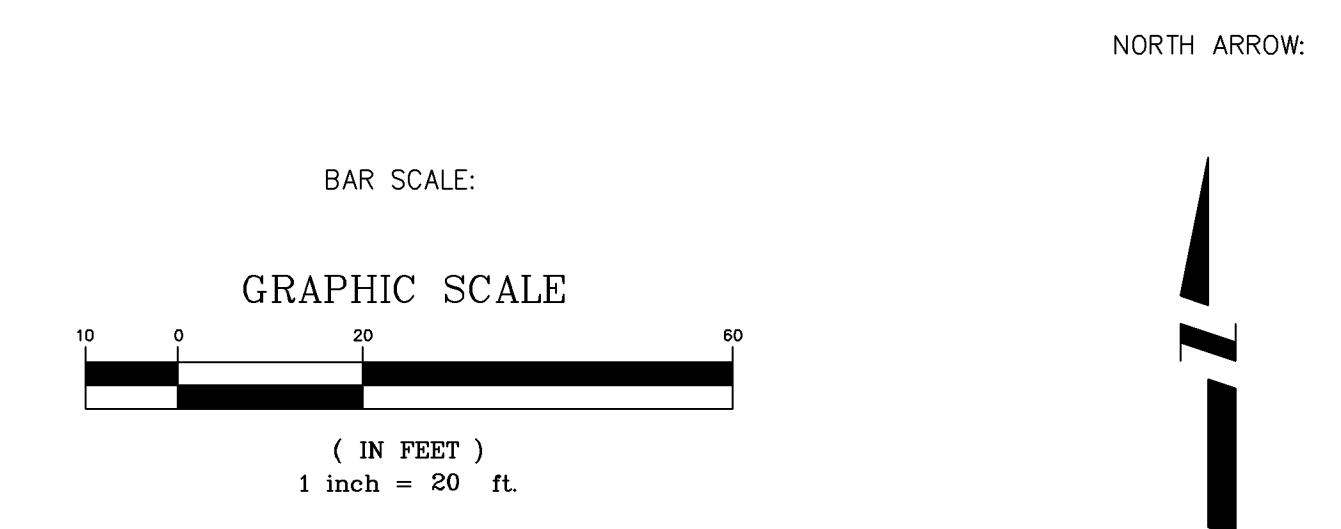
LEGEND

BSWMP	-----
DRAINAGE BASIN BOUNDARY	-----
BSWMP	ASB ASB ASB ASB ASB ASB ASB ASB
ANCHORED STRAW BALES	-----
BSWMP	SF SF SF SF SF SF SF SF
SILT FENCE	-----
BUILDING	
CONCRETE CURB AND GUTTER	
CONCRETE CURB, GUTTER, & SIDEWALK	
CONCRETE DITCH	
CONCRETE SIDEWALK	
CULVERT	
EARTH DITCH	
EDGE OF GRAVEL	-----
EDGE OF PAVEMENT	-----
FENCE (BARBED WIRE)	-----
FENCE (CHAIN LINK)	-----
FENCE (IRON)	-----
FENCE (PLASTIC)	-----
FENCE (WOOD)	-----
FENCE (WOVEN WIRE)	-----
GUARD RAIL	-----
HATCHING: INDICATES ASPHALT REMOVAL	
HATCHING: INDICATES CONCRETE REMOVAL	
HATCHING: INDICATES STAGING AREA	
LINE (CENTER OF IMPROVEMENTS)	-----
LINE (CITY LIMITS)	-----
LINE (CONTROL)	-----
LINE (EASEMENT)	-----
LINE (MONUMENT/SECTION)	-----
LINE (PROPERTY)	-----
LINE (RIGHT OF WAY)	-----
MATCH LINE	MATCH LINE SEE SHEET NO ?
PIPE (IRRIGATION)	
PIPE (SIPHON)	

PROPOSED CONCRETE CURB AND GUTTER	
PROPOSED CONCRETE CURB, GUTTER, & SIDEWALK	
PROPOSED CONCRETE SIDEWALK	
PROPOSED "WET" UTILITIES (CONSTRUCTION NOTE WILL INDICATE TYPE, SIZE, AND MATERIAL OF NEW MAIN)	
ALL PROPOSED FEATURES NOT SHOWN IN LEGEND WILL BE SHOWN THE SAME AS THEIR EXISTING COUNTERPART, BUT INDICATED BY BOLDER LINETYPE	
RAIL ROAD	
RETAINING WALL	
STRIPING (CONTINUOUS WHITE)	
STRIPING (DASHED WHITE)	
STRIPING (CONTINUOUS YELLOW)	
STRIPING (DASHED YELLOW)	
TOP OF SLOPE	
CONTOUR LINES (SHOWN BETWEEN TOP & TOE)	
TOE OF SLOPE	
TRAFFIC DETECTOR LOOP	
UTILITY LINE (ABANDON) (THIS CASE A WATER LINE)	
UTILITY LINE (CABLE TV)	
UTILITY LINE (ELECTRIC)	
UTILITY LINE (FIBER OPTIC)	
UTILITY LINE (GAS)	
UTILITY LINE (HIGH VOLTAGE OVERHEAD POWER)	
UTILITY LINE (OVERHEAD POWER)	
UTILITY LINE (OVERHEAD TELEPHONE)	
UTILITY LINE (SANITARY SEWER)	
UTILITY LINE (SANITARY SEWER FORCE MAIN)	
UTILITY LINE (SANITARY SEWER SERVICE)	
UTILITY LINE (STORM SEWER)	
UTILITY LINE (STORM SEWER, PERFORATED)	
UTILITY LINE (STORM/SANITARY SEWER SEWER COMBINATION)	
UTILITY LINE (TELEPHONE)	
UTILITY LINE (WATER)	

SYMBOLS

BENCH MARK	
CATCH BASIN	
CLEAN OUT	
CURB STOP	
FIRE HYDRANT	
GUY WIRE ANCHOR	
HEADGATE	
IRRIGATION PUMP	
MAILBOX	
MANHOLE (ELECTRIC)	
MANHOLE (GAS)	
MANHOLE (SANITARY/STORM)	
MANHOLE (TELEPHONE)	
MANHOLE (TV)	
MANHOLE (WATER)	
METER (GAS)	
METER (WATER)	
PEDESTAL (TELEPHONE)	
PEDESTAL (TV)	
PROPERTY PIN	
PULL BOX	
REDUCER FITTING	
SIGN OR POST (SIGN TYPE NOTED)	
SPRINKLER HEAD	
STREET LIGHT	
SURVEY MONUMENT (CITY)	
SURVEY MONUMENT (TYPE NOTED)	
TEST HOLE	
TRAFFIC PAINT MARKING	
TRAFFIC SIGNAL POLE AND MAST ARM	
UTILITY POLE	
VALVE (GAS)	
VALVE (IRRIGATION)	
VALVE (WATER)	
VEGETATION (HEDGE OR BUSH)	
VEGETATION (TREE STUMP)	
VEGETATION (TREE) (CALIPER SIZE NOTED)	
WATER HYDRANT	
WEIR	
YARD LIGHT	



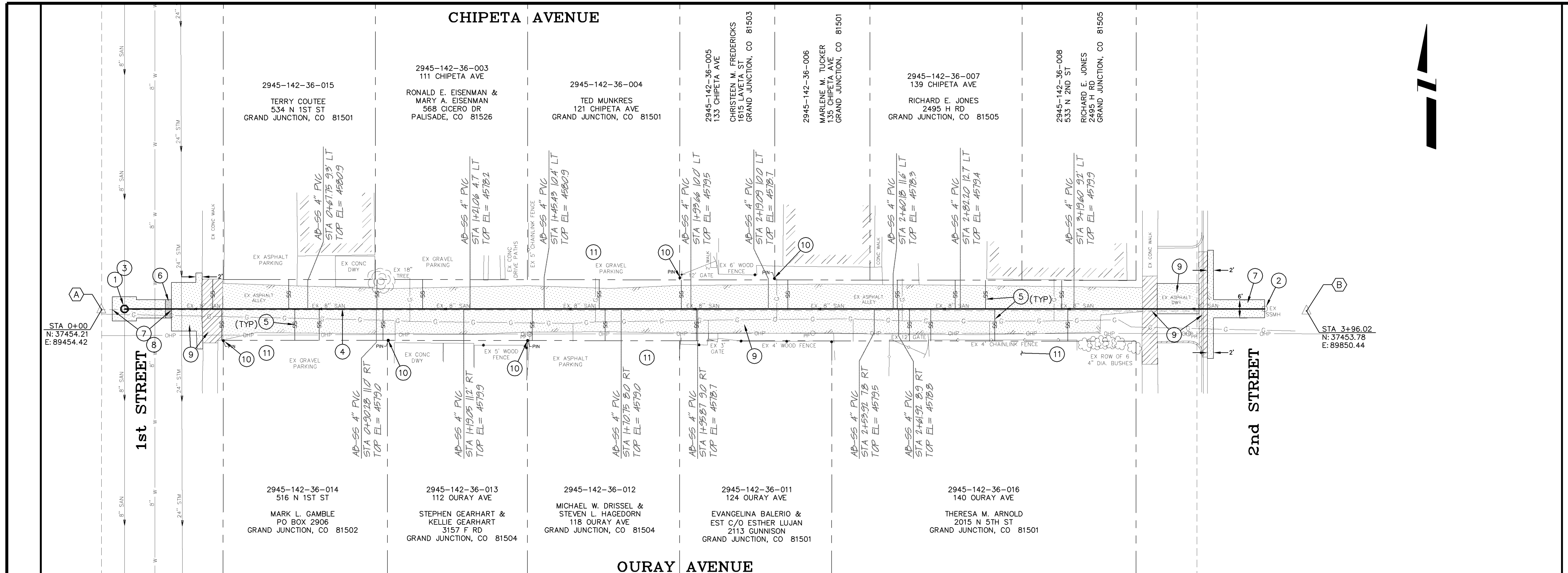
REVISION Δ	DESCRIPTION	DATE	DRAWN BY	JCS	DATE	4-02
REVISION Δ			DESIGNED BY		DATE	
REVISION Δ			CHECKED BY		DATE	
REVISION Δ			APPROVED BY		DATE	

SCALE	
PLAN	PROFILE
HORIZ. 1"=20'	HORIZ. _____
VERT. _____	VERT. _____



PUBLIC WORKS AND UTILITIES ENGINEERING DIVISION

CITY OF GRAND JUNCTION STANDARD ABBREVIATIONS, LEGEND, AND SYMBOLS SHEET



PROJECT NO. 2011-F00708

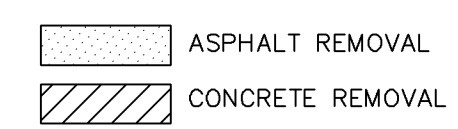
HORIZONTAL CONTROL DATA

CONTROL POINTS

(A) SET PK NAIL @ INTERSECTION OF CENTERLINE OF E/W ALLEY AND MONUMENT LINE OF NORTH 1ST STREET. TBM ELEV. = 4583.11

(B) SET PK NAIL CENTERLINE OF E/W ALLEY (STA 3+96.02). EAST SIDE OF NORTH 2ND STREET. TBM ELEV. = 4583.59

- CONSTRUCTION NOTES
- 102.11/202 - REMOVE EXISTING MH. INSTALL NEW 48" DIA. SANITARY SEWER MANHOLE (SEE CITY OF GRAND JUNCTION STANDARD DETAIL SS-02).
 - 210.00 - CONNECT NEW 8" SDR-35 PVC PIPE TO EXISTING MH PER CITY OF GRAND JUNCTION STANDARD DETAIL SS-08.
 - BYPASS PUMPING WILL BE REQUIRED TO CONSTRUCT THIS MH.
 - 102.9a - INSTALL NEW 8" SDR-35 PVC PIPE, BACKFILL TRENCH WITH IMPORTED MATERIALS MEETING CITY SPECIFICATION 103.16.
 - 102/103/104 - CONTRACTOR SHALL FIELD VERIFY EXISTING SEWER SERVICE LOCATION AND INSTALL NEW 4" SEWER SERVICE TAP AND NEW 4" SDR-35 PVC PIPE, INCLUDING ALL BENDS AND FITTINGS, TO ROW LINE AND CONNECT TO EXISTING SERVICE. (SEE CITY OF GRAND JUNCTION STANDARD DETAIL "TYPICAL SERVICE "Y" CONNECTION" SS-06). (TYP)
 - 102.11 - CLAY CUT OFF WALL SHALL BE PLACED 10' UPSTREAM OF MH, AND SHALL EXTEND 6" ABOVE AND 6" BELOW SEWER PIPE. THE CONTRACT UNIT PRICE FOR GRAVITY SEWER PIPE SHALL INCLUDE THE COST OF CUTOFF WALLS.
 - 103.3 - CUT AND REMOVE PAVEMENT AS SHOWN (INDICATED BY DOT HATCH PATTERN). TYPICAL WIDTH TO INSTALL MANHOLES WILL BE 8' CENTERED ON THE MANHOLE AND SQUARED OFF AS SHOWN. FOR MAIN LINE REMOVAL WIDTH WILL BE 6' MAXIMUM FOR PATCH AND CENTERED ON THE PIPE. SERVICE TRENCH WIDTH SHALL BE 6' MAXIMUM.
 - CONTRACTOR SHALL BACKFILL TRENCH AND REPLACE ASPHALT PATCH AFTER INSTALLING SEWER MH AND PIPE. BACKFILL TRENCH WITH IMPORTED MATERIALS MEETING CITY SPECIFICATIONS 103.16 AND PATCH PAVEMENT WITH A 3" THICK HOT BITUMINOUS PAVEMENT (GRADING SX) OVER A 6" THICK AGGREGATE BASE COURSE (CLASS 6) MEETING CITY SPECIFICATIONS 103.18.
 - SEE "ALLEY PLAN & PROFILE" SHEET #13, FOR PAVEMENT REMOVAL AND REPLACEMENT REQUIREMENTS.
 - 629 - PROTECT SURVEY MONUMENT, PROPERTY PIN, OR OTHER "CONTROL POINT" OF A PERMANENT NATURE. IF DISTURBED, IT MUST BE RESET BY A SURVEYOR LICENSED IN THE STATE OF COLORADO AT THE CONTRACTOR'S EXPENSE. (TYP)
 - CONTRACTOR IS RESPONSIBLE FOR REPAIR COSTS ASSOCIATED WITH ANY/ALL DAMAGE TO PRIVATE PROPERTY BEHIND RIGHT-OF-WAY LINES AND OUTSIDE OF EASEMENT LINES.

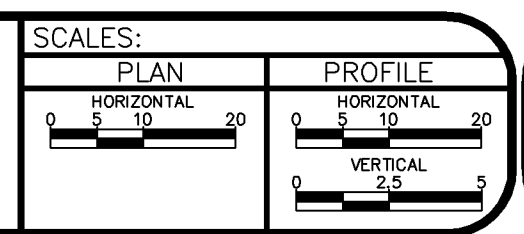


AS-BUILT

NOTE: NOTIFY AFFECTED UTILITY VENDOR 48 HOURS PRIOR TO EXCAVATIONS THAT WILL EXPOSE UTILITY LINES. THE COVER SHEET WILL HAVE A LISTING OF UTILITY VENDORS AND TELEPHONE NUMBERS.

REVISION	DESCRIPTION	DATE
REVISION Δ	AS-BUILT DRAWINGS	FEB. 2006
REVISION Δ		
REVISION Δ		
REVISION Δ		

DRAWN BY	TLT	DATE	2005
DESIGNED BY	MG	DATE	2005
CHECKED BY		DATE	
APPROVED BY		DATE	



PUBLIC WORKS AND UTILITIES ENGINEERING DIVISION

ALLEY IMPROVEMENT DISTRICT - 2005
1st & 2nd - OURAY AVE. & CHIPETA AVE.
SANITARY SEWER PLAN AND PROFILE
STA 0+00 TO STA 3+82.30

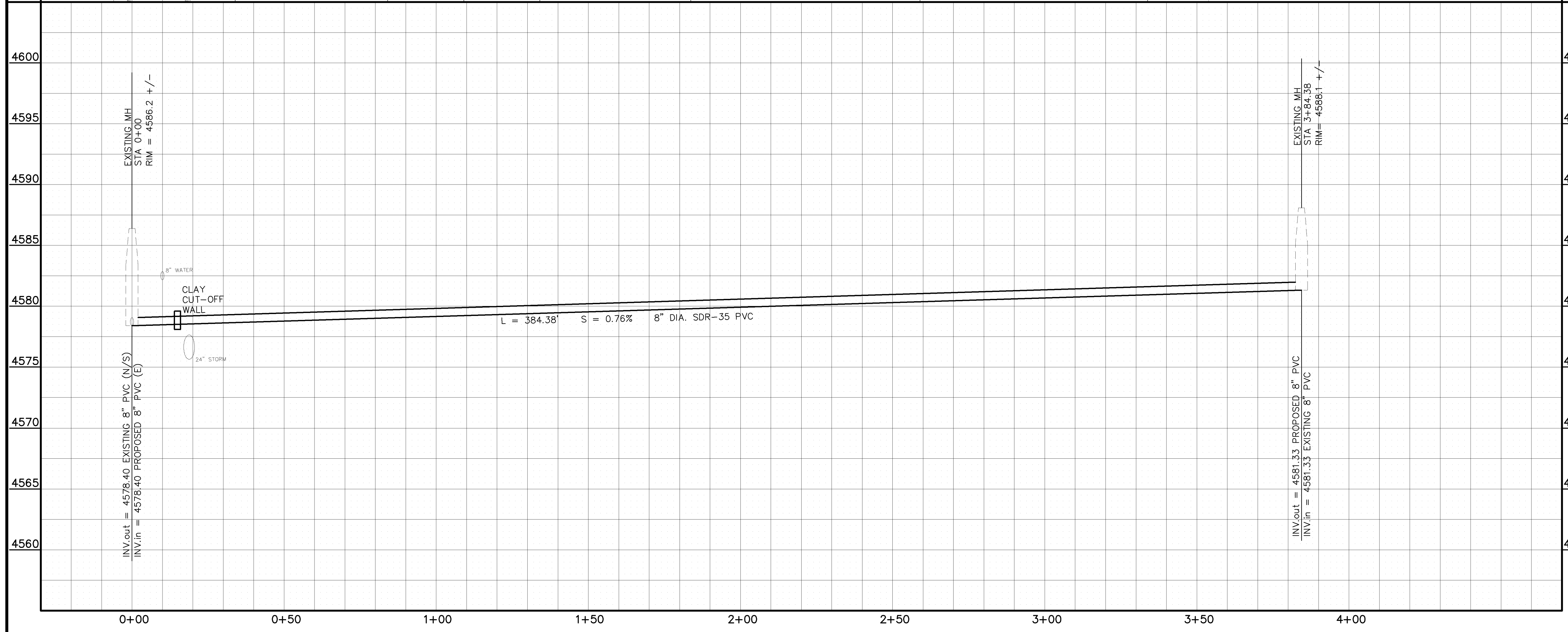
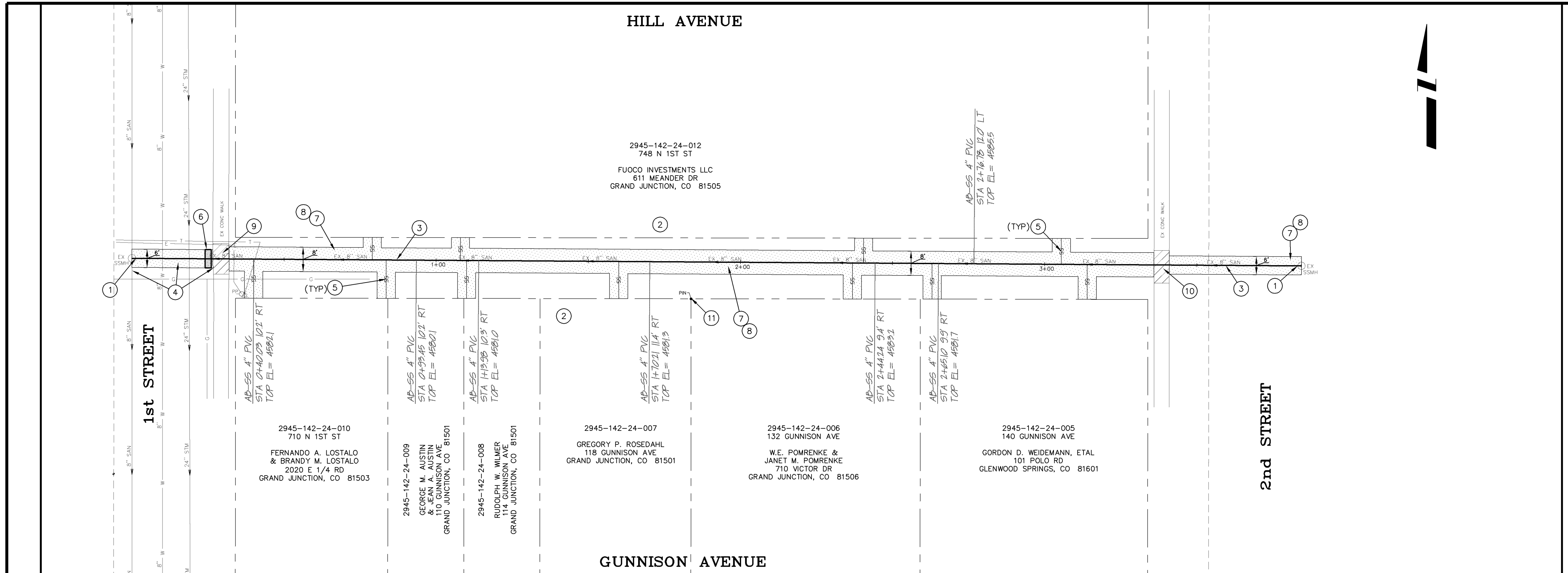
CONSTRUCTION NOTES

- 1 210.00 - CONNECT NEW 8" PVC PIPE TO EXISTING MH PER CITY OF GRAND JUNCTION STANDARD DETAIL SS-08.
- 2 CONTRACTOR IS RESPONSIBLE FOR REPAIR COSTS ASSOCIATED WITH ANY/DAMAGE TO PRIVATE PROPERTY BEHIND RIGHT-OF-WAY LINES AND OUTSIDE OF EASEMENT LINES.
- 3 102.90A - INSTALL NEW 8" PVC PIPE, SDR-35, BACKFILL TRENCH WITH IMPORTED MATERIALS MEETING CITY SPECIFICATION 103.16.
- 4 CONTRACTOR SHALL BACKFILL TRENCH AND REPLACE ASPHALT PATCH AFTER INSTALLING SEWER MH AND PIPE. BACKFILL TRENCH WITH IMPORTED MATERIALS MEETING CITY SPECIFICATIONS 103.16 AND PATCH PAVEMENT WITH A 3" THICK HOT BITUMINOUS PAVEMENT (GRADING SX) OVER A 6" THICK AGGREGATE BASE COURSE (CLASS 6) MEETING CITY SPECIFICATIONS 103.18.
- 5 102/103/104 - CONTRACTOR SHALL FIELD VERIFY EXISTING SEWER SERVICE LOCATION AND INSTALL NEW 4" SEWER SERVICE TAP AND 4" SEWER PIPE (SDR-35 PVC), INCLUDING ALL BENDS AND FITTINGS, TO ROW LINE AND CONNECT TO EXISTING SERVICE. (SEE CITY OF GRAND JUNCTION STANDARD DETAIL "TYPICAL SERVICE "Y" CONNECTION" SS-06). (TYP)
- 6 102.11 - CLAY CUT OFF WALL SHALL BE PLACED 10' UPSTREAM OF MH, AND SHALL EXTEND 6" ABOVE AND 6" BELOW SEWER PIPE. THE CONTRACT UNIT PRICE FOR GRAVITY SEWER PIPE SHALL INCLUDE THE COST OF CUTOFF WALLS.
- 7 103.3 - CUT AND REMOVE PAVEMENT AS SHOWN (INDICATED BY DOT HATCH PATTERN). SERVICE TRENCH WIDTH SHALL BE 8' MAXIMUM.
- 8 103.16 - PATCH PAVEMENT WITH A 3" THICK HOT BITUMINOUS PAVEMENT (GRADING SX) OVER A 6" THICK AGGREGATE BASE COURSE (CLASS 6) MEETING CITY SPECIFICATIONS.
- 9 REMOVE CONC SIDEWALK TO FIRST JOINT BEYOND TRENCH. REPLACE WITH 3" ASPHALT PATCH.
- 10 REMOVE CONC SIDEWALK TO FIRST JOINT BEYOND TRENCH. REPLACE PER CITY OF GRAND JUNCTION STANDARD CONCRETE DETAIL, C-01 (GENERAL NOTES).
- 11 629 - PROTECT SURVEY MONUMENT, PROPERTY PIN, OR OTHER "CONTROL POINT" OF A PERMANENT NATURE. IF DISTURBED, IT MUST BE RESET BY A SURVEYOR LICENSED IN THE STATE OF COLORADO AT THE CONTRACTOR'S EXPENSE. (TYP)

ASPHALT REMOVAL
CONCRETE REMOVAL

AS-BUILT

NOTE: NOTIFY AFFECTED UTILITY VENDOR 48 HOURS PRIOR TO EXCAVATIONS THAT WILL EXPOSE UTILITY LINES. THE COVER SHEET WILL HAVE A LISTING OF UTILITY VENDORS AND TELEPHONE NUMBERS.



REVISION	DESCRIPTION	DATE
1	AS-BUILT DRAWINGS	FEB. 2006

DRAWN BY	TLT	DATE	2005
DESIGNED BY	MG	DATE	2005
CHECKED BY		DATE	
APPROVED BY		DATE	

SCALES:	
PLAN	PROFILE
HORIZONTAL	HORIZONTAL
1" = 20'	1" = 20'
VERTICAL	VERTICAL
1" = 2.5'	1" = 2.5'



PUBLIC WORKS AND UTILITIES ENGINEERING DIVISION

**ALLEY IMPROVEMENT DISTRICT - 2005
1st & 2nd - GUNNISON AVE. & HILL AVE.
SANITARY SEWER PLAN AND PROFILE
STA 0+00 TO STA 3+84.38**

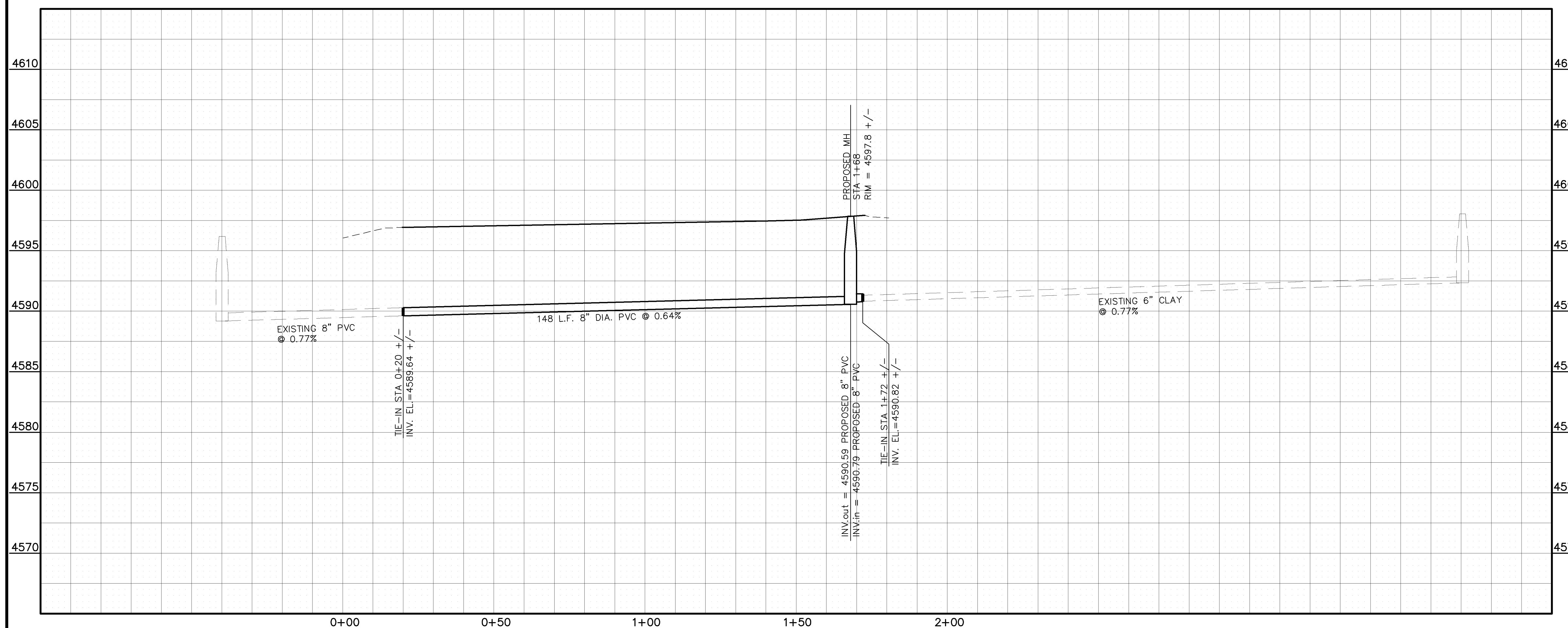
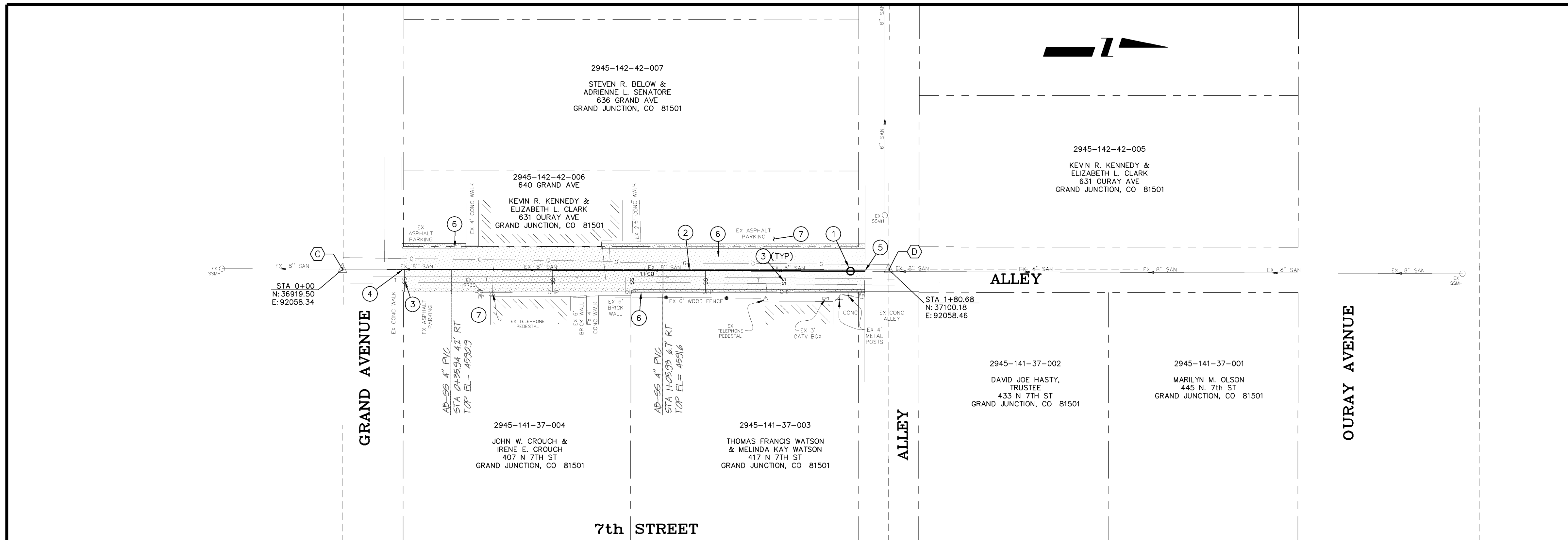
CONTROL POINTS

- (C) CHISELED "X" @ INTERSECTION OF CENTERLINE OF N/S ALLEY AND MONUMENT LINE OF GRAND AVE.
TBM ELEV.= 4596.04
- (D) CHISELED "X" @ CL/CL OF N/S AND E/W ALLEYS
TBM ELEV.= 4597.71

CONSTRUCTION NOTES

- 1 102.11 - INSTALL NEW 48" DIA. SANITARY SEWER MANHOLE (SEE CITY OF GRAND JUNCTION STANDARD DETAIL SS-02).
- 2 102.90A - INSTALL NEW 8" PVC PIPE, SDR-35, BACKFILL TRENCH WITH IMPORTED MATERIALS MEETING CITY SPECIFICATION 103.16.
- 3 102/103/104 - CONTRACTOR SHALL FIELD VERIFY EXISTING SEWER SERVICE LOCATION AND INSTALL NEW 4" SEWER SERVICE TAP AND 4" SEWER PIPE (SDR-35 PVC), INCLUDING ALL BENDS AND FITTINGS, TO ROW LINE AND CONNECT TO EXISTING SERVICE. (SEE CITY OF GRAND JUNCTION STANDARD DETAIL "TYPICAL SERVICE "Y" CONNECTION" SS-06). (TYP)
- 4 CONTRACTOR SHALL FIELD LOCATE EXISTING SANITARY SEWER LINE AT BACK OF WALK AND TIE NEW 8" PVC LINE INTO EXISTING 8" PVC LINE USING SOLID SLEEVE COUPLING (CONCRETE ENCASED).
- 5 CONTRACTOR SHALL EXTEND NEW 8" PVC BEYOND NEW MANHOLE AND TIE NEW 8" PVC INTO EXISTING 6" CLAY PIPE USING PVC TO CLAY CAULDER COUPLING (CONCRETE ENCASED).
- 6 SEE "ALLEY PLAN & PROFILE" SHEET #14 FOR PAVEMENT REPLACEMENT REQUIREMENTS.
- 7 CONTRACTOR IS RESPONSIBLE FOR REPAIR COSTS ASSOCIATED WITH ANY/ALL DAMAGE TO PRIVATE PROPERTY BEHIND RIGHT-OF-WAY LINES AND OUTSIDE OF EASEMENT LINES.

ASPHALT REMOVAL



AS-BUILT

NOTE: NOTIFY AFFECTED UTILITY VENDOR 48 HOURS PRIOR TO EXCAVATIONS THAT WILL EXPOSE UTILITY LINES. THE COVER SHEET WILL HAVE A LISTING OF UTILITY VENDORS AND TELEPHONE NUMBERS.

REVISION	DESCRIPTION	DATE
1	ASBUILT DRAWINGS	FEB. 2006

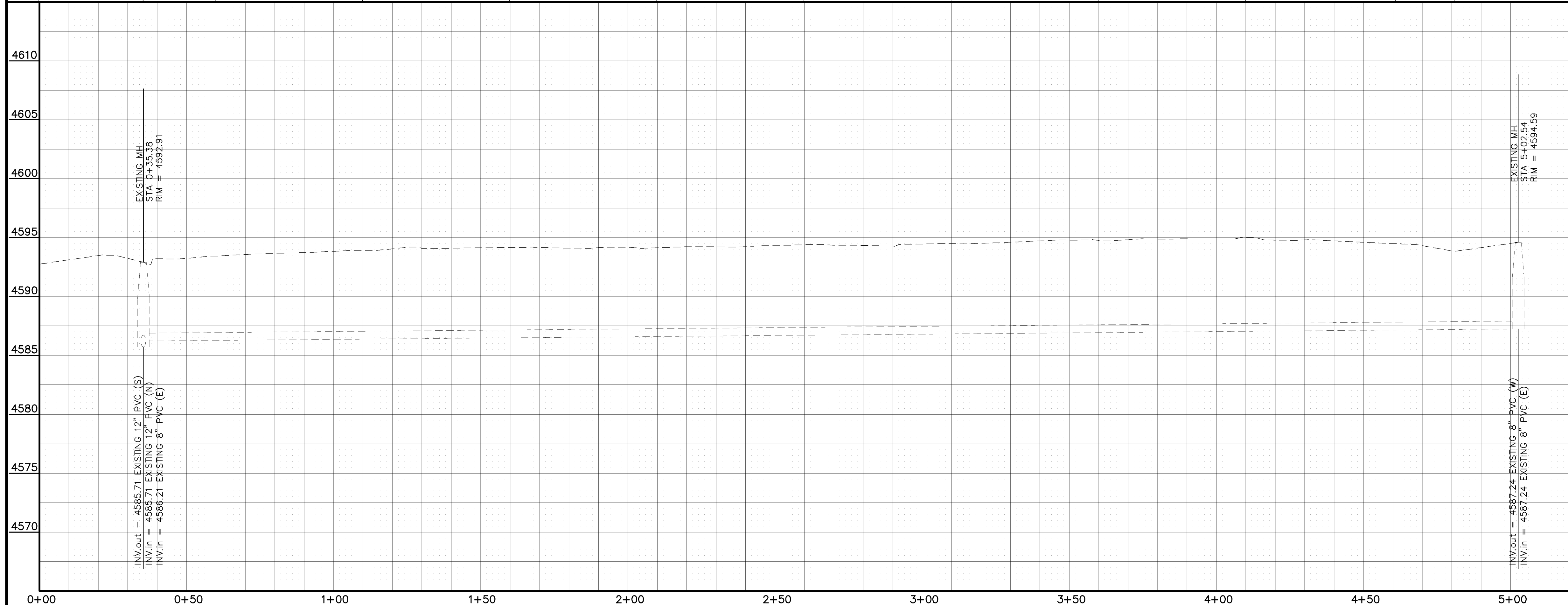
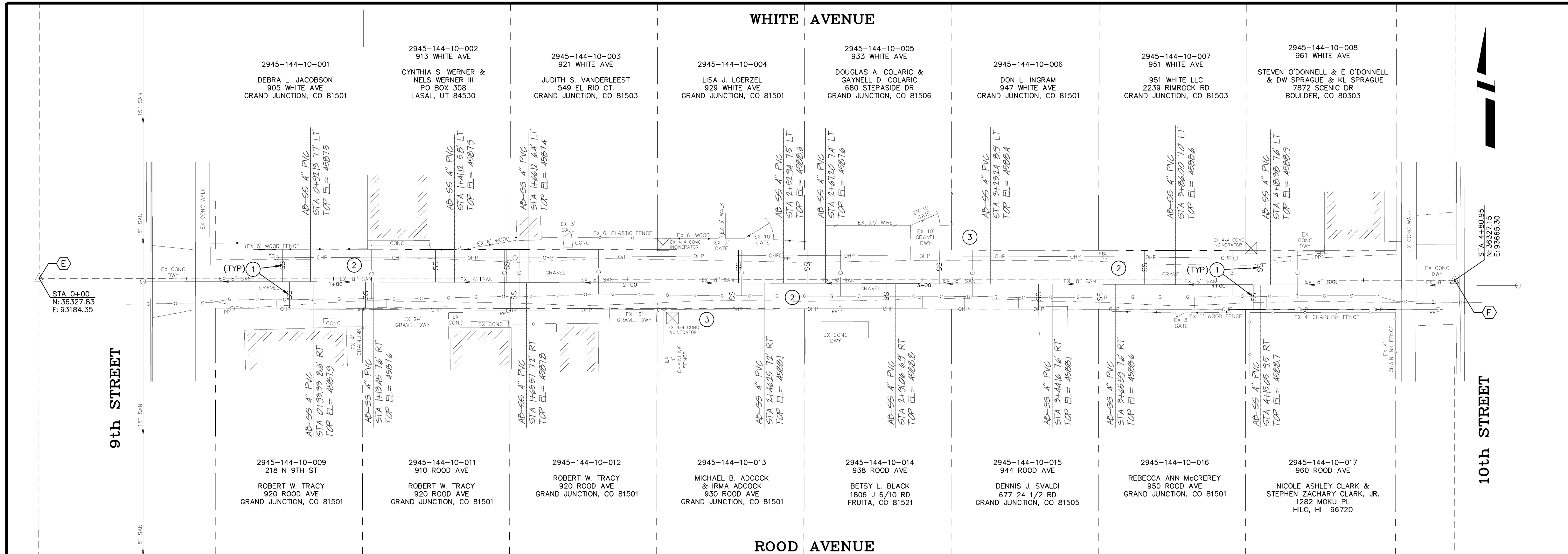
DRAWN BY	TLT	DATE	2005
DESIGNED BY	MG	DATE	2005
CHECKED BY		DATE	
APPROVED BY		DATE	

SCALES:	
PLAN	PROFILE
HORIZONTAL	HORIZONTAL
1" = 20'	1" = 20'
VERTICAL	VERTICAL
1" = 2.5'	1" = 2.5'



PUBLIC WORKS AND UTILITIES ENGINEERING DIVISION

**ALLEY IMPROVEMENT DISTRICT - 2005
6th & 7th - GRAND AVE. & OURAY AVE.
SANITARY SEWER PLAN AND PROFILE
STA 0+00 TO STA 1+80.68**



REVISION	DESCRIPTION	DATE
REVISION 1	AS-BUILT DRAWINGS	FEB, 2006
REVISION 2		
REVISION 3		
REVISION 4		

DRAWN BY	TLT	DATE	2005
DESIGNED BY	MG	DATE	2005
CHECKED BY		DATE	
APPROVED BY		DATE	

SCALES:	
PLAN	1" = 20'
PROFILE	1" = 2'



PUBLIC WORKS AND UTILITIES ENGINEERING DIVISION

**ALLEY IMPROVEMENT DISTRICT - 2005
9th & 10th - ROOD AVE. & WHITE AVE.
SANITARY SEWER SERVICES PLAN
STA 0+00 TO STA 4+80.95**

PROJECT NO. 2011-F00708	
HORIZONTAL CONTROL DATA	
CONTROL POINTS	
(E)	CHISELED "X" INTERSECTION OF CENTERLINE OF N/S ALLEY AND MONUMENT LINE OF 9th STREET. STA 0+00 TBM ELEV. = 4592.74
(F)	SET PK NAIL, INTERSECTION OF CENTERLINE OF E/W ALLEY AND MONUMENT LINE OF 10th STREET. STA 4+80.95 TBM ELEV. = 4593.82

- CONSTRUCTION NOTES**
- 102/103/104 - CONTRACTOR SHALL FIELD VERIFY EXISTING SEWER SERVICE LOCATIONS AND INSTALL NEW 4" SEWER SERVICE TAP AND 4" SEWER PIPE (SDR-35 PVC), INCLUDING ALL BENDS AND FITTINGS, TO ROW LINE AND CONNECT TO EXISTING SERVICE. (SEE CITY OF GRAND JUNCTION STANDARD DETAIL "TYPICAL SERVICE "Y" CONNECTION" SS-06). BACKFILL TRENCH WITH IMPROVED MATERIALS MEETING CITY SPECIFICATION 103.16. (TYP)
 - APPROXIMATE STATIONS OF SEWER SERVICES TO BE REPLACED ARE AS FOLLOWS:

0+82.6 (N)	1+58.9 (N)	2+60.9 (N)	3+60.4 (S)
0+85.0 (S)	1+61.3 (S)	2+87.8 (S)	3+75.6 (N)
1+10.9 (S)	2+35.4 (S)	3+05.8 (N)	4+12.7 (S)
1+34.7 (N)	2+37.6 (N)	3+39.6 (S)	4+14.8 (N)
 - CONTRACTOR IS RESPONSIBLE FOR REPAIR COSTS ASSOCIATED WITH ANY/ALL DAMAGE TO PRIVATE PROPERTY BEHIND RIGHT-OF-WAY LINES AND OUTSIDE OF EASEMENT LINES.

AS-BUILT

NOTE: NOTIFY AFFECTED UTILITY VENDOR 48 HOURS PRIOR TO EXCAVATIONS THAT WILL EXPOSE UTILITY LINES. THE COVER SHEET WILL HAVE A LISTING OF UTILITY VENDORS AND TELEPHONE NUMBERS.

CONTROL POINTS

- ① PK NAIL @ INTERSECTION OF CENTERLINE OF N/S ALLEY AND MONUMENT LINE OF NORTH 11TH STREET. TBM ELEV.= 4611.82
- ② SET PK NAIL @ POINT ON CENTERLINE OF E/W ALLEY (STA 5+28.05), SOUTH SIDE OF 12TH STREET. TBM ELEV.= 4613.84

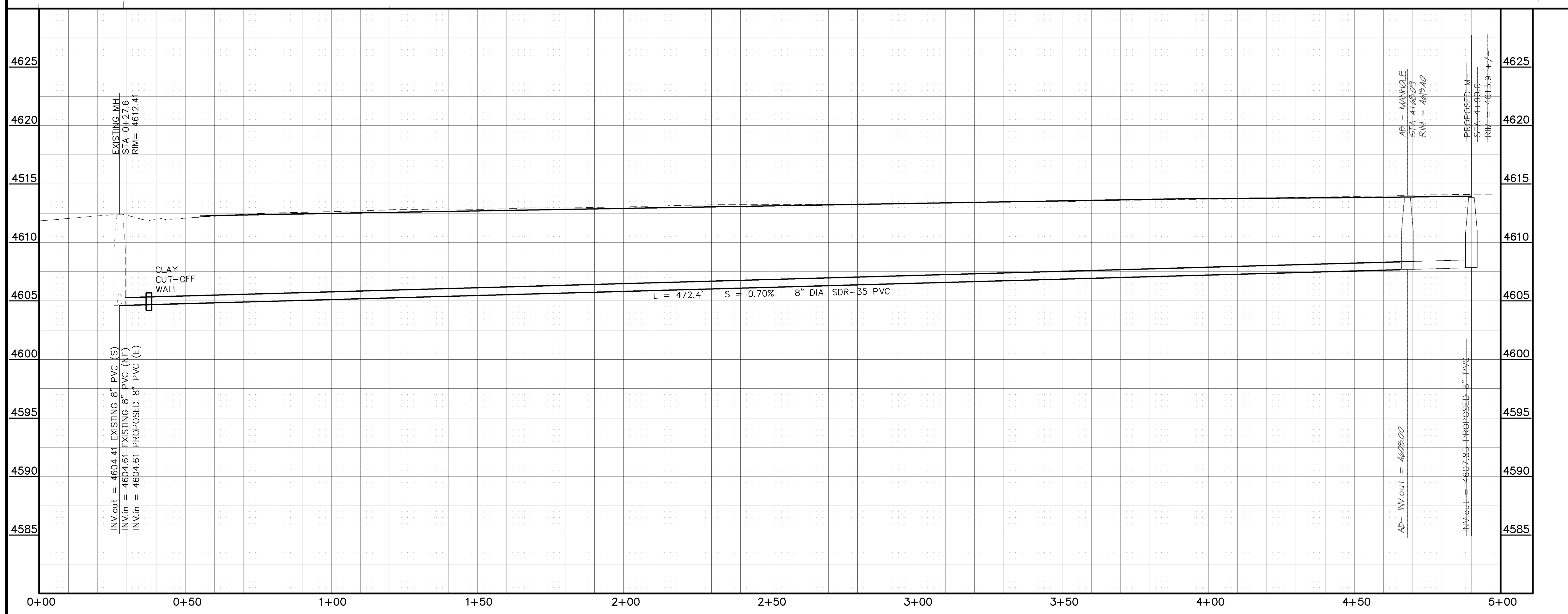
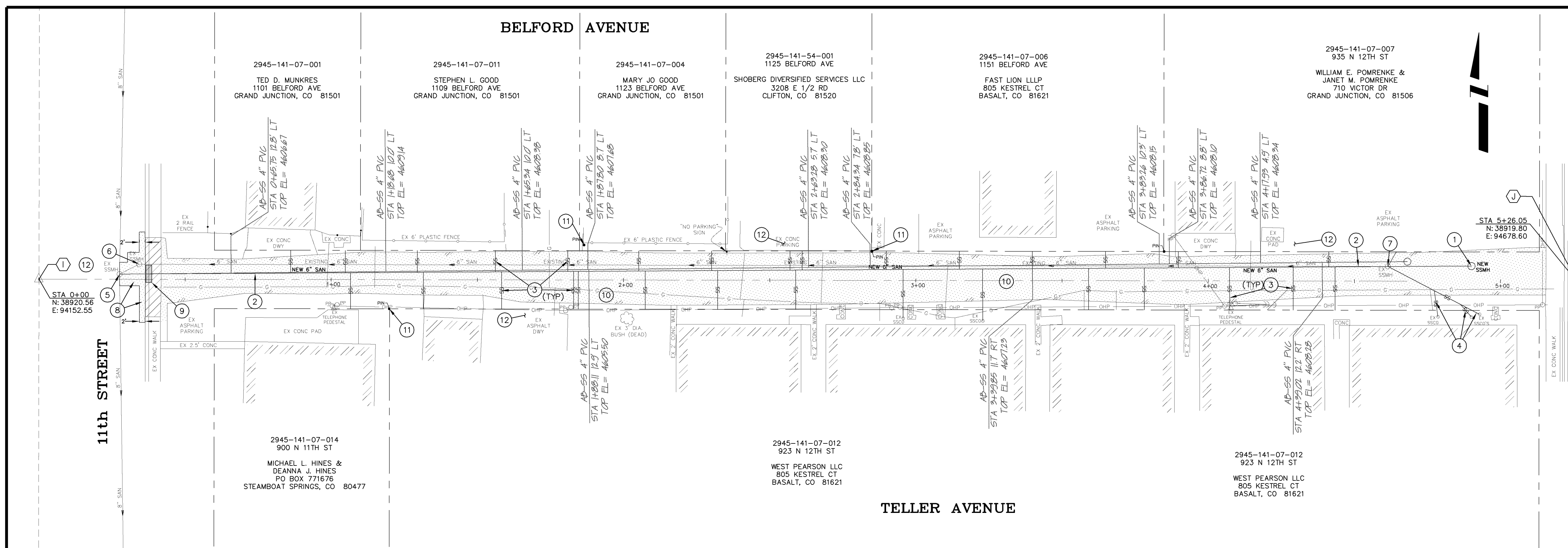
CONSTRUCTION NOTES

- ① 102.11 - INSTALL NEW 48" DIA. SANITARY SEWER MANHOLE (SEE CITY OF GRAND JUNCTION STANDARD DETAIL SS-02).
- ② 102.90A - INSTALL NEW 8" PVC PIPE, SDR-35, BACKFILL TRENCH WITH IMPORTED MATERIALS MEETING CITY SPECIFICATION 103.16.
- ③ 102.9 - CONTRACTOR SHALL FIELD VERIFY EXISTING SEWER SERVICE LOCATIONS AND CURRENT USAGE. ONLY SERVICES CURRENTLY IN USE SHALL BE CONNECTED. INSTALL NEW 4" SEWER SERVICE TAP AND 4" SEWER PIPE (SDR-35 PVC), INCLUDING ALL BENDS AND FITTINGS, TO ROW LINE AND CONNECT TO EXISTING SERVICE. (SEE CITY OF GRAND JUNCTION STANDARD DETAIL "TYPICAL SERVICE "Y" CONNECTION" STANDARD DETAIL SS-06). (TYP)
- ④ SEWER SERVICE TAPS MAY BE TIED TOGETHER AS SHOWN. SEPARATE TAPS AND TIE FROM MAIN INTO EXISTING SERVICE LINE AT PROPERTY LINE.
- ⑤ CONTRACTOR SHALL CONNECT NEW 8" PVC PIPE TO EXISTING MANHOLE BY CORING THE EXISTING MANHOLE AND INSTALLING NEW PIPE PER CITY OF GRAND JUNCTION STANDARD DETAIL SS-08. REMOVE OLD PIPE CONNECTION AND GROUT HOLE SHUT.
- ⑥ REMOVE RING AND COVER AND BARREL SECTION FROM MANHOLE. GROUT ALL PIPES SHUT AND FILL BASE WITH PIT-RUN. PREPARE SUBGRADE FOR PAVING WITH 3" THICK HOT BITUMINOUS PAVEMENT (GRADING SX) OVER A 6" THICK AGGREGATE BASE COURSE (CLASS 6) MEETING CITY SPECIFICATIONS 103.18.
- ⑦ 202 - REMOVE EXISTING MANHOLE COMPLETELY. TIE SERVICE LINES INTO NEW MAIN.
- ⑧ 103.3 - SAWCUT AND REMOVE PAVEMENT AS SHOWN (INDICATED BY DOT HATCH PATTERN).
- ⑨ 102.11 - CLAY CUT OFF WALL SHALL BE PLACED 10' UPSTREAM OF MANHOLE AND SHALL EXTEND 6" ABOVE AND 6" BELOW SEWER PIPE. THE CONTRACT UNIT PRICE FOR GRAVITY SEWER PIPE SHALL INCLUDE THE COST OF CUTOFF WALLS.
- ⑩ SEE "ALLEY PLAN & PROFILE" SHEET #17-18, FOR PAVEMENT REMOVAL AND REPLACEMENT REQUIREMENTS.
- ⑪ 629 - PROTECT SURVEY MONUMENT, PROPERTY PIN, OR OTHER "CONTROL POINT" OF A PERMANENT NATURE. IF DISTURBED, IT MUST BE RESET BY A SURVEYOR LICENSED IN THE STATE OF COLORADO AT THE CONTRACTOR'S EXPENSE. (TYP)
- ⑫ CONTRACTOR IS RESPONSIBLE FOR REPAIR COSTS ASSOCIATED WITH ANY/ALL DAMAGE TO PRIVATE PROPERTY BEHIND RIGHT-OF-WAY LINES AND OUTSIDE OF EASEMENT LINES.

- ASPHALT REMOVAL
- CONCRETE REMOVAL

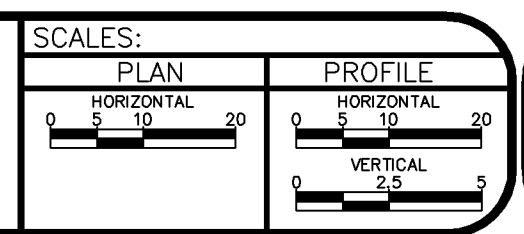
AS-BUILT

NOTE: NOTIFY AFFECTED UTILITY VENDOR 48 HOURS PRIOR TO EXCAVATIONS THAT WILL EXPOSE UTILITY LINES. THE COVER SHEET WILL HAVE A LISTING OF UTILITY VENDORS AND TELEPHONE NUMBERS.



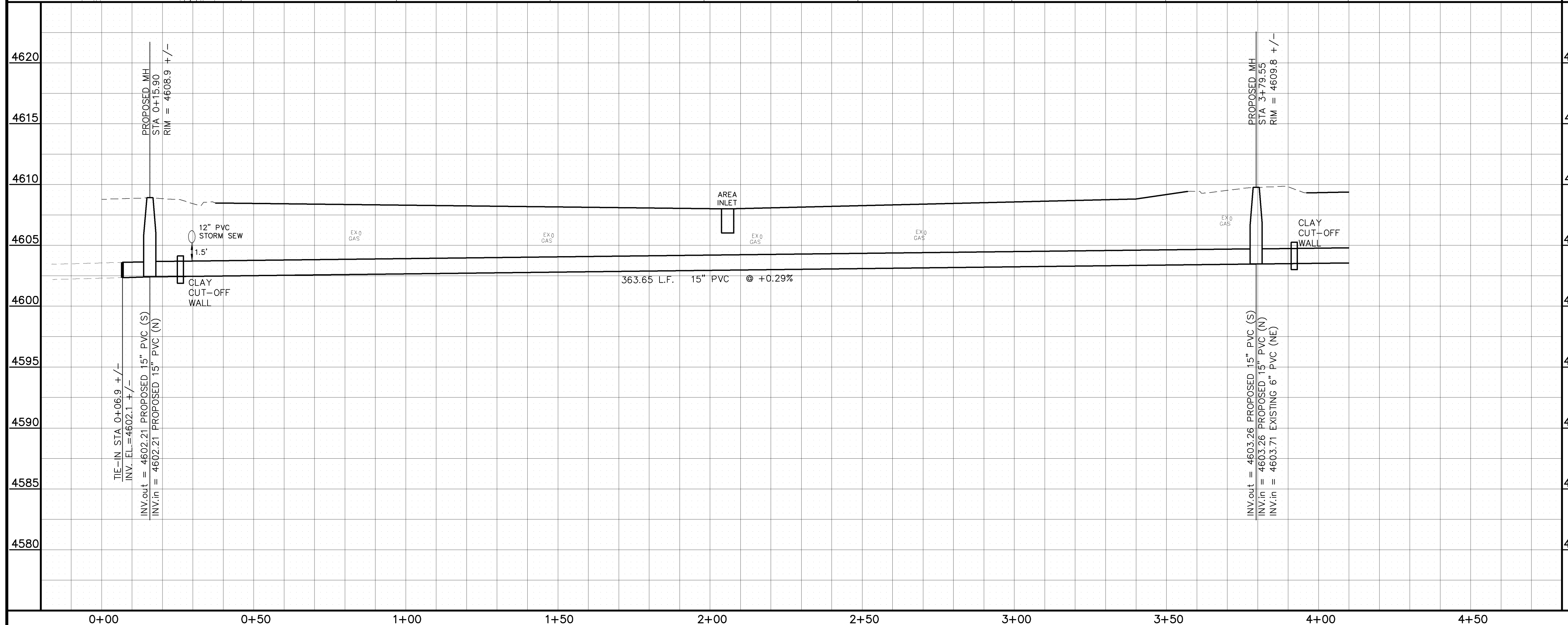
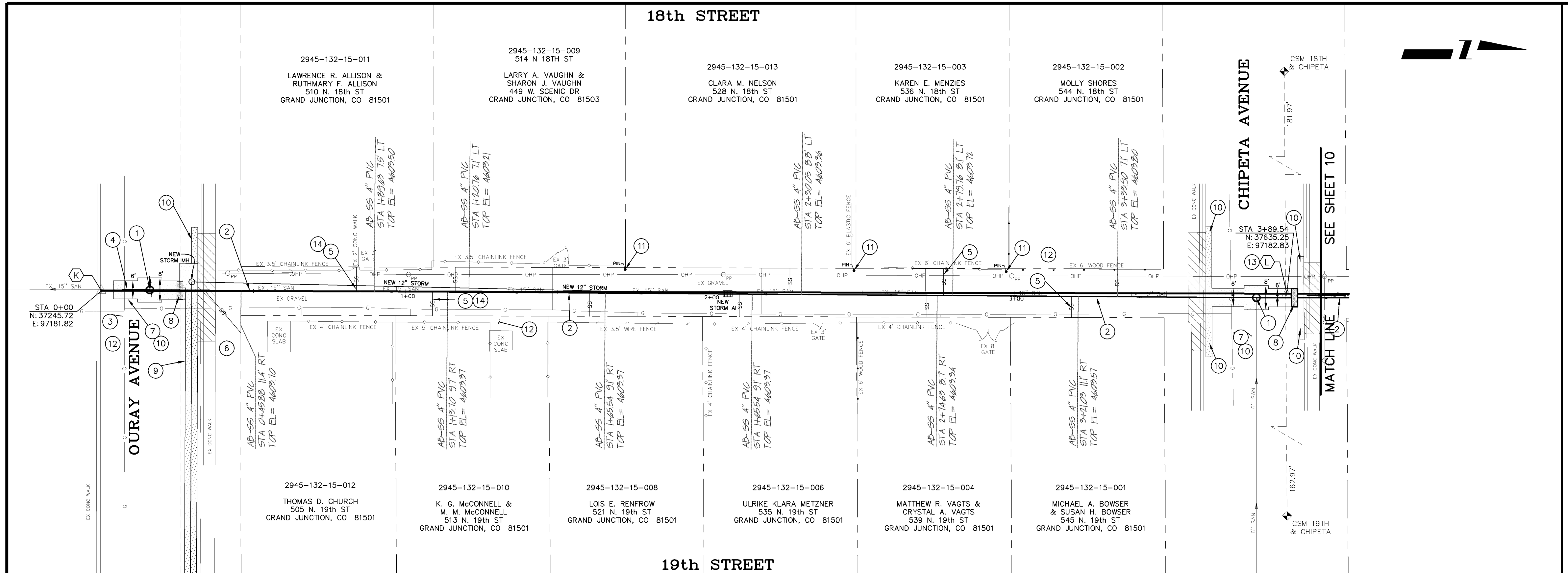
REVISION	DESCRIPTION	DATE
AS-BUILT DRAWINGS		FEB, 2006

DRAWN BY	TLT	DATE	2005
DESIGNED BY	MG	DATE	2005
CHECKED BY		DATE	
APPROVED BY		DATE	



PUBLIC WORKS AND UTILITIES ENGINEERING DIVISION

ALLEY IMPROVEMENT DISTRICT - 2005
 11th & 12th - TELLER AVE. & BELFORD AVE.
 SANITARY SEWER PLAN AND PROFILE
 STA 0+00 TO STA 4+65.00



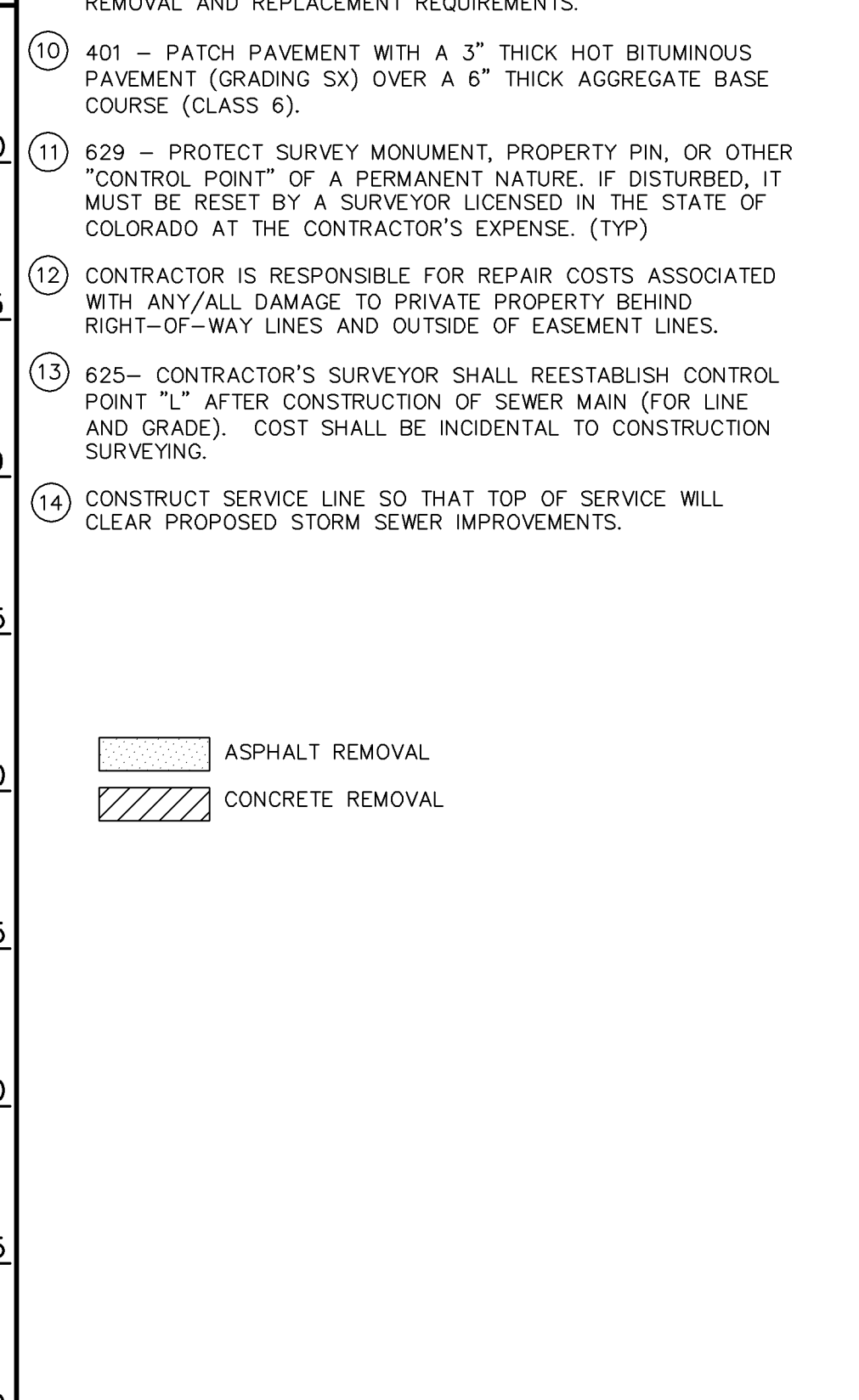
PROJECT NO. 2011-F00708

HORIZONTAL CONTROL DATA

CONTROL POINTS

- (K) SET PK NAIL ON CENTERLINE OF N/S ALLEY AT NORTH EDGE OF GUTTER, SOUTH SIDE OF OURAY TBM ELEV.= 4608.78
- (L) PK NAIL, INTERSECTION OF CENTERLINE OF N/S ALLEY AND MONUMENT LINE OF CHIPETA AVE. (TO BE RESET AFTER SEWER IMPROVEMENTS)

- CONSTRUCTION NOTES**
- 102.11 - REMOVE EXISTING MH. INSTALL NEW 48" DIA. SANITARY SEWER MANHOLE (SEE CITY OF GRAND JUNCTION STANDARD DETAIL SS-02).
 - 102.90A - INSTALL NEW 15" PVC PIPE, SDR-35, BACKFILL TRENCH WITH IMPORTED MATERIALS MEETING CITY SPECIFICATION 103.16.
 - CONTRACTOR SHALL FIELD LOCATE EXISTING 15" PVC STUB AND CONNECT NEW 15" PVC PIPE TO EXISTING 15" PVC BY SOLID SLEEVE COUPLING (CONCRETE ENCASED).
 - CONTRACTOR SHALL INSTALL A TEMPORARY 6" TAP AND 6" PVC PIPE TO STREET SURFACE TO HOOK INTO FOR BYPASS PUMPING. AFTER CONSTRUCTION IS COMPLETE CONTRACTOR SHALL REMOVE 6" PVC PIPE TO TAP, CAP THE TAP AND BACKFILL WITH IMPORTED MATERIALS MEETING CITY SPECIFICATION 103.16.
 - 102.9 - CONTRACTOR SHALL FIELD VERIFY EXISTING SEWER SERVICE LOCATIONS AND INSTALL NEW 4" SEWER SERVICE TAP AND 4" SEWER PIPE (SDR-35 PVC), INCLUDING ALL BENDS AND FITTINGS, TO ROW LINE AND CONNECT TO EXISTING SERVICE. (SEE CITY OF GRAND JUNCTION STANDARD DETAIL "TYPICAL SERVICE "Y" CONNECTION" SS-06). (TYP)
 - CONTRACTOR SHALL REPLACE SEWER SERVICE TAP TO JUST BEYOND LIMITS OF ALLEY CONSTRUCTION ONLY.
 - 103.3 - SAWCUT AND REMOVE PAVEMENT AS SHOWN (INDICATED BY DOT HATCH PATTERN). TYPICAL WIDTH TO INSTALL MANHOLES WILL BE 8' CENTERED ON THE MANHOLE AND SQUARED OFF AS SHOWN. FOR MAIN LINE REMOVAL WIDTH WILL BE 6' MAXIMUM FOR PATCH AND CENTERED ON THE PIPE.
 - 102.11 - CLAY CUT OFF WALL SHALL BE PLACED A MINIMUM OF 10' UPSTREAM OF MANHOLE AND SHALL EXTEND 6" ABOVE AND 6" BELOW SEWER PIPE. THE CONTRACT UNIT PRICE FOR GRAVITY SEWER PIPE SHALL INCLUDE THE COST OF CUTOFF WALLS.
 - SEE STORM SEWER PLAN & PROFILE SHEET #12 FOR PAVEMENT REMOVAL AND REPLACEMENT REQUIREMENTS.
 - 401 - PATCH PAVEMENT WITH A 3" THICK HOT BITUMINOUS PAVEMENT (GRADING SX) OVER A 6" THICK AGGREGATE BASE COURSE (CLASS 6).
 - 629 - PROTECT SURVEY MONUMENT, PROPERTY PIN, OR OTHER "CONTROL POINT" OF A PERMANENT NATURE. IF DISTURBED, IT MUST BE RESET BY A SURVEYOR LICENSED IN THE STATE OF COLORADO AT THE CONTRACTOR'S EXPENSE. (TYP)
 - CONTRACTOR IS RESPONSIBLE FOR REPAIR COSTS ASSOCIATED WITH ANY/ALL DAMAGE TO PRIVATE PROPERTY BEHIND RIGHT-OF-WAY LINES AND OUTSIDE OF EASEMENT LINES.
 - 625- CONTRACTOR'S SURVEYOR SHALL REESTABLISH CONTROL POINT "L" AFTER CONSTRUCTION OF SEWER MAIN (FOR LINE AND GRADE). COST SHALL BE INCIDENTAL TO CONSTRUCTION SURVEYING.
 - CONSTRUCT SERVICE LINE SO THAT TOP OF SERVICE WILL CLEAR PROPOSED STORM SEWER IMPROVEMENTS.

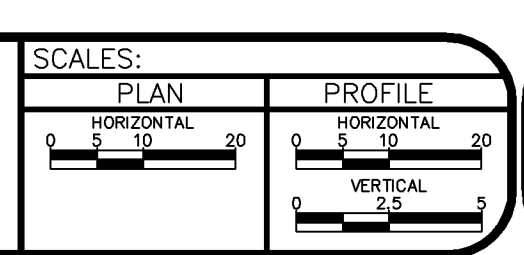


AS-BUILT

NOTE: NOTIFY AFFECTED UTILITY VENDOR 48 HOURS PRIOR TO EXCAVATIONS THAT WILL EXPOSE UTILITY LINES. THE COVER SHEET WILL HAVE A LISTING OF UTILITY VENDORS AND TELEPHONE NUMBERS.

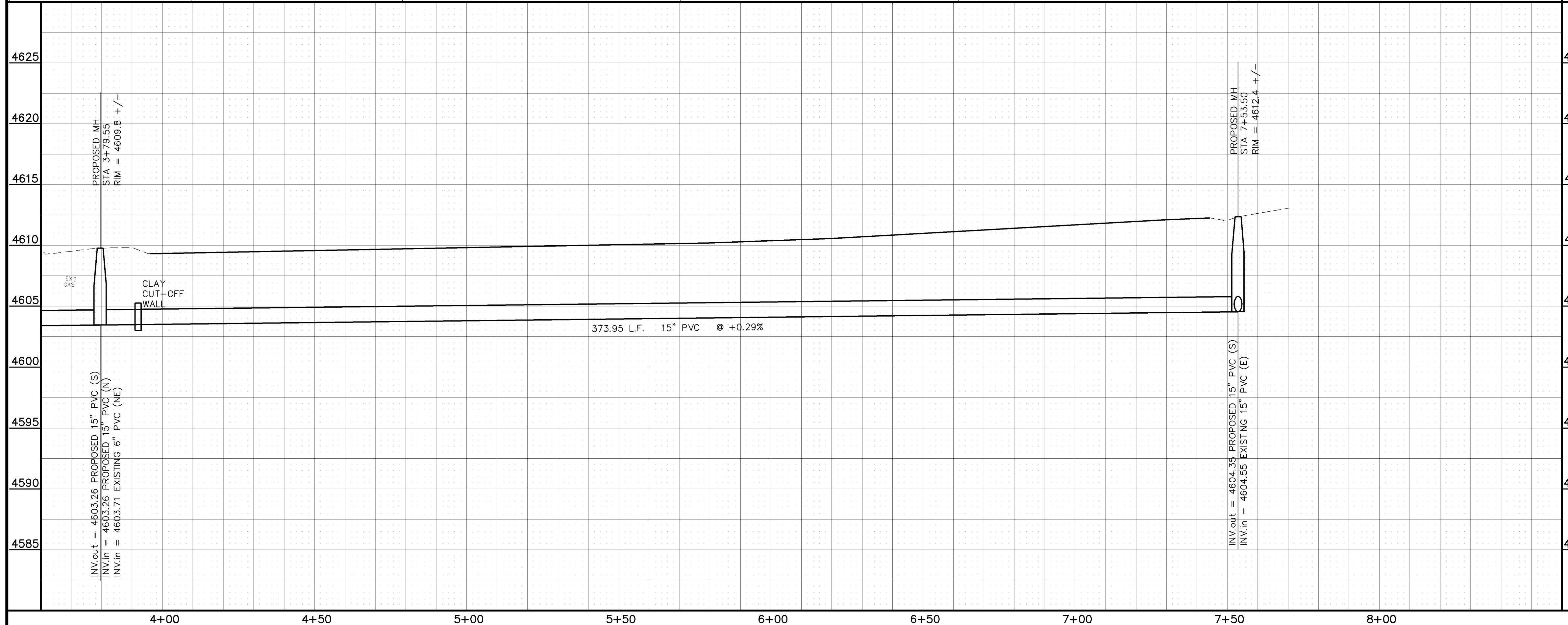
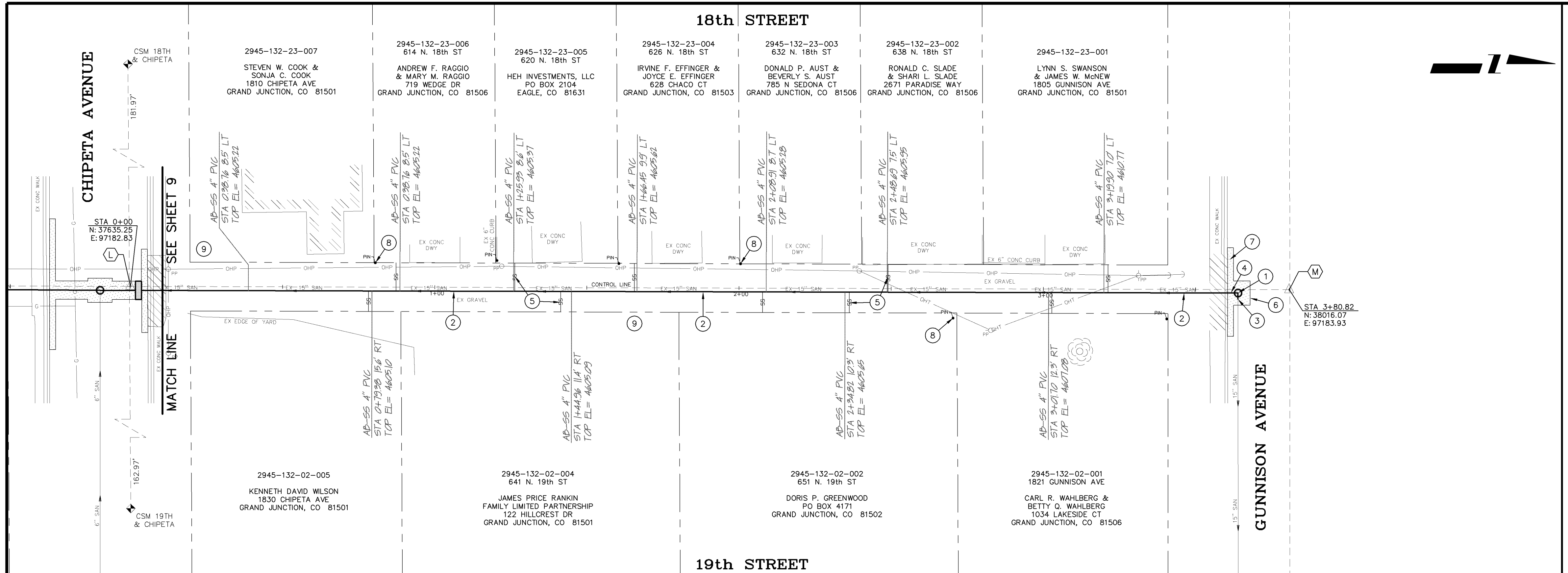
REVISION	DESCRIPTION	DATE
AS-BUILT DRAWINGS		FEB. 2006

DRAWN BY	TLT	DATE	2005
DESIGNED BY	MG	DATE	2005
CHECKED BY		DATE	
APPROVED BY		DATE	



PUBLIC WORKS AND UTILITIES ENGINEERING DIVISION

ALLEY IMPROVEMENT DISTRICT - 2005
 18th & 19th - OURAY AVE. TO CHIPETA AVE.
 SANITARY SEWER PLAN AND PROFILE
 STA 0+00 TO STA 4+00



PROJECT NO. 2011-F00708	
HORIZONTAL CONTROL DATA	
CONTROL POINTS	
(L)	PK NAIL, INTERSECTION OF CENTERLINE OF N/S ALLEY AND MONUMENT LINE OF CHIPETA AVE. (TO BE RESET AFTER SEWER IMPROVEMENTS)
(M)	SET PK NAIL, INTERSECTION OF CENTERLINE OF N/S ALLEY AND MONUMENT LINE OF GUNNISON AVE. TBM ELEV.= 4613.06

- CONSTRUCTION NOTES**
- 102.11 - REMOVE EXISTING MH. INSTALL NEW 48" DIA. SANITARY SEWER MANHOLE (SEE CITY OF GRAND JUNCTION STANDARD DETAIL SS-02).
 - 102.90A - INSTALL NEW 15" PVC PIPE, SDR-35, BACKFILL TRENCH WITH IMPORTED MATERIALS MEETING CITY SPECIFICATION 103.16.
 - CONTRACTOR SHALL EXTEND NEW 15" PVC BEYOND NEW MANHOLE AND TIE NEW 15" PVC INTO EXISTING 15" PVC PIPE USING CAULDER COUPLING.
 - CONTRACTOR SHALL INSTALL A TEMPORARY 6" TAP AND 6" PVC PIPE TO STREET SURFACE TO HOOK INTO FOR BYPASS PUMPING. AFTER CONSTRUCTION IS COMPLETE CONTRACTOR SHALL REMOVE 6" PVC PIPE TO TAP, CAP THE TAP AND BACKFILL WITH IMPORTED MATERIALS MEETING CITY SPECIFICATION 103.16.
 - 102.9 - CONTRACTOR SHALL FIELD VERIFY EXISTING SEWER SERVICE LOCATIONS AND INSTALL NEW 4" SEWER SERVICE TAP AND 4" SEWER PIPE (SDR-35 PVC), INCLUDING ALL BENDS AND FITTINGS, TO ROW LINE AND CONNECT TO EXISTING SERVICE. (SEE CITY OF GRAND JUNCTION STANDARD DETAIL "TYPICAL SERVICE "Y" CONNECTION" SS-06). (TYP)
 - 103.3 - SAWCUT AND REMOVE PAVEMENT AS SHOWN (INDICATED BY DOT HATCH PATTERN). TYPICAL WIDTH TO INSTALL MANHOLES WILL BE 8' CENTERED ON THE MANHOLE AND SQUARED OFF AS SHOWN. FOR MAIN LINE REMOVAL WIDTH WILL BE 6' MAXIMUM FOR PATCH AND CENTERED ON THE PIPE. SERVICE TRENCH WIDTH SHALL BE 6' MAXIMUM.
 - SEE "ALLEY PLAN & PROFILE" SHEET #20, FOR PAVEMENT REMOVAL AND REPLACEMENT REQUIREMENTS.
 - 629 - PROTECT SURVEY MONUMENT, PROPERTY PIN, OR OTHER "CONTROL POINT" OF A PERMANENT NATURE. IF DISTURBED, IT MUST BE RESET BY A SURVEYOR LICENSED IN THE STATE OF COLORADO AT THE CONTRACTOR'S EXPENSE. (TYP)
 - CONTRACTOR IS RESPONSIBLE FOR REPAIR COSTS ASSOCIATED WITH ANY/ALL DAMAGE TO PRIVATE PROPERTY BEHIND RIGHT-OF-WAY LINES AND OUTSIDE OF EASEMENT LINES.

AS-BUILT

NOTE: NOTIFY AFFECTED UTILITY VENDOR 48 HOURS PRIOR TO EXCAVATIONS THAT WILL EXPOSE UTILITY LINES. THE COVER SHEET WILL HAVE A LISTING OF UTILITY VENDORS AND TELEPHONE NUMBERS.

ASPHALT REMOVAL
CONCRETE REMOVAL

REVISION	DESCRIPTION	DATE	DRAWN BY	DATE
REVISION	AS-BUILT DRAWINGS	FEB, 2006	TLT	2005
REVISION			DESIGNED BY	DATE
REVISION			CHECKED BY	DATE
REVISION			APPROVED BY	DATE

SCALES:

PLAN: 1" = 20'

PROFILE: HORIZONTAL 1" = 20', VERTICAL 1" = 2.5'

CITY OF Grand Junction COLORADO

PUBLIC WORKS AND UTILITIES ENGINEERING DIVISION

ALLEY IMPROVEMENT DISTRICT - 2005
18th & 19th - CHIPETA AVE. TO GUNNISON AVE.
SANITARY SEWER PLAN AND PROFILE
STA 4+00 TO STA 7+70.36