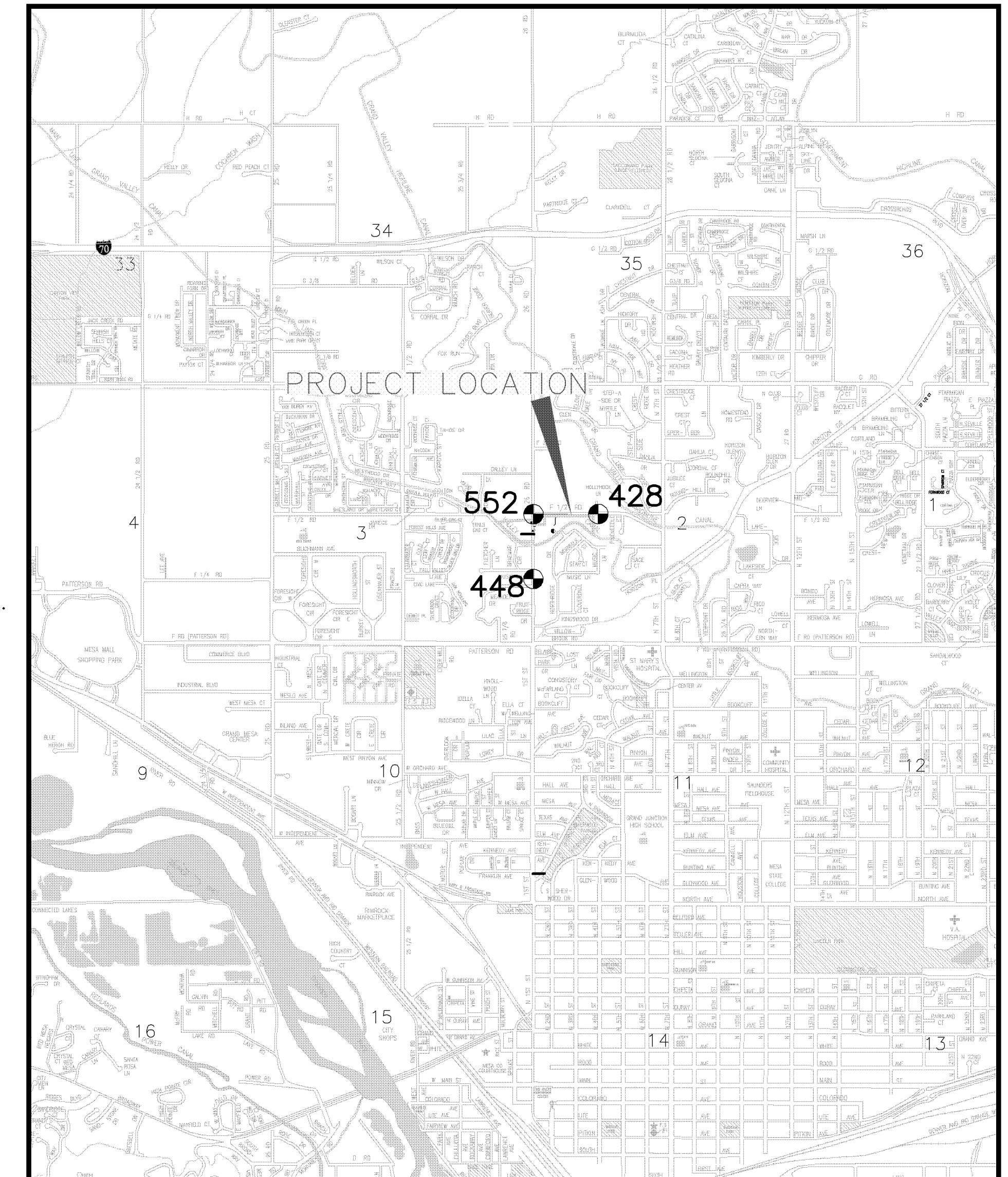


26 ROAD AND F 1/2 ROAD NEIGHBORHOOD SEWER IMPROVEMENT DISTRICT

March 9, 2006

- 1 ————— Cover Sheet
- 2 ————— Standard Abbreviations, Legend, and Symbols
- 3 ————— Summary of Approximate Quantities
- 4-5 ————— F 1/2 Road Sanitary Sewer Plan & Profile
- 6 ————— 26 Road Sanitary Sewer Plan & Profile
- 7 ————— Sanitary Sewer Plan and Profile (Service for Potter Parcel)
- 8 ————— Sanitary Sewer Plan and Profile (Service for Crosser Parcel)
- 9 ————— Storm Water Management Plan

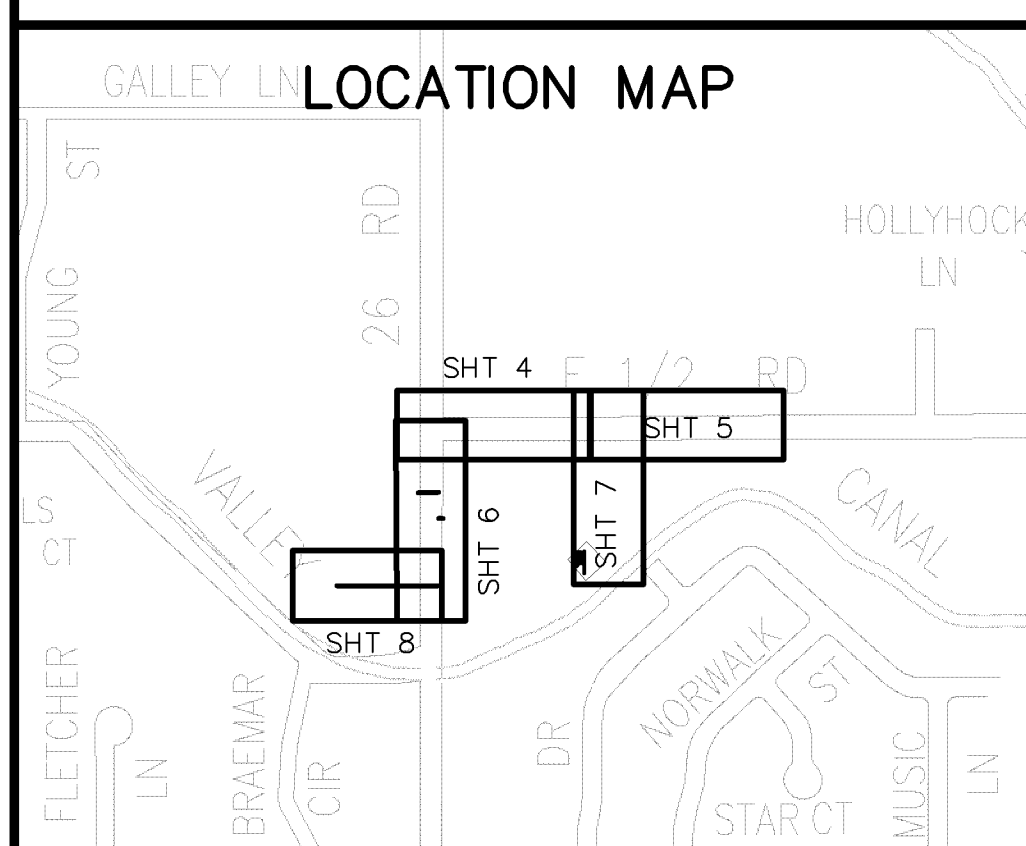
VICINITY MAP



PROJECT CONTROL MONUMENTS

PNT NO	NORTHING	EASTING	ELEV	DESCRIPTION
428	47366.60	90769.95	4650.48	MCSM 26 1/2 RD & F 1/2 RD
448	46051.03	89453.72	4650.04	MCSM F 1/2 & 26 RD
552	47362.99	89454.79	4621.02	MCSM 26 RD & F 1/2 RD

UTILITIES AND AGENCIES								
AGENCY	NAME	POSITION	ROLE	MAILING ADDRESS	STREET ADDRESS	CITY, STATE	VOICE-WK	FAX
GRAND JUNCTION, CITY OF	JUSTIN VENSEL	PROJECT MANAGER	PROJECT ENGINEER	250 N. 5th STREET	250 N. 5th STREET	GRAND JCT., CO 81501	(970) 256-4017	(970) 256-4022
GRAND JUNCTION, CITY OF	BRET GUILLORY	UTILITY ENGINEER	SANITARY SEWER	250 N. 5th STREET	250 N. 5th STREET	GRAND JCT., CO 81501	(970) 244-1590	(970) 256-4022
GRAND VALLEY IRRIGATION CO.	PHIL BERTRAND		IRRIGATION	688 26 ROAD	688 26 ROAD	GRAND JCT., CO 81506	(970) 242-2762	
BRESNAN	GLENN VANCIL		CABLE TV	2502 FORESIGHT CIRCLE	2502 FORESIGHT CIRCLE	GRAND JCT., CO 81504	(970) 245-8750	(970) 245-6803
U.S. WEST/QWEST	DAN WISEMAN	ENGINEER	TELEPHONE	2524 BLICKMAN ROAD	2524 BLICKMAN ROAD	GRAND JCT., CO 81504	(970) 244-4311	(970) 240-4349
UTE WATER	DARYL MOORE	ENGINEER	WATER	PO BOX 460		GRAND JCT., CO 81502	(970) 242-7491	(970) 242-9189
XCEL	STEVE LOPEZ	PROJECT MANAGER	GAS, ELECTRIC	2538 BLICKMAN ROAD	2538 BLICKMAN ROAD	GRAND JCT., CO 81504	(970) 244-2698	(970) 244-2661



*Public Works & Utilities
Engineering Division*

DRAWING STATUS:		<input type="checkbox"/> PROGRESS
		<input type="checkbox"/> FINAL CONSTRUCTION DRAWINGS
		<input checked="" type="checkbox"/> ASBUILT
ASBUILT MARCH 9, 2006		
DESIGNED BY:	<i>Justin Vensel</i>	7/15/05
JUSTIN VENSEL, PROJECT MANAGER		DATE
REVIEWED BY:	<i>Bret Guillory</i>	7/15/05
BRET GUILLORY, UTILITY ENGINEER		DATE
AUTHORIZED FOR CONSTRUCTION	<i>Michael G. McDill</i>	7-15-05
MICHAEL G. MCDILL, CITY ENGINEER		DATE
ACCEPTED AS CONSTRUCTED		
JUSTIN VENSEL, PROJECT MANAGER		DATE

ABBREVIATIONS

AASHTO	AMERICAN ASSOCIATION OF STATE HIGHWAY & TRANSPORTATION OFFICIALS
ABC	AGGREGATE BASE COURSE
AC	ASBESTOS CEMENT
AP	ANGLE POINT
ASB	ANCHORED STRAW BALES
ASP	ALUMINIZED STEEL PIPE
ASTM	AMERICAN SOCIETY FOR TESTING MATERIALS
AWWA	AMERICAN WATER WORKS ASSOCIATION
BC	BACK OF CURB
BF	BUTTERFLY VALVE
BOW	BACK OF WALK
BCR	BEGIN CURB RETURN
BOT	BOTTOM
BSWMP	BETTER STORM WATER MANAGEMENT PRACTICES
CH	CHORD
CAP	CORRUGATED ALUMINUM PIPE
CDOT	COLORADO DEPARTMENT OF TRANSPORTATION
CI	CAST IRON
C.G.& SW	CURB, GUTTER & SIDEWALK
CL	CENTER LINE
CL	CLEAR
CMP	CORRUGATED METAL PIPE
CO	CLEAN OUT
COMB	COMBINATION (AS IN STORM SEWER AND SANITARY SEWER)
CONC	CONCRETE
CSM	CITY SURVEY MONUMENT
CSP	CORRUGATED STEEL PIPE
CU	COPPER
DI	DUCTILE IRON
DWY	DRIVEWAY
E	ELECTRIC
ECR	END CURB RETURN
EG	EDGE OF GUTTER
EL	ELEVATION
EP	EDGE OF PAVEMENT
EX	EXISTING
FB	FULL BODY
FC	FACE OF CURB
FG	FINISHED GRADE
E	FLOW LINE
FL	FLANGE
FM	FOUR MAIN
FO	FIBER OPTICS
FS	FAR SIDE
FTG	FOOTING
G	GAS
GB	GRADE BREAK
GM	GAS METER
GV	GATE VALVE
HBP	HOT BITUMINOUS PAVEMENT
HDPE	HIGH DENSITY POLYETHYLENE
INV	INVERT
IRR	IRRIGATION
L	LENGTH OF ARC
LC	LONG CHORD
LF	LINEAR FEET
LL	LONG ARC
LS	SHORT ARC
LT	LEFT
MB	MAILBOX
MCSM	MESA COUNTY SURVEY MONUMENT
MH	MANHOLE
MJ	MECHANICAL JOINT
MW	MILL WRAP
N/A	NOT APPLICABLE
NIC	NOT IN CONTRACT
NOP	NO ONE PERSON
NRCP	NON-REINFORCED CONCRETE PIPE
NS	NEAR SIDE
NTS	NOT TO SCALE
OHP	OVERHEAD POWER
OHT	OVERHEAD TELEPHONE
PC	POINT OF CURVATURE
PCC	POINT OF COMPOUND CURVATURE
PE	POLYETHYLENE
PERF	PERFORATED
PI	POINT OF INTERSECTION
PIP	PLASTIC IRRIGATION PIPE
POC	POINT ON CURVE
POT	POINT ON TANGENT
PR	PROPOSED
PRC	POINT OF REVERSE CURVATURE
PT	POINT OF TANGENCY
PVC	POLYVINYL CHLORIDE
R	RADIUS
RCP	REINFORCED CONCRETE PIPE
REQ'D	REQUIRED
RG	RESTRAINED GLANDS
RL	LONG RADIUS
ROW	RIGHT OF WAY
RP	RADIUS POINT
RR	RAIL ROAD
RS	SHORT RADIUS
RT	RIGHT
S	SLOPE
SAN	SANITARY
SC	SHORT CHORD
SCD	STANDARD CONTRACT DOCUMENTS
SCH	SCHEDULE
SF	SILT FENCE
SL	SECTION LINE
SSRB	STANDARD SPECIFICATIONS FOR ROAD & BRIDGE CONSTRUCTION
SSUU	STANDARD SPECIFICATIONS FOR CONSTRUCTION OF UNDERGROUND UTILITIES
STA	STATION
STL	STEEL
STM	STORM
T	TELEPHONE
TAN	LENGTH OF TANGENT
TC	TOP OF CURB
TH	TEST HOLE
TV	TELEVISION
(TYP)	TYPICAL
UU	UNDERGROUND UTILITIES
VC	VERTICAL CURVE
VCP	VITRIFIED CLAY PIPE
VPC	VERTICAL POINT OF CURVATURE
VPCC	VERTICAL POINT OF COMPOUND CURVATURE
VPRC	VERTICAL POINT OF REVERSE CURVATURE
VPI	VERTICAL POINT OF INTERSECTION
VPT	VERTICAL POINT OF TANGENCY
W	WATER
Δ	DELTA ANGLE

LEGEND


BSWMP	
DRAINAGE BASIN BOUNDARY	
BSWMP	
ANCHORED STRAW BALES	
BSWMP	
SILT FENCE	
BUILDING	
CONCRETE CURB AND GUTTER	
CONCRETE CURB, GUTTER, & SIDEWALK	
CONCRETE DITCH	
CONCRETE SIDEWALK	
CULVERT	
EARTH DITCH	
EDGE OF GRAVEL	
EDGE OF PAVEMENT	
FENCE (BARBED WIRE)	
FENCE (CHAIN LINK)	
FENCE (IRON)	
FENCE (PLASTIC)	
FENCE (TEMPORARY CONSTRUCTION)	
FENCE (WOOD)	
FENCE (WOVEN WIRE)	
GUARD RAIL	
HATCHING: INDICATES ASPHALT REMOVAL	
HATCHING: INDICATES CONCRETE REMOVAL	
HATCHING: INDICATES NEW BASE COURSE	
LINE (CENTER OF IMPROVEMENTS)	
LINE (CITY LIMITS)	
LINE (CONTROL)	
LINE (EASEMENT)	
LINE (MONUMENT/SECTION)	
LINE (PROPERTY)	
LINE (RIGHT OF WAY)	
MATCH LINE	
MATCH LINE	
SEE SHEET NO ?	
PIPE (IRRIGATION)	
PIPE (SIPHON)	

PROPOSED CONCRETE CURB AND GUTTER	
PROPOSED CONCRETE CURB, GUTTER, & SIDEWALK	
PROPOSED CONCRETE SIDEWALK	
PROPOSED "WET" UTILITIES (CONSTRUCTION NOTE WILL INDICATE TYPE, SIZE, AND MATERIAL OF NEW MAIN)	
8" PVC SANITARY SEWER	
ALL PROPOSED FEATURES NOT SHOWN IN LEGEND WILL BE SHOWN THE SAME AS THEIR EXISTING COUNTERPART, BUT INDICATED BY BOLDER LINETYPE	
RAIL ROAD	
RETAINING WALL	
STRIPING (CONTINUOUS WHITE)	
STRIPING (DASHED WHITE)	
STRIPING (CONTINUOUS YELLOW)	
STRIPING (DASHED YELLOW)	
TOP OF SLOPE	
CONTOUR LINES (SHOWN BETWEEN TOP & TOE)	
TOE OF SLOPE	
TRAFFIC DETECTOR LOOP	
UTILITY LINE (ABANDON) (THIS CASE A WATER LINE)	
UTILITY LINE (CABLE TV)	
UTILITY LINE (ELECTRIC)	
UTILITY LINE (FIBER OPTIC)	
UTILITY LINE (GAS)	
UTILITY LINE (HIGH VOLTAGE OVERHEAD POWER)	
UTILITY LINE (OVERHEAD POWER)	
UTILITY LINE (OVERHEAD TELEPHONE)	
UTILITY LINE (SANITARY SEWER)	
UTILITY LINE (SANITARY SEWER FORCE MAIN)	
UTILITY LINE (SANITARY SEWER SERVICE)	
UTILITY LINE (STORM SEWER)	
UTILITY LINE (STORM SEWER, PERFORATED)	
UTILITY LINE (STORM/SANITARY SEWER SEWER COMBINATION)	
UTILITY LINE (TELEPHONE)	
UTILITY LINE (WATER)	

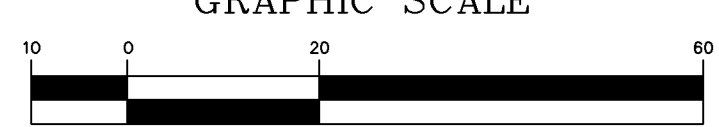
SYMBOLS

BENCH MARK	
CATCH BASIN	
CLEAN OUT	
CURB STOP	
FIRE HYDRANT	
GUY WIRE ANCHOR	
HEADGATE	
IRRIGATION PUMP	
MAILBOX	
MANHOLE (ELECTRIC)	
MANHOLE (GAS)	
MANHOLE (SANITARY/STORM)	
MANHOLE (TELEPHONE)	
MANHOLE (TV)	
MANHOLE (WATER)	
METER (GAS)	
METER (WATER)	
PEDESTAL (TELEPHONE)	
PEDESTAL (TV)	
PROPERTY PIN	
PULL BOX	
REDUCER FITTING	
SIGN OR POST (SIGN TYPE NOTED)	
SPRINKLER HEAD	
STREET LIGHT	
SURVEY MONUMENT (CITY)	
SURVEY MONUMENT (TYPE NOTED)	
TEST HOLE	
TRAFFIC PAINT MARKING	
TRAFFIC SIGNAL POLE AND MAST ARM	
UTILITY POLE	
VALVE (GAS)	
VALVE (IRRIGATION)	
VALVE (WATER)	
VEGETATION (HEDGE OR BUSH)	
VEGETATION (TREE STUMP)	
VEGETATION (TREE) (CALIPER SIZE NOTED)	
WATER HYDRANT	
WEIR	
YARD LIGHT	

NORTH ARROW:



BAR SCALE:



GRAPHIC SCALE

(IN FEET)
1 inch = 20 ft.

REVISION	DESCRIPTION	DATE
REVISION A		
REVISION B		
REVISION C		
REVISION D		

DRAWN BY	JCS	DATE	4-02
DESIGNED BY		DATE	
CHECKED BY		DATE	
APPROVED BY		DATE	

SCALE	
PLAN	PROFILE
HORIZ. 1"=20'	HORIZ.
	VERT.



**PUBLIC WORKS
AND UTILITIES
ENGINEERING DIVISION**

**CITY OF GRAND JUNCTION
STANDARD ABBREVIATIONS, LEGEND,
AND SYMBOLS SHEET**

Item No.	CDOT, City Ref.	Description	Quantity	Units
1	102	2 Way Sewer Service Clean Out W/Casting Ring and Cover	2.	EA
2	102	2 Way Sewer Service Clean Out w/Irrigation Control Box	2.	EA
3	103.16	Import pit run material . Include excavation, haul , and disposal of unsuitable material	750.	TON
4	108.2	8" Gravity Sewer Pipe (SDR-35 PVC) w/ native backfill. Includes granular bedding and haunching material and clay cut-off walls.	675.	LF
5	108.2	6" Gravity Sewer Pipe (SDR-35 PVC) w/ native backfill. Includes granular bedding and haunching material and clay cut-off walls.	430.	LF
6	108.2	4" Gravity Sewer Pipe (SDR-35 PVC) service line w/ native backfill. Includes granular bedding and haunching material.	771.	LF
7	108.2	12" Irrigation Pipe (SDR-35 PVC)	55.	LF
8	108.4	Sewer service tap, 8"X4" Full body Wye w/ 4" 45 degree bend.	4.	EA
9	108.4	Sewer service tap, 6"X4" Full body Wye w/ 4" 45 degree bend.	8.	EA
10	108.5	Sanitary Sewer Basic Manhole Components (48" I.D.)	4.	EA
11	108.5	Manhole Barrel (D > 5')(48" I.D.)	25.	LF
12	108.5	Connect to Existing Manhole (8" pipe)	1.	EA
13	108.5	Connect to existing Manhole (6" pipe)	1.	EA
14	108.7	Ganular stabilization material	260.	TON
15	108.9	Remove and replace asphalt along 26 Rd and F .5 Rd. Hot bituminous pavement (patching), (3" thick)(grading SX binder PG 64-22. Include class 6 aggregate base course (6" thick).	870.	SY
16	201	Clearing and Grubbing	Lump	sum
17	208	Erosion log (12 inch)	30.	LF
18	209.05	Dust Palliative	Lump	sum
19	210.04	Reset Fence (4' Wire)	15.	LF
20	210.04	Reset Fence (4' Wire Grape Arbor)	128.	LF
21	304	Aggregate Base Course (Class 6) (4" Thick)	186.	SY
22	620	Portable Sanitary Facility	Lump	sum
23	625	Construction Surveying, Including As-built Plans	Lump	sum
24	626	Mobilization and Bonding	Lump	sum
25	630	Traffic Control (Complete In Place)	Lump	sum
26	630	Traffic Control Plan	Lump	sum
27	630	Flagging	40.	HR
28	GCC56	Newsletter (approx 30 per week)	Lump	sum
FA		Force Account (minor contract revisions)	---	---

REVISION Δ _____	DESCRIPTION _____	DATE _____	DRAWN BY _____	DATE _____
REVISION Δ _____	DESCRIPTION _____	DATE _____	DESIGNED BY _____	DATE _____
REVISION Δ _____	DESCRIPTION _____	DATE _____	CHECKED BY _____	DATE _____
REVISION Δ _____	DESCRIPTION _____	DATE _____	APPROVED BY _____	DATE _____

SCALE _____
N.T.S.



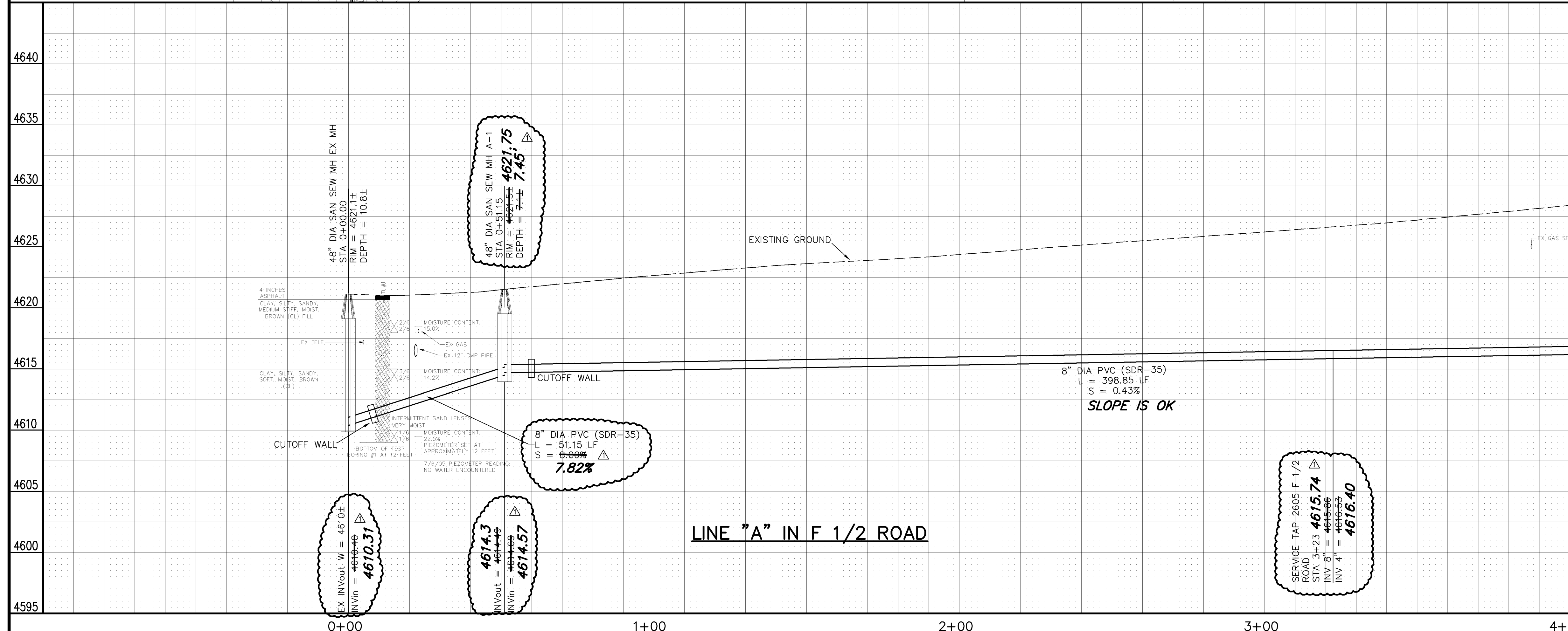
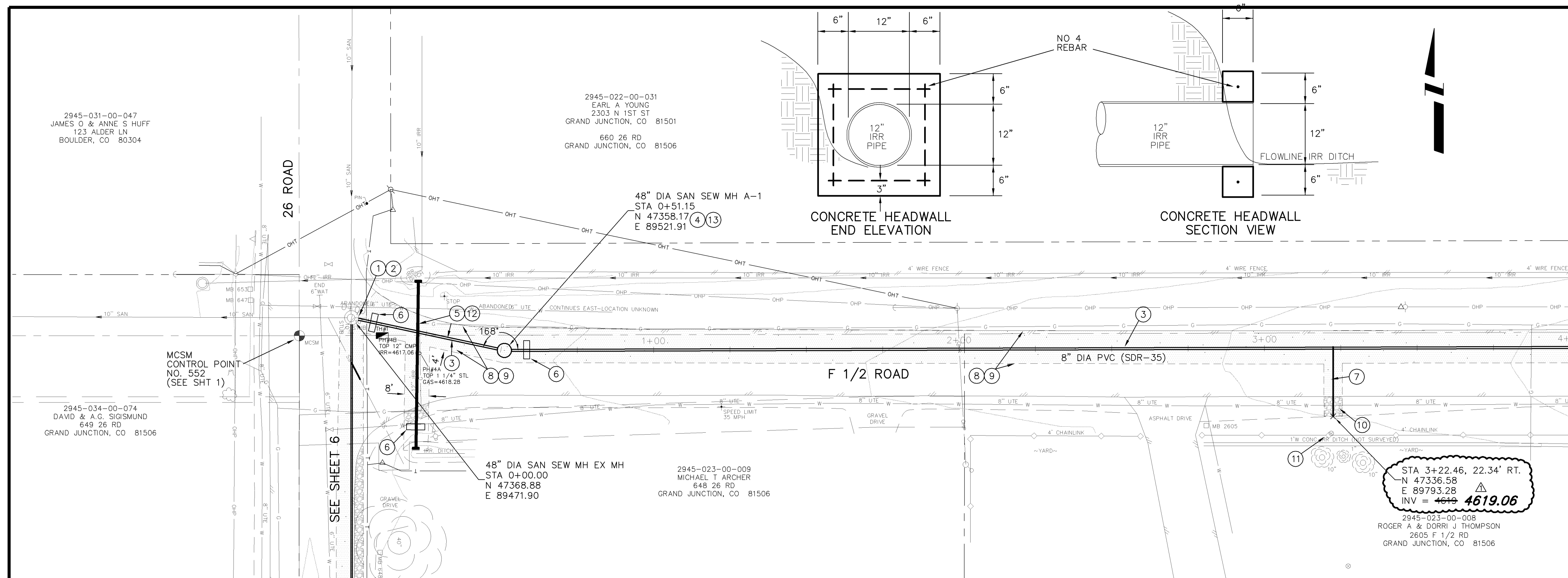
PUBLIC WORKS AND UTILITIES ENGINEERING DIVISION

26 ROAD AND F 1/2 ROAD NEIGHBORHOOD S.I.D. SUMMARY OF APPROXIMATE QUANTITIES

N:\s\1071\48222_06_10\1071_Plan\GIS\Drawings\DWG\1348.dwg, 3:30:00 PM, 11/07/2010

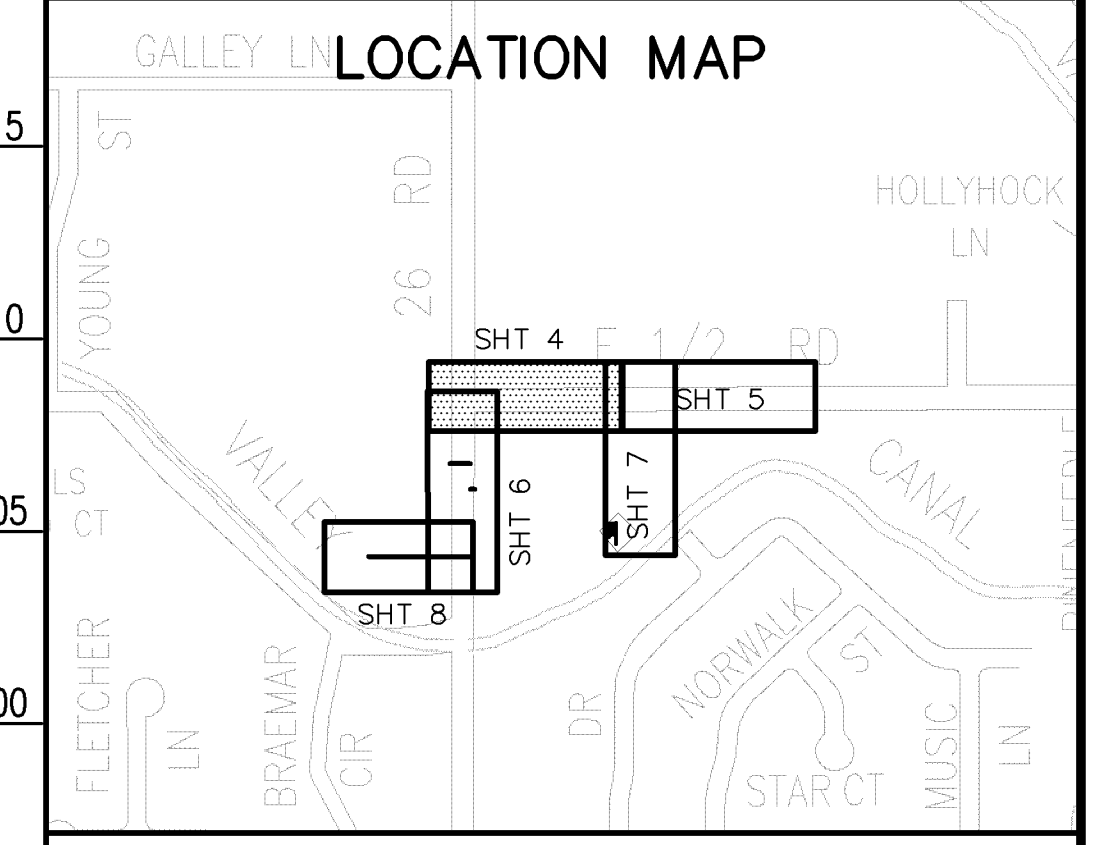
CONSTRUCTION NOTES

- ① 202 - REMOVE PIPE (EXISTING 10" STUB)
- ② 102 - CONNECT TO EXISTING MANHOLE (8" PIPE)
CONTRACTOR SHALL UTILIZE EXISTING BOOT
- ③ 102.9A - 8" GRAVITY SEWER PIPE (SDR-35 PVC). BACKFILL TRENCH WITH NATIVE MATERIALS MEETING 103.16 EARTH BACKFILL MATERIAL.
- ④ 102.11 - CONSTRUCT SANITARY SEWER MANHOLE (48" I.D.) (SEE CITY OF GRAND JUNCTION STANDARD DETAIL SS-02).
- ⑤ 108.2 - 12" IRRIGATION PIPE (SDR-35 PVC) WITH 2'X2'X6" CONCRETE HEADWALL AT EITHER END. THE CONTRACT UNIT PRICE FOR 12" IRRIGATION PIPE SHALL INCLUDE THE COST OF THE HEADWALLS. SEE HEADWALL DETAIL THIS SHEET.
- ⑥ 103.10 - CUTOFF WALL. THE CONTRACT UNIT PRICE FOR GRAVITY SEWER PIPE SHALL INCLUDE THE COST OF CUTOFF WALLS.
- ⑦ 102/103/104 - 4" SEWER SERVICE TAP TO PROPERTY LINE (SEE CITY OF GRAND JUNCTION TYPICAL SERVICE "Y" CONNECTION SS-06)
- ⑧ 103.3 - ASPHALT REMOVAL. CUT AND REMOVE PAVEMENT AS SHOWN. FOR LINE A, PAVEMENT WILL BE REMOVED FROM THE NORTH EDGE TO THE CROWN. SERVICE TRENCH WIDTH SHALL BE 6" MAXIMUM.
- ⑨ 103.18 - PAVEMENT REPLACEMENT:
304 - CLASS 6 ABC, 6" DEPTH
401 - HOT BITUMINOUS PAVEMENT (GRADING SX) (4" THICK) (SEE CITY OF GRAND JUNCTION STANDARD DETAIL GU-03)
- ⑩ 304 - AGGREGATE BASE COURSE (CLASS 6) (4" THICK) (COMPACT TO 90% AASHTO T-99)
- ⑪ CONTRACTOR IS RESPONSIBLE FOR REPAIR COSTS ASSOCIATED WITH ANY/ALL DAMAGE TO PRIVATE PROPERTY BEHIND RIGHT-OF-WAY LINE.
- ⑫ 202 - REMOVE PIPE (EXISTING 12" CMP IRRIGATION)
- ⑬ 102 - ARRANGE MANHOLE CONE SECTION TO AVOID TRAVELED WHEEL PATH



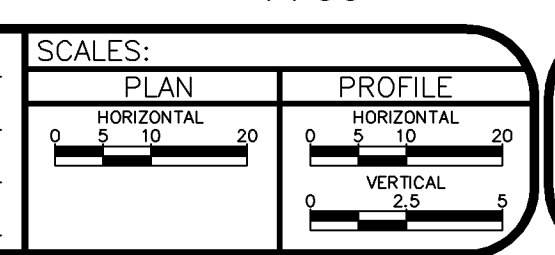
SEE SHEET 5

MATCH LINE



NOTE: NOTIFY AFFECTED UTILITY VENDOR 48 HOURS PRIOR TO EXCAVATIONS THAT WILL EXPOSE UTILITY LINES. THE COVER SHEET WILL HAVE A LISTING OF UTILITY VENDORS AND TELEPHONE NUMBERS.

REVISION	DESCRIPTION	DATE	DRAWN BY	JCS	DATE	2005
REVISION	AS BUILT PER M.A. CONST.	3-9-06	DESIGNED BY		DATE	
REVISION			CHECKED BY		DATE	
REVISION			APPROVED BY		DATE	

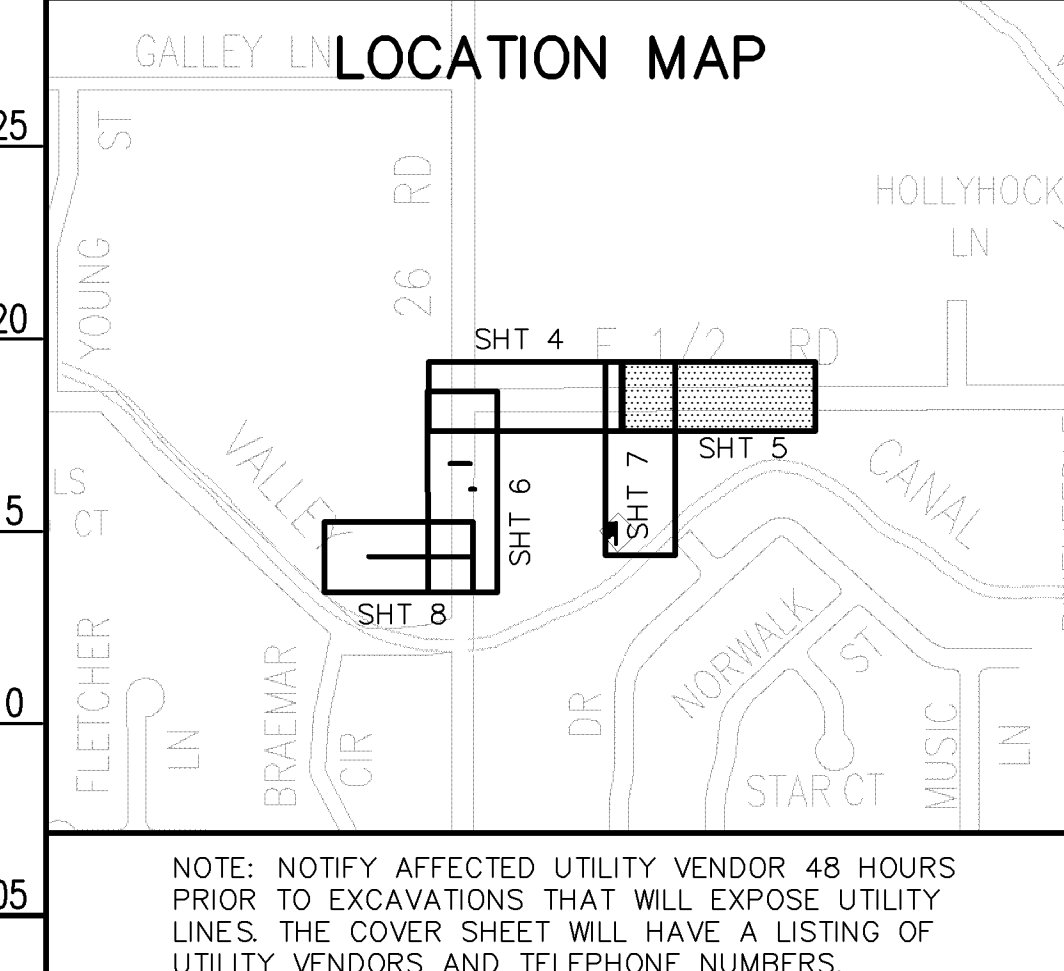
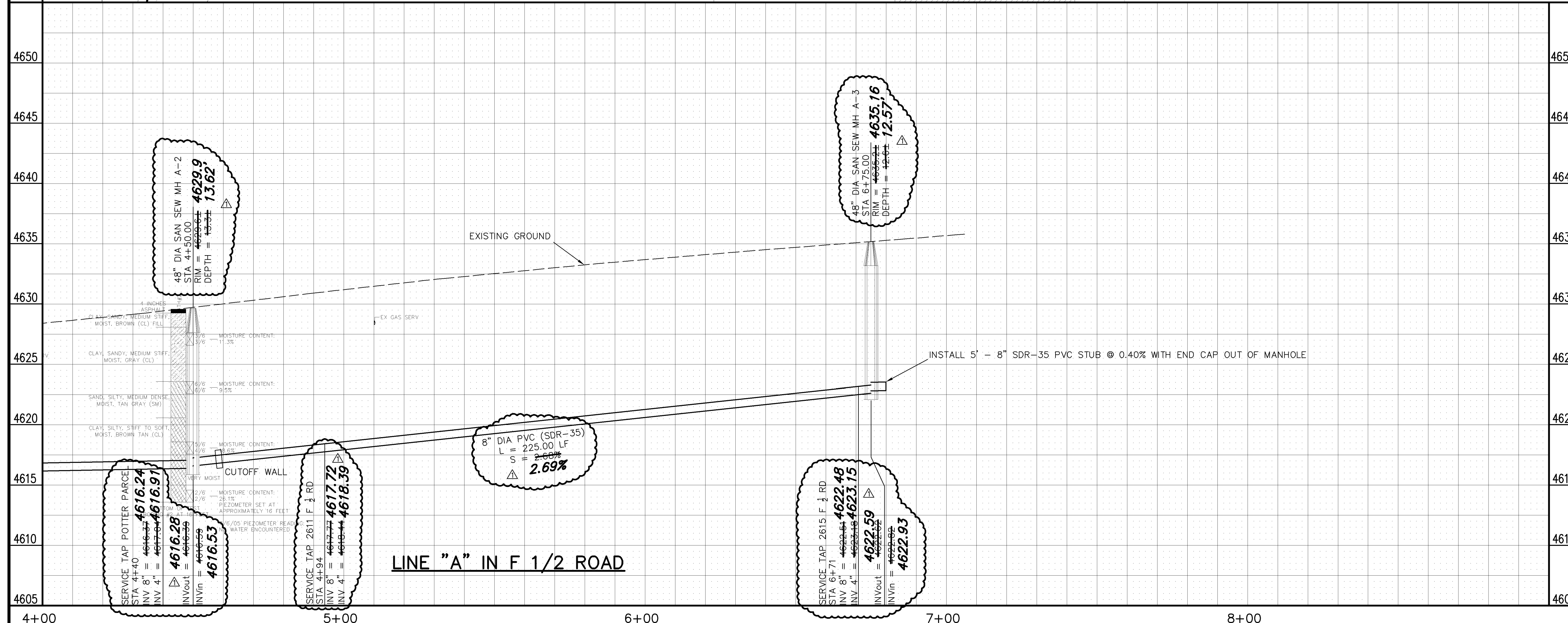
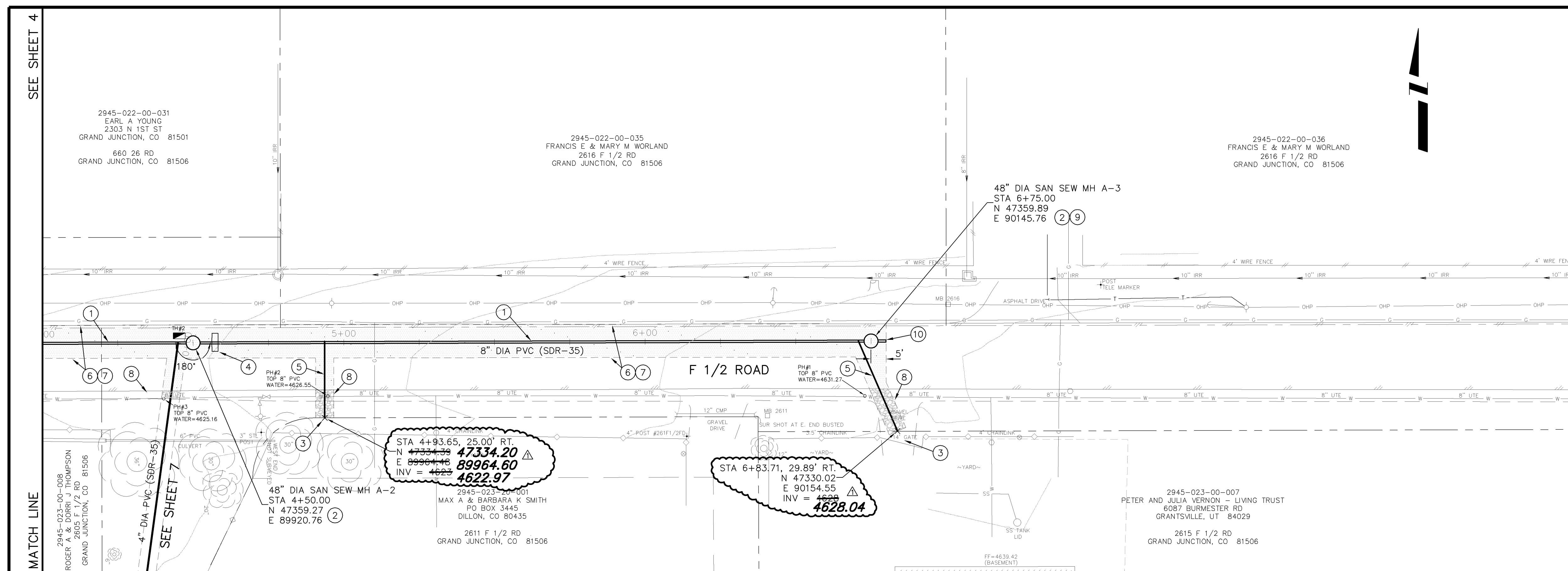


PUBLIC WORKS AND UTILITIES ENGINEERING DIVISION

26 ROAD AND F 1/2 ROAD NEIGHBORHOOD S.I.D. SANITARY SEWER PLAN AND PROFILES STA 0+00 TO STA 4+00

CONSTRUCTION NOTES

- ① 102.9A - 8" GRAVITY SEWER PIPE (SDR-35 PVC). BACKFILL TRENCH WITH NATIVE MATERIALS MEETING 103.16 EARTH BACKFILL MATERIAL.
- ② 102.11 - CONSTRUCT SANITARY SEWER MANHOLE (48" I.D.) (SEE CITY OF GRAND JUNCTION STANDARD DETAIL SS-02).
- ③ CONTRACTOR IS RESPONSIBLE FOR REPAIR COSTS ASSOCIATED WITH ANY/ALL DAMAGE TO PRIVATE PROPERTY BEHIND RIGHT-OF-WAY LINE.
- ④ 103.10 - CUTOFF WALL. THE CONTRACT UNIT PRICE FOR GRAVITY SEWER PIPE SHALL INCLUDE THE COST OF CUTOFF WALLS.
- ⑤ 102/103/104 - 4" SEWER SERVICE TAP TO PROPERTY LINE (SEE CITY OF GRAND JUNCTION TYPICAL SERVICE "Y" CONNECTION SS-06)
- ⑥ 103.3 - ASPHALT REMOVAL: CUT AND REMOVE PAVEMENT AS SHOWN. FOR LINE A, PAVEMENT WILL BE REMOVED FROM THE NORTH EDGE TO THE CROWN. SERVICE TRENCH WIDTH SHALL BE 6' MAXIMUM.
- ⑦ 103.18 - PAVEMENT REPLACEMENT:
304 - CLASS 6 ABC, 6" DEPTH
401 - HOT BITUMINOUS PAVEMENT (GRADING SX) (4" THICK) (SEE CITY OF GRAND JUNCTION STANDARD DETAIL GU-03)
- ⑧ 304 - AGGREGATE BASE COURSE (CLASS 6) (4" THICK) (COMPACT TO 90% AASHTO T-99)
- ⑨ 102 - ARRANGE MANHOLE CONE SECTION TO AVOID TRAVELED WHEEL PATH
- ⑩ INSTALL 5' - 8" SDR-35 PVC STUB WITH END CAP OUT OF MANHOLE



REVISION	DESCRIPTION	DATE	DRAWN BY	DATE
AS BUILT PER M.A. CONST.		3-9-06	JCS	2005

SCALES:
PLAN: 1" = 20'
PROFILE: HORIZONTAL 1" = 20', VERTICAL 1" = 5'

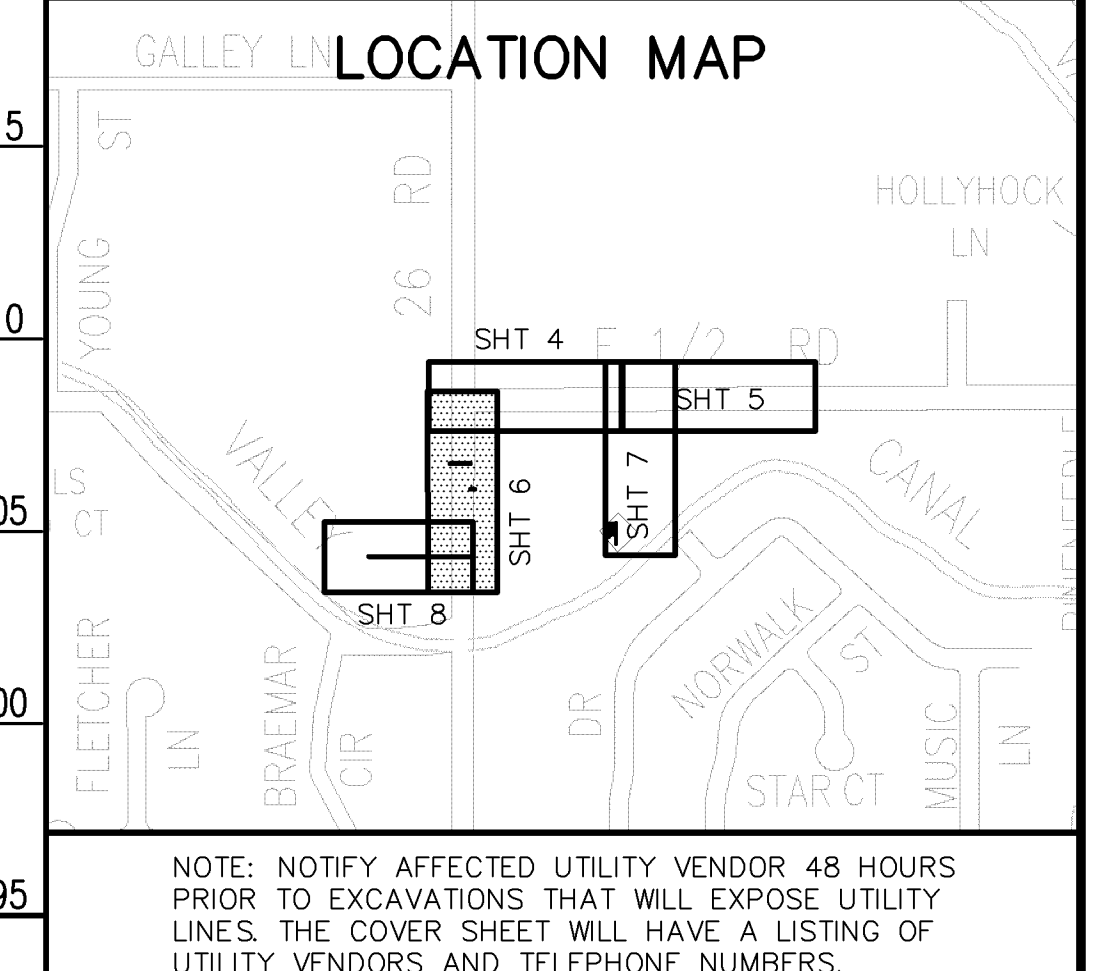
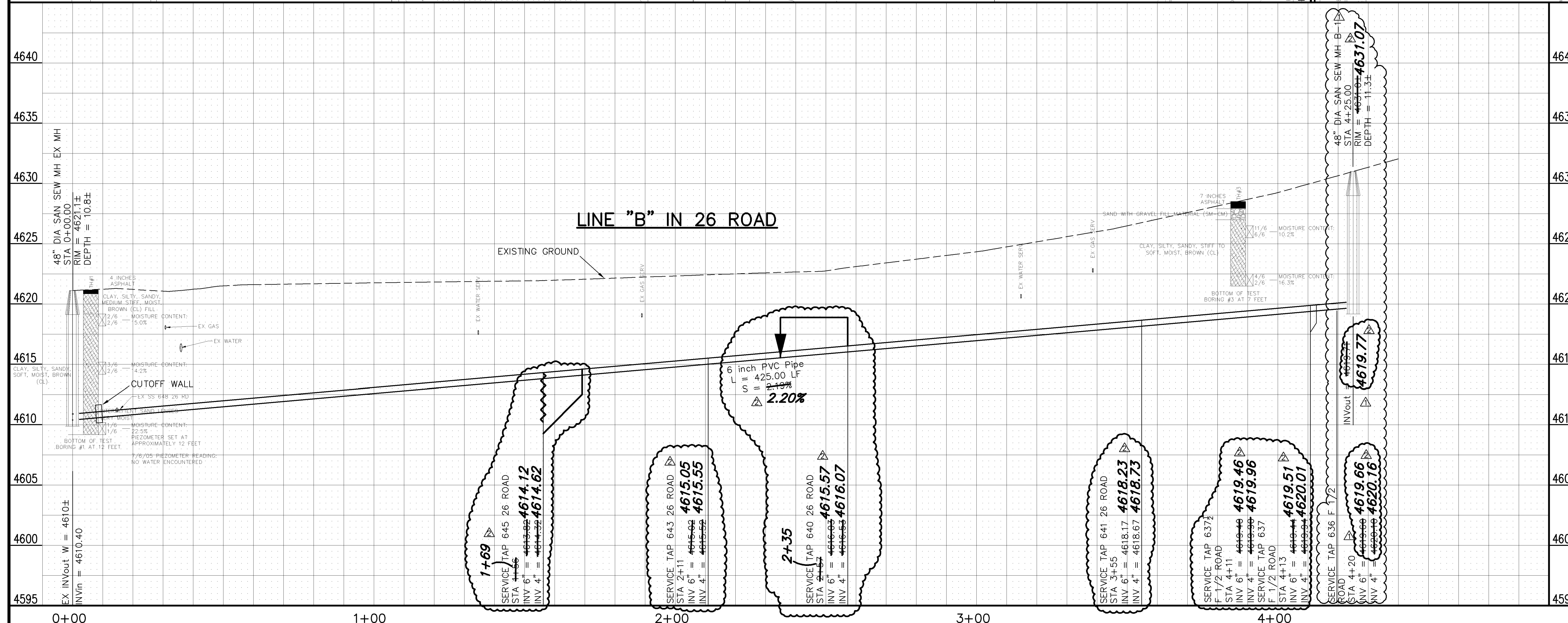
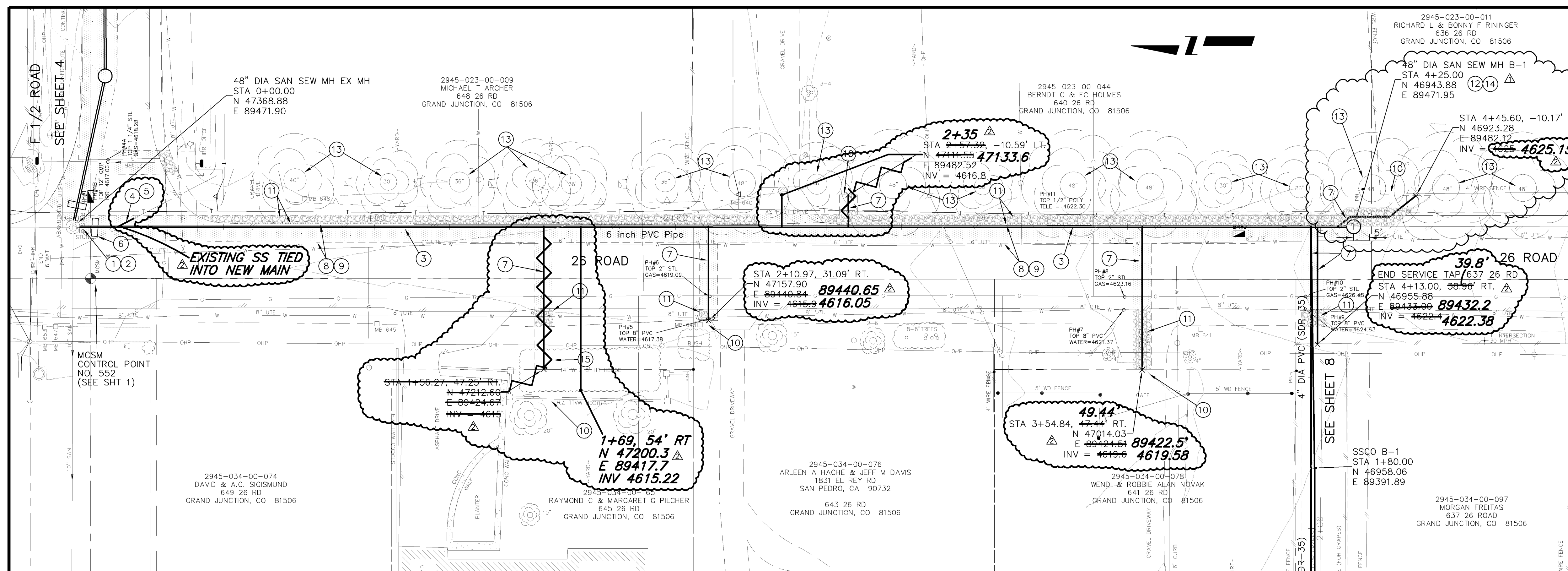
CITY OF Grand Junction COLORADO

PUBLIC WORKS AND UTILITIES ENGINEERING DIVISION

26 ROAD AND F 1/2 ROAD NEIGHBORHOOD S.I.D. SANITARY SEWER PLAN AND PROFILES STA 4+00 TO STA 9+00

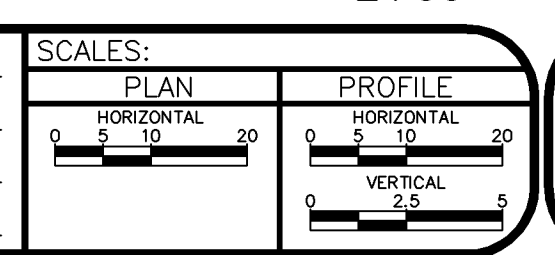
CONSTRUCTION NOTES

- ① 202 - REMOVE PIPE (EXISTING 10" STUB)
- ② 102 - CONNECT TO EXISTING MANHOLE (6" PIPE)
CONTRACTOR SHALL UTILIZE EXISTING BOOT
- ③ 102.9A - 6" GRAVITY SEWER PIPE (SDR-35 PVC). BACKFILL TRENCH WITH NATIVE MATERIALS MEETING 103.16 EARTH BACKFILL MATERIAL.
- ④ 202 - REMOVE PIPE (EXISTING 4" SERVICE LINE)
REMOVE PIPE AS NEEDED TO FACILITATE SANITARY SEWER CONSTRUCTION.
- ⑤ 102/103/104 - 4" SEWER SERVICE TAP. AFTER PRESSURE TESTING NEW LINE INSTALL SERVICE TAP, ABANDON SERVICE LINE BETWEEN NEW MAIN AND EXISTING 10" MAIN TO THE NORTH BY INSTALLING A WATERTIGHT CAP, AND CONNECT BACK TO EXISTING SERVICE LINE. THE CONTRACT UNIT PRICE FOR 4" SEWER SERVICE TAP SHALL INCLUDE THE COST OF ALL MATERIALS, NECESSARY CONNECTIONS, LINE ABANDONMENTS, AND LABOR TO RESTORE THE EXISTING SERVICE.
- ⑥ 103.10 - CUTOFF WALL. THE CONTRACT UNIT PRICE FOR GRAVITY SEWER PIPE SHALL INCLUDE THE COST OF CUTOFF WALLS.
- ⑦ 102/103/104 - 4" SEWER SERVICE TAP TO PROPERTY LINE (SEE CITY OF GRAND JUNCTION TYPICAL SERVICE "Y" CONNECTION SS-06)
- ⑧ 103.3 - ASPHALT REMOVAL: CUT AND REMOVE PAVEMENT AS SHOWN. FOR LINE B PAVEMENT WILL BE REMOVED FROM THE EAST EDGE 6' TO THE WEST. SERVICE TRENCH WIDTH SHALL BE 6' MAXIMUM.
- ⑨ 103.18 - PAVEMENT REPLACEMENT:
304 - CLASS 6 ABC, 10" DEPTH
401 - HOT BITUMINOUS PAVEMENT (GRADING SX) (4" THICK) (SEE CITY OF GRAND JUNCTION STANDARD DETAIL GU-03)
- ⑩ CONTRACTOR IS RESPONSIBLE FOR REPAIR COSTS ASSOCIATED WITH ANY/ALL DAMAGE TO PRIVATE PROPERTY BEHIND RIGHT-OF-WAY LINE.
- ⑪ 304 - AGGREGATE BASE COURSE (CLASS 6) (4" THICK) (COMPACT TO 90% AASHTO T-99)
- ⑫ 102.11 - CONSTRUCT DEAD END SANITARY SEWER MANHOLE (48" I.D.) (SEE CITY OF GRAND JUNCTION STANDARD DETAIL SS-02).
- ⑬ PROTECT TREE.
- ⑭ 401 - EXTEND ASPHALT TO 1 FOOT BEYOND RING AND COVER
- ⑮ 202 - TRIM AND REMOVE HEDGE
CONTRACTOR MAY NEED TO TRIM AND REMOVE HEDGE AS NEEDED TO FACILITATE SERVICE LINE INSTALLATION. COST FOR THE WORK SHALL BE INCLUDED IN CLEARING AND GRUBBING.



REVISION	DESCRIPTION	DATE	DRAWN BY	DATE
REVISION A	MOVED MH B-1 AND SERVICE TAP FOR 636 F 1/2 ROAD 5' NORTH	8-4-05	JCS	2005
REVISION B	AS BUILT PER M.A. CONST.	3-9-06		

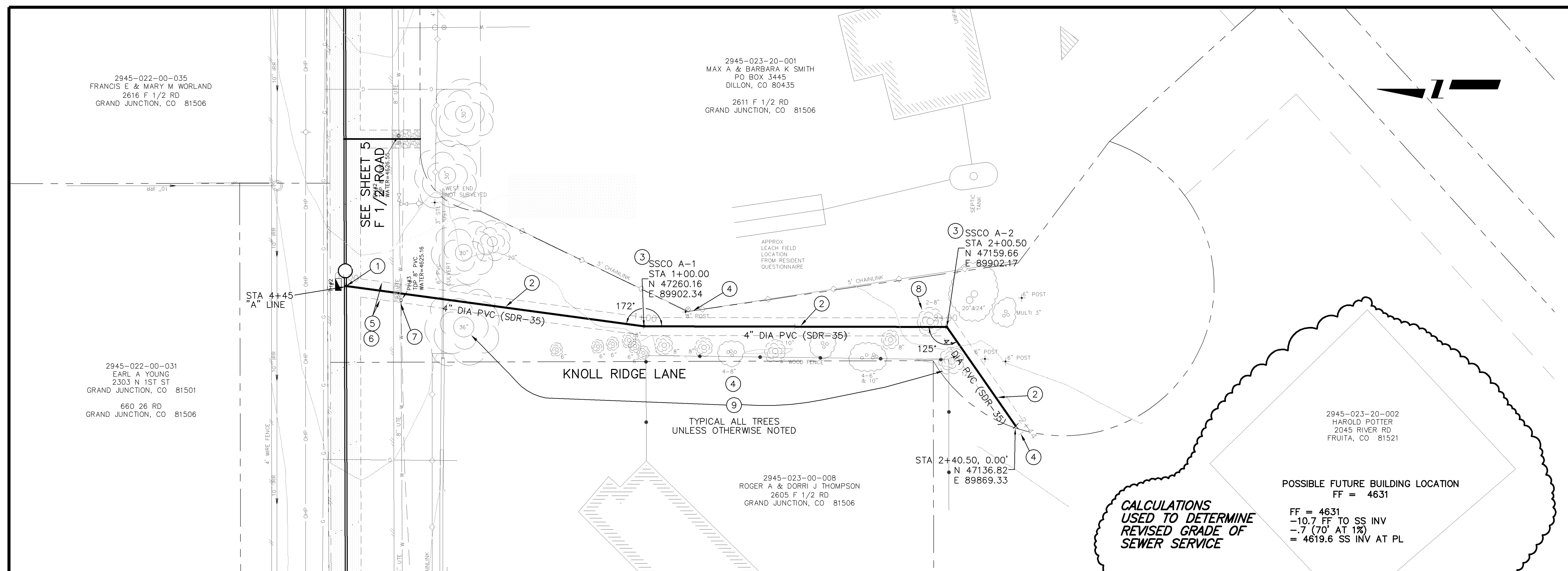
DESIGNED BY	DATE	CHECKED BY	DATE	APPROVED BY	DATE



PUBLIC WORKS AND UTILITIES ENGINEERING DIVISION

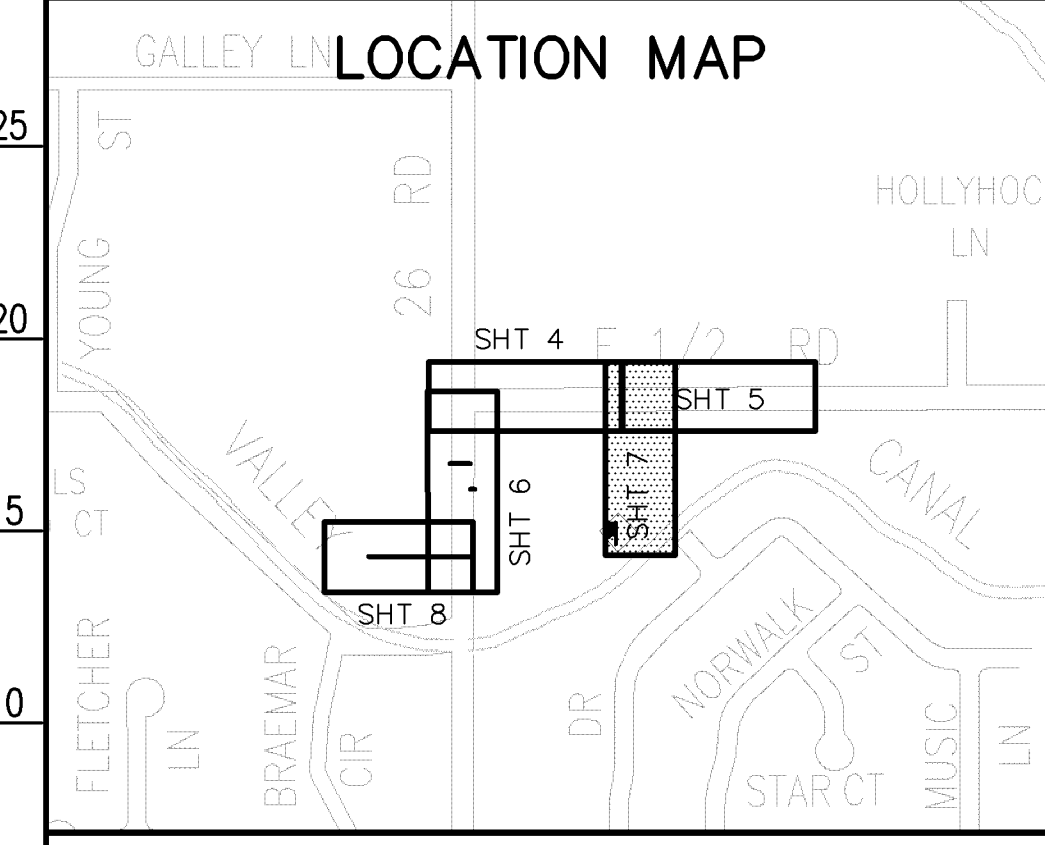
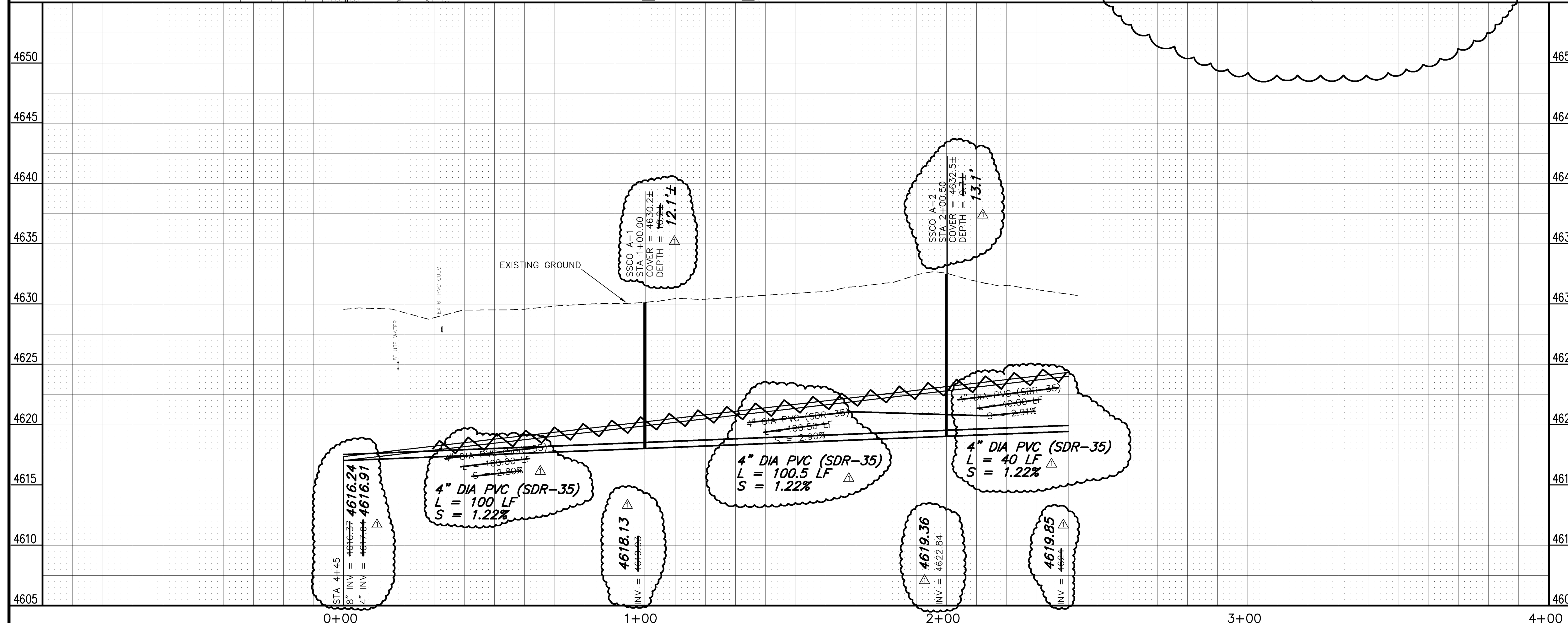
CONSTRUCTION NOTES

- ① 102/103/104 - 4" SEWER SERVICE TAP (SEE CITY OF GRAND JUNCTION TYPICAL SERVICE "Y" CONNECTION SS-06)
- ② 102.9A - 4" GRAVITY SEWER PIPE (SDR-35 PVC). BACKFILL TRENCH WITH NATIVE MATERIALS MEETING 103.16 EARTH BACKFILL MATERIAL COMPACTED TO 95% AASHTO T-99.
- ③ 102 - SANITARY SEWER SERVICE CLEANOUT WITH CASTINGS RING AND COVER (SEE CITY OF GRAND JUNCTION STANDARD DETAIL SS-07).
- ④ CONTRACTOR IS RESPONSIBLE FOR REPAIR COSTS ASSOCIATED WITH ANY/ALL DAMAGE TO PRIVATE PROPERTY BEHIND RIGHT-OF-WAY LINE.
- ⑤ 103.3 - ASPHALT REMOVAL. CUT AND REMOVE PAVEMENT AS SHOWN. SERVICE TRENCH WIDTH SHALL BE 6' MAXIMUM.
- ⑥ 103.18 - PAVEMENT REPLACEMENT:
304 - CLASS 6 ABC, 6" DEPTH
401 - HOT BITUMINOUS PAVEMENT (GRADING SX) (3" THICK) (SEE CITY OF GRAND JUNCTION STANDARD DETAIL GU-03)
- ⑦ 304 - AGGREGATE BASE COURSE (CLASS 6) (4" THICK) (COMPACT TO 90% AASHTO T-99)
- ⑧ 202 - REMOVE TREE
CONTRACTOR MAY NEED TO REMOVE TREE TO FACILITATE SEWER LINE INSTALLATION. COST FOR THE WORK SHALL BE INCLUDED IN CLEARING AND GRUBBING.
- ⑨ PROTECT TREE



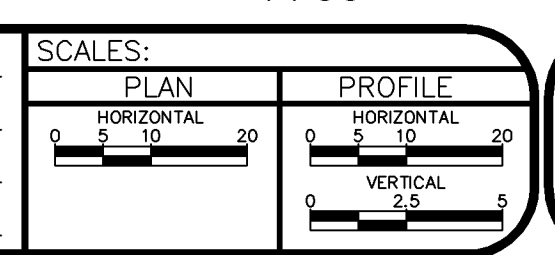
CALCULATIONS USED TO DETERMINE REVISED GRADE OF SEWER SERVICE

FF = 4631
 -10.7 FF TO SS INV
 -.7 (70' AT 1%)
 = 4619.6 SS INV AT PL



NOTE: NOTIFY AFFECTED UTILITY VENDOR 48 HOURS PRIOR TO EXCAVATIONS THAT WILL EXPOSE UTILITY LINES. THE COVER SHEET WILL HAVE A LISTING OF UTILITY VENDORS AND TELEPHONE NUMBERS.

REVISION	DESCRIPTION	DATE	DRAWN BY	DATE
AS BUILT PER M.A. CONST.		3-9-06	JCS	2005

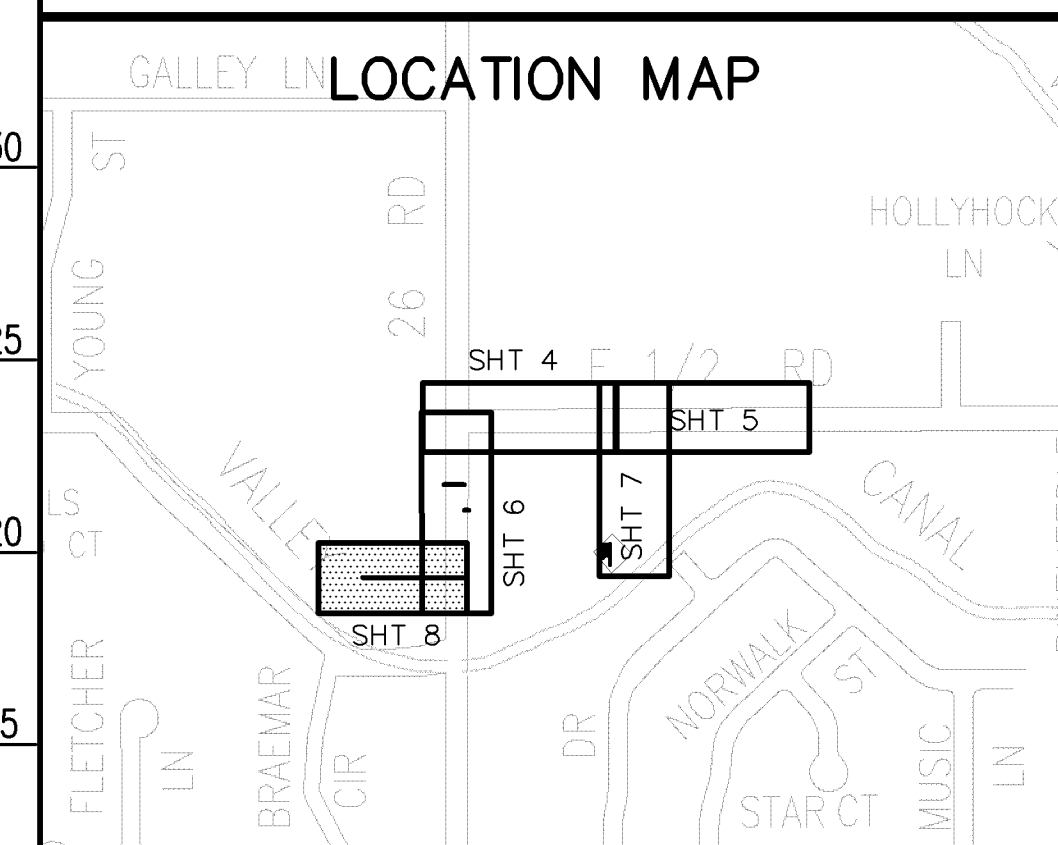
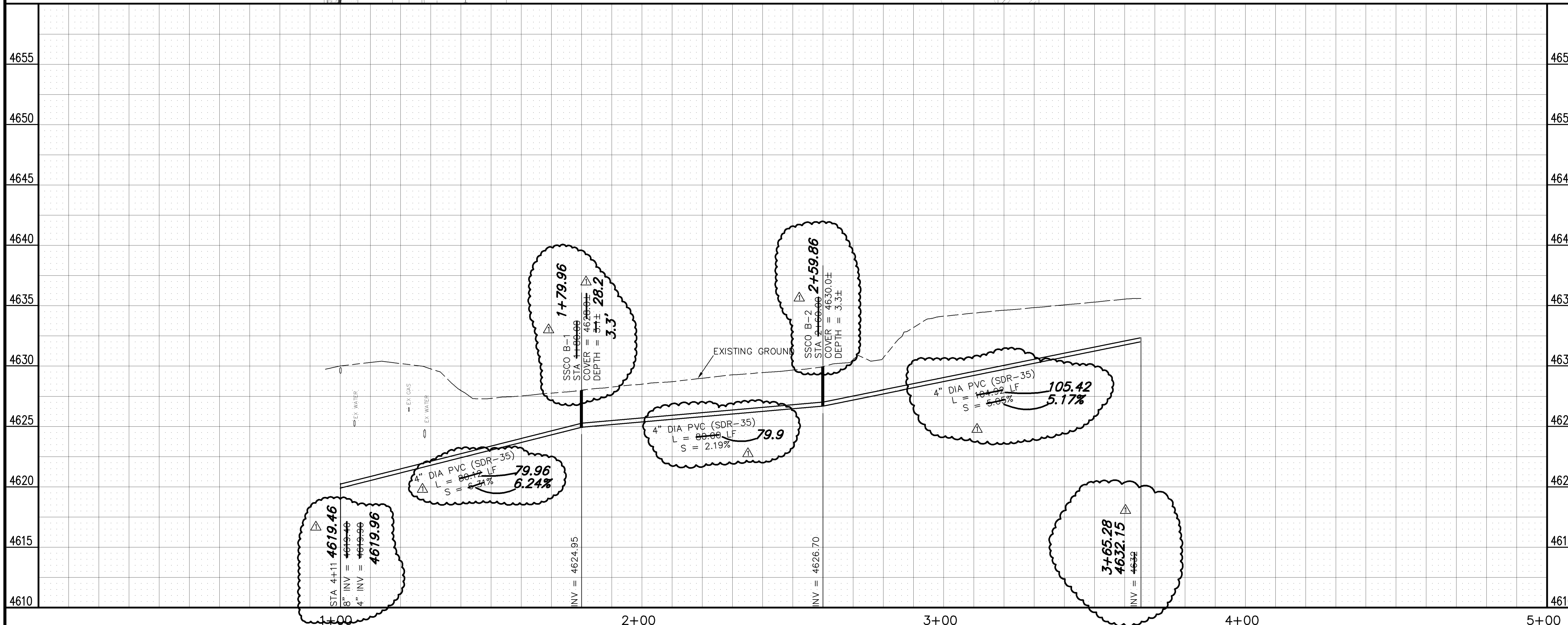
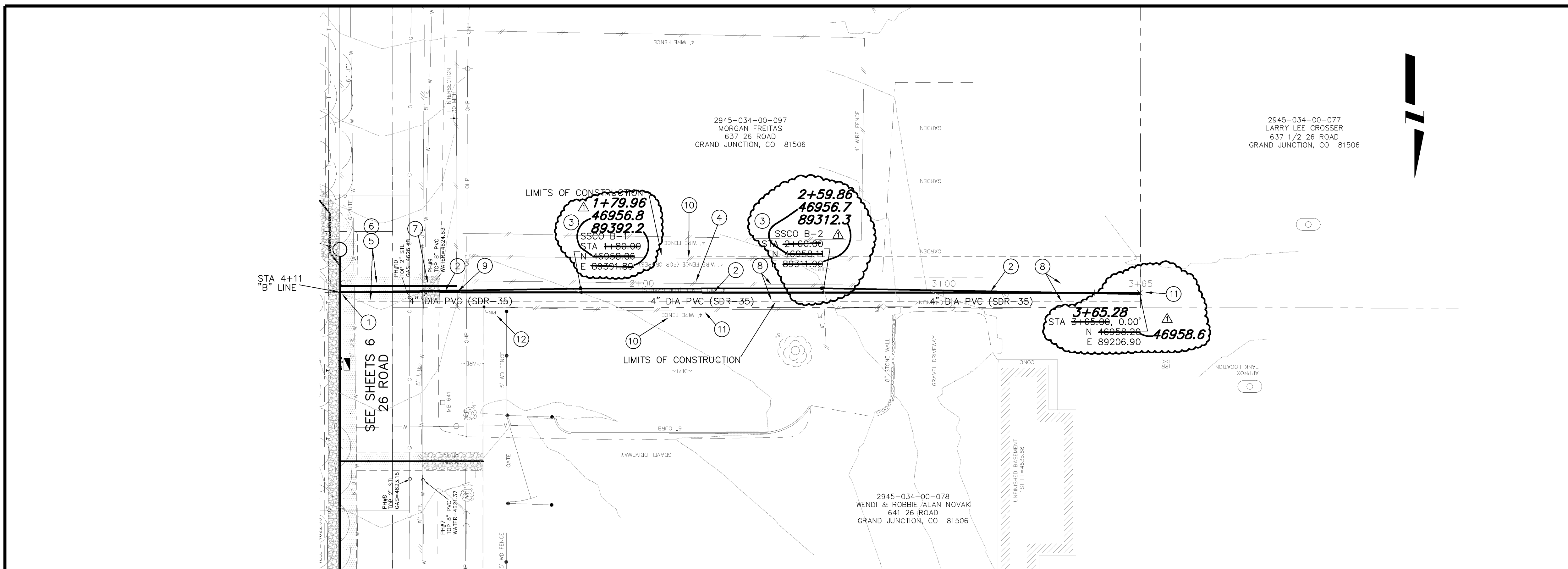


PUBLIC WORKS AND UTILITIES ENGINEERING DIVISION

26 ROAD AND F 1/2 ROAD NEIGHBORHOOD S.I.D. SANITARY SEWER PLAN AND PROFILES SEWER SERVICE FOR POTTER PARCEL

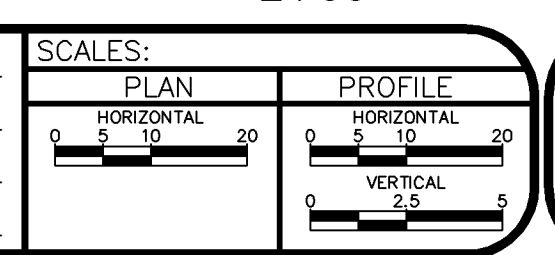
CONSTRUCTION NOTES

- ① 102/103/104 - 4" SEWER SERVICE TAP (SEE CITY OF GRAND JUNCTION TYPICAL SERVICE "Y" CONNECTION)
- ② 102.9A - 4" GRAVITY SEWER PIPE (SDR-35 PVC). BACKFILL TRENCH WITH NATIVE MATERIALS MEETING 103.16 EARTH BACKFILL MATERIAL.
- ③ 102 - SANITARY SEWER SERVICE CLEANOUT WITH IRRIGATION CONTROL BOX
- ④ 210.04 - RESET FENCE (128 LF) (GRAPE ARBOR)
- ⑤ 103.3 - ASPHALT REMOVAL: CUT AND REMOVE PAVEMENT AS SHOWN. GENERALLY SERVICE TRENCH WIDTH SHALL BE 6' MAXIMUM.
- ⑥ 103.18 - PAVEMENT REPLACEMENT:
304 - CLASS 6 ABC, 6" DEPTH
401 - HOT BITUMINOUS PAVEMENT (GRADING SX) (3" THICK) (SEE CITY OF GRAND JUNCTION STANDARD DETAIL GU-03)
- ⑦ 304 - AGGREGATE BASE COURSE (CLASS 6) (4" THICK) (COMPACT TO 90% AASHTO T-99)
- ⑧ STRIP AND STOCKPILE 6" TOPSOIL IN AREA OF DISTURBANCE. REDISTRIBUTE TOPSOIL AFTER PIPE INSTALLATION/BACKFILL. THE CONTRACT UNIT PRICE FOR 4" GRAVITY SEWER PIPE SHALL INCLUDE THE COST OF STRIPING, STOCKPILING, AND REDISTRIBUTING TOPSOIL.
- ⑨ 210.04 - RESET FENCE (15 LF)
- ⑩ PROTECT EXISTING FENCE
- ⑪ CONTRACTOR IS RESPONSIBLE FOR REPAIR COSTS ASSOCIATED WITH ANY/ALL DAMAGE TO PRIVATE PROPERTY BEHIND RIGHT-OF-WAY LINE.
- ⑫ PROTECT PROPERTY PIN IN PLACE.



NOTE: NOTIFY AFFECTED UTILITY VENDOR 48 HOURS PRIOR TO EXCAVATIONS THAT WILL EXPOSE UTILITY LINES. THE COVER SHEET WILL HAVE A LISTING OF UTILITY VENDORS AND TELEPHONE NUMBERS.

REVISION	DESCRIPTION	DATE	DRAWN BY	JCS	DATE	2005
REVISION	AS BUILT PER M.A. CONST.	3-9-06	DESIGNED BY		DATE	
REVISION			CHECKED BY		DATE	
REVISION			APPROVED BY		DATE	



PUBLIC WORKS
AND UTILITIES
ENGINEERING DIVISION

26 ROAD AND F 1/2 ROAD NEIGHBORHOOD S.I.D.
SANITARY SEWER PLAN AND PROFILES
SEWER SERVICE FOR 637 1/2 26 ROAD

Performance Standards
 The general requirements for erosion control work shall be as follows:
 1. All grading shall be designed, constructed and completed in such a manner so that exposed area of any disturbed land shall be limited to the shortest time period.
 2. Temporary erosion control facilities shall be removed and all disturbed areas graded and stabilized with permanent soil erosion control measures pursuant to approved plans and specifications.

During Construction (Temporary Measures)
 1. Erosion Logs: The use of a single row of erosion logs shall be installed from the edge of ditch or swale unless specified otherwise. Installation shall be in accordance with the detail as shown on the plans. All stockpiles of construction earth materials and excavation spoil must be encircled with erosion control logs during any/all storm events generating runoff.

After Construction (Permanent Measures)
 1. Landscaping / Seeding: All disturbed areas not otherwise landscaped or paved shall be hydroseeded as per plans and project specifications.

Maintenance
 1. The Contractor shall conduct routine checks of all erosion control measures to determine if repairs or sediment removal is necessary.
 2. After each rainfall or moderate snow melt, erosion control measures are to be checked. The Contractor shall be responsible for maintaining all erosion control measures.
 3. Silt and sediment shall be removed after each substantial rainfall. Deposits must be removed when they reach a height of one-half of the barrier.
 4. When temporary measures are to be removed, any silt and sediment deposits shall be removed and spread evenly in open areas and seeded as necessary.

General Notes
 1. At all times during construction, erosion and sediment control shall be maintained by the Contractor.
 2. Details shown are schematic only. Adjust as necessary to fit field conditions.
 3. Erosion logs shall be placed to avoid runoff flowing between, around or under logs. Gates shall be anchored with 2" x 2" x 2" wooden stakes or #4 reinforcing bars, two per log (see details for further instructions).
 4. The Contractor shall have a water truck available at all times to assist in controlling dust and wind erosion.

INSTALL EROSION CONTROL LOG
ACROSS BORROW-DITCH/SWALE

INSTALL EROSION CONTROL LOG
ACROSS BORROW-DITCH/SWALE

INSTALL EROSION CONTROL LOG
ACROSS BORROW-DITCH/SWALE

F 1/2 ROAD

KNOLL RIDGE LANE

26 ROAD

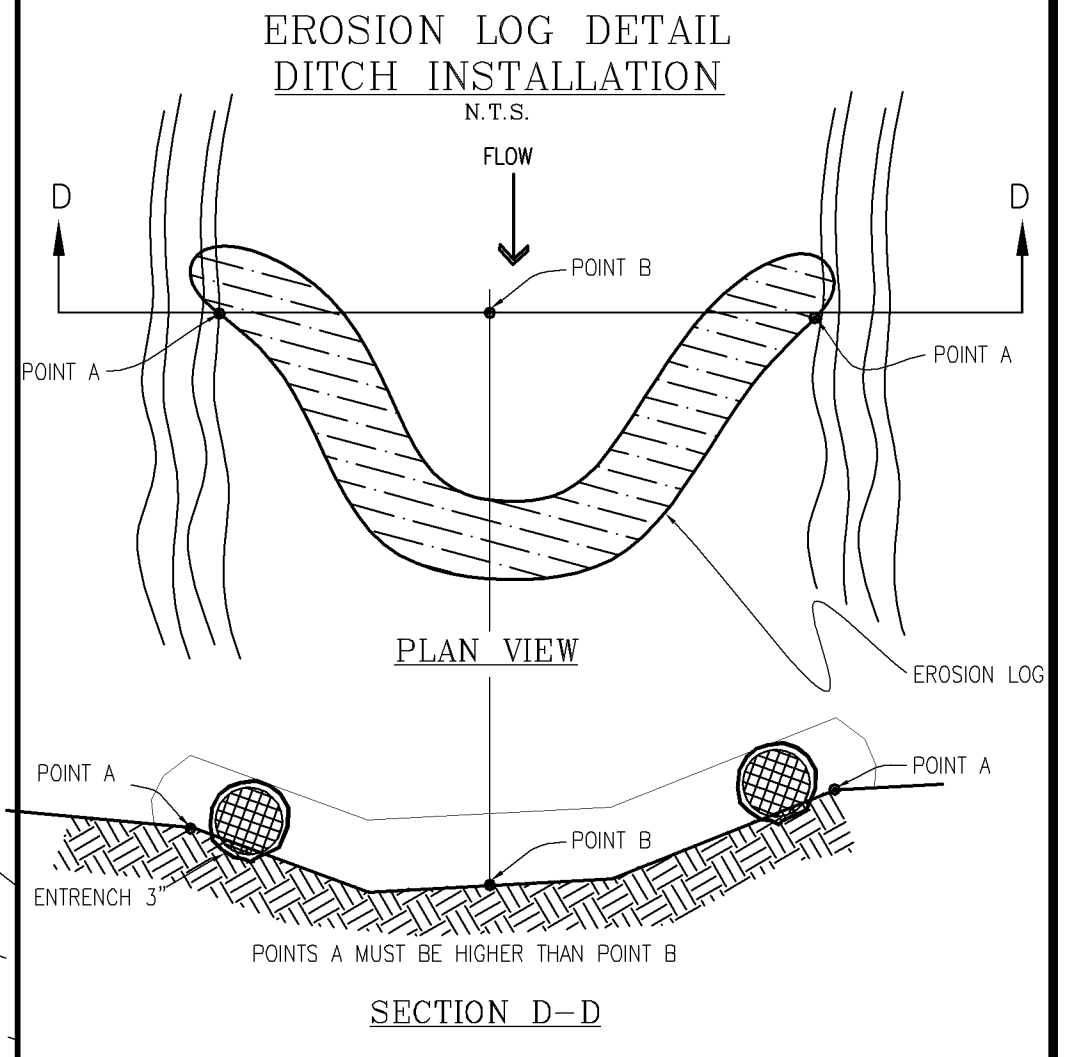
GRAND VALLEY CANAL

GRAND VALLEY CANAL

NORTHRIDGE DRIVE

NORTHRIDGE DRIVE

NORWALK STREET



REVISION	DESCRIPTION	DATE	DRAWN BY	DATE
1			XXX	2002
2				
3				
4				

SCALE:	PLAN
0	5
10	20



**PUBLIC WORKS
AND UTILITIES
ENGINEERING DIVISION**

**26 ROAD AND F 1/2 ROAD NEIGHBORHOOD S.I.D.
STORM WATER MANAGEMENT PLAN**