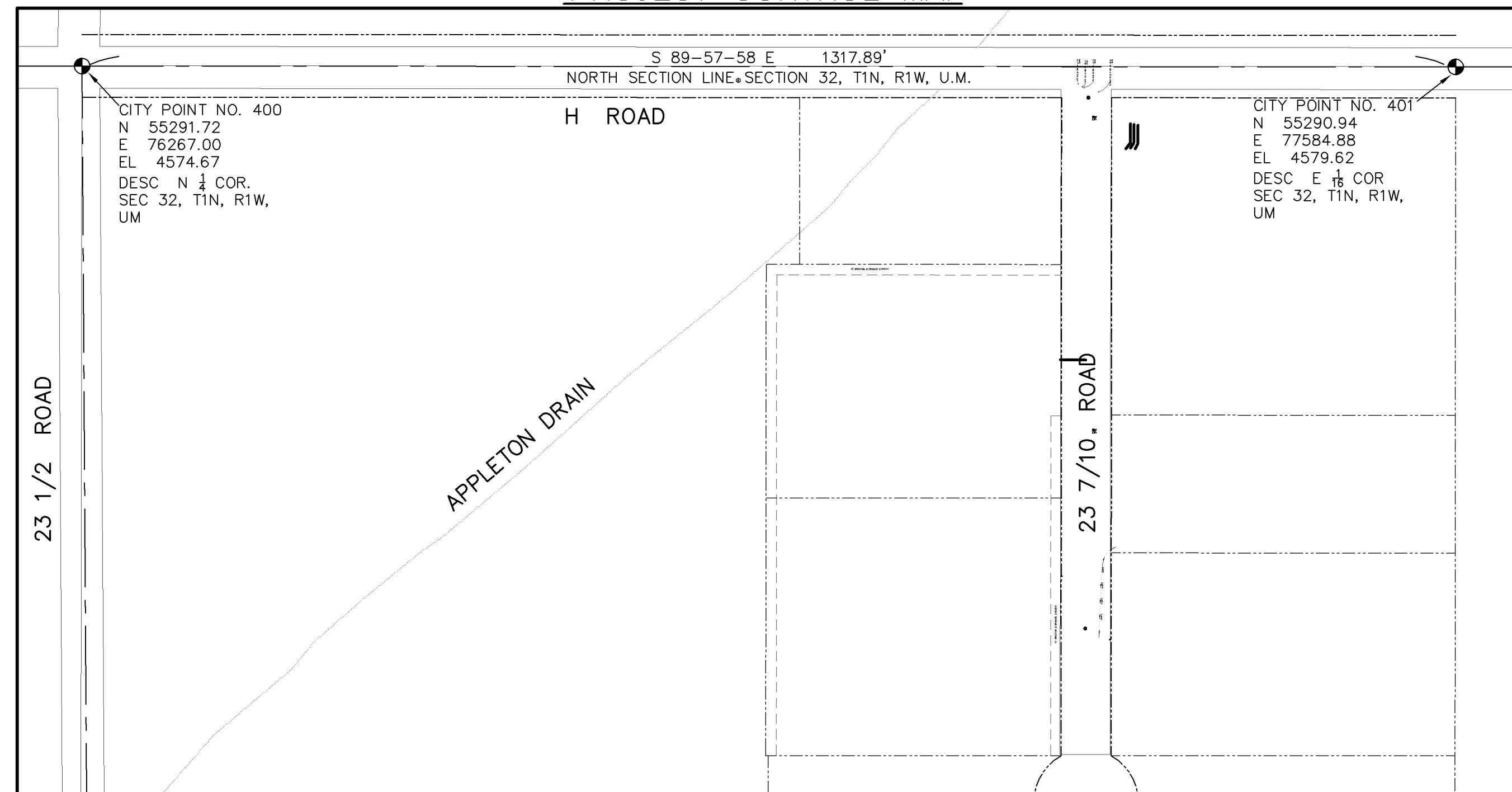


APPLETON NO. 3 SEWER IMPROVEMENT DISTRICT

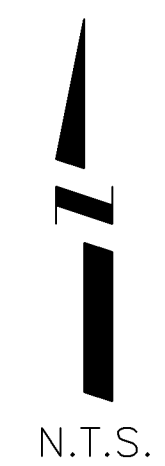
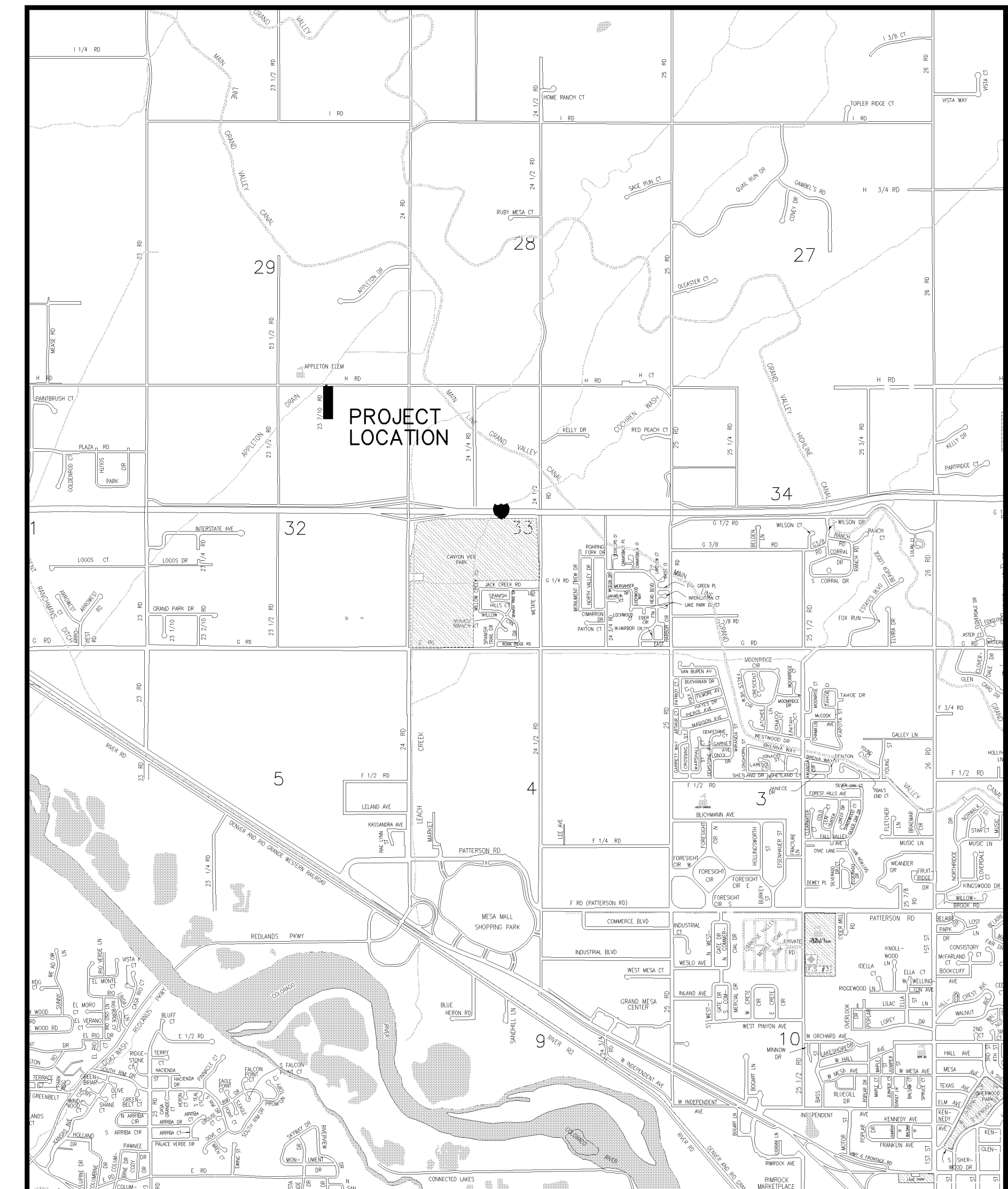
DECEMBER 23, 2005

- 1 ————— Cover Sheet
- 2 ————— Standard Abbreviations, Legend, and Symbols
- 3 ————— Summary of Approximate Quantities
- 4 ————— Sanitary Sewer Plan and Profile

PROJECT CONTROL MAP



VICINITY MAP



UTILITIES AND AGENCIES

AGENCY	NAME	POSITION	ROLE	MAILING ADDRESS	STREET ADDRESS	CITY, STATE	VOICE-WK	FAX
GRAND JUNCTION, CITY OF	JUSTIN VENSEL	PROJECT MANAGER	PROJECT MANAGER	250 N. 5th STREET	250 N. 5th STREET	GRAND JCT., CO 81501	(970) 256-4017	(970) 256-4022
GRAND JUNCTION, CITY OF	BRET GUILLORY	UTILITY ENGINEER	SANITARY SEWER	250 N. 5th STREET	250 N. 5th STREET	GRAND JCT., CO 81501	(970) 244-1590	(970) 256-4022
GRAND VALLEY IRRIGATION CO.	PHIL BERTRAND		IRRIGATION	688 26 ROAD	688 26 ROAD	GRAND JCT., CO 81506	(970) 242-2762	
BRESNAN	GLENN VANCIL		CABLE TV	2502 FORESIGHT CIRCLE	2502 FORESIGHT CIRCLE	GRAND JCT., CO 81504	(970) 245-8750	(970) 245-6803
U.S. WEST/QWEST	DAN WISEMAN	ENGINEER	TELEPHONE	2524 BLICHMANN AVE	2524 BLICHMANN AVE	GRAND JCT., CO 81504	(970) 244-4311	(970) 240-4349
UTE WATER	DARYL MOORE	ENGINEER	WATER	PO BOX 460		GRAND JCT., CO 81502	(970) 242-7491	(970) 242-9189
XCEL	STEVE LOPEZ	PROJECT MANAGER	GAS, ELECTRIC	2538 BLICHMANN AVE	2538 BLICHMANN AVE	GRAND JCT., CO 81504	(970) 244-2698	(970) 244-2661

AS BUILT
3-16-06



*Public Works & Utilities
Engineering Division*

NOTE: NOTIFY AFFECTED UTILITY VENDOR 48 HOURS PRIOR TO EXCAVATIONS THAT WILL EXPOSE UTILITY LINES. THE COVER SHEET WILL HAVE A LISTING OF UTILITY VENDORS AND TELEPHONE NUMBERS.

REVISION	DESCRIPTION	DATE
REVISION		
REVISION		
REVISION		
REVISION		

DRAWING STATUS:

- PROGRESS
- FINAL CONSTRUCTION DRAWINGS
- ASBUILT

DESIGNED BY:
Justin Vensel
JUSTIN VENSEL, PROJECT MANAGER
DATE: Dec 29, 2005

REVIEWED BY:
Bret Guillory
BRET GUILLORY, UTILITY ENGINEER
DATE: 12/29/05

AUTHORIZED FOR CONSTRUCTION
Michael G. McDill
MICHAEL G. MCDILL, CITY ENGINEER
DATE:

ACCEPTED AS CONSTRUCTED
JUSTIN VENSEL, PROJECT MANAGER
DATE:

APPLETON NO. 3 S.I.D., 12-23-05, Plan Set No. 1

ABBREVIATIONS

AASHTO	AMERICAN ASSOCIATION OF STATE HIGHWAY & TRANSPORTATION OFFICIALS
ABC	AGGREGATE BASE COURSE
AC	ASBESTOS CEMENT
AP	ANGLE POINT
ASB	ANCHORED STRAW BALES
ASP	ALUMINIZED STEEL PIPE
ASTM	AMERICAN SOCIETY FOR TESTING MATERIALS
AWWA	AMERICAN WATER WORKS ASSOCIATION
BC	BACK OF CURB
BF	BUTTERFLY VALVE
BOW	BACK OF WALK
BCR	BEGIN CURB RETURN
BOT	BOTTOM
BSWMP	BETTER STORM WATER MANAGEMENT PRACTICES
CH	CHORD
CAP	CORRUGATED ALUMINUM PIPE
CDOT	COLORADO DEPARTMENT OF TRANSPORTATION
CI	CAST IRON
C,G.& SW	CURB, GUTTER & SIDEWALK
C	CENTER LINE
CL	CLEAR
CMP	CORRUGATED METAL PIPE
CO	CLEAN OUT
COMB	COMBINATION (AS IN STORM SEWER AND SANITARY SEWER)
CONC	CONCRETE
CSM	CITY SURVEY MONUMENT
CSP	CORRUGATED STEEL PIPE
CU	COPPER
DI	DUCTILE IRON
DWY	DRIVEWAY
E	ELECTRIC
ECR	END CURB RETURN
EG	EDGE OF GUTTER
EL	ELEVATION
EP	EDGE OF PAVEMENT
EX	EXISTING
FB	FULL BODY
FC	FACE OF CURB
FG	FINISHED GRADE
F	FLOW LINE
FL	FLANGE
FM	FORCE MAIN
FO	FIBER OPTICS
FS	FAR SIDE
FTG	FOOTING
G	GAS
GB	GRADE BREAK
GM	GAS METER
GV	GATE VALVE
HBP	HOT BITUMINOUS PAVEMENT
HDPE	HIGH DENSITY POLYETHYLENE
INV	INVERT
IRR	IRRIGATION
L	LENGTH OF ARC
LC	LONG CHORD
LF	LINEAR FEET
LL	LONG ARC
LS	SHORT ARC
LT	LEFT
MB	MAILBOX
MCSM	MESA COUNTY SURVEY MONUMENT
MH	MANHOLE
MJ	MECHANICAL JOINT
MW	MILL WRAP
N/A	NOT APPLICABLE
NIC	NOT IN CONTRACT
NOP	NO ONE PERSON
NRCP	NON-REINFORCED CONCRETE PIPE
NS	NEAR SIDE
NTS	NOT TO SCALE
OHP	OVERHEAD POWER
OHT	OVERHEAD TELEPHONE
PC	POINT OF CURVATURE
PCC	POINT OF COMPOUND CURVATURE
PE	POLYETHYLENE
PERF	PERFORATED
PI	POINT OF INTERSECTION
PIP	PLASTIC IRRIGATION PIPE
POC	POINT ON CURVE
POT	POINT ON TANGENT
PR	PROPOSED
PRC	POINT OF REVERSE CURVATURE
PT	POINT OF TANGENCY
PVC	POLYVINYL CHLORIDE
R	RADIUS
RCP	REINFORCED CONCRETE PIPE
REQ'D	REQUIRED
RG	RESTRAINED GLANDS
RL	LONG RADIUS
ROW	RIGHT OF WAY
RP	RADIUS POINT
RR	RAIL ROAD
RS	SHORT RADIUS
RT	RIGHT
S	SLOPE
SAN	SANITARY
SC	SHORT CHORD
SCD	STANDARD CONTRACT DOCUMENTS
SCH	SCHEDULE
SF	SILT FENCE
SL	SECTION LINE
SSRB	STANDARD SPECIFICATIONS FOR ROAD & BRIDGE CONSTRUCTION
SSUJ	STANDARD SPECIFICATIONS FOR CONSTRUCTION OF UNDERGROUND UTILITIES
STA	STATION
STL	STEEL
STM	STORM
T	TELEPHONE
TAN	LENGTH OF TANGENT
TC	TOP OF CURB
TH	TEST HOLE
TV	TELEVISION
(TYP)	TYPICAL
UU	UNDERGROUND UTILITIES
VC	VERTICAL CURVE
VCP	VITRIFIED CLAY PIPE
VPC	VERTICAL POINT OF CURVATURE
VPCC	VERTICAL POINT OF COMPOUND CURVATURE
VPRC	VERTICAL POINT OF REVERSE CURVATURE
VPI	VERTICAL POINT OF INTERSECTION
VPT	VERTICAL POINT OF TANGENCY
W	WATER
Δ	DELTA ANGLE

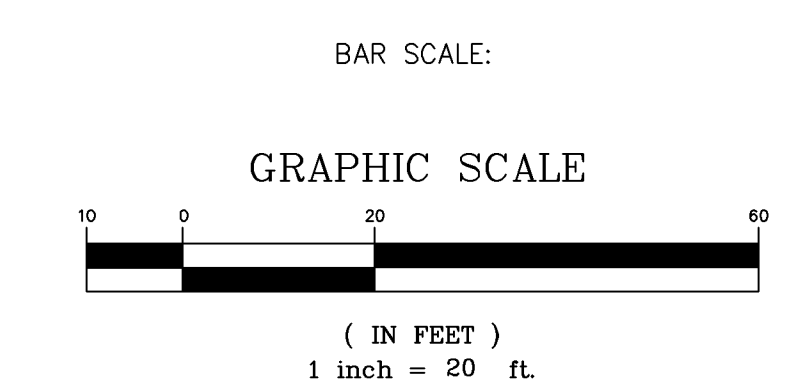
LEGEND

BSWMP DRAINAGE BASIN BOUNDARY	
BSWMP ANCHORED STRAW BALES	
BSWMP SILT FENCE	
BUILDING	
CONCRETE CURB AND GUTTER	
CONCRETE CURB, GUTTER, & SIDEWALK	
CONCRETE DITCH	
CONCRETE SIDEWALK	
CULVERT	
EARTH DITCH	
EDGE OF GRAVEL	
EDGE OF PAVEMENT	
FENCE (BARBED WIRE)	
FENCE (CHAIN LINK)	
FENCE (IRON)	
FENCE (PLASTIC)	
FENCE (WOOD)	
FENCE (WOVEN WIRE)	
GUARD RAIL	
HATCHING: INDICATES ASPHALT REMOVAL	
HATCHING: INDICATES CONCRETE REMOVAL	
HATCHING: INDICATES STAGING AREA	
LINE (CENTER OF IMPROVEMENTS)	
LINE (CITY LIMITS)	
LINE (CONTROL)	
LINE (EASEMENT)	
LINE (MONUMENT/SECTION)	
LINE (PROPERTY)	
LINE (RIGHT OF WAY)	
MATCH LINE	
PIPE (IRRIGATION)	
PIPE (SIPHON)	

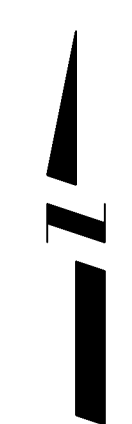
PROPOSED CONCRETE CURB AND GUTTER	
PROPOSED CONCRETE CURB, GUTTER, & SIDEWALK	
PROPOSED CONCRETE SIDEWALK	
PROPOSED "WET" UTILITIES (CONSTRUCTION NOTE WILL INDICATE TYPE, SIZE, AND MATERIAL OF NEW MAIN)	
ALL PROPOSED FEATURES NOT SHOWN IN LEGEND WILL BE SHOWN THE SAME AS THEIR EXISTING COUNTERPART, BUT INDICATED BY BOLDER LINETYPE	
RAIL ROAD	
RETAINING WALL	
STRIPING (CONTINUOUS WHITE)	
STRIPING (DASHED WHITE)	
STRIPING (CONTINUOUS YELLOW)	
STRIPING (DASHED YELLOW)	
TOP OF SLOPE	
CONTOUR LINES (SHOWN BETWEEN TOP & TOE)	
TOE OF SLOPE	
TRAFFIC DETECTOR LOOP	
UTILITY LINE (ABANDON) (THIS CASE A WATER LINE)	
UTILITY LINE (CABLE TV)	
UTILITY LINE (ELECTRIC)	
UTILITY LINE (FIBER OPTIC)	
UTILITY LINE (GAS)	
UTILITY LINE (HIGH VOLTAGE OVERHEAD POWER)	
UTILITY LINE (OVERHEAD POWER)	
UTILITY LINE (OVERHEAD TELEPHONE)	
UTILITY LINE (SANITARY SEWER)	
UTILITY LINE (SANITARY SEWER FORCE MAIN)	
UTILITY LINE (SANITARY SEWER SERVICE)	
UTILITY LINE (STORM SEWER)	
UTILITY LINE (STORM SEWER, PERFORATED)	
UTILITY LINE (STORM/SANITARY SEWER SEWER COMBINATION)	
UTILITY LINE (TELEPHONE)	
UTILITY LINE (WATER)	

SYMBOLS

BENCH MARK	
CATCH BASIN	
CLEAN OUT	
CURB STOP	
FIRE HYDRANT	
GUY WIRE ANCHOR	
HEADGATE	
IRRIGATION PUMP	
MAILBOX	
MANHOLE (ELECTRIC)	
MANHOLE (GAS)	
MANHOLE (SANITARY/STORM)	
MANHOLE (TELEPHONE)	
MANHOLE (TV)	
MANHOLE (WATER)	
METER (GAS)	
METER (WATER)	
PEDESTAL (TELEPHONE)	
PEDESTAL (TV)	
PROPERTY PIN	
PULL BOX	
REDUCER FITTING	
SIGN OR POST (SIGN TYPE NOTED)	
SPRINKLER HEAD	
STREET LIGHT	
SURVEY MONUMENT (CITY)	
SURVEY MONUMENT (TYPE NOTED)	
TEST HOLE	
TRAFFIC PAINT MARKING	
TRAFFIC SIGNAL POLE AND MAST ARM	
UTILITY POLE	
VALVE (GAS)	
VALVE (IRRIGATION)	
VALVE (WATER)	
VEGETATION (HEDGE OR BUSH)	
VEGETATION (TREE STUMP)	
VEGETATION (TREE) (CALIPER SIZE NOTED)	
WATER HYDRANT	
WEIR	
YARD LIGHT	



NORTH ARROW:



REVISION	DESCRIPTION	DATE
REVISION Δ		
REVISION Δ		
REVISION Δ		

DRAWN BY	JCS	DATE	4-02
DESIGNED BY		DATE	
CHECKED BY		DATE	
APPROVED BY		DATE	

SCALE	
PLAN	
HORIZ. 1"=20'	HORIZ.
VERT.	



PUBLIC WORKS AND UTILITIES ENGINEERING DIVISION

CITY OF GRAND JUNCTION STANDARD ABBREVIATIONS, LEGEND, AND SYMBOLS SHEET

Item No.	CDOT, City Ref.	Description	Quantity	Units
1	103.16	Import pit run Material, include excavation, haul, and disposal of unsuitable material.	1,040.	TON
2	108.2	6" Gravity Sewer Pipe (SDR-35) w/ native backfill. Includes granular bedding and haunching material and clay cut-off wall.	540.	LF
3	108.2	4" Gravity Sewer Pipe (SDR-35) w/ native backfill. Includes granular bedding and haunching material.	100.	LF
4	108.4	Sewer Service Tap, 6" X 4" Full Body Wye w/ 4" 45 degree bend.	4.	EA
5	108.05	Sanitary Sewer Basic Manhole w/ Components (48" I.D.)	1.	EA
6	108.5	Manhole Barrel Section (D>5') (48" I.D.)	2.5	LF
7	108.5	Sanitary Sewer Shallow Manhole w/ Components (48" I.D.)	1.	EA
8	108.5	Connect to Existing manhole (6" pipe)	1.	EA
9	108.7	Granular Stabilization Material	325.	Ton
10	108.9	Remove and replace asphalt along H Rd at tie in to existing manhole. Hot Bituminous Pavement (patching), 3" thick)(Grading SX binder 64-22) Include Class 6 aggregate base course (6" thick)	20.	SY
11	108.9	Construct concrete cap over San Sewer 10' each side of water line	1.	EA
12	304	Aggregate Base Course (Class 6) (6" thick)	150.	TON
13	620	Portable Sanitary Facility	1.	LS
14	625	Construction Surveying, Including As-built plans.	1.	LS
15	626	Mobilization and Bonding	1.	LS
16	630	Traffic Control (Complete in Place)	1.	LS
17	630	Traffic Control Plan	1.	LS
18	630	Flagging	30.	HR
19	640	Newsletter (approx 12 per Week)	1.	LS
FA		Force Account (minor contract revisions)	---	---

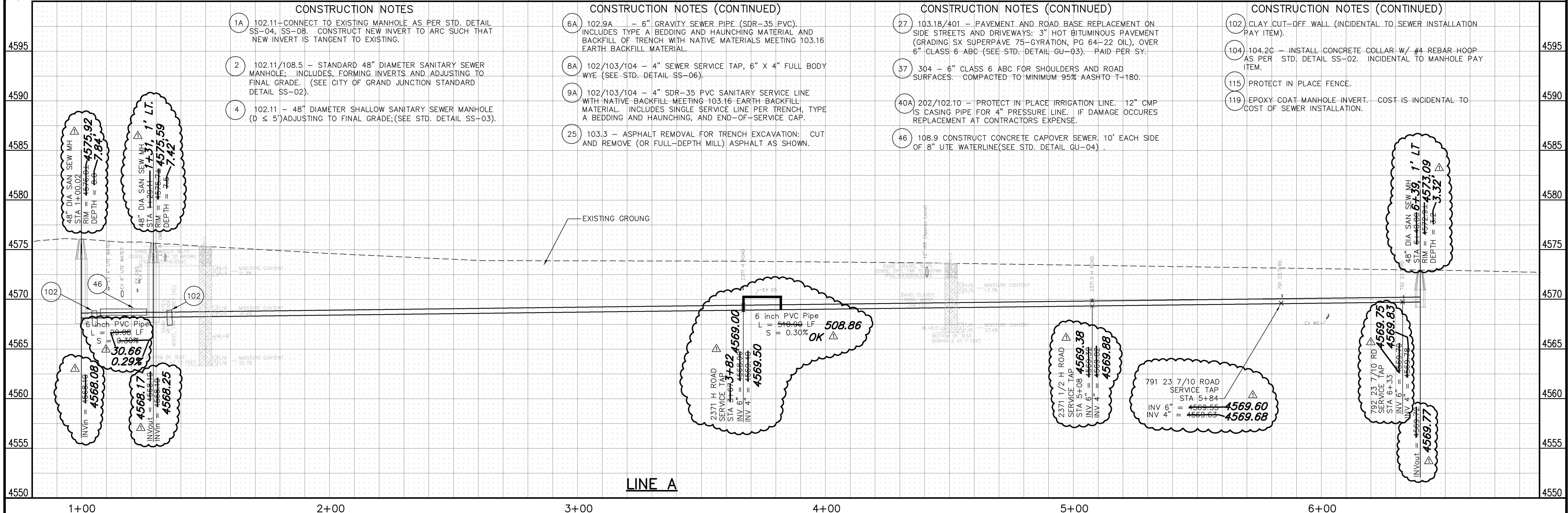
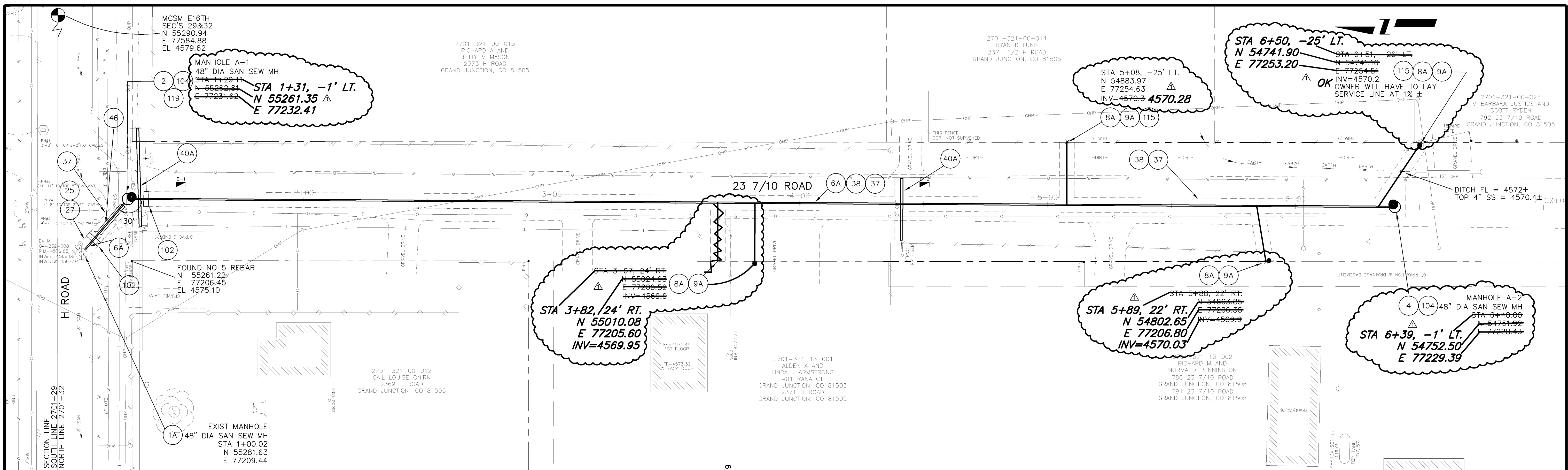
N:\env\proj\906-F48224\906-F48224.dwg 12/05/05 10:52 AM 3/12/06 10:52 AM

REVISION Δ _____	DESCRIPTION _____	DATE _____	DRAWN BY <u>JJV</u> DATE <u>12/05</u>	SCALE _____
REVISION Δ _____	_____	_____	DESIGNED BY <u>JJV</u> DATE <u>12/05</u>	N.T.S.
REVISION Δ _____	_____	_____	CHECKED BY <u>JJV</u> DATE <u>12/05</u>	
REVISION Δ _____	_____	_____	APPROVED BY _____ DATE _____	



**PUBLIC WORKS
AND UTILITIES
ENGINEERING DIVISION**

**PROJECT TITLE
SUMMARY OF APPROXIMATE QUANTITIES**



- | | | | |
|--|---|--|--|
| <p>CONSTRUCTION NOTES</p> <p>1A 102.11—CONNECT TO EXISTING MANHOLE AS PER STD. DETAIL SS-04, SS-08. CONSTRUCT NEW INVERT TO ARC SUCH THAT NEW INVERT IS TANGENT TO EXISTING.</p> <p>2 102.11/108.5 — STANDARD 48" DIAMETER SANITARY SEWER MANHOLE. INCLUDES FORMING INVERTS AND ADJUSTING TO FINAL GRADE. (SEE CITY OF GRAND JUNCTION STANDARD DETAIL SS-02).</p> <p>4 102.11 — 48" DIAMETER SHALLOW SANITARY SEWER MANHOLE (D ≤ 5') ADJUSTING TO FINAL GRADE; (SEE STD. DETAIL SS-03).</p> | <p>CONSTRUCTION NOTES (CONTINUED)</p> <p>6A 102.9A — 6" GRAVITY SEWER PIPE (SDR-35 PVC). INCLUDES TYPE A BEDDING AND HAUNCHING MATERIAL AND BACKFILL OF TRENCH WITH NATIVE MATERIALS MEETING 103.16 EARTH BACKFILL MATERIAL.</p> <p>8A 102/103/104 — 4" SEWER SERVICE TAP, 6" X 4" FULL BODY WYE (SEE STD. DETAIL SS-06).</p> <p>9A 102/103/104 — 4" SDR-35 PVC SANITARY SERVICE LINE WITH NATIVE BACKFILL MEETING 103.16 EARTH BACKFILL MATERIAL. INCLUDES SINGLE SERVICE LINE PER TRENCH, TYPE A BEDDING AND HAUNCHING, AND END-OF-SERVICE CAP.</p> <p>25 103.3 — ASPHALT REMOVAL FOR TRENCH EXCAVATION: CUT AND REMOVE (OR FULL-DEPTH MILL) ASPHALT AS SHOWN.</p> | <p>CONSTRUCTION NOTES (CONTINUED)</p> <p>27 103.18/401 — PAVEMENT AND ROAD BASE REPLACEMENT ON SIDE STREETS AND DRIVEWAYS: 3" HOT BITUMINOUS PAVEMENT (GRADING SX SUPERPAVE 75—GYRATION, PG 64—22 OIL), OVER 6" CLASS 6 ABC (SEE STD. DETAIL GU-03). PAID PER SY.</p> <p>37 304 — 6" CLASS 6 ABC FOR SHOULDERS AND ROAD SURFACES. COMPACTED TO MINIMUM 95% AASHTO T-180.</p> <p>40A 202/102.10 — PROTECT IN PLACE IRRIGATION LINE. 12" CMP IS CASING PIPE FOR 4" PRESSURE LINE. IF DAMAGE OCCURS REPLACEMENT AT CONTRACTORS EXPENSE.</p> <p>46 108.9 CONSTRUCT CONCRETE CAPOVER SEWER. 10' EACH SIDE OF 8" UTE WATERLINE (SEE STD. DETAIL GU-04).</p> | <p>CONSTRUCTION NOTES (CONTINUED)</p> <p>102 CLAY CUT-OFF WALL (INCIDENTAL TO SEWER INSTALLATION PAY ITEM).</p> <p>104 104.2C — INSTALL CONCRETE COLLAR W/ #4 REBAR HOOP AS PER STD. DETAIL SS-02. INCIDENTAL TO MANHOLE PAY ITEM.</p> <p>115 PROTECT IN PLACE FENCE.</p> <p>119 EPOXY COAT MANHOLE INVERT. COST IS INCIDENTAL TO COST OF SEWER INSTALLATION.</p> |
|--|---|--|--|

REVISION Δ AS BUILT PER CONTRACTOR REVISION Δ REVISION Δ REVISION Δ	DESCRIPTION DATE 3-06 DRAWN BY JCS DATE 2005 DESIGNED BY JJV DATE 12-2005 CHECKED BY SBG DATE 12-2005 APPROVED BY JJV DATE 12-2005	SCALES: PLAN PROFILE 		PUBLIC WORKS AND UTILITIES ENGINEERING DIVISION	APPLETON NO. 3 SEWER IMPROVEMENT DISTRICT SANITARY SEWER PLAN AND PROFILES STA 1+00 TO STA 6+40
--	--	------------------------------------	--	--	--