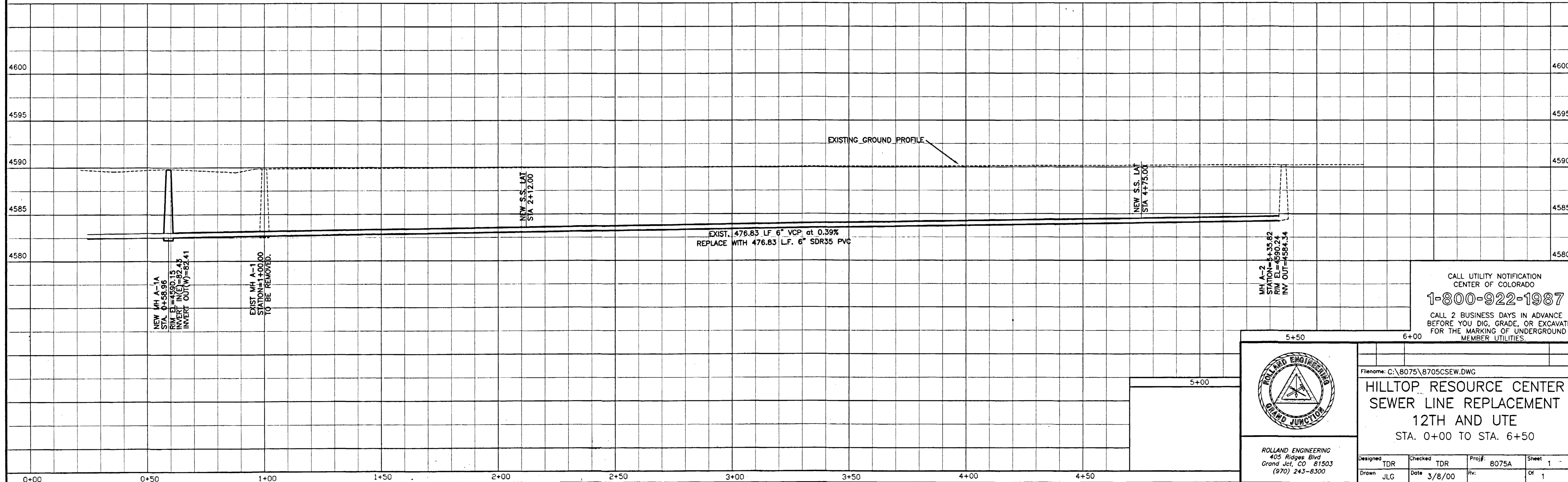
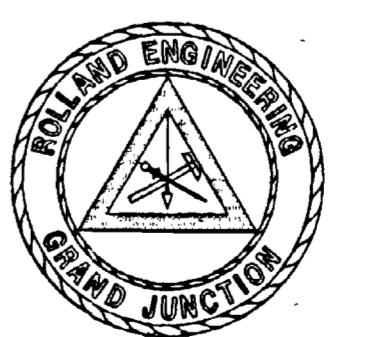


- ① INSTALL SEWER LATERAL AT 1% CAP END OF STUB AND MARK WITH 3" LONG 2X4 PAINTED GREEN BURRIED FLUSH WITH GROUND..
- ② EXISTING SANITARY SEWER SERVICE ACTUAL LOCATION UNKNOWN. LOCATION SHOWN ON PLAN IS BEST GUESS ONLY.
- ③ PATCH EXISTING ASPHALT AFTER INSTALLING STORM SEWER IN ACCORDANCE WITH CITY OF GRAND JUNCTION STANDARDS AND SPECIFICATIONS.
- ④ INSTALL STANDARD 4' DIA. MANHOLE TO GRADES SHOWN IN ACCORDANCE WITH CITY OF GRAND JUNCTION STANDARDS AND SPECIFICATIONS. START LAYING PIPE 3' WEST OF NEW MANHOLE. LAY PIPE THROUGH MANHOLE. POUR MANHOLE INVERT PRIOR TO CUTTING TOP OF PIPE.



CALL UTILITY NOTIFICATION CENTER OF COLORADO  
**1-800-922-1987**  
 CALL 2 BUSINESS DAYS IN ADVANCE BEFORE YOU DIG, GRADE, OR EXCAVATE FOR THE MARKING OF UNDERGROUND MEMBER UTILITIES.

 ROLLAND ENGINEERING 405 Ridges Blvd Grand Jet, CO 81503 (970) 243-8300	File name: C:\8075\8705CSEW.DWG <b>HILLTOP RESOURCE CENTER          SEWER LINE REPLACEMENT          12TH AND UTE          STA. 0+00 TO STA. 6+50</b>	
	Designed TDR Drawn JLG	Checked TDR Date 3/8/00