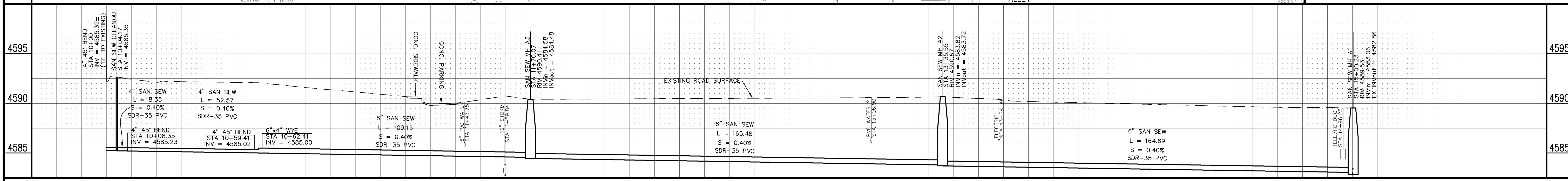
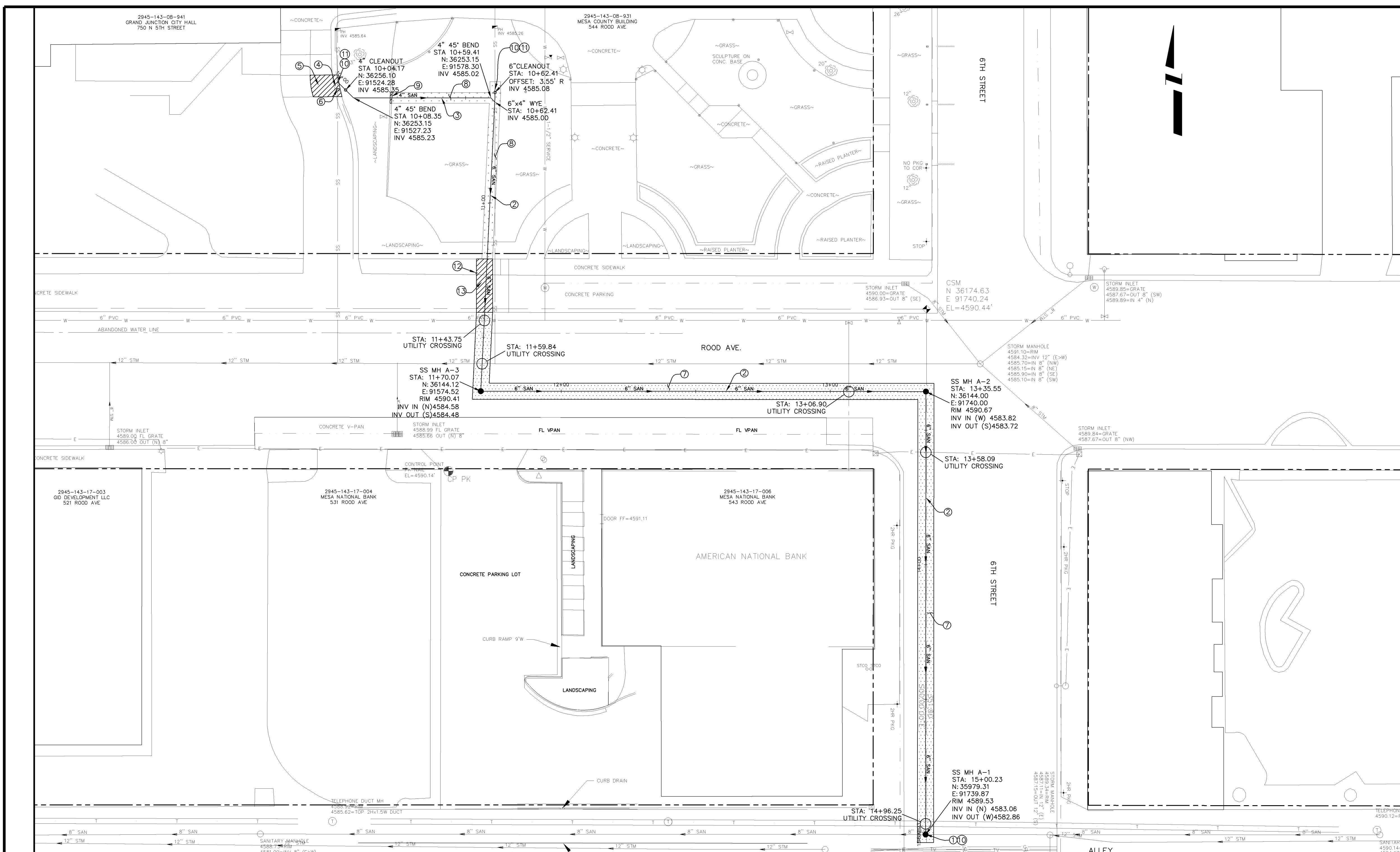


CONSTRUCTION NOTES

- 1 CONNECT TO EXISTING 8" SEWER LINE WITH 48" DIA. MANHOLE.
- 2 6" PVC - SDR 35
- 3 4" PVC - SDR 35
- 4 REMOVE CONCRETE CURB AND GUTTER TO EXISTING JOINT AND REPLACE.
- 5 REMOVE CONCRETE TO EXISTING JOINT AND REPLACE.
- 6 EXISTING 4" SEWER SERVICE TO BE CAPPED AND ABANDONED IN PLACE.
- 7 ASPHALT PATCH - 8" CLASS 6 AGGREGATE BASE COURSE, 4" HOT BITUMINOUS PAVEMENT (2 - 2" LIFTS)
- 8 RESTORE LANDSCAPING, INCLUDING REPLACE SOD, RESET OR REMOVE AND REPLACE PLANTS, RESET LANDSCAPING MULCH AND RESET IRRIGATION SYSTEM.
- 9 SAWCUT AND REMOVE CONCRETE CURB AND REPLACE.
- 10 POTHOLE AND VERIFY THE ELEVATIONS AT ALL CONNECTION POINTS PRIOR TO ANY PIPE INSTALLATION.
- 11 CONNECT TO EXISTING SERVICE LINE WITH A VCP x PVC COUPLING.
- 12 RESET PARKING METER.
- 13 SAWCUT CONCRETE 6' EAST OF EXISTING JOINT. REMOVE CONCRETE TO EXISTING JOINT AND SAWCUT. REPLACE CONCRETE.



	10+00	11+00	12+00	13+00	14+00	15+00

REVISION  $\Delta$  \_\_\_\_\_

REVISION  $\Delta$  \_\_\_\_\_

REVISION  $\Delta$  \_\_\_\_\_

REVISION  $\Delta$  \_\_\_\_\_

DESCRIPTION \_\_\_\_\_

DATE \_\_\_\_\_

DRAWN BY CM DATE 2005

DESIGNED BY CM DATE 2005

CHECKED BY KH DATE 2005

APPROVED BY \_\_\_\_\_ DATE \_\_\_\_\_

SCALES:

PLAN HORIZONTAL 1" = 20'

PROFILE HORIZONTAL 1" = 20'

VERTICAL 1" = 5'

**CITY OF**  
**Grand Junction**  
COLORADO

**PUBLIC WORKS**  
**AND UTILITIES**  
**ENGINEERING DIVISION**

**MESA COUNTY BUILDING**  
**SEWER SERVICE REPLACEMENT**

1