

2006 WATERLINE REPLACEMENTS

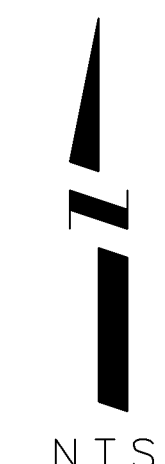
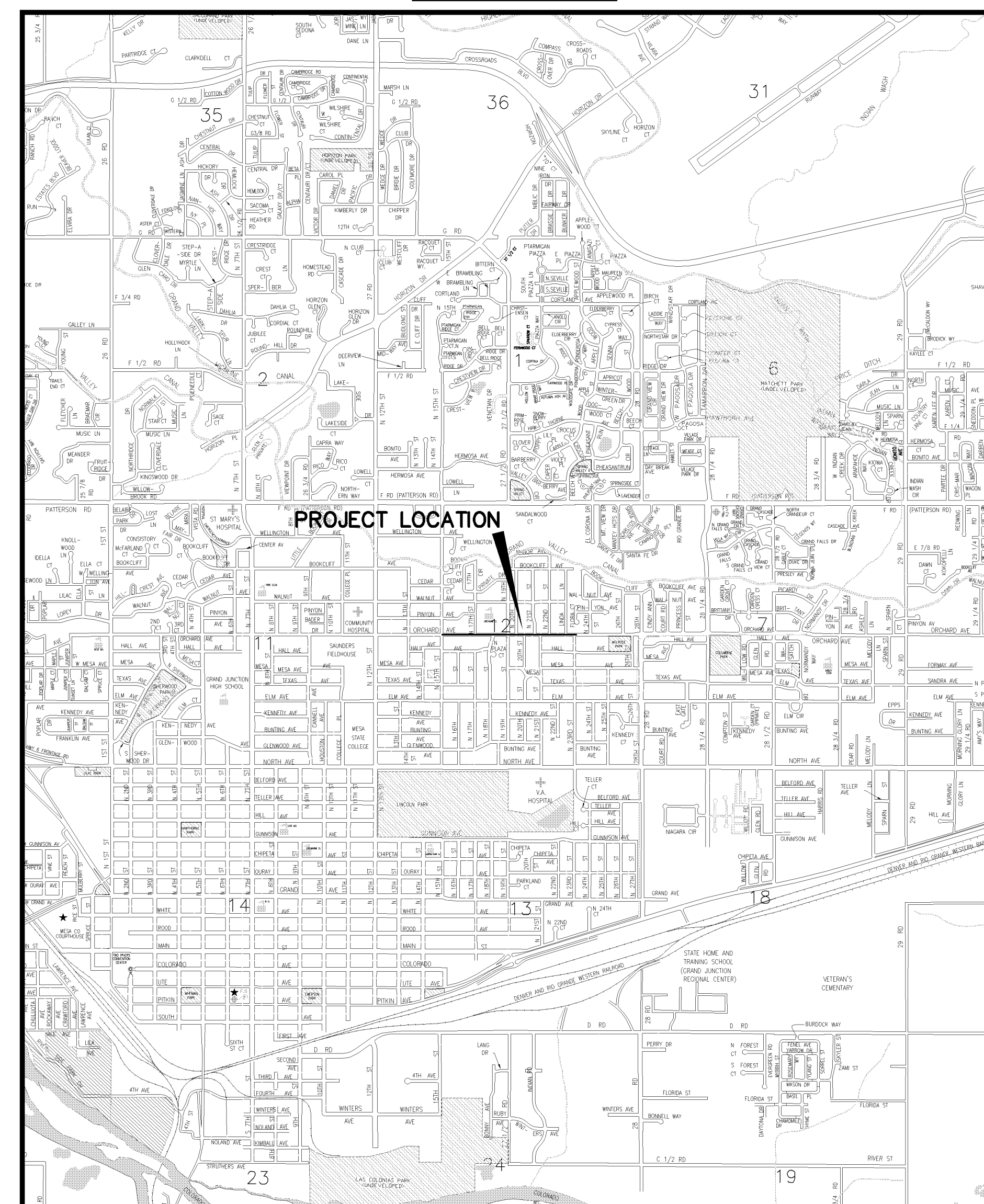
ORCHARD AVENUE FROM N. 15th ST TO N. 23rd ST

APRIL 2006

FILED UNDER
05099300.TIF

AS BUILT SEPTEMBER 2006

VICINITY MAP



- 1 ————— Cover Sheet
- 2 ————— Standard Abbreviations, Legend, and Symbols
- 3 ————— Summary of Approximate Quantities
- 4 ————— Project Control Map
- 5-7 ————— Waterline Plans
- 8-9 ————— Sanitary Sewer Plan And Profiles

SEWER PLAN AND
PROFILES FILED
UNDER 02110800.TIF

UTILITIES AND AGENCIES								
AGENCY	NAME	POSITION	ROLE	MAILING ADDRESS	STREET ADDRESS	CITY, STATE	VOICE-WK	FAX
GRAND JUNCTION, CITY OF	MIKE CURTIS	PROJECT ENGINEER	PROJECT ENGINEER	250 N. 5th STREET	250 N. 5th STREET	GRAND JCT., CO 81501	(970) 256-4004	(970) 256-4022
GRAND JUNCTION, CITY OF	BRET GUILLORY	UTILITY ENGINEER	SANITARY SEWER	250 N. 5th STREET	250 N. 5th STREET	GRAND JCT., CO 81501	(970) 244-1590	(970) 256-4022
GRAND VALLEY IRRIGATION CO.	PHIL BERTRAND		IRRIGATION	688 26 ROAD	688 26 ROAD	GRAND JCT., CO 81506	(970) 242-2762	
BRESNAN	SCOTT WRIGHT		CABLE TV	2502 FORESIGHT CIRCLE	2502 FORESIGHT CIRCLE	GRAND JCT., CO 81504	(970) 986-1211	(970) 245-6803
U.S. WEST/QWEST	CHRIS JOHNSON	ENGINEER	TELEPHONE	2524 BLICHMANN AVE	2524 BLICHMANN AVE	GRAND JCT., CO 81504	(970) 244-4311	(970) 240-4349
UTE WATER	DARYL MOORE	ENGINEER	WATER	PO BOX 460		GRAND JCT., CO 81502	(970) 242-7491	(970) 242-9189
XCEL	STEVE LOPEZ	PROJECT MANAGER	GAS, ELECTRIC	2538 BLICHMANN AVE	2538 BLICHMANN AVE	GRAND JCT., CO 81504	(970) 244-2698	(970) 244-2661
GRAND JUNCTION DRAINAGE DISTRICT	JOHN BALLAGH	PROJECT MANAGER	STORM DRAIN	PO BOX 55246	722 23 ROAD	GRAND JCT., CO 81505	(970) 242-4343	(970) 242-4348



Public Works & Utilities
Engineering Division

NOTE: NOTIFY AFFECTED UTILITY VENDOR 48 HOURS PRIOR TO EXCAVATIONS THAT WILL EXPOSE UTILITY LINES. THE COVER SHEET WILL HAVE A LISTING OF UTILITY VENDORS AND TELEPHONE NUMBERS.

REVISION Δ ADDENDUM 1 - ADD EXISTING WATER & GAS UTILITY LOCATIONS TO SHEET 9 - 4-25-06
 REVISION Δ AS BUILT - 9-2006
 REVISION Δ -

DRAWING STATUS:	
ASBUILT	
DESIGNED BY:	DATE
PAUL JAGIM, PROJECT ENGINEER	4/12/06
REVIEWED BY:	DATE
BRET GUILLORY, UTILITY ENGINEER	4/12/06
AUTHORIZED FOR CONSTRUCTION	
TRENTON C. PRALL, CITY ENGINEER	DATE
ACCEPTED AS CONSTRUCTED	
MIKE CURTIS, PROJECT ENGINEER	DATE

02110801.TIF

ABBREVIATIONS

AASTHO	AMERICAN ASSOCIATION OF STATE HIGHWAY & TRANSPORTATION OFFICIALS
ABC	AGGREGATE BASE COURSE
AC	ASBESTOS CEMENT
AP	ANGLE POINT
ASB	ANCHORED STRAW BALES
ASP	ALUMINIZED STEEL PIPE
ASTM	AMERICAN SOCIETY FOR TESTING MATERIALS
AWWA	AMERICAN WATER WORKS ASSOCIATION
BC	BACK OF CURB
BF	BUTTERFLY VALVE
BOW	BACK OF WALK
BCR	BEGIN CURB RETURN
BOT	BOTTOM
BSWMP	BETTER STORM WATER MANAGEMENT PRACTICES
CH	CHORD
CAP	CORRUGATED ALUMINUM PIPE
CDOT	COLORADO DEPARTMENT OF TRANSPORTATION
CI	CAST IRON
C,G,& SW	CURB, GUTTER & SIDEWALK
CL	CENTER LINE
CL	CLEAR
CMP	CORRUGATED METAL PIPE
CO	CLEAN OUT
COMB	COMBINATION (AS IN STORM SEWER AND SANITARY SEWER)
CONC	CONCRETE
CSM	CITY SURVEY MONUMENT
CSP	CORRUGATED STEEL PIPE
CJ	COPPER
DI	DUCTILE IRON
DWY	DRIVEWAY
E	ELECTRIC
ECR	END CURB RETURN
EG	EDGE OF GUTTER
EL	ELEVATION
EP	EDGE OF PAVEMENT
EX	EXISTING
FB	FULL BODY
FC	FACE OF CURB
FG	FINISHED GRADE
FL	FLOW LINE
FL	FLANGE
FM	FORCE MAIN
FO	FIBER OPTICS
FS	FAR SIDE
FTG	FOOTING
G	GAS
GB	GRADE BREAK
GM	GAS METER
GV	GATE VALVE
HBP	HOT BITUMINOUS PAVEMENT
HDPE	HIGH DENSITY POLYETHYLENE
INV	INVERT
IRR	IRRIGATION
L	LENGTH OF ARC
LC	LONG CHORD
LF	LINEAR FEET
LL	LONG ARC
LS	SHORT ARC
LT	LEFT
MB	MAILBOX
MCSM	MESA COUNTY SURVEY MONUMENT
MH	MANHOLE
MJ	MECHANICAL JOINT
MW	MILL WRAP
N/A	NOT APPLICABLE
NIC	NOT IN CONTRACT
NOP	NO ONE PERSON
NRCP	NON-REINFORCED CONCRETE PIPE
NS	NEAR SIDE
NTS	NOT TO SCALE
OHP	OVERHEAD POWER
OHT	OVERHEAD TELEPHONE
PC	POINT OF CURVATURE
PCC	POINT OF COMPOUND CURVATURE
PE	POLYETHYLENE
PERF	PERFORATED
PI	POINT OF INTERSECTION
PIP	PLASTIC IRRIGATION PIPE
POC	POINT ON CURVE
POT	POINT ON TANGENT
PR	PROPOSED
PRC	POINT OF REVERSE CURVATURE
PT	POINT OF TANGENCY
PVC	POLYVINYL CHLORIDE
R	RADIUS
RCP	REINFORCED CONCRETE PIPE
REQ'D	REQUIRED
RG	RESTRAINED GLANDS
RL	LONG RADIUS
ROW	RIGHT OF WAY
RP	RADIUS POINT
RR	RAIL ROAD
RS	SHORT RADIUS
RT	RIGHT
S	SLOPE
SAN	SANITARY
SC	SHORT CHORD
SCD	STANDARD CONTRACT DOCUMENTS
SCH	SCHEDULE
SF	SILT FENCE
SL	SECTION LINE
SSRB	STANDARD SPECIFICATIONS FOR ROAD & BRIDGE CONSTRUCTION
SSUU	STANDARD SPECIFICATIONS FOR CONSTRUCTION OF UNDERGROUND UTILITIES
STA	STATION
STL	STEEL
STM	STORM
T	TELEPHONE
TAN	LENGTH OF TANGENT
TC	TOP OF CURB
TH	TEST HOLE
TV	TELEVISION
(TYP)	TYPICAL
UU	UNDERGROUND UTILITIES
VC	VERTICAL CURVE
VCP	VITRIFIED CLAY PIPE
VPC	VERTICAL POINT OF CURVATURE
VPCC	VERTICAL POINT OF COMPOUND CURVATURE
VPRC	VERTICAL POINT OF REVERSE CURVATURE
VPI	VERTICAL POINT OF INTERSECTION
VPT	VERTICAL POINT OF TANGENCY
W	WATER
Δ	DELTA ANGLE

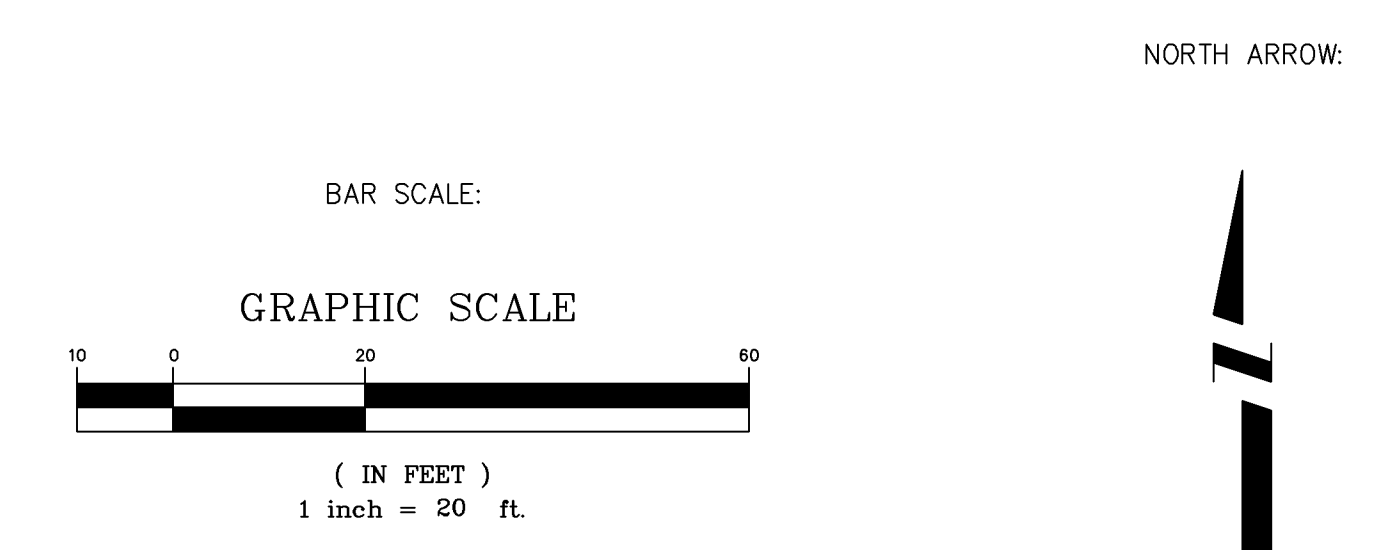
LEGEND

BSWMP DRAINAGE BASIN BOUNDARY	
BSWMP ANCHORED STRAW BALES	
BSWMP SILT FENCE	
BUILDING	
CONCRETE CURB AND GUTTER	
CONCRETE CURB, GUTTER, & SIDEWALK	
CONCRETE DITCH	
CONCRETE SIDEWALK	
CULVERT	
EARTH DITCH	
EDGE OF GRAVEL	
EDGE OF PAVEMENT	
FENCE (BARBED WIRE)	
FENCE (CHAIN LINK)	
FENCE (IRON)	
FENCE (PLASTIC)	
FENCE (WOOD)	
FENCE (WOVEN WIRE)	
GUARD RAIL	
HATCHING: INDICATES ASPHALT REMOVAL	
HATCHING: INDICATES CONCRETE REMOVAL	
HATCHING: INDICATES STAGING AREA	
LINE (CENTER OF IMPROVEMENTS)	
LINE (CITY LIMITS)	
LINE (CONTROL)	
LINE (EASEMENT)	
LINE (MONUMENT/SECTION)	
LINE (PROPERTY)	
LINE (RIGHT OF WAY)	
MATCH LINE	
PIPE (IRRIGATION)	
PIPE (SIPHON)	

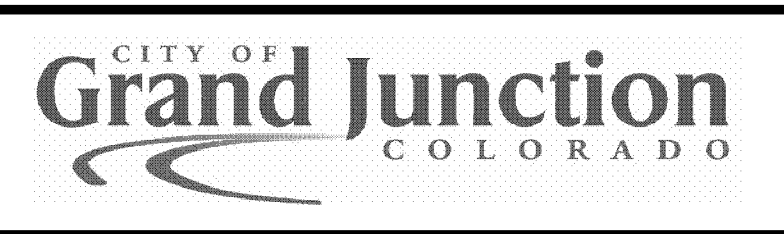
PROPOSED CONCRETE CURB AND GUTTER	
PROPOSED CONCRETE CURB, GUTTER, & SIDEWALK	
PROPOSED CONCRETE SIDEWALK	
PROPOSED "WET" UTILITIES (CONSTRUCTION NOTE WILL INDICATE TYPE, SIZE, AND MATERIAL OF NEW MAIN)	
ALL PROPOSED FEATURES NOT SHOWN IN LEGEND WILL BE SHOWN THE SAME AS THEIR EXISTING COUNTERPART, BUT INDICATED BY BOLDER LINETYPE	
RAIL ROAD	
RETAINING WALL	
STRIPING (CONTINUOUS WHITE)	
STRIPING (DASHED WHITE)	
STRIPING (CONTINUOUS YELLOW)	
STRIPING (DASHED YELLOW)	
TOP OF SLOPE	
CONTOUR LINES (SHOWN BETWEEN TOP & TOE)	
TOE OF SLOPE	
TRAFFIC DETECTOR LOOP	
UTILITY LINE (ABANDON) (THIS CASE A WATER LINE)	
UTILITY LINE (CABLE TV)	
UTILITY LINE (ELECTRIC)	
UTILITY LINE (FIBER OPTIC)	
UTILITY LINE (GAS)	
UTILITY LINE (HIGH VOLTAGE OVERHEAD POWER)	
UTILITY LINE (OVERHEAD POWER)	
UTILITY LINE (OVERHEAD TELEPHONE)	
UTILITY LINE (SANITARY SEWER)	
UTILITY LINE (SANITARY SEWER FORCE MAIN)	
UTILITY LINE (SANITARY SEWER SERVICE)	
UTILITY LINE (STORM SEWER)	
UTILITY LINE (STORM SEWER, PERFORATED)	
UTILITY LINE (STORM/SANITARY SEWER SEWER COMBINATION)	
UTILITY LINE (TELEPHONE)	
UTILITY LINE (WATER)	

SYMBOLS

BENCH MARK	
CATCH BASIN	
CLEAN OUT	
CURB STOP	
FIRE HYDRANT	
GUY WIRE ANCHOR	
HEADGATE	
IRRIGATION PUMP	
MAILBOX	
MANHOLE (ELECTRIC)	
MANHOLE (GAS)	
MANHOLE (SANITARY/STORM)	
MANHOLE (TELEPHONE)	
MANHOLE (TV)	
MANHOLE (WATER)	
METER (GAS)	
METER (WATER)	
PEDESTAL (TELEPHONE)	
PEDESTAL (TV)	
PROPERTY PIN	
PULL BOX	
REDUCER FITTING	
SIGN OR POST (SIGN TYPE NOTED)	
SPRINKLER HEAD	
STREET LIGHT	
SURVEY MONUMENT (CITY)	
SURVEY MONUMENT (TYPE NOTED)	
TEST HOLE	
TRAFFIC PAINT MARKING	
TRAFFIC SIGNAL POLE AND MAST ARM	
UTILITY POLE	
VALVE (GAS)	
VALVE (IRRIGATION)	
VALVE (WATER)	
VEGETATION (HEDGE OR BUSH)	
VEGETATION (TREE STUMP)	
VEGETATION (TREE) (CALIPER SIZE NOTED)	
WATER HYDRANT	
WEIR	
YARD LIGHT	



REVISION Δ	DESCRIPTION	DATE	DRAWN BY JCS	DATE 4-02	SCALE
REVISION Δ			DESIGNED BY	DATE	PLAN PROFILE
REVISION Δ			CHECKED BY	DATE	HORIZ. 1"=20' HORIZ.
REVISION Δ			APPROVED BY	DATE	VERT.

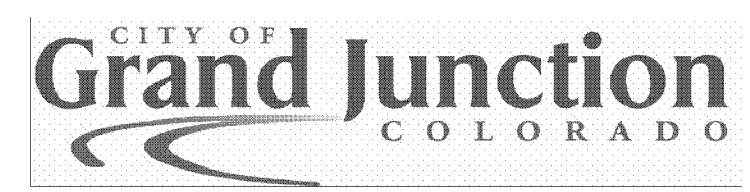


PUBLIC WORKS AND UTILITIES ENGINEERING DIVISION

CITY OF GRAND JUNCTION STANDARD ABBREVIATIONS, LEGEND, AND SYMBOLS SHEET 02110802.TIF

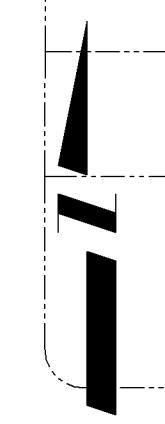
2006 Waterline Replacements: Orchard Avenue from 15th to 23rd									
Summary of Approximate Quantities									
CDOT/City Ref. #	Description	Units	Sheet 5	Sheet 6	Sheet 7	Sheet 8	Sheet 9	General & Contingency	Total Quantity
1	108.2	Imported Trench Backfill (including haul and disposal of unsuitable excavated material).	TON					300	300
2	108.2	4" Water Pipe (C-900 PVC).	LF		40			5	45
3	108.2	6" Water Pipe (C-900 PVC).	LF	137	335	173		15	660
4	108.2	12" Water Pipe (C-900 PVC).	LF	1069	1003	806		22	2900
5	108.2	18" Water Pipe (C-905 PVC).	LF			63		7	70
6	108.2	6" Water Main Lowering at Utility Crossing.	EA		3	1			4
7	108.2	12" Water Main Lowering at Utility Crossing.	EA	1					1
8	108.2	8" Gravity Sewer Pipe (SDR 26 PVC)(with Mechanical Joint Restraints).	LF				343	2	345
9	108.2	8" Gravity Sewer Pipe (SDR 35 PVC).	LF				88	368	460
10	108.3	4" Gate Valve.	EA		2				2
11	108.3	6" Gate Valve.	EA	4	10	5			19
12	108.3	12" Gate Valve.	EA	5	2	3			10
13	108.3	18" Butterfly Valve.	EA			1			1
14	108.3	6" x 6" Tee.	EA		1				1
15	108.3	12" x 4" Tee.	EA		1				1
16	108.3	12" x 6" Tee.	EA	4	7	4			15
17	108.3	12" x 12" Tee.	EA	2					2
18	108.3	18" x 18" Tee.	EA			1			1
19	108.3	4", 45° Elbow.	EA		1				1
20	108.3	6", 22 1/2° Elbow.	EA		1				1
21	108.3	6", 45° Elbow.	EA	3	7	4			14
22	108.3	12", 45° Elbow.	EA	7	2	2			11
23	108.3	12", 90° Elbow.	EA	1					1
24	108.3	6" x 4" Reducer.	EA		1				1
25	108.3	12" x 6" Reducer.	EA	2					2
26	108.3	18" x 12" Reducer.	EA			2			2
27	108.3	6" End Cap/Plug.	EA					4	4
28	108.3	12" End Cap/Plug.	EA					2	2
29	108.3	Fire Hydrant.	EA	3	2	1			6
30	108.3	8" x 4" Inserta-Tee Sewer Service Connection (Service Connection on Restrained Joint Pipe).	EA				3		3
31	108.3	8" x 4" Sewer Service Connection.	EA					7	7
32	108.4	3/4" Water Service Line (Type K Copper).	LF	140	74	124		17	355
33	108.4	1" Water Service Line (Type K Copper).	LF	36	56			8	100
34	108.4	12" x 3/4" Tapping Saddle.	EA	18	14	14			46
35	108.4	12" x 1" Tapping Saddle.	EA	5	3				8
36	108.4	3/4" Corporation Stop.	EA	18	14	14			46
37	108.4	1" Corporation Stop.	EA	5	3				8
38	108.5	Connect to Existing Manhole (8" pipe).	EA				1		1
39	108.5	Sanitary Sewer Basic Manhole Components (48" I.D.).	EA				4	1	5
40	108.5	Manhole Barrel (D > 5') (48" I.D.).	LF				13	2	14
41	108.7	Granular Stabilization Material (Type B).	TON					200	200
42	108.9/304	Aggregate Base Course (Class 6)(6" thick).	SY	850	943	700	348	247	3350
43	108.9/401	Hot Bituminous Pavement (Patching)(6" thick)(Grading SX, Binder Grade PG 64-22).	SY	850	943	700	348	247	3350
44	202	Removal of Asphalt Pavement.	SY	850	943	700	348	247	3350
45	202	Removal of Concrete Pavement.	SY	10	14	7	24	4	62
46	202	Concrete Plug on End of Abandoned Pipe.	EA	1		4		2	7
47	202	Remove Fire Hydrant and Return to City.	EA	1	2				3
48	202	Remove Valve.	EA		5	2			7
49	202	Abandon Valve.	EA	6	6	4			16
50	202	Remove Manhole.	EA				4	1	5
51	209	Dust Abatement.	DAY					25	25
52	210	Reset Landscape Appurtenance (Ground Cover & Border).	SY	3				2	5
53	210	Reset Sprinkler System (per property).	EA	3				1	4
54	210	Reset Sign.	EA	1					1
55	210	Reset Meter Pit.	EA	1					1
56	212/207	Sod (including 6" topsoil).	SY	14	2	2	1		20
57	601	Concrete Barrier (3' High, Match Existing)(includes removal of existing barrier).	Lump Sum		1				1
58	608	Concrete Curb and Gutter (2' wide).	LF	18				2	20
59	608	Monolithic Drive Over Curb, Gutter and Sidewalk (5' to 6' wide).	SY	4	3	3	3	1	15
60	608	Concrete Driveway Section (8" thick).	SY				15		15
61	608	Concrete Sidewalk (4" thick).	SY	3				2	5
62	608	Concrete Drainage Pan (3' to 6' wide).	SY		11	4	5	4	25
63	620	Portable Sanitary Facility.	EA					1	1
64	625	Construction Surveying.	Lump Sum					1	1
65	626	Mobilization.	Lump Sum					1	1
66	629	Survey Monument (Complete in Place)(Type: Section Corner).	EA					1	1
67	630	Traffic Control (Complete in Place).	Lump Sum					1	1
68	630	Traffic Control Plan.	Lump Sum					1	1
69	630	Flagging.	Hour					250	250
70	GCC56	Newsletter (Approximately 300 per distribution. Distributed Weekly).	Lump Sum					1	1
71	FA	Force Account.							

REVISION Δ _____	DESCRIPTION _____	DATE _____	DRAWN BY _____	DATE _____	SCALE _____
REVISION Δ _____	DESIGNED BY _____	DATE _____	CHECKED BY _____	DATE _____	N.T.S.
REVISION Δ _____	APPROVED BY _____	DATE _____			



PUBLIC WORKS AND UTILITIES ENGINEERING DIVISION

2006 WATERLINE REPLACEMENTS SUMMARY OF APPROXIMATE QUANTITIES
0210803.TIF



STA 14+00
 ↖ N 42093.57
 E 96024.64
 EL 4641.93
 DESC. CSM AT 15th AND ORCHARD

STA 7+60.30
 ↖ N 42091.20
 E 96684.94
 EL 4643.97
 DESC. CSM AT 17th AND ORCHARD

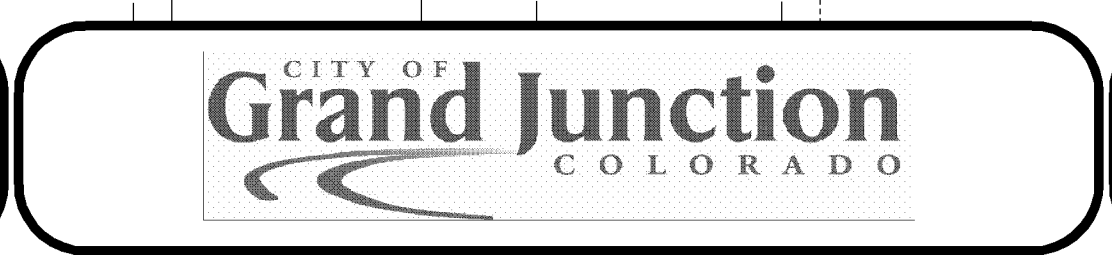
STA 14+20.87
 ↖ N 42088.55
 E 97345.50
 EL 4639.37
 DESC. CSM AT 19th AND ORCHARD

STA 20+65.49
 ↖ N 42089.21
 E 97990.12
 EL 4634.87
 DESC. CSM @ 21st AND ORCHARD AVE

STA 27+40.74
 ↖ N 42089.65
 E 98665.37
 EL 4630.41
 DESC. CSM AT 23rd STREET AND ORCHARD AVE

REVISION	DESCRIPTION	DATE	DRAWN BY	DATE
REVISION			DESIGNED BY	DATE
REVISION			CHECKED BY	DATE
REVISION			APPROVED BY	DATE

SCALE
 N.T.S.

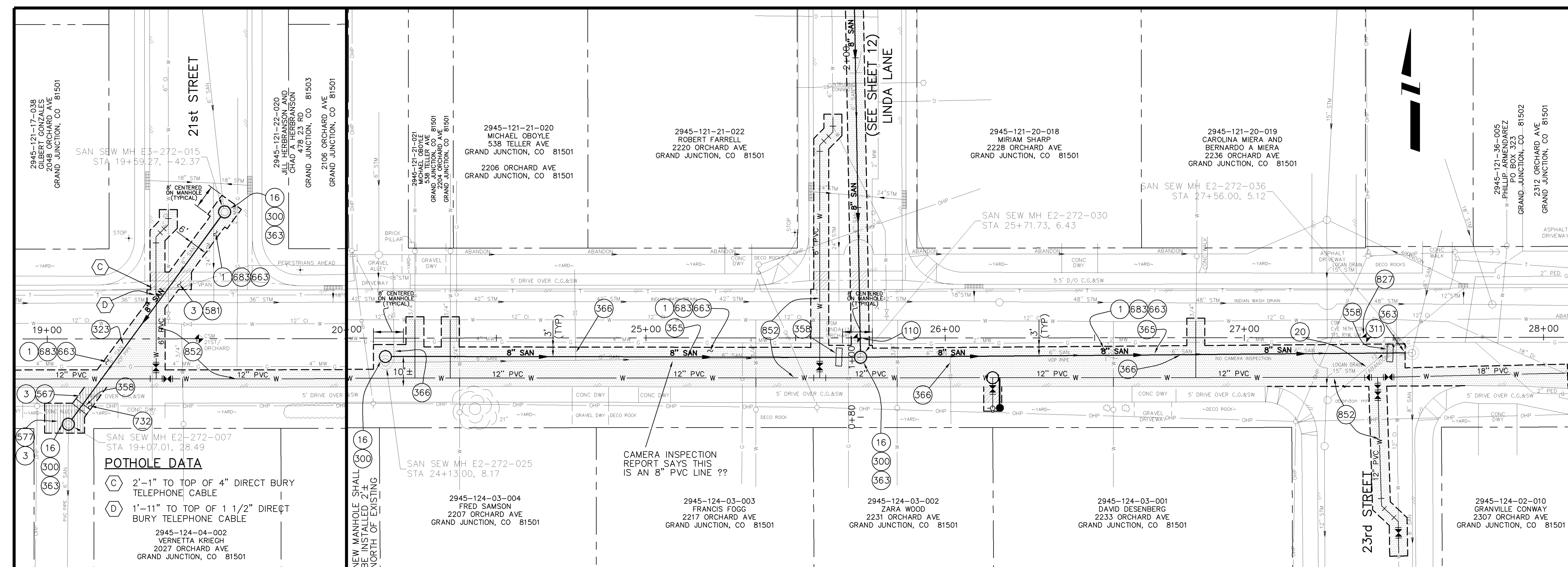


PUBLIC WORKS
 AND UTILITIES
 ENGINEERING DIVISION

2006 WATERLINE REPLACEMENTS
 PROJECT CONTROL MAP
 02110804.TIF

CONSTRUCTION NOTES

- 1 202 - REMOVAL OF ASPHALT MAT. CUT AND REMOVE ASPHALT AS SHOWN. (INDICATED BY DOT HATCH PATTERN)
- 3 202 - REMOVAL OF CONCRETE. SAW CUT AND REMOVE CONCRETE AS SHOWN. (INDICATED BY CROSS HATCH PATTERN) INCLUDES BUT NOT LIMITED TO CURB, GUTTER, SIDEWALK, DRIVEWAY, SLABS, V-PAN, CURB RAMPS, INTERSECTION CORNERS, APRONS, AND LANDSCAPE BORDERS.
- 16 202 - REMOVAL OF MANHOLE. CONTRACTOR SHALL SALVAGE RING AND COVER AND DELIVER TO CITY SHOPS.
- 20 202 - ABANDON PIPE. ABANDON BY PLUGGING REMAINING ENDS WITH CONCRETE.
- 110 629 - REFERENCE AND RESET SURVEY MONUMENT.
- 300 102.11/108.5 - SANITARY SEWER BASIC MANHOLE (48" I.D.). INCLUDES CONNECTION OF ADJACENT SEWER LINE, FORMING INVERTS AND ADJUSTING TO FINAL GRADE. (SEE CITY OF GRAND JUNCTION STANDARD DETAIL SS-02).
- 311 102.11/108.5 - CONNECT TO EXISTING MANHOLE (8" PIPE). (SEE CITY OF GRAND JUNCTION STANDARD DETAIL SS-08).
- 323 102.9/108.2 - 8" GRAVITY SEWER PIPE (SDR 35 PVC). INCLUDES TYPE A BEDDING AND HAUNCHING MATERIAL AND BACKFILL OF TRENCH WITH NATIVE MATERIALS MEETING 103.16 EARTH BACKFILL MATERIAL.
- 358 103 - CLAY CUT-OFF WALL (INCIDENTAL TO SEWER INSTALLATION PAY ITEM)
- 363 BYPASS PUMPING WILL BE REQUIRED FOR CONSTRUCTION.
- 365 102.9/108.2 - 8" GRAVITY SEWER PIPE (SDR 26 PVC) (WITH JOINT RESTRAINTS). INCLUDES TYPE A BEDDING AND HAUNCHING MATERIAL AND BACKFILL OF TRENCH WITH NATIVE MATERIALS MEETING 103.16 EARTH BACKFILL MATERIAL.
- 366 102.9/108.3 - CONTRACTOR SHALL FIELD VERIFY EXISTING SEWER SERVICE LOCATION AND INSTALL NEW "INSERTA-TEE" SEWER SERVICE TAP (SERVICE CONNECTION FOR RESTRAINED JOINT PIPE) AND SDR-35 PVC PIPE, INCLUDING ALL BENDS AND FITTINGS TO EDGE OF TRENCH AND CONNECT TO EXISTING SERVICE. (SEE CITY STD. DETAIL SS-06)
- 567 608.06 - MONOLITHIC DRIVE OVER CURB, GUTTER AND SIDEWALK (5' WIDE)
- 577 608.06 - CONCRETE DRIVEWAY SECTION (8" THICK) (COMMERCIAL)
- 581 608.06 - CONCRETE DRAINAGE PAN (6 FT. WIDE)
- 663 304 - AGGREGATE BASE COURSE (CLASS 6) (6" THICK)
- 683 401.08 - HOT BITUMINOUS PAVEMENT (PATCHING) (6" THICK) (GRADING SX, BINDER GRADE PG 64-22) (THREE 2" LIFTS)
- 732 207/212 - SOD. INCLUDES 6" OF STOCKPILED EXISTING TOPSOIL (IF APPROVED BY INSPECTOR/ENGINEER) OR 6" IMPORTED TOPSOIL.
- 827 PROTECT SURVEY MONUMENT
- 852 SEE WATERLINE PLAN

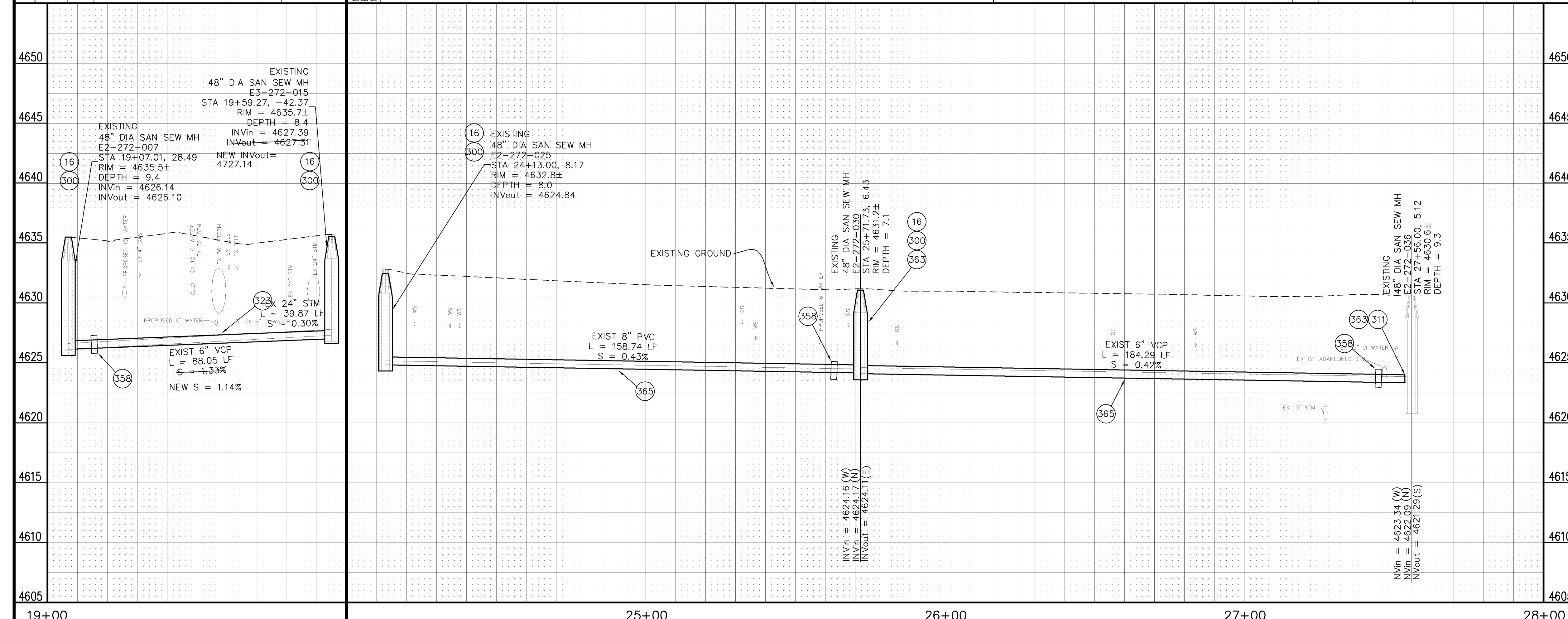


POTHOLE DATA

C	2'-1" TO TOP OF 4" DIRECT BURY TELEPHONE CABLE
D	1'-11" TO TOP OF 1 1/2" DIRECT BURY TELEPHONE CABLE

2945-124-04-002
VERNETTA KRIEGL
2027 ORCHARD AVE
GRAND JUNCTION, CO 81501

CAMERA INSPECTION REPORT SAYS THIS IS AN 8" PVC LINE ??



REVISION Δ DESCRIPTION DATE	DRAWN BY JCS DATE 2006	SCALES: PLAN HORIZONTAL 1"=10' PROFILE VERTICAL 1"=5'
REVISION Δ AS BUILT 9-2006	DESIGNED BY DATE	
REVISION Δ	CHECKED BY DATE	
REVISION Δ	APPROVED BY DATE	



PUBLIC WORKS AND UTILITIES ENGINEERING DIVISION

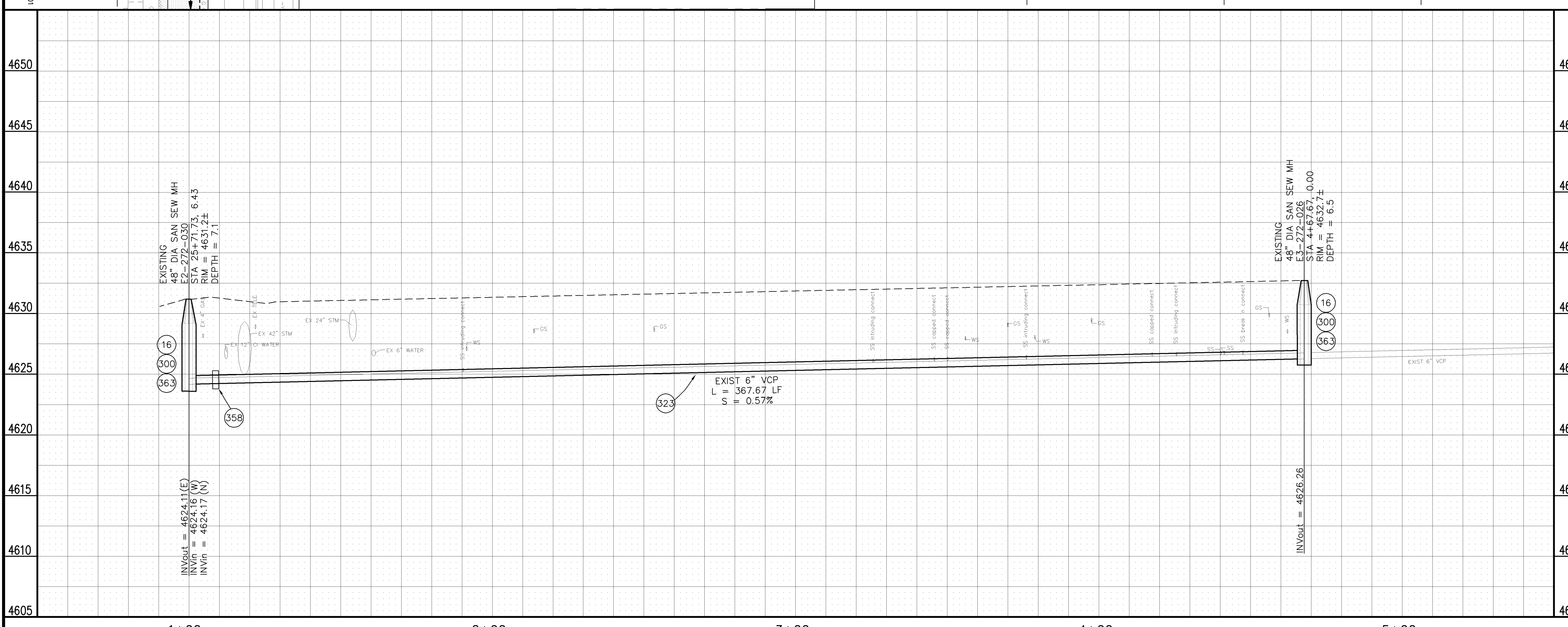
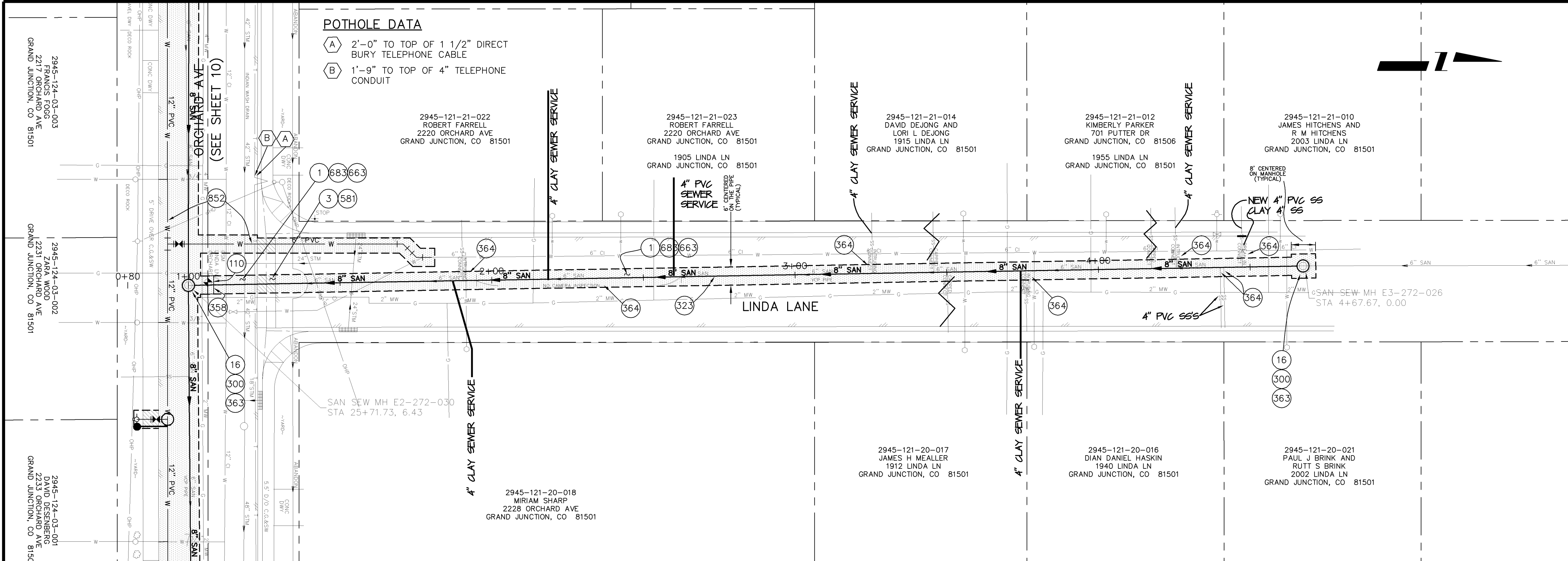
2006 WATERLINE REPLACEMENTS
SANITARY SEWER PLAN AND PROFILE 02/10/05.TIF
(19+00 TO 20+00) AND (24+00 TO 28+00)
SEWER CROSSING AT 21ST AND FROM 22nd TO 23rd

CONSTRUCTION NOTES

- 1 202 - REMOVAL OF ASPHALT MAT. CUT AND REMOVE ASPHALT AS SHOWN. (INDICATED BY DOT HATCH PATTERN)
- 3 202 - REMOVAL OF CONCRETE. SAW CUT AND REMOVE CONCRETE AS SHOWN. (INDICATED BY CROSS HATCH PATTERN) INCLUDES BUT NOT LIMITED TO CURB, GUTTER, SIDEWALK, DRIVEWAY SLABS, V-PAN, CURB RAMPS, INTERSECTION CORNERS, APRONS, AND LANDSCAPE BORDERS.
- 16 202 - REMOVAL OF MANHOLE. CONTRACTOR SHALL SALVAGE RING AND COVER AND DELIVER TO CITY SHOPS.
- 110 629 - REFERENCE AND RESET SURVEY MONUMENT.
- 300 102.11/108.5 - SANITARY SEWER BASIC MANHOLE (48" I.D.). INCLUDES CONNECTION OF ADJACENT SEWER LINE, FORMING INVERTS AND ADJUSTING TO FINAL GRADE. (SEE CITY OF GRAND JUNCTION STANDARD DETAIL SS-02).
- 323 102.9/108.2 - 8" GRAVITY SEWER PIPE (SDR 35 PVC). INCLUDES TYPE A BEDDING AND HAUNCHING MATERIAL AND BACKFILL OF TRENCH WITH NATIVE MATERIALS MEETING 103.16 EARTH BACKFILL MATERIAL.
- 358 103 - CLAY CUT-OFF WALL (INCIDENTAL TO SEWER INSTALLATION PAY ITEM)
- 363 BYPASS PUMPING WILL BE REQUIRED FOR CONSTRUCTION.
- 364 102.9/108.3 - CONTRACTOR SHALL FIELD VERIFY EXISTING SEWER SERVICE LOCATION AND INSTALL NEW SEWER SERVICE TAP AND SDR-35 PVC PIPE, INCLUDING ALL BENDS AND FITTINGS TO EDGE OF TRENCH AND CONNECT TO EXISTING SERVICE. (SEE CITY STD. DETAIL SS-06)
- 581 608.06 - CONCRETE DRAINAGE PAN (6 FT. WIDE)
- 663 304 - AGGREGATE BASE COURSE (CLASS 6) (6" THICK)
- 683 401.08 - HOT BITUMINOUS PAVEMENT (PATCHING) (6" THICK) (GRADING SX, BINDER GRADE PG 64-22) (THREE 2" LIFTS)
- 852 SEE WATERLINE PLAN

POTHOLE DATA

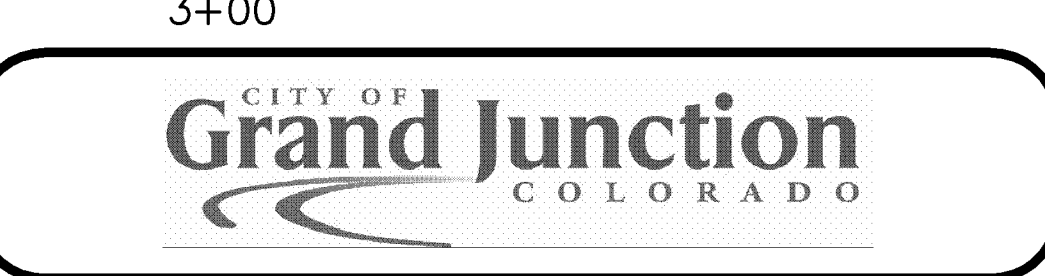
- A 2'-0" TO TOP OF 1 1/2" DIRECT BURY TELEPHONE CABLE
- B 1'-9" TO TOP OF 4" TELEPHONE CONDUIT



REVISION	DESCRIPTION	DATE	DRAWN BY	DATE
REVISION Δ	ADDENDUM 1 - ADD EXISTING WATER & GAS UTILITY LOCATIONS TO PLAN	4-25-06	JCS	2006
REVISION Δ	AS BUILT	9-2006		
REVISION Δ				

SCALES:

PLAN	PROFILE
HORIZONTAL	HORIZONTAL
0 5 10 20	0 5 10 20
	VERTICAL
	2.5 5



PUBLIC WORKS AND UTILITIES ENGINEERING DIVISION

2006 WATERLINE REPLACEMENTS
SANITARY SEWER PLAN AND PROFILES
LINDA LANE

02110806.TIF