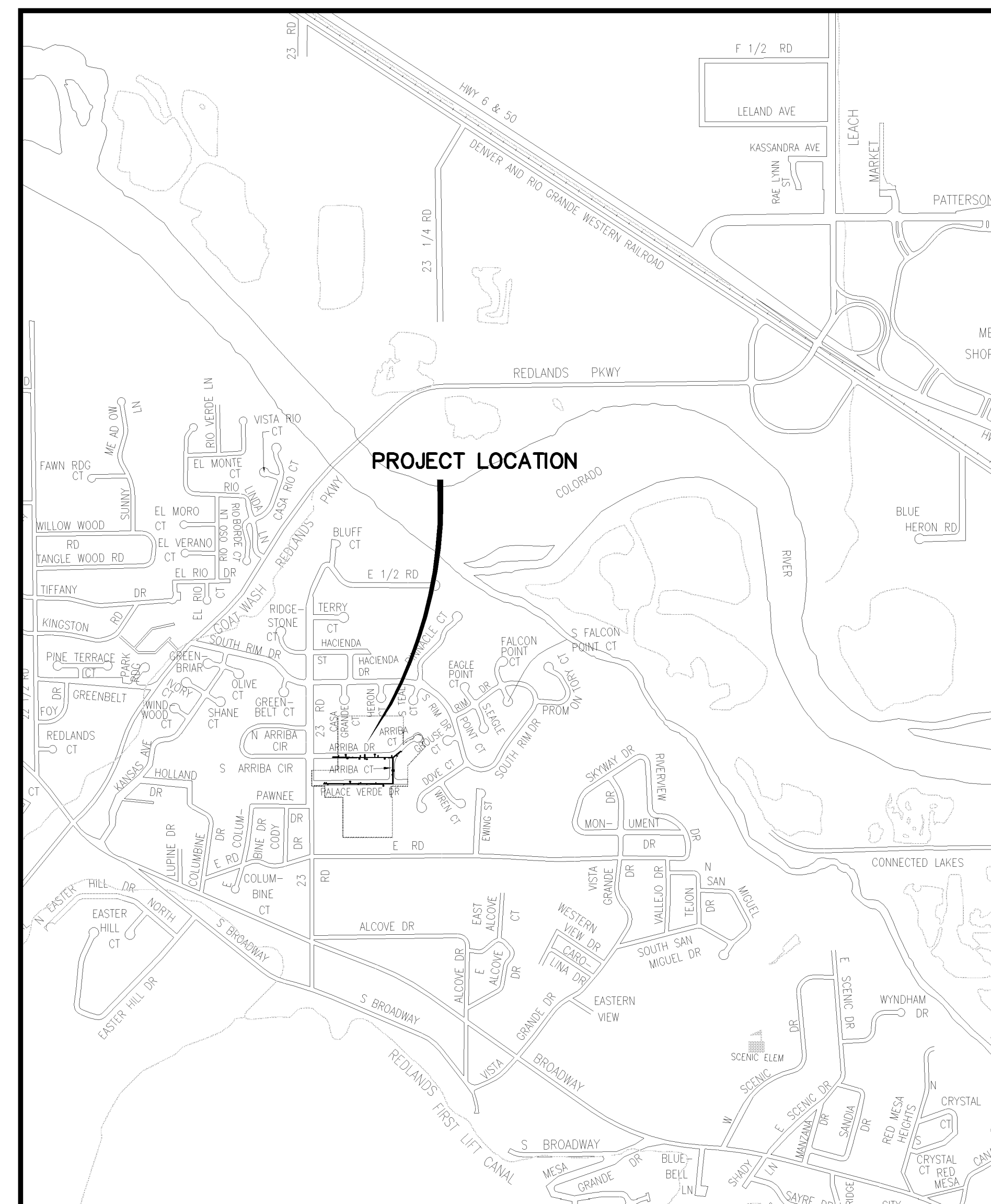


# PALACE VERDES SEWER IMPROVEMENT DISTRICT AUGUST, 2006 AS BUILT 5-2007

VICINITY MAP



- 1 ————— Cover Sheet
- 2 ————— Standard Abbreviations, Legend, and Symbols
- 3 ————— Summary of Approximate Quantities
- 4 ————— Project Control Map
- 5-8 ————— Sanitary Sewer Plan and Profiles

UTILITIES AND AGENCIES								
AGENCY	NAME	POSITION	ROLE	MAILING ADDRESS	STREET ADDRESS	CITY, STATE	VOICE-WK	FAX
GRAND JUNCTION, CITY OF	JUSTIN VENSEL	PROJECT MANAGER	PROJECT MANAGER	250 N. 5th STREET	250 N. 5th STREET	GRAND JCT., CO 81501	(970) 256-4017	(970) 256-4022
GRAND JUNCTION, CITY OF	BRET GUILLORY	UTILITY ENGINEER	SANITARY SEWER	250 N. 5th STREET	250 N. 5th STREET	GRAND JCT., CO 81501	(970) 244-1590	(970) 256-4022
GRAND VALLEY IRRIGATION CO.	PHIL BERTRAND		IRRIGATION	688 26 ROAD	688 26 ROAD	GRAND JCT., CO 81506	(970) 242-2762	
BRESNAN	CHUCK WEIDMAN	MANAGER	CABLE TV	2502 FORESIGHT CIRCLE	2502 FORESIGHT CIRCLE	GRAND JCT., CO 81504	(970) 245-8750	(970) 245-6803
U.S. WEST/QWEST	CHRIS JOHNSON	ENGINEER	TELEPHONE	2524 BLICHMANN AVE	2524 BLICHMANN AVE	GRAND JCT., CO 81504	(970) 244-4311	(970) 240-4349
UTE WATER	DARYL MOORE	SUPERVISOR	WATER	PO BOX 460		GRAND JCT., CO 81502	(970) 242-7491	(970) 242-9189
XCEL	DANNY MOORE	PROJECT MANAGER	GAS	2538 BLICHMANN AVE	2538 BLICHMANN AVE	GRAND JCT., CO 81504	(970) 244-2698	(970) 244-2661
XCEL	STEVE LOPEZ	PROJECT MANAGER	ELECTRIC	2538 BLICHMANN AVE	2538 BLICHMANN AVE	GRAND JCT., CO 81504	(970) 244-2664	(970) 244-2661



*Public Works & Utilities  
Engineering Division*

NOTE: NOTIFY AFFECTED UTILITY VENDOR 48 HOURS PRIOR TO EXCAVATIONS THAT WILL EXPOSE UTILITY LINES. THE COVER SHEET WILL HAVE A LISTING OF UTILITY VENDORS AND TELEPHONE NUMBERS.

REVISION	DESCRIPTION	DATE
REVISION Δ	AS BUILT PER HIGH DESERT SURVEYING RECORDS	12/07-08
REVISION Δ		
REVISION Δ		
REVISION Δ		

<b>DRAWING STATUS:</b>	
<input type="radio"/>	PROGRESS
<input type="radio"/>	FINAL CONSTRUCTION DRAWINGS
<input checked="" type="radio"/>	ASBUILT
<b>DESIGNED BY:</b>	
JUSTIN VENSEL, PROJECT MANAGER	DATE
<b>REVIEWED BY:</b>	
BRET GUILLORY, UTILITY ENGINEER	DATE
<b>AUTHORIZED FOR CONSTRUCTION</b>	
TRENTON C. PRALL, CITY ENGINEER	DATE
<b>ACCEPTED AS CONSTRUCTED</b>	
JUSTIN VENSEL, PROJECT MANAGER	DATE

**ABBREVIATIONS**

AASHTO	AMERICAN ASSOCIATION OF STATE HIGHWAY & TRANSPORTATION OFFICIALS
ABC	AGGREGATE BASE COURSE
AC	ASBESTOS CEMENT
AP	ANGLE POINT
ASB	ANCHORED STRAW BALES
ASP	ALUMINIZED STEEL PIPE
ASTM	AMERICAN SOCIETY FOR TESTING MATERIALS
AWWA	AMERICAN WATER WORKS ASSOCIATION
BC	BACK OF CURB
BF	BUTTERFLY VALVE
BOW	BACK OF WALK
BCR	BEGIN CURB RETURN
BOT	BOTTOM
BSWMP	BETTER STORM WATER MANAGEMENT PRACTICES
CH	CHORD
CAP	CORRUGATED ALUMINUM PIPE
CDOT	COLORADO DEPARTMENT OF TRANSPORTATION
CI	CAST IRON
C,G,& SW	CURB, GUTTER & SIDEWALK
C	CENTER LINE
CL	CLEAR
CMP	CORRUGATED METAL PIPE
CO	CLEAN OUT
COMB	COMBINATION (AS IN STORM SEWER AND SANITARY SEWER)
CONC	CONCRETE
CSM	CITY SURVEY MONUMENT
CSP	CORRUGATED STEEL PIPE
CU	COPPER
DI	DUCTILE IRON
DWY	DRIVEWAY
E	ELECTRIC
ECR	END CURB RETURN
EG	EDGE OF GUTTER
EL	ELEVATION
EP	EDGE OF PAVEMENT
EX	EXISTING
FB	FULL BODY
FC	FACE OF CURB
FG	FINISHED GRADE
F	FLOW LINE
FL	FLANGE
FM	FORCE MAIN
FO	FIBER OPTICS
FS	FAR SIDE
FTG	FOOTING
G	GAS
GB	GRADE BREAK
GM	GAS METER
GV	GATE VALVE
HBP	HOT BITUMINOUS PAVEMENT
HDPE	HIGH DENSITY POLYETHYLENE
INV	INVERT
IRR	IRRIGATION
L	LENGTH OF ARC
LC	LONG CHORD
LF	LINEAR FEET
LL	LONG ARC
LS	SHORT ARC
LT	LEFT
MB	MAILBOX
MCSM	MESA COUNTY SURVEY MONUMENT
MH	MANHOLE
MJ	MECHANICAL JOINT
MW	MILL WRAP
N/A	NOT APPLICABLE
NIC	NOT IN CONTRACT
NOP	NO ONE PERSON
NRCP	NON-REINFORCED CONCRETE PIPE
NS	NEAR SIDE
NTS	NOT TO SCALE
OHP	OVERHEAD POWER
OHT	OVERHEAD TELEPHONE
PC	POINT OF CURVATURE
PCC	POINT OF COMPOUND CURVATURE
PE	POLYETHYLENE
PERF	PERFORATED
PI	POINT OF INTERSECTION
PIP	PLASTIC IRRIGATION PIPE
POC	POINT ON CURVE
POT	POINT ON TANGENT
PR	PROPOSED
PRC	POINT OF REVERSE CURVATURE
PT	POINT OF TANGENCY
PVC	POLYVINYL CHLORIDE
R	RADIUS
RCP	REINFORCED CONCRETE PIPE
REQ'D	REQUIRED
RG	RESTRAINED GLANDS
RL	LONG RADIUS
ROW	RIGHT OF WAY
RP	RADIUS POINT
RR	RAIL ROAD
RS	SHORT RADIUS
RT	RIGHT
S	SLOPE
SAN	SANITARY
SC	SHORT CHORD
SCD	STANDARD CONTRACT DOCUMENTS
SCH	SCHEDULE
SF	SILT FENCE
SL	SECTION LINE
SSRB	STANDARD SPECIFICATIONS FOR ROAD & BRIDGE CONSTRUCTION
SSJUJ	STANDARD SPECIFICATIONS FOR CONSTRUCTION OF UNDERGROUND UTILITIES
STA	STATION
STL	STEEL
STM	STORM
T	TELEPHONE
TAN	LENGTH OF TANGENT
TC	TOP OF CURB
TH	TEST HOLE
TV	TELEVISION
(TYP)	TYPICAL
UU	UNDERGROUND UTILITIES
VC	VERTICAL CURVE
VCP	VITRIFIED CLAY PIPE
VPC	VERTICAL POINT OF CURVATURE
VPC	VERTICAL POINT OF CURVATURE
VPC	VERTICAL POINT OF COMPOUND CURVATURE
VPC	VERTICAL POINT OF REVERSE CURVATURE
VPI	VERTICAL POINT OF INTERSECTION
VPT	VERTICAL POINT OF TANGENCY
W	WATER
Δ	DELTA ANGLE

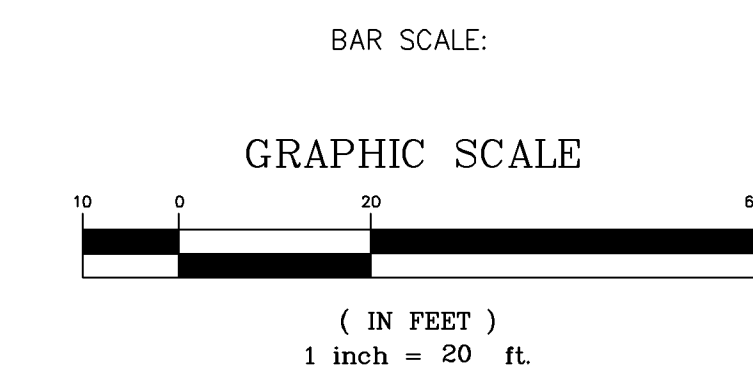
**LEGEND**

BSWMP DRAINAGE BASIN BOUNDARY	
BSWMP ANCHORED STRAW BALES	
BSWMP SILT FENCE	
BUILDING	
CONCRETE CURB AND GUTTER	
CONCRETE CURB, GUTTER, & SIDEWALK	
CONCRETE DITCH	
CONCRETE SIDEWALK	
CULVERT	
EARTH DITCH	
EDGE OF GRAVEL	
EDGE OF PAVEMENT	
FENCE (BARBED WIRE)	
FENCE (CHAIN LINK)	
FENCE (IRON)	
FENCE (PLASTIC)	
FENCE (TEMPORARY CONSTRUCTION)	
FENCE (WOOD)	
FENCE (WOVEN WIRE)	
GUARD RAIL	
HATCHING: INDICATES ASPHALT REMOVAL	
HATCHING: INDICATES CONCRETE REMOVAL	
HATCHING: INDICATES STAGING AREA	
LINE (CENTER OF IMPROVEMENTS)	
LINE (CITY LIMITS)	
LINE (CONTROL)	
LINE (EASEMENT)	
LINE (MONUMENT/SECTION)	
LINE (PROPERTY)	
LINE (RIGHT OF WAY)	
MATCH LINE	
PIPE (IRRIGATION)	
PIPE (SIPHON)	

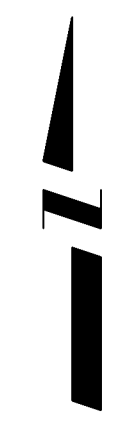
PROPOSED CONCRETE CURB AND GUTTER	
PROPOSED CONCRETE CURB, GUTTER, & SIDEWALK	
PROPOSED CONCRETE SIDEWALK	
PROPOSED "WET" UTILITIES (CONSTRUCTION NOTE WILL INDICATE TYPE, SIZE, AND MATERIAL OF NEW MAIN)	
ALL PROPOSED FEATURES NOT SHOWN IN LEGEND WILL BE SHOWN THE SAME AS THEIR EXISTING COUNTERPART, BUT INDICATED BY BOLDER LINETYPE	
RAIL ROAD	
RETAINING WALL	
STRIPING (CONTINUOUS WHITE)	
STRIPING (DASHED WHITE)	
STRIPING (CONTINUOUS YELLOW)	
STRIPING (DASHED YELLOW)	
TOP OF SLOPE	
CONTOUR LINES (SHOWN BETWEEN TOP & TOE)	
TOE OF SLOPE	
TRAFFIC DETECTOR LOOP	
UTILITY LINE (ABANDON) (THIS CASE A WATER LINE)	
UTILITY LINE (CABLE TV)	
UTILITY LINE (ELECTRIC)	
UTILITY LINE (FIBER OPTIC)	
UTILITY LINE (GAS)	
UTILITY LINE (HIGH VOLTAGE OVERHEAD POWER)	
UTILITY LINE (OVERHEAD POWER)	
UTILITY LINE (OVERHEAD TELEPHONE)	
UTILITY LINE (SANITARY SEWER)	
UTILITY LINE (SANITARY SEWER FORCE MAIN)	
UTILITY LINE (SANITARY SEWER SERVICE)	
UTILITY LINE (STORM SEWER)	
UTILITY LINE (STORM SEWER, PERFORATED)	
UTILITY LINE (STORM/SANITARY SEWER SEWER COMBINATION)	
UTILITY LINE (TELEPHONE)	
UTILITY LINE (WATER)	

**SYMBOLS**

BENCH MARK	
CATCH BASIN	
CLEAN OUT	
CURB STOP	
FIRE HYDRANT	
GUY WIRE ANCHOR	
HEADGATE	
IRRIGATION PUMP	
MAILBOX	
MANHOLE (ELECTRIC)	
MANHOLE (GAS)	
MANHOLE (SANITARY/STORM)	
MANHOLE (TELEPHONE)	
MANHOLE (TV)	
MANHOLE (WATER)	
METER (GAS)	
METER (WATER)	
PEDESTAL (TELEPHONE)	
PEDESTAL (TV)	
PROPERTY PIN	
PULL BOX	
REDUCER FITTING	
SIGN OR POST (SIGN TYPE NOTED)	
SPRINKLER HEAD	
STREET LIGHT	
SURVEY MONUMENT (CITY)	
SURVEY MONUMENT (TYPE NOTED)	
TEST HOLE	
TRAFFIC PAINT MARKING	
TRAFFIC SIGNAL POLE AND MAST ARM	
UTILITY POLE	
VALVE (GAS)	
VALVE (IRRIGATION)	
VALVE (WATER)	
VEGETATION (HEDGE OR BUSH)	
VEGETATION (TREE STUMP)	
VEGETATION (TREE) (CALIPER SIZE NOTED)	
WATER HYDRANT	
WEIR	
YARD LIGHT	



NORTH ARROW:

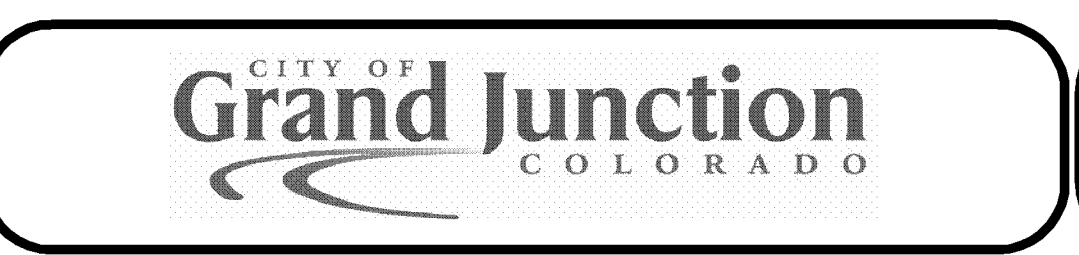


N:\LandProj\F48227 (Replace Verdes STD)\dwg\BASE-F48227.dwg, 2, 5/29/2007 12:07:33 PM

REVISION	DESCRIPTION	DATE

DRAWN BY	JCS	DATE	4-02
DESIGNED BY		DATE	
CHECKED BY		DATE	
APPROVED BY		DATE	

SCALE	
PLAN	PROFILE
HORIZ. 1"=20'	HORIZ.
	VERT.



**PUBLIC WORKS AND UTILITIES ENGINEERING DIVISION**

**CITY OF GRAND JUNCTION STANDARD ABBREVIATIONS, LEGEND, AND SYMBOLS SHEET**

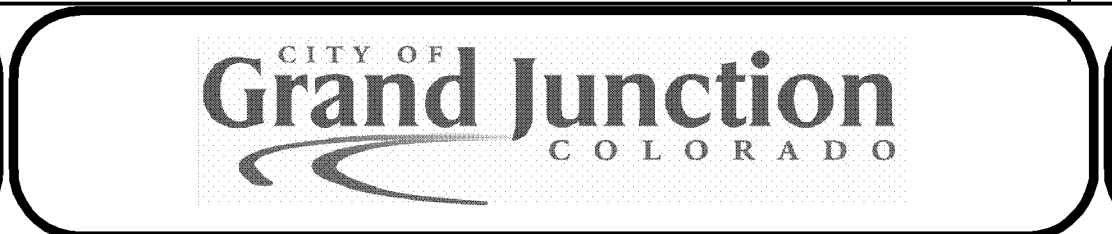
**Quantities for Palace Verdes Sewer Improvement District (7-18-06) (JCS/JV)**

Item No.	CDOT/ City Reference no.	Description	Quantity	Unit	Quantity	Unit	Quantity	Unit	Quantity	Unit	Quantity	Unit
			Sheet 5		Sheet 6		Sheet 7		Sheet 8		Total	
1	103.16	Import pit run material, include excavation, haul, and disposal of unsuitable material.		TON		TON		TON		TON	50	TON
2	104.0	Vertical Relocation Of Existing 2" PVC Ute Waterline		EA	1	EA	1	EA		EA	2	EA
3	104.0	Vertical Relocation Of Existing 10" AC Irrigation line		EA		EA	1	EA		EA	1	EA
4	104.0	Remove Existing Pipe and Replace with 12" DR14 C900 Class 200	40	LF		LF		LF		LF	40	LF
5	108.2	6" Gravity Sewer Pipe (SDR-35) w/ Native backfill. Includes granular bedding and haunching material and clay cut-off wall.	400	LF	299	LF	490	LF	455	LF	1644	LF
6	108.2	4" Gravity Sewer Pipe (SDR-35) w/ native backfill. Includes granular bedding and haunching material.	146	LF	194	LF	100	LF	200	LF	640	LF
7	108.3	Sewer Service Tap, 6" X 4" Full Body Wye w/ 4" 45 degree bend.	6	EA	6	EA	4	EA	8	EA	24	EA
8	108.5	Sanitary Sewer Shallow Manhole w/ Components (48" I.D.)		EA	1	EA		EA		EA	1	EA
9	108.5	Sanitary Sewer Basic Manhole w/ Components (48" I.D.)		EA		EA		EA	2	EA	2	EA
10	108.5	Sanitary Sewer Basic Manhole w/ Components (48" I.D.) with epoxy coated invert	1	EA		EA	1	EA		EA	2	EA
11	108.5	Sanitary Sewer Shallow Manhole w/ Components (48" I.D.) with epoxy coated invert		EA	1	EA		EA		EA	1	EA
12	108.5	Manhole Barrel Section (D > 5')(48" I.D.).	1.4	VF		VF		VF	6	VF	7.4	VF
13	108.5	Connect to Existing Manhole (6" Pipe)	1	EA		EA		EA		EA	1	EA
14	202.0	Removal of Asphalt Mat (Planning) for Trench Excavation	277	SY	270	SY	452	SY	450	SY	1449	SY
15	202/608	Remove And Replace Concrete Or Asphalt Curb And Gutter/Curbing/Gutter/Border. Size And Style Vary. Match Existing.		LF		LF	6	LF	6	LF	12	LF
16	209.0	Dust Abatement									1	LS
17	209.0	Portable Sanitary Facility									1	LS
18	210.0	Reset Irrigation System Components (Per Each Property)	4	EA	2	EA	2	EA	3	EA	11	EA
19	212.0	Sod. Reuse existing install 12" Topsoil	18	SY	5	SY	10	SY	34	SY	67	SY
20	212.0	Reset Wood Border	18	LF	12	LF		LF		LF	30	LF
21	304.0	Aggregate Base Course (Class 6) (4" thick) (shoulders and gravel driveways)	164	SY	104	SY	30	SY	45	SY	343	SY
22	304.0	Aggregate Base Course (Class 6) (6" thick)	277	SY	270	SY	452	SY	450	SY	1449	SY
23	304.0	Washed Rock Surface Course (2-3" thick)	15	SY	36	SY		SY	10	SY	61	SY
24	401.0	HMA (3" Thick) (Grading SX Binder 64-22) (One 3" Lift)	277	SY	270	SY	452	SY	450	SY	1449	SY
25	625.0	Construction Surveying									1	LS
26	626.0	Mobilization									1	LS
27	630.0	Traffic Control									1	LS
28	CGC56	News Letter									1	LS
FA		Force Account									1	LS

N:\LandProg\48227 (Palace Verdes STD)\dwg\BASE-F48227.dwg, 3, 5/29/2007 12:08:06 PM

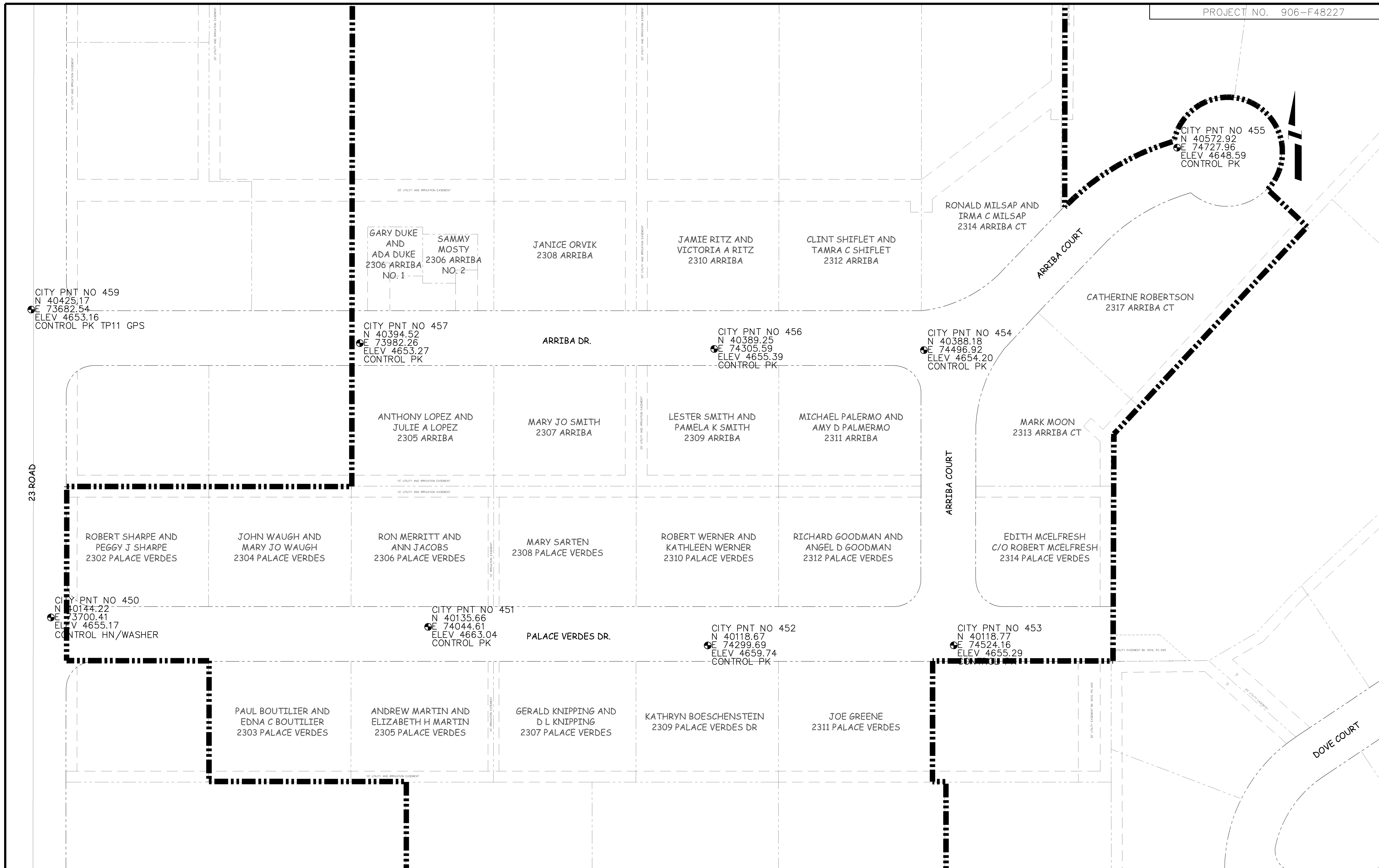
REVISION $\Delta$ _____	DATE _____	DRAWN BY _____	DATE _____
REVISION $\Delta$ _____	DATE _____	DESIGNED BY _____	DATE _____
REVISION $\Delta$ _____	DATE _____	CHECKED BY _____	DATE _____
REVISION $\Delta$ _____	DATE _____	APPROVED BY _____	DATE _____

SCALE \_\_\_\_\_  
N.T.S.



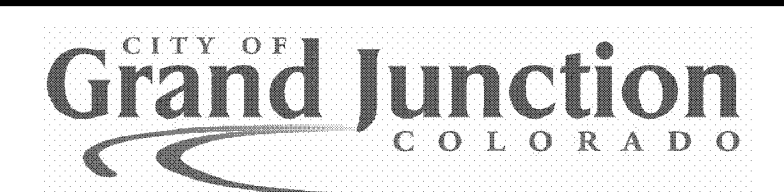
**PUBLIC WORKS AND UTILITIES ENGINEERING DIVISION**

**PALACE VERDES SEWER IMPROVEMENT DISTRICT SUMMARY OF APPROXIMATE QUANTITIES**



N:\LandProj\Palace Verdes STD\dwg\BASE-F48227.dwg, 4 (project control map), 5/29/2007 12:09:34 PM

REVISION	DESCRIPTION	DATE	DRAWN BY	DATE	SCALE
					N.T.S.



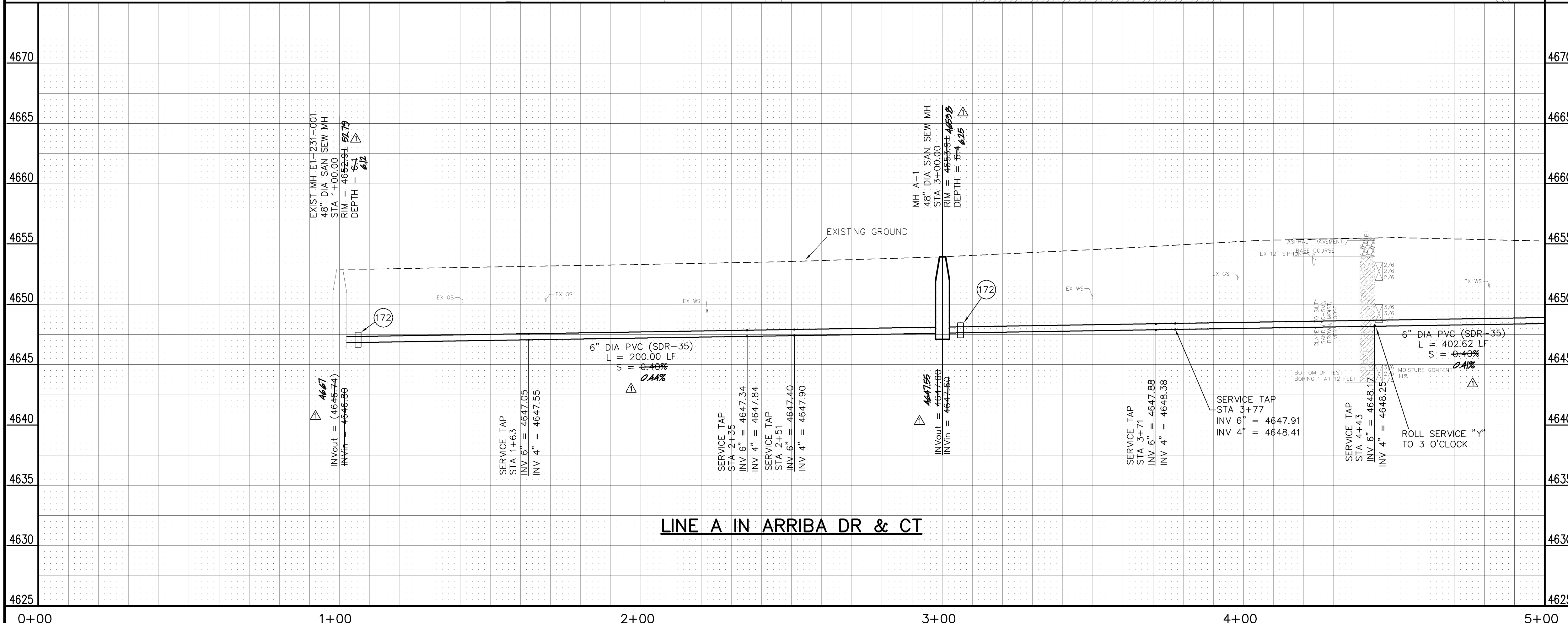
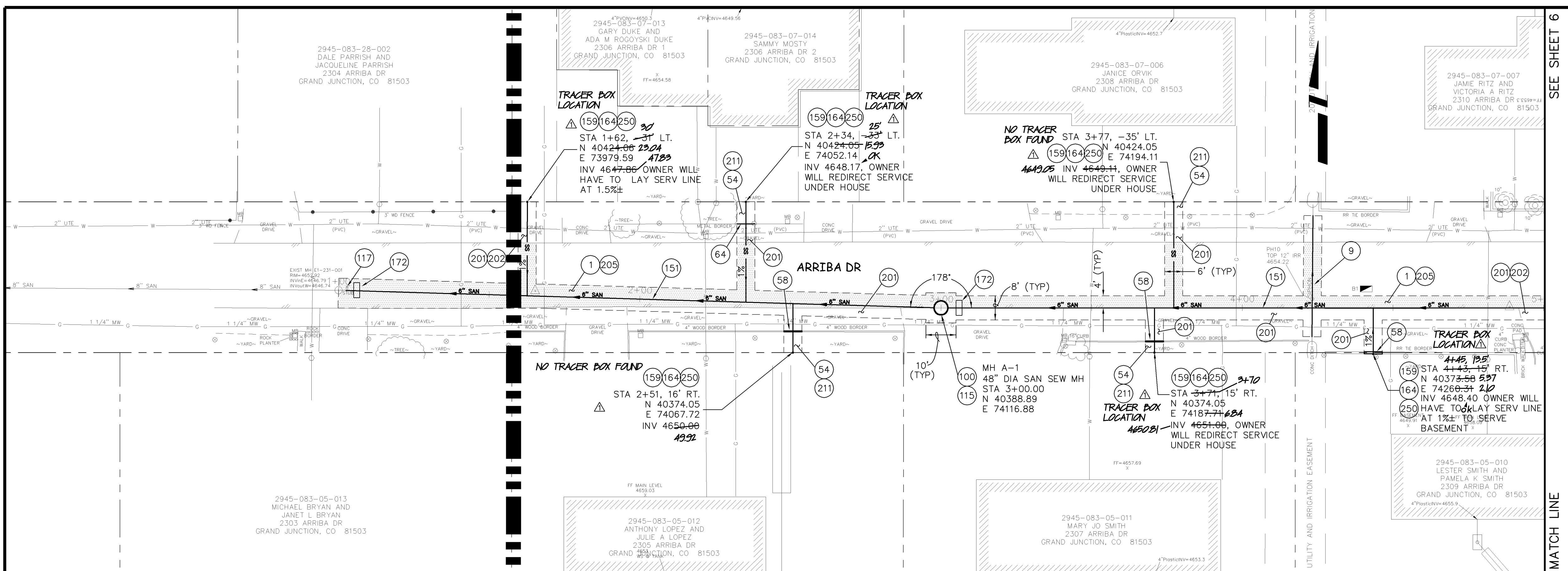
**PUBLIC WORKS  
AND UTILITIES  
ENGINEERING DIVISION**

**PALACE VERDES SEWER IMPROVEMENT DISTRICT  
PROJECT CONTROL MAP**

SEE SHEET 6

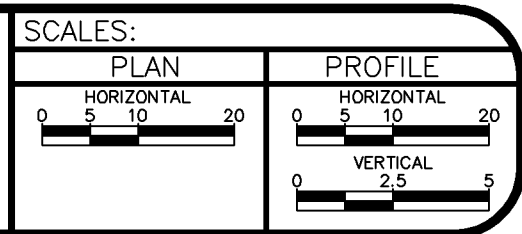
MATCH LINE

- 1 103.30 - REMOVAL OF ASPHALT MAT (PLANNING) FOR TRENCH EXCAVATION: CUT AND REMOVE BY FULL-DEPTH MILL ASPHALT AS SHOWN.
- 9 104.00 - REMOVE EXISTING PIPE AND REPLACE WITH 12" DR14 C900 CLASS 200 FROM STRUCTURE TO STRUCTURE. PAY ITEM INCLUDES COST OF CONNECTING BACK TO EXISTING STRUCTURES AT EITHER END AND ALL NECESSARY FITTINGS REQUIRED..
- 54 210.00 - RESET IRRIGATION SYSTEM COMPONENTS (PER EACH PROPERTY).
- 58 210.00 - RESET WOOD BORDER.
- 64 210.00 - RESET METAL EDGER. COST IS INCIDENTAL TO COST OF SEWER PIPE INSTALLATION.
- 100 102.11/108.5 - STANDARD 48" DIAMETER SANITARY SEWER MANHOLE; INCLUDES CONNECTION OF ADJACENT SEWER LINE, FORMING INVERTS AND ADJUSTING TO FINAL GRADE. (SEE CITY OF GRAND JUNCTION STANDARD DETAIL SS-02).
- 115 EPOXY COAT MANHOLE INVERT. COST IS INCIDENTAL TO COST OF MANHOLE INSTALLATION.
- 117 EXISTING MANHOLE HAS AN 8" PIPE STUBBED OUT WITH A FLEXIBLE PIPE CONNECTOR. CONTRACTOR SHALL CONNECT THE 6" SEWER PIPE TO THE EXISTING MANHOLE IN SUCH A WAY THAT ENSURES THE INVERT OF THE 6" PIPE WILL MATCH THE EXISTING INVERT OF THE MANHOLE AND A WATERTIGHT CONNECTION.
- 151 102.90 - 6" GRAVITY SEWER PIPE (SDR-35 PVC). INCLUDES TYPE A BEDDING AND HAUNCHING MATERIAL AND BACKFILL OF TRENCH WITH NATIVE MATERIALS MEETING 103.16 EARTH BACKFILL MATERIAL.
- 159 102/103/104 - 4" SEWER SERVICE TAP, 6" X 4" FULL BODY WYE (SEE STD. DETAIL SS-06).
- 164 102/103/104 - 4" SDR-35 PVC SANITARY SERVICE LINE WITH NATIVE BACKFILL MEETING 103.16 EARTH BACKFILL MATERIAL. INCLUDES SINGLE SERVICE LINE PER TRENCH, TYPE A BEDDING AND HAUNCHING, AND END-OF-SERVICE CAP.
- 172 103.00 - CLAY CUT-OFF WALL (INCIDENTAL TO SEWER INSTALLATION PAY ITEM).
- 201 304.00 - 4" CLASS 6 ABC FOR SHOULDERS AND GRAVEL DRIVEWAYS. COMPACTED TO 90% AASHTO T-180.
- 202 304.00 - WASHED ROCK SURFACE COURSE FOR GRAVEL DRIVEWAYS. MATCH EXISTING TYPE. THICKNESS IS 2" MIN AND 3" MAX.
- 205 103/304/401 - PAVEMENT AND ROAD BASE REPLACEMENT ON SIDE STREETS AND DRIVEWAYS: 3" HOT BITUMINOUS PAVEMENT (GRADING SX, PG 64-22 OIL), OVER 6" CLASS 6 ABC (SEE STD. DETAIL GU-03). PAID PER SY.
- 211 212 - SOD.
- 250 CONTRACTOR IS RESPONSIBLE FOR REPAIR COSTS ASSOCIATED WITH ANY/ALL DAMAGE TO PRIVATE PROPERTY BEHIND ROW LINE OR EASEMENT LIMITS.



	1+00	2+00	3+00	4+00	5+00
	1+00	2+00	3+00	4+00	5+00

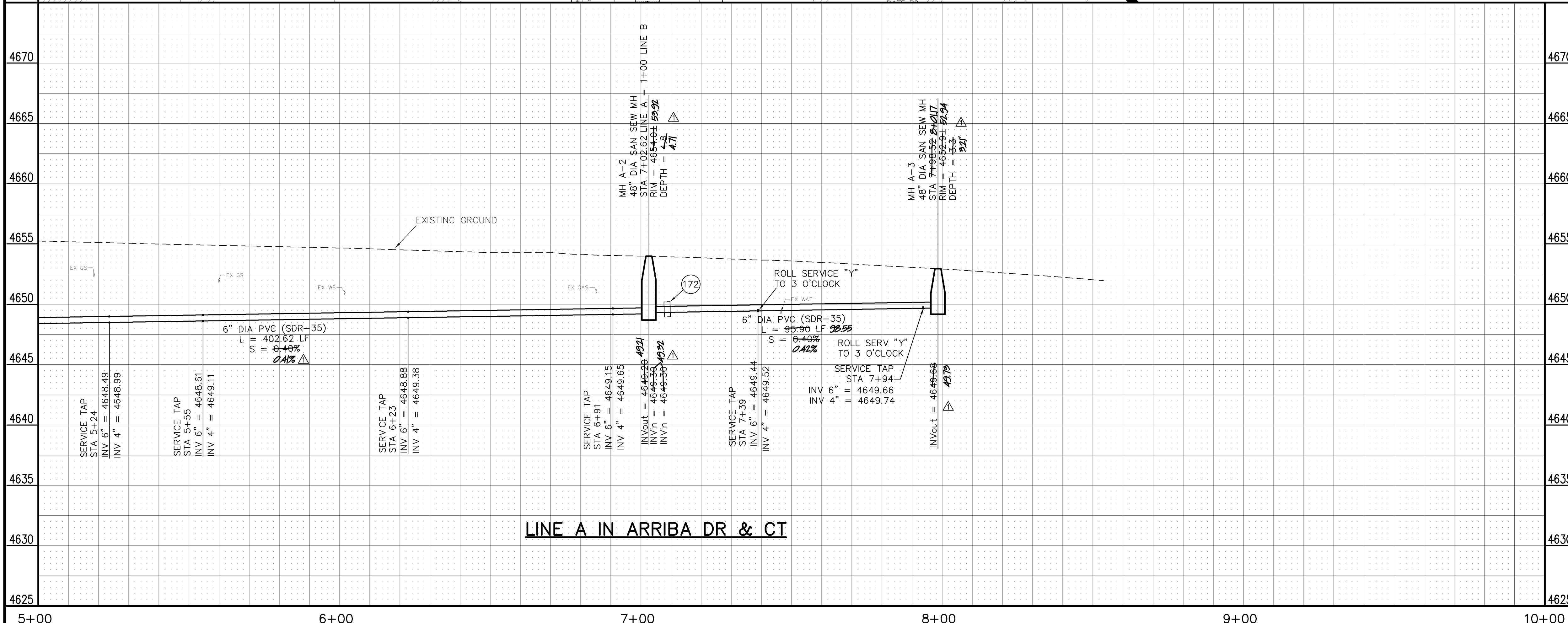
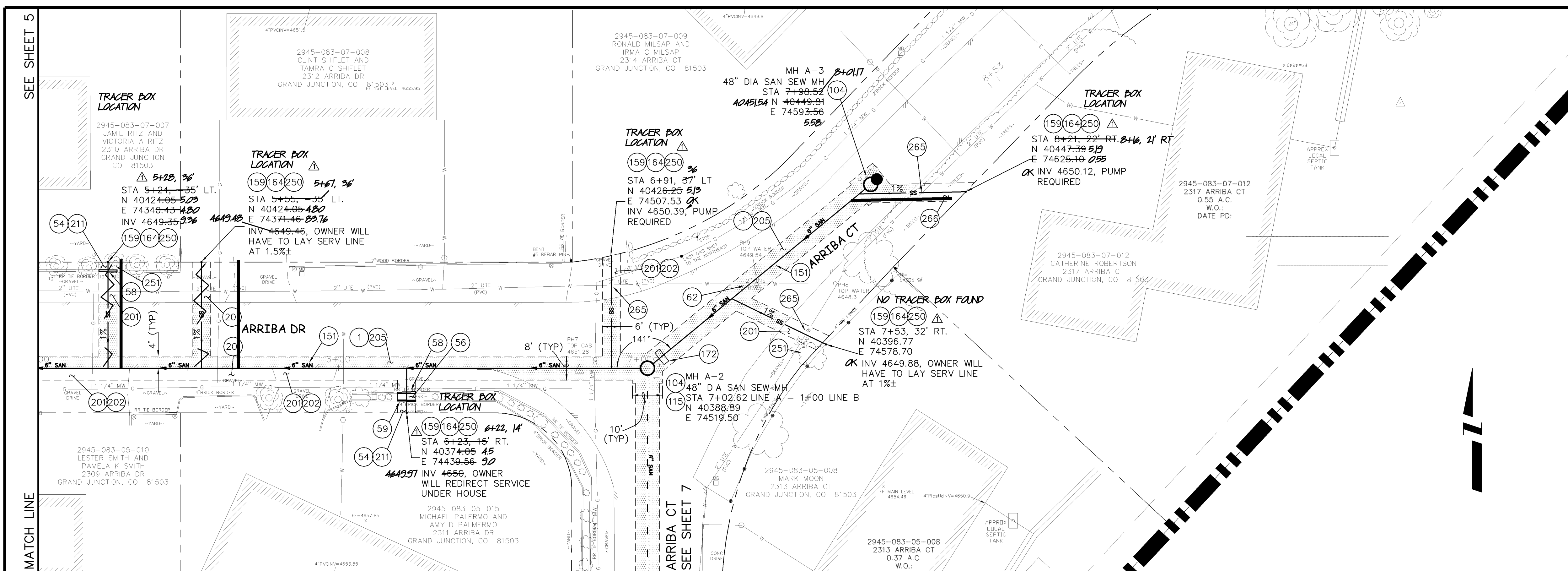
REVISION	DESCRIPTION	DATE	DRAWN BY	DATE
1	AS BUILT PER HIGH DESERT SURVEYING RECORDS	12/07-08	JCS	2006
2				
3				
4				



**PUBLIC WORKS  
AND UTILITIES  
ENGINEERING DIVISION**

**ARRIBA DR., FROM 230' TO 630' EAST OF 23 RD  
SANITARY SEWER PLAN AND PROFILES  
STA 0+00 TO STA 5+00**

N:\LandProj\F48227 (Replace Verdes STD)\dwg\BASE-F48227.dwg, 5 (ARRIBA DR), 5/29/2007 12:10:23 PM



- 1 103.30 - REMOVAL OF ASPHALT MAT (PLANING) FOR TRENCH EXCAVATION: CUT AND REMOVE BY FULL-DEPTH MILL ASPHALT AS SHOWN.
- 54 210.00 - RESET IRRIGATION SYSTEM COMPONENTS (PER EACH PROPERTY).
- 56 210.00 - RESET LANDSCAPE APPURTENANCES (DECORATIVE ROCK, WOOD CHIPS, TREE BARK). MATCH EXISTING W/MIN THICKNESS = 2". REUSE EXISTING IF KEPT FREE OF FINES/DETRITUS. LANDSCAPING FABRIC REQUIRED. COST IS INCIDENTAL TO COST OF SEWER PIPE INSTALLATION.
- 58 210.00 - RESET WOOD BORDER.
- 59 210.00 - RESET STONE/ROCK/BRICK/MASONRY BORDER. COST IS INCIDENTAL TO COST OF SEWER PIPE INSTALLATION.
- 62 104.00 - VERTICAL RELOCATION OF EXISTING 2" PVC WATERLINE PER STD DETAILS W-07, W-08, W-12. RELOCATED PORTION OF WATERLINE SHALL BE C-900, CLASS 150, DR-18, PVC AND FITTINGS SHALL BE DIP 45 DEGREE BENDS. LOWER WATERLINE TO PROVIDE A MINIMUM SEPARATION OF 2 FEET BETWEEN SEWER AND WATER. ALL JOINTS SHALL BE RESTRAINED. SWAB AND SPRAY DISINFECT. NOTIFY UTE WATER 3 DAYS PRIOR TO WORK. ALL WORK NECESSARY TO COMPLETE THE LOWERING SHALL BE PAID UNDER THE "VERTICAL RELOCATION OF EXISTING WATERLINE (2"PVC)" PAY ITEM.
- 104 102.11 - 48" DIAMETER SHALLOW SANITARY SEWER MANHOLE (D < 5'); INCLUDES CONNECTION OF ADJACENT SEWER LINE, FORMING INVERTS, LID SLAB IF REQUIRED, AND ADJUSTING TO FINAL GRADE. (SEE STD. DETAIL SS-03).
- 115 EPOXY COAT MANHOLE INVERT. COST IS INCIDENTAL TO COST OF MANHOLE INSTALLATION.
- 151 102.90 - 6" GRAVITY SEWER PIPE (SDR-35 PVC). INCLUDES TYPE A BEDDING AND HAUNCHING MATERIAL AND BACKFILL OF TRENCH WITH NATIVE MATERIALS MEETING 103.16 EARTH BACKFILL MATERIAL.
- 159 102/103/104 - 4" SEWER SERVICE TAP, 6" X 4" FULL BODY WYE (SEE STD. DETAIL SS-06).
- 164 102/103/104 - 4" SDR-35 PVC SANITARY SERVICE LINE WITH NATIVE BACKFILL MEETING 103.16 EARTH BACKFILL MATERIAL. INCLUDES SINGLE SERVICE LINE PER TRENCH, TYPE A BEDDING AND HAUNCHING, AND END-OF-SERVICE CAP.
- 172 103.00 - CLAY CUT-OFF WALL (INCIDENTAL TO SEWER INSTALLATION PAY ITEM).
- 201 304.00 - 4" CLASS 6 ABC FOR SHOULDERS AND GRAVEL DRIVEWAYS. COMPACTED TO 90% AASHTO T-180.
- 202 304.00 - WASHED ROCK SURFACE COURSE FOR GRAVEL DRIVEWAYS. MATCH EXISTING TYPE. THICKNESS IS 2" MIN AND 3" MAX.
- 205 103/304/401 - PAVEMENT AND ROAD BASE REPLACEMENT ON SIDE STREETS AND DRIVEWAYS: 3" HOT BITUMINOUS PAVEMENT (GRADING SX, PG 64-22 OIL), OVER 6" CLASS 6 ABC (SEE STD. DETAIL GU-03). PAID PER SY.
- 211 212 - SOD.
- 250 CONTRACTOR IS RESPONSIBLE FOR REPAIR COSTS ASSOCIATED WITH ANY/ALL DAMAGE TO PRIVATE PROPERTY BEHIND ROW LINE OR EASEMENT LIMITS.
- 251 PROTECT TREE/BUSH. REFER TO SPECIAL PROVISIONS FOR ROOT TREATMENT.
- 265 SEWER SERVICE LINE SHALL BE INSTALLED OVER THE EXISTING UTE WATER LINE AT THIS LOCATION.
- 266 CONTRACTOR SHALL TRY TO INSTALL SEWER SERVICE TO ROW LINE AS SHOWN WITHOUT REMOVING TREES. TREES MAY BE TRIMMED AS NEEDED TO INSTALL SERVICE WITHOUT HARM TO TREE.

REVISION	DESCRIPTION	DATE	DRAWN BY	DATE
REVISION $\Delta$	AS BUILT PER HIGH DESERT SURVEYING RECORDS	12/07-08	JCS	2006
REVISION $\Delta$				
REVISION $\Delta$				

SCALES: PLAN HORIZONTAL 1" = 20' PROFILE VERTICAL 1" = 5'

**PUBLIC WORKS AND UTILITIES ENGINEERING DIVISION**

**ARRIBA DR., FROM 630' EAST OF 23 RD TO ARRIBA CT  
SANITARY SEWER PLAN AND PROFILES  
STA 5+00 TO STA 10+00**

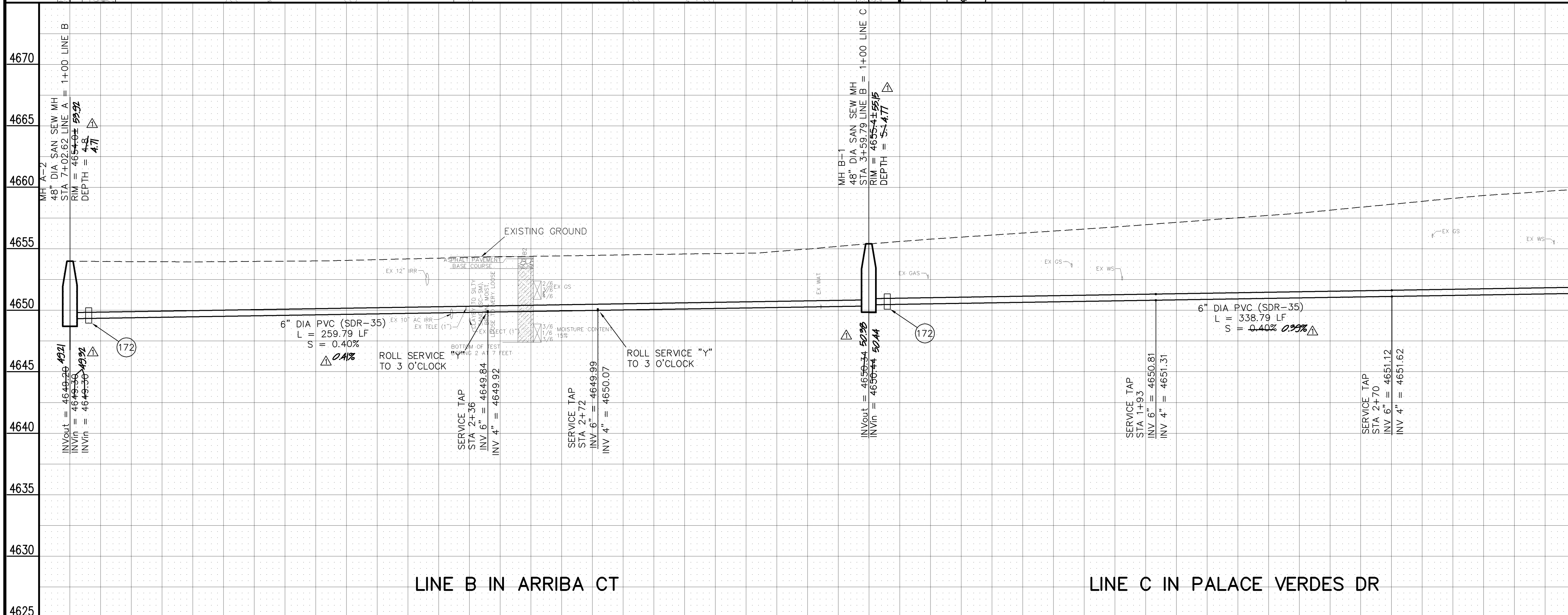
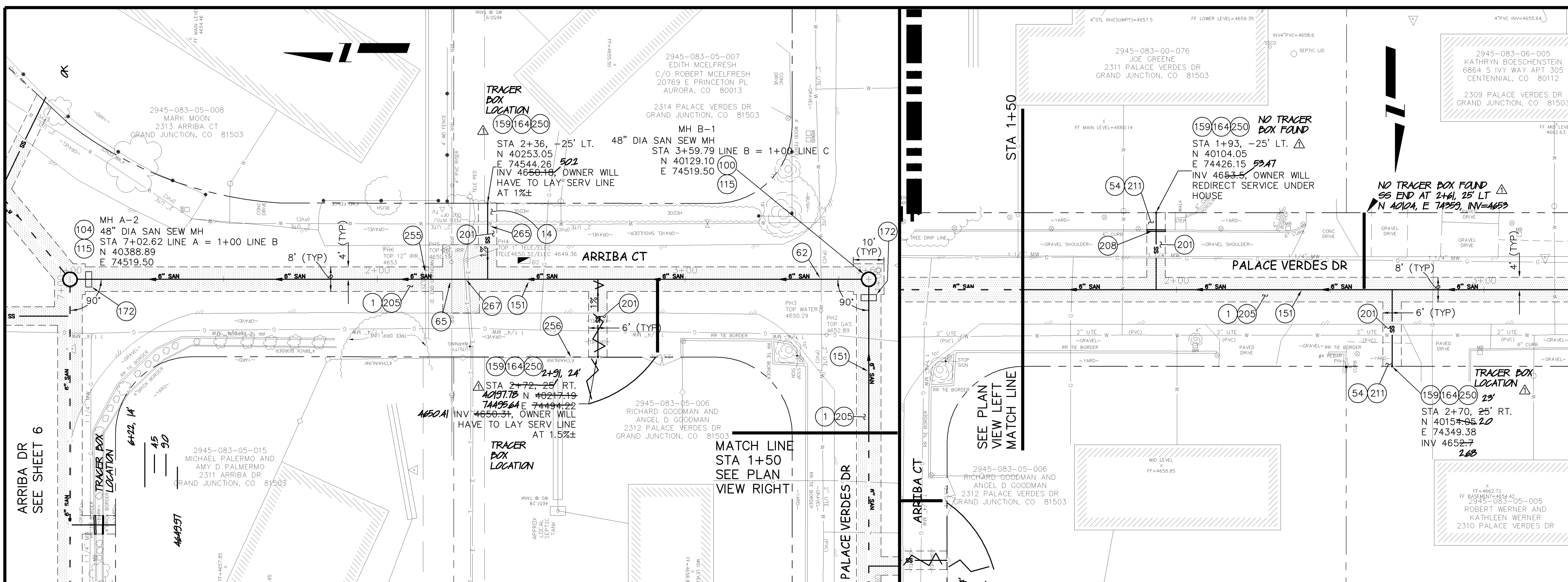
N:\LandProj\F48227 (Replace Verdes STD)\dwg\BASE-F48227.dwg, 6 (ARRIBA DR-CT), 5/29/2007 12:11:39 PM

SEE SHEET 8

MATCH LINE

4670  
4665  
4660  
4655  
4650  
4645  
4640  
4635  
4630  
4625

- 1 103.30 - REMOVAL OF ASPHALT MAT (PLANNING) FOR TRENCH EXCAVATION: CUT AND REMOVE BY FULL-DEPTH MILL ASPHALT AS SHOWN.
- 14 202.00 - TRIM/REMOVE HEDGE AS NEEDED TO FACILITATE SEWER CONSTRUCTION. COST IS INCIDENTAL TO COST OF SEWER PIPE INSTALLATION.
- 54 210.00 - RESET IRRIGATION SYSTEM COMPONENTS (PER EACH PROPERTY).
- 62 104.00 - VERTICAL RELOCATION OF EXISTING 2" PVC WATERLINE PER STD DETAILS W-07, W-08, W-12. RELOCATED PORTION OF WATERLINE SHALL BE C-900, CLASS 150, DR-18, PVC AND FITTINGS SHALL BE DIP 45 DEGREE BENDS. LOWER WATERLINE TO PROVIDE A MINIMUM SEPARATION OF 2 FEET BETWEEN SEWER AND WATER. ALL JOINTS SHALL BE RESTRAINED. SWAB AND SPRAY DISINFECT. NOTIFY UTE WATER 3 DAYS PRIOR TO WORK. ALL WORK NECESSARY TO COMPLETE THE LOWERING SHALL BE PAID UNDER THE "VERTICAL RELOCATION OF EXISTING WATERLINE (2"PVC)" PAY ITEM.
- 65 104.00 - VERTICAL RELOCATION OF EXISTING 10" AC IRRIGATION. RELOCATED PORTION OF IRRIGATION LINE SHALL BE C-900, CLASS 100, DR-25, PVC AND FITTINGS SHALL BE DIP 45 DEGREE BENDS. LOWER IRRIGATION LINE TO PROVIDE A MINIMUM SEPARATION OF 1 FOOT BETWEEN SEWER AND IRRIGATION.
- 100 102.11/108.5 - STANDARD 48" DIAMETER SANITARY SEWER MANHOLE; INCLUDES CONNECTION OF ADJACENT SEWER LINE, FORMING INVERTS AND ADJUSTING TO FINAL GRADE. (SEE CITY OF GRAND JUNCTION STANDARD DETAIL SS-02).
- 104 102.11 - 48" DIAMETER SHALLOW SANITARY SEWER MANHOLE (D < 5'); INCLUDES CONNECTION OF ADJACENT SEWER LINE, FORMING INVERTS, LID SLAB IF REQUIRED, AND ADJUSTING TO FINAL GRADE. (SEE STD. DETAIL SS-03).
- 115 EPOXY COAT MANHOLE INVERT. COST IS INCIDENTAL TO COST OF MANHOLE INSTALLATION.
- 151 102.90 - 6" GRAVITY SEWER PIPE (SDR-35 PVC). INCLUDES TYPE A BEDDING AND HAUNCHING MATERIAL AND BACKFILL OF TRENCH WITH NATIVE MATERIALS MEETING 103.16 EARTH BACKFILL MATERIAL.
- 159 102/103/104 - 4" SEWER SERVICE TAP, 6" X 4" FULL BODY WYE (SEE STD. DETAIL SS-06).
- 164 102/103/104 - 4" SDR-35 PVC SANITARY SERVICE LINE WITH NATIVE BACKFILL MEETING 103.16 EARTH BACKFILL MATERIAL. INCLUDES SINGLE SERVICE LINE PER TRENCH, TYPE A BEDDING AND HAUNCHING, AND END-OF-SERVICE CAP.
- 172 103.00 - CLAY CUT-OFF WALL (INCIDENTAL TO SEWER INSTALLATION PAY ITEM).
- 201 304.00 - 4" CLASS 6 ABC FOR SHOULDERS AND DRIVEWAYS. COMPACTED TO 90% AASHTO T-180.
- 205 103/304/401 - PAVEMENT AND ROAD BASE REPLACEMENT ON SIDE STREETS AND DRIVEWAYS: 3" HOT BITUMINOUS PAVEMENT (GRADING SX, PG 64-22 OIL), OVER 6" CLASS 6 ABC (SEE STD. DETAIL GU-03). PAID PER SY.
- 208 202.00/608.00 - REMOVE AND REPLACE CONCRETE OR ASPHALT CURB AND GUTTER/CURBING/GUTTER/BORDER. SIZE AND STYLE VARY. MATCH EXISTING.
- 211 212 - SOD.
- 250 CONTRACTOR IS RESPONSIBLE FOR REPAIR COSTS ASSOCIATED WITH ANY/ALL DAMAGE TO PRIVATE PROPERTY BEHIND ROW LINE OR EASEMENT LIMITS.
- 255 SPAN/SUPPORT/PROTECT EXISTING STORMWATER/IRRIGATION CULVERT. AMEND BACKFILL WITH BENTONITE POND LINER (MIXED AS PER MFG. SPECIFICATIONS) FOR PLACEMENT AROUND CULVERT (2" ALL SIDES OF PIPE OVER EXPOSED LENGTH) DURING BACKFILL OPERATION. INCIDENTAL TO SEWER INSTALLATION PAY ITEM.
- 256 PROTECT IN PLACE FENCE.
- 263 SEWER SERVICE LINE SHALL BE INSTALLED OVER THE EXISTING UTE WATER LINE AT THIS LOCATION.
- 267 ADJUST TELEPHONE LINE TO CLEAR SEWER MAIN DURING CONSTRUCTION. INCIDENTAL TO SEWER INSTALLATION PAY ITEM.



REVISION	DESCRIPTION	DATE	DRAWN BY	DATE
1	AS BUILT PER HIGH DESERT SURVEYING RECORDS	12/01-05	JCS	2006
2				
3				
4				

SCALES:

PLAN: 1" = 20'

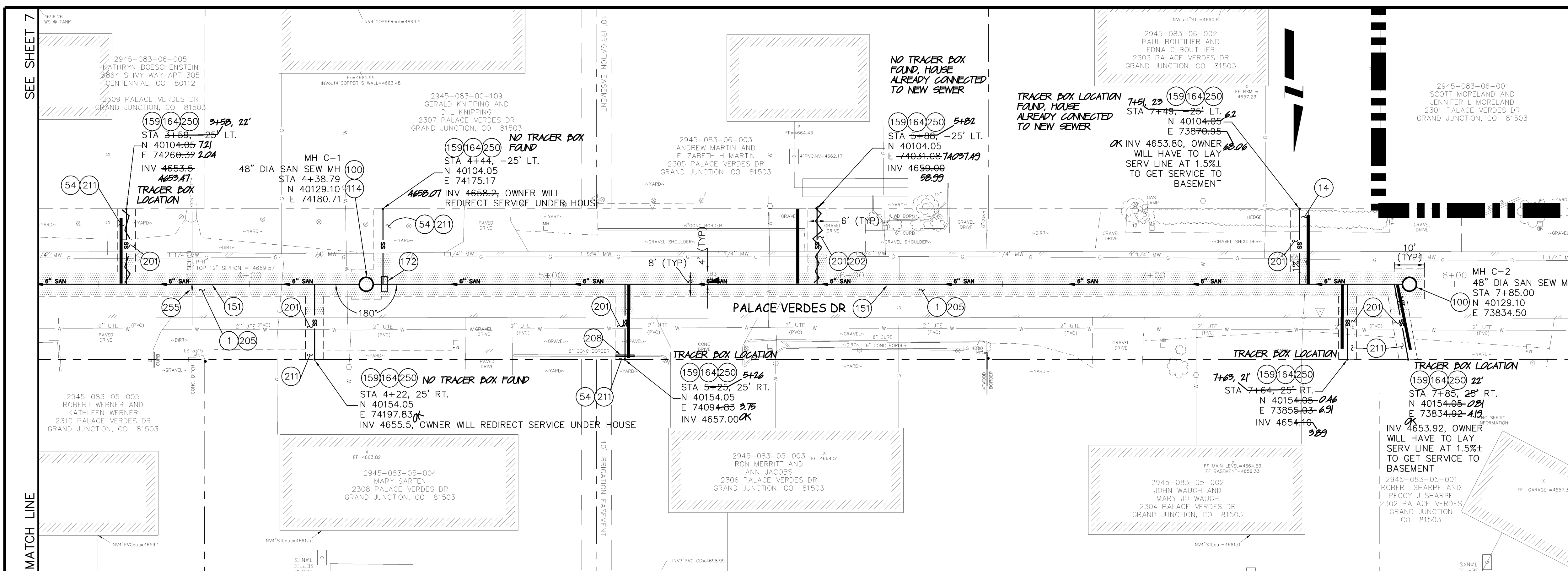
PROFILE: HORIZONTAL 1" = 20', VERTICAL 1" = 5'

CITY OF Grand Junction COLORADO

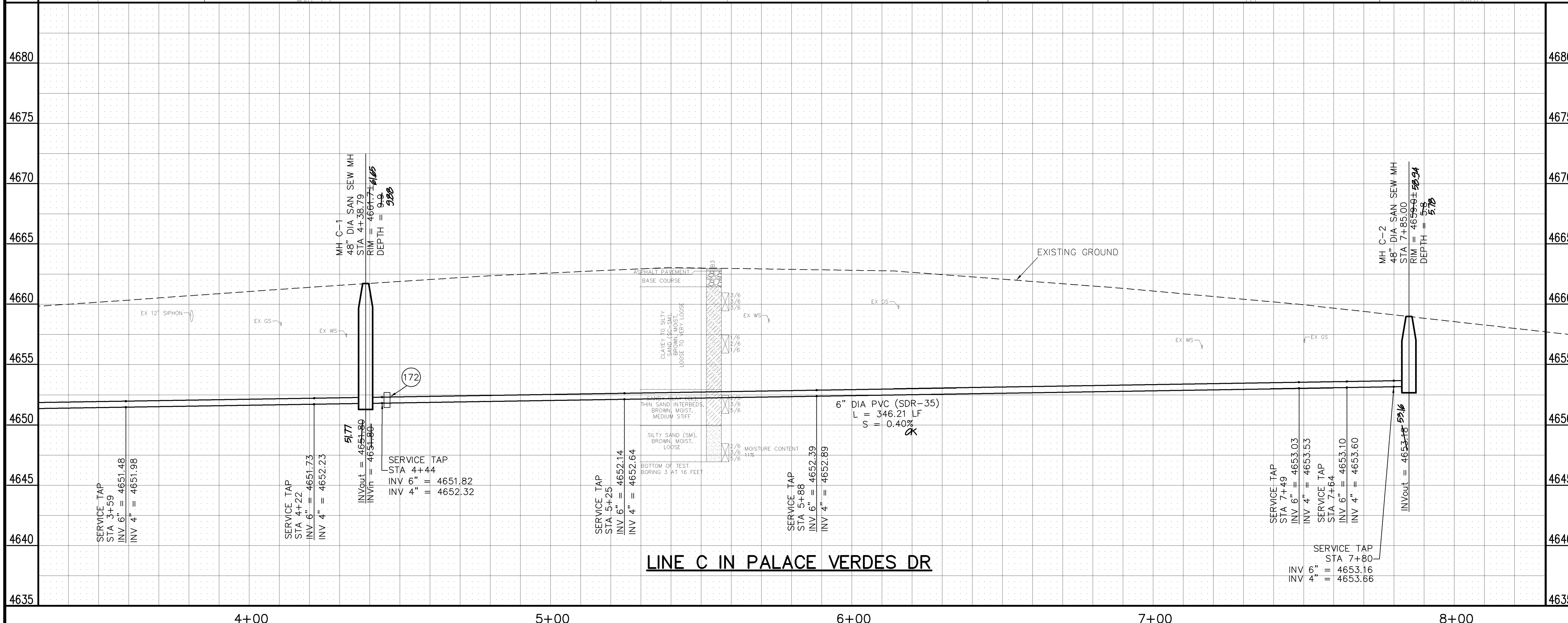
PUBLIC WORKS AND UTILITIES ENGINEERING DIVISION

ARRIBA CT FROM ARRIBA DR TO PALACE VERDES DR & PALACE VERDES DR 330' WEST SANITARY SEWER PLAN AND PROFILE 02111607.TIF

N:\LandProj\F48227 (Palace Verdes STD)\dwg\BASE-F48227.dwg, 7 (ARRIBA CT), 5/29/2007 12:13:03 PM

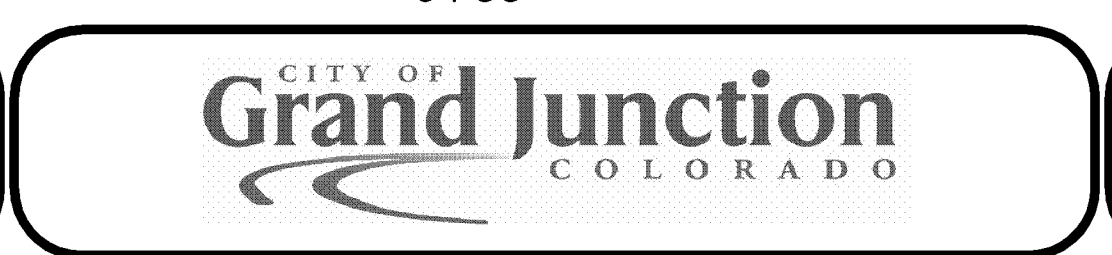


- 1 103.30 - REMOVAL OF ASPHALT MAT (PLANING) FOR TRENCH EXCAVATION: CUT AND REMOVE BY FULL-DEPTH MILL ASPHALT AS SHOWN.
- 14 202.00 - TRIM/REMOVE HEDGE AS NEEDED TO FACILITATE SEWER CONSTRUCTION. COST IS INCIDENTAL TO COST OF SEWER PIPE INSTALLATION.
- 54 210.00 - RESET IRRIGATION SYSTEM COMPONENTS (PER EACH PROPERTY).
- 100 102.11/108.5 - STANDARD 48" DIAMETER SANITARY SEWER MANHOLE: INCLUDES CONNECTION OF ADJACENT SEWER LINE, FORMING INVERTS AND ADJUSTING TO FINAL GRADE. (SEE CITY OF GRAND JUNCTION STANDARD DETAIL SS-02).
- 114 PROVIDE PVC INVERT. (PIPE SHALL BE LAID CONTINUOUSLY THROUGH MANHOLE). COST IS INCIDENTAL TO COST OF MANHOLE INSTALLATION.
- 151 102.90 - 6" GRAVITY SEWER PIPE (SDR-35 PVC). INCLUDES TYPE A BEDDING AND HAUNCHING MATERIAL AND BACKFILL OF TRENCH WITH NATIVE MATERIALS MEETING 103.16 EARTH BACKFILL MATERIAL.
- 159 102/103/104 - 4" SEWER SERVICE TAP, 6" X 4" FULL BODY WYE (SEE STD. DETAIL SS-06).
- 164 102/103/104 - 4" SDR-35 PVC SANITARY SERVICE LINE WITH NATIVE BACKFILL MEETING 103.16 EARTH BACKFILL MATERIAL. INCLUDES SINGLE SERVICE LINE PER TRENCH, TYPE A BEDDING AND HAUNCHING, AND END-OF-SERVICE CAP.
- 172 103.00 - CLAY CUT-OFF WALL (INCIDENTAL TO SEWER INSTALLATION PAY ITEM).
- 201 304.00 - 4" CLASS 6 ABC FOR SHOULDERS AND GRAVEL DRIVEWAYS. COMPACTED TO 90% AASHTO T-180.
- 202 304.00 - WASHED ROCK SURFACE COURSE FOR GRAVEL DRIVEWAYS. MATCH EXISTING TYPE. THICKNESS IS 2" MIN AND 3" MAX.
- 205 103/304/401 - PAVEMENT AND ROAD BASE REPLACEMENT ON SIDE STREETS AND DRIVEWAYS: 3" HOT BITUMINOUS PAVEMENT (GRADING SX, PG 64-22 OIL), OVER 6" CLASS 6 ABC (SEE STD. DETAIL GU-03). PAID PER SY.
- 208 202.00/608.00 - REMOVE AND REPLACE CONCRETE OR ASPHALT CURB AND GUTTER/CURBING/GUTTER/BORDER. SIZE AND STYLE VARY. MATCH EXISTING.
- 211 212 - SOD.
- 250 CONTRACTOR IS RESPONSIBLE FOR REPAIR COSTS ASSOCIATED WITH ANY/ALL DAMAGE TO PRIVATE PROPERTY BEHIND ROW LINE OR EASEMENT LIMITS.
- 255 SPAN/SUPPORT/PROTECT EXISTING STORMWATER/IRRIGATION CULVERT. AMEND BACKFILL WITH BENTONITE POND LINER (MIXED AS PER MFG. SPECIFICATIONS) FOR PLACEMENT AROUND CULVERT (2" ALL SIDES OF PIPE OVER EXPOSED LENGTH) DURING BACKFILL OPERATION. INCIDENTAL TO SEWER INSTALLATION PAY ITEM.



REVISION	DESCRIPTION	DATE	DRAWN BY	DATE
1	AS BUILT PER HIGH DESERT SURVEYING RECORDS	12/07-08	JCS	2006
2				
3				
4				

SCALE	DATE
PLAN	
PROFILE	



**PUBLIC WORKS AND UTILITIES ENGINEERING DIVISION**

**PALACE VERDES DRIVE FROM 330' WEST TO 830' WEST OF ARRIBA CT INTERSECTION, SANITARY SEWER PLAN AND PROFILES**  
 STA 3+30 TO STA 8+30

N:\LandProj\F48227 (Palace Verdes STD)\dwg\BASE-F48227.dwg, 8 (PALACE VERDES DR), 5/29/2007 12:14:02 PM