

# REDLANDS VILLAGE NORTHWEST S. I. D.: LIMEKILN GULCH & CANYON CREEK ADDITION

VICINITY MAP & GRAPHICAL SHEET INDEX



SHEET INDEX

SHEET #	SHEET DESCRIPTION
1	COVER SHEET
2	<del>QUANTITIES SUMMARY (FOR CONTRACT DOCUMENTS)</del>
3	<del>PROFILES (FOR CONTRACT DOCUMENTS)</del>
4A	DETAILS (BOLLARD, COFFER DAM, FORCE MAIN CLEANOUT VAULT, SEDIMENT TRAP & WATERWAY CROSSING)
4B & 4C	NEW REDLANDS LIFT STATION
5	CANYON CREEK ROADWAY PLAN & PROFILES
8	CANYON CREEK STORM SEWER
9 & 10	CANYON CREEK SANITARY SEWER

GENERAL NOTES

- G01 UNLESS NOTED OTHERWISE, STANDARD DETAILS AND SPECIFICATIONS AND SPECIAL PROVISIONS APPLY.
- G02 NOTES NUMBERED BETWEEN 20 AND 108 PERTAIN TO WORK GOVERNED BY THE CITY OF GRAND JUNCTION'S STANDARD SPECIFICATIONS, AS MAY BE MODIFIED BY PROJECT CONTRACT DOCUMENTS.
- G03 NOTES NUMBERED BETWEEN 200 AND 699 PERTAIN TO WORK GOVERNED BY CORRESPONDING SECTIONS OF THE CDOT STANDARD SPECIFICATIONS FOR ROAD AND BRIDGE CONSTRUCTION, AS MAY BE MODIFIED BY OWNER STANDARD SPECIFICATIONS AND/OR PROJECT CONTRACT DOCUMENTS.
- G04 NOTES NUMBERED ABOVE 1000 PERTAIN TO MISCELLANEOUS WORK NOT GOVERNED BY STANDARD SPECIFICATIONS.
- G05 NOTE NUMBERS PRECEDED WITH A "G" ARE INFORMATIONAL OR GENERAL IN NATURE AND, AS INCIDENTAL TO THE WORK, ARE NO-PAY ITEMS.
- G06 PROPERTY LINES SHOWN ARE APPROXIMATE ONLY. THEY ARE BASED UPON PLATS AND DEED DESCRIPTIONS, BUT LOTS, SUBDIVISIONS, AND PARCELS DO NOT CLOSE NOR FIT PRECISELY, SO PROPERTIES ARE SHOWN IN SOMEWHAT OF A BEST FIT FASHION.
- G07 THE LOCATION OF UNDERGROUND FACILITIES SHOWN ON THESE PLANS ARE APPROXIMATE ONLY. THE CONTRACTOR SHALL BE RESPONSIBLE FOR LOCATING ALL UTILITIES IN THE FIELD AS NECESSARY BEFORE PERFORMING ANY WORK WHICH MAY AFFECT THEM.
- G08 SOIL BORE INFORMATION FOR BORINGS LOCATED ON THESE PLANS AND IDENTIFIED BY "TH-\*" IS PROVIDED IN THE APPENDIX OF THE BID DOCUMENTS.
- G09 ELEVATIONS AND CONTOURS IN R.O.W. ARE BASED UPON SURVEY SHOTS AND ARE FAIRLY ACCURATE. THESE WERE MERGED WITH ADJUSTED 2 FOOT CONTOURS FROM 1970 B.O.R. AERIAL PHOTOGRAPHY TO PROVIDE CONTOURS INSIDE OF LOTS. ALSO, HOUSES ARE SHOWN AS TAKEN FROM 1994 AND 1997 AERIAL PHOTOS AND ARE APPROXIMATE ONLY.

UTILITIES AND AGENCIES

AGENCY	NAME	POSITION	ROLE	MAILING ADDRESS	STREET ADDRESS	CITY, STATE	VOICE-WK	VOICE-HM	FAX	CELL
ARMY CORPS OF ENGINEERS	NICK MEZEI	ENGINEER	WETLANDS	402 ROOD AVE., RM 142	402 ROOD AVE., RM 142	GRAND JCT., CO 81501	(970) 243-1199		(970) 241-2358	
COLORADO DIV. OF WILDLIFE	SHAUN DEENEY	DIV. OF WILDLIFE MGR.	SEDIMENT TRAP	711 INDEPENDENT AVE	711 INDEPENDENT AVE	GRAND JCT., CO 81505	(970) 255-6176			
GRAND JUNCTION, CITY OF	BRET GUILLORY	PROJECT ENGINEER	PROJECT ENGINEER	250 N. 5th STREET	250 N. 5th STREET	GRAND JCT., CO 81501	(970) 256-4023		(970) 256-4022	
TCI/ATT	GLENN VANCIL		CABLE TV	2502 FORESIGHT CIRCLE	2502 FORESIGHT CIRCLE	GRAND JCT., CO 81504	(970) 245-8750		(970) 245-6803	
U.S. WEST/QWEST	DAN WISEMAN	ENGINEER	TELEPHONE	2524 BLICKMAN ROAD	2524 BLICKMAN ROAD	GRAND JCT., CO 81504	(970) 244-4311		(970) 240-4349	
UTE WATER	ED TOLIN	ENGINEER	WATER	PO BOX 460		GRAND JCT., CO 81502	(970) 242-7491		(970) 242-9189	
XCEL	HAROLD BALL	PLANNER	GAS, ELECTRIC	2538 BLICKMAN ROAD	2538 BLICKMAN ROAD	GRAND JCT., CO 81504	(970) 244-2626		(970) 244-2661	

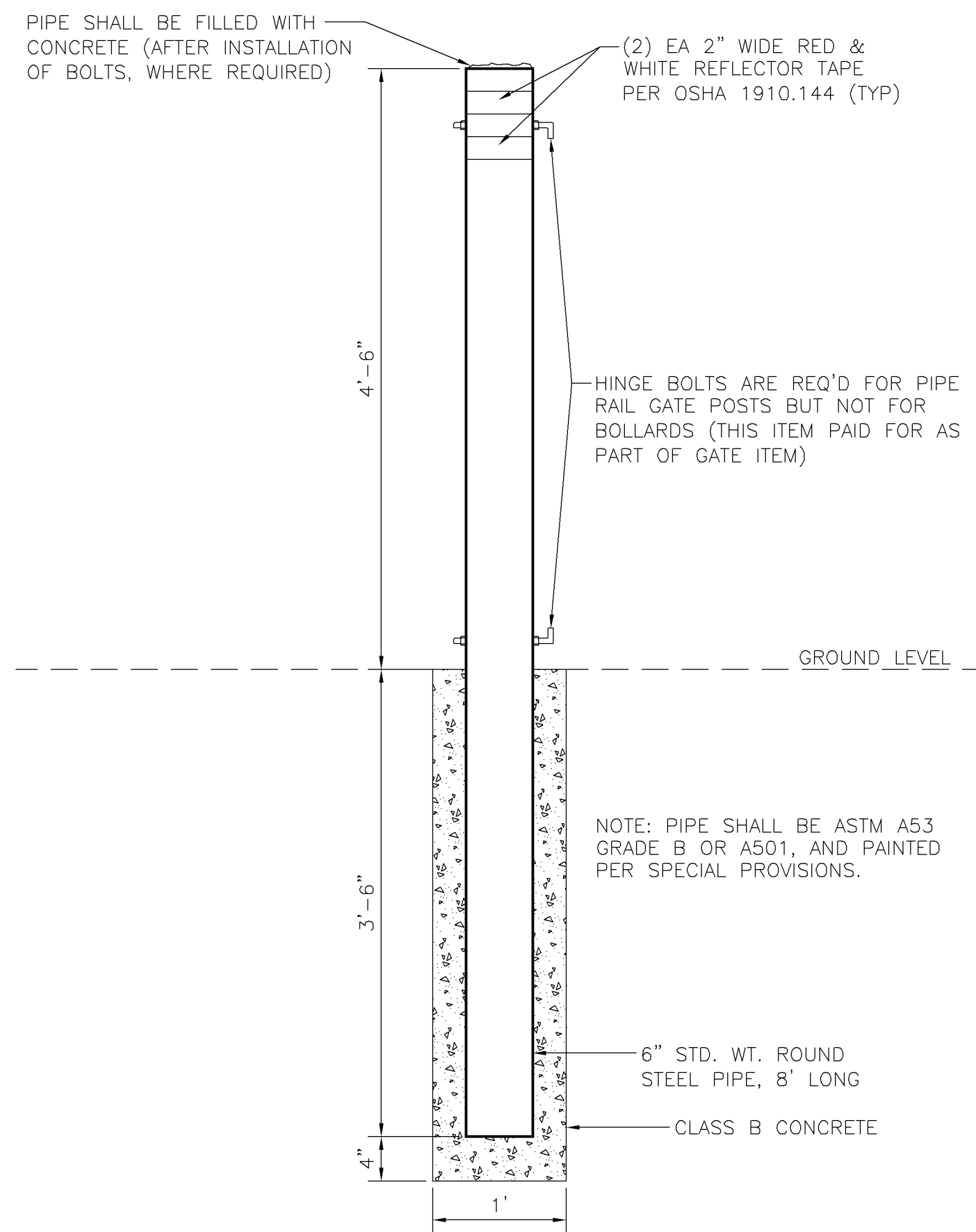
APPROVALS

AGENCY	SIGNATURE	DATE

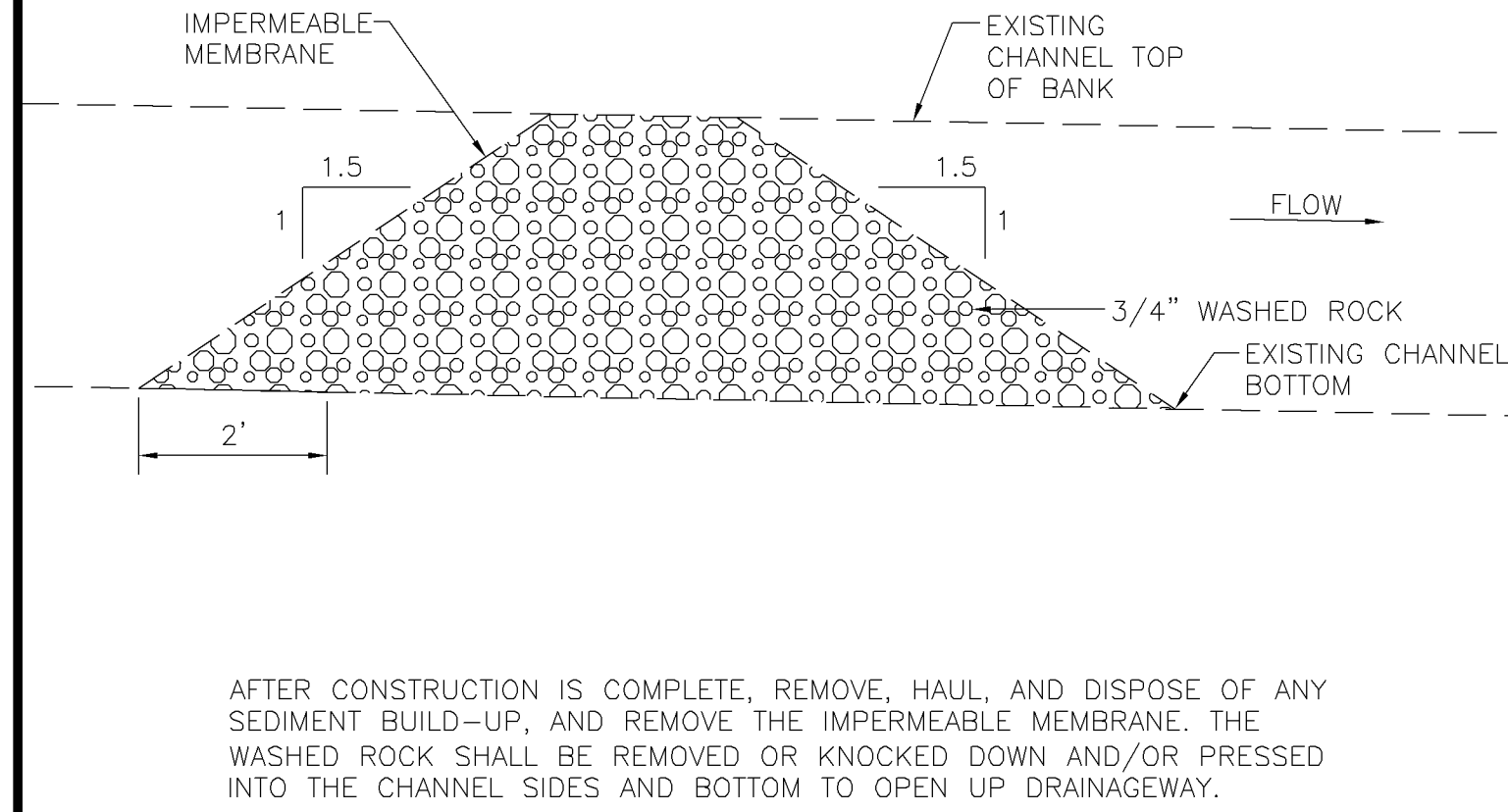
PREPARED BY

GR WILLIAMS ENGINEERING, INC  
1231 19 Road  
Fruita, CO 81521-9689  
(970) 858-1014 Phone  
(970) 858-1007 FAX

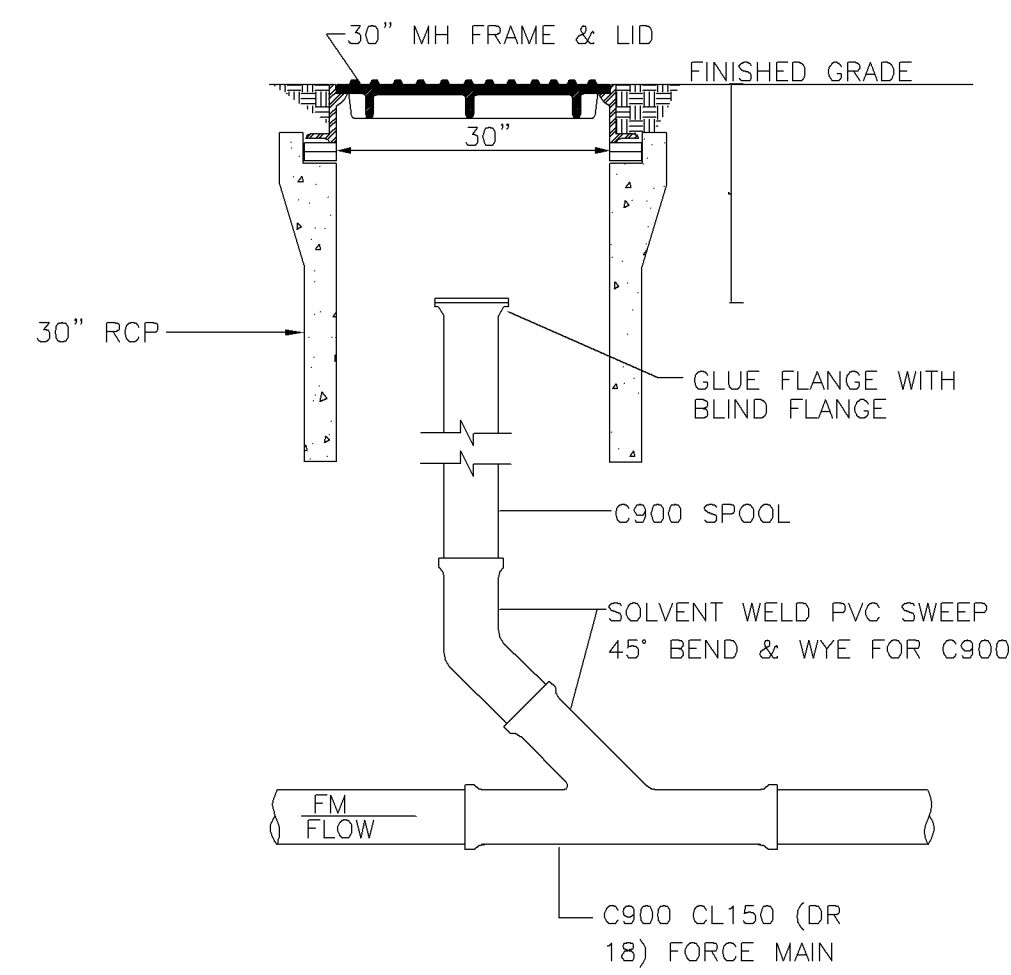
BOLLARD & 14' PIPE RAIL GATE POST (1105.4)



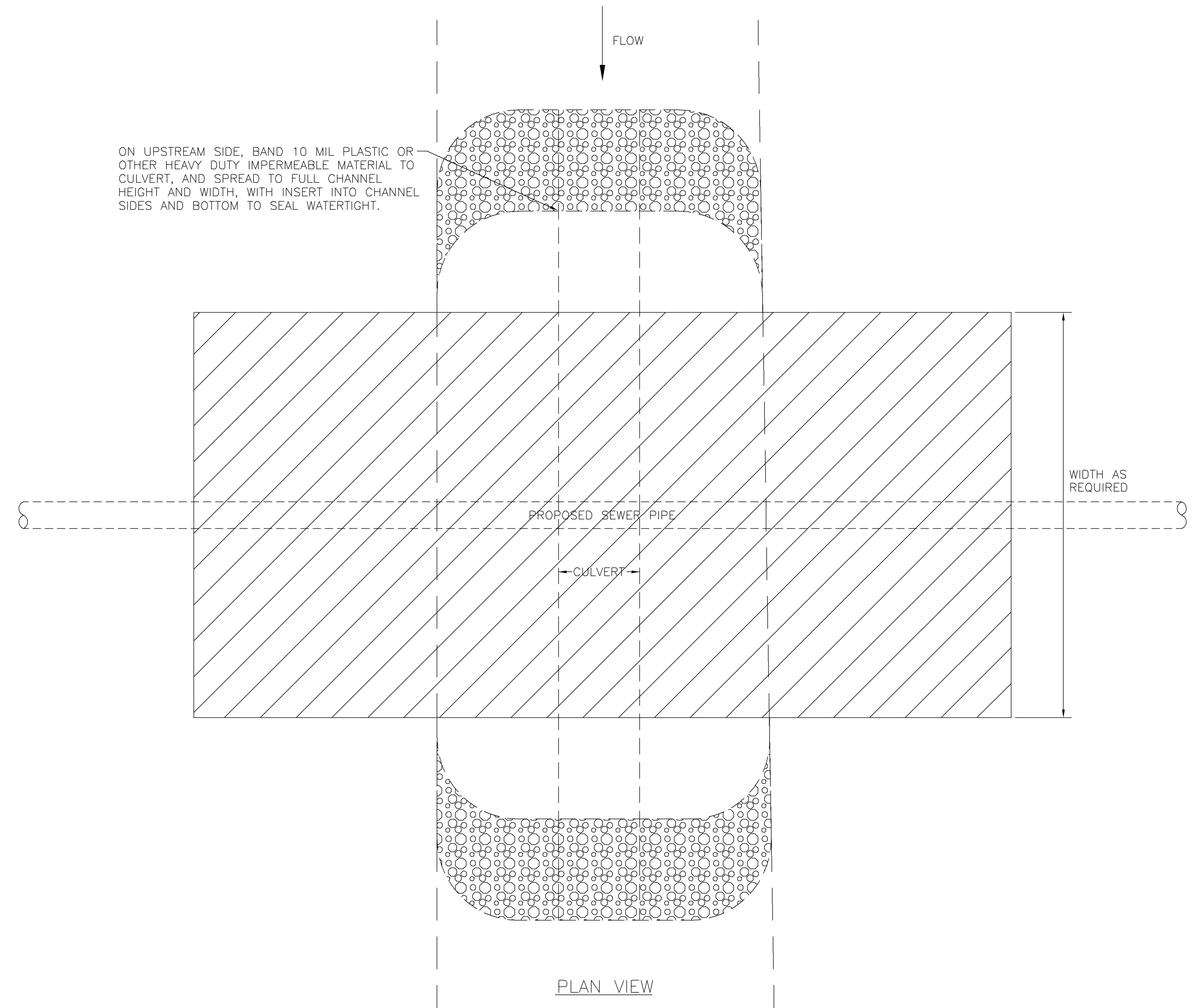
COFFER DAM (208.30)



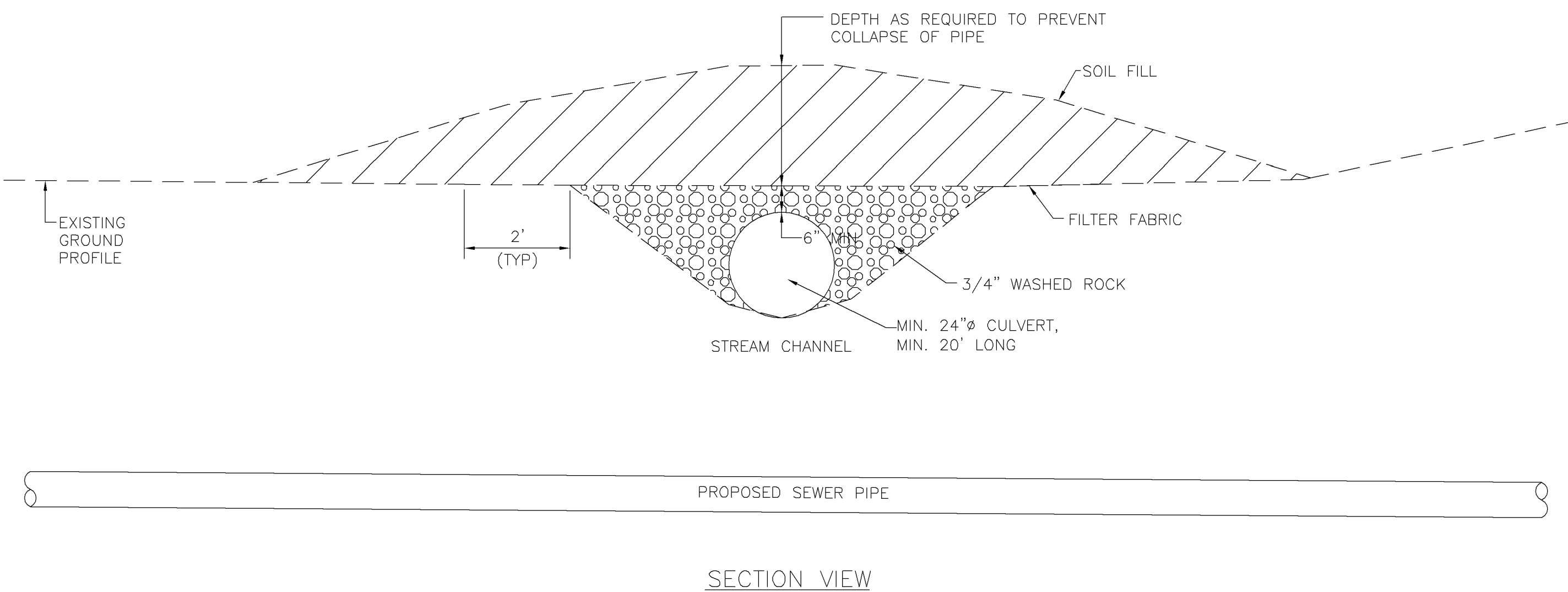
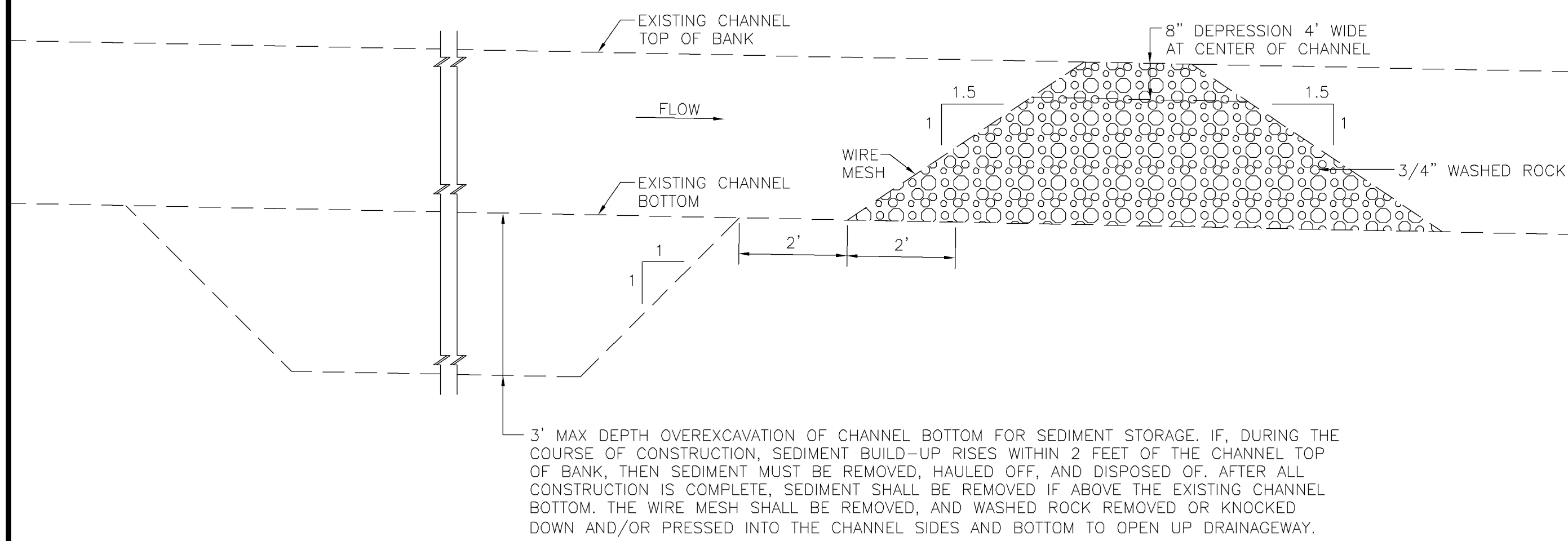
FORCE MAIN CLEANOUT & MH VAULT (25.3)



WATERWAY CROSSING (208.29)



TEMPORARY SEDIMENT TRAP (208.15)



REVISION	DESCRIPTION	DATE	SCALE	PLAN	DETAILS	SECTIONS
REVISION A			HORIZONTAL		NTS	
REVISION B			VERTICAL			

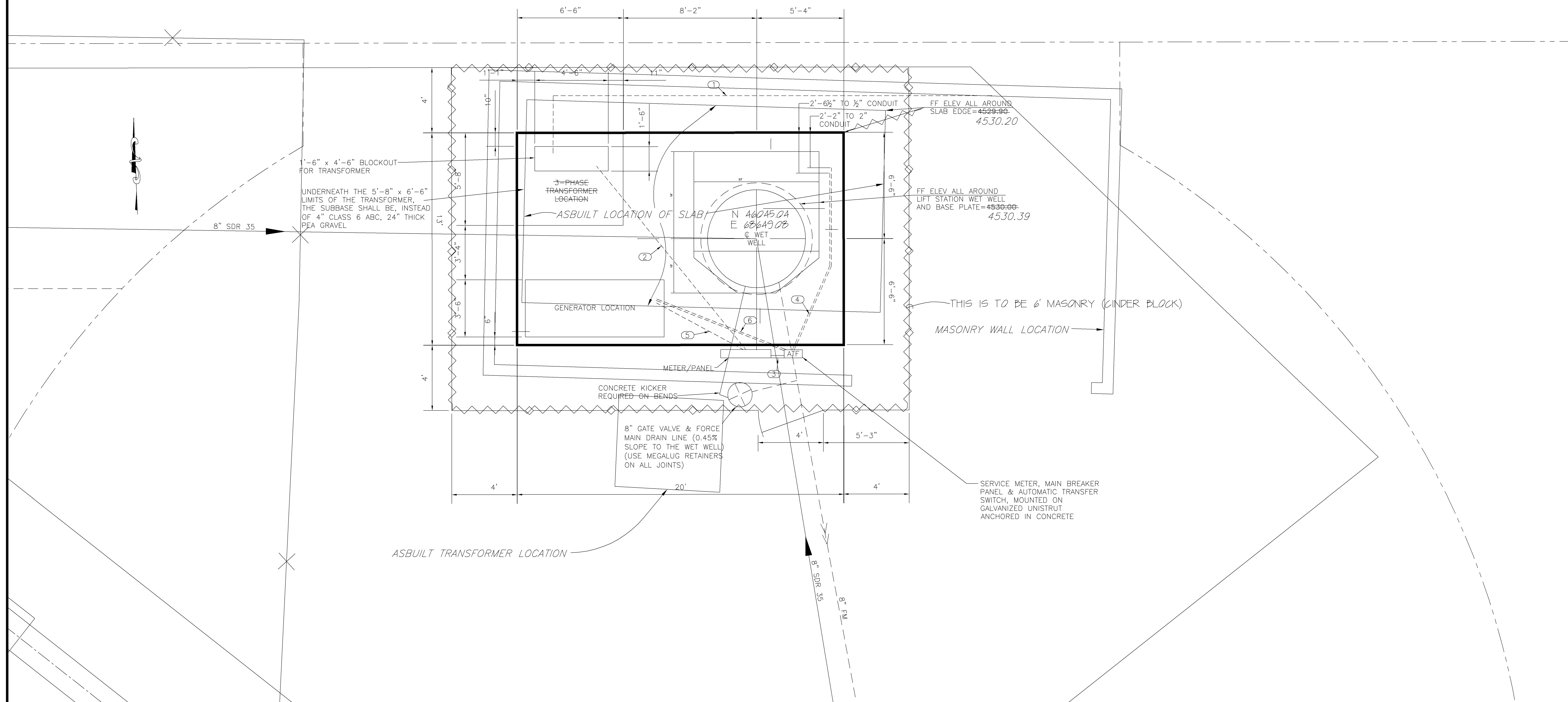
GR WILLIAMS ENGINEERING, INC  
 1231 19 ROAD, FRUITA, COLORADO 81521-9689  
 (970) 858-1014 PHONE (970) 858-1007 FAX

REDLANDS VILLAGE NORTHWEST S.I.D.  
 MISCELLANEOUS DETAILS: Bollard, Coffe  
 Dam, Sediment Trap, & Waterway X'ing

RVNLS-4A  
 FILENAME  
 RVNLS-04A.DWG

**ELECTRICAL CONDUITS**

1. XCEL INSTALLED 4" CONDUIT & PRIMARY LINES TO THE TRANSFORMER (U.G.)
2. CONTRACTOR INSTALLED CONDUIT FROM THE TRANSFORMER TO METER, CONTRACTOR TO DETERMINE REQUIRED SIZE (U.G.)
3. CONTRACTOR INSTALLED CONDUIT FROM BREAKER TO AUTOMATIC TRANSFER SWITCH, CONTRACTOR TO DETERMINE REQUIRED SIZE (AERIAL, ON BOARD)
4. CONTRACTOR INSTALLED 2" SERVICE AND 1/2" AUX. CONDUITS FROM ATF TO THE LIFT STATION (U.G.)
5. CONTRACTOR INSTALLED 1" CONDUIT FROM BREAKER TO GENERATOR TO RUN ENGINE/COOLANT HEATER (U.G.)
6. TWO CONDUITS SIZED BY ELECTRICIAN FROM ATF TO GENERATOR, ONE FOR GENERATOR CONTROLS, THE OTHER FOR SUPPLY POWER FROM THE GENERATOR (U.G.)



D:\F10223 (LK GULCH LIFT STA REV) \DWG\RVNLS-04B.DWG, Layout1, 5/31/2007 2:04:47 PM

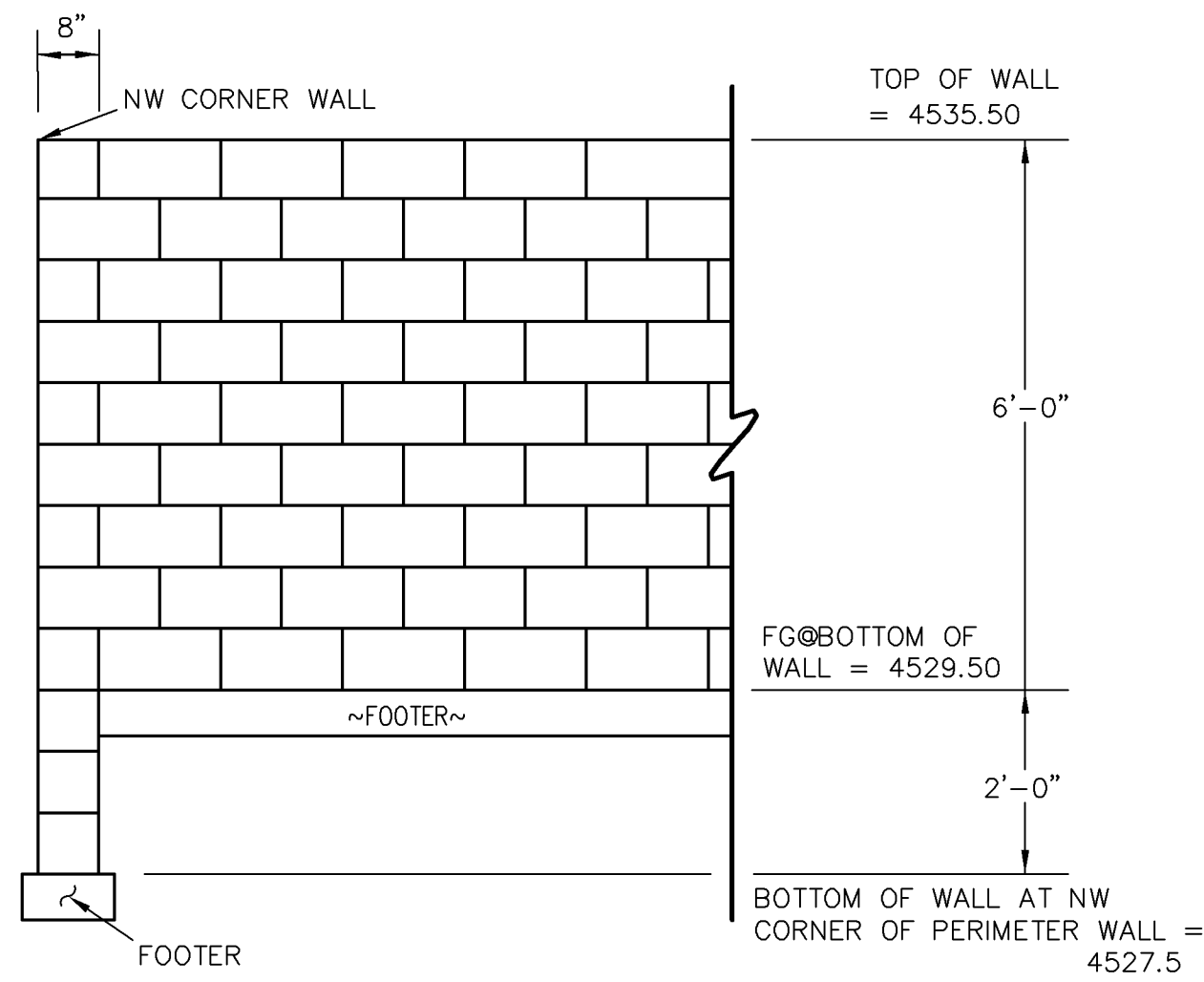
DESCRIPTION	DATE
REVISION A LIFT STA MOVED BY CITY	10-16-02
REVISION B ASBUILT	JUNE 2003
REVISION C	

SCALE	PLAN	PROFILE	SECTIONS
HORIZONTAL	0 1.5 3 6		0 5 10 20
VERTICAL			0 2.5 5

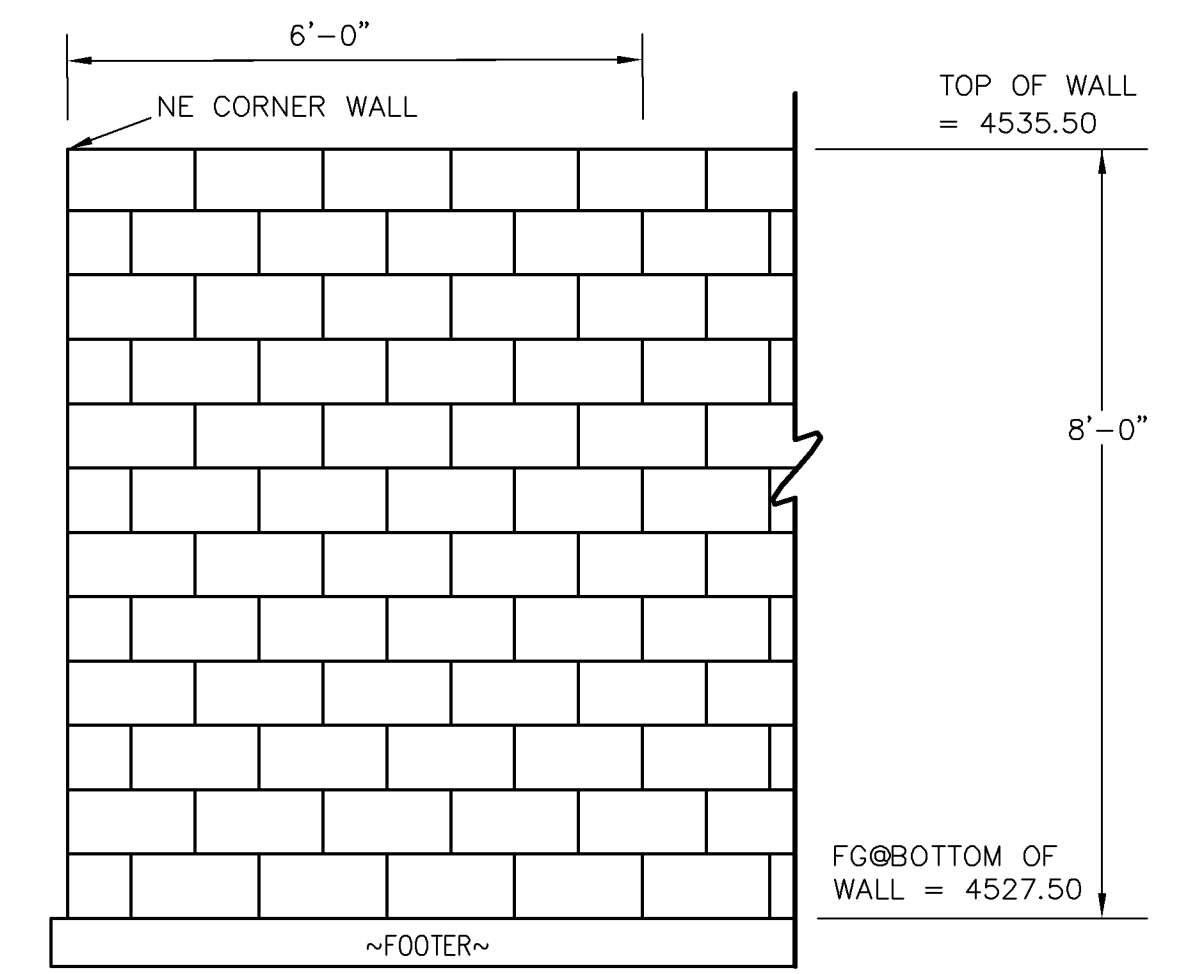
**GR WILLIAMS ENGINEERING, INC.**  
 1231 19 ROAD, FRUITA, COLORADO 81521-9689  
 (970) 858-1014 PHONE (970) 858-1007 FAX

**REDLANDS VILLAGE NORTHWEST S.I.D.**  
**REDLANDS VILLAGE LIFT STATION**  
 Lift Station Site Plan

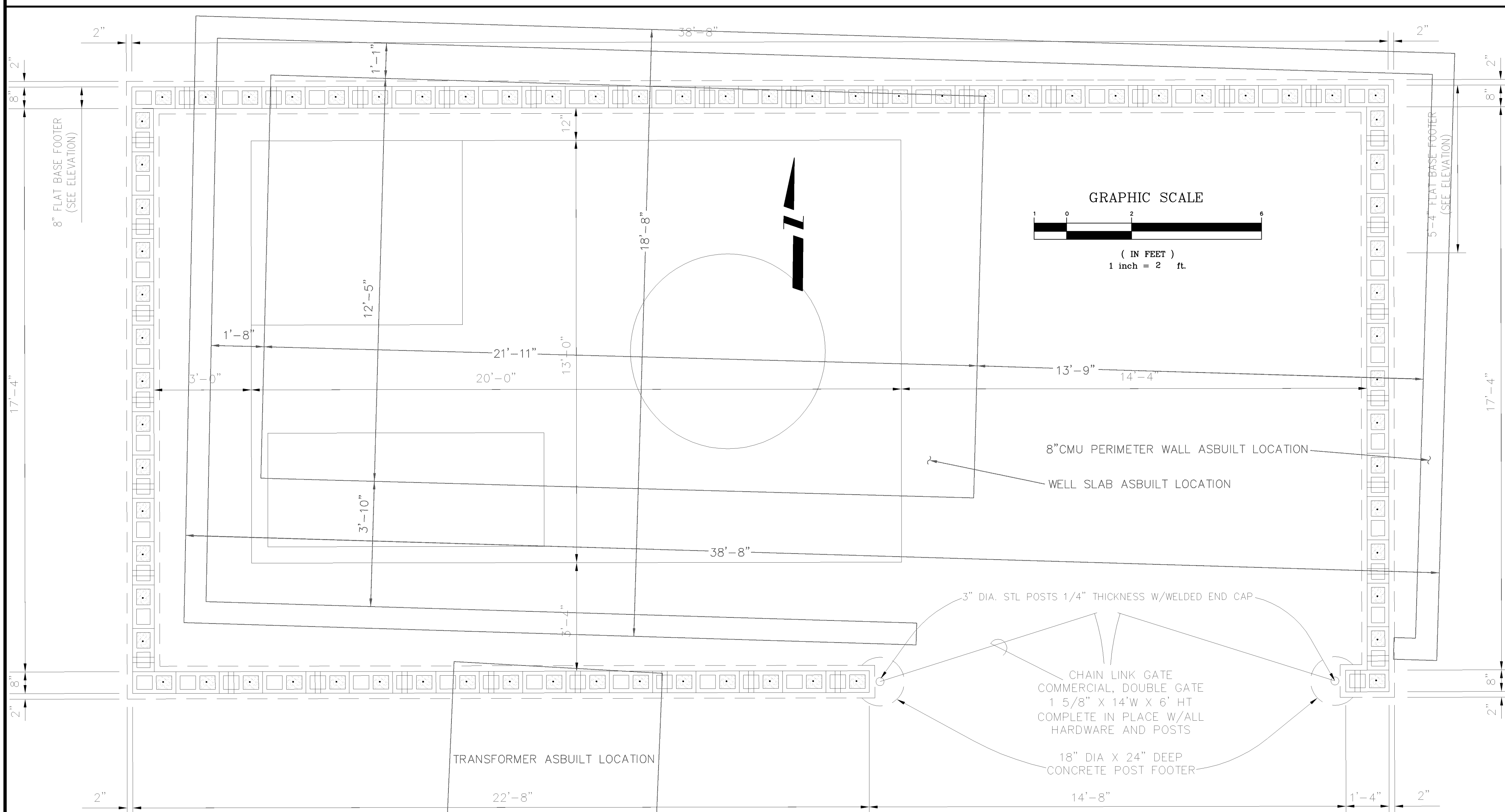
RVNLS-4B  
 FILENAME  
 RVNLS-04B.DWG



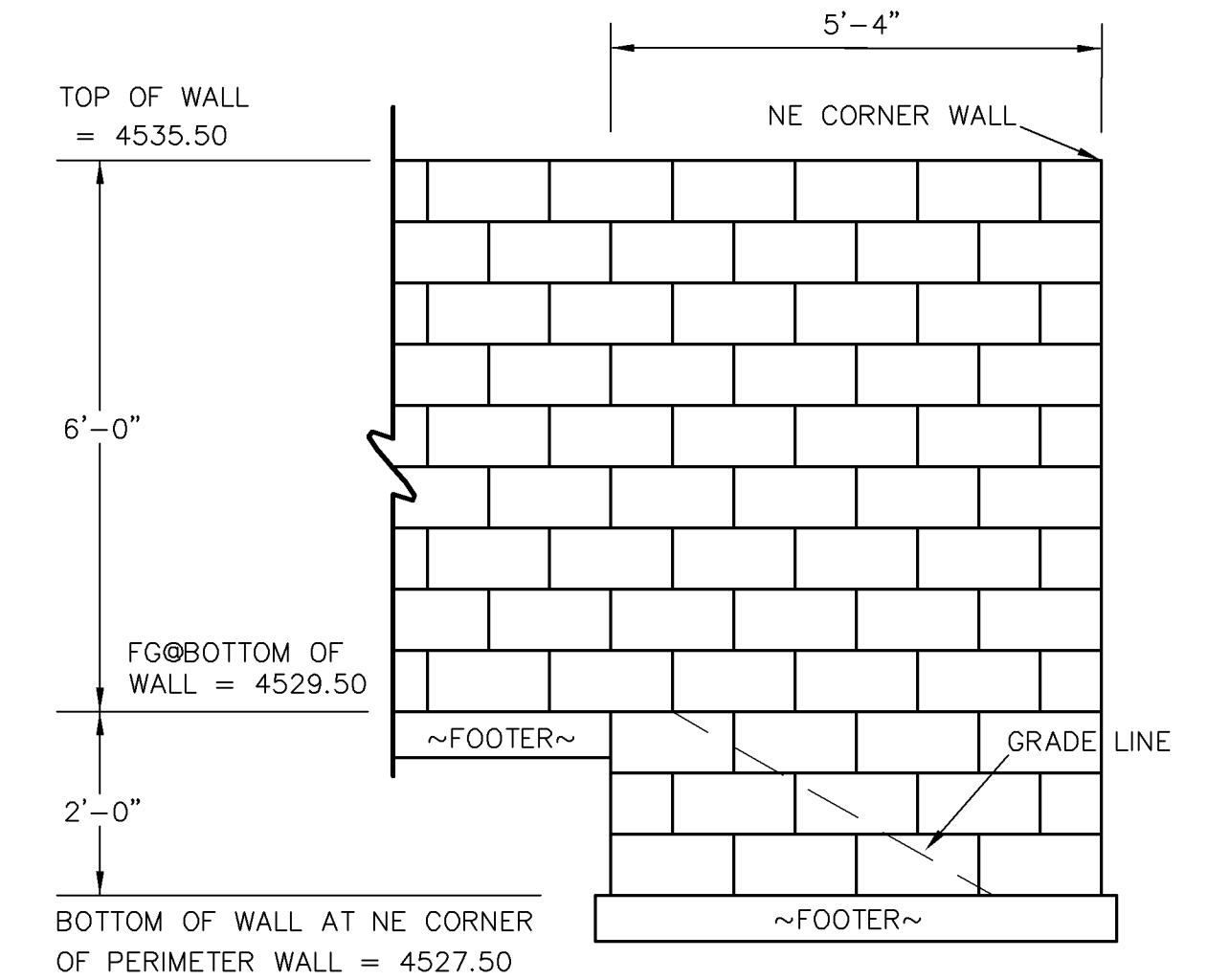
**ELEVATION OF WEST WALL  
LOOKING EAST**



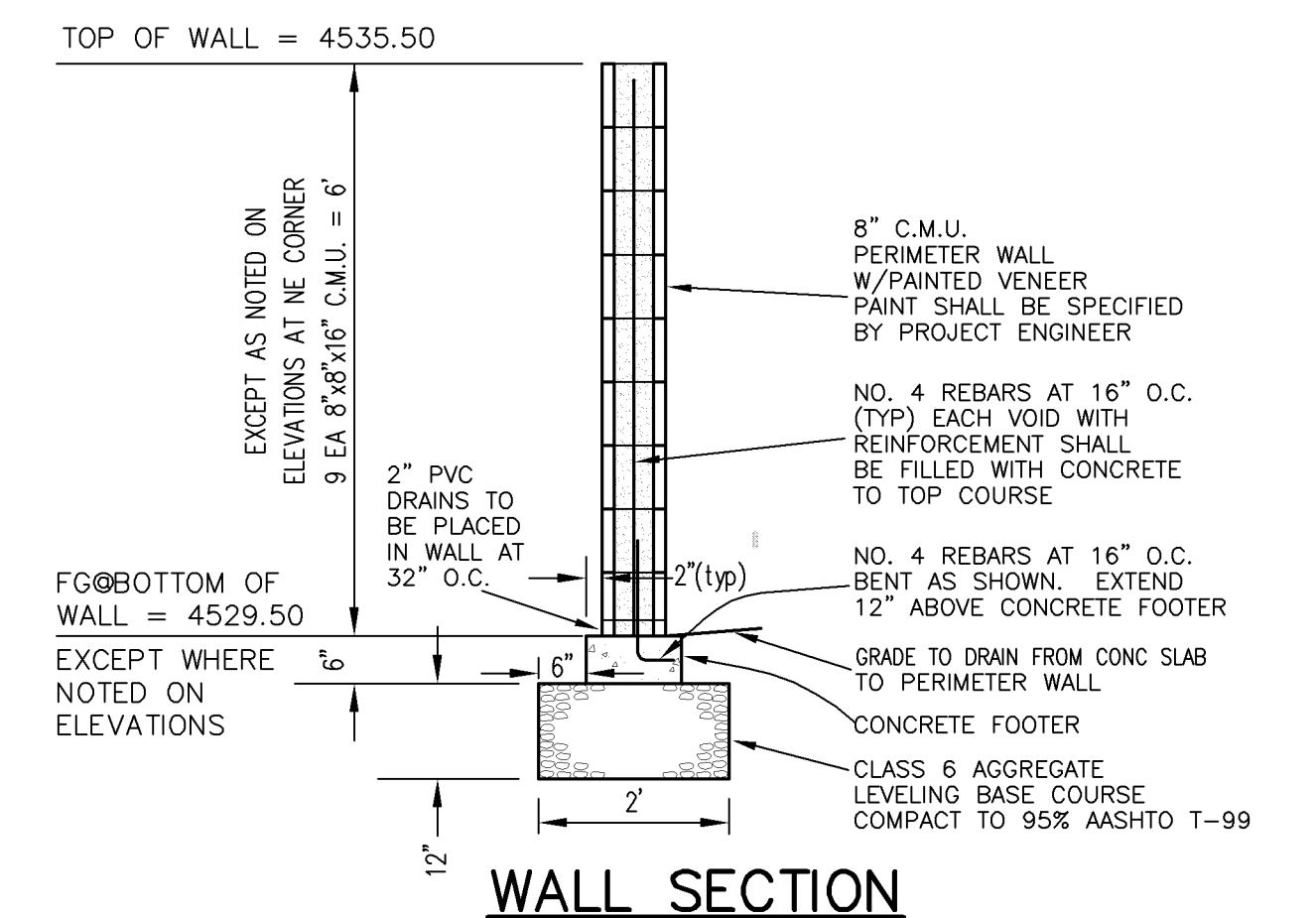
**ELEVATION OF NORTH WALL  
LOOKING SOUTH**



**WALL PLAN VIEW**



**ELEVATION OF EAST WALL  
LOOKING WEST**



**WALL SECTION**

REVISION	DESCRIPTION	DATE	DRAWN BY	DATE
REVISION A	ASBUILT	JUNE, 2003	JCS	2003
REVISION B			JCS	2003
REVISION C			SBG	2003
REVISION D				

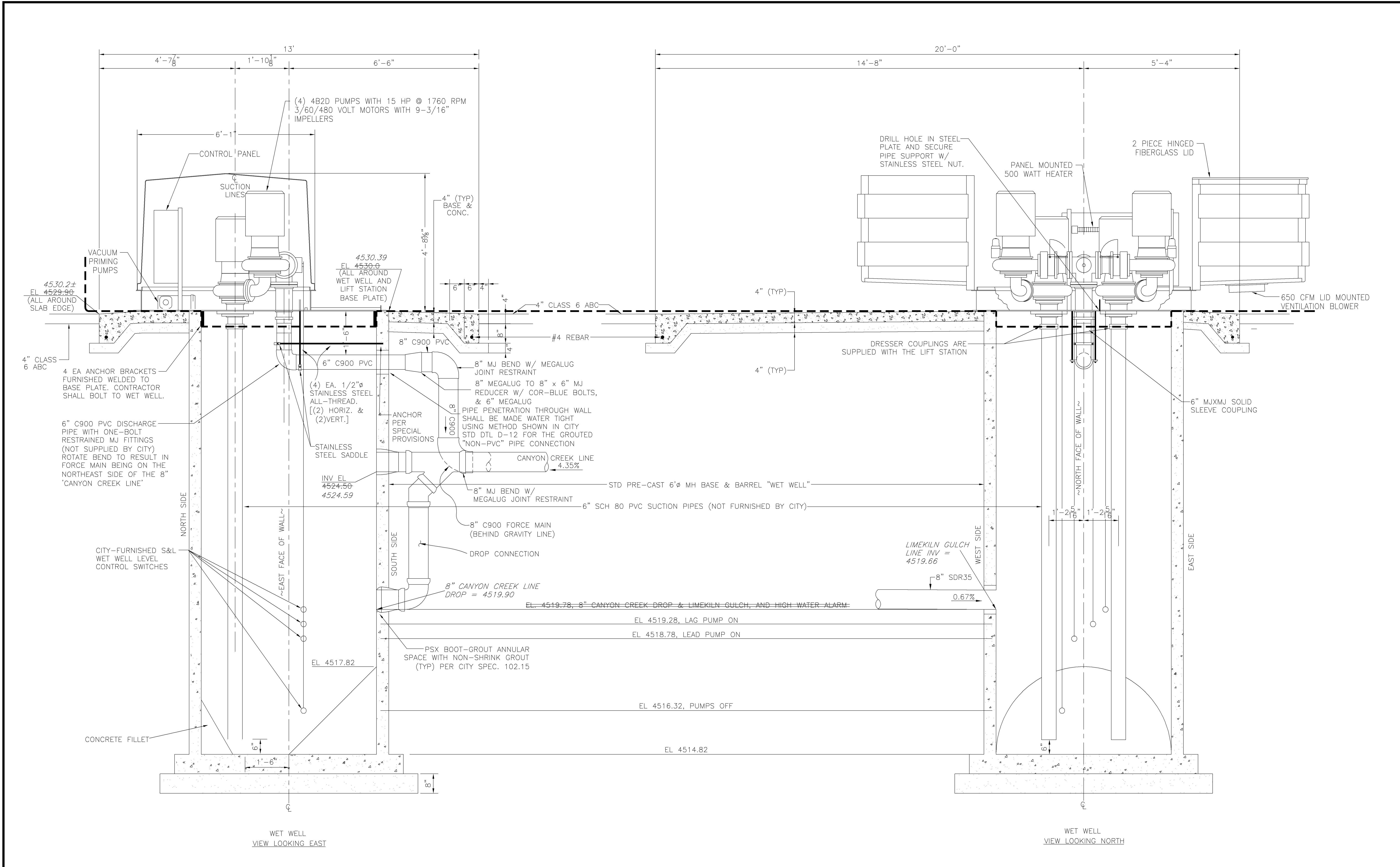
SCALE
PLAN HORIZ. 1"=2'

**DEPARTMENT OF PUBLIC WORKS AND UTILITIES  
ENGINEERING AND TECHNICAL SERVICES DIVISIONS  
CITY OF GRAND JUNCTION, COLORADO**

**REDLANDS VILLAGE NORTHWEST S.I.D.  
LIFT STATION PERIMETER WALL PLAN**

D:\F10223 (LK GULCH LIFT STA REV)DWG\RW\NLS-5A.DWG, wall, 5/31/2007 2:14:35 PM

D:\F0223 (LK GULCH LIFT STA REV) \RVNLS-04C.DWG, Layout1, 5/31/2007 2:06:40 PM



REVISION	DESCRIPTION	DATE
1	LIFT STA MOVED BY CITY	10-16-02
2	ASBUILT	JUNE 2003

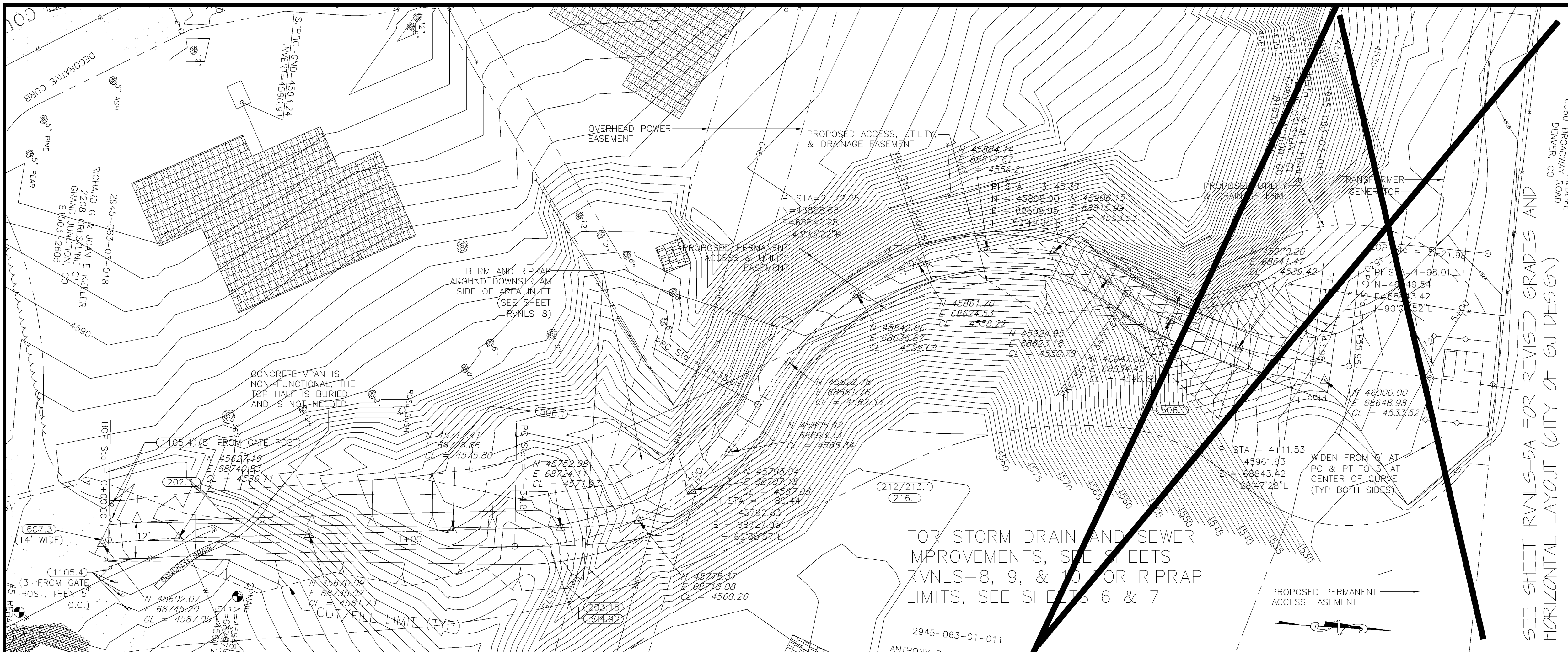
SCALE	PLAN	DETAILS	SECTIONS
HORIZONTAL		NTS	
VERTICAL			

**GR WILLIAMS ENGINEERING, INC**  
 1231 19 ROAD, FRUITA, COLORADO 81521-9689  
 (970) 858-1014 PHONE (970) 858-1007 FAX

**REDLANDS VILLAGE NORTHWEST S.I.D.**  
**REDLANDS VILLAGE LIFT STATION**  
 Section Views

RVNLS-4C
FILENAME
RVNLS-04C.DWG

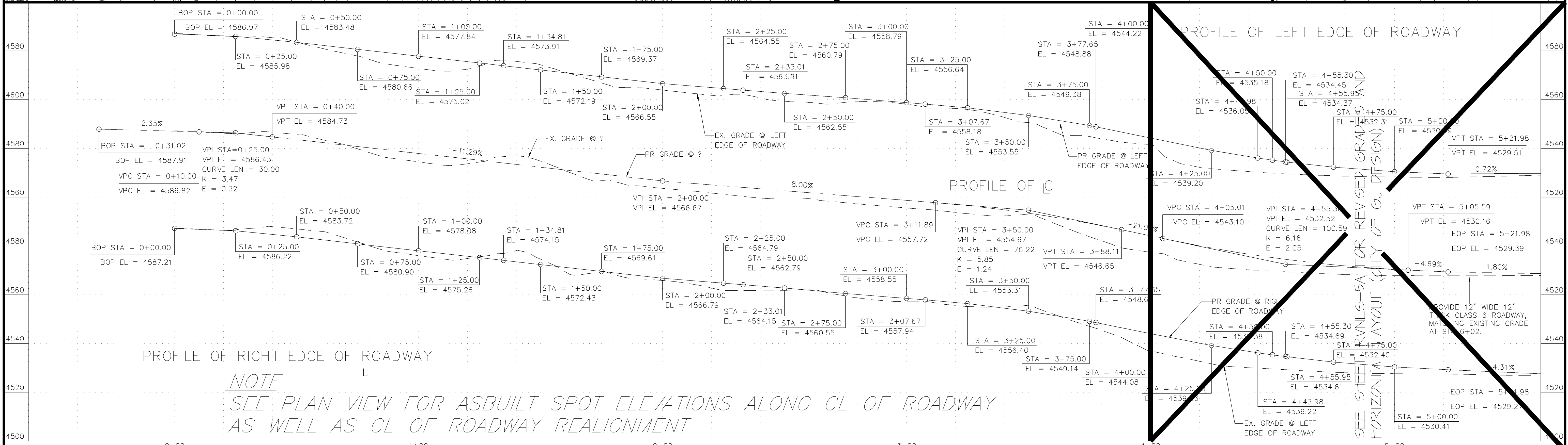
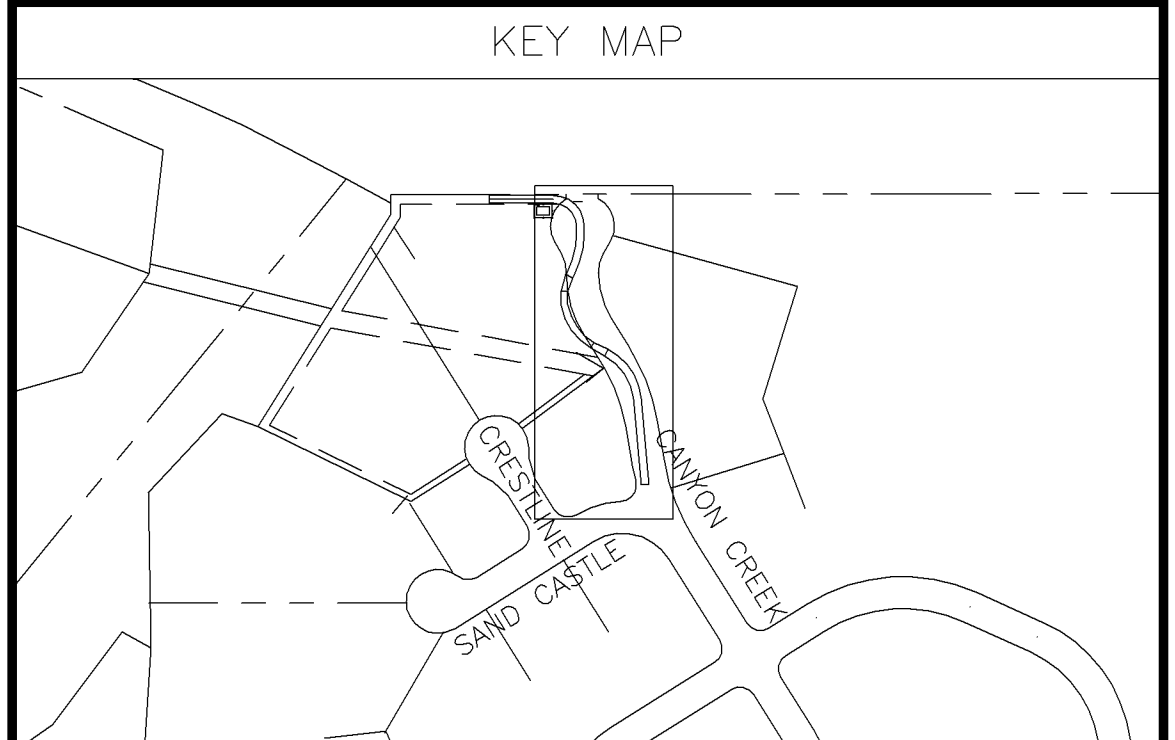




SHADING AND TEXTURE LEGEND

FACILITY OR SURFACE TREATMENT	EXISTING	PROPOSED	REMOVE & REPLACE
AGGREGATE GRAVEL (CLASS 6)			
AGGREGATE ROADWAY			
BUILDING			
RIPRAP			
WASHED ROCK			

- CONSTRUCTION NOTES
- 202.31 REMOVE CONCRETE DRAIN PAN.
  - 203.15 EXCAVATE AND/OR BACKFILL AS REQUIRED FOR PROPOSED IMPROVEMENTS.
  - 212/213.1 SEED AND MULCH PER SPECIAL PROVISIONS ALL SURFACE AREAS DISTURBED BY CONSTRUCTION THAT WILL NOT BE HARD SURFACED OR GRAVELED.
  - 216.1 EROSION CONTROL COVERINGS REQUIRED FOR ALL DISTURBED AREAS OF THE HILLSIDE AS NOTED.
  - 304.92 CONSTRUCT AGGREGATE ROADWAY.
  - 506.1 CONSTRUCT LOOSE RIPRAP LINER PER DETAILS AND/OR SPECIAL PROVISIONS.
  - 607.3 CONSTRUCT GATE PER SPECIAL PROVISIONS AND/OR DETAILS.
  - 1105.4 CONSTRUCT BOLLARD OR GATE POST PER DETAIL.



REVISION	DATE
REVISION A REV ROAD STA 4+00 ON BY CITY - 10-16-02	
REVISION B ASBUILT	MAY 2003
REVISION C	

DESCRIPTION	SCALE	PLAN	PROFILE	SECTIONS
HORIZONTAL	0 10 20 40			
VERTICAL	0 10 20 40			

GR WILLIAMS ENGINEERING, INC.  
 1231 19 ROAD, FRUITA, COLORADO 81521-9689  
 (970) 858-1014 PHONE (970) 858-1007 FAX

REDLANDS VILLAGE NORTHWEST S.I.D.  
 CANYON CREEK ROADWAY  
 Plan & Profile

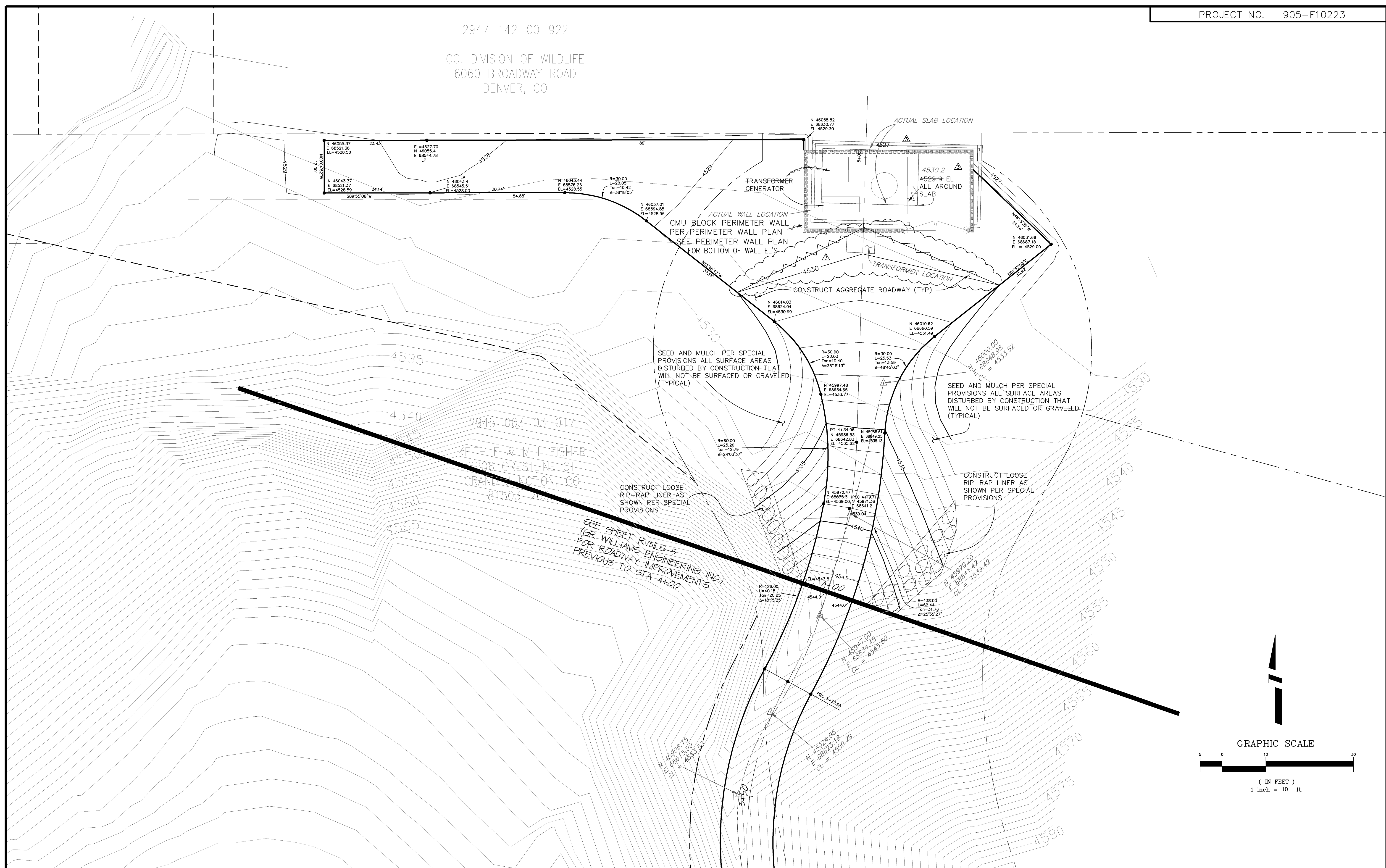
RVNLS-5  
 FILENAME  
 RCP01001.DWG

D:\P0223 (LK GULCH LIFT STA REV) \DWG\RCP01001.DWG, Layout1, 5/31/2007 2:12:34 PM



2947-142-00-922

CO. DIVISION OF WILDLIFE  
6060 BROADWAY ROAD  
DENVER, CO



N 46055.37  
E 68521.36  
EL=4528.58

23.43

EL=4527.70  
N 46055.4  
E 68544.78  
LP

N 46043.37  
E 68521.37  
EL=4528.59

24.14

589°55'08"W

N 46043.44  
E 68545.51  
EL=4528.00

30.74

54.88

N 46037.01  
E 68594.93  
EL=4528.96

R=30.00  
L=20.05  
Tan=10.42  
Δ=38°18'05"

ACTUAL SLAB LOCATION

4527

4530.2

4529.9 EL  
ALL AROUND  
SLAB

TRANSFORMER  
GENERATOR

TRANSFORMER LOCATION

CONSTRUCT AGGREGATE ROADWAY (TYP)

ACTUAL WALL LOCATION  
CMU BLOCK PERIMETER WALL  
PER PERIMETER WALL PLAN  
SEE PERIMETER WALL PLAN  
FOR BOTTOM OF WALL EL'S

CONSTRUCT LOOSE  
RIP-RAP LINER AS  
SHOWN PER SPECIAL  
PROVISIONS

SEED AND MULCH PER SPECIAL  
PROVISIONS ALL SURFACE AREAS  
DISTURBED BY CONSTRUCTION THAT  
WILL NOT BE SURFACED OR GRAVELED  
(TYPICAL)

SEED AND MULCH PER SPECIAL  
PROVISIONS ALL SURFACE AREAS  
DISTURBED BY CONSTRUCTION THAT  
WILL NOT BE SURFACED OR GRAVELED  
(TYPICAL)

CONSTRUCT LOOSE  
RIP-RAP LINER AS  
SHOWN PER SPECIAL  
PROVISIONS

SEE SHEET RVNLS-5  
(OR WILLIAMS ENGINEERING INC.)  
FOR ROADWAY IMPROVEMENTS  
PREVIOUS TO STA 4+00

2945-063-03-017

KEITH E & M L FISHER  
2206 CRESTLINE CT  
GRAND JUNCTION, CO  
81503-2055

N 46014.03  
E 68624.04  
EL=4530.99

N 46010.62  
E 68660.59  
EL=4531.49

N 46000.00  
E 68646.98  
EL=4533.52

R=30.00  
L=20.03  
Tan=10.40  
Δ=38°15'13"

R=30.00  
L=25.53  
Tan=13.59  
Δ=48°45'03"

N 45997.48  
E 68634.85  
EL=4533.77

PT 4+34.96  
N 45986.53  
E 68642.83  
EL=4535.62

N 45988.61  
E 68649.25  
EL=4535.15

N 45972.47  
E 68635.3  
EL=4538.00

PC2 4+19.71  
N 45971.38  
E 68641.2  
EL=4539.04

N 45970.20  
E 68641.47  
EL=4539.42

R=126.00  
L=40.15  
Tan=20.25  
Δ=18°15'25"

EL=4543.8

4543

4544.01

4544.07

R=138.00  
L=62.44  
Tan=31.76  
Δ=25°55'27"

N 45947.00  
E 68634.45  
EL=4545.60

CL = 4545.60

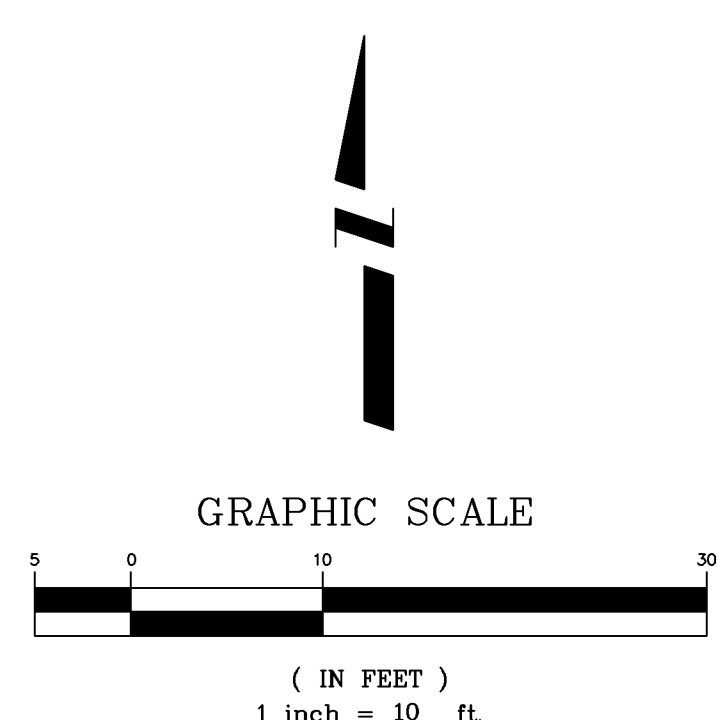
PRC 3+77.65

N 45924.95  
E 68621.18  
EL=4550.79

CL = 4550.79

N 45906.15  
E 68615.98  
EL=4553.53

CL = 4553.53



REVISION	DESCRIPTION	DATE	DRAWN BY	DATE	SCALE
REVISION A	REV'D ROAD FROM STA 4+00 ON BY CITY	10-16-02	JCS	2002	PLAN
REVISION B	REV'D NE LEG OF HAMMERHEAD TURNAROUND	11-20-02	JCS/SBG	2002	PROFILE
REVISION C	REGRADED AROUND LIFT STATION PERIMETER WALL	3-7-03			HORIZ. 1"=10'
REVISION D	ASBUILT	JUNE 2003			VERT.

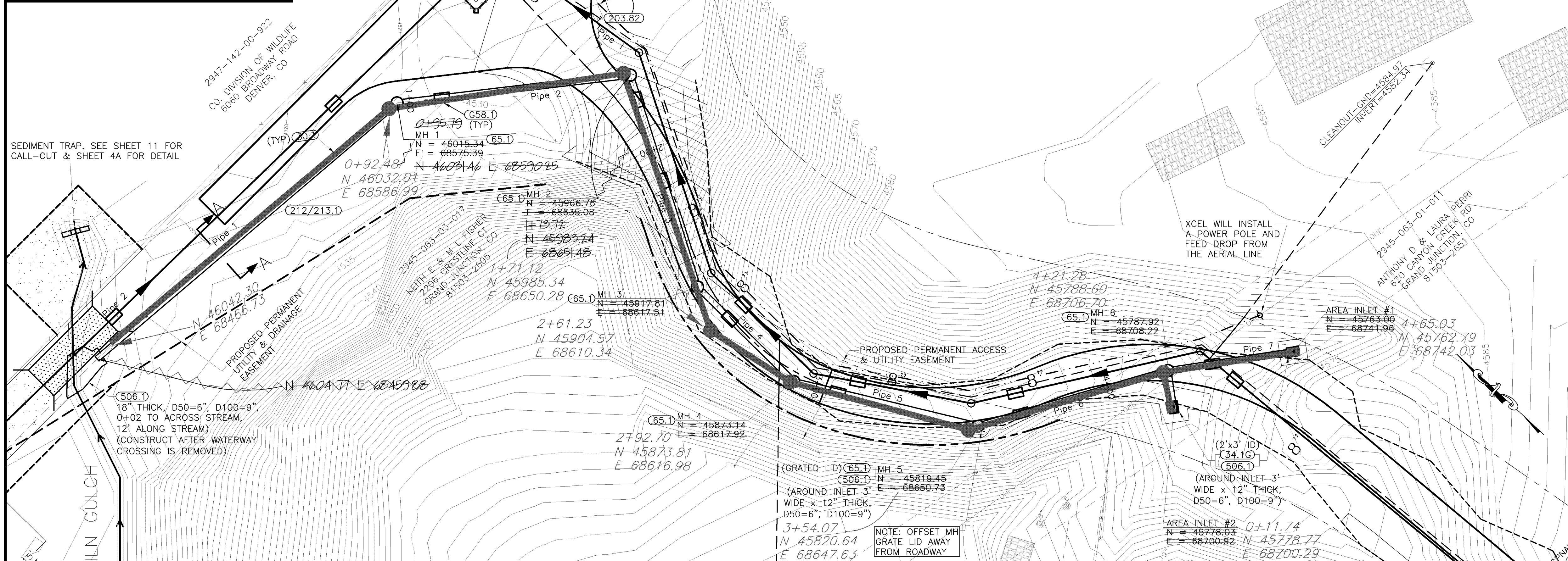
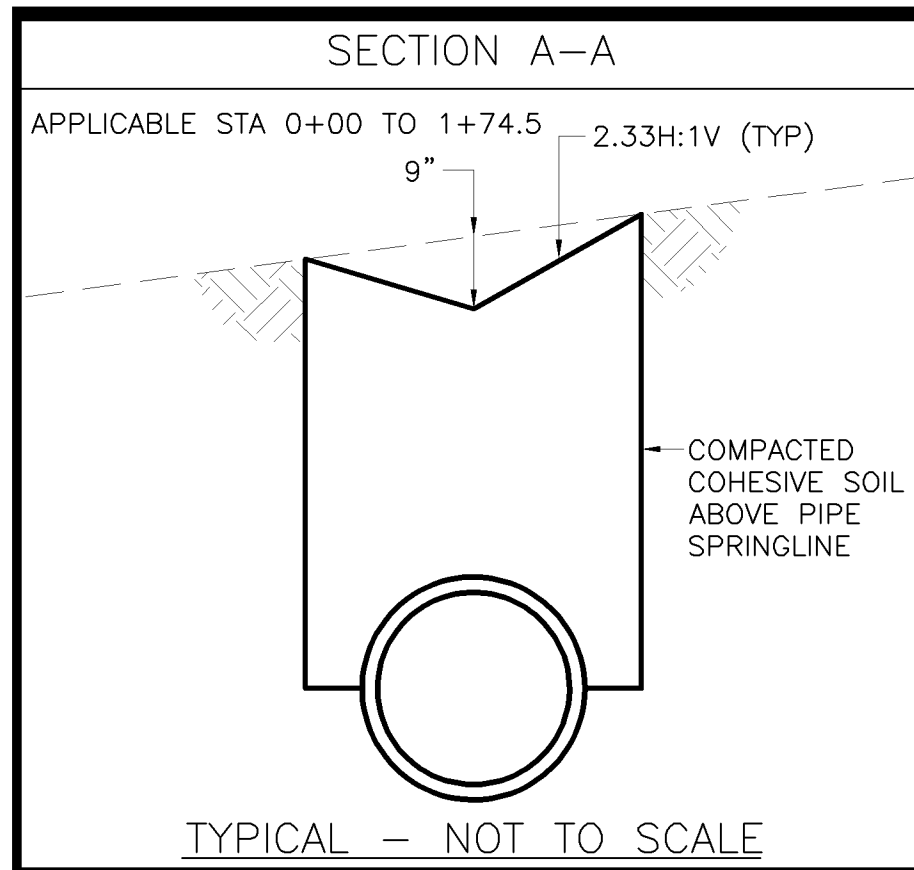
DEPARTMENT OF PUBLIC WORKS AND UTILITIES  
ENGINEERING AND TECHNICAL SERVICES DIVISIONS  
CITY OF GRAND JUNCTION, COLORADO

REDLANDS VILLAGE NORTHWEST S.I.D.  
CANYON CREEK ROADWAY HAMMERHEAD  
10TH SCALE GRADING PLAN

D:\F10223 (LK GULCH LIFT STA REV)\DWG\RVNLS-5A.DWG, PLAN, 5/31/2007 2:49:43 PM

RVNLS-5A

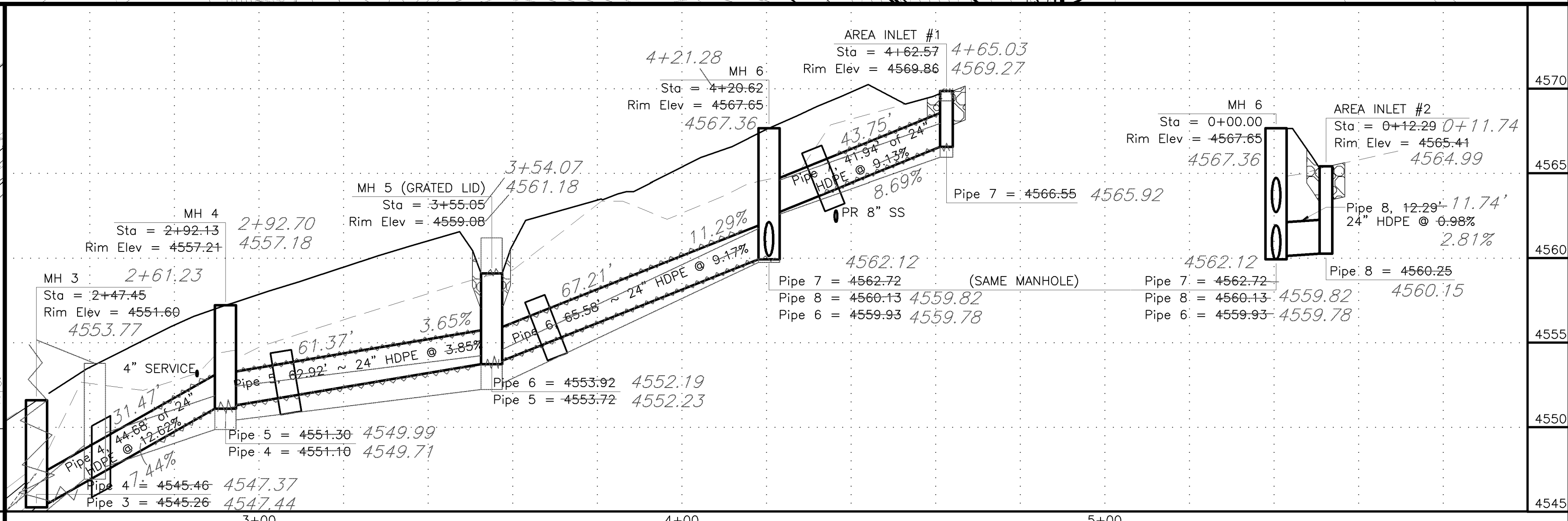
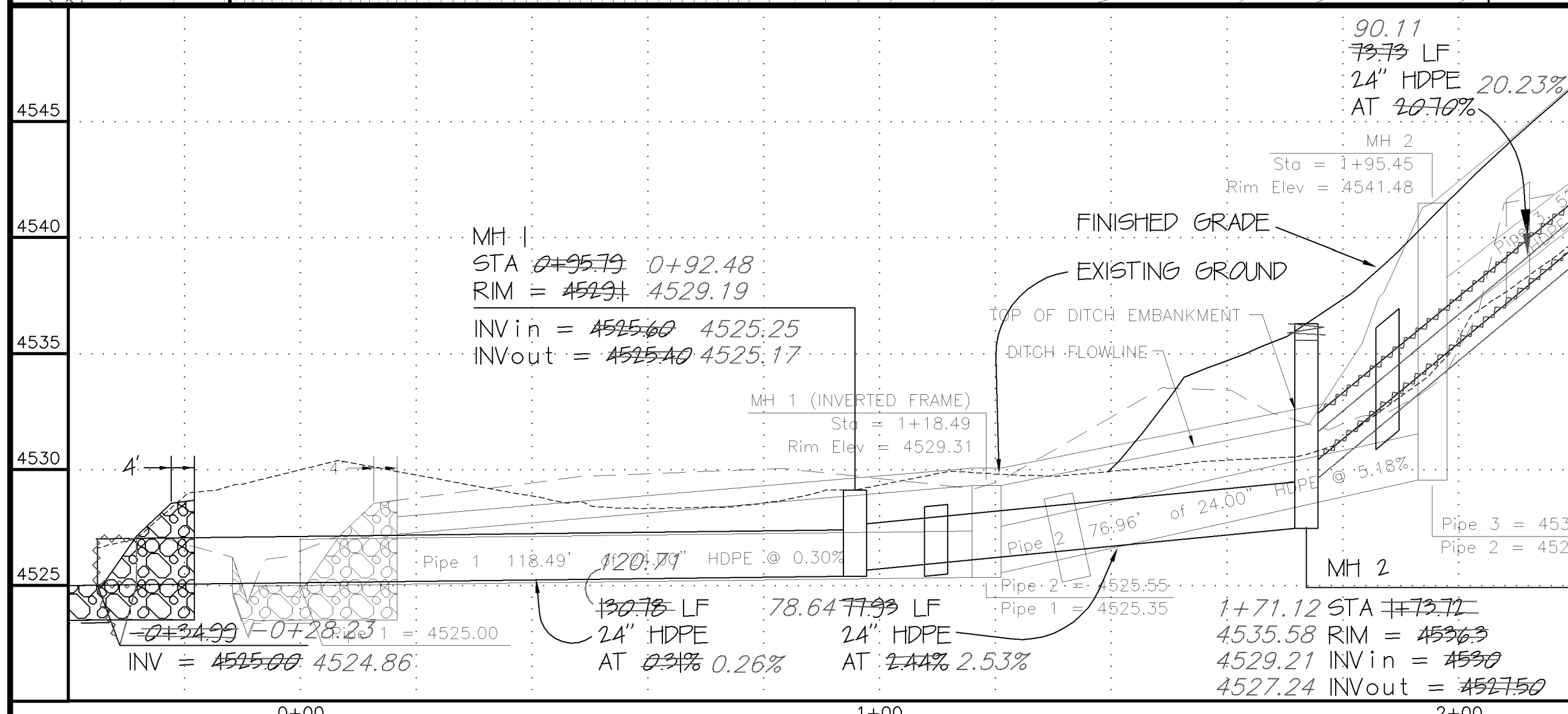
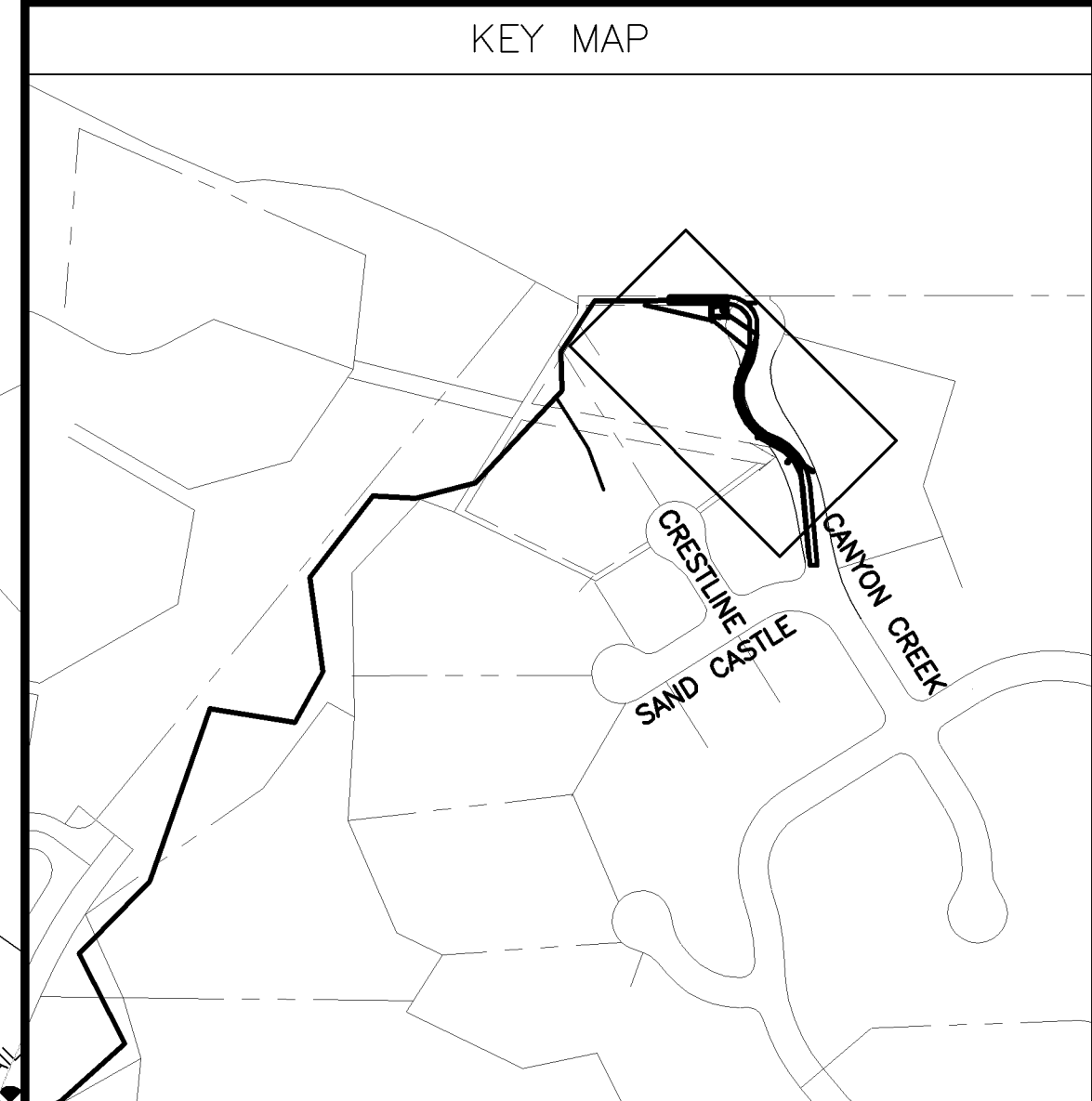




SHADING AND TEXTURE LEGEND

FACILITY OR SURFACE TREATMENT	EXISTING	PROPOSED	REMOVE & REPLACE
AGGREGATE GRAVEL (CLASS 6)			
AGGREGATE ROADWAY			
BUILDING			
RIPRAP			PLAN PROFILE
WASHED ROCK			

- CONSTRUCTION NOTES
- 30.1 CONSTRUCT STORM SEWER.
  - 34.1G CONSTRUCT SINGLE GRATE ONLY INLET, GRATE TYPE C.
  - G58.1 CONSTRUCT CUT-OFF WALL PER STANDARD SPECIFICATIONS.
  - 65.1 CONSTRUCT STANDARD 5' DIA. MH.
  - 203.82 TRENCH & BACKFILL FOR ELECTRIC POWER PER SPECIAL PROVISIONS
  - 212/213.1 SEED AND MULCH PER SPECIAL PROVISIONS ALL SURFACE AREAS DISTURBED BY CONSTRUCTION THAT WILL NOT BE HARD SURFACED OR GRAVELED.
  - 506.1 CONSTRUCT LOOSE RIPRAP LINER PER DETAILS AND/OR SPECIAL PROVISIONS.



REVISION	DESCRIPTION	DATE	SCALE	PLAN	PROFILE	SECTIONS
REVISION A	STORM SEWER REALIGNED BY CITY 10-16-01		HORIZONTAL	0 10 20 40	0 10 20 40	
REVISION B	REV'D NE LEG OF HAMMERHEAD TURNAROUND	11-20-02	VERTICAL	0 2.5 5 10	0 2.5 5 10	
REVISION C	ASBUILT	JUNE 2003				

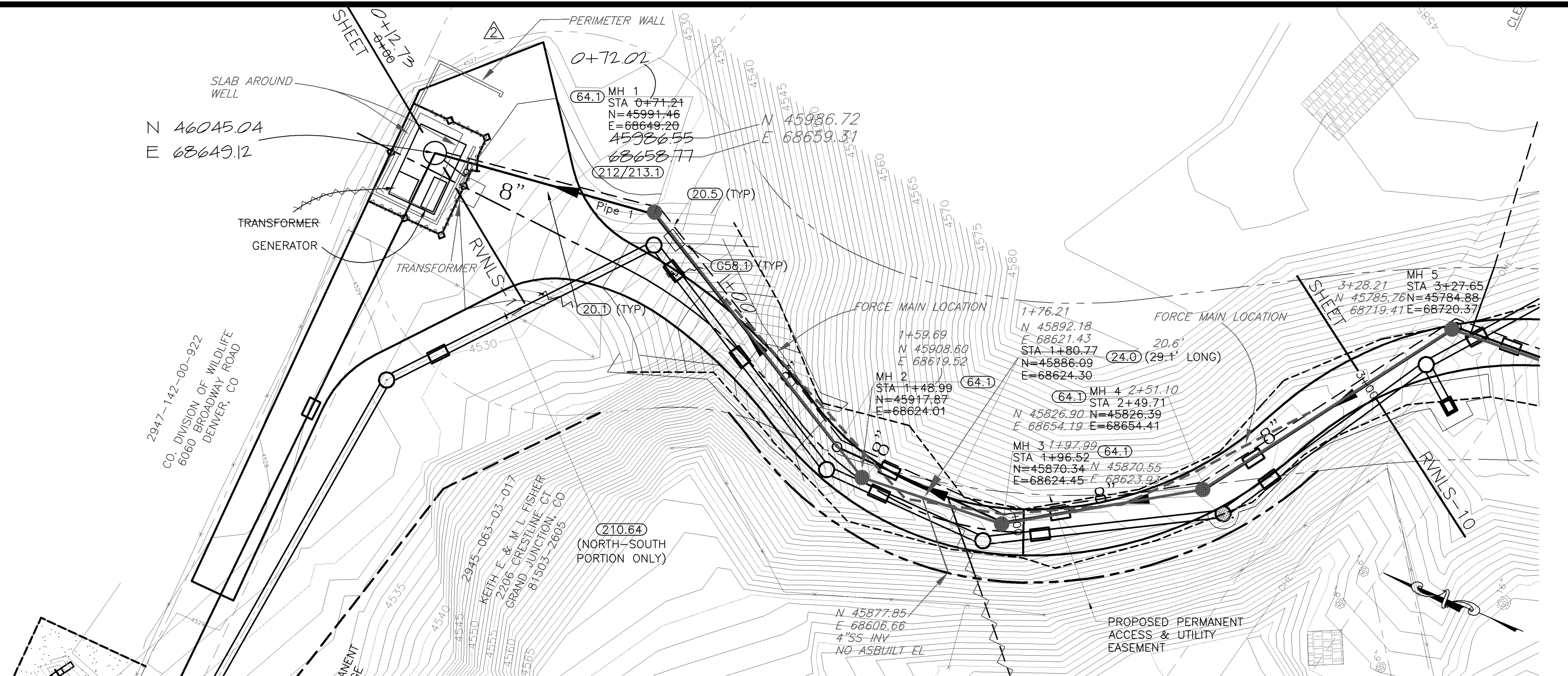
GR WILLIAMS ENGINEERING, INC.  
1231 19 ROAD, FRUITA, COLORADO 81521-9689  
(970) 858-1014 PHONE (970) 858-1007 FAX

REDLANDS VILLAGE NORTHWEST S.I.D.  
CANYON CREEK STORM SEWER  
Plan & Profile

RVNLS-8  
FILENAME  
ST010101.DWG

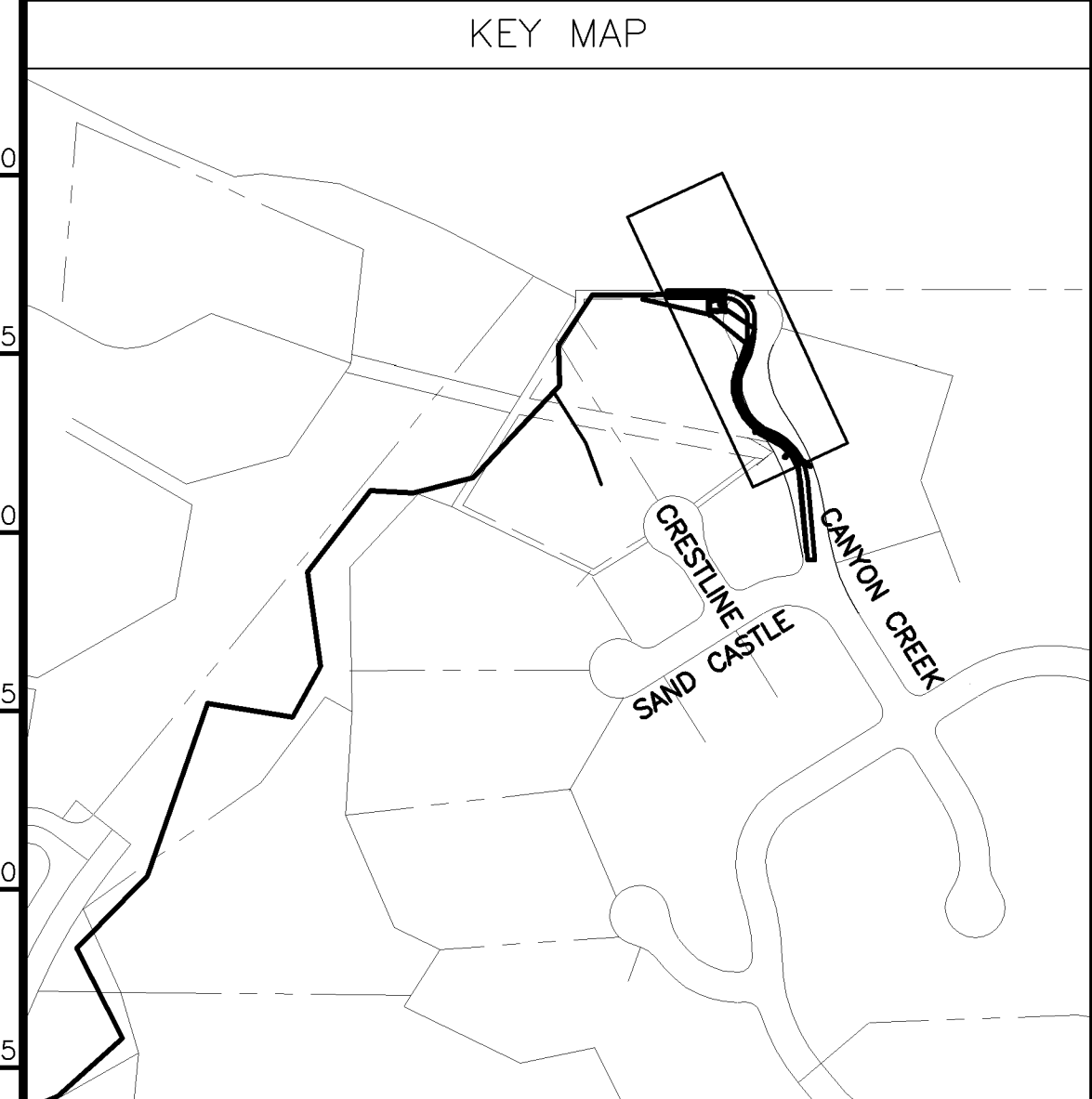
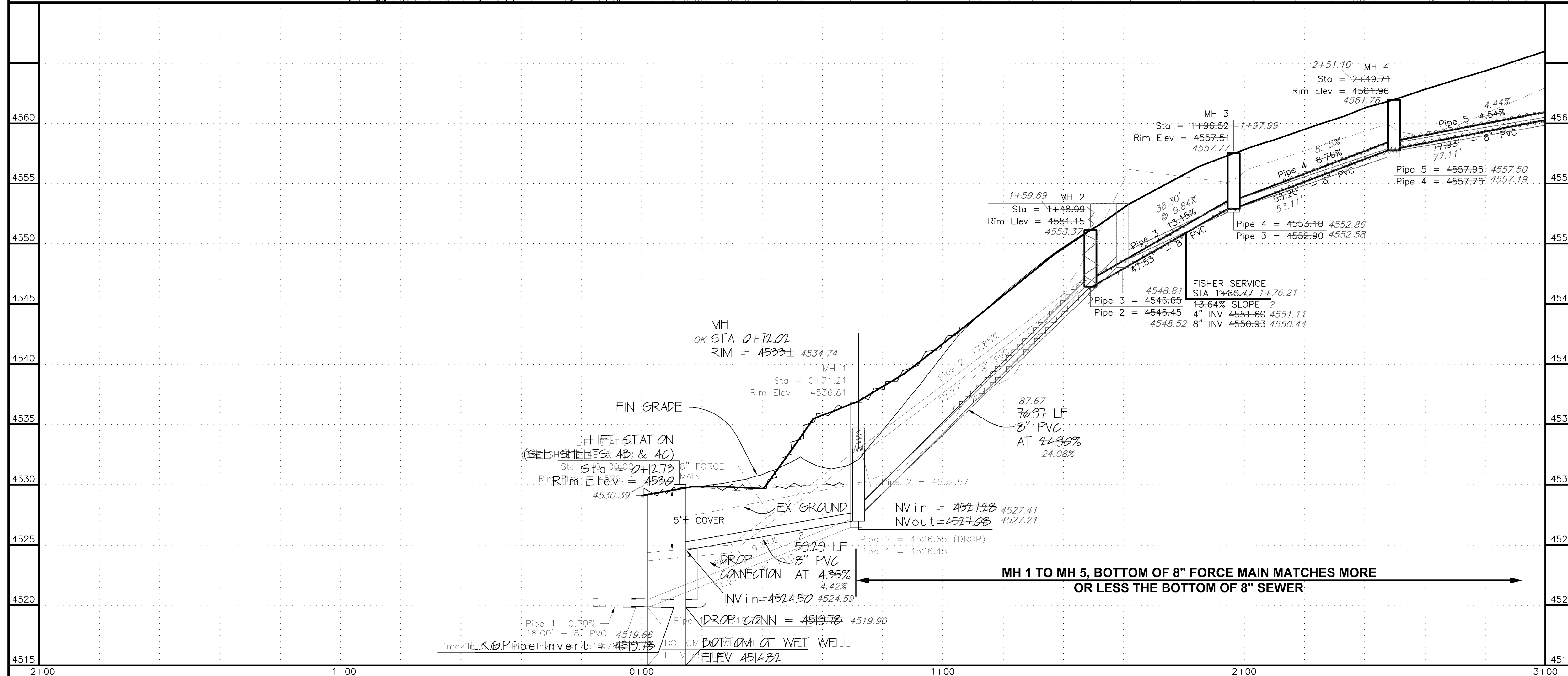
D:\F10223 (LK GULCH LIFT STA REV) \DWG\ST010101.DWG, Layout1, 5/31/2007 2:17:35 PM





SHADING AND TEXTURE LEGEND			
FACILITY OR SURFACE TREATMENT	EXISTING	PROPOSED	REMOVE & REPLACE
AGGREGATE GRAVEL (CLASS 6)			
AGGREGATE ROADWAY			
BUILDING			
RIPRAP		PLAN	
WASHED ROCK			

- CONSTRUCTION NOTES**
- 20.1 CONSTRUCT 8" SDR 35 PVC SANITARY SEWER.
  - 20.5 CONSTRUCT C-900 DR 18 PVC SANITARY SEWER FORCE MAIN.
  - 24.0 CONSTRUCT SANITARY SEWER TAP, SERVICE, AND PLUG, 4" UNLESS NOTED OTHERWISE. LOCATE PER STATIONING SHOWN.
  - G58.1 CONSTRUCT CUT-OFF WALL PER STANDARD SPECIFICATIONS.
  - 64.1 CONSTRUCT STANDARD 4' DIA. MH.
  - 210.64 REMOVE FENCE AS REQUIRED FOR CONSTRUCTION. DO NOT RESET OR RELOCATE.
  - 212/213.1 SEED AND MULCH PER SPECIAL PROVISIONS ALL SURFACE AREAS DISTURBED BY CONSTRUCTION THAT WILL NOT BE HARD SURFACED OR GRAVELED.



REVISION	DESCRIPTION	DATE
1	LIFT STA MOVED BY CITY	10-16-02
2	REV'D NE LEG OF HAMMERHEAD TURNAROUND	11-20-02
3	ASBUILT	JUNE 2003

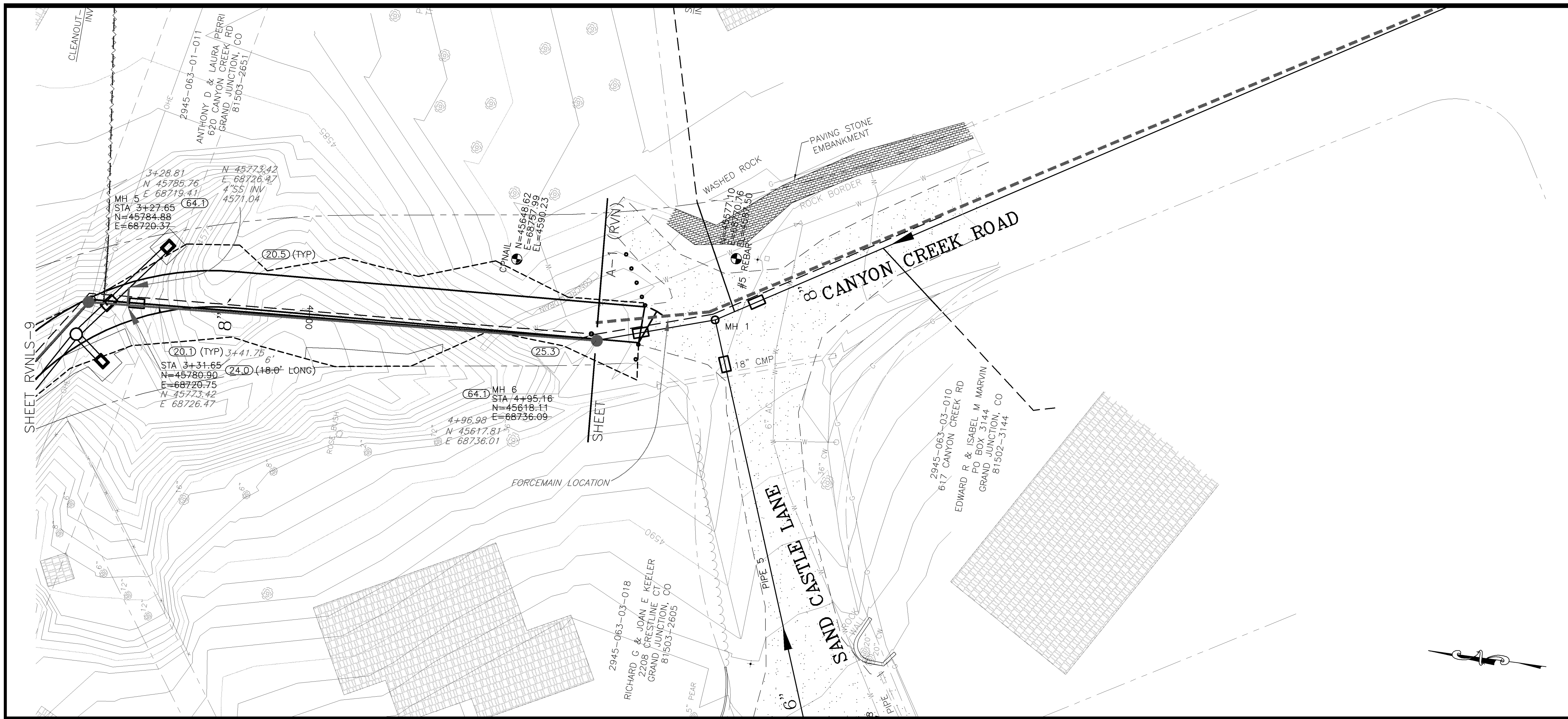
SCALE	PLAN	PROFILE	SECTIONS
HORIZONTAL			
VERTICAL			

GR WILLIAMS ENGINEERING, INC.  
 1231 19 ROAD, FRUITA, COLORADO 81521-9689  
 (970) 858-1014 PHONE (970) 858-1007 FAX

REDLANDS VILLAGE NORTHWEST S.I.D.  
 CANYON CREEK SANITARY SEWER  
 Plan & Profile (Sta 0+00 to 3+00)

RVNLS-9
FILENAME
SS010102.DWG

D:\F10223 (LK GULCH LIFT STA REV)DWG\SS010102.DWG, Layout1, 5/31/2007 2:19:26 PM



SHADING AND TEXTURE LEGEND			
FACILITY OR SURFACE TREATMENT	EXISTING	PROPOSED	REMOVE & REPLACE
AGGREGATE GRAVEL (CLASS 6)			
AGGREGATE ROADWAY			
BUILDING			
RIPRAP			PLAN PROFILE
WASHED ROCK			

**CONSTRUCTION NOTES**

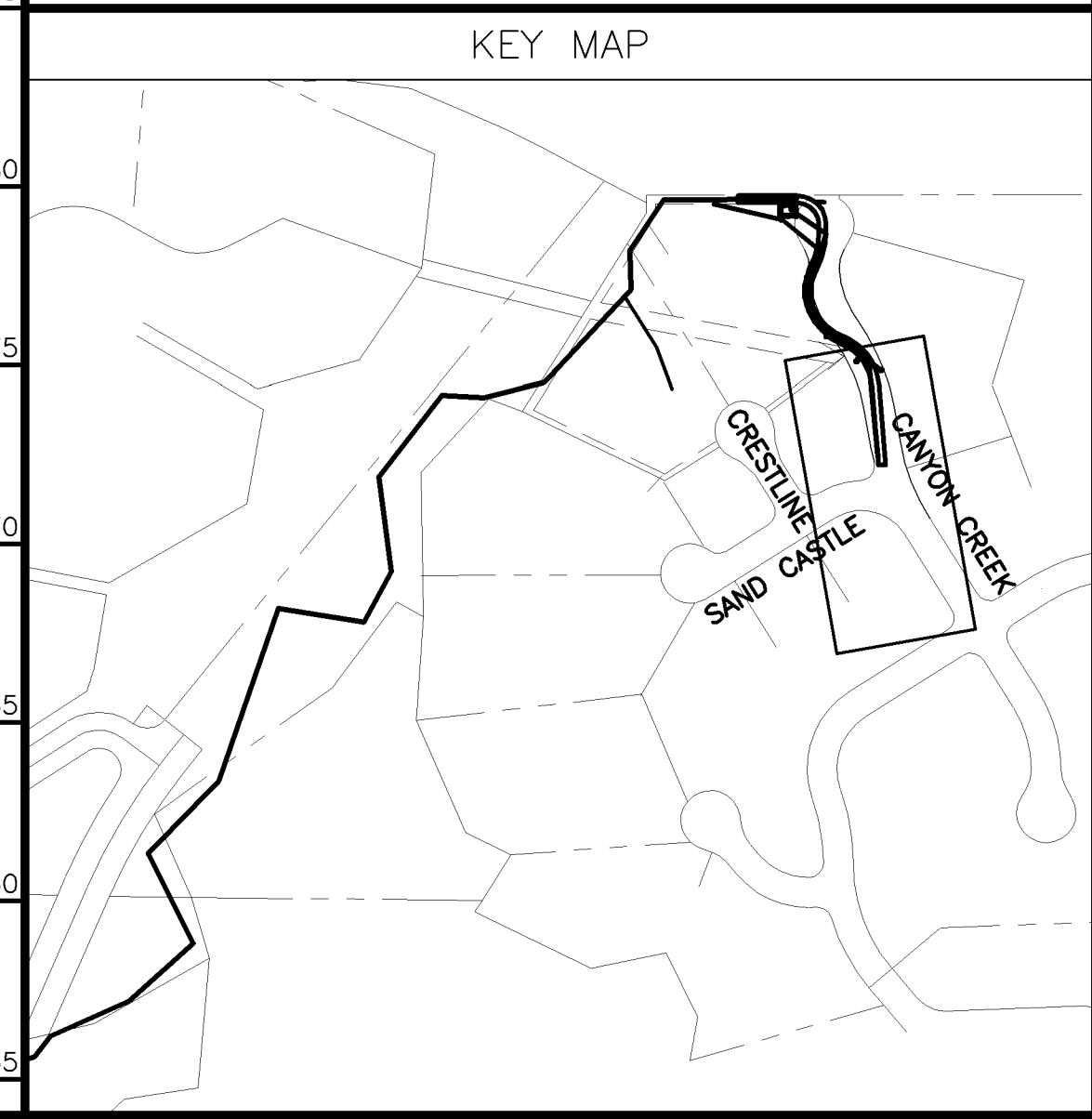
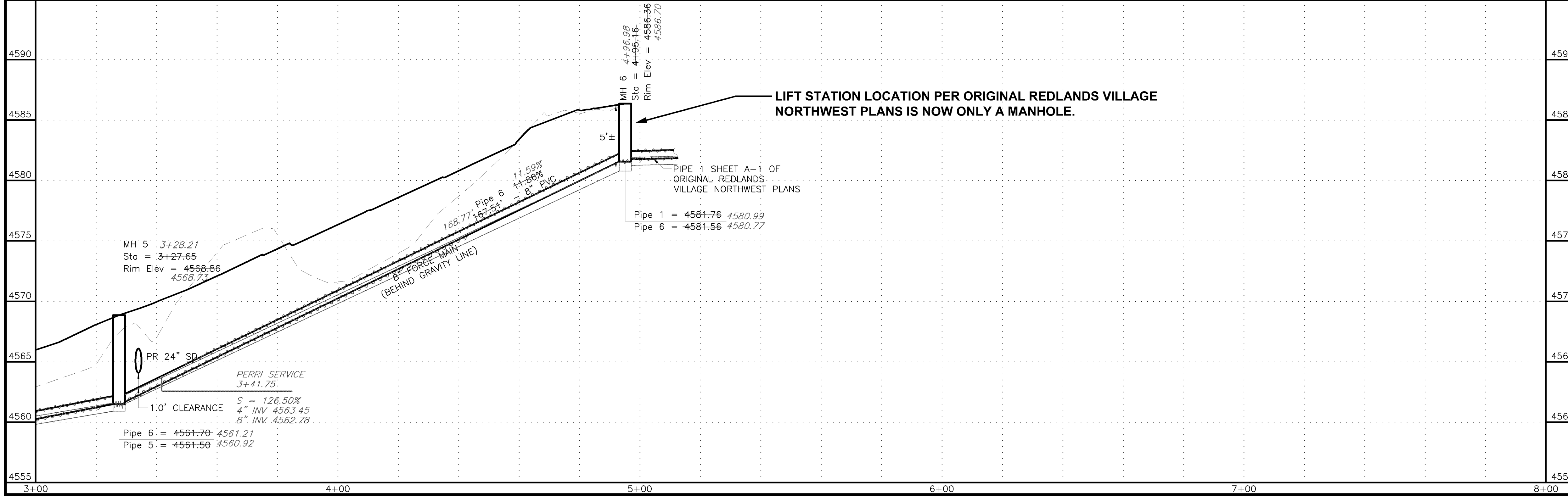
20.1 CONSTRUCT 8" SDR 35 PVC SANITARY SEWER.

20.5 CONSTRUCT C-900 DR 18 PVC SANITARY SEWER FORCE MAIN.

24.0 CONSTRUCT SANITARY SEWER TAP, SERVICE, AND PLUG, 4" UNLESS NOTED OTHERWISE. LOCATE PER STATIONING SHOWN.

25.3 INSTALL FORCE MAIN CLEANOUT AND MH VAULT.

64.1 CONSTRUCT STANDARD 4' DIA. MH.



REVISION	DESCRIPTION	DATE
ASBUILT		JUNE 2003

SCALE	PLAN	PROFILE	SECTIONS
HORIZONTAL			
VERTICAL			

**GR WILLIAMS ENGINEERING, INC.**  
 1231 19 ROAD, FRUITA, COLORADO 81521-9689  
 (970) 858-1014 PHONE (970) 858-1007 FAX

**REDLANDS VILLAGE NORTHWEST S.I.D.**  
**CANYON CREEK SANITARY SEWER**  
 Plan & Profile (Sta 3+00 to 4+95.16)

RVNLS-10  
 FILENAME  
 SSO10202.DWG

D:\F10223 (LK GULCH LIFT STA REV)\DWG\SSO10202CITY.DWG, Layout1, 5/31/2007 2:24:25 PM