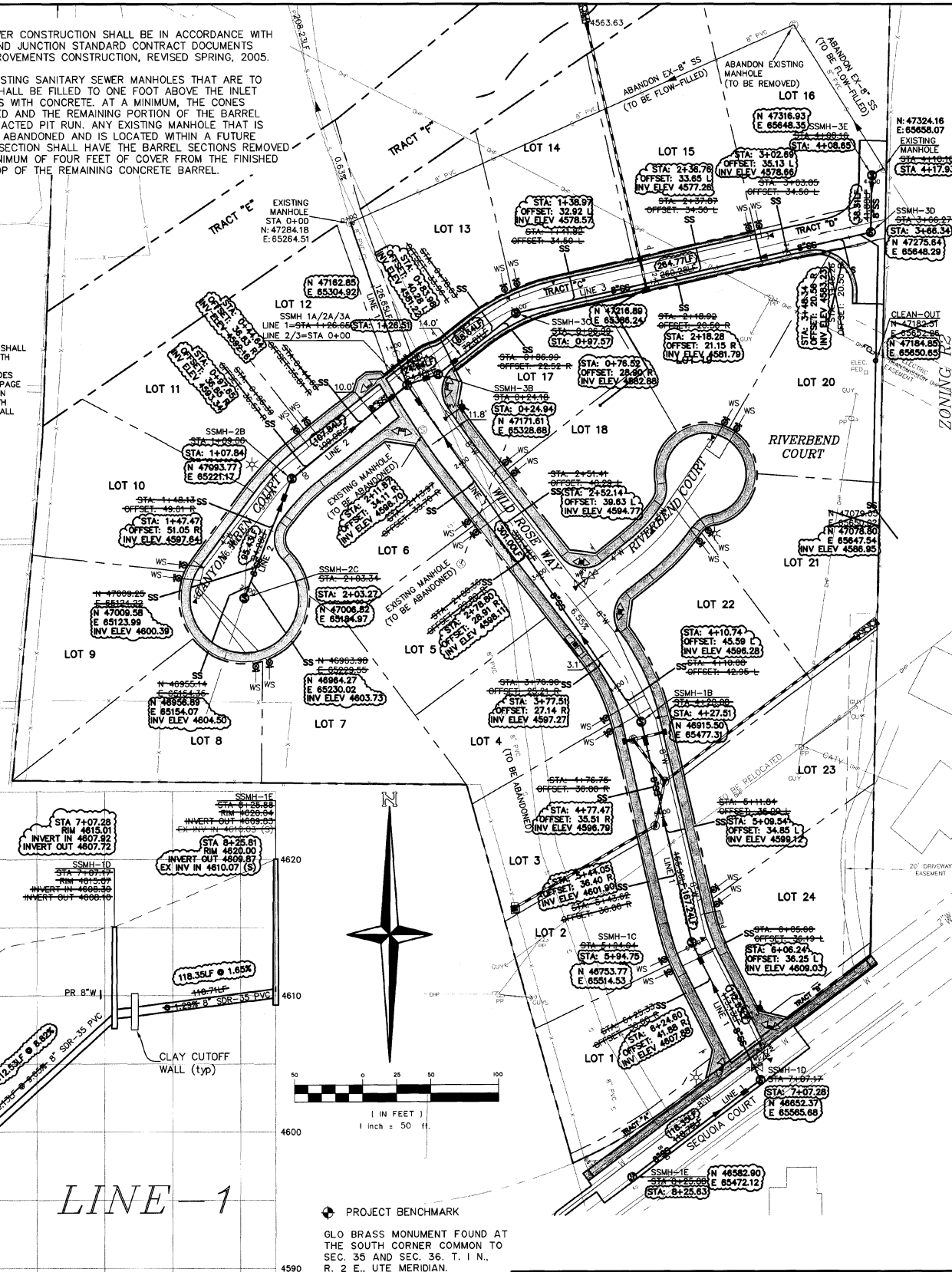


NOTES:
 1. ALL SANITARY SEWER CONSTRUCTION SHALL BE IN ACCORDANCE WITH THE CITY OF GRAND JUNCTION STANDARD CONTRACT DOCUMENTS FOR CAPITAL IMPROVEMENTS CONSTRUCTION, REVISED SPRING, 2005.
 2. THE BASES OF EXISTING SANITARY SEWER MANHOLES THAT ARE TO BE ABANDONED SHALL BE FILLED TO ONE FOOT ABOVE THE INLET AND OUTLET PIPES WITH CONCRETE. AT A MINIMUM, THE CONES SHALL BE REMOVED AND THE REMAINING PORTION OF THE BARREL FILLED WITH COMPACTED PIT RUN. ANY EXISTING MANHOLE THAT IS PROPOSED TO BE ABANDONED AND IS LOCATED WITHIN A FUTURE PROPOSED ROAD SECTION SHALL HAVE THE BARREL SECTIONS REMOVED TO PROVIDE A MINIMUM OF FOUR FEET OF COVER FROM THE FINISHED GRADE TO THE TOP OF THE REMAINING CONCRETE BARREL.

THE INVERT OF THE EXISTING MANHOLE SHALL BE RECONFIGURED TO ALLOW FOR SMOOTH LAMINAR FLOW. THE INVERT SHALL BE RECONSTRUCTED PROVIDING UNIFORM SIDES AND BENCH AS PER STANDARD DETAIL PAGE SS-02 OF THE CITY OF GRAND JUNCTION STANDARDS, AND SHALL HAVE A SMOOTH STEEL TROWEL FINISH WITH 0.20 FEET FALL PROVIDED THROUGH THE MANHOLE.

FOR MANHOLES WITH LESS THAN 0.2' DROP, INVERTS SHALL BE COATED WITH AN EPOXY GEL MATERIAL SUITABLE FOR FEATHERING AND VERTICAL APPLICATION PRIOR TO PLACING MANHOLE IN GROUND. EPOXY COATING SHALL BE DAYTON SUPERIOR, RESI-BOND (J-58), OR APPROVED EQUAL.



BY	DATE	DESCRIPTION
JWM	1/16/06	RESPONSE TO COMMENTS OF 1/1/06
MRH	5/10/06	RESPONSE TO COMMENTS OF 4/13/06
MRH	5/22/06	RESPONSE TO COMMENTS OF 5/9/06
JWM	7/19/06	RESPONSE TO COMMENTS OF 7/17/06
JWM	5/25/07	REVISE TO RECORD CONDITIONS 5/25/07
CCB	10/02/07	REVISE TO RECORD CONDITIONS 10/02/07

PANORAMA TERRACES DEVELOPERS GRAND JUNCTION, CO
PANORAMA TERRACES SUBDIVISION
SANITARY SEWER PLAN & PROFILE

THOMPSON-LANGFORD CORP.
 ENGINEERS AND LAND SURVEYORS
 539 S 1/2 RD, SUITE 2010
 GRAND JUNCTION, COLORADO
 PH. (970) 243-6087
 FAX (970) 241-2845
 tlc@tlcwest.com



DRAWN BY: MRH
 CHECKED BY: JWM



ACCEPTED FOR CONSTRUCTION FOR ONE YEAR FROM THIS DATE.
 Acceptance of these plans does not relieve the developer, contractor, or the engineer from conformance with the City of Grand Junction Standard Specifications.

City of Grand Junction Utility Engineer Date
ACCEPTED AS CONSTRUCTED
 City of Grand Junction Utility Engineer Date

DATE: 07/20/06
 SCALE: Horiz: 1" = 50'
 Project No: 0728-005
 SHEET NO: 12 of 13