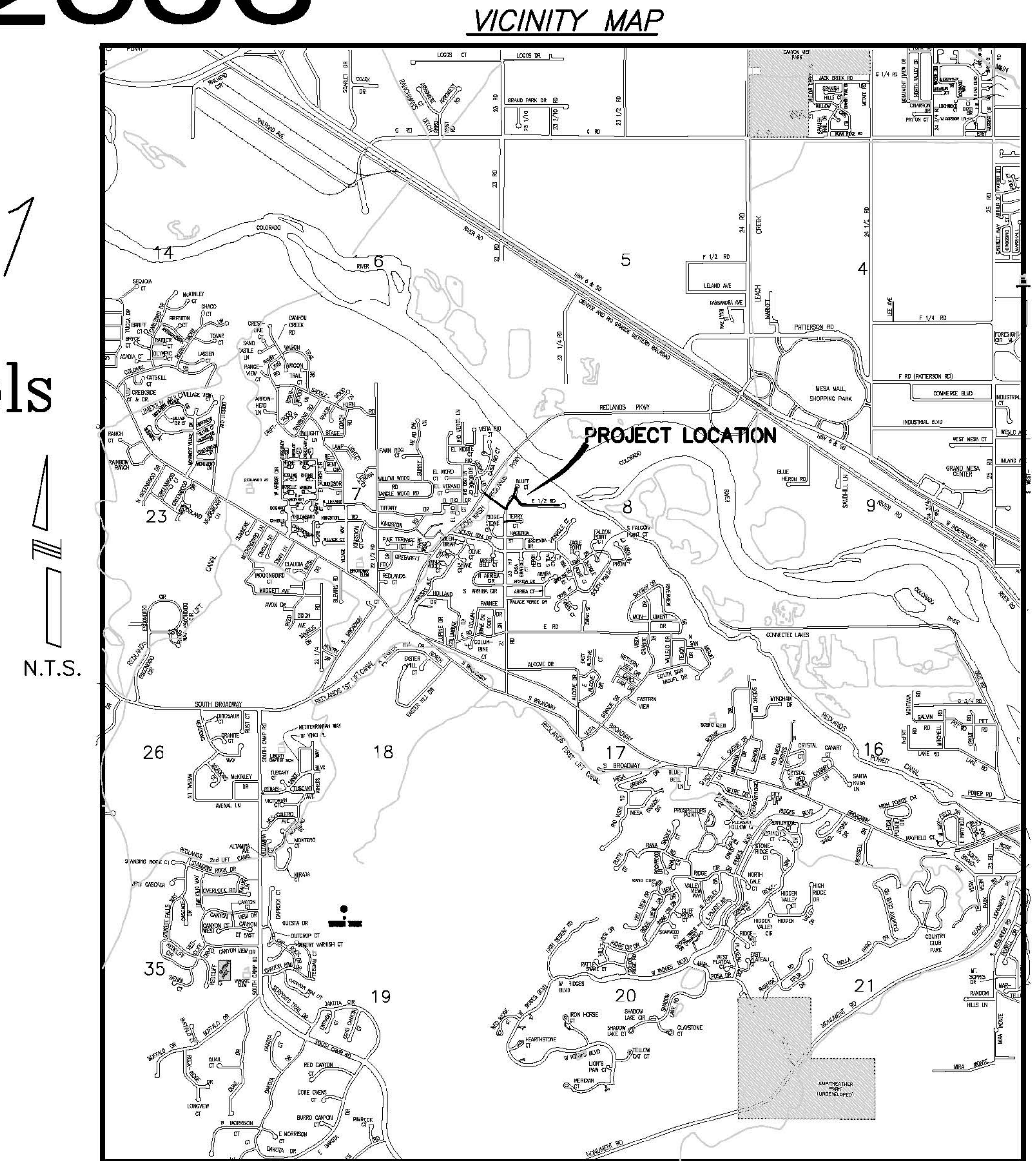


THE BLUFFS SEWER IMPROVEMENT DISTRICT SEPTEMBER, 2006

AS BUILT
2008-06-11

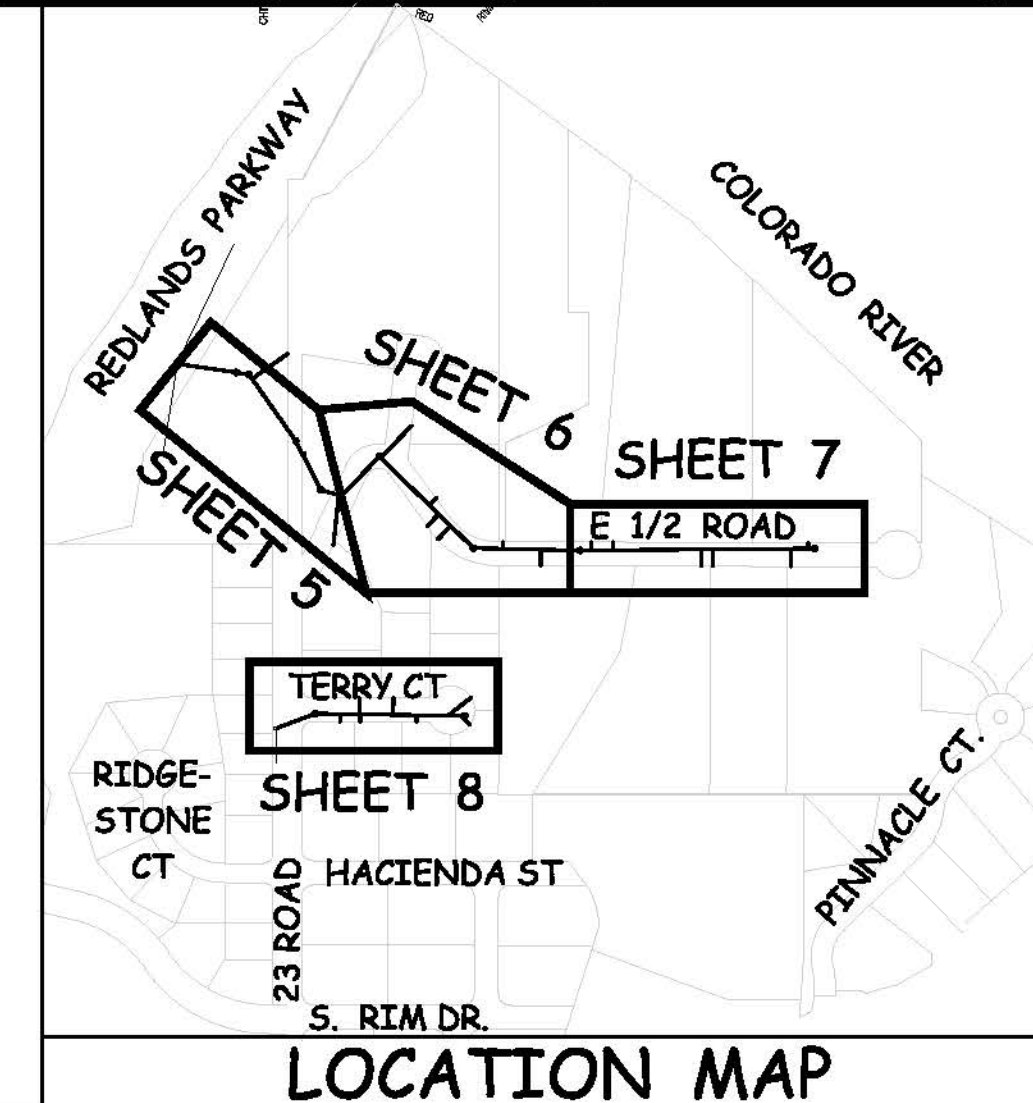
- 1 ————— Cover Sheet
- 2 ————— Standard Abbreviations, Legend, and Symbols
- 3 ————— Summary of Approximate Quantities
- 4 ————— Project Control Map
- 5-8 ————— Sanitary Sewer Plan and Profiles



UTILITIES AND AGENCIES								
AGENCY	NAME	POSITION	ROLE	MAILING ADDRESS	STREET ADDRESS	CITY, STATE	VOICE-WK	FAX
GRAND JUNCTION, CITY OF	JUSTIN VENSEL	PROJECT MANAGER	PROJECT MANAGER	250 N. 5th STREET	250 N. 5th STREET	GRAND JCT., CO 81501	(970) 256-4017	(970) 256-4022
GRAND JUNCTION, CITY OF	BRET GUILLORY	UTILITY ENGINEER	SANITARY SEWER	250 N. 5th STREET	250 N. 5th STREET	GRAND JCT., CO 81501	(970) 244-1590	(970) 256-4022
GRAND VALLEY IRRIGATION CO.	PHIL BERTRAND		IRRIGATION	688 26 ROAD	688 26 ROAD	GRAND JCT., CO 81506	(970) 242-2762	
BRESNAN	CHUCK WEIDMAN	MANAGER	CABLE TV	2502 FORESIGHT CIRCLE	2502 FORESIGHT CIRCLE	GRAND JCT., CO 81504	(970) 245-8750	(970) 245-6803
U.S. WEST/QWEST	CHRIS JOHNSON	ENGINEER	TELEPHONE	2524 BLICHMANN AVE	2524 BLICHMANN AVE	GRAND JCT., CO 81504	(970) 244-4311	(970) 240-4349
UTE WATER	DARYL MOORE	SUPERVISOR	WATER	PO BOX 460		GRAND JCT., CO 81502	(970) 242-7491	(970) 242-9189
XCEL	DAN STEINKIRCHNER	UNIT MANAGER	GAS, ELECTRIC	2538 BLICHMANN AVE	2538 BLICHMANN AVE	GRAND JCT., CO 81506	(970) 244-2656	(970) 244-2661



*Public Works & Utilities
Engineering Division*



02112400.PDF

DRAWING STATUS:	
<input type="radio"/> PROGRESS	
<input type="radio"/> FINAL CONSTRUCTION DRAWINGS	
<input type="radio"/> ASBUILT	
DESIGNED BY:	
JUSTIN VENSEL, PROJECT MANAGER	DATE
REVIEWED BY:	
BRET GUILLORY, UTILITY ENGINEER	DATE
AUTHORIZED FOR CONSTRUCTION	
TRENTON C. PRALL, CITY ENGINEER	DATE
ACCEPTED AS CONSTRUCTED	
JUSTIN VENSEL, PROJECT MANAGER	DATE

NOTE: NOTIFY AFFECTED UTILITY VENDOR 48 HOURS PRIOR TO EXCAVATIONS THAT WILL EXPOSE UTILITY LINES. THE COVER SHEET WILL HAVE A LISTING OF UTILITY VENDORS AND TELEPHONE NUMBERS.

REVISION	DESCRIPTION	DATE
REVISION Δ AS BUILT		2008-06-11
REVISION Δ		
REVISION Δ		

ABBREVIATIONS

AASTHO	AMERICAN ASSOCIATION OF STATE HIGHWAY & TRANSPORTATION OFFICIALS
ABC	AGGREGATE BASE COURSE
AC	ASBESTOS CEMENT
AP	ANGLE POINT
ASB	ANGLED STRAW BALES
ASP	ALUMINIZED STEEL PIPE
ASTM	AMERICAN SOCIETY FOR TESTING MATERIALS
AWWA	AMERICAN WATER WORKS ASSOCIATION
BC	BACK OF CURB
BF	BUTTERFLY VALVE
BOW	BACK OF WALK
BCR	BEGIN CURB RETURN
BOT	BOTTOM
BSWMP	BETTER STORM WATER MANAGEMENT PRACTICES
CH	CHORD
CAP	CORRUGATED ALUMINUM PIPE
CDOT	COLORADO DEPARTMENT OF TRANSPORTATION
CI	CAST IRON
C,G,& SW	CURB, GUTTER & SIDEWALK
CL	CENTER LINE
CL	CLEAR
CMP	CORRUGATED METAL PIPE
CO	CLEAN OUT
COMB	COMBINATION (AS IN STORM SEWER AND SANITARY SEWER)
CONC	CONCRETE
CSM	CITY SURVEY MONUMENT
CSP	CORRUGATED STEEL PIPE
CJ	COPPER
DI	DUCTILE IRON
DWY	DRIVEWAY
E	ELECTRIC
ECR	END CURB RETURN
EG	EDGE OF GUTTER
EL	ELEVATION
EP	EDGE OF PAVEMENT
EX	EXISTING
FB	FULL BODY
FC	FACE OF CURB
FG	FINISHED GRADE
E	FLOW LINE
FL	FLANGE
FM	FORCE MAIN
FO	FIBER OPTICS
FS	FAR SIDE
FTG	FOOTING
G	GAS
GB	GRADE BREAK
GM	GAS METER
GV	GATE VALVE
HBP	HOT BITUMINOUS PAVEMENT
HDPE	HIGH DENSITY POLYETHYLENE
INV	INVERT
IRR	IRRIGATION
L	LENGTH OF ARC
LC	LONG CHORD
LF	LINEAR FEET
LL	LONG ARC
LS	SHORT ARC
LT	LEFT
MB	MAILBOX
MCSM	MESA COUNTY SURVEY MONUMENT
MH	MANHOLE
MJ	MECHANICAL JOINT
MW	MILL WRAP
N/A	NOT APPLICABLE
NIC	NOT IN CONTRACT
NOP	NO ONE PERSON
NRCP	NON-REINFORCED CONCRETE PIPE
NS	NEAR SIDE
NTS	NOT TO SCALE
OHP	OVERHEAD POWER
OHT	OVERHEAD TELEPHONE
PC	POINT OF CURVATURE
PCC	POINT OF COMPOUND CURVATURE
PE	POLYETHYLENE
PERF	PERFORATED
PI	POINT OF INTERSECTION
PIP	PLASTIC IRRIGATION PIPE
POC	POINT ON CURVE
POT	POINT ON TANGENT
PR	PROPOSED
PRC	POINT OF REVERSE CURVATURE
PT	POINT OF TANGENCY
PVC	POLYVINYL CHLORIDE
R	RADIUS
RCP	REINFORCED CONCRETE PIPE
REQ'D	REQUIRED
RG	RESTRAINED GLANDS
RL	LONG RADIUS
ROW	RIGHT OF WAY
RP	RADIUS POINT
RR	RAIL ROAD
RS	SHORT RADIUS
RT	RIGHT
S	SLOPE
SAN	SANITARY
SC	SHORT CHORD
SCD	STANDARD CONTRACT DOCUMENTS
SCH	SCHEDULE
SF	SILT FENCE
SL	SECTION LINE
SSRB	STANDARD SPECIFICATIONS FOR ROAD & BRIDGE CONSTRUCTION
SSUU	STANDARD SPECIFICATIONS FOR CONSTRUCTION OF UNDERGROUND UTILITIES
STA	STATION
STL	STEEL
STM	STORM
T	TELEPHONE
TAN	LENGTH OF TANGENT
TC	TOP OF CURB
TH	TEST HOLE
TV	TELEVISION
(TYP)	TYPICAL
UU	UNDERGROUND UTILITIES
VC	VERTICAL CURVE
VCP	VITRIFIED CLAY PIPE
VPC	VERTICAL POINT OF CURVATURE
VPCC	VERTICAL POINT OF COMPOUND CURVATURE
VPRC	VERTICAL POINT OF REVERSE CURVATURE
VPI	VERTICAL POINT OF INTERSECTION
VPT	VERTICAL POINT OF TANGENCY
W	WATER
Δ	DELTA ANGLE

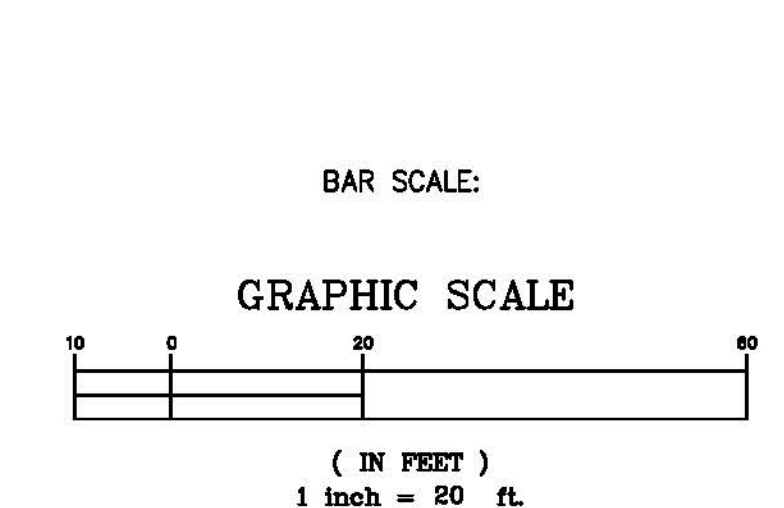
LEGEND

BSWMP DRAINAGE BASIN BOUNDARY	
BSWMP ANCHORED STRAW BALES	
BSWMP SILT FENCE	
BUILDING	
CONCRETE CURB AND GUTTER	
CONCRETE CURB, GUTTER, & SIDEWALK	
CONCRETE DITCH	
CONCRETE SIDEWALK	
CULVERT	
EARTH DITCH	
EDGE OF GRAVEL	
EDGE OF PAVEMENT	
FENCE (BARBED WIRE)	
FENCE (CHAIN LINK)	
FENCE (IRON)	
FENCE (PLASTIC)	
FENCE (TEMPORARY CONSTRUCTION)	
FENCE (WOOD)	
FENCE (WOVEN WIRE)	
GUARD RAIL	
HATCHING: INDICATES ASPHALT REMOVAL	
HATCHING: INDICATES WASHED ROCK SURFACE COURSE	
HATCHING: INDICATES HYDRO-SEEDING OR SOD	
LINE (CENTER OF IMPROVEMENTS)	
LINE (CITY LIMITS)	
LINE (CONTROL)	
LINE (EASEMENT)	
LINE (MONUMENT/SECTION)	
LINE (PROPERTY)	
LINE (RIGHT OF WAY)	
MATCH LINE	
PIPE (IRRIGATION)	
PIPE (SIPHON)	

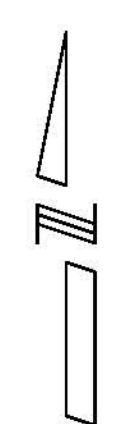
PROPOSED CONCRETE CURB AND GUTTER	
PROPOSED CONCRETE CURB, GUTTER, & SIDEWALK	
PROPOSED CONCRETE SIDEWALK	
PROPOSED "WET" UTILITIES (CONSTRUCTION NOTE WILL INDICATE TYPE, SIZE, AND MATERIAL OF NEW MAIN)	
ALL PROPOSED FEATURES NOT SHOWN IN LEGEND WILL BE SHOWN THE SAME AS THEIR EXISTING COUNTERPART, BUT INDICATED BY BOLDER LINETYPE	
RAIL ROAD	
RETAINING WALL	
STRIPING (CONTINUOUS WHITE)	
STRIPING (DASHED WHITE)	
STRIPING (CONTINUOUS YELLOW)	
STRIPING (DASHED YELLOW)	
TOP OF SLOPE	
CONTOUR LINES (SHOWN BETWEEN TOP & TOE)	
TOE OF SLOPE	
TRAFFIC DETECTOR LOOP	
UTILITY LINE (ABANDON) (THIS CASE A WATER LINE)	
UTILITY LINE (CABLE TV)	
UTILITY LINE (ELECTRIC)	
UTILITY LINE (FIBER OPTIC)	
UTILITY LINE (GAS)	
UTILITY LINE (HIGH VOLTAGE OVERHEAD POWER)	
UTILITY LINE (OVERHEAD POWER)	
UTILITY LINE (OVERHEAD TELEPHONE)	
UTILITY LINE (SANITARY SEWER)	
UTILITY LINE (SANITARY SEWER FORCE MAIN)	
UTILITY LINE (SANITARY SEWER SERVICE)	
UTILITY LINE (STORM SEWER)	
UTILITY LINE (STORM SEWER, PERFORATED)	
UTILITY LINE (STORM/SANITARY SEWER SEWER COMBINATION)	
UTILITY LINE (TELEPHONE)	
UTILITY LINE (WATER)	

SYMBOLS

BENCH MARK	
CATCH BASIN	
CLEAN OUT	
CURB STOP	
FIRE HYDRANT	
GUY WIRE ANCHOR	
HEADGATE	
IRRIGATION PUMP	
MAILBOX	
MANHOLE (ELECTRIC)	
MANHOLE (GAS)	
MANHOLE (SANITARY/STORM)	
MANHOLE (TELEPHONE)	
MANHOLE (TV)	
MANHOLE (WATER)	
METER (GAS)	
METER (WATER)	
PEDESTAL (TELEPHONE)	
PEDESTAL (TV)	
PROPERTY PIN	
PULL BOX	
REDUCER FITTING	
SIGN OR POST (SIGN TYPE NOTED)	
SPRINKLER HEAD	
STREET LIGHT	
SURVEY MONUMENT (CITY)	
SURVEY MONUMENT (TYPE NOTED)	
TEST HOLE	
TRAFFIC PAINT MARKING	
TRAFFIC SIGNAL POLE AND MAST ARM	
UTILITY POLE	
VALVE (GAS)	
VALVE (IRRIGATION)	
VALVE (WATER)	
VEGETATION (HEDGE OR BUSH)	
VEGETATION (TREE STUMP)	
VEGETATION (TREE) (CALIPER SIZE NOTED)	
WATER HYDRANT	
WEIR	
YARD LIGHT	



NORTH ARROW:



N:\Landscape\148226 (The Bluffs STD)\DWG\BASE-F48226.dwg, 2, 6/11/2008 6:33:20 AM

REVISION	DESCRIPTION	DATE	DRAWN BY	JCS	DATE	4-02
REVISION			DESIGNED BY		DATE	
REVISION			CHECKED BY		DATE	
REVISION			APPROVED BY		DATE	

SCALE	
PLAN	PROFILE
HORIZ. 1"=20'	HORIZ. _____
VERT. _____	VERT. _____



PUBLIC WORKS AND UTILITIES ENGINEERING DIVISION

CITY OF GRAND JUNCTION STANDARD ABBREVIATIONS, LEGEND, AND SYMBOLS SHEET

Item No.	CDOT/ City Reference no.	Description	Quantity		Quantity		Quantity		Quantity		Quantity	
			Unit	Unit	Unit	Unit	Unit	Unit	Unit	Unit		
			Sheet 5		Sheet 6		Sheet 7		Sheet 8		Total	
1	102.10	Sewer Pipe Anchors	2	EA		EA		EA		EA	2	EA
2	103.11	Rock Excavation	155	CY		CY		CY		CY	155	CY
3	103.16	Import pit run material, include excavation, haul, and disposal of unsuitable material.		TON		TON		TON		TON	700	TON
4	104.0	Vertical Relocation Of Existing 2" PVC Ute Waterline		EA		EA		EA	1	EA	1	EA
5	104.0	Vertical Relocation Of Existing 8" Ute Waterline		EA		EA		EA	1	EA	1	EA
6	104.4	Cap Top Half of Sewer in Concrete		LF		LF		LF	20	LF	20	LF
7	104.0	Remove Existing Pipe and Replace with 10" DR14 C900 Class 200		LF		LF	41	LF		LF	41	LF
8	108.2	6" Gravity Sewer Pipe (SDR-35) w/ Native backfill. Includes granular bedding and haunching material and clay cut-off wall.	479	LF	590	LF	500	LF	399	LF	1968	LF
9	108.2	4" Gravity Sewer Pipe (SDR-35) w/ native backfill. Includes granular bedding and haunching material.	201	LF	235	LF	153	LF	156	LF	745	LF
10	108.3	Sewer Service Tap, 6" X4" Full Body Wye w/ 4" 45 degree bend.	3	EA	6	EA	6	EA	7	EA	22	EA
11	108.5	Sanitary Sewer Basic Manhole w/ Components (48" I.D.)	5	EA	2	EA	2	EA	2	EA	11	EA
12	108.5	Manhole Barrel Section (D > 5')(48" I.D.)	11	VF	6	VF	9	VF	3	VF	29	VF
13	108.5	Connect to Existing Manhole (6" Pipe)	1	EA		EA		EA	1	EA	2	EA
14	202.0	Removal of Asphalt Mat (Planning) for Trench Excavation	45	SY	530	SY	288	SY	350	SY	1213	SY
15	202/608	Remove And Replace Concrete Or Asphalt Curb And Gutter/Curbing/Gutter/Border. Size And Style Vary. Match Existing.		LF		LF		LF	12	LF	12	LF
16	208.0	Silt Fence	60	LF		LF		LF		LF	60	LF
17	208.0	Erosion Control Logs	40	LF		LF		LF		LF	40	LF
18	209.0	Dust Abatement									1	LS
19	209.0	Portable Sanitary Facility									1	LS
20	210.0	Reset Guardrail	12	LF		LF		LF		LF	12	LF
21	210.0	Reset Irrigation System Components (Per Each Property)		EA		EA	1	EA	3	EA	4	EA
22	212.0	Sod. Reuse existing install 12" Topsoil		SY		SY	5	SY	10	SY	15	SY
23	212.0	Bonded Fiber Matrix W/ Native Dry Land Seed Mix	1075	SY		SY		SY		SY	1075	SY
24	304.0	Washed Rock Surface Course (2-3" thick) includes underlying Aggregate Base Course (Class 6) (4" thick) (shoulders and gravel driveways)	475	SY	162	SY	295	SY	145	SY	1077	SY
25	304.0	Aggregate Base Course (Class 6) (6" thick)	45	SY	530	SY	288	SY	350	SY	1213	SY
26	401.0	HMA (3" Thick) (Grading SX Binder 64-22) (One 3" Lift)	45	SY	530	SY	288	SY	350	SY	1213	SY
27	625.0	Construction Surveying									1	LS
28	626.0	Mobilization									1	LS
29	630.0	Traffic Control									1	LS
30	CGC56	News Letter									1	LS
FA		Force Account									-	-

N:\LandProc\F48226 (The Bluffs STD)\DWG\BASE\F48226.dwg, 3, 6/11/2008 6:33:56 AM

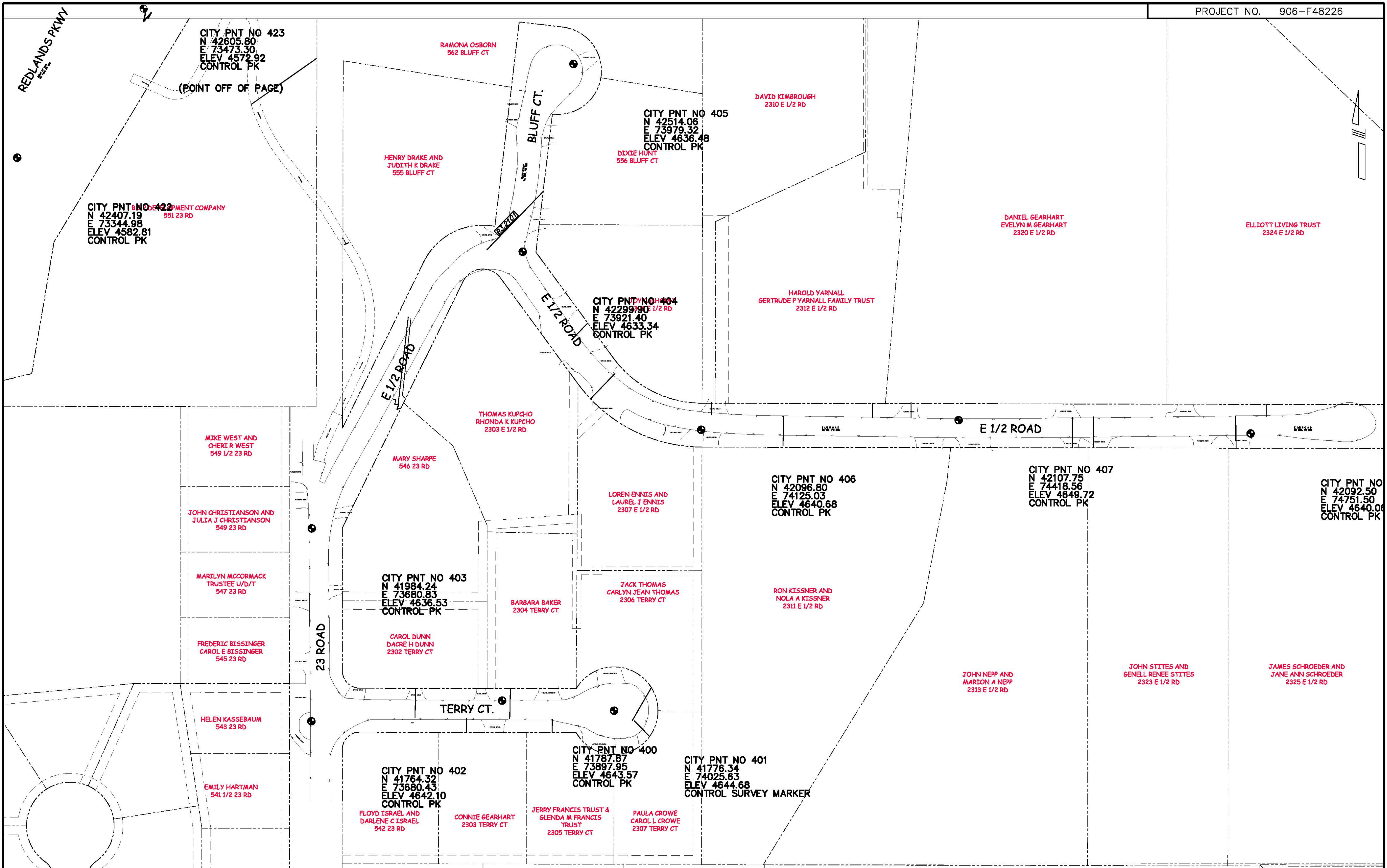
REVISION Δ _____	DATE _____	DRAWN BY _____	DATE _____
REVISION Δ _____	DATE _____	DESIGNED BY _____	DATE _____
REVISION Δ _____	DATE _____	CHECKED BY _____	DATE _____
REVISION Δ _____	DATE _____	APPROVED BY _____	DATE _____

SCALE _____
N.T.S.



**PUBLIC WORKS
AND UTILITIES
ENGINEERING DIVISION**

**THE BLUFFS SEWER IMPROVEMENT DISTRICT
SUMMARY OF APPROXIMATE QUANTITIES**



N:\Land\Proj\F48226 (The Bluffs STD)\DWG\BASE-F48226.dwg, 4 (project control map), 6/11/2008 6:34:30 AM

REVISION	DESCRIPTION	DATE	DRAWN BY	DATE
REVISION Δ			DESIGNED BY	DATE
REVISION Δ			CHECKED BY	DATE
REVISION Δ			APPROVED BY	DATE

SCALE
N.T.S.

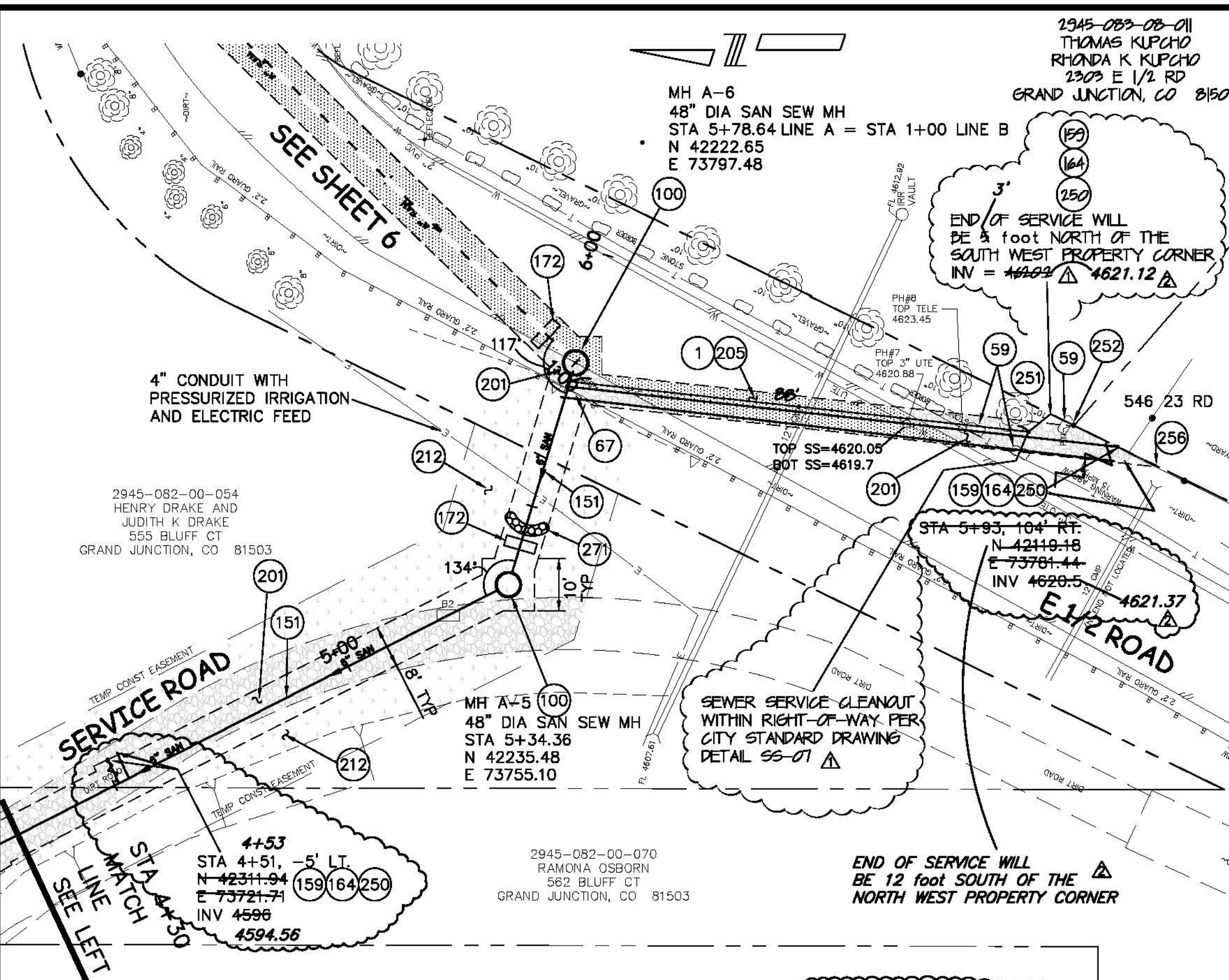
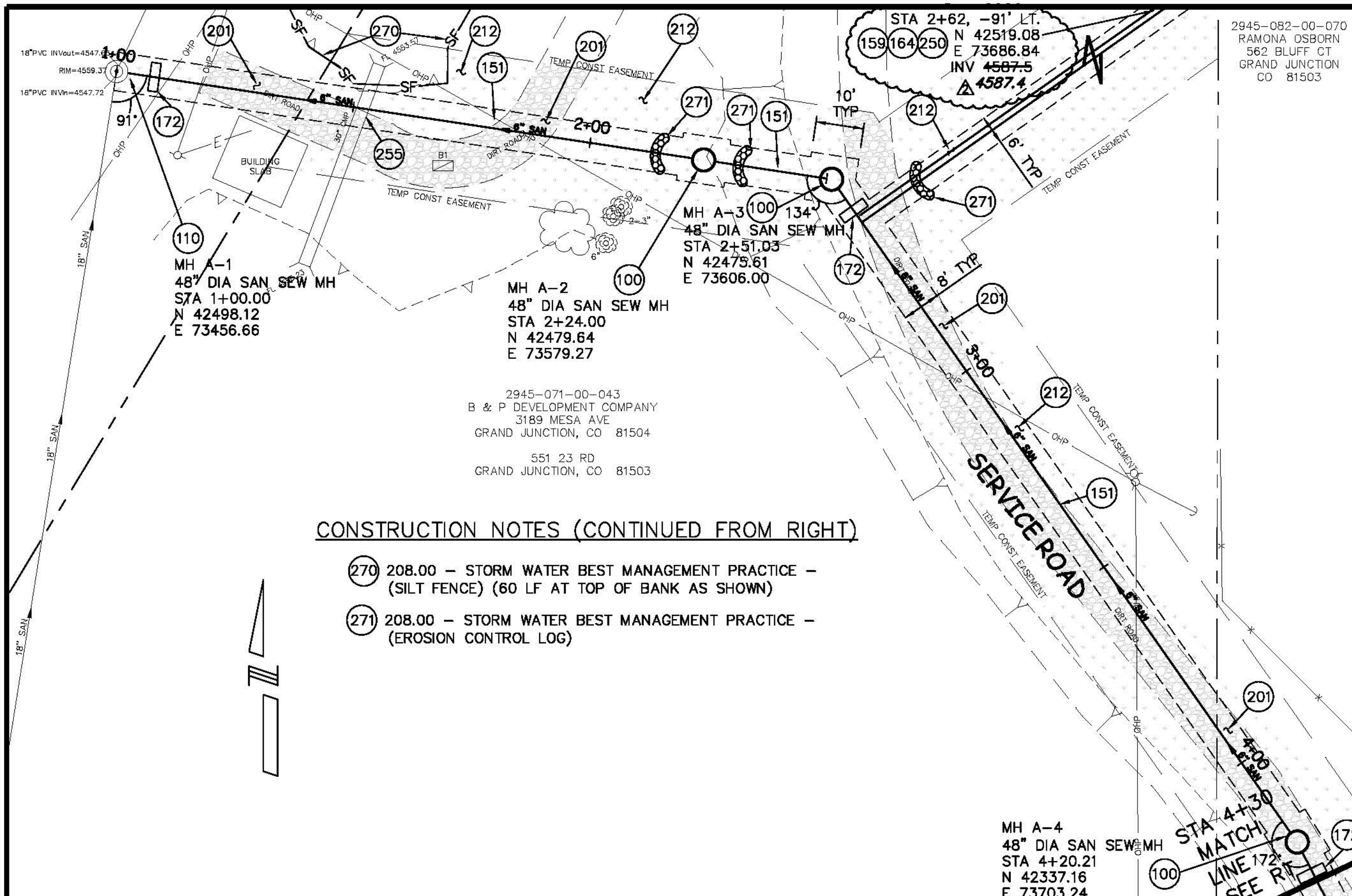


**PUBLIC WORKS
AND UTILITIES
ENGINEERING DIVISION**

**THE BLUFFS SEWER IMPROVEMENT DISTRICT
PROJECT CONTROL MAP**

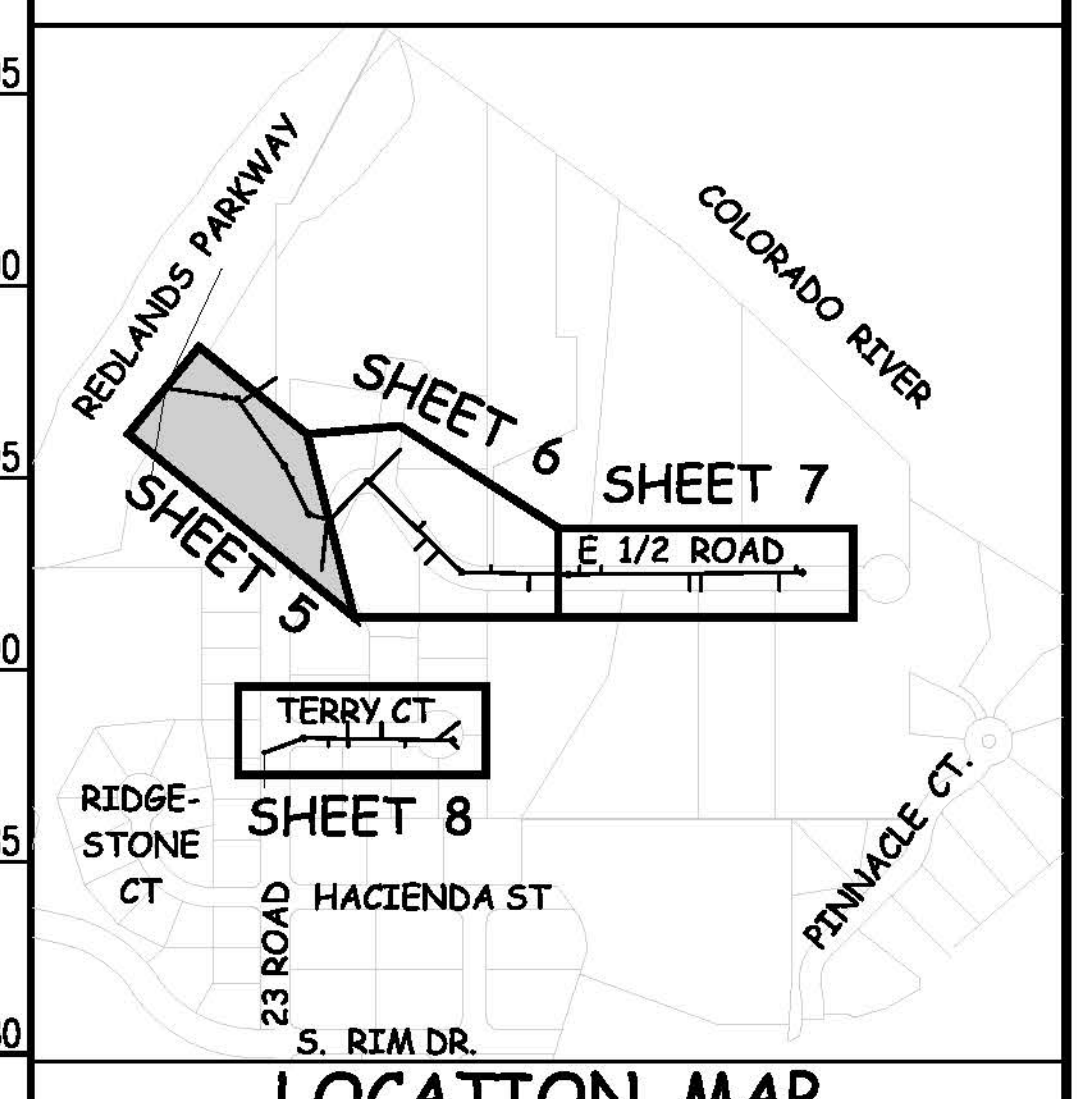
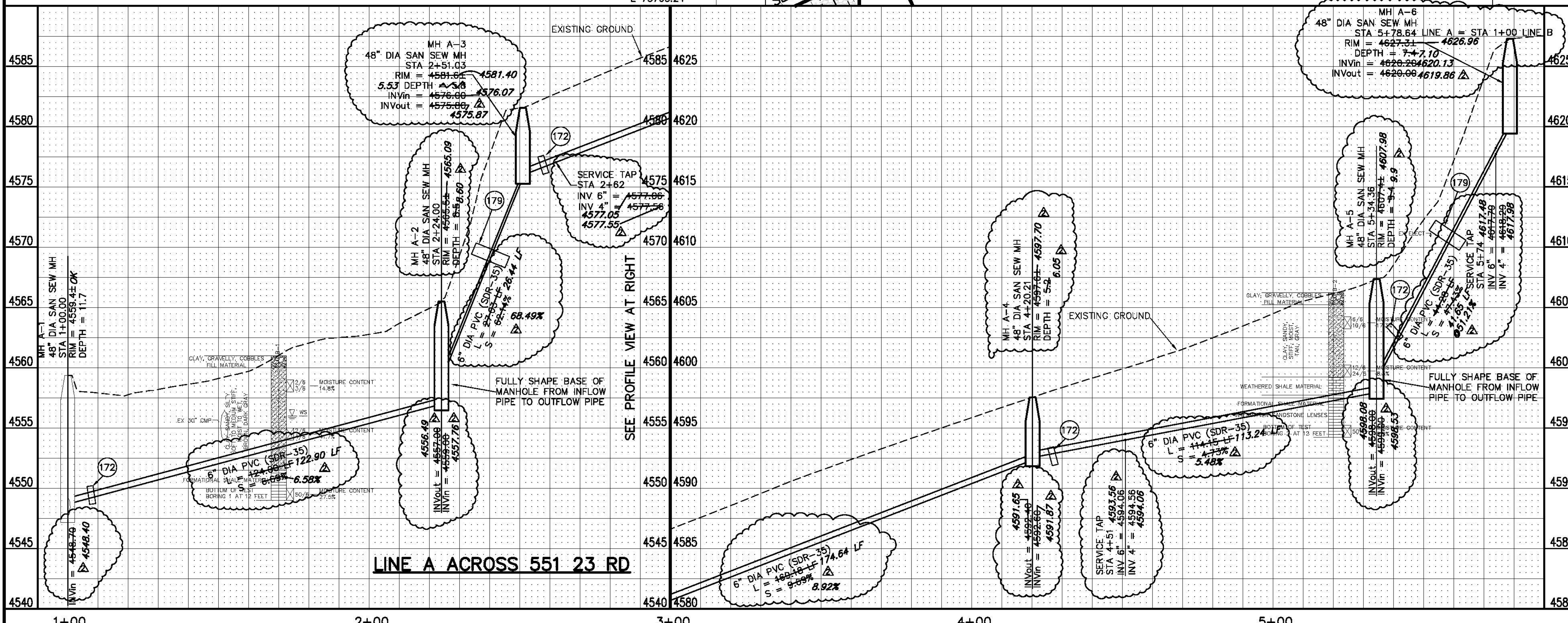
CONSTRUCTION NOTES

- 1 103.30 - REMOVAL OF ASPHALT MAT (PLANING) FOR TRENCH EXCAVATION.
- 59 210.00 - RESET STONE/ROCK/BRICK/MASONRY BORDER. COST IS INCIDENTAL TO COST OF SEWER PIPE INSTALLATION.
- 67 210.00 - RESET GUARDRAIL
- 100 102.11/108.5 - STANDARD 48" DIAMETER SANITARY SEWER MANHOLE; INCLUDES CONNECTION OF ADJACENT SEWER LINE, FORMING INVERTS AND ADJUSTING TO FINAL GRADE. (SEE CITY OF GRAND JUNCTION STANDARD DETAIL SS-02).
- 110 102.11 - CONNECT TO EXISTING MANHOLE AS PER STD. DETAIL SS-04, SS-08.
- 151 102.90 - 6" GRAVITY SEWER PIPE (SDR-35 PVC). INCLUDES TYPE A BEDDING AND HAUNCHING MATERIAL AND BACKFILL OF TRENCH WITH NATIVE MATERIALS MEETING 103.16 EARTH BACKFILL MATERIAL.
- 159 102/103/104 - 4" SEWER SERVICE TAP, 6" X 4" FULL BODY WYE (SEE STD. DETAIL SS-06).
- 164 102/103/104 - 4" SDR-35 PVC SANITARY SERVICE LINE WITH NATIVE BACKFILL MEETING 103.16 EARTH BACKFILL MATERIAL. INCLUDES SINGLE SERVICE LINE PER TRENCH, TYPE A BEDDING AND HAUNCHING, AND END-OF-SERVICE CAP.
- 172 103.00 - CLAY CUT-OFF WALL (INCIDENTAL TO SEWER INSTALLATION PAY ITEM).
- 179 104.40 - CONCRETE SEWER PIPE ANCHOR. (SEE PROJECT SPECIAL PROVISIONS) (INCIDENTAL TO SEWER INSTALLATION PAY ITEM).
- 201 304.00 - WASHED ROCK SURFACE COURSE FOR GRAVEL DRIVEWAY/SHOULDERS. MATCH EXISTING TYPE. THICKNESS IS 2" MIN AND 3" MAX. INCLUDES 4" CLASS 6 ABC COMPACTED TO 90% AASHTO T-180 BELOW SURFACE COURSE.
- 205 103/304/401 - PAVEMENT AND ROAD BASE REPLACEMENT ON SIDE STREETS AND DRIVEWAYS: 3" HOT BITUMINOUS PAVEMENT (GRADING SX, PG 64-22 OIL), OVER 6" CLASS 6 ABC (SEE STD. DETAIL GU-03). PAID PER SY.
- 212 212.00 - HYDRO-SEED WITH NATIVE SEED MIX.
- 250 CONTRACTOR IS RESPONSIBLE FOR REPAIR COSTS ASSOCIATED WITH ANY/ALL DAMAGE TO PRIVATE PROPERTY BEHIND ROW LINE OR EASEMENT LIMITS.
- 251 PROTECT TREE/BUSH. REFER TO SPECIAL PROVISIONS FOR ROOT TREATMENT.
- 252 PROTECT OR REFERENCE AND RESET PROPERTY PIN. COST IS INCIDENTAL TO COST OF SEWER INSTALLATION.
- 255 SPAN/SUPPORT/PROTECT EXISTING STORMWATER/IRRIGATION CULVERT. AMEND BACKFILL WITH BENTONITE POND LINER (MIXED AS PER MFG. SPECIFICATIONS) FOR PLACEMENT AROUND CULVERT (2 FT. ALL SIDES OF PIPE OVER EXPOSED LENGTH) DURING BACKFILL OPERATION. INCIDENTAL TO SEWER INSTALLATION PAY ITEM.
- 256 PROTECT EXISTING FENCE.



CONSTRUCTION NOTES (CONTINUED FROM RIGHT)

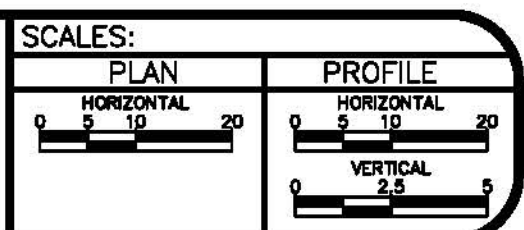
- 270 208.00 - STORM WATER BEST MANAGEMENT PRACTICE - (SILT FENCE) (60 LF AT TOP OF BANK AS SHOWN)
- 271 208.00 - STORM WATER BEST MANAGEMENT PRACTICE - (EROSION CONTROL LOG)



LOCATION MAP

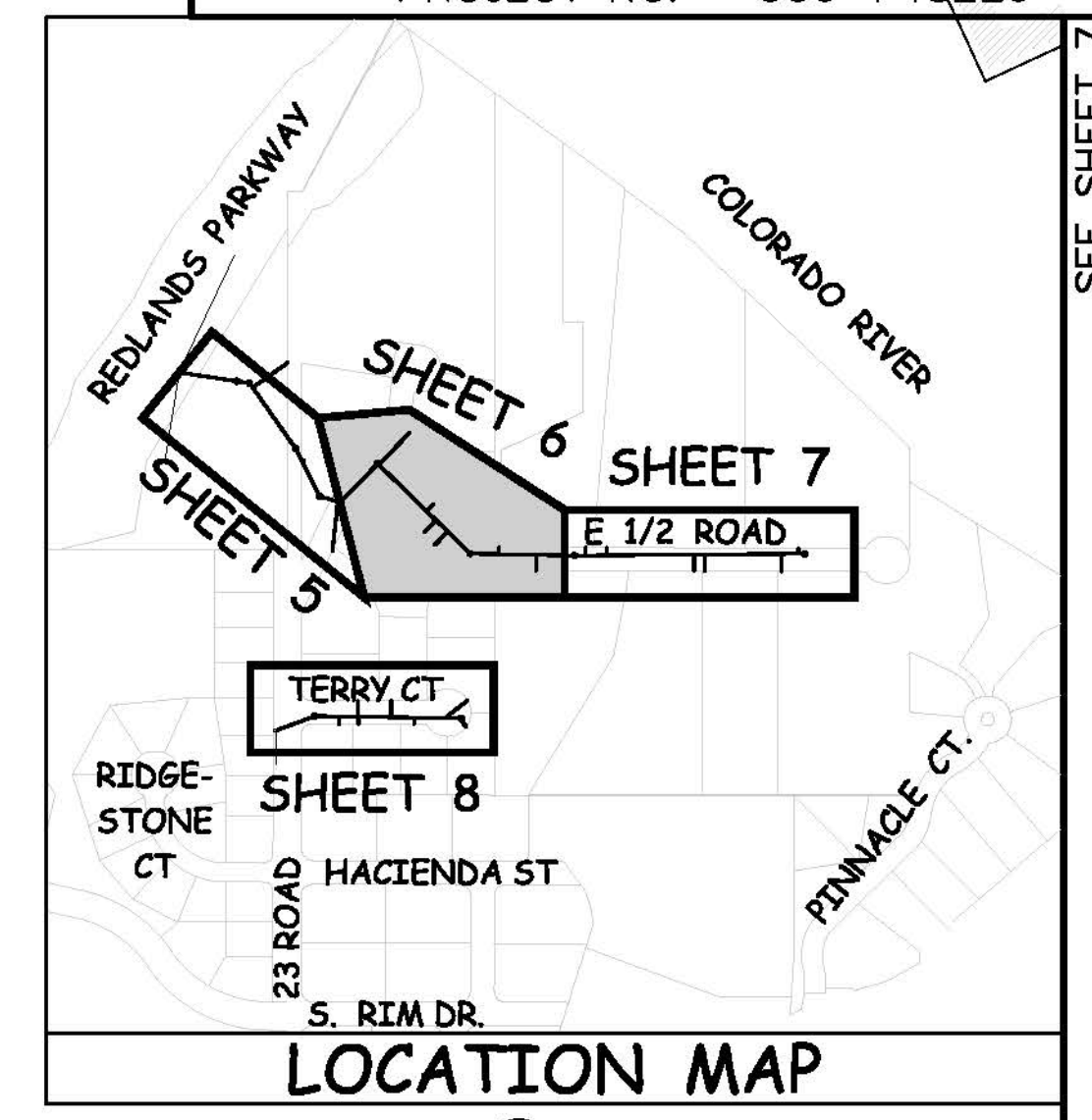
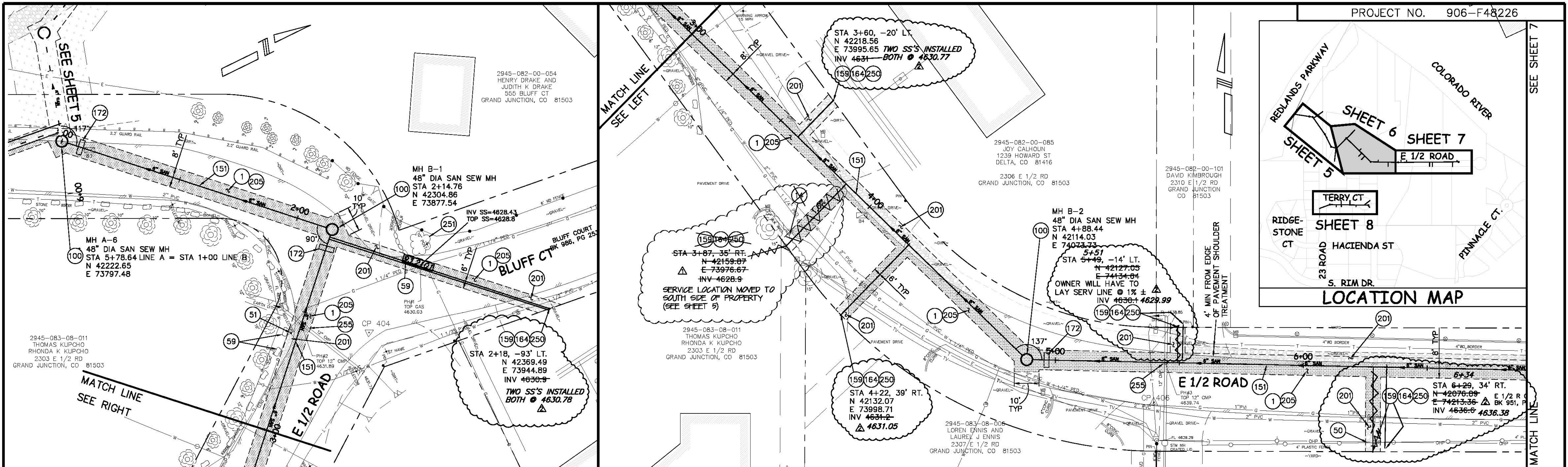
REVISION	DESCRIPTION	DATE	DRAWN BY	DATE
1	AS BUILT	2008-08-11	JCS	2006

DESIGNER	DATE	CHECKED BY	DATE	APPROVED BY	DATE
JCS	2006				



PUBLIC WORKS AND UTILITIES ENGINEERING DIVISION

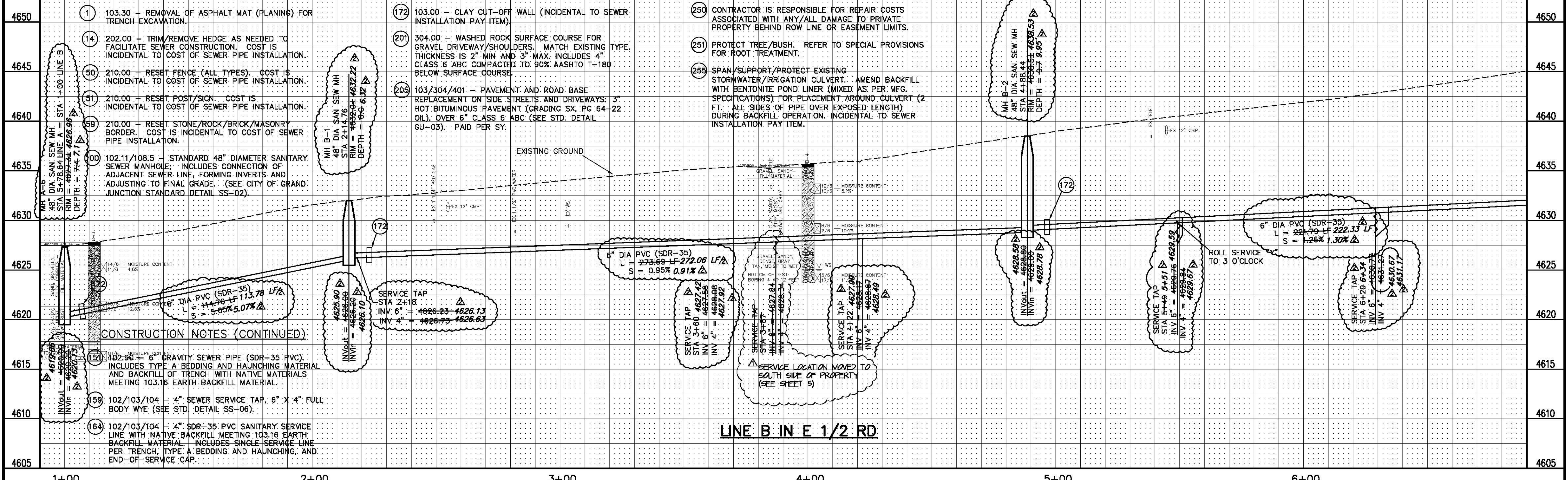
SOUTH & EAST ALONG SERVICE RD FROM REDLANDS PARKWAY ACROSS 551 23 RD AND 555&562 BLUFF CT SANITARY SEWER PLAN AND PROFILE, STA 0+00 TO STA 5+80



CONSTRUCTION NOTES

CONSTRUCTION NOTES (CONTINUED)

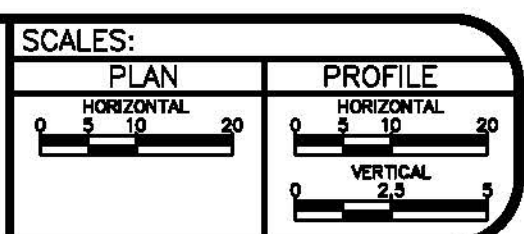
CONSTRUCTION NOTES (CONTINUED)



LINE B IN E 1/2 RD

REVISION	DESCRIPTION	DATE
REVISION Δ	SERVICE LOCATION FOR 2303 E 1/2 ROAD	11-15-06
REVISION Δ	AS BUILT	2008-06-11
REVISION Δ		
REVISION Δ		

DRAWN BY	JCS	DATE	2006
DESIGNED BY		DATE	
CHECKED BY		DATE	
APPROVED BY		DATE	



PUBLIC WORKS AND UTILITIES ENGINEERING DIVISION

E 1/2 ROAD FROM 150' WEST OF BLUFF CT. TO 475' EAST OF BLUFF CT., SANITARY SEWER PLAN AND PROFILES STA 0+00 TO STA 6+90

N:\Land\Proj\148226 (The Bluffs STD)\DWG\BASE-F48226.dwg, 6 - LINE B - E 1/2 RD - 6/11/2008 6:35:51 AM

SEE SHEET 6

MATCH LINE

4660

4655

4650

4645

4640

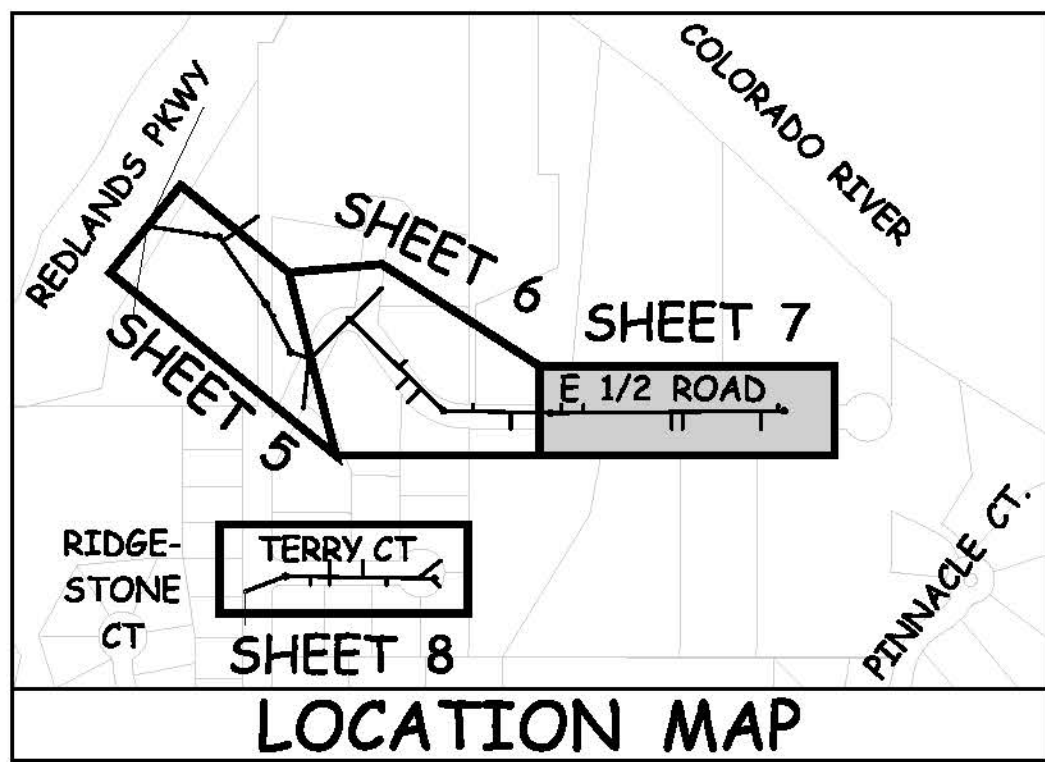
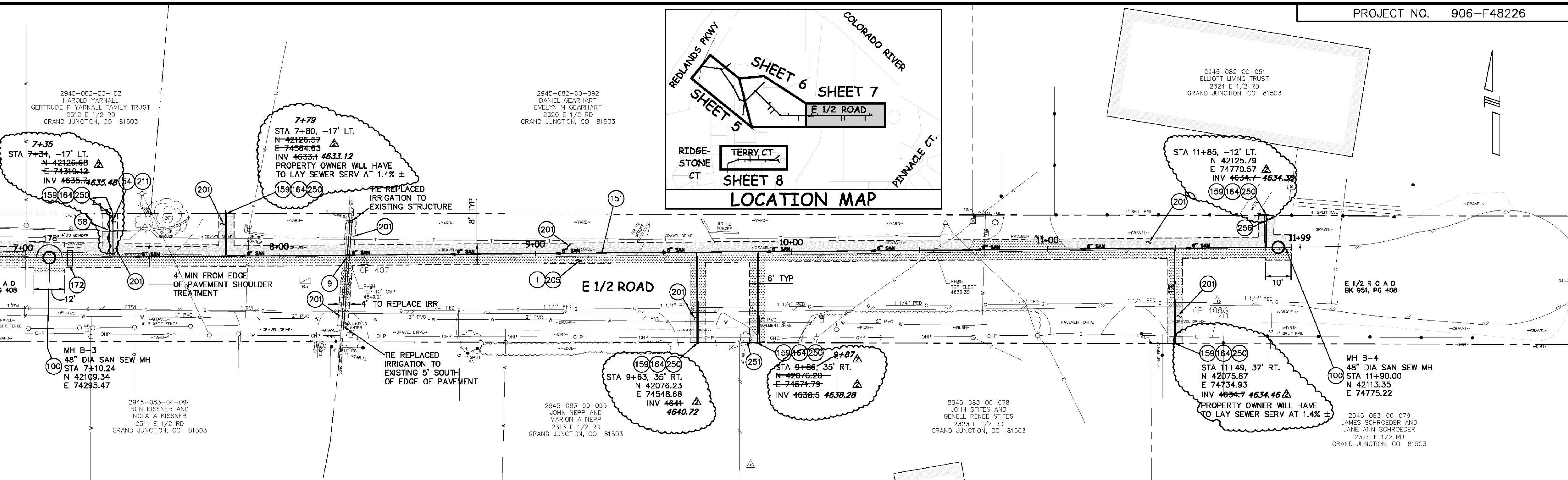
4635

4630

4625

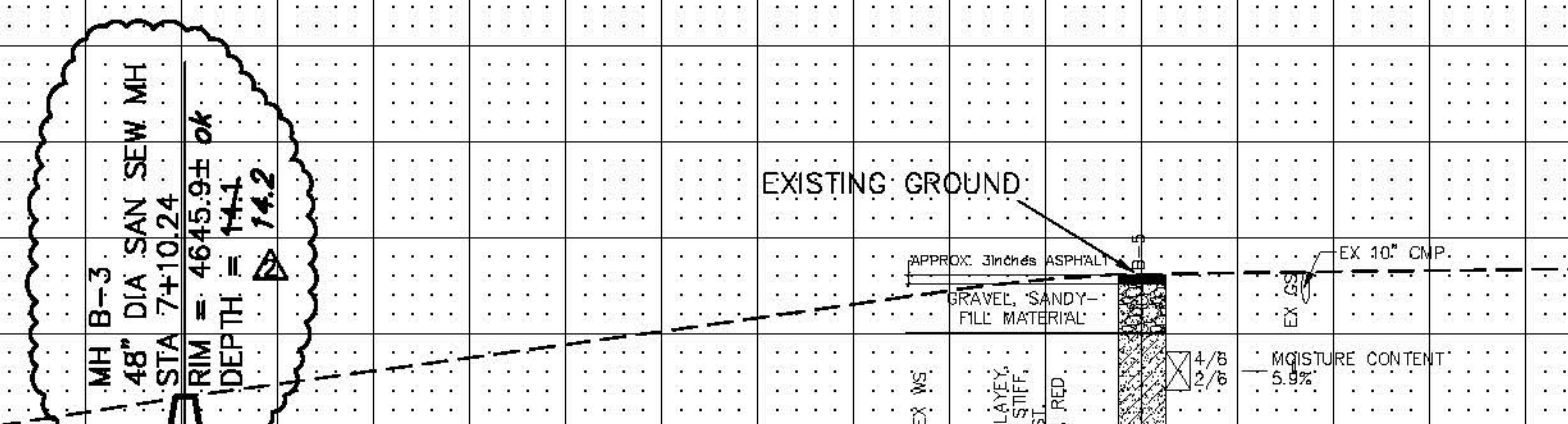
4620

4615



CONSTRUCTION NOTES

- (1) 103.30 - REMOVAL OF ASPHALT MAT (PLANING) FOR TRENCH EXCAVATION.
- (9) 104.00 - REMOVE EXISTING PIPE AND REPLACE WITH 10" DR14 C900 CLASS 200 AS SHOWN. PAY ITEM INCLUDES COST OF CONNECTING BACK TO EXISTING STRUCTURES/PIPE AT EITHER END AND ALL NECESSARY FITTINGS REQUIRED.
- (54) 210.00 - RESET IRRIGATION SYSTEM COMPONENTS (PER EACH PROPERTY).
- (58) 210.00 - RESET WOOD BORDER. COST IS INCIDENTAL TO COST OF SEWER PIPE INSTALLATION.
- (100) 102.11/108.5 - STANDARD 48" DIAMETER SANITARY SEWER MANHOLE; INCLUDES CONNECTION OF ADJACENT SEWER LINE, FORMING INVERTS AND ADJUSTING TO FINAL GRADE. (SEE CITY OF GRAND JUNCTION STANDARD DETAIL SS-02).
- (151) 102.90 - 6" GRAVITY SEWER PIPE (SDR-35 PVC). INCLUDES TYPE A BEDDING AND HAUNCHING MATERIAL AND BACKFILL OF TRENCH WITH NATIVE MATERIALS MEETING 103.16 EARTH BACKFILL MATERIAL.
- (159) 102/103/104 - 4" SEWER SERVICE TAP, 6" X 4" FULL BODY WYE (SEE STD. DETAIL SS-06).
- (164) 102/103/104 - 4" SDR-35 PVC SANITARY SERVICE LINE WITH NATIVE BACKFILL MEETING 103.16 EARTH BACKFILL MATERIAL. INCLUDES SINGLE SERVICE LINE PER TRENCH, TYPE A BEDDING AND HAUNCHING, AND END-OF-SERVICE CAP.
- (172) 103.00 - CLAY CUT-OFF WALL (INCIDENTAL TO SEWER INSTALLATION PAY ITEM).
- (201) 304.00 - WASHED ROCK SURFACE COURSE FOR GRAVEL DRIVEWAY/SHOULDERS. MATCH EXISTING TYPE. THICKNESS IS 2" MIN AND 3" MAX INCLUDES 4" CLASS 6 ABC COMPACTED TO 90% AASHTO T-180 BELOW SURFACE COURSE.
- (205) 103/304/401 - PAVEMENT AND ROAD BASE REPLACEMENT ON SIDE STREETS AND DRIVEWAYS: 3" HOT BITUMINOUS PAVEMENT (GRADING SX, PG 64-22 OIL), OVER 6" CLASS 6 ABC (SEE STD. DETAIL GU-03) PAID PER SY.
- (211) 212 - SOD.
- (250) CONTRACTOR IS RESPONSIBLE FOR REPAIR COSTS ASSOCIATED WITH ANY/ALL DAMAGE TO PRIVATE PROPERTY BEHIND ROW LINE OR EASEMENT LIMITS.
- (251) PROTECT TREE/BUSH. REFER TO SPECIAL PROVISIONS FOR ROOT TREATMENT.
- (255) SPAN/SUPPORT/PROTECT EXISTING STORMWATER/IRRIGATION CULVERT. AMEND BACKFILL WITH BENTONITE POND LINER (MIXED AS PER MFG. SPECIFICATIONS) FOR PLACEMENT AROUND CULVERT (2FT ALL SIDES OF PIPE OVER EXPOSED LENGTH) DURING BACKFILL OPERATION. INCIDENTAL TO SEWER INSTALLATION PAY ITEM.
- (256) PROTECT EXISTING FENCE.

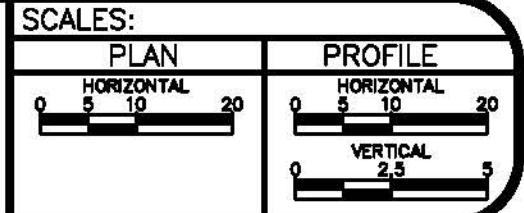


LINE B IN E 1/2 RD

7+00 8+00 9+00 10+00 11+00 12+00

REVISION	DESCRIPTION	DATE	DRAWN BY	DATE
AS BUILT		2008-08-11	JCS	2006
Δ				
Δ				
Δ				

DESIGNED BY	DATE	CHECKED BY	DATE	APPROVED BY	DATE



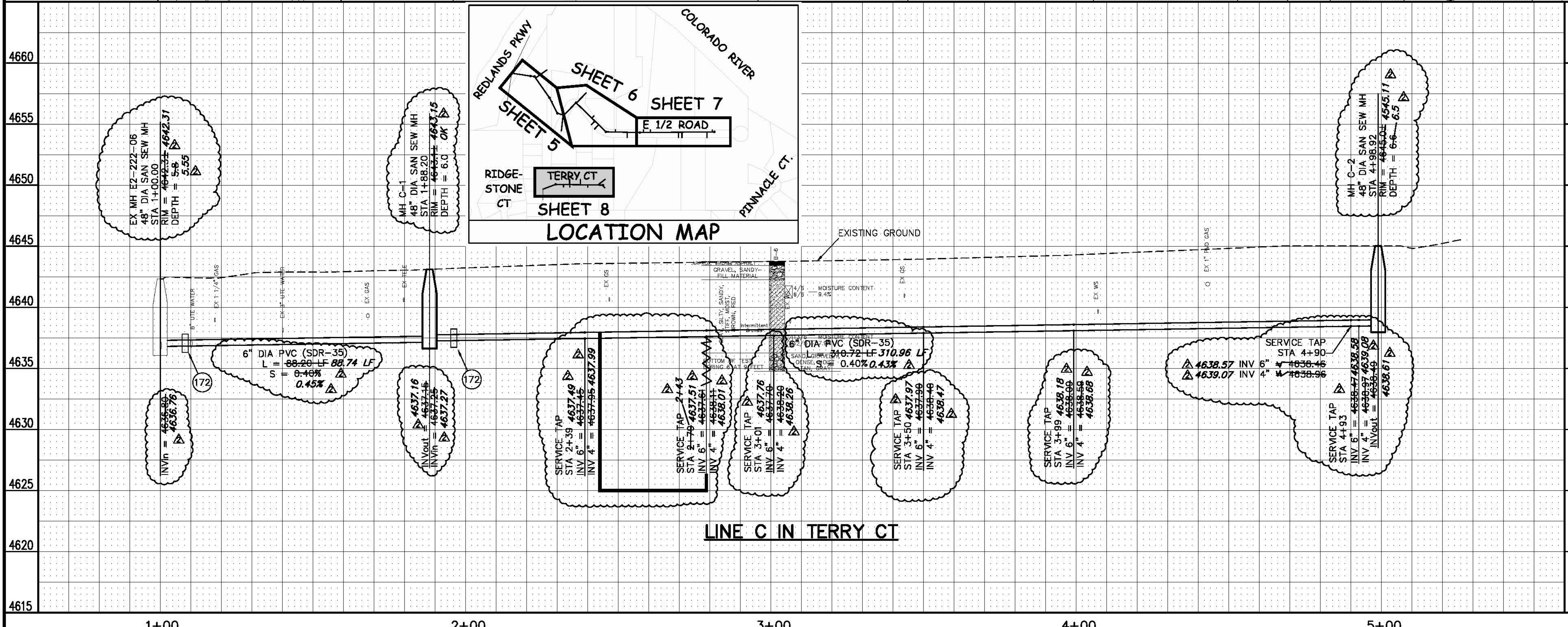
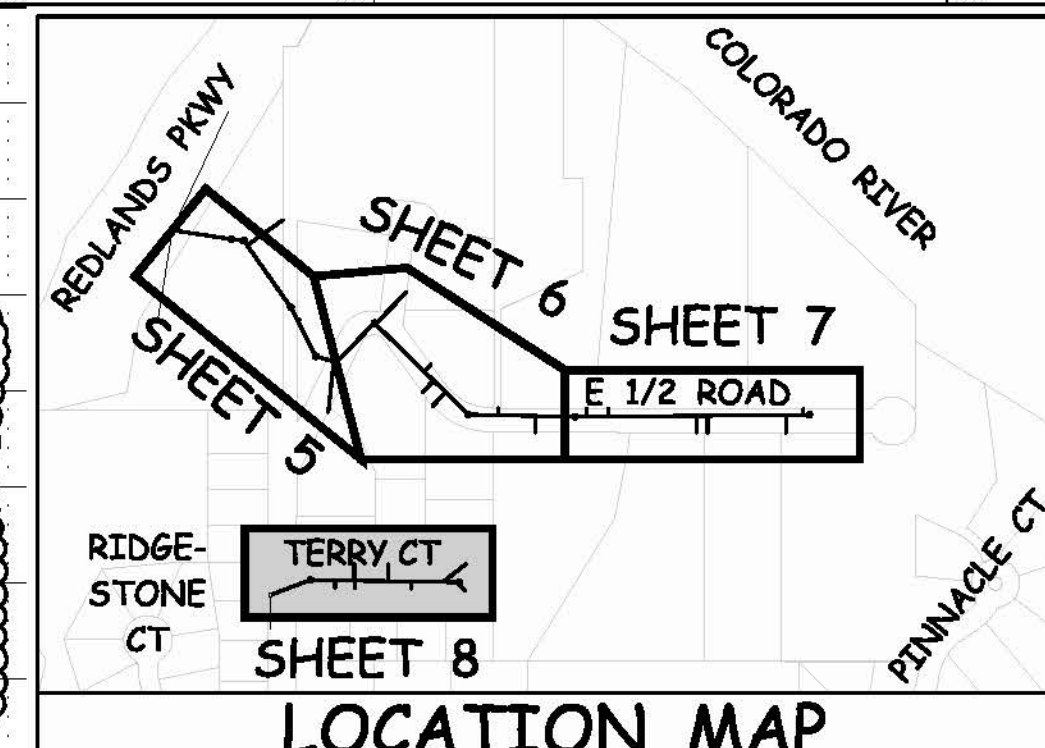
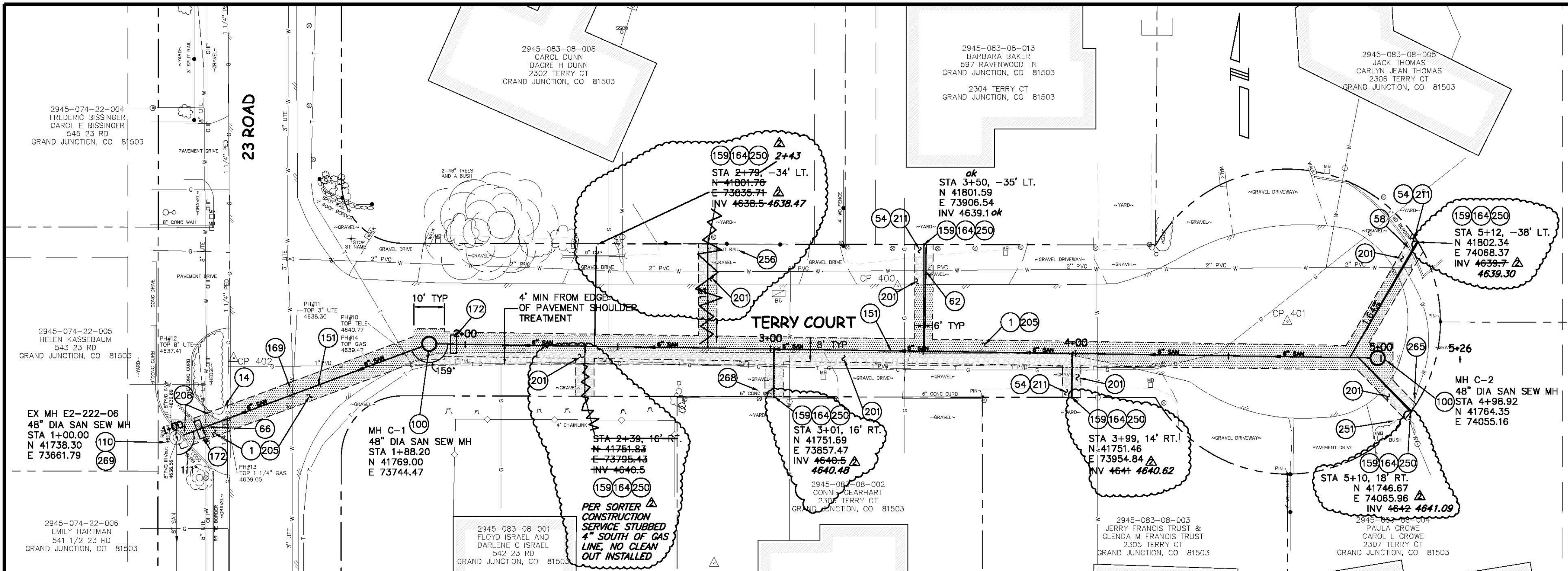
PUBLIC WORKS AND UTILITIES ENGINEERING DIVISION

E 1/2 ROAD FROM 475' EAST OF BLUFF CT TO END OF E 1/2 RD., SANITARY SEWER PLAN AND PROFILES STA 6+90 TO STA 12+00

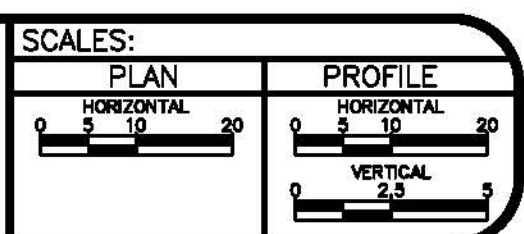
N:\Land\Proj\148226 (The Bluffs STD)\DWG\BASE-F48226.dwg, 7 - LINE B - ED RD. 6/11/2008 6:36:43 AM

CONSTRUCTION NOTES

- 1 103.30 - REMOVAL OF ASPHALT MAT (PLANING) FOR TRENCH EXCAVATION.
- 14 202.00 - TRIM/REMOVE HEDGE AS NEEDED TO FACILITATE SEWER CONSTRUCTION. COST IS INCIDENTAL TO COST OF SEWER PIPE INSTALLATION.
- 54 210.00 - RESET IRRIGATION SYSTEM COMPONENTS (PER EACH PROPERTY).
- 58 210.00 - RESET WOOD BORDER. COST IS INCIDENTAL TO COST OF SEWER PIPE INSTALLATION.
- 62 104.00 - VERTICAL RELOCATION OF EXISTING 2" PVC WATERLINE PER STD DETAILS W-07, W-08, W-12. RELOCATED PORTION OF WATERLINE SHALL BE C-900, CLASS 150, DR-18, PVC AND FITTINGS SHALL BE DIP 45 DEGREE BENDS. LOWER WATERLINE TO PROVIDE A MINIMUM SEPARATION OF 2 FEET BETWEEN SEWER AND WATER. ALL JOINTS SHALL BE RESTRAINED. SWAB AND SPRAY DISINFECT. NOTIFY UTE WATER 3 DAYS PRIOR TO WORK. ALL WORK NECESSARY TO COMPLETE THE LOWERING SHALL BE PAID UNDER THE "VERTICAL RELOCATION OF EXISTING WATERLINE (2"PVC)" PAY ITEM.
- 66 104.00 - VERTICAL RELOCATION OF EXISTING 8" UTE WATERLINE PER STD DETAILS W-07, W-08, W-12. RELOCATED PORTION OF WATERLINE SHALL BE C-900, CLASS 150, DR-18, PVC AND FITTINGS SHALL BE DIP 45 DEGREE BENDS. LOWER WATERLINE TO PROVIDE A MINIMUM SEPARATION OF 2 FEET BETWEEN SEWER AND WATER. ALL JOINTS SHALL BE RESTRAINED. SWAB AND SPRAY DISINFECT. NOTIFY UTE WATER 3 DAYS PRIOR TO WORK. ALL WORK NECESSARY TO COMPLETE THE LOWERING SHALL BE PAID UNDER THE "VERTICAL RELOCATION OF EXISTING WATERLINE (8"UTE)" PAY ITEM.
- 100 102.11/108.5 - STANDARD 48" DIAMETER SANITARY SEWER MANHOLE; INCLUDES CONNECTION OF ADJACENT SEWER LINE, FORMING INVERTS AND ADJUSTING TO FINAL GRADE. (SEE CITY OF GRAND JUNCTION STANDARD DETAIL SS-02).
- 110 102.11 - CONNECT TO EXISTING MANHOLE AS PER STD. DETAIL SS-04, SS-08.
- 151 102.90 - 6" GRAVITY SEWER PIPE (SDR-35 PVC). INCLUDES TYPE A BEDDING AND HAUNCHING MATERIAL AND BACKFILL OF TRENCH WITH NATIVE MATERIALS MEETING 103.16 EARTH BACKFILL MATERIAL.
- 159 102/103/104 - 4" SEWER SERVICE TAP, 6" x 4" FULL BODY WYE (SEE STD. DETAIL SS-06).
- 164 102/103/104 - 4" SDR-35 PVC SANITARY SERVICE LINE WITH NATIVE BACKFILL MEETING 103.16 EARTH BACKFILL MATERIAL. INCLUDES SINGLE SERVICE LINE PER TRENCH, TYPE A BEDDING AND HAUNCHING, AND END-OF-SERVICE CAP.
- 169 104.40 - CAP TOP HALF OF SEWER IN CONCRETE PER STD. DETAIL GU-04.
- 172 103.00 - CLAY CUT-OFF WALL (INCIDENTAL TO SEWER INSTALLATION PAY ITEM).
- 201 304.00 - WASHED ROCK SURFACE COURSE FOR GRAVEL DRIVEWAY/SHOULDERS. MATCH EXISTING TYPE. THICKNESS IS 2" MIN AND 3" MAX. INCLUDES 4" CLASS 6 ABC COMPACTED TO 90% AASHTO T-180 BELOW SURFACE COURSE.
- 205 103/304/401 - PAVEMENT AND ROAD BASE REPLACEMENT ON SIDE STREETS AND DRIVEWAYS: 3" HOT BITUMINOUS PAVEMENT (GRADING SX, PG 64-22 OIL), OVER 6" CLASS 6 ABC (SEE STD. DETAIL GU-03). PAID PER SY.
- 208 202.00/808.00 - REMOVE AND REPLACE CONCRETE OR ASPHALT CURB AND GUTTER/CURBING/GUTTER/BORDER. SIZE AND STYLE VARY. MATCH EXISTING.
- 211 212 - SOD.
- 250 CONTRACTOR IS RESPONSIBLE FOR REPAIR COSTS ASSOCIATED WITH ANY/ALL DAMAGE TO PRIVATE PROPERTY BEHIND ROW LINE OR EASEMENT LIMITS.
- 251 PROTECT TREE/BUSH. REFER TO SPECIAL PROVISIONS FOR ROOT TREATMENT.
- 256 PROTECT EXISTING FENCE.
- 265 SEWER SERVICE LINE SHALL BE INSTALLED OVER THE EXISTING UTE WATER LINE AT THIS LOCATION.
- 268 PROTECT IN PLACE LANDSCAPE BORDER, CURBING, ETC. AS SHOWN.
- 269 REMOVE 8" STUB NORTH, PLUG INVERT IN NORTH WITH CONCRETE, AND FORM NEW INVERT IN EXISTING MANHOLE. COST IS INCIDENTAL TO COST OF CONNECTION TO EXISTING MANHOLE.



REVISION Δ AS BUILT	DATE 2008-08-11	DRAWN BY JCS	DATE 2006
REVISION Δ		DESIGNED BY	DATE
REVISION Δ		CHECKED BY	DATE
REVISION Δ		APPROVED BY	DATE



PUBLIC WORKS AND UTILITIES ENGINEERING DIVISION

TERRY COURT, FROM 23 RD EAST TO THE END
SANITARY SEWER PLAN AND PROFILES
STA 0+00 TO STA 5+80

N:\Land\proj\1\F48226 (The Bluffs STD)\DWG\BASE-F48226.dwg, 8 LINE C - TERRY CT, 6/11/2008 6:37:13 AM