

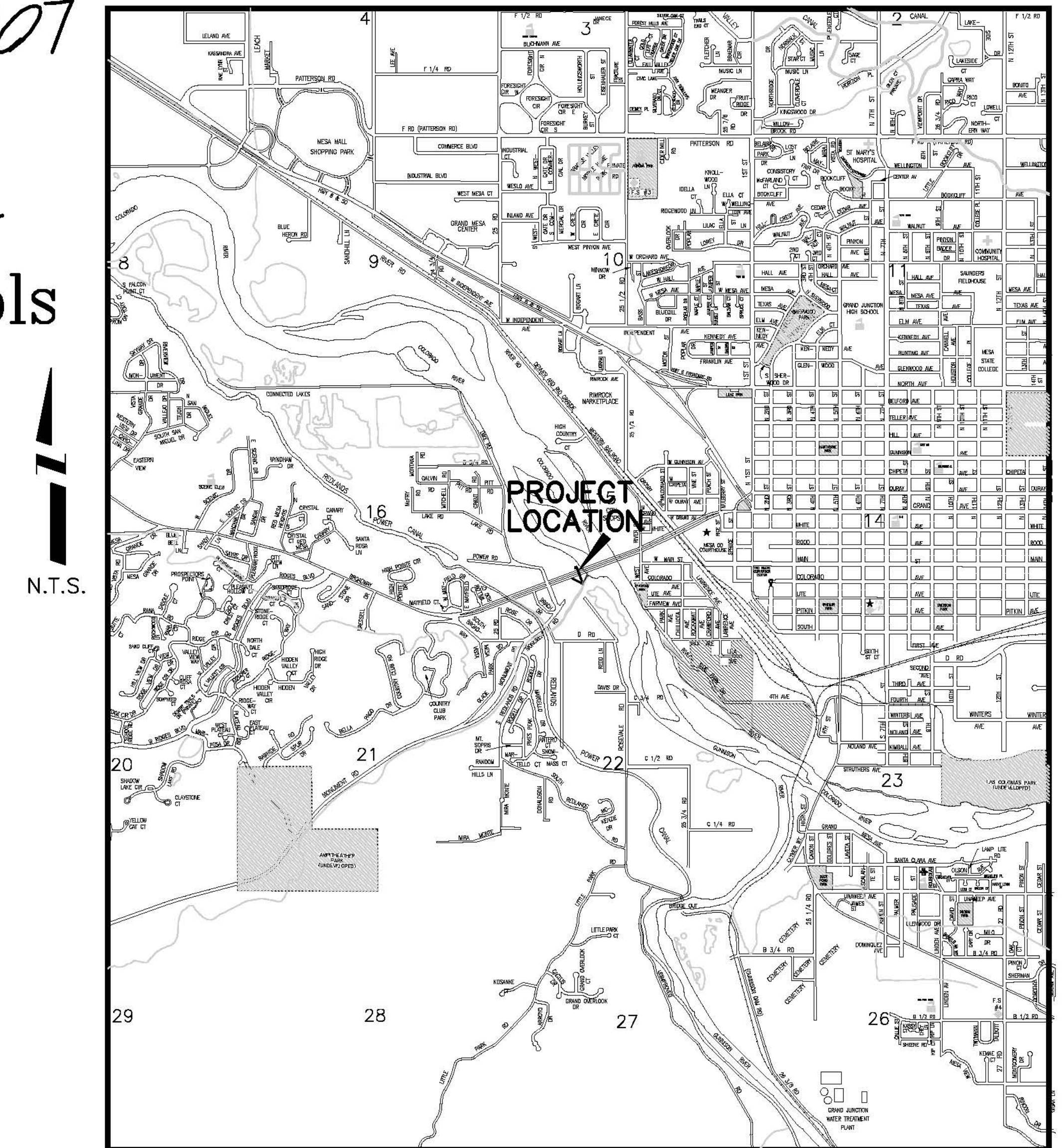
# PEPSI LIFT STATION ELIMINATION AND HIGHWAY 340 BORE NOVEMBER 17, 2006

*As Built July 17, 2007*

*Contractor:  
Brannan Const. Co.*

- 1 ————— Cover Sheet
- 2 ————— Standard Abbreviations, Legend, and Symbols
- 3 ————— Summary of Approximate Quantities
- 4 ————— Project Control Map
- 5 ————— Sanitary Sewer Plan and Profile
- 6 ————— Lift Station Details

VICINITY MAP



N.T.S.

UTILITIES AND AGENCIES								
AGENCY	NAME	POSITION	ROLE	MAILING ADDRESS	STREET ADDRESS	CITY, STATE	VOICE-WK	FAX
GRAND JUNCTION, CITY OF	MIKE CURTIS	PROJECT ENGINEER	PROJECT ENGINEER	250 N. 5th STREET	250 N. 5th STREET	GRAND JCT., CO 81501	(970) 256-4004	(970) 256-4022
GRAND JUNCTION, CITY OF	BRET GUILLORY	UTILITY ENGINEER	SANITARY SEWER	250 N. 5th STREET	250 N. 5th STREET	GRAND JCT., CO 81501	(970) 244-1590	(970) 256-4022
GRAND VALLEY IRRIGATION CO.	PHIL BERTRAND		IRRIGATION	688 26 ROAD	688 26 ROAD	GRAND JCT., CO 81506	(970) 242-2762	
BRESNAN	SCOTT WRIGHT		CABLE TV	2502 FORESIGHT CIRCLE	2502 FORESIGHT CIRCLE	GRAND JCT., CO 81504	(970) 245-8750	(970) 245-6803
U.S. WEST/QWEST	CHRIS JOHNSON	ENGINEER	TELEPHONE	2524 BLICHMANN AVE	2524 BLICHMANN AVE	GRAND JCT., CO 81504	(970) 244-4311	(970) 240-4349
LTE WATER	DARYL MOORE	ENGINEER	WATER	PO BOX 460		GRAND JCT., CO 81502	(970) 242-7491	(970) 242-9189
XCEL	DANNY MOORE	UNIT MANAGER	GAS	2538 BLICHMANN AVE	2538 BLICHMANN AVE	GRAND JCT., CO 81504	(970) 244-2690	(970) 244-2661
XCEL	STEVE LOPEZ	UNIT MANAGER	ELECTRIC	2538 BLICHMANN AVE	2538 BLICHMANN AVE	GRAND JCT., CO 81504	(970) 244-2664	(970) 244-2661



*Public Works & Utilities  
Engineering Division*

NOTE: NOTIFY AFFECTED UTILITY VENDOR 48 HOURS PRIOR TO EXCAVATIONS THAT WILL EXPOSE UTILITY LINES. THE COVER SHEET WILL HAVE A LISTING OF UTILITY VENDORS AND TELEPHONE NUMBERS.

REVISION	DESCRIPTION	DATE
REVISION ▲	_____	_____
REVISION ▲	_____	_____
REVISION ▲	_____	_____
REVISION ▲	_____	_____

DRAWING STATUS:	
<input type="radio"/>	FINAL CONSTRUCTION DRAWINGS
<input checked="" type="radio"/>	ASBUILT
DESIGNED BY:	
MIKE CURTIS, PROJECT ENGINEER	DATE _____
REVIEWED BY:	
BRET GUILLORY, UTILITY ENGINEER	DATE _____
AUTHORIZED FOR CONSTRUCTION	
TRENTON C. PRALL, CITY ENGINEER	DATE _____
ACCEPTED AS CONSTRUCTED	
MIKE CURTIS, PROJECT ENGINEER	DATE _____

PEPSI LIFT STATION ELIMINATION & HWY 340 BORE, July 17, 2007, As Built

02112500.PDF

**ABBREVIATIONS**

AASTHO	AMERICAN ASSOCIATION OF STATE HIGHWAY & TRANSPORTATION OFFICIALS
ABC	AGGREGATE BASE COURSE
AC	ASBESTOS CEMENT
AP	ANGLE POINT
ASB	ANGLED STRAW BALES
ASP	ALUMINIZED STEEL PIPE
ASTM	AMERICAN SOCIETY FOR TESTING MATERIALS
AWWA	AMERICAN WATER WORKS ASSOCIATION
BC	BACK OF CURB
BF	BUTTERFLY VALVE
BOW	BACK OF WALK
BCR	BEGIN CURB RETURN
BOT	BOTTOM
BSWMP	BETTER STORM WATER MANAGEMENT PRACTICES
CH	CHORD
CAP	CORRUGATED ALUMINUM PIPE
CDOT	COLORADO DEPARTMENT OF TRANSPORTATION
CI	CAST IRON
C,G,& SW	CURB, GUTTER & SIDEWALK
CL	CENTER LINE
CL	CLEAR
CMP	CORRUGATED METAL PIPE
CO	CLEAN OUT
COMB	COMBINATION (AS IN STORM SEWER AND SANITARY SEWER)
CONC	CONCRETE
CSM	CITY SURVEY MONUMENT
CSP	CORRUGATED STEEL PIPE
CJ	COPPER
DI	DUCTILE IRON
DWY	DRIVEWAY
E	ELECTRIC
ECR	END CURB RETURN
EG	EDGE OF GUTTER
EL	ELEVATION
EP	EDGE OF PAVEMENT
EX	EXISTING
FB	FULL BODY
FC	FACE OF CURB
FG	FINISHED GRADE
FL	FLOW LINE
FL	FLANGE
FM	FORCE MAIN
FO	FIBER OPTICS
FS	FAR SIDE
FTG	FOOTING
G	GAS
GB	GRADE BREAK
GM	GAS METER
GV	GATE VALVE
HBP	HOT BITUMINOUS PAVEMENT
HDPE	HIGH DENSITY POLYETHYLENE
INV	INVERT
IRR	IRRIGATION
L	LENGTH OF ARC
LC	LONG CHORD
LF	LINEAR FEET
LL	LONG ARC
LS	SHORT ARC
LT	LEFT
MB	MAILBOX
MCSM	MESA COUNTY SURVEY MONUMENT
MH	MANHOLE
MJ	MECHANICAL JOINT
MW	MILL WRAP
N/A	NOT APPLICABLE
NIC	NOT IN CONTRACT
NOP	NO ONE PERSON
NRCP	NON-REINFORCED CONCRETE PIPE
NS	NEAR SIDE
NTS	NOT TO SCALE
OHP	OVERHEAD POWER
OHT	OVERHEAD TELEPHONE
PC	POINT OF CURVATURE
PCC	POINT OF COMPOUND CURVATURE
PE	POLYETHYLENE
PERF	PERFORATED
PI	POINT OF INTERSECTION
PIP	PLASTIC IRRIGATION PIPE
POC	POINT ON CURVE
POT	POINT ON TANGENT
PR	PROPOSED
PRC	POINT OF REVERSE CURVATURE
PT	POINT OF TANGENCY
PVC	POLYVINYL CHLORIDE
R	RADIUS
RCP	REINFORCED CONCRETE PIPE
REQ'D	REQUIRED
RG	RESTRAINED GLANDS
RL	LONG RADIUS
ROW	RIGHT OF WAY
RP	RADIUS POINT
RR	RAIL ROAD
RS	SHORT RADIUS
RT	RIGHT
S	SLOPE
SAN	SANITARY
SC	SHORT CHORD
SCD	STANDARD CONTRACT DOCUMENTS
SCH	SCHEDULE
SF	SILT FENCE
SL	SECTION LINE
SSRB	STANDARD SPECIFICATIONS FOR ROAD & BRIDGE CONSTRUCTION
SSUU	STANDARD SPECIFICATIONS FOR CONSTRUCTION OF UNDERGROUND UTILITIES
STA	STATION
STL	STEEL
STM	STORM
T	TELEPHONE
TAN	LENGTH OF TANGENT
TC	TOP OF CURB
TH	TEST HOLE
TV	TELEVISION
(TYP)	TYPICAL
UU	UNDERGROUND UTILITIES
VC	VERTICAL CURVE
VCP	VITRIFIED CLAY PIPE
VPC	VERTICAL POINT OF CURVATURE
VPCC	VERTICAL POINT OF COMPOUND CURVATURE
VPRC	VERTICAL POINT OF REVERSE CURVATURE
VPI	VERTICAL POINT OF INTERSECTION
VPT	VERTICAL POINT OF TANGENCY
W	WATER
Δ	DELTA ANGLE

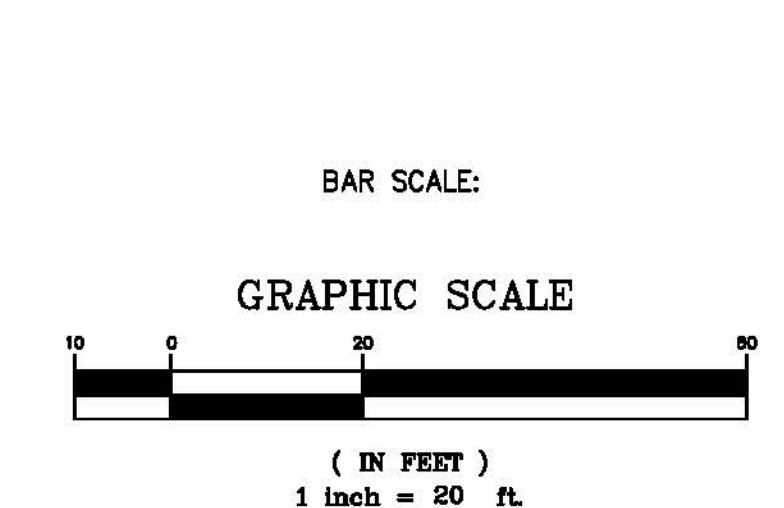
**LEGEND**

BSWMP DRAINAGE BASIN BOUNDARY	
BSWMP ANCHORED STRAW BALES	
BSWMP SILT FENCE	
BUILDING	
CONCRETE CURB AND GUTTER	
CONCRETE CURB, GUTTER, & SIDEWALK	
CONCRETE DITCH	
CONCRETE SIDEWALK	
CULVERT	
EARTH DITCH	
EDGE OF GRAVEL	
EDGE OF PAVEMENT	
FENCE (BARBED WIRE)	
FENCE (CHAIN LINK)	
FENCE (IRON)	
FENCE (PLASTIC)	
FENCE (TEMPORARY CONSTRUCTION)	
FENCE (WOOD)	
FENCE (WOVEN WIRE)	
GUARD RAIL	
HATCHING: INDICATES ASPHALT REMOVAL	
HATCHING: INDICATES CONCRETE REMOVAL	
HATCHING: INDICATES STAGING AREA	
LINE (CENTER OF IMPROVEMENTS)	
LINE (CITY LIMITS)	
LINE (CONTROL)	
LINE (EASEMENT)	
LINE (MONUMENT/SECTION)	
LINE (PROPERTY)	
LINE (RIGHT OF WAY)	
MATCH LINE	
PIPE (IRRIGATION)	
PIPE (SIPHON)	

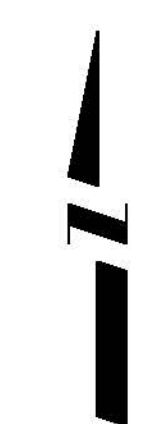
PROPOSED CONCRETE CURB AND GUTTER	
PROPOSED CONCRETE CURB, GUTTER, & SIDEWALK	
PROPOSED CONCRETE SIDEWALK	
PROPOSED "WET" UTILITIES (CONSTRUCTION NOTE WILL INDICATE TYPE, SIZE, AND MATERIAL OF NEW MAIN)	
ALL PROPOSED FEATURES NOT SHOWN IN LEGEND WILL BE SHOWN THE SAME AS THEIR EXISTING COUNTERPART, BUT INDICATED BY BOLDER LINETYPE	
RAIL ROAD	
RETAINING WALL	
STRIPING (CONTINUOUS WHITE)	
STRIPING (DASHED WHITE)	
STRIPING (CONTINUOUS YELLOW)	
STRIPING (DASHED YELLOW)	
TOP OF SLOPE	
CONTOUR LINES (SHOWN BETWEEN TOP & TOE)	
TOE OF SLOPE	
TRAFFIC DETECTOR LOOP	
UTILITY LINE (ABANDON) (THIS CASE A WATER LINE)	
UTILITY LINE (CABLE TV)	
UTILITY LINE (ELECTRIC)	
UTILITY LINE (FIBER OPTIC)	
UTILITY LINE (GAS)	
UTILITY LINE (HIGH VOLTAGE OVERHEAD POWER)	
UTILITY LINE (OVERHEAD POWER)	
UTILITY LINE (OVERHEAD TELEPHONE)	
UTILITY LINE (SANITARY SEWER)	
UTILITY LINE (SANITARY SEWER FORCE MAIN)	
UTILITY LINE (SANITARY SEWER SERVICE)	
UTILITY LINE (STORM SEWER)	
UTILITY LINE (STORM SEWER, PERFORATED)	
UTILITY LINE (STORM/SANITARY SEWER SEWER COMBINATION)	
UTILITY LINE (TELEPHONE)	
UTILITY LINE (WATER)	

**SYMBOLS**

BENCH MARK	
CATCH BASIN	
CLEAN OUT	
CURB STOP	
FIRE HYDRANT	
GUY WIRE ANCHOR	
HEADGATE	
IRRIGATION PUMP	
MAILBOX	
MANHOLE (ELECTRIC)	
MANHOLE (GAS)	
MANHOLE (SANITARY/STORM)	
MANHOLE (TELEPHONE)	
MANHOLE (TV)	
MANHOLE (WATER)	
METER (GAS)	
METER (WATER)	
PEDESTAL (TELEPHONE)	
PEDESTAL (TV)	
PROPERTY PIN	
PULL BOX	
REDUCER FITTING	
SIGN OR POST (SIGN TYPE NOTED)	
SPRINKLER HEAD	
STREET LIGHT	
SURVEY MONUMENT (CITY)	
SURVEY MONUMENT (TYPE NOTED)	
TEST HOLE	
TRAFFIC PAINT MARKING	
TRAFFIC SIGNAL POLE AND MAST ARM	
UTILITY POLE	
VALVE (GAS)	
VALVE (IRRIGATION)	
VALVE (WATER)	
VEGETATION (HEDGE OR BUSH)	
VEGETATION (TREE STUMP)	
VEGETATION (TREE) (CALIPER SIZE NOTED)	
WATER HYDRANT	
WEIR	
YARD LIGHT	



NORTH ARROW:



REVISION	DESCRIPTION	DATE	DRAWN BY	JCS	DATE	4-02
REVISION			DESIGNED BY		DATE	
REVISION			CHECKED BY		DATE	
REVISION			APPROVED BY		DATE	

SCALE	
PLAN	1"=20'
PROFILE	
HORIZ.	
VERT.	



**PUBLIC WORKS AND UTILITIES ENGINEERING DIVISION**

**CITY OF GRAND JUNCTION STANDARD ABBREVIATIONS, LEGEND, AND SYMBOLS SHEET**

N:\Landscape\10231 (ROSEVALE LS ELIMINATION)\dwg\DESIGN-F10231.TN.CIVIL 3D 2006.dwg, 2, 6/24/2008 6:57:50 AM

Item No.	CDOT, City Ref.	Description	Quantity	Units
1	108.2	Imported Trench Backfill (including haul and disposal of unsuitable excavated material).	1,000.	TON
2	108.2	Fly Ash Fill Material.	187.	LF
3	108.2	6" Pressure Sewer Pipe (C-900/RJ, CLASS 150, DR-18, PVC).	578.	LF
4	108.2	8" Gravity Sewer Pipe (SDR 35 PVC).	412.	LF
5	108.2	36" Dia. (minimum) Steel Casing (Roll Plate, 0.375" minimum wall thickness).	187.	LF
6	108.3	6" DIP 45 degree bend.	2.	EA
7	108.3	6" DIP 22 1/2 degree bend.	2.	EA
8	108.3	6" 90 degree bend.	1.	EA
9	108.5	Connect to Existing Rosevale Lift Station 6" pipe).	1.	EA
10	108.5	Connect to Existing Rosevale Wetwell (8" pipe).	1.	EA
11	108.5	Sanitary Sewer Basic Manhole Components (48" I.D.).	2.	EA
12	108.5	Manhole Barrel (D > 5') (48" I.D.).	17.8	LF
13	108.5	Sanitary Sewer Basic Drop Manhole Components (48" I.D.).	1.	EA
14	108.5	Drop Manhole Barrel (D > 5') (48" I.D.).	7.6	LF
15	108.7	Granular Stabilization Material (Type B).	200.	TON
16	201	Clearing and Grubbing.	Lump	Sum
17	202	Abandon Pepsi Lift Station Wetwell Manhole (60" I.D. x 18' deep).	1.	EA
18	202	Remove Pepsi Lift Station Shell.	1.	LS
19	207	Topsoil (6" thick).	150.	CY
20	208	Erosion Control □	Lump	Sum
21	212	Seeding	0.1	AC
22	304	Aggregate Base Course (Class 6)(4" thick).	50.	TON
23	620	Portable Sanitary Facility.	1.	EA
24	625	Construction Surveying.	Lump	Sum
25	626	Mobilization.	Lump	Sum
26	630	Traffic Control (Complete in Place).	Lump	Sum
27	630	Traffic Control Plan.	Lump	Sum
FA		Force Account (minor contract revisions)	---	---

02112503.PDF

REVISION ▲	DESCRIPTION	DATE	DRAWN BY	DATE
REVISION ▲			DESIGNED BY	DATE
REVISION ▲			CHECKED BY	DATE
REVISION ▲			APPROVED BY	DATE

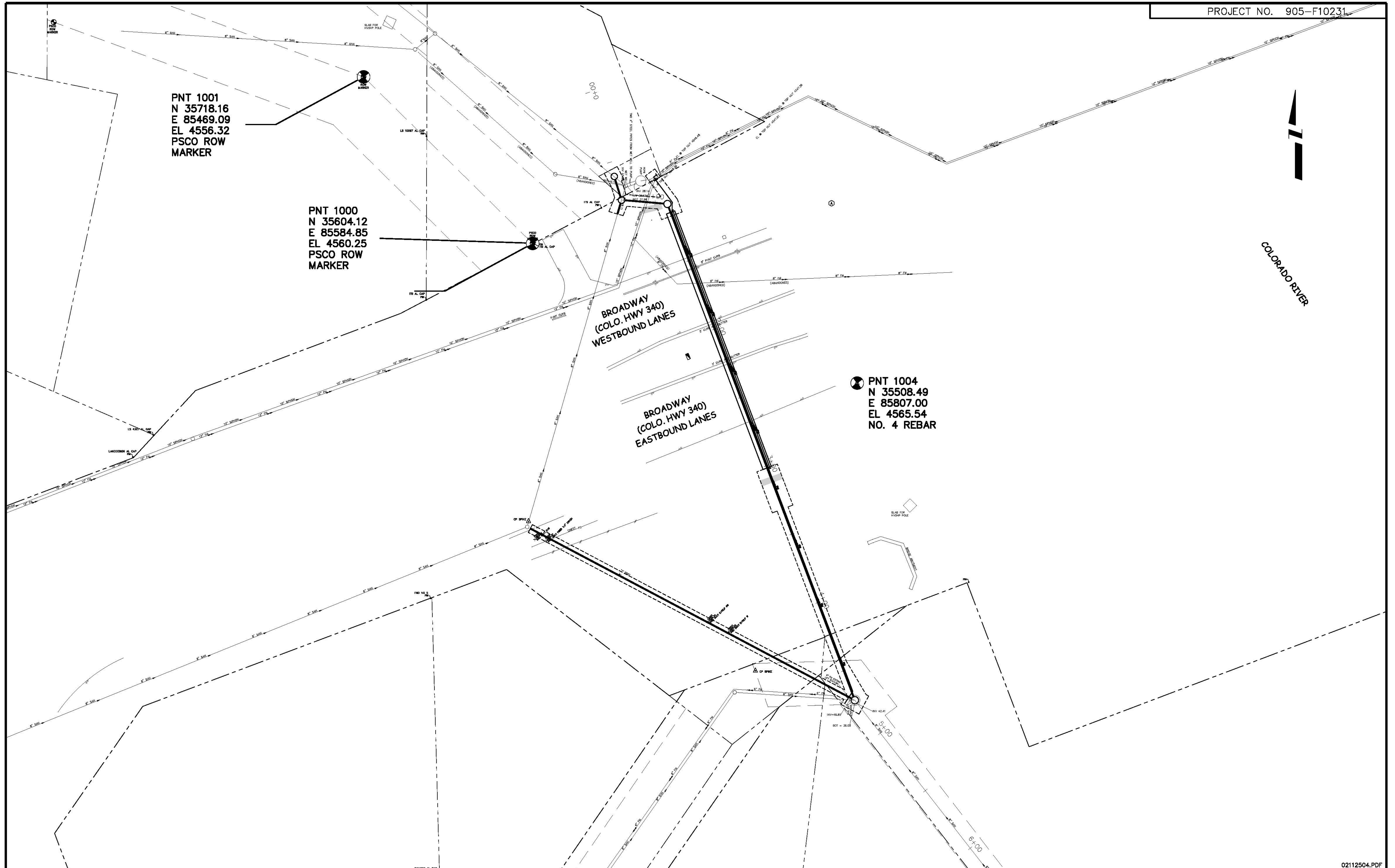
SCALE  
N.T.S.



PUBLIC WORKS  
AND UTILITIES  
ENGINEERING DIVISION

PEPSI LIFT STATION ELIMINATION  
AND HWY 340 BORE  
SUMMARY OF APPROXIMATE QUANTITIES

N:\LandProj\F10231 (ROSEVALE LS ELIMINATION)\dwg\DESIGN\F10231 TN CIVIL 3D 2006.dwg, 3, 6/24/2008 6:59:01 AM



N:\LmpProj\F10231 (ROSEVALE LS ELIMINATION)\dwg\DESIGN-F10231 TN CIVIL 3D 2006.dwg, 4 (project control map), 6/24/2008 6:59:57 AM

REVISION	DESCRIPTION	DATE	DRAWN BY	DATE
REVISION $\Delta$			DESIGNED BY	DATE
REVISION $\Delta$			CHECKED BY	DATE
REVISION $\Delta$			APPROVED BY	DATE

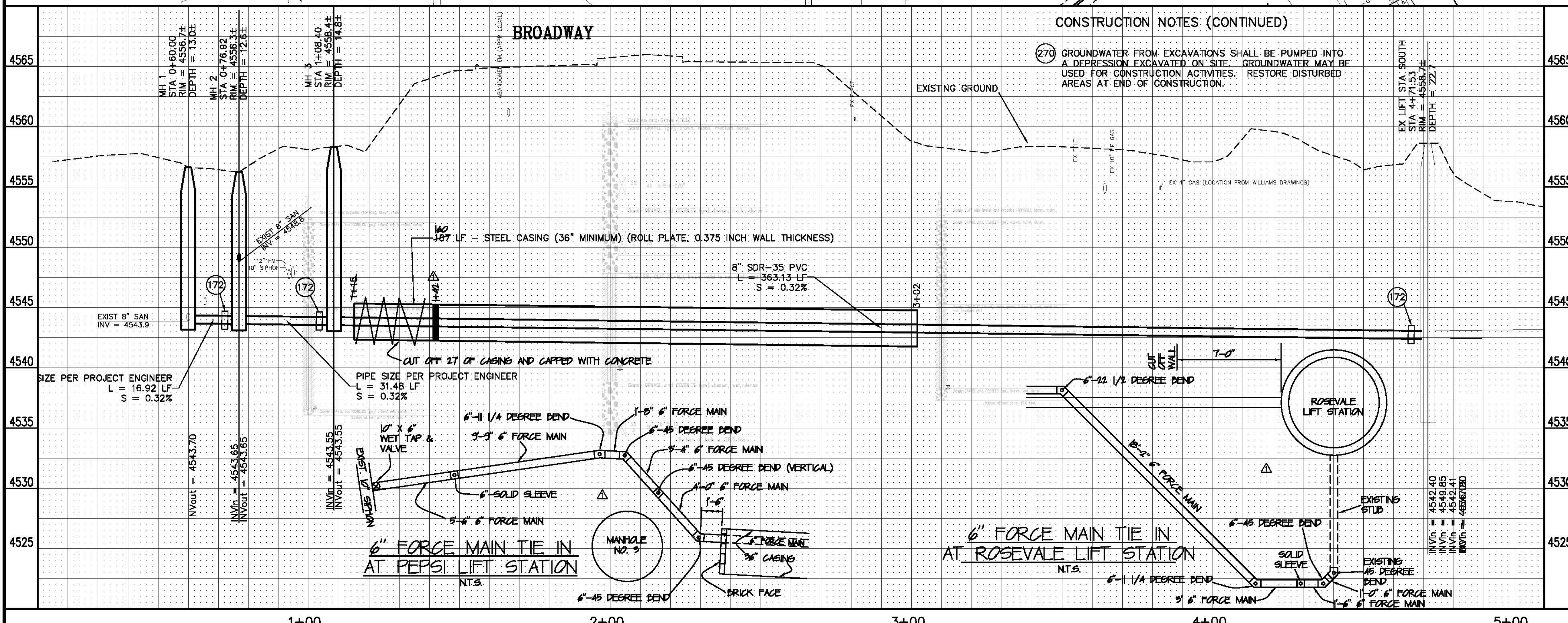
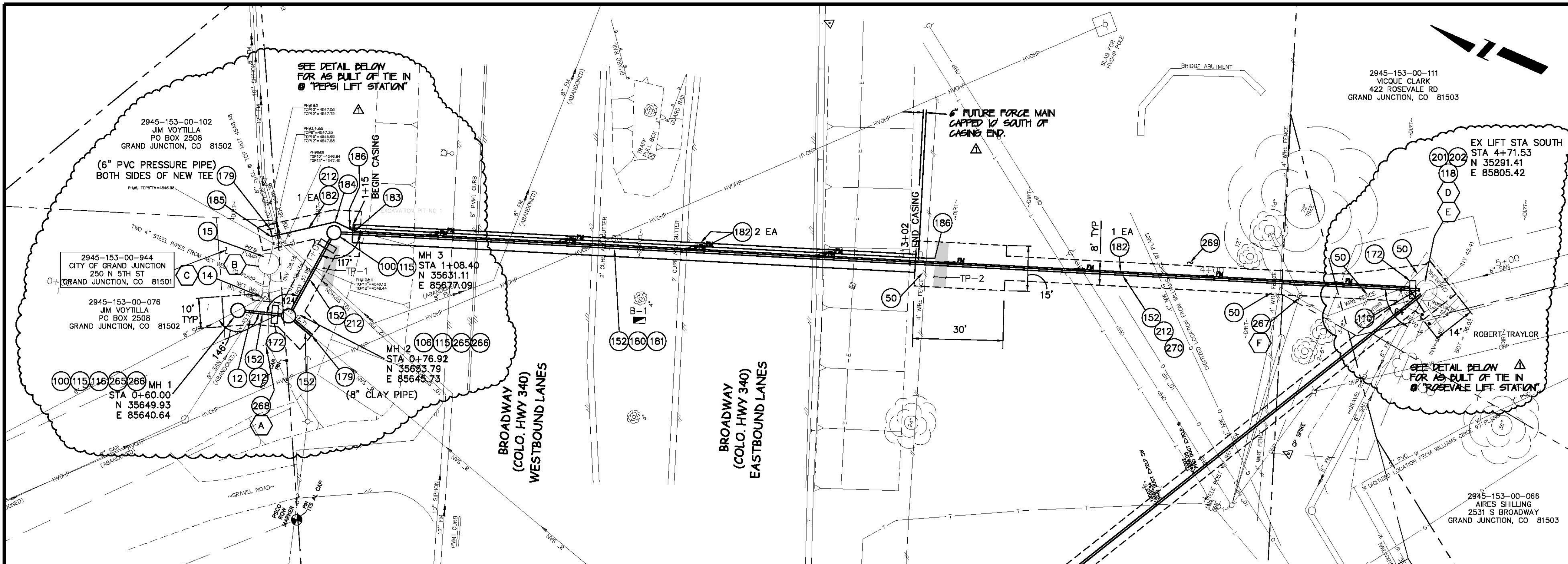
SCALE
1"=30'



**PUBLIC WORKS  
AND UTILITIES  
ENGINEERING DIVISION**

**PEPSI LIFT STATION ELIMINATION  
AND HWY 340 BORE  
PROJECT CONTROL MAP**

- (X) INDICATES PHOTO LOCATION (SEE SHEET 6)
- (12) 202.00 - REMOVE EXISTING PIPE. CONTRACTOR SHALL PLUG REMAINING ENDS OF PIPE WITH CONCRETE, NO SEPARATE PAY.
- (14) 202 - REMOVE AND DISPOSE OF 4" DIA. CONCRETE WETWELL 3' BELOW EXISTING GRADE. CONTRACTOR SHALL FILL WET WELL WITH BACKFILL MATERIAL MEETING SPECIFICATION 103.16.
- (15) CONTRACTOR SHALL DISCONNECT PIPING. CITY CREWS WILL SALVAGE PUMPS AND CONTROLS. CONTRACTOR SHALL REMOVE METAL ACCESS TUBE TO 3' BELOW EXISTING GRADE AND BACKFILL WITH MATERIAL MEETING SPECIFICATION 103.16.
- (50) 210.00 - RESET FENCE (INCLUDES ASSOCIATED GATES, NO SEPARATE PAY) (ALL TYPES).
- (100) 102.11/108.5 - STANDARD 48" DIAMETER SANITARY SEWER MANHOLE; INCLUDES CONNECTION OF ADJACENT SEWER LINE, FORMING INVERTS AND ADJUSTING TO FINAL GRADE. (SEE CITY OF GRAND JUNCTION STANDARD DETAIL SS-02).
- (106) 102.11 - SANITARY SEWER BASIC DROP MANHOLE (6" DIA. PIPE)(48" I.D.). INCLUDES MANHOLE COATING AS PER 102.11. (SEE STD. DETAIL SS-04).
- (110) 102.11 - CONNECT TO EXISTING MANHOLE/WET WELL AS PER STD. DETAIL SS-04, SS-08. (CORE CONCRETE WET WELL)
- (115) EPOXY COAT MANHOLE INVERT. COST IS INCIDENTAL TO COST OF MANHOLE INSTALLATION.
- (118) 102.11 - CONNECT MANHOLE TO EXISTING SANITARY SEWER. CONTRACTOR SHALL USE A CAST-IN-PLACE BASE TO FORM INVERT AROUND THE EXISTING PIPE. "O" RING GASKET OR OTHER WATER STOP ARE TO BE PLACED AROUND THE INLET PIPE TO ENSURE A WATER TIGHT SEAL IS PROVIDED AT THE MH BASE. CARE SHOULD BE TAKEN SO THAT THE EXISTING LINE DOES NOT SAG OR FLOAT DURING CONSTRUCTION OF THE BASE. THE TOP OF THE EXISTING PIPE SHALL BE CUT AND REMOVED TO PROVIDE FOR THE NEW INVERT IN. CONTRACTOR SHALL CONTROL SEWER FLOW AND NOT ALLOW DEBRIS TO ENTER THE PIPE.
- (118) 102.11 - CONNECT EXISTING 6" FORCE MAIN OUTSIDE OF ROSEVALE LIFT STATION TO NEW 6" FORCE MAIN. USE 6" BENDS AS SHOWN ON SHEET 5 DETAILS.
- (152) 102.90 - GRAVITY SEWER PIPE (8" SDR-35 PVC).
- (172) 103.00 - CLAY CUT-OFF WALL (INCIDENTAL TO SEWER INSTALLATION PAY ITEM).
- (179) CONNECT NEW PIPE TO EXISTING PIPE. COST IS INCIDENTAL TO COST OF SEWER INSTALLATION.
- (180) 102.90 - STEEL CASING (36 INCH MINIMUM) (ROLL PLATE, 0.375 INCH MINIMUM WALL THICKNESS)
- (181) 104.2A - INSTALL SEWER PIPE BY BORING AND JACKING. SET CARRIER PIPE TO GRADE USING CUSTOM STEEL SUPPORTS AND FILL ANNULAR SPACE WITH FLY ASH MIXTURE PER PROJECT SPECIAL PROVISIONS. SEAL ENDS OF CASING TO FACILITATE INSTALLATION OF FLY ASH MIXTURE.
- (182) 102.90 - FORCE MAIN SEWER PIPE (6 INCH C-900 RESTRAINED JOINT CLASS 150 PVC).
- (183) 102.90 - 6 inch 22 1/2' BEND
- (184) 102.90 - 6 inch 45' BEND
- (185) 102.90 - 6 inch 90' BEND
- (186) 102.90 - 6 inch M.J. PLUG/CAP.
- (201) 304.00 - 4" CLASS 6 ABC FOR SHOULDERS AND GRAVEL DRIVEWAYS. COMPACTED TO 90% AASHTO T-180.
- (202) 304.00 - WASHED ROCK SURFACE COURSE FOR GRAVEL DRIVEWAYS. MATCH EXISTING TYPE. THICKNESS IS 2" MIN AND 3" MAX.
- (212) 212.00 - HYDRO-SEED WITH NATIVE SEED MIX.
- (265) REMOVE 8" PIPE FLOWING AWAY AS NEEDED TO CONSTRUCT MANHOLE AND PLUG REMAINING END OF PIPE WITH CONCRETE. COST IS INCIDENTAL TO COST OF SEWER INSTALLATION.
- (266) BYPASS PUMPING SHOULD NOT BE REQUIRED TO COMPLETE CONSTRUCTION. BYPASS PUMPING COST (IF USED) IS INCIDENTAL TO COST OF SEWER INSTALLATION.
- (267) CONTRACTOR SHALL WORK AROUND 3 GUY WIRES ON EITHER SIDE DURING TRENCHING AND INSTALLATION OF GRAVITY SEWER AND FORCE MAIN.
- (268) CITY WILL COORDINATE ELECTRICAL DISCONNECT FROM PEPSI LIFT STATION WITH XCEL ENERGY.
- (269) CONTRACTOR SHALL PREVENT STORM WATER RUNOFF IN EXCAVATION AREAS BY CONSTRUCTING A DIRT BERM ON THE RIVER SIDE OF EXCAVATIONS.



REVISION	DESCRIPTION	DATE	DRAWN BY	DATE
REVISION A	As Built	2008-07-17	JCS	2006
REVISION B				
REVISION C				
REVISION D				

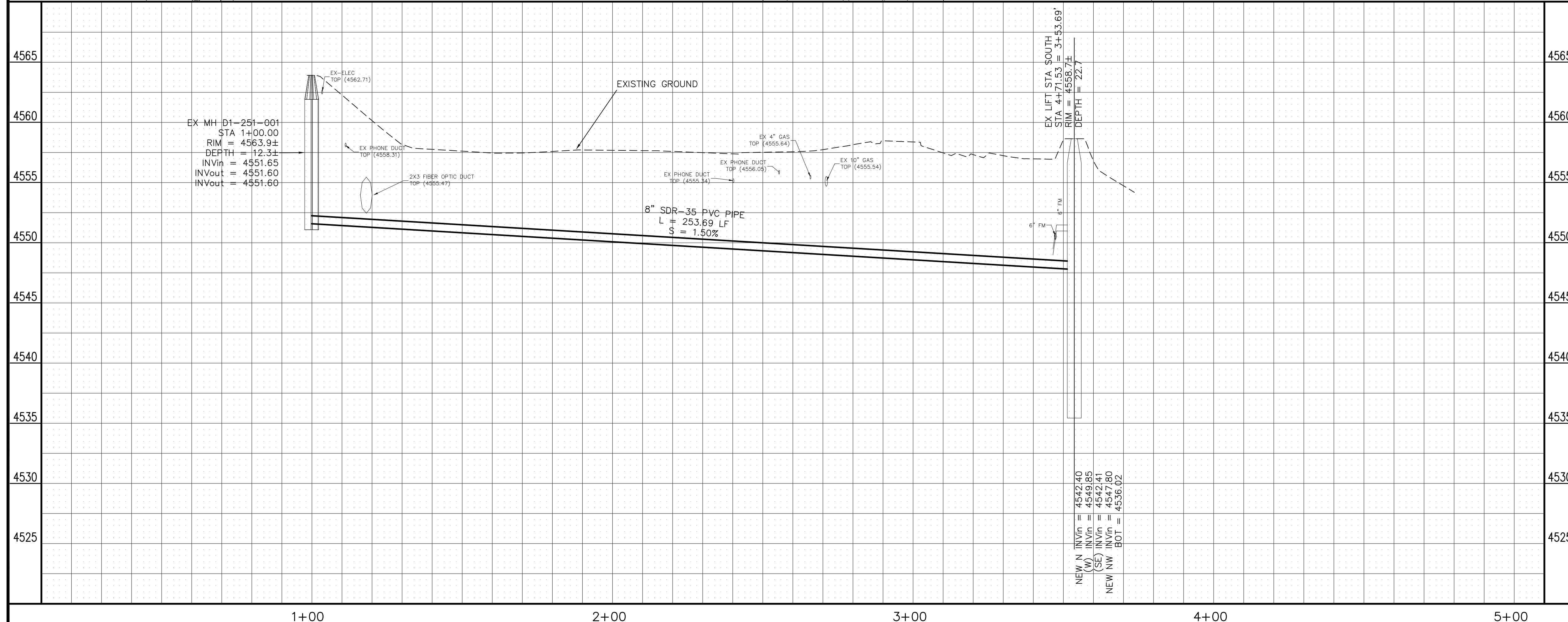
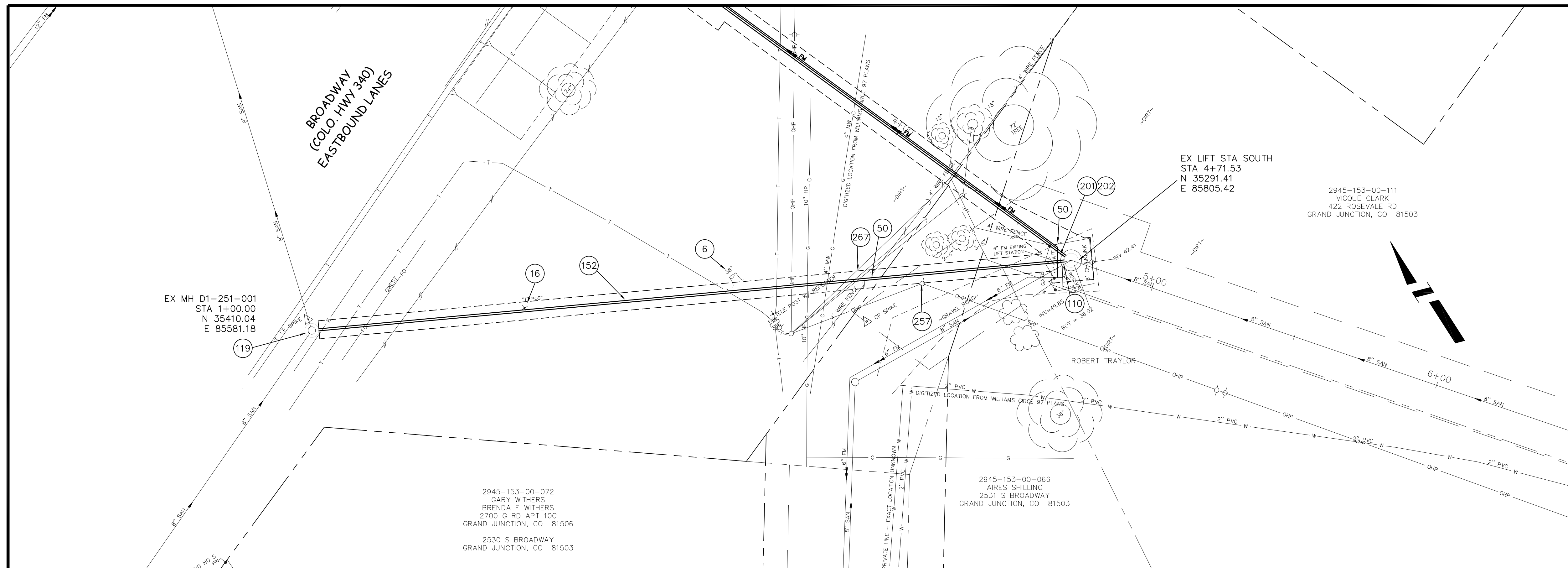
SCALES:  
 PLAN: 1" = 20'  
 PROFILE: HORIZONTAL 1" = 10', VERTICAL 1" = 2'

CITY OF  
**Grand Junction**  
 COLORADO

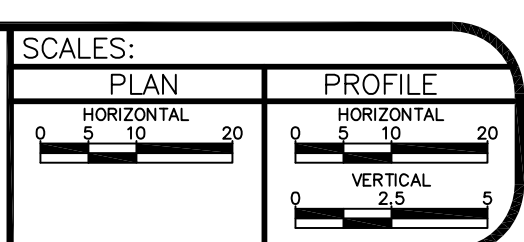
**PUBLIC WORKS  
 AND UTILITIES  
 ENGINEERING DIVISION**

**PEPSI LIFT STATION ELIMINATION AND HWY 340  
 BORE - SANITARY SEWER PLAN AND PROFILE  
 SEWER CROSSING BROADWAY WEST OF COLORADO RIVER**

- 6 202.00 - REMOVE STUMP.
- 16 202.00 REMOVE POST
- 50 210.00 - RESET FENCE (INCLUDES ASSOCIATED GATES, NO SEPARATE PAY) (ALL TYPES).
- 110 102.11 - CONNECT TO EXISTING MANHOLE/WET WELL AS PER STD. DETAIL SS-04, SS-08. (CORE CONCRETE WET WELL)
- 119 CONNECT TO EXISTING MANHOLE. CONTRACTOR SHALL CONNECT THE SEWER PIPE TO THE EXISTING MANHOLE IN SUCH A WAY THAT ENSURES A WATERTIGHT CONNECTION. CONTRACTOR SHALL RECONSTRUCT MH INVERT. COST SHALL BE INCIDENTAL TO COST OF "CONNECTING TO EXISTING MANHOLE"
- 152 102.90 - GRAVITY SEWER PIPE (8" SDR-35 PVC).
- 201 304.00 - 4" CLASS 6 ABC FOR SHOULDERS AND GRAVEL DRIVEWAYS. COMPACTED TO 90% AASHTO T-180.
- 202 304.00 - WASHED ROCK SURFACE COURSE FOR GRAVEL DRIVEWAYS. MATCH EXISTING TYPE. THICKNESS IS 2" MIN AND 3" MAX.
- 257 PROTECT/STABILIZE POLE, POST, SIGN.
- 267 CONTRACTOR SHALL WORK AROUND 3 GUY WIRES ON EITHER SIDE DURING TRENCHING AND INSTALLATION OF GRAVITY SEWER AND FORCE MAIN.



REVISION	DESCRIPTION	DATE	DRAWN BY	DATE
			JCS	2007



**PUBLIC WORKS  
AND UTILITIES  
ENGINEERING DIVISION**

**PEPSI LIFT STATION ELIMINATION PROJECT  
SEWER FROM MH D1-251-001 TO LIFT STATION  
ON THE SOUTH SIDE OF BROADWAY AT THE COLORADO RIVER**

N:\LandProj\F10231 (ROSEVALE LS ELIMINATION)\dwg\DESIGN\F10231 IN CIVIL 3D 2006.dwg, 5A 3-9-07 REVISION, 6/24/2008 7:13:12 AM



**PHOTO A**  
PEPSI LIFT STATION ELECTRIC SERVICE TO BE DISCONNECTED BY CITY AND XCEL ENERGY

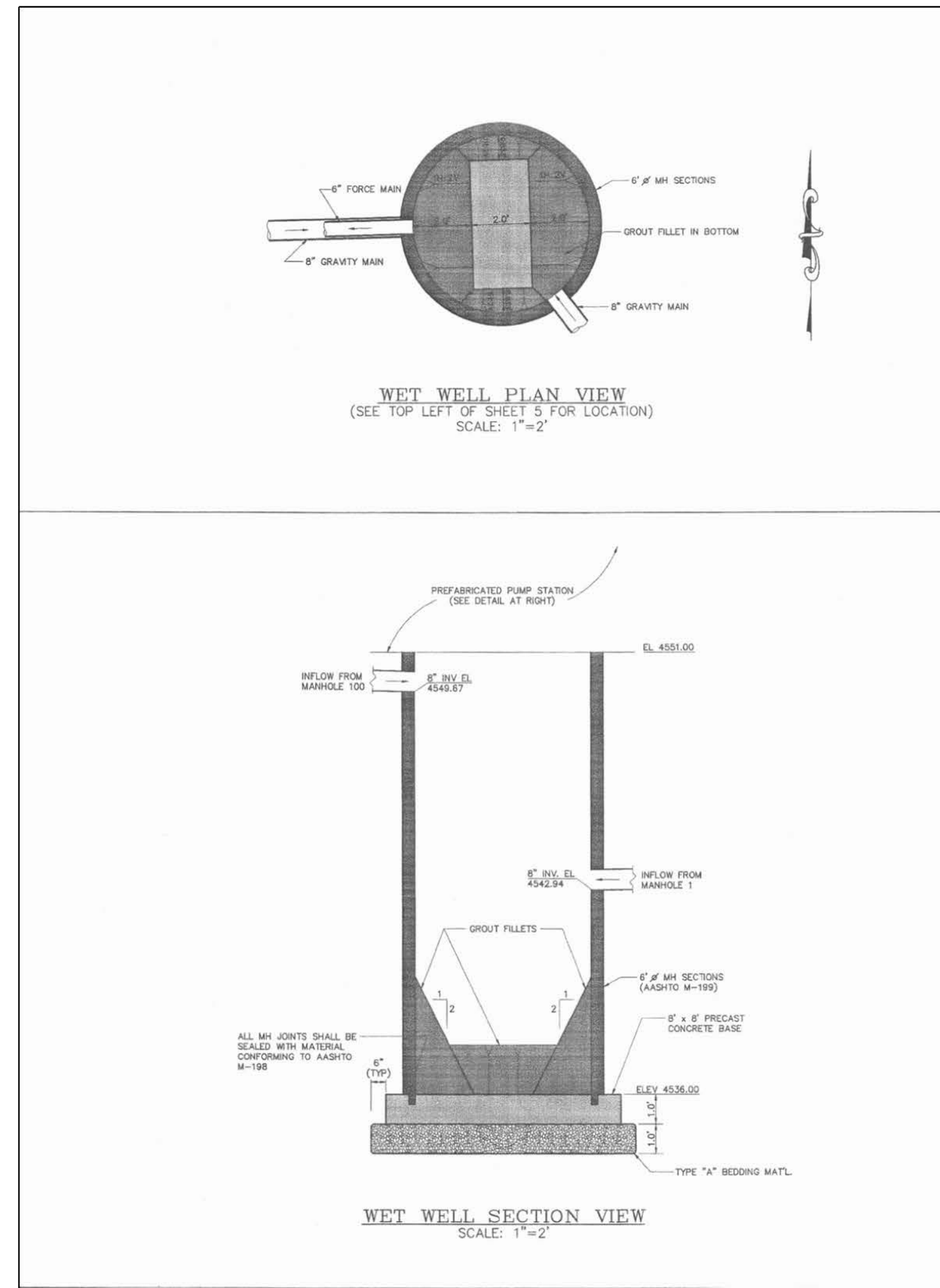


**PHOTO B**  
PEPSI LIFT STATION PUMP ACCESS TO BE REMOVED 3' BELOW GRADE & BACKFILLED AFTER CITY SALVAGE BY CONTRACTOR.

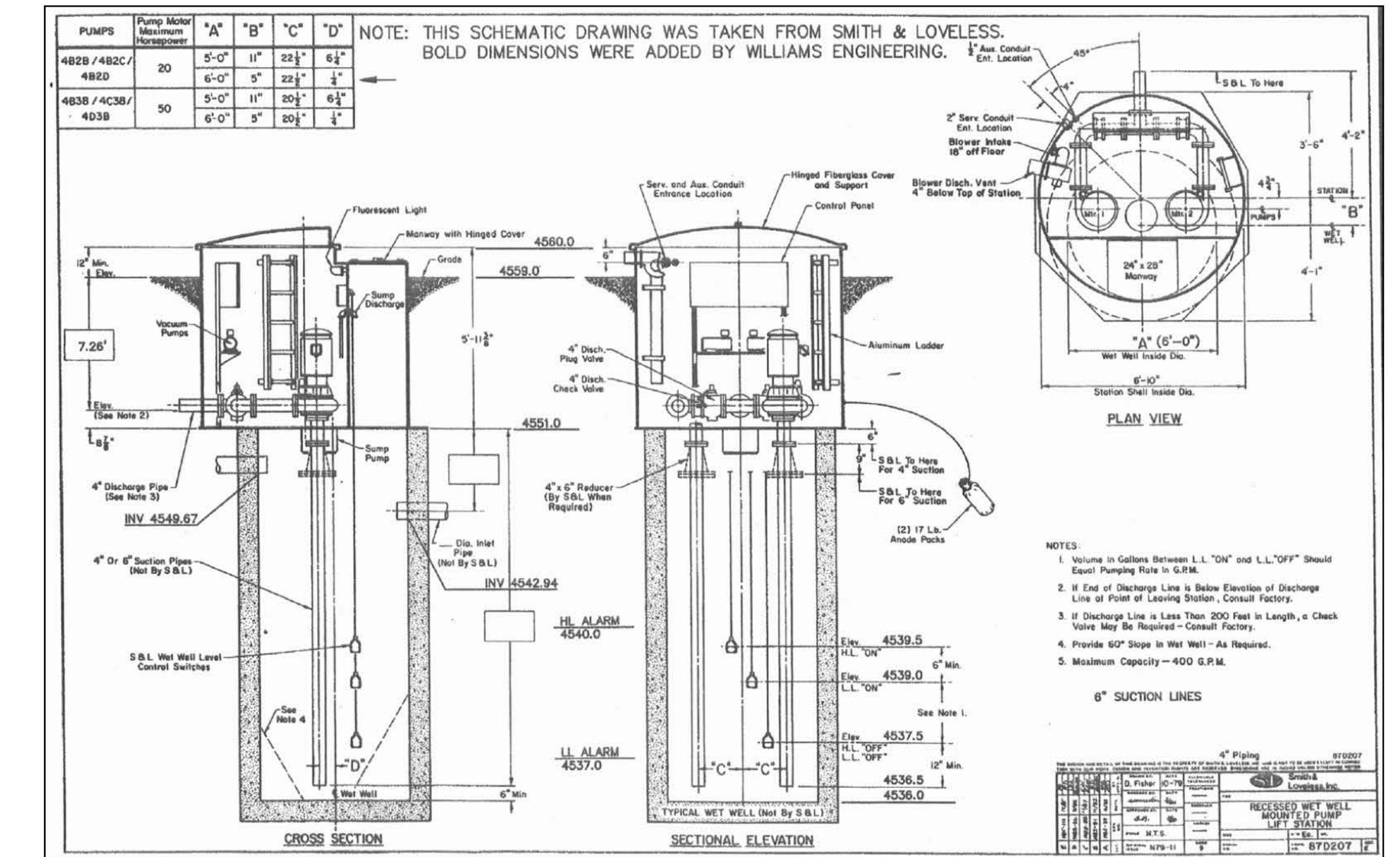


**PHOTO C**  
PEPSI LIFT STATION WETWELL TO BE REMOVED 3' BELOW GRADE & BACKFILLED

**PEPSI LIFT STATION**

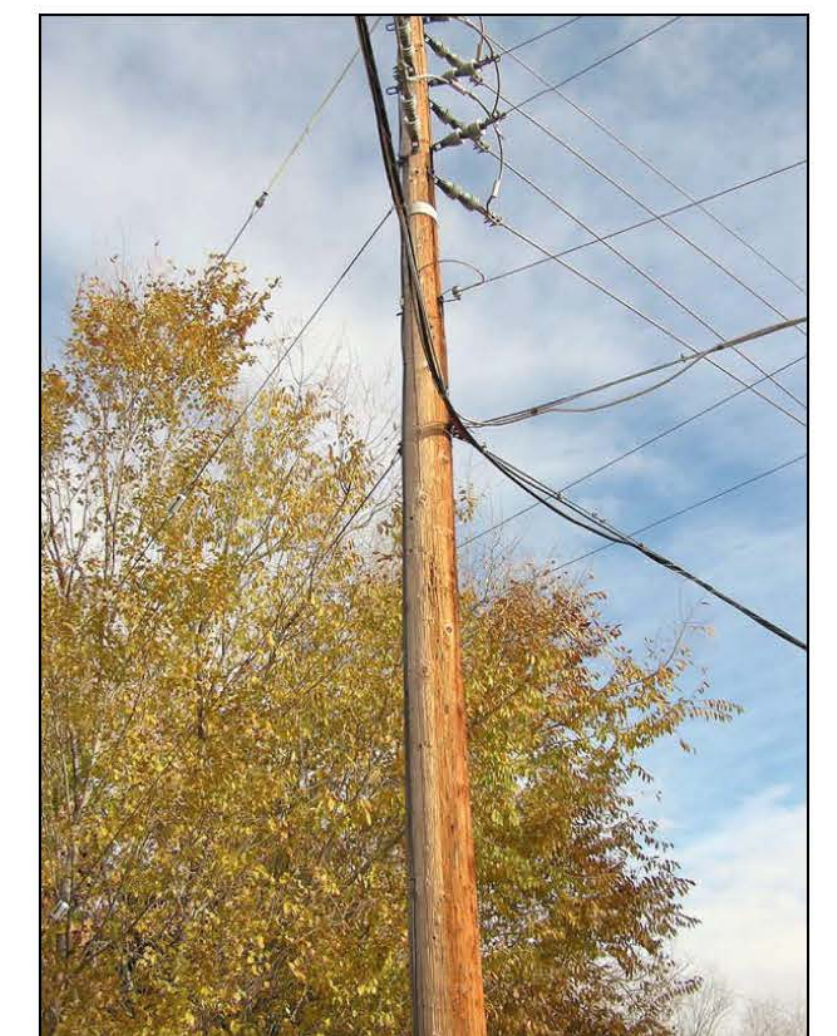


**PHOTO D**  
EXISTING ROSEVALE LIFT STATION PUMPS AND DISCHARGE PIPING



**PHOTO E**  
EXISTING ROSEVALE LIFT STATION PUMPS AND DISCHARGE PIPING

**ROSEVALE LIFT STATION**



**PHOTO F**  
GUY WIRES CROSS ALIGNMENT OF NEW 6" FORCE MAIN AND NEW 8" GRAVITY SEWER. CONTRACTOR SHALL WORK AROUND DURING TRENCHING AND BACKFILLING.

REVISION	DESCRIPTION	DATE	DRAWN BY	DATE
REVISION			DESIGNED BY	DATE
REVISION			CHECKED BY	DATE
REVISION			APPROVED BY	DATE

SCALE  
N.T.S.



**PUBLIC WORKS AND UTILITIES ENGINEERING DIVISION**

**PEPSI LIFT STATION ELIMINATION LIFT STATION DETAILS**