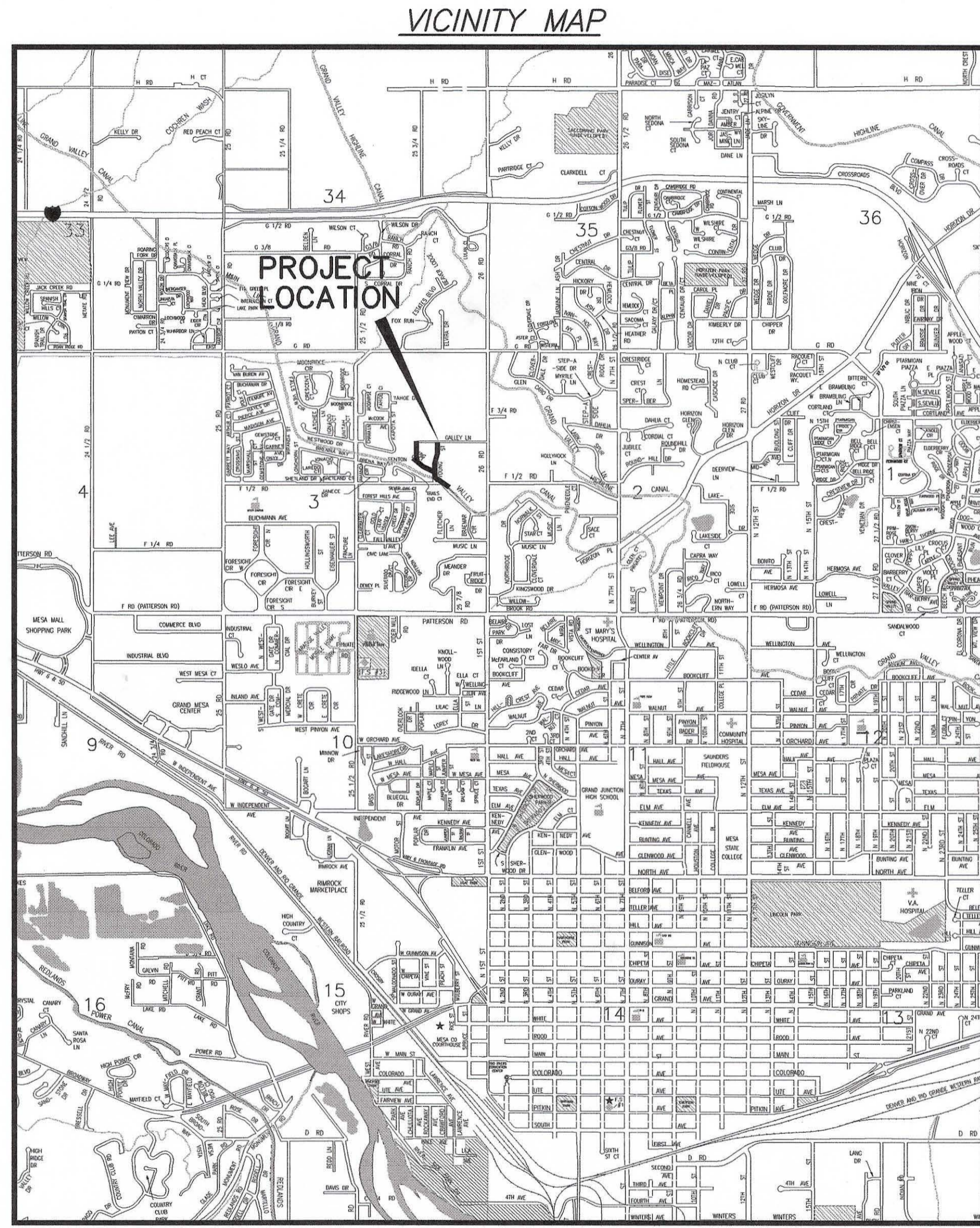


GALLEY LANE NEIGHBORHOOD SEWER IMPROVEMENT DISTRICT JULY, 2007

FOR MA.

- 1 ————— Cover Sheet
- 2 ————— Standard Abbreviations, Legend, and Symbols
- 3 ————— Summary of Approximate Quantities
- 3a ————— Project Control Map
- 4-8 ————— Sanitary Sewer Plan and Profiles
- 9 ————— Storm Water Management Plan



UTILITIES AND AGENCIES								
AGENCY	NAME	POSITION	ROLE	MAILING ADDRESS	STREET ADDRESS	CITY, STATE	VOICE-WK	FAX
GRAND JUNCTION, CITY OF	PAUL JAGIM	PROJECT ENGINEER	PROJECT ENGINEER	250 N. 5th STREET	250 N. 5th STREET	GRAND JCT., CO 81501	(970) 256-4023	(970) 256-4011
GRAND JUNCTION, CITY OF	BRET GUILLORY	UTILITY ENGINEER	SANITARY SEWER	250 N. 5th STREET	250 N. 5th STREET	GRAND JCT., CO 81501	(970) 244-1590	(970) 256-4022
GRAND VALLEY IRRIGATION CO.	PHIL BERTRAND	SUPERINTENDENT	IRRIGATION	688 26 ROAD	688 26 ROAD	GRAND JCT., CO 81506	(970) 242-2762	(970) 242-2770
BRESNAN	CHUCK WEIDMAN		CABLE TV	2502 FORESIGHT CIRCLE	2502 FORESIGHT CIRCLE	GRAND JCT., CO 81504	(970) 245-8750	(970) 245-6803
QWEST	TIM HALE	ENGINEER	TELEPHONE	2524 BLICHMANN ROAD	2524 BLICHMANN ROAD	GRAND JCT., CO 81504	(970) 244-4514	(970) 240-4349
UTE WATER	ED TOLEN	DISTRICT ENGINEER	WATER	560 25 ROAD	560 25 ROAD	GRAND JCT., CO 81505	(970) 242-7491	(970) 243-9182
XCEL	DAN STEINKIRCHNER	UNIT MANAGER	GAS, ELECTRIC	2538 BLICHMANN ROAD	2538 BLICHMANN ROAD	GRAND JCT., CO 81506	(970) 244-2656	(970) 244-2661
GRAND JUNCTION DRAINAGE DIST	JOHN BALLAGH	MANAGER	STORM SEWER	P.O. BOX 969		GRAND JCT., CO 81502	(970) 242-4343	(970) 242-4348



*Public Works & Utilities
Engineering Division*



*AS BUILTS WERE DONE UNDER
MY DIRECT SUPERVISION.*

*J. FLETCHER
HIGH DESERT SURVEYING*

DRAWING STATUS:	
<input type="radio"/> PROGRESS	<input type="radio"/> FINAL CONSTRUCTION DRAWINGS
<input type="radio"/> ASBUILT	
DESIGNED BY:	
JUSTIN VENSEL, PROJECT ENGINEER	DATE
REVIEWED BY:	
BRET GUILLORY, UTILITY ENGINEER	DATE
AUTHORIZED FOR CONSTRUCTION	
TRENT PRALL, CITY ENGINEER	DATE
ACCEPTED AS CONSTRUCTED	
JUSTIN VENSEL, PROJECT ENGINEER	DATE

02112600
+4880401.TIF

GALLEY LANE NEIGHBORHOOD S.I.D., JULY, 2007, Plan Set No. —

ABBREVIATIONS

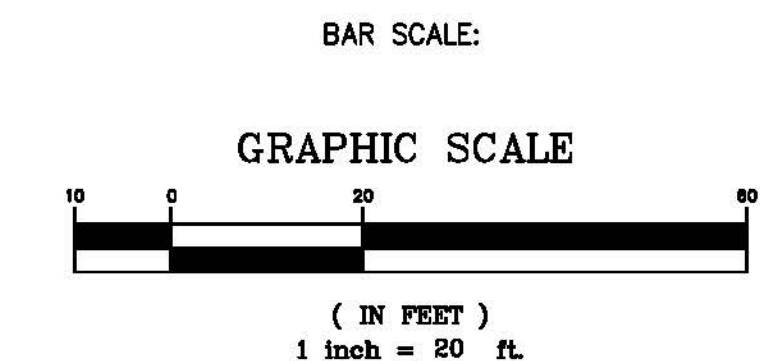
AASTHO	AMERICAN ASSOCIATION OF STATE HIGHWAY & TRANSPORTATION OFFICIALS
ABC	AGGREGATE BASE COURSE
AC	ASBESTOS CEMENT
AP	ANGLE POINT
ASB	ANCHORED STRAW BALES
ASP	ALUMINIZED STEEL PIPE
ASTM	AMERICAN SOCIETY FOR TESTING MATERIALS
AWWA	AMERICAN WATER WORKS ASSOCIATION
BC	BACK OF CURB
BF	BUTTERFLY VALVE
BOW	BACK OF WALK
BCR	BEGIN CURB RETURN
BOT	BOTTOM
BSWMP	BETTER STORM WATER MANAGEMENT PRACTICES
CH	CHORD
CAP	CORRUGATED ALUMINUM PIPE
CDOT	COLORADO DEPARTMENT OF TRANSPORTATION
CI	CAST IRON
C, G, & SW	CURB, GUTTER & SIDEWALK
CL	CENTER LINE
CL	CLEAR
CMP	CORRUGATED METAL PIPE
CO	CLEAN OUT
COMB	COMBINATION (AS IN STORM SEWER AND SANITARY SEWER)
CONC	CONCRETE
CSM	CITY SURVEY MONUMENT
CSP	CORRUGATED STEEL PIPE
CJ	COPPER
DI	DUCTILE IRON
DWY	DRIVEWAY
E	ELECTRIC
ECR	END CURB RETURN
EG	EDGE OF GUTTER
EL	ELEVATION
EP	EDGE OF PAVEMENT
EX	EXISTING
FB	FULL BODY
FC	FACE OF CURB
FG	FINISHED GRADE
F	FLOW LINE
FL	FLANGE
FM	FORCE MAIN
FO	FIBER OPTICS
FS	FAR SIDE
FTG	FOOTING
G	GAS
GB	GRADE BREAK
GM	GAS METER
GV	GATE VALVE
HBP	HOT BITUMINOUS PAVEMENT
HDPE	HIGH DENSITY POLYETHYLENE
INV	INVERT
IRR	IRRIGATION
L	LENGTH OF ARC
LC	LONG CHORD
LF	LINEAR FEET
LL	LONG ARC
LS	SHORT ARC
LT	LEFT
MB	MAILBOX
MCSM	MESA COUNTY SURVEY MONUMENT
MH	MANHOLE
MJ	MECHANICAL JOINT
MW	MILL WRAP
N/A	NOT APPLICABLE
NIC	NOT IN CONTRACT
NOP	NO ONE PERSON
NRCP	NON-REINFORCED CONCRETE PIPE
NS	NEAR SIDE
NTS	NOT TO SCALE
OHP	OVERHEAD POWER
OHT	OVERHEAD TELEPHONE
PC	POINT OF CURVATURE
PCC	POINT OF COMPOUND CURVATURE
PE	POLYETHYLENE
PERF	PERFORATED
PI	POINT OF INTERSECTION
PIP	PLASTIC IRRIGATION PIPE
POC	POINT ON CURVE
POT	POINT ON TANGENT
PR	PROPOSED
PRC	POINT OF REVERSE CURVATURE
PT	POINT OF TANGENCY
PVC	POLYVINYL CHLORIDE
R	RADIUS
RCP	REINFORCED CONCRETE PIPE
REQ'D	REQUIRED
RG	RESTRAINED GLANDS
RL	LONG RADIUS
ROW	RIGHT OF WAY
RP	RADIUS POINT
RR	RAIL ROAD
RS	SHORT RADIUS
RT	RIGHT
S	SLOPE
SAN	SANITARY
SC	SHORT CHORD
SCD	STANDARD CONTRACT DOCUMENTS
SCH	SCHEDULE
SF	SILT FENCE
SL	SECTION LINE
SSRB	STANDARD SPECIFICATIONS FOR ROAD & BRIDGE CONSTRUCTION
SSUU	STANDARD SPECIFICATIONS FOR CONSTRUCTION OF UNDERGROUND UTILITIES
STA	STATION
STL	STEEL
STM	STORM
T	TELEPHONE
TAN	LENGTH OF TANGENT
TC	TOP OF CURB
TH	TEST HOLE
TV	TELEVISION
(TYP)	TYPICAL
UU	UNDERGROUND UTILITIES
VC	VERTICAL CURVE
VCP	VITRIFIED CLAY PIPE
VPC	VERTICAL POINT OF CURVATURE
VPCC	VERTICAL POINT OF COMPOUND CURVATURE
VPRC	VERTICAL POINT OF REVERSE CURVATURE
VPI	VERTICAL POINT OF INTERSECTION
VPT	VERTICAL POINT OF TANGENCY
W	WATER
Δ	DELTA ANGLE

LEGEND

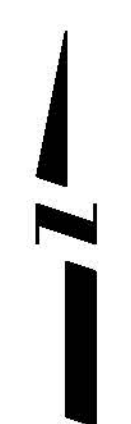
BSWMP DRAINAGE BASIN BOUNDARY	
BSWMP ANCHORED STRAW BALES	
BSWMP SILT FENCE	
BUILDING	
CONCRETE CURB AND GUTTER	
CONCRETE CURB, GUTTER, & SIDEWALK	
CONCRETE DITCH	
CONCRETE SIDEWALK	
CULVERT	
EARTH DITCH	
EDGE OF GRAVEL	
EDGE OF PAVEMENT	
FENCE (BARBED WIRE)	
FENCE (CHAIN LINK)	
FENCE (IRON)	
FENCE (PLASTIC)	
FENCE (TEMPORARY CONSTRUCTION)	
FENCE (WOOD)	
FENCE (WOVEN WIRE)	
GUARD RAIL	
HATCHING: INDICATES ASPHALT REMOVAL	
HATCHING: INDICATES CONCRETE REMOVAL	
HATCHING: INDICATES PLANTING/HYDRO-SEEDING (TYPE SPECIFIED ON PLANS)	
HATCHING: INDICATES STAGING AREA	
LINE (CENTER OF IMPROVEMENTS)	
LINE (CITY LIMITS)	
LINE (CONTROL)	
LINE (EASEMENT)	
LINE (MONUMENT/SECTION)	
LINE (PROPERTY)	
LINE (RIGHT OF WAY)	
MATCH LINE	
PIPE (IRRIGATION)	
PIPE (SIPHON)	
PROPOSED CONCRETE CURB AND GUTTER	
PROPOSED CONCRETE CURB, GUTTER, & SIDEWALK	
PROPOSED CONCRETE SIDEWALK	
PROPOSED "WET" UTILITIES (CONSTRUCTION NOTE WILL INDICATE TYPE, SIZE, AND MATERIAL OF NEW MAIN)	
RAIL ROAD	
RETAINING WALL	
STRIPING (CONTINUOUS WHITE)	
STRIPING (DASHED WHITE)	
STRIPING (CONTINUOUS YELLOW)	
STRIPING (DASHED YELLOW)	
TOP OF SLOPE	
CONTOUR LINES (SHOWN BETWEEN TOP & TOE)	
TOE OF SLOPE	
TRAFFIC DETECTOR LOOP	
UTILITY LINE (ABANDON) (THIS CASE A WATER LINE)	
UTILITY LINE (CABLE TV)	
UTILITY LINE (ELECTRIC)	
UTILITY LINE (FIBER OPTIC)	
UTILITY LINE (GAS)	
UTILITY LINE (HIGH VOLTAGE OVERHEAD POWER)	
UTILITY LINE (OVERHEAD POWER)	
UTILITY LINE (OVERHEAD TELEPHONE)	
UTILITY LINE (SANITARY SEWER)	
UTILITY LINE (SANITARY SEWER FORCE MAIN)	
UTILITY LINE (SANITARY SEWER SERVICE)	
UTILITY LINE (STORM SEWER)	
UTILITY LINE (STORM SEWER, PERFORATED)	
UTILITY LINE (STORM/SANITARY SEWER SEWER COMBINATION)	
UTILITY LINE (TELEPHONE)	
UTILITY LINE (WATER)	

SYMBOLS

BENCH MARK	
CATCH BASIN	
CLEAN OUT	
CURB STOP	
FIRE HYDRANT	
GUY WIRE ANCHOR	
HEADGATE	
IRRIGATION PUMP	
MAILBOX	
MANHOLE (ELECTRIC)	
MANHOLE (GAS)	
MANHOLE (SANITARY/STORM)	
MANHOLE (TELEPHONE)	
MANHOLE (TV)	
MANHOLE (WATER)	
METER (GAS)	
METER (WATER)	
PEDESTAL (TELEPHONE)	
PEDESTAL (TV)	
PROPERTY PIN	
PULL BOX	
REDUCER FITTING	
SIGN OR POST (SIGN TYPE NOTED)	
SPRINKLER HEAD	
STREET LIGHT	
SURVEY MONUMENT (CITY)	
SURVEY MONUMENT (TYPE NOTED)	
TEST HOLE	
TRAFFIC PAINT MARKING	
TRAFFIC SIGNAL POLE AND MAST ARM	
UTILITY POLE	
VALVE (GAS)	
VALVE (IRRIGATION)	
VALVE (WATER)	
VEGETATION (HEDGE OR BUSH)	
VEGETATION (TREE STUMP)	
VEGETATION (TREE) (CALIPER SIZE NOTED)	
WATER HYDRANT	
WEIR	
YARD LIGHT	



NORTH ARROW:



REVISION Δ	DESCRIPTION	DATE	DRAWN BY JCS	DATE 4-02
REVISION Δ			DESIGNED BY	DATE
REVISION Δ			CHECKED BY	DATE
REVISION Δ			APPROVED BY	DATE

SCALE	
PLAN	PROFILE
HORIZ. 1"=20'	HORIZ.
	VERT.



PUBLIC WORKS AND UTILITIES ENGINEERING DIVISION

CITY OF GRAND JUNCTION STANDARD ABBREVIATIONS, LEGEND, AND SYMBOLS SHEET

N:\Landscape\148221\Galley Lane STD\dwg\2008-07 as built.dwg, 2, 7/3/2008 4:35:17 PM

Bid Schedule: Galley Lane Sewer improvement District

Item No.	CDOT, City Ref.	Description	Quantity	Units	Unit Price	Total Price
1	108.2	Import Trench Backfill (including Haul and disposal of unsuitable excavated materia).	4,700.	Ton	\$ _____	\$ _____
2	108.2	12" Culvert (C-900 PVC)(Including Removal of existing)	24.	LF	\$ _____	\$ _____
3	108.2	12" Culvert (C-900 PVC)(flow-fill backfill)(Including Removal of existing)	40.	LF	\$ _____	\$ _____
4	108.2	6" Gravity Sewer Pipe (SDR 35PVC)	1,600.	LF	\$ _____	\$ _____
5	108.2	4" Gravity Sewer Pipe (SDR 35 PVC)	700.	LF	\$ _____	\$ _____
6	108.2	6" X 4" Sewer Service Tap (Full Body Wye w/ 45 Degree Bend)	16.	EA	\$ _____	\$ _____
7	108.3	Sewer service Cleanout (Std Detail SS-07)	19.	EA	\$ _____	\$ _____
8	108.5	Connect Manhole to Existing Sanitary Sewer (10" Pipe) □	1.	EA	\$ _____	\$ _____
9	108.5	Sanitary Sewer Basic Manhole Components (48" ID)	11.	EA	\$ _____	\$ _____
10	108.5	Manhole Barrel Section (D>5')(48" ID)	32.	VF	\$ _____	\$ _____
11	108.5	Sewer service Cleanout (Std Detail SS-07)	19.	EA	\$ _____	\$ _____
12	108.7	Granular Stabilization Material (Type B)	600.	Ton	\$ _____	\$ _____
13	202	Removal and disposal of Abandon AC Waterline	76.	LF	\$ _____	\$ _____
14	202	Removal of Asphalt Mat (Planning) for Trench Excavation	1,500.	SY	\$ _____	\$ _____
15	202	Remove Bush	3.	EA	\$ _____	\$ _____
16	208	Erosion Control Logs	80.	LF	\$ _____	\$ _____
17	209	Dust Abatement	70.	DAY	\$ _____	\$ _____
18	209	Portable Sanitary Facility	1.	LS	\$ _____	\$ _____

Item No.	CDOT, City Ref.	Description	Quantity	Units	Unit Price	Total Price
19	210	Reset Irrigation System Components (per Each Property)	2.	EA	\$ _____	\$ _____
20	210	Reset Lanscape Appurtenances (Decorative Rock) (match existing types)	41.	SY	\$ _____	\$ _____
21	210	Reset Metal Edger	10.	LF	\$ _____	\$ _____
22	210	Reset Fence (all types)	32.	LF	\$ _____	\$ _____
23	212	Sod	94.	SY	\$ _____	\$ _____
24	304	Washed Rock Surface Course (2"-3" Thick) includes underlying aggregate base course (Class 6)(4" thick)(shoulder and driveways)	63.	SY	\$ _____	\$ _____
25	304	Aggregate Base Course (Class 6) (6" Thick)	1,500.	SY	\$ _____	\$ _____
26	401	Hot Mix Asphalt (3" Thick) Grading SX (Binder 64-22)(One 3" Lift)	1,500.	SY	\$ _____	\$ _____
27	608	Concrete Curb and Gutter (2' Width)	40.	LF	\$ _____	\$ _____
28	608	Concrete Ribbon Curb	10.	LF	\$ _____	\$ _____
29	625	Construction Surveying	1.	LS	\$ _____	\$ _____
30	626	Mobilization	1.	LS	\$ _____	\$ _____
31	629	Reference and Reset Survey Monument	1.	EA	\$ _____	\$ _____
32	630	Traffic Control (Complete In Place)	1.	LS	\$ _____	\$ _____
33	630	Traffic Control Plan	1.	LS	\$ _____	\$ _____
34	GCC56	Weekly News Letter	1.	LS	\$ _____	\$ _____
MCR		Minor Contract Revisions	---	---	---	\$ 8,500.00
Bid Amount:					\$	
Bid Amount:						dollars

N:\LandProj\F48221\Galley Lane S.I.D.\dwg\CTVTL 3D DWG\2008-07 as built.dwg, 3/7/3/2008 4:36:47 PM

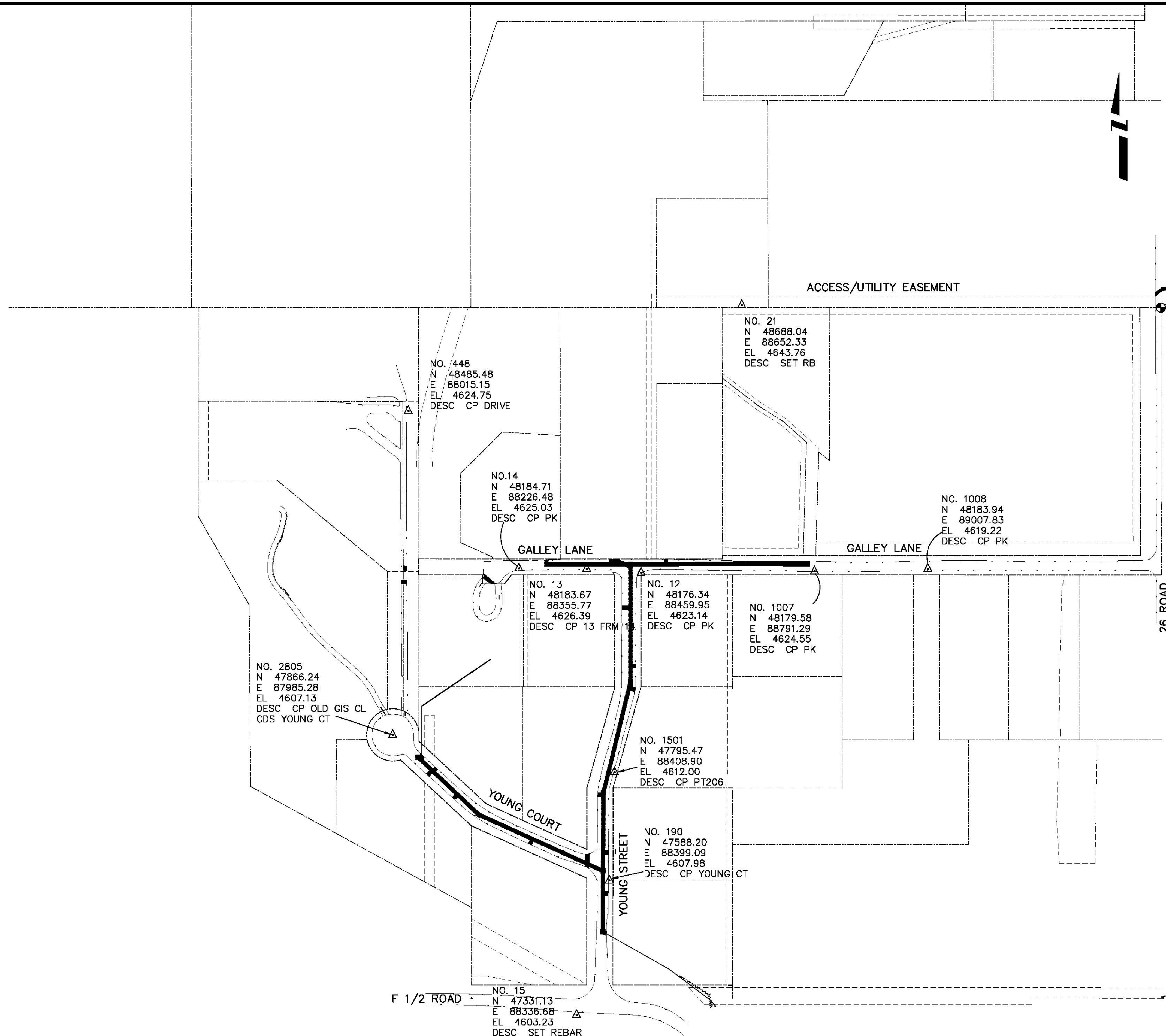
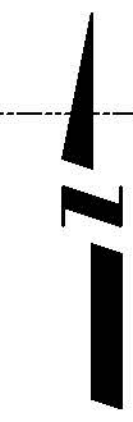
REVISION ▲	DESCRIPTION	DATE	DRAWN BY _____	DATE _____
REVISION ▲	_____	_____	DESIGNED BY _____	DATE _____
REVISION ▲	_____	_____	CHECKED BY _____	DATE _____
REVISION ▲	_____	_____	APPROVED BY _____	DATE _____

SCALE
N.T.S.

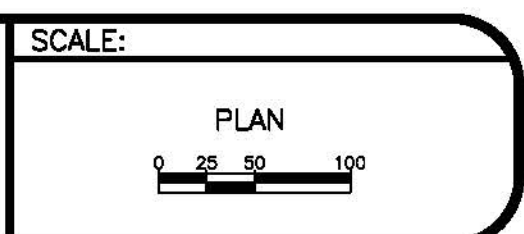


**PUBLIC WORKS
AND UTILITIES
ENGINEERING DIVISION**

**GALLEY LANE NEIGHBORHOOD S.I.D.
SUMMARY OF APPROXIMATE QUANTITIES**



REVISION	DESCRIPTION	DATE	DRAWN BY	JCS	DATE	2005
REVISION			DESIGNED BY		DATE	
REVISION			CHECKED BY		DATE	
REVISION			APPROVED BY		DATE	



**PUBLIC WORKS
AND UTILITIES
ENGINEERING DIVISION**

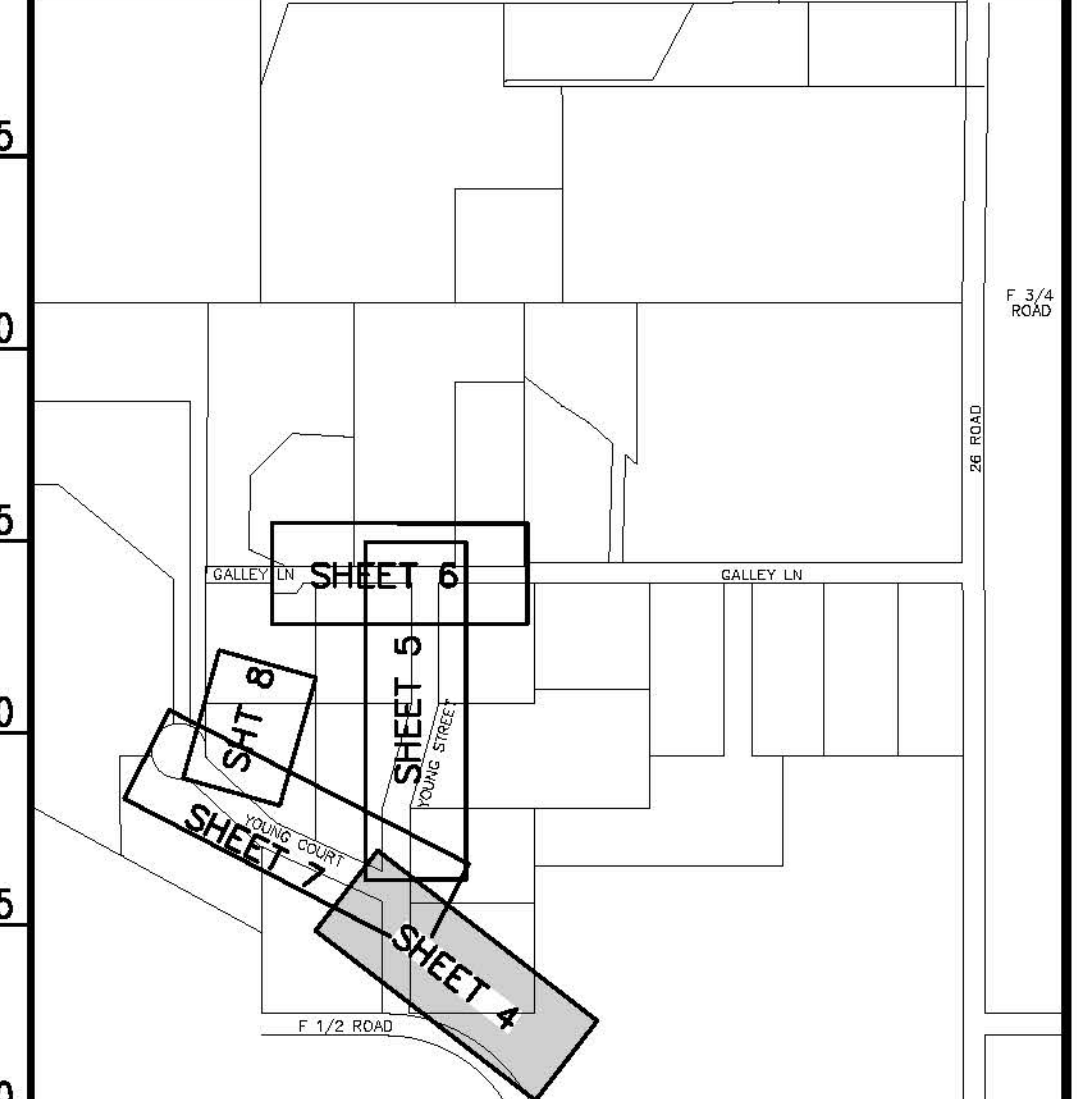
**GALLEY LANE NEIGHBORHOOD S.I.D.
PROJECT CONTROL MAP**

N:\Lm\proj\148221\Galley Lane SID\dwg\civil\3D DWG\2008-07 as built.dwg - 3A(PROJECT CONTROL MAP), 7/3/2008 4:42:00 PM

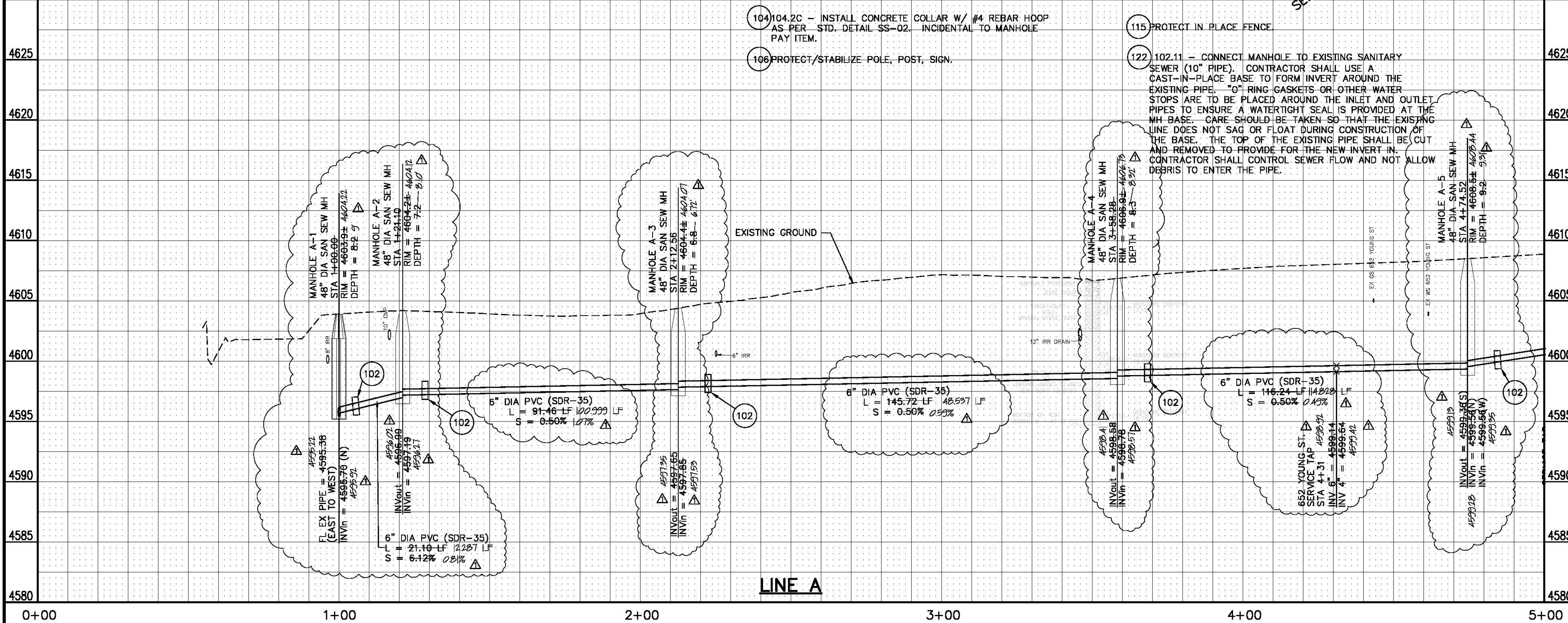
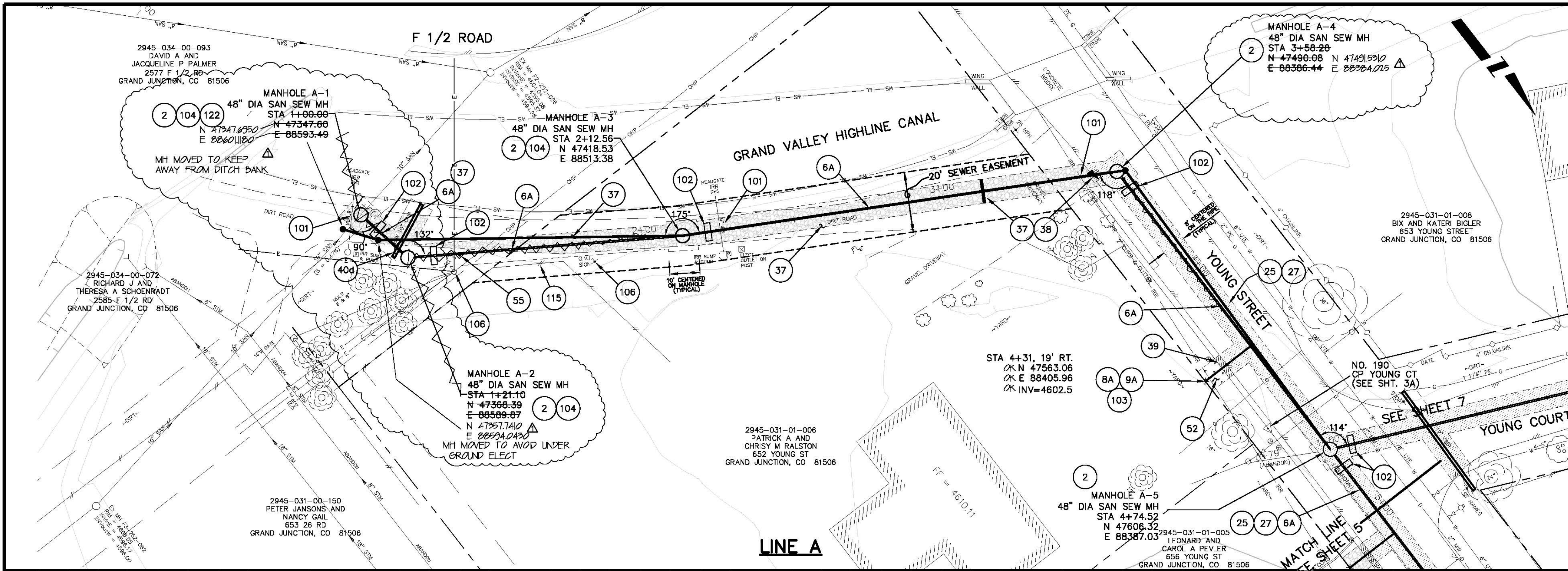
CONSTRUCTION NOTES

- 2 102.11/108.5 - STANDARD 48" DIAMETER SANITARY SEWER MANHOLE, INCLUDES CONNECTION OF ADJACENT SEWER LINE, FORMING INVERTS AND ADJUSTING TO FINAL GRADE. (SEE CITY OF GRAND JUNCTION STANDARD DETAIL SS-02).
- 6A 102.9A - 6" GRAVITY SEWER PIPE (SDR-35 PVC). INCLUDES TYPE A BEDDING AND HAUNCHING MATERIAL AND BACKFILL OF TRENCH WITH NATIVE MATERIALS MEETING 103.16 EARTH BACKFILL MATERIAL.
- 8A 102/103/104 - 4" SEWER SERVICE TAP, 6" X 4" FULL BODY WYE (SEE STD. DETAIL SS-06).
- 9A 102/103/104 - 4" SDR-35 PVC SANITARY SERVICE LINE WITH NATIVE BACKFILL MEETING 103.16 EARTH BACKFILL MATERIAL. INCLUDES SINGLE SERVICE LINE PER TRENCH, TYPE A BEDDING AND HAUNCHING, AND END-OF-SERVICE CAP.
- 25 103.3 - ASPHALT REMOVAL FOR TRENCH EXCAVATION: CUT AND REMOVE (OR FULL-DEPTH MILL) ASPHALT AS SHOWN.
- 27 103.18/304/401 - PAVEMENT AND ROAD BASE REPLACEMENT ON SIDE STREETS AND DRIVEWAYS: 3" HOT BITUMINOUS PAVEMENT (GRADING SX, PG 64-22 OIL), OVER 6" CLASS 6 ABC (SEE STD. DETAIL GU-03). PAID PER SY.
- 37 304 - 4" CLASS 6 ABC FOR SHOULDERS AND GRAVEL DRIVEWAYS. COMPACTED TO 90% AASHTO T-180.
- 38 703.05 - WASHED ROCK SURFACE COURSE FOR GRAVEL DRIVEWAYS. MATCH EXISTING TYPE. THICKNESS IS 2" MIN AND 3" MAX.
- 39 202/608 - REMOVE AND REPLACE CONCRETE OR ASPHALT CURB AND GUTTER/CURBING/GUTTER/BORDER. SIZE AND STYLE VARY. MATCH EXISTING.
- 40D 202/102.10 - REMOVE EXISTING STORMWATER/IRRIGATION CULVERT. REPLACE WITH 12" C-900 DR-14. TRENCH WIDTH = OD+12" MIN; =OD+18" MAX. INSTALL TYPE A BEDDING MATERIAL TO SPRINGLINE; FLOWFILL SPRINGLINE TO BASE OF CL 6 ABC (100 LBS CEMENT/CY)
- 52 207/212 - SOD. INCLUDES 6" OF STOCKPILED EXISTING TOPSOIL (IF APPROVED BY INSPECTOR/ENGINEER) OR 6" IMPORTED TOPSOIL.
- 55 629 - REFERENCE AND RESET SURVEY MONUMENT.
- 101 SPAN/SUPPORT/PROTECT EXISTING STORMWATER/IRRIGATION CULVERT. AMEND BACKFILL WITH BENTONITE POND LINER (MIXED AS PER MFG. SPECIFICATIONS) FOR PLACEMENT AROUND CULVERT (2" ALL SIDES OF PIPE OVER EXPOSED LENGTH) DURING BACKFILL OPERATION. INCIDENTAL TO SEWER INSTALLATION PAY ITEM.
- 102 CLAY CUT-OFF WALL (INCIDENTAL TO SEWER INSTALLATION PAY ITEM).
- 103 CONTRACTOR IS RESPONSIBLE FOR REPAIR COSTS ASSOCIATED WITH ANY/ALL DAMAGE TO PRIVATE PROPERTY BEHIND ROW LINE OR EASEMENT LIMITS.

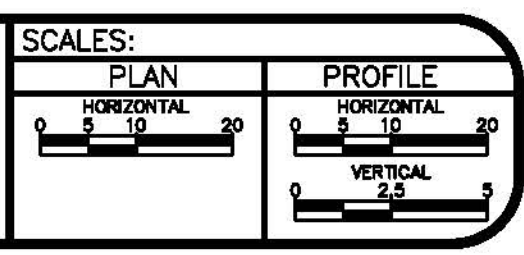
NOTE: NOTIFY AFFECTED UTILITY VENDOR 48 HOURS PRIOR TO EXCAVATIONS THAT WILL EXPOSE UTILITY LINES. THE COVER SHEET WILL HAVE A LISTING OF UTILITY VENDORS AND TELEPHONE NUMBERS.



LOCATION MAP

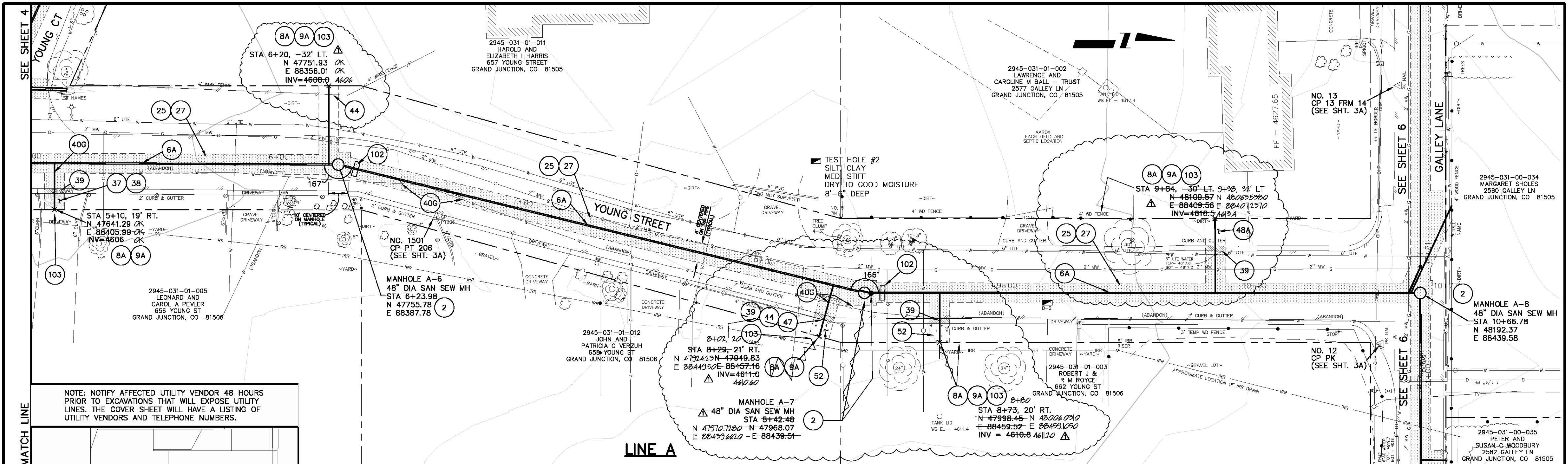


REVISION	DESCRIPTION	DATE	DRAWN BY	DATE
AS BUILT		2008-07	JCS	2005

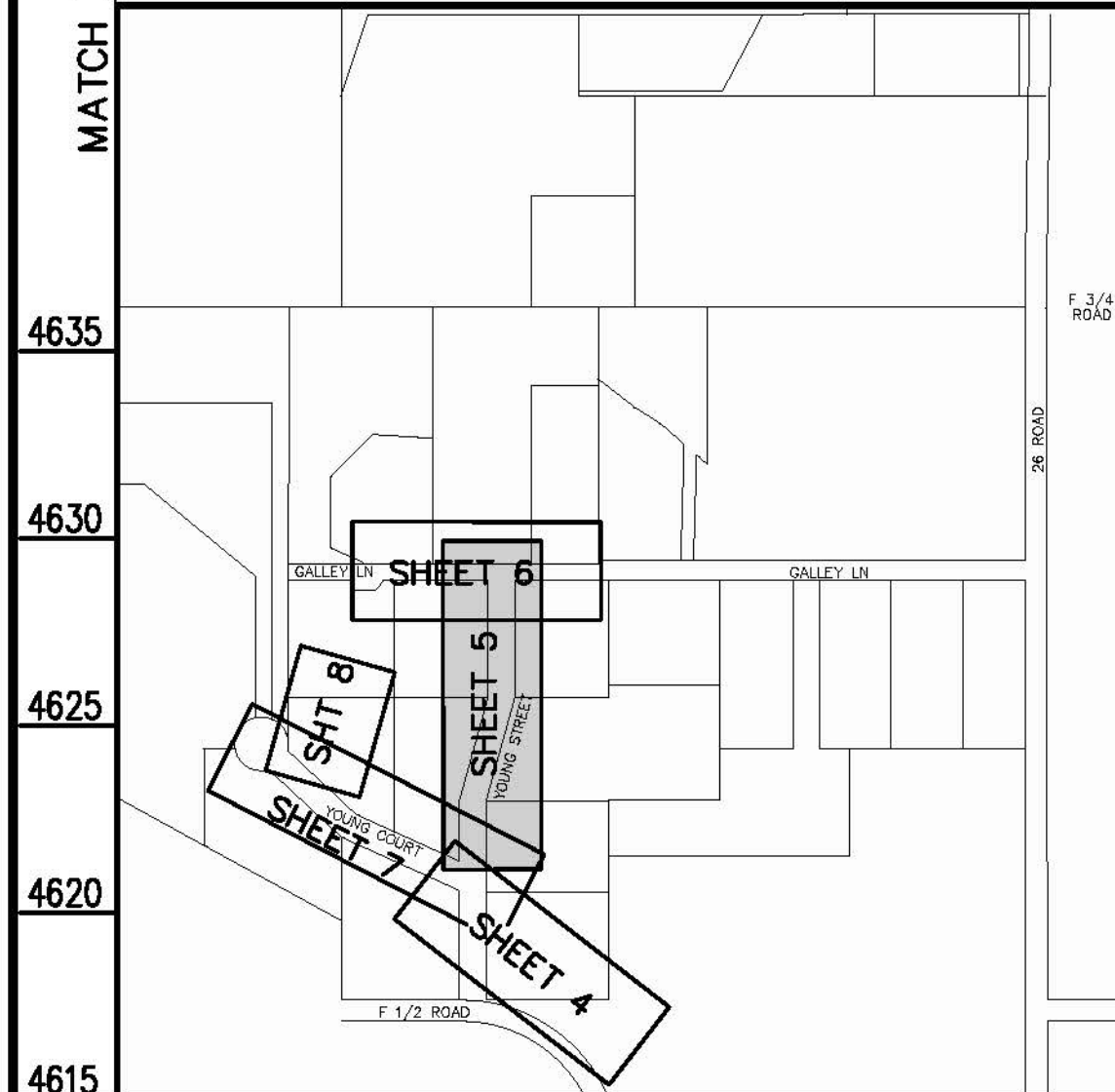


PUBLIC WORKS AND UTILITIES ENGINEERING DIVISION

F 1/2 ROAD TO YOUNG STREET
SANITARY SEWER PLAN AND PROFILE
LINE A, STA 0+00 TO STA 5+00

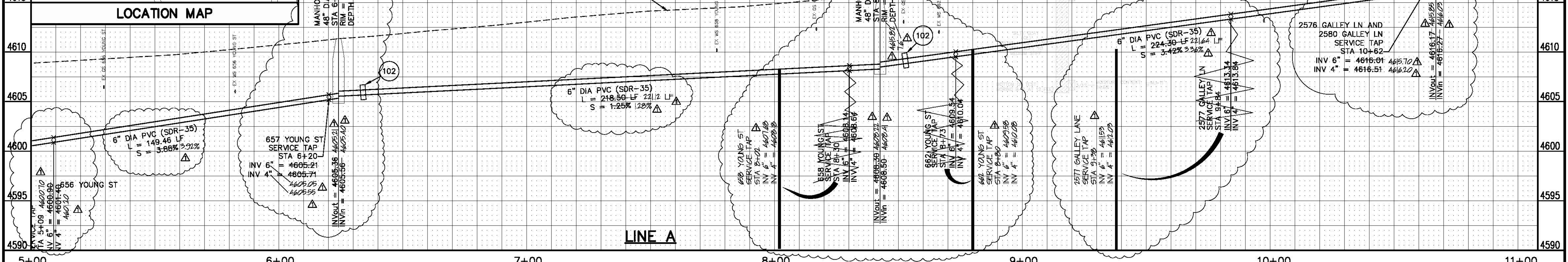


NOTE: NOTIFY AFFECTED UTILITY VENDOR 48 HOURS PRIOR TO EXCAVATIONS THAT WILL EXPOSE UTILITY LINES. THE COVER SHEET WILL HAVE A LISTING OF UTILITY VENDORS AND TELEPHONE NUMBERS.



CONSTRUCTION NOTES

- 2 102.11/108.5 - STANDARD 48" DIAMETER SANITARY SEWER MANHOLE; INCLUDES CONNECTION OF ADJACENT SEWER LINE, FORMING INVERTS AND ADJUSTING TO FINAL GRADE. (SEE CITY OF GRAND JUNCTION STANDARD DETAIL SS-02).
- 6A 102.9A - 6" GRAVITY SEWER PIPE (SDR-35 PVC). INCLUDES TYPE A BEDDING AND HAUNCHING MATERIAL AND BACKFILL OF TRENCH WITH NATIVE MATERIALS MEETING 103.16 EARTH BACKFILL MATERIAL.
- 8A 102/103/104 - 4" SEWER SERVICE TAP, 6" X 4" FULL BODY WYE (SEE STD. DETAIL SS-06).
- 9A 102/103/104 - 4" SDR-35 PVC SANITARY SERVICE LINE WITH NATIVE BACKFILL MEETING 103.16 EARTH BACKFILL MATERIAL. INCLUDES SINGLE SERVICE LINE PER TRENCH, TYPE A BEDDING AND HAUNCHING, AND END-OF-SERVICE CAP.
- 25 103.3 - ASPHALT REMOVAL FOR TRENCH EXCAVATION; CUT AND REMOVE (OR FULL-DEPTH MILL) ASPHALT AS SHOWN.
- 27 103.18/304/401 - PAVEMENT AND ROAD BASE REPLACEMENT ON SIDE STREETS AND DRIVEWAYS; 3" HOT BITUMINOUS PAVEMENT (GRADING SX, PG 64-22 OIL), OVER 6" CLASS 6 ABC (SEE STD. DETAIL GU-03). PAID PER SY.
- 37 304 - 4" CLASS 6 ABC FOR SHOULDERS AND GRAVEL DRIVEWAYS. COMPACTED TO 90% AASHTO T-180.
- 38 703.05 - WASHED ROCK SURFACE COURSE FOR GRAVEL DRIVEWAYS. MATCH EXISTING TYPE. THICKNESS IS 2" MIN AND 3" MAX.
- 39 202/608 - REMOVE AND REPLACE CONCRETE OR ASPHALT CURB AND GUTTER/CURBING/GUTTER/BORDER. SIZE AND STYLE VARY. MATCH EXISTING.
- 40G 202 - REMOVE EXISTING PIPE. CONTRACTOR SHALL REMOVE EXISTING ABANDONED WATER LINE WHERE ENCOUNTERED. IF EXISTING A.C. PIPE IS ENCOUNTERED, THE CONTRACTOR SHALL TAKE CARE TO REMOVE FULL JOINTS OF PIPE, OR AS LARGE OF SECTIONS AS IS PRACTICAL. IF BREAKAGE OF THE PIPE OCCURS, THE PIPE SHALL BE WETTED AND WRAPPED IN PLASTIC. REMOVED A.C. PIPE SHALL BE WRAPPED IN PLASTIC AND TAKEN TO THE LANDFILL.
- 44 210 - RESET FENCE (ALL TYPES).
- 47 210 - RESET IRRIGATION SYSTEM COMPONENTS (PER EACH PROPERTY).
- 48A 210 - RESET LANDSCAPE APPURTENANCES (DECORATIVE ROCK, WOOD CHIPS, TREE BARK). MATCH EXISTING W/ MIN THICKNESS = 2". REUSE EXISTING IF KEPT FREE OF FINES/DETRITUS. LANDSCAPING FABRIC REQUIRED AND INCIDENTAL TO PAY ITEM. PAID PER SY.
- 52 207/212 - SOD. INCLUDES 6" OF STOCKPILED EXISTING TOPSOIL (IF APPROVED BY INSPECTOR/ENGINEER) OR 6" IMPORTED TOPSOIL.
- 101 SPAN/SUPPORT/PROTECT EXISTING STORMWATER/IRRIGATION CULVERT. AMEND BACKFILL WITH BENTONITE POND LINER (MIXED AS PER MFG. SPECIFICATIONS) FOR PLACEMENT AROUND CULVERT (2' ALL SIDES OF PIPE OVER EXPOSED LENGTH) DURING BACKFILL OPERATION. INCIDENTAL TO SEWER INSTALLATION PAY ITEM.
- 102 CLAY CUT-OFF WALL (INCIDENTAL TO SEWER INSTALLATION PAY ITEM).
- 103 CONTRACTOR IS RESPONSIBLE FOR REPAIR COSTS ASSOCIATED WITH ANY/ALL DAMAGE TO PRIVATE PROPERTY BEHIND ROW LINE OR EASEMENT LIMITS.



REVISION	DATE	DESCRIPTION
AS BUILT	2008-07	

DESIGNED BY	JCS	DATE	2005
CHECKED BY		DATE	
APPROVED BY		DATE	

SCALES:

PLAN: 1" = 20'

PROFILE: HORIZONTAL 1" = 20', VERTICAL 1" = 2'

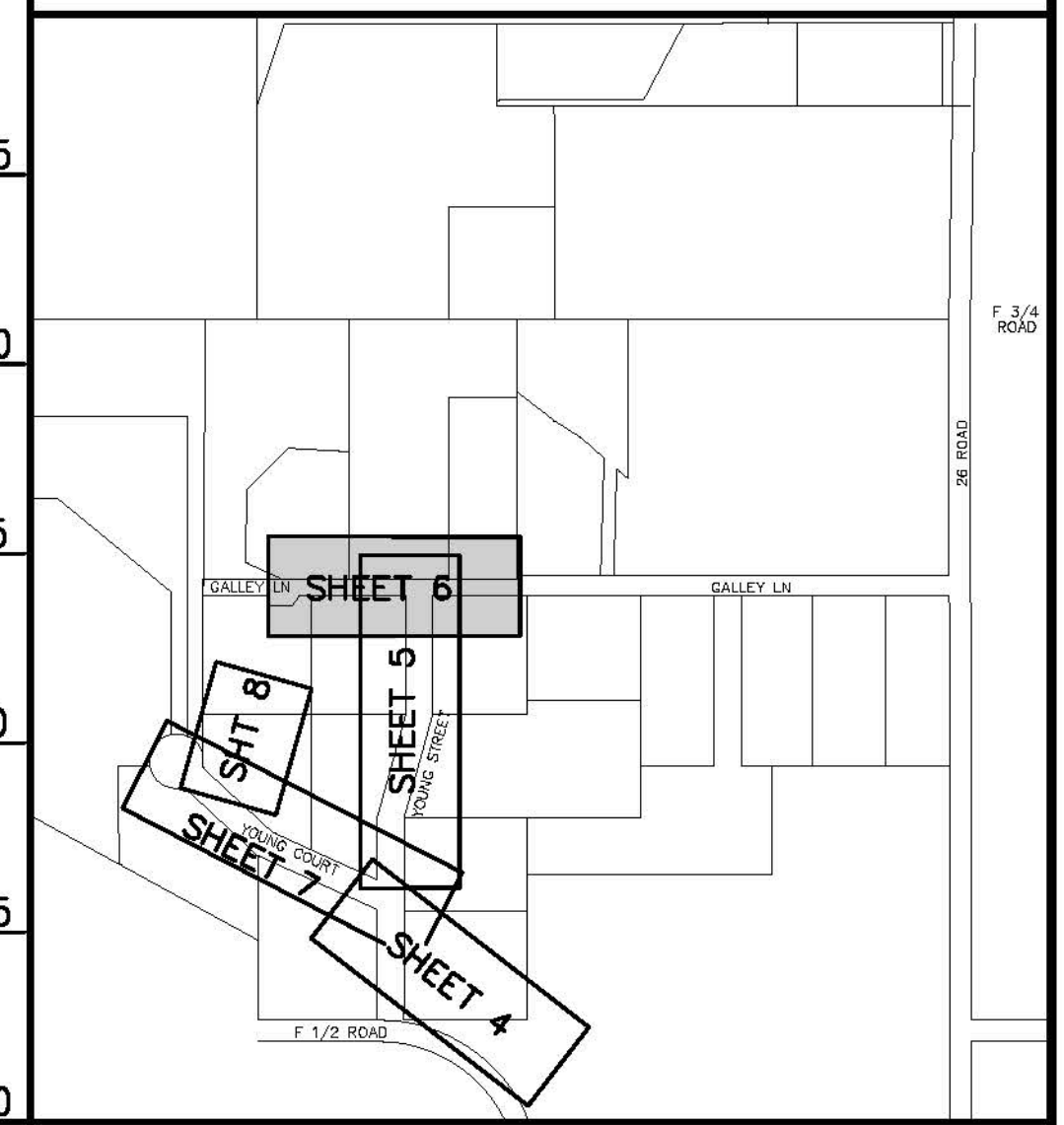
PUBLIC WORKS AND UTILITIES ENGINEERING DIVISION

YOUNG STREET, YOUNG COURT TO GALLEY LANE SANITARY SEWER PLAN AND PROFILES STA 5+00 TO STA 10+00

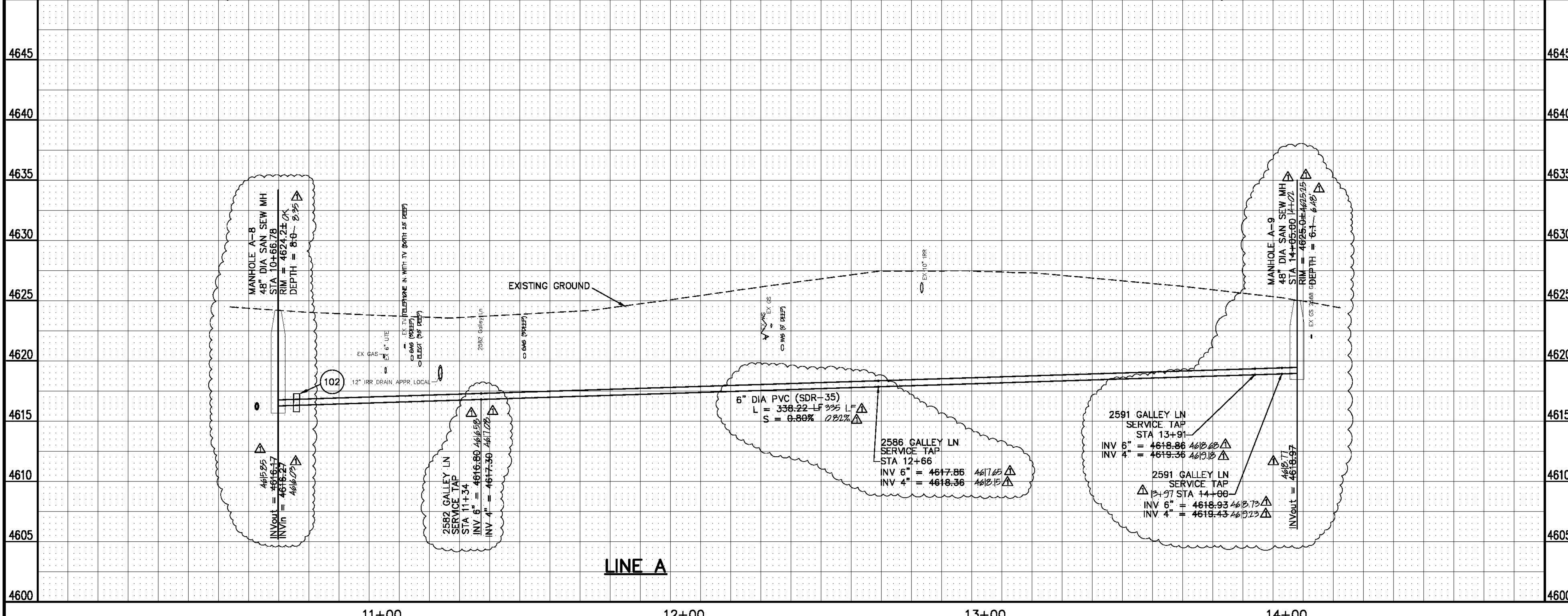
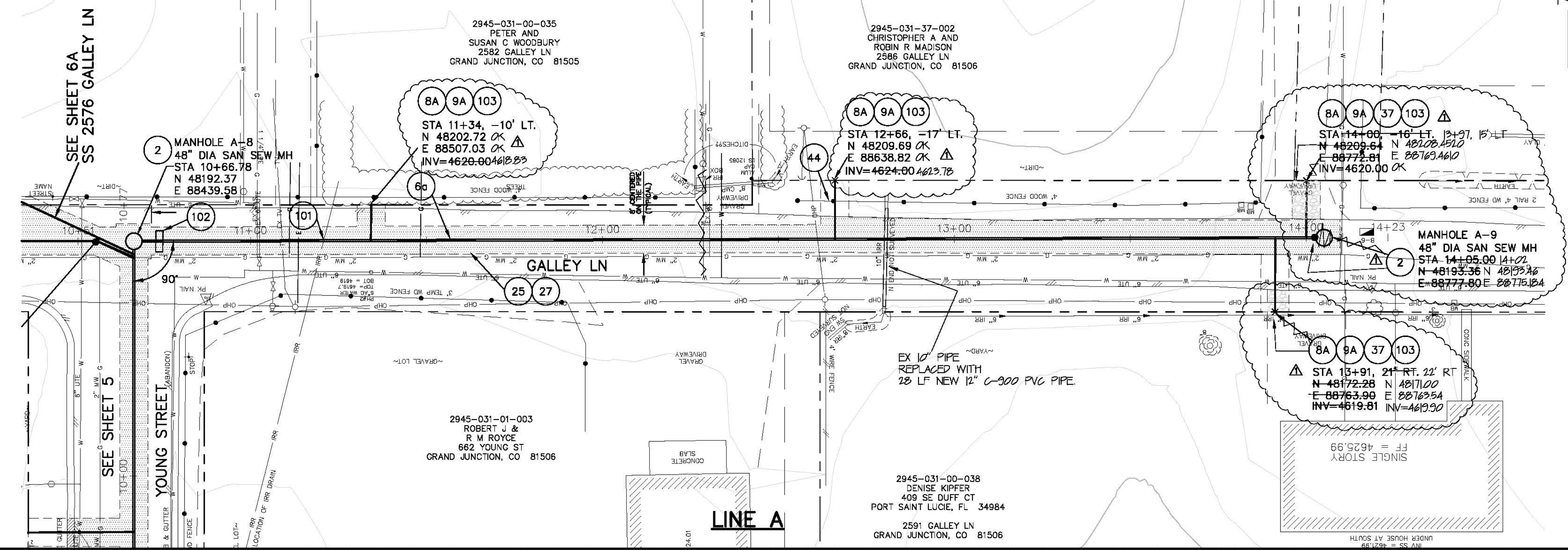
02/12/06 P.D.F. 14060405.TIF

- 2 102.11/108.5 - STANDARD 48" DIAMETER SANITARY SEWER MANHOLE. INCLUDES CONNECTION OF ADJACENT SEWER LINE, FORMING INVERTS AND ADJUSTING TO FINAL GRADE. (SEE CITY OF GRAND JUNCTION STANDARD DETAIL SS-02).
- 6A 102.9A - 6" GRAVITY SEWER PIPE (SDR-35 PVC). INCLUDES TYPE A BEDDING AND HAUNCHING MATERIAL AND BACKFILL OF TRENCH WITH NATIVE MATERIALS MEETING 103.16 EARTH BACKFILL MATERIAL.
- 8A 102/103/104 - 4" SEWER SERVICE TAP, 6" X 4" FULL BODY WYE (SEE STD. DETAIL SS-06).
- 9A 102/103/104 - 4" SDR-35 PVC SANITARY SERVICE LINE WITH NATIVE BACKFILL MEETING 103.16 EARTH BACKFILL MATERIAL. INCLUDES SINGLE SERVICE LINE PER TRENCH, TYPE A BEDDING AND HAUNCHING, AND END-OF-SERVICE CAP.
- 25 103.3 - ASPHALT REMOVAL FOR TRENCH EXCAVATION: CUT AND REMOVE (OR FULL-DEPTH MILL) ASPHALT AS SHOWN.
- 27 103.18/304/401 - PAVEMENT AND ROAD BASE REPLACEMENT ON SIDE STREETS AND DRIVEWAYS: 3" HOT BITUMINOUS PAVEMENT (GRADING SX, PG 64-22 OIL), OVER 6" CLASS 6 ABC (SEE STD. DETAIL GU-03). PAID PER SY.
- 37 304 - 4" CLASS 6 ABC FOR SHOULDERS AND GRAVEL DRIVEWAYS. COMPACTED TO 90% AASHTO T-180.
- 44 210 - RESET FENCE (ALL TYPES).
- 101 SPAN/SUPPORT/PROTECT EXISTING STORMWATER/IRRIGATION CULVERT. AMEND BACKFILL WITH BENTONITE POND LINER (MIXED AS PER MFG. SPECIFICATIONS) FOR PLACEMENT AROUND CULVERT (2' ALL SIDES OF PIPE OVER EXPOSED LENGTH) DURING BACKFILL OPERATION. INCIDENTAL TO SEWER INSTALLATION PAY ITEM.
- 102 CLAY CUT-OFF WALL (INCIDENTAL TO SEWER INSTALLATION PAY ITEM).
- 103 CONTRACTOR IS RESPONSIBLE FOR REPAIR COSTS ASSOCIATED WITH ANY/ALL DAMAGE TO PRIVATE PROPERTY BEHIND ROW LINE OR EASEMENT LIMITS.

NOTE: NOTIFY AFFECTED UTILITY VENDOR 48 HOURS PRIOR TO EXCAVATIONS THAT WILL EXPOSE UTILITY LINES. THE COVER SHEET WILL HAVE A LISTING OF UTILITY VENDORS AND TELEPHONE NUMBERS.

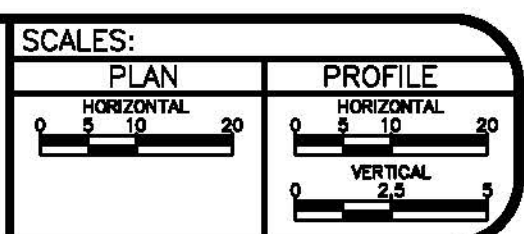


LOCATION MAP



REVISION	DESCRIPTION	DATE	DRAWN BY	DATE
AS BUILT		2008-01	JCS	2007

DESIGNED BY	DATE
CHECKED BY	DATE
APPROVED BY	DATE



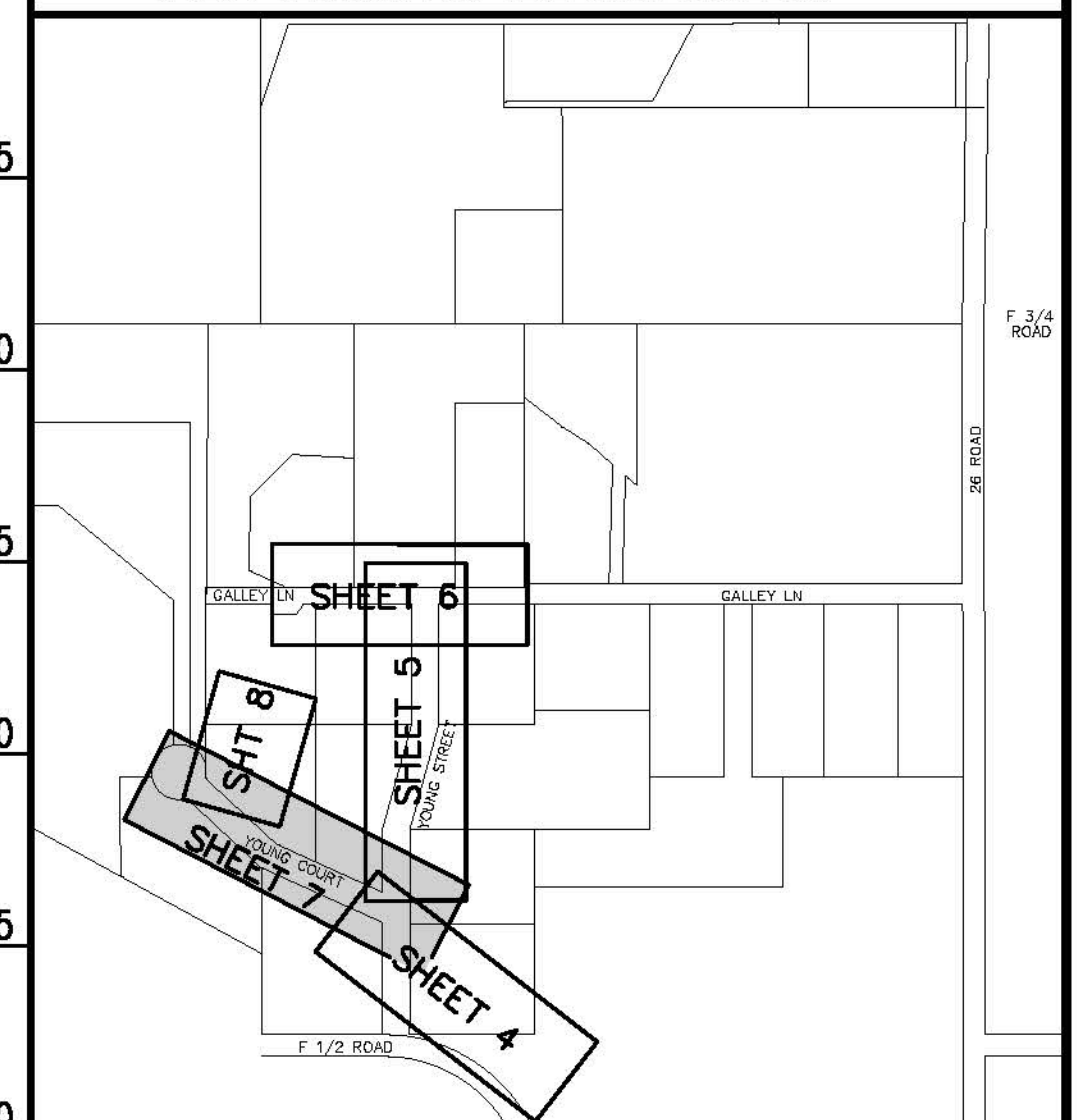
PUBLIC WORKS AND UTILITIES ENGINEERING DIVISION

**GALLEY LANE FROM YOUNG ST 400'± EAST
SANITARY SEWER PLAN AND PROFILES
LINE D STA 1+00 TO STA 3+00**

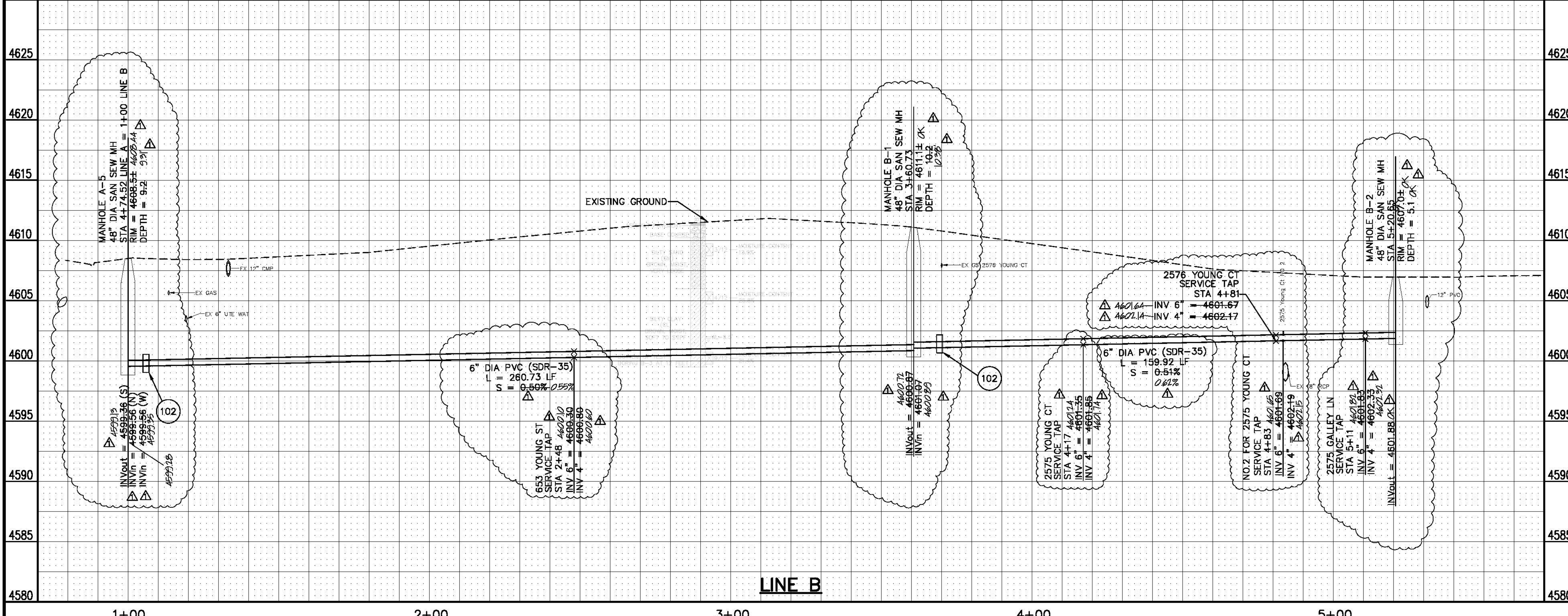
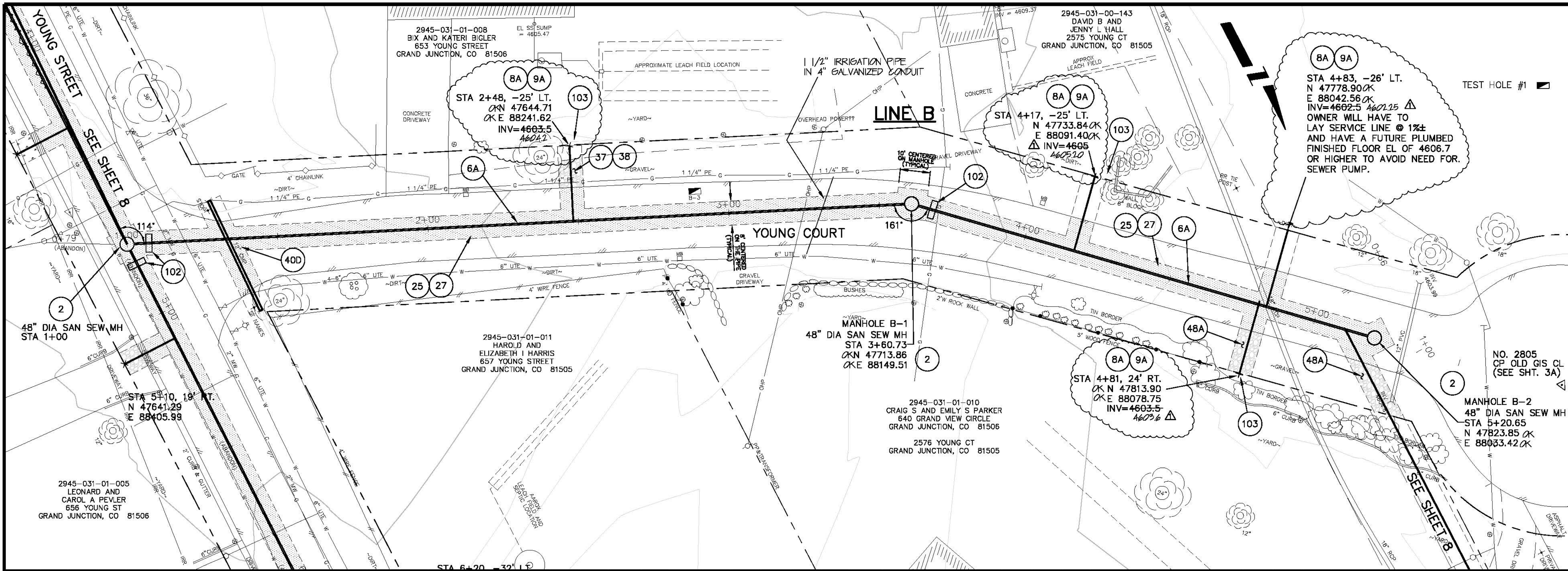
CONSTRUCTION NOTES

- 2 102.11/108.5 - STANDARD 48" DIAMETER SANITARY SEWER MANHOLE. INCLUDES CONNECTION OF ADJACENT SEWER LINE, FORMING INVERTS AND ADJUSTING TO FINAL GRADE. (SEE CITY OF GRAND JUNCTION STANDARD DETAIL SS-02).
- 6A 102.9A - 6" GRAVITY SEWER PIPE (SDR-35 PVC). INCLUDES TYPE A BEDDING AND HAUNCHING MATERIAL AND BACKFILL OF TRENCH WITH NATIVE MATERIALS MEETING 103.16 EARTH BACKFILL MATRIAL.
- 8A 102/103/104 - 4" SEWER SERVICE TAP, 6" X 4" FULL BODY WYE (SEE STD. DETAIL SS-06).
- 9A 102/103/104 - 4" SDR-35 PVC SANITARY SERVICE LINE WITH NATIVE BACKFILL MEETING 103.16 EARTH BACKFILL MATERIAL. INCLUDES SINGLE SERVICE LINE PER TRENCH, TYPE A BEDDING AND HAUNCHING, AND END-OF-SERVICE CAP.
- 25 103.3 - ASPHALT REMOVAL FOR TRENCH EXCAVATION: CUT AND REMOVE (OR FULL-DEPTH MILL) ASPHALT AS SHOWN.
- 27 103.18/304/401 - PAVEMENT AND ROAD BASE REPLACEMENT ON SIDE STREETS AND DRIVEWAYS: 3" HOT BITUMINOUS PAVEMENT (GRADING SX, PG 64-22 OIL), OVER 6" CLASS 6 ABC (SEE STD. DETAIL GU-03). PAID PER SY.
- 37 304 - 4" CLASS 6 ABC FOR SHOULDERS AND GRAVEL DRIVEWAYS. COMPACTED TO 90% AASHTO T-180.
- 38 703.05 - WASHED ROCK SURFACE COURSE FOR GRAVEL DRIVEWAYS. MATCH EXISTING TYPE. THICKNESS IS 2" MIN AND 3" MAX.
- 40D 202/102.10 - REMOVE EXISTING STORMWATER/IRRIGATION CULVERT. REPLACE WITH 12" C-900 DR-14. TRENCH WIDTH = OD+12" MIN; =OD+18" MAX. INSTALL TYPE A BEDDING MATERIAL TO SPRINGLINE; FLOWFILL SPRINGLINE TO BASE OF ASPHALT (100 LBS CEMENT/CY)
- 48A 210 - RESET LANDSCAPE APPURTENANCES (DECORATIVE ROCK, WOOD CHIPS, TREE BARK). MATCH EXISTING W/ MIN THICKNESS = 2". REUSE EXISTING IF KEPT FREE OF FINES/DETRITUS. LANDSCAPING FABRIC REQUIRED AND INCIDENTAL TO PAY ITEM. PAID PER SY.
- 102 CLAY CUT-OFF WALL (INCIDENTAL TO SEWER INSTALLATION PAY ITEM).
- 103 CONTRACTOR IS RESPONSIBLE FOR REPAIR COSTS ASSOCIATED WITH ANY/DAMAGE TO PRIVATE PROPERTY BEHIND ROW LINE OR EASEMENT LIMITS.

NOTE: NOTIFY AFFECTED UTILITY VENDOR 48 HOURS PRIOR TO EXCAVATIONS THAT WILL EXPOSE UTILITY LINES. THE COVER SHEET WILL HAVE A LISTING OF UTILITY VENDORS AND TELEPHONE NUMBERS.

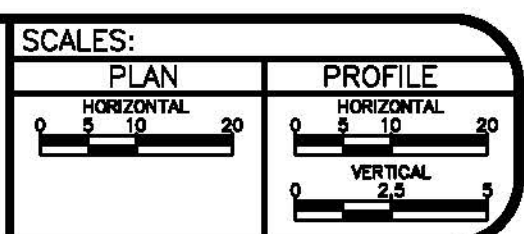


LOCATION MAP



REVISION	DESCRIPTION	DATE	DRAWN BY	DATE
AS BUILT		2008-07	JCS	2005

DESIGNED BY	DATE
CHECKED BY	DATE
APPROVED BY	DATE

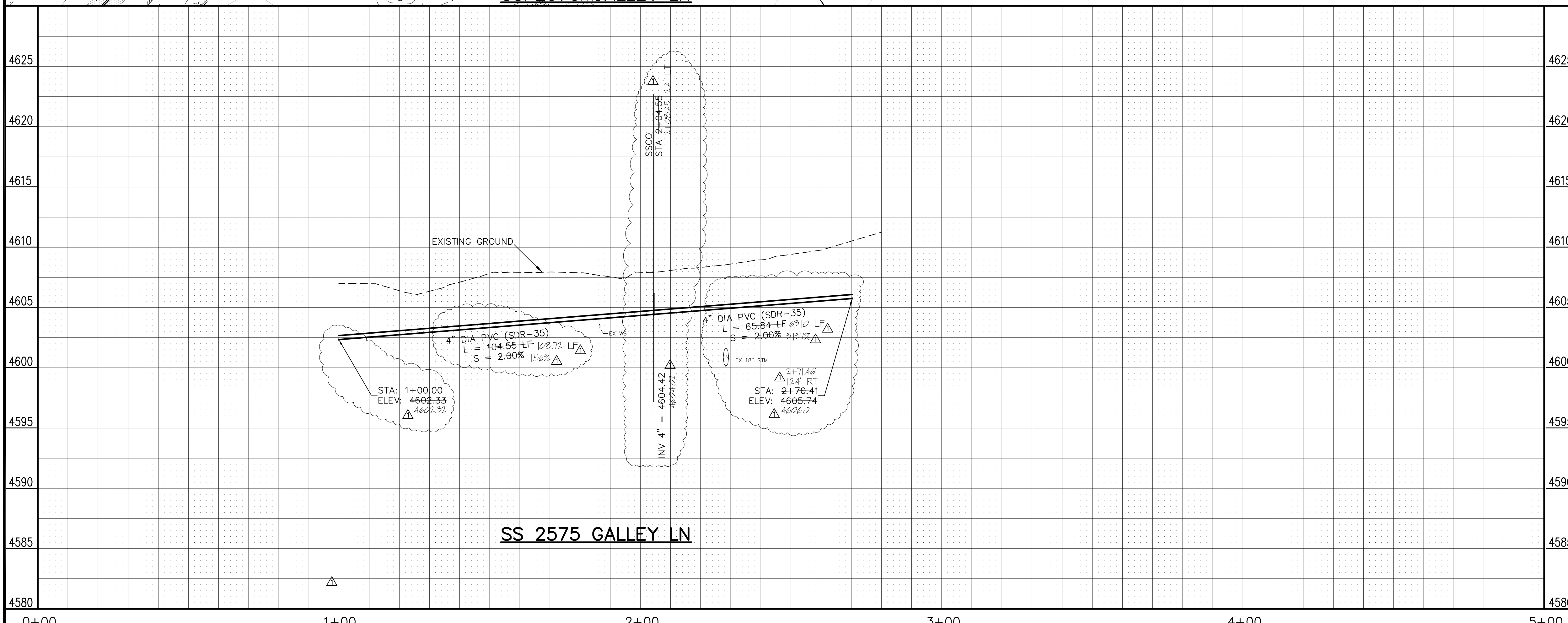
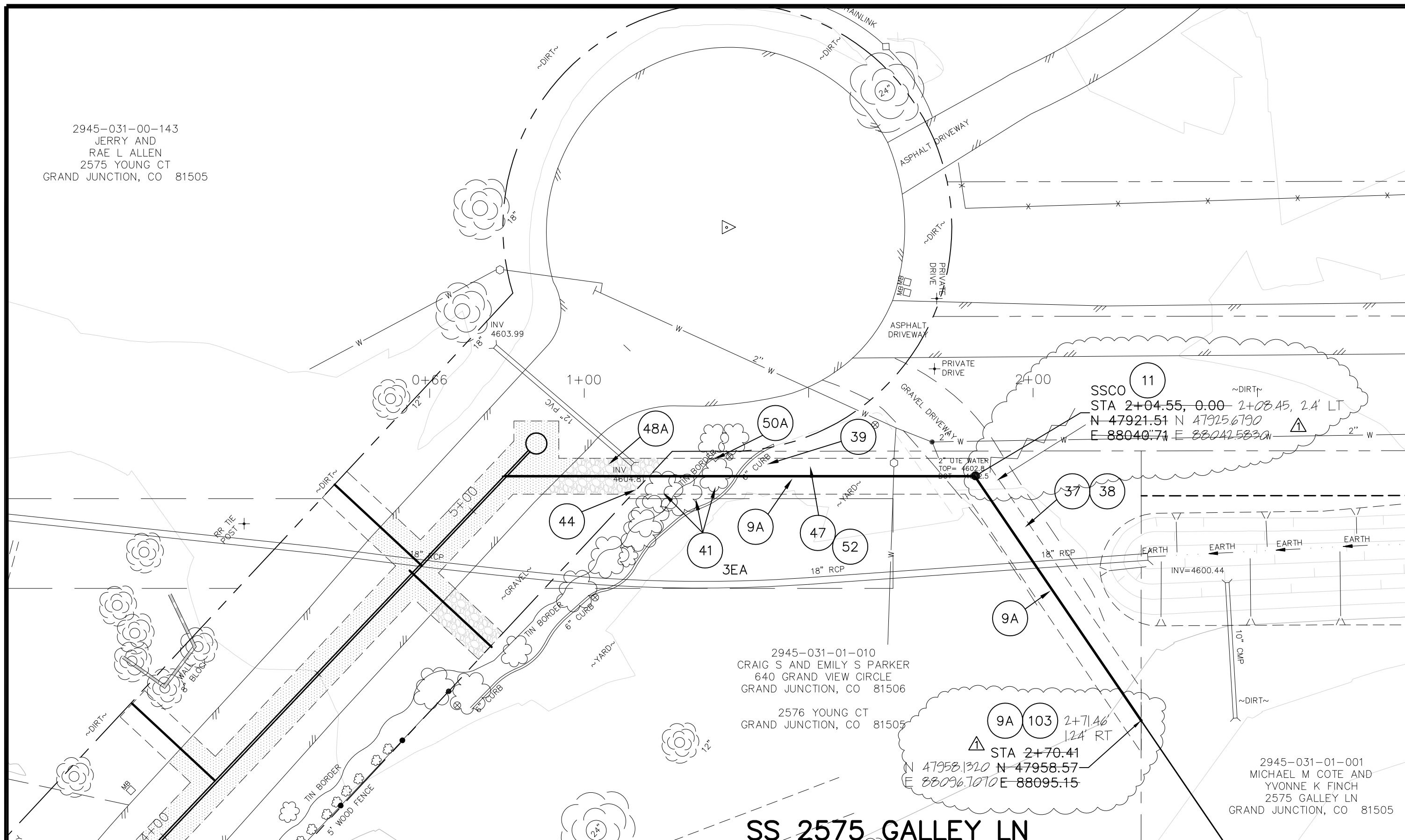


PUBLIC WORKS AND UTILITIES ENGINEERING DIVISION

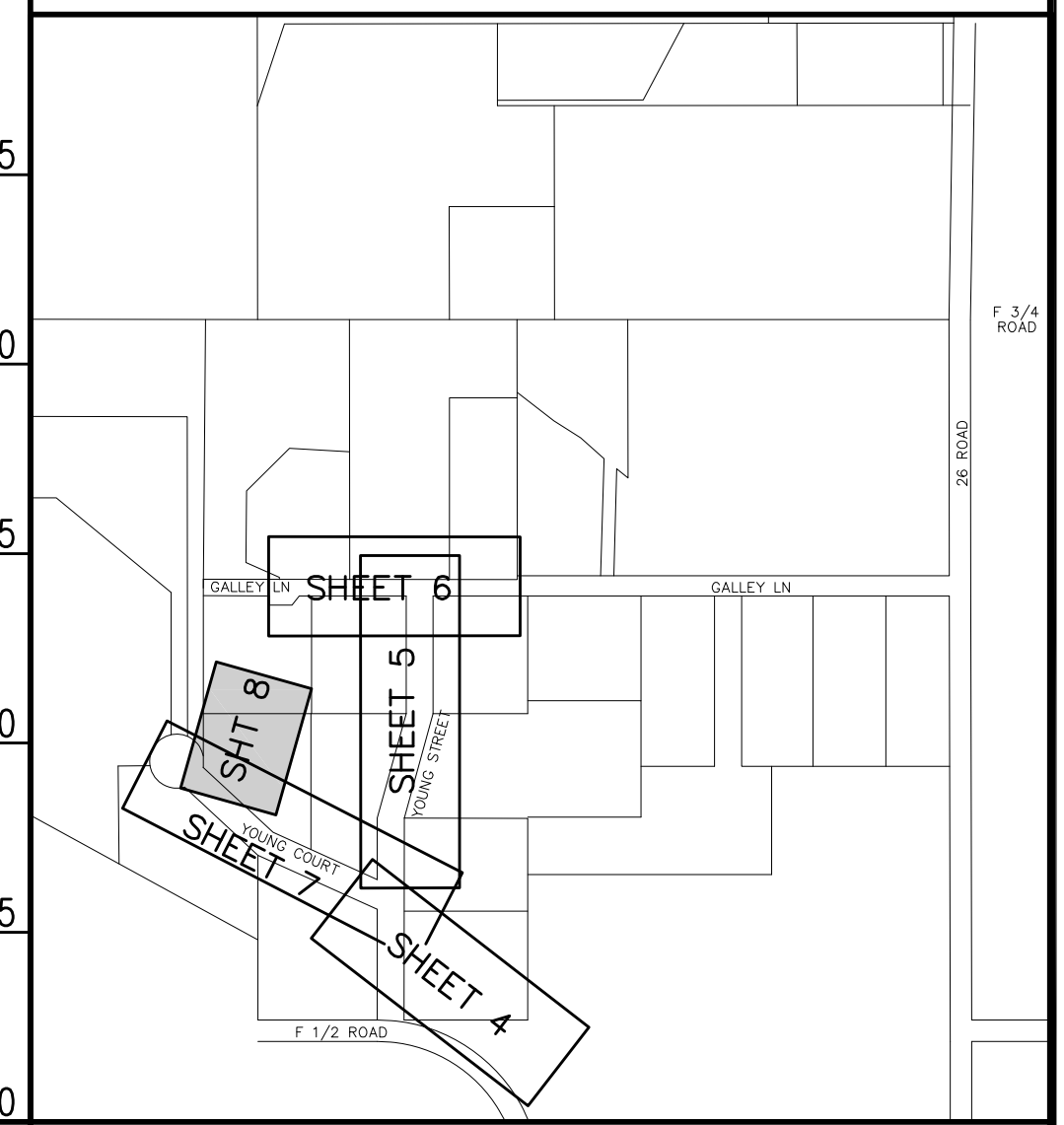
**YOUNG COURT, FROM YOUNG STREET TO THE END OF YOUNG CT
SANITARY SEWER PLAN AND PROFILES
LINE B STA 0+00 TO STA 6+00**

CONSTRUCTION NOTES

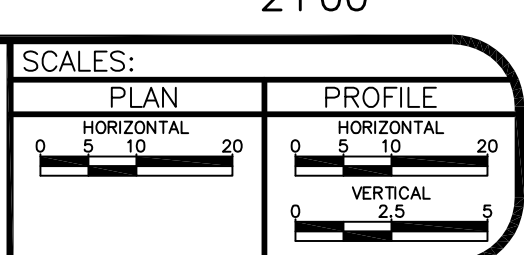
- 9A 102/103/104 - 4" SDR-35 PVC SANITARY SERVICE LINE WITH NATIVE BACKFILL MEETING 103.16 EARTH BACKFILL MATERIAL. INCLUDES SINGLE SERVICE LINE PER TRENCH, TYPE A BEDDING AND HAUNCHING, AND END-OF-SERVICE CAP.
- 11 104.2.B - INSTALL 2-WAY SANITARY SEWER SERVICE CLEANOUT (STD. DETAIL SS-07). INCLUDES CLEANOUT RING AND COVER AND CONCRETE COLLAR IN UNPAVED AREAS (SEE STD. DETAIL SS-07).
- 37 304 - 4" CLASS 6 ABC FOR SHOULDERS AND GRAVEL DRIVEWAYS. COMPACTED TO 90% AASHTO T-180.
- 38 703.05 - WASHED ROCK SURFACE COURSE FOR GRAVEL DRIVEWAYS. MATCH EXISTING TYPE. THICKNESS IS 2" MIN AND 3" MAX.
- 39 202/608 - REMOVE AND REPLACE CONCRETE OR ASPHALT CURB AND GUTTER/CURBING/GUTTER/BORDER. SIZE AND STYLE VARY. MATCH EXISTING.
- 41 202 - REMOVE BUSH.
- 44 210 - RESET FENCE (ALL TYPES).
- 47 210 - RESET IRRIGATION SYSTEM COMPONENTS (PER EACH PROPERTY).
- 48A 210 - RESET LANDSCAPE APPURTENANCES (DECORATIVE ROCK, WOOD CHIPS, TREE BARK). MATCH EXISTING W/ MIN THICKNESS = 2". REUSE EXISTING IF KEPT FREE OF FINES/DETRITUS. LANDSCAPING FABRIC REQUIRED AND INCIDENTAL TO PAY ITEM. PAID PER SY.
- 50A 210 - RESET METAL EDGER.
- 52 207/212 - SOD. INCLUDES 6" OF STOCKPILED EXISTING TOPSOIL (IF APPROVED BY INSPECTOR/ENGINEER) OR 6" IMPORTED TOPSOIL.
- 103 CONTRACTOR IS RESPONSIBLE FOR REPAIR COSTS ASSOCIATED WITH ANY/ALL DAMAGE TO PRIVATE PROPERTY BEHIND ROW LINE OR EASEMENT LIMITS.



NOTE: NOTIFY AFFECTED UTILITY VENDOR 48 HOURS PRIOR TO EXCAVATIONS THAT WILL EXPOSE UTILITY LINES. THE COVER SHEET WILL HAVE A LISTING OF UTILITY VENDORS AND TELEPHONE NUMBERS.



REVISION	DESCRIPTION	DATE	DRAWN BY	DATE
AS BUILT		2008-07	JCS	2007

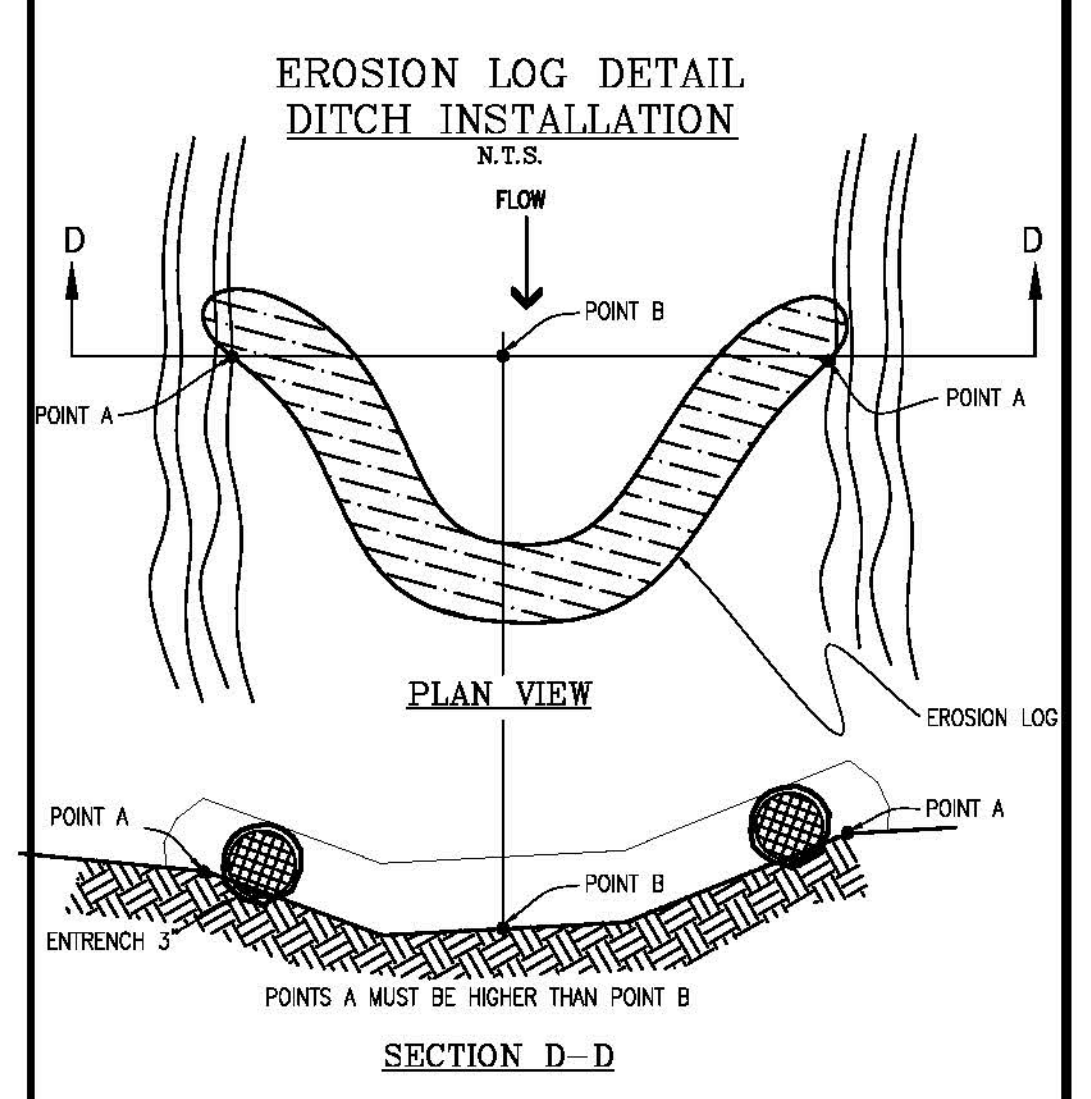
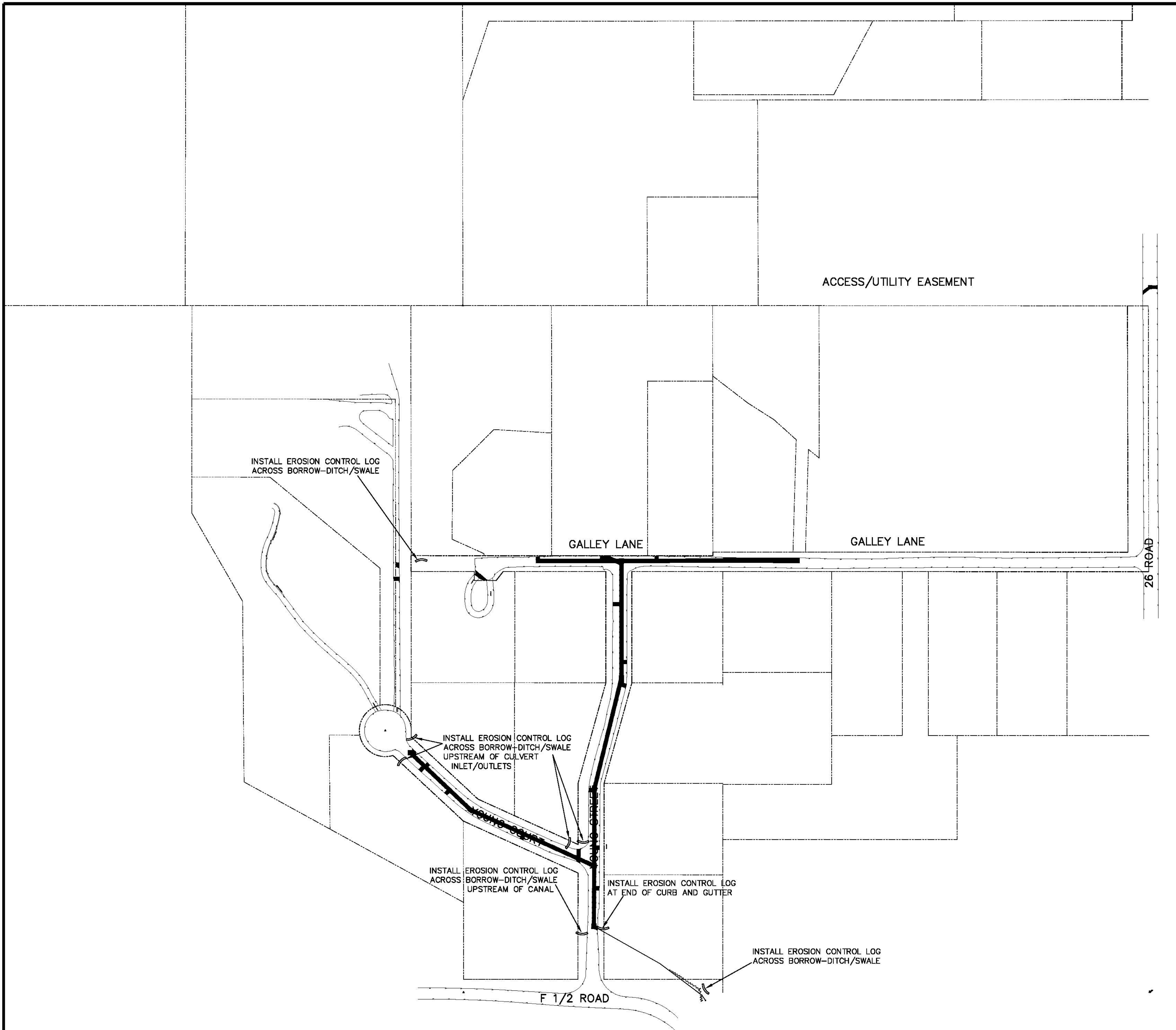
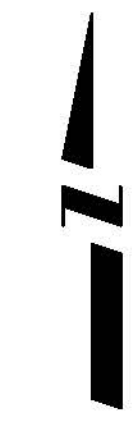


PUBLIC WORKS AND UTILITIES ENGINEERING DIVISION

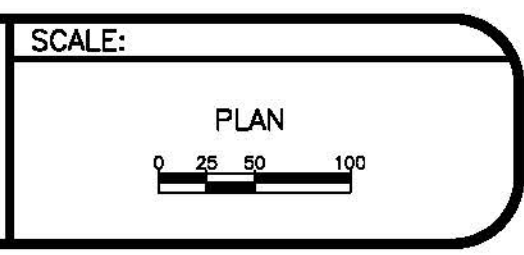
**SEWER SERVICE 2575 GALLEY LN
SANITARY SEWER PLAN AND PROFILE
STA 1+00 TO STA 3+00**

N:\LandProj\F48221\Galley Lane STD\dwg\CIVIL 3D DWG\2008-07 as built.dwg (SS 2575 GALLEY), 7/3/2008 4:47:59 PM

- Performance Standards**
 The general requirements for erosion control work shall be as follows:
1. All grading shall be designed, constructed and completed in such a manner so that exposed area of any disturbed land shall be limited to the shortest time period.
 2. Temporary erosion control facilities shall be removed and all disturbed areas graded and stabilized with permanent soil erosion control measures pursuant to approved plans and specifications.
- During Construction (Temporary Measures)**
1. Erosion Logs: The use of a single row of erosion logs shall be installed from the edge of ditch or swale unless specified otherwise. Installation shall be in accordance with the detail as shown on the plans. All stockpiles of construction earth materials and excavation spoil must be encircled with erosion control logs during any/all storm events generating runoff.
- After Construction (Permanent Measures)**
1. Landscaping / Seeding: All disturbed areas not otherwise landscaped or paved shall be hydroseeded as per plans and project specifications.
- Maintenance**
1. The Contractor shall conduct routine checks of all erosion control measures to determine if repairs or sediment removal is necessary.
 2. After each rainfall or moderate snow melt, erosion control measures are to be checked. The Contractor shall be responsible for maintaining all erosion control measures.
 3. Silt and sediment shall be removed after each substantial rainfall. Deposits must be removed when they reach a height of one-half of the barrier.
 4. When temporary measures are to be removed, any silt and sediment deposits shall be removed and spread evenly in open areas and seeded as necessary.
- General Notes**
1. At all times during construction, erosion and sediment control shall be maintained by the Contractor.
 2. Details shown are schematic only. Adjust as necessary to fit field conditions.
 3. Erosion logs shall be placed to avoid runoff flowing between, around or under logs. Siles shall be anchored with 2" x 2" x 2" wooden stakes or #4 reinforcing bars, two per log (see details for further instructions).
 4. The Contractor shall have a water truck available at all times to assist in controlling dust and wind erosion.



REVISION	DESCRIPTION	DATE	DRAWN BY	DATE
REVISION			JCS	2005
REVISION				
REVISION				
REVISION				



**PUBLIC WORKS
 AND UTILITIES
 ENGINEERING DIVISION**

**GALLEY LANE NEIGHBORHOOD S.I.D.
 STORM WATER MANAGEMENT PLAN**

02/26/09 PDF
 14066409-TIF

9

N:\Landscape\48222\Galley Lane S.I.D.\DWG\2008-07 as built.dwg, 9(SWMP), 7/3/2008 4:46:50 PM