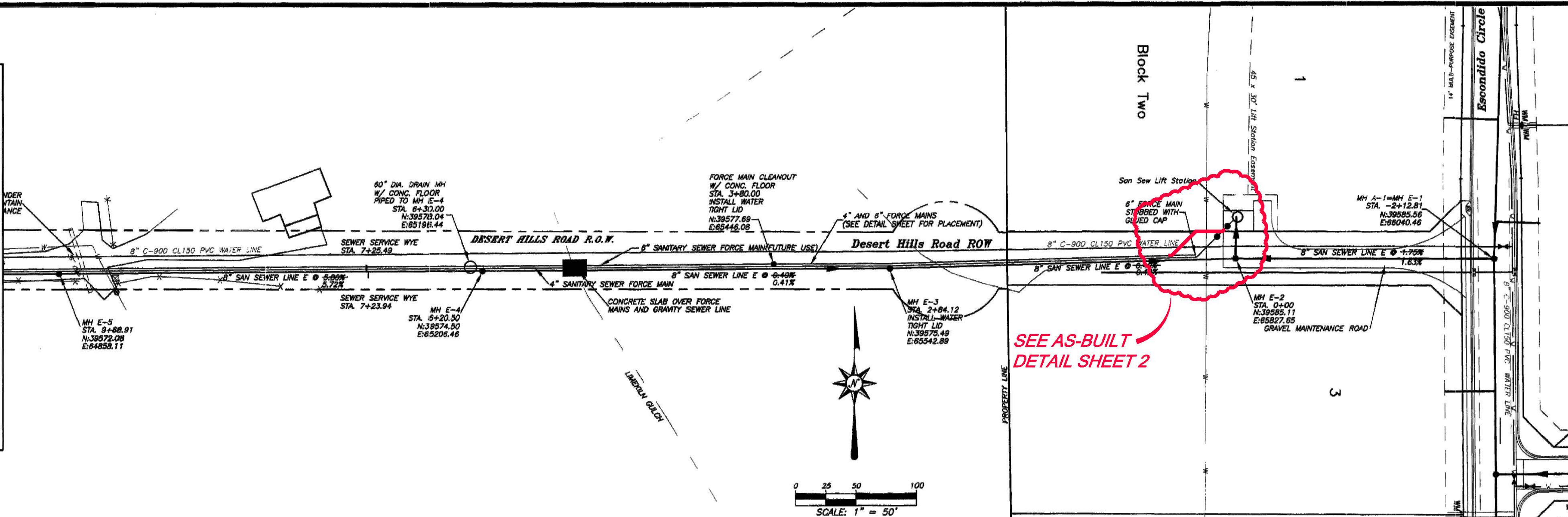
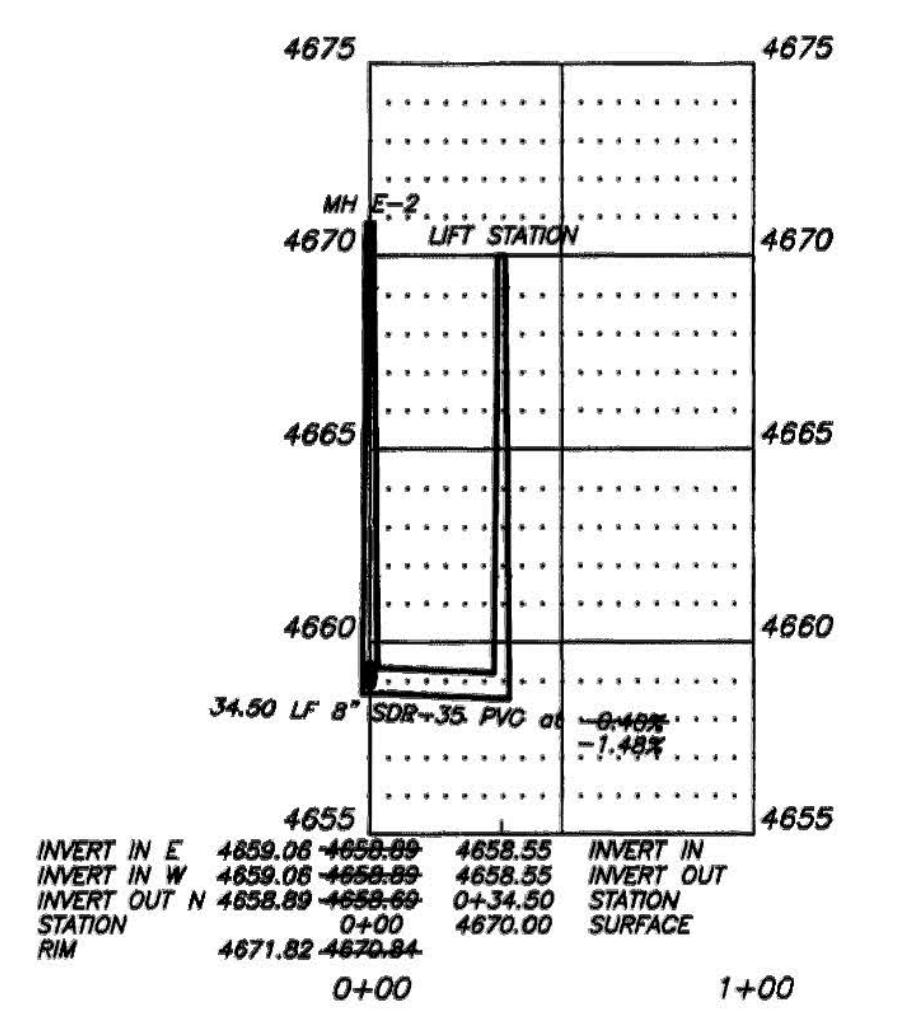


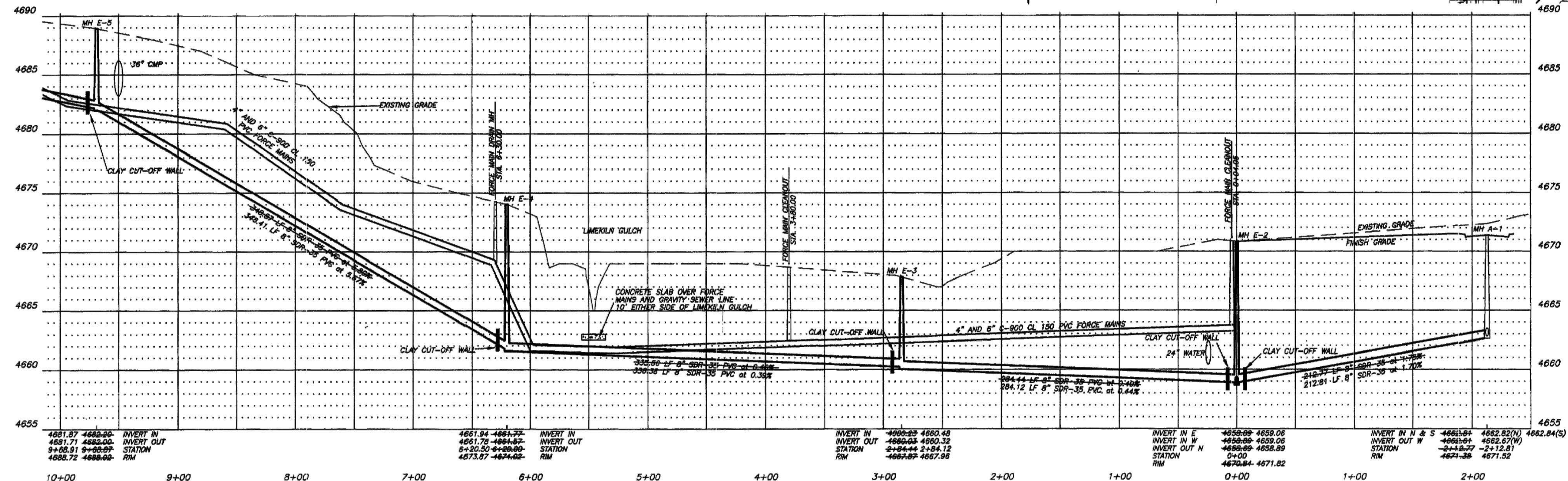
KEY MAP



SCALE: 1" = 50'



SANITARY SEWER LINE TO LIFT STATION
HORIZONTAL SCALE: 1" = 50'
VERTICAL SCALE: 1" = 5'



SANITARY SEWER LINE E -2+12.81 TO 9+68.91
HORIZONTAL SCALE: 1" = 50'
VERTICAL SCALE: 1" = 5'

RECORD DRAWING

CERTIFICATION OF THESE RECORD DRAWINGS BY A REGISTERED PROFESSIONAL ENGINEER DOES NOT CONSTITUTE CERTIFICATION THAT THE IMPROVEMENTS SHOWN ON THESE DRAWINGS WERE BUILT IN ACCORDANCE WITH THE APPROVED PLANS OR IN ACCORDANCE WITH THE STANDARDS AND REQUIREMENTS OF THE ACCEPTING AGENCY OR ENTITY. THE INTENT OF THESE RECORD DRAWINGS IS TO PROVIDE REPRESENTATION OF THE PHYSICAL LOCATION OF THE IMPROVEMENTS AND THE TYPES OF MATERIALS INSTALLED.

AS-BUILT 6/1/2009
SHEET 1 of 2

SEWER COLLECTION SYSTEM IMPROVEMENTS SHOWN ON THIS SHEET WERE INSTALLED JANUARY 2001 BY BEN DOWD EXCAVATING, INC. OF CLIFTON, COLORADO

BENCHMARK:
GLO BRASS CAP 1918
NW CORNER
NE 1/4 NW 1/4
SECTION 26
T1S, R101W, 8th P.M.
N: 39584.98
E: 85638.48
ELEV. 4670.10

CITY OF GRAND JUNCTION ENGINEERING

APPROVED FOR CONSTRUCTION FOR ONE YEAR FROM THIS DATE.

BY: _____ DATE: _____

ACCEPTED AS CONSTRUCTED

BY: _____ DATE: _____

REVISIONS:

NO.	DATE	DESCRIPTION
1	03/13/01	RECORD DRAWING

DATE: 03/13/01

SANITARY SEWER LINE E -2+12.81 TO 9+68.91

PLAN AND PROFILE

PROJECT NO.: 98117

FILE NAME: 98117-sewers-record

DESERT HILLS ESTATES RECORD DRAWING

LANDesign ENGINEERS • SURVEYORS • PLANNERS
244 NORTH 7TH STREET
GRAND JUNCTION, COLORADO 81501 (970) 245-4099

CITY OF GRAND JUNCTION ENGINEERING

APPROVED FOR CONSTRUCTION FOR ONE YEAR FROM THIS DATE.

BY: _____ DATE: _____

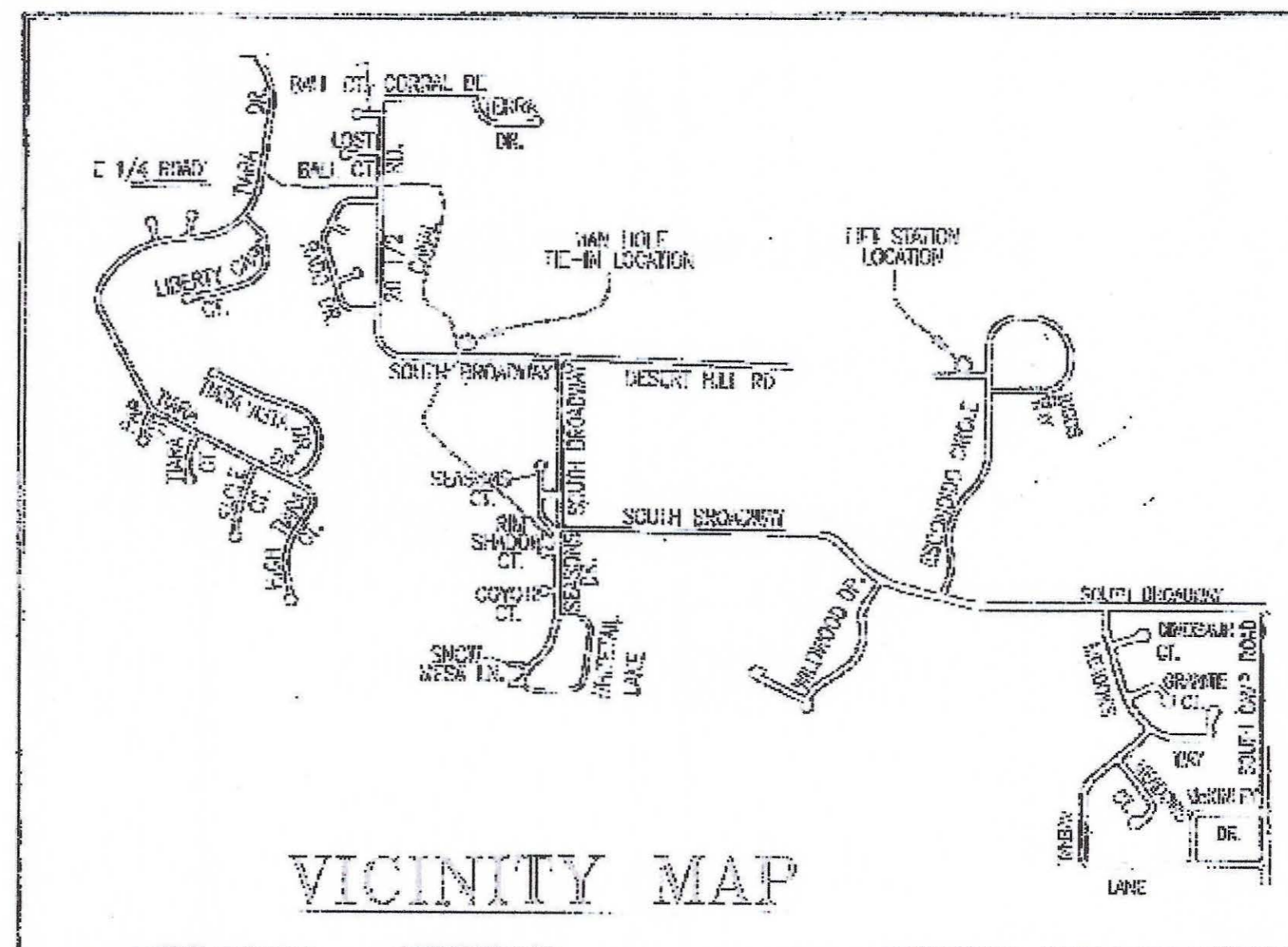
ACCEPTED AS CONSTRUCTED

BY: _____ DATE: _____

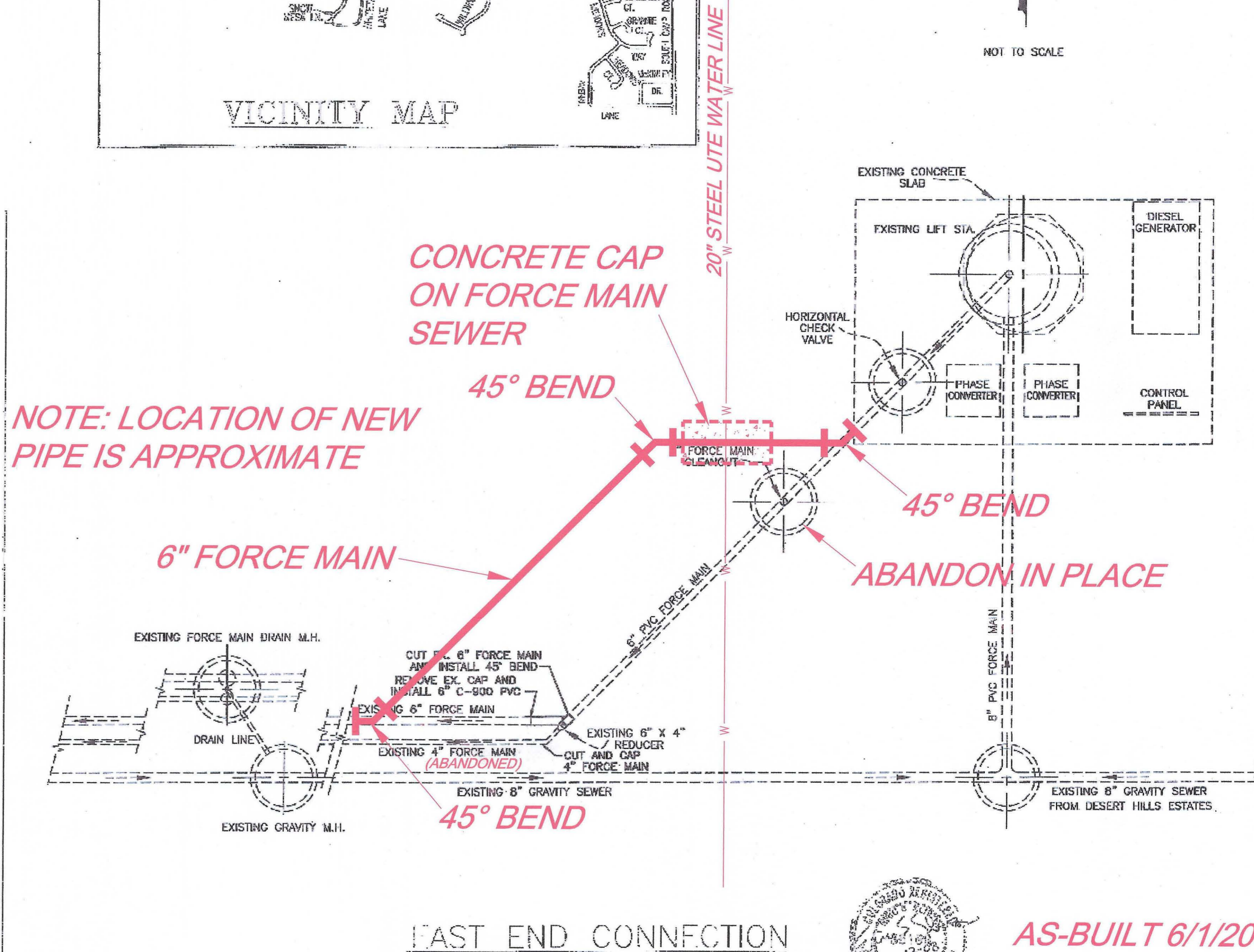
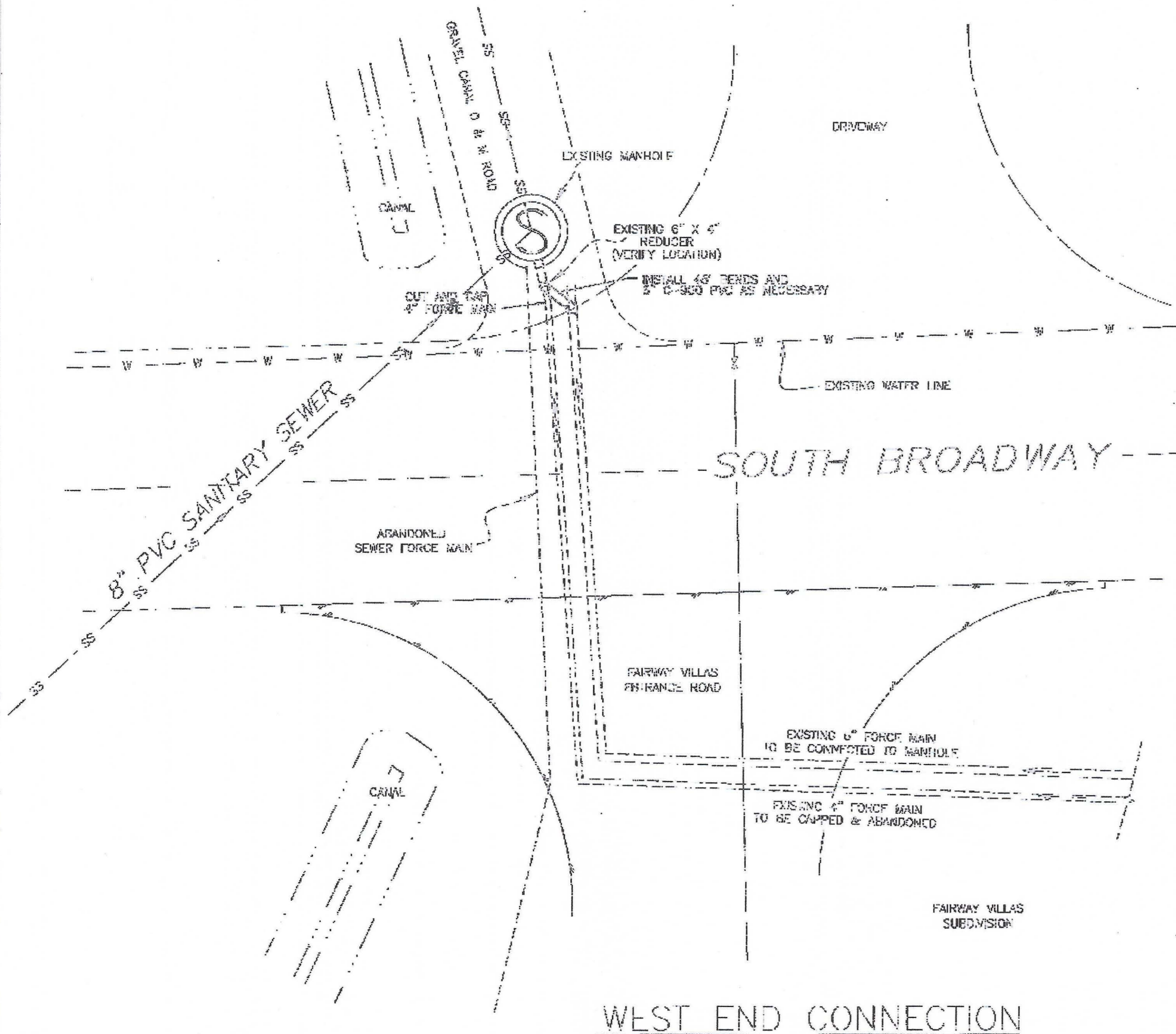
SHEET 11 OF 32

NOTES:

1. DO NOT MAKE ANY FIELD MODIFICATIONS UNTIL CLEARED TO PROCEED BY THE CITY OF GRAND JUNCTION PUBLIC WORKS DEPT.
2. COORDINATE ALL SEWER FORCE MAIN MODIFICATIONS WITH THE CITY OF GRAND JUNCTION PUBLIC WORKS DEPT.
3. DISCONNECT LIFT STATION POWER AT CONTROL PANEL.
4. DRAIN 4" FORCE MAIN AND FLUSH WITH CLEAN WATER THROUGH EXISTING DRAIN MAN HOLE & CLEANOUT MAN HOLE BY LIFT STATION.
5. CONTRACTOR TO EXPOSE AND VERIFY EXISTING CONDITIONS. DISCONNECT EXISTING 4" FORCE MAIN AND 6"x4" REDUCERS THEN CAP ABANDONED 4" MAIN AT BOTH ENDS.
6. MAKE REQUIRED CONNECTIONS TO EXISTING 8" FORCE MAIN AND 8" STUB AT WEST MANHOLE. FORCE MAIN SHALL BE CLASS 150 C-900 PVC. ALL FITTINGS SHALL BE SOLVENT WELD PVC FITTINGS MANUFACTURED FOR C-900 PIPE.
7. INSTALL THRUST BLOCKS AT EACH FITTING AS PER CITY OF GRAND JUNCTION STANDARD SPECIFICATIONS.



NOT TO SCALE

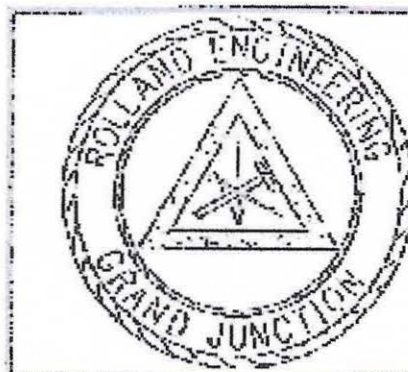


NOTE: LOCATION OF NEW PIPE IS APPROXIMATE



AS-BUILT 6/1/2009
SHEET 2 of 2

CALL UTILITY NOTIFICATION
CENTER OF COLORADO
1-800-922-1987
CALL 2 BUSINESS DAYS IN ADVANCE
BEFORE YOU DIG, GRADE, OR EXCAVATE
FOR THE MARKING OF UNDERGROUND
MEMBER UTILITIES.



ROLLAND ENGINEERING
405 Ridge Ave.
Grand Jct., CO 81501
(970) 243-3300

File Name: C:\5028\5028-final\crca\main.DWG			
FAIRWAY VILLAS SANITARY SEWER FORCE MAIN MODIFICATIONS (OFFSITE)			
Designed: ESS	Checked: FSS	Drawn: BUZB	Sheet: 22
Drawn: PJW	Date: 10/10/07	Rev: 3/13/08	Of: 23