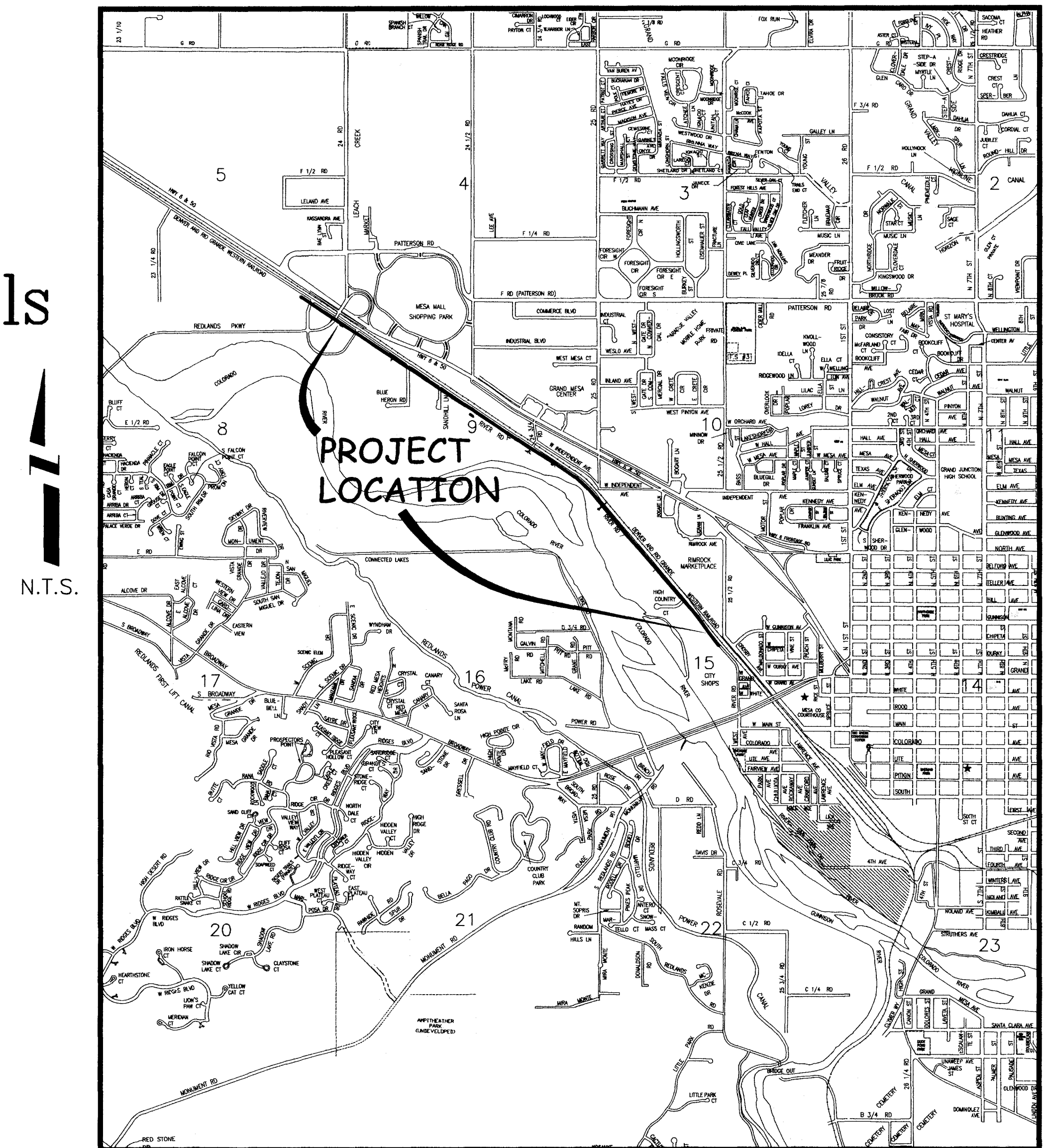


RIVER ROAD INTERCEPTOR REHABILITATION REDLANDS PARKWAY EAST TO CITY SHOPS NOVEMBER 2007

- 1 ————— Cover Sheet
- 2 ————— Standard Abbreviations, Legend, and Symbols
- 3 ————— Summary of Approximate Quantities
- 4 ————— Project Location Plan And Profile
- 5-9 ————— Sanitary Sewer Plan and Profiles

VICINITY MAP



UTILITIES AND AGENCIES								
AGENCY	NAME	POSITION	ROLE	MAILING ADDRESS	STREET ADDRESS	CITY, STATE	VOICE-WK	FAX
GRAND JUNCTION, CITY OF	PAUL JAGIM	PROJECT ENGINEER	PROJECT ENGINEER	250 N. 5th STREET	250 N. 5th STREET	GRAND JCT., CO 81501	970-244-1542	(970) 256-4022
GRAND JUNCTION, CITY OF	BRET GUILLORY	UTILITY ENGINEER	SANITARY SEWER	250 N. 5th STREET	250 N. 5th STREET	GRAND JCT., CO 81501	(970) 244-1590	(970) 256-4022
GRAND VALLEY IRRIGATION CO.	PHIL BERTRAND		IRRIGATION	688 26 ROAD	688 26 ROAD	GRAND JCT., CO 81506	(970) 242-2762	
BRESNAN	SCOTT WRIGHT		CABLE TV	2502 FORESIGHT CIRCLE	2502 FORESIGHT CIRCLE	GRAND JCT., CO 81504	(970) 245-8750	(970) 245-6803
U.S. WEST/QWEST	CHRIS JOHNSON	ENGINEER	TELEPHONE	2524 Blichmann Ave	2524 Blichmann Ave	GRAND JCT., CO 81504	(970) 244-4311	(970) 240-4349
UTE WATER	DARYL MOORE	ENGINEER	WATER	PO BOX 460		GRAND JCT., CO 81502	(970) 242-7491	(970) 242-9189
XCEL	GARY LEWIS	PROJECT MANAGER	GAS, ELECTRIC	2538 Blichmann Ave	2538 Blichmann Ave	GRAND JCT., CO 81504	(970) 244-2698	(970) 244-2661



*Public Works & Utilities
Engineering Division*

NOTE: NOTIFY AFFECTED UTILITY VENDOR 48 HOURS PRIOR TO EXCAVATIONS THAT WILL EXPOSE UTILITY LINES. THE COVER SHEET WILL HAVE A LISTING OF UTILITY VENDORS AND TELEPHONE NUMBERS.

REVISION	DESCRIPTION	DATE
REVISION Δ	CHANGE ORDER NO. 1	2008-01-04
REVISION Δ		
REVISION Δ		
REVISION Δ		

14000801.PDF

DRAWING STATUS:
 PROGRESS
 ISSUED FOR CONSTRUCTION
 ASBUILT

DESIGNED BY:
 [Signature]
 PAUL JAGIM, PROJECT ENGINEER DATE

REVIEWED BY:
 [Signature]
 BRET GUILLORY, UTILITY ENGINEER DATE 01/08/08

AUTHORIZED FOR CONSTRUCTION

BRET GUILLORY, UTILITY ENGINEER DATE

ACCEPTED AS CONSTRUCTED

PAUL JAGIM, PROJECT ENGINEER DATE

ABBREVIATIONS

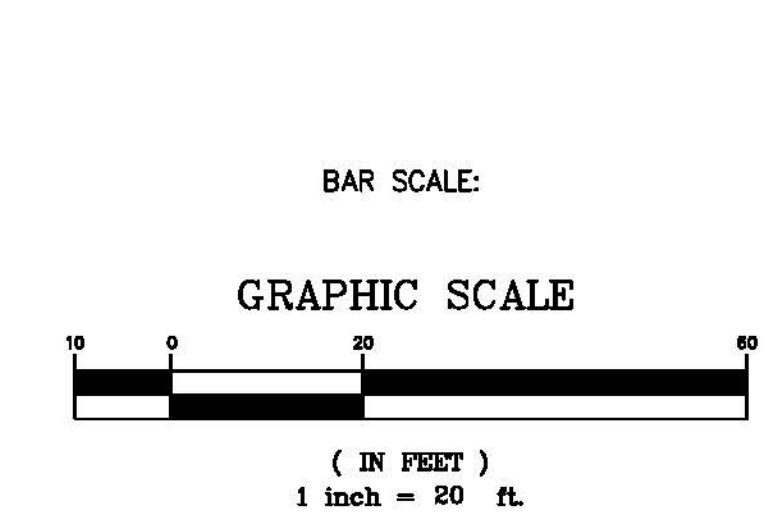
AA-SHTO	AMERICAN ASSOCIATION OF STATE HIGHWAY & TRANSPORTATION OFFICIALS
ABC	AGGREGATE BASE COURSE
AC	ASBESTOS CEMENT
AP	ANGLE POINT
ASB	ANGLED STRAW BALES
ASP	ALUMINIZED STEEL PIPE
ASTM	AMERICAN SOCIETY FOR TESTING MATERIALS
AWWA	AMERICAN WATER WORKS ASSOCIATION
BC	BACK OF CURB
BF	BUTTERFLY VALVE
BOW	BACK OF WALK
BCR	BEGIN CURB RETURN
BOT	BOTTOM
BSWMP	BETTER STORM WATER MANAGEMENT PRACTICES
CH	CHORD
CAP	CORRUGATED ALUMINUM PIPE
CDOT	COLORADO DEPARTMENT OF TRANSPORTATION
CI	CAST IRON
C,G,& SW	CURB, GUTTER & SIDEWALK
CL	CENTER LINE
CL	CLEAR
CMP	CORRUGATED METAL PIPE
CO	CLEAN OUT
COMB	COMBINATION (AS IN STORM SEWER AND SANITARY SEWER)
CONC	CONCRETE
CSM	CITY SURVEY MONUMENT
CSP	CORRUGATED STEEL PIPE
CJ	COPPER
DJ	DUCTILE IRON
DWY	DRIVEWAY
E	ELECTRIC
ECR	END CURB RETURN
EG	EDGE OF GUTTER
EL	ELEVATION
EP	EDGE OF PAVEMENT
EX	EXISTING
FB	FULL BODY
FC	FACE OF CURB
FG	FINISHED GRADE
F	FLOW LINE
FL	FLANGE
FM	FORCE MAIN
FO	FIBER OPTICS
FS	FAR SIDE
FTG	FOOTING
G	GAS
GB	GRADE BREAK
GM	GAS METER
GV	GATE VALVE
HBP	HOT BITUMINOUS PAVEMENT
HDPE	HIGH DENSITY POLYETHYLENE
INV	INVERT
IRR	IRRIGATION
L	LENGTH OF ARC
LC	LONG CHORD
LF	LINEAR FEET
LL	LONG ARC
LS	SHORT ARC
LT	LEFT
MB	MAILBOX
MCSM	MESA COUNTY SURVEY MONUMENT
MH	MANHOLE
MJ	MECHANICAL JOINT
MW	MILL WRAP
N/A	NOT APPLICABLE
NIC	NOT IN CONTRACT
NOP	NO ONE PERSON
NRCP	NON-REINFORCED CONCRETE PIPE
NS	NEAR SIDE
NTS	NOT TO SCALE
OHP	OVERHEAD POWER
OHT	OVERHEAD TELEPHONE
PC	POINT OF CURVATURE
PCC	POINT OF COMPOUND CURVATURE
PE	POLYETHYLENE
PERF	PERFORATED
PI	POINT OF INTERSECTION
PIP	PLASTIC IRRIGATION PIPE
POC	POINT ON CURVE
POT	POINT ON TANGENT
PR	PROPOSED
PRC	POINT OF REVERSE CURVATURE
PT	POINT OF TANGENCY
PVC	POLYVINYL CHLORIDE
R	RADIUS
RCP	REINFORCED CONCRETE PIPE
REQ'D	REQUIRED
RG	RESTRAINED GLANDS
RL	LONG RADIUS
ROW	RIGHT OF WAY
RP	RADIUS POINT
RR	RAIL ROAD
RS	SHORT RADIUS
RT	RIGHT
S	SLOPE
SAN	SANITARY
SC	SHORT CHORD
SCD	STANDARD CONTRACT DOCUMENTS
SCH	SCHEDULE
SF	SILT FENCE
SL	SECTION LINE
SSRB	STANDARD SPECIFICATIONS FOR ROAD & BRIDGE CONSTRUCTION
SSUU	STANDARD SPECIFICATIONS FOR CONSTRUCTION OF UNDERGROUND UTILITIES
STA	STATION
STL	STEEL
STM	STORM
T	TELEPHONE
TAN	LENGTH OF TANGENT
TC	TOP OF CURB
TH	TEST HOLE
TV	TELEVISION
(TYP)	TYPICAL
UU	UNDERGROUND UTILITIES
VC	VERTICAL CURVE
VCP	VITRIFIED CLAY PIPE
VPC	VERTICAL POINT OF CURVATURE
VPCC	VERTICAL POINT OF COMPOUND CURVATURE
VPRC	VERTICAL POINT OF REVERSE CURVATURE
VPI	VERTICAL POINT OF INTERSECTION
VPT	VERTICAL POINT OF TANGENCY
W	WATER
Δ	DELTA ANGLE

LEGEND

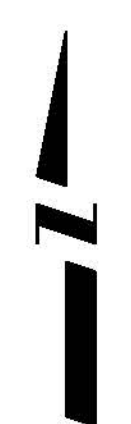
BSWMP	BSWMP
DRAINAGE BASIN BOUNDARY	
BSWMP	BSWMP
ANCHORED STRAW BALES	
BSWMP	BSWMP
SILT FENCE	
BUILDING	
CONCRETE CURB AND GUTTER	
CONCRETE CURB, GUTTER, & SIDEWALK	
CONCRETE DITCH	
CONCRETE SIDEWALK	
CULVERT	
EARTH DITCH	
EDGE OF GRAVEL	
EDGE OF PAVEMENT	
FENCE (BARBED WIRE)	
FENCE (CHAIN LINK)	
FENCE (IRON)	
FENCE (PLASTIC)	
FENCE (WOOD)	
FENCE (WOVEN WIRE)	
GUARD RAIL	
HATCHING: INDICATES ASPHALT REMOVAL	
HATCHING: INDICATES CONCRETE REMOVAL	
HATCHING: INDICATES STAGING AREA	
LINE (CENTER OF IMPROVEMENTS)	
LINE (CITY LIMITS)	
LINE (CONTROL)	
LINE (EASEMENT)	
LINE (MONUMENT/SECTION)	
LINE (PROPERTY)	
LINE (RIGHT OF WAY)	
MATCH LINE	
PIPE (IRRIGATION)	
PIPE (SIPHON)	
PROPOSED CONCRETE CURB AND GUTTER	
PROPOSED CONCRETE CURB, GUTTER, & SIDEWALK	
PROPOSED CONCRETE SIDEWALK	
PROPOSED "WET" UTILITIES (CONSTRUCTION NOTE WILL INDICATE TYPE, SIZE, AND MATERIAL OF NEW MAIN)	
RAIL ROAD	
RETAINING WALL	
STRIPING (CONTINUOUS WHITE)	
STRIPING (DASHED WHITE)	
STRIPING (CONTINUOUS YELLOW)	
STRIPING (DASHED YELLOW)	
TOP OF SLOPE	
CONTOUR LINES (SHOWN BETWEEN TOP & TOE)	
TOE OF SLOPE	
TRAFFIC DETECTOR LOOP	
UTILITY LINE (ABANDON) (THIS CASE A WATER LINE)	
UTILITY LINE (CABLE TV)	
UTILITY LINE (ELECTRIC)	
UTILITY LINE (FIBER OPTIC)	
UTILITY LINE (GAS)	
UTILITY LINE (HIGH VOLTAGE OVERHEAD POWER)	
UTILITY LINE (OVERHEAD POWER)	
UTILITY LINE (OVERHEAD TELEPHONE)	
UTILITY LINE (SANITARY SEWER)	
UTILITY LINE (SANITARY SEWER FORCE MAIN)	
UTILITY LINE (SANITARY SEWER SERVICE)	
UTILITY LINE (STORM SEWER)	
UTILITY LINE (STORM SEWER, PERFORATED)	
UTILITY LINE (STORM/SANITARY SEWER SEWER COMBINATION)	
UTILITY LINE (TELEPHONE)	
UTILITY LINE (WATER)	

SYMBOLS

BENCH MARK	
CATCH BASIN	
CLEAN OUT	
CURB STOP	
FIRE HYDRANT	
GUY WIRE ANCHOR	
HEADGATE	
IRRIGATION PUMP	
MAILBOX	
MANHOLE (ELECTRIC)	
MANHOLE (GAS)	
MANHOLE (SANITARY/STORM)	
MANHOLE (TELEPHONE)	
MANHOLE (TV)	
MANHOLE (WATER)	
METER (GAS)	
METER (WATER)	
PEDESTAL (TELEPHONE)	
PEDESTAL (TV)	
PROPERTY PIN	
PULL BOX	
REDUCER FITTING	
SIGN OR POST (SIGN TYPE NOTED)	
SPRINKLER HEAD	
STREET LIGHT	
SURVEY MONUMENT (CITY)	
SURVEY MONUMENT (TYPE NOTED)	
TEST HOLE	
TRAFFIC PAINT MARKING	
TRAFFIC SIGNAL POLE AND MAST ARM	
UTILITY POLE	
VALVE (GAS)	
VALVE (IRRIGATION)	
VALVE (WATER)	
VEGETATION (HEDGE OR BUSH)	
VEGETATION (TREE STUMP)	
VEGETATION (TREE) (CALIPER SIZE NOTED)	
WATER HYDRANT	
WEIR	
YARD LIGHT	



NORTH ARROW:



N:\Landscape\10117 (River Rd Interceptor Rehab)\dwg\civil\3d 2007 DESIGN.dwg, 2, 11/13/2007 11:50:23 AM

REVISION	DESCRIPTION	DATE	DRAWN BY	JCS	DATE	4-02
REVISION			DESIGNED BY		DATE	
REVISION			CHECKED BY		DATE	
REVISION			APPROVED BY		DATE	

SCALE	
PLAN	1"=20'
PROFILE	
HORIZ.	
VERT.	



PUBLIC WORKS AND UTILITIES ENGINEERING DIVISION

CITY OF GRAND JUNCTION STANDARD ABBREVIATIONS, LEGEND, AND SYMBOLS SHEET

Δ BID SCHEDULE B
 WAS NOT AWARDED

Bid Schedule: River Road Interceptor Rehabilitation Schedule A: FD

Bid Schedule: River Road Interceptor Rehabilitation Schedule B: PD

Item No.	CDOT, City Ref.	Description	Quantity	Units	Unit Price	Total Price
1	SP	54 inch CIPP (Complete in Place) (cleaning, video, testing, cipp, & service connections)	11,499	LF	\$ _____	\$ _____
Δ B	CO # 1	48" CIPP (COMPLETE IN PLACE)	3466	LF	\$ _____	\$ _____
2	SP	8 inch CIPP (Complete in Place) (cleaning, video, testing, cipp, & service connections.)	48	LF	\$ _____	\$ _____
3	SP	Bypass pumping per City Specifications.		Lump Sum	---	\$ _____
4	620	Portable Sanitary Facility.	1	EA	\$ _____	\$ _____
5	626	Mobilization.		Lump Sum	---	\$ _____
6	630	Traffic Control (Complete In Place).		Lump Sum	---	\$ _____
7	630	Traffic Control Plan.		Lump Sum	---	\$ _____
MCR		Minor Contract Revisions	---	---	---	\$ 100,000.00

Bid Amount: \$ _____

Bid Amount: _____ dollars

Item No.	CDOT, City Ref.	Description	Quantity	Units	Unit Price	Total Price
1	SP	54 inch CIPP (Complete in Place) (cleaning, video, testing, cipp, & service connections)	11,499	LF	\$ _____	\$ _____
Δ B	CO # 1	48" CIPP (COMPLETE IN PLACE)	3466	LF	\$ _____	\$ _____
2	SP	8 inch CIPP (Complete in Place) (cleaning, video, testing, cipp, & service connections.)	48	LF	\$ _____	\$ _____
3	SP	Bypass pumping per City Specifications.		Lump Sum	---	\$ _____
4	620	Portable Sanitary Facility.	1	EA	\$ _____	\$ _____
5	626	Mobilization.		Lump Sum	---	\$ _____
6	630	Traffic Control (Complete in Place).		Lump Sum	---	\$ _____
7	630	Traffic Control Plan.		Lump Sum	---	\$ _____
MCR		Minor Contract Revisions	---	---	---	\$ 100,000.00

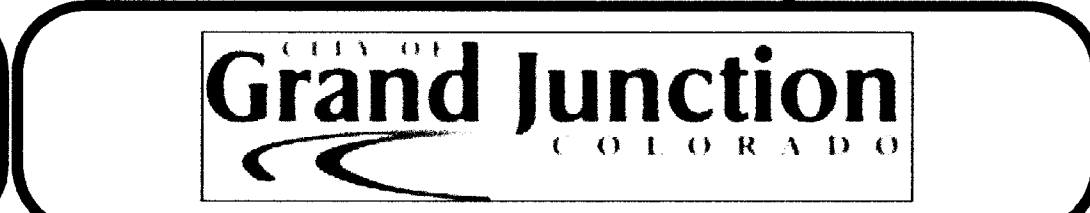
Bid Amount: \$ _____

Bid Amount: _____ dollars

REVISION	DESCRIPTION	DATE
Δ	CHANGE ORDER NO. 1	2008-01-04

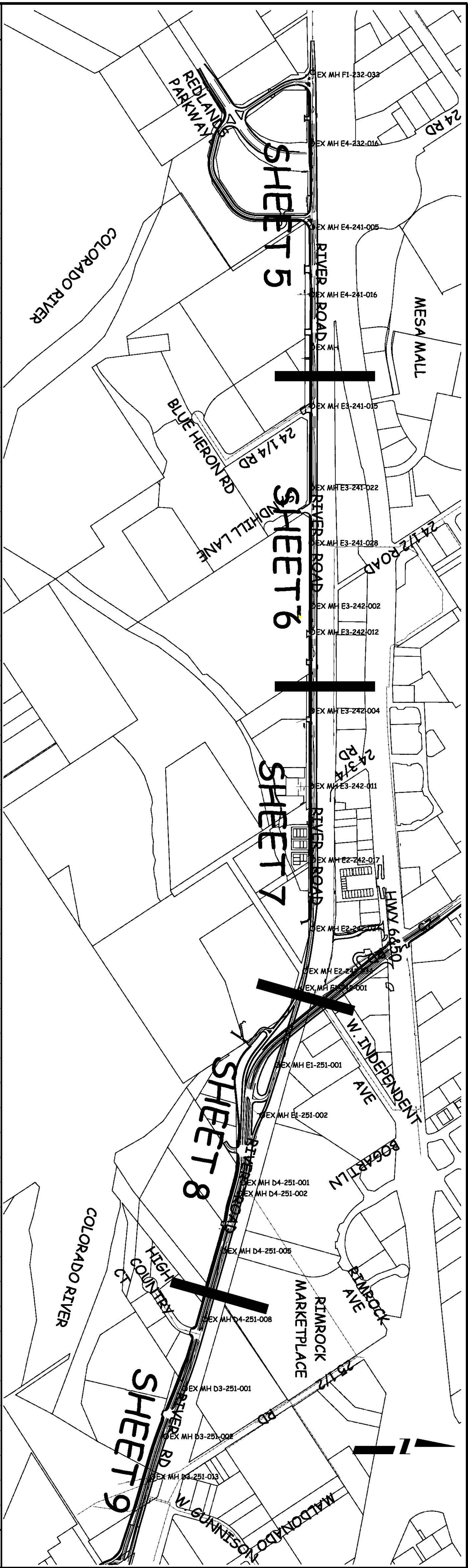
DRAWN BY _____	DATE _____
DESIGNED BY _____	DATE _____
CHECKED BY _____	DATE _____
APPROVED BY _____	DATE _____

SCALE
N.T.S.



**PUBLIC WORKS
AND UTILITIES
ENGINEERING DIVISION**

**RIVER ROAD INTERCEPTOR REHABILITATION
SUMMARY OF APPROXIMATE QUANTITIES**



4940	4860	4780	4700	4620	4540	4460	4380	4300	4220
				EX MH F1-232-033 137+51.82 RM=4542.84 D=13.94					
				EX MH E4-232-016 143+25.00 RM=4544.14 D=14.64					
				EX MH E4-241-005 148+59.18 RM=4545.94 D=15.64					
				EX MH E4-241-016 152+43.11 RM=4545.84 D=14.14					
				EX MH (NOT ON GS) 156+85.46 RM=4546.24 D=14.74					
				EX MH E3-241-015 164+39.85 RM=4547.54 D=14.04					
				EX MH E3-241-022 170+57.11 RM=4547.84 D=13.24					
				EX MH E3-241-028 175+42.18 RM=4548.84 D=13.54					
				EX MH E3-242-002 182+50.37 RM=4549.74 D=13.84					
				EX MH E3-242-012 182+60.82 RM=4549.24 D=13.44					
				EX MH E3-242-004 185+54.88 RM=4549.84 D=13.34					
				EX MH E3-242-011 184+89.34 RM=4553.24 D=18.14					
				EX MH E3-242-017 200+45.04 RM=4553.24 D=15.74					
				EX MH E2-242-004 206+49.42 RM=4550.24 D=15.14					
				EX MH E2-242-034 209+59.44 RM=4548.34 D=10.84					
				EX MH E1-242-001 211+59.82 RM=4548.84 D=9.84					
				EX MH E1-251-001 217+59.83 RM=4548.84 D=7.14					
				EX MH E1-251-002 223+44.44 RM=4549.44 D=7.54					
				EX MH D4-251-001 227+10.79 RM=4551.44 D=9.04					
				EX MH D4-251-005 233+82.40 RM=4551.84 D=9.24					
				EX MH D4-251-008 239+14.72 RM=4552.84 D=9.54					
				EX MH D3-251-001 244+94.82 RM=4552.84 D=12.24					
				EX MH D3-251-002 249+09.21 RM=4552.24 D=12.24					
				EX MH D3-251-013 252+50.80 RM=4552.84 D=12.44					
				EX MH D4-251-008 239+14.72 RM=4552.84 D=9.54					
				EX MH D3-251-001 244+94.82 RM=4552.84 D=12.24					
				EX MH D3-251-002 249+09.21 RM=4552.24 D=12.24					
				EX MH D3-251-013 252+50.80 RM=4552.84 D=12.44					
				EX MH D4-251-008 239+14.72 RM=4552.84 D=9.54					
				EX MH D3-251-001 244+94.82 RM=4552.84 D=12.24					
				EX MH D3-251-002 249+09.21 RM=4552.24 D=12.24					
				EX MH D3-251-013 252+50.80 RM=4552.84 D=12.44					

REVISION A	DATE	DESCRIPTION
REVISION A	DATE	DESCRIPTION
REVISION A	DATE	DESCRIPTION
REVISION A	DATE	DESCRIPTION

DESIGNED BY	DATE	SCALE
CHECKED BY	DATE	SCALE
APPROVED BY	DATE	SCALE

143+00 163+00 183+00 203+00 223+00 243+00

14000B04.PDF

Grand Junction
CITY OF
COLORADO

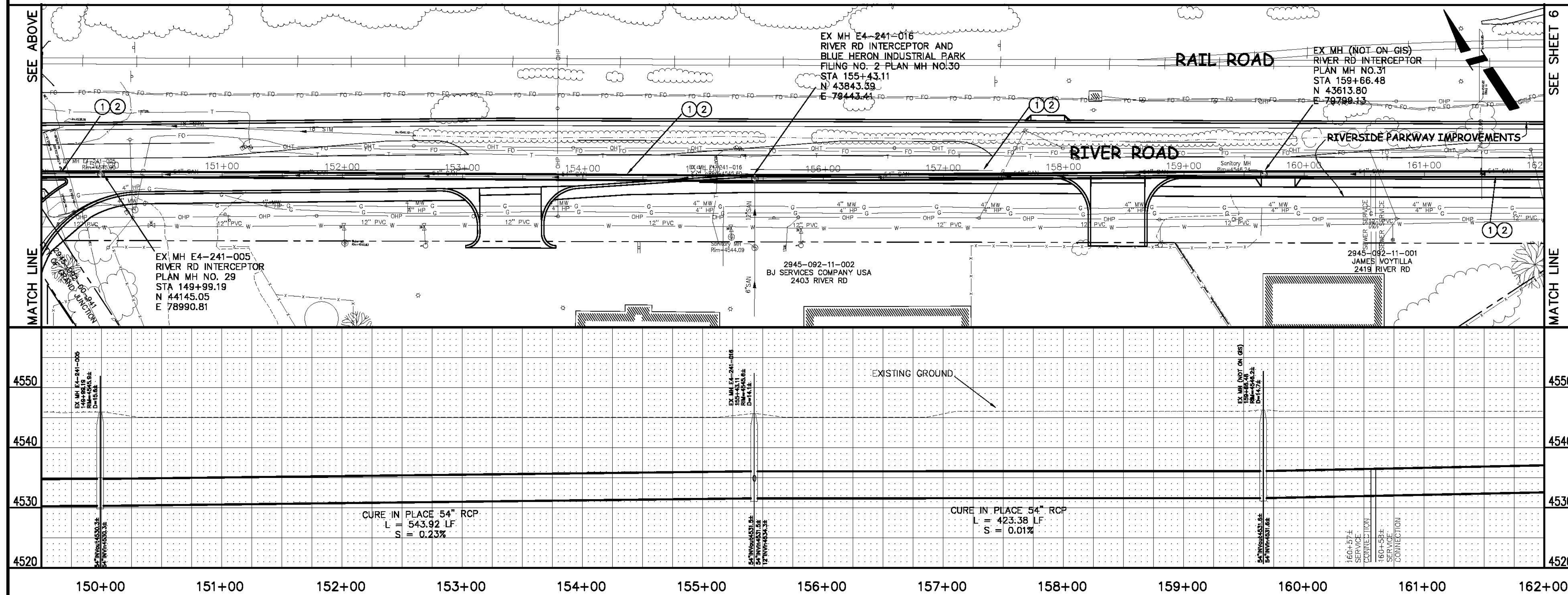
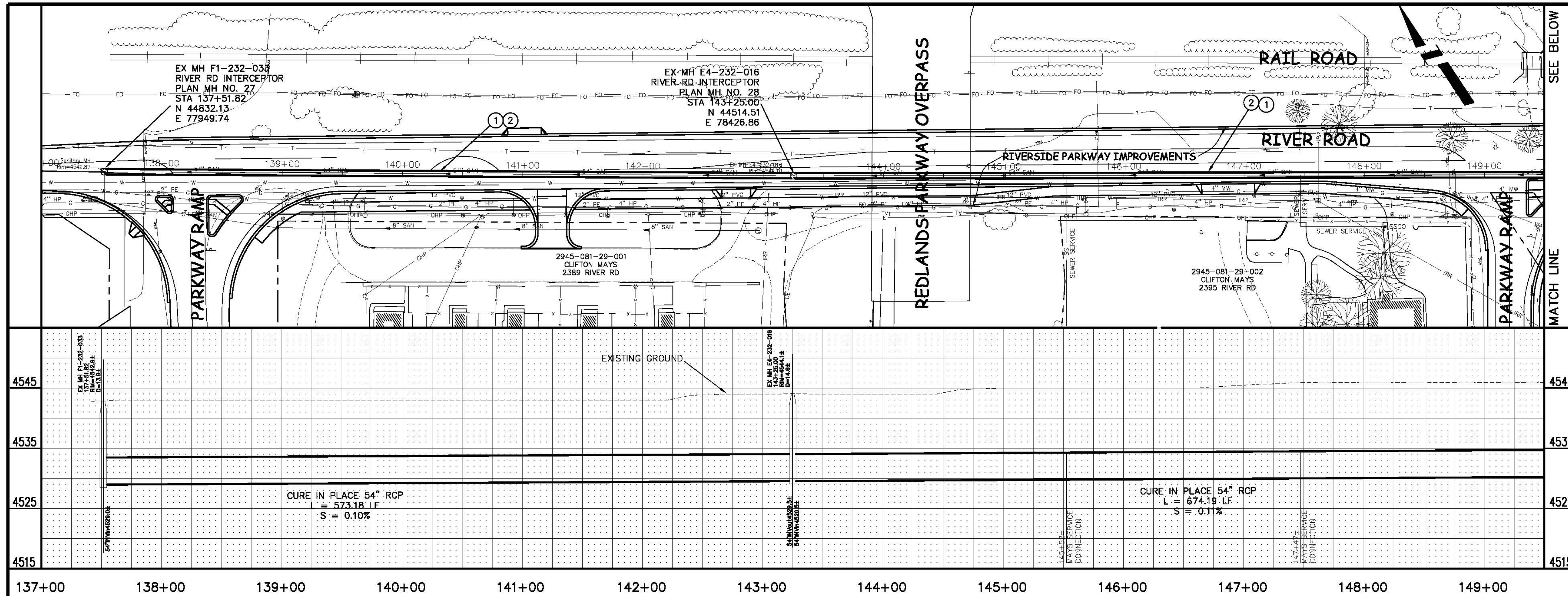
PUBLIC WORKS
AND UTILITIES
ENGINEERING DIVISION

RIVER RD INTERCEPTOR REHAB LOCATION PLAN AND PROFILE
FROM THE REDLANDS PARKWAY OVERPASS EAST TO
THE NORTHEAST CORNER OF THE CITY SHOPS PROPERTY

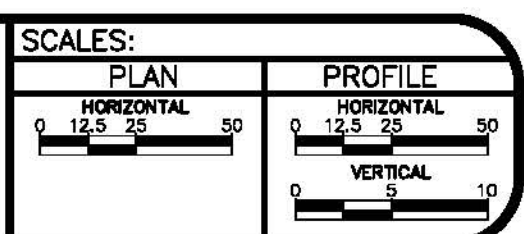
4

CONSTRUCTION NOTES

- ① SP CURED IN PLACE SANITARY SEWER PIPE PER PROJECT SPECIFICATIONS. DURING NEW PIPE INSTALLATION IT WILL BE NECESSARY TO BYPASS PUMP SEWAGE AROUND WORK AREA TO A DOWNSTREAM MANHOLE.
- ② 630 PROVIDE TRAFFIC CONTROL IN WORK AREA AND BYPASS AREA. MAINTAIN ACCESS TO ALL BUSINESSES AND RESIDENCES AND TWO WAY TRAFFIC.



REVISION	DESCRIPTION	DATE	DRAWN BY	DATE
REVISION			JCS	2006
REVISION				
REVISION				
REVISION				



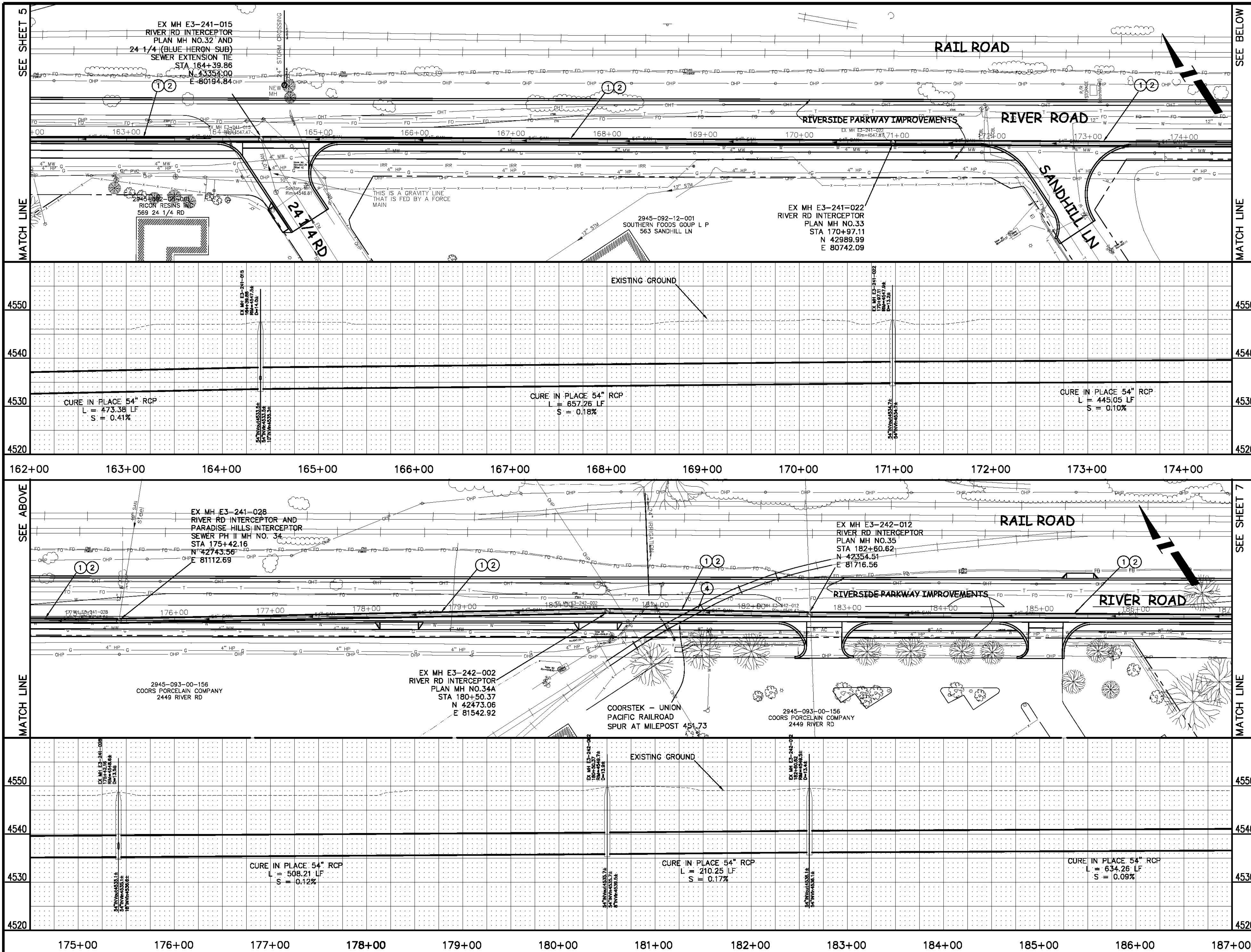
PUBLIC WORKS AND UTILITIES ENGINEERING DIVISION

RIVER ROAD INTERCEPTOR REHABILITATION FROM THE REDLANDS PARKWAY OVERPASS EAST TO 250' WEST OF 24 1/4 ROAD

N:\LmpProj\F10117 (River Rd Interceptor Rehab)\dwg\CIVIL 3D 2007 DESIGN.dwg, 5, 11/13/2007 2:44:36 PM

CONSTRUCTION NOTES

- ① SP CURED IN PLACE SANITARY SEWER PIPE PER PROJECT SPECIFICATIONS. DURING NEW PIPE INSTALLATION IT WILL BE NECESSARY TO BYPASS PUMP SEWAGE AROUND WORK AREA TO A DOWNSTREAM MANHOLE.
- ② 630 PROVIDE TRAFFIC CONTROL IN WORK AREA AND BYPASS AREA. MAINTAIN ACCESS TO ALL BUSINESSES AND RESIDENCES AND TWO WAY TRAFFIC.



4550	4550
4540	4540
4530	4530
4520	4520
162+00	174+00
4550	4550
4540	4540
4530	4530
4520	4520
175+00	187+00

N:\Landscape\904-F10117 (River Rd Interceptor Rehab)\dwg\civil 3d 2007 DESIGN.dwg, 6, 11/13/2007 2:50:55 PM

REVISION	DESCRIPTION	DATE	DRAWN BY	DATE
			JCS	2006

SCALES:
PLAN: 1" = 20'
PROFILE: 1" = 5'

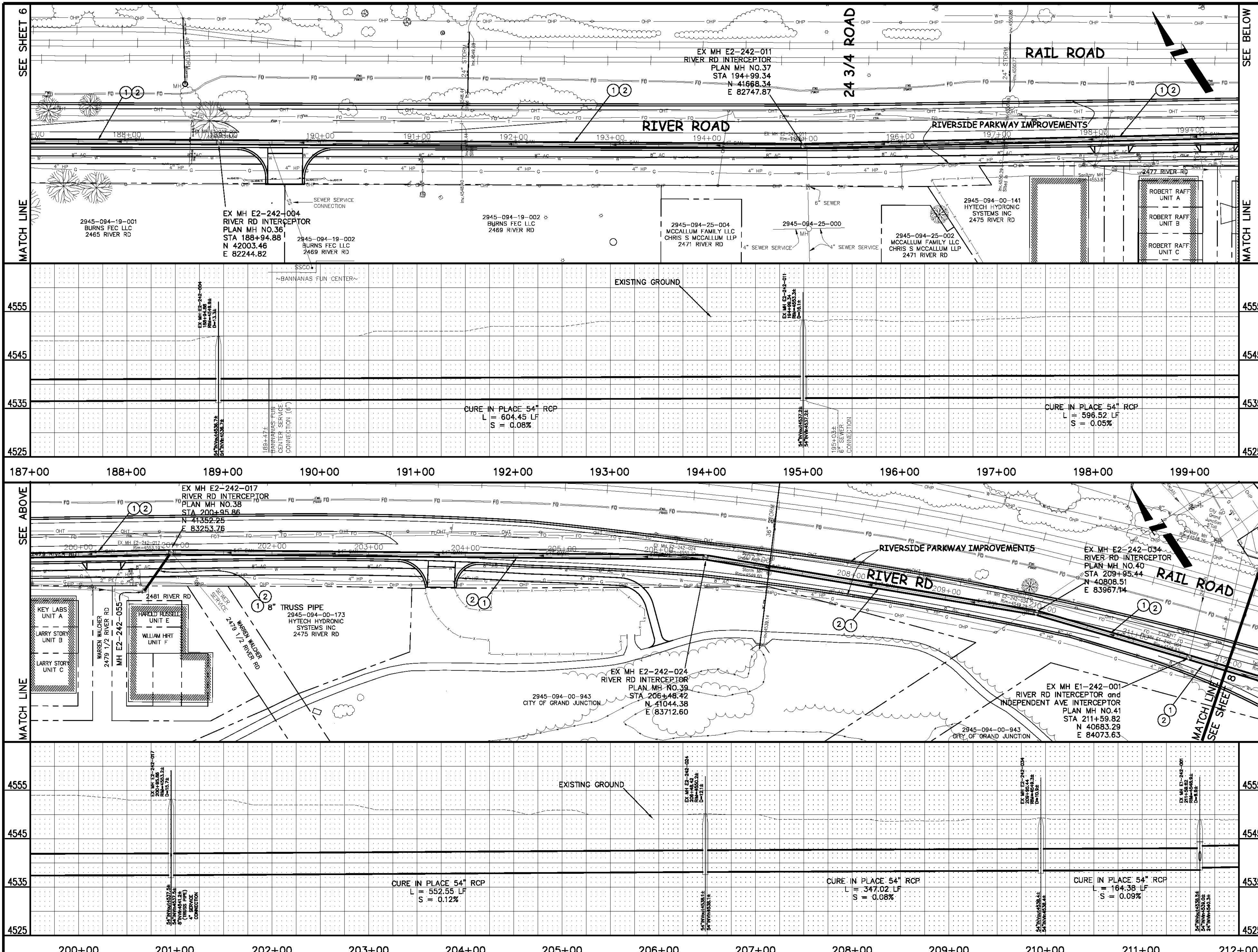


PUBLIC WORKS AND UTILITIES ENGINEERING DIVISION

RIVER ROAD INTERCEPTOR REHABILITATION FROM 250' WEST OF 24 1/4 ROAD TO 700' EAST OF 24 1/2 ROAD

CONSTRUCTION NOTES

- ① SP CURED IN PLACE SANITARY SEWER PIPE PER PROJECT SPECIFICATIONS. DURING NEW PIPE INSTALLATION IT WILL BE NECESSARY TO BYPASS PUMP SEWAGE AROUND WORK AREA TO A DOWNSTREAM MANHOLE.
- ② 630 PROVIDE TRAFFIC CONTROL IN WORK AREA AND BYPASS AREA. MAINTAIN ACCESS TO ALL BUSINESSES AND RESIDENCES AND TWO WAY TRAFFIC.



N:\Landscape\904-F10117 (River Rd Interceptor Rehab).dwg (CIVIL) 3D 2007 DESIGN.dwg: 7, 11/13/2007 2:51:56 PM

REVISION	DESCRIPTION	DATE	DRAWN BY	DATE
			JCS	2006

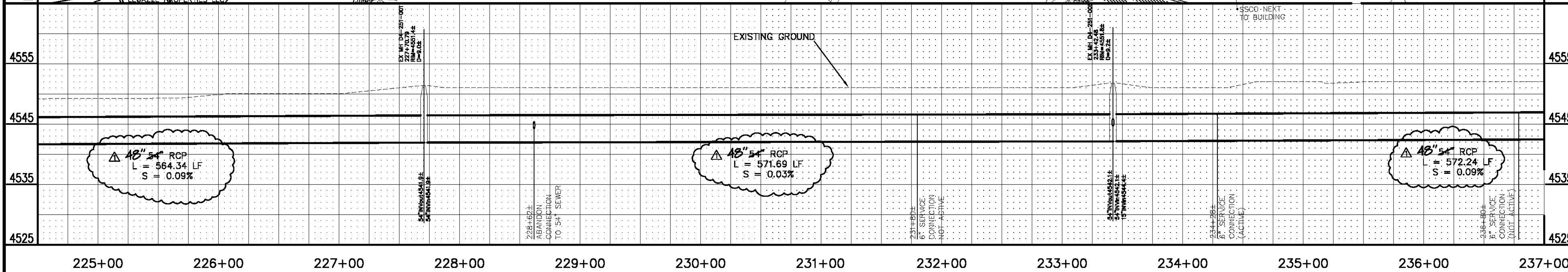
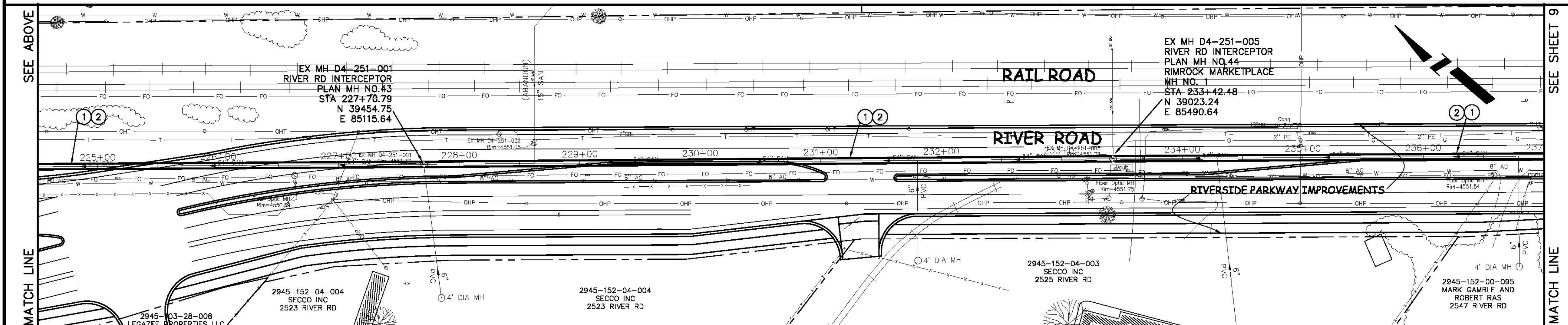
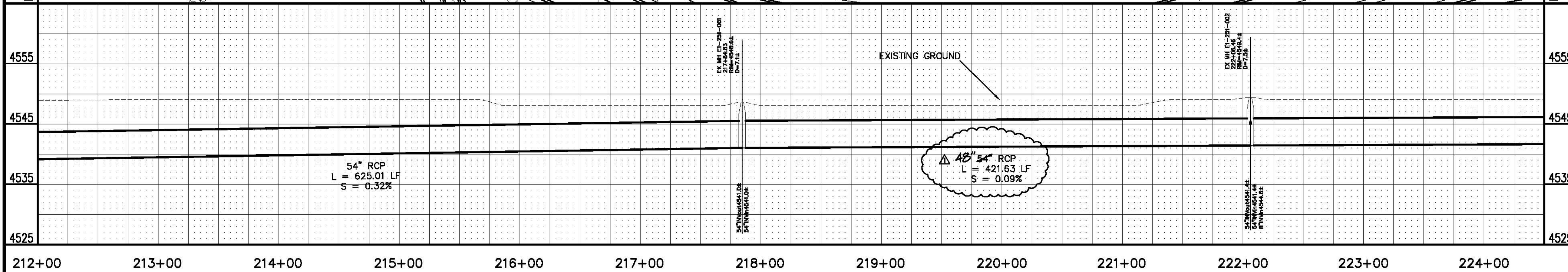
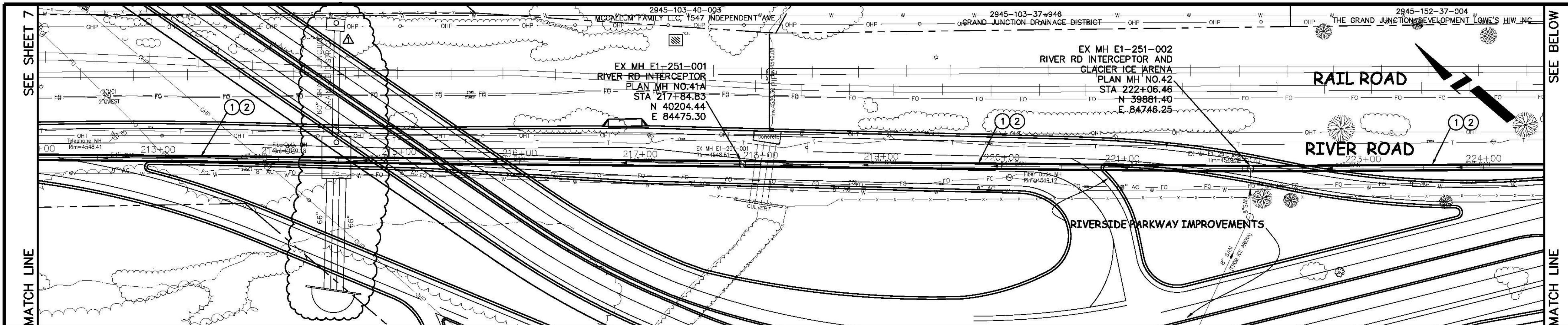
SCALES:	PLAN	PROFILE
	HORIZONTAL	HORIZONTAL
	1" = 25'	1" = 2.5'
	VERTICAL	VERTICAL
	1" = 5'	1" = 5'



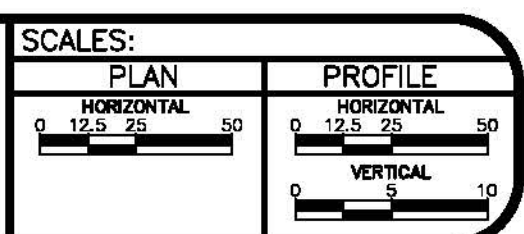
PUBLIC WORKS AND UTILITIES ENGINEERING DIVISION

RIVER ROAD INTERCEPTOR REHABILITATION FROM 700' EAST OF 24 1/2 ROAD TO 25 ROAD

- ① SP CURED IN PLACE SANITARY SEWER PIPE PER PROJECT SPECIFICATIONS. DURING NEW PIPE INSTALLATION IT WILL BE NECESSARY TO BYPASS PUMP SEWAGE AROUND WORK AREA TO A DOWNSTREAM MANHOLE.
- ② 630 PROVIDE TRAFFIC CONTROL IN WORK AREA AND BYPASS AREA. MAINTAIN ACCESS TO ALL BUSINESSES AND RESIDENCES AND TWO WAY TRAFFIC.



REVISION	DESCRIPTION	DATE	DRAWN BY	DATE
1	CHANGE ORDER NO. 1	2008-01-04	JCS	2006
2				
3				
4				



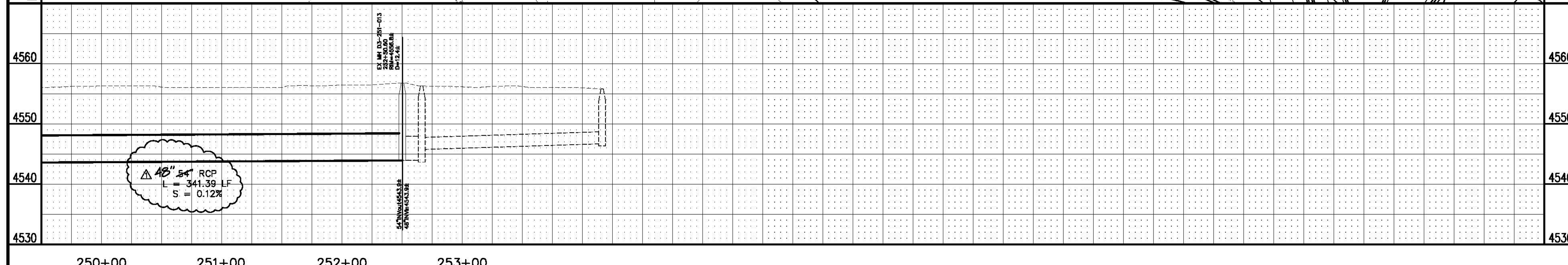
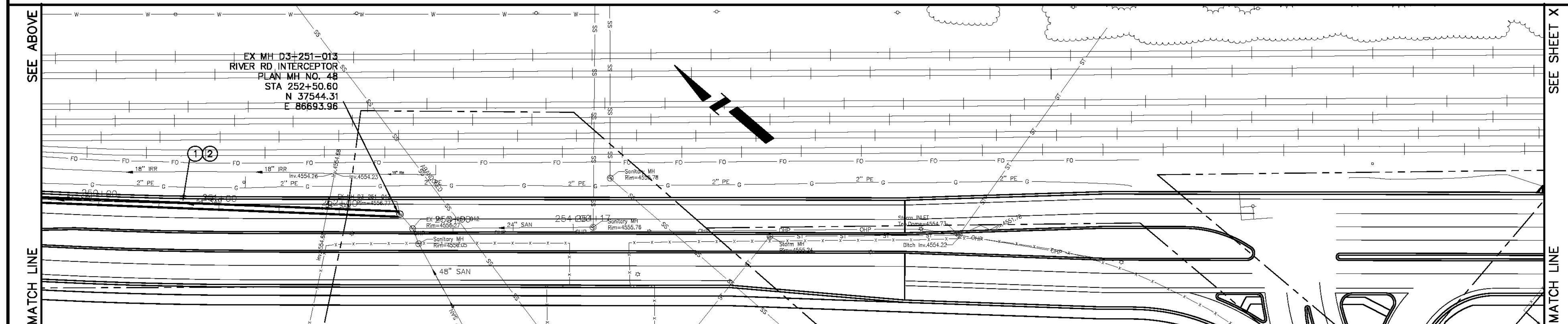
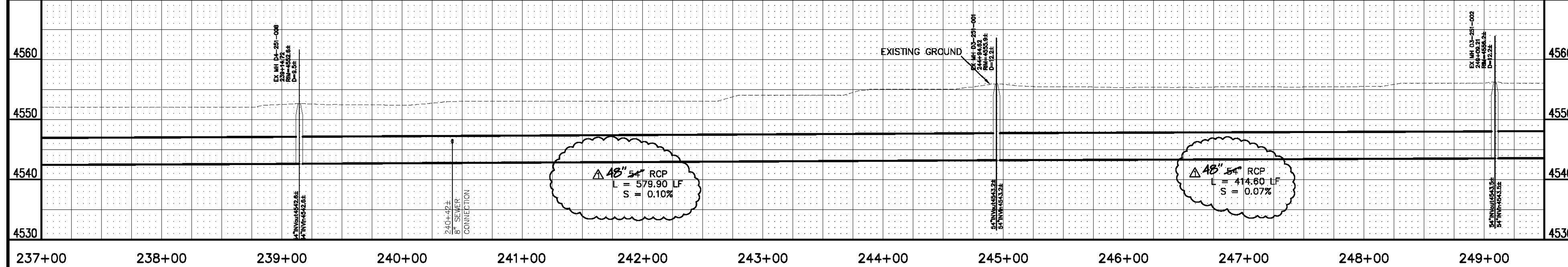
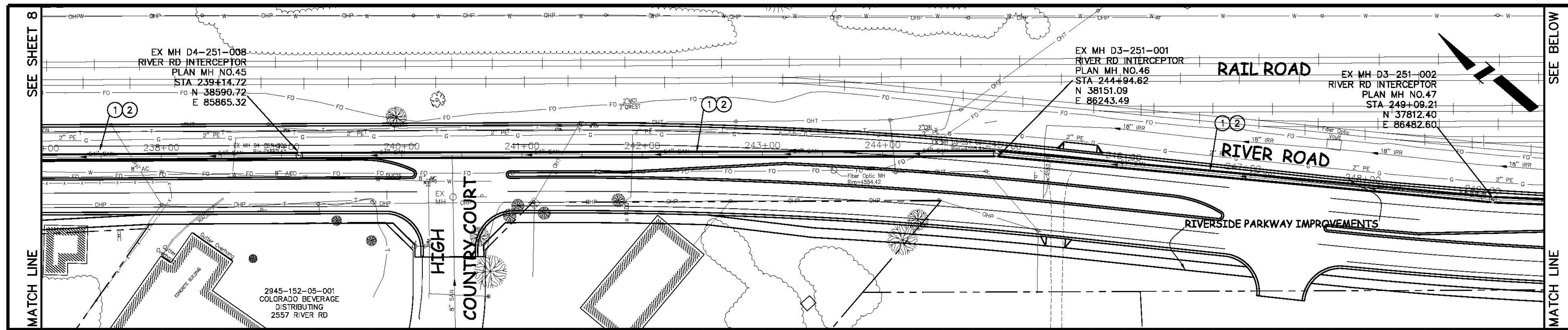
PUBLIC WORKS AND UTILITIES ENGINEERING DIVISION

RIVER ROAD INTERCEPTOR REHABILITATION FROM 25 ROAD EAST TO 350' WEST OF HIGH COUNTRY COURT

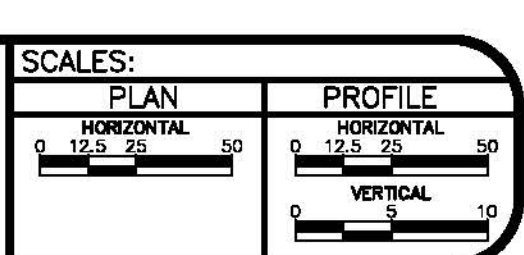
N:\LandProj\F10117 (River Rd Interceptor Rehab)\dwg\CVTL 3D 2007 DESIGN.dwg, 8/12/2008 8:04:56 AM

CONSTRUCTION NOTES

- ① SP CURED IN PLACE SANITARY SEWER PIPE PER PROJECT SPECIFICATIONS. DURING NEW PIPE INSTALLATION IT WILL BE NECESSARY TO BYPASS PUMP SEWAGE AROUND WORK AREA TO A DOWNSTREAM MANHOLE.
- ② 630 PROVIDE TRAFFIC CONTROL IN WORK AREA AND BYPASS AREA. MAINTAIN ACCESS TO ALL BUSINESSES AND RESIDENCES AND TWO WAY TRAFFIC.



REVISION	DESCRIPTION	DATE	DRAWN BY	DATE
1	CHANGE ORDER NO. 1	2008-01-04	JCS	2006
2				
3				
4				



PUBLIC WORKS AND UTILITIES ENGINEERING DIVISION

RIVER ROAD INTERCEPTOR REHABILITATION FROM 350' WEST OF HIGH COUNTRY COURT TO THE NORTHEAST CORNER OF THE CITY SHOPS PROPERTY

N:\LandProj\F10117 (River Rd Interceptor Rehab)\dwg\CIVIL 3D 2007 DESIGN.dwg, 9/12/2008 8:06:10 AM