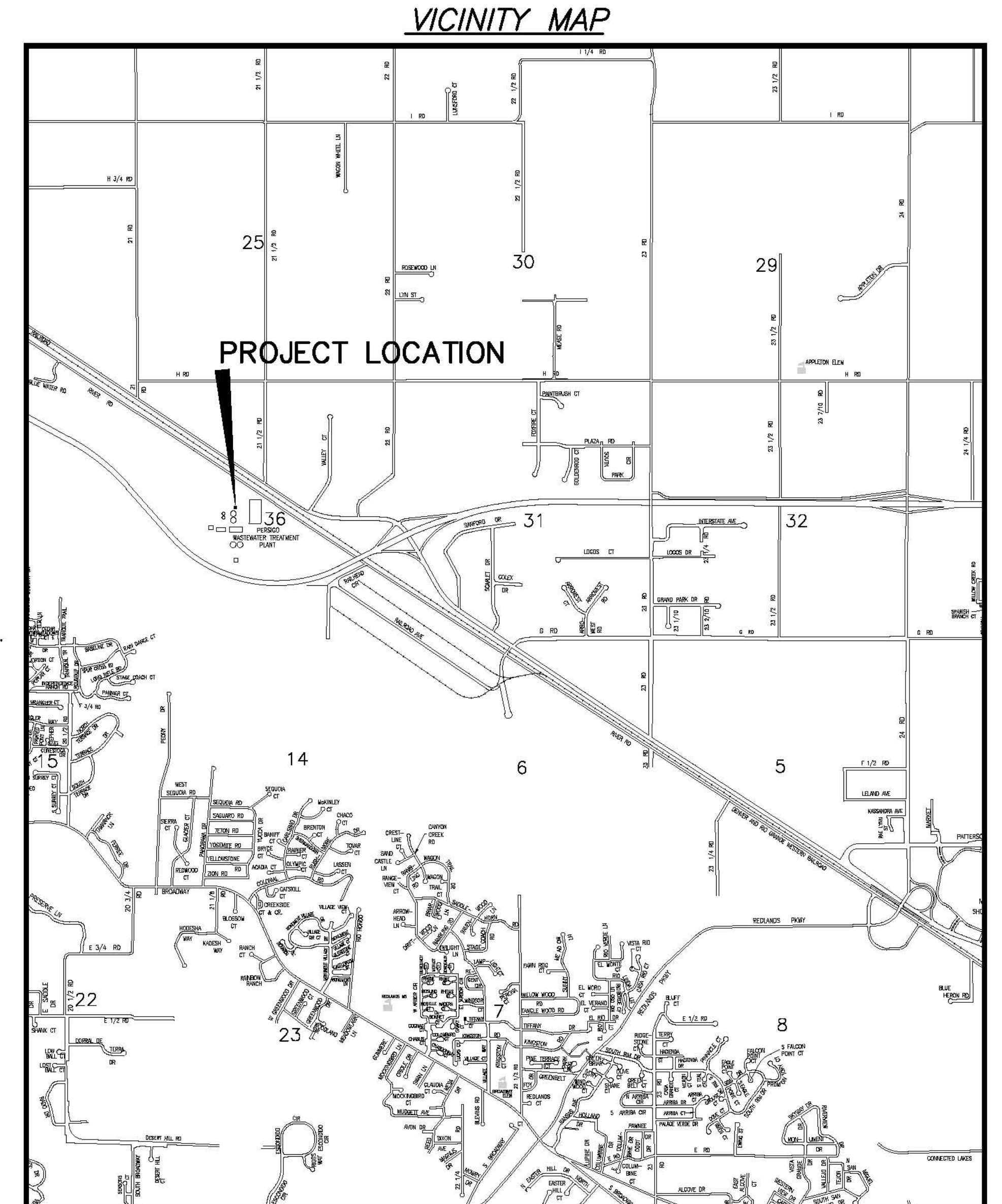


# Persigo - Raw Sewage Influent Chamber and Wet Well Rehabilitation

## January 24, 2007

- 1 \_\_\_\_\_ Cover Sheet
- 2 \_\_\_\_\_ Standard Abbreviations, Legend, and Symbols
- 3 \_\_\_\_\_ Summary of Approximate Quantities
- 4 \_\_\_\_\_ Plan View Sheet
- 5 \_\_\_\_\_ Section View Sheet
- 6 \_\_\_\_\_ Photo Location Map
- 7 \_\_\_\_\_ Project Photos



UTILITIES AND AGENCIES								
AGENCY	NAME	POSITION	ROLE	MAILING ADDRESS	STREET ADDRESS	CITY, STATE	VOICE-WK	FAX
GRAND JUNCTION, CITY OF	Mike Curtis	PROJECT ENGINEER	PROJECT ENGINEER	250 N. 5th STREET	250 N. 5th STREET	GRAND JCT., CO 81501	(970) 256-4004	(970) 256-4022
GRAND JUNCTION, CITY OF	BRET GUILLORY	UTILITY ENGINEER	SANITARY SEWER	250 N. 5th STREET	250 N. 5th STREET	GRAND JCT., CO 81501	(970) 244-1590	(970) 256-4022
GRAND VALLEY IRRIGATION CO.	PHIL BERTRAND		IRRIGATION	688 26 ROAD	688 26 ROAD	GRAND JCT., CO 81506	(970) 242-2762	
BRESNAN	CHUCK WEIDMAN	MANAGER	CABLE TV	2502 FORESIGHT CIRCLE	2502 FORESIGHT CIRCLE	GRAND JCT., CO 81504	(970) 245-8750	(970) 245-6803
U.S. WEST/QWEST	CHRIS JOHNSON	ENGINEER	TELEPHONE	2524 BLICHMANN AVE	2524 BLICHMANN AVE	GRAND JCT., CO 81504	(970) 244-4311	(970) 240-4349
UTE WATER	DARYL MOORE	SUPERVISOR	WATER	PO BOX 460		GRAND JCT., CO 81502	(970) 242-7491	(970) 242-9189
XCEL	DAN STEINKIRCHNER	UNIT MANAGER	GAS, ELECTRIC	2538 BLICHMANN AVE	2538 BLICHMANN AVE	GRAND JCT., CO 81506	(970) 244-2656	(970) 244-2661



*Public Works & Utilities  
Engineering Division*

<b>DRAWING STATUS:</b>	
<input type="radio"/>	PROGRESS
<input type="radio"/>	FINAL CONSTRUCTION DRAWINGS
<input type="radio"/>	ASBUILT
<b>DESIGNED BY:</b>	
MIKE CURTIS, PROJECT ENGINEER	DATE
<b>REVIEWED BY:</b>	
BRET GUILLORY, UTILITY ENGINEER	DATE
<b>AUTHORIZED FOR CONSTRUCTION</b>	
TRENTON C. PRALL, CITY ENGINEER	DATE
<b>ACCEPTED AS CONSTRUCTED</b>	
MIKE CURTIS, PROJECT ENGINEER	DATE

NOTE: NOTIFY AFFECTED UTILITY VENDOR 48 HOURS PRIOR TO EXCAVATIONS THAT WILL EXPOSE UTILITY LINES. THE COVER SHEET WILL HAVE A LISTING OF UTILITY VENDORS AND TELEPHONE NUMBERS.

REVISION	DESCRIPTION	DATE
REVISION $\Delta$	_____	_____
REVISION $\Delta$	_____	_____
REVISION $\Delta$	_____	_____
REVISION $\Delta$	_____	_____

14003001.TIF



**ABBREVIATIONS**

AASHTO	AMERICAN ASSOCIATION OF STATE HIGHWAY & TRANSPORTATION OFFICIALS
ABC	AGGREGATE BASE COURSE
AC	ASBESTOS CEMENT
AP	ANGLE POINT
ASB	ANCHORED STRAW BALES
ASP	ALUMINIZED STEEL PIPE
ASTM	AMERICAN SOCIETY FOR TESTING MATERIALS
AWWA	AMERICAN WATER WORKS ASSOCIATION
BC	BACK OF CURB
BF	BUTTERFLY VALVE
BOW	BACK OF WALK
BCR	BEGIN CURB RETURN
BOT	BOTTOM
BSWMP	BETTER STORM WATER MANAGEMENT PRACTICES
CH	CHORD
CAP	CORRUGATED ALUMINUM PIPE
CDOT	COLORADO DEPARTMENT OF TRANSPORTATION
CI	CAST IRON
C,G,& SW	CURB, GUTTER & SIDEWALK
C	CENTER LINE
CL	CLEAR
CMP	CORRUGATED METAL PIPE
CO	CLEAN OUT
COMB	COMBINATION (AS IN STORM SEWER AND SANITARY SEWER)
CONC	CONCRETE
CSM	CITY SURVEY MONUMENT
CSP	CORRUGATED STEEL PIPE
CU	COPPER
DI	DUCTILE IRON
DWY	DRIVEWAY
E	ELECTRIC
ECR	END CURB RETURN
EG	EDGE OF GUTTER
EL	ELEVATION
EP	EDGE OF PAVEMENT
EX	EXISTING
FB	FULL BODY
FC	FACE OF CURB
FG	FINISHED GRADE
E	FLOW LINE
FL	FLANGE
FM	FORCE MAIN
F0	FIBER OPTICS
FS	FAR SIDE
FTC	FOOTING
G	GAS
GB	GRADE BREAK
GM	GAS METER
GV	GATE VALVE
HBP	HOT BITUMINOUS PAVEMENT
HDPE	HIGH DENSITY POLYETHYLENE
INV	INVERT
IRR	IRRIGATION
L	LENGTH OF ARC
LC	LONG CHORD
LF	LINEAR FEET
LL	LONG ARC
LS	SHORT ARC
LT	LEFT
MB	MAILBOX
MCSM	MESA COUNTY SURVEY MONUMENT
MH	MANHOLE
MJ	MECHANICAL JOINT
MW	MILL WRAP
N/A	NOT APPLICABLE
NIC	NOT IN CONTRACT
NOP	NO ONE PERSON
NRPC	NON-REINFORCED CONCRETE PIPE
NS	NEAR SIDE
NTS	NOT TO SCALE
OHP	OVERHEAD POWER
OHT	OVERHEAD TELEPHONE
PC	POINT OF CURVATURE
PCC	POINT OF COMPOUND CURVATURE
PE	POLYETHYLENE
PERF	PERFORATED
PI	POINT OF INTERSECTION
PIP	PLASTIC IRRIGATION PIPE
PCC	POINT ON CURVE
POT	POINT ON TANGENT
PR	PROPOSED
PRC	POINT OF REVERSE CURVATURE
PT	POINT OF TANGENCY
PVC	POLYVINYL CHLORIDE
R	RADIUS
RCP	REINFORCED CONCRETE PIPE
REQ'D	REQUIRED
RG	RESTRAINED GLANDS
RL	LONG RADIUS
ROW	RIGHT OF WAY
RP	RADIUS POINT
RR	RAIL ROAD
RS	SHORT RADIUS
RT	RIGHT
S	SLOPE
SAN	SANITARY
SC	SHORT CHORD
SCD	STANDARD CONTRACT DOCUMENTS
SCH	SCHEDULE
SF	SILT FENCE
SL	SECTION LINE
SSRB	STANDARD SPECIFICATIONS FOR ROAD & BRIDGE CONSTRUCTION
SSUU	STANDARD SPECIFICATIONS FOR CONSTRUCTION OF UNDERGROUND UTILITIES
STATION	STATION
STL	STEEL
STM	STORM
T	TELEPHONE
TAN	LENGTH OF TANGENT
TC	TOP OF CURB
TH	TEST HOLE
TV	TELEVISION
(TYP)	TYPICAL
UU	UNDERGROUND UTILITIES
VC	VERTICAL CURVE
VCP	VITRIFIED CLAY PIPE
VPC	VERTICAL POINT OF CURVATURE
VPCC	VERTICAL POINT OF COMPOUND CURVATURE
VPRC	VERTICAL POINT OF REVERSE CURVATURE
VPI	VERTICAL POINT OF INTERSECTION
VPT	VERTICAL POINT OF TANGENCY
W	WATER
Δ	DELTA ANGLE

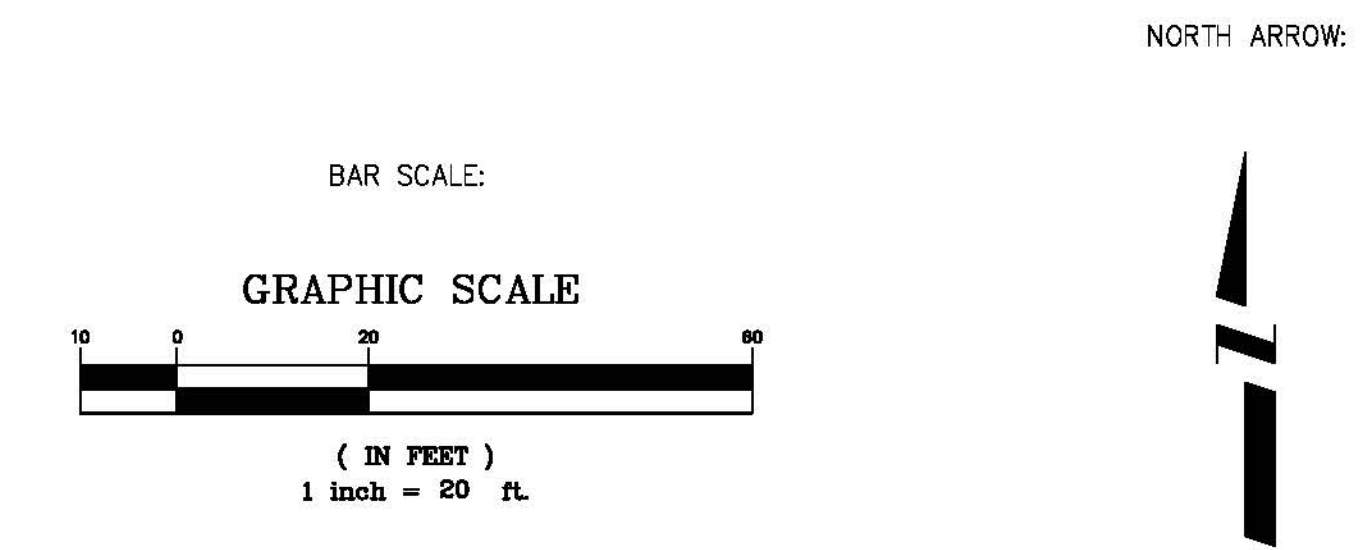
**LEGEND**

BSWMP	-----
DRAINAGE BASIN BOUNDARY	-----
BSWMP	-----
ANCHORED STRAW BALES	-----
BSWMP	-----
SILT FENCE	-----
BUILDING	
CONCRETE CURB AND GUTTER	
CONCRETE CURB, GUTTER, & SIDEWALK	
CONCRETE DITCH	
CONCRETE SIDEWALK	
CULVERT	
EARTH DITCH	-----
EDGE OF GRAVEL	-----
EDGE OF PAVEMENT	-----
FENCE (BARBED WIRE)	-----
FENCE (CHAIN LINK)	-----
FENCE (IRON)	-----
FENCE (PLASTIC)	-----
FENCE (WOOD)	-----
FENCE (WOVEN WIRE)	-----
GUARD RAIL	-----
HATCHING: INDICATES ASPHALT REMOVAL	
HATCHING: INDICATES CONCRETE REMOVAL	
HATCHING: INDICATES STAGING AREA	
LINE (CENTER OF IMPROVEMENTS)	-----
LINE (CITY LIMITS)	-----
LINE (CONTROL)	-----
LINE (EASEMENT)	-----
LINE (MONUMENT/SECTION)	-----
LINE (PROPERTY)	-----
LINE (RIGHT OF WAY)	-----
MATCH LINE	<b>MATCH LINE SEE SHEET NO ?</b>
PIPE (IRRIGATION)	-----
PIPE (SIPHON)	-----

PROPOSED CONCRETE CURB AND GUTTER	
PROPOSED CONCRETE CURB, GUTTER, & SIDEWALK	
PROPOSED CONCRETE SIDEWALK	
PROPOSED "WET" UTILITIES (CONSTRUCTION NOTE WILL INDICATE TYPE, SIZE, AND MATERIAL OF NEW MAIN)	
8" PVC SANITARY SEWER	
ALL PROPOSED FEATURES NOT SHOWN IN LEGEND WILL BE SHOWN THE SAME AS THEIR EXISTING COUNTERPART, BUT INDICATED BY BOLDER LINETYPE	
RAIL ROAD	
RETAINING WALL	
STRIPING (CONTINUOUS WHITE)	
STRIPING (DASHED WHITE)	
STRIPING (CONTINUOUS YELLOW)	
STRIPING (DASHED YELLOW)	
TOP OF SLOPE	
CONTOUR LINES (SHOWN BETWEEN TOP & TOE)	
TOE OF SLOPE	
TRAFFIC DETECTOR LOOP	
UTILITY LINE (ABANDON) (THIS CASE A WATER LINE)	
UTILITY LINE (CABLE TV)	-----
UTILITY LINE (ELECTRIC)	-----
UTILITY LINE (FIBER OPTIC)	-----
UTILITY LINE (GAS)	-----
UTILITY LINE (HIGH VOLTAGE OVERHEAD POWER)	-----
UTILITY LINE (OVERHEAD POWER)	-----
UTILITY LINE (OVERHEAD TELEPHONE)	-----
UTILITY LINE (SANITARY SEWER)	-----
UTILITY LINE (SANITARY SEWER FORCE MAIN)	-----
UTILITY LINE (SANITARY SEWER SERVICE)	-----
UTILITY LINE (STORM SEWER)	-----
UTILITY LINE (STORM SEWER, PERFORATED)	-----
UTILITY LINE (STORM/SANITARY SEWER SEWER COMBINATION)	-----
UTILITY LINE (TELEPHONE)	-----
UTILITY LINE (WATER)	-----

**SYMBOLS**

BENCH MARK	
CATCH BASIN	
CLEAN OUT	
CURB STOP	
FIRE HYDRANT	
GUY WIRE ANCHOR	
HEADGATE	
IRRIGATION PUMP	
MAILBOX	
MANHOLE (ELECTRIC)	
MANHOLE (GAS)	
MANHOLE (SANITARY/STORM)	
MANHOLE (TELEPHONE)	
MANHOLE (TV)	
MANHOLE (WATER)	
METER (GAS)	
METER (WATER)	
PEDESTAL (TELEPHONE)	
PEDESTAL (TV)	
PROPERTY PIN	
PULL BOX	
REDUCER FITTING	
SIGN OR POST (SIGN TYPE NOTED)	
SPRINKLER HEAD	
STREET LIGHT	
SURVEY MONUMENT (CITY)	
SURVEY MONUMENT (TYPE NOTED)	
TEST HOLE	
TRAFFIC PAINT MARKING	
TRAFFIC SIGNAL POLE AND MAST ARM	
UTILITY POLE	
VALVE (GAS)	
VALVE (IRRIGATION)	
VALVE (WATER)	
VEGETATION (HEDGE OR BUSH)	
VEGETATION (TREE STUMP)	
VEGETATION (TREE) (CALIPER SIZE NOTED)	
WATER HYDRANT	
WEIR	
YARD LIGHT	



REVISION	DESCRIPTION	DATE	DRAWN BY	JCS	DATE	4-02
REVISION			DESIGNED BY		DATE	
REVISION			CHECKED BY		DATE	
REVISION			APPROVED BY		DATE	

SCALE	
PLAN	PROFILE
HORIZ. 1"=20'	HORIZ.
VERT.	



**PUBLIC WORKS AND UTILITIES ENGINEERING DIVISION**

**CITY OF GRAND JUNCTION STANDARD ABBREVIATIONS, LEGEND, AND SYMBOLS SHEET**

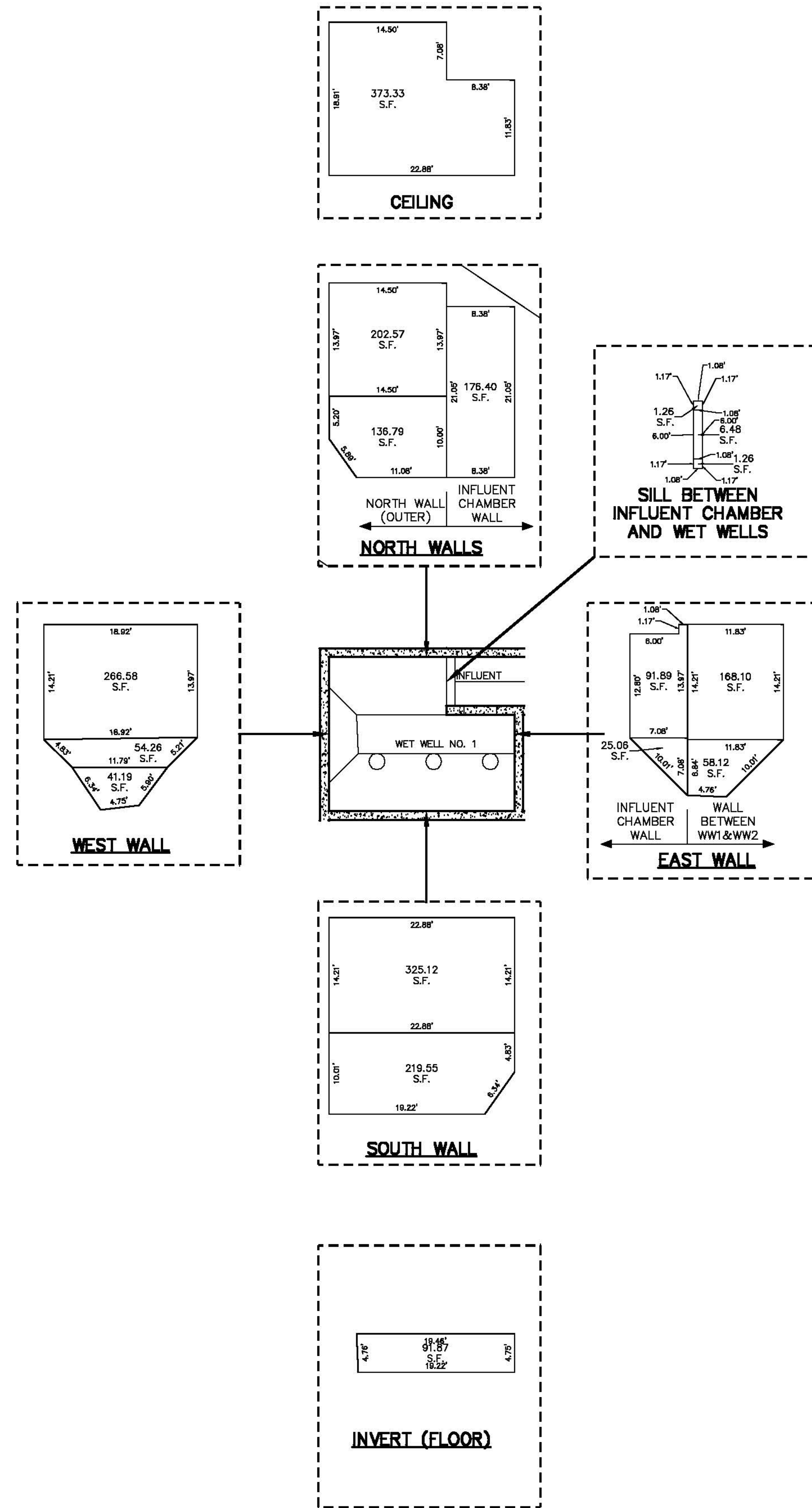
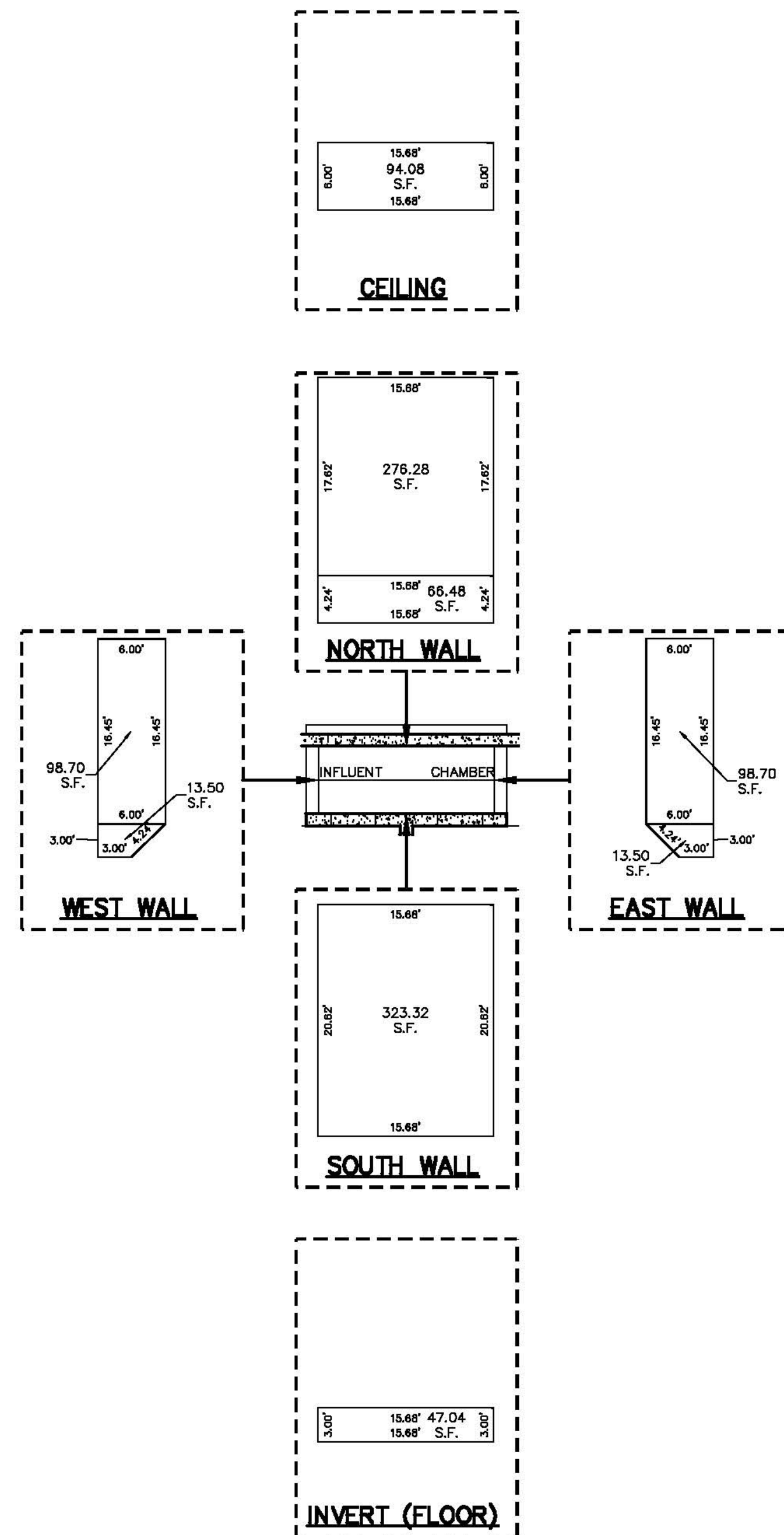
**WALL SCHEDULE FOR CURED IN PLACE  
SANITARY SEWER BASIN LINERS**

INFLUENT CHAMBER NO RTH WALL	
TOP PORTION	230.20 SF
SECTION PORTION	80.80 SF
NORTH WALL	242.16 SF
SOUTH WALL	
SECTION PORTION	242.16 SF
WEST WALL	
TOP PORTION	90.70 SF
SECTION PORTION	10.50 SF
WEST WALL	112.20 SF
EAST WALL	
TOP PORTION	90.70 SF
SECTION PORTION	10.50 SF
EAST WALL	112.20 SF
INVERT (FLOOR)	
INVERT (FLOOR)	40.00 SF
CEILING	
CEILING	90.00 SF
<b>TOTAL WALL AREA INFLUENT CHAMBER:</b>	<b>1031.60 SF</b>

WET WELL NO. 1 NO RTH WALLS	
OUTER WALL	202.57 SF
TOP PORTION	130.70 SF
SECTION PORTION	130.70 SF
INFLUENT CHAMBER WALL	130.40 SF
INFLUENT CHAMBER WALL	130.40 SF
NORTH WALLS	
TOP PORTION	325.12 SF
SECTION PORTION	230.00 SF
SOUTH WALL	
TOP PORTION	325.12 SF
SECTION PORTION	230.00 SF
WEST WALL	
TOP PORTION	200.58 SF
SECTION PORTION	14.20 SF
SECTION PORTION	11.70 SF
WEST WALL	342.00 SF
EAST WALLS	
INFLUENT CHAMBER WALL	91.80 SF
TOP PORTION	91.80 SF
SECTION PORTION	25.06 SF
WALL BETWEEN WW1 & WW2	25.06 SF
TOP PORTION	100.10 SF
SECTION PORTION	25.12 SF
EAST WALLS	342.17 SF
INVERT (FLOOR)	
INVERT (FLOOR)	90.00 SF
CEILING	
CEILING	310.30 SF
SILL BETWEEN INFLUENT CHAMBER & WW	
TOP PORTION	1.00 SF
SECTION PORTION	0.00 SF
SECTION PORTION	1.00 SF
SILL BETWEEN INFLUENT CHAMBER & WW:	0.00 SF
<b>TOTAL WALL AREA WET WELL NO 1:</b>	<b>2239.83 SF</b>

<b>TOTAL WALL AREA FOR WET WELL NO 1 AND WET WELL NO 2 COMBINED:</b>	<b>* 4479.66 SF</b>
TOTAL WALL AREA FOR WET WELL NO 1, WET WELL NO 2, AND INFLUENT CHAMBER:	
	<b>5511.26 SF</b>

\* FOR QUANTITY APPROXIMATION PURPOSES THE TOTAL WALL AREA FOR WET WELL NO 1 WILL BE DOUBLED TO ACCOUNT FOR WET WELL NO 2

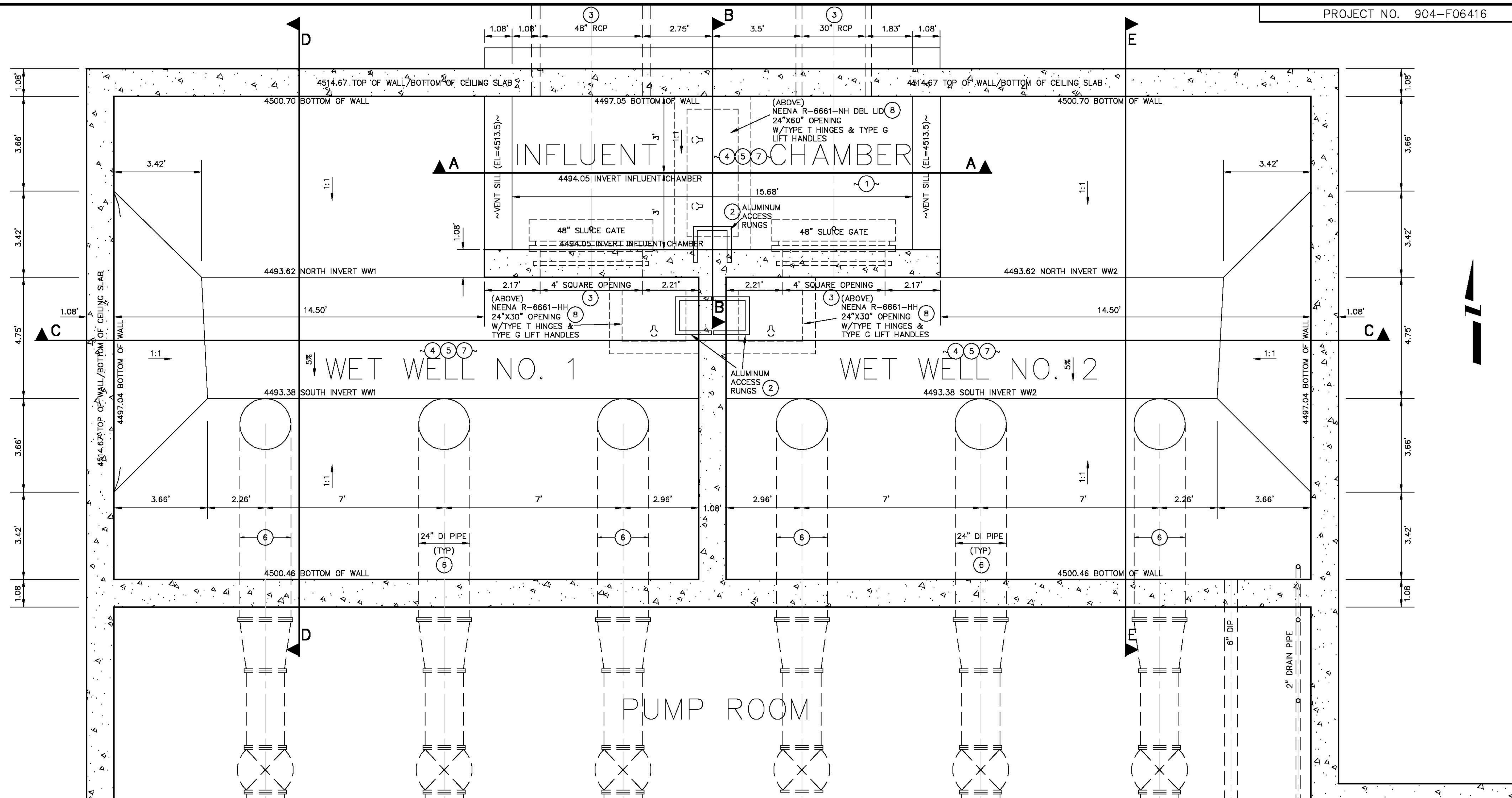


REVISION	DESCRIPTION	DATE	DRAWN BY	DATE	SCALE:
REVISION			DESIGNED BY	DATE	PLAN 0 2.5 5 10
REVISION			CHECKED BY	DATE	
REVISION			APPROVED BY	DATE	



**PUBLIC WORKS  
AND UTILITIES  
ENGINEERING DIVISION**





**CONSTRUCTION NOTES**

- ① CONTRACTOR MAY CORE HOLES INTO DECK PORTION OF LID SLAB FOR AIR INFILTRATION AND VENTILATION DURING CONSTRUCTION BUT MUST RESTORE DECK TO PRECONSTRUCTION CONDITION. THE COST OF ALL CORING AND RESTORATION OF DECK SHALL BE INCIDENTAL TO THE COST OF BASIN LINER.
- ② 202.00 REMOVE ALUMINUM ACCESS RUNGS. ACCESS RUNGS SHALL BE CUT OFF FLUSH WITH FACE OF WALL AND REMOVED.
- ③ CONTRACTOR SHALL COORDINATE DIVERSION OF SEWAGE FLOWS TO AFFECTED BASIN WITH PERSIGO WASTE WATER TREATMENT PLANT CREWS.
- ④ SP SANITARY SEWER BASIN REHABILITATION PER PROJECT SPECIFICATIONS. CONTRACTOR SHALL SATISFACTORILY CLEAN CORROSION CAUSED BY HYDROGEN SULFIDE FROM BASIN WALLS. NO MATERIALS FROM CLEAN UP OPERATIONS SHALL BE ALLOWED TO ENTER TREATMENT PLANT FLOWS. ANY DAMAGE CAUSED TO TREATMENT FACILITY BY MATERIAL ENTERING TREATMENT FLOWS WILL BE REPAIRED AT THE CONTRACTOR'S EXPENSE. ALL BASIN OPENINGS, PENETRATIONS, AND GATES SHALL BE RESTORED TO AN OPERABLE CONDITION PRIOR TO ACCEPTANCE OF WORK.

**CONSTRUCTION NOTES (CONTINUED)**

- ⑤ CONTRACTOR SHALL COORDINATE THE REMOVAL OF CLEAN UP MATERIAL TO AFFECTED BASIN WITH PERSIGO WASTE WATER TREATMENT PLANT CREWS AFTER CLEAN UP OPERATIONS.
- ⑥ CONTRACTOR SHALL COORDINATE THE EVALUATION, REPLACEMENT, AND/OR REHABILITATION OF THE 24" DUCTILE IRON DISCHARGE PIPES BETWEEN THE WET WELLS AND THE PLUG VALVES INSIDE THE PUMP ROOM WITH PERSIGO WASTE WATER TREATMENT PLANT CREWS
- ⑦ CONTRACTOR SHALL COORDINATE BRINGING AFFECTED BASIN BACK INTO OPERATION WITH PERSIGO WASTE WATER TREATMENT PLANT CREWS AFTER ALL WORK ON AFFECTED BASIN HAS BEEN ACCEPTED BY THE CITY.
- ⑧ CONTRACTOR SHALL COORDINATE THE REPLACEMENT OF THE ACCESS FRAMES AND LIDS WITH PERSIGO WASTE WATER TREATMENT PLANT CREWS.

**NOTE**

CONTRACTOR SHALL VERIFY ALL DIMENSIONS AND CONDITIONS SHOWN ON PLANS PRIOR TO CONSTRUCTION. PLANS WERE DRAFTED FROM AS BUILT RECORDS AS SUPPLIED BY THE CONTRACTOR OF THE WASTE WATER TREATMENT PLANT AND HAVE NOT BEEN VERIFIED OR SURVEYED BY THE CITY OF GRAND JUNCTION.

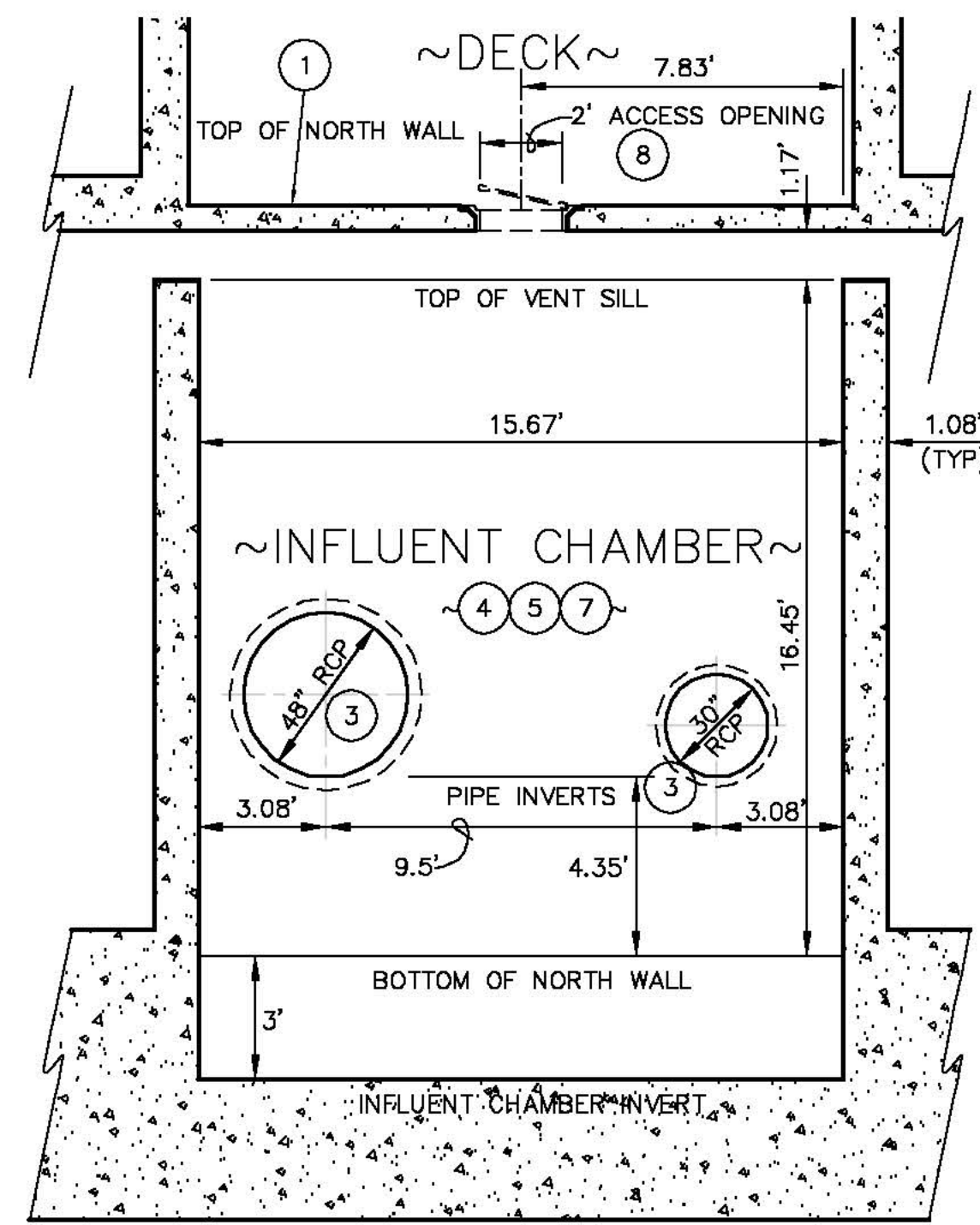
REVISION	DESCRIPTION	DATE	DRAWN BY	DATE	SCALE:
REVISION A			DESIGNED BY	DATE	
REVISION B			CHECKED BY	DATE	
REVISION C			APPROVED BY	DATE	
REVISION D					



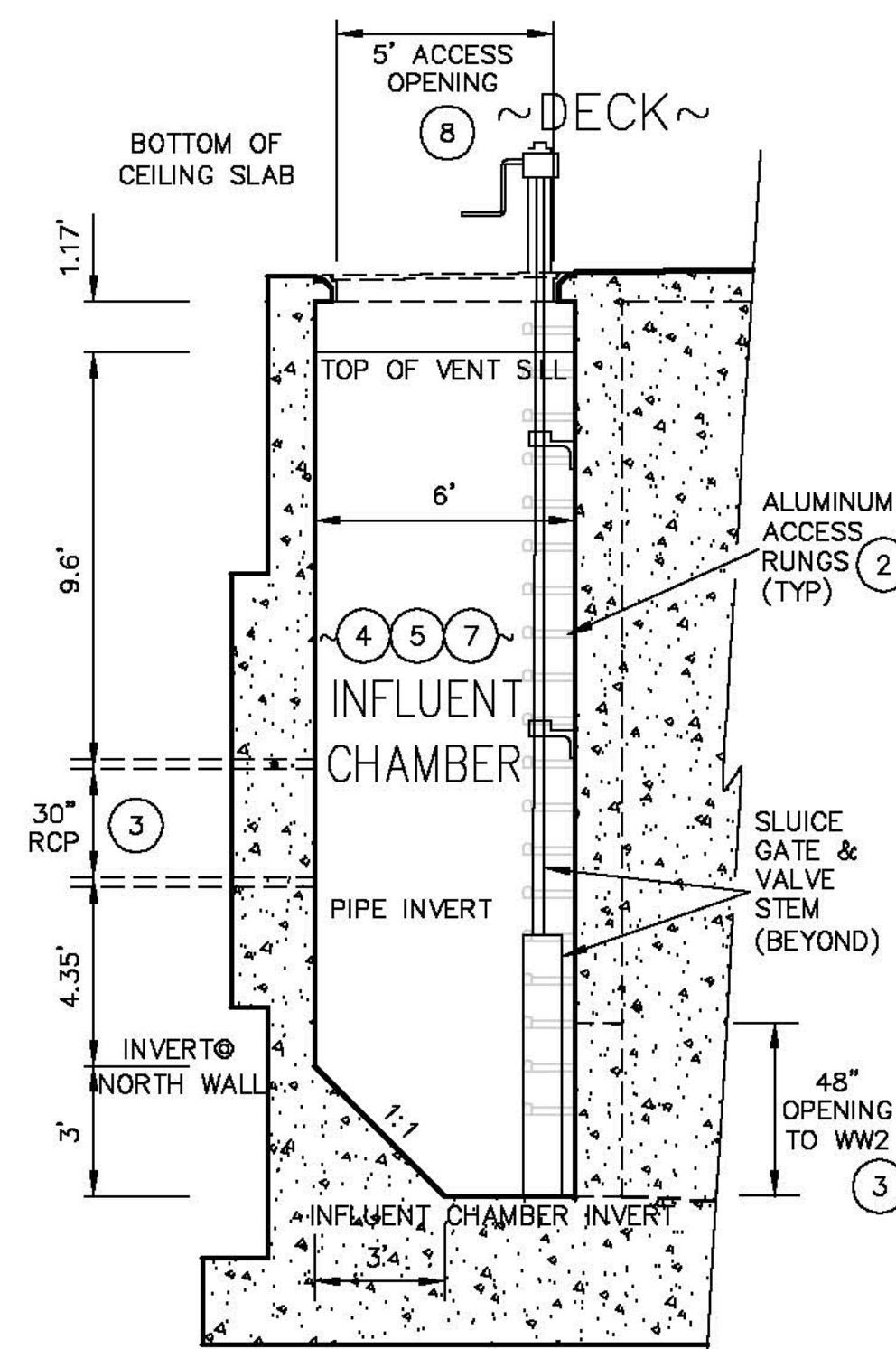
**PUBLIC WORKS  
AND UTILITIES  
ENGINEERING DIVISION**

**Persigo - Raw Sewage Influent  
Chamber and Wet Well Rehabilitation**  
Plan View Sheet

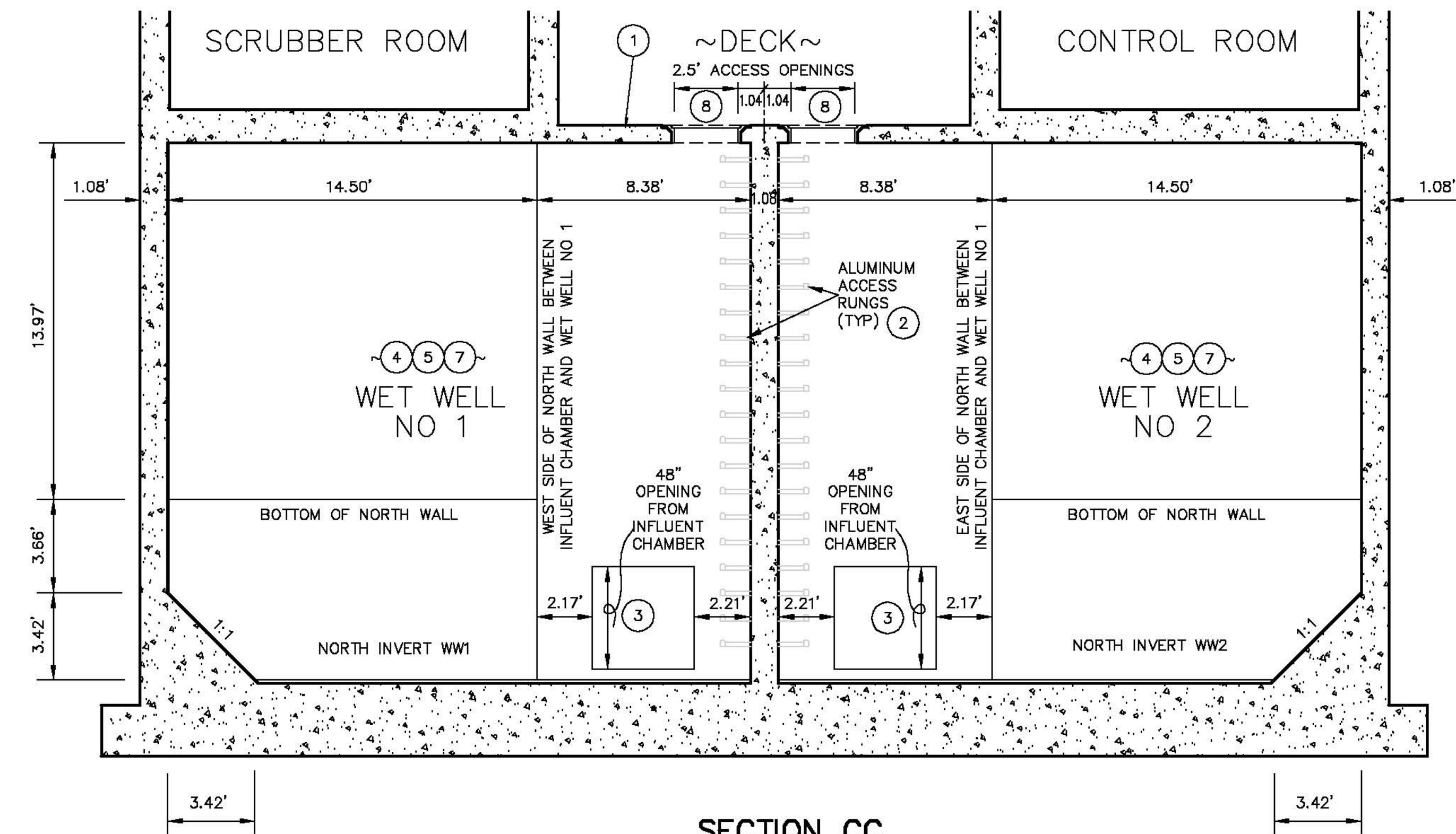




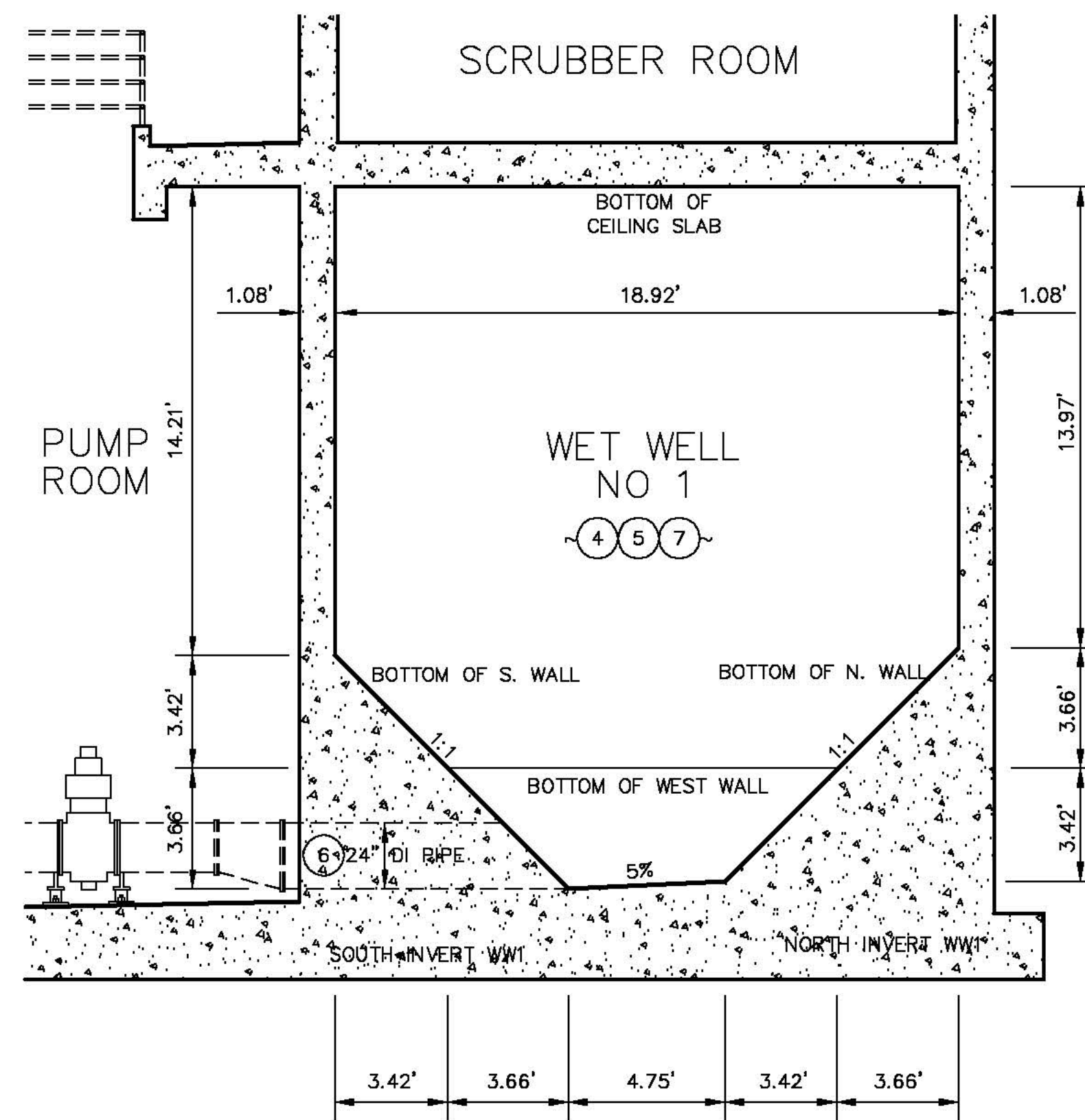
**SECTION AA**  
(LOOKING NORTH)



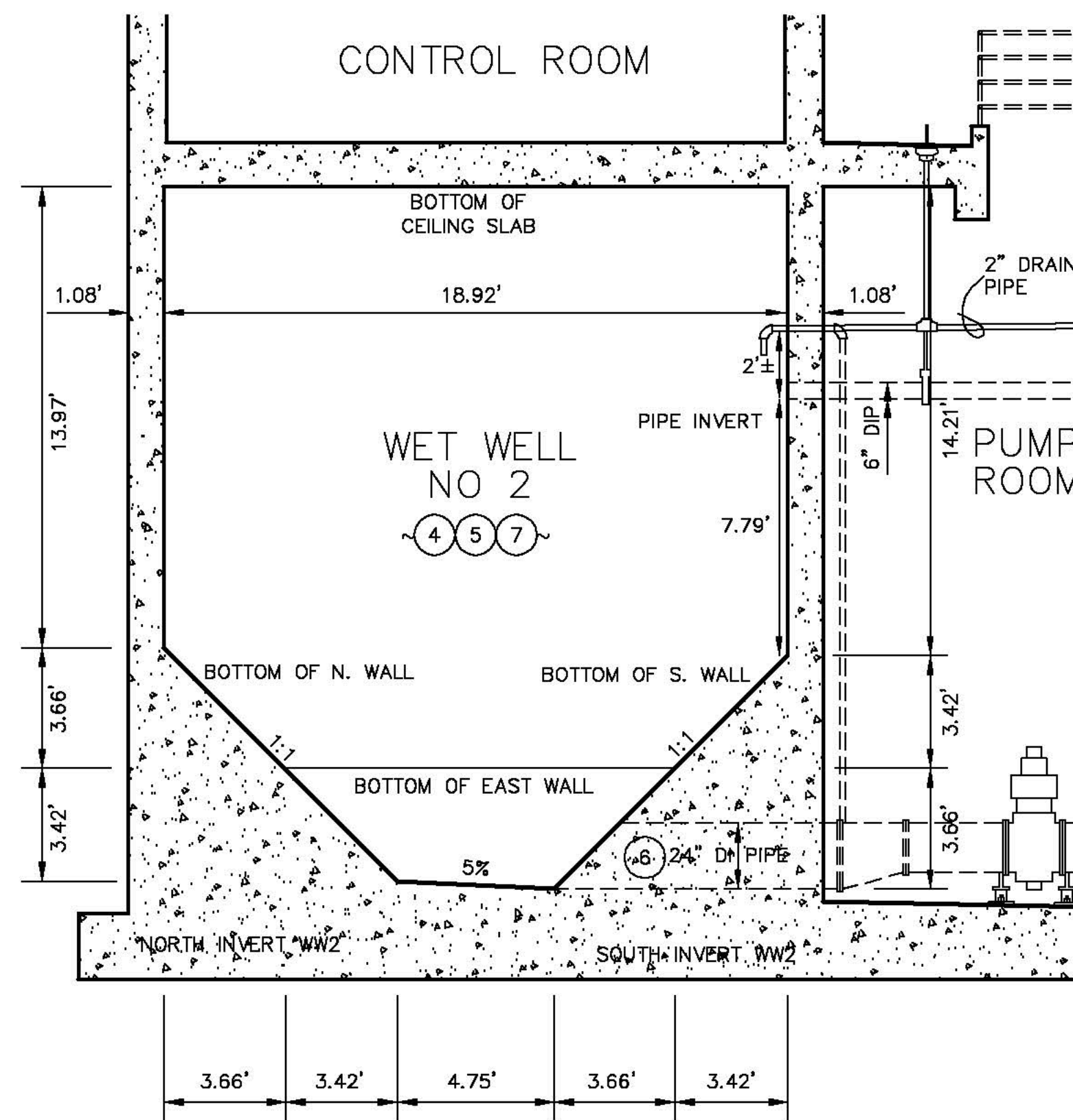
**SECTION BB**  
(LOOKING EAST)



**SECTION CC**  
(LOOKING NORTH)



**SECTION DD**  
(LOOKING WEST)



**SECTION EE**  
(LOOKING EAST)

**CONSTRUCTION NOTES**

- 1 CONTRACTOR MAY CORE HOLES INTO DECK PORTION OF LID SLAB FOR AIR INFILTRATION AND VENTILATION DURING CONSTRUCTION BUT MUST RESTORE DECK TO PRECONSTRUCTION CONDITION. THE COST OF ALL CORING AND RESTORATION OF DECK SHALL BE INCIDENTAL TO THE COST OF BASIN LINER.
- 2 202.00 REMOVE ALUMINUM ACCESS RUNGS. ACCESS RUNGS SHALL BE CUT OFF FLUSH WITH FACE OF WALL AND REMOVED.
- 3 CONTRACTOR SHALL COORDINATE DIVERSION OF SEWAGE FLOWS TO AFFECTED BASIN WITH PERSIGO WASTE WATER TREATMENT PLANT CREWS.
- 4 SP SANITARY SEWER BASIN REHABILITATION PER PROJECT SPECIFICATIONS. CONTRACTOR SHALL SATISFACTORILY CLEAN CORROSION CAUSED BY HYDROGEN SULFIDE FROM BASIN WALLS. NO MATERIALS FROM CLEAN UP OPERATIONS SHALL BE ALLOWED TO ENTER TREATMENT PLANT FLOWS. ANY DAMAGE CAUSED TO TREATMENT FACILITY BY MATERIAL ENTERING TREATMENT FLOWS WILL BE REPAIRED AT THE CONTRACTOR'S EXPENSE. ALL BASIN OPENINGS, PENETRATIONS, AND GATES SHALL BE RESTORED TO AN OPERABLE CONDITION PRIOR TO ACCEPTANCE OF WORK.
- 5 CONTRACTOR SHALL COORDINATE THE REMOVAL OF CLEAN UP MATERIAL TO AFFECTED BASIN WITH PERSIGO WASTE WATER TREATMENT PLANT CREWS AFTER CLEAN UP OPERATIONS.
- 6 CONTRACTOR SHALL COORDINATE THE EVALUATION, REPLACEMENT, AND/OR REHABILITATION OF THE 24\"/>

**NOTE**

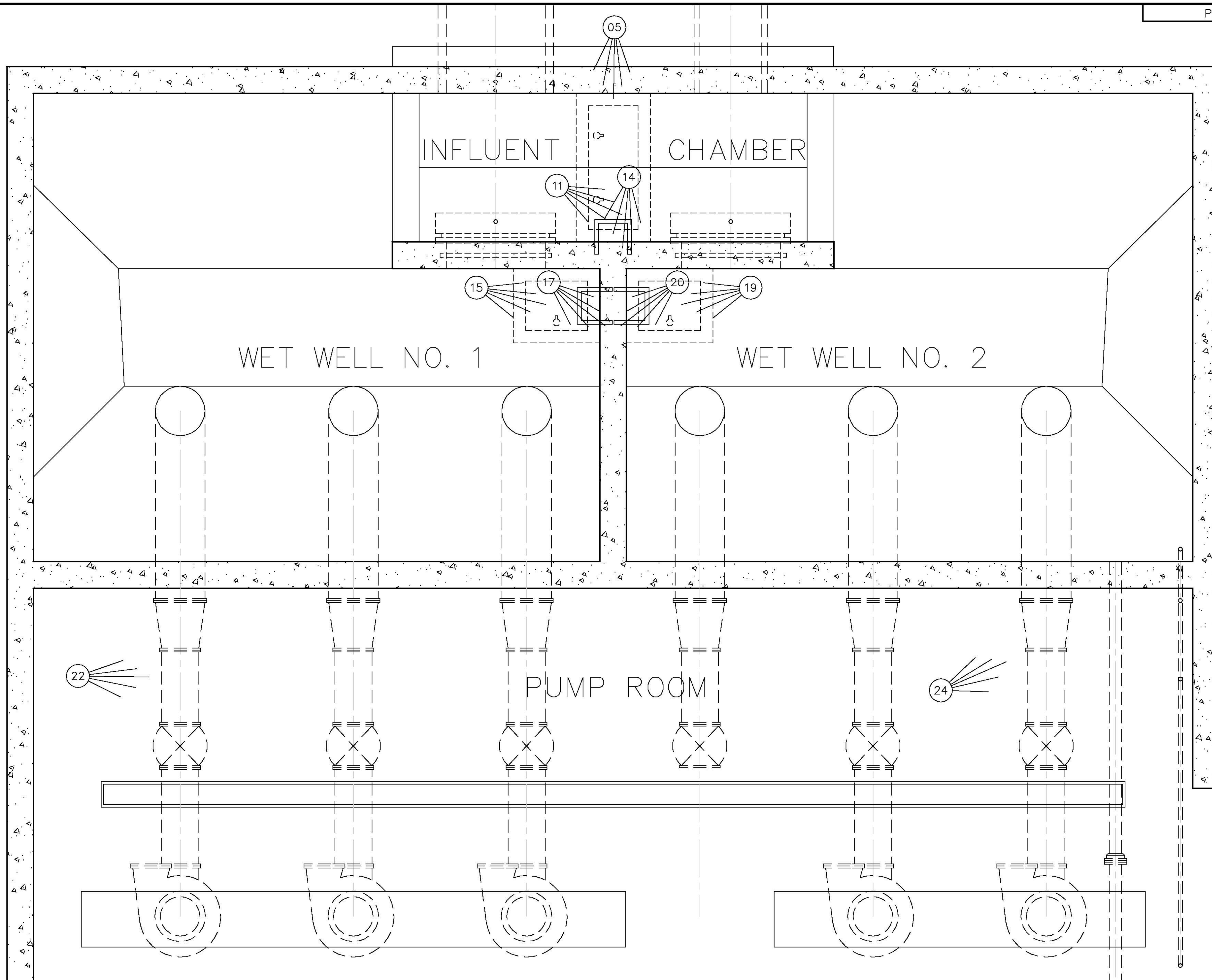
CONTRACTOR SHALL VERIFY ALL DIMENSIONS AND CONDITIONS SHOWN ON PLANS PRIOR TO CONSTRUCTION. PLANS WERE DRAFTED FROM AS BUILT RECORDS AS SUPPLIED BY THE CONTRACTOR OF THE WASTE WATER TREATMENT PLANT AND HAVE NOT BEEN VERIFIED OR SURVEYED BY THE CITY OF GRAND JUNCTION.

REVISION	DESCRIPTION	DATE	DRAWN BY	DATE	SCALE:
REVISION			DESIGNED BY	DATE	
REVISION			CHECKED BY	DATE	
REVISION			APPROVED BY	DATE	
REVISION					



**PUBLIC WORKS  
AND UTILITIES  
ENGINEERING DIVISION**

**Persigo - Raw Sewage Influent  
Chamber and Wet Well Rehabilitation 5  
Section View Sheet**



REVISION	DESCRIPTION	DATE	DRAWN BY	DATE	SCALE:
REVISION			DESIGNED BY	DATE	PLAN 
REVISION			CHECKED BY	DATE	
REVISION			APPROVED BY	DATE	
REVISION					



**PUBLIC WORKS  
AND UTILITIES  
ENGINEERING DIVISION**

**Persigo - Raw Sewage Influent  
Chamber and Wet Well Rehabilitation 6  
Photo Location Map**





05 LOOKING SOUTH AT INFLUENT & WET WELLS ACCESS AND SLUICE VALVE CONTROLLERS



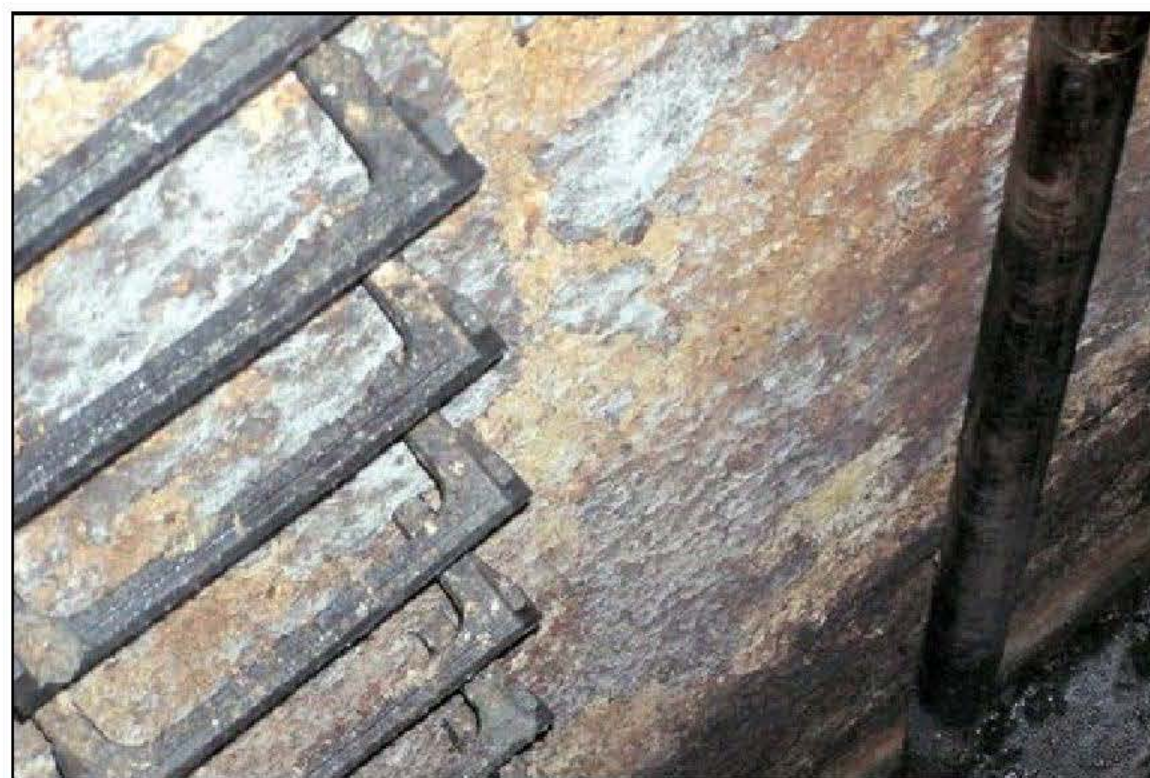
11 LOOKING SOUTHEAST INSIDE INFLUENT CHAMBER AT SOUTH WALL AND ACCESS RUNGS



14 LOOKING SOUTH INSIDE INFLUENT CHAMBER AT SOUTH WALL AND ACCESS RUNGS



15 LOOKING EAST INSIDE WET WELL NO 1 AT EAST WALL AND ACCESS RUNGS



17 LOOKING SOUTH EAST INSIDE WET WELL NO 1 AT EAST WALL AND ACCESS RUNGS



19 LOOKING WEST INSIDE WET WELL NO 2 AT WEST WALL AND ACCESS RUNGS



20 LOOKING SOUTH WEST INSIDE WET WELL NO 2 AT WEST WALL AND ACCESS RUNGS

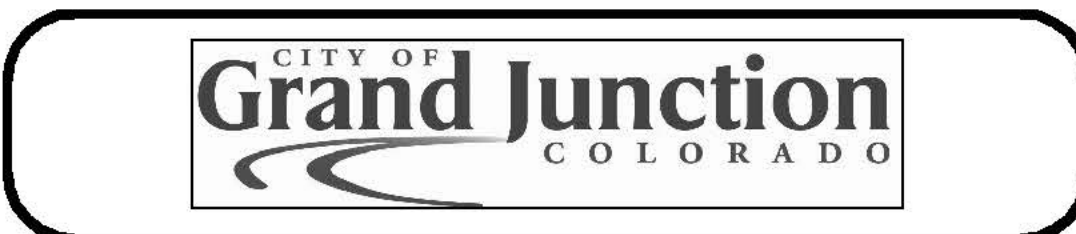


22 LOOKING EAST ACROSS PUMP ROOM AT 24" DUCTILE IRON DISCHARGE PIPES THAT PENETRATE THE SOUTH WALL OF WET WELLS 1 AND 2



24 LOOKING UP AND EAST ACROSS PUMP ROOM AT 6" DUCTILE IRON PIPE FROM PRIMARY SLUDGE PUMP STATION AND 2" DRAIN PIPE

REVISION	DESCRIPTION	DATE	DRAWN BY	DATE	SCALE:
REVISION			DESIGNED BY	DATE	PLAN 
REVISION			CHECKED BY	DATE	
REVISION			APPROVED BY	DATE	
REVISION					



**PUBLIC WORKS AND UTILITIES ENGINEERING DIVISION**