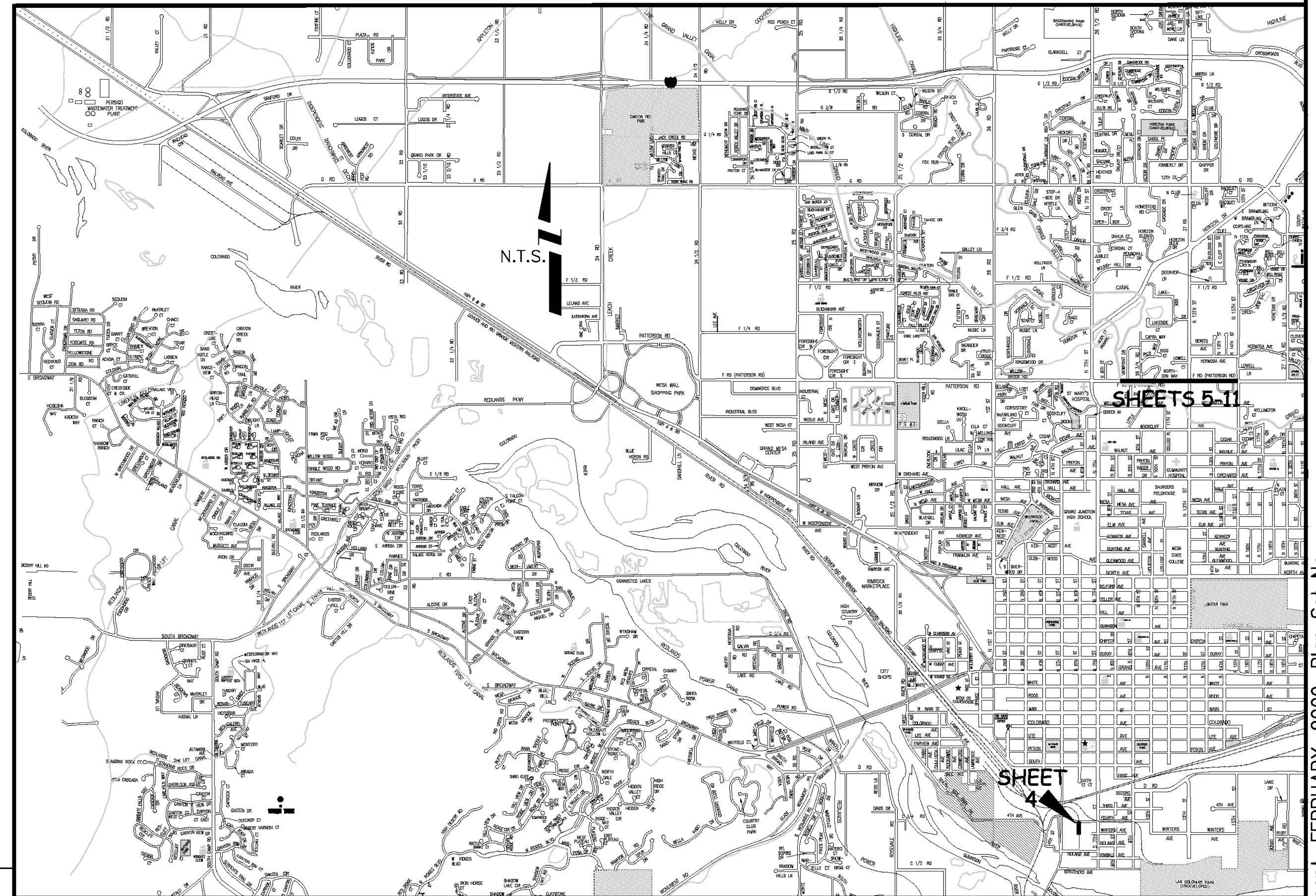


2009 Interceptor Repair and Replacement

FEBRUARY, 2009

VICINITY MAP

- 1-Cover Sheet
- 2-Standard Abbreviations, Legend, and Symbols
- 3-Summary of Approximate Quantities
- 4-Sewer Line CIPP from Riverside Parkway to 4th Ave., East of 5th St. West of 7th St.
- 5-11-Sewer Line CIPP from 800'± East of 7th to 15th Street in Patterson Road



UTILITIES AND AGENCIES

AGENCY	NAME	POSITION	ROLE	MAILING ADDRESS	STREET ADDRESS	CITY, STATE	VOICE-WK	FAX
GRAND JUNCTION, CITY OF	JUSTIN VENSEL	PROJECT MANAGER	PROJECT MANAGER	250 N. 5th STREET	250 N. 5th STREET	GRAND JCT., CO 81501	(970) 256-4017	(970) 256-4022
GRAND JUNCTION, CITY OF	BRET GUILLORY	UTILITY ENGINEER	SANITARY SEWER	250 N. 5th STREET	250 N. 5th STREET	GRAND JCT., CO 81501	(970) 244-1590	(970) 256-4022
GRAND VALLEY IRRIGATION CO.	PHIL BERTRAND		IRRIGATION	688 26 ROAD	688 26 ROAD	GRAND JCT., CO 81506	(970) 242-2762	
BRESNAN	CHUCK WEIDMAN	MANAGER	CABLE TV	2502 FORESIGHT CIRCLE	2502 FORESIGHT CIRCLE	GRAND JCT., CO 81504	(970) 245-8750	(970) 245-6803
U.S. WEST/QWEST	CHRIS JOHNSON	ENGINEER	TELEPHONE	2524 BLICHMANN AVE	2524 BLICHMANN AVE	GRAND JCT., CO 81504	(970) 244-4311	(970) 240-4349
UTE WATER	DARYL MOORE	SUPERVISOR	WATER	PO BOX 460		GRAND JCT., CO 81502	(970) 242-7491	(970) 242-9189
XCEL	DAN STEINKIRCHNER	UNIT MANAGER	GAS, ELECTRIC	2538 BLICHMANN AVE	2538 BLICHMANN AVE	GRAND JCT., CO 81506	(970) 244-2656	(970) 244-2661

DRAWING STATUS:	
●	PROGRESS
○	FINAL CONSTRUCTION DRAWINGS
○	ASBUILT
DESIGNED BY:	
JUSTIN VENSEL, PROJECT MANAGER	DATE
REVIEWED BY:	
BRET GUILLORY, UTILITY ENGINEER	DATE
AUTHORIZED FOR CONSTRUCTION	
TRENTON C. PRALL, CITY ENGINEER	DATE
ACCEPTED AS CONSTRUCTED	
JUSTIN VENSEL, PROJECT MANAGER	DATE

NOTE: NOTIFY AFFECTED UTILITY VENDOR 48 HOURS PRIOR TO EXCAVATIONS THAT WILL EXPOSE UTILITY LINES. THE COVER SHEET WILL HAVE A LISTING OF UTILITY VENDORS AND TELEPHONE NUMBERS.

REVISION	DESCRIPTION	DATE
REVISION ▲	_____	_____
REVISION ▲	_____	_____
REVISION ▲	_____	_____
REVISION ▲	_____	_____



Public Works & Utilities
Engineering Division

ABBREVIATIONS

AASHTO	AMERICAN ASSOCIATION OF STATE HIGHWAY & TRANSPORTATION OFFICIALS
ABC	AGGREGATE BASE COURSE
AC	ASBESTOS CEMENT
AP	ANGLE POINT
ASB	ANCHORED STRAW BALES
ASP	ALUMINIZED STEEL PIPE
ASTM	AMERICAN SOCIETY FOR TESTING MATERIALS
AWWA	AMERICAN WATER WORKS ASSOCIATION
BC	BACK OF CURB
BF	BUTTERFLY VALVE
BOW	BACK OF WALK
BCR	BEGIN CURB RETURN
BOT	BOTTOM
BSWMP	BETTER STORM WATER MANAGEMENT PRACTICES
CH	CHORD
CAP	CORRUGATED ALUMINUM PIPE
CDOT	COLORADO DEPARTMENT OF TRANSPORTATION
CI	CAST IRON
C,G,& SW	CURB, GUTTER & SIDEWALK
C	CENTER LINE
CL	CLEAR
CMP	CORRUGATED METAL PIPE
CO	CLEAN OUT
COMB	COMBINATION (AS IN STORM SEWER AND SANITARY SEWER)
CONC	CONCRETE
CSM	CITY SURVEY MONUMENT
CSP	CORRUGATED STEEL PIPE
CU	COPPER
DI	DUCTILE IRON
DWY	DRIVEWAY
E	ELECTRIC
ECR	END CURB RETURN
EG	EDGE OF GUTTER
EL	ELEVATION
EP	EDGE OF PAVEMENT
EX	EXISTING
FB	FULL BODY
FC	FACE OF CURB
FG	FINISHED GRADE
F	FLOW LINE
FL	FLANGE
FM	FORCE MAIN
FO	FIBER OPTICS
FS	FAR SIDE
FTG	FOOTING
G	GAS
GB	GRADE BREAK
GM	GAS METER
GV	GATE VALVE
HBP	HOT BITUMINOUS PAVEMENT
HDPE	HIGH DENSITY POLYETHYLENE
INV	INVERT
IRR	IRRIGATION
L	LENGTH OF ARC
LC	LONG CHORD
LF	LINEAR FEET
LL	LONG ARC
LS	SHORT ARC
LT	LEFT
MB	MAILBOX
MCSM	MESA COUNTY SURVEY MONUMENT
MH	MANHOLE
MJ	MECHANICAL JOINT
MW	MILL WRAP
N/A	NOT APPLICABLE
NIC	NOT IN CONTRACT
NOP	NO ONE PERSON
NRCP	NON-REINFORCED CONCRETE PIPE
NS	NEAR SIDE
NTS	NOT TO SCALE
OHP	OVERHEAD POWER
OHT	OVERHEAD TELEPHONE
PC	POINT OF CURVATURE
PCC	POINT OF COMPOUND CURVATURE
PE	POLYETHYLENE
PERF	PERFORATED
PI	POINT OF INTERSECTION
PIP	PLASTIC IRRIGATION PIPE
POC	POINT ON CURVE
POT	POINT ON TANGENT
PR	PROPOSED
PRC	POINT OF REVERSE CURVATURE
PT	POINT OF TANGENCY
PVC	POLYVINYL CHLORIDE
R	RADIUS
RCP	REINFORCED CONCRETE PIPE
REQ'D	REQUIRED
RG	RESTRAINED GLANDS
RL	LONG RADIUS
ROW	RIGHT OF WAY
RP	RADIUS POINT
RR	RAIL ROAD
RS	SHORT RADIUS
RT	RIGHT
S	SLOPE
SAN	SANITARY
SC	SHORT CHORD
SCD	STANDARD CONTRACT DOCUMENTS
SCH	SCHEDULE
SF	SILT FENCE
SL	SECTION LINE
SSRB	STANDARD SPECIFICATIONS FOR ROAD & BRIDGE CONSTRUCTION
SSUU	STANDARD SPECIFICATIONS FOR CONSTRUCTION OF UNDERGROUND UTILITIES
STA	STATION
STL	STEEL
STM	STORM
T	TELEPHONE
TAN	LENGTH OF TANGENT
TC	TOP OF CURB
TH	TEST HOLE
TV	TELEVISION
(TYP)	TYPICAL
UU	UNDERGROUND UTILITIES
VC	VERTICAL CURVE
VCP	VITRIFIED CLAY PIPE
VPC	VERTICAL POINT OF CURVATURE
VPC	VERTICAL POINT OF COMPOUND CURVATURE
VPRC	VERTICAL POINT OF REVERSE CURVATURE
VPI	VERTICAL POINT OF INTERSECTION
VPT	VERTICAL POINT OF TANGENCY
W	WATER
Δ	DELTA ANGLE

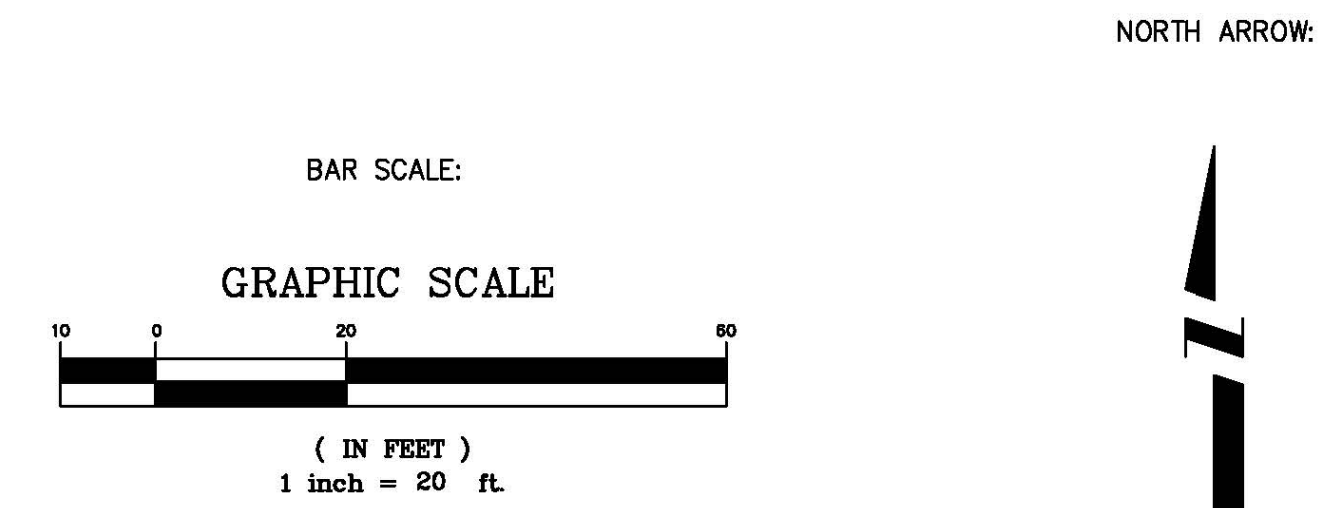
LEGEND

BSWMP DRAINAGE BASIN BOUNDARY	
BSWMP ANCHORED STRAW BALES	
BSWMP SILT FENCE	
BUILDING	
CONCRETE CURB AND GUTTER	
CONCRETE CURB, GUTTER, & SIDEWALK	
CONCRETE DITCH	
CONCRETE SIDEWALK	
CULVERT	
EARTH DITCH	
EDGE OF GRAVEL	
EDGE OF PAVEMENT	
FENCE (BARBED WIRE)	
FENCE (CHAIN LINK)	
FENCE (IRON)	
FENCE (PLASTIC)	
FENCE (WOOD)	
FENCE (WOVEN WIRE)	
GUARD RAIL	
HATCHING: INDICATES ASPHALT REMOVAL	
HATCHING: INDICATES CONCRETE REMOVAL	
HATCHING: INDICATES STAGING AREA	
LINE (CENTER OF IMPROVEMENTS)	
LINE (CITY LIMITS)	
LINE (CONTROL)	
LINE (EASEMENT)	
LINE (MONUMENT/SECTION)	
LINE (PROPERTY)	
LINE (RIGHT OF WAY)	
MATCH LINE	
PIPE (IRRIGATION)	
PIPE (SIPHON)	

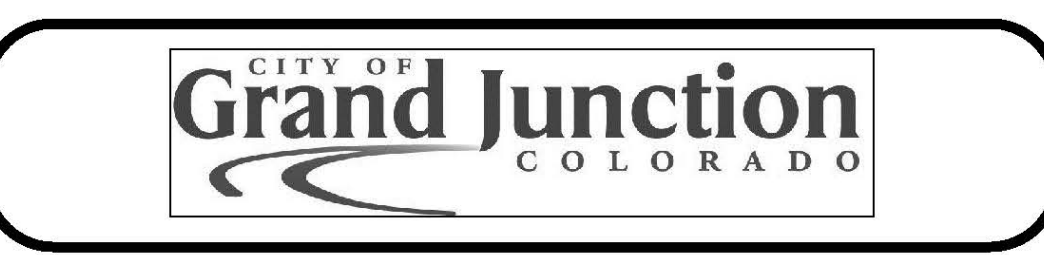
PROPOSED CONCRETE CURB AND GUTTER	
PROPOSED CONCRETE CURB, GUTTER, & SIDEWALK	
PROPOSED CONCRETE SIDEWALK	
PROPOSED "WET" UTILITIES (CONSTRUCTION NOTE WILL INDICATE TYPE, SIZE, AND MATERIAL OF NEW MAIN)	
ALL PROPOSED FEATURES NOT SHOWN IN LEGEND WILL BE SHOWN THE SAME AS THEIR EXISTING COUNTERPART, BUT INDICATED BY BOLDER LINETYPE	
RAIL ROAD	
RETAINING WALL	
STRIPING (CONTINUOUS WHITE)	
STRIPING (DASHED WHITE)	
STRIPING (CONTINUOUS YELLOW)	
STRIPING (DASHED YELLOW)	
TOP OF SLOPE	
CONTOUR LINES (SHOWN BETWEEN TOP & TOE)	
TOE OF SLOPE	
TRAFFIC DETECTOR LOOP	
UTILITY LINE (ABANDON) (THIS CASE A WATER LINE)	
UTILITY LINE (CABLE TV)	
UTILITY LINE (ELECTRIC)	
UTILITY LINE (FIBER OPTIC)	
UTILITY LINE (GAS)	
UTILITY LINE (HIGH VOLTAGE OVERHEAD POWER)	
UTILITY LINE (OVERHEAD POWER)	
UTILITY LINE (OVERHEAD TELEPHONE)	
UTILITY LINE (SANITARY SEWER)	
UTILITY LINE (SANITARY SEWER FORCE MAIN)	
UTILITY LINE (SANITARY SEWER SERVICE)	
UTILITY LINE (STORM SEWER)	
UTILITY LINE (STORM SEWER, PERFORATED)	
UTILITY LINE (STORM/SANITARY SEWER SEWER COMBINATION)	
UTILITY LINE (TELEPHONE)	
UTILITY LINE (WATER)	

SYMBOLS

BENCH MARK	
CATCH BASIN	
CLEAN OUT	
CURB STOP	
FIRE HYDRANT	
GUY WIRE ANCHOR	
HEADGATE	
IRRIGATION PUMP	
MAILBOX	
MANHOLE (ELECTRIC)	
MANHOLE (GAS)	
MANHOLE (SANITARY/STORM)	
MANHOLE (TELEPHONE)	
MANHOLE (TV)	
MANHOLE (WATER)	
METER (GAS)	
METER (WATER)	
PEDESTAL (TELEPHONE)	
PEDESTAL (TV)	
PROPERTY PIN	
PULL BOX	
REDUCER FITTING	
SIGN OR POST (SIGN TYPE NOTED)	
SPRINKLER HEAD	
STREET LIGHT	
SURVEY MONUMENT (CITY)	
SURVEY MONUMENT (TYPE NOTED)	
TEST HOLE	
TRAFFIC PAINT MARKING	
TRAFFIC SIGNAL POLE AND MAST ARM	
UTILITY POLE	
VALVE (GAS)	
VALVE (IRRIGATION)	
VALVE (WATER)	
VEGETATION (HEDGE OR BUSH)	
VEGETATION (TREE STUMP)	
VEGETATION (TREE) (CALIPER SIZE NOTED)	
WATER HYDRANT	
WEIR	
YARD LIGHT	



REVISION Δ	DESCRIPTION	DATE	DRAWN BY JCS	DATE 4-02	SCALE
REVISION Δ			DESIGNED BY	DATE	PLAN PROFILE
REVISION Δ			CHECKED BY	DATE	HORIZ. 1"=20' HORIZ.
REVISION Δ			APPROVED BY	DATE	VERT.



PUBLIC WORKS AND UTILITIES ENGINEERING DIVISION

CITY OF GRAND JUNCTION STANDARD ABBREVIATIONS, LEGEND, AND SYMBOLS SHEET

Bid Schedule: 2009 SEWER INTERCEPTOR REHABILITATION

Item No.	CDOT, City Ref.	Description	Quantity	Units	Unit Price	Total Price
1	SP	15 inch CIPP (Complete in Place) (Cleaning, Video, Testing, CIPP (Liner 0.24 inch (6mm)), Steam Cure, & Service Connections.	3,462.	LF	\$ _____	\$ _____
2	SP	Bypass pumping per City Specifications.		Lump Sum	---	\$ _____
3	108.5	Sanitary Sewer Basic Manhole (48" I.D.)	1.	EA	\$ _____	\$ _____
4	108.5	Manhole Barrel Section (D>5')(48" I.D.)	4.	VF	\$ _____	\$ _____
5	202	Abandon Pipe, Abandon by Plugging Remaining Ends with Concrete		Lump sum	---	\$ _____
6	304/401	Hot Mix Asphalt (Patching) 6" Thick (Grading SX, Binder 64-22) Include Class 6 Aggregate Base Course (12" Thick)	10.	SY	\$ _____	\$ _____
7	626	Mobilization.		Lump Sum	---	\$ _____
8	630	Traffic Control (Complete In Place).		Lump Sum	---	\$ _____
9	630	Traffic Control Plan.		Lump Sum	---	\$ _____
MCR		Minor Contract Revisions	---	---	---	\$ 15,000.00
Bid Amount:					\$ _____	

Bid Amount:

_____ dollars

BF-2 (1 of 1)

<u>REVISION</u> Δ	<u>DESCRIPTION</u>	<u>DATE</u>	<u>DRAWN BY</u> _____	<u>DATE</u> _____
<u>REVISION</u> Δ	_____	_____	<u>DESIGNED BY</u> _____	<u>DATE</u> _____
<u>REVISION</u> Δ	_____	_____	<u>CHECKED BY</u> _____	<u>DATE</u> _____
<u>REVISION</u> Δ	_____	_____	<u>APPROVED BY</u> _____	<u>DATE</u> _____

SCALE
N.T.S.



**PUBLIC WORKS
AND UTILITIES
ENGINEERING DIVISION**

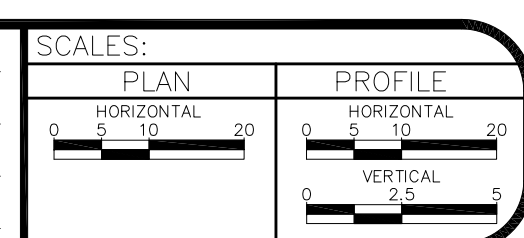
**2009 Interceptor Repair and Replacement
SUMMARY OF APPROXIMATE QUANTITIES**

- 1 CURED IN PLACE SANITARY SEWER PIPE PER PROJECT SPECIFICATIONS. DURING NEW PIPE INSTALLATION IT WILL BE NECESSARY TO BYPASS PUMP SEWAGE AROUND WORK AREA TO A DOWNSTREAM MANHOLE. IF NECESSARY PROVIDE TRAFFIC CONTROL IN WORK AREA AND BYPASS AREA. MAINTAIN ACCESS TO ALL BUSINESSES AND RESIDENCES AND TWO WAY TRAFFIC.



REVISION	DESCRIPTION	DATE

DRAWN BY	JCS	DATE	2009
DESIGNED BY		DATE	
CHECKED BY		DATE	
APPROVED BY		DATE	



**PUBLIC WORKS
AND UTILITIES
ENGINEERING DIVISION**

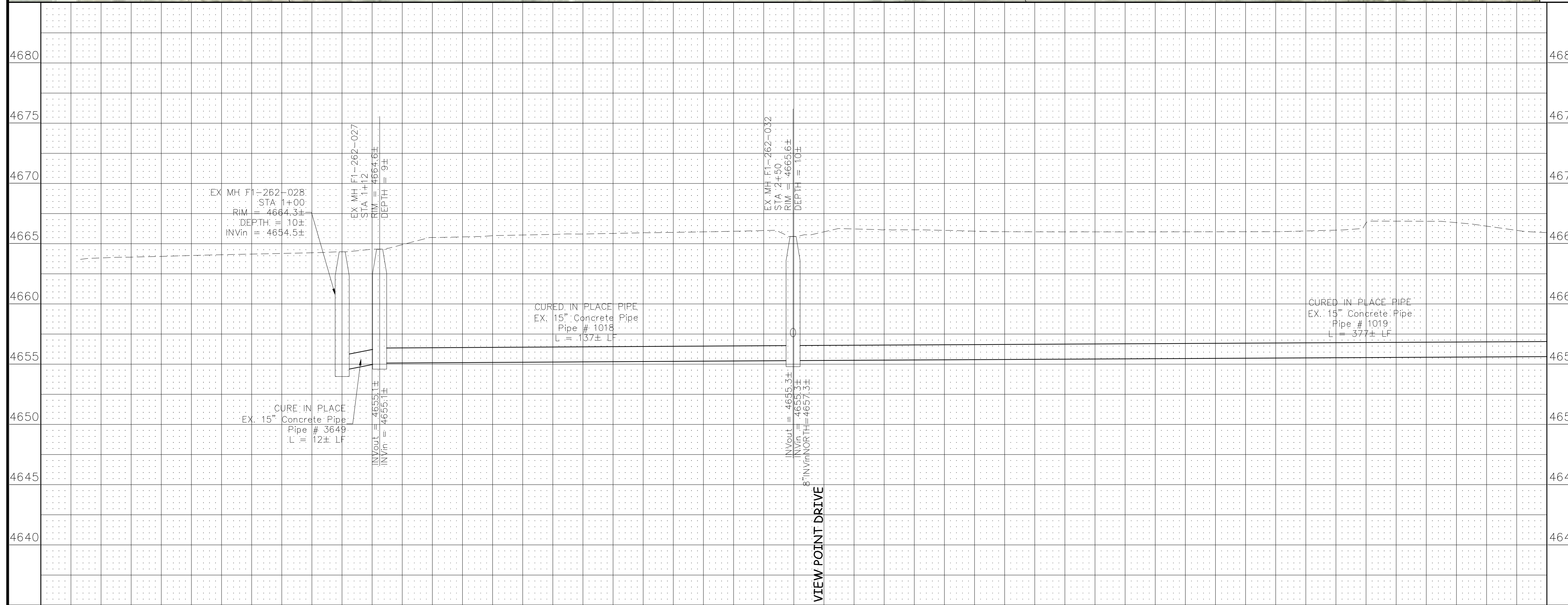
**2009 Interceptor Repair and Replacement
Sanitary Sewer Plan and Profiles
STA 0+00 TO STA 5+00**

- 1 SP CURED IN PLACE SANITARY SEWER PIPE PER PROJECT SPECIFICATIONS. DURING NEW PIPE INSTALLATION IT WILL BE NECESSARY TO BYPASS PUMP SEWAGE AROUND WORK AREA TO A DOWNSTREAM MANHOLE. IF NECESSARY PROVIDE TRAFFIC CONTROL IN WORK AREA AND BYPASS AREA. MAINTAIN ACCESS TO ALL BUSINESSES AND RESIDENCES AND TWO WAY TRAFFIC.



SEE SHEET 6

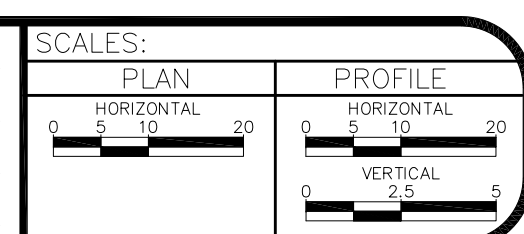
MATCH LINE



XX+XX 1+00 2+00 3+00 4+00 5+00

REVISION	DESCRIPTION	DATE

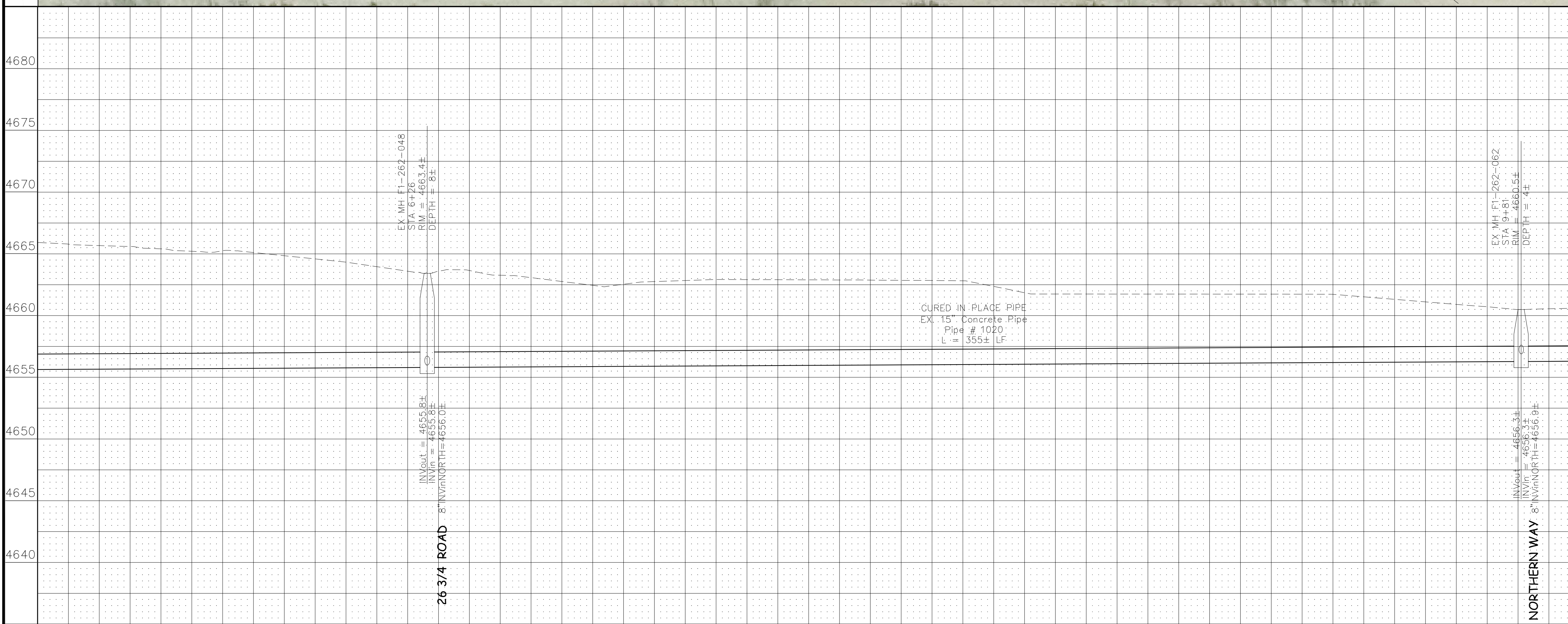
DRAWN BY: JCS DATE: 2009
 DESIGNED BY: DATE:
 CHECKED BY: DATE:
 APPROVED BY: DATE:



PUBLIC WORKS
 AND UTILITIES
 ENGINEERING DIVISION

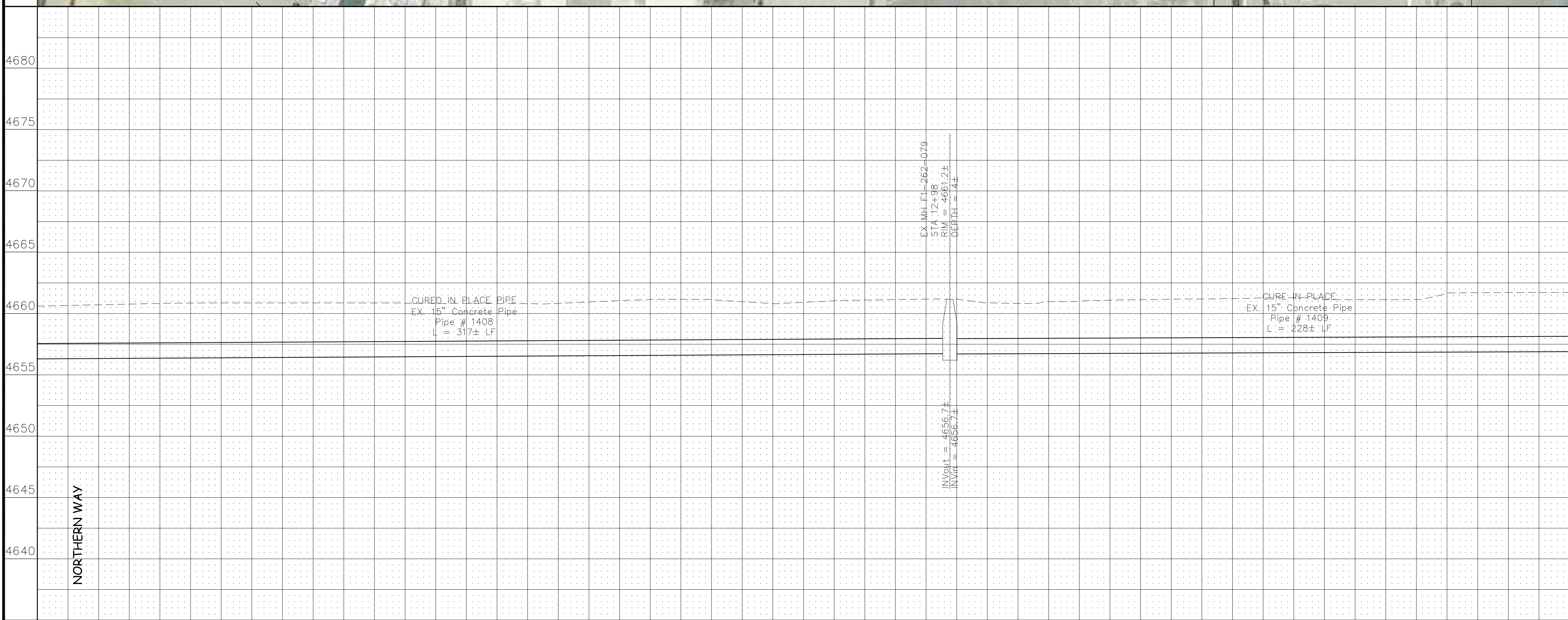
2009 Interceptor Repair and Replacement
 Sanitary Sewer Plan and Profiles
 STA 0+00 TO STA 5+00

- ① SP CURED IN PLACE SANITARY SEWER PIPE PER PROJECT SPECIFICATIONS. DURING NEW PIPE INSTALLATION IT WILL BE NECESSARY TO BYPASS PUMP SEWAGE AROUND WORK AREA TO A DOWNSTREAM MANHOLE. IF NECESSARY PROVIDE TRAFFIC CONTROL IN WORK AREA AND BYPASS AREA. MAINTAIN ACCESS TO ALL BUSINESSES AND RESIDENCES AND TWO WAY TRAFFIC.



REVISION Δ _____ REVISION Δ _____ REVISION Δ _____ REVISION Δ _____	DESCRIPTION _____ _____ _____ _____	DATE _____ _____ _____ _____	DRAWN BY: JCS DATE: 2009 DESIGNED BY: _____ DATE: _____ CHECKED BY: _____ DATE: _____ APPROVED BY: _____ DATE: _____	SCALES: PLAN: HORIZONTAL 1"=20' PROFILE: HORIZONTAL 1"=20' VERTICAL 1"=5'		PUBLIC WORKS AND UTILITIES ENGINEERING DIVISION	2009 Interceptor Repair and Replacement Sanitary Sewer Plan and Profiles STA 5+00 TO STA 10+00
--	--	---------------------------------------	---	--	--	---	--

- ① SP CURED IN PLACE SANITARY SEWER PIPE PER PROJECT SPECIFICATIONS. DURING NEW PIPE INSTALLATION IT WILL BE NECESSARY TO BYPASS PUMP SEWAGE AROUND WORK AREA TO A DOWNSTREAM MANHOLE. IF NECESSARY PROVIDE TRAFFIC CONTROL IN WORK AREA AND BYPASS AREA. MAINTAIN ACCESS TO ALL BUSINESSES AND RESIDENCES AND TWO WAY TRAFFIC.



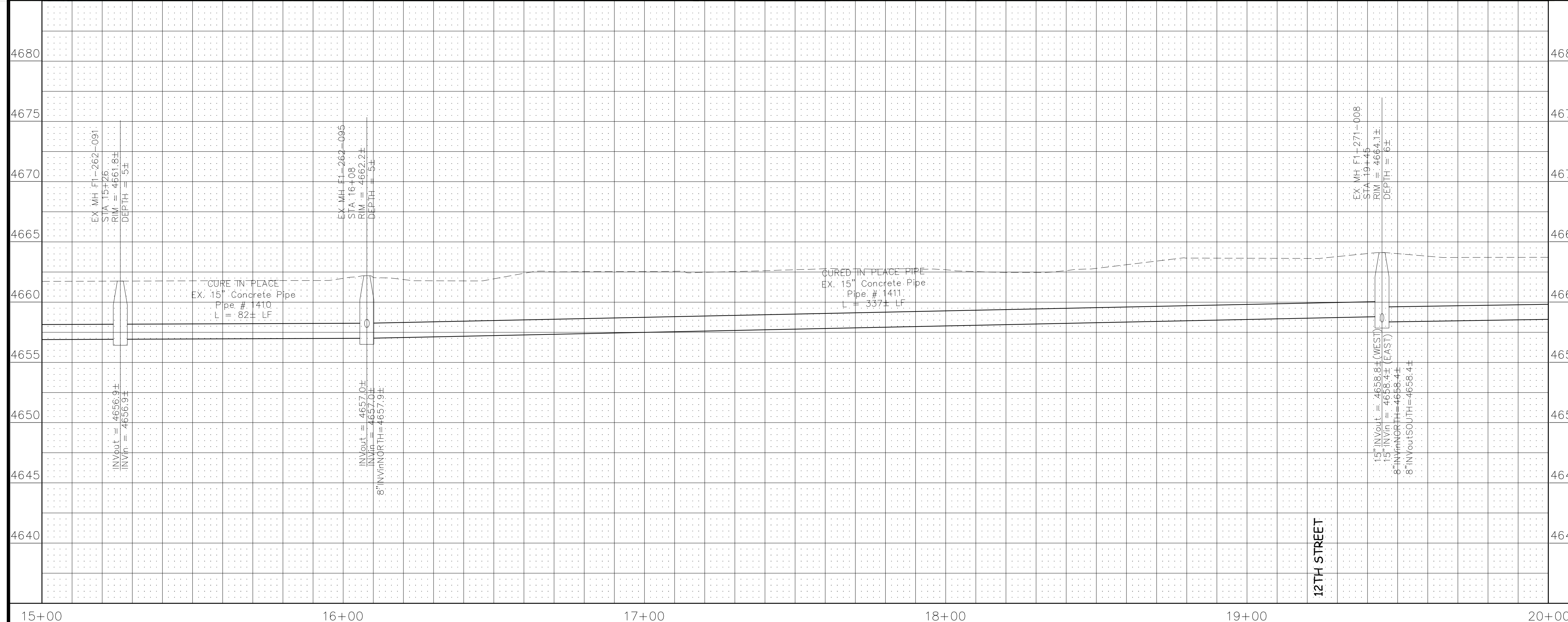
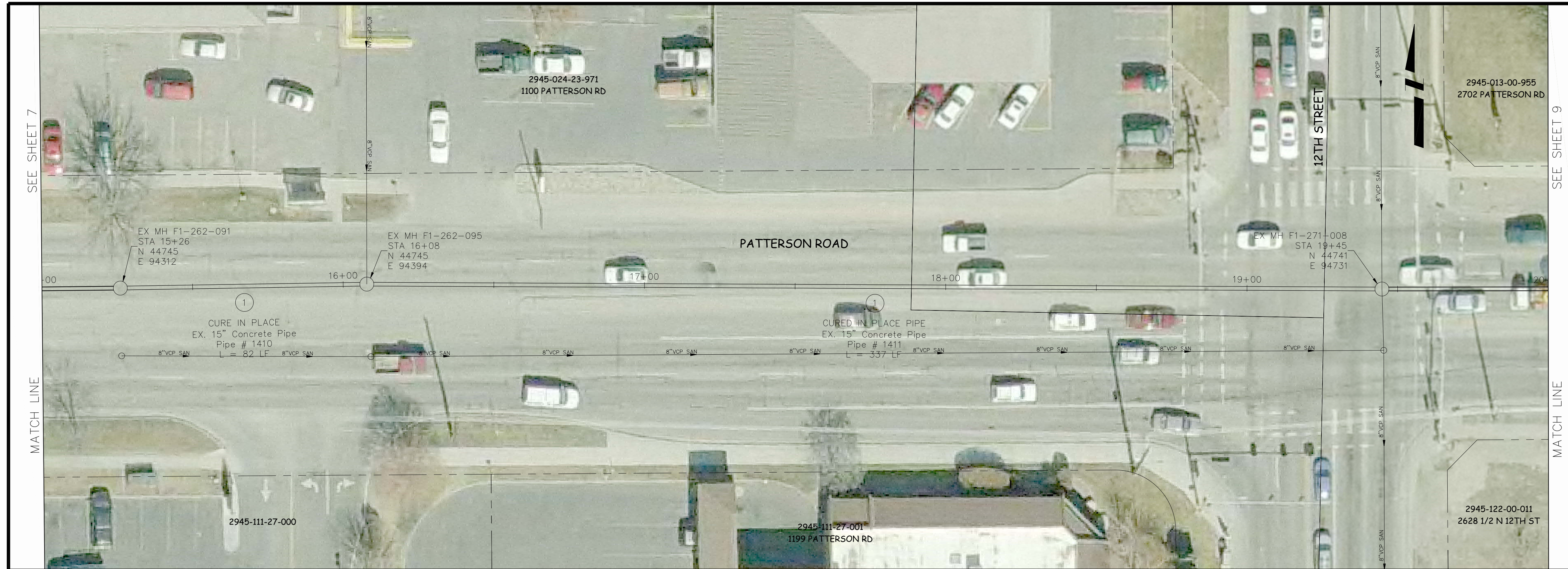
10+00	11+00	12+00	13+00	14+00	15+00
REVISION Δ	DESCRIPTION	DATE	DRAWN BY: XXX	DATE: 200X	SCALES:
REVISION Δ			DESIGNED BY:	DATE:	PLAN: HORIZONTAL 1"=20'
REVISION Δ			CHECKED BY:	DATE:	PROFILE: HORIZONTAL 1"=20'
REVISION Δ			APPROVED BY:	DATE:	VERTICAL 1"=5'



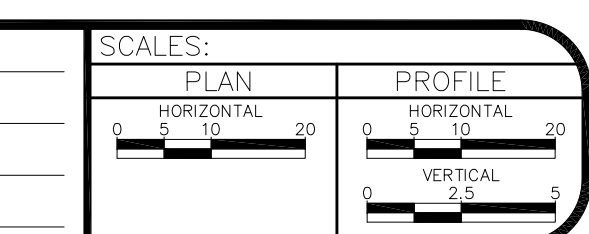
**PUBLIC WORKS
AND UTILITIES
ENGINEERING DIVISION**

**2009 Interceptor Repair and Replacement
Sanitary Sewer Plan and Profiles
STA 10+00 TO STA 15+00**

- ① SP CURED IN PLACE SANITARY SEWER PIPE PER PROJECT SPECIFICATIONS. DURING NEW PIPE INSTALLATION IT WILL BE NECESSARY TO BYPASS PUMP SEWAGE AROUND WORK AREA TO A DOWNSTREAM MANHOLE. IF NECESSARY PROVIDE TRAFFIC CONTROL IN WORK AREA AND BYPASS AREA. MAINTAIN ACCESS TO ALL BUSINESSES AND RESIDENCES AND TWO WAY TRAFFIC.



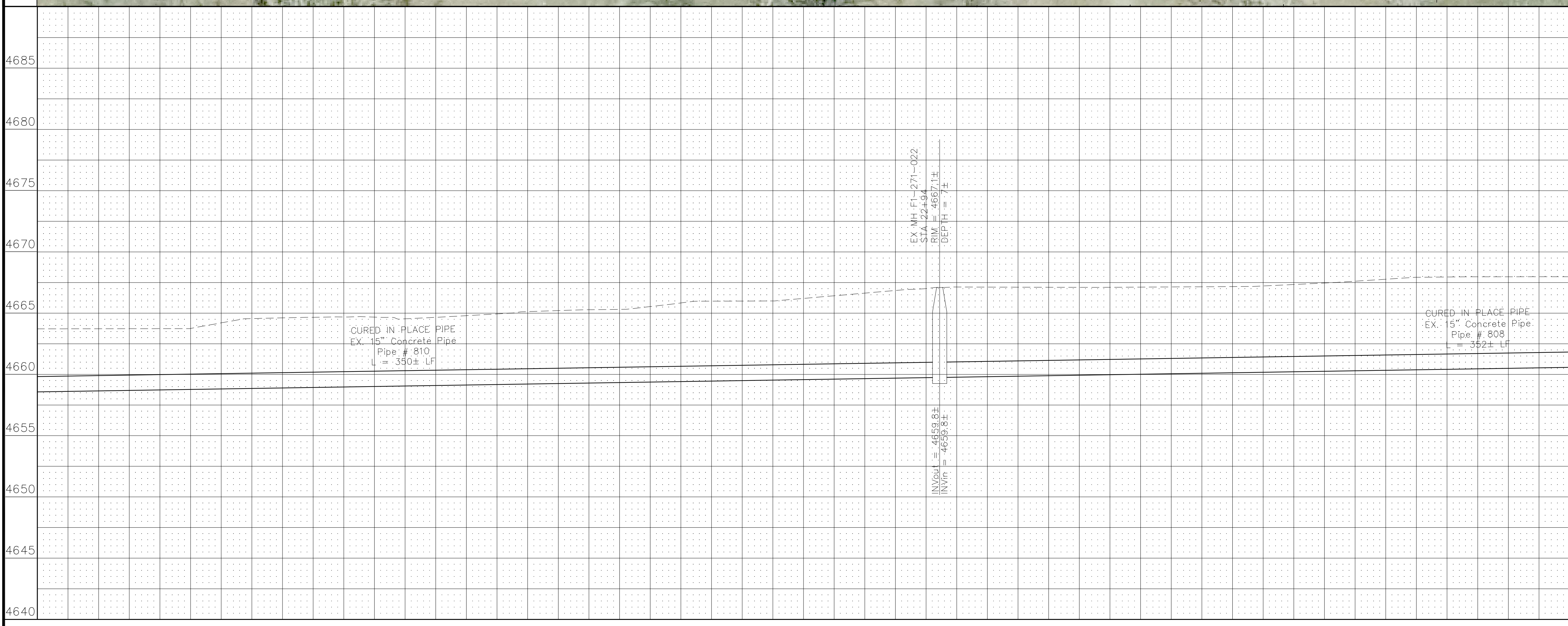
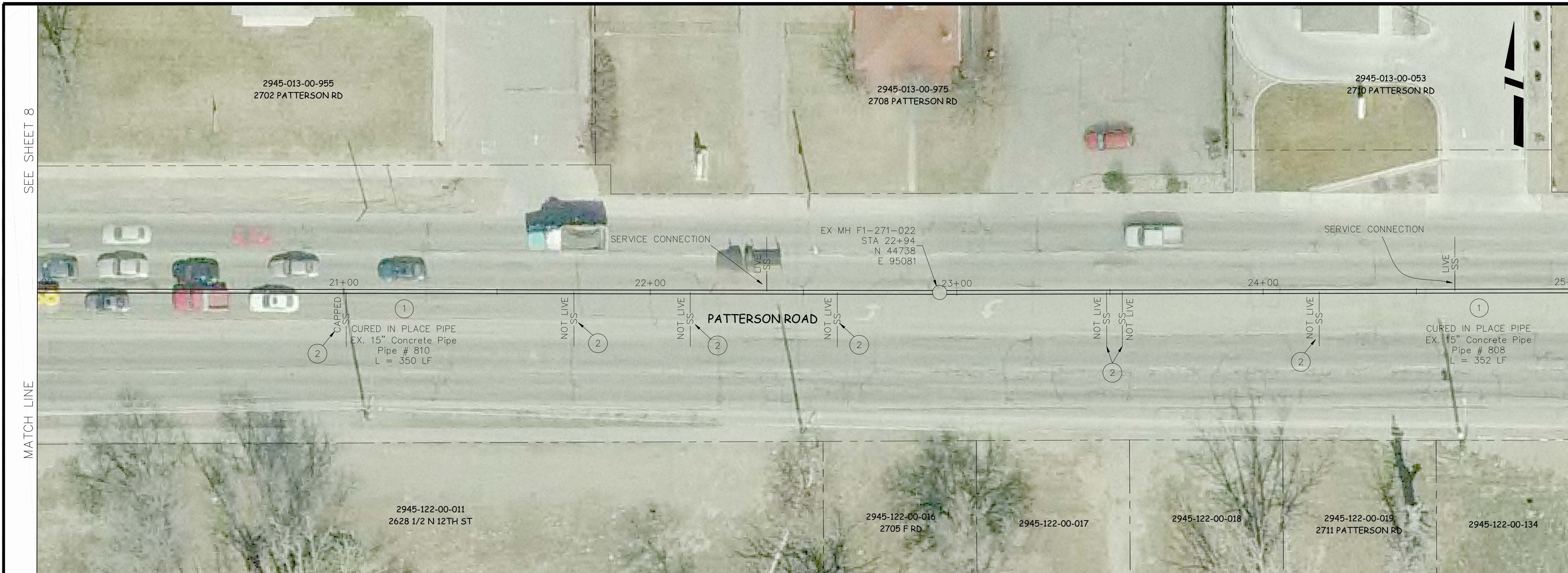
REVISION	DESCRIPTION	DATE	DRAWN BY	JCS	DATE	2009
REVISION			DESIGNED BY		DATE	
REVISION			CHECKED BY		DATE	
REVISION			APPROVED BY		DATE	



PUBLIC WORKS
AND UTILITIES
ENGINEERING DIVISION

2009 Interceptor Repair and Replacement
Sanitary Sewer Plan and Profiles
STA 15+00 TO STA 20+00

- ① SP CURED IN PLACE SANITARY SEWER PIPE PER PROJECT SPECIFICATIONS. DURING NEW PIPE INSTALLATION IT WILL BE NECESSARY TO BYPASS PUMP SEWAGE AROUND WORK AREA TO A DOWNSTREAM MANHOLE. IF NECESSARY PROVIDE TRAFFIC CONTROL IN WORK AREA AND BYPASS AREA. MAINTAIN ACCESS TO ALL BUSINESSES AND RESIDENCES AND TWO WAY TRAFFIC.
- ② CURRENT TAP IS NOT ACTIVE, CONTRACTOR SHALL CONSIDER THIS TAP ABANDON AND SHALL NOT CORE THE LINER.



REVISION Δ _____ REVISION Δ _____ REVISION Δ _____ REVISION Δ _____	DESCRIPTION _____ _____ _____ _____	DATE _____ DATE _____ DATE _____ DATE _____	DRAWN BY JCS DESIGNED BY _____ CHECKED BY _____ APPROVED BY _____	DATE 2009 DATE _____ DATE _____ DATE _____	SCALES: PLAN HORIZONTAL 1" = 20' PROFILE HORIZONTAL 1" = 20' VERTICAL 1" = 5'		PUBLIC WORKS AND UTILITIES ENGINEERING DIVISION	2009 Interceptor Repair and Replacement Sanitary Sewer Plan and Profiles STA 20+00 TO STA 25+00
--	--	--	--	---	--	--	---	---

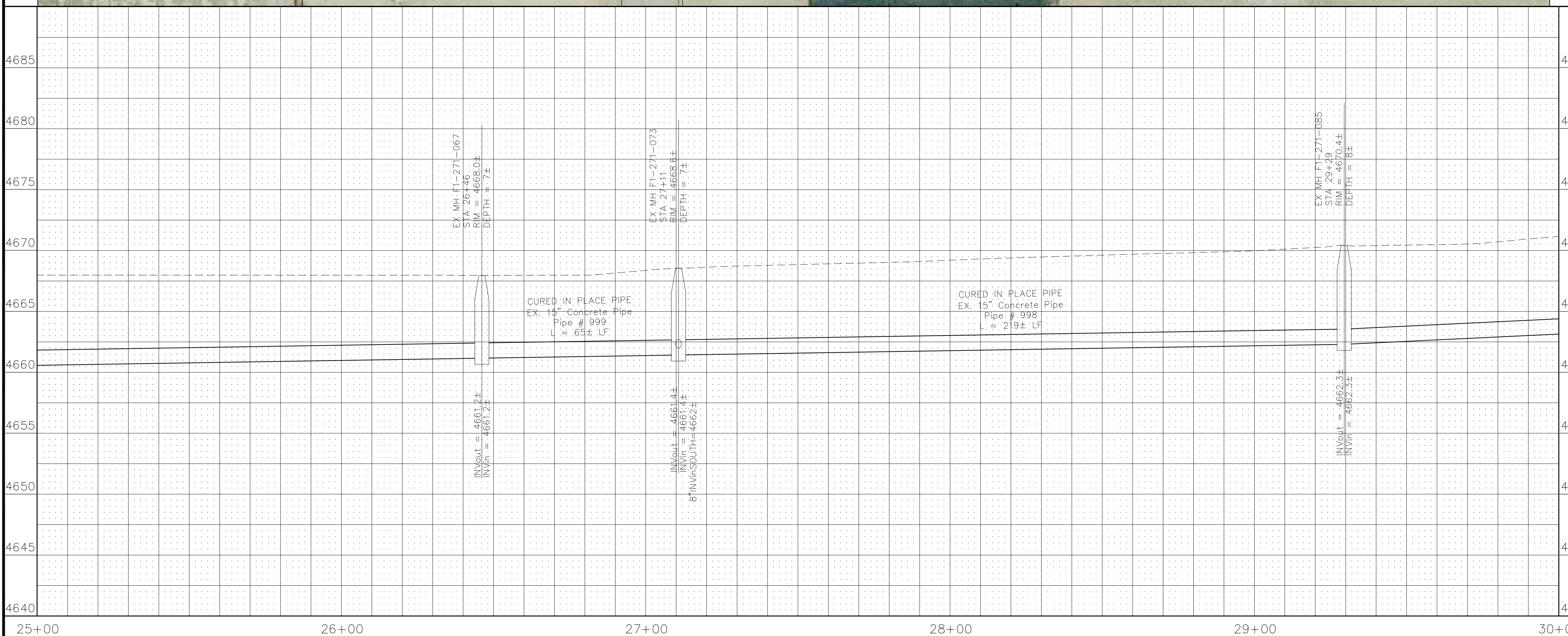
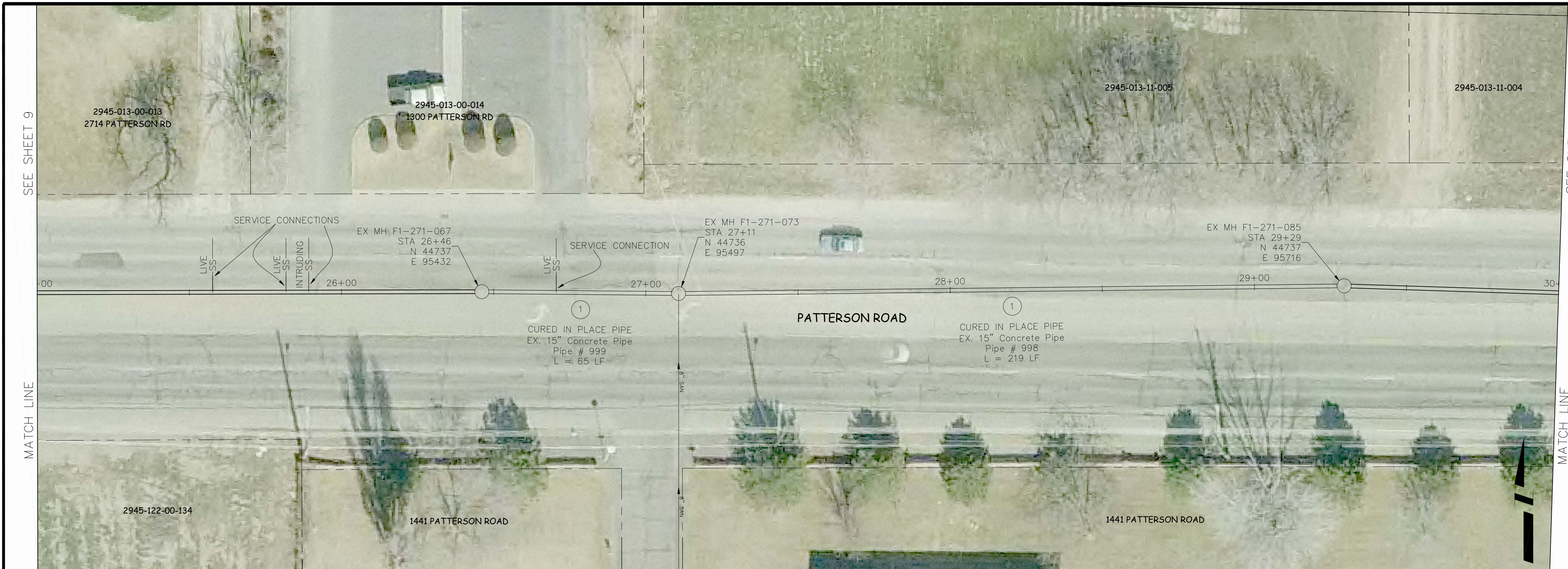
SEE SHEET 8

MATCH LINE

SEE SHEET 10

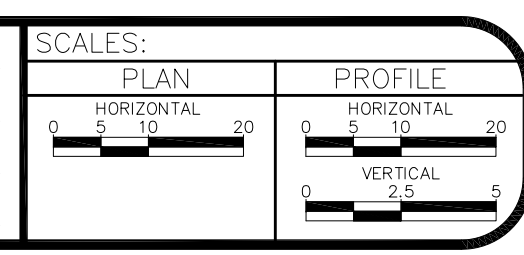
MATCH LINE

- ① SP CURED IN PLACE SANITARY SEWER PIPE PER PROJECT SPECIFICATIONS. DURING NEW PIPE INSTALLATION IT WILL BE NECESSARY TO BYPASS PUMP SEWAGE AROUND WORK AREA TO A DOWNSTREAM MANHOLE. IF NECESSARY PROVIDE TRAFFIC CONTROL IN WORK AREA AND BYPASS AREA. MAINTAIN ACCESS TO ALL BUSINESSES AND RESIDENCES AND TWO WAY TRAFFIC.



REVISION	DESCRIPTION	DATE

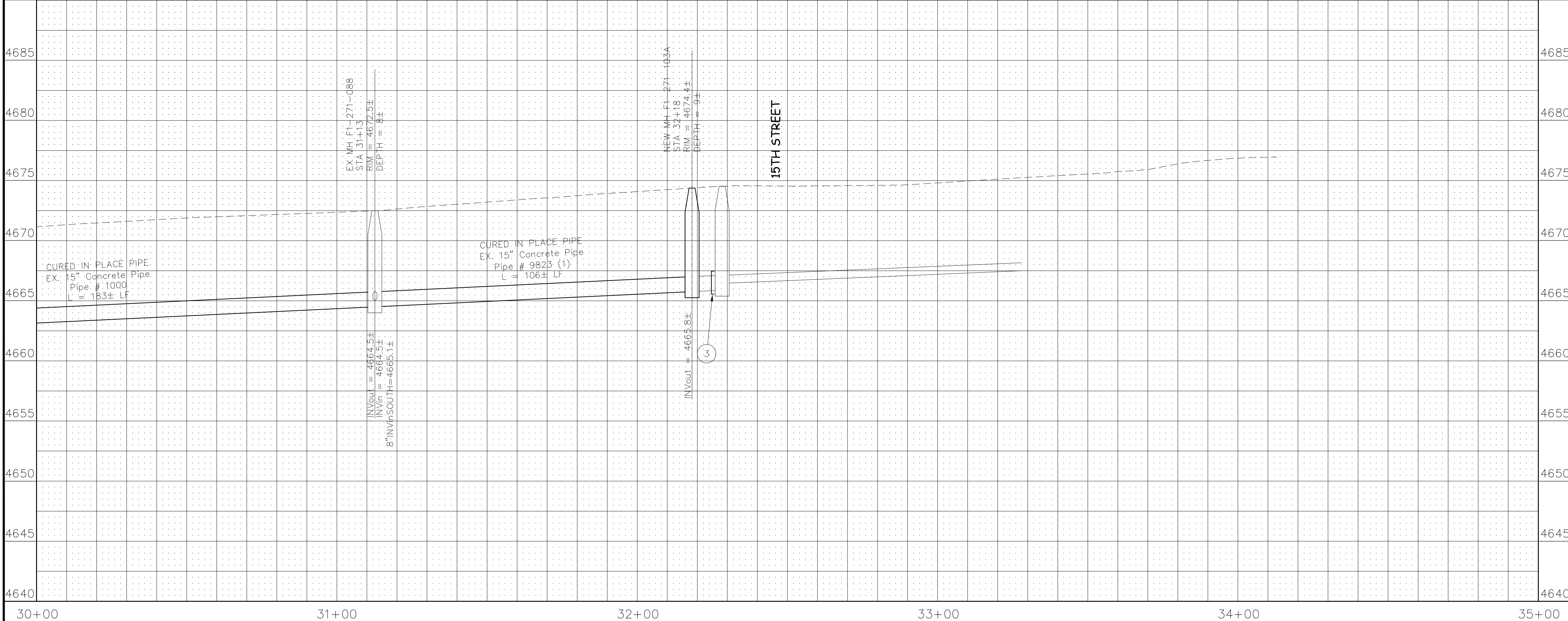
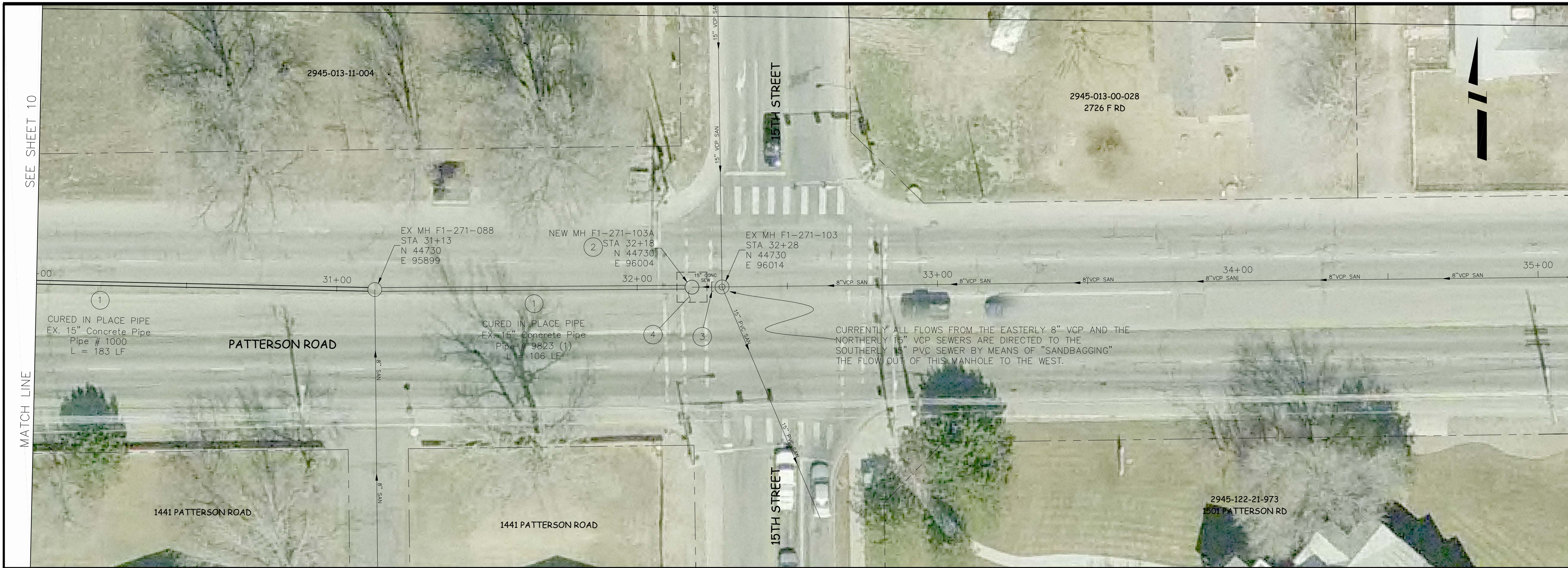
DRAWN BY: JCS	DATE: 2009
DESIGNED BY: _____	DATE: _____
CHECKED BY: _____	DATE: _____
APPROVED BY: _____	DATE: _____



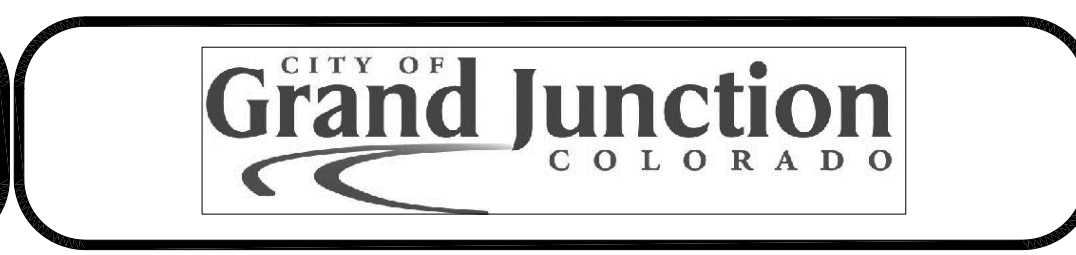
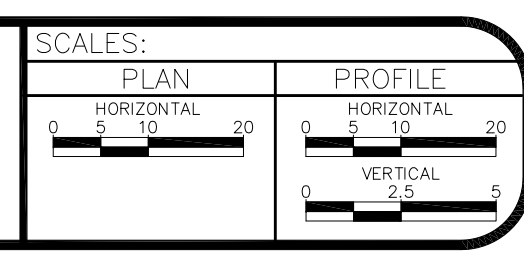
PUBLIC WORKS AND UTILITIES ENGINEERING DIVISION

2009 Interceptor Repair and Replacement Sanitary Sewer Plan and Profiles STA 25+00 TO STA 30+00

- 1 SP CURED IN PLACE SANITARY SEWER PIPE PER PROJECT SPECIFICATIONS. DURING NEW PIPE INSTALLATION IT WILL BE NECESSARY TO BYPASS PUMP SEWAGE AROUND WORK AREA TO A DOWNSTREAM MANHOLE. IF NECESSARY PROVIDE TRAFFIC CONTROL IN WORK AREA AND BYPASS AREA. MAINTAIN ACCESS TO ALL BUSINESSES AND RESIDENCES AND TWO WAY TRAFFIC.
- 2 102.11/108.5 - SANITARY SEWER BASIC MANHOLE (48" I.D.). INCLUDES CONNECTION OF ADJACENT SEWER LINE, FORMING INVERTS AND ADJUSTING TO FINAL GRADE. (SEE CITY OF GRAND JUNCTION STANDARD DETAIL SS-02).
- 3 202 - ABANDON PIPE. ABANDON BY PLUGGING REMAINING ENDS WITH CONCRETE.
- 4 202, 401 - CUT AND REMOVE EXISTING ASPHALT (10' SQUARE AROUND MANHOLE) AS SHOWN. PATCH WITH 6" HOT MIX ASPHALT (GRADING 5X) OVER 6" AGGREGATE BASE COURSE (CLASS 6). SEE STANDARD CONTRACT DOCUMENTS, ASPHALT PATCHING C-27.



REVISION	DESCRIPTION	DATE	DRAWN BY	DATE
			JCS	2009
			DESIGNED BY	DATE
			CHECKED BY	DATE
			APPROVED BY	DATE



**PUBLIC WORKS
AND UTILITIES
ENGINEERING DIVISION**

**2009 Interceptor Repair and Replacement
Sanitary Sewer Plan and Profiles
STA 30+00 TO STA 35+00**