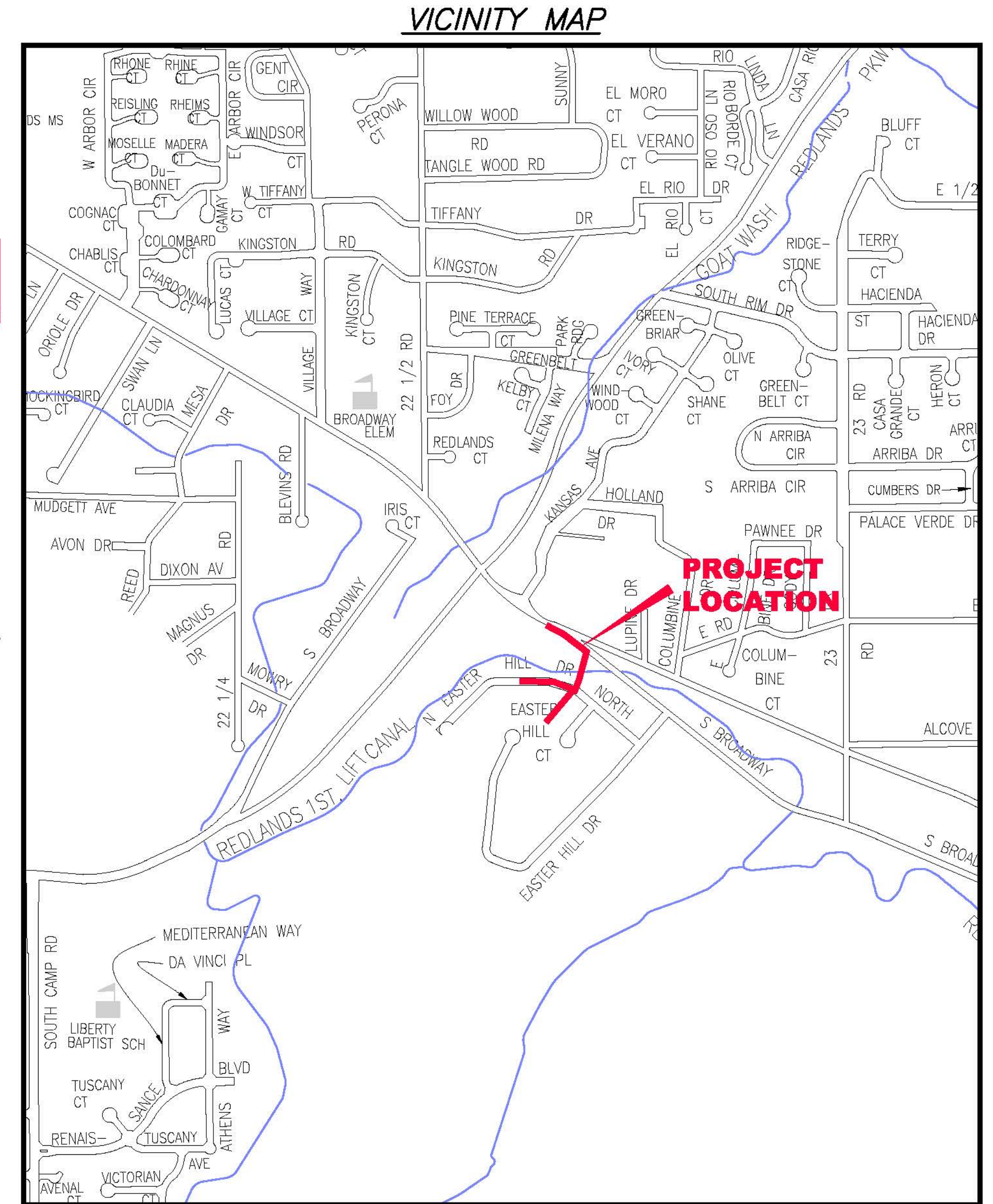


# EASTER HILL SEWER IMPROVEMENT DISTRICT FEBRUARY, 2010

AS BUILT 9-2010  
CONTRACTOR:  
SORTER CONSTRUCTION

- 1 — Cover Sheet
- 2 — Standard Abbreviations, Legend, and Symbols
- 3 — Summary of Approximate Quantities
- 4 — Project Control Map
- 5 — Sanitary Sewer Plan and Profile Sta. 0+00 — 3+50
- 6 — Sanitary Sewer Plan and Profile Sta. 3+50 — 6+50
- 7 — Sanitary Sewer Plan and Profile Sta. 6+50 — 10+48
- 8 — Sanitary Sewer Service Plans and Profile
- △ 9 — Sanitary Sewer Service Plan and Profile



UTILITIES AND AGENCIES								
AGENCY	NAME	POSITION	ROLE	MAILING ADDRESS	STREET ADDRESS	CITY, STATE	VOICE-WK	FAX
GRAND JUNCTION, CITY OF	JUSTIN VENSEL	PROJECT ENGINEER	PROJECT ENGINEER	250 N. 5th STREET	250 N. 5th STREET	GRAND JCT., CO 81501	(970) 256-4017	(970) 256-4022
GRAND JUNCTION, CITY OF	BRET GUILLORY	UTILITY ENGINEER	SANITARY SEWER	250 N. 5th STREET	250 N. 5th STREET	GRAND JCT., CO 81501	(970) 244-1590	(970) 256-4022
REDLANDS POWER & WATER	KEVIN JONES		IRRIGATION				(970)243-2173	
BRESNAN	CHUCK WEIDMAN	MANAGER	CABLE TV	2502 FORESIGHT CIRCLE	2502 FORESIGHT CIRCLE	GRAND JCT., CO 81504	(970) 245-8750	(970) 245-6803
U.S. WEST/QWEST	CHRIS JOHNSON	ENGINEER	TELEPHONE	2524 BLICHMANN AVE	2524 BLICHMANN AVE	GRAND JCT., CO 81504	(970) 244-4311	(970) 240-4349
UTE WATER	DARYL MOORE	SUPERVISOR	WATER	PO BOX 460		GRAND JCT., CO 81502	(970) 242-7491	(970) 242-9189
XCEL	DAN STEINKIRCHNER	UNIT MANAGER	GAS, ELECTRIC	2538 BLICHMANN AVE	2538 BLICHMANN AVE	GRAND JCT., CO 81506	(970) 244-2656	(970) 244-2661
XCEL	TILMAN MCSCHOOLER	PLANNING - DESIGN SVC.	GAS	2538 BLICHMANN AVE	2538 BLICHMANN AVE	GRAND JCT., CO 81506	(970) 244-2695	(970) 244-2661



*Public Works & Utilities  
Engineering Division*

NOTE: NOTIFY AFFECTED UTILITY VENDOR 48 HOURS PRIOR TO EXCAVATIONS THAT WILL EXPOSE UTILITY LINES. THE COVER SHEET WILL HAVE A LISTING OF UTILITY VENDORS AND TELEPHONE NUMBERS.

REVISION	DESCRIPTION	DATE
REVISION △	ADDENDUM 1	3/1/2010
REVISION △		
REVISION △		
REVISION △		

<b>DRAWING STATUS:</b>	
○	PROGRESS
●	FINAL CONSTRUCTION DRAWINGS
○	ASBUILT
<b>DESIGNED BY:</b>	
JUSTIN VENSEL, PROJECT ENGINEER	DATE
<b>REVIEWED BY:</b>	
BRET GUILLORY, UTILITY ENGINEER	DATE
<b>AUTHORIZED FOR CONSTRUCTION</b>	
TRENTON C. PRALL, CITY ENGINEER	DATE
<b>ACCEPTED AS CONSTRUCTED</b>	
JUSTIN VENSEL, PROJECT ENGINEER	DATE

**ABBREVIATIONS**

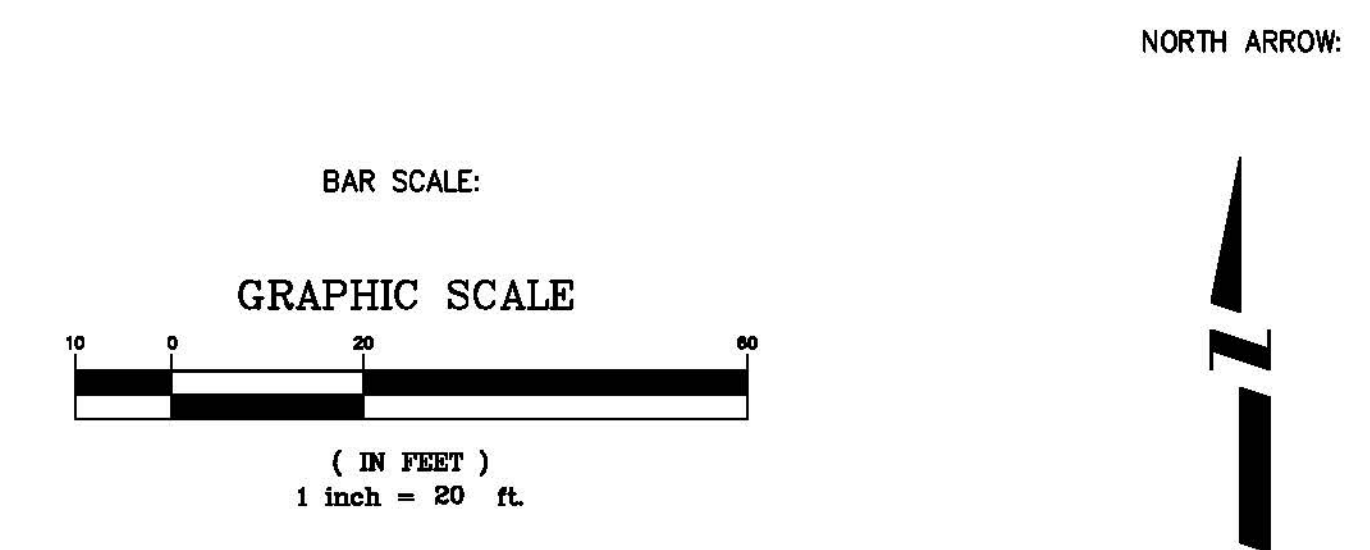
AASHTO	AMERICAN ASSOCIATION OF STATE HIGHWAY & TRANSPORTATION OFFICIALS
ABC	AGGREGATE BASE COURSE
AC	ASBESTOS CEMENT
AP	ANGLE POINT
ASB	ANCHORED STRAW BALES
ASP	ALUMINIZED STEEL PIPE
ASTM	AMERICAN SOCIETY FOR TESTING MATERIALS
AWWA	AMERICAN WATER WORKS ASSOCIATION
BC	BACK OF CURB
BF	BUTTERFLY VALVE
BOW	BACK OF WALK
BCR	BEGIN CURB RETURN
BOT	BOTTOM
BSWMP	BETTER STORM WATER MANAGEMENT PRACTICES
CH	CHORD
CAP	CORRUGATED ALUMINUM PIPE
CDOT	COLORADO DEPARTMENT OF TRANSPORTATION
CI	CAST IRON
C,G,& SW	CURB, GUTTER & SIDEWALK
CL	CENTER LINE
CL	CLEAR
CMP	CORRUGATED METAL PIPE
CO	CLEAN OUT
COMB	COMBINATION (AS IN STORM SEWER AND SANITARY SEWER)
CONC	CONCRETE
CSM	CITY SURVEY MONUMENT
CSP	CORRUGATED STEEL PIPE
CU	COPPER
DI	DUCTILE IRON
DWY	DRIVEWAY
E	ELECTRIC
ECR	END CURB RETURN
EG	EDGE OF GUTTER
EL	ELEVATION
EP	EDGE OF PAVEMENT
EX	EXISTING
FB	FULL BODY
FC	FACE OF CURB
FG	FINISHED GRADE
F	FLOW LINE
FL	FLANGE
FM	FORCE MAIN
FO	FIBER OPTICS
FS	FAR SIDE
FTG	FOOTING
G	GAS
GB	GRADE BREAK
GM	GAS METER
GV	GATE VALVE
HBP	HOT BITUMINOUS PAVEMENT
HDPE	HIGH DENSITY POLYETHYLENE
INV	INVERT
IRR	IRRIGATION
L	LENGTH OF ARC
LC	LONG CHORD
LF	LINEAR FEET
LL	LONG ARC
LS	SHORT ARC
LT	LEFT
MB	MAILBOX
MCSM	MESA COUNTY SURVEY MONUMENT
MH	MANHOLE
MJ	MECHANICAL JOINT
MW	MILL WRAP
N/A	NOT APPLICABLE
NIC	NOT IN CONTRACT
NOP	NO ONE PERSON
NRCP	NON-REINFORCED CONCRETE PIPE
NS	NEAR SIDE
NTS	NOT TO SCALE
OHP	OVERHEAD POWER
OHT	OVERHEAD TELEPHONE
PC	POINT OF CURVATURE
PCC	POINT OF COMPOUND CURVATURE
PE	POLYETHYLENE
PERF	PERFORATED
PI	POINT OF INTERSECTION
PIP	PLASTIC IRRIGATION PIPE
POC	POINT ON CURVE
POT	POINT ON TANGENT
PR	PROPOSED
PRC	POINT OF REVERSE CURVATURE
PT	POINT OF TANGENCY
PVC	POLYVINYL CHLORIDE
R	RADIUS
RCP	REINFORCED CONCRETE PIPE
REQ'D	REQUIRED
RG	RESTRAINED GLANDS
RL	LONG RADIUS
ROW	RIGHT OF WAY
RP	RADIUS POINT
RR	RAIL ROAD
RS	SHORT RADIUS
RT	RIGHT
S	SLOPE
SAN	SANITARY
SC	SHORT CHORD
SCD	STANDARD CONTRACT DOCUMENTS
SCH	SCHEDULE
SF	SILT FENCE
SL	SECTION LINE
SSRB	STANDARD SPECIFICATIONS FOR ROAD & BRIDGE CONSTRUCTION
SSUU	STANDARD SPECIFICATIONS FOR CONSTRUCTION OF UNDERGROUND UTILITIES
STA	STATION
STL	STEEL
STM	STORM
T	TELEPHONE
TAN	LENGTH OF TANGENT
TC	TOP OF CURB
TH	TEST HOLE
TV	TELEVISION
(TYP)	TYPICAL
UU	UNDERGROUND UTILITIES
VC	VERTICAL CURVE
VCP	VITRIFIED CLAY PIPE
VPC	VERTICAL POINT OF CURVATURE
VPCC	VERTICAL POINT OF COMPOUND CURVATURE
VPRC	VERTICAL POINT OF REVERSE CURVATURE
VPI	VERTICAL POINT OF INTERSECTION
VPT	VERTICAL POINT OF TANGENCY
W	WATER
Δ	DELTA ANGLE

**LEGEND**

BSWMP DRAINAGE BASIN BOUNDARY	
BSWMP ANCHORED STRAW BALES	
BSWMP SILT FENCE	
BUILDING	
CONCRETE CURB AND GUTTER	
CONCRETE CURB, GUTTER, & SIDEWALK	
CONCRETE DITCH	
CONCRETE SIDEWALK	
CULVERT	
EARTH DITCH	
EDGE OF GRAVEL	
EDGE OF PAVEMENT	
FENCE (BARBED WIRE)	
FENCE (CHAIN LINK)	
FENCE (IRON)	
FENCE (PLASTIC)	
FENCE (WOOD)	
FENCE (WOVEN WIRE)	
GUARD RAIL	
HATCHING: INDICATES ASPHALT REMOVAL	
HATCHING: INDICATES CONCRETE REMOVAL	
HATCHING: INDICATES STAGING AREA	
LINE (CENTER OF IMPROVEMENTS)	
LINE (CITY LIMITS)	
LINE (CONTROL)	
LINE (EASEMENT)	
LINE (MONUMENT/SECTION)	
LINE (PROPERTY)	
LINE (RIGHT OF WAY)	
MATCH LINE	
PIPE (IRRIGATION)	
PIPE (SIPHON)	
PROPOSED CONCRETE CURB AND GUTTER	
PROPOSED CONCRETE CURB, GUTTER, & SIDEWALK	
PROPOSED CONCRETE SIDEWALK	
PROPOSED "WET" UTILITIES (CONSTRUCTION NOTE WILL INDICATE TYPE, SIZE, AND MATERIAL OF NEW MAIN)	
RAIL ROAD	
RETAINING WALL	
STRIPING (CONTINUOUS WHITE)	
STRIPING (DASHED WHITE)	
STRIPING (CONTINUOUS YELLOW)	
STRIPING (DASHED YELLOW)	
TOP OF SLOPE	
CONTOUR LINES (SHOWN BETWEEN TOP & TOE)	
TOE OF SLOPE	
TRAFFIC DETECTOR LOOP	
UTILITY LINE (ABANDON) (THIS CASE A WATER LINE)	
UTILITY LINE (CABLE TV)	
UTILITY LINE (ELECTRIC)	
UTILITY LINE (FIBER OPTIC)	
UTILITY LINE (GAS)	
UTILITY LINE (HIGH VOLTAGE OVERHEAD POWER)	
UTILITY LINE (OVERHEAD POWER)	
UTILITY LINE (OVERHEAD TELEPHONE)	
UTILITY LINE (SANITARY SEWER)	
UTILITY LINE (SANITARY SEWER FORCE MAIN)	
UTILITY LINE (SANITARY SEWER SERVICE)	
UTILITY LINE (STORM SEWER)	
UTILITY LINE (STORM SEWER, PERFORATED)	
UTILITY LINE (STORM/SANITARY SEWER SEWER COMBINATION)	
UTILITY LINE (TELEPHONE)	
UTILITY LINE (WATER)	

**SYMBOLS**

BENCH MARK	
CATCH BASIN	
CLEAN OUT	
CURB STOP	
FIRE HYDRANT	
GUY WIRE ANCHOR	
HEADGATE	
IRRIGATION PUMP	
MAILBOX	
MANHOLE (ELECTRIC)	
MANHOLE (GAS)	
MANHOLE (SANITARY/STORM)	
MANHOLE (TELEPHONE)	
MANHOLE (TV)	
MANHOLE (WATER)	
METER (GAS)	
METER (WATER)	
PEDESTAL (TELEPHONE)	
PEDESTAL (TV)	
PROPERTY PIN	
PULL BOX	
REDUCER FITTING	
SIGN OR POST (SIGN TYPE NOTED)	
SPRINKLER HEAD	
STREET LIGHT	
SURVEY MONUMENT (CITY)	
SURVEY MONUMENT (TYPE NOTED)	
TEST HOLE	
TRAFFIC PAINT MARKING	
TRAFFIC SIGNAL POLE AND MAST ARM	
UTILITY POLE	
VALVE (GAS)	
VALVE (IRRIGATION)	
VALVE (WATER)	
VEGETATION (HEDGE OR BUSH)	
VEGETATION (TREE STUMP)	
VEGETATION (TREE) (CALIPER SIZE NOTED)	
WATER HYDRANT	
WEIR	
YARD LIGHT	



REVISION Δ	DESCRIPTION	DATE	DRAWN BY	JCS	DATE	4-02
REVISION Δ			DESIGNED BY		DATE	
REVISION Δ			CHECKED BY		DATE	
REVISION Δ			APPROVED BY		DATE	

SCALE	
PLAN	PROFILE
HORIZ. 1"=20'	HORIZ.
	VERT.



**PUBLIC WORKS AND UTILITIES ENGINEERING DIVISION**

**CITY OF GRAND JUNCTION STANDARD ABBREVIATIONS, LEGEND, AND SYMBOLS SHEET**

Bid Schedule: Easter Hill SID						
Item No.	CDOT, City Ref.	Description	Quantity	Units	Unit Price	Total Price
1	103.11	Rock Excavation	400.	CY	\$ _____	\$ _____
2	103.16	Import Pit Run Backfill Material, include excavation, haul, and disposal of unsuitable material	750.	Ton	\$ _____	\$ _____
3	108.2	8" Gravity Sewer Pipe (SDR-35) PVC w/ native backfill. Includes type A bedding, haunching, initial backfill, and Clay cut-off walls	120.	LF	\$ _____	\$ _____
4	108.2	6" Gravity Sewer Pipe (SDR-35) PVC w/ native backfill. Includes type A bedding, haunching, initial backfill, and Clay cut-off walls	925.	LF	\$ _____	\$ _____
5	108.2	4" Gravity Sewer Pipe (SDR-35) PVC w/ native backfill. Includes type A bedding, haunching and initial backfill	75.	LF	\$ _____	\$ _____
6	108.2	4" Gravity Sewer Pipe (SDR-35) PVC w/ native backfill. Includes type A bedding, haunching and initial backfill. Two pipes one trench.	700.	LF	\$ _____	\$ _____
7	108.2	6" X 4" Sewer Service Tap (Full Body Wye w/45 degree bend)	7.	EA	\$ _____	\$ _____
8	108.2	Sewer Service Cleanout ( Price to include tee, 4" SDR-35, Cap, C.I. Cover and other appertenances per Standard Detail SS-06 and SS-07)	14.	EA	\$ _____	\$ _____
9	108.2	Connect to existing 8" Sanitary Sewer Main (Solid Sleeve Connector)	1.	EA	\$ _____	\$ _____
10	108.5	Remove and Reset Manhole( Contractor shall remove the manhole located at station 00+27 and reset the manhole at station 1+38)(contractor will have to core for the invert in and construct an invert per City Standards)	1.	EA	\$ _____	\$ _____
11	108.5	Sanitary Sewer Basic Manhole (48" I.D.)(Per Standard Detail SS-03)	3.	EA	\$ _____	\$ _____
12	108.5	Sanitary Sewer Basic Drop Manhole (48" I.D.)	2.	EA	\$ _____	\$ _____
13	108.5	Drop Manhole Barrel Section (D>5) (48" I.D.)	15.	VF	\$ _____	\$ _____
14	201	Clearing and Grubbing	Lump	sum	---	\$ _____
15	208	Erosion Control (Complete In Place)	Lump	sum	---	\$ _____
16	209	Dust Abatement	33.	Day	\$ _____	\$ _____
17	210	Reset Fence (All Types)	383.	LF	\$ _____	\$ _____
18	210	Reset Landscape Appertenances(Per Each Property)	7.	EA	\$ _____	\$ _____
19	212	Drill Seeding with Pasture Seed Mix	350.	SY	\$ _____	\$ _____
20	304	Aggregate Base Course (Class 6) (6" Thick)	432.	SY	\$ _____	\$ _____
21	625	Construction Surveying	Lump	sum	---	\$ _____
22	626	Mobilization	Lump	sum	---	\$ _____
23	630	Traffic Control (Complete In Place)	Lump	sum	---	\$ _____
24	630	Traffic Control Plan	Lump	sum	---	\$ _____
25	GCC56	Weekly Newsletter	Lump	sum	---	\$ _____
MCR		Minor Contract Revisions	---	---	---	\$7,000
				<b>Bid Amount:</b>	\$	

REVISION $\Delta$ _____	DESCRIPTION _____	DATE _____	DRAWN BY <u>JAH</u>	DATE <u>2/2010</u>
REVISION $\Delta$ _____	DESIGNED BY <u>JV</u>	DATE <u>2/2010</u>	CHECKED BY _____	DATE _____
REVISION $\Delta$ _____	APPROVED BY _____	DATE _____		

SCALE  
N.T.S.

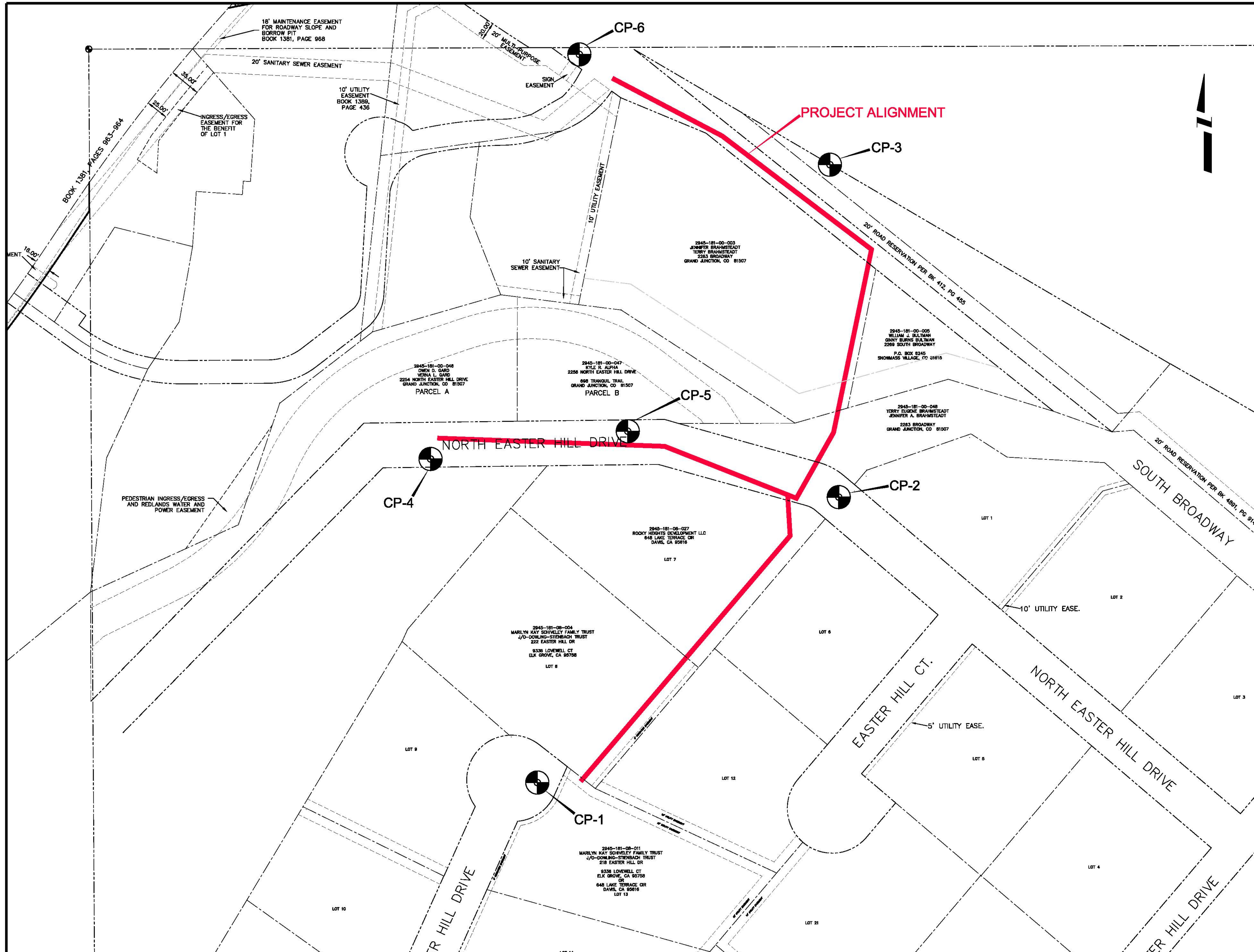


**PUBLIC WORKS AND UTILITIES ENGINEERING DIVISION**

**EASTER HILL SEWER IMPROVEMENT DISTRICT SUMMARY OF APPROXIMATE QUANTITIES**

K:\a\p\p\906-F003409\Drawings\906-F003409-SS-03.dwg, 3, 2/16/2010 8:28:23 AM

POINT #	NORTHING	EASTING	ELEV.	DESCRIPTION
CP-1	38659.737	71543.67	4758.343	CP PK 222
CP-2	38977.665	71879.45	4701.597	CP PK 2269
CP-3	39347.969	71869.587	4673.564	CP PK HWY340
CP-4	39020.176	71424.738	4710.839	CP PK 2264
CP-5	39051.057	71644.418	4704.92	CP
CP-6	39470.805	71590.496	4666.095	CP PK WELLS



REVISION	DESCRIPTION	DATE	DRAWN BY	DATE
REVISION A			JAH	2/2010
REVISION B			JV	2/2010
REVISION C				
REVISION D				

SCALE  
N.T.S.

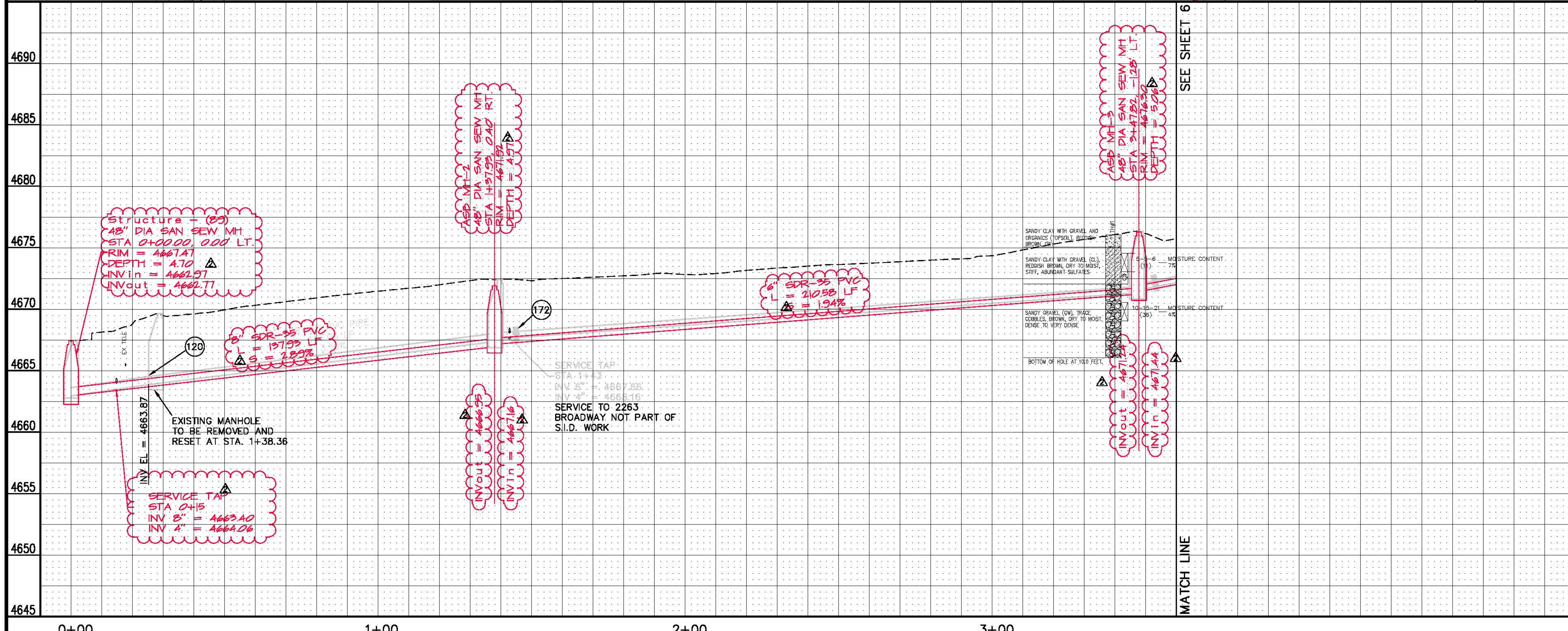
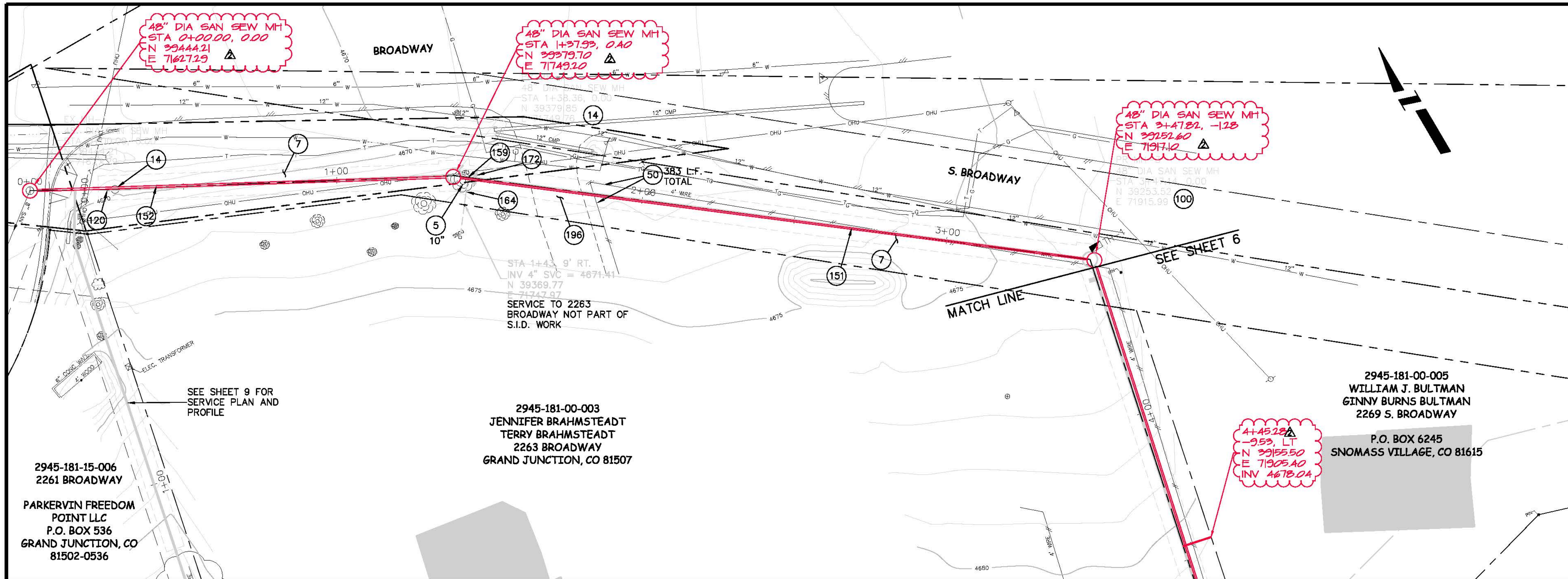


**PUBLIC WORKS AND UTILITIES ENGINEERING DIVISION**

**EASTER HILL SEWER IMPROVEMENT DISTRICT PROJECT CONTROL MAP**

CONSTRUCTION NOTES

- (5) 202.00 - REMOVE TREE.
- (7) 201.00 - CLEARING AND GRUBING.
- (14) REMOVE AND RESET MANHOLE (CONTRACTOR SHALL REMOVE MANHOLE AT STA. 0+27.81 AND RESET MANHOLE AT STA. 1+38.36)
- (50) 210.00 - RESET FENCE (ALL TYPES).
- (100) 102.11/108.5 - STANDARD 48" DIAMETER SANITARY SEWER MANHOLE; INCLUDES CONNECTION OF ADJACENT SEWER LINE, FORMING INVERTS AND ADJUSTING TO FINAL GRADE. (SEE CITY OF GRAND JUNCTION STANDARD DETAIL SS-02).
- (120) CONNECT 8" PVC PIPE TO EXISTING 8" PVC PIPE.
- (151) 102.90 - 6" GRAVITY SEWER PIPE (SDR-35 PVC). INCLUDES TYPE A BEDDING AND HAUNCHING MATERIAL AND BACKFILL OF TRENCH WITH NATIVE MATERIALS MEETING 103.16 EARTH BACKFILL MATERIAL.
- (152) 102.90 - 8" GRAVITY SEWER PIPE (SDR-35 PVC). INCLUDES TYPE A BEDDING AND HAUNCHING.
- (159) 102/103/104 - 4" SEWER SERVICE TAP, 6" X 4" FULL BODY WYE (SEE STD. DETAIL SS-06).
- (164) 102/103/104 - 4" SDR-35 PVC SANITARY SERVICE LINE WITH NATIVE BACKFILL MEETING 103.16 EARTH BACKFILL MATERIAL. INCLUDES SINGLE SERVICE LINE PER TRENCH, TYPE A BEDDING AND HAUNCHING, AND END-OF-SERVICE CAP.
- (172) 103.00 - CLAY CUT-OFF WALL (INCIDENTAL TO SEWER INSTALLATION PAY ITEM).
- (196) 304 - AGGREGATE BASE COURSE (CLASS 6) (6" THICK).



REVISION	DESCRIPTION	DATE	DRAWN BY	DATE	SCALE:
REVISION 1	ADDENDUM 1	3/1/2010	JAH	2/2010	PLAN HORIZONTAL 1"=20' VERTICAL 1"=5'
REVISION 2	AS BUILT	9-2010	JV	2/2010	
REVISION 3			CHECKED BY	DATE	
REVISION 4			APPROVED BY	DATE	

CITY OF  
**Grand Junction**  
COLORADO

**PUBLIC WORKS  
AND UTILITIES  
ENGINEERING DIVISION**

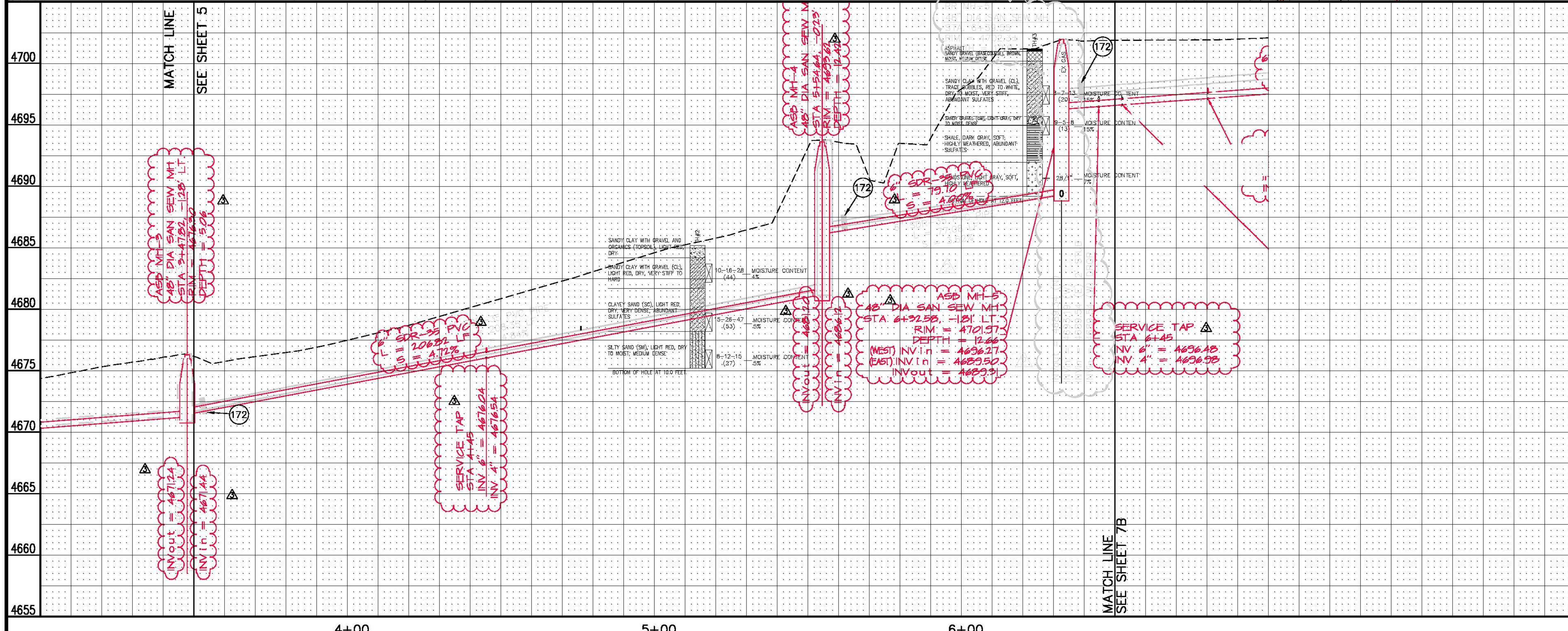
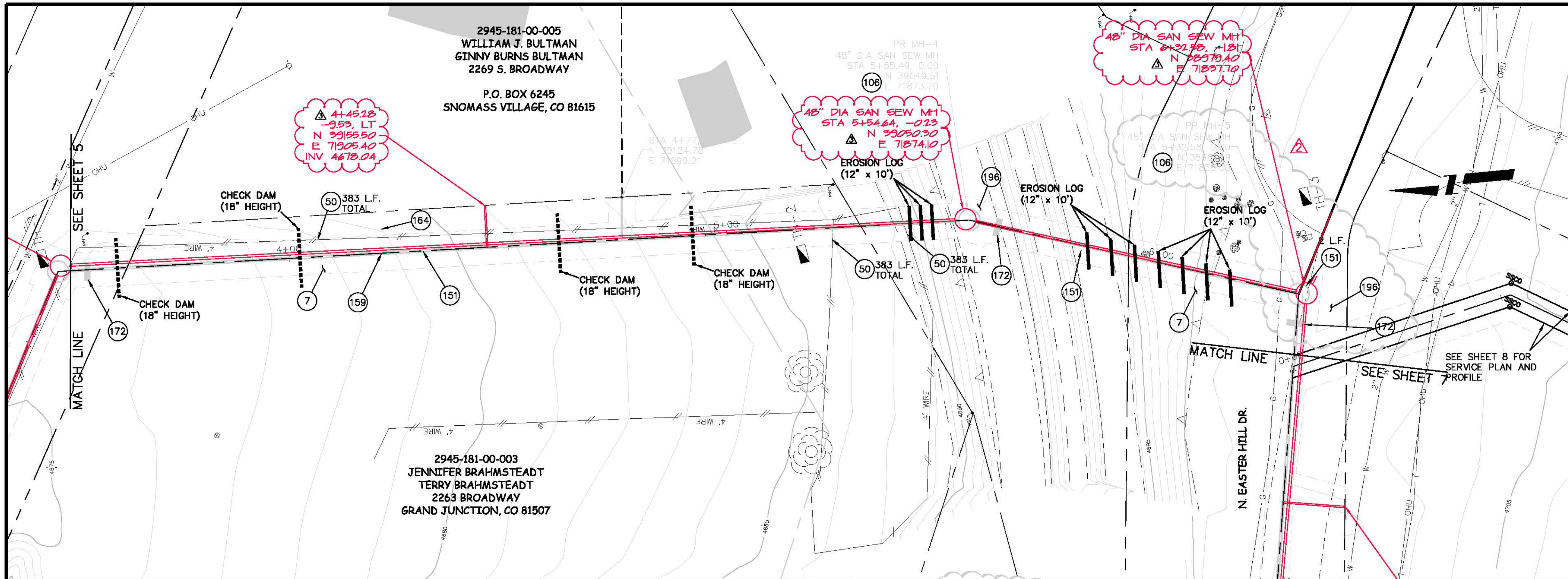
**EASTER HILL SEWER IMPROVEMENT DISTRICT  
SANITARY SEWER PLAN AND PROFILE  
STA 0+00 TO STA 3+50**

5

N:\LandProj\906-F003409 (Easter Hill STD)\dwg\2010-06-30 ADDENDUM 2 F003409 - BASE.dwg, 05 - PLAN AND PROFILE, 9/3/2010 7:52:19 AM

- 7 201.00 - CLEARING AND GRUBBING.
- 50 210.00 - RESET FENCE (ALL TYPES).
- 106 102.11 - SANITARY SEWER BASIC DROP MANHOLE (6" DIA. PIPE)(48" I.D.). INCLUDES MANHOLE COATING AS PER 102.11. (SEE STD. DETAIL SS-04).
- 151 102.90 - 6" GRAVITY SEWER PIPE (SDR-35 PVC). INCLUDES TYPE A BEDDING AND HAUNCHING MATERIAL AND BACKFILL OF TRENCH WITH NATIVE MATERIALS MEETING 103.16 EARTH BACKFILL MATERIAL.
- 159 102/103/104 - 4" SEWER SERVICE TAP, 6" X 4" FULL BODY WYE (SEE STD. DETAIL SS-06).
- 164 102/103/104 - 4" SDR-35 PVC SANITARY SERVICE LINE WITH NATIVE BACKFILL MEETING 103.16 EARTH BACKFILL MATERIAL. INCLUDES SINGLE SERVICE LINE PER TRENCH, TYPE A BEDDING AND HAUNCHING, AND END-OF-SERVICE CAP.
- 172 103.00 - CLAY CUT-OFF WALL (INCIDENTAL TO SEWER INSTALLATION PAY ITEM).
- 196 304 - AGGREGATE BASE COURSE (CLASS 6) (8" THICK)

NOTE: PROTECT ALL SURVEY PINS, REPLACE IF DAMAGED OR DISTURBED



REVISION	DESCRIPTION	DATE	DRAWN BY	DATE
1	MOVED MANHOLE	6/30/2010	JAH	2/2010
2	AS BUILT	9-2010	JV	2/2010
3				
4				

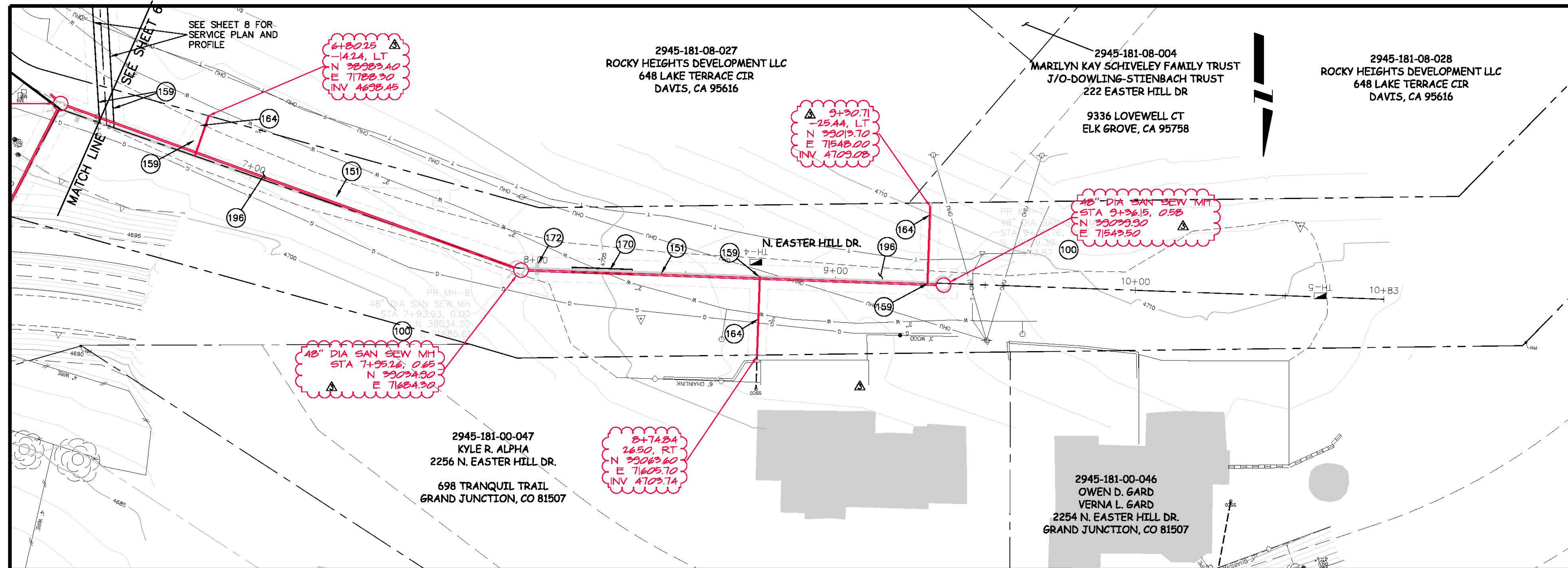
SCALES:  
PLAN HORIZONTAL 1" = 20'  
PROFILE VERTICAL 1" = 2.5'

CITY OF Grand Junction COLORADO

PUBLIC WORKS AND UTILITIES ENGINEERING DIVISION

EASTER HILL SEWER IMPROVEMENT DISTRICT  
SANITARY SEWER PLAN AND PROFILE  
STA 3+50 TO STA 6+50

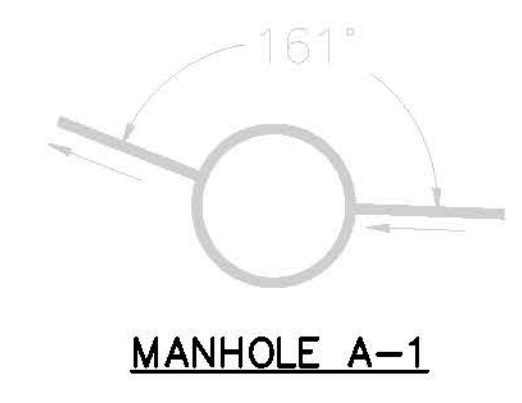
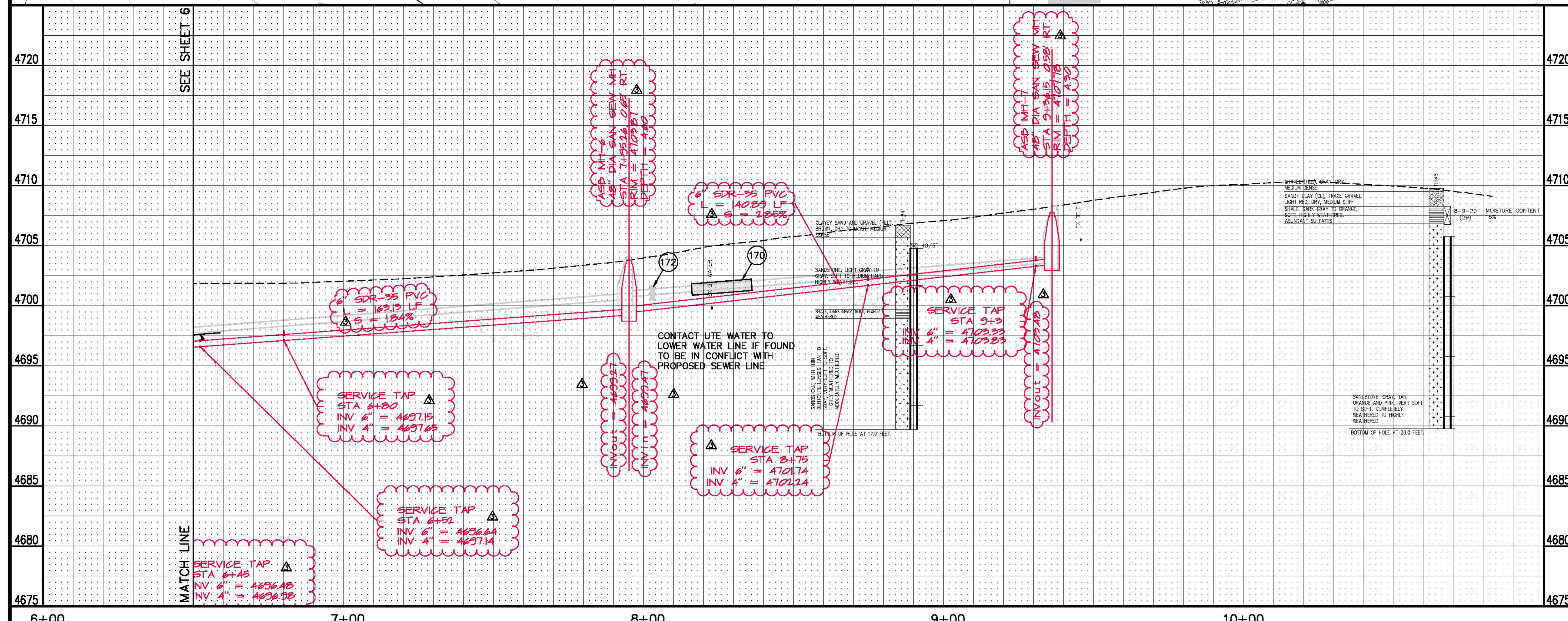
N:\LandProj\906-F003409 (Easter Hill STD)\dwg\2010-06-30 ADDENDUM 2 F003409 - BASE.dwg, 06 - PLAN AND PROFILE, 9/3/2010 7:51:53 AM



- 100 102.11/108.5 - STANDARD 48" DIAMETER SANITARY SEWER MANHOLE; INCLUDES CONNECTION OF ADJACENT SEWER LINE, FORMING INVERTS AND ADJUSTING TO FINAL GRADE. (SEE CITY OF GRAND JUNCTION STANDARD DETAIL SS-02).
- 151 102.90 - 6" GRAVITY SEWER PIPE (SDR-35 PVC). INCLUDES TYPE A BEDDING AND HAUNCHING MATERIAL AND BACKFILL OF TRENCH WITH NATIVE MATERIALS MEETING 103.16 EARTH BACKFILL MATERIAL.
- 159 102/103/104 - 4" SEWER SERVICE TAP, 6" X 4" FULL BODY WYE (SEE STD. DETAIL SS-06).
- 164 102/103/104 - 4" SDR-35 PVC SANITARY SERVICE LINE WITH NATIVE BACKFILL MEETING 103.16 EARTH BACKFILL MATERIAL. INCLUDES SINGLE SERVICE LINE PER TRENCH, TYPE A BEDDING AND HAUNCHING, AND END-OF-SERVICE CAP.
- 170 104.40 - ENCASE ENTIRE SEWER IN REINFORCED CONCRETE PER STD. DETAIL GU-04.
- 172 103.00 - CLAY CUT-OFF WALL (INCIDENTAL TO SEWER INSTALLATION PAY ITEM).
- 196 304 - AGGREGATE BASE COURSE (CLASS 6) (8" THICK)

NOTE: PROTECT ALL SURVEY PINS, REPLACE IF DAMAGED OR DISTURBED

AS BUILT  
9-2010



REVISION	DESCRIPTION	DATE	DRAWN BY	DATE	DESIGNED BY	DATE	CHECKED BY	DATE	APPROVED BY	DATE
REVISION $\Delta$	MOVED MANHOLE	6/30/2010	JAH	2/2010	JV	2/2010				
REVISION $\Delta$	AS BUILT	9-2010								

SCALES:  
 PLAN: 1" = 20'  
 PROFILE: HORIZONTAL 1" = 20', VERTICAL 1" = 2'

PUBLIC WORKS  
 AND UTILITIES  
 ENGINEERING DIVISION

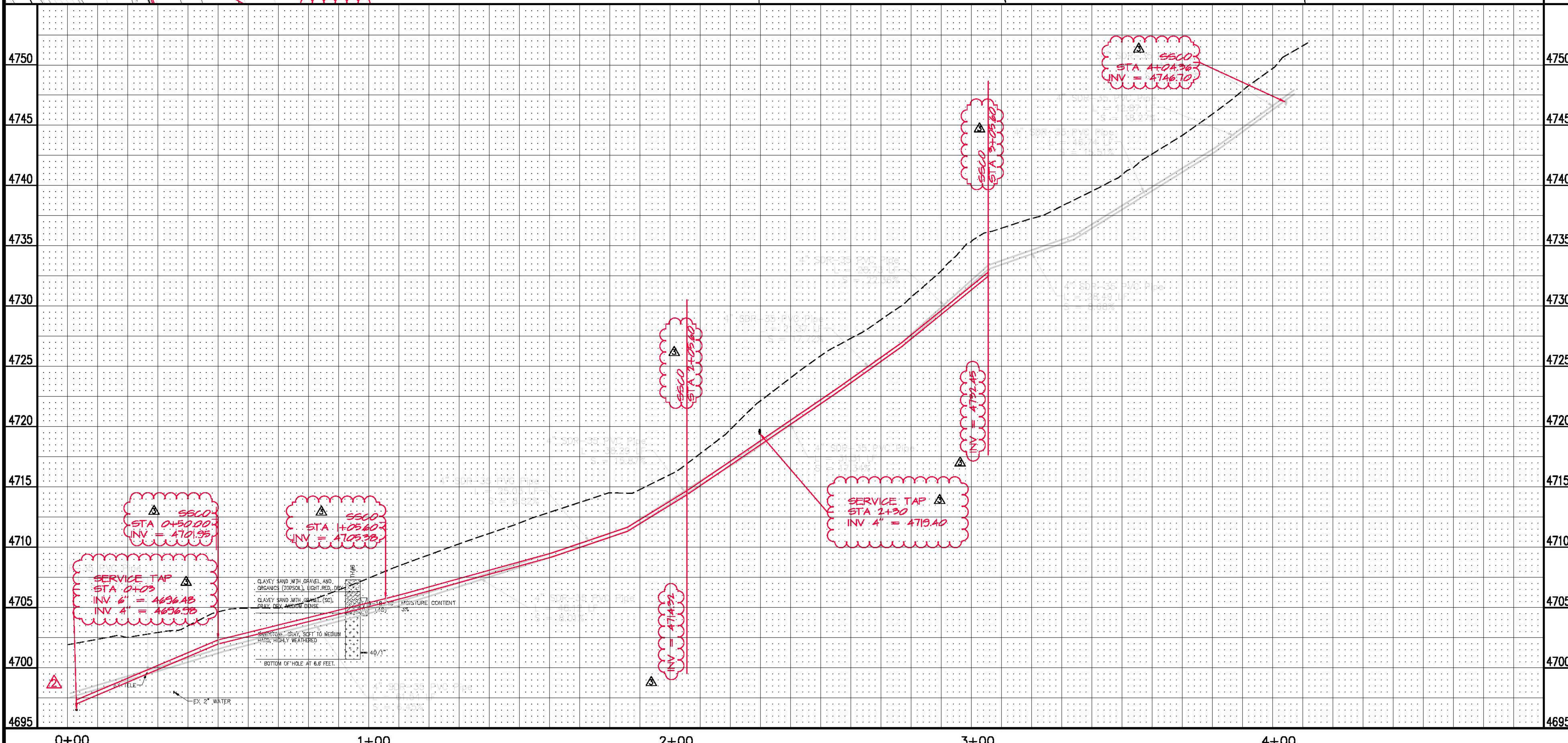
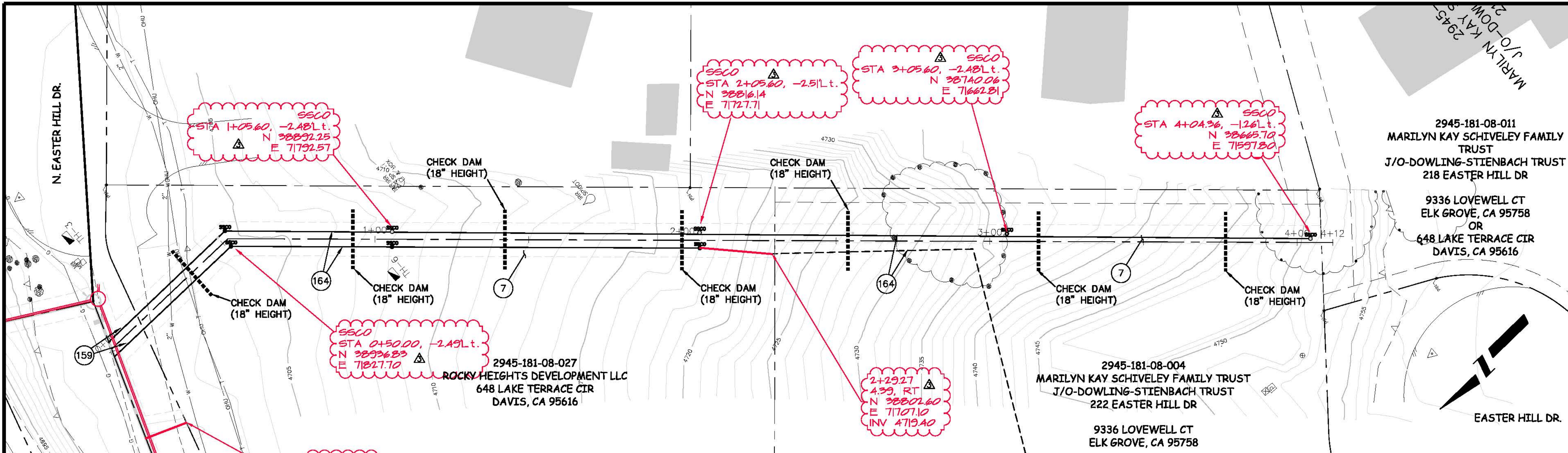
EASTER HILL SEWER IMPROVEMENT DISTRICT  
 SANITARY SEWER PLAN AND PROFILE  
 STA 6+50 TO STA 10+48

- 7 201.00 - CLEARING AND GRUBING.
- 159 102/103/104 - 4" SEWER SERVICE TAP, 6" X 4" FULL BODY WYE (SEE STD. DETAIL SS-06).
- 164 102/103/104 - 4" SDR-35 PVC SANITARY SERVICE LINE WITH NATIVE BACKFILL MEETING 103.16 EARTH BACKFILL MATERIAL. INCLUDES SINGLE SERVICE LINE PER TRENCH, TYPE A BEDDING AND HAUNCHING, AND END-OF-SERVICE CAP.

2945-181-08-011  
 MARILYN KAY SCHIVELEY FAMILY TRUST  
 J/O-DOWLING-STIENBACH TRUST  
 218 EASTER HILL DR  
 9336 LOVELL CT  
 ELK GROVE, CA 95758  
 OR  
 648 LAKE TERRACE CIR  
 DAVIS, CA 95616

2945-181-08-004  
 MARILYN KAY SCHIVELEY FAMILY TRUST  
 J/O-DOWLING-STIENBACH TRUST  
 222 EASTER HILL DR  
 9336 LOVELL CT  
 ELK GROVE, CA 95758

2945-181-08-027  
 ROCKY HEIGHTS DEVELOPMENT LLC  
 648 LAKE TERRACE CIR  
 DAVIS, CA 95616



AS BUILT  
 9/2010

REVISION	DESCRIPTION	DATE	DRAWN BY	DATE
1	MOVED MANHOLE	6/30/2010	JAH	2/2010
2	AS BUILT	9/2010	JV	2/2010
3				
4				

SCALES:
PLAN: 1" = 20'
PROFILE: HORIZONTAL 1" = 20', VERTICAL 1" = 5'



PUBLIC WORKS AND UTILITIES ENGINEERING DIVISION

EASTER HILL SEWER IMPROVEMENT DISTRICT  
 SANITARY SEWER PLAN AND PROFILE  
 SERVICES FOR 222 & 218 EASTER HILL DR

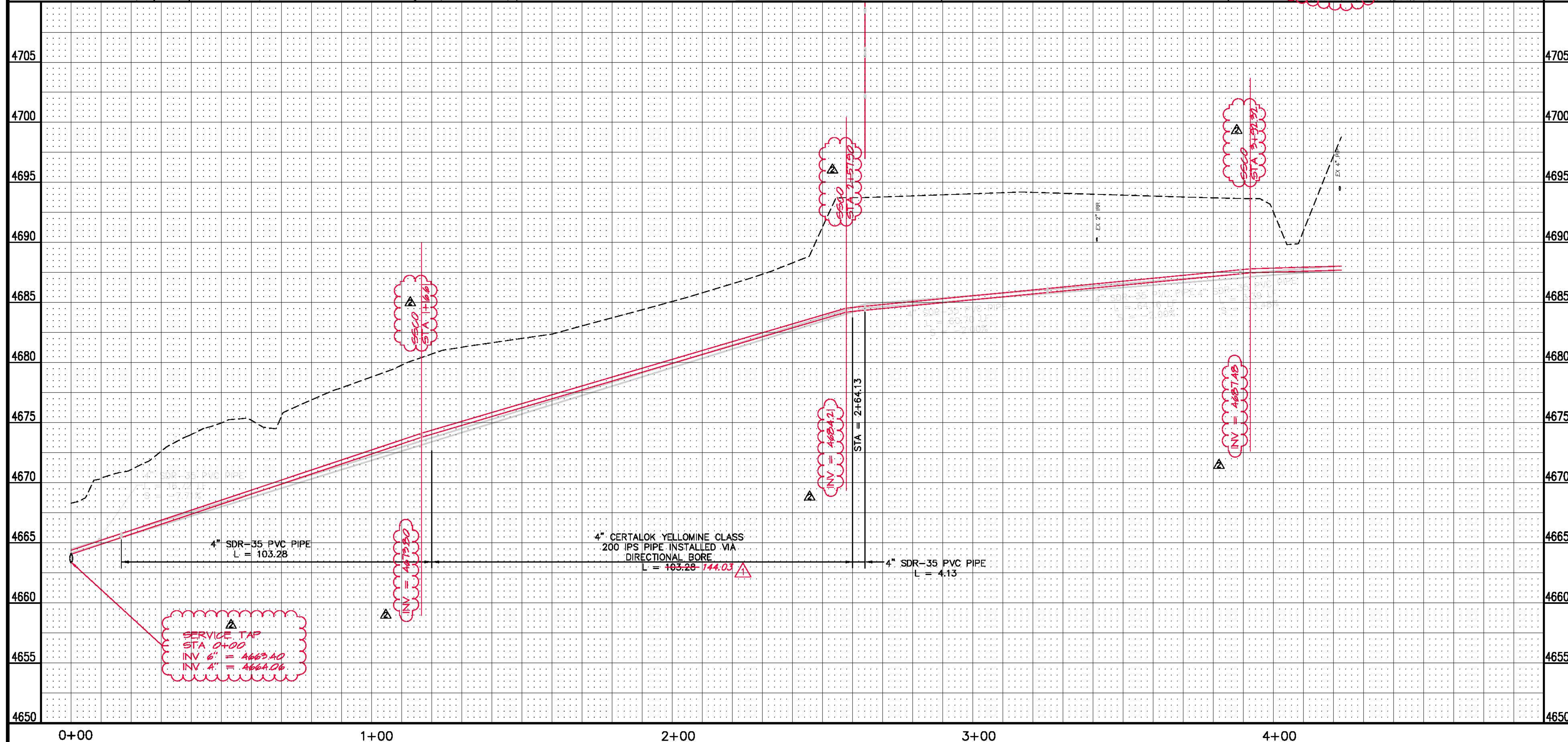
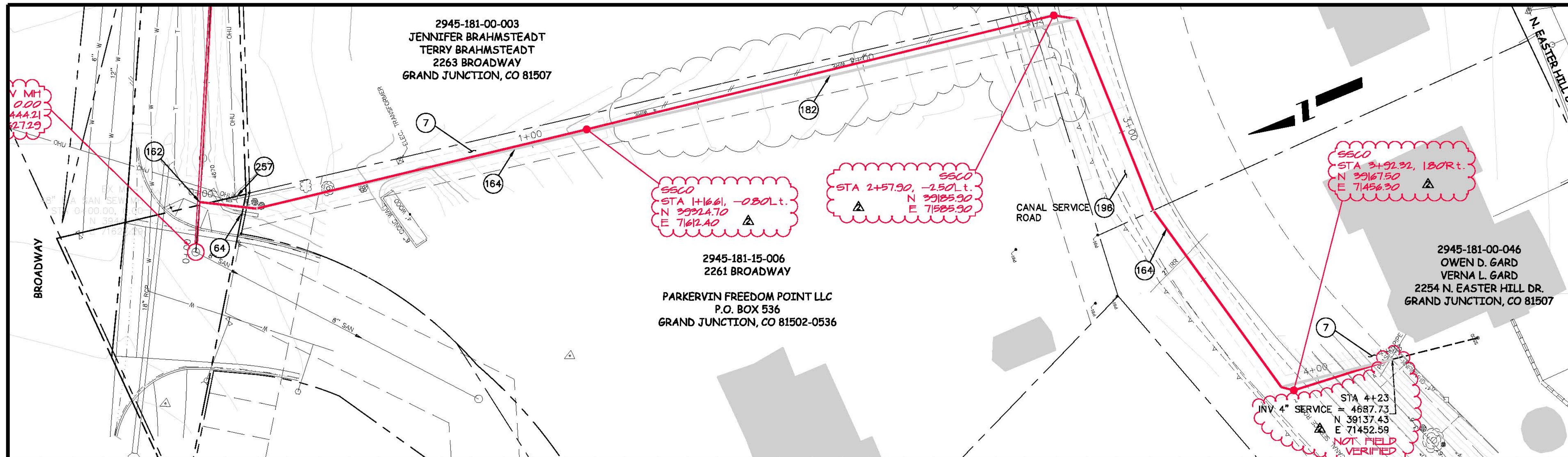
N:\LandProj\906-F003409 (Easter Hill STD)\dwg\2010-06-30 ADDENDUM 2 F003409 - BASE.dwg, 08 - PLAN AND PROFILE, 9/7/2010 7:59:25 AM



CONSTRUCTION NOTES

- 7 201.00 - CLEARING AND GRUBING.
- 64 210.00 - RESET ROCK WALL
- 162 102.9/104.2.B - INSTALL 8"x4" TAPPING SADDLE WITH STAINLESS STEEL STRAPS.
- 166 164 102/103/104 - 4" SDR-35 PVC SANITARY SERVICE LINE WITH NATIVE BACKFILL MEETING 103.16 EARTH BACKFILL MATERIAL. INCLUDES SINGLE SERVICE LINE PER TRENCH, TYPE A BEDDING AND HAUNCHING, AND END-OF-SERVICE CAP..
- 182 102.9B - INSTALL NEW 4" CERTALOK YELLOWMINE CLASS 200 IPS PIPE VIA DIRECTIONAL BORE. CONNECTION TO 4" SDR-35 PIPE SHALL BE MADE USING DWV/SDR COUPLERS.
- 196 304 - AGGREGATE BASE COURSE (CLASS 6) (6" THICK)
- 257 PROTECT/STABILIZE/SUPPORT UTILITY POLE IN PLACE

NOTE: PROTECT ALL SURVEY PINS, REPLACE IF DAMAGED OR DISTURBED



AS BUILT  
9/2010

REVISION	DESCRIPTION	DATE	DRAWN BY	DATE
1	ADDENDUM 1	8/17/2010	JAH	2/2010
2	AS BUILT	9/2010	JV	2/2010
3				
4				

SCALES:	PLAN	PROFILE
	HORIZONTAL 1" = 20'	HORIZONTAL 1" = 10'
	VERTICAL 1" = 2.5'	VERTICAL 1" = 5'



**PUBLIC WORKS AND UTILITIES ENGINEERING DIVISION**

**EASTER HILL SEWER IMPROVEMENT DISTRICT  
SANITARY SEWER PLAN AND PROFILE  
SERVICE FOR 2254 N. EASTER HILL DR**